



# Full wwPDB X-ray Structure Validation Report ⓘ

Feb 1, 2016 – 10:58 PM GMT

PDB ID : 5A1J  
Title : Periplasmic Binding Protein CeuE in complex with ferric 4-LICAM  
Authors : Raines, D.J.; Moroz, O.V.; Wilson, K.S.; Duhme-Klair, A.K.  
Deposited on : 2015-04-30  
Resolution : 1.60 Å(reported)

This is a Full wwPDB X-ray Structure Validation Report for a publicly released PDB entry.  
We welcome your comments at [validation@mail.wwpdb.org](mailto:validation@mail.wwpdb.org)  
A user guide is available at  
<http://wwpdb.org/validation/2016/XrayValidationReportHelp>  
with specific help available everywhere you see the ⓘ symbol.

---

The following versions of software and data (see [references ⓘ](#)) were used in the production of this report:

MolProbity : 4.02b-467  
Mogul : 1.7 (RC4), CSD as536be (2015)  
Xtriage (Phenix) : 1.9-1692  
EDS : rb-20026688  
Percentile statistics : 20151230.v01 (using entries in the PDB archive December 30th 2015)  
Refmac : 5.8.0135  
CCP4 : 6.5.0  
Ideal geometry (proteins) : Engh & Huber (2001)  
Ideal geometry (DNA, RNA) : Parkinson et al. (1996)  
Validation Pipeline (wwPDB-VP) : trunk26865

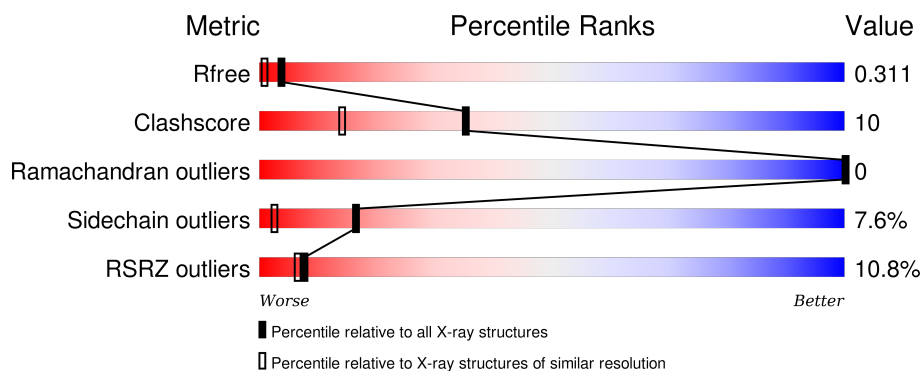
# 1 Overall quality at a glance

The following experimental techniques were used to determine the structure:

## *X-RAY DIFFRACTION*

The reported resolution of this entry is 1.60 Å.

Percentile scores (ranging between 0-100) for global validation metrics of the entry are shown in the following graphic. The table shows the number of entries on which the scores are based.



Metric	Whole archive (#Entries)	Similar resolution (#Entries, resolution range(Å))
$R_{free}$	91344	2475 (1.60-1.60)
Clashscore	102246	2732 (1.60-1.60)
Ramachandran outliers	100387	2654 (1.60-1.60)
Sidechain outliers	100360	2653 (1.60-1.60)
RSRZ outliers	91569	2479 (1.60-1.60)

The table below summarises the geometric issues observed across the polymeric chains and their fit to the electron density. The red, orange, yellow and green segments on the lower bar indicate the fraction of residues that contain outliers for  $\geq 3$ , 2, 1 and 0 types of geometric quality criteria. A grey segment represents the fraction of residues that are not modelled. The numeric value for each fraction is indicated below the corresponding segment, with a dot representing fractions  $\leq 5\%$ . The upper red bar (where present) indicates the fraction of residues that have poor fit to the electron density. The numeric value is given above the bar.

Mol	Chain	Length	Quality of chain
1	A	288	<div> <div>11%</div> <div>76%</div> <div>21%</div> <div>.</div> </div>

## 2 Entry composition [i](#)

There are 4 unique types of molecules in this entry. The entry contains 2369 atoms, of which 0 are hydrogens and 0 are deuteriums.

In the tables below, the ZeroOcc column contains the number of atoms modelled with zero occupancy, the AltConf column contains the number of residues with at least one atom in alternate conformation and the Trace column contains the number of residues modelled with at most 2 atoms.

- Molecule 1 is a protein called ENTEROCHELIN UPTAKE PERIPLASMIC BINDING PROTEIN.

Mol	Chain	Residues	Atoms					ZeroOcc	AltConf	Trace
1	A	288	Total	C	N	O	S	0	4	0
			2264	1458	372	431	3			

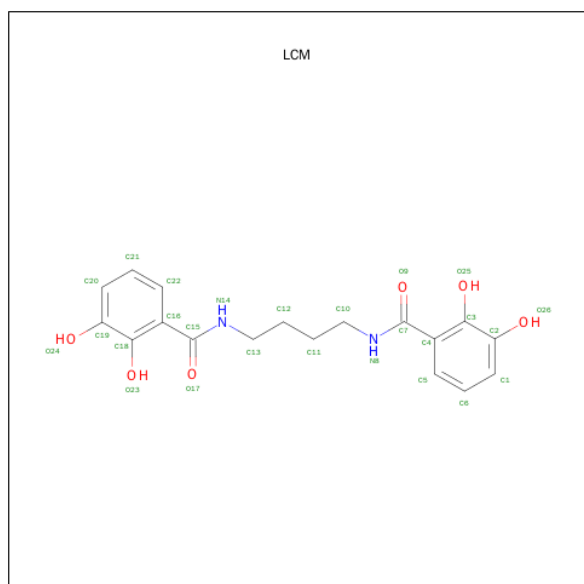
There is a discrepancy between the modelled and reference sequences:

Chain	Residue	Modelled	Actual	Comment	Reference
A	23	MET	-	EXPRESSION TAG	UNP Q0P8Q4

- Molecule 2 is FE (III) ION (three-letter code: FE) (formula: Fe).

Mol	Chain	Residues	Atoms		ZeroOcc	AltConf
2	A	1	Total	Fe	0	0
			1	1		

- Molecule 3 is N,N'-BUTANE-1,4-DIYLBIS(2,3-DIHYDROXYBENZAMIDE) (three-letter code: LCM) (formula: C<sub>18</sub>H<sub>20</sub>N<sub>2</sub>O<sub>6</sub>).



Mol	Chain	Residues	Atoms				ZeroOcc	AltConf
3	A	1	Total	C	N	O	0	0
			26	18	2	6		

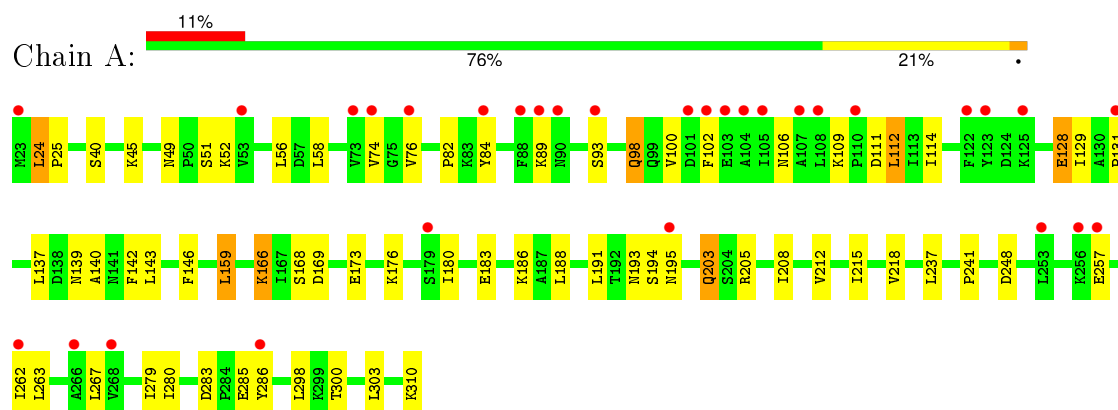
- Molecule 4 is water.

Mol	Chain	Residues	Atoms		ZeroOcc	AltConf
4	A	78	Total	O	0	0
			78	78		

### 3 Residue-property plots

These plots are drawn for all protein, RNA and DNA chains in the entry. The first graphic for a chain summarises the proportions of errors displayed in the second graphic. The second graphic shows the sequence view annotated by issues in geometry and electron density. Residues are color-coded according to the number of geometric quality criteria for which they contain at least one outlier: green = 0, yellow = 1, orange = 2 and red = 3 or more. A red dot above a residue indicates a poor fit to the electron density ( $\text{RSRZ} > 2$ ). Stretches of 2 or more consecutive residues without any outlier are shown as a green connector. Residues present in the sample, but not in the model, are shown in grey.

- Molecule 1: ENTEROCHELIN UPTAKE PERIPLASMIC BINDING PROTEIN



## 4 Data and refinement statistics

Property	Value	Source
Space group	P 21 21 21	Depositor
Cell constants a, b, c, $\alpha$ , $\beta$ , $\gamma$	60.42Å 66.89Å 67.30Å 90.00° 90.00° 90.00°	Depositor
Resolution (Å)	33.65 – 1.60 33.65 – 1.61	Depositor EDS
% Data completeness (in resolution range)	97.8 (33.65-1.60) 97.8 (33.65-1.61)	Depositor EDS
$R_{merge}$	0.05	Depositor
$R_{sym}$	(Not available)	Depositor
$\langle I/\sigma(I) \rangle$ <sup>1</sup>	1.85 (at 1.61Å)	Xtriage
Refinement program	REFMAC 5.8.0049	Depositor
R, $R_{free}$	0.264 , 0.312 0.267 , 0.311	Depositor DCC
$R_{free}$ test set	1793 reflections (5.27%)	DCC
Wilson B-factor (Å <sup>2</sup> )	20.7	Xtriage
Anisotropy	0.134	Xtriage
Bulk solvent $k_{sol}$ (e/Å <sup>3</sup> ), $B_{sol}$ (Å <sup>2</sup> )	0.32 , 18.6	EDS
Estimated twinning fraction	0.854 for H, K, L 0.146 for -H, L, K 0.088 for -h,l,k	Xtriage
Reported twinning fraction	0.854 for H, K, L 0.146 for -H, L, K	Depositor
L-test for twinning <sup>2</sup>	$\langle  L  \rangle = 0.39$ , $\langle L^2 \rangle = 0.21$	Xtriage
Outliers	0 of 35814 reflections	Xtriage
$F_o, F_c$ correlation	0.91	EDS
Total number of atoms	2369	wwPDB-VP
Average B, all atoms (Å <sup>2</sup> )	20.0	wwPDB-VP

Xtriage's analysis on translational NCS is as follows: *The largest off-origin peak in the Patterson function is 5.54% of the height of the origin peak. No significant pseudotranslation is detected.*

<sup>1</sup>Intensities estimated from amplitudes.

<sup>2</sup>Theoretical values of  $\langle |L| \rangle$ ,  $\langle L^2 \rangle$  for acentric reflections are 0.5, 0.375 respectively for untwinned datasets, and 0.333, 0.2 for perfectly twinned datasets.

## 5 Model quality ⓘ

### 5.1 Standard geometry ⓘ

Bond lengths and bond angles in the following residue types are not validated in this section: LCM, FE

The Z score for a bond length (or angle) is the number of standard deviations the observed value is removed from the expected value. A bond length (or angle) with  $|Z| > 5$  is considered an outlier worth inspection. RMSZ is the root-mean-square of all Z scores of the bond lengths (or angles).

Mol	Chain	Bond lengths		Bond angles	
		RMSZ	$\# Z  > 5$	RMSZ	$\# Z  > 5$
1	A	0.98	1/2309 (0.0%)	1.17	9/3114 (0.3%)

All (1) bond length outliers are listed below:

Mol	Chain	Res	Type	Atoms	Z	Observed(Å)	Ideal(Å)
1	A	205	ARG	C-O	5.36	1.33	1.23

All (9) bond angle outliers are listed below:

Mol	Chain	Res	Type	Atoms	Z	Observed(°)	Ideal(°)
1	A	205	ARG	NE-CZ-NH1	9.35	124.97	120.30
1	A	58	LEU	CB-CG-CD1	7.22	123.27	111.00
1	A	112	LEU	CB-CG-CD1	-6.65	99.70	111.00
1	A	188	LEU	CB-CG-CD1	6.27	121.65	111.00
1	A	159	LEU	CA-CB-CG	5.85	128.76	115.30
1	A	159	LEU	CB-CG-CD1	5.39	120.16	111.00
1	A	283	ASP	CB-CG-OD1	5.21	122.99	118.30
1	A	215	ILE	CG1-CB-CG2	-5.12	100.14	111.40
1	A	248	ASP	CB-CG-OD1	5.07	122.86	118.30

There are no chirality outliers.

There are no planarity outliers.

### 5.2 Too-close contacts ⓘ

In the following table, the Non-H and H(model) columns list the number of non-hydrogen atoms and hydrogen atoms in the chain respectively. The H(added) column lists the number of hydrogen atoms added and optimized by MolProbity. The Clashes column lists the number of clashes within the asymmetric unit, whereas Symm-Clashes lists symmetry related clashes.

Mol	Chain	Non-H	H(model)	H(added)	Clashes	Symm-Clashes
1	A	2264	0	2366	45	0
2	A	1	0	0	0	0
3	A	26	0	16	3	0
4	A	78	0	0	5	0
All	All	2369	0	2382	46	0

The all-atom clashscore is defined as the number of clashes found per 1000 atoms (including hydrogen atoms). The all-atom clashscore for this structure is 10.

All (46) close contacts within the same asymmetric unit are listed below, sorted by their clash magnitude.

Atom-1	Atom-2	Interatomic distance (Å)	Clash overlap (Å)
1:A:218[A]:VAL:HG11	1:A:241:PRO:HB3	1.63	0.79
1:A:128:GLU:HA	1:A:128:GLU:OE1	1.82	0.79
1:A:166:LYS:O	1:A:169:ASP:OD1	2.07	0.73
1:A:128:GLU:OE1	1:A:128:GLU:CA	2.39	0.70
1:A:195:ASN:O	1:A:262:ILE:HD12	1.91	0.70
1:A:310:LYS:C	4:A:2078:HOH:O	2.31	0.69
1:A:106:ASN:N	1:A:106:ASN:HD22	2.00	0.60
1:A:98:GLN:HE22	3:A:1312:LCM:C4	2.14	0.60
1:A:279:ILE:C	1:A:280:ILE:HD13	2.23	0.59
1:A:237:LEU:HD22	1:A:267:LEU:HD22	1.85	0.57
3:A:1312:LCM:N8	3:A:1312:LCM:O25	2.37	0.57
1:A:82:PRO:HB3	1:A:285:GLU:HB3	1.85	0.57
1:A:52:LYS:HA	1:A:74:VAL:HG13	1.86	0.57
1:A:109[B]:LYS:HE3	4:A:2021:HOH:O	2.05	0.56
1:A:195:ASN:O	1:A:262:ILE:CD1	2.53	0.56
1:A:186:LYS:HB2	1:A:218[A]:VAL:HG12	1.88	0.56
1:A:193:ASN:O	1:A:194:SER:HB3	2.09	0.53
1:A:140:ALA:HA	1:A:203:GLN:OE1	2.10	0.51
1:A:180:ILE:HG22	1:A:180:ILE:O	2.09	0.51
1:A:106:ASN:HD21	1:A:129:ILE:CD1	2.23	0.51
1:A:109[A]:LYS:HG2	4:A:2020:HOH:O	2.10	0.51
1:A:208:ILE:CG2	1:A:212:VAL:HB	2.41	0.50
1:A:218[A]:VAL:HG11	1:A:241:PRO:CB	2.38	0.50
1:A:98:GLN:HE22	3:A:1312:LCM:C5	2.25	0.50
1:A:303:LEU:HD23	1:A:303:LEU:N	2.26	0.50
1:A:169:ASP:O	1:A:173:GLU:HG2	2.14	0.48
1:A:208:ILE:HG23	1:A:212:VAL:HB	1.96	0.47
1:A:109[B]:LYS:CE	4:A:2021:HOH:O	2.62	0.47
1:A:208:ILE:HG13	4:A:2054:HOH:O	2.15	0.46
1:A:51:SER:N	1:A:111:ASP:OD2	2.45	0.46

*Continued on next page...*



Continued from previous page...

Atom-1	Atom-2	Interatomic distance (Å)	Clash overlap (Å)
1:A:106:ASN:HD21	1:A:129:ILE:HD13	1.81	0.46
1:A:24:LEU:HD12	1:A:25:PRO:HD2	1.98	0.45
1:A:56:LEU:CD2	1:A:100:VAL:HG22	2.47	0.45
1:A:106:ASN:ND2	1:A:129:ILE:HD13	2.32	0.44
1:A:102:PHE:O	1:A:106:ASN:ND2	2.50	0.44
1:A:98:GLN:HB2	1:A:98:GLN:HE21	1.38	0.44
1:A:137:LEU:HD13	1:A:142:PHE:CE2	2.54	0.43
1:A:112:LEU:HD21	1:A:114:ILE:HD11	2.01	0.43
1:A:76:VAL:O	1:A:93:SER:HA	2.19	0.43
1:A:208:ILE:HG23	1:A:212:VAL:CB	2.48	0.42
1:A:56:LEU:HD21	1:A:100:VAL:HG22	2.01	0.42
1:A:106:ASN:H	1:A:106:ASN:HD22	1.66	0.42
1:A:52:LYS:HB3	1:A:74:VAL:HG11	2.02	0.41
1:A:139:ASN:HB3	1:A:203:GLN:O	2.20	0.41
1:A:286:TYR:CZ	1:A:300:THR:HG21	2.56	0.40
1:A:146:PHE:CE2	1:A:298:LEU:HD22	2.56	0.40

There are no symmetry-related clashes.

## 5.3 Torsion angles [i](#)

### 5.3.1 Protein backbone [i](#)

In the following table, the Percentiles column shows the percent Ramachandran outliers of the chain as a percentile score with respect to all X-ray entries followed by that with respect to entries of similar resolution.

The Analysed column shows the number of residues for which the backbone conformation was analysed, and the total number of residues.

Mol	Chain	Analysed	Favoured	Allowed	Outliers	Percentiles	
1	A	290/288 (101%)	275 (95%)	15 (5%)	0	100	100

There are no Ramachandran outliers to report.

### 5.3.2 Protein sidechains [i](#)

In the following table, the Percentiles column shows the percent sidechain outliers of the chain as a percentile score with respect to all X-ray entries followed by that with respect to entries of similar resolution.

The Analysed column shows the number of residues for which the sidechain conformation was analysed, and the total number of residues.

Mol	Chain	Analysed	Rotameric	Outliers	Percentiles
1	A	255/251 (102%)	236 (92%)	19 (8%)	17 3

All (19) residues with a non-rotameric sidechain are listed below:

Mol	Chain	Res	Type
1	A	24	LEU
1	A	40	SER
1	A	45	LYS
1	A	49	ASN
1	A	84	TYR
1	A	89	LYS
1	A	98	GLN
1	A	128	GLU
1	A	131	PRO
1	A	143	LEU
1	A	159	LEU
1	A	166	LYS
1	A	168	SER
1	A	176	LYS
1	A	183	GLU
1	A	191	LEU
1	A	203	GLN
1	A	257	GLU
1	A	263	LEU

Some sidechains can be flipped to improve hydrogen bonding and reduce clashes. All (4) such sidechains are listed below:

Mol	Chain	Res	Type
1	A	49	ASN
1	A	90	ASN
1	A	98	GLN
1	A	106	ASN

### 5.3.3 RNA ⓘ

There are no RNA molecules in this entry.

## 5.4 Non-standard residues in protein, DNA, RNA chains [i](#)

There are no non-standard protein/DNA/RNA residues in this entry.

## 5.5 Carbohydrates [i](#)

There are no carbohydrates in this entry.

## 5.6 Ligand geometry [i](#)

Of 2 ligands modelled in this entry, 1 is monoatomic - leaving 1 for Mogul analysis.

In the following table, the Counts columns list the number of bonds (or angles) for which Mogul statistics could be retrieved, the number of bonds (or angles) that are observed in the model and the number of bonds (or angles) that are defined in the chemical component dictionary. The Link column lists molecule types, if any, to which the group is linked. The Z score for a bond length (or angle) is the number of standard deviations the observed value is removed from the expected value. A bond length (or angle) with  $|Z| > 2$  is considered an outlier worth inspection. RMSZ is the root-mean-square of all Z scores of the bond lengths (or angles).

Mol	Type	Chain	Res	Link	Bond lengths			Bond angles		
					Counts	RMSZ	$\# Z  > 2$	Counts	RMSZ	$\# Z  > 2$
3	LCM	A	1312	2	27,27,27	1.99	5 (18%)	36,36,36	1.70	8 (22%)

In the following table, the Chirals column lists the number of chiral outliers, the number of chiral centers analysed, the number of these observed in the model and the number defined in the chemical component dictionary. Similar counts are reported in the Torsion and Rings columns. '-' means no outliers of that kind were identified.

Mol	Type	Chain	Res	Link	Chirals	Torsions	Rings
3	LCM	A	1312	2	-	0/17/17/17	0/2/2/2

All (5) bond length outliers are listed below:

Mol	Chain	Res	Type	Atoms	Z	Observed(Å)	Ideal(Å)
3	A	1312	LCM	O26-C2	-2.39	1.31	1.36
3	A	1312	LCM	C2-C3	2.87	1.43	1.39
3	A	1312	LCM	C4-C3	3.83	1.47	1.41
3	A	1312	LCM	C19-C18	5.26	1.46	1.39
3	A	1312	LCM	C16-C18	5.51	1.50	1.41

All (8) bond angle outliers are listed below:

Mol	Chain	Res	Type	Atoms	Z	Observed(°)	Ideal(°)
3	A	1312	LCM	C11-C10-N8	-3.18	102.89	112.19
3	A	1312	LCM	O24-C19-C18	-2.82	110.56	117.91
3	A	1312	LCM	C16-C18-C19	-2.51	118.50	120.14
3	A	1312	LCM	C4-C7-N8	-2.27	112.89	117.52
3	A	1312	LCM	C5-C4-C7	2.33	124.53	118.33
3	A	1312	LCM	C5-C6-C1	2.58	123.93	120.24
3	A	1312	LCM	C16-C15-N14	3.27	124.20	117.52
3	A	1312	LCM	O24-C19-C20	4.13	130.69	119.35

There are no chirality outliers.

There are no torsion outliers.

There are no ring outliers.

1 monomer is involved in 3 short contacts:

Mol	Chain	Res	Type	Clashes	Symm-Clashes
3	A	1312	LCM	3	0

## 5.7 Other polymers [i](#)

There are no such residues in this entry.

## 5.8 Polymer linkage issues [i](#)

There are no chain breaks in this entry.

## 6 Fit of model and data ⓘ

### 6.1 Protein, DNA and RNA chains ⓘ

In the following table, the column labelled ‘#RSRZ> 2’ contains the number (and percentage) of RSRZ outliers, followed by percent RSRZ outliers for the chain as percentile scores relative to all X-ray entries and entries of similar resolution. The OWAB column contains the minimum, median, 95<sup>th</sup> percentile and maximum values of the occupancy-weighted average B-factor per residue. The column labelled ‘Q< 0.9’ lists the number of (and percentage) of residues with an average occupancy less than 0.9.

Mol	Chain	Analysed	<RSRZ>	#RSRZ>2	OWAB(Å <sup>2</sup> )	Q<0.9
1	A	288/288 (100%)	0.81	31 (10%) 8 6	10, 20, 30, 34	11 (3%)

All (31) RSRZ outliers are listed below:

Mol	Chain	Res	Type	RSRZ
1	A	76	VAL	4.4
1	A	84	TYR	3.9
1	A	104	ALA	3.5
1	A	74	VAL	3.4
1	A	53	VAL	3.3
1	A	108	LEU	3.1
1	A	257	GLU	3.1
1	A	256	LYS	3.0
1	A	102	PHE	3.0
1	A	131	PRO	2.9
1	A	23	MET	2.7
1	A	105	ILE	2.7
1	A	262	ILE	2.7
1	A	93	SER	2.6
1	A	253	LEU	2.5
1	A	73	VAL	2.5
1	A	195	ASN	2.4
1	A	123	TYR	2.3
1	A	266	ALA	2.3
1	A	125	LYS	2.3
1	A	179	SER	2.3
1	A	107	ALA	2.2
1	A	110	PRO	2.2
1	A	101	ASP	2.2
1	A	268	VAL	2.1
1	A	88	PHE	2.1
1	A	122	PHE	2.1

*Continued on next page...*

*Continued from previous page...*

Mol	Chain	Res	Type	RSRZ
1	A	286	TYR	2.1
1	A	90	ASN	2.1
1	A	103	GLU	2.1
1	A	89	LYS	2.1

## 6.2 Non-standard residues in protein, DNA, RNA chains [i](#)

There are no non-standard protein/DNA/RNA residues in this entry.

## 6.3 Carbohydrates [i](#)

There are no carbohydrates in this entry.

## 6.4 Ligands [i](#)

In the following table, the Atoms column lists the number of modelled atoms in the group and the number defined in the chemical component dictionary. LLDF column lists the quality of electron density of the group with respect to its neighbouring residues in protein, DNA or RNA chains. The B-factors column lists the minimum, median, 95<sup>th</sup> percentile and maximum values of B factors of atoms in the group. The column labelled 'Q< 0.9' lists the number of atoms with occupancy less than 0.9.

Mol	Type	Chain	Res	Atoms	RSCC	RSR	LLDF	B-factors( $\text{\AA}^2$ )	Q<0.9
3	LCM	A	1312	26/26	0.91	0.11	-0.34	12,18,24,27	0
2	FE	A	1311	1/1	0.99	0.07	-1.31	17,17,17,17	0

## 6.5 Other polymers [i](#)

There are no such residues in this entry.