



wwPDB X-ray Structure Validation Summary Report ⓘ

Feb 1, 2016 – 12:22 AM GMT

PDB ID : 2A4M
Title : Structure of Trprs II bound to ATP
Authors : Buddha, M.R.; Crane, B.R.
Deposited on : 2005-06-29
Resolution : 2.30 Å(reported)

This is a wwPDB X-ray Structure Validation Summary Report for a publicly released PDB entry.
We welcome your comments at validation@mail.wwpdb.org
A user guide is available at
<http://wwpdb.org/validation/2016/XrayValidationReportHelp>
with specific help available everywhere you see the ⓘ symbol.

The following versions of software and data (see [references ⓘ](#)) were used in the production of this report:

MolProbity : 4.02b-467
Mogul : 1.7 (RC4), CSD as536be (2015)
Xtriage (Phenix) : **NOT EXECUTED**
EDS : **NOT EXECUTED**
Percentile statistics : 20151230.v01 (using entries in the PDB archive December 30th 2015)
Ideal geometry (proteins) : Engh & Huber (2001)
Ideal geometry (DNA, RNA) : Parkinson et al. (1996)
Validation Pipeline (wwPDB-VP) : trunk26865

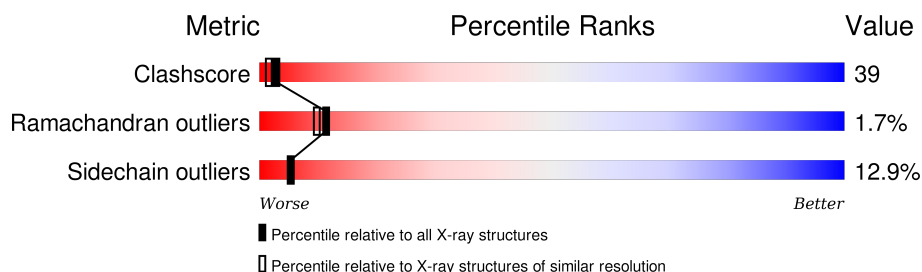
1 Overall quality at a glance

The following experimental techniques were used to determine the structure:

X-RAY DIFFRACTION

The reported resolution of this entry is 2.30 Å.

Percentile scores (ranging between 0-100) for global validation metrics of the entry are shown in the following graphic. The table shows the number of entries on which the scores are based.



Metric	Whole archive (#Entries)	Similar resolution (#Entries, resolution range(Å))
Clashscore	102246	4452 (2.30-2.30)
Ramachandran outliers	100387	4410 (2.30-2.30)
Sidechain outliers	100360	4409 (2.30-2.30)

The table below summarises the geometric issues observed across the polymeric chains and their fit to the electron density. The red, orange, yellow and green segments on the lower bar indicate the fraction of residues that contain outliers for ≥ 3 , 2, 1 and 0 types of geometric quality criteria. A grey segment represents the fraction of residues that are not modelled. The numeric value for each fraction is indicated below the corresponding segment, with a dot representing fractions $\leq 5\%$. The upper red bar (where present) indicates the fraction of residues that have poor fit to the electron density. The numeric value is given above the bar.

Note EDS was not executed.

Mol	Chain	Length	Quality of chain
1	A	331	<div> <div>52%</div> <div>41%</div> <div>7%</div> </div>
1	B	331	<div> <div>41%</div> <div>51%</div> <div>8%</div> </div>
1	C	331	<div> <div>52%</div> <div>37%</div> <div>10%</div> </div>

The following table lists non-polymeric compounds, carbohydrate monomers and non-standard residues in protein, DNA, RNA chains that are outliers for geometric or electron-density-fit criteria:

Mol	Type	Chain	Res	Chirality	Geometry	Clashes	Electron density
2	TRP	C	500	-	-	X	-

2 Entry composition [i](#)

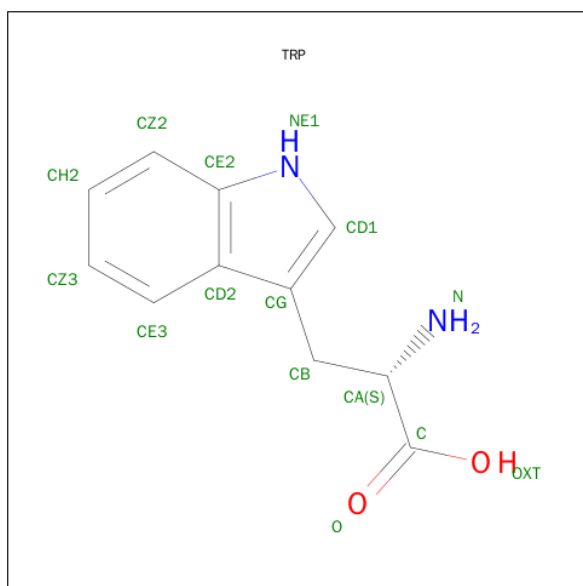
There are 3 unique types of molecules in this entry. The entry contains 8788 atoms, of which 0 are hydrogens and 0 are deuteriums.

In the tables below, the ZeroOcc column contains the number of atoms modelled with zero occupancy, the AltConf column contains the number of residues with at least one atom in alternate conformation and the Trace column contains the number of residues modelled with at most 2 atoms.

- Molecule 1 is a protein called Tryptophanyl-tRNA synthetase II.

Mol	Chain	Residues	Atoms					ZeroOcc	AltConf	Trace
1	A	331	Total	C	N	O	S	2	0	0
			2544	1599	468	471	6			
1	B	331	Total	C	N	O	S	0	0	0
			2511	1581	457	467	6			
1	C	331	Total	C	N	O	S	0	0	0
			2527	1591	462	468	6			

- Molecule 2 is TRYPTOPHAN (three-letter code: TRP) (formula: $C_{11}H_{12}N_2O_2$).



Mol	Chain	Residues	Atoms				ZeroOcc	AltConf
2	C	1	Total	C	N	O	0	0
			15	11	2	2		

- Molecule 3 is water.

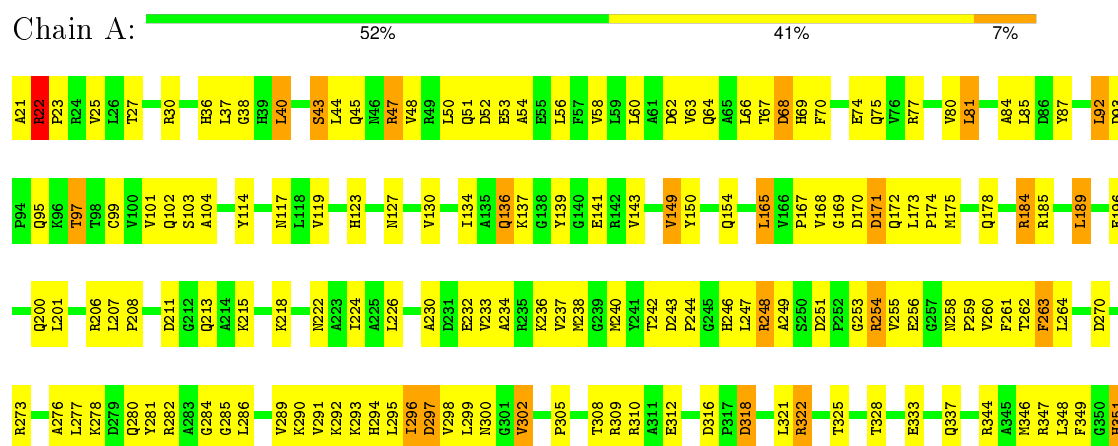
Mol	Chain	Residues	Atoms		ZeroOcc	AltConf
3	A	382	Total 382	O 382	0	0
3	B	395	Total 395	O 395	0	0
3	C	414	Total 414	O 414	0	0

3 Residue-property plots

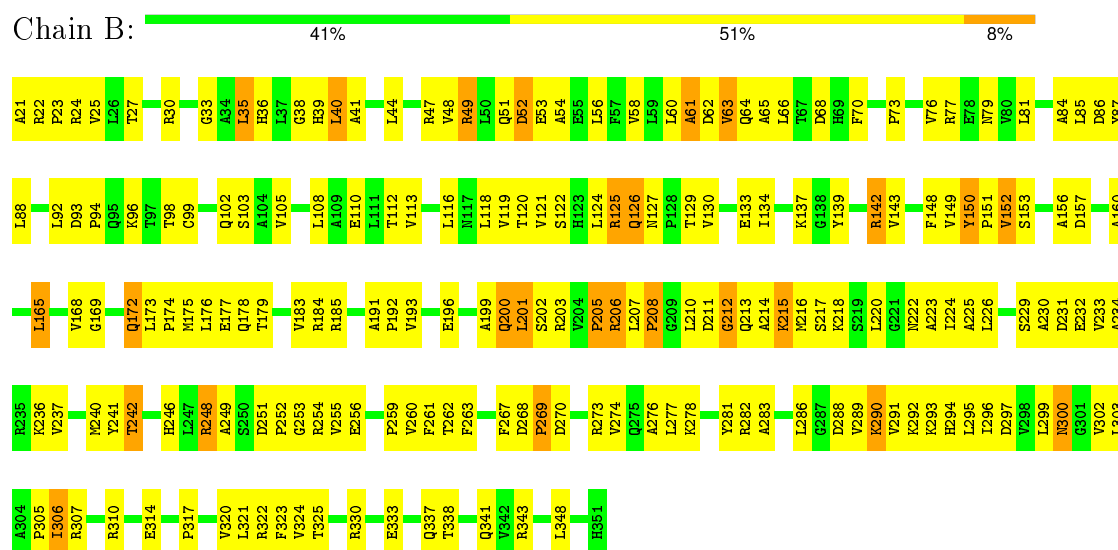
These plots are drawn for all protein, RNA and DNA chains in the entry. The first graphic for a chain summarises the proportions of errors displayed in the second graphic. The second graphic shows the sequence view annotated by issues in geometry and electron density. Residues are color-coded according to the number of geometric quality criteria for which they contain at least one outlier: green = 0, yellow = 1, orange = 2 and red = 3 or more. A red dot above a residue indicates a poor fit to the electron density ($\text{RSRZ} > 2$). Stretches of 2 or more consecutive residues without any outlier are shown as a green connector. Residues present in the sample, but not in the model, are shown in grey.

Note EDS was not executed.

• Molecule 1: Tryptophanyl-tRNA synthetase II



• Molecule 1: Tryptophanyl-tRNA synthetase II



• Molecule 1: Tryptophanyl-tRNA synthetase II



P271	L173	K96	A21
A272	P174	T97	R22
R273	M175	T98	P23
A276	L176	C99	R24
L277	E177	V100	V25
K278	Q178	F101	L26
E279	T179	Q102	L27
Q280	R180	S103	
		A104	R30
L286	R185	V105	P31
G287	L189	F106	T32
D288		E107	
V289	V193	A109	L35
K290		E110	R36
V291	E196	L111	L37
K292	P197	T112	
K293		V113	L40
H294	Q200		A41
L295	L201	L116	G42
	S202	N117	S43
V298	R203	T120	L44
L299	V204		Q45
N300	P205	H123	M46
			R47
L303	L210	N127	Q51
A304	M216	P128	E55
R307		T129	L56
T308	A223	V130	P57
R309	L224	K131	V58
R310		A132	L59
A311	S229	E133	L60
	A230	Q136	V63
E314	D231	K137	Q64
R315	E232		A65
	V233	P144	D68
L321	A234	A145	H69
	R235	G146	F70
T325	M238	V149	D71
E326		Y150	
G327	D243	P151	E74
T328	P244	V152	Q75
A329		S153	V76
R330	L247	Q154	R77
G331	R248	A155	E78
R332		A156	
	R254	D157	N79
Q337	V255	I158	V80
T338	E256		L81
L339	G257	L165	A82
G340	M258	V166	V83
Q341	V259	P167	A84
V342		V168	L85
R343	V260		
	F267	G169	L92
R347	D268	D170	D93
	P269	D171	P94
H351	D270	Q172	Q95

4 Data and refinement statistics

Xtriage (Phenix) and EDS were not executed - this section will therefore be incomplete.

Property	Value	Source
Space group	C 1 2 1	Depositor
Cell constants a, b, c, α , β , γ	212.58Å 58.57Å 85.15Å 90.00° 96.64° 90.00°	Depositor
Resolution (Å)	30.00 – 2.30	Depositor
% Data completeness (in resolution range)	0.3 (30.00-2.30)	Depositor
R_{merge}	(Not available)	Depositor
R_{sym}	(Not available)	Depositor
Refinement program	CNS 1.1	Depositor
R, R_{free}	0.230 , 0.270	Depositor
Estimated twinning fraction	No twinning to report.	Xtriage
Total number of atoms	8788	wwPDB-VP
Average B, all atoms (Å ²)	47.0	wwPDB-VP

5 Model quality [i](#)

5.1 Standard geometry [i](#)

The Z score for a bond length (or angle) is the number of standard deviations the observed value is removed from the expected value. A bond length (or angle) with $|Z| > 5$ is considered an outlier worth inspection. RMSZ is the root-mean-square of all Z scores of the bond lengths (or angles).

Mol	Chain	Bond lengths		Bond angles	
		RMSZ	# Z >5	RMSZ	# Z >5
1	A	0.36	0/2591	0.64	0/3519
1	B	0.32	0/2558	0.61	0/3478
1	C	0.43	0/2574	0.71	2/3499 (0.1%)
All	All	0.37	0/7723	0.65	2/10496 (0.0%)

There are no bond length outliers.

All (2) bond angle outliers are listed below:

Mol	Chain	Res	Type	Atoms	Z	Observed(°)	Ideal(°)
1	C	200	GLN	N-CA-C	-5.79	95.36	111.00
1	C	44	LEU	CB-CA-C	5.71	121.05	110.20

There are no chirality outliers.

There are no planarity outliers.

5.2 Too-close contacts [i](#)

In the following table, the Non-H and H(model) columns list the number of non-hydrogen atoms and hydrogen atoms in the chain respectively. The H(added) column lists the number of hydrogen atoms added and optimized by MolProbity. The Clashes column lists the number of clashes within the asymmetric unit, whereas Symm-Clashes lists symmetry related clashes.

Mol	Chain	Non-H	H(model)	H(added)	Clashes	Symm-Clashes
1	A	2544	0	2568	183	0
1	B	2511	0	2507	236	0
1	C	2527	0	2539	190	0
2	C	15	0	9	6	0
3	A	382	0	0	12	0
3	B	395	0	0	6	0
3	C	414	0	0	11	0
All	All	8788	0	7623	599	0

The all-atom clashscore is defined as the number of clashes found per 1000 atoms (including hydrogen atoms). The all-atom clashscore for this structure is 39.

The worst 5 of 599 close contacts within the same asymmetric unit are listed below, sorted by their clash magnitude.

Atom-1	Atom-2	Interatomic distance (Å)	Clash overlap (Å)
1:B:193:VAL:HG21	1:B:341:GLN:HB3	1.20	1.14
1:C:120:THR:HG23	1:C:123:HIS:H	1.13	1.08
1:B:168:VAL:HG23	1:B:172:GLN:HB2	1.21	1.06
1:C:337:GLN:HE21	1:C:337:GLN:HA	1.16	1.05
1:C:180:ARG:HG3	1:C:180:ARG:HH11	1.11	1.05

There are no symmetry-related clashes.

5.3 Torsion angles [i](#)

5.3.1 Protein backbone [i](#)

In the following table, the Percentiles column shows the percent Ramachandran outliers of the chain as a percentile score with respect to all X-ray entries followed by that with respect to entries of similar resolution.

The Analysed column shows the number of residues for which the backbone conformation was analysed, and the total number of residues.

Mol	Chain	Analysed	Favoured	Allowed	Outliers	Percentiles	
1	A	329/331 (99%)	305 (93%)	19 (6%)	5 (2%)	13	12
1	B	329/331 (99%)	299 (91%)	21 (6%)	9 (3%)	6	4
1	C	329/331 (99%)	309 (94%)	17 (5%)	3 (1%)	21	24
All	All	987/993 (99%)	913 (92%)	57 (6%)	17 (2%)	11	10

5 of 17 Ramachandran outliers are listed below:

Mol	Chain	Res	Type
1	B	61	ALA
1	C	202	SER
1	A	22	ARG
1	B	208	PRO
1	B	214	ALA

5.3.2 Protein sidechains ⓘ

In the following table, the Percentiles column shows the percent sidechain outliers of the chain as a percentile score with respect to all X-ray entries followed by that with respect to entries of similar resolution.

The Analysed column shows the number of residues for which the sidechain conformation was analysed, and the total number of residues.

Mol	Chain	Analysed	Rotameric	Outliers	Percentiles	
1	A	264/264 (100%)	228 (86%)	36 (14%)	5	4
1	B	256/264 (97%)	225 (88%)	31 (12%)	6	6
1	C	260/264 (98%)	226 (87%)	34 (13%)	5	5
All	All	780/792 (98%)	679 (87%)	101 (13%)	5	5

5 of 101 residues with a non-rotameric sidechain are listed below:

Mol	Chain	Res	Type
1	B	125	ARG
1	B	215	LYS
1	C	286	LEU
1	B	142	ARG
1	B	165	LEU

Some sidechains can be flipped to improve hydrogen bonding and reduce clashes. 5 of 35 such sidechains are listed below:

Mol	Chain	Res	Type
1	B	39	HIS
1	B	172	GLN
1	C	294	HIS
1	B	46	ASN
1	B	69	HIS

5.3.3 RNA ⓘ

There are no RNA molecules in this entry.

5.4 Non-standard residues in protein, DNA, RNA chains ⓘ

There are no non-standard protein/DNA/RNA residues in this entry.

5.5 Carbohydrates

There are no carbohydrates in this entry.

5.6 Ligand geometry

1 ligand is modelled in this entry.

In the following table, the Counts columns list the number of bonds (or angles) for which Mogul statistics could be retrieved, the number of bonds (or angles) that are observed in the model and the number of bonds (or angles) that are defined in the chemical component dictionary. The Link column lists molecule types, if any, to which the group is linked. The Z score for a bond length (or angle) is the number of standard deviations the observed value is removed from the expected value. A bond length (or angle) with $|Z| > 2$ is considered an outlier worth inspection. RMSZ is the root-mean-square of all Z scores of the bond lengths (or angles).

Mol	Type	Chain	Res	Link	Bond lengths			Bond angles		
					Counts	RMSZ	$\# Z > 2$	Counts	RMSZ	$\# Z > 2$
2	TRP	C	500	-	12,16,16	0.59	0	7,22,22	1.11	0

In the following table, the Chirals column lists the number of chiral outliers, the number of chiral centers analysed, the number of these observed in the model and the number defined in the chemical component dictionary. Similar counts are reported in the Torsion and Rings columns. '-' means no outliers of that kind were identified.

Mol	Type	Chain	Res	Link	Chirals	Torsions	Rings
2	TRP	C	500	-	-	0/3/8/8	0/2/2/2

There are no bond length outliers.

There are no bond angle outliers.

There are no chirality outliers.

There are no torsion outliers.

There are no ring outliers.

1 monomer is involved in 6 short contacts:

Mol	Chain	Res	Type	Clashes	Symm-Clashes
2	C	500	TRP	6	0

5.7 Other polymers

There are no such residues in this entry.

5.8 Polymer linkage issues ⓘ

There are no chain breaks in this entry.

6 Fit of model and data

6.1 Protein, DNA and RNA chains

EDS was not executed - this section will therefore be empty.

6.2 Non-standard residues in protein, DNA, RNA chains

EDS was not executed - this section will therefore be empty.

6.3 Carbohydrates

EDS was not executed - this section will therefore be empty.

6.4 Ligands

EDS was not executed - this section will therefore be empty.

6.5 Other polymers

EDS was not executed - this section will therefore be empty.