



# Full wwPDB X-ray Structure Validation Report ⓘ

Feb 19, 2016 – 09:44 PM GMT

PDB ID : 5A4I  
Title : Mechanism of Hydrogen activation by NiFe-hydrogenases  
Authors : Evans, R.M.; Brooke, E.J.; Wehlin, S.A.M.; Nomerotskaia, E.; Sargent, F.; Carr, S.C.; Phillips, S.E.V.; Armstrong, F.A.  
Deposited on : 2015-06-10  
Resolution : 1.23 Å(reported)

This is a Full wwPDB X-ray Structure Validation Report for a publicly released PDB entry.  
We welcome your comments at [validation@mail.wwpdb.org](mailto:validation@mail.wwpdb.org)  
A user guide is available at  
<http://wwpdb.org/validation/2016/XrayValidationReportHelp>  
with specific help available everywhere you see the ⓘ symbol.

---

The following versions of software and data (see [references ⓘ](#)) were used in the production of this report:

MolProbity : 4.02b-467  
Mogul : 1.7.1 (RC1), CSD as537be (2016)  
Xtriage (Phenix) : 1.9-1692  
EDS : rb-20026982  
Percentile statistics : 20151230.v01 (using entries in the PDB archive December 30th 2015)  
Refmac : 5.8.0135  
CCP4 : 6.5.0  
Ideal geometry (proteins) : Engh & Huber (2001)  
Ideal geometry (DNA, RNA) : Parkinson et al. (1996)  
Validation Pipeline (wwPDB-VP) : rb-20026982

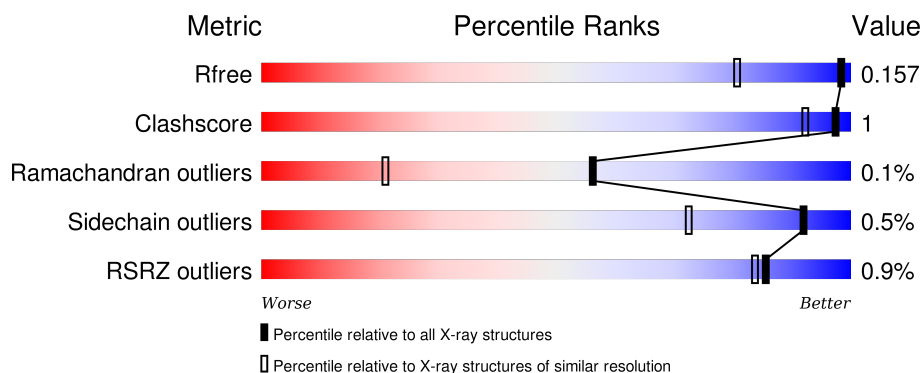
# 1 Overall quality at a glance

The following experimental techniques were used to determine the structure:

## *X-RAY DIFFRACTION*

The reported resolution of this entry is 1.23 Å.

Percentile scores (ranging between 0-100) for global validation metrics of the entry are shown in the following graphic. The table shows the number of entries on which the scores are based.



Metric	Whole archive (#Entries)	Similar resolution (#Entries, resolution range(Å))
$R_{free}$	91344	1229 (1.28-1.20)
Clashscore	102246	1327 (1.28-1.20)
Ramachandran outliers	100387	1274 (1.28-1.20)
Sidechain outliers	100360	1272 (1.28-1.20)
RSRZ outliers	91569	1233 (1.28-1.20)

The table below summarises the geometric issues observed across the polymeric chains and their fit to the electron density. The red, orange, yellow and green segments on the lower bar indicate the fraction of residues that contain outliers for  $\geq 3$ , 2, 1 and 0 types of geometric quality criteria. A grey segment represents the fraction of residues that are not modelled. The numeric value for each fraction is indicated below the corresponding segment, with a dot representing fractions  $\leq 5\%$ . The upper red bar (where present) indicates the fraction of residues that have poor fit to the electron density. The numeric value is given above the bar.

Mol	Chain	Length	Quality of chain
1	L	582	<div> <div style="width: 95%;"></div> <div style="width: 5%;"></div> </div> <div>95% 5%</div>
1	M	582	<div> <div style="width: 95%;"></div> <div style="width: 5%;"></div> </div> <div>95% 5%</div>
2	S	335	<div> <div style="width: 74%;"></div> <div style="width: 21%;"></div> <div style="width: 5%;"></div> </div> <div>74% 21% 5%</div>
2	T	335	<div> <div style="width: 75%;"></div> <div style="width: 21%;"></div> <div style="width: 4%;"></div> </div> <div>75% 21% 4%</div>

The following table lists non-polymeric compounds, carbohydrate monomers and non-standard

residues in protein, DNA, RNA chains that are outliers for geometric or electron-density-fit criteria:

Mol	Type	Chain	Res	Chirality	Geometry	Clashes	Electron density
10	LMT	S	404	-	-	-	X
10	LMT	T	404	-	-	-	X
5	MG	M	603	-	-	-	X
6	SO4	S	407	-	-	-	X

## 2 Entry composition

There are 12 unique types of molecules in this entry. The entry contains 14619 atoms, of which 0 are hydrogens and 0 are deuteriums.

In the tables below, the ZeroOcc column contains the number of atoms modelled with zero occupancy, the AltConf column contains the number of residues with at least one atom in alternate conformation and the Trace column contains the number of residues modelled with at most 2 atoms.

- Molecule 1 is a protein called HYDROGENASE-1 LARGE CHAIN.

Mol	Chain	Residues	Atoms					ZeroOcc	AltConf	Trace
1	L	581	Total	C	N	O	S	0	29	0
			4717	2998	826	864	29			
1	M	581	Total	C	N	O	S	0	22	0
			4669	2972	811	858	28			

There are 2 discrepancies between the modelled and reference sequences:

Chain	Residue	Modelled	Actual	Comment	Reference
L	574	ASN	ASP	ENGINEERED MUTATION	UNP P0ACD8
M	574	ASN	ASP	ENGINEERED MUTATION	UNP P0ACD8

- Molecule 2 is a protein called HYDROGENASE-1 SMALL CHAIN.

Mol	Chain	Residues	Atoms					ZeroOcc	AltConf	Trace
2	S	264	Total	C	N	O	S	0	9	0
			2092	1328	359	384	21			
2	T	264	Total	C	N	O	S	0	10	0
			2100	1334	362	383	21			

There are 16 discrepancies between the modelled and reference sequences:

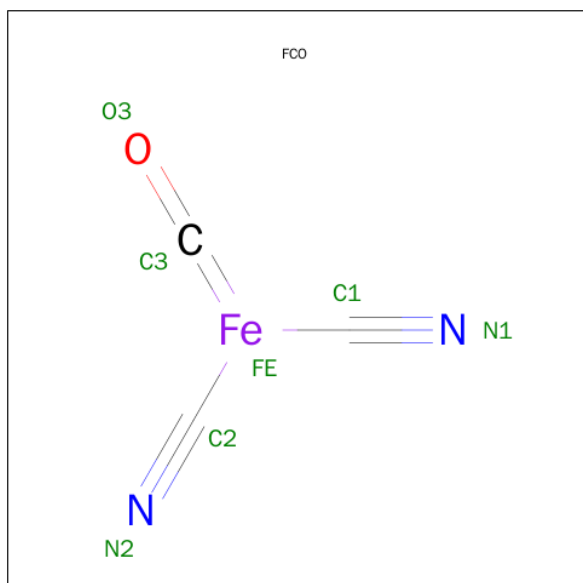
Chain	Residue	Modelled	Actual	Comment	Reference
S	328	ARG	-	EXPRESSION TAG	UNP P69739
S	329	SER	-	EXPRESSION TAG	UNP P69739
S	330	HIS	-	EXPRESSION TAG	UNP P69739
S	331	HIS	-	EXPRESSION TAG	UNP P69739
S	332	HIS	-	EXPRESSION TAG	UNP P69739
S	333	HIS	-	EXPRESSION TAG	UNP P69739
S	334	HIS	-	EXPRESSION TAG	UNP P69739
S	335	HIS	-	EXPRESSION TAG	UNP P69739
T	328	ARG	-	EXPRESSION TAG	UNP P69739
T	329	SER	-	EXPRESSION TAG	UNP P69739

*Continued on next page...*

Continued from previous page...

Chain	Residue	Modelled	Actual	Comment	Reference
T	330	HIS	-	EXPRESSION TAG	UNP P69739
T	331	HIS	-	EXPRESSION TAG	UNP P69739
T	332	HIS	-	EXPRESSION TAG	UNP P69739
T	333	HIS	-	EXPRESSION TAG	UNP P69739
T	334	HIS	-	EXPRESSION TAG	UNP P69739
T	335	HIS	-	EXPRESSION TAG	UNP P69739

- Molecule 3 is CARBONMONOXIDE-(DICYANO) IRON (three-letter code: FCO) (formula:  $C_3FeN_2O$ ).



Mol	Chain	Residues	Atoms					ZeroOcc	AltConf
3	L	1	Total	C	Fe	N	O	0	0
			7	3	1	2	1		
3	M	1	Total	C	Fe	N	O	0	0
			7	3	1	2	1		

- Molecule 4 is NICKEL (II) ION (three-letter code: NI) (formula: Ni).

Mol	Chain	Residues	Atoms		ZeroOcc	AltConf
4	L	1	Total	Ni	0	0
			1	1		
4	M	1	Total	Ni	0	0
			1	1		

- Molecule 5 is MAGNESIUM ION (three-letter code: MG) (formula: Mg).

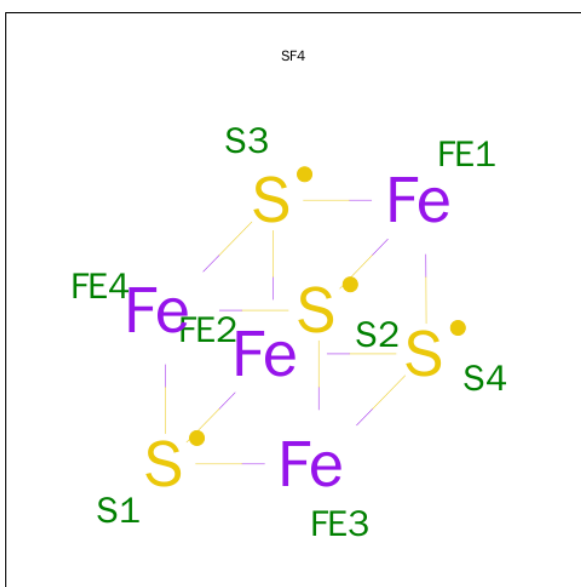
Mol	Chain	Residues	Atoms	ZeroOcc	AltConf
5	L	1	Total Mg 1 1	0	0
5	M	1	Total Mg 1 1	0	0

- Molecule 6 is SULFATE ION (three-letter code: SO4) (formula: O<sub>4</sub>S).



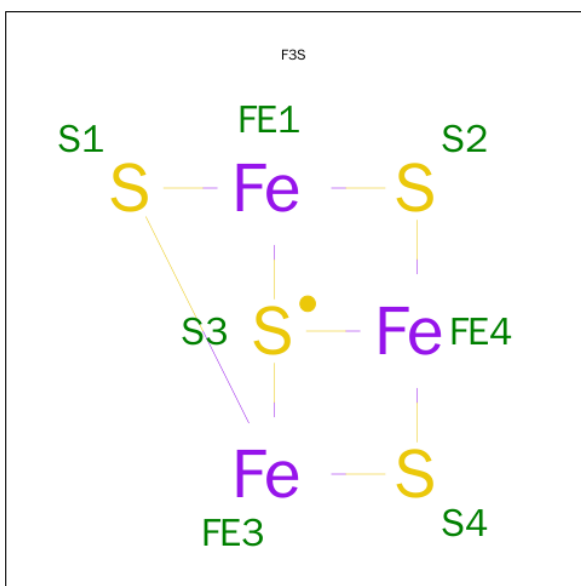
Mol	Chain	Residues	Atoms	ZeroOcc	AltConf
6	M	1	Total O S 5 4 1	0	0
6	S	1	Total O S 5 4 1	0	0

- Molecule 7 is IRON/SULFUR CLUSTER (three-letter code: SF4) (formula: Fe<sub>4</sub>S<sub>4</sub>).



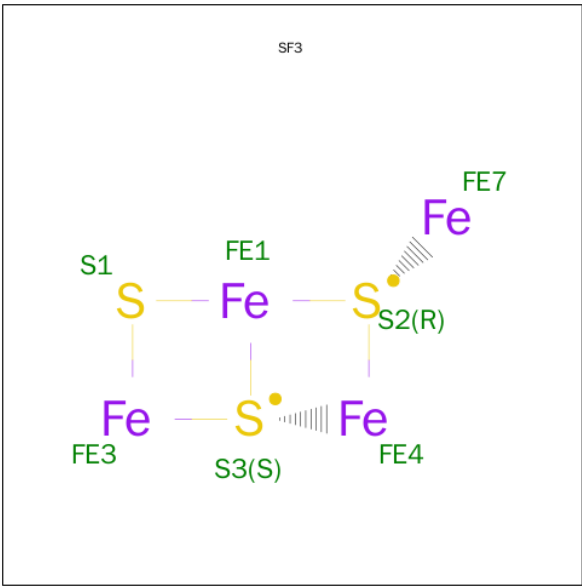
Mol	Chain	Residues	Atoms			ZeroOcc	AltConf
7	S	1	Total	Fe	S	0	0
			8	4	4		
7	T	1	Total	Fe	S	0	0
			8	4	4		

- Molecule 8 is FE3-S4 CLUSTER (three-letter code: F3S) (formula:  $\text{Fe}_3\text{S}_4$ ).



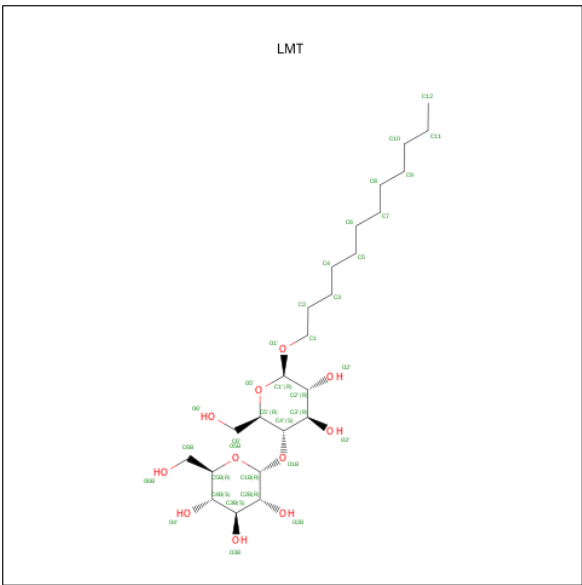
Mol	Chain	Residues	Atoms			ZeroOcc	AltConf
8	S	1	Total	Fe	S	0	0
			7	3	4		
8	T	1	Total	Fe	S	0	0
			7	3	4		

- Molecule 9 is FE4-S3 CLUSTER (three-letter code: SF3) (formula: Fe<sub>4</sub>S<sub>3</sub>).



Mol	Chain	Residues	Atoms			ZeroOcc	AltConf
9	S	1	Total	Fe	S	0	1
			8	5	3		
9	T	1	Total	Fe	S	0	1
			8	5	3		

- Molecule 10 is DODECYL-BETA-D-MALTOSIDE (three-letter code: LMT) (formula: C<sub>24</sub>H<sub>46</sub>O<sub>11</sub>).





Mol	Chain	Residues	Atoms			ZeroOcc	AltConf
10	S	1	Total	C	O	0	0
			14	13	1		
10	T	1	Total	C	O	0	0
			14	13	1		

- Molecule 11 is CHLORIDE ION (three-letter code: CL) (formula: Cl).

Mol	Chain	Residues	Atoms		ZeroOcc	AltConf
11	T	2	Total	Cl	0	0
			2	2		
11	S	2	Total	Cl	0	0
			2	2		

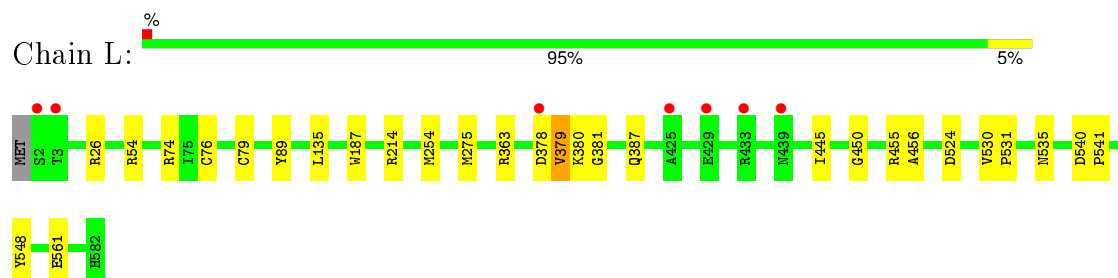
- Molecule 12 is water.

Mol	Chain	Residues	Atoms		ZeroOcc	AltConf
12	L	347	Total	O	0	0
			347	347		
12	M	367	Total	O	0	0
			367	367		
12	S	121	Total	O	0	0
			121	121		
12	T	100	Total	O	0	0
			100	100		

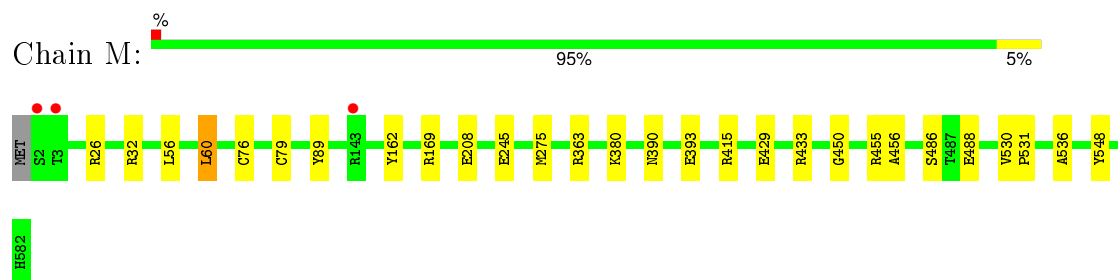
### 3 Residue-property plots

These plots are drawn for all protein, RNA and DNA chains in the entry. The first graphic for a chain summarises the proportions of errors displayed in the second graphic. The second graphic shows the sequence view annotated by issues in geometry and electron density. Residues are color-coded according to the number of geometric quality criteria for which they contain at least one outlier: green = 0, yellow = 1, orange = 2 and red = 3 or more. A red dot above a residue indicates a poor fit to the electron density ( $RSRZ > 2$ ). Stretches of 2 or more consecutive residues without any outlier are shown as a green connector. Residues present in the sample, but not in the model, are shown in grey.

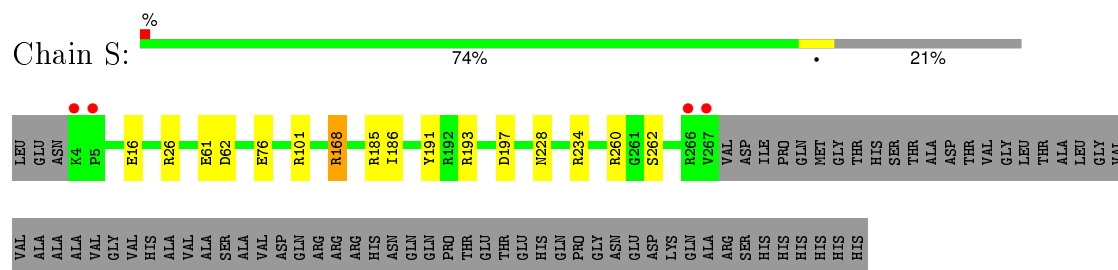
#### • Molecule 1: HYDROGENASE-1 LARGE CHAIN



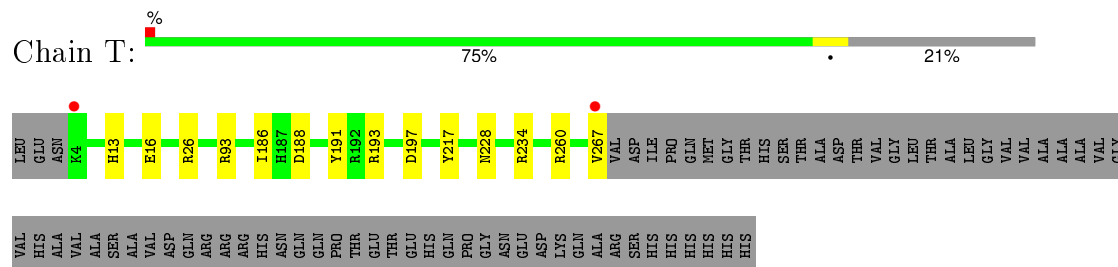
#### • Molecule 1: HYDROGENASE-1 LARGE CHAIN



#### • Molecule 2: HYDROGENASE-1 SMALL CHAIN



#### • Molecule 2: HYDROGENASE-1 SMALL CHAIN



## 4 Data and refinement statistics

Property	Value	Source
Space group	P 21 21 21	Depositor
Cell constants a, b, c, $\alpha$ , $\beta$ , $\gamma$	93.78Å 97.58Å 182.88Å 90.00° 90.00° 90.00°	Depositor
Resolution (Å)	32.19 – 1.23 32.17 – 1.23	Depositor EDS
% Data completeness (in resolution range)	97.2 (32.19-1.23) 97.2 (32.17-1.23)	Depositor EDS
$R_{merge}$	0.12	Depositor
$R_{sym}$	(Not available)	Depositor
$\langle I/\sigma(I) \rangle$ <sup>1</sup>	1.66 (at 1.23Å)	Xtriage
Refinement program	REFMAC 5.8.0123	Depositor
R, $R_{free}$	0.124 , 0.147 0.137 , 0.157	Depositor DCC
$R_{free}$ test set	23652 reflections (5.31%)	DCC
Wilson B-factor (Å <sup>2</sup> )	11.8	Xtriage
Anisotropy	0.063	Xtriage
Bulk solvent $k_{sol}$ (e/Å <sup>3</sup> ), $B_{sol}$ (Å <sup>2</sup> )	0.40 , 40.9	EDS
Estimated twinning fraction	0.014 for k,h,-l	Xtriage
L-test for twinning <sup>2</sup>	$\langle  L  \rangle = 0.49$ , $\langle L^2 \rangle = 0.32$	Xtriage
Outliers	1 of 468794 reflections (0.000%)	Xtriage
$F_o, F_c$ correlation	0.98	EDS
Total number of atoms	14619	wwPDB-VP
Average B, all atoms (Å <sup>2</sup> )	14.0	wwPDB-VP

Xtriage's analysis on translational NCS is as follows: *The largest off-origin peak in the Patterson function is 6.94% of the height of the origin peak. No significant pseudotranslation is detected.*

<sup>1</sup>Intensities estimated from amplitudes.

<sup>2</sup>Theoretical values of  $\langle |L| \rangle$ ,  $\langle L^2 \rangle$  for acentric reflections are 0.5, 0.375 respectively for untwinned datasets, and 0.333, 0.2 for perfectly twinned datasets.

## 5 Model quality [i](#)

### 5.1 Standard geometry [i](#)

Bond lengths and bond angles in the following residue types are not validated in this section: NI, CSO, CL, SF4, LMT, MG, SF3, F3S, SO4, FCO

The Z score for a bond length (or angle) is the number of standard deviations the observed value is removed from the expected value. A bond length (or angle) with  $|Z| > 5$  is considered an outlier worth inspection. RMSZ is the root-mean-square of all Z scores of the bond lengths (or angles).

Mol	Chain	Bond lengths		Bond angles	
		RMSZ	# $ Z  > 5$	RMSZ	# $ Z  > 5$
1	L	0.70	1/4907 (0.0%)	0.87	10/6668 (0.1%)
1	M	0.71	1/4847 (0.0%)	0.86	15/6588 (0.2%)
2	S	0.78	2/2171 (0.1%)	1.00	10/2945 (0.3%)
2	T	0.75	1/2182 (0.0%)	0.96	7/2959 (0.2%)
All	All	0.73	5/14107 (0.0%)	0.90	42/19160 (0.2%)

Chiral center outliers are detected by calculating the chiral volume of a chiral center and verifying if the center is modelled as a planar moiety or with the opposite hand. A planarity outlier is detected by checking planarity of atoms in a peptide group, atoms in a mainchain group or atoms of a sidechain that are expected to be planar.

Mol	Chain	#Chirality outliers	#Planarity outliers
2	S	0	1
2	T	0	1
All	All	0	2

All (5) bond length outliers are listed below:

Mol	Chain	Res	Type	Atoms	Z	Observed(Å)	Ideal(Å)
2	T	260	ARG	CZ-NH1	7.27	1.42	1.33
2	S	260	ARG	CZ-NH1	7.07	1.42	1.33
1	L	561	GLU	CD-OE1	6.23	1.32	1.25
2	S	262	SER	CB-OG	5.91	1.50	1.42
1	M	245	GLU	CD-OE1	-5.30	1.19	1.25

All (42) bond angle outliers are listed below:

Mol	Chain	Res	Type	Atoms	Z	Observed(°)	Ideal(°)
2	T	260	ARG	NE-CZ-NH2	-12.56	114.02	120.30
2	S	197	ASP	CB-CG-OD1	11.80	128.92	118.30

*Continued on next page...*

*Continued from previous page...*

Mol	Chain	Res	Type	Atoms	Z	Observed(°)	Ideal(°)
2	T	197	ASP	CB-CG-OD1	11.45	128.61	118.30
2	S	260	ARG	NE-CZ-NH2	-11.03	114.79	120.30
2	S	260	ARG	NE-CZ-NH1	9.89	125.25	120.30
2	T	260	ARG	NE-CZ-NH1	9.78	125.19	120.30
1	M	363	ARG	NE-CZ-NH1	8.61	124.61	120.30
1	L	26	ARG	NE-CZ-NH1	8.08	124.34	120.30
2	T	193	ARG	NE-CZ-NH1	7.71	124.15	120.30
2	S	185	ARG	NE-CZ-NH1	7.25	123.92	120.30
1	M	89	TYR	CB-CG-CD2	-6.93	116.84	121.00
1	M	89	TYR	CB-CG-CD1	6.81	125.09	121.00
2	T	93	ARG	NE-CZ-NH1	6.64	123.62	120.30
2	S	197	ASP	CB-CG-OD2	-6.56	112.39	118.30
1	L	455	ARG	NE-CZ-NH2	-6.34	117.13	120.30
2	S	185	ARG	NE-CZ-NH2	-6.25	117.17	120.30
1	L	363[A]	ARG	NE-CZ-NH2	-6.10	117.25	120.30
1	L	363[B]	ARG	NE-CZ-NH2	-6.10	117.25	120.30
2	T	188	ASP	CB-CG-OD1	6.06	123.75	118.30
2	T	193	ARG	NE-CZ-NH2	-6.04	117.28	120.30
1	M	455	ARG	NE-CZ-NH2	-6.03	117.29	120.30
1	L	54	ARG	NE-CZ-NH2	-5.87	117.36	120.30
1	L	89	TYR	CB-CG-CD1	5.71	124.43	121.00
1	M	433[A]	ARG	NE-CZ-NH1	5.64	123.12	120.30
1	M	433[B]	ARG	NE-CZ-NH1	5.64	123.12	120.30
2	S	168	ARG	NE-CZ-NH1	5.62	123.11	120.30
1	M	32	ARG	NE-CZ-NH1	5.39	122.99	120.30
2	S	193	ARG	NE-CZ-NH2	-5.37	117.61	120.30
1	L	74	ARG	NE-CZ-NH2	-5.35	117.62	120.30
2	S	168	ARG	NE-CZ-NH2	-5.30	117.65	120.30
1	M	433[A]	ARG	NE-CZ-NH2	-5.21	117.69	120.30
1	M	433[B]	ARG	NE-CZ-NH2	-5.21	117.69	120.30
1	M	32	ARG	NE-CZ-NH2	-5.21	117.70	120.30
1	M	415	ARG	NE-CZ-NH2	-5.20	117.70	120.30
1	M	60	LEU	CB-CG-CD2	5.19	119.82	111.00
1	L	214	ARG	NE-CZ-NH2	-5.19	117.71	120.30
1	L	379[A]	VAL	N-CA-C	-5.17	97.04	111.00
1	L	379[B]	VAL	N-CA-C	-5.17	97.04	111.00
1	M	26	ARG	NE-CZ-NH1	5.16	122.88	120.30
2	S	62	ASP	CB-CG-OD1	5.15	122.93	118.30
1	M	455	ARG	NE-CZ-NH1	5.15	122.87	120.30
1	M	169	ARG	NE-CZ-NH1	5.13	122.87	120.30

There are no chirality outliers.

All (2) planarity outliers are listed below:

Mol	Chain	Res	Type	Group
2	S	26	ARG	Sidechain
2	T	26	ARG	Sidechain

## 5.2 Too-close contacts

In the following table, the Non-H and H(model) columns list the number of non-hydrogen atoms and hydrogen atoms in the chain respectively. The H(added) column lists the number of hydrogen atoms added and optimized by MolProbity. The Clashes column lists the number of clashes within the asymmetric unit, whereas Symm-Clashes lists symmetry related clashes.

Mol	Chain	Non-H	H(model)	H(added)	Clashes	Symm-Clashes
1	L	4717	0	4658	12	0
1	M	4669	0	4603	13	0
2	S	2092	0	2039	5	0
2	T	2100	0	2058	5	0
3	L	7	0	0	0	0
3	M	7	0	0	0	0
4	L	1	0	0	0	0
4	M	1	0	0	0	0
5	L	1	0	0	0	0
5	M	1	0	0	0	0
6	M	5	0	0	0	0
6	S	5	0	0	0	0
7	S	8	0	0	0	0
7	T	8	0	0	0	0
8	S	7	0	0	0	0
8	T	7	0	0	0	0
9	S	8	0	0	0	0
9	T	8	0	0	0	0
10	S	14	0	25	0	0
10	T	14	0	25	0	0
11	S	2	0	0	0	0
11	T	2	0	0	0	0
12	L	347	0	0	0	0
12	M	367	0	0	1	0
12	S	121	0	0	1	0
12	T	100	0	0	1	0
All	All	14619	0	13408	33	0

The all-atom clashscore is defined as the number of clashes found per 1000 atoms (including hydrogen atoms). The all-atom clashscore for this structure is 1.

All (33) close contacts within the same asymmetric unit are listed below, sorted by their clash magnitude.

Atom-1	Atom-2	Interatomic distance (Å)	Clash overlap (Å)
2:S:61[B]:GLU:OE2	2:S:101[B]:ARG:NH1	1.60	1.34
2:S:234[A]:ARG:HD3	2:T:234[A]:ARG:NH1	1.68	1.08
1:L:275[B]:MET:HE2	1:L:456:ALA:HA	1.68	0.76
1:L:254[B]:MET:HA	1:L:254[B]:MET:HE2	1.77	0.66
1:L:378:ASP:OD1	1:L:379[A]:VAL:O	2.15	0.64
1:M:76:CYS:CB	1:M:79:CSO:OD	2.46	0.61
1:M:429[B]:GLU:HG3	12:M:2309:HOH:O	2.00	0.60
1:L:76:CYS:CB	1:L:79:CSO:OD	2.44	0.59
1:L:135:LEU:HD22	1:L:187:TRP:CD1	2.37	0.59
1:M:275[B]:MET:HE2	1:M:456:ALA:HA	1.86	0.57
2:S:234[A]:ARG:CD	2:T:234[A]:ARG:NH1	2.56	0.57
1:M:76:CYS:HB3	1:M:79:CSO:OD	2.04	0.54
1:L:76:CYS:HB3	1:L:79:CSO:OD	2.05	0.54
1:L:530:VAL:CG1	1:L:531:PRO:HD2	2.39	0.53
2:T:13:HIS:HD2	12:T:2003:HOH:O	1.96	0.47
1:L:530:VAL:HG12	1:L:531:PRO:HD2	1.96	0.47
1:M:530:VAL:CG1	1:M:531:PRO:HD2	2.45	0.47
2:T:186:ILE:HD11	2:T:228:ASN:HB3	1.98	0.46
2:S:76[B]:GLU:HG3	12:S:2003:HOH:O	2.17	0.45
1:L:380[A]:LYS:O	1:L:387:GLN:HB2	2.18	0.44
2:T:217:TYR:HE1	2:T:267:VAL:HG12	1.82	0.44
1:M:162:TYR:OH	1:M:208[B]:GLU:OE2	2.27	0.44
2:S:186:ILE:HD11	2:S:228:ASN:HB3	2.00	0.44
1:M:275[B]:MET:CE	1:M:456:ALA:HA	2.48	0.43
1:M:79:CSO:OD	1:M:79:CSO:N	2.53	0.42
1:M:486[A]:SER:OG	1:M:488[A]:GLU:OE2	2.29	0.42
1:L:535:ASN:HB3	1:L:548:TYR:CE1	2.55	0.41
1:M:390:ASN:ND2	1:M:393[B]:GLU:OE2	2.53	0.41
1:L:540:ASP:HB2	1:L:541:PRO:CD	2.50	0.41
1:M:536:ALA:HB2	1:M:548:TYR:CE2	2.56	0.40
1:M:56:LEU:O	1:M:60:LEU:HD23	2.22	0.40
1:L:445:ILE:O	1:L:450:GLY:HA3	2.21	0.40

There are no symmetry-related clashes.

## 5.3 Torsion angles [i](#)

### 5.3.1 Protein backbone [i](#)

In the following table, the Percentiles column shows the percent Ramachandran outliers of the chain as a percentile score with respect to all X-ray entries followed by that with respect to entries of similar resolution.

The Analysed column shows the number of residues for which the backbone conformation was analysed, and the total number of residues.

Mol	Chain	Analysed	Favoured	Allowed	Outliers	Percentiles	
1	L	607/582 (104%)	591 (97%)	14 (2%)	2 (0%)	46	17
1	M	600/582 (103%)	587 (98%)	13 (2%)	0	100	100
2	S	271/335 (81%)	259 (96%)	12 (4%)	0	100	100
2	T	272/335 (81%)	259 (95%)	13 (5%)	0	100	100
All	All	1750/1834 (95%)	1696 (97%)	52 (3%)	2 (0%)	56	21

All (2) Ramachandran outliers are listed below:

Mol	Chain	Res	Type
1	L	381[A]	GLY
1	L	381[B]	GLY

### 5.3.2 Protein sidechains [i](#)

In the following table, the Percentiles column shows the percent sidechain outliers of the chain as a percentile score with respect to all X-ray entries followed by that with respect to entries of similar resolution.

The Analysed column shows the number of residues for which the sidechain conformation was analysed, and the total number of residues.

Mol	Chain	Analysed	Rotameric	Outliers	Percentiles	
1	L	507/480 (106%)	506 (100%)	1 (0%)	95	80
1	M	501/480 (104%)	499 (100%)	2 (0%)	93	77
2	S	226/274 (82%)	222 (98%)	4 (2%)	66	26
2	T	227/274 (83%)	224 (99%)	3 (1%)	76	39
All	All	1461/1508 (97%)	1451 (99%)	10 (1%)	92	64

All (10) residues with a non-rotameric sidechain are listed below:



Mol	Chain	Res	Type
1	L	524	ASP
1	M	380[A]	LYS
1	M	380[B]	LYS
2	S	16[A]	GLU
2	S	16[B]	GLU
2	S	168	ARG
2	S	191	TYR
2	T	16[A]	GLU
2	T	16[B]	GLU
2	T	191	TYR

Some sidechains can be flipped to improve hydrogen bonding and reduce clashes. All (1) such sidechains are listed below:

Mol	Chain	Res	Type
1	M	387	GLN

### 5.3.3 RNA ⓘ

There are no RNA molecules in this entry.

## 5.4 Non-standard residues in protein, DNA, RNA chains ⓘ

2 non-standard protein/DNA/RNA residues are modelled in this entry.

In the following table, the Counts columns list the number of bonds (or angles) for which Mogul statistics could be retrieved, the number of bonds (or angles) that are observed in the model and the number of bonds (or angles) that are defined in the chemical component dictionary. The Link column lists molecule types, if any, to which the group is linked. The Z score for a bond length (or angle) is the number of standard deviations the observed value is removed from the expected value. A bond length (or angle) with  $|Z| > 2$  is considered an outlier worth inspection. RMSZ is the root-mean-square of all Z scores of the bond lengths (or angles).

Mol	Type	Chain	Res	Link	Bond lengths			Bond angles		
					Counts	RMSZ	$\# Z  > 2$	Counts	RMSZ	$\# Z  > 2$
1	CSO	L	79	1,3,4	3,6,7	1.25	0	2,6,8	0.75	0
1	CSO	M	79	1,3,4	3,6,7	2.32	1 (33%)	2,6,8	1.22	0

In the following table, the Chirals column lists the number of chiral outliers, the number of chiral centers analysed, the number of these observed in the model and the number defined in the chemical component dictionary. Similar counts are reported in the Torsion and Rings columns. '-' means no outliers of that kind were identified.

Mol	Type	Chain	Res	Link	Chirals	Torsions	Rings
1	CSO	L	79	1,3,4	-	0/1/5/7	0/0/0/0
1	CSO	M	79	1,3,4	-	0/1/5/7	0/0/0/0

All (1) bond length outliers are listed below:

Mol	Chain	Res	Type	Atoms	Z	Observed(Å)	Ideal(Å)
1	M	79	CSO	CB-SG	-3.90	1.76	1.82

There are no bond angle outliers.

There are no chirality outliers.

There are no torsion outliers.

There are no ring outliers.

2 monomers are involved in 5 short contacts:

Mol	Chain	Res	Type	Clashes	Symm-Clashes
1	L	79	CSO	2	0
1	M	79	CSO	3	0

## 5.5 Carbohydrates [i](#)

There are no carbohydrates in this entry.

## 5.6 Ligand geometry [i](#)

Of 22 ligands modelled in this entry, 8 are monoatomic - leaving 14 for Mogul analysis.

In the following table, the Counts columns list the number of bonds (or angles) for which Mogul statistics could be retrieved, the number of bonds (or angles) that are observed in the model and the number of bonds (or angles) that are defined in the chemical component dictionary. The Link column lists molecule types, if any, to which the group is linked. The Z score for a bond length (or angle) is the number of standard deviations the observed value is removed from the expected value. A bond length (or angle) with  $|Z| > 2$  is considered an outlier worth inspection. RMSZ is the root-mean-square of all Z scores of the bond lengths (or angles).

Mol	Type	Chain	Res	Link	Bond lengths			Bond angles		
					Counts	RMSZ	$\# Z  > 2$	Counts	RMSZ	$\# Z  > 2$
3	FCO	L	601	1,12,4	0,6,6	0.00	-	0,6,6	0.00	-
3	FCO	M	601	1,12,4	0,6,6	0.00	-	0,6,6	0.00	-
6	SO4	M	604	-	4,4,4	0.82	0	6,6,6	0.53	0
7	SF4	S	401	2	0,12,12	0.00	-	0,24,24	0.00	-
8	F3S	S	402	2	0,9,9	0.00	-	0,15,15	0.00	-

Mol	Type	Chain	Res	Link	Bond lengths			Bond angles		
					Counts	RMSZ	# Z  > 2	Counts	RMSZ	# Z  > 2
9	SF3	S	403[B]	9,12,2	0,8,8	0.00	-	0,12,12	0.00	-
9	SF3	S	403[C]	9,12,2	0,8,8	0.00	-	0,12,12	0.00	-
10	LMT	S	404	-	13,13,36	0.48	0	12,12,47	0.94	0
6	SO4	S	407	-	4,4,4	0.71	0	6,6,6	0.96	0
7	SF4	T	401	2	0,12,12	0.00	-	0,24,24	0.00	-
8	F3S	T	402	2	0,9,9	0.00	-	0,15,15	0.00	-
9	SF3	T	403[B]	9,2	0,8,8	0.00	-	0,12,12	0.00	-
9	SF3	T	403[C]	9,2	0,8,8	0.00	-	0,12,12	0.00	-
10	LMT	T	404	-	13,13,36	0.39	0	12,12,47	0.54	0

In the following table, the Chirals column lists the number of chiral outliers, the number of chiral centers analysed, the number of these observed in the model and the number defined in the chemical component dictionary. Similar counts are reported in the Torsion and Rings columns. '-' means no outliers of that kind were identified.

Mol	Type	Chain	Res	Link	Chirals	Torsions	Rings
3	FCO	L	601	1,12,4	-	0/0/6/6	0/0/0/0
3	FCO	M	601	1,12,4	-	0/0/6/6	0/0/0/0
6	SO4	M	604	-	-	0/0/0/0	0/0/0/0
7	SF4	S	401	2	-	0/0/48/48	0/6/5/5
8	F3S	S	402	2	-	0/0/24/24	0/0/3/3
9	SF3	S	403[B]	9,12,2	-	0/0/17/17	0/2/2/2
9	SF3	S	403[C]	9,12,2	-	0/0/17/17	0/2/2/2
10	LMT	S	404	-	-	0/11/11/61	0/0/0/2
6	SO4	S	407	-	-	0/0/0/0	0/0/0/0
7	SF4	T	401	2	-	0/0/48/48	0/6/5/5
8	F3S	T	402	2	-	0/0/24/24	0/0/3/3
9	SF3	T	403[B]	9,2	-	0/0/17/17	0/2/2/2
9	SF3	T	403[C]	9,2	-	0/0/17/17	0/2/2/2
10	LMT	T	404	-	-	0/11/11/61	0/0/0/2

There are no bond length outliers.

There are no bond angle outliers.

There are no chirality outliers.

There are no torsion outliers.

There are no ring outliers.

No monomer is involved in short contacts.

## 5.7 Other polymers

There are no such residues in this entry.

## 5.8 Polymer linkage issues

There are no chain breaks in this entry.

## 6 Fit of model and data ⓘ

### 6.1 Protein, DNA and RNA chains ⓘ

In the following table, the column labelled ‘#RSRZ> 2’ contains the number (and percentage) of RSRZ outliers, followed by percent RSRZ outliers for the chain as percentile scores relative to all X-ray entries and entries of similar resolution. The OWAB column contains the minimum, median, 95<sup>th</sup> percentile and maximum values of the occupancy-weighted average B-factor per residue. The column labelled ‘Q< 0.9’ lists the number of (and percentage) of residues with an average occupancy less than 0.9.

Mol	Chain	Analysed	<RSRZ>	#RSRZ>2	OWAB(Å <sup>2</sup> )	Q<0.9
1	L	580/582 (99%)	-0.46	7 (1%) 81 77	8, 13, 25, 49	0
1	M	580/582 (99%)	-0.51	3 (0%) 91 91	8, 12, 22, 34	0
2	S	264/335 (78%)	-0.53	4 (1%) 76 72	7, 11, 20, 51	0
2	T	264/335 (78%)	-0.48	2 (0%) 87 86	8, 12, 22, 55	0
All	All	1688/1834 (92%)	-0.49	16 (0%) 85 84	7, 12, 23, 55	0

All (16) RSRZ outliers are listed below:

Mol	Chain	Res	Type	RSRZ
2	T	4	LYS	5.1
2	T	267	VAL	4.7
1	L	2	SER	3.9
2	S	267	VAL	3.7
2	S	4	LYS	3.6
1	M	3	THR	3.6
1	L	3	THR	3.5
1	M	2	SER	3.4
1	L	433	ARG	2.6
1	L	378	ASP	2.6
1	L	425	ALA	2.6
1	M	143	ARG	2.6
1	L	439[A]	ASN	2.3
1	L	429[A]	GLU	2.2
2	S	5	PRO	2.2
2	S	266	ARG	2.0

### 6.2 Non-standard residues in protein, DNA, RNA chains ⓘ

In the following table, the Atoms column lists the number of modelled atoms in the group and the number defined in the chemical component dictionary. LLDF column lists the quality of electron

density of the group with respect to its neighbouring residues in protein, DNA or RNA chains. The B-factors column lists the minimum, median, 95<sup>th</sup> percentile and maximum values of B factors of atoms in the group. The column labelled 'Q< 0.9' lists the number of atoms with occupancy less than 0.9.

Mol	Type	Chain	Res	Atoms	RSCC	RSR	LLDF	B-factors(Å <sup>2</sup> )	Q<0.9
1	CSO	M	79	7/8	0.99	0.05	-	10,10,13,19	0
1	CSO	L	79	7/8	0.98	0.06	-	10,10,14,21	0

### 6.3 Carbohydrates ⓘ

There are no carbohydrates in this entry.

### 6.4 Ligands ⓘ

In the following table, the Atoms column lists the number of modelled atoms in the group and the number defined in the chemical component dictionary. LLDF column lists the quality of electron density of the group with respect to its neighbouring residues in protein, DNA or RNA chains. The B-factors column lists the minimum, median, 95<sup>th</sup> percentile and maximum values of B factors of atoms in the group. The column labelled 'Q< 0.9' lists the number of atoms with occupancy less than 0.9.

Mol	Type	Chain	Res	Atoms	RSCC	RSR	LLDF	B-factors(Å <sup>2</sup> )	Q<0.9
6	SO4	S	407	5/5	0.97	0.19	10.29	22,23,28,30	0
10	LMT	S	404	14/35	0.85	0.11	3.41	23,31,39,43	0
10	LMT	T	404	14/35	0.85	0.13	2.55	25,30,41,42	0
5	MG	M	603	1/1	1.00	0.10	2.36	7,7,7,7	0
5	MG	L	603	1/1	1.00	0.07	0.21	7,7,7,7	0
9	SF3	T	403[C]	7/7	0.99	0.04	-1.06	10,11,14,22	1
9	SF3	T	403[B]	7/7	0.99	0.04	-1.06	8,11,12,14	1
11	CL	S	406	1/1	1.00	0.04	-1.21	22,22,22,22	0
9	SF3	S	403[C]	7/7	0.99	0.04	-1.22	9,11,13,20	1
9	SF3	S	403[B]	7/7	0.99	0.04	-1.22	7,10,12,13	1
11	CL	T	406	1/1	1.00	0.05	-1.31	24,24,24,24	0
8	F3S	S	402	7/7	1.00	0.03	-1.35	9,9,10,10	0
8	F3S	T	402	7/7	1.00	0.04	-1.36	9,9,10,10	0
3	FCO	M	601	7/7	1.00	0.05	-1.42	8,8,9,10	0
3	FCO	L	601	7/7	1.00	0.05	-1.54	8,9,9,10	0
7	SF4	T	401	8/8	1.00	0.03	-1.61	8,9,9,9	0
11	CL	T	405	1/1	1.00	0.02	-1.78	14,14,14,14	0
7	SF4	S	401	8/8	1.00	0.03	-1.94	8,9,9,9	0
11	CL	S	405	1/1	1.00	0.02	-1.95	13,13,13,13	0
6	SO4	M	604	5/5	0.94	0.27	-	39,43,52,57	0

*Continued on next page...*

*Continued from previous page...*

Mol	Type	Chain	Res	Atoms	RSCC	RSR	LLDF	B-factors( $\text{\AA}^2$ )	Q<0.9
4	NI	L	602	1/1	1.00	0.02	-	13,13,13,13	0
4	NI	M	602	1/1	1.00	0.02	-	13,13,13,13	0

## 6.5 Other polymers [i](#)

There are no such residues in this entry.