



wwPDB X-ray Structure Validation Summary Report ⓘ

Jan 31, 2016 – 06:19 PM GMT

PDB ID : 1A69
Title : PURINE NUCLEOSIDE PHOSPHORYLASE IN COMPLEX WITH
FORMYCIN B AND SULPHATE (PHOSPHATE)
Authors : Koellner, G.; Luic, M.; Shugar, D.; Saenger, W.; Bzowska, A.
Deposited on : 1998-03-08
Resolution : 2.10 Å(reported)

This is a wwPDB X-ray Structure Validation Summary Report for a publicly released PDB entry.
We welcome your comments at validation@mail.wwpdb.org
A user guide is available at
<http://wwpdb.org/validation/2016/XrayValidationReportHelp>
with specific help available everywhere you see the ⓘ symbol.

The following versions of software and data (see [references ⓘ](#)) were used in the production of this report:

MolProbity : 4.02b-467
Mogul : 1.7 (RC4), CSD as536be (2015)
Xtriage (Phenix) : **NOT EXECUTED**
EDS : **NOT EXECUTED**
Percentile statistics : 20151230.v01 (using entries in the PDB archive December 30th 2015)
Ideal geometry (proteins) : Engh & Huber (2001)
Ideal geometry (DNA, RNA) : Parkinson et al. (1996)
Validation Pipeline (wwPDB-VP) : trunk26865

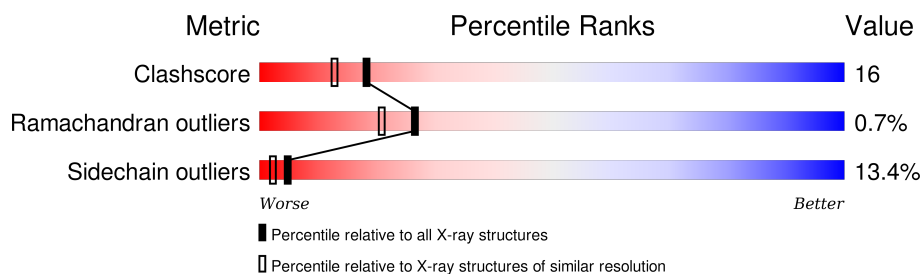
1 Overall quality at a glance

The following experimental techniques were used to determine the structure:

X-RAY DIFFRACTION

The reported resolution of this entry is 2.10 Å.

Percentile scores (ranging between 0-100) for global validation metrics of the entry are shown in the following graphic. The table shows the number of entries on which the scores are based.



Metric	Whole archive (#Entries)	Similar resolution (#Entries, resolution range(Å))
Clashscore	102246	4460 (2.10-2.10)
Ramachandran outliers	100387	4413 (2.10-2.10)
Sidechain outliers	100360	4414 (2.10-2.10)

The table below summarises the geometric issues observed across the polymeric chains and their fit to the electron density. The red, orange, yellow and green segments on the lower bar indicate the fraction of residues that contain outliers for ≥ 3 , 2, 1 and 0 types of geometric quality criteria. A grey segment represents the fraction of residues that are not modelled. The numeric value for each fraction is indicated below the corresponding segment, with a dot representing fractions $\leq 5\%$. The upper red bar (where present) indicates the fraction of residues that have poor fit to the electron density. The numeric value is given above the bar.

Note EDS was not executed.

Mol	Chain	Length	Quality of chain
1	A	238	 64% 29% 6% •
1	B	238	 66% 25% 8%
1	C	238	 65% 26% 8% •

The following table lists non-polymeric compounds, carbohydrate monomers and non-standard residues in protein, DNA, RNA chains that are outliers for geometric or electron-density-fit criteria:

Mol	Type	Chain	Res	Chirality	Geometry	Clashes	Electron density
2	SO4	B	239	-	-	X	-

2 Entry composition [i](#)

There are 4 unique types of molecules in this entry. The entry contains 5751 atoms, of which 0 are hydrogens and 0 are deuteriums.

In the tables below, the ZeroOcc column contains the number of atoms modelled with zero occupancy, the AltConf column contains the number of residues with at least one atom in alternate conformation and the Trace column contains the number of residues modelled with at most 2 atoms.

- Molecule 1 is a protein called PURINE NUCLEOSIDE PHOSPHORYLASE.

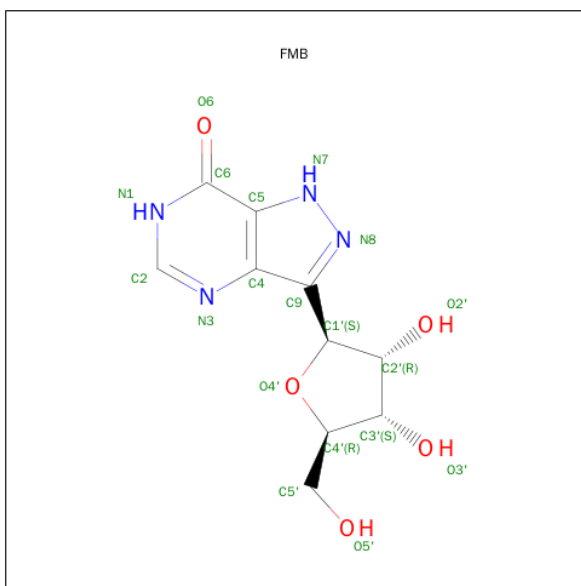
Mol	Chain	Residues	Atoms					ZeroOcc	AltConf	Trace
1	A	237	Total	C	N	O	S	0	2	0
			1790	1131	305	339	15			
1	B	237	Total	C	N	O	S	0	1	0
			1760	1116	298	331	15			
1	C	233	Total	C	N	O	S	0	1	0
			1753	1109	298	331	15			

- Molecule 2 is SULFATE ION (three-letter code: SO4) (formula: O₄S).



Mol	Chain	Residues	Atoms			ZeroOcc	AltConf
2	A	1	Total	O	S	0	0
			5	4	1		
2	B	1	Total	O	S	0	0
			5	4	1		
2	C	1	Total	O	S	0	0
			5	4	1		

- Molecule 3 is FORMYCIN B (three-letter code: FMB) (formula: $C_{10}H_{12}N_4O_5$).



Mol	Chain	Residues	Atoms				ZeroOcc	AltConf
3	A	1	Total	C	N	O	0	0
			19	10	4	5		
3	B	1	Total	C	N	O	0	0
			19	10	4	5		
3	C	1	Total	C	N	O	0	0
			19	10	4	5		

- Molecule 4 is water.

Mol	Chain	Residues	Atoms		ZeroOcc	AltConf
4	A	119	Total	O	0	0
			119	119		
4	B	124	Total	O	0	0
			124	124		
4	C	133	Total	O	0	0
			133	133		

4 Data and refinement statistics

Xtriage (Phenix) and EDS were not executed - this section will therefore be incomplete.

Property	Value	Source
Space group	P 61 2 2	Depositor
Cell constants a, b, c, α , β , γ	123.11Å 123.11Å 241.22Å 90.00° 90.00° 120.00°	Depositor
Resolution (Å)	20.00 – 2.10	Depositor
% Data completeness (in resolution range)	98.3 (20.00-2.10)	Depositor
R_{merge}	(Not available)	Depositor
R_{sym}	0.14	Depositor
Refinement program	TNT V. 5-E	Depositor
R, R_{free}	0.196 , (Not available)	Depositor
Estimated twinning fraction	No twinning to report.	Xtriage
Total number of atoms	5751	wwPDB-VP
Average B, all atoms (Å ²)	26.0	wwPDB-VP

5 Model quality ⓘ

5.1 Standard geometry ⓘ

Bond lengths and bond angles in the following residue types are not validated in this section: FMB, SO4

The Z score for a bond length (or angle) is the number of standard deviations the observed value is removed from the expected value. A bond length (or angle) with $|Z| > 5$ is considered an outlier worth inspection. RMSZ is the root-mean-square of all Z scores of the bond lengths (or angles).

Mol	Chain	Bond lengths		Bond angles	
		RMSZ	$\# Z > 5$	RMSZ	$\# Z > 5$
1	A	0.78	6/1831 (0.3%)	1.09	32/2472 (1.3%)
1	B	0.76	6/1794 (0.3%)	1.08	34/2422 (1.4%)
1	C	0.77	6/1786 (0.3%)	1.13	32/2409 (1.3%)
All	All	0.77	18/5411 (0.3%)	1.10	98/7303 (1.3%)

The worst 5 of 18 bond length outliers are listed below:

Mol	Chain	Res	Type	Atoms	Z	Observed(Å)	Ideal(Å)
1	B	8	GLU	CD-OE2	6.43	1.32	1.25
1	A	34	GLU	CD-OE2	6.32	1.32	1.25
1	B	34	GLU	CD-OE2	6.25	1.32	1.25
1	A	165	GLU	CD-OE2	6.24	1.32	1.25
1	B	165	GLU	CD-OE2	6.10	1.32	1.25

The worst 5 of 98 bond angle outliers are listed below:

Mol	Chain	Res	Type	Atoms	Z	Observed(°)	Ideal(°)
1	B	112	ASP	CB-CG-OD2	-7.26	111.77	118.30
1	A	157	ASP	CB-CG-OD2	-7.25	111.77	118.30
1	C	112	ASP	CB-CG-OD2	-7.00	112.00	118.30
1	C	157	ASP	CB-CG-OD2	-6.98	112.02	118.30
1	A	204	ASP	CB-CG-OD2	-6.94	112.05	118.30

There are no chirality outliers.

There are no planarity outliers.

5.2 Too-close contacts ⓘ

In the following table, the Non-H and H(model) columns list the number of non-hydrogen atoms and hydrogen atoms in the chain respectively. The H(added) column lists the number of hydrogen atoms added and optimized by MolProbity. The Clashes column lists the number of clashes within the asymmetric unit, whereas Symm-Clashes lists symmetry related clashes.

Mol	Chain	Non-H	H(model)	H(added)	Clashes	Symm-Clashes
1	A	1790	0	1775	67	0
1	B	1760	0	1736	57	0
1	C	1753	0	1743	50	0
2	A	5	0	0	0	0
2	B	5	0	0	2	0
2	C	5	0	0	0	0
3	A	19	0	12	2	0
3	B	19	0	12	0	0
3	C	19	0	12	0	0
4	A	119	0	0	5	0
4	B	124	0	0	4	0
4	C	133	0	0	4	1
All	All	5751	0	5290	167	1

The all-atom clashscore is defined as the number of clashes found per 1000 atoms (including hydrogen atoms). The all-atom clashscore for this structure is 16.

The worst 5 of 167 close contacts within the same asymmetric unit are listed below, sorted by their clash magnitude.

Atom-1	Atom-2	Interatomic distance (Å)	Clash overlap (Å)
1:A:29:ALA:HA	1:A:33[B]:LEU:HD23	1.38	1.04
1:B:20:GLY:H	1:B:24:ARG:NH2	1.59	1.01
1:A:29:ALA:HA	1:A:33[A]:LEU:HD23	1.38	1.00
1:B:20:GLY:H	1:B:24:ARG:HH22	1.10	0.93
1:A:6:ASN:HD21	1:A:41:ASN:ND2	1.67	0.92

All (1) symmetry-related close contacts are listed below. The label for Atom-2 includes the symmetry operator and encoded unit-cell translations to be applied.

Atom-1	Atom-2	Interatomic distance (Å)	Clash overlap (Å)
4:C:353:HOH:O	4:C:353:HOH:O[10_665]	2.13	0.07

5.3 Torsion angles [i](#)

5.3.1 Protein backbone [i](#)

In the following table, the Percentiles column shows the percent Ramachandran outliers of the chain as a percentile score with respect to all X-ray entries followed by that with respect to entries of similar resolution.

The Analysed column shows the number of residues for which the backbone conformation was analysed, and the total number of residues.

Mol	Chain	Analysed	Favoured	Allowed	Outliers	Percentiles	
1	A	237/238 (100%)	221 (93%)	14 (6%)	2 (1%)	24	17
1	B	236/238 (99%)	224 (95%)	9 (4%)	3 (1%)	15	9
1	C	230/238 (97%)	218 (95%)	12 (5%)	0	100	100
All	All	703/714 (98%)	663 (94%)	35 (5%)	5 (1%)	26	21

All (5) Ramachandran outliers are listed below:

Mol	Chain	Res	Type
1	B	209	HIS
1	A	216	GLU
1	B	207	ARG
1	B	208	THR
1	A	209	HIS

5.3.2 Protein sidechains [i](#)

In the following table, the Percentiles column shows the percent sidechain outliers of the chain as a percentile score with respect to all X-ray entries followed by that with respect to entries of similar resolution.

The Analysed column shows the number of residues for which the sidechain conformation was analysed, and the total number of residues.

Mol	Chain	Analysed	Rotameric	Outliers	Percentiles	
1	A	187/189 (99%)	162 (87%)	25 (13%)	5	2
1	B	179/189 (95%)	154 (86%)	25 (14%)	4	2
1	C	182/189 (96%)	159 (87%)	23 (13%)	5	3
All	All	548/567 (97%)	475 (87%)	73 (13%)	5	2

5 of 73 residues with a non-rotameric sidechain are listed below:

Mol	Chain	Res	Type
1	B	100	LEU
1	B	172	LYS
1	C	158	LEU
1	B	147	ASP
1	B	176	LEU

Some sidechains can be flipped to improve hydrogen bonding and reduce clashes. 5 of 16 such sidechains are listed below:

Mol	Chain	Res	Type
1	B	116	ASN
1	B	218	GLN
1	C	97	HIS
1	B	97	HIS
1	C	116	ASN

5.3.3 RNA [i](#)

There are no RNA molecules in this entry.

5.4 Non-standard residues in protein, DNA, RNA chains [i](#)

There are no non-standard protein/DNA/RNA residues in this entry.

5.5 Carbohydrates [i](#)

There are no carbohydrates in this entry.

5.6 Ligand geometry [i](#)

6 ligands are modelled in this entry.

In the following table, the Counts columns list the number of bonds (or angles) for which Mogul statistics could be retrieved, the number of bonds (or angles) that are observed in the model and the number of bonds (or angles) that are defined in the chemical component dictionary. The Link column lists molecule types, if any, to which the group is linked. The Z score for a bond length (or angle) is the number of standard deviations the observed value is removed from the expected value. A bond length (or angle) with $|Z| > 2$ is considered an outlier worth inspection. RMSZ is the root-mean-square of all Z scores of the bond lengths (or angles).

Mol	Type	Chain	Res	Link	Bond lengths			Bond angles		
					Counts	RMSZ	# Z > 2	Counts	RMSZ	# Z > 2
2	SO4	A	239	-	4,4,4	1.85	1 (25%)	6,6,6	0.57	0
3	FMB	A	240	-	20,21,21	1.67	5 (25%)	16,31,31	2.55	5 (31%)
2	SO4	B	239	-	4,4,4	2.24	1 (25%)	6,6,6	0.61	0
3	FMB	B	240	-	20,21,21	1.71	4 (20%)	16,31,31	2.73	5 (31%)
2	SO4	C	239	-	4,4,4	2.31	1 (25%)	6,6,6	0.48	0
3	FMB	C	240	-	20,21,21	1.64	5 (25%)	16,31,31	2.69	5 (31%)

In the following table, the Chirals column lists the number of chiral outliers, the number of chiral centers analysed, the number of these observed in the model and the number defined in the chemical component dictionary. Similar counts are reported in the Torsion and Rings columns. '-' means no outliers of that kind were identified.

Mol	Type	Chain	Res	Link	Chirals	Torsions	Rings
2	SO4	A	239	-	-	0/0/0/0	0/0/0/0
3	FMB	A	240	-	-	0/2/22/22	0/3/3/3
2	SO4	B	239	-	-	0/0/0/0	0/0/0/0
3	FMB	B	240	-	-	0/2/22/22	0/3/3/3
2	SO4	C	239	-	-	0/0/0/0	0/0/0/0
3	FMB	C	240	-	-	0/2/22/22	0/3/3/3

The worst 5 of 17 bond length outliers are listed below:

Mol	Chain	Res	Type	Atoms	Z	Observed(Å)	Ideal(Å)
3	C	240	FMB	N7-N8	-3.50	1.30	1.37
3	B	240	FMB	N7-N8	-3.36	1.31	1.37
3	A	240	FMB	N7-N8	-3.18	1.31	1.37
3	A	240	FMB	C9-C1'	-2.28	1.48	1.51
3	C	240	FMB	C9-C1'	-2.23	1.49	1.51

The worst 5 of 15 bond angle outliers are listed below:

Mol	Chain	Res	Type	Atoms	Z	Observed(°)	Ideal(°)
3	B	240	FMB	N3-C2-N1	-6.77	123.71	128.89
3	C	240	FMB	N3-C2-N1	-6.77	123.71	128.89
3	A	240	FMB	N3-C2-N1	-6.26	124.10	128.89
3	A	240	FMB	C2-N3-C4	-3.39	111.75	114.78
3	B	240	FMB	C2-N3-C4	-3.18	111.94	114.78

There are no chirality outliers.

There are no torsion outliers.

There are no ring outliers.

2 monomers are involved in 4 short contacts:

Mol	Chain	Res	Type	Clashes	Symm-Clashes
3	A	240	FMB	2	0
2	B	239	SO4	2	0

5.7 Other polymers [i](#)

There are no such residues in this entry.

5.8 Polymer linkage issues [i](#)

There are no chain breaks in this entry.

6 Fit of model and data [i](#)

6.1 Protein, DNA and RNA chains [i](#)

EDS was not executed - this section will therefore be empty.

6.2 Non-standard residues in protein, DNA, RNA chains [i](#)

EDS was not executed - this section will therefore be empty.

6.3 Carbohydrates [i](#)

EDS was not executed - this section will therefore be empty.

6.4 Ligands [i](#)

EDS was not executed - this section will therefore be empty.

6.5 Other polymers [i](#)

EDS was not executed - this section will therefore be empty.