



Full wwPDB X-ray Structure Validation Report ⓘ

Feb 1, 2016 – 02:41 PM GMT

PDB ID : 4A6K
Title : Crystal structure of Slm1-PH domain in complex with D-myo-Inositol-4- phosphate
Authors : Anand, K.; Maeda, K.; Gavin, A.C.
Deposited on : 2011-11-04
Resolution : 1.80 Å(reported)

This is a Full wwPDB X-ray Structure Validation Report for a publicly released PDB entry.
We welcome your comments at validation@mail.wwpdb.org
A user guide is available at
<http://wwpdb.org/validation/2016/XrayValidationReportHelp>
with specific help available everywhere you see the ⓘ symbol.

The following versions of software and data (see [references ⓘ](#)) were used in the production of this report:

MolProbity : 4.02b-467
Mogul : 1.7 (RC4), CSD as536be (2015)
Xtriage (Phenix) : 1.9-1692
EDS : rb-20026688
Percentile statistics : 20151230.v01 (using entries in the PDB archive December 30th 2015)
Refmac : 5.8.0135
CCP4 : 6.5.0
Ideal geometry (proteins) : Engh & Huber (2001)
Ideal geometry (DNA, RNA) : Parkinson et al. (1996)
Validation Pipeline (wwPDB-VP) : trunk26865

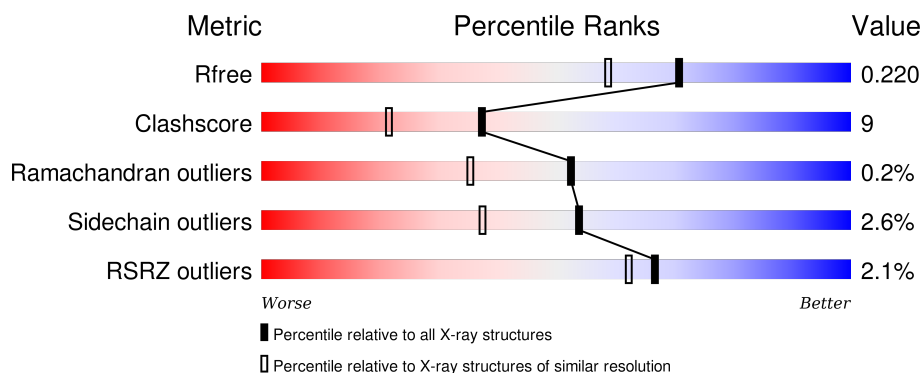
1 Overall quality at a glance

The following experimental techniques were used to determine the structure:

X-RAY DIFFRACTION

The reported resolution of this entry is 1.80 Å.

Percentile scores (ranging between 0-100) for global validation metrics of the entry are shown in the following graphic. The table shows the number of entries on which the scores are based.



Metric	Whole archive (#Entries)	Similar resolution (#Entries, resolution range(Å))
R_{free}	91344	4533 (1.80-1.80)
Clashscore	102246	5383 (1.80-1.80)
Ramachandran outliers	100387	5320 (1.80-1.80)
Sidechain outliers	100360	5319 (1.80-1.80)
RSRZ outliers	91569	4547 (1.80-1.80)

The table below summarises the geometric issues observed across the polymeric chains and their fit to the electron density. The red, orange, yellow and green segments on the lower bar indicate the fraction of residues that contain outliers for ≥ 3 , 2, 1 and 0 types of geometric quality criteria. A grey segment represents the fraction of residues that are not modelled. The numeric value for each fraction is indicated below the corresponding segment, with a dot representing fractions $\leq 5\%$. The upper red bar (where present) indicates the fraction of residues that have poor fit to the electron density. The numeric value is given above the bar.

Mol	Chain	Length	Quality of chain
1	A	120	<div> <div>3%</div> <div> <div></div> <div>69%</div> <div>18%</div> <div>• •</div> <div>8%</div> </div> </div>
1	B	120	<div> <div>2%</div> <div> <div></div> <div>73%</div> <div>14%</div> <div>• •</div> <div>8%</div> </div> </div>
1	C	120	<div> <div>•</div> <div> <div></div> <div>73%</div> <div>17%</div> <div>•</div> <div>9%</div> </div> </div>
1	D	120	<div> <div>2%</div> <div> <div></div> <div>78%</div> <div>10%</div> <div>•</div> <div>11%</div> </div> </div>

The following table lists non-polymeric compounds, carbohydrate monomers and non-standard

residues in protein, DNA, RNA chains that are outliers for geometric or electron-density-fit criteria:

Mol	Type	Chain	Res	Chirality	Geometry	Clashes	Electron density
2	PO4	A	1583	-	-	-	X
2	PO4	D	1584	-	-	-	X
3	I4D	A	1585	-	-	-	X
3	I4D	B	1586	-	-	-	X
3	I4D	C	1583	-	-	X	X

2 Entry composition

There are 4 unique types of molecules in this entry. The entry contains 3943 atoms, of which 0 are hydrogens and 0 are deuteriums.

In the tables below, the ZeroOcc column contains the number of atoms modelled with zero occupancy, the AltConf column contains the number of residues with at least one atom in alternate conformation and the Trace column contains the number of residues modelled with at most 2 atoms.

- Molecule 1 is a protein called PHOSPHATIDYLINOSITOL 4,5-BISPHOSPHATE-BINDING PROTEIN SLM1.

Mol	Chain	Residues	Atoms					ZeroOcc	AltConf	Trace
1	A	110	Total	C	N	O	S	13	0	0
			906	581	158	163	4			
1	B	110	Total	C	N	O	S	5	0	0
			900	577	157	162	4			
1	C	109	Total	C	N	O	S	5	0	0
			879	561	153	161	4			
1	D	107	Total	C	N	O	S	5	0	0
			871	563	147	157	4			

There are 20 discrepancies between the modelled and reference sequences:

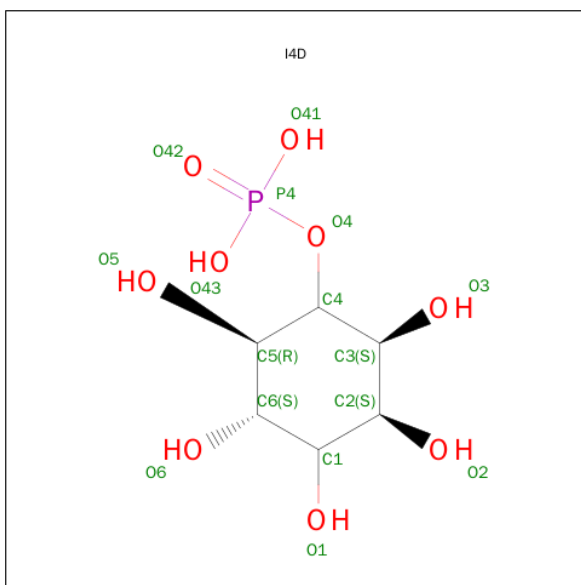
Chain	Residue	Modelled	Actual	Comment	Reference
A	464	ASP	-	EXPRESSION TAG	UNP P40485
A	465	HIS	-	EXPRESSION TAG	UNP P40485
A	466	PRO	-	EXPRESSION TAG	UNP P40485
A	467	PHE	-	EXPRESSION TAG	UNP P40485
A	468	THR	-	EXPRESSION TAG	UNP P40485
B	464	ASP	-	EXPRESSION TAG	UNP P40485
B	465	HIS	-	EXPRESSION TAG	UNP P40485
B	466	PRO	-	EXPRESSION TAG	UNP P40485
B	467	PHE	-	EXPRESSION TAG	UNP P40485
B	468	THR	-	EXPRESSION TAG	UNP P40485
C	464	ASP	-	EXPRESSION TAG	UNP P40485
C	465	HIS	-	EXPRESSION TAG	UNP P40485
C	466	PRO	-	EXPRESSION TAG	UNP P40485
C	467	PHE	-	EXPRESSION TAG	UNP P40485
C	468	THR	-	EXPRESSION TAG	UNP P40485
D	464	ASP	-	EXPRESSION TAG	UNP P40485
D	465	HIS	-	EXPRESSION TAG	UNP P40485
D	466	PRO	-	EXPRESSION TAG	UNP P40485
D	467	PHE	-	EXPRESSION TAG	UNP P40485
D	468	THR	-	EXPRESSION TAG	UNP P40485

- Molecule 2 is PHOSPHATE ION (three-letter code: PO4) (formula: O_4P).



Mol	Chain	Residues	Atoms			ZeroOcc	AltConf
2	A	1	Total	O	P	0	0
			5	4	1		
2	A	1	Total	O	P	0	0
			5	4	1		
2	B	1	Total	O	P	0	0
			5	4	1		
2	B	1	Total	O	P	0	0
			5	4	1		
2	C	1	Total	O	P	0	0
			5	4	1		
2	D	1	Total	O	P	0	0
			5	4	1		
2	D	1	Total	O	P	0	0
			5	4	1		

- Molecule 3 is D-MYO-INOSITOL-4-PHOSPHATE (three-letter code: I4D) (formula: $C_6H_{13}O_9P$).



Mol	Chain	Residues	Atoms				ZeroOcc	AltConf
3	A	1	Total	C	O	P	0	0
			16	6	9	1		
3	B	1	Total	C	O	P	0	0
			16	6	9	1		
3	C	1	Total	C	O	P	0	0
			16	6	9	1		

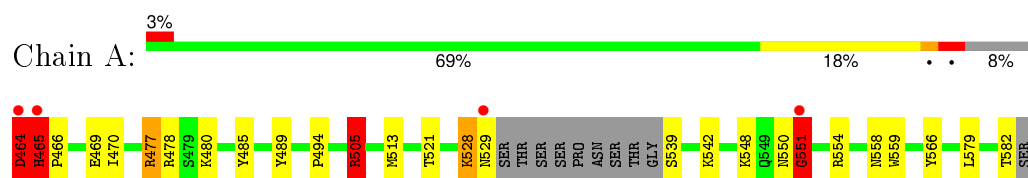
- Molecule 4 is water.

Mol	Chain	Residues	Atoms		ZeroOcc	AltConf
4	A	75	Total	O	0	0
			75	75		
4	B	79	Total	O	0	0
			79	79		
4	C	70	Total	O	0	0
			70	70		
4	D	80	Total	O	0	0
			80	80		

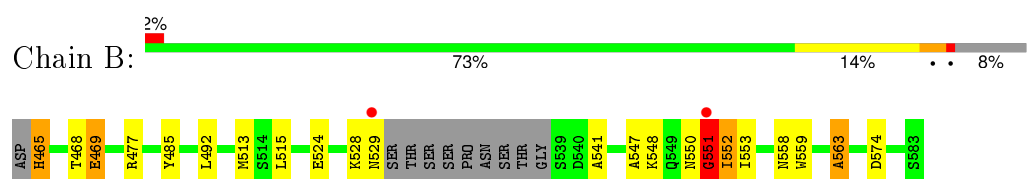
3 Residue-property plots [i](#)

These plots are drawn for all protein, RNA and DNA chains in the entry. The first graphic for a chain summarises the proportions of errors displayed in the second graphic. The second graphic shows the sequence view annotated by issues in geometry and electron density. Residues are color-coded according to the number of geometric quality criteria for which they contain at least one outlier: green = 0, yellow = 1, orange = 2 and red = 3 or more. A red dot above a residue indicates a poor fit to the electron density ($RSRZ > 2$). Stretches of 2 or more consecutive residues without any outlier are shown as a green connector. Residues present in the sample, but not in the model, are shown in grey.

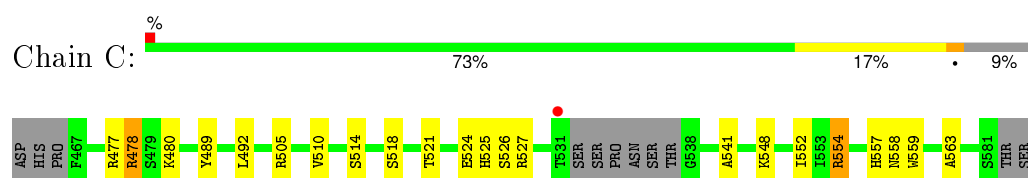
- Molecule 1: PHOSPHATIDYLINOSITOL 4,5-BISPHOSPHATE-BINDING PROTEIN SLM1



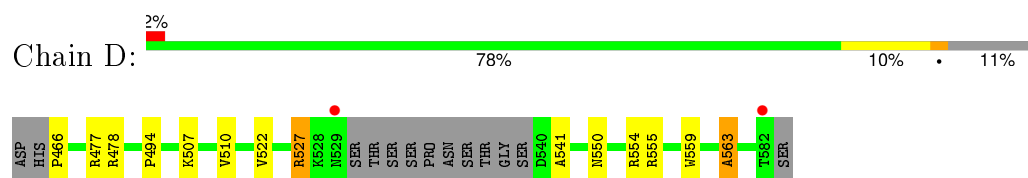
- Molecule 1: PHOSPHATIDYLINOSITOL 4,5-BISPHOSPHATE-BINDING PROTEIN SLM1



- Molecule 1: PHOSPHATIDYLINOSITOL 4,5-BISPHOSPHATE-BINDING PROTEIN SLM1



- Molecule 1: PHOSPHATIDYLINOSITOL 4,5-BISPHOSPHATE-BINDING PROTEIN SLM1



4 Data and refinement statistics

Property	Value	Source
Space group	P 1 21 1	Depositor
Cell constants a, b, c, α , β , γ	36.95Å 71.61Å 82.63Å 90.00° 90.00° 90.00°	Depositor
Resolution (Å)	35.79 – 1.80 35.79 – 1.40	Depositor EDS
% Data completeness (in resolution range)	100.0 (35.79-1.80) 94.8 (35.79-1.40)	Depositor EDS
R_{merge}	0.05	Depositor
R_{sym}	(Not available)	Depositor
$\langle I/\sigma(I) \rangle$ ¹	1.93 (at 1.40Å)	Xtriage
Refinement program	REFMAC 5.5.0109	Depositor
R, R_{free}	0.192 , 0.250 0.207 , 0.220	Depositor DCC
R_{free} test set	775 reflections (2.04%)	DCC
Wilson B-factor (Å ²)	16.5	Xtriage
Anisotropy	0.356	Xtriage
Bulk solvent k_{sol} (e/Å ³), B_{sol} (Å ²)	0.38 , 31.7	EDS
Estimated twinning fraction	0.487 for h,-k,-l	Xtriage
L-test for twinning ²	$\langle L \rangle = 0.48$, $\langle L^2 \rangle = 0.31$	Xtriage
Outliers	0 of 80522 reflections	Xtriage
F_o, F_c correlation	0.96	EDS
Total number of atoms	3943	wwPDB-VP
Average B, all atoms (Å ²)	23.0	wwPDB-VP

Xtriage's analysis on translational NCS is as follows: *The largest off-origin peak in the Patterson function is 7.08% of the height of the origin peak. No significant pseudotranslation is detected.*

¹Intensities estimated from amplitudes.

²Theoretical values of $\langle |L| \rangle$, $\langle L^2 \rangle$ for acentric reflections are 0.5, 0.375 respectively for untwinned datasets, and 0.333, 0.2 for perfectly twinned datasets.

5 Model quality [i](#)

5.1 Standard geometry [i](#)

Bond lengths and bond angles in the following residue types are not validated in this section: I4D, PO4

The Z score for a bond length (or angle) is the number of standard deviations the observed value is removed from the expected value. A bond length (or angle) with $|Z| > 5$ is considered an outlier worth inspection. RMSZ is the root-mean-square of all Z scores of the bond lengths (or angles).

Mol	Chain	Bond lengths		Bond angles	
		RMSZ	$\# Z > 5$	RMSZ	$\# Z > 5$
1	A	1.26	3/928 (0.3%)	1.35	13/1245 (1.0%)
1	B	1.13	1/922 (0.1%)	1.14	7/1238 (0.6%)
1	C	1.15	2/898 (0.2%)	1.01	3/1205 (0.2%)
1	D	1.17	2/892 (0.2%)	0.93	2/1197 (0.2%)
All	All	1.18	8/3640 (0.2%)	1.12	25/4885 (0.5%)

Chiral center outliers are detected by calculating the chiral volume of a chiral center and verifying if the center is modelled as a planar moiety or with the opposite hand. A planarity outlier is detected by checking planarity of atoms in a peptide group, atoms in a mainchain group or atoms of a sidechain that are expected to be planar.

Mol	Chain	#Chirality outliers	#Planarity outliers
1	A	0	3
1	B	0	2
All	All	0	5

All (8) bond length outliers are listed below:

Mol	Chain	Res	Type	Atoms	Z	Observed(Å)	Ideal(Å)
1	A	465	HIS	CB-CG	-10.77	1.30	1.50
1	D	554	ARG	CG-CD	9.53	1.75	1.51
1	C	554	ARG	CG-CD	7.95	1.71	1.51
1	A	464	ASP	CB-CG	-6.72	1.37	1.51
1	B	524	GLU	CB-CG	-6.42	1.40	1.52
1	A	505	ARG	CZ-NH1	6.01	1.40	1.33
1	D	522	VAL	CB-CG1	-5.15	1.42	1.52
1	C	524	GLU	CB-CG	-5.08	1.42	1.52

All (25) bond angle outliers are listed below:

Mol	Chain	Res	Type	Atoms	Z	Observed(°)	Ideal(°)
1	A	505	ARG	NE-CZ-NH1	15.96	128.28	120.30
1	A	505	ARG	NE-CZ-NH2	-12.94	113.83	120.30
1	B	551	GLY	N-CA-C	10.43	139.17	113.10
1	B	563	ALA	CB-CA-C	-10.19	94.82	110.10
1	A	465	HIS	N-CA-C	9.20	135.83	111.00
1	B	552	ILE	CB-CA-C	-9.07	93.46	111.60
1	A	551	GLY	N-CA-C	8.69	134.82	113.10
1	B	550	ASN	CB-CA-C	-7.97	94.46	110.40
1	D	554	ARG	CG-CD-NE	-7.93	95.15	111.80
1	A	554	ARG	CB-CG-CD	7.58	131.32	111.60
1	A	550	ASN	CB-CA-C	-7.49	95.42	110.40
1	A	465	HIS	CB-CA-C	-7.20	96.00	110.40
1	C	554	ARG	CB-CG-CD	6.35	128.10	111.60
1	B	551	GLY	C-N-CA	6.33	137.54	121.70
1	C	478	ARG	NE-CZ-NH2	-6.16	117.22	120.30
1	A	550	ASN	N-CA-C	5.99	127.17	111.00
1	A	477	ARG	NE-CZ-NH1	5.98	123.29	120.30
1	A	464	ASP	CB-CG-OD2	5.96	123.67	118.30
1	B	550	ASN	N-CA-C	5.66	126.27	111.00
1	A	478	ARG	NE-CZ-NH2	-5.64	117.48	120.30
1	D	563	ALA	CB-CA-C	-5.55	101.77	110.10
1	C	492	LEU	CB-CG-CD2	-5.17	102.21	111.00
1	A	464	ASP	N-CA-C	5.11	124.81	111.00
1	A	551	GLY	C-N-CA	5.10	134.45	121.70
1	B	492	LEU	CB-CG-CD2	-5.04	102.42	111.00

There are no chirality outliers.

All (5) planarity outliers are listed below:

Mol	Chain	Res	Type	Group
1	A	464	ASP	Peptide
1	A	465	HIS	Sidechain
1	A	551	GLY	Peptide
1	B	465	HIS	Peptide
1	B	551	GLY	Peptide

5.2 Too-close contacts ⓘ

In the following table, the Non-H and H(model) columns list the number of non-hydrogen atoms and hydrogen atoms in the chain respectively. The H(added) column lists the number of hydrogen atoms added and optimized by MolProbity. The Clashes column lists the number of clashes within the asymmetric unit, whereas Symm-Clashes lists symmetry related clashes.

Mol	Chain	Non-H	H(model)	H(added)	Clashes	Symm-Clashes
1	A	906	0	900	20	0
1	B	900	0	890	17	0
1	C	879	0	865	25	0
1	D	871	0	862	11	1
2	A	10	0	0	1	0
2	B	10	0	0	0	0
2	C	5	0	0	1	0
2	D	10	0	0	0	0
3	A	16	0	11	4	0
3	B	16	0	11	1	0
3	C	16	0	11	10	0
4	A	75	0	0	1	1
4	B	79	0	0	2	1
4	C	70	0	0	2	1
4	D	80	0	0	4	0
All	All	3943	0	3550	66	2

The all-atom clashscore is defined as the number of clashes found per 1000 atoms (including hydrogen atoms). The all-atom clashscore for this structure is 9.

All (66) close contacts within the same asymmetric unit are listed below, sorted by their clash magnitude.

Atom-1	Atom-2	Interatomic distance (Å)	Clash overlap (Å)
1:B:551:GLY:O	1:D:510:VAL:HG21	1.48	1.11
1:B:548:LYS:CB	4:B:2067:HOH:O	2.01	1.08
1:A:528:LYS:O	1:A:529:ASN:HB2	1.53	1.07
1:A:485:TYR:HE2	3:A:1585:I4D:H2	1.13	1.04
1:B:551:GLY:O	1:D:510:VAL:CG2	2.09	0.99
1:A:485:TYR:CE2	3:A:1585:I4D:H2	1.99	0.97
1:B:552:ILE:HG22	1:B:552:ILE:O	1.69	0.90
1:B:541:ALA:HB1	1:B:563:ALA:O	1.74	0.88
1:C:557:HIS:CE1	3:C:1583:I4D:H3	2.08	0.88
1:A:551:GLY:O	1:C:510:VAL:HG21	1.76	0.84
1:A:528:LYS:O	1:A:529:ASN:CB	2.30	0.79
1:C:558:ASN:O	3:C:1583:I4D:O42	2.02	0.76
1:A:582:THR:HG23	4:D:2079:HOH:O	1.85	0.76
1:B:485:TYR:OH	3:B:1586:I4D:O6	2.06	0.73
1:C:557:HIS:ND1	3:C:1583:I4D:H3	2.04	0.73
1:C:480:LYS:HD2	3:C:1583:I4D:O41	1.89	0.73
1:A:485:TYR:HE2	3:A:1585:I4D:C2	1.96	0.72
1:B:541:ALA:CB	1:B:563:ALA:O	2.38	0.71
1:D:507:LYS:HD2	4:D:2036:HOH:O	1.92	0.69

Continued on next page...

Continued from previous page...

Atom-1	Atom-2	Interatomic distance (Å)	Clash overlap (Å)
1:D:541:ALA:HB1	1:D:563:ALA:O	1.93	0.69
1:B:552:ILE:O	1:B:552:ILE:CG2	2.42	0.68
1:B:469:GLU:OE2	4:B:2003:HOH:O	2.12	0.66
1:D:541:ALA:CB	1:D:563:ALA:O	2.47	0.63
1:A:464:ASP:HB3	1:C:518:SER:OG	2.02	0.60
1:C:557:HIS:HD1	3:C:1583:I4D:H3	1.67	0.58
1:A:477:ARG:HD2	1:A:559:TRP:CE3	2.39	0.58
1:A:521:THR:HG23	1:A:548:LYS:HD2	1.85	0.58
1:A:558:ASN:N	2:A:1584:PO4:O4	2.36	0.58
1:B:477:ARG:HD2	1:B:559:TRP:CE3	2.39	0.57
1:A:466:PRO:HB3	1:B:574:ASP:HB3	1.87	0.57
1:B:528:LYS:O	1:B:529:ASN:HB2	2.05	0.57
1:C:525:HIS:HD2	1:C:526:SER:O	1.89	0.56
1:A:505:ARG:HD3	4:A:2011:HOH:O	2.04	0.56
1:C:514:SER:O	1:C:552:ILE:HD11	2.08	0.53
1:A:551:GLY:O	1:C:510:VAL:CG2	2.53	0.53
1:D:478:ARG:NH1	4:D:2015:HOH:O	2.42	0.53
1:D:477:ARG:HD2	1:D:559:TRP:CE3	2.45	0.52
1:D:550:ASN:ND2	1:D:555:ARG:H	2.09	0.51
4:C:2001:HOH:O	1:D:466:PRO:HA	2.11	0.50
1:C:480:LYS:HE3	3:C:1583:I4D:O2	2.11	0.50
1:B:558:ASN:O	1:B:559:TRP:HD1	1.94	0.50
1:C:557:HIS:HD1	3:C:1583:I4D:C4	2.24	0.49
1:D:478:ARG:HD2	4:D:2016:HOH:O	2.12	0.49
1:C:480:LYS:HE2	3:C:1583:I4D:H4	1.95	0.48
1:C:477:ARG:HD2	1:C:559:TRP:CE3	2.48	0.48
1:A:528:LYS:HG2	1:A:566:TYR:CG	2.50	0.47
1:C:557:HIS:HD1	3:C:1583:I4D:C3	2.27	0.47
1:C:478:ARG:NE	4:C:2015:HOH:O	2.47	0.47
1:A:542:LYS:NZ	3:A:1585:I4D:HA	2.31	0.47
1:C:557:HIS:HE1	3:C:1583:I4D:H3	1.75	0.46
1:A:470:ILE:HD13	1:A:579:LEU:HD11	1.96	0.46
1:C:541:ALA:CB	1:C:563:ALA:O	2.64	0.46
1:C:505:ARG:NE	1:C:505:ARG:HA	2.32	0.45
1:C:514:SER:O	1:C:552:ILE:CD1	2.64	0.45
1:A:489:TYR:CE2	1:A:505:ARG:HD2	2.51	0.44
1:A:470:ILE:HD11	1:A:494:PRO:HG3	1.99	0.44
1:B:513:MET:CE	1:B:515:LEU:HD11	2.48	0.44
1:B:547:ALA:HB2	1:B:553:ILE:HB	1.99	0.43
1:B:513:MET:HE1	1:B:515:LEU:HD11	1.99	0.43
1:C:489:TYR:CD2	1:C:505:ARG:NH1	2.87	0.43

Continued on next page...

Continued from previous page...

Atom-1	Atom-2	Interatomic distance (Å)	Clash overlap (Å)
1:C:527:ARG:NE	2:C:1582:PO4:O1	2.53	0.41
1:C:477:ARG:HD3	1:C:477:ARG:HH11	1.74	0.41
1:C:541:ALA:HB1	1:C:563:ALA:O	2.20	0.41
1:B:468:THR:HG23	1:D:494:PRO:HB2	2.02	0.41
1:A:513:MET:SD	1:A:559:TRP:HZ3	2.44	0.40
1:C:521:THR:CG2	1:C:548:LYS:HD3	2.51	0.40

All (2) symmetry-related close contacts are listed below. The label for Atom-2 includes the symmetry operator and encoded unit-cell translations to be applied.

Atom-1	Atom-2	Interatomic distance (Å)	Clash overlap (Å)
4:A:2031:HOH:O	4:C:2033:HOH:O[1_655]	0.70	1.50
1:D:527:ARG:NH2	4:B:2023:HOH:O[2_546]	2.01	0.19

5.3 Torsion angles ⓘ

5.3.1 Protein backbone ⓘ

In the following table, the Percentiles column shows the percent Ramachandran outliers of the chain as a percentile score with respect to all X-ray entries followed by that with respect to entries of similar resolution.

The Analysed column shows the number of residues for which the backbone conformation was analysed, and the total number of residues.

Mol	Chain	Analysed	Favoured	Allowed	Outliers	Percentiles	
1	A	106/120 (88%)	99 (93%)	7 (7%)	0	100	100
1	B	106/120 (88%)	103 (97%)	2 (2%)	1 (1%)	21	7
1	C	105/120 (88%)	102 (97%)	3 (3%)	0	100	100
1	D	103/120 (86%)	101 (98%)	2 (2%)	0	100	100
All	All	420/480 (88%)	405 (96%)	14 (3%)	1 (0%)	52	35

All (1) Ramachandran outliers are listed below:

Mol	Chain	Res	Type
1	B	551	GLY

5.3.2 Protein sidechains ⓘ

In the following table, the Percentiles column shows the percent sidechain outliers of the chain as a percentile score with respect to all X-ray entries followed by that with respect to entries of similar resolution.

The Analysed column shows the number of residues for which the sidechain conformation was analysed, and the total number of residues.

Mol	Chain	Analysed	Rotameric	Outliers	Percentiles	
1	A	101/110 (92%)	95 (94%)	6 (6%)	24	9
1	B	100/110 (91%)	98 (98%)	2 (2%)	63	49
1	C	96/110 (87%)	95 (99%)	1 (1%)	82	77
1	D	95/110 (86%)	94 (99%)	1 (1%)	80	74
All	All	392/440 (89%)	382 (97%)	10 (3%)	54	37

All (10) residues with a non-rotameric sidechain are listed below:

Mol	Chain	Res	Type
1	A	465	HIS
1	A	469	GLU
1	A	480	LYS
1	A	505	ARG
1	A	528	LYS
1	A	539	SER
1	B	465	HIS
1	B	469	GLU
1	C	554	ARG
1	D	527	ARG

Some sidechains can be flipped to improve hydrogen bonding and reduce clashes. All (3) such sidechains are listed below:

Mol	Chain	Res	Type
1	B	549	GLN
1	C	525	HIS
1	D	550	ASN

5.3.3 RNA ⓘ

There are no RNA molecules in this entry.

5.4 Non-standard residues in protein, DNA, RNA chains ⓘ

There are no non-standard protein/DNA/RNA residues in this entry.

5.5 Carbohydrates ⓘ

There are no carbohydrates in this entry.

5.6 Ligand geometry ⓘ

10 ligands are modelled in this entry.

In the following table, the Counts columns list the number of bonds (or angles) for which Mogul statistics could be retrieved, the number of bonds (or angles) that are observed in the model and the number of bonds (or angles) that are defined in the chemical component dictionary. The Link column lists molecule types, if any, to which the group is linked. The Z score for a bond length (or angle) is the number of standard deviations the observed value is removed from the expected value. A bond length (or angle) with $|Z| > 2$ is considered an outlier worth inspection. RMSZ is the root-mean-square of all Z scores of the bond lengths (or angles).

Mol	Type	Chain	Res	Link	Bond lengths			Bond angles		
					Counts	RMSZ	$\# Z > 2$	Counts	RMSZ	$\# Z > 2$
2	PO4	A	1583	-	4,4,4	1.70	2 (50%)	6,6,6	0.29	0
2	PO4	A	1584	-	4,4,4	0.80	0	6,6,6	0.30	0
3	I4D	A	1585	-	16,16,16	0.78	1 (6%)	23,25,25	1.79	6 (26%)
2	PO4	B	1584	-	4,4,4	1.59	1 (25%)	6,6,6	0.45	0
2	PO4	B	1585	-	4,4,4	0.73	0	6,6,6	0.28	0
3	I4D	B	1586	-	16,16,16	0.87	1 (6%)	23,25,25	1.85	7 (30%)
2	PO4	C	1582	-	4,4,4	0.43	0	6,6,6	0.27	0
3	I4D	C	1583	-	16,16,16	1.09	1 (6%)	23,25,25	2.27	9 (39%)
2	PO4	D	1583	-	4,4,4	0.71	0	6,6,6	0.28	0
2	PO4	D	1584	-	4,4,4	0.44	0	6,6,6	0.29	0

In the following table, the Chirals column lists the number of chiral outliers, the number of chiral centers analysed, the number of these observed in the model and the number defined in the chemical component dictionary. Similar counts are reported in the Torsion and Rings columns. '-' means no outliers of that kind were identified.

Mol	Type	Chain	Res	Link	Chirals	Torsions	Rings
2	PO4	A	1583	-	-	0/0/0/0	0/0/0/0
2	PO4	A	1584	-	-	0/0/0/0	0/0/0/0
3	I4D	A	1585	-	-	0/5/29/29	0/1/1/1
2	PO4	B	1584	-	-	0/0/0/0	0/0/0/0

Continued on next page...

Continued from previous page...

Mol	Type	Chain	Res	Link	Chirals	Torsions	Rings
2	PO4	B	1585	-	-	0/0/0/0	0/0/0/0
3	I4D	B	1586	-	-	0/5/29/29	0/1/1/1
2	PO4	C	1582	-	-	0/0/0/0	0/0/0/0
3	I4D	C	1583	-	-	0/5/29/29	0/1/1/1
2	PO4	D	1583	-	-	0/0/0/0	0/0/0/0
2	PO4	D	1584	-	-	0/0/0/0	0/0/0/0

All (6) bond length outliers are listed below:

Mol	Chain	Res	Type	Atoms	Z	Observed(Å)	Ideal(Å)
2	B	1584	PO4	P-O4	-2.53	1.44	1.53
2	A	1583	PO4	P-O1	-2.50	1.41	1.52
2	A	1583	PO4	P-O3	-2.05	1.46	1.53
3	B	1586	I4D	P4-O4	2.08	1.66	1.60
3	C	1583	I4D	P4-O4	2.15	1.66	1.60
3	A	1585	I4D	P4-O4	2.34	1.67	1.60

All (22) bond angle outliers are listed below:

Mol	Chain	Res	Type	Atoms	Z	Observed(°)	Ideal(°)
3	C	1583	I4D	O5-C5-C4	-6.31	94.94	109.87
3	A	1585	I4D	O3-C3-C2	-3.51	102.44	110.34
3	B	1586	I4D	O1-C1-C6	-3.39	102.70	110.34
3	B	1586	I4D	O1-C1-C2	-3.30	102.91	110.34
3	A	1585	I4D	O4-P4-O42	-2.44	101.02	107.11
3	C	1583	I4D	O4-P4-O42	-2.20	101.62	107.11
3	A	1585	I4D	O43-P4-O42	2.01	117.04	110.58
3	C	1583	I4D	C1-C6-C5	2.12	114.75	110.79
3	B	1586	I4D	C1-C6-C5	2.20	114.90	110.79
3	C	1583	I4D	C3-C4-C5	2.36	113.99	110.89
3	C	1583	I4D	C2-C1-C6	2.45	115.37	110.79
3	A	1585	I4D	C2-C3-C4	2.48	115.05	109.60
3	B	1586	I4D	O4-C4-C3	2.49	113.83	108.38
3	A	1585	I4D	O4-C4-C3	2.58	114.03	108.38
3	B	1586	I4D	C3-C4-C5	2.64	114.36	110.89
3	C	1583	I4D	O4-C4-C3	2.70	114.28	108.38
3	C	1583	I4D	C2-C3-C4	3.10	116.42	109.60
3	B	1586	I4D	C1-C2-C3	3.23	116.82	110.79
3	C	1583	I4D	C1-C2-C3	3.28	116.92	110.79
3	A	1585	I4D	C1-C2-C3	3.30	116.95	110.79
3	B	1586	I4D	C2-C3-C4	3.71	117.75	109.60
3	C	1583	I4D	P4-O4-C4	4.18	131.60	121.56

There are no chirality outliers.

There are no torsion outliers.

There are no ring outliers.

5 monomers are involved in 17 short contacts:

Mol	Chain	Res	Type	Clashes	Symm-Clashes
2	A	1584	PO4	1	0
3	A	1585	I4D	4	0
3	B	1586	I4D	1	0
2	C	1582	PO4	1	0
3	C	1583	I4D	10	0

5.7 Other polymers [i](#)

There are no such residues in this entry.

5.8 Polymer linkage issues [i](#)

There are no chain breaks in this entry.

6 Fit of model and data ⓘ

6.1 Protein, DNA and RNA chains ⓘ

In the following table, the column labelled ‘#RSRZ> 2’ contains the number (and percentage) of RSRZ outliers, followed by percent RSRZ outliers for the chain as percentile scores relative to all X-ray entries and entries of similar resolution. The OWAB column contains the minimum, median, 95th percentile and maximum values of the occupancy-weighted average B-factor per residue. The column labelled ‘Q< 0.9’ lists the number of (and percentage) of residues with an average occupancy less than 0.9.

Mol	Chain	Analysed	<RSRZ>	#RSRZ>2	OWAB(Å ²)	Q<0.9
1	A	110/120 (91%)	-0.29	4 (3%) 46 40	11, 20, 36, 42	3 (2%)
1	B	110/120 (91%)	-0.36	2 (1%) 71 67	12, 20, 34, 40	1 (0%)
1	C	109/120 (90%)	-0.43	1 (0%) 85 83	11, 20, 37, 53	1 (0%)
1	D	107/120 (89%)	-0.39	2 (1%) 70 66	12, 20, 37, 44	1 (0%)
All	All	436/480 (90%)	-0.37	9 (2%) 67 62	11, 20, 36, 53	6 (1%)

All (9) RSRZ outliers are listed below:

Mol	Chain	Res	Type	RSRZ
1	B	551	GLY	4.3
1	A	551	GLY	3.4
1	D	529	ASN	2.7
1	A	464	ASP	2.7
1	C	531	THR	2.6
1	D	582	THR	2.4
1	B	529	ASN	2.4
1	A	465	HIS	2.2
1	A	529	ASN	2.2

6.2 Non-standard residues in protein, DNA, RNA chains ⓘ

There are no non-standard protein/DNA/RNA residues in this entry.

6.3 Carbohydrates ⓘ

There are no carbohydrates in this entry.

6.4 Ligands ⓘ

In the following table, the Atoms column lists the number of modelled atoms in the group and the number defined in the chemical component dictionary. LLDF column lists the quality of electron density of the group with respect to its neighbouring residues in protein, DNA or RNA chains. The B-factors column lists the minimum, median, 95th percentile and maximum values of B factors of atoms in the group. The column labelled 'Q< 0.9' lists the number of atoms with occupancy less than 0.9.

Mol	Type	Chain	Res	Atoms	RSCC	RSR	LLDF	B-factors(Å ²)	Q<0.9
3	I4D	B	1586	16/16	0.65	0.25	9.65	45,48,52,55	0
3	I4D	A	1585	16/16	0.63	0.25	6.99	50,54,56,58	0
3	I4D	C	1583	16/16	0.74	0.32	5.61	45,53,57,61	0
2	PO4	A	1583	5/5	0.92	0.13	3.41	22,23,32,32	0
2	PO4	D	1584	5/5	0.82	0.12	2.80	53,56,57,57	0
2	PO4	C	1582	5/5	0.93	0.13	1.32	50,51,55,55	0
2	PO4	B	1584	5/5	0.96	0.11	0.93	21,23,30,31	0
2	PO4	A	1584	5/5	0.96	0.12	-	50,51,52,52	0
2	PO4	B	1585	5/5	0.98	0.08	-	47,48,51,52	0
2	PO4	D	1583	5/5	0.98	0.12	-	43,44,47,49	0

6.5 Other polymers ⓘ

There are no such residues in this entry.