



Full wwPDB X-ray Structure Validation Report ⓘ

Feb 19, 2016 – 09:31 PM GMT

PDB ID : 5A71
Title : Open and closed conformations and protonation states of Candida antarctica
Lipase B: atomic resolution native
Authors : Stauch, B.; Fisher, S.J.; Ciani, M.
Deposited on : 2015-07-02
Resolution : 0.91 Å(reported)

This is a Full wwPDB X-ray Structure Validation Report for a publicly released PDB entry.
We welcome your comments at validation@mail.wwpdb.org
A user guide is available at
<http://wwpdb.org/validation/2016/XrayValidationReportHelp>
with specific help available everywhere you see the ⓘ symbol.

The following versions of software and data (see [references ⓘ](#)) were used in the production of this report:

MolProbity : 4.02b-467
Mogul : 1.7.1 (RC1), CSD as537be (2016)
Xtriage (Phenix) : 1.9-1692
EDS : rb-20026982
Percentile statistics : 20151230.v01 (using entries in the PDB archive December 30th 2015)
Refmac : 5.8.0135
CCP4 : 6.5.0
Ideal geometry (proteins) : Engh & Huber (2001)
Ideal geometry (DNA, RNA) : Parkinson et al. (1996)
Validation Pipeline (wwPDB-VP) : rb-20026982

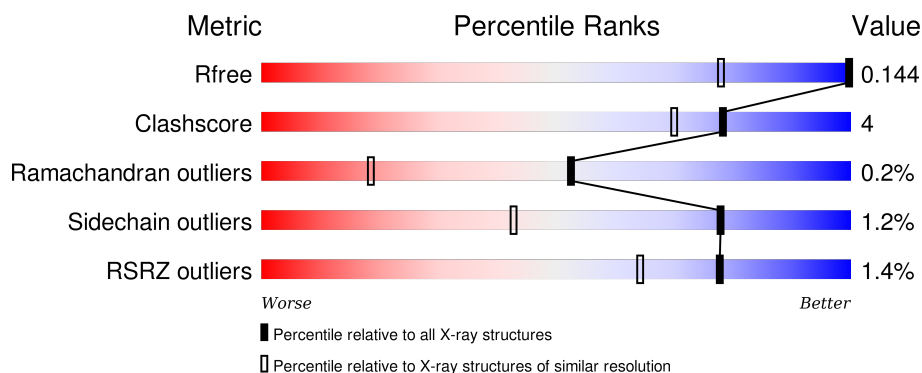
1 Overall quality at a glance

The following experimental techniques were used to determine the structure:

X-RAY DIFFRACTION

The reported resolution of this entry is 0.91 Å.

Percentile scores (ranging between 0-100) for global validation metrics of the entry are shown in the following graphic. The table shows the number of entries on which the scores are based.



Metric	Whole archive (#Entries)	Similar resolution (#Entries, resolution range(Å))
R_{free}	91344	1354 (1.10-0.74)
Clashscore	102246	1078 (1.08-0.76)
Ramachandran outliers	100387	1005 (1.08-0.76)
Sidechain outliers	100360	1007 (1.08-0.76)
RSRZ outliers	91569	1359 (1.10-0.74)

The table below summarises the geometric issues observed across the polymeric chains and their fit to the electron density. The red, orange, yellow and green segments on the lower bar indicate the fraction of residues that contain outliers for ≥ 3 , 2, 1 and 0 types of geometric quality criteria. A grey segment represents the fraction of residues that are not modelled. The numeric value for each fraction is indicated below the corresponding segment, with a dot representing fractions $\leq 5\%$. The upper red bar (where present) indicates the fraction of residues that have poor fit to the electron density. The numeric value is given above the bar.

Mol	Chain	Length	Quality of chain
1	A	317	<div> <div style="width: 100%; height: 10px; background: linear-gradient(to right, red 1%, orange 1%, yellow 1%, green 98%);"></div> <div style="display: flex; justify-content: space-between; width: 100%;"> % 89% 9% • </div> </div>
1	B	317	<div> <div style="width: 100%; height: 10px; background: linear-gradient(to right, red 2%, orange 1%, yellow 1%, green 96%);"></div> <div style="display: flex; justify-content: space-between; width: 100%;"> 2% 88% 11% • </div> </div>

The following table lists non-polymeric compounds, carbohydrate monomers and non-standard residues in protein, DNA, RNA chains that are outliers for geometric or electron-density-fit criteria:

Mol	Type	Chain	Res	Chirality	Geometry	Clashes	Electron density
2	NAG	A	1317[A]	-	-	-	X
2	NAG	A	1317[B]	-	-	-	X
2	NAG	B	1317	-	-	-	X
3	IPA	A	1319	-	-	-	X
3	IPA	B	1319	-	-	X	X
3	IPA	B	1320	-	-	-	X
4	K	A	1322	-	-	-	X
5	NA	A	1323	-	-	-	X
5	NA	B	1324	-	-	-	X

2 Entry composition [i](#)

There are 6 unique types of molecules in this entry. The entry contains 5948 atoms, of which 0 are hydrogens and 0 are deuteriums.

In the tables below, the ZeroOcc column contains the number of atoms modelled with zero occupancy, the AltConf column contains the number of residues with at least one atom in alternate conformation and the Trace column contains the number of residues modelled with at most 2 atoms.

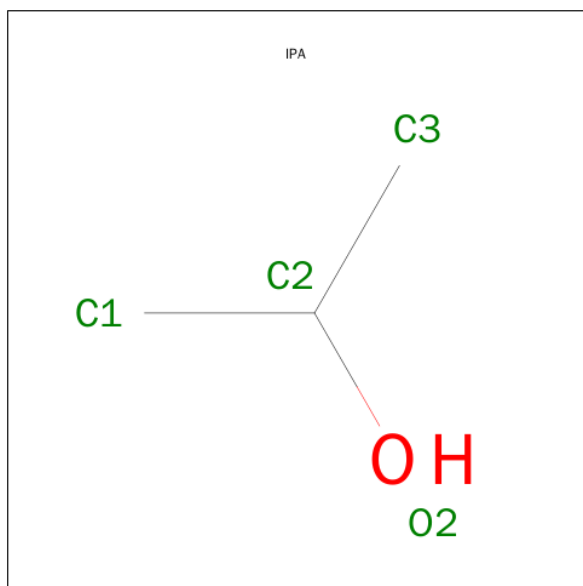
- Molecule 1 is a protein called LIPASE B.

Mol	Chain	Residues	Atoms					ZeroOcc	AltConf	Trace
1	A	316	Total	C	N	O	S	0	18	0
			2417	1535	402	469	11			
1	B	316	Total	C	N	O	S	0	16	0
			2407	1530	401	463	13			

- Molecule 2 is a polymer of unknown type called SUGAR (2-MER).

Mol	Chain	Residues	Atoms				ZeroOcc	AltConf
2	A	2	Total	C	N	O	0	2
			56	32	4	20		
2	B	2	Total	C	N	O	0	0
			28	16	2	10		

- Molecule 3 is ISOPROPYL ALCOHOL (three-letter code: IPA) (formula: C_3H_8O).



Mol	Chain	Residues	Atoms	ZeroOcc	AltConf
3	A	1	Total C O 4 3 1	0	0
3	B	1	Total C O 4 3 1	0	0
3	B	1	Total C O 4 3 1	0	0

- Molecule 4 is POTASSIUM ION (three-letter code: K) (formula: K).

Mol	Chain	Residues	Atoms	ZeroOcc	AltConf
4	B	1	Total K 1 1	0	0
4	A	3	Total K 3 3	0	0

- Molecule 5 is SODIUM ION (three-letter code: NA) (formula: Na).

Mol	Chain	Residues	Atoms	ZeroOcc	AltConf
5	B	4	Total Na 4 4	0	0
5	A	1	Total Na 1 1	0	0

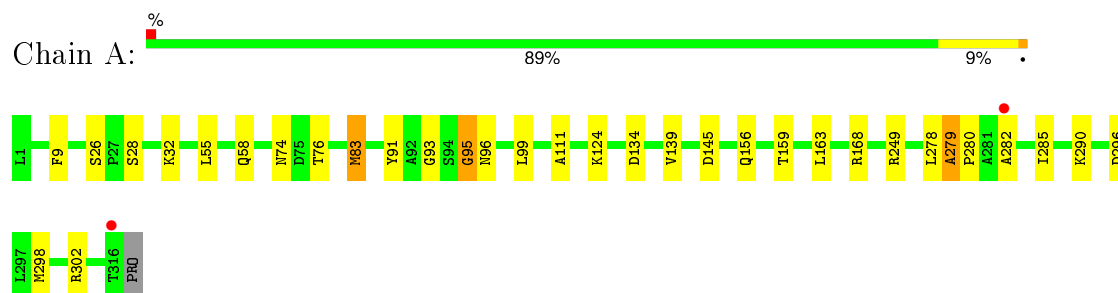
- Molecule 6 is water.

Mol	Chain	Residues	Atoms	ZeroOcc	AltConf
6	A	533	Total O 533 533	0	0
6	B	486	Total O 486 486	0	0

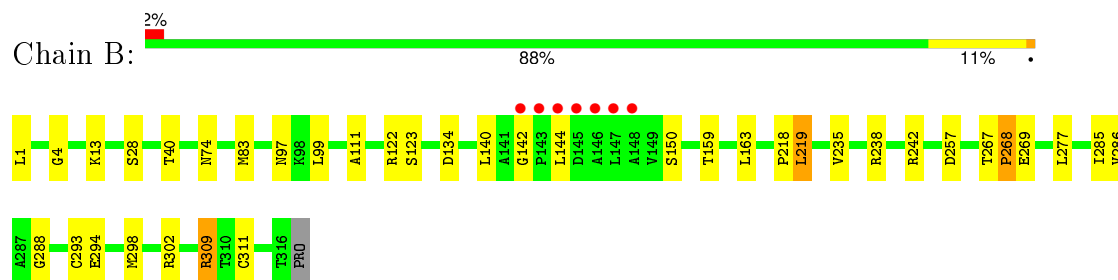
3 Residue-property plots [i](#)

These plots are drawn for all protein, RNA and DNA chains in the entry. The first graphic for a chain summarises the proportions of errors displayed in the second graphic. The second graphic shows the sequence view annotated by issues in geometry and electron density. Residues are color-coded according to the number of geometric quality criteria for which they contain at least one outlier: green = 0, yellow = 1, orange = 2 and red = 3 or more. A red dot above a residue indicates a poor fit to the electron density ($\text{RSRZ} > 2$). Stretches of 2 or more consecutive residues without any outlier are shown as a green connector. Residues present in the sample, but not in the model, are shown in grey.

• Molecule 1: LIPASE B



• Molecule 1: LIPASE B



4 Data and refinement statistics

Property	Value	Source
Space group	P 1	Depositor
Cell constants a, b, c, α , β , γ	39.67Å 48.94Å 71.61Å 88.74° 97.15° 108.44°	Depositor
Resolution (Å)	71.04 – 0.91 71.04 – 0.91	Depositor EDS
% Data completeness (in resolution range)	94.5 (71.04-0.91) 94.0 (71.04-0.91)	Depositor EDS
R_{merge}	0.11	Depositor
R_{sym}	(Not available)	Depositor
$\langle I/\sigma(I) \rangle$ ¹	1.88 (at 0.91Å)	Xtriage
Refinement program	REFMAC 5.8.0123	Depositor
R, R_{free}	0.112 , 0.132 0.126 , 0.144	Depositor DCC
R_{free} test set	17383 reflections (5.33%)	DCC
Wilson B-factor (Å ²)	7.7	Xtriage
Anisotropy	0.379	Xtriage
Bulk solvent k_{sol} (e/Å ³), B_{sol} (Å ²)	0.32 , 43.8	EDS
Estimated twinning fraction	No twinning to report.	Xtriage
L-test for twinning ²	$\langle L \rangle = 0.47$, $\langle L^2 \rangle = 0.30$	Xtriage
Outliers	0 of 343684 reflections	Xtriage
F_o, F_c correlation	0.98	EDS
Total number of atoms	5948	wwPDB-VP
Average B, all atoms (Å ²)	13.0	wwPDB-VP

Xtriage's analysis on translational NCS is as follows: *The largest off-origin peak in the Patterson function is 7.42% of the height of the origin peak. No significant pseudotranslation is detected.*

¹Intensities estimated from amplitudes.

²Theoretical values of $\langle |L| \rangle$, $\langle L^2 \rangle$ for acentric reflections are 0.5, 0.375 respectively for untwinned datasets, and 0.333, 0.2 for perfectly twinned datasets.

5 Model quality [i](#)

5.1 Standard geometry [i](#)

Bond lengths and bond angles in the following residue types are not validated in this section: NA, K, IPA, NAG

The Z score for a bond length (or angle) is the number of standard deviations the observed value is removed from the expected value. A bond length (or angle) with $|Z| > 5$ is considered an outlier worth inspection. RMSZ is the root-mean-square of all Z scores of the bond lengths (or angles).

Mol	Chain	Bond lengths		Bond angles	
		RMSZ	$\# Z > 5$	RMSZ	$\# Z > 5$
1	A	1.18	8/2491 (0.3%)	1.15	18/3424 (0.5%)
1	B	1.29	22/2496 (0.9%)	1.13	14/3422 (0.4%)
All	All	1.24	30/4987 (0.6%)	1.14	32/6846 (0.5%)

Chiral center outliers are detected by calculating the chiral volume of a chiral center and verifying if the center is modelled as a planar moiety or with the opposite hand. A planarity outlier is detected by checking planarity of atoms in a peptide group, atoms in a mainchain group or atoms of a sidechain that are expected to be planar.

Mol	Chain	#Chirality outliers	#Planarity outliers
1	A	0	1

All (30) bond length outliers are listed below:

Mol	Chain	Res	Type	Atoms	Z	Observed(Å)	Ideal(Å)
1	B	242[A]	ARG	CZ-NH2	-9.88	1.20	1.33
1	B	242[B]	ARG	CZ-NH2	-9.88	1.20	1.33
1	B	269	GLU	CD-OE2	8.47	1.34	1.25
1	B	242[A]	ARG	CZ-NH1	-8.19	1.22	1.33
1	B	242[B]	ARG	CZ-NH1	-8.19	1.22	1.33
1	B	238	ARG	CZ-NH2	-7.66	1.23	1.33
1	A	95	GLY	N-CA	7.60	1.57	1.46
1	B	28	SER	CA-CB	7.32	1.64	1.52
1	B	123	SER	CB-OG	7.32	1.51	1.42
1	B	269	GLU	CD-OE1	7.05	1.33	1.25
1	B	4	GLY	N-CA	6.87	1.56	1.46
1	B	269	GLU	CG-CD	6.81	1.62	1.51
1	B	123	SER	CA-CB	6.78	1.63	1.52
1	B	309	ARG	CZ-NH2	6.77	1.41	1.33
1	A	124	LYS	CE-NZ	-6.51	1.32	1.49
1	B	294	GLU	CD-OE1	-6.37	1.18	1.25

Continued on next page...

Continued from previous page...

Mol	Chain	Res	Type	Atoms	Z	Observed(Å)	Ideal(Å)
1	B	277	LEU	CB-CG	-6.31	1.34	1.52
1	A	32	LYS	CD-CE	6.29	1.67	1.51
1	A	96	ASN	CA-C	-6.24	1.36	1.52
1	B	150	SER	CB-OG	-6.22	1.34	1.42
1	B	288	GLY	N-CA	-5.99	1.37	1.46
1	B	294	GLU	CD-OE2	5.96	1.32	1.25
1	A	95	GLY	CA-C	-5.58	1.43	1.51
1	A	26	SER	CB-OG	-5.32	1.35	1.42
1	A	91	TYR	CE2-CZ	-5.22	1.31	1.38
1	B	293	CYS	CB-SG	-5.22	1.73	1.81
1	A	93	GLY	C-O	5.13	1.31	1.23
1	B	122	ARG	CZ-NH2	-5.12	1.26	1.33
1	B	142	GLY	N-CA	5.05	1.53	1.46
1	B	311	CYS	CB-SG	5.01	1.90	1.82

All (32) bond angle outliers are listed below:

Mol	Chain	Res	Type	Atoms	Z	Observed(°)	Ideal(°)
1	A	249	ARG	NE-CZ-NH2	-11.97	114.31	120.30
1	B	242[A]	ARG	NE-CZ-NH2	11.63	126.12	120.30
1	B	242[B]	ARG	NE-CZ-NH2	11.63	126.12	120.30
1	A	83	MET	CG-SD-CE	-9.95	84.29	100.20
1	A	145	ASP	CB-CG-OD2	-9.72	109.56	118.30
1	A	249	ARG	NE-CZ-NH1	9.17	124.88	120.30
1	B	1	LEU	CA-CB-CG	8.33	134.47	115.30
1	B	134	ASP	CB-CG-OD2	-8.29	110.83	118.30
1	B	302	ARG	NE-CZ-NH2	-7.85	116.37	120.30
1	B	134	ASP	CB-CG-OD1	7.65	125.19	118.30
1	A	145	ASP	CB-CG-OD1	7.57	125.11	118.30
1	A	168	ARG	NE-CZ-NH1	7.47	124.03	120.30
1	A	168	ARG	NE-CZ-NH2	-7.43	116.59	120.30
1	B	242[A]	ARG	NH1-CZ-NH2	-7.24	111.44	119.40
1	B	242[B]	ARG	NH1-CZ-NH2	-7.24	111.44	119.40
1	A	302	ARG	NE-CZ-NH2	-7.17	116.71	120.30
1	A	134	ASP	CB-CG-OD1	6.75	124.37	118.30
1	B	238	ARG	NE-CZ-NH2	6.68	123.64	120.30
1	A	134	ASP	CB-CG-OD2	-6.65	112.32	118.30
1	A	139[A]	VAL	CA-CB-CG2	6.61	120.82	110.90
1	A	139[B]	VAL	CA-CB-CG2	6.61	120.82	110.90
1	A	278[A]	LEU	CB-CG-CD1	-6.59	99.80	111.00
1	A	278[B]	LEU	CB-CG-CD1	-6.59	99.80	111.00
1	B	277	LEU	CB-CG-CD1	-6.46	100.02	111.00

Continued on next page...

Continued from previous page...

Mol	Chain	Res	Type	Atoms	Z	Observed(°)	Ideal(°)
1	A	296	ASP	CB-CG-OD2	-5.60	113.26	118.30
1	A	278[A]	LEU	CA-CB-CG	-5.24	103.24	115.30
1	A	278[B]	LEU	CA-CB-CG	-5.24	103.24	115.30
1	B	140	LEU	CB-CG-CD2	5.22	119.87	111.00
1	B	238	ARG	CD-NE-CZ	5.20	130.88	123.60
1	B	298[A]	MET	CG-SD-CE	5.18	108.48	100.20
1	B	298[B]	MET	CG-SD-CE	5.18	108.48	100.20
1	A	9	PHE	CB-CG-CD1	5.03	124.32	120.80

There are no chirality outliers.

All (1) planarity outliers are listed below:

Mol	Chain	Res	Type	Group
1	A	285	ILE	Mainchain

5.2 Too-close contacts ⓘ

In the following table, the Non-H and H(model) columns list the number of non-hydrogen atoms and hydrogen atoms in the chain respectively. The H(added) column lists the number of hydrogen atoms added and optimized by MolProbity. The Clashes column lists the number of clashes within the asymmetric unit, whereas Symm-Clashes lists symmetry related clashes.

Mol	Chain	Non-H	H(model)	H(added)	Clashes	Symm-Clashes
1	A	2417	0	2411	11	0
1	B	2407	0	2421	21	1
2	A	56	0	50	2	0
2	B	28	0	24	1	0
3	A	4	0	8	0	0
3	B	8	0	16	4	0
4	A	3	0	0	0	0
4	B	1	0	0	0	0
5	A	1	0	0	0	0
5	B	4	0	0	0	0
6	A	533	0	0	8	5
6	B	486	0	0	9	3
All	All	5948	0	4930	35	7

The all-atom clashscore is defined as the number of clashes found per 1000 atoms (including hydrogen atoms). The all-atom clashscore for this structure is 4.

All (35) close contacts within the same asymmetric unit are listed below, sorted by their clash magnitude.

Atom-1	Atom-2	Interatomic distance (Å)	Clash overlap (Å)
1:B:309:ARG:NH2	6:B:2465:HOH:O	1.87	1.05
1:B:144[B]:LEU:HD11	1:B:285:ILE:HB	1.63	0.81
1:A:290:LYS:HE3	6:A:2328:HOH:O	1.82	0.80
1:B:97[B]:ASN:OD1	6:B:2212:HOH:O	2.03	0.75
1:B:144[B]:LEU:HD21	1:B:285:ILE:HG22	1.74	0.70
1:A:95:GLY:O	6:A:2243:HOH:O	2.10	0.69
1:B:144[B]:LEU:HD21	1:B:285:ILE:CG2	2.24	0.68
1:B:144[A]:LEU:HD11	6:B:2479:HOH:O	1.96	0.65
1:B:218:PRO:O	6:B:2344:HOH:O	2.13	0.65
1:A:74[B]:ASN:OD1	6:A:2189:HOH:O	2.14	0.65
2:A:1318[B]:NAG:C6	6:A:2530:HOH:O	2.47	0.61
1:B:83[A]:MET:SD	1:B:111:ALA:HA	2.43	0.58
3:B:1319:IPA:H31	6:B:2111:HOH:O	2.03	0.58
1:A:279[A]:ALA:HB3	1:A:280[A]:PRO:HD3	1.85	0.57
2:A:1318[B]:NAG:H62	6:A:2530:HOH:O	2.06	0.55
1:B:144[B]:LEU:HG	1:B:286:VAL:HG23	1.88	0.54
1:B:13[B]:LYS:NZ	6:B:2044:HOH:O	2.22	0.54
1:B:144[B]:LEU:HG	1:B:286:VAL:CG2	2.37	0.54
1:B:40:THR:O	3:B:1319:IPA:H33	2.07	0.54
1:A:159[A]:THR:OG1	6:A:2332:HOH:O	2.15	0.53
1:A:83:MET:SD	1:A:111:ALA:HA	2.48	0.53
1:A:55:LEU:O	1:A:58:GLN:HG2	2.12	0.49
1:B:40:THR:O	3:B:1319:IPA:C3	2.62	0.47
2:B:1318:NAG:H82	6:B:2473:HOH:O	2.16	0.45
1:B:144[B]:LEU:HD21	1:B:285:ILE:HG21	1.99	0.45
1:B:40:THR:HB	3:B:1319:IPA:H33	1.99	0.44
1:B:83[B]:MET:SD	1:B:111:ALA:HA	2.57	0.44
1:B:74:ASN:HB3	6:B:2174:HOH:O	2.18	0.43
1:B:159:THR:O	6:B:2281:HOH:O	2.21	0.42
1:A:282[A]:ALA:HB1	1:B:219:LEU:HB2	2.02	0.41
1:A:298[A]:MET:CE	6:A:2033:HOH:O	2.69	0.41
1:A:28:SER:OG	6:A:2097:HOH:O	2.04	0.41
1:B:267[B]:THR:O	1:B:268[B]:PRO:C	2.58	0.41
1:A:76[B]:THR:HG23	1:A:156:GLN:OE1	2.20	0.41
1:B:235[B]:VAL:HG21	1:B:257:ASP:HB3	2.03	0.40

All (7) symmetry-related close contacts are listed below. The label for Atom-2 includes the symmetry operator and encoded unit-cell translations to be applied.

Atom-1	Atom-2	Interatomic distance (Å)	Clash overlap (Å)
6:A:2065:HOH:O	6:A:2444:HOH:O[1_655]	1.79	0.41

Continued on next page...

Continued from previous page...

Atom-1	Atom-2	Interatomic distance (Å)	Clash overlap (Å)
6:A:2071:HOH:O	6:A:2442:HOH:O[1_655]	1.92	0.28
1:B:309:ARG:NH1	6:B:2390:HOH:O[1_665]	1.94	0.26
6:B:2022:HOH:O	6:B:2385:HOH:O[1_565]	2.01	0.19
6:A:2305:HOH:O	6:B:2372:HOH:O[1_554]	2.13	0.07
6:A:2055:HOH:O	6:A:2434:HOH:O[1_655]	2.15	0.05
6:A:2072:HOH:O	6:A:2393:HOH:O[1_655]	2.19	0.01

5.3 Torsion angles [i](#)

5.3.1 Protein backbone [i](#)

In the following table, the Percentiles column shows the percent Ramachandran outliers of the chain as a percentile score with respect to all X-ray entries followed by that with respect to entries of similar resolution.

The Analysed column shows the number of residues for which the backbone conformation was analysed, and the total number of residues.

Mol	Chain	Analysed	Favoured	Allowed	Outliers	Percentiles	
1	A	332/317 (105%)	318 (96%)	12 (4%)	2 (1%)	30	6
1	B	330/317 (104%)	317 (96%)	13 (4%)	0	100	100
All	All	662/634 (104%)	635 (96%)	25 (4%)	2 (0%)	52	15

All (2) Ramachandran outliers are listed below:

Mol	Chain	Res	Type
1	A	279[A]	ALA
1	A	279[B]	ALA

5.3.2 Protein sidechains [i](#)

In the following table, the Percentiles column shows the percent sidechain outliers of the chain as a percentile score with respect to all X-ray entries followed by that with respect to entries of similar resolution.

The Analysed column shows the number of residues for which the sidechain conformation was analysed, and the total number of residues.

Mol	Chain	Analysed	Rotameric	Outliers	Percentiles	
1	A	266/255 (104%)	264 (99%)	2 (1%)	86	57

Continued on next page...

Continued from previous page...

Mol	Chain	Analysed	Rotameric	Outliers	Percentiles	
1	B	270/255 (106%)	265 (98%)	5 (2%)	65	25
All	All	536/510 (105%)	529 (99%)	7 (1%)	78	38

All (7) residues with a non-rotameric sidechain are listed below:

Mol	Chain	Res	Type
1	A	99	LEU
1	A	163	LEU
1	B	99	LEU
1	B	163	LEU
1	B	219	LEU
1	B	268[A]	PRO
1	B	268[B]	PRO

Some sidechains can be flipped to improve hydrogen bonding and reduce clashes. There are no such sidechains identified.

5.3.3 RNA ⓘ

There are no RNA molecules in this entry.

5.4 Non-standard residues in protein, DNA, RNA chains ⓘ

There are no non-standard protein/DNA/RNA residues in this entry.

5.5 Carbohydrates ⓘ

6 carbohydrates are modelled in this entry.

In the following table, the Counts columns list the number of bonds (or angles) for which Mogul statistics could be retrieved, the number of bonds (or angles) that are observed in the model and the number of bonds (or angles) that are defined in the chemical component dictionary. The Link column lists molecule types, if any, to which the group is linked. The Z score for a bond length (or angle) is the number of standard deviations the observed value is removed from the expected value. A bond length (or angle) with $|Z| > 2$ is considered an outlier worth inspection. RMSZ is the root-mean-square of all Z scores of the bond lengths (or angles).

Mol	Type	Chain	Res	Link	Bond lengths			Bond angles		
					Counts	RMSZ	$\# Z > 2$	Counts	RMSZ	$\# Z > 2$
2	NAG	A	1317[A]	1,2	14,14,15	1.18	1 (7%)	15,19,21	1.56	4 (26%)

Mol	Type	Chain	Res	Link	Bond lengths			Bond angles		
					Counts	RMSZ	# Z > 2	Counts	RMSZ	# Z > 2
2	NAG	A	1317[B]	1,2	14,14,15	3.00	7 (50%)	15,19,21	3.34	11 (73%)
2	NAG	A	1318[A]	2	14,14,15	1.33	2 (14%)	15,19,21	2.76	8 (53%)
2	NAG	A	1318[B]	2	14,14,15	2.45	2 (14%)	15,19,21	1.73	4 (26%)
2	NAG	B	1317	1,2	14,14,15	3.01	7 (50%)	15,19,21	2.23	3 (20%)
2	NAG	B	1318	2	14,14,15	1.78	3 (21%)	15,19,21	2.26	7 (46%)

In the following table, the Chirals column lists the number of chiral outliers, the number of chiral centers analysed, the number of these observed in the model and the number defined in the chemical component dictionary. Similar counts are reported in the Torsion and Rings columns. '-' means no outliers of that kind were identified.

Mol	Type	Chain	Res	Link	Chirals	Torsions	Rings
2	NAG	A	1317[A]	1,2	-	0/6/23/26	0/1/1/1
2	NAG	A	1317[B]	1,2	-	0/6/23/26	0/1/1/1
2	NAG	A	1318[A]	2	-	0/6/23/26	0/1/1/1
2	NAG	A	1318[B]	2	-	0/6/23/26	0/1/1/1
2	NAG	B	1317	1,2	-	0/6/23/26	0/1/1/1
2	NAG	B	1318	2	-	0/6/23/26	0/1/1/1

All (22) bond length outliers are listed below:

Mol	Chain	Res	Type	Atoms	Z	Observed(Å)	Ideal(Å)
2	B	1317	NAG	C1-C2	-8.37	1.40	1.52
2	A	1318[B]	NAG	O5-C1	-7.77	1.31	1.43
2	A	1317[B]	NAG	C3-C2	-4.39	1.42	1.52
2	A	1317[B]	NAG	C1-C2	-3.85	1.47	1.52
2	A	1317[B]	NAG	C2-N2	-3.40	1.40	1.46
2	A	1318[A]	NAG	O7-C7	-3.08	1.16	1.23
2	B	1318	NAG	O5-C1	-3.01	1.38	1.43
2	A	1318[B]	NAG	O7-C7	-2.85	1.16	1.23
2	B	1317	NAG	C4-C5	-2.59	1.47	1.53
2	A	1318[A]	NAG	C3-C2	-2.39	1.47	1.52
2	A	1317[A]	NAG	C4-C3	-2.39	1.46	1.52
2	B	1318	NAG	C1-C2	-2.37	1.49	1.52
2	A	1317[B]	NAG	C4-C5	-2.16	1.48	1.53
2	A	1317[B]	NAG	C8-C7	-2.03	1.46	1.50
2	B	1317	NAG	O4-C4	2.17	1.48	1.43
2	B	1317	NAG	C2-N2	2.23	1.50	1.46
2	B	1317	NAG	O6-C6	2.25	1.52	1.42
2	B	1317	NAG	C4-C3	2.77	1.59	1.52
2	B	1318	NAG	C8-C7	3.25	1.57	1.50

Continued on next page...

Continued from previous page...

Mol	Chain	Res	Type	Atoms	Z	Observed(Å)	Ideal(Å)
2	B	1317	NAG	C6-C5	3.91	1.65	1.51
2	A	1317[B]	NAG	C4-C3	5.42	1.66	1.52
2	A	1317[B]	NAG	O3-C3	6.05	1.57	1.43

All (37) bond angle outliers are listed below:

Mol	Chain	Res	Type	Atoms	Z	Observed(°)	Ideal(°)
2	A	1317[B]	NAG	O3-C3-C4	-8.60	90.97	110.36
2	B	1317	NAG	O4-C4-C3	-4.72	99.70	110.36
2	A	1317[B]	NAG	C4-C3-C2	-4.30	104.67	111.34
2	B	1318	NAG	C4-C3-C2	-4.28	104.70	111.34
2	B	1317	NAG	O6-C6-C5	-4.03	97.84	111.30
2	A	1317[B]	NAG	C3-C4-C5	-3.94	103.21	110.23
2	A	1318[A]	NAG	C1-O5-C5	-3.65	106.78	112.14
2	B	1318	NAG	C1-O5-C5	-3.62	106.81	112.14
2	B	1317	NAG	C6-C5-C4	-3.43	104.39	112.99
2	A	1318[A]	NAG	C4-C3-C2	-3.18	106.41	111.34
2	A	1317[B]	NAG	O7-C7-C8	-3.17	116.23	122.07
2	B	1318	NAG	O5-C5-C4	-2.97	105.22	110.13
2	A	1317[B]	NAG	C2-N2-C7	-2.85	119.39	123.11
2	A	1318[A]	NAG	O5-C5-C6	-2.71	101.55	107.34
2	B	1318	NAG	O4-C4-C5	-2.59	102.40	109.23
2	A	1317[B]	NAG	O5-C5-C6	-2.58	101.81	107.34
2	A	1317[B]	NAG	C1-O5-C5	-2.55	108.39	112.14
2	B	1318	NAG	O6-C6-C5	-2.52	102.88	111.30
2	A	1318[A]	NAG	O7-C7-N2	-2.40	116.94	121.84
2	A	1317[A]	NAG	O7-C7-N2	-2.33	117.09	121.84
2	A	1317[B]	NAG	O6-C6-C5	-2.28	103.68	111.30
2	A	1318[B]	NAG	O5-C5-C6	2.02	111.66	107.34
2	A	1318[B]	NAG	O3-C3-C4	2.08	115.06	110.36
2	B	1318	NAG	C2-N2-C7	2.10	125.84	123.11
2	A	1317[A]	NAG	C3-C4-C5	2.28	114.28	110.23
2	A	1317[B]	NAG	C6-C5-C4	2.31	118.77	112.99
2	A	1318[A]	NAG	C6-C5-C4	2.37	118.94	112.99
2	B	1318	NAG	O3-C3-C2	2.44	114.59	109.37
2	A	1317[B]	NAG	O4-C4-C3	2.46	115.91	110.36
2	A	1317[A]	NAG	O7-C7-C8	2.68	127.00	122.07
2	A	1318[B]	NAG	O6-C6-C5	2.82	120.71	111.30
2	A	1317[A]	NAG	C2-N2-C7	2.98	126.98	123.11
2	A	1318[A]	NAG	C8-C7-N2	3.09	122.02	116.10
2	A	1317[B]	NAG	O7-C7-N2	3.24	128.45	121.84
2	A	1318[B]	NAG	C1-O5-C5	3.90	117.87	112.14

Continued on next page...

Continued from previous page...

Mol	Chain	Res	Type	Atoms	Z	Observed(°)	Ideal(°)
2	A	1318[A]	NAG	C3-C4-C5	4.68	118.58	110.23
2	A	1318[A]	NAG	C2-N2-C7	5.75	130.58	123.11

There are no chirality outliers.

There are no torsion outliers.

There are no ring outliers.

2 monomers are involved in 3 short contacts:

Mol	Chain	Res	Type	Clashes	Symm-Clashes
2	A	1318[B]	NAG	2	0
2	B	1318	NAG	1	0

5.6 Ligand geometry

Of 12 ligands modelled in this entry, 9 are monoatomic - leaving 3 for Mogul analysis.

In the following table, the Counts columns list the number of bonds (or angles) for which Mogul statistics could be retrieved, the number of bonds (or angles) that are observed in the model and the number of bonds (or angles) that are defined in the chemical component dictionary. The Link column lists molecule types, if any, to which the group is linked. The Z score for a bond length (or angle) is the number of standard deviations the observed value is removed from the expected value. A bond length (or angle) with $|Z| > 2$ is considered an outlier worth inspection. RMSZ is the root-mean-square of all Z scores of the bond lengths (or angles).

Mol	Type	Chain	Res	Link	Bond lengths			Bond angles		
					Counts	RMSZ	$\# Z > 2$	Counts	RMSZ	$\# Z > 2$
3	IPA	A	1319	-	3,3,3	0.65	0	3,3,3	0.68	0
3	IPA	B	1319	-	3,3,3	0.58	0	3,3,3	0.59	0
3	IPA	B	1320	-	3,3,3	0.90	0	3,3,3	0.38	0

In the following table, the Chirals column lists the number of chiral outliers, the number of chiral centers analysed, the number of these observed in the model and the number defined in the chemical component dictionary. Similar counts are reported in the Torsion and Rings columns. '-' means no outliers of that kind were identified.

Mol	Type	Chain	Res	Link	Chirals	Torsions	Rings
3	IPA	A	1319	-	-	0/0/0/0	0/0/0/0
3	IPA	B	1319	-	-	0/0/0/0	0/0/0/0
3	IPA	B	1320	-	-	0/0/0/0	0/0/0/0

There are no bond length outliers.

There are no bond angle outliers.

There are no chirality outliers.

There are no torsion outliers.

There are no ring outliers.

1 monomer is involved in 4 short contacts:

Mol	Chain	Res	Type	Clashes	Symm-Clashes
3	B	1319	IPA	4	0

5.7 Other polymers [i](#)

There are no such residues in this entry.

5.8 Polymer linkage issues [i](#)

There are no chain breaks in this entry.

6 Fit of model and data [i](#)

6.1 Protein, DNA and RNA chains [i](#)

In the following table, the column labelled ‘#RSRZ> 2’ contains the number (and percentage) of RSRZ outliers, followed by percent RSRZ outliers for the chain as percentile scores relative to all X-ray entries and entries of similar resolution. The OWAB column contains the minimum, median, 95th percentile and maximum values of the occupancy-weighted average B-factor per residue. The column labelled ‘Q< 0.9’ lists the number of (and percentage) of residues with an average occupancy less than 0.9.

Mol	Chain	Analysed	<RSRZ>	#RSRZ>2	OWAB(Å ²)	Q<0.9
1	A	316/317 (99%)	-0.64	2 (0%) 90 80	5, 9, 19, 31	0
1	B	316/317 (99%)	-0.59	7 (2%) 65 51	5, 9, 18, 31	0
All	All	632/634 (99%)	-0.61	9 (1%) 78 64	5, 9, 19, 31	0

All (9) RSRZ outliers are listed below:

Mol	Chain	Res	Type	RSRZ
1	B	144[A]	LEU	4.6
1	A	282[A]	ALA	3.3
1	B	142	GLY	2.9
1	B	145	ASP	2.7
1	B	146	ALA	2.5
1	B	147	LEU	2.5
1	B	143	PRO	2.4
1	A	316	THR	2.2
1	B	148	ALA	2.0

6.2 Non-standard residues in protein, DNA, RNA chains [i](#)

There are no non-standard protein/DNA/RNA residues in this entry.

6.3 Carbohydrates [i](#)

In the following table, the Atoms column lists the number of modelled atoms in the group and the number defined in the chemical component dictionary. LLDF column lists the quality of electron density of the group with respect to its neighbouring residues in protein, DNA or RNA chains. The B-factors column lists the minimum, median, 95th percentile and maximum values of B factors of atoms in the group. The column labelled ‘Q< 0.9’ lists the number of atoms with occupancy less than 0.9.

Mol	Type	Chain	Res	Atoms	RSCC	RSR	LLDF	B-factors(\AA^2)	Q<0.9
2	NAG	A	1317[B]	14/15	0.94	0.11	3.67	6,10,14,19	14
2	NAG	A	1317[A]	14/15	0.94	0.11	3.59	7,8,10,13	14
2	NAG	B	1317	14/15	0.94	0.07	3.23	15,17,25,26	0
2	NAG	A	1318[B]	14/15	0.78	0.26	-	11,23,32,36	14
2	NAG	A	1318[A]	14/15	0.78	0.26	-	19,29,41,46	14
2	NAG	B	1318	14/15	0.94	0.07	-	21,29,33,35	0

6.4 Ligands [i](#)

In the following table, the Atoms column lists the number of modelled atoms in the group and the number defined in the chemical component dictionary. LLDF column lists the quality of electron density of the group with respect to its neighbouring residues in protein, DNA or RNA chains. The B-factors column lists the minimum, median, 95th percentile and maximum values of B factors of atoms in the group. The column labelled 'Q< 0.9' lists the number of atoms with occupancy less than 0.9.

Mol	Type	Chain	Res	Atoms	RSCC	RSR	LLDF	B-factors(\AA^2)	Q<0.9
4	K	A	1322	1/1	0.92	0.34	51.55	52,52,52,52	0
5	NA	B	1324	1/1	0.89	0.16	17.18	34,34,34,34	0
5	NA	A	1323	1/1	0.96	0.35	14.60	29,29,29,29	0
3	IPA	A	1319	4/4	0.96	0.12	12.35	12,13,13,16	0
3	IPA	B	1320	4/4	0.88	0.11	10.63	17,17,24,25	4
3	IPA	B	1319	4/4	0.79	0.12	10.02	28,30,31,51	0
5	NA	B	1323	1/1	0.98	0.05	-0.35	33,33,33,33	0
4	K	B	1321	1/1	0.55	0.39	-	56,56,56,56	0
4	K	A	1320	1/1	0.96	0.28	-	40,40,40,40	0
5	NA	B	1322	1/1	0.98	0.07	-	29,29,29,29	0
4	K	A	1321	1/1	0.76	0.32	-	58,58,58,58	0
5	NA	B	1325	1/1	0.96	0.07	-	20,20,20,20	1

6.5 Other polymers [i](#)

There are no such residues in this entry.