



Full wwPDB X-ray Structure Validation Report ⓘ

Feb 19, 2016 – 09:29 PM GMT

PDB ID : 5AC0
Title : ovis aries Aldehyde Dehydrogenase 1A1 in complex with a duocarmycin analog
Authors : Koch, M.F.; Harteis, S.; Blank, I.D.; Pestel, G.; Tietze, L.F.; Ochsenfeld, C.;
Schneider, S.; Sieber, S.A.
Deposited on : 2015-08-10
Resolution : 1.90 Å(reported)

This is a Full wwPDB X-ray Structure Validation Report for a publicly released PDB entry.
We welcome your comments at validation@mail.wwpdb.org
A user guide is available at
<http://wwpdb.org/validation/2016/XrayValidationReportHelp>
with specific help available everywhere you see the ⓘ symbol.

The following versions of software and data (see [references ⓘ](#)) were used in the production of this report:

MolProbity : 4.02b-467
Mogul : 1.7.1 (RC1), CSD as537be (2016)
Xtriage (Phenix) : 1.9-1692
EDS : rb-20026982
Percentile statistics : 20151230.v01 (using entries in the PDB archive December 30th 2015)
Refmac : 5.8.0135
CCP4 : 6.5.0
Ideal geometry (proteins) : Engh & Huber (2001)
Ideal geometry (DNA, RNA) : Parkinson et al. (1996)
Validation Pipeline (wwPDB-VP) : rb-20026982

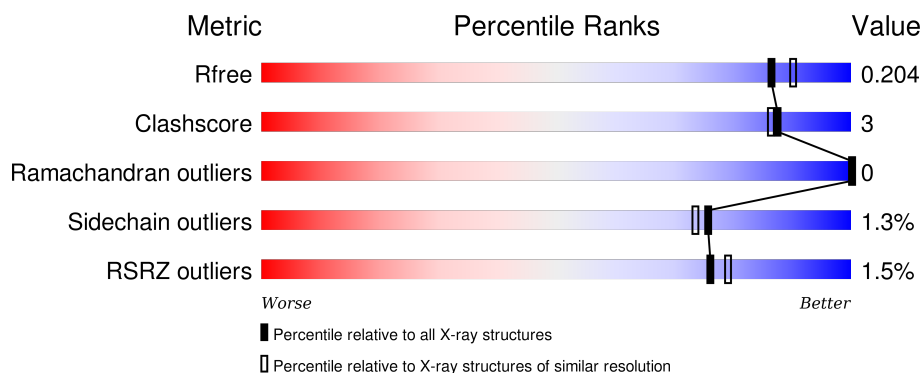
1 Overall quality at a glance

The following experimental techniques were used to determine the structure:

X-RAY DIFFRACTION

The reported resolution of this entry is 1.90 Å.

Percentile scores (ranging between 0-100) for global validation metrics of the entry are shown in the following graphic. The table shows the number of entries on which the scores are based.



Metric	Whole archive (#Entries)	Similar resolution (#Entries, resolution range(Å))
R_{free}	91344	4755 (1.90-1.90)
Clashscore	102246	5398 (1.90-1.90)
Ramachandran outliers	100387	5338 (1.90-1.90)
Sidechain outliers	100360	5339 (1.90-1.90)
RSRZ outliers	91569	4766 (1.90-1.90)

The table below summarises the geometric issues observed across the polymeric chains and their fit to the electron density. The red, orange, yellow and green segments on the lower bar indicate the fraction of residues that contain outliers for ≥ 3 , 2, 1 and 0 types of geometric quality criteria. A grey segment represents the fraction of residues that are not modelled. The numeric value for each fraction is indicated below the corresponding segment, with a dot representing fractions $\leq 5\%$. The upper red bar (where present) indicates the fraction of residues that have poor fit to the electron density. The numeric value is given above the bar.

Mol	Chain	Length	Quality of chain
1	A	501	<div> <div style="width: 100%; height: 10px; background: linear-gradient(to right, red 1%, orange 1%, yellow 1%, green 98%);"></div> <div style="display: flex; justify-content: space-between; width: 90%; margin: 0 auto;"> % 89% 9% . </div> </div>
1	B	501	<div> <div style="width: 100%; height: 10px; background: linear-gradient(to right, red 2%, orange 1%, yellow 1%, green 96%);"></div> <div style="display: flex; justify-content: space-between; width: 90%; margin: 0 auto;"> 2% 92% 7% . </div> </div>

The following table lists non-polymeric compounds, carbohydrate monomers and non-standard residues in protein, DNA, RNA chains that are outliers for geometric or electron-density-fit criteria:

Mol	Type	Chain	Res	Chirality	Geometry	Clashes	Electron density
3	K9P	A	551	-	-	-	X

2 Entry composition [i](#)

There are 5 unique types of molecules in this entry. The entry contains 8593 atoms, of which 0 are hydrogens and 0 are deuteriums.

In the tables below, the ZeroOcc column contains the number of atoms modelled with zero occupancy, the AltConf column contains the number of residues with at least one atom in alternate conformation and the Trace column contains the number of residues modelled with at most 2 atoms.

- Molecule 1 is a protein called RETINAL DEHYDROGENASE 1.

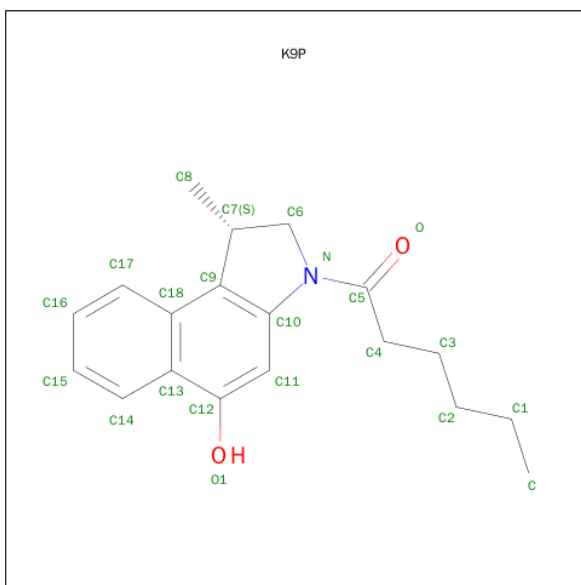
Mol	Chain	Residues	Atoms					ZeroOcc	AltConf	Trace
1	A	494	Total	C	N	O	S	0	10	0
			3878	2471	652	731	24			
1	B	494	Total	C	N	O	S	0	10	0
			3882	2473	653	733	23			

- Molecule 2 is NICOTINAMIDE-ADENINE-DINUCLEOTIDE (three-letter code: NAD) (formula: $C_{21}H_{27}N_7O_{14}P_2$).



Mol	Chain	Residues	Atoms					ZeroOcc	AltConf
2	A	1	Total	C	N	O	P	0	0
			44	21	7	14	2		
2	B	1	Total	C	N	O	P	0	0
			44	21	7	14	2		

- Molecule 3 is 1-[(1S)-1-METHYL-5-OXIDANYL-1,2-DIHYDROBENZO[E]INDOL-3-YL]H EXAN-1-ONE (three-letter code: K9P) (formula: $C_{19}H_{23}NO_2$).



Mol	Chain	Residues	Atoms				ZeroOcc	AltConf
3	A	1	Total	C	N	O	0	0
			22	19	1	2		
3	B	1	Total	C	N	O	0	0
			22	19	1	2		

- Molecule 4 is MAGNESIUM ION (three-letter code: MG) (formula: Mg).

Mol	Chain	Residues	Atoms		ZeroOcc	AltConf
4	B	1	Total	Mg	0	0
			1	1		
4	A	1	Total	Mg	0	0
			1	1		

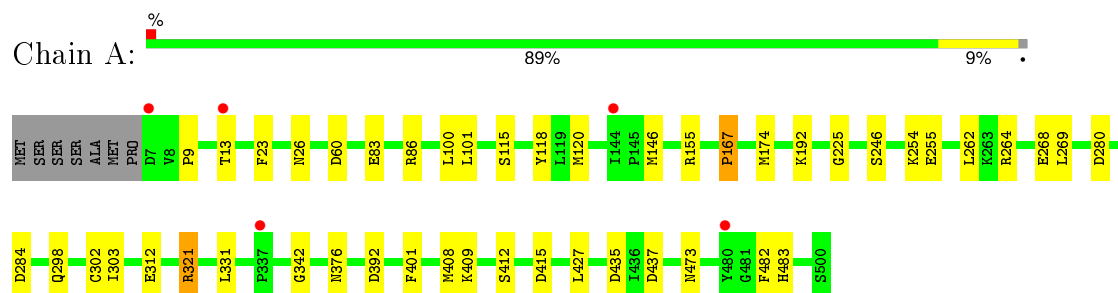
- Molecule 5 is water.

Mol	Chain	Residues	Atoms		ZeroOcc	AltConf
5	A	379	Total	O	0	0
			379	379		
5	B	319	Total	O	0	1
			320	320		

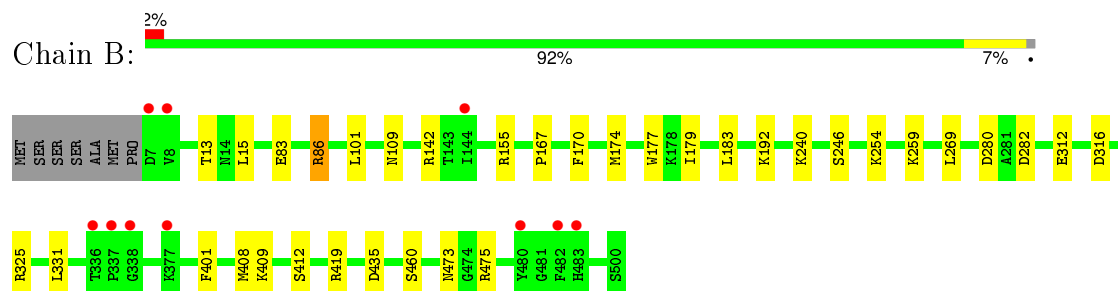
3 Residue-property plots [i](#)

These plots are drawn for all protein, RNA and DNA chains in the entry. The first graphic for a chain summarises the proportions of errors displayed in the second graphic. The second graphic shows the sequence view annotated by issues in geometry and electron density. Residues are color-coded according to the number of geometric quality criteria for which they contain at least one outlier: green = 0, yellow = 1, orange = 2 and red = 3 or more. A red dot above a residue indicates a poor fit to the electron density ($\text{RSRZ} > 2$). Stretches of 2 or more consecutive residues without any outlier are shown as a green connector. Residues present in the sample, but not in the model, are shown in grey.

• Molecule 1: RETINAL DEHYDROGENASE 1



• Molecule 1: RETINAL DEHYDROGENASE 1



4 Data and refinement statistics

Property	Value	Source
Space group	P 21 21 2	Depositor
Cell constants a, b, c, α , β , γ	93.56Å 150.64Å 80.68Å 90.00° 90.00° 90.00°	Depositor
Resolution (Å)	50.21 – 1.90 50.21 – 1.90	Depositor EDS
% Data completeness (in resolution range)	99.9 (50.21-1.90) 99.8 (50.21-1.90)	Depositor EDS
R_{merge}	0.12	Depositor
R_{sym}	(Not available)	Depositor
$\langle I/\sigma(I) \rangle$ ¹	1.75 (at 1.90Å)	Xtriage
Refinement program	REFMAC 5.8.0073	Depositor
R, R_{free}	0.153 , 0.197 0.166 , 0.204	Depositor DCC
R_{free} test set	4525 reflections (5.27%)	DCC
Wilson B-factor (Å ²)	22.1	Xtriage
Anisotropy	0.828	Xtriage
Bulk solvent k_{sol} (e/Å ³), B_{sol} (Å ²)	0.34 , 41.1	EDS
Estimated twinning fraction	No twinning to report.	Xtriage
L-test for twinning ²	$\langle L \rangle = 0.49$, $\langle L^2 \rangle = 0.32$	Xtriage
Outliers	0 of 90844 reflections	Xtriage
F_o, F_c correlation	0.97	EDS
Total number of atoms	8593	wwPDB-VP
Average B, all atoms (Å ²)	25.0	wwPDB-VP

Xtriage's analysis on translational NCS is as follows: *The largest off-origin peak in the Patterson function is 3.31% of the height of the origin peak. No significant pseudotranslation is detected.*

¹Intensities estimated from amplitudes.

²Theoretical values of $\langle |L| \rangle$, $\langle L^2 \rangle$ for acentric reflections are 0.5, 0.375 respectively for untwinned datasets, and 0.333, 0.2 for perfectly twinned datasets.

5 Model quality

5.1 Standard geometry

Bond lengths and bond angles in the following residue types are not validated in this section: MG, K9P, NAD

The Z score for a bond length (or angle) is the number of standard deviations the observed value is removed from the expected value. A bond length (or angle) with $|Z| > 5$ is considered an outlier worth inspection. RMSZ is the root-mean-square of all Z scores of the bond lengths (or angles).

Mol	Chain	Bond lengths		Bond angles	
		RMSZ	$\# Z > 5$	RMSZ	$\# Z > 5$
1	A	0.97	4/3977 (0.1%)	0.93	13/5372 (0.2%)
1	B	0.94	1/3978 (0.0%)	1.00	17/5373 (0.3%)
All	All	0.96	5/7955 (0.1%)	0.97	30/10745 (0.3%)

All (5) bond length outliers are listed below:

Mol	Chain	Res	Type	Atoms	Z	Observed(Å)	Ideal(Å)
1	A	482	PHE	C-N	-12.68	1.04	1.34
1	A	483	HIS	C-N	-7.53	1.16	1.34
1	A	167	PRO	N-CD	-7.22	1.37	1.47
1	A	115	SER	CB-OG	-6.21	1.34	1.42
1	B	177	TRP	CE3-CZ3	5.57	1.48	1.38

All (30) bond angle outliers are listed below:

Mol	Chain	Res	Type	Atoms	Z	Observed(°)	Ideal(°)
1	B	86[A]	ARG	NE-CZ-NH1	11.78	126.19	120.30
1	B	86[B]	ARG	NE-CZ-NH1	11.78	126.19	120.30
1	B	86[A]	ARG	NE-CZ-NH2	-11.70	114.45	120.30
1	B	86[B]	ARG	NE-CZ-NH2	-11.70	114.45	120.30
1	B	155	ARG	NE-CZ-NH1	9.94	125.27	120.30
1	A	155	ARG	NE-CZ-NH1	9.16	124.88	120.30
1	A	155	ARG	NE-CZ-NH2	-8.49	116.05	120.30
1	B	155	ARG	NE-CZ-NH2	-8.01	116.30	120.30
1	B	282	ASP	CB-CG-OD1	7.90	125.41	118.30
1	B	142	ARG	NE-CZ-NH1	7.02	123.81	120.30
1	A	435	ASP	CB-CG-OD1	6.48	124.13	118.30
1	B	280	ASP	CB-CG-OD2	6.39	124.06	118.30
1	B	316	ASP	CB-CG-OD1	6.10	123.79	118.30
1	B	282	ASP	CB-CG-OD2	-6.04	112.86	118.30

Continued on next page...

Continued from previous page...

Mol	Chain	Res	Type	Atoms	Z	Observed(°)	Ideal(°)
1	A	392[A]	ASP	CB-CG-OD1	6.02	123.72	118.30
1	A	392[B]	ASP	CB-CG-OD1	6.02	123.72	118.30
1	A	280	ASP	CB-CG-OD2	-6.00	112.89	118.30
1	A	60	ASP	CB-CG-OD1	5.96	123.66	118.30
1	A	167	PRO	O-C-N	5.94	132.20	122.70
1	A	269	LEU	C-N-CA	-5.93	109.84	122.30
1	B	419	ARG	NE-CZ-NH2	-5.93	117.33	120.30
1	B	435	ASP	CB-CG-OD1	5.93	123.63	118.30
1	A	321	ARG	NE-CZ-NH2	-5.88	117.36	120.30
1	B	325	ARG	NE-CZ-NH1	5.84	123.22	120.30
1	B	142	ARG	NE-CZ-NH2	-5.73	117.44	120.30
1	B	475	ARG	NE-CZ-NH1	5.61	123.10	120.30
1	B	269	LEU	C-N-CA	-5.48	110.79	122.30
1	A	264	ARG	NE-CZ-NH1	5.44	123.02	120.30
1	A	120	MET	CG-SD-CE	5.06	108.29	100.20
1	A	437	ASP	CB-CG-OD2	5.04	122.84	118.30

There are no chirality outliers.

There are no planarity outliers.

5.2 Too-close contacts ⓘ

In the following table, the Non-H and H(model) columns list the number of non-hydrogen atoms and hydrogen atoms in the chain respectively. The H(added) column lists the number of hydrogen atoms added and optimized by MolProbity. The Clashes column lists the number of clashes within the asymmetric unit, whereas Symm-Clashes lists symmetry related clashes.

Mol	Chain	Non-H	H(model)	H(added)	Clashes	Symm-Clashes
1	A	3878	0	3854	24	0
1	B	3882	0	3857	15	0
2	A	44	0	26	5	0
2	B	44	0	26	3	0
3	A	22	0	20	0	0
3	B	22	0	22	2	0
4	A	1	0	0	0	0
4	B	1	0	0	0	0
5	A	379	0	0	5	0
5	B	320	0	0	2	0
All	All	8593	0	7805	41	0

The all-atom clashscore is defined as the number of clashes found per 1000 atoms (including

hydrogen atoms). The all-atom clashscore for this structure is 3.

All (41) close contacts within the same asymmetric unit are listed below, sorted by their clash magnitude.

Atom-1	Atom-2	Interatomic distance (Å)	Clash overlap (Å)
2:A:550:NAD:C5N	5:A:2186:HOH:O	2.33	0.76
1:A:167:PRO:HG2	1:A:174[B]:MET:SD	2.28	0.74
1:A:83:GLU:OE1	1:A:86[B]:ARG:NH2	2.21	0.73
2:A:550:NAD:H5N	5:A:2186:HOH:O	1.92	0.70
1:A:284:ASP:OD1	1:A:321:ARG:NH2	2.26	0.68
1:A:268:GLU:OE1	5:A:2243:HOH:O	2.15	0.63
2:B:550:NAD:C5N	5:B:2165:HOH:O	2.49	0.61
1:B:167:PRO:HG2	1:B:174[B]:MET:SD	2.41	0.60
1:A:312:GLU:HG2	1:A:409:LYS:HD3	1.84	0.59
1:B:15:LEU:HD11	1:B:101:LEU:CD1	2.34	0.57
1:A:101:LEU:HD23	1:A:101:LEU:C	2.25	0.57
2:B:550:NAD:H5N	5:B:2165:HOH:O	2.05	0.56
1:B:83:GLU:OE1	1:B:86[A]:ARG:NH2	2.37	0.55
1:A:146:MET:HE3	1:B:460:SER:HB2	1.89	0.55
1:A:246:SER:HB3	2:A:550:NAD:O4D	2.07	0.54
1:B:246:SER:HB3	2:B:550:NAD:O4D	2.08	0.52
1:B:254:LYS:CE	1:B:473:ASN:OD1	2.58	0.52
1:B:170:PHE:CZ	3:B:551:K9P:H83C	2.46	0.50
1:A:298:GLN:NE2	1:A:342:GLY:H	2.09	0.49
1:A:302[B]:CYS:SG	1:A:303:ILE:HG23	2.53	0.48
1:A:9:PRO:HG2	1:A:100:LEU:HD13	1.95	0.48
1:A:118:TYR:OH	5:A:2151:HOH:O	2.19	0.45
1:B:15:LEU:HD11	1:B:101:LEU:HD13	1.98	0.44
1:A:225:GLY:HA3	2:A:550:NAD:C8A	2.47	0.44
1:A:146:MET:CE	1:B:460:SER:HB2	2.47	0.44
1:A:262:LEU:HD23	1:B:254:LYS:HD2	2.00	0.44
1:A:83:GLU:OE1	1:A:86[B]:ARG:NE	2.51	0.43
1:B:312:GLU:HG2	1:B:409:LYS:HD2	2.01	0.43
1:A:83:GLU:OE1	1:A:86[B]:ARG:CZ	2.66	0.43
1:A:412:SER:HB3	1:A:415:ASP:HB3	2.01	0.43
1:A:254:LYS:CE	1:A:473:ASN:OD1	2.67	0.43
1:A:255[A]:GLU:CD	1:B:259:LYS:HG2	2.39	0.42
1:B:179:ILE:O	1:B:183:LEU:HG	2.19	0.42
2:A:550:NAD:C6N	5:A:2186:HOH:O	2.64	0.41
1:A:331:LEU:HD12	1:A:331:LEU:N	2.35	0.41
3:B:551:K9P:H11	3:B:551:K9P:O	2.20	0.41
1:B:331:LEU:N	1:B:331:LEU:HD12	2.35	0.41
1:A:376:ASN:O	1:A:376:ASN:CG	2.60	0.40

Continued on next page...

Continued from previous page...

Atom-1	Atom-2	Interatomic distance (Å)	Clash overlap (Å)
1:A:23:PHE:CZ	1:A:26:ASN:HA	2.56	0.40
1:B:83:GLU:OE1	1:B:86[A]:ARG:NE	2.55	0.40
1:A:302[B]:CYS:SG	1:A:427:LEU:HD21	2.62	0.40

There are no symmetry-related clashes.

5.3 Torsion angles [i](#)

5.3.1 Protein backbone [i](#)

In the following table, the Percentiles column shows the percent Ramachandran outliers of the chain as a percentile score with respect to all X-ray entries followed by that with respect to entries of similar resolution.

The Analysed column shows the number of residues for which the backbone conformation was analysed, and the total number of residues.

Mol	Chain	Analysed	Favoured	Allowed	Outliers	Percentiles	
1	A	502/501 (100%)	483 (96%)	19 (4%)	0	100	100
1	B	502/501 (100%)	486 (97%)	16 (3%)	0	100	100
All	All	1004/1002 (100%)	969 (96%)	35 (4%)	0	100	100

There are no Ramachandran outliers to report.

5.3.2 Protein sidechains [i](#)

In the following table, the Percentiles column shows the percent sidechain outliers of the chain as a percentile score with respect to all X-ray entries followed by that with respect to entries of similar resolution.

The Analysed column shows the number of residues for which the sidechain conformation was analysed, and the total number of residues.

Mol	Chain	Analysed	Rotameric	Outliers	Percentiles	
1	A	418/415 (101%)	414 (99%)	4 (1%)	82	81
1	B	418/415 (101%)	411 (98%)	7 (2%)	68	64
All	All	836/830 (101%)	825 (99%)	11 (1%)	76	73

All (11) residues with a non-rotameric sidechain are listed below:

Mol	Chain	Res	Type
1	A	13	THR
1	A	192	LYS
1	A	401	PHE
1	A	408	MET
1	B	13	THR
1	B	109	ASN
1	B	192	LYS
1	B	240	LYS
1	B	401	PHE
1	B	408	MET
1	B	412	SER

Some sidechains can be flipped to improve hydrogen bonding and reduce clashes. All (4) such sidechains are listed below:

Mol	Chain	Res	Type
1	A	25	ASN
1	A	29	HIS
1	A	109	ASN
1	A	298	GLN

5.3.3 RNA [i](#)

There are no RNA molecules in this entry.

5.4 Non-standard residues in protein, DNA, RNA chains [i](#)

There are no non-standard protein/DNA/RNA residues in this entry.

5.5 Carbohydrates [i](#)

There are no carbohydrates in this entry.

5.6 Ligand geometry [i](#)

Of 6 ligands modelled in this entry, 2 are monoatomic - leaving 4 for Mogul analysis.

In the following table, the Counts columns list the number of bonds (or angles) for which Mogul statistics could be retrieved, the number of bonds (or angles) that are observed in the model and the number of bonds (or angles) that are defined in the chemical component dictionary. The Link column lists molecule types, if any, to which the group is linked. The Z score for a bond length

(or angle) is the number of standard deviations the observed value is removed from the expected value. A bond length (or angle) with $|Z| > 2$ is considered an outlier worth inspection. RMSZ is the root-mean-square of all Z scores of the bond lengths (or angles).

Mol	Type	Chain	Res	Link	Bond lengths			Bond angles		
					Counts	RMSZ	$\# Z > 2$	Counts	RMSZ	$\# Z > 2$
2	NAD	A	550	4	42,48,48	1.35	6 (14%)	46,73,73	1.86	9 (19%)
3	K9P	A	551	1	23,24,24	0.36	0	23,34,34	0.77	1 (4%)
2	NAD	B	550	4	42,48,48	1.11	3 (7%)	46,73,73	2.00	8 (17%)
3	K9P	B	551	1	23,24,24	0.53	0	23,34,34	0.62	0

In the following table, the Chirals column lists the number of chiral outliers, the number of chiral centers analysed, the number of these observed in the model and the number defined in the chemical component dictionary. Similar counts are reported in the Torsion and Rings columns. '-' means no outliers of that kind were identified.

Mol	Type	Chain	Res	Link	Chirals	Torsions	Rings
2	NAD	A	550	4	-	0/22/62/62	0/5/5/5
3	K9P	A	551	1	-	0/9/21/21	0/3/3/3
2	NAD	B	550	4	-	0/22/62/62	0/5/5/5
3	K9P	B	551	1	-	0/9/21/21	0/3/3/3

All (9) bond length outliers are listed below:

Mol	Chain	Res	Type	Atoms	Z	Observed(Å)	Ideal(Å)
2	A	550	NAD	C7N-N7N	-4.12	1.24	1.33
2	A	550	NAD	C2N-N1N	-2.14	1.31	1.35
2	A	550	NAD	O4D-C1D	2.09	1.44	1.41
2	A	550	NAD	PN-O5D	2.10	1.68	1.59
2	A	550	NAD	C2A-N3A	2.46	1.36	1.32
2	B	550	NAD	O4D-C1D	2.46	1.44	1.41
2	B	550	NAD	C5A-C4A	2.57	1.46	1.40
2	A	550	NAD	C2D-C1D	2.62	1.57	1.53
2	B	550	NAD	C2A-N3A	3.13	1.37	1.32

All (18) bond angle outliers are listed below:

Mol	Chain	Res	Type	Atoms	Z	Observed(°)	Ideal(°)
2	B	550	NAD	N3A-C2A-N1A	-7.40	123.06	128.87
2	A	550	NAD	C6N-C5N-C4N	-4.25	112.99	119.43
2	A	550	NAD	N3A-C2A-N1A	-3.78	125.90	128.87
2	B	550	NAD	C1B-N9A-C4A	-3.42	122.98	126.81
2	B	550	NAD	C6N-C5N-C4N	-2.81	115.16	119.43
2	B	550	NAD	C3N-C2N-N1N	-2.49	117.49	120.34

Continued on next page...

Continued from previous page...

Mol	Chain	Res	Type	Atoms	Z	Observed(°)	Ideal(°)
3	A	551	K9P	C10-C9-C18	-2.40	118.65	121.04
2	A	550	NAD	C4N-C3N-C7N	-2.25	115.14	121.11
2	A	550	NAD	C2D-C3D-C4D	-2.14	98.27	102.64
2	A	550	NAD	O2N-PN-O1N	2.57	125.94	112.56
2	B	550	NAD	O2N-PN-O1N	2.63	126.25	112.56
2	A	550	NAD	C4D-O4D-C1D	2.68	112.49	109.64
2	A	550	NAD	O2B-C2B-C3B	2.73	120.69	111.86
2	A	550	NAD	C5N-C6N-N1N	2.77	125.24	120.46
2	B	550	NAD	C4D-O4D-C1D	2.86	112.68	109.64
2	B	550	NAD	O7N-C7N-C3N	4.01	124.04	119.60
2	B	550	NAD	O4D-C1D-N1N	4.75	113.24	108.10
2	A	550	NAD	O4D-C1D-N1N	6.85	115.50	108.10

There are no chirality outliers.

There are no torsion outliers.

There are no ring outliers.

3 monomers are involved in 10 short contacts:

Mol	Chain	Res	Type	Clashes	Symm-Clashes
2	A	550	NAD	5	0
2	B	550	NAD	3	0
3	B	551	K9P	2	0

5.7 Other polymers [i](#)

There are no such residues in this entry.

5.8 Polymer linkage issues [i](#)

There are no chain breaks in this entry.

6 Fit of model and data [i](#)

6.1 Protein, DNA and RNA chains [i](#)

In the following table, the column labelled ‘#RSRZ> 2’ contains the number (and percentage) of RSRZ outliers, followed by percent RSRZ outliers for the chain as percentile scores relative to all X-ray entries and entries of similar resolution. The OWAB column contains the minimum, median, 95th percentile and maximum values of the occupancy-weighted average B-factor per residue. The column labelled ‘Q< 0.9’ lists the number of (and percentage) of residues with an average occupancy less than 0.9.

Mol	Chain	Analysed	<RSRZ>	#RSRZ>2	OWAB(Å ²)	Q<0.9
1	A	494/501 (98%)	-0.27	5 (1%) 84 86	16, 23, 38, 71	0
1	B	494/501 (98%)	-0.14	10 (2%) 68 71	16, 23, 39, 66	0
All	All	988/1002 (98%)	-0.20	15 (1%) 76 79	16, 23, 38, 71	0

All (15) RSRZ outliers are listed below:

Mol	Chain	Res	Type	RSRZ
1	B	480[A]	TYR	8.9
1	A	480[A]	TYR	6.4
1	B	338	GLY	3.4
1	B	337	PRO	2.8
1	A	337	PRO	2.6
1	B	377	LYS	2.6
1	A	7	ASP	2.6
1	B	7	ASP	2.5
1	B	336	THR	2.5
1	B	483	HIS	2.4
1	B	8	VAL	2.3
1	A	144	ILE	2.2
1	A	13	THR	2.2
1	B	482	PHE	2.1
1	B	144	ILE	2.0

6.2 Non-standard residues in protein, DNA, RNA chains [i](#)

There are no non-standard protein/DNA/RNA residues in this entry.

6.3 Carbohydrates [i](#)

There are no carbohydrates in this entry.

6.4 Ligands [i](#)

In the following table, the Atoms column lists the number of modelled atoms in the group and the number defined in the chemical component dictionary. LLDF column lists the quality of electron density of the group with respect to its neighbouring residues in protein, DNA or RNA chains. The B-factors column lists the minimum, median, 95th percentile and maximum values of B factors of atoms in the group. The column labelled 'Q< 0.9' lists the number of atoms with occupancy less than 0.9.

Mol	Type	Chain	Res	Atoms	RSCC	RSR	LLDF	B-factors(Å ²)	Q<0.9
3	K9P	A	551	22/22	0.87	0.15	2.02	35,41,54,59	0
3	K9P	B	551	22/22	0.87	0.15	1.52	29,41,57,61	0
2	NAD	A	550	44/44	0.96	0.08	-0.25	17,26,31,38	0
2	NAD	B	550	44/44	0.96	0.08	-0.78	18,27,35,37	0
4	MG	B	552	1/1	0.98	0.08	-	40,40,40,40	0
4	MG	A	552	1/1	0.89	0.11	-	45,45,45,45	0

6.5 Other polymers [i](#)

There are no such residues in this entry.