



Full wwPDB X-ray Structure Validation Report ⓘ

Feb 19, 2016 – 09:31 PM GMT

PDB ID : 5ADE
Title : Structure of rat neuronal nitric oxide synthase M336V D597N mutant heme domain in complex with 7-((4-Chloro-3-((methylamino)methyl) phenoxy)methyl)quinolin-2-amine
Authors : Li, H.; Poulos, T.L.
Deposited on : 2015-08-20
Resolution : 2.10 Å(reported)

This is a Full wwPDB X-ray Structure Validation Report for a publicly released PDB entry.
We welcome your comments at validation@mail.wwpdb.org
A user guide is available at
<http://wwpdb.org/validation/2016/XrayValidationReportHelp>
with specific help available everywhere you see the ⓘ symbol.

The following versions of software and data (see [references ⓘ](#)) were used in the production of this report:

MolProbity : 4.02b-467
Mogul : 1.7.1 (RC1), CSD as537be (2016)
Xtriage (Phenix) : 1.9-1692
EDS : rb-20026982
Percentile statistics : 20151230.v01 (using entries in the PDB archive December 30th 2015)
Refmac : 5.8.0135
CCP4 : 6.5.0
Ideal geometry (proteins) : Engh & Huber (2001)
Ideal geometry (DNA, RNA) : Parkinson et al. (1996)
Validation Pipeline (wwPDB-VP) : rb-20026982

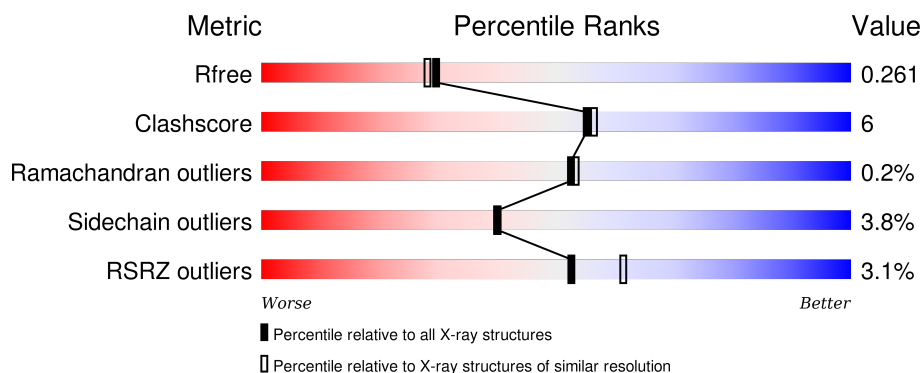
1 Overall quality at a glance

The following experimental techniques were used to determine the structure:

X-RAY DIFFRACTION

The reported resolution of this entry is 2.10 Å.

Percentile scores (ranging between 0-100) for global validation metrics of the entry are shown in the following graphic. The table shows the number of entries on which the scores are based.



Metric	Whole archive (#Entries)	Similar resolution (#Entries, resolution range(Å))
R_{free}	91344	3939 (2.10-2.10)
Clashscore	102246	4460 (2.10-2.10)
Ramachandran outliers	100387	4413 (2.10-2.10)
Sidechain outliers	100360	4414 (2.10-2.10)
RSRZ outliers	91569	3948 (2.10-2.10)

The table below summarises the geometric issues observed across the polymeric chains and their fit to the electron density. The red, orange, yellow and green segments on the lower bar indicate the fraction of residues that contain outliers for ≥ 3 , 2, 1 and 0 types of geometric quality criteria. A grey segment represents the fraction of residues that are not modelled. The numeric value for each fraction is indicated below the corresponding segment, with a dot representing fractions $\leq 5\%$. The upper red bar (where present) indicates the fraction of residues that have poor fit to the electron density. The numeric value is given above the bar.

Mol	Chain	Length	Quality of chain
1	A	422	
1	B	422	

The following table lists non-polymeric compounds, carbohydrate monomers and non-standard residues in protein, DNA, RNA chains that are outliers for geometric or electron-density-fit criteria:

Mol	Type	Chain	Res	Chirality	Geometry	Clashes	Electron density
3	H4B	A	760	-	-	-	X
3	H4B	B	760	-	-	-	X
4	XEB	B	800	-	-	-	X
5	ACT	A	860	-	-	-	X
5	ACT	B	860	-	-	-	X

2 Entry composition [i](#)

There are 7 unique types of molecules in this entry. The entry contains 7089 atoms, of which 0 are hydrogens and 0 are deuteriums.

In the tables below, the ZeroOcc column contains the number of atoms modelled with zero occupancy, the AltConf column contains the number of residues with at least one atom in alternate conformation and the Trace column contains the number of residues modelled with at most 2 atoms.

- Molecule 1 is a protein called NITRIC OXIDE SYNTHASE, BRAIN.

Mol	Chain	Residues	Atoms					ZeroOcc	AltConf	Trace
1	A	408	Total	C	N	O	S	0	2	1
			3322	2127	568	606	21			
1	B	411	Total	C	N	O	S	0	3	0
			3356	2148	575	613	20			

There are 4 discrepancies between the modelled and reference sequences:

Chain	Residue	Modelled	Actual	Comment	Reference
A	336	VAL	MET	ENGINEERED MUTATION	UNP P29476
A	597	ASN	ASP	ENGINEERED MUTATION	UNP P29476
B	336	VAL	MET	ENGINEERED MUTATION	UNP P29476
B	597	ASN	ASP	ENGINEERED MUTATION	UNP P29476

- Molecule 2 is PROTOPORPHYRIN IX CONTAINING FE (three-letter code: HEM) (formula: $C_{34}H_{32}FeN_4O_4$).



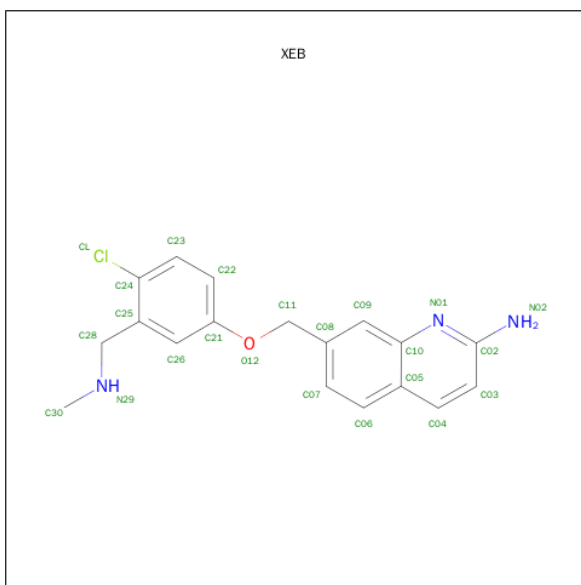
Mol	Chain	Residues	Atoms				ZeroOcc	AltConf
2	A	1	Total	C	Fe	N	O	
			43	34	1	4	4	
2	B	1	Total	C	Fe	N	O	
			43	34	1	4	4	

- Molecule 3 is 5,6,7,8-TETRAHYDROBIOPTERIN (three-letter code: H4B) (formula: $C_9H_{15}N_5O_3$).



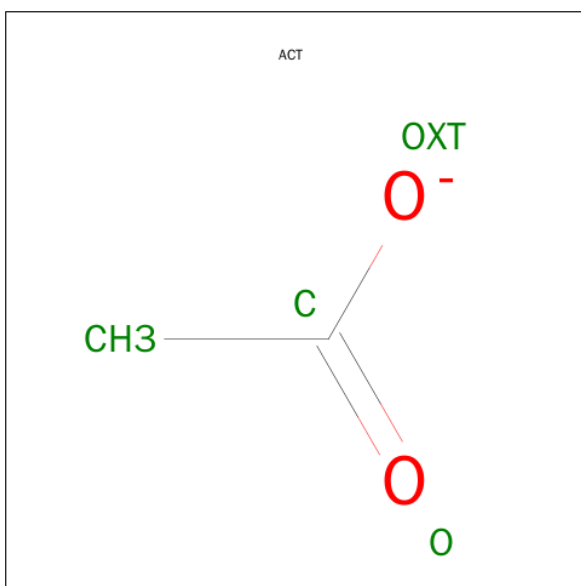
Mol	Chain	Residues	Atoms				ZeroOcc	AltConf
3	A	1	Total	C	N	O		
			17	9	5	3		
3	B	1	Total	C	N	O		
			17	9	5	3		

- Molecule 4 is 7-[[4-CHLORANYL-3-(METHYLAMINOMETHYL)PHENOXY]METHYL]QUINOLIN-2-AMINE (three-letter code: XEB) (formula: $C_{18}H_{18}ClN_3O$).



Mol	Chain	Residues	Atoms					ZeroOcc	AltConf
4	A	1	Total 23	C 18	Cl 1	N 3	O 1	0	0
4	B	1	Total 23	C 18	Cl 1	N 3	O 1	0	0

- Molecule 5 is ACETATE ION (three-letter code: ACT) (formula: $\text{C}_2\text{H}_3\text{O}_2$).



Mol	Chain	Residues	Atoms	ZeroOcc	AltConf
5	A	1	Total C O 4 2 2	0	0
5	B	1	Total C O 4 2 2	0	0

- Molecule 6 is ZINC ION (three-letter code: ZN) (formula: Zn).

Mol	Chain	Residues	Atoms		ZeroOcc	AltConf
6	A	1	Total 1	Zn 1	0	0

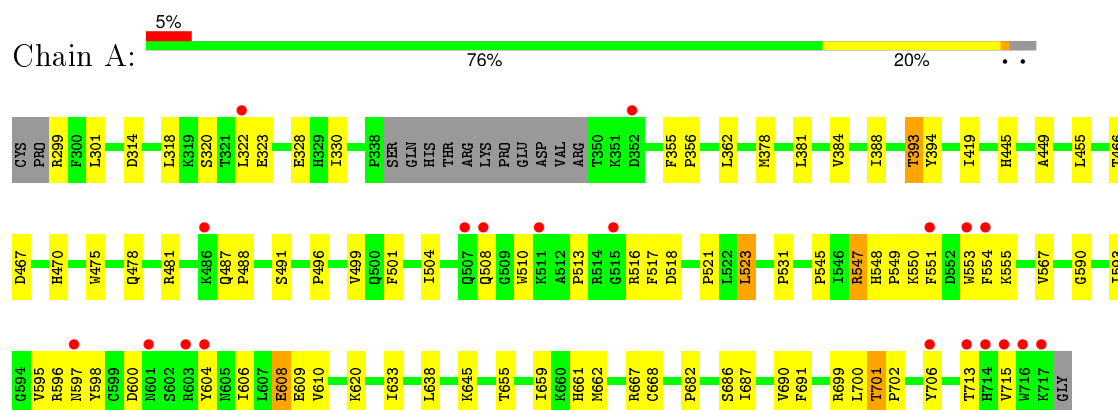
- Molecule 7 is water.

Mol	Chain	Residues	Atoms		ZeroOcc	AltConf
7	A	113	Total 113	O 113	0	0
7	B	123	Total 123	O 123	0	0

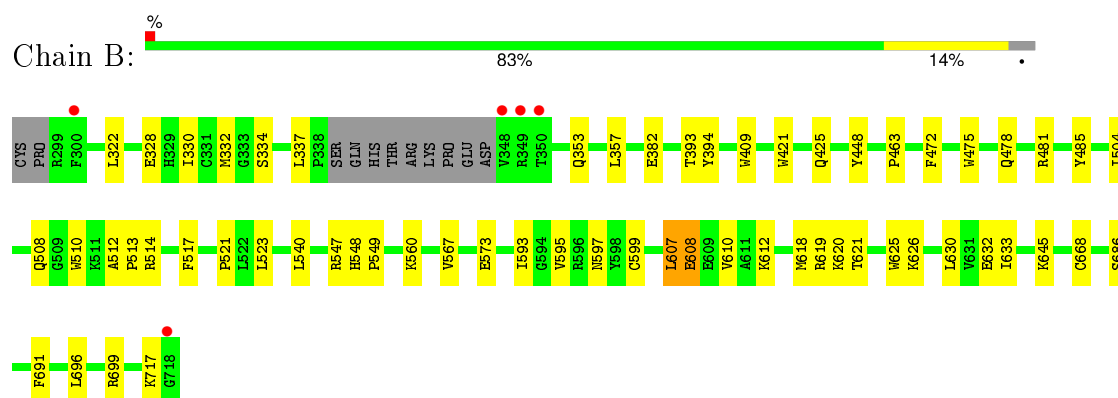
3 Residue-property plots [i](#)

These plots are drawn for all protein, RNA and DNA chains in the entry. The first graphic for a chain summarises the proportions of errors displayed in the second graphic. The second graphic shows the sequence view annotated by issues in geometry and electron density. Residues are color-coded according to the number of geometric quality criteria for which they contain at least one outlier: green = 0, yellow = 1, orange = 2 and red = 3 or more. A red dot above a residue indicates a poor fit to the electron density ($RSRZ > 2$). Stretches of 2 or more consecutive residues without any outlier are shown as a green connector. Residues present in the sample, but not in the model, are shown in grey.

• Molecule 1: NITRIC OXIDE SYNTHASE, BRAIN



• Molecule 1: NITRIC OXIDE SYNTHASE, BRAIN



4 Data and refinement statistics

Property	Value	Source
Space group	P 21 21 21	Depositor
Cell constants a, b, c, α , β , γ	51.56Å 111.56Å 164.24Å 90.00° 90.00° 90.00°	Depositor
Resolution (Å)	55.78 – 2.10 55.78 – 2.10	Depositor EDS
% Data completeness (in resolution range)	64.0 (55.78-2.10) 64.0 (55.78-2.10)	Depositor EDS
R_{merge}	0.10	Depositor
R_{sym}	(Not available)	Depositor
$\langle I/\sigma(I) \rangle$ ¹	4.24 (at 2.10Å)	Xtriage
Refinement program	PHENIX (PHENIX.REFINE)	Depositor
R, R_{free}	0.183 , 0.248 0.194 , 0.261	Depositor DCC
R_{free} test set	1796 reflections (5.25%)	DCC
Wilson B-factor (Å ²)	24.3	Xtriage
Anisotropy	0.166	Xtriage
Bulk solvent k_{sol} (e/Å ³), B_{sol} (Å ²)	0.35 , 56.9	EDS
Estimated twinning fraction	No twinning to report.	Xtriage
L-test for twinning ²	$\langle L \rangle = 0.48$, $\langle L^2 \rangle = 0.32$	Xtriage
Outliers	1 of 36019 reflections (0.003%)	Xtriage
F_o, F_c correlation	0.94	EDS
Total number of atoms	7089	wwPDB-VP
Average B, all atoms (Å ²)	52.0	wwPDB-VP

Xtriage's analysis on translational NCS is as follows: *The largest off-origin peak in the Patterson function is 5.53% of the height of the origin peak. No significant pseudotranslation is detected.*

¹Intensities estimated from amplitudes.

²Theoretical values of $\langle |L| \rangle$, $\langle L^2 \rangle$ for acentric reflections are 0.5, 0.375 respectively for untwinned datasets, and 0.333, 0.2 for perfectly twinned datasets.

5 Model quality ⓘ

5.1 Standard geometry ⓘ

Bond lengths and bond angles in the following residue types are not validated in this section: HEM, ZN, H4B, XEB, ACT

The Z score for a bond length (or angle) is the number of standard deviations the observed value is removed from the expected value. A bond length (or angle) with $|Z| > 5$ is considered an outlier worth inspection. RMSZ is the root-mean-square of all Z scores of the bond lengths (or angles).

Mol	Chain	Bond lengths		Bond angles	
		RMSZ	# Z >5	RMSZ	# Z >5
1	A	0.38	0/3421	0.55	0/4643
1	B	0.40	0/3458	0.56	0/4689
All	All	0.39	0/6879	0.56	0/9332

There are no bond length outliers.

There are no bond angle outliers.

There are no chirality outliers.

There are no planarity outliers.

5.2 Too-close contacts ⓘ

In the following table, the Non-H and H(model) columns list the number of non-hydrogen atoms and hydrogen atoms in the chain respectively. The H(added) column lists the number of hydrogen atoms added and optimized by MolProbity. The Clashes column lists the number of clashes within the asymmetric unit, whereas Symm-Clashes lists symmetry related clashes.

Mol	Chain	Non-H	H(model)	H(added)	Clashes	Symm-Clashes
1	A	3322	0	3234	47	0
1	B	3356	0	3277	33	0
2	A	43	0	30	3	0
2	B	43	0	30	4	0
3	A	17	0	15	0	0
3	B	17	0	15	0	0
4	A	23	0	18	3	0
4	B	23	0	18	5	0
5	A	4	0	3	0	0
5	B	4	0	3	0	0
6	A	1	0	0	0	0

Continued on next page...

Continued from previous page...

Mol	Chain	Non-H	H(model)	H(added)	Clashes	Symm-Clashes
7	A	113	0	0	1	0
7	B	123	0	0	0	0
All	All	7089	0	6643	85	0

The all-atom clashscore is defined as the number of clashes found per 1000 atoms (including hydrogen atoms). The all-atom clashscore for this structure is 6.

All (85) close contacts within the same asymmetric unit are listed below, sorted by their clash magnitude.

Atom-1	Atom-2	Interatomic distance (Å)	Clash overlap (Å)
4:B:800:XEB:N29	4:B:800:XEB:CL	2.47	0.83
4:A:800:XEB:N29	4:A:800:XEB:CL	2.53	0.78
1:B:593:ILE:HA	1:B:597:ASN:HB2	1.68	0.76
2:B:750:HEM:HBC2	2:B:750:HEM:HMC2	1.69	0.73
2:B:750:HEM:HHC	2:B:750:HEM:HBB2	1.70	0.71
1:A:330:ILE:HD11	1:B:696:LEU:HD22	1.79	0.65
2:A:750:HEM:HBB2	2:A:750:HEM:HHC	1.79	0.64
1:A:523:LEU:HD22	1:A:531:PRO:HB2	1.82	0.62
1:A:393:THR:OG1	1:A:394:TYR:N	2.31	0.61
1:A:501:PHE:HA	1:A:504:ILE:HD12	1.84	0.59
1:A:598:TYR:HA	1:A:604:TYR:HB2	1.84	0.58
1:A:478:GLN:HB2	1:A:481:ARG:HG3	1.86	0.58
1:B:322:LEU:HD13	1:B:699:ARG:HH21	1.70	0.57
1:B:607:LEU:HD13	1:B:626:LYS:HG2	1.86	0.56
1:B:393:THR:OG1	1:B:394:TYR:N	2.39	0.55
1:A:596:ARG:NH2	1:A:600:ASP:OD2	2.34	0.55
1:B:567:VAL:HG21	4:B:800:XEB:C07	2.36	0.55
1:A:554:PHE:HB3	7:A:2074:HOH:O	2.08	0.54
1:A:567:VAL:HG21	4:A:800:XEB:C07	2.39	0.53
1:B:593:ILE:HA	1:B:597:ASN:HD22	1.75	0.52
2:B:750:HEM:O1D	4:B:800:XEB:H26	2.09	0.52
2:A:750:HEM:HBA2	4:A:800:XEB:H11	1.92	0.52
1:B:595:VAL:HG13	1:B:630:LEU:HD11	1.92	0.52
1:B:620:LYS:HD3	1:B:621:THR:H	1.74	0.52
1:A:299:ARG:HG2	1:A:318:LEU:HD11	1.92	0.51
1:B:504:ILE:O	1:B:508:GLN:HG2	2.10	0.51
1:A:320:SER:HA	1:A:700:LEU:HD23	1.94	0.50
1:B:463:PRO:HG2	1:B:472:PHE:CZ	2.48	0.49
1:A:659:ILE:HD11	1:A:690:VAL:HA	1.94	0.49
1:A:667:ARG:NH1	1:A:668[A]:CYS:SG	2.86	0.48
2:B:750:HEM:CBA	4:B:800:XEB:H11	2.44	0.47

Continued on next page...

Continued from previous page...

Atom-1	Atom-2	Interatomic distance (Å)	Clash overlap (Å)
1:A:449:ALA:O	1:A:455:LEU:HA	2.15	0.47
1:A:419:ILE:HG13	1:A:661:HIS:HB2	1.96	0.47
1:B:610:VAL:HG21	1:B:633:ILE:HD11	1.97	0.47
1:A:548:HIS:CG	1:A:549:PRO:HD2	2.49	0.47
1:A:610:VAL:HG21	1:A:633:ILE:HD11	1.96	0.47
1:A:545:PRO:HG2	1:A:547:ARG:NH1	2.29	0.46
1:A:595:VAL:HG11	1:A:682:PRO:HB2	1.97	0.46
1:B:548:HIS:CG	1:B:549:PRO:HD2	2.51	0.45
1:A:496:PRO:HA	1:A:499:VAL:HG23	1.98	0.45
1:A:686:SER:HA	1:A:691:PHE:CG	2.51	0.45
1:A:301:LEU:O	1:A:314:ASP:N	2.40	0.45
1:B:608:GLU:HG2	1:B:608:GLU:H	1.34	0.45
1:B:425:GLN:HG2	1:B:448:TYR:CZ	2.51	0.45
1:A:475:TRP:CZ2	1:A:531:PRO:HG3	2.51	0.45
1:A:513:PRO:HG2	1:A:518:ASP:CG	2.38	0.44
1:B:485:TYR:CZ	1:B:514:ARG:HA	2.52	0.44
1:A:466:THR:OG1	1:A:467:ASP:N	2.50	0.44
1:B:686:SER:HA	1:B:691:PHE:CG	2.53	0.44
1:A:487:GLN:HB3	1:A:488:PRO:HD2	2.00	0.44
1:A:620:LYS:HB2	1:A:620:LYS:NZ	2.33	0.44
1:B:409:TRP:CE3	1:B:421:TRP:HA	2.53	0.43
1:A:706:TYR:OH	2:A:750:HEM:O1D	2.32	0.43
1:B:475:TRP:HB2	1:B:523:LEU:HB3	2.00	0.43
1:B:517:PHE:CB	1:B:560:LYS:HE2	2.49	0.43
1:B:517:PHE:HB3	1:B:560:LYS:HE2	2.01	0.43
1:A:701:THR:HG23	1:A:702:PRO:HA	2.01	0.43
1:A:323:GLU:HG2	1:B:328:GLU:HB3	2.00	0.43
1:A:322:LEU:HB3	1:A:699:ARG:HE	1.84	0.42
1:A:504:ILE:O	1:A:508:GLN:HG2	2.20	0.42
1:A:687:ILE:HD12	1:B:626:LYS:HB3	2.01	0.42
1:B:510:TRP:CE2	1:B:521:PRO:HD3	2.54	0.42
1:A:355:PHE:N	1:A:356:PRO:HD2	2.35	0.42
1:A:355:PHE:HD1	1:A:388:ILE:HD12	1.85	0.41
1:A:381:LEU:HA	1:A:381:LEU:HD12	1.91	0.41
1:B:548:HIS:NE2	1:B:632:GLU:OE1	2.42	0.41
1:A:551:PHE:HB3	1:A:553:TRP:NE1	2.35	0.41
1:B:620:LYS:HD3	1:B:621:THR:N	2.35	0.41
1:B:512:ALA:HA	1:B:513:PRO:HD2	1.90	0.41
1:A:516:ARG:HB3	1:A:517:PHE:CD1	2.55	0.41
1:B:478:GLN:HB2	1:B:481:ARG:HG3	2.03	0.41
1:B:357:LEU:HA	1:B:357:LEU:HD23	1.93	0.41

Continued on next page...

Continued from previous page...

Atom-1	Atom-2	Interatomic distance (Å)	Clash overlap (Å)
1:B:599:CYS:SG	1:B:633:ILE:HD13	2.61	0.41
1:A:593:ILE:O	1:A:597:ASN:HB2	2.21	0.41
1:B:337:LEU:HD21	4:B:800:XEB:H30B	2.03	0.41
1:A:590:GLY:HA3	1:A:638:LEU:HD21	2.03	0.41
1:A:362:LEU:HD11	1:A:384:VAL:HG21	2.02	0.41
1:A:655:THR:O	1:A:659:ILE:HG12	2.21	0.41
1:A:606:ILE:HA	1:A:609:GLU:OE1	2.21	0.41
1:A:445:HIS:C	1:A:445:HIS:CD2	2.94	0.40
1:A:475:TRP:HB2	1:A:523:LEU:HB3	2.03	0.40
1:A:608:GLU:H	1:A:608:GLU:HG2	1.30	0.40
1:B:485:TYR:CE2	1:B:514:ARG:HA	2.56	0.40
1:A:510:TRP:CE2	1:A:521:PRO:HD3	2.57	0.40
1:B:618:MET:HA	1:B:625:TRP:CD1	2.56	0.40

There are no symmetry-related clashes.

5.3 Torsion angles [i](#)

5.3.1 Protein backbone [i](#)

In the following table, the Percentiles column shows the percent Ramachandran outliers of the chain as a percentile score with respect to all X-ray entries followed by that with respect to entries of similar resolution.

The Analysed column shows the number of residues for which the backbone conformation was analysed, and the total number of residues.

Mol	Chain	Analysed	Favoured	Allowed	Outliers	Percentiles	
1	A	406/422 (96%)	383 (94%)	22 (5%)	1 (0%)	52	53
1	B	410/422 (97%)	393 (96%)	16 (4%)	1 (0%)	52	53
All	All	816/844 (97%)	776 (95%)	38 (5%)	2 (0%)	52	53

All (2) Ramachandran outliers are listed below:

Mol	Chain	Res	Type
1	A	491	SER
1	B	619	ARG

5.3.2 Protein sidechains ⓘ

In the following table, the Percentiles column shows the percent sidechain outliers of the chain as a percentile score with respect to all X-ray entries followed by that with respect to entries of similar resolution.

The Analysed column shows the number of residues for which the sidechain conformation was analysed, and the total number of residues.

Mol	Chain	Analysed	Rotameric	Outliers	Percentiles	
1	A	365/377 (97%)	351 (96%)	14 (4%)	40	40
1	B	369/377 (98%)	355 (96%)	14 (4%)	40	40
All	All	734/754 (97%)	706 (96%)	28 (4%)	40	40

All (28) residues with a non-rotameric sidechain are listed below:

Mol	Chain	Res	Type
1	A	328	GLU
1	A	378	MET
1	A	393	THR
1	A	470	HIS
1	A	523	LEU
1	A	547	ARG
1	A	550	LYS
1	A	555	LYS
1	A	608	GLU
1	A	645	LYS
1	A	662	MET
1	A	701	THR
1	A	713	THR
1	A	715	VAL
1	B	330	ILE
1	B	332	MET
1	B	334	SER
1	B	353	GLN
1	B	382	GLU
1	B	540	LEU
1	B	547	ARG
1	B	573	GLU
1	B	607	LEU
1	B	608	GLU
1	B	612	LYS
1	B	645	LYS
1	B	668	CYS

Continued on next page...

Continued from previous page...

Mol	Chain	Res	Type
1	B	717	LYS

Some sidechains can be flipped to improve hydrogen bonding and reduce clashes. All (1) such sidechains are listed below:

Mol	Chain	Res	Type
1	B	628	GLN

5.3.3 RNA ⓘ

There are no RNA molecules in this entry.

5.4 Non-standard residues in protein, DNA, RNA chains ⓘ

There are no non-standard protein/DNA/RNA residues in this entry.

5.5 Carbohydrates ⓘ

There are no carbohydrates in this entry.

5.6 Ligand geometry ⓘ

Of 9 ligands modelled in this entry, 1 is monoatomic - leaving 8 for Mogul analysis.

In the following table, the Counts columns list the number of bonds (or angles) for which Mogul statistics could be retrieved, the number of bonds (or angles) that are observed in the model and the number of bonds (or angles) that are defined in the chemical component dictionary. The Link column lists molecule types, if any, to which the group is linked. The Z score for a bond length (or angle) is the number of standard deviations the observed value is removed from the expected value. A bond length (or angle) with $|Z| > 2$ is considered an outlier worth inspection. RMSZ is the root-mean-square of all Z scores of the bond lengths (or angles).

Mol	Type	Chain	Res	Link	Bond lengths			Bond angles		
					Counts	RMSZ	# Z > 2	Counts	RMSZ	# Z > 2
2	HEM	A	750	1	24,50,50	2.23	6 (25%)	16,82,82	2.18	2 (12%)
3	H4B	A	760	-	15,18,18	0.97	1 (6%)	12,26,26	2.53	7 (58%)
4	XEB	A	800	-	25,25,25	1.17	4 (16%)	34,34,34	1.51	6 (17%)
5	ACT	A	860	-	0,3,3	0.00	-	0,3,3	0.00	-
2	HEM	B	750	1	24,50,50	2.29	7 (29%)	16,82,82	1.87	2 (12%)
3	H4B	B	760	-	15,18,18	0.92	0	12,26,26	2.44	6 (50%)

Mol	Type	Chain	Res	Link	Bond lengths			Bond angles		
					Counts	RMSZ	# Z > 2	Counts	RMSZ	# Z > 2
4	XEB	B	800	-	25,25,25	1.06	2 (8%)	34,34,34	1.31	5 (14%)
5	ACT	B	860	-	0,3,3	0.00	-	0,3,3	0.00	-

In the following table, the Chirals column lists the number of chiral outliers, the number of chiral centers analysed, the number of these observed in the model and the number defined in the chemical component dictionary. Similar counts are reported in the Torsion and Rings columns. '-' means no outliers of that kind were identified.

Mol	Type	Chain	Res	Link	Chirals	Torsions	Rings
2	HEM	A	750	1	-	0/6/54/54	0/0/8/8
3	H4B	A	760	-	-	0/8/17/17	0/2/2/2
4	XEB	A	800	-	-	0/7/8/8	0/3/3/3
5	ACT	A	860	-	-	0/0/0/0	0/0/0/0
2	HEM	B	750	1	-	0/6/54/54	0/0/8/8
3	H4B	B	760	-	-	0/8/17/17	0/2/2/2
4	XEB	B	800	-	-	0/7/8/8	0/3/3/3
5	ACT	B	860	-	-	0/0/0/0	0/0/0/0

All (20) bond length outliers are listed below:

Mol	Chain	Res	Type	Atoms	Z	Observed(Å)	Ideal(Å)
2	A	750	HEM	C3B-C2B	-4.55	1.34	1.40
2	B	750	HEM	C3B-C2B	-4.51	1.34	1.40
2	B	750	HEM	C3C-C2C	-4.34	1.34	1.40
2	A	750	HEM	C3C-C2C	-4.03	1.35	1.40
4	A	800	XEB	C05-C10	-2.13	1.38	1.42
2	B	750	HEM	C1C-NC	2.02	1.39	1.36
4	A	800	XEB	C06-C07	2.02	1.40	1.36
4	B	800	XEB	C06-C07	2.11	1.41	1.36
3	A	760	H4B	C4-N3	2.13	1.36	1.33
4	A	800	XEB	C02-N01	2.20	1.35	1.33
2	B	750	HEM	C4D-ND	2.41	1.40	1.36
2	A	750	HEM	C4D-ND	2.53	1.40	1.36
4	A	800	XEB	C24-CL	2.95	1.81	1.73
4	B	800	XEB	C24-CL	3.03	1.81	1.73
2	B	750	HEM	C3B-CAB	3.45	1.55	1.47
2	A	750	HEM	C3C-CAC	3.46	1.54	1.47
2	B	750	HEM	C3C-CAC	3.50	1.55	1.47
2	A	750	HEM	C3B-CAB	3.61	1.55	1.47
2	B	750	HEM	C3D-C2D	5.41	1.53	1.37
2	A	750	HEM	C3D-C2D	5.49	1.54	1.37

All (28) bond angle outliers are listed below:

Mol	Chain	Res	Type	Atoms	Z	Observed(°)	Ideal(°)
2	A	750	HEM	CAD-CBD-CGD	-5.61	101.86	112.78
2	B	750	HEM	CAD-CBD-CGD	-5.48	102.12	112.78
2	A	750	HEM	CBA-CAA-C2A	-5.25	103.27	112.49
3	A	760	H4B	N3-C2-N1	-3.45	119.87	125.51
3	B	760	H4B	N3-C2-N1	-3.31	120.10	125.51
3	A	760	H4B	O9-C9-C6	-2.73	104.24	109.59
2	B	750	HEM	CAA-C2A-C3A	-2.63	121.50	129.00
4	A	800	XEB	C03-C02-N01	-2.52	119.57	122.22
4	B	800	XEB	C03-C02-N01	-2.50	119.58	122.22
4	B	800	XEB	C11-C08-C09	-2.37	115.84	121.22
4	A	800	XEB	C11-C08-C09	-2.16	116.31	121.22
4	B	800	XEB	C23-C24-C25	-2.15	118.63	122.18
4	A	800	XEB	C22-C21-C26	-2.06	117.71	120.56
4	A	800	XEB	C23-C24-C25	-2.03	118.81	122.18
3	B	760	H4B	N2-C2-N3	2.13	120.72	117.20
3	B	760	H4B	C4A-C8A-N8	2.45	120.86	118.26
3	B	760	H4B	C2-N1-C8A	2.61	120.49	114.63
3	A	760	H4B	C4A-C8A-N8	2.63	121.05	118.26
3	A	760	H4B	N2-C2-N3	2.64	121.56	117.20
3	A	760	H4B	C2-N1-C8A	2.90	121.13	114.63
4	B	800	XEB	C02-N01-C10	3.07	121.36	117.60
4	B	800	XEB	O12-C11-C08	3.24	118.40	109.17
3	A	760	H4B	C4-N3-C2	3.69	120.21	115.88
4	A	800	XEB	C02-N01-C10	3.93	122.41	117.60
3	B	760	H4B	C4-N3-C2	4.18	120.78	115.88
3	A	760	H4B	C4-C4A-C8A	4.38	118.47	114.61
4	A	800	XEB	O12-C11-C08	4.42	121.77	109.17
3	B	760	H4B	C4-C4A-C8A	4.64	118.69	114.61

There are no chirality outliers.

There are no torsion outliers.

There are no ring outliers.

4 monomers are involved in 12 short contacts:

Mol	Chain	Res	Type	Clashes	Symm-Clashes
2	A	750	HEM	3	0
4	A	800	XEB	3	0
2	B	750	HEM	4	0
4	B	800	XEB	5	0

5.7 Other polymers [i](#)

There are no such residues in this entry.

5.8 Polymer linkage issues [i](#)

There are no chain breaks in this entry.

6 Fit of model and data ⓘ

6.1 Protein, DNA and RNA chains ⓘ

In the following table, the column labelled ‘#RSRZ> 2’ contains the number (and percentage) of RSRZ outliers, followed by percent RSRZ outliers for the chain as percentile scores relative to all X-ray entries and entries of similar resolution. The OWAB column contains the minimum, median, 95th percentile and maximum values of the occupancy-weighted average B-factor per residue. The column labelled ‘Q< 0.9’ lists the number of (and percentage) of residues with an average occupancy less than 0.9.

Mol	Chain	Analysed	<RSRZ>	#RSRZ>2	OWAB(Å ²)	Q<0.9
1	A	408/422 (96%)	0.09	20 (4%) 33 42	21, 51, 100, 143	0
1	B	411/422 (97%)	-0.18	5 (1%) 81 85	19, 45, 84, 131	0
All	All	819/844 (97%)	-0.05	25 (3%) 52 61	19, 47, 98, 143	0

All (25) RSRZ outliers are listed below:

Mol	Chain	Res	Type	RSRZ
1	A	717	LYS	10.6
1	A	716	TRP	5.1
1	A	715	VAL	4.8
1	B	718	GLY	4.0
1	B	350	THR	3.8
1	A	604	TYR	3.7
1	A	515	GLY	3.1
1	B	348	VAL	2.9
1	A	352	ASP	2.9
1	B	300	PHE	2.8
1	A	507	GLN	2.6
1	A	713	THR	2.5
1	A	597	ASN	2.4
1	A	714	HIS	2.4
1	A	551	PHE	2.4
1	A	603	ARG	2.3
1	A	601	ASN	2.2
1	A	508	GLN	2.2
1	B	349	ARG	2.2
1	A	554	PHE	2.2
1	A	511	LYS	2.1
1	A	553	TRP	2.1
1	A	322	LEU	2.1
1	A	486	LYS	2.1

Continued on next page...

Continued from previous page...

Mol	Chain	Res	Type	RSRZ
1	A	706	TYR	2.0

6.2 Non-standard residues in protein, DNA, RNA chains [i](#)

There are no non-standard protein/DNA/RNA residues in this entry.

6.3 Carbohydrates [i](#)

There are no carbohydrates in this entry.

6.4 Ligands [i](#)

In the following table, the Atoms column lists the number of modelled atoms in the group and the number defined in the chemical component dictionary. LLDF column lists the quality of electron density of the group with respect to its neighbouring residues in protein, DNA or RNA chains. The B-factors column lists the minimum, median, 95th percentile and maximum values of B factors of atoms in the group. The column labelled 'Q< 0.9' lists the number of atoms with occupancy less than 0.9.

Mol	Type	Chain	Res	Atoms	RSCC	RSR	LLDF	B-factors(Å ²)	Q<0.9
5	ACT	B	860	4/4	0.86	0.19	8.24	58,65,69,77	0
5	ACT	A	860	4/4	0.77	0.16	6.89	58,72,75,76	0
3	H4B	A	760	17/17	0.89	0.19	6.36	24,50,70,83	0
4	XEB	B	800	23/23	0.87	0.19	4.75	49,66,102,139	0
3	H4B	B	760	17/17	0.85	0.17	4.61	31,49,67,74	0
4	XEB	A	800	23/23	0.93	0.17	1.41	29,56,107,137	0
6	ZN	A	1717	1/1	1.00	0.10	0.26	42,42,42,42	0
2	HEM	A	750	43/43	0.98	0.11	0.19	17,35,55,69	0
2	HEM	B	750	43/43	0.98	0.10	-0.29	15,33,51,57	0

6.5 Other polymers [i](#)

There are no such residues in this entry.