



Full wwPDB X-ray Structure Validation Report ⓘ

Mar 23, 2016 – 02:34 PM EDT

PDB ID : 5AEE
Title : A bacterial protein structure in glycoside hydrolase family 31
Authors : Jin, Y.; Speciale, G.; Davies, G.J.; Williams, S.J.; Goddard-Borger, E.D.
Deposited on : 2015-08-28
Resolution : 1.85 Å(reported)

This is a Full wwPDB X-ray Structure Validation Report for a publicly released PDB entry.
We welcome your comments at validation@mail.wwpdb.org
A user guide is available at
<http://wwpdb.org/validation/2016/XrayValidationReportHelp>
with specific help available everywhere you see the ⓘ symbol.

The following versions of software and data (see [references ⓘ](#)) were used in the production of this report:

MolProbity : 4.02b-467
Mogul : 1.7.1 (RC1), CSD as537be (2016)
Xtriage (Phenix) : 1.9-1692
EDS : rb-20027107
Percentile statistics : 20151230.v01 (using entries in the PDB archive December 30th 2015)
Refmac : 5.8.0122
CCP4 : 6.5.0
Ideal geometry (proteins) : Engh & Huber (2001)
Ideal geometry (DNA, RNA) : Parkinson et al. (1996)
Validation Pipeline (wwPDB-VP) : rb-20027107

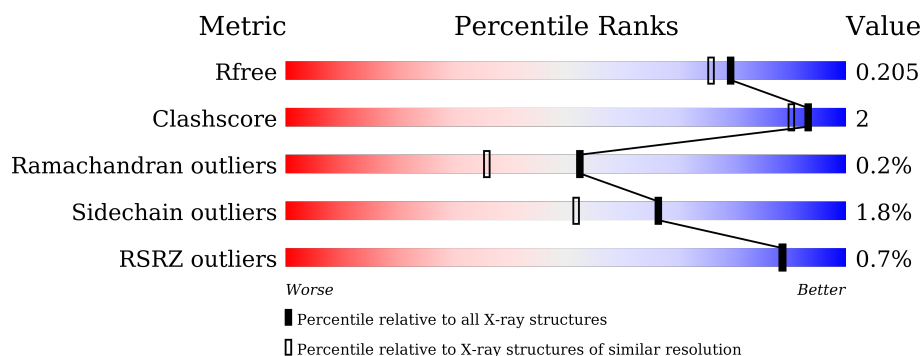
1 Overall quality at a glance

The following experimental techniques were used to determine the structure:

X-RAY DIFFRACTION

The reported resolution of this entry is 1.85 Å.

Percentile scores (ranging between 0-100) for global validation metrics of the entry are shown in the following graphic. The table shows the number of entries on which the scores are based.



Metric	Whole archive (#Entries)	Similar resolution (#Entries, resolution range(Å))
R_{free}	91344	1745 (1.86-1.86)
Clashscore	102246	1898 (1.86-1.86)
Ramachandran outliers	100387	1875 (1.86-1.86)
Sidechain outliers	100360	1875 (1.86-1.86)
RSRZ outliers	91569	1747 (1.86-1.86)

The table below summarises the geometric issues observed across the polymeric chains and their fit to the electron density. The red, orange, yellow and green segments on the lower bar indicate the fraction of residues that contain outliers for ≥ 3 , 2, 1 and 0 types of geometric quality criteria. A grey segment represents the fraction of residues that are not modelled. The numeric value for each fraction is indicated below the corresponding segment, with a dot representing fractions $\leq 5\%$. The upper red bar (where present) indicates the fraction of residues that have poor fit to the electron density. The numeric value is given above the bar.

Mol	Chain	Length	Quality of chain
1	A	686	<div> <div style="width: 100%; height: 10px; background: linear-gradient(to right, red, orange, yellow, green, grey);"></div> <div style="display: flex; justify-content: space-between; padding: 0 5px;"> % 90% 6% . </div> </div>
1	B	686	<div> <div style="width: 100%; height: 10px; background: linear-gradient(to right, red, orange, yellow, green, grey);"></div> <div style="display: flex; justify-content: space-between; padding: 0 5px;"> % 87% 10% . </div> </div>

The following table lists non-polymeric compounds, carbohydrate monomers and non-standard residues in protein, DNA, RNA chains that are outliers for geometric or electron-density-fit criteria:

Mol	Type	Chain	Res	Chirality	Geometry	Clashes	Electron density
4	MPD	B	1679	-	-	-	X

2 Entry composition

There are 6 unique types of molecules in this entry. The entry contains 11403 atoms, of which 0 are hydrogens and 0 are deuteriums.

In the tables below, the ZeroOcc column contains the number of atoms modelled with zero occupancy, the AltConf column contains the number of residues with at least one atom in alternate conformation and the Trace column contains the number of residues modelled with at most 2 atoms.

- Molecule 1 is a protein called ALPHA-GLUCOSIDASE YIHQ.

Mol	Chain	Residues	Atoms					ZeroOcc	AltConf	Trace
1	A	667	Total	C	N	O	S	0	0	0
			5365	3435	900	1002	28			
1	B	668	Total	C	N	O	S	0	0	0
			5376	3442	901	1005	28			

There are 18 discrepancies between the modelled and reference sequences:

Chain	Residue	Modelled	Actual	Comment	Reference
A	679	LEU	-	EXPRESSION TAG	UNP P32138
A	680	GLU	-	EXPRESSION TAG	UNP P32138
A	681	HIS	-	EXPRESSION TAG	UNP P32138
A	682	HIS	-	EXPRESSION TAG	UNP P32138
A	683	HIS	-	EXPRESSION TAG	UNP P32138
A	684	HIS	-	EXPRESSION TAG	UNP P32138
A	685	HIS	-	EXPRESSION TAG	UNP P32138
A	686	HIS	-	EXPRESSION TAG	UNP P32138
A	472	ASN	ASP	ENGINEERED MUTATION	UNP P32138
B	679	LEU	-	EXPRESSION TAG	UNP P32138
B	680	GLU	-	EXPRESSION TAG	UNP P32138
B	681	HIS	-	EXPRESSION TAG	UNP P32138
B	682	HIS	-	EXPRESSION TAG	UNP P32138
B	683	HIS	-	EXPRESSION TAG	UNP P32138
B	684	HIS	-	EXPRESSION TAG	UNP P32138
B	685	HIS	-	EXPRESSION TAG	UNP P32138
B	686	HIS	-	EXPRESSION TAG	UNP P32138
B	472	ASN	ASP	ENGINEERED MUTATION	UNP P32138

- Molecule 2 is CALCIUM ION (three-letter code: CA) (formula: Ca).

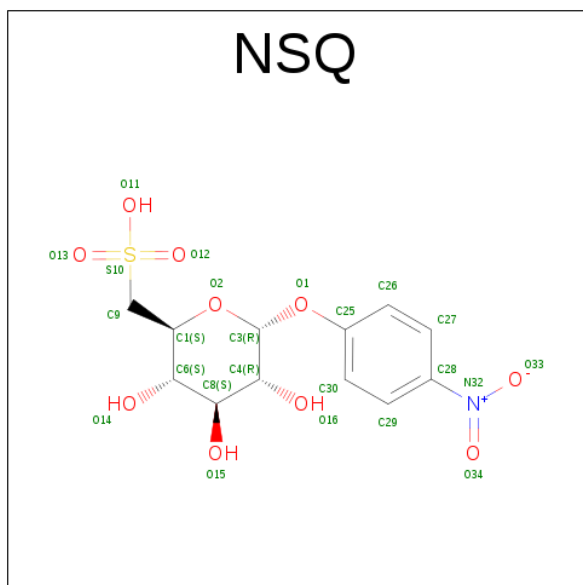
Mol	Chain	Residues	Atoms		ZeroOcc	AltConf
2	B	1	Total	Ca	0	0
			1	1		

Continued on next page...

Continued from previous page...

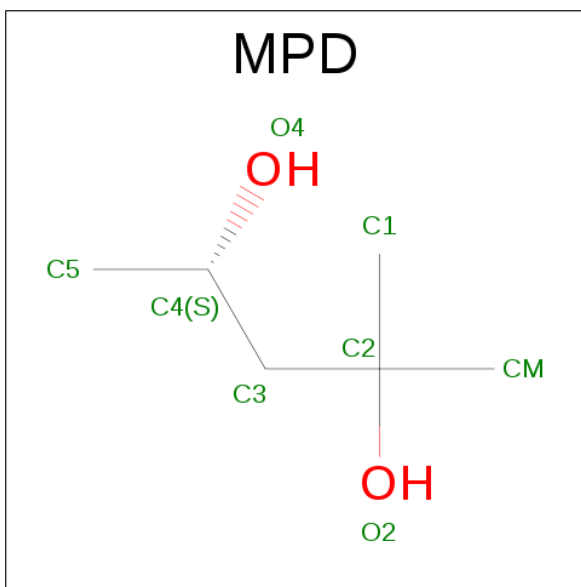
Mol	Chain	Residues	Atoms		ZeroOcc	AltConf
2	A	2	Total	Ca	0	0
			2	2		

- Molecule 3 is 4-NITROPHENYL-ALPHA-D-SULFOQUINOVOSIDE (three-letter code: NSQ) (formula: $C_{12}H_{15}NO_{10}S$).



Mol	Chain	Residues	Atoms					ZeroOcc	AltConf
3	A	1	Total	C	N	O	S	0	0
			24	12	1	10	1		
3	B	1	Total	C	N	O	S	0	0
			24	12	1	10	1		

- Molecule 4 is (4S)-2-METHYL-2,4-PENTANEDIOL (three-letter code: MPD) (formula: $C_6H_{14}O_2$).



Mol	Chain	Residues	Atoms			ZeroOcc	AltConf
4	B	1	Total	C	O	0	0
			8	6	2		

- Molecule 5 is CHLORIDE ION (three-letter code: CL) (formula: Cl).

Mol	Chain	Residues	Atoms		ZeroOcc	AltConf
5	B	1	Total	Cl	0	0
			1	1		

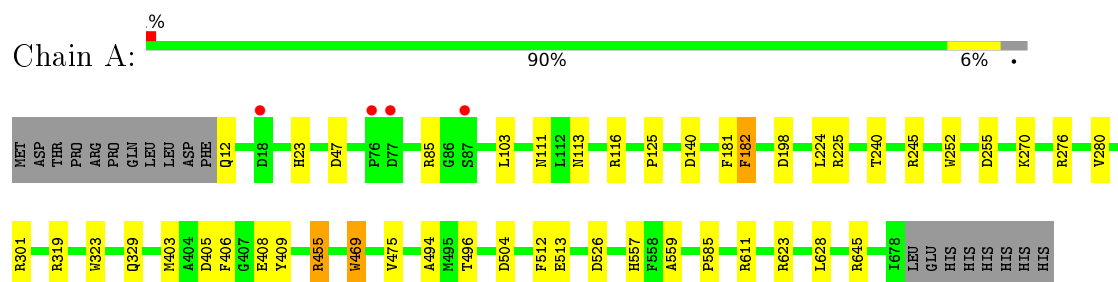
- Molecule 6 is water.

Mol	Chain	Residues	Atoms		ZeroOcc	AltConf
6	A	312	Total	O	0	0
			312	312		
6	B	290	Total	O	0	0
			290	290		

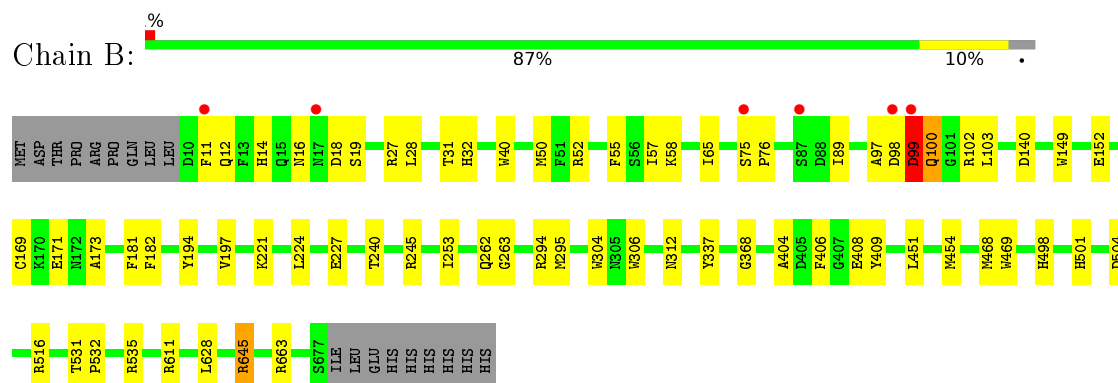
3 Residue-property plots [i](#)

These plots are drawn for all protein, RNA and DNA chains in the entry. The first graphic for a chain summarises the proportions of errors displayed in the second graphic. The second graphic shows the sequence view annotated by issues in geometry and electron density. Residues are color-coded according to the number of geometric quality criteria for which they contain at least one outlier: green = 0, yellow = 1, orange = 2 and red = 3 or more. A red dot above a residue indicates a poor fit to the electron density ($RSRZ > 2$). Stretches of 2 or more consecutive residues without any outlier are shown as a green connector. Residues present in the sample, but not in the model, are shown in grey.

• Molecule 1: ALPHA-GLUCOSIDASE YIHQ



• Molecule 1: ALPHA-GLUCOSIDASE YIHQ



4 Data and refinement statistics

Property	Value	Source
Space group	P 1 21 1	Depositor
Cell constants a, b, c, α , β , γ	77.96Å 107.62Å 103.30Å 90.00° 107.85° 90.00°	Depositor
Resolution (Å)	53.81 – 1.85 53.81 – 1.85	Depositor EDS
% Data completeness (in resolution range)	87.5 (53.81-1.85) 87.5 (53.81-1.85)	Depositor EDS
R_{merge}	0.05	Depositor
R_{sym}	(Not available)	Depositor
$\langle I/\sigma(I) \rangle$ ¹	1.52 (at 1.86Å)	Xtriage
Refinement program	REFMAC 5.8.0131	Depositor
R, R_{free}	0.163 , 0.201 0.171 , 0.205	Depositor DCC
R_{free} test set	6052 reflections (5.27%)	DCC
Wilson B-factor (Å ²)	27.6	Xtriage
Anisotropy	0.095	Xtriage
Bulk solvent k_{sol} (e/Å ³), B_{sol} (Å ²)	0.39 , 48.6	EDS
Estimated twinning fraction	No twinning to report.	Xtriage
L-test for twinning ²	$\langle L \rangle = 0.48$, $\langle L^2 \rangle = 0.31$	Xtriage
Outliers	0 of 120970 reflections	Xtriage
F_o, F_c correlation	0.97	EDS
Total number of atoms	11403	wwPDB-VP
Average B, all atoms (Å ²)	32.0	wwPDB-VP

Xtriage's analysis on translational NCS is as follows: *The largest off-origin peak in the Patterson function is 3.41% of the height of the origin peak. No significant pseudotranslation is detected.*

¹Intensities estimated from amplitudes.

²Theoretical values of $\langle |L| \rangle$, $\langle L^2 \rangle$ for acentric reflections are 0.5, 0.375 respectively for untwinned datasets, and 0.333, 0.2 for perfectly twinned datasets.

5 Model quality ⓘ

5.1 Standard geometry ⓘ

Bond lengths and bond angles in the following residue types are not validated in this section: NSQ, CA, MPD, CL

The Z score for a bond length (or angle) is the number of standard deviations the observed value is removed from the expected value. A bond length (or angle) with $|Z| > 5$ is considered an outlier worth inspection. RMSZ is the root-mean-square of all Z scores of the bond lengths (or angles).

Mol	Chain	Bond lengths		Bond angles	
		RMSZ	# $ Z > 5$	RMSZ	# $ Z > 5$
1	A	0.94	0/5525	0.96	20/7510 (0.3%)
1	B	1.02	4/5537 (0.1%)	1.00	17/7526 (0.2%)
All	All	0.98	4/11062 (0.0%)	0.98	37/15036 (0.2%)

All (4) bond length outliers are listed below:

Mol	Chain	Res	Type	Atoms	Z	Observed(Å)	Ideal(Å)
1	B	263	GLY	N-CA	11.59	1.63	1.46
1	B	337	TYR	CZ-OH	5.39	1.47	1.37
1	B	263	GLY	CA-C	5.35	1.60	1.51
1	B	501	HIS	CA-CB	-5.08	1.42	1.53

All (37) bond angle outliers are listed below:

Mol	Chain	Res	Type	Atoms	Z	Observed(°)	Ideal(°)
1	A	276	ARG	NE-CZ-NH1	10.26	125.43	120.30
1	A	276	ARG	NE-CZ-NH2	-10.17	115.22	120.30
1	B	645	ARG	NE-CZ-NH1	9.97	125.28	120.30
1	B	262	GLN	C-N-CA	-9.87	101.57	122.30
1	B	645	ARG	NE-CZ-NH2	-9.39	115.61	120.30
1	B	663	ARG	NE-CZ-NH1	9.08	124.84	120.30
1	B	663	ARG	NE-CZ-NH2	-7.72	116.44	120.30
1	A	255	ASP	CB-CG-OD1	7.67	125.20	118.30
1	A	116	ARG	NE-CZ-NH1	6.88	123.74	120.30
1	A	140	ASP	CB-CG-OD1	6.80	124.42	118.30
1	A	47	ASP	CB-CG-OD2	-6.69	112.28	118.30
1	B	262	GLN	O-C-N	-6.58	112.01	123.20
1	A	182	PHE	CB-CG-CD1	6.35	125.24	120.80
1	B	516	ARG	NE-CZ-NH1	6.23	123.42	120.30
1	B	263	GLY	N-CA-C	6.23	128.67	113.10

Continued on next page...

Continued from previous page...

Mol	Chain	Res	Type	Atoms	Z	Observed(°)	Ideal(°)
1	A	623	ARG	NE-CZ-NH1	6.20	123.40	120.30
1	A	504	ASP	CB-CG-OD2	-6.09	112.82	118.30
1	A	623	ARG	NE-CZ-NH2	-6.08	117.26	120.30
1	B	140	ASP	CB-CG-OD1	6.06	123.76	118.30
1	B	611	ARG	NE-CZ-NH1	5.96	123.28	120.30
1	B	504	ASP	CB-CG-OD1	5.89	123.60	118.30
1	B	504	ASP	CB-CG-OD2	-5.76	113.11	118.30
1	A	611	ARG	NE-CZ-NH1	5.64	123.12	120.30
1	A	140	ASP	CB-CG-OD2	-5.63	113.23	118.30
1	B	295	MET	CG-SD-CE	-5.59	91.26	100.20
1	B	294	ARG	NE-CZ-NH1	5.57	123.08	120.30
1	B	27	ARG	NE-CZ-NH1	5.55	123.08	120.30
1	A	85	ARG	NE-CZ-NH1	5.53	123.06	120.30
1	B	535	ARG	NE-CZ-NH1	5.38	122.99	120.30
1	A	455	ARG	NE-CZ-NH1	5.33	122.97	120.30
1	A	182	PHE	CB-CG-CD2	-5.28	117.11	120.80
1	A	198	ASP	CB-CG-OD2	-5.16	113.65	118.30
1	A	455	ARG	NE-CZ-NH2	-5.15	117.73	120.30
1	A	611	ARG	NE-CZ-NH2	-5.09	117.75	120.30
1	A	198	ASP	CB-CG-OD1	5.08	122.88	118.30
1	B	169	CYS	CA-CB-SG	-5.04	104.93	114.00
1	A	301	ARG	NE-CZ-NH2	-5.01	117.79	120.30

There are no chirality outliers.

There are no planarity outliers.

5.2 Too-close contacts ⓘ

In the following table, the Non-H and H(model) columns list the number of non-hydrogen atoms and hydrogen atoms in the chain respectively. The H(added) column lists the number of hydrogen atoms added and optimized by MolProbity. The Clashes column lists the number of clashes within the asymmetric unit, whereas Symm-Clashes lists symmetry related clashes.

Mol	Chain	Non-H	H(model)	H(added)	Clashes	Symm-Clashes
1	A	5365	0	5079	15	0
1	B	5376	0	5081	24	1
2	A	2	0	0	0	0
2	B	1	0	0	0	0
3	A	24	0	14	0	0
3	B	24	0	15	0	0
4	B	8	0	14	0	0

Continued on next page...

Continued from previous page...

Mol	Chain	Non-H	H(model)	H(added)	Clashes	Symm-Clashes
5	B	1	0	0	0	0
6	A	312	0	0	0	0
6	B	290	0	0	0	0
All	All	11403	0	10203	39	1

The all-atom clashscore is defined as the number of clashes found per 1000 atoms (including hydrogen atoms). The all-atom clashscore for this structure is 2.

All (39) close contacts within the same asymmetric unit are listed below, sorted by their clash magnitude.

Atom-1	Atom-2	Interatomic distance (Å)	Clash overlap (Å)
1:B:11:PHE:CZ	1:B:97:ALA:HB2	2.29	0.68
1:B:65:ILE:HD13	1:B:89:ILE:HD13	1.76	0.67
1:B:98:ASP:O	1:B:99:ASP:OD1	2.24	0.55
1:A:512:PHE:O	1:A:513:GLU:HB2	2.07	0.54
1:A:512:PHE:O	1:A:513:GLU:CB	2.49	0.53
1:A:526:ASP:OD1	1:A:557:HIS:CE1	2.62	0.53
1:B:171:GLU:HB2	1:B:173:ALA:HB2	1.91	0.52
1:A:12:GLN:HB2	1:A:23:HIS:HB2	1.92	0.52
1:B:11:PHE:CE1	1:B:103:LEU:HD13	2.46	0.50
1:A:496:THR:HG22	1:A:496:THR:O	2.11	0.50
1:B:404:ALA:HB3	1:B:454:MET:HG2	1.93	0.50
1:B:57:ILE:HD11	1:B:149:TRP:CD1	2.47	0.49
1:B:468:MET:HG2	1:B:498:HIS:CE1	2.47	0.49
1:B:152:GLU:OE2	1:B:408:GLU:OE2	2.30	0.49
1:B:531:THR:HB	1:B:532:PRO:HD2	1.95	0.48
1:A:240:THR:HB	1:A:245:ARG:HG2	1.94	0.48
1:B:28:LEU:HD21	1:B:31:THR:CG2	2.44	0.48
1:B:406:PHE:HA	1:B:408:GLU:OE1	2.13	0.48
1:B:52:ARG:CZ	1:B:368:GLY:HA2	2.44	0.47
1:A:111:ASN:OD1	1:A:113:ASN:HB2	2.14	0.47
1:B:304:TRP:HA	1:B:306:TRP:CH2	2.48	0.47
1:A:455:ARG:HB2	1:A:469:TRP:CH2	2.50	0.47
1:A:494:ALA:HB1	1:A:585:PRO:HG3	1.97	0.47
1:B:75:SER:HB2	1:B:76:PRO:HD2	1.96	0.46
1:B:12:GLN:HE21	1:B:14:HIS:CD2	2.34	0.46
1:B:194:TYR:CE2	1:B:227:GLU:HB2	2.51	0.46
1:A:280:VAL:HA	1:A:559:ALA:HA	2.00	0.44
1:A:103:LEU:O	1:A:225:ARG:HA	2.18	0.43
1:B:50:MET:HB2	1:B:55:PHE:CE1	2.54	0.43
1:A:406:PHE:HA	1:A:408:GLU:OE1	2.20	0.42

Continued on next page...

Continued from previous page...

Atom-1	Atom-2	Interatomic distance (Å)	Clash overlap (Å)
1:B:19:SER:HA	1:B:32:HIS:O	2.18	0.42
1:A:403:MET:HG2	1:A:405:ASP:HB2	2.01	0.42
1:B:240:THR:HB	1:B:245:ARG:HG2	2.01	0.42
1:B:99:ASP:HB3	1:B:102:ARG:HG3	2.02	0.41
1:B:16:ASN:HB2	1:B:19:SER:OG	2.20	0.41
1:B:197:VAL:HG22	1:B:224:LEU:HG	2.01	0.41
1:A:252:TRP:CE2	1:A:329:GLN:HG3	2.56	0.41
1:A:319:ARG:HG3	1:A:323:TRP:CE2	2.57	0.40
1:B:253:ILE:CD1	1:B:451:LEU:HD22	2.52	0.40

All (1) symmetry-related close contacts are listed below. The label for Atom-2 includes the symmetry operator and encoded unit-cell translations to be applied.

Atom-1	Atom-2	Interatomic distance (Å)	Clash overlap (Å)
1:B:312:ASN:OD1	1:B:645:ARG:NH2[2_655]	2.07	0.13

5.3 Torsion angles

5.3.1 Protein backbone

In the following table, the Percentiles column shows the percent Ramachandran outliers of the chain as a percentile score with respect to all X-ray entries followed by that with respect to entries of similar resolution.

The Analysed column shows the number of residues for which the backbone conformation was analysed, and the total number of residues.

Mol	Chain	Analysed	Favoured	Allowed	Outliers	Percentiles	
1	A	665/686 (97%)	644 (97%)	20 (3%)	1 (0%)	52	36
1	B	666/686 (97%)	635 (95%)	29 (4%)	2 (0%)	46	29
All	All	1331/1372 (97%)	1279 (96%)	49 (4%)	3 (0%)	52	36

All (3) Ramachandran outliers are listed below:

Mol	Chain	Res	Type
1	B	100	GLN
1	B	99	ASP
1	A	475	VAL

5.3.2 Protein sidechains ⓘ

In the following table, the Percentiles column shows the percent sidechain outliers of the chain as a percentile score with respect to all X-ray entries followed by that with respect to entries of similar resolution.

The Analysed column shows the number of residues for which the sidechain conformation was analysed, and the total number of residues.

Mol	Chain	Analysed	Rotameric	Outliers	Percentiles	
1	A	561/580 (97%)	552 (98%)	9 (2%)	70	57
1	B	562/580 (97%)	551 (98%)	11 (2%)	63	47
All	All	1123/1160 (97%)	1103 (98%)	20 (2%)	66	52

All (20) residues with a non-rotameric sidechain are listed below:

Mol	Chain	Res	Type
1	A	125	PRO
1	A	181	PHE
1	A	182	PHE
1	A	224	LEU
1	A	270	LYS
1	A	409	TYR
1	A	469	TRP
1	A	628	LEU
1	A	645	ARG
1	B	18	ASP
1	B	40	TRP
1	B	58	LYS
1	B	99	ASP
1	B	100	GLN
1	B	181	PHE
1	B	182	PHE
1	B	221	LYS
1	B	409	TYR
1	B	469	TRP
1	B	628	LEU

Some sidechains can be flipped to improve hydrogen bonding and reduce clashes. All (2) such sidechains are listed below:

Mol	Chain	Res	Type
1	A	62	GLN
1	B	12	GLN

5.3.3 RNA ⓘ

There are no RNA molecules in this entry.

5.4 Non-standard residues in protein, DNA, RNA chains ⓘ

There are no non-standard protein/DNA/RNA residues in this entry.

5.5 Carbohydrates ⓘ

There are no carbohydrates in this entry.

5.6 Ligand geometry ⓘ

Of 7 ligands modelled in this entry, 4 are monoatomic - leaving 3 for Mogul analysis.

In the following table, the Counts columns list the number of bonds (or angles) for which Mogul statistics could be retrieved, the number of bonds (or angles) that are observed in the model and the number of bonds (or angles) that are defined in the chemical component dictionary. The Link column lists molecule types, if any, to which the group is linked. The Z score for a bond length (or angle) is the number of standard deviations the observed value is removed from the expected value. A bond length (or angle) with $|Z| > 2$ is considered an outlier worth inspection. RMSZ is the root-mean-square of all Z scores of the bond lengths (or angles).

Mol	Type	Chain	Res	Link	Bond lengths			Bond angles		
					Counts	RMSZ	$\# Z > 2$	Counts	RMSZ	$\# Z > 2$
3	NSQ	A	1681	-	22,25,25	1.44	3 (13%)	32,37,37	1.97	7 (21%)
4	MPD	B	1679	-	6,7,7	0.24	0	6,10,10	0.53	0
3	NSQ	B	1680	-	22,25,25	1.41	4 (18%)	32,37,37	2.46	9 (28%)

In the following table, the Chirals column lists the number of chiral outliers, the number of chiral centers analysed, the number of these observed in the model and the number defined in the chemical component dictionary. Similar counts are reported in the Torsion and Rings columns. '-' means no outliers of that kind were identified.

Mol	Type	Chain	Res	Link	Chirals	Torsions	Rings
3	NSQ	A	1681	-	-	0/13/33/33	0/2/2/2
4	MPD	B	1679	-	-	0/5/5/5	0/0/0/0
3	NSQ	B	1680	-	-	0/13/33/33	0/2/2/2

All (7) bond length outliers are listed below:

Mol	Chain	Res	Type	Atoms	Z	Observed(Å)	Ideal(Å)
3	A	1681	NSQ	C9-S10	-4.21	1.72	1.77
3	B	1680	NSQ	O1-C25	-3.35	1.32	1.38
3	B	1680	NSQ	C9-S10	-2.77	1.74	1.77
3	A	1681	NSQ	O1-C25	-2.27	1.34	1.38
3	B	1680	NSQ	O1-C3	2.50	1.45	1.41
3	A	1681	NSQ	O34-N32	2.91	1.28	1.22
3	B	1680	NSQ	O34-N32	3.36	1.29	1.22

All (16) bond angle outliers are listed below:

Mol	Chain	Res	Type	Atoms	Z	Observed(°)	Ideal(°)
3	B	1680	NSQ	O12-S10-C9	-10.03	99.85	106.92
3	A	1681	NSQ	O13-S10-C9	-7.14	101.89	106.92
3	B	1680	NSQ	O14-C6-C8	-2.55	104.61	110.36
3	A	1681	NSQ	C27-C28-N32	-2.26	117.89	119.51
3	B	1680	NSQ	C29-C28-N32	2.03	120.97	119.51
3	A	1681	NSQ	O16-C4-C8	2.19	115.30	110.36
3	A	1681	NSQ	O2-C1-C6	2.25	113.96	109.67
3	B	1680	NSQ	O13-S10-C9	2.35	108.57	106.92
3	B	1680	NSQ	O13-S10-O12	2.59	121.27	113.96
3	B	1680	NSQ	O15-C8-C4	2.62	116.26	110.36
3	B	1680	NSQ	O2-C3-C4	2.66	115.80	110.28
3	B	1680	NSQ	C8-C6-C1	2.69	115.03	110.23
3	A	1681	NSQ	O12-S10-C9	2.71	108.83	106.92
3	A	1681	NSQ	C29-C28-N32	3.10	121.74	119.51
3	A	1681	NSQ	O1-C3-C4	3.17	111.53	106.98
3	B	1680	NSQ	O34-N32-C28	4.84	122.16	118.67

There are no chirality outliers.

There are no torsion outliers.

There are no ring outliers.

No monomer is involved in short contacts.

5.7 Other polymers ⓘ

There are no such residues in this entry.

5.8 Polymer linkage issues ⓘ

There are no chain breaks in this entry.

6 Fit of model and data [i](#)

6.1 Protein, DNA and RNA chains [i](#)

In the following table, the column labelled ‘#RSRZ> 2’ contains the number (and percentage) of RSRZ outliers, followed by percent RSRZ outliers for the chain as percentile scores relative to all X-ray entries and entries of similar resolution. The OWAB column contains the minimum, median, 95th percentile and maximum values of the occupancy-weighted average B-factor per residue. The column labelled ‘Q< 0.9’ lists the number of (and percentage) of residues with an average occupancy less than 0.9.

Mol	Chain	Analysed	<RSRZ>	#RSRZ>2	OWAB(Å ²)	Q<0.9
1	A	667/686 (97%)	-0.55	4 (0%) 90 90	22, 30, 49, 92	0
1	B	668/686 (97%)	-0.56	6 (0%) 85 85	20, 29, 51, 93	0
All	All	1335/1372 (97%)	-0.55	10 (0%) 89 88	20, 30, 50, 93	0

All (10) RSRZ outliers are listed below:

Mol	Chain	Res	Type	RSRZ
1	A	76	PRO	7.2
1	A	87	SER	3.7
1	B	98	ASP	3.2
1	B	11	PHE	3.0
1	B	75	SER	2.7
1	B	99	ASP	2.6
1	A	77	ASP	2.4
1	B	17	ASN	2.4
1	A	18	ASP	2.2
1	B	87	SER	2.1

6.2 Non-standard residues in protein, DNA, RNA chains [i](#)

There are no non-standard protein/DNA/RNA residues in this entry.

6.3 Carbohydrates [i](#)

There are no carbohydrates in this entry.

6.4 Ligands [i](#)

In the following table, the Atoms column lists the number of modelled atoms in the group and the number defined in the chemical component dictionary. LLDF column lists the quality of electron density of the group with respect to its neighbouring residues in protein, DNA or RNA chains. The B-factors column lists the minimum, median, 95th percentile and maximum values of B factors of atoms in the group. The column labelled 'Q< 0.9' lists the number of atoms with occupancy less than 0.9.

Mol	Type	Chain	Res	Atoms	RSCC	RSR	LLDF	B-factors(Å ²)	Q<0.9
4	MPD	B	1679	8/8	0.89	0.12	7.29	43,45,48,48	0
2	CA	B	1678	1/1	0.99	0.08	1.30	23,23,23,23	0
3	NSQ	A	1681	24/24	0.97	0.08	-0.07	23,25,45,48	0
3	NSQ	B	1680	24/24	0.98	0.07	-0.62	21,24,49,58	0
2	CA	A	1679	1/1	0.99	0.06	-0.90	22,22,22,22	0
5	CL	B	1681	1/1	0.99	0.07	-1.32	30,30,30,30	0
2	CA	A	1680	1/1	1.00	0.03	-2.55	36,36,36,36	0

6.5 Other polymers [i](#)

There are no such residues in this entry.