



# Full wwPDB X-ray Structure Validation Report ⓘ

Feb 1, 2016 – 02:45 PM GMT

PDB ID : 4AG9  
Title : C. elegans glucosamine-6-phosphate N-acetyltransferase (GNA1): ternary complex with coenzyme A and GlcNAc  
Authors : Dorfmueller, H.C.; Fang, W.; Rao, F.V.; Blair, D.E.; Attrill, H.; Shepherd, S.M.; Van Aalten, D.M.F.  
Deposited on : 2012-01-24  
Resolution : 1.76 Å(reported)

This is a Full wwPDB X-ray Structure Validation Report for a publicly released PDB entry.  
We welcome your comments at [validation@mail.wwpdb.org](mailto:validation@mail.wwpdb.org)  
A user guide is available at  
<http://wwpdb.org/validation/2016/XrayValidationReportHelp>  
with specific help available everywhere you see the ⓘ symbol.

---

The following versions of software and data (see [references ⓘ](#)) were used in the production of this report:

MolProbity : 4.02b-467  
Mogul : 1.7 (RC4), CSD as536be (2015)  
Xtriage (Phenix) : 1.9-1692  
EDS : rb-20026688  
Percentile statistics : 20151230.v01 (using entries in the PDB archive December 30th 2015)  
Refmac : 5.8.0135  
CCP4 : 6.5.0  
Ideal geometry (proteins) : Engh & Huber (2001)  
Ideal geometry (DNA, RNA) : Parkinson et al. (1996)  
Validation Pipeline (wwPDB-VP) : trunk26865

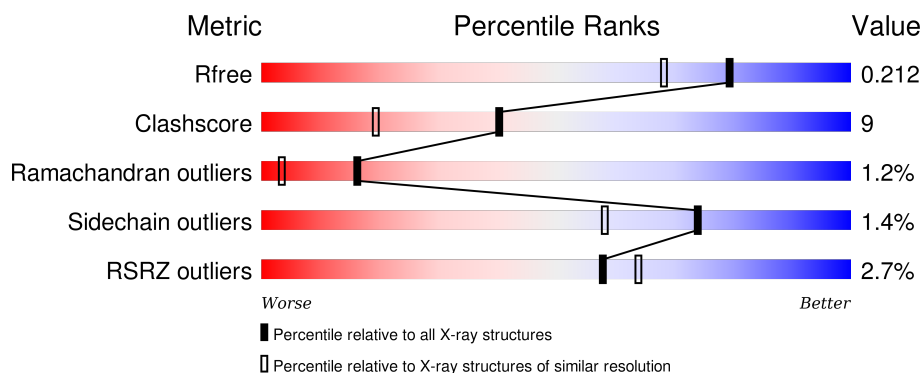
# 1 Overall quality at a glance ⓘ

The following experimental techniques were used to determine the structure:

## *X-RAY DIFFRACTION*

The reported resolution of this entry is 1.76 Å.

Percentile scores (ranging between 0-100) for global validation metrics of the entry are shown in the following graphic. The table shows the number of entries on which the scores are based.



Metric	Whole archive (#Entries)	Similar resolution (#Entries, resolution range(Å))
$R_{free}$	91344	1609 (1.76-1.76)
Clashscore	102246	1730 (1.76-1.76)
Ramachandran outliers	100387	1711 (1.76-1.76)
Sidechain outliers	100360	1711 (1.76-1.76)
RSRZ outliers	91569	1610 (1.76-1.76)

The table below summarises the geometric issues observed across the polymeric chains and their fit to the electron density. The red, orange, yellow and green segments on the lower bar indicate the fraction of residues that contain outliers for  $\geq 3$ , 2, 1 and 0 types of geometric quality criteria. A grey segment represents the fraction of residues that are not modelled. The numeric value for each fraction is indicated below the corresponding segment, with a dot representing fractions  $\leq 5\%$ . The upper red bar (where present) indicates the fraction of residues that have poor fit to the electron density. The numeric value is given above the bar.

Mol	Chain	Length	Quality of chain
1	A	165	<div> <div>4%</div> <div>79%</div> <div>17%</div> <div>..</div> </div>
1	B	165	<div> <div>2%</div> <div>90%</div> <div>7%</div> <div>...</div> </div>

## 2 Entry composition [i](#)

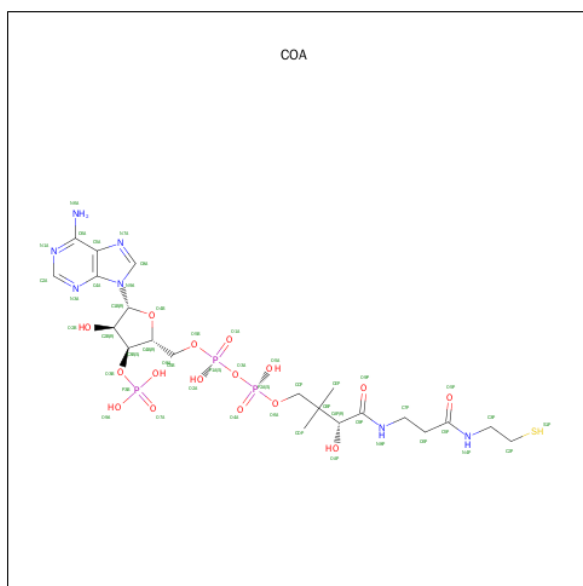
There are 5 unique types of molecules in this entry. The entry contains 3133 atoms, of which 0 are hydrogens and 0 are deuteriums.

In the tables below, the ZeroOcc column contains the number of atoms modelled with zero occupancy, the AltConf column contains the number of residues with at least one atom in alternate conformation and the Trace column contains the number of residues modelled with at most 2 atoms.

- Molecule 1 is a protein called GLUCOSAMINE-6-PHOSPHATE N-ACETYLTRANSFERASE.

Mol	Chain	Residues	Atoms					ZeroOcc	AltConf	Trace
1	A	164	Total	C	N	O	S	0	0	0
			1290	822	219	243	6			
1	B	164	Total	C	N	O	S	0	0	0
			1290	822	219	243	6			

- Molecule 2 is COENZYME A (three-letter code: COA) (formula:  $C_{21}H_{36}N_7O_{16}P_3S$ ).



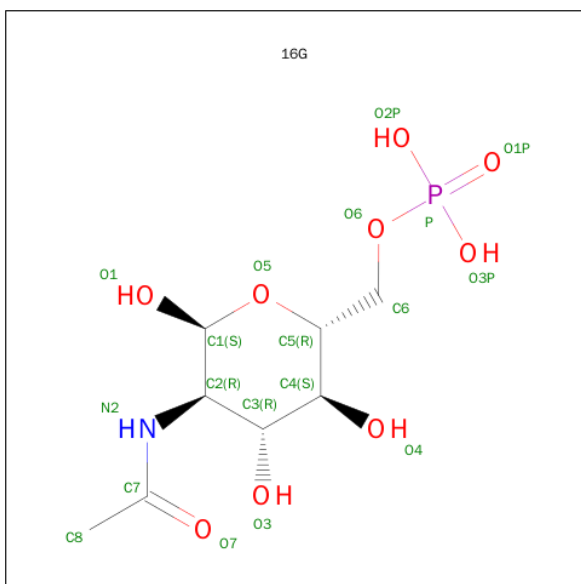
Mol	Chain	Residues	Atoms					ZeroOcc	AltConf
2	A	1	Total	C	N	O	P S	0	0
			48	21	7	16	3 1		
2	B	1	Total	C	N	O	P S	0	0
			48	21	7	16	3 1		

- Molecule 3 is 1,2-ETHANEDIOL (three-letter code: EDO) (formula:  $C_2H_6O_2$ ).



Mol	Chain	Residues	Atoms			ZeroOcc	AltConf
3	A	1	Total	C	O	0	0
			4	2	2		
3	B	1	Total	C	O	0	0
			4	2	2		

- Molecule 4 is SUGAR (N-ACETYL-D-GLUCOSAMINE-6-PHOSPHATE) (three-letter code: 16G) (formula: C<sub>8</sub>H<sub>16</sub>NO<sub>9</sub>P).



Mol	Chain	Residues	Atoms					ZeroOcc	AltConf
4	A	1	Total	C	N	O	P	0	0
			19	8	1	9	1		

*Continued on next page...*

*Continued from previous page...*

Mol	Chain	Residues	Atoms					ZeroOcc	AltConf
4	B	1	Total	C	N	O	P	0	0
			19	8	1	9	1		

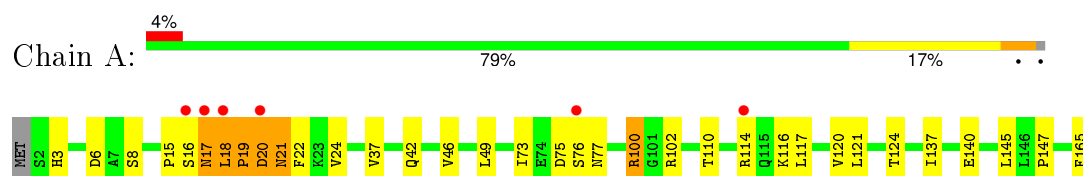
- Molecule 5 is water.

Mol	Chain	Residues	Atoms		ZeroOcc	AltConf
5	A	202	Total	O	0	0
			202	202		
5	B	209	Total	O	0	0
			209	209		

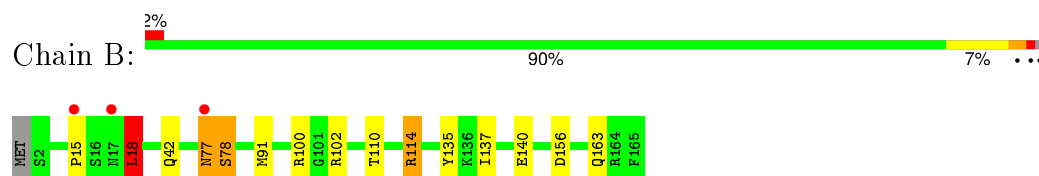
### 3 Residue-property plots [i](#)

These plots are drawn for all protein, RNA and DNA chains in the entry. The first graphic for a chain summarises the proportions of errors displayed in the second graphic. The second graphic shows the sequence view annotated by issues in geometry and electron density. Residues are color-coded according to the number of geometric quality criteria for which they contain at least one outlier: green = 0, yellow = 1, orange = 2 and red = 3 or more. A red dot above a residue indicates a poor fit to the electron density ( $RSRZ > 2$ ). Stretches of 2 or more consecutive residues without any outlier are shown as a green connector. Residues present in the sample, but not in the model, are shown in grey.

- Molecule 1: GLUCOSAMINE-6-PHOSPHATE N-ACETYLTRANSFERASE



- Molecule 1: GLUCOSAMINE-6-PHOSPHATE N-ACETYLTRANSFERASE



## 4 Data and refinement statistics

Property	Value	Source
Space group	P 21 21 21	Depositor
Cell constants a, b, c, $\alpha$ , $\beta$ , $\gamma$	48.87Å 53.35Å 135.10Å 90.00° 90.00° 90.00°	Depositor
Resolution (Å)	14.99 – 1.76 14.99 – 1.76	Depositor EDS
% Data completeness (in resolution range)	97.1 (14.99-1.76) 97.3 (14.99-1.76)	Depositor EDS
$R_{merge}$	0.05	Depositor
$R_{sym}$	(Not available)	Depositor
$\langle I/\sigma(I) \rangle$ <sup>1</sup>	2.01 (at 1.76Å)	Xtriage
Refinement program	REFMAC 5.6.0117	Depositor
R, $R_{free}$	0.190 , 0.232 0.189 , 0.212	Depositor DCC
$R_{free}$ test set	1742 reflections (5.30%)	DCC
Wilson B-factor (Å <sup>2</sup> )	23.9	Xtriage
Anisotropy	0.156	Xtriage
Bulk solvent $k_{sol}$ (e/Å <sup>3</sup> ), $B_{sol}$ (Å <sup>2</sup> )	0.32 , 41.8	EDS
Estimated twinning fraction	No twinning to report.	Xtriage
L-test for twinning <sup>2</sup>	$\langle  L  \rangle = 0.50$ , $\langle L^2 \rangle = 0.33$	Xtriage
Outliers	2 of 34593 reflections (0.006%)	Xtriage
$F_o, F_c$ correlation	0.96	EDS
Total number of atoms	3133	wwPDB-VP
Average B, all atoms (Å <sup>2</sup> )	31.0	wwPDB-VP

Xtriage's analysis on translational NCS is as follows: *The largest off-origin peak in the Patterson function is 5.17% of the height of the origin peak. No significant pseudotranslation is detected.*

<sup>1</sup>Intensities estimated from amplitudes.

<sup>2</sup>Theoretical values of  $\langle |L| \rangle$ ,  $\langle L^2 \rangle$  for acentric reflections are 0.5, 0.375 respectively for untwinned datasets, and 0.333, 0.2 for perfectly twinned datasets.

## 5 Model quality

### 5.1 Standard geometry

Bond lengths and bond angles in the following residue types are not validated in this section: COA, 16G, EDO

The Z score for a bond length (or angle) is the number of standard deviations the observed value is removed from the expected value. A bond length (or angle) with  $|Z| > 5$  is considered an outlier worth inspection. RMSZ is the root-mean-square of all Z scores of the bond lengths (or angles).

Mol	Chain	Bond lengths		Bond angles	
		RMSZ	$\# Z  > 5$	RMSZ	$\# Z  > 5$
1	A	0.90	0/1315	1.01	4/1775 (0.2%)
1	B	1.05	2/1315 (0.2%)	1.06	5/1775 (0.3%)
All	All	0.98	2/2630 (0.1%)	1.04	9/3550 (0.3%)

Chiral center outliers are detected by calculating the chiral volume of a chiral center and verifying if the center is modelled as a planar moiety or with the opposite hand. A planarity outlier is detected by checking planarity of atoms in a peptide group, atoms in a mainchain group or atoms of a sidechain that are expected to be planar.

Mol	Chain	#Chirality outliers	#Planarity outliers
1	A	0	1

All (2) bond length outliers are listed below:

Mol	Chain	Res	Type	Atoms	Z	Observed(Å)	Ideal(Å)
1	B	140	GLU	CD-OE1	6.81	1.33	1.25
1	B	91	MET	N-CA	5.09	1.56	1.46

All (9) bond angle outliers are listed below:

Mol	Chain	Res	Type	Atoms	Z	Observed(°)	Ideal(°)
1	A	100	ARG	NE-CZ-NH2	-8.06	116.27	120.30
1	B	114	ARG	NE-CZ-NH2	-6.87	116.87	120.30
1	B	18	LEU	CA-CB-CG	5.73	128.49	115.30
1	A	102	ARG	NE-CZ-NH2	-5.62	117.49	120.30
1	B	102	ARG	NE-CZ-NH1	-5.58	117.51	120.30
1	A	20	ASP	C-N-CA	5.44	135.31	121.70
1	B	114	ARG	NE-CZ-NH1	5.43	123.02	120.30
1	A	21	ASN	N-CA-CB	-5.36	100.95	110.60
1	B	156	ASP	CB-CG-OD1	5.11	122.90	118.30



There are no chirality outliers.

All (1) planarity outliers are listed below:

Mol	Chain	Res	Type	Group
1	A	19	PRO	Peptide

## 5.2 Too-close contacts ⓘ

In the following table, the Non-H and H(model) columns list the number of non-hydrogen atoms and hydrogen atoms in the chain respectively. The H(added) column lists the number of hydrogen atoms added and optimized by MolProbity. The Clashes column lists the number of clashes within the asymmetric unit, whereas Symm-Clashes lists symmetry related clashes.

Mol	Chain	Non-H	H(model)	H(added)	Clashes	Symm-Clashes
1	A	1290	0	1292	33	1
1	B	1290	0	1292	10	0
2	A	48	0	32	11	0
2	B	48	0	32	0	0
3	A	4	0	6	1	0
3	B	4	0	6	3	0
4	A	19	0	14	0	0
4	B	19	0	14	0	0
5	A	202	0	0	6	1
5	B	209	0	0	5	0
All	All	3133	0	2688	47	1

The all-atom clashscore is defined as the number of clashes found per 1000 atoms (including hydrogen atoms). The all-atom clashscore for this structure is 9.

All (47) close contacts within the same asymmetric unit are listed below, sorted by their clash magnitude.

Atom-1	Atom-2	Interatomic distance (Å)	Clash overlap (Å)
1:B:15:PRO:HG2	1:B:18:LEU:HD11	1.24	1.16
1:B:110:THR:HB	5:B:2152:HOH:O	1.50	1.10
1:A:19:PRO:HB2	1:A:20:ASP:O	1.65	0.97
1:A:37:VAL:HG13	1:A:46:VAL:HG11	1.50	0.94
1:A:114:ARG:HA	2:A:1166:COA:O1A	1.68	0.92
1:A:21:ASN:ND2	1:A:75:ASP:OD1	2.06	0.88
1:A:114:ARG:HH12	2:A:1166:COA:H8A	1.46	0.81
1:A:21:ASN:HB2	1:A:76:SER:OG	1.80	0.80
1:A:116:LYS:HA	2:A:1166:COA:O2A	1.82	0.79
2:A:1166:COA:H62	5:A:2134:HOH:O	1.86	0.75

*Continued on next page...*

*Continued from previous page...*

Atom-1	Atom-2	Interatomic distance (Å)	Clash overlap (Å)
1:A:21:ASN:N	1:A:21:ASN:OD1	2.14	0.73
3:A:1167:EDO:H22	5:A:2101:HOH:O	1.90	0.71
3:B:1168:EDO:C2	5:B:2122:HOH:O	2.38	0.70
1:A:140:GLU:OE1	5:A:2131:HOH:O	2.09	0.69
1:A:20:ASP:OD1	1:A:21:ASN:HA	1.92	0.69
1:A:117:LEU:O	1:A:120:VAL:HG12	1.92	0.69
1:A:114:ARG:HH12	2:A:1166:COA:C8A	2.06	0.67
1:B:15:PRO:CG	1:B:18:LEU:HD11	2.16	0.63
1:A:114:ARG:HH22	2:A:1166:COA:H2B	1.66	0.61
1:A:6:ASP:OD2	1:A:8:SER:OG	2.19	0.60
3:B:1168:EDO:H21	5:B:2122:HOH:O	1.99	0.60
1:A:117:LEU:O	1:A:120:VAL:CG1	2.49	0.60
1:A:19:PRO:CB	1:A:20:ASP:O	2.44	0.59
1:A:3:HIS:HD2	5:A:2016:HOH:O	1.87	0.57
2:A:1166:COA:C7P	5:A:2135:HOH:O	2.53	0.57
1:B:114:ARG:NH2	5:B:2151:HOH:O	2.38	0.55
3:B:1168:EDO:H22	5:B:2122:HOH:O	2.06	0.54
1:A:147:PRO:HB2	2:A:1166:COA:H2A	1.90	0.52
1:A:114:ARG:NH1	2:A:1166:COA:H8A	2.21	0.52
1:A:42:GLN:OE1	1:A:110:THR:HG23	2.10	0.51
1:B:42:GLN:OE1	1:B:110:THR:HG23	2.09	0.51
1:A:24:VAL:HG22	1:A:73:ILE:HG12	1.92	0.51
1:A:19:PRO:C	1:A:20:ASP:O	2.47	0.49
1:A:22:PHE:HE1	1:A:75:ASP:HB2	1.79	0.47
1:B:77:ASN:CG	1:B:77:ASN:O	2.53	0.47
1:B:77:ASN:O	1:B:78:SER:HB3	2.16	0.45
1:B:100:ARG:HG3	1:B:135:TYR:CZ	2.53	0.43
1:A:21:ASN:HB2	1:A:76:SER:HG	1.79	0.43
1:A:77:ASN:HB3	5:A:2109:HOH:O	2.19	0.43
1:A:137:ILE:CG2	1:B:163:GLN:HB3	2.49	0.42
1:A:145:LEU:HD11	2:A:1166:COA:HN4	1.84	0.42
1:A:114:ARG:CA	2:A:1166:COA:O1A	2.55	0.41
1:A:16:SER:O	1:A:17:ASN:O	2.39	0.41
1:A:117:LEU:C	1:A:120:VAL:HG12	2.40	0.41
1:A:15:PRO:HD3	1:A:124:THR:OG1	2.21	0.41
1:A:120:VAL:HG13	1:A:121:LEU:N	2.36	0.40
1:A:165:PHE:HE2	1:B:137:ILE:CD1	2.33	0.40

All (1) symmetry-related close contacts are listed below. The label for Atom-2 includes the symmetry operator and encoded unit-cell translations to be applied.

Atom-1	Atom-2	Interatomic distance (Å)	Clash overlap (Å)
1:A:77:ASN:ND2	5:A:2166:HOH:O[3_745]	1.92	0.28

## 5.3 Torsion angles [i](#)

### 5.3.1 Protein backbone [i](#)

In the following table, the Percentiles column shows the percent Ramachandran outliers of the chain as a percentile score with respect to all X-ray entries followed by that with respect to entries of similar resolution.

The Analysed column shows the number of residues for which the backbone conformation was analysed, and the total number of residues.

Mol	Chain	Analysed	Favoured	Allowed	Outliers	Percentiles	
1	A	162/165 (98%)	155 (96%)	4 (2%)	3 (2%)	10	1
1	B	162/165 (98%)	155 (96%)	6 (4%)	1 (1%)	30	12
All	All	324/330 (98%)	310 (96%)	10 (3%)	4 (1%)	16	3

All (4) Ramachandran outliers are listed below:

Mol	Chain	Res	Type
1	A	17	ASN
1	B	78	SER
1	A	18	LEU
1	A	49	LEU

### 5.3.2 Protein sidechains [i](#)

In the following table, the Percentiles column shows the percent sidechain outliers of the chain as a percentile score with respect to all X-ray entries followed by that with respect to entries of similar resolution.

The Analysed column shows the number of residues for which the sidechain conformation was analysed, and the total number of residues.

Mol	Chain	Analysed	Rotameric	Outliers	Percentiles	
1	A	146/147 (99%)	144 (99%)	2 (1%)	74	58
1	B	146/147 (99%)	144 (99%)	2 (1%)	74	58
All	All	292/294 (99%)	288 (99%)	4 (1%)	74	58

All (4) residues with a non-rotameric sidechain are listed below:

Mol	Chain	Res	Type
1	A	18	LEU
1	A	100	ARG
1	B	18	LEU
1	B	77	ASN

Some sidechains can be flipped to improve hydrogen bonding and reduce clashes. All (7) such sidechains are listed below:

Mol	Chain	Res	Type
1	A	3	HIS
1	A	67	ASN
1	A	151	GLN
1	A	159	ASN
1	B	67	ASN
1	B	151	GLN
1	B	159	ASN

### 5.3.3 RNA [i](#)

There are no RNA molecules in this entry.

## 5.4 Non-standard residues in protein, DNA, RNA chains [i](#)

There are no non-standard protein/DNA/RNA residues in this entry.

## 5.5 Carbohydrates [i](#)

There are no carbohydrates in this entry.

## 5.6 Ligand geometry [i](#)

6 ligands are modelled in this entry.

In the following table, the Counts columns list the number of bonds (or angles) for which Mogul statistics could be retrieved, the number of bonds (or angles) that are observed in the model and the number of bonds (or angles) that are defined in the chemical component dictionary. The Link column lists molecule types, if any, to which the group is linked. The Z score for a bond length (or angle) is the number of standard deviations the observed value is removed from the expected value. A bond length (or angle) with  $|Z| > 2$  is considered an outlier worth inspection. RMSZ is the root-mean-square of all Z scores of the bond lengths (or angles).

Mol	Type	Chain	Res	Link	Bond lengths			Bond angles		
					Counts	RMSZ	# Z  > 2	Counts	RMSZ	# Z  > 2
2	COA	A	1166	-	40,50,50	1.59	5 (12%)	50,75,75	2.47	12 (24%)
3	EDO	A	1167	-	3,3,3	0.67	0	2,2,2	0.10	0
4	16G	A	1168	-	19,19,19	1.41	3 (15%)	23,28,28	1.63	4 (17%)
2	COA	B	1166	-	40,50,50	1.74	7 (17%)	50,75,75	4.14	11 (22%)
4	16G	B	1167	-	19,19,19	1.73	4 (21%)	23,28,28	1.65	6 (26%)
3	EDO	B	1168	-	3,3,3	0.33	0	2,2,2	0.83	0

In the following table, the Chirals column lists the number of chiral outliers, the number of chiral centers analysed, the number of these observed in the model and the number defined in the chemical component dictionary. Similar counts are reported in the Torsion and Rings columns. '-' means no outliers of that kind were identified.

Mol	Type	Chain	Res	Link	Chirals	Torsions	Rings
2	COA	A	1166	-	-	0/44/64/64	0/3/3/3
3	EDO	A	1167	-	-	0/1/1/1	0/0/0/0
4	16G	A	1168	-	-	0/10/30/30	0/1/1/1
2	COA	B	1166	-	-	0/44/64/64	0/3/3/3
4	16G	B	1167	-	-	0/10/30/30	0/1/1/1
3	EDO	B	1168	-	-	0/1/1/1	0/0/0/0

All (19) bond length outliers are listed below:

Mol	Chain	Res	Type	Atoms	Z	Observed(Å)	Ideal(Å)
2	B	1166	COA	C5A-C4A	-2.23	1.35	1.40
2	B	1166	COA	O6A-CCP	-2.18	1.36	1.43
2	A	1166	COA	O2B-C2B	2.21	1.48	1.43
4	B	1167	16G	O3-C3	2.31	1.48	1.43
4	A	1168	16G	O1-C1	2.43	1.48	1.39
2	B	1166	COA	P3B-O3B	2.65	1.68	1.60
4	A	1168	16G	O5-C1	2.70	1.48	1.43
4	B	1167	16G	C2-N2	2.87	1.50	1.45
2	A	1166	COA	O4B-C1B	3.02	1.45	1.41
4	A	1168	16G	C2-N2	3.18	1.51	1.45
4	B	1167	16G	C8-C7	3.19	1.57	1.50
2	B	1166	COA	P3B-O8A	3.23	1.66	1.54
4	B	1167	16G	P-O1P	3.47	1.62	1.51
2	A	1166	COA	C2A-N1A	3.93	1.41	1.33
2	B	1166	COA	O4B-C1B	4.08	1.46	1.41
2	A	1166	COA	C2A-N3A	4.14	1.39	1.32
2	A	1166	COA	P3B-O7A	4.15	1.64	1.51
2	B	1166	COA	C2A-N1A	4.75	1.42	1.33

*Continued on next page...*

*Continued from previous page...*

Mol	Chain	Res	Type	Atoms	Z	Observed(Å)	Ideal(Å)
2	B	1166	COA	C2A-N3A	4.91	1.40	1.32

All (33) bond angle outliers are listed below:

Mol	Chain	Res	Type	Atoms	Z	Observed(°)	Ideal(°)
2	B	1166	COA	N3A-C2A-N1A	-15.95	116.68	128.89
2	B	1166	COA	CEP-CBP-CCP	-13.35	91.20	108.50
2	A	1166	COA	N3A-C2A-N1A	-12.06	119.66	128.89
2	A	1166	COA	O4B-C1B-N9A	-6.84	93.78	108.10
2	B	1166	COA	O3A-P2A-O6A	-6.15	86.63	102.94
2	B	1166	COA	O3B-P3B-O7A	-3.56	98.21	107.11
2	A	1166	COA	OAP-CAP-C9P	-3.54	102.27	110.38
2	A	1166	COA	P2A-O3A-P1A	-3.44	123.08	132.73
2	A	1166	COA	O6A-CCP-CBP	-3.25	105.33	110.55
2	B	1166	COA	O5B-P1A-O1A	-3.04	97.82	109.62
4	B	1167	16G	C4-C3-C2	-3.02	106.24	110.43
2	B	1166	COA	C4A-C5A-N7A	-3.02	106.70	109.48
2	B	1166	COA	C1B-N9A-C4A	-2.96	122.48	126.94
4	B	1167	16G	O5-C5-C6	-2.92	100.64	106.61
2	A	1166	COA	C7P-N8P-C9P	-2.84	116.92	122.53
4	B	1167	16G	O6-P-O1P	-2.74	100.17	107.14
2	A	1166	COA	O3B-C3B-C4B	-2.35	100.75	109.99
2	A	1166	COA	C2P-C3P-N4P	-2.35	107.74	112.37
2	A	1166	COA	O3A-P2A-O6A	-2.33	96.75	102.94
2	B	1166	COA	C7P-N8P-C9P	-2.31	117.97	122.53
4	A	1168	16G	O3P-P-O1P	-2.26	103.29	110.58
4	B	1167	16G	O4-C4-C3	-2.14	105.53	110.34
4	A	1168	16G	O3P-P-O2P	2.14	115.53	107.38
4	B	1167	16G	O3P-P-O6	2.48	113.70	106.56
2	A	1166	COA	O5A-P2A-O3A	2.63	117.03	105.09
2	A	1166	COA	CDP-CBP-CCP	2.80	112.13	108.50
2	A	1166	COA	O9A-P3B-O8A	2.85	118.22	107.38
2	B	1166	COA	CEP-CBP-CAP	3.17	115.14	109.34
4	B	1167	16G	O3P-P-O2P	3.42	120.41	107.38
4	A	1168	16G	O3P-P-O6	3.78	117.45	106.56
4	A	1168	16G	C1-O5-C5	3.80	120.50	113.47
2	B	1166	COA	O6A-CCP-CBP	6.78	121.45	110.55
2	B	1166	COA	CDP-CBP-CCP	15.52	128.62	108.50

There are no chirality outliers.

There are no torsion outliers.

There are no ring outliers.

3 monomers are involved in 15 short contacts:

Mol	Chain	Res	Type	Clashes	Symm-Clashes
2	A	1166	COA	11	0
3	A	1167	EDO	1	0
3	B	1168	EDO	3	0

## 5.7 Other polymers [i](#)

There are no such residues in this entry.

## 5.8 Polymer linkage issues [i](#)

There are no chain breaks in this entry.

## 6 Fit of model and data [i](#)

### 6.1 Protein, DNA and RNA chains [i](#)

In the following table, the column labelled ‘#RSRZ> 2’ contains the number (and percentage) of RSRZ outliers, followed by percent RSRZ outliers for the chain as percentile scores relative to all X-ray entries and entries of similar resolution. The OWAB column contains the minimum, median, 95<sup>th</sup> percentile and maximum values of the occupancy-weighted average B-factor per residue. The column labelled ‘Q< 0.9’ lists the number of (and percentage) of residues with an average occupancy less than 0.9.

Mol	Chain	Analysed	<RSRZ>	#RSRZ>2	OWAB(Å <sup>2</sup> )	Q<0.9
1	A	164/165 (99%)	0.12	6 (3%) 45 51	18, 28, 53, 92	0
1	B	164/165 (99%)	-0.01	3 (1%) 71 78	17, 24, 41, 75	1 (0%)
All	All	328/330 (99%)	0.05	9 (2%) 58 64	17, 26, 50, 92	1 (0%)

All (9) RSRZ outliers are listed below:

Mol	Chain	Res	Type	RSRZ
1	A	76	SER	3.4
1	A	17	ASN	3.2
1	A	16	SER	3.1
1	A	20	ASP	3.0
1	B	77	ASN	2.9
1	B	17	ASN	2.8
1	A	114	ARG	2.6
1	B	15	PRO	2.3
1	A	18	LEU	2.1

### 6.2 Non-standard residues in protein, DNA, RNA chains [i](#)

There are no non-standard protein/DNA/RNA residues in this entry.

### 6.3 Carbohydrates [i](#)

There are no carbohydrates in this entry.

### 6.4 Ligands [i](#)

In the following table, the Atoms column lists the number of modelled atoms in the group and the number defined in the chemical component dictionary. LLDF column lists the quality of electron



density of the group with respect to its neighbouring residues in protein, DNA or RNA chains. The B-factors column lists the minimum, median, 95<sup>th</sup> percentile and maximum values of B factors of atoms in the group. The column labelled 'Q< 0.9' lists the number of atoms with occupancy less than 0.9.

Mol	Type	Chain	Res	Atoms	RSCC	RSR	LLDF	B-factors(Å <sup>2</sup> )	Q<0.9
2	COA	A	1166	48/48	0.89	0.15	0.55	31,47,73,96	0
2	COA	B	1166	48/48	0.92	0.13	0.42	28,35,41,43	0
3	EDO	A	1167	4/4	0.97	0.08	0.39	23,24,28,29	0
4	16G	A	1168	19/19	0.97	0.07	-1.04	23,26,33,35	0
3	EDO	B	1168	4/4	0.98	0.07	-1.09	22,24,27,31	0
4	16G	B	1167	19/19	0.97	0.07	-1.12	20,22,29,29	0

## 6.5 Other polymers

There are no such residues in this entry.