



Full wwPDB X-ray Structure Validation Report ⓘ

Jan 31, 2016 – 06:23 PM GMT

PDB ID : 1AHP
Title : OLIGOSACCHARIDE SUBSTRATE BINDING IN ESCHERICHIA COLI
MALTODEXTRIN PHSPHORYLASE
Authors : O'Reilly, M.; Watson, K.A.; Schinzel, R.; Palm, D.; Johnson, L.N.
Deposited on : 1997-04-10
Resolution : 3.00 Å(reported)

This is a Full wwPDB X-ray Structure Validation Report for a publicly released PDB entry.
We welcome your comments at validation@mail.wwpdb.org
A user guide is available at
<http://wwpdb.org/validation/2016/XrayValidationReportHelp>
with specific help available everywhere you see the ⓘ symbol.

The following versions of software and data (see [references ⓘ](#)) were used in the production of this report:

MolProbity : 4.02b-467
Mogul : 1.7 (RC4), CSD as536be (2015)
Xtriage (Phenix) : 1.9-1692
EDS : rb-20026688
Percentile statistics : 20151230.v01 (using entries in the PDB archive December 30th 2015)
Refmac : 5.8.0135
CCP4 : 6.5.0
Ideal geometry (proteins) : Engh & Huber (2001)
Ideal geometry (DNA, RNA) : Parkinson et al. (1996)
Validation Pipeline (wwPDB-VP) : trunk26865

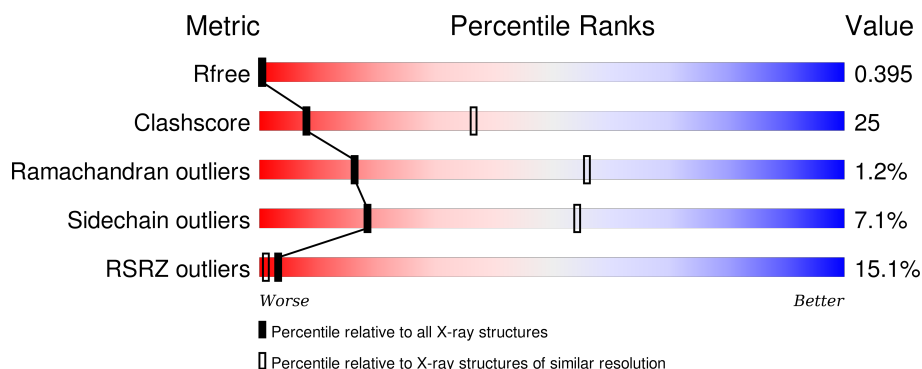
1 Overall quality at a glance

The following experimental techniques were used to determine the structure:

X-RAY DIFFRACTION

The reported resolution of this entry is 3.00 Å.

Percentile scores (ranging between 0-100) for global validation metrics of the entry are shown in the following graphic. The table shows the number of entries on which the scores are based.



Metric	Whole archive (#Entries)	Similar resolution (#Entries, resolution range(Å))
R_{free}	91344	1578 (3.00-3.00)
Clashscore	102246	1912 (3.00-3.00)
Ramachandran outliers	100387	1853 (3.00-3.00)
Sidechain outliers	100360	1856 (3.00-3.00)
RSRZ outliers	91569	1592 (3.00-3.00)

The table below summarises the geometric issues observed across the polymeric chains and their fit to the electron density. The red, orange, yellow and green segments on the lower bar indicate the fraction of residues that contain outliers for ≥ 3 , 2, 1 and 0 types of geometric quality criteria. A grey segment represents the fraction of residues that are not modelled. The numeric value for each fraction is indicated below the corresponding segment, with a dot representing fractions $\leq 5\%$. The upper red bar (where present) indicates the fraction of residues that have poor fit to the electron density. The numeric value is given above the bar.

Mol	Chain	Length	Quality of chain
1	A	797	<div> <div>5%</div> <div>56%</div> <div>39%</div> <div>.</div> </div>
1	B	797	<div> <div>25%</div> <div>57%</div> <div>39%</div> <div>.</div> </div>

The following table lists non-polymeric compounds, carbohydrate monomers and non-standard residues in protein, DNA, RNA chains that are outliers for geometric or electron-density-fit criteria:

Mol	Type	Chain	Res	Chirality	Geometry	Clashes	Electron density
2	MAL	B	1006	-	-	-	X
5	GOL	A	998	-	-	-	X
5	GOL	B	998	-	-	-	X

2 Entry composition

There are 5 unique types of molecules in this entry. The entry contains 12830 atoms, of which 0 are hydrogens and 0 are deuteriums.

In the tables below, the ZeroOcc column contains the number of atoms modelled with zero occupancy, the AltConf column contains the number of residues with at least one atom in alternate conformation and the Trace column contains the number of residues modelled with at most 2 atoms.

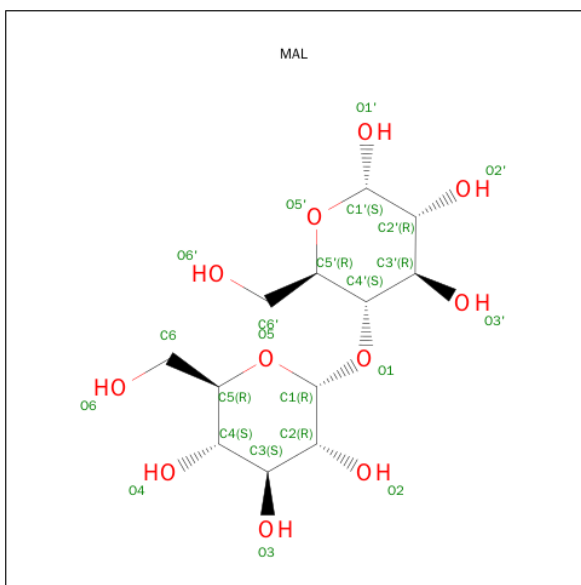
- Molecule 1 is a protein called E.COLI MALTODEXTRIN PHOSPHORYLASE.

Mol	Chain	Residues	Atoms					ZeroOcc	AltConf	Trace
1	A	796	Total	C	N	O	S	0	0	0
			6366	4064	1126	1156	20			
1	B	796	Total	C	N	O	S	0	0	0
			6366	4064	1126	1156	20			

There are 12 discrepancies between the modelled and reference sequences:

Chain	Residue	Modelled	Actual	Comment	Reference
A	112	ALA	ASN	ENGINEERED	UNP P00490
A	184	ALA	LYS	CONFLICT	UNP P00490
A	497	ASP	GLN	CONFLICT	UNP P00490
A	547	ARG	HIS	CONFLICT	UNP P00490
A	681	LYS	GLU	CONFLICT	UNP P00490
A	795	ALA	LYS	CONFLICT	UNP P00490
B	112	ALA	ASN	ENGINEERED	UNP P00490
B	184	ALA	LYS	CONFLICT	UNP P00490
B	497	ASP	GLN	CONFLICT	UNP P00490
B	547	ARG	HIS	CONFLICT	UNP P00490
B	681	LYS	GLU	CONFLICT	UNP P00490
B	795	ALA	LYS	CONFLICT	UNP P00490

- Molecule 2 is SUGAR (MALTOSE) (three-letter code: MAL) (formula: C₁₂H₂₂O₁₁).



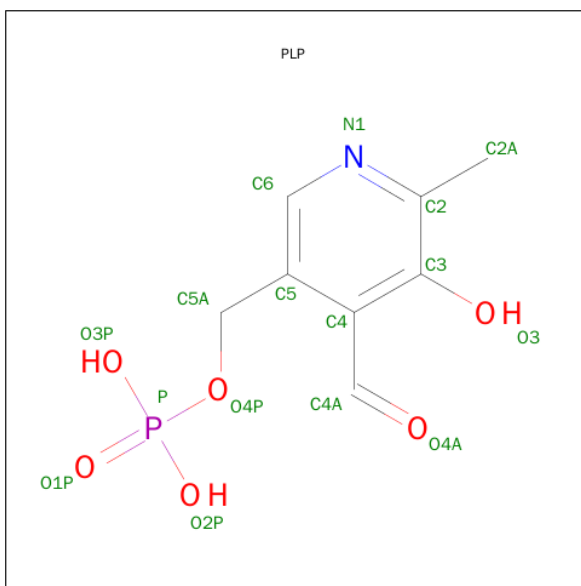
Mol	Chain	Residues	Atoms			ZeroOcc	AltConf
2	A	1	Total	C	O	0	0
			23	12	11		
2	B	1	Total	C	O	0	0
			23	12	11		

- Molecule 3 is SULFATE ION (three-letter code: SO4) (formula: O₄S).



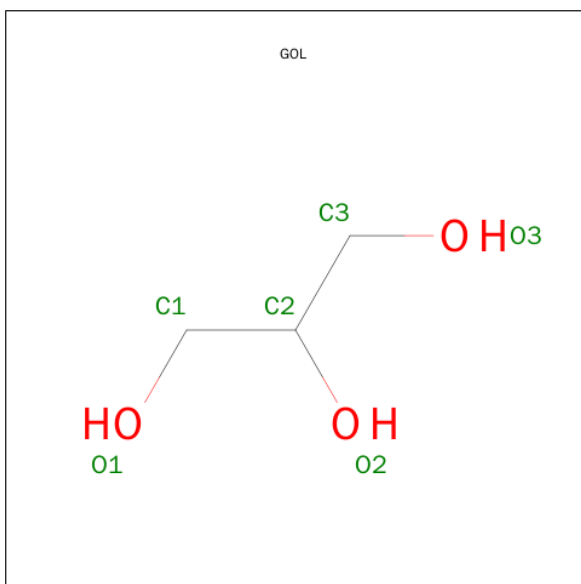
Mol	Chain	Residues	Atoms			ZeroOcc	AltConf
3	A	1	Total	O	S	0	0
			5	4	1		
3	B	1	Total	O	S	0	0
			5	4	1		

- Molecule 4 is PYRIDOXAL-5'-PHOSPHATE (three-letter code: PLP) (formula: $C_8H_{10}NO_6P$).



Mol	Chain	Residues	Atoms					ZeroOcc	AltConf
4	A	1	Total	C	N	O	P	0	0
			15	8	1	5	1		
4	B	1	Total	C	N	O	P	0	0
			15	8	1	5	1		

- Molecule 5 is GLYCEROL (three-letter code: GOL) (formula: $C_3H_8O_3$).



Mol	Chain	Residues	Atoms			ZeroOcc	AltConf
5	A	1	Total	C	O	0	0
			6	3	3		

Continued on next page...

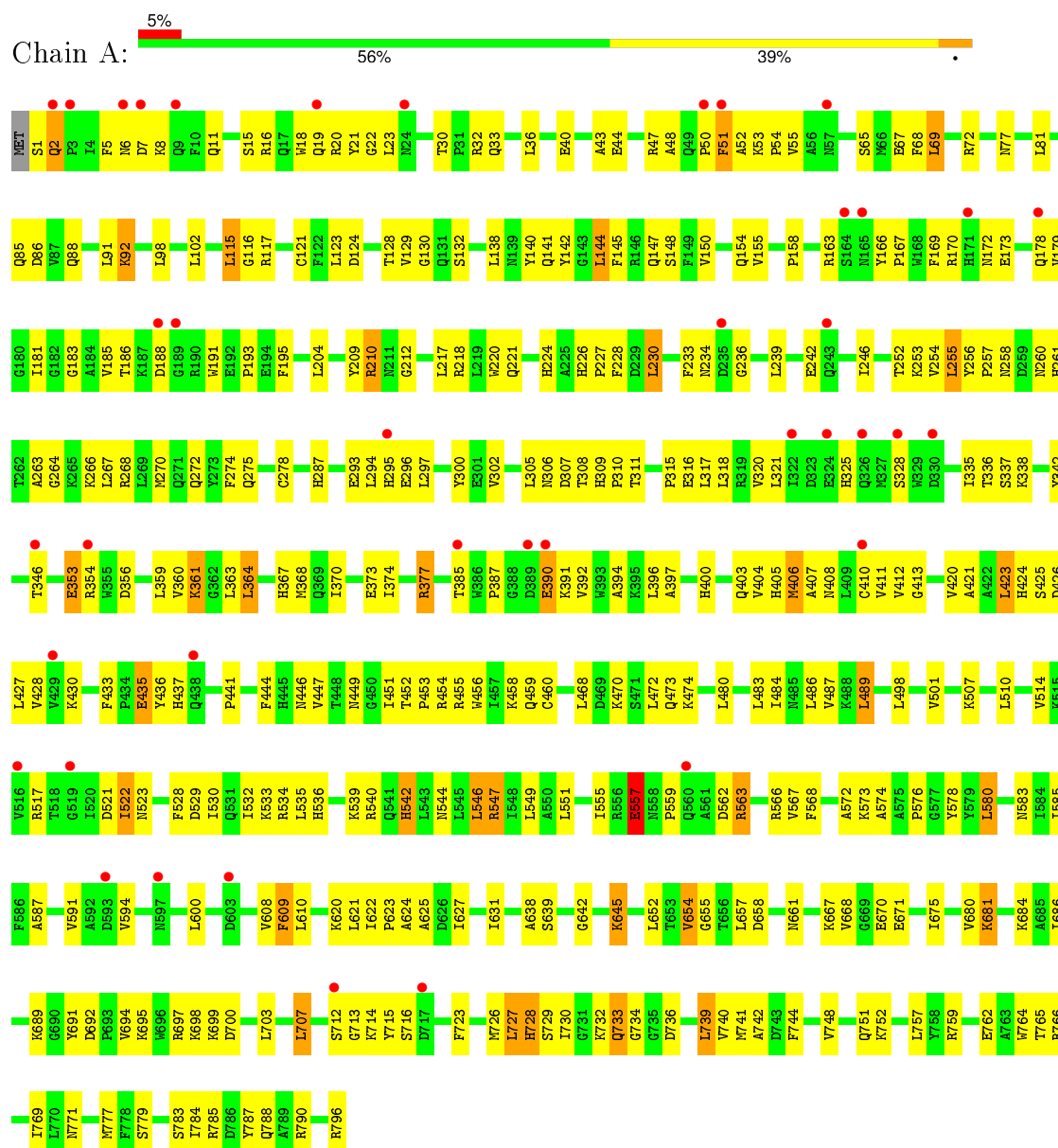
Continued from previous page...

Mol	Chain	Residues	Atoms			ZeroOcc	AltConf
5	B	1	Total	C	O	0	0
			6	3	3		

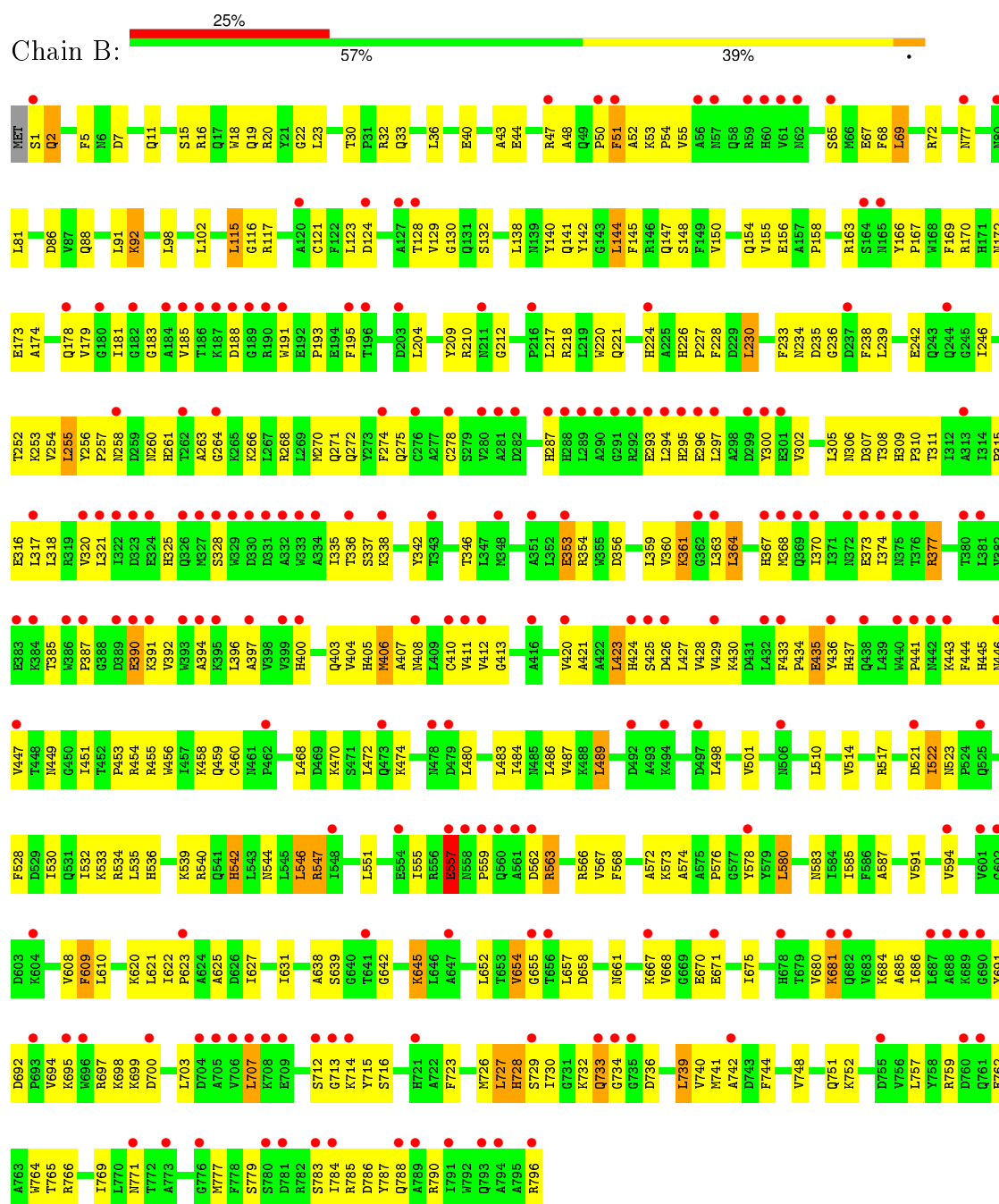
3 Residue-property plots

These plots are drawn for all protein, RNA and DNA chains in the entry. The first graphic for a chain summarises the proportions of errors displayed in the second graphic. The second graphic shows the sequence view annotated by issues in geometry and electron density. Residues are color-coded according to the number of geometric quality criteria for which they contain at least one outlier: green = 0, yellow = 1, orange = 2 and red = 3 or more. A red dot above a residue indicates a poor fit to the electron density ($RSRZ > 2$). Stretches of 2 or more consecutive residues without any outlier are shown as a green connector. Residues present in the sample, but not in the model, are shown in grey.

- Molecule 1: E.COLI MALTODEXTRIN PHOSPHORYLASE



- Molecule 1: E.COLI MALTODEXTRIN PHOSPHORYLASE



4 Data and refinement statistics

Property	Value	Source
Space group	C 1 2 1	Depositor
Cell constants a, b, c, α , β , γ	173.20 Å 112.40 Å 121.70 Å 90.00° 119.70° 90.00°	Depositor
Resolution (Å)	10.00 – 3.00 9.99 – 3.00	Depositor EDS
% Data completeness (in resolution range)	73.0 (10.00-3.00) 73.6 (9.99-3.00)	Depositor EDS
R_{merge}	0.14	Depositor
R_{sym}	(Not available)	Depositor
$\langle I/\sigma(I) \rangle$ ¹	1.39 (at 2.99 Å)	Xtriage
Refinement program	X-PLOR 3.1	Depositor
R, R_{free}	0.232 , 0.278 0.389 , 0.395	Depositor DCC
R_{free} test set	608 reflections (2.09%)	DCC
Wilson B-factor (Å ²)	34.3	Xtriage
Anisotropy	0.277	Xtriage
Bulk solvent k_{sol} (e/Å ³), B_{sol} (Å ²)	0.30 , 55.9	EDS
Estimated twinning fraction	No twinning to report.	Xtriage
L-test for twinning ²	$\langle L \rangle = 0.46$, $\langle L^2 \rangle = 0.29$	Xtriage
Outliers	0 of 29121 reflections	Xtriage
F_o, F_c correlation	0.57	EDS
Total number of atoms	12830	wwPDB-VP
Average B, all atoms (Å ²)	25.0	wwPDB-VP

Xtriage's analysis on translational NCS is as follows: *The largest off-origin peak in the Patterson function is 3.97% of the height of the origin peak. No significant pseudotranslation is detected.*

¹Intensities estimated from amplitudes.

²Theoretical values of $\langle |L| \rangle$, $\langle L^2 \rangle$ for acentric reflections are 0.5, 0.375 respectively for untwinned datasets, and 0.333, 0.2 for perfectly twinned datasets.

5 Model quality [i](#)

5.1 Standard geometry [i](#)

Bond lengths and bond angles in the following residue types are not validated in this section: GOL, SO4, MAL, PLP

The Z score for a bond length (or angle) is the number of standard deviations the observed value is removed from the expected value. A bond length (or angle) with $|Z| > 5$ is considered an outlier worth inspection. RMSZ is the root-mean-square of all Z scores of the bond lengths (or angles).

Mol	Chain	Bond lengths		Bond angles	
		RMSZ	$\# Z > 5$	RMSZ	$\# Z > 5$
1	A	0.40	1/6514 (0.0%)	0.64	1/8837 (0.0%)
1	B	0.40	1/6514 (0.0%)	0.64	1/8837 (0.0%)
All	All	0.40	2/13028 (0.0%)	0.64	2/17674 (0.0%)

All (2) bond length outliers are listed below:

Mol	Chain	Res	Type	Atoms	Z	Observed(Å)	Ideal(Å)
1	B	645	LYS	CE-NZ	-5.32	1.35	1.49
1	A	645	LYS	CE-NZ	-5.31	1.35	1.49

All (2) bond angle outliers are listed below:

Mol	Chain	Res	Type	Atoms	Z	Observed(°)	Ideal(°)
1	A	654	VAL	N-CA-C	-5.21	96.92	111.00
1	B	654	VAL	N-CA-C	-5.20	96.95	111.00

There are no chirality outliers.

There are no planarity outliers.

5.2 Too-close contacts [i](#)

In the following table, the Non-H and H(model) columns list the number of non-hydrogen atoms and hydrogen atoms in the chain respectively. The H(added) column lists the number of hydrogen atoms added and optimized by MolProbity. The Clashes column lists the number of clashes within the asymmetric unit, whereas Symm-Clashes lists symmetry related clashes.

Mol	Chain	Non-H	H(model)	H(added)	Clashes	Symm-Clashes
1	A	6366	0	6326	398	11
1	B	6366	0	6326	394	9

Continued on next page...

Continued from previous page...

Mol	Chain	Non-H	H(model)	H(added)	Clashes	Symm-Clashes
2	A	23	0	21	5	0
2	B	23	0	21	4	0
3	A	5	0	0	1	0
3	B	5	0	0	0	0
4	A	15	0	7	2	0
4	B	15	0	7	2	0
5	A	6	0	8	0	0
5	B	6	0	8	0	0
All	All	12830	0	12724	630	12

The all-atom clashscore is defined as the number of clashes found per 1000 atoms (including hydrogen atoms). The all-atom clashscore for this structure is 25.

All (630) close contacts within the same asymmetric unit are listed below, sorted by their clash magnitude.

Atom-1	Atom-2	Interatomic distance (Å)	Clash overlap (Å)
1:A:170:ARG:CG	1:B:20:ARG:O	1.67	1.40
1:A:158:PRO:HG2	1:B:228:PHE:O	1.49	1.11
1:A:253:LYS:HE3	1:B:242:GLU:OE2	1.54	1.07
1:A:20:ARG:HG3	1:B:47:ARG:CZ	1.84	1.07
1:A:20:ARG:NH1	1:B:40:GLU:OE1	1.91	1.01
1:A:258:ASN:HB3	1:B:234:ASN:O	1.60	1.00
1:A:32:ARG:HB3	1:B:173:GLU:OE2	1.63	0.99
1:A:19:GLN:HB3	1:B:47:ARG:HB3	1.45	0.97
1:A:47:ARG:CZ	1:B:20:ARG:HG3	1.94	0.97
1:A:19:GLN:CD	1:B:47:ARG:O	2.02	0.96
1:A:170:ARG:HG3	1:B:20:ARG:C	1.87	0.96
1:A:258:ASN:CB	1:B:234:ASN:O	2.16	0.94
1:A:47:ARG:HD3	1:B:20:ARG:HA	1.49	0.94
1:A:258:ASN:HB2	1:B:234:ASN:CB	1.97	0.94
1:A:20:ARG:HA	1:B:47:ARG:HD3	1.51	0.92
1:A:158:PRO:CG	1:B:228:PHE:O	2.18	0.90
1:A:261:HIS:NE2	1:B:236:GLY:CA	2.35	0.90
1:B:594:VAL:HG21	1:B:715:TYR:HD1	1.35	0.90
1:A:19:GLN:OE1	1:B:47:ARG:O	1.88	0.90
1:A:594:VAL:HG21	1:A:715:TYR:HD1	1.35	0.90
1:A:170:ARG:HG3	1:B:20:ARG:O	0.71	0.89
1:A:40:GLU:OE1	1:B:20:ARG:NH1	2.06	0.89
1:A:22:GLY:N	1:B:170:ARG:HD2	1.88	0.88
1:A:23:LEU:HD21	1:B:172:ASN:ND2	1.89	0.88
1:A:47:ARG:NH1	1:B:20:ARG:HG3	1.89	0.87

Continued on next page...

Continued from previous page...

Atom-1	Atom-2	Interatomic distance (Å)	Clash overlap (Å)
1:A:228:PHE:O	1:B:158:PRO:HG2	1.75	0.86
1:A:246:ILE:HD11	1:B:246:ILE:HD11	1.58	0.85
1:A:20:ARG:HG3	1:B:47:ARG:NH1	1.91	0.85
1:A:145:PHE:HB3	1:B:230:LEU:HD11	1.59	0.85
1:A:254:VAL:CG2	1:B:228:PHE:CZ	2.60	0.84
1:B:535:LEU:HB2	1:B:572:ALA:HB1	1.59	0.84
1:A:32:ARG:HD3	1:B:173:GLU:OE1	1.77	0.84
1:A:48:ALA:HA	1:B:19:GLN:OE1	1.77	0.83
1:A:535:LEU:HB2	1:A:572:ALA:HB1	1.59	0.83
1:A:142:TYR:OH	1:B:227:PRO:HG2	1.80	0.81
1:B:144:LEU:HD11	1:B:573:LYS:HE3	1.63	0.81
1:A:594:VAL:HG21	1:A:715:TYR:CD1	2.16	0.81
1:A:144:LEU:HD11	1:A:573:LYS:HE3	1.63	0.81
1:A:19:GLN:OE1	1:B:48:ALA:HA	1.81	0.80
1:A:236:GLY:CA	1:B:261:HIS:NE2	2.44	0.80
1:A:361:LYS:HD2	1:A:368:MET:HG2	1.63	0.80
1:B:361:LYS:HD2	1:B:368:MET:HG2	1.63	0.80
1:A:254:VAL:HG23	1:B:228:PHE:CZ	2.16	0.79
1:A:32:ARG:HG2	1:B:173:GLU:OE1	1.83	0.79
1:A:242:GLU:OE2	1:B:253:LYS:HE3	1.82	0.79
1:B:594:VAL:HG21	1:B:715:TYR:CD1	2.16	0.78
1:A:32:ARG:CG	1:B:173:GLU:OE1	2.32	0.77
1:A:115:LEU:HD12	2:A:1006:MAL:H2	1.67	0.77
1:B:423:LEU:HD22	1:B:423:LEU:H	1.50	0.77
1:A:258:ASN:CB	1:B:234:ASN:CA	2.63	0.76
1:A:16:ARG:NH1	1:B:16:ARG:NH1	2.34	0.76
1:A:423:LEU:H	1:A:423:LEU:HD22	1.50	0.76
1:A:22:GLY:CA	1:B:170:ARG:HD2	2.15	0.76
1:B:522:ILE:HG13	1:B:567:VAL:HG11	1.68	0.75
1:A:522:ILE:HG13	1:A:567:VAL:HG11	1.68	0.75
1:A:258:ASN:HB2	1:B:234:ASN:CA	2.15	0.75
1:A:253:LYS:CE	1:B:242:GLU:OE2	2.33	0.75
1:A:55:VAL:HG23	1:A:130:GLY:HA3	1.68	0.75
1:A:535:LEU:HD13	1:A:585:ILE:HG12	1.69	0.75
1:B:55:VAL:HG23	1:B:130:GLY:HA3	1.68	0.75
1:B:115:LEU:HD12	2:B:1006:MAL:H2	1.66	0.75
1:A:309:HIS:HB2	1:A:310:PRO:HD3	1.70	0.73
1:A:258:ASN:CG	1:B:234:ASN:O	2.27	0.73
1:B:535:LEU:HD13	1:B:585:ILE:HG12	1.69	0.73
1:A:261:HIS:NE2	1:B:236:GLY:HA3	2.02	0.73
1:A:258:ASN:HB3	1:B:234:ASN:C	2.07	0.73

Continued on next page...

Continued from previous page...

Atom-1	Atom-2	Interatomic distance (Å)	Clash overlap (Å)
1:A:258:ASN:CB	1:B:234:ASN:HA	2.19	0.73
1:B:309:HIS:HB2	1:B:310:PRO:HD3	1.70	0.72
1:A:32:ARG:CD	1:B:173:GLU:OE1	2.37	0.72
1:A:145:PHE:HB3	1:B:230:LEU:CD1	2.19	0.71
1:A:230:LEU:HD11	1:B:145:PHE:HB3	1.72	0.71
1:A:16:ARG:HD3	1:B:44:GLU:CG	2.20	0.71
1:B:658:ASP:O	1:B:661:ASN:HB2	1.91	0.71
1:A:258:ASN:HB2	1:B:234:ASN:HB3	1.71	0.71
1:A:47:ARG:HH12	1:B:20:ARG:NH1	1.89	0.70
1:A:19:GLN:OE1	1:B:47:ARG:C	2.31	0.69
1:A:547:ARG:HH22	1:A:551:LEU:HB2	1.57	0.69
1:B:530:ILE:HD12	1:B:625:ALA:HB2	1.73	0.69
1:A:658:ASP:O	1:A:661:ASN:HB2	1.91	0.69
1:B:547:ARG:HH22	1:B:551:LEU:HB2	1.57	0.69
1:A:254:VAL:CG2	1:B:228:PHE:HZ	2.04	0.68
1:A:254:VAL:HG21	1:B:228:PHE:HZ	1.58	0.68
1:A:700:ASP:HB3	1:A:703:LEU:HB3	1.76	0.68
1:A:305:LEU:HD22	1:A:310:PRO:HB2	1.75	0.68
1:A:261:HIS:CD2	1:B:236:GLY:HA3	2.28	0.68
1:B:305:LEU:HD22	1:B:310:PRO:HB2	1.75	0.68
1:A:230:LEU:CD1	1:B:156:GLU:HB3	2.23	0.68
1:A:530:ILE:HD12	1:A:625:ALA:HB2	1.74	0.68
1:B:308:THR:OG1	1:B:353:GLU:HG3	1.94	0.68
1:A:308:THR:OG1	1:A:353:GLU:HG3	1.94	0.67
1:A:261:HIS:CE1	1:B:235:ASP:C	2.68	0.67
1:A:573:LYS:NZ	2:A:1006:MAL:O6'	2.27	0.67
1:A:254:VAL:HG21	1:B:228:PHE:CZ	2.28	0.67
1:B:700:ASP:HB3	1:B:703:LEU:HB3	1.75	0.67
1:A:510:LEU:HD11	1:A:621:LEU:HD23	1.77	0.67
1:B:573:LYS:NZ	2:B:1006:MAL:O6'	2.27	0.67
1:A:757:LEU:HG	1:A:764:TRP:HE3	1.60	0.67
1:A:258:ASN:HB3	1:B:234:ASN:CA	2.25	0.66
1:A:224:HIS:CD2	1:A:226:HIS:H	2.13	0.66
1:B:115:LEU:HD12	2:B:1006:MAL:C2	2.25	0.66
1:B:551:LEU:O	1:B:555:ILE:HG13	1.96	0.66
1:A:730:ILE:HA	1:A:736:ASP:HB2	1.78	0.66
1:B:224:HIS:CD2	1:B:226:HIS:H	2.13	0.66
1:A:551:LEU:O	1:A:555:ILE:HG13	1.96	0.66
1:A:47:ARG:O	1:B:19:GLN:OE1	2.15	0.65
1:A:739:LEU:HB3	1:A:742:ALA:HB3	1.77	0.65
1:B:183:GLY:HA3	1:B:193:PRO:HA	1.79	0.65

Continued on next page...

Continued from previous page...

Atom-1	Atom-2	Interatomic distance (Å)	Clash overlap (Å)
1:A:267:LEU:HD22	1:B:238:PHE:CZ	2.32	0.65
1:A:20:ARG:CA	1:B:47:ARG:HD3	2.24	0.65
1:B:739:LEU:HB3	1:B:742:ALA:HB3	1.77	0.65
1:A:115:LEU:HD12	2:A:1006:MAL:C2	2.26	0.65
1:A:228:PHE:HD2	1:B:158:PRO:HG3	1.60	0.65
1:A:183:GLY:HA3	1:A:193:PRO:HA	1.78	0.65
1:B:533:LYS:HD3	1:B:539:LYS:HD3	1.79	0.65
1:A:533:LYS:HD3	1:A:539:LYS:HD3	1.79	0.65
1:A:765:THR:O	1:A:769:ILE:HG13	1.97	0.65
1:B:510:LEU:HD11	1:B:621:LEU:HD23	1.77	0.65
1:B:757:LEU:HG	1:B:764:TRP:HE3	1.60	0.65
1:A:258:ASN:N	1:B:234:ASN:OD1	2.29	0.65
1:B:730:ILE:HA	1:B:736:ASP:HB2	1.78	0.64
1:A:236:GLY:HA2	1:B:261:HIS:NE2	2.12	0.64
1:A:246:ILE:HG21	1:B:239:LEU:HD12	1.80	0.63
1:B:765:THR:O	1:B:769:ILE:HG13	1.97	0.63
1:A:360:VAL:HG11	1:A:404:VAL:HG21	1.80	0.63
1:A:532:ILE:HG21	1:A:621:LEU:HD13	1.80	0.63
1:A:236:GLY:HA3	1:B:261:HIS:NE2	2.14	0.63
1:B:423:LEU:O	1:B:427:LEU:HD12	1.99	0.63
1:B:532:ILE:HG21	1:B:621:LEU:HD13	1.80	0.63
1:B:360:VAL:HG11	1:B:404:VAL:HG21	1.80	0.63
1:A:20:ARG:NH1	1:B:47:ARG:HH12	1.97	0.62
1:A:423:LEU:O	1:A:427:LEU:HD12	1.99	0.62
1:B:53:LYS:HE2	1:B:54:PRO:HD2	1.81	0.62
1:A:16:ARG:HD3	1:B:44:GLU:HG2	1.79	0.62
1:A:20:ARG:HA	1:B:47:ARG:CD	2.25	0.62
1:A:542:HIS:CD2	1:A:542:HIS:H	2.18	0.62
1:B:433:PHE:HB2	1:B:444:PHE:HE2	1.64	0.62
1:B:437:HIS:CD2	1:B:441:PRO:HA	2.35	0.62
1:B:587:ALA:O	1:B:591:VAL:HG13	2.00	0.62
1:A:437:HIS:CD2	1:A:441:PRO:HA	2.34	0.62
1:A:258:ASN:HB3	1:B:234:ASN:HA	1.80	0.61
1:A:53:LYS:HE2	1:A:54:PRO:HD2	1.81	0.61
1:A:385:THR:O	1:A:387:PRO:HD3	2.00	0.61
1:A:69:LEU:HD21	4:A:999:PLP:H2A3	1.82	0.61
1:B:667:LYS:HE3	1:B:777:MET:SD	2.40	0.61
1:B:69:LEU:HD21	4:B:999:PLP:H2A3	1.82	0.61
1:A:47:ARG:HB3	1:B:19:GLN:HB3	1.82	0.61
1:A:667:LYS:HE3	1:A:777:MET:SD	2.40	0.61
1:B:385:THR:O	1:B:387:PRO:HD3	2.00	0.61

Continued on next page...

Continued from previous page...

Atom-1	Atom-2	Interatomic distance (Å)	Clash overlap (Å)
1:B:681:LYS:HA	1:B:681:LYS:HE2	1.83	0.61
1:A:20:ARG:CZ	1:B:47:ARG:HH12	2.14	0.61
1:A:173:GLU:OE1	1:B:32:ARG:HD3	2.01	0.61
1:A:433:PHE:HB2	1:A:444:PHE:HE2	1.64	0.61
1:A:267:LEU:HD21	1:B:233:PHE:CZ	2.35	0.60
1:A:261:HIS:HD2	1:A:263:ALA:HB3	1.66	0.60
1:A:587:ALA:O	1:A:591:VAL:HG13	2.00	0.60
1:B:547:ARG:CD	1:B:751:GLN:HG3	2.31	0.60
1:B:484:ILE:O	1:B:487:VAL:HG22	2.01	0.60
1:B:542:HIS:H	1:B:542:HIS:CD2	2.18	0.60
1:B:98:LEU:O	1:B:102:LEU:HG	2.02	0.60
1:A:267:LEU:HD22	1:B:238:PHE:CE1	2.37	0.60
1:A:47:ARG:O	1:B:19:GLN:CD	2.40	0.59
1:A:547:ARG:CD	1:A:751:GLN:HG3	2.31	0.59
1:A:484:ILE:O	1:A:487:VAL:HG22	2.01	0.59
1:B:261:HIS:HD2	1:B:263:ALA:HB3	1.65	0.59
1:B:686:ILE:HG22	1:B:691:TYR:HB2	1.85	0.59
1:B:691:TYR:OH	1:B:741:MET:HB2	2.03	0.59
1:A:315:PRO:HA	1:A:318:LEU:HD12	1.85	0.59
1:A:691:TYR:OH	1:A:741:MET:HB2	2.03	0.59
1:B:91:LEU:HD12	1:B:98:LEU:HD13	1.84	0.59
1:B:315:PRO:HA	1:B:318:LEU:HD12	1.85	0.59
1:A:420:VAL:HG23	1:A:639:SER:HB2	1.85	0.59
1:A:655:GLY:O	1:A:675:ILE:HA	2.03	0.59
1:A:681:LYS:HE2	1:A:681:LYS:HA	1.83	0.59
1:A:686:ILE:HG22	1:A:691:TYR:HB2	1.85	0.59
1:B:181:ILE:HB	1:B:195:PHE:HB3	1.85	0.58
1:A:91:LEU:HD12	1:A:98:LEU:HD13	1.84	0.58
1:A:19:GLN:OE1	1:B:48:ALA:CA	2.50	0.58
1:A:181:ILE:HB	1:A:195:PHE:HB3	1.85	0.58
1:A:234:ASN:HA	1:B:258:ASN:CB	2.33	0.58
1:B:655:GLY:O	1:B:675:ILE:HA	2.03	0.58
1:B:420:VAL:HG23	1:B:639:SER:HB2	1.85	0.58
1:A:98:LEU:O	1:A:102:LEU:HG	2.02	0.58
1:B:311:THR:HG21	1:B:406:MET:HE2	1.86	0.58
1:B:420:VAL:H	1:B:424:HIS:HD2	1.51	0.58
1:A:311:THR:HG21	1:A:406:MET:HE2	1.86	0.58
1:A:258:ASN:HB2	1:B:234:ASN:CG	2.23	0.57
1:A:420:VAL:H	1:A:424:HIS:HD2	1.51	0.57
1:A:234:ASN:HA	1:B:258:ASN:HB2	1.87	0.57
1:A:739:LEU:HD23	1:A:739:LEU:N	2.20	0.57

Continued on next page...

Continued from previous page...

Atom-1	Atom-2	Interatomic distance (Å)	Clash overlap (Å)
1:A:16:ARG:HD3	1:B:44:GLU:CD	2.24	0.57
1:A:657:LEU:HG	1:A:675:ILE:HG21	1.87	0.57
1:A:373:GLU:O	1:A:377:ARG:HB2	2.05	0.57
1:B:456:TRP:HA	1:B:460:CYS:SG	2.44	0.57
1:B:268:ARG:O	1:B:272:GLN:HG3	2.05	0.56
1:B:557:GLU:O	1:B:559:PRO:HD3	2.05	0.56
1:A:321:LEU:HD21	1:A:335:ILE:HD12	1.85	0.56
1:B:321:LEU:HD21	1:B:335:ILE:HD12	1.85	0.56
1:A:456:TRP:HA	1:A:460:CYS:SG	2.44	0.56
1:A:268:ARG:O	1:A:272:GLN:HG3	2.05	0.56
1:B:254:VAL:O	1:B:257:PRO:HD3	2.06	0.56
1:A:557:GLU:O	1:A:559:PRO:HD3	2.05	0.56
1:A:246:ILE:HD11	1:B:246:ILE:CD1	2.35	0.56
1:A:254:VAL:O	1:A:257:PRO:HD3	2.06	0.56
1:A:233:PHE:HE2	1:B:257:PRO:HB3	1.69	0.56
1:A:757:LEU:HG	1:A:764:TRP:CE3	2.41	0.56
1:B:739:LEU:HD23	1:B:739:LEU:N	2.20	0.56
1:A:228:PHE:HD2	1:B:158:PRO:CG	2.19	0.56
1:A:234:ASN:ND2	1:B:576:PRO:CB	2.69	0.56
1:B:373:GLU:O	1:B:377:ARG:HB2	2.05	0.56
1:A:316:GLU:HG2	1:A:367:HIS:HE1	1.71	0.56
1:A:166:TYR:HB3	1:A:169:PHE:CD2	2.41	0.56
1:B:166:TYR:HB3	1:B:169:PHE:CD2	2.41	0.55
1:B:610:LEU:HD12	1:B:621:LEU:HD21	1.88	0.55
1:B:498:LEU:HA	1:B:501:VAL:HG22	1.89	0.55
1:A:228:PHE:O	1:B:158:PRO:CG	2.50	0.55
1:A:142:TYR:OH	1:B:227:PRO:CG	2.53	0.55
1:A:261:HIS:NE2	1:B:236:GLY:HA2	2.21	0.55
1:B:321:LEU:HA	1:B:325:HIS:HB2	1.89	0.55
1:A:20:ARG:CG	1:B:47:ARG:NH1	2.68	0.55
1:A:47:ARG:CD	1:B:20:ARG:HA	2.30	0.55
1:A:703:LEU:HD21	1:A:741:MET:SD	2.46	0.55
1:B:703:LEU:HD21	1:B:741:MET:SD	2.46	0.55
1:B:316:GLU:HG2	1:B:367:HIS:HE1	1.71	0.55
1:B:757:LEU:HG	1:B:764:TRP:CE3	2.41	0.55
1:A:321:LEU:HA	1:A:325:HIS:HB2	1.89	0.55
1:A:236:GLY:HA3	1:B:261:HIS:CD2	2.42	0.55
1:A:16:ARG:NH1	1:B:16:ARG:HH11	2.05	0.55
1:B:433:PHE:HB2	1:B:444:PHE:CE2	2.42	0.54
1:B:580:LEU:HD21	1:B:726:MET:HA	1.89	0.54
1:A:444:PHE:CD1	1:A:444:PHE:N	2.74	0.54

Continued on next page...

Continued from previous page...

Atom-1	Atom-2	Interatomic distance (Å)	Clash overlap (Å)
1:B:657:LEU:HG	1:B:675:ILE:HG21	1.87	0.54
1:A:47:ARG:NH1	1:B:20:ARG:CG	2.68	0.54
1:A:261:HIS:NE2	1:B:236:GLY:N	2.54	0.54
1:A:580:LEU:HD21	1:A:726:MET:HA	1.89	0.54
1:B:420:VAL:HB	1:B:449:ASN:ND2	2.22	0.54
1:A:729:SER:HA	1:A:734:GLY:HA3	1.90	0.54
1:A:433:PHE:HB2	1:A:444:PHE:CE2	2.42	0.54
1:A:261:HIS:HE1	1:B:234:ASN:O	1.88	0.54
1:B:534:ARG:HG2	1:B:573:LYS:HD3	1.90	0.54
1:B:444:PHE:CD1	1:B:444:PHE:N	2.74	0.54
1:B:433:PHE:HB3	1:B:436:TYR:HB2	1.90	0.54
1:B:455:ARG:HA	1:B:459:GLN:HB3	1.90	0.54
1:A:455:ARG:HA	1:A:459:GLN:HB3	1.90	0.54
1:A:234:ASN:O	1:B:258:ASN:CB	2.56	0.54
1:A:117:ARG:HD3	1:A:456:TRP:HZ2	1.73	0.54
1:A:498:LEU:HA	1:A:501:VAL:HG22	1.89	0.54
1:A:47:ARG:HD3	1:B:20:ARG:CA	2.33	0.53
1:A:270:MET:HG2	1:A:363:LEU:HD21	1.90	0.53
1:A:420:VAL:HB	1:A:449:ASN:ND2	2.22	0.53
1:A:610:LEU:HD12	1:A:621:LEU:HD21	1.88	0.53
1:A:267:LEU:HD21	1:B:233:PHE:CE2	2.44	0.53
1:B:1:SER:O	1:B:2:GLN:HG2	2.09	0.53
1:B:729:SER:HA	1:B:734:GLY:HA3	1.90	0.53
1:A:172:ASN:ND2	1:B:23:LEU:HD21	2.24	0.53
1:A:534:ARG:HG2	1:A:573:LYS:HD3	1.90	0.52
1:B:270:MET:HG2	1:B:363:LEU:HD21	1.90	0.52
1:B:293:GLU:HG2	1:B:295:HIS:H	1.74	0.52
1:B:117:ARG:HD3	1:B:456:TRP:HZ2	1.73	0.52
1:A:23:LEU:HD21	1:B:172:ASN:HD21	1.73	0.52
1:A:424:HIS:O	1:A:428:VAL:HG23	2.10	0.52
1:A:293:GLU:HB3	1:A:296:GLU:HG2	1.92	0.52
1:B:447:VAL:HG11	1:B:787:TYR:CD2	2.44	0.52
1:A:287:HIS:CE1	1:A:297:LEU:HA	2.45	0.52
1:A:1:SER:O	1:A:2:GLN:HG2	2.09	0.52
1:B:150:VAL:HG23	1:B:155:VAL:HG21	1.92	0.52
1:A:258:ASN:CB	1:B:234:ASN:C	2.72	0.52
1:A:433:PHE:HB3	1:A:436:TYR:HB2	1.90	0.52
1:B:424:HIS:O	1:B:428:VAL:HG23	2.10	0.52
1:A:293:GLU:HG2	1:A:295:HIS:H	1.74	0.52
1:A:576:PRO:CB	1:B:234:ASN:ND2	2.73	0.52
1:B:783:SER:O	1:B:787:TYR:HD2	1.93	0.52

Continued on next page...

Continued from previous page...

Atom-1	Atom-2	Interatomic distance (Å)	Clash overlap (Å)
1:A:48:ALA:CA	1:B:19:GLN:OE1	2.56	0.51
1:A:783:SER:O	1:A:787:TYR:HD2	1.93	0.51
1:B:140:TYR:CE2	1:B:255:LEU:HG	2.45	0.51
1:A:140:TYR:CE2	1:A:255:LEU:HG	2.45	0.51
1:A:20:ARG:CZ	1:B:47:ARG:NH1	2.73	0.51
1:B:453:PRO:HB3	1:B:480:LEU:HD13	1.91	0.51
1:A:16:ARG:CZ	1:B:16:ARG:NH1	2.73	0.51
1:A:230:LEU:HD12	1:B:156:GLU:HB3	1.92	0.51
1:A:2:GLN:HG3	1:A:52:ALA:HB2	1.92	0.51
1:A:453:PRO:HB3	1:A:480:LEU:HD13	1.91	0.51
1:A:44:GLU:CG	1:B:16:ARG:HD3	2.41	0.51
1:B:363:LEU:O	1:B:364:LEU:HD13	2.11	0.51
1:B:115:LEU:HD21	1:B:306:ASN:CG	2.31	0.51
1:A:16:ARG:HH11	1:B:16:ARG:HH11	1.58	0.51
1:B:547:ARG:HD2	1:B:751:GLN:HG3	1.93	0.51
1:B:364:LEU:HB3	1:B:367:HIS:CD2	2.46	0.51
1:A:72:ARG:O	1:A:455:ARG:NH2	2.44	0.51
1:A:447:VAL:HG11	1:A:787:TYR:CD2	2.44	0.51
1:B:287:HIS:CE1	1:B:297:LEU:HA	2.45	0.51
1:A:115:LEU:HD21	1:A:306:ASN:CG	2.31	0.51
1:A:547:ARG:HD2	1:A:751:GLN:HG3	1.93	0.51
1:A:517:ARG:NH2	1:A:610:LEU:HB3	2.26	0.51
1:A:47:ARG:HH12	1:B:20:ARG:CZ	2.23	0.50
1:A:21:TYR:C	1:B:170:ARG:HG2	2.31	0.50
1:A:239:LEU:HD12	1:B:246:ILE:HG21	1.93	0.50
1:B:536:HIS:HB3	1:B:539:LYS:HG3	1.93	0.50
1:A:364:LEU:HB3	1:A:367:HIS:CD2	2.46	0.50
1:B:72:ARG:O	1:B:455:ARG:NH2	2.44	0.50
1:A:5:PHE:CD2	1:A:86:ASP:HB3	2.46	0.50
1:A:150:VAL:HG23	1:A:155:VAL:HG21	1.92	0.50
1:B:293:GLU:HB3	1:B:296:GLU:HG2	1.92	0.50
1:A:534:ARG:O	1:A:539:LYS:HD2	2.11	0.50
1:A:44:GLU:HG2	1:B:16:ARG:HD3	1.92	0.50
1:A:141:GLN:HG3	1:A:142:TYR:CD2	2.46	0.50
1:B:566:ARG:HD2	1:B:568:PHE:CZ	2.47	0.50
1:B:5:PHE:CD2	1:B:86:ASP:HB3	2.46	0.50
1:B:141:GLN:HG3	1:B:142:TYR:CD2	2.46	0.50
1:A:576:PRO:HG2	1:B:234:ASN:HD21	1.77	0.50
1:A:228:PHE:CZ	1:B:254:VAL:CG2	2.95	0.50
1:B:318:LEU:HG	1:B:336:THR:HG21	1.93	0.50
1:B:2:GLN:HG3	1:B:52:ALA:HB2	1.92	0.50

Continued on next page...

Continued from previous page...

Atom-1	Atom-2	Interatomic distance (Å)	Clash overlap (Å)
1:B:138:LEU:HD21	1:B:275:GLN:HB2	1.93	0.50
1:A:67:GLU:O	1:A:116:GLY:HA2	2.12	0.50
1:B:517:ARG:NH2	1:B:610:LEU:HB3	2.26	0.50
1:A:472:LEU:HD21	1:A:486:LEU:HG	1.93	0.50
1:A:228:PHE:CD2	1:B:158:PRO:HG3	2.45	0.50
1:B:423:LEU:CD2	1:B:423:LEU:H	2.23	0.50
1:A:185:VAL:HA	1:A:191:TRP:HA	1.94	0.50
1:A:536:HIS:HB3	1:A:539:LYS:HG3	1.93	0.50
1:A:363:LEU:O	1:A:364:LEU:HD13	2.11	0.50
1:B:7:ASP:O	1:B:11:GLN:HG2	2.12	0.50
1:B:534:ARG:O	1:B:539:LYS:HD2	2.11	0.49
1:A:170:ARG:HD2	1:B:22:GLY:N	2.27	0.49
1:A:733:GLN:H	1:A:733:GLN:CD	2.16	0.49
1:A:566:ARG:HD2	1:A:568:PHE:CZ	2.47	0.49
1:B:472:LEU:HD21	1:B:486:LEU:HG	1.93	0.49
1:A:33:GLN:HE22	1:B:172:ASN:CG	2.15	0.49
1:B:733:GLN:H	1:B:733:GLN:CD	2.16	0.49
1:A:138:LEU:HD21	1:A:275:GLN:HB2	1.93	0.49
1:A:234:ASN:ND2	1:B:576:PRO:HB3	2.27	0.49
1:B:337:SER:HA	1:B:413:GLY:O	2.13	0.49
1:A:234:ASN:O	1:B:258:ASN:HB3	2.13	0.49
1:A:246:ILE:CD1	1:B:246:ILE:HD11	2.38	0.49
1:B:354:ARG:HA	1:B:404:VAL:O	2.13	0.49
1:B:67:GLU:O	1:B:116:GLY:HA2	2.12	0.49
1:A:33:GLN:NE2	1:B:172:ASN:OD1	2.46	0.49
1:A:423:LEU:H	1:A:423:LEU:CD2	2.23	0.49
1:A:318:LEU:HG	1:A:336:THR:HG21	1.94	0.49
1:A:234:ASN:O	1:B:258:ASN:CG	2.50	0.49
1:A:258:ASN:HB2	1:B:234:ASN:HA	1.86	0.49
1:B:535:LEU:HD13	1:B:585:ILE:CG1	2.41	0.49
1:A:7:ASP:O	1:A:11:GLN:HG2	2.12	0.49
1:B:185:VAL:HA	1:B:191:TRP:HA	1.94	0.49
1:A:234:ASN:CA	1:B:258:ASN:HB2	2.42	0.49
1:B:668:VAL:HG11	1:B:771:ASN:OD1	2.13	0.49
1:B:681:LYS:CA	1:B:681:LYS:HE2	2.43	0.48
1:B:15:SER:HA	1:B:18:TRP:NE1	2.28	0.48
1:B:77:ASN:O	1:B:81:LEU:HG	2.14	0.48
1:B:407:ALA:O	1:B:411:VAL:HG23	2.13	0.48
1:A:261:HIS:CE1	1:B:236:GLY:N	2.80	0.48
1:A:230:LEU:HD13	1:B:156:GLU:HB3	1.93	0.48
1:A:681:LYS:HE2	1:A:681:LYS:CA	2.43	0.48

Continued on next page...

Continued from previous page...

Atom-1	Atom-2	Interatomic distance (Å)	Clash overlap (Å)
1:A:77:ASN:O	1:A:81:LEU:HG	2.13	0.48
1:A:15:SER:HA	1:A:18:TRP:NE1	2.28	0.48
1:A:317:LEU:HD23	1:A:336:THR:HG22	1.96	0.48
1:A:342:TYR:HB2	1:A:410:CYS:HB3	1.96	0.48
1:A:668:VAL:HG11	1:A:771:ASN:OD1	2.13	0.48
1:A:242:GLU:OE2	1:B:253:LYS:CE	2.60	0.48
1:A:713:GLY:HA2	1:A:716:SER:OG	2.14	0.48
1:A:583:ASN:HD21	1:A:723:PHE:HA	1.79	0.48
1:B:583:ASN:HD21	1:B:723:PHE:HA	1.79	0.48
1:B:697:ARG:NH2	1:B:707:LEU:HB3	2.29	0.48
1:A:267:LEU:CD2	1:B:238:PHE:CE1	2.97	0.48
1:A:19:GLN:CG	1:B:47:ARG:O	2.62	0.48
1:A:2:GLN:HE22	1:A:50:PRO:HB2	1.79	0.48
1:A:407:ALA:O	1:A:411:VAL:HG23	2.13	0.48
1:B:342:TYR:HB2	1:B:410:CYS:HB3	1.96	0.48
1:A:354:ARG:HA	1:A:404:VAL:O	2.13	0.48
1:A:47:ARG:NH1	1:B:20:ARG:CZ	2.76	0.47
1:A:337:SER:HA	1:A:413:GLY:O	2.13	0.47
1:A:257:PRO:HB3	1:B:233:PHE:CE2	2.49	0.47
1:B:542:HIS:H	1:B:542:HIS:HD2	1.59	0.47
1:B:317:LEU:HD23	1:B:336:THR:HG22	1.96	0.47
1:A:542:HIS:H	1:A:542:HIS:HD2	1.59	0.47
1:B:36:LEU:HD23	1:B:167:PRO:HG3	1.96	0.47
1:A:145:PHE:CB	1:B:230:LEU:CD1	2.90	0.47
1:A:36:LEU:HD23	1:A:167:PRO:HG3	1.97	0.47
1:B:713:GLY:HA2	1:B:716:SER:OG	2.14	0.47
1:B:423:LEU:N	1:B:423:LEU:HD22	2.26	0.47
1:A:117:ARG:HG2	4:A:999:PLP:C4A	2.45	0.47
1:A:697:ARG:NH2	1:A:707:LEU:HB3	2.29	0.47
1:B:523:ASN:O	1:B:528:PHE:HE1	1.98	0.47
1:B:43:ALA:O	1:B:47:ARG:HG3	2.15	0.47
1:A:23:LEU:HD21	1:B:172:ASN:HD22	1.77	0.47
1:B:540:ARG:HA	1:B:542:HIS:CD2	2.50	0.47
1:B:692:ASP:HB3	1:B:695:LYS:HE2	1.97	0.47
1:B:117:ARG:HG2	4:B:999:PLP:C4A	2.45	0.47
1:B:2:GLN:HE22	1:B:50:PRO:HB2	1.79	0.47
1:A:144:LEU:HA	1:A:144:LEU:HD23	1.71	0.47
1:A:311:THR:HG23	1:A:410:CYS:SG	2.55	0.47
1:A:426:ASP:O	1:A:430:LYS:HG2	2.15	0.47
1:A:540:ARG:HA	1:A:542:HIS:CD2	2.50	0.46
1:A:148:SER:OG	1:A:155:VAL:HB	2.15	0.46

Continued on next page...

Continued from previous page...

Atom-1	Atom-2	Interatomic distance (Å)	Clash overlap (Å)
1:A:523:ASN:O	1:A:528:PHE:HE1	1.98	0.46
1:A:170:ARG:HD2	1:B:22:GLY:CA	2.45	0.46
1:A:258:ASN:HD22	1:B:234:ASN:HB3	1.81	0.46
1:B:311:THR:HG23	1:B:410:CYS:SG	2.55	0.46
1:B:346:THR:HA	1:B:638:ALA:HB2	1.98	0.46
1:A:532:ILE:O	1:A:532:ILE:HG13	2.16	0.46
1:A:642:GLY:HA2	1:A:645:LYS:HD2	1.98	0.46
1:B:2:GLN:HB2	1:B:212:GLY:HA3	1.98	0.46
1:A:480:LEU:HD22	1:A:779:SER:HB2	1.98	0.46
1:A:227:PRO:HG2	1:B:142:TYR:OH	2.15	0.46
1:B:129:VAL:HG13	1:B:785:ARG:CZ	2.46	0.46
1:B:654:VAL:HG11	1:B:751:GLN:NE2	2.31	0.46
1:A:354:ARG:HD3	1:A:403:GLN:OE1	2.15	0.46
1:B:354:ARG:HD3	1:B:403:GLN:OE1	2.15	0.46
1:A:2:GLN:HB2	1:A:212:GLY:HA3	1.98	0.46
1:B:148:SER:OG	1:B:155:VAL:HB	2.15	0.46
1:B:480:LEU:CD2	1:B:779:SER:HB2	2.46	0.46
1:A:692:ASP:HB3	1:A:695:LYS:HE2	1.97	0.46
1:B:426:ASP:O	1:B:430:LYS:HG2	2.15	0.46
1:A:158:PRO:HG3	1:B:228:PHE:O	2.10	0.46
1:B:338:LYS:HE2	1:B:338:LYS:HB3	1.77	0.46
1:A:115:LEU:HD21	1:A:306:ASN:ND2	2.31	0.46
1:A:681:LYS:HE2	1:A:681:LYS:O	2.16	0.46
1:A:43:ALA:O	1:A:47:ARG:HG3	2.15	0.45
1:A:246:ILE:CD1	1:B:239:LEU:HD12	2.46	0.45
1:B:681:LYS:O	1:B:681:LYS:HE2	2.16	0.45
1:B:480:LEU:HD22	1:B:779:SER:HB2	1.98	0.45
1:A:390:GLU:HG2	1:A:394:ALA:HB2	1.98	0.45
1:A:405:HIS:N	1:A:405:HIS:CD2	2.84	0.45
1:A:293:GLU:CD	1:A:295:HIS:HB2	2.37	0.45
1:B:209:TYR:OH	1:B:458:LYS:HE2	2.16	0.45
1:A:397:ALA:O	1:A:400:HIS:ND1	2.49	0.45
1:A:16:ARG:NH1	1:B:16:ARG:CZ	2.79	0.45
1:A:423:LEU:HD22	1:A:423:LEU:N	2.26	0.45
1:B:532:ILE:HG13	1:B:532:ILE:O	2.16	0.45
1:B:356:ASP:HA	1:B:403:GLN:HG2	1.98	0.45
1:A:129:VAL:HG13	1:A:785:ARG:CZ	2.46	0.45
1:A:654:VAL:HG11	1:A:751:GLN:NE2	2.31	0.45
1:B:293:GLU:CD	1:B:295:HIS:HB2	2.37	0.45
1:A:480:LEU:CD2	1:A:779:SER:HB2	2.46	0.45
1:B:221:GLN:HA	1:B:252:THR:HG21	1.99	0.45

Continued on next page...

Continued from previous page...

Atom-1	Atom-2	Interatomic distance (Å)	Clash overlap (Å)
1:A:209:TYR:OH	1:A:458:LYS:HE2	2.16	0.45
1:B:390:GLU:HG2	1:B:394:ALA:HB2	1.98	0.45
1:A:221:GLN:HA	1:A:252:THR:HG21	1.99	0.45
1:A:228:PHE:HZ	1:B:254:VAL:HG21	1.81	0.45
1:B:144:LEU:HA	1:B:144:LEU:HD23	1.71	0.45
1:B:115:LEU:HD21	1:B:306:ASN:ND2	2.31	0.45
1:A:406:MET:CE	1:A:406:MET:HA	2.47	0.45
1:B:405:HIS:N	1:B:405:HIS:CD2	2.84	0.45
1:A:234:ASN:HA	1:B:258:ASN:HB3	1.98	0.45
1:B:406:MET:CE	1:B:406:MET:HA	2.47	0.45
1:B:642:GLY:HA2	1:B:645:LYS:HD2	1.98	0.45
1:A:267:LEU:CD2	1:B:238:PHE:CZ	3.00	0.45
1:A:141:GLN:HG3	1:A:142:TYR:CE2	2.52	0.45
1:A:356:ASP:HA	1:A:403:GLN:HG2	1.98	0.45
1:B:542:HIS:N	1:B:542:HIS:CD2	2.85	0.45
1:A:166:TYR:HA	1:A:167:PRO:HD3	1.75	0.45
1:B:141:GLN:HG3	1:B:142:TYR:CE2	2.52	0.45
1:A:346:THR:HA	1:A:638:ALA:HB2	1.98	0.45
1:A:535:LEU:HD13	1:A:585:ILE:CG1	2.41	0.44
1:B:266:LYS:HE3	1:B:363:LEU:HD13	1.99	0.44
1:B:397:ALA:O	1:B:400:HIS:CE1	2.70	0.44
1:B:397:ALA:O	1:B:400:HIS:ND1	2.49	0.44
1:A:627:ILE:HG23	1:A:654:VAL:HG23	2.00	0.44
1:A:311:THR:CG2	1:A:406:MET:HE2	2.47	0.44
1:A:30:THR:CG2	1:B:174:ALA:HB2	2.47	0.44
1:A:338:LYS:HB3	1:A:338:LYS:HE2	1.77	0.44
1:A:1:SER:N	1:A:210:ARG:O	2.47	0.44
1:B:396:LEU:HD21	1:B:435:GLU:HG3	1.99	0.44
1:B:563:ARG:HH12	1:B:752:LYS:HA	1.82	0.44
1:B:480:LEU:O	1:B:483:LEU:HD13	2.18	0.44
1:A:563:ARG:HH12	1:A:752:LYS:HA	1.82	0.44
1:B:408:ASN:O	1:B:412:VAL:HG23	2.18	0.44
1:A:257:PRO:HB3	1:B:233:PHE:HE2	1.81	0.44
1:A:338:LYS:HE3	1:A:796:ARG:HB3	2.00	0.44
1:A:396:LEU:HD21	1:A:435:GLU:HG3	1.99	0.44
1:A:51:PHE:HD1	1:A:51:PHE:H	1.66	0.44
1:A:408:ASN:O	1:A:412:VAL:HG23	2.18	0.44
1:B:517:ARG:HH21	1:B:610:LEU:HB3	1.82	0.44
1:A:510:LEU:O	1:A:514:VAL:HG23	2.18	0.44
1:B:166:TYR:HB3	1:B:169:PHE:HD2	1.83	0.44
1:B:287:HIS:HE1	1:B:300:TYR:CD2	2.36	0.44

Continued on next page...

Continued from previous page...

Atom-1	Atom-2	Interatomic distance (Å)	Clash overlap (Å)
1:A:574:ALA:HB2	1:A:585:ILE:HD11	2.00	0.43
1:A:397:ALA:O	1:A:400:HIS:CE1	2.70	0.43
1:A:179:VAL:HG21	1:A:274:PHE:HD1	1.83	0.43
1:A:546:LEU:HA	1:A:546:LEU:HD12	1.81	0.43
1:B:451:ILE:HD12	1:B:456:TRP:HB2	1.99	0.43
1:A:234:ASN:CB	1:B:258:ASN:HB2	2.48	0.43
1:A:266:LYS:HE3	1:A:363:LEU:HD13	1.99	0.43
1:B:65:SER:O	1:B:275:GLN:NE2	2.50	0.43
1:B:179:VAL:HG21	1:B:274:PHE:HD1	1.83	0.43
1:B:220:TRP:CE2	1:B:278:CYS:HB3	2.53	0.43
1:A:19:GLN:CD	1:B:48:ALA:HA	2.36	0.43
1:A:30:THR:HG21	1:B:174:ALA:HB2	2.00	0.43
1:A:228:PHE:CZ	1:B:254:VAL:HG21	2.53	0.43
1:A:65:SER:HB3	1:A:68:PHE:CE1	2.53	0.43
1:B:744:PHE:O	1:B:748:VAL:HG23	2.19	0.43
1:A:233:PHE:CE2	1:B:257:PRO:HB3	2.51	0.43
1:A:173:GLU:OE2	1:B:32:ARG:HB3	2.18	0.43
1:A:287:HIS:HE1	1:A:300:TYR:CD2	2.36	0.43
1:A:220:TRP:CE2	1:A:278:CYS:HB3	2.53	0.43
1:B:446:ASN:O	1:B:790:ARG:NH1	2.51	0.43
1:A:230:LEU:HD11	1:B:145:PHE:CB	2.46	0.43
1:A:540:ARG:HD2	1:A:740:VAL:HG22	2.01	0.43
1:A:732:LYS:HG3	1:A:733:GLN:N	2.34	0.43
1:B:338:LYS:HE3	1:B:796:ARG:HB3	2.00	0.43
1:B:123:LEU:HD21	1:B:217:LEU:HD13	2.00	0.43
1:B:574:ALA:HB2	1:B:585:ILE:HD11	2.00	0.43
1:B:622:ILE:HB	1:B:623:PRO:HD3	2.01	0.43
1:B:562:ASP:O	1:B:759:ARG:NH2	2.52	0.43
1:A:234:ASN:CA	1:B:258:ASN:CB	2.96	0.43
1:A:562:ASP:O	1:A:759:ARG:NH2	2.52	0.43
1:B:30:THR:OG1	1:B:33:GLN:HG3	2.19	0.43
1:B:627:ILE:HG23	1:B:654:VAL:HG23	2.00	0.43
1:A:321:LEU:CD2	1:A:335:ILE:HD12	2.49	0.43
1:B:65:SER:HB3	1:B:68:PHE:CE1	2.53	0.43
1:B:510:LEU:O	1:B:514:VAL:HG23	2.18	0.43
1:A:451:ILE:HD12	1:A:456:TRP:HB2	1.99	0.43
1:A:363:LEU:C	1:A:364:LEU:HD13	2.39	0.43
1:B:179:VAL:HG21	1:B:274:PHE:CD1	2.54	0.43
1:B:51:PHE:HD1	1:B:51:PHE:H	1.66	0.43
1:B:784:ILE:O	1:B:788:GLN:HG3	2.19	0.43
1:B:728:HIS:CG	1:B:733:GLN:HG3	2.54	0.42

Continued on next page...

Continued from previous page...

Atom-1	Atom-2	Interatomic distance (Å)	Clash overlap (Å)
1:B:390:GLU:O	1:B:392:VAL:N	2.52	0.42
1:B:533:LYS:HB3	1:B:533:LYS:HE2	1.75	0.42
1:B:144:LEU:CD1	1:B:573:LYS:HE3	2.42	0.42
1:A:16:ARG:HH11	1:B:16:ARG:CD	2.32	0.42
1:A:517:ARG:HH21	1:A:610:LEU:HB3	1.82	0.42
1:A:480:LEU:O	1:A:483:LEU:HD13	2.18	0.42
1:A:150:VAL:CG2	1:A:155:VAL:HG21	2.49	0.42
1:B:141:GLN:HB3	1:B:163:ARG:CZ	2.49	0.42
1:B:421:ALA:C	1:B:446:ASN:HD21	2.22	0.42
1:A:421:ALA:C	1:A:446:ASN:HD21	2.22	0.42
1:A:30:THR:OG1	1:A:33:GLN:HG3	2.19	0.42
1:A:145:PHE:CB	1:B:230:LEU:HD12	2.49	0.42
1:B:585:ILE:HG23	1:B:609:PHE:CE2	2.55	0.42
1:B:726:MET:HG3	1:B:727:LEU:N	2.34	0.42
1:A:726:MET:HG3	1:A:727:LEU:N	2.34	0.42
1:A:728:HIS:CG	1:A:733:GLN:HG3	2.54	0.42
1:A:370:ILE:O	1:A:374:ILE:HG13	2.19	0.42
1:A:744:PHE:O	1:A:748:VAL:HG23	2.19	0.42
1:A:233:PHE:HE2	1:B:257:PRO:CB	2.33	0.42
1:B:540:ARG:HD2	1:B:740:VAL:HG22	2.00	0.42
1:B:363:LEU:C	1:B:364:LEU:HD13	2.39	0.42
1:B:695:LYS:O	1:B:699:LYS:HG2	2.20	0.42
1:A:585:ILE:HG23	1:A:609:PHE:CE2	2.55	0.42
1:A:390:GLU:O	1:A:392:VAL:N	2.52	0.42
1:A:547:ARG:HH22	1:A:551:LEU:CB	2.28	0.42
1:B:739:LEU:CB	1:B:742:ALA:HB3	2.45	0.42
1:A:587:ALA:CB	1:A:726:MET:HE2	2.49	0.42
1:A:234:ASN:OD1	1:B:258:ASN:HB2	2.19	0.42
1:B:622:ILE:HD13	1:B:645:LYS:CB	2.49	0.42
1:A:784:ILE:O	1:A:788:GLN:HG3	2.19	0.42
1:B:255:LEU:HD22	1:B:256:TYR:CG	2.55	0.42
1:A:16:ARG:CD	1:B:44:GLU:CG	2.92	0.42
1:A:316:GLU:O	1:A:320:VAL:HG23	2.20	0.42
1:B:370:ILE:O	1:B:374:ILE:HG13	2.19	0.42
1:A:123:LEU:HD21	1:A:217:LEU:HD13	2.00	0.42
1:A:739:LEU:CB	1:A:742:ALA:HB3	2.45	0.42
1:A:166:TYR:HB3	1:A:169:PHE:HD2	1.83	0.42
1:A:128:THR:HG23	1:A:209:TYR:HB3	2.01	0.42
1:A:141:GLN:HB3	1:A:163:ARG:CZ	2.49	0.42
1:B:732:LYS:HG3	1:B:733:GLN:N	2.33	0.42
1:A:707:LEU:HD12	1:A:707:LEU:HA	1.87	0.42

Continued on next page...

Continued from previous page...

Atom-1	Atom-2	Interatomic distance (Å)	Clash overlap (Å)
1:A:622:ILE:HD13	1:A:645:LYS:CB	2.49	0.42
1:B:128:THR:HG23	1:B:209:TYR:HB3	2.01	0.42
1:A:92:LYS:HE3	1:A:92:LYS:HA	2.02	0.42
1:B:762:GLU:O	1:B:766:ARG:HG3	2.20	0.42
1:A:694:VAL:O	1:A:698:LYS:HG2	2.20	0.42
1:A:622:ILE:HB	1:A:623:PRO:HD3	2.01	0.41
1:A:446:ASN:O	1:A:790:ARG:NH1	2.51	0.41
1:A:712:SER:OG	1:A:714:LYS:HB2	2.19	0.41
1:A:549:LEU:HD23	1:A:549:LEU:HA	1.93	0.41
1:B:92:LYS:HA	1:B:92:LYS:HE3	2.02	0.41
1:A:255:LEU:HD22	1:A:256:TYR:CG	2.55	0.41
1:B:587:ALA:CB	1:B:726:MET:HE2	2.50	0.41
1:B:316:GLU:O	1:B:320:VAL:HG23	2.20	0.41
1:B:150:VAL:CG2	1:B:155:VAL:HG21	2.49	0.41
1:A:179:VAL:HG21	1:A:274:PHE:CD1	2.54	0.41
1:A:115:LEU:HD21	1:A:306:ASN:OD1	2.20	0.41
1:B:147:GLN:HG3	1:B:154:GLN:HG3	2.01	0.41
1:B:657:LEU:HA	1:B:657:LEU:HD23	1.91	0.41
1:A:695:LYS:O	1:A:699:LYS:HG2	2.20	0.41
1:A:121:CYS:O	1:A:124:ASP:HB3	2.21	0.41
1:A:147:GLN:HG3	1:A:154:GLN:HG3	2.01	0.41
1:B:115:LEU:HD21	1:B:306:ASN:OD1	2.20	0.41
1:A:547:ARG:NH2	1:A:551:LEU:HB2	2.32	0.41
1:A:652:LEU:HD23	1:A:764:TRP:CZ2	2.56	0.41
1:A:5:PHE:CE2	1:A:86:ASP:HB3	2.55	0.41
1:B:486:LEU:O	1:B:489:LEU:N	2.54	0.41
1:B:224:HIS:HD2	1:B:226:HIS:C	2.24	0.41
1:A:425:SER:O	1:A:428:VAL:HB	2.20	0.41
1:B:5:PHE:CE2	1:B:86:ASP:HB3	2.55	0.41
1:B:712:SER:OG	1:B:714:LYS:HB2	2.20	0.41
1:A:680:VAL:O	1:A:684:LYS:HG3	2.20	0.41
1:A:22:GLY:CA	1:B:170:ARG:CD	2.93	0.41
1:A:224:HIS:HD2	1:A:226:HIS:C	2.24	0.41
1:A:762:GLU:O	1:A:766:ARG:HG3	2.20	0.41
1:B:261:HIS:CD2	1:B:263:ALA:HB3	2.52	0.41
1:B:703:LEU:HD11	1:B:741:MET:HE1	2.03	0.41
1:B:610:LEU:HA	1:B:610:LEU:HD23	1.95	0.41
1:A:529:ASP:O	1:A:568:PHE:HA	2.21	0.41
1:A:88:GLN:O	1:A:92:LYS:HD2	2.21	0.41
1:A:261:HIS:CD2	1:A:263:ALA:HB3	2.52	0.41
1:B:144:LEU:HD23	1:B:255:LEU:O	2.21	0.41

Continued on next page...

Continued from previous page...

Atom-1	Atom-2	Interatomic distance (Å)	Clash overlap (Å)
1:A:115:LEU:CD1	2:A:1006:MAL:H2	2.43	0.41
1:A:16:ARG:CG	1:B:44:GLU:HG3	2.51	0.41
1:A:258:ASN:O	1:A:264:GLY:HA3	2.21	0.40
1:A:22:GLY:N	1:B:170:ARG:CD	2.72	0.40
1:A:739:LEU:HB3	1:A:742:ALA:CB	2.50	0.40
1:B:258:ASN:O	1:B:264:GLY:HA3	2.21	0.40
1:B:447:VAL:HG13	1:B:786:ASP:CB	2.51	0.40
1:B:88:GLN:O	1:B:92:LYS:HD2	2.21	0.40
1:B:694:VAL:O	1:B:698:LYS:HG2	2.20	0.40
1:A:22:GLY:HA2	1:B:170:ARG:HD2	1.98	0.40
1:B:652:LEU:HD23	1:B:764:TRP:CZ2	2.56	0.40
1:B:425:SER:O	1:B:428:VAL:HB	2.20	0.40
1:B:121:CYS:O	1:B:124:ASP:HB3	2.21	0.40
1:B:680:VAL:O	1:B:684:LYS:HG3	2.20	0.40
2:A:1006:MAL:H61	3:A:997:SO4:O3	2.21	0.40
1:B:311:THR:CG2	1:B:406:MET:HE2	2.50	0.40
1:A:452:THR:HA	1:A:453:PRO:HD2	1.89	0.40
1:A:6:ASN:OD1	1:A:8:LYS:HB3	2.21	0.40
1:A:144:LEU:HD23	1:A:255:LEU:O	2.21	0.40
1:A:144:LEU:CD1	1:A:573:LYS:HE3	2.42	0.40
1:A:224:HIS:CD2	1:A:226:HIS:N	2.85	0.40
1:A:542:HIS:N	1:A:542:HIS:CD2	2.85	0.40
1:B:268:ARG:HA	1:B:271:GLN:OE1	2.21	0.40
1:A:486:LEU:O	1:A:489:LEU:N	2.54	0.40
1:A:129:VAL:CG1	1:A:129:VAL:O	2.69	0.40
1:B:429:VAL:O	1:B:434:PRO:HA	2.21	0.40
1:B:115:LEU:CD1	2:B:1006:MAL:H2	2.43	0.40
1:B:129:VAL:CG1	1:B:129:VAL:O	2.69	0.40
1:A:507:LYS:HA	1:A:624:ALA:HB1	2.04	0.40
1:B:443:LYS:O	1:B:445:HIS:CD2	2.75	0.40
1:B:546:LEU:HA	1:B:546:LEU:HD12	1.81	0.40

All (12) symmetry-related close contacts are listed below. The label for Atom-2 includes the symmetry operator and encoded unit-cell translations to be applied.

Atom-1	Atom-2	Interatomic distance (Å)	Clash overlap (Å)
1:A:600:LEU:CD2	1:A:714:LYS:CE[2_555]	0.84	1.36
1:A:600:LEU:CD2	1:A:714:LYS:NZ[2_555]	1.14	1.06
1:A:85:GLN:OE1	1:B:474:LYS:NZ[4_546]	1.22	0.98
1:A:85:GLN:CD	1:B:474:LYS:NZ[4_546]	1.50	0.70

Continued on next page...

Continued from previous page...

Atom-1	Atom-2	Interatomic distance (Å)	Clash overlap (Å)
1:A:689:LYS:NZ	1:B:685:ALA:CA[1_545]	1.61	0.59
1:A:474:LYS:NZ	1:B:2:GLN:OE1[4_546]	1.62	0.58
1:A:689:LYS:NZ	1:B:685:ALA:CB[1_545]	1.69	0.51
1:B:235:ASP:OD2	1:B:732:LYS:NZ[4_545]	1.81	0.39
1:A:85:GLN:NE2	1:B:474:LYS:NZ[4_546]	1.87	0.33
1:A:473:GLN:CD	1:B:2:GLN:O[4_546]	1.99	0.21
1:A:473:GLN:NE2	1:B:2:GLN:O[4_546]	2.08	0.12
1:A:600:LEU:CG	1:A:714:LYS:NZ[2_555]	2.19	0.01

5.3 Torsion angles

5.3.1 Protein backbone

In the following table, the Percentiles column shows the percent Ramachandran outliers of the chain as a percentile score with respect to all X-ray entries followed by that with respect to entries of similar resolution.

The Analysed column shows the number of residues for which the backbone conformation was analysed, and the total number of residues.

Mol	Chain	Analysed	Favoured	Allowed	Outliers	Percentiles	
1	A	794/797 (100%)	716 (90%)	68 (9%)	10 (1%)	15	53
1	B	794/797 (100%)	717 (90%)	68 (9%)	9 (1%)	17	58
All	All	1588/1594 (100%)	1433 (90%)	136 (9%)	19 (1%)	16	56

All (19) Ramachandran outliers are listed below:

Mol	Chain	Res	Type
1	A	2	GLN
1	B	2	GLN
1	A	210	ARG
1	A	390	GLU
1	A	391	LYS
1	A	670	GLU
1	B	210	ARG
1	B	390	GLU
1	B	391	LYS
1	B	670	GLU
1	A	557	GLU
1	B	557	GLU

Continued on next page...

Continued from previous page...

Mol	Chain	Res	Type
1	A	69	LEU
1	A	132	SER
1	B	69	LEU
1	B	132	SER
1	A	631	ILE
1	B	631	ILE
1	A	186	THR

5.3.2 Protein sidechains ⓘ

In the following table, the Percentiles column shows the percent sidechain outliers of the chain as a percentile score with respect to all X-ray entries followed by that with respect to entries of similar resolution.

The Analysed column shows the number of residues for which the sidechain conformation was analysed, and the total number of residues.

Mol	Chain	Analysed	Rotameric	Outliers	Percentiles	
1	A	664/665 (100%)	617 (93%)	47 (7%)	18	54
1	B	664/665 (100%)	617 (93%)	47 (7%)	18	54
All	All	1328/1330 (100%)	1234 (93%)	94 (7%)	18	54

All (94) residues with a non-rotameric sidechain are listed below:

Mol	Chain	Res	Type
1	A	51	PHE
1	A	92	LYS
1	A	115	LEU
1	A	144	LEU
1	A	178	GLN
1	A	188	ASP
1	A	204	LEU
1	A	218	ARG
1	A	230	LEU
1	A	255	LEU
1	A	260	ASN
1	A	294	LEU
1	A	302	VAL
1	A	307	ASP
1	A	328	SER
1	A	353	GLU

Continued on next page...

Continued from previous page...

Mol	Chain	Res	Type
1	A	359	LEU
1	A	361	LYS
1	A	364	LEU
1	A	377	ARG
1	A	406	MET
1	A	423	LEU
1	A	435	GLU
1	A	454	ARG
1	A	468	LEU
1	A	470	LYS
1	A	489	LEU
1	A	521	ASP
1	A	522	ILE
1	A	542	HIS
1	A	544	ASN
1	A	546	LEU
1	A	547	ARG
1	A	557	GLU
1	A	563	ARG
1	A	578	TYR
1	A	580	LEU
1	A	608	VAL
1	A	609	PHE
1	A	620	LYS
1	A	671	GLU
1	A	681	LYS
1	A	707	LEU
1	A	727	LEU
1	A	728	HIS
1	A	733	GLN
1	A	739	LEU
1	B	51	PHE
1	B	92	LYS
1	B	115	LEU
1	B	144	LEU
1	B	178	GLN
1	B	188	ASP
1	B	204	LEU
1	B	218	ARG
1	B	230	LEU
1	B	255	LEU
1	B	260	ASN

Continued on next page...

Continued from previous page...

Mol	Chain	Res	Type
1	B	294	LEU
1	B	302	VAL
1	B	307	ASP
1	B	328	SER
1	B	353	GLU
1	B	359	LEU
1	B	361	LYS
1	B	364	LEU
1	B	377	ARG
1	B	406	MET
1	B	423	LEU
1	B	435	GLU
1	B	454	ARG
1	B	468	LEU
1	B	470	LYS
1	B	489	LEU
1	B	521	ASP
1	B	522	ILE
1	B	542	HIS
1	B	544	ASN
1	B	546	LEU
1	B	547	ARG
1	B	557	GLU
1	B	563	ARG
1	B	578	TYR
1	B	580	LEU
1	B	608	VAL
1	B	609	PHE
1	B	620	LYS
1	B	671	GLU
1	B	681	LYS
1	B	707	LEU
1	B	727	LEU
1	B	728	HIS
1	B	733	GLN
1	B	739	LEU

Some sidechains can be flipped to improve hydrogen bonding and reduce clashes. All (36) such sidechains are listed below:

Mol	Chain	Res	Type
1	A	2	GLN
1	A	9	GLN

Continued on next page...

Continued from previous page...

Mol	Chain	Res	Type
1	A	11	GLN
1	A	33	GLN
1	A	76	ASN
1	A	141	GLN
1	A	215	GLN
1	A	224	HIS
1	A	367	HIS
1	A	424	HIS
1	A	437	HIS
1	A	445	HIS
1	A	446	ASN
1	A	459	GLN
1	A	531	GLN
1	A	542	HIS
1	A	544	ASN
1	A	589	ASN
1	B	2	GLN
1	B	9	GLN
1	B	11	GLN
1	B	76	ASN
1	B	141	GLN
1	B	215	GLN
1	B	224	HIS
1	B	367	HIS
1	B	424	HIS
1	B	437	HIS
1	B	445	HIS
1	B	446	ASN
1	B	459	GLN
1	B	531	GLN
1	B	542	HIS
1	B	544	ASN
1	B	589	ASN
1	B	728	HIS

5.3.3 RNA ⓘ

There are no RNA molecules in this entry.

5.4 Non-standard residues in protein, DNA, RNA chains ⓘ

There are no non-standard protein/DNA/RNA residues in this entry.

5.5 Carbohydrates [i](#)

There are no carbohydrates in this entry.

5.6 Ligand geometry [i](#)

8 ligands are modelled in this entry.

In the following table, the Counts columns list the number of bonds (or angles) for which Mogul statistics could be retrieved, the number of bonds (or angles) that are observed in the model and the number of bonds (or angles) that are defined in the chemical component dictionary. The Link column lists molecule types, if any, to which the group is linked. The Z score for a bond length (or angle) is the number of standard deviations the observed value is removed from the expected value. A bond length (or angle) with $|Z| > 2$ is considered an outlier worth inspection. RMSZ is the root-mean-square of all Z scores of the bond lengths (or angles).

Mol	Type	Chain	Res	Link	Bond lengths			Bond angles		
					Counts	RMSZ	# $ Z > 2$	Counts	RMSZ	# $ Z > 2$
2	MAL	A	1006	-	24,24,24	1.86	8 (33%)	35,35,35	2.63	15 (42%)
3	SO4	A	997	-	4,4,4	1.25	0	6,6,6	0.91	1 (16%)
5	GOL	A	998	-	5,5,5	0.25	0	5,5,5	0.67	0
4	PLP	A	999	1	15,15,16	2.63	3 (20%)	21,22,23	1.60	5 (23%)
2	MAL	B	1006	-	24,24,24	1.87	8 (33%)	35,35,35	2.63	15 (42%)
3	SO4	B	997	-	4,4,4	1.25	0	6,6,6	0.91	1 (16%)
5	GOL	B	998	-	5,5,5	0.24	0	5,5,5	0.68	0
4	PLP	B	999	1	15,15,16	2.64	3 (20%)	21,22,23	1.60	5 (23%)

In the following table, the Chirals column lists the number of chiral outliers, the number of chiral centers analysed, the number of these observed in the model and the number defined in the chemical component dictionary. Similar counts are reported in the Torsion and Rings columns. '-' means no outliers of that kind were identified.

Mol	Type	Chain	Res	Link	Chirals	Torsions	Rings
2	MAL	A	1006	-	-	0/8/48/48	0/2/2/2
3	SO4	A	997	-	-	0/0/0/0	0/0/0/0
5	GOL	A	998	-	-	0/4/4/4	0/0/0/0
4	PLP	A	999	1	-	0/6/6/8	0/1/1/1
2	MAL	B	1006	-	-	0/8/48/48	0/2/2/2
3	SO4	B	997	-	-	0/0/0/0	0/0/0/0
5	GOL	B	998	-	-	0/4/4/4	0/0/0/0
4	PLP	B	999	1	-	0/6/6/8	0/1/1/1

All (22) bond length outliers are listed below:

Mol	Chain	Res	Type	Atoms	Z	Observed(Å)	Ideal(Å)
4	B	999	PLP	C3-C2	-9.29	1.34	1.40
4	A	999	PLP	C3-C2	-9.26	1.34	1.40
2	B	1006	MAL	O2'-C2'	-3.61	1.34	1.43
2	A	1006	MAL	O2'-C2'	-3.60	1.34	1.43
2	B	1006	MAL	C4-C3	-2.53	1.45	1.52
2	A	1006	MAL	C4-C3	-2.51	1.45	1.52
4	A	999	PLP	C5-C4	-2.09	1.38	1.40
4	B	999	PLP	C5-C4	-2.06	1.38	1.40
4	B	999	PLP	P-O2P	2.22	1.62	1.54
4	A	999	PLP	P-O2P	2.22	1.62	1.54
2	B	1006	MAL	C1-C2	2.23	1.59	1.52
2	A	1006	MAL	C1-C2	2.23	1.59	1.52
2	A	1006	MAL	O5'-C1'	2.55	1.47	1.43
2	B	1006	MAL	O5'-C1'	2.58	1.47	1.43
2	B	1006	MAL	C6'-C5'	2.85	1.62	1.51
2	A	1006	MAL	C6'-C5'	2.86	1.62	1.51
2	B	1006	MAL	C1'-C2'	2.97	1.58	1.52
2	B	1006	MAL	O1-C1	2.98	1.49	1.41
2	A	1006	MAL	C1'-C2'	2.99	1.58	1.52
2	A	1006	MAL	O1-C1	2.99	1.49	1.41
2	A	1006	MAL	C4-C5	3.57	1.60	1.53
2	B	1006	MAL	C4-C5	3.60	1.60	1.53

All (42) bond angle outliers are listed below:

Mol	Chain	Res	Type	Atoms	Z	Observed(°)	Ideal(°)
2	B	1006	MAL	C6-C5-C4	-6.12	97.91	113.02
2	A	1006	MAL	C6-C5-C4	-6.11	97.94	113.02
2	A	1006	MAL	O5'-C1'-C2'	-5.56	100.92	109.80
2	B	1006	MAL	O5'-C1'-C2'	-5.54	100.96	109.80
2	B	1006	MAL	O2-C2-C3	-4.61	99.96	110.34
2	A	1006	MAL	O2-C2-C3	-4.60	99.98	110.34
2	B	1006	MAL	O4-C4-C3	-3.97	101.39	110.34
2	A	1006	MAL	O4-C4-C3	-3.96	101.43	110.34
2	B	1006	MAL	O2'-C2'-C3'	-3.36	102.77	110.34
2	A	1006	MAL	O2'-C2'-C3'	-3.36	102.78	110.34
4	B	999	PLP	C4A-C4-C5	-3.21	117.54	120.88
4	A	999	PLP	C4A-C4-C5	-3.18	117.57	120.88
2	A	1006	MAL	O5-C1-C2	-3.07	103.99	110.28
2	B	1006	MAL	O5-C1-C2	-3.06	104.00	110.28
2	B	1006	MAL	O1'-C1'-O5'	-2.86	102.42	110.25
2	A	1006	MAL	O1'-C1'-O5'	-2.85	102.44	110.25
2	B	1006	MAL	C1-O5-C5	-2.84	108.23	113.75

Continued on next page...

Continued from previous page...

Mol	Chain	Res	Type	Atoms	Z	Observed(°)	Ideal(°)
2	A	1006	MAL	C1-O5-C5	-2.82	108.27	113.75
4	A	999	PLP	C5-C6-N1	-2.49	119.53	123.86
4	B	999	PLP	C5-C6-N1	-2.48	119.55	123.86
2	A	1006	MAL	O3'-C3'-C2'	-2.33	105.10	110.34
2	B	1006	MAL	O3'-C3'-C2'	-2.32	105.12	110.34
2	B	1006	MAL	O6'-C6'-C5'	-2.25	103.89	111.33
2	A	1006	MAL	O6'-C6'-C5'	-2.25	103.90	111.33
4	B	999	PLP	O3P-P-O2P	-2.09	99.43	107.38
4	A	999	PLP	O3P-P-O2P	-2.09	99.43	107.38
3	A	997	SO4	O4-S-O3	-2.03	100.71	108.98
3	B	997	SO4	O4-S-O3	-2.02	100.75	108.98
2	B	1006	MAL	C3-C4-C5	2.03	113.73	110.20
2	A	1006	MAL	C3-C4-C5	2.04	113.75	110.20
4	A	999	PLP	O4P-C5A-C5	2.91	113.80	108.99
4	B	999	PLP	O4P-C5A-C5	2.93	113.83	108.99
2	A	1006	MAL	O5-C5-C4	3.40	116.06	109.68
2	B	1006	MAL	O5-C5-C4	3.40	116.06	109.68
4	A	999	PLP	O3P-P-O1P	3.59	122.14	110.58
4	B	999	PLP	O3P-P-O1P	3.59	122.14	110.58
2	B	1006	MAL	C1'-O5'-C5'	3.60	120.13	113.47
2	A	1006	MAL	C1'-O5'-C5'	3.60	120.14	113.47
2	B	1006	MAL	C1-C2-C3	4.16	118.17	109.97
2	A	1006	MAL	C1-C2-C3	4.19	118.22	109.97
2	A	1006	MAL	O2'-C2'-C1'	4.77	120.34	109.82
2	B	1006	MAL	O2'-C2'-C1'	4.78	120.34	109.82

There are no chirality outliers.

There are no torsion outliers.

There are no ring outliers.

5 monomers are involved in 13 short contacts:

Mol	Chain	Res	Type	Clashes	Symm-Clashes
2	A	1006	MAL	5	0
3	A	997	SO4	1	0
4	A	999	PLP	2	0
2	B	1006	MAL	4	0
4	B	999	PLP	2	0

5.7 Other polymers ⓘ

There are no such residues in this entry.

5.8 Polymer linkage issues ⓘ

There are no chain breaks in this entry.

6 Fit of model and data

6.1 Protein, DNA and RNA chains

In the following table, the column labelled ‘#RSRZ> 2’ contains the number (and percentage) of RSRZ outliers, followed by percent RSRZ outliers for the chain as percentile scores relative to all X-ray entries and entries of similar resolution. The OWAB column contains the minimum, median, 95th percentile and maximum values of the occupancy-weighted average B-factor per residue. The column labelled ‘Q< 0.9’ lists the number of (and percentage) of residues with an average occupancy less than 0.9.

Mol	Chain	Analysed	<RSRZ>	#RSRZ>2	OWAB(Å ²)	Q<0.9
1	A	796/797 (99%)	0.61	40 (5%) 32 13	2, 20, 61, 115	0
1	B	796/797 (99%)	1.39	201 (25%) 1 1	2, 20, 61, 115	0
All	All	1592/1594 (99%)	1.00	241 (15%) 3 1	2, 20, 61, 115	0

All (241) RSRZ outliers are listed below:

Mol	Chain	Res	Type	RSRZ
1	B	558	ASN	6.5
1	B	561	ALA	5.8
1	B	704	ASP	5.8
1	B	186	THR	5.7
1	B	442	ASN	5.6
1	B	410	CYS	5.5
1	B	438	GLN	5.5
1	B	390	GLU	5.4
1	B	562	ASP	5.4
1	B	372	ASN	5.3
1	B	389	ASP	5.1
1	B	328	SER	4.9
1	B	60	HIS	4.8
1	B	387	PRO	4.8
1	B	320	VAL	4.7
1	B	760	ASP	4.6
1	B	560	GLN	4.6
1	B	196	THR	4.6
1	B	383	GLU	4.5
1	B	293	GLU	4.3
1	B	700	ASP	4.3
1	B	416	ALA	4.3
1	A	330	ASP	4.2
1	B	323	ASP	4.2

Continued on next page...

Continued from previous page...

Mol	Chain	Res	Type	RSRZ
1	A	717	ASP	4.1
1	A	57	ASN	4.0
1	B	338	LYS	4.0
1	B	289	LEU	4.0
1	B	184	ALA	4.0
1	A	7	ASP	4.0
1	B	425	SER	4.0
1	B	696	TRP	3.9
1	B	329	TRP	3.9
1	B	185	VAL	3.8
1	B	127	ALA	3.8
1	B	191	TRP	3.7
1	B	391	LYS	3.7
1	B	655	GLY	3.6
1	B	51	PHE	3.6
1	A	560	GLN	3.6
1	A	3	PRO	3.6
1	B	441	PRO	3.6
1	A	2	GLN	3.6
1	B	690	GLY	3.5
1	A	389	ASP	3.5
1	B	384	LYS	3.5
1	B	761	GLN	3.5
1	B	124	ASP	3.5
1	A	390	GLU	3.5
1	B	788	GLN	3.5
1	B	678	HIS	3.5
1	B	299	ASP	3.4
1	B	783	SER	3.4
1	B	776	GLY	3.4
1	B	237	ASP	3.3
1	B	178	GLN	3.3
1	B	332	ALA	3.3
1	B	708	LYS	3.3
1	B	291	GLY	3.3
1	B	57	ASN	3.2
1	B	281	ALA	3.2
1	A	189	GLY	3.2
1	B	525	GLN	3.2
1	B	190	ARG	3.2
1	B	375	ASN	3.2
1	B	429	VAL	3.2

Continued on next page...

Continued from previous page...

Mol	Chain	Res	Type	RSRZ
1	B	780	SER	3.2
1	B	771	ASN	3.2
1	B	331	ASP	3.1
1	A	165	ASN	3.1
1	B	479	ASP	3.1
1	B	395	LYS	3.1
1	A	164	SER	3.1
1	B	784	ILE	3.1
1	B	59	ARG	3.1
1	B	290	ALA	3.1
1	B	187	LYS	3.0
1	B	742	ALA	3.0
1	B	164	SER	3.0
1	B	262	THR	3.0
1	B	687	LEU	3.0
1	B	370	ILE	3.0
1	A	171	HIS	3.0
1	B	380	THR	3.0
1	B	373	GLU	2.9
1	B	330	ASP	2.9
1	A	324	GLU	2.9
1	B	294	LEU	2.9
1	B	321	LEU	2.9
1	B	381	LEU	2.9
1	B	324	GLU	2.9
1	B	282	ASP	2.9
1	B	492	ASP	2.9
1	B	292	ARG	2.9
1	B	394	ALA	2.8
1	B	506	ASN	2.8
1	B	287	HIS	2.8
1	B	362	GLY	2.8
1	B	188	ASP	2.8
1	B	554	GLU	2.8
1	B	301	GLU	2.8
1	B	369	GLN	2.8
1	B	288	HIS	2.8
1	A	9	GLN	2.8
1	B	735	GLY	2.8
1	B	397	ALA	2.8
1	B	120	ALA	2.7
1	B	327	MET	2.7

Continued on next page...

Continued from previous page...

Mol	Chain	Res	Type	RSRZ
1	B	276	CYS	2.7
1	B	647	ALA	2.7
1	A	328	SER	2.7
1	B	189	GLY	2.7
1	B	77	ASN	2.7
1	B	296	GLU	2.7
1	B	707	LEU	2.7
1	B	300	TYR	2.7
1	B	80	ASN	2.6
1	B	714	LYS	2.6
1	B	602	GLY	2.6
1	A	235	ASP	2.6
1	B	497	ASP	2.6
1	B	789	ALA	2.6
1	B	313	ALA	2.6
1	A	188	ASP	2.6
1	B	446	ASN	2.6
1	B	667	LYS	2.6
1	B	62	ASN	2.6
1	B	478	ASN	2.6
1	B	363	LEU	2.5
1	B	791	ILE	2.5
1	B	376	THR	2.5
1	B	443	LYS	2.5
1	B	671	GLU	2.5
1	B	408	ASN	2.5
1	B	796	ARG	2.5
1	B	462	PRO	2.5
1	A	51	PHE	2.5
1	B	61	VAL	2.5
1	B	688	ALA	2.5
1	B	393	TRP	2.5
1	B	695	LYS	2.5
1	B	623	PRO	2.5
1	B	278	CYS	2.5
1	B	494	LYS	2.4
1	B	604	LYS	2.4
1	B	180	GLY	2.4
1	B	295	HIS	2.4
1	B	211	ASN	2.4
1	B	682	GLN	2.4
1	B	348	MET	2.4

Continued on next page...

Continued from previous page...

Mol	Chain	Res	Type	RSRZ
1	B	794	ALA	2.4
1	B	447	VAL	2.4
1	A	178	GLN	2.4
1	B	128	THR	2.4
1	B	258	ASN	2.4
1	B	424	HIS	2.4
1	B	721	HIS	2.4
1	B	473	GLN	2.4
1	A	438	GLN	2.4
1	A	19	GLN	2.4
1	B	297	LEU	2.3
1	B	412	VAL	2.3
1	A	50	PRO	2.3
1	A	326	GLN	2.3
1	B	203	ASP	2.3
1	B	781	ASP	2.3
1	B	47	ARG	2.3
1	B	420	VAL	2.3
1	B	426	ASP	2.3
1	B	734	GLY	2.3
1	B	343	THR	2.3
1	B	755	ASP	2.3
1	B	334	ALA	2.3
1	B	689	LYS	2.3
1	B	182	GLY	2.3
1	B	733	GLN	2.3
1	A	322	ILE	2.3
1	B	705	ALA	2.3
1	B	557	GLU	2.3
1	B	374	ILE	2.3
1	B	656	THR	2.3
1	B	436	TYR	2.2
1	B	386	TRP	2.2
1	B	368	MET	2.2
1	B	601	VAL	2.2
1	A	295	HIS	2.2
1	B	521	ASP	2.2
1	A	712	SER	2.2
1	B	195	PHE	2.2
1	B	706	VAL	2.2
1	B	440	TRP	2.2
1	A	516	VAL	2.2

Continued on next page...

Continued from previous page...

Mol	Chain	Res	Type	RSRZ
1	B	165	ASN	2.2
1	B	50	PRO	2.2
1	B	336	THR	2.2
1	A	24	ASN	2.2
1	A	603	ASP	2.2
1	B	280	VAL	2.2
1	B	224	HIS	2.2
1	B	400	HIS	2.2
1	B	411	VAL	2.2
1	B	56	ALA	2.2
1	A	519	GLY	2.2
1	B	709	GLU	2.1
1	B	432	LEU	2.1
1	A	354	ARG	2.1
1	A	346	THR	2.1
1	B	559	PRO	2.1
1	B	326	GLN	2.1
1	B	681	LYS	2.1
1	A	410	CYS	2.1
1	B	773	ALA	2.1
1	B	1	SER	2.1
1	B	693	PRO	2.1
1	B	712	SER	2.1
1	B	594	VAL	2.1
1	B	216	PRO	2.1
1	A	429	VAL	2.1
1	B	548	ILE	2.1
1	B	65	SER	2.1
1	B	433	PHE	2.1
1	B	578	TYR	2.1
1	B	274	PHE	2.0
1	B	351	ALA	2.0
1	B	399	VAL	2.0
1	B	333	TRP	2.0
1	B	322	ILE	2.0
1	B	367	HIS	2.0
1	B	264	GLY	2.0
1	B	793	GLN	2.0
1	B	713	GLY	2.0
1	A	6	ASN	2.0
1	A	385	THR	2.0
1	A	597	ASN	2.0

Continued on next page...

Continued from previous page...

Mol	Chain	Res	Type	RSRZ
1	A	243	GLN	2.0
1	B	244	GLN	2.0
1	B	353	GLU	2.0
1	A	593	ASP	2.0
1	B	729	SER	2.0
1	B	641	THR	2.0
1	B	317	LEU	2.0

6.2 Non-standard residues in protein, DNA, RNA chains [i](#)

There are no non-standard protein/DNA/RNA residues in this entry.

6.3 Carbohydrates [i](#)

There are no carbohydrates in this entry.

6.4 Ligands [i](#)

In the following table, the Atoms column lists the number of modelled atoms in the group and the number defined in the chemical component dictionary. LLDF column lists the quality of electron density of the group with respect to its neighbouring residues in protein, DNA or RNA chains. The B-factors column lists the minimum, median, 95th percentile and maximum values of B factors of atoms in the group. The column labelled 'Q < 0.9' lists the number of atoms with occupancy less than 0.9.

Mol	Type	Chain	Res	Atoms	RSCC	RSR	LLDF	B-factors(Å ²)	Q<0.9
5	GOL	A	998	6/6	0.66	0.51	4.47	91,91,91,91	0
5	GOL	B	998	6/6	0.55	0.54	2.82	91,91,91,91	0
3	SO4	A	997	5/5	0.78	0.38	1.39	77,77,77,77	0
2	MAL	A	1006	23/23	0.70	0.37	0.94	35,35,35,35	0
2	MAL	B	1006	23/23	0.66	0.41	0.94	35,35,35,35	0
3	SO4	B	997	5/5	0.67	0.38	0.81	77,77,77,77	0
4	PLP	B	999	15/16	0.77	0.34	0.11	25,25,25,25	0
4	PLP	A	999	15/16	0.85	0.26	-0.15	25,25,25,25	0

6.5 Other polymers [i](#)

There are no such residues in this entry.