



Full wwPDB X-ray Structure Validation Report ⓘ

Feb 1, 2016 – 12:27 AM GMT

PDB ID : 2AH9
Title : Crystal Structure of Human M340H-Beta-1,4-Galactosyltransferase-I (M340H-B4Gal-T1) in Complex with Chitotriose
Authors : Ramasamy, V.; Ramakrishnan, B.; Boeggeman, E.; Ratner, D.M.; Seeberger, P.H.; Qasba, P.K.
Deposited on : 2005-07-27
Resolution : 2.00 Å(reported)

This is a Full wwPDB X-ray Structure Validation Report for a publicly released PDB entry.
We welcome your comments at validation@mail.wwpdb.org
A user guide is available at
<http://wwpdb.org/validation/2016/XrayValidationReportHelp>
with specific help available everywhere you see the ⓘ symbol.

The following versions of software and data (see [references ⓘ](#)) were used in the production of this report:

MolProbity : 4.02b-467
Mogul : 1.7 (RC4), CSD as536be (2015)
Xtriage (Phenix) : 1.9-1692
EDS : rb-20026688
Percentile statistics : 20151230.v01 (using entries in the PDB archive December 30th 2015)
Refmac : 5.8.0135
CCP4 : 6.5.0
Ideal geometry (proteins) : Engh & Huber (2001)
Ideal geometry (DNA, RNA) : Parkinson et al. (1996)
Validation Pipeline (wwPDB-VP) : trunk26865

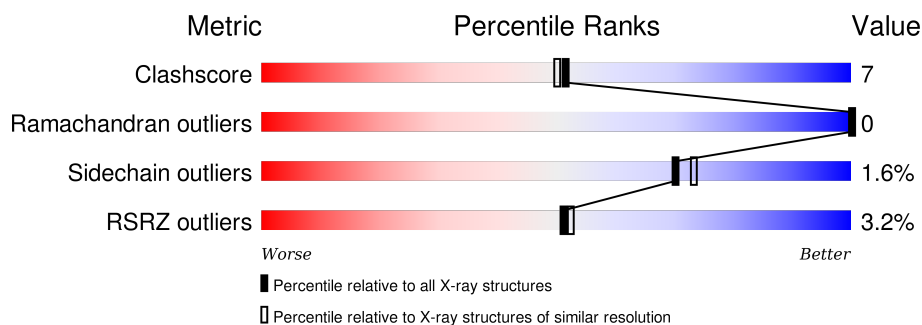
1 Overall quality at a glance

The following experimental techniques were used to determine the structure:

X-RAY DIFFRACTION

The reported resolution of this entry is 2.00 Å.

Percentile scores (ranging between 0-100) for global validation metrics of the entry are shown in the following graphic. The table shows the number of entries on which the scores are based.



Metric	Whole archive (#Entries)	Similar resolution (#Entries, resolution range(Å))
Clashscore	102246	7340 (2.00-2.00)
Ramachandran outliers	100387	7248 (2.00-2.00)
Sidechain outliers	100360	7247 (2.00-2.00)
RSRZ outliers	91569	6262 (2.00-2.00)

The table below summarises the geometric issues observed across the polymeric chains and their fit to the electron density. The red, orange, yellow and green segments on the lower bar indicate the fraction of residues that contain outliers for ≥ 3 , 2, 1 and 0 types of geometric quality criteria. A grey segment represents the fraction of residues that are not modelled. The numeric value for each fraction is indicated below the corresponding segment, with a dot representing fractions $\leq 5\%$. The upper red bar (where present) indicates the fraction of residues that have poor fit to the electron density. The numeric value is given above the bar.

Mol	Chain	Length	Quality of chain
1	A	287	
1	B	287	
1	C	287	

The following table lists non-polymeric compounds, carbohydrate monomers and non-standard residues in protein, DNA, RNA chains that are outliers for geometric or electron-density-fit criteria:

Mol	Type	Chain	Res	Chirality	Geometry	Clashes	Electron density
2	CTO	A	405	-	-	-	X
2	CTO	B	406	-	-	-	X
2	CTO	C	407	-	-	-	X
4	SO4	B	422	-	-	-	X
6	DIO	A	432	-	-	X	X
7	MES	C	433	-	-	X	X
8	GOL	A	411	-	-	-	X
8	GOL	A	414	-	-	-	X
8	GOL	B	409	-	-	-	X

2 Entry composition

There are 9 unique types of molecules in this entry. The entry contains 7558 atoms, of which 0 are hydrogens and 0 are deuteriums.

In the tables below, the ZeroOcc column contains the number of atoms modelled with zero occupancy, the AltConf column contains the number of residues with at least one atom in alternate conformation and the Trace column contains the number of residues modelled with at most 2 atoms.

- Molecule 1 is a protein called Beta-1,4-galactosyltransferase 1.

Mol	Chain	Residues	Atoms					ZeroOcc	AltConf	Trace
1	A	272	Total	C	N	O	S	0	0	0
			2212	1417	385	399	11			
1	B	272	Total	C	N	O	S	0	0	0
			2212	1417	385	399	11			
1	C	272	Total	C	N	O	S	0	0	0
			2212	1417	385	399	11			

There are 51 discrepancies between the modelled and reference sequences:

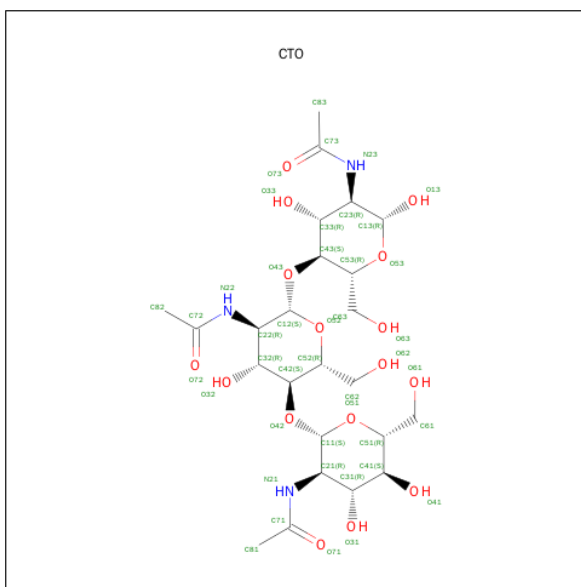
Chain	Residue	Modelled	Actual	Comment	Reference
A	112	ALA	-	SEE REMARK 999	UNP P15291
A	113	SER	-	SEE REMARK 999	UNP P15291
A	114	MET	-	SEE REMARK 999	UNP P15291
A	115	THR	-	SEE REMARK 999	UNP P15291
A	116	GLY	-	SEE REMARK 999	UNP P15291
A	117	GLY	-	SEE REMARK 999	UNP P15291
A	118	GLN	-	SEE REMARK 999	UNP P15291
A	119	GLN	-	SEE REMARK 999	UNP P15291
A	120	MET	-	SEE REMARK 999	UNP P15291
A	121	GLY	-	SEE REMARK 999	UNP P15291
A	122	ARG	-	SEE REMARK 999	UNP P15291
A	123	GLY	-	SEE REMARK 999	UNP P15291
A	124	SER	-	SEE REMARK 999	UNP P15291
A	125	ALA	-	SEE REMARK 999	UNP P15291
A	337	THR	ARG	ENGINEERED	UNP P15291
A	338	THR	CYS	ENGINEERED	UNP P15291
A	340	HIS	MET	ENGINEERED	UNP P15291
B	112	ALA	-	SEE REMARK 999	UNP P15291
B	113	SER	-	SEE REMARK 999	UNP P15291
B	114	MET	-	SEE REMARK 999	UNP P15291
B	115	THR	-	SEE REMARK 999	UNP P15291
B	116	GLY	-	SEE REMARK 999	UNP P15291
B	117	GLY	-	SEE REMARK 999	UNP P15291

Continued on next page...

Continued from previous page...

Chain	Residue	Modelled	Actual	Comment	Reference
B	118	GLN	-	SEE REMARK 999	UNP P15291
B	119	GLN	-	SEE REMARK 999	UNP P15291
B	120	MET	-	SEE REMARK 999	UNP P15291
B	121	GLY	-	SEE REMARK 999	UNP P15291
B	122	ARG	-	SEE REMARK 999	UNP P15291
B	123	GLY	-	SEE REMARK 999	UNP P15291
B	124	SER	-	SEE REMARK 999	UNP P15291
B	125	ALA	-	SEE REMARK 999	UNP P15291
B	337	THR	ARG	ENGINEERED	UNP P15291
B	338	THR	CYS	ENGINEERED	UNP P15291
B	340	HIS	MET	ENGINEERED	UNP P15291
C	112	ALA	-	SEE REMARK 999	UNP P15291
C	113	SER	-	SEE REMARK 999	UNP P15291
C	114	MET	-	SEE REMARK 999	UNP P15291
C	115	THR	-	SEE REMARK 999	UNP P15291
C	116	GLY	-	SEE REMARK 999	UNP P15291
C	117	GLY	-	SEE REMARK 999	UNP P15291
C	118	GLN	-	SEE REMARK 999	UNP P15291
C	119	GLN	-	SEE REMARK 999	UNP P15291
C	120	MET	-	SEE REMARK 999	UNP P15291
C	121	GLY	-	SEE REMARK 999	UNP P15291
C	122	ARG	-	SEE REMARK 999	UNP P15291
C	123	GLY	-	SEE REMARK 999	UNP P15291
C	124	SER	-	SEE REMARK 999	UNP P15291
C	125	ALA	-	SEE REMARK 999	UNP P15291
C	337	THR	ARG	ENGINEERED	UNP P15291
C	338	THR	CYS	ENGINEERED	UNP P15291
C	340	HIS	MET	ENGINEERED	UNP P15291

- Molecule 2 is SUGAR (TRIACETYLCHITOTRIOSE) (three-letter code: CTO) (formula: $C_{24}H_{41}N_3O_{16}$).



Mol	Chain	Residues	Atoms				ZeroOcc	AltConf
2	A	1	Total	C	N	O	0	0
			43	24	3	16		
2	B	1	Total	C	N	O	0	0
			43	24	3	16		
2	C	1	Total	C	N	O	0	0
			43	24	3	16		

- Molecule 3 is MANGANESE (II) ION (three-letter code: MN) (formula: Mn).

Mol	Chain	Residues	Atoms		ZeroOcc	AltConf
3	B	1	Total	Mn	0	0
			1	1		
3	A	1	Total	Mn	0	0
			1	1		
3	C	1	Total	Mn	0	0
			1	1		

- Molecule 4 is SULFATE ION (three-letter code: SO4) (formula: O₄S).



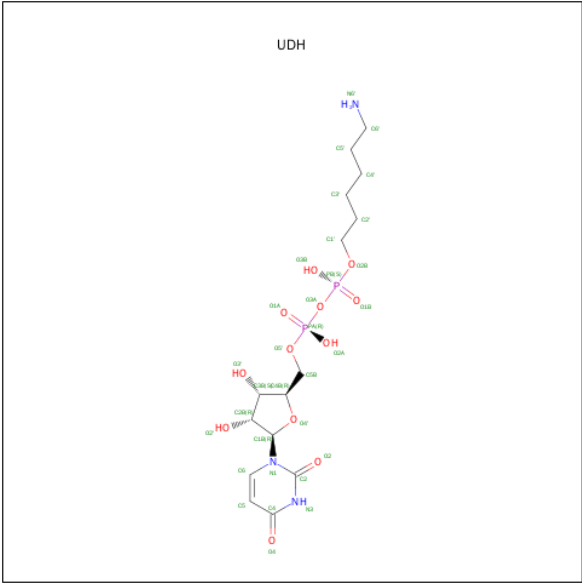
Mol	Chain	Residues	Atoms			ZeroOcc	AltConf
4	A	1	Total	O	S	0	0
			5	4	1		
4	A	1	Total	O	S	0	0
			5	4	1		
4	A	1	Total	O	S	0	0
			5	4	1		
4	B	1	Total	O	S	0	0
			5	4	1		
4	B	1	Total	O	S	0	0
			5	4	1		
4	C	1	Total	O	S	0	0
			5	4	1		
4	B	1	Total	O	S	0	0
			5	4	1		
4	B	1	Total	O	S	0	0
			5	4	1		
4	C	1	Total	O	S	0	0
			5	4	1		
4	C	1	Total	O	S	0	0
			5	4	1		
4	B	1	Total	O	S	0	0
			5	4	1		
4	A	1	Total	O	S	0	0
			5	4	1		
4	B	1	Total	O	S	0	0
			5	4	1		
4	C	1	Total	O	S	0	0
			5	4	1		

Continued on next page...

Continued from previous page...

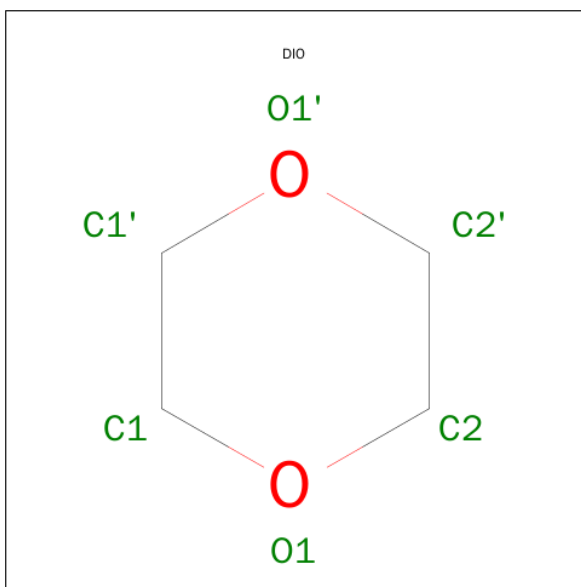
Mol	Chain	Residues	Atoms			ZeroOcc	AltConf
4	C	1	Total	O	S	0	0
			5	4	1		
4	B	1	Total	O	S	0	0
			5	4	1		

- Molecule 5 is 6-AMINOHEXYL-URIDINE-C1,5'-DIPHOSPHATE (three-letter code: UDH) (formula: C₁₅H₂₇N₃O₁₂P₂).



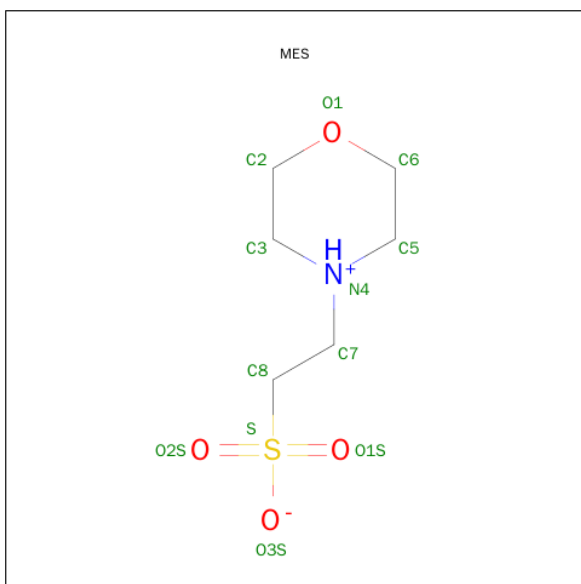
Mol	Chain	Residues	Atoms					ZeroOcc	AltConf
5	A	1	Total	C	N	O	P	0	0
			32	15	3	12	2		
5	B	1	Total	C	N	O	P	0	0
			32	15	3	12	2		
5	C	1	Total	C	N	O	P	0	0
			32	15	3	12	2		

- Molecule 6 is 1,4-DIETHYLENE DIOXIDE (three-letter code: DIO) (formula: C₄H₈O₂).



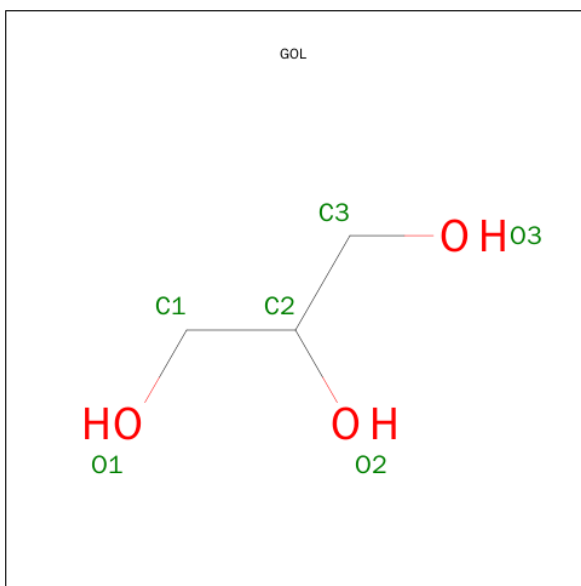
Mol	Chain	Residues	Atoms			ZeroOcc	AltConf
6	C	1	Total	C	O	0	0
			6	4	2		
6	A	1	Total	C	O	0	0
			6	4	2		

- Molecule 7 is 2-(N-MORPHOLINO)-ETHANESULFONIC ACID (three-letter code: MES) (formula: C₆H₁₃NO₄S).



Mol	Chain	Residues	Atoms					ZeroOcc	AltConf
7	C	1	Total	C	N	O	S	0	0
			12	6	1	4	1		

- Molecule 8 is GLYCEROL (three-letter code: GOL) (formula: $C_3H_8O_3$).



Mol	Chain	Residues	Atoms			ZeroOcc	AltConf
8	B	1	Total	C	O	0	0
			6	3	3		
8	B	1	Total	C	O	0	0
			6	3	3		
8	B	1	Total	C	O	0	0
			6	3	3		
8	A	1	Total	C	O	0	0
			6	3	3		
8	C	1	Total	C	O	0	0
			6	3	3		
8	B	1	Total	C	O	0	0
			6	3	3		
8	A	1	Total	C	O	0	0
			6	3	3		

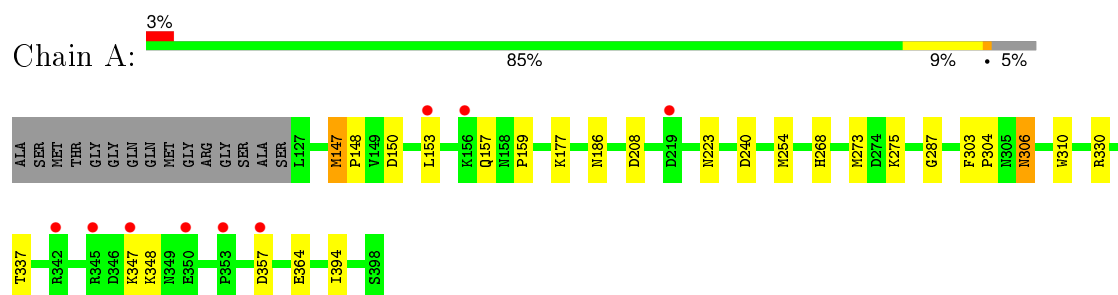
- Molecule 9 is water.

Mol	Chain	Residues	Atoms		ZeroOcc	AltConf
9	A	189	Total	O	0	0
			189	189		
9	B	206	Total	O	0	0
			206	206		
9	C	153	Total	O	0	0
			153	153		

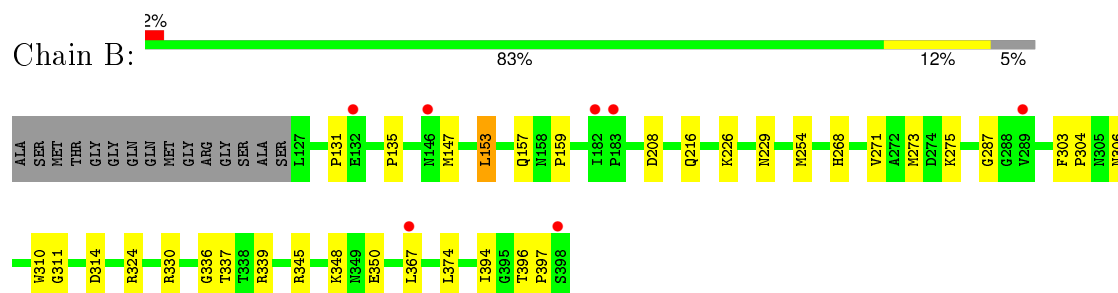
3 Residue-property plots [i](#)

These plots are drawn for all protein, RNA and DNA chains in the entry. The first graphic for a chain summarises the proportions of errors displayed in the second graphic. The second graphic shows the sequence view annotated by issues in geometry and electron density. Residues are color-coded according to the number of geometric quality criteria for which they contain at least one outlier: green = 0, yellow = 1, orange = 2 and red = 3 or more. A red dot above a residue indicates a poor fit to the electron density ($RSRZ > 2$). Stretches of 2 or more consecutive residues without any outlier are shown as a green connector. Residues present in the sample, but not in the model, are shown in grey.

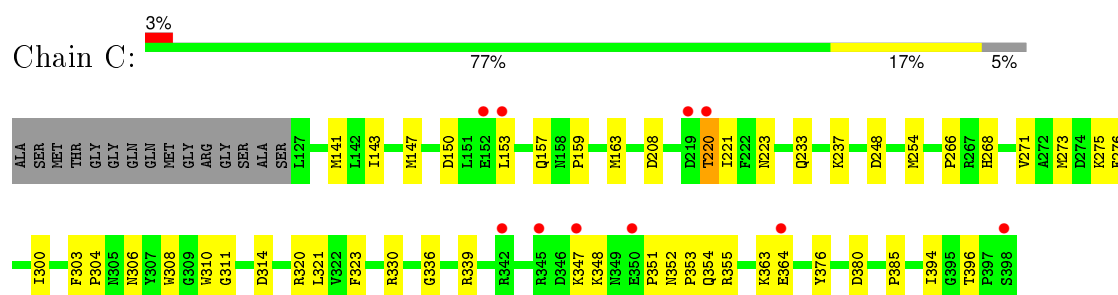
• Molecule 1: Beta-1,4-galactosyltransferase 1



• Molecule 1: Beta-1,4-galactosyltransferase 1



• Molecule 1: Beta-1,4-galactosyltransferase 1



4 Data and refinement statistics

Property	Value	Source
Space group	C 2 2 21	Depositor
Cell constants a, b, c, α , β , γ	107.50Å 195.36Å 144.02Å 90.00° 90.00° 90.00°	Depositor
Resolution (Å)	40.00 – 2.00 36.72 – 2.00	Depositor EDS
% Data completeness (in resolution range)	99.8 (40.00-2.00) 99.8 (36.72-2.00)	Depositor EDS
R_{merge}	(Not available)	Depositor
R_{sym}	0.06	Depositor
$\langle I/\sigma(I) \rangle$ ¹	3.15 (at 2.00Å)	Xtriage
Refinement program	CNS 1.1	Depositor
R, R_{free}	0.202 , 0.224 0.211 , (Not available)	Depositor DCC
R_{free} test set	No test flags present.	DCC
Wilson B-factor (Å ²)	23.0	Xtriage
Anisotropy	0.655	Xtriage
Bulk solvent k_{sol} (e/Å ³), B_{sol} (Å ²)	0.38 , 53.3	EDS
Estimated twinning fraction	0.002 for 1/2*h-1/2*k,-3/2*h-1/2*k,-l 0.015 for 1/2*h+1/2*k,3/2*h-1/2*k,-l	Xtriage
L-test for twinning ²	$\langle L \rangle = 0.51$, $\langle L^2 \rangle = 0.34$	Xtriage
Outliers	0 of 102079 reflections	Xtriage
F_o, F_c correlation	0.95	EDS
Total number of atoms	7558	wwPDB-VP
Average B, all atoms (Å ²)	27.0	wwPDB-VP

Xtriage's analysis on translational NCS is as follows: *The largest off-origin peak in the Patterson function is 3.86% of the height of the origin peak. No significant pseudotranslation is detected.*

¹Intensities estimated from amplitudes.

²Theoretical values of $\langle |L| \rangle$, $\langle L^2 \rangle$ for acentric reflections are 0.5, 0.375 respectively for untwinned datasets, and 0.333, 0.2 for perfectly twinned datasets.

5 Model quality [i](#)

5.1 Standard geometry [i](#)

Bond lengths and bond angles in the following residue types are not validated in this section: GOL, DIO, MN, SO4, MES, UDH, CTO

The Z score for a bond length (or angle) is the number of standard deviations the observed value is removed from the expected value. A bond length (or angle) with $|Z| > 5$ is considered an outlier worth inspection. RMSZ is the root-mean-square of all Z scores of the bond lengths (or angles).

Mol	Chain	Bond lengths		Bond angles	
		RMSZ	# $ Z > 5$	RMSZ	# $ Z > 5$
1	A	0.49	0/2274	0.69	1/3089 (0.0%)
1	B	0.52	0/2274	0.70	2/3089 (0.1%)
1	C	0.46	0/2274	0.68	2/3089 (0.1%)
All	All	0.49	0/6822	0.69	5/9267 (0.1%)

There are no bond length outliers.

All (5) bond angle outliers are listed below:

Mol	Chain	Res	Type	Atoms	Z	Observed(°)	Ideal(°)
1	C	208	ASP	N-CA-C	-5.38	96.46	111.00
1	C	311	GLY	N-CA-C	5.29	126.31	113.10
1	B	208	ASP	N-CA-C	-5.27	96.77	111.00
1	B	311	GLY	N-CA-C	5.25	126.22	113.10
1	A	208	ASP	N-CA-C	-5.02	97.45	111.00

There are no chirality outliers.

There are no planarity outliers.

5.2 Too-close contacts [i](#)

In the following table, the Non-H and H(model) columns list the number of non-hydrogen atoms and hydrogen atoms in the chain respectively. The H(added) column lists the number of hydrogen atoms added and optimized by MolProbity. The Clashes column lists the number of clashes within the asymmetric unit, whereas Symm-Clashes lists symmetry related clashes.

Mol	Chain	Non-H	H(model)	H(added)	Clashes	Symm-Clashes
1	A	2212	0	2157	22	0
1	B	2212	0	2157	28	0
1	C	2212	0	2157	41	0

Continued on next page...

Continued from previous page...

Mol	Chain	Non-H	H(model)	H(added)	Clashes	Symm-Clashes
2	A	43	0	41	0	0
2	B	43	0	41	0	0
2	C	43	0	41	0	0
3	A	1	0	0	0	0
3	B	1	0	0	0	0
3	C	1	0	0	0	0
4	A	20	0	0	0	0
4	B	35	0	0	0	0
4	C	25	0	0	0	0
5	A	32	0	25	0	0
5	B	32	0	25	1	0
5	C	32	0	25	1	0
6	A	6	0	8	4	0
6	C	6	0	8	3	0
7	C	12	0	13	6	0
8	A	12	0	16	2	0
8	B	24	0	32	5	0
8	C	6	0	8	2	0
9	A	189	0	0	0	0
9	B	206	0	0	3	0
9	C	153	0	0	2	0
All	All	7558	0	6754	94	0

The all-atom clashscore is defined as the number of clashes found per 1000 atoms (including hydrogen atoms). The all-atom clashscore for this structure is 7.

All (94) close contacts within the same asymmetric unit are listed below, sorted by their clash magnitude.

Atom-1	Atom-2	Interatomic distance (Å)	Clash overlap (Å)
1:C:268:HIS:HD2	1:C:330:ARG:HE	1.11	0.94
1:C:163:MET:HE1	1:C:385:PRO:HG3	1.50	0.92
1:B:324:ARG:HH11	1:B:367:LEU:HD21	1.43	0.83
1:B:268:HIS:HD2	1:B:330:ARG:HE	1.23	0.83
1:A:268:HIS:HD2	1:A:330:ARG:HE	1.29	0.78
1:A:157:GLN:HE22	6:A:432:DIO:H11	1.53	0.74
1:C:268:HIS:CD2	1:C:330:ARG:HE	2.01	0.71
1:A:150:ASP:OD1	1:A:153:LEU:HD13	1.92	0.70
1:A:273:MET:CE	1:A:275:LYS:HE2	2.22	0.69
1:C:352:ASN:OD1	1:C:354:GLN:HG2	1.91	0.69
1:A:273:MET:HE1	1:A:275:LYS:HE2	1.72	0.69
1:B:324:ARG:NH1	1:B:367:LEU:HD21	2.07	0.68

Continued on next page...

Continued from previous page...

Atom-1	Atom-2	Interatomic distance (Å)	Clash overlap (Å)
1:B:153:LEU:O	1:B:157:GLN:HG3	1.94	0.67
1:B:350:GLU:HG2	9:B:694:HOH:O	1.97	0.64
1:C:273:MET:CE	1:C:275:LYS:HE2	2.28	0.64
1:B:273:MET:CE	1:B:275:LYS:HE2	2.29	0.63
1:A:268:HIS:CD2	1:A:330:ARG:HE	2.14	0.62
1:B:268:HIS:CD2	1:B:330:ARG:HE	2.12	0.61
1:C:273:MET:HE2	1:C:275:LYS:HE2	1.85	0.59
1:A:157:GLN:C	1:A:159:PRO:HD3	2.25	0.57
1:C:306:ASN:HB3	6:C:431:DIO:H2'2	1.86	0.56
1:C:237:LYS:NZ	7:C:433:MES:H61	2.20	0.56
8:B:408:GOL:H31	9:B:445:HOH:O	2.06	0.55
1:B:268:HIS:HE1	1:B:287:GLY:O	1.93	0.52
1:B:273:MET:HE1	1:B:275:LYS:HE2	1.91	0.52
1:B:271:VAL:HG22	1:B:336:GLY:HA3	1.92	0.51
1:B:310:TRP:NE1	8:B:408:GOL:H12	2.25	0.51
1:A:254:MET:SD	1:A:337:THR:HG22	2.51	0.50
1:A:303:PHE:HB3	1:A:304:PRO:HD2	1.94	0.50
1:A:268:HIS:HB3	1:A:330:ARG:HG2	1.92	0.50
1:B:268:HIS:HB3	1:B:330:ARG:HG2	1.94	0.50
1:B:306:ASN:HB2	8:B:413:GOL:H2	1.93	0.49
1:C:273:MET:HE1	1:C:275:LYS:HE2	1.94	0.48
1:C:223:ASN:HB3	1:C:394:ILE:CD1	2.43	0.48
1:A:268:HIS:HE1	1:A:287:GLY:O	1.97	0.48
1:C:347:LYS:O	1:C:348:LYS:HB2	2.13	0.48
1:C:310:TRP:CE2	8:C:412:GOL:H12	2.48	0.48
1:C:237:LYS:HZ1	7:C:433:MES:H61	1.77	0.48
1:C:266:PRO:HG2	1:C:321:LEU:HD22	1.95	0.48
1:C:376:TYR:O	7:C:433:MES:H71	2.13	0.48
1:A:147:MET:HB2	1:A:148:PRO:HD2	1.95	0.48
1:C:303:PHE:HB3	1:C:304:PRO:HD2	1.96	0.47
1:A:347:LYS:O	1:A:348:LYS:HB2	2.13	0.47
1:C:163:MET:HE1	1:C:385:PRO:CG	2.34	0.47
1:C:376:TYR:N	7:C:433:MES:O3S	2.28	0.47
1:B:271:VAL:CG2	1:B:336:GLY:HA3	2.44	0.47
1:C:308:TRP:O	1:C:352:ASN:HB2	2.14	0.47
1:B:348:LYS:NZ	9:B:771:HOH:O	2.47	0.46
1:A:310:TRP:NE1	8:A:411:GOL:H12	2.30	0.46
1:B:254:MET:SD	1:B:337:THR:HG22	2.55	0.46
1:C:157:GLN:C	1:C:159:PRO:HD3	2.36	0.46
1:A:177:LYS:NZ	1:A:240:ASP:OD2	2.49	0.46
1:A:150:ASP:H	6:A:432:DIO:C1'	2.29	0.45

Continued on next page...

Continued from previous page...

Atom-1	Atom-2	Interatomic distance (Å)	Clash overlap (Å)
1:C:220:THR:HG23	1:C:221:ILE:N	2.31	0.45
1:C:273:MET:HE2	1:C:275:LYS:HG2	1.98	0.45
7:C:433:MES:H51	9:C:908:HOH:O	2.16	0.45
1:C:268:HIS:HB3	1:C:330:ARG:HG2	1.99	0.45
1:C:220:THR:OG1	1:C:396:THR:HG22	2.16	0.45
1:A:310:TRP:CE2	8:A:411:GOL:H12	2.51	0.45
1:B:226:LYS:HD3	1:B:394:ILE:HB	1.98	0.45
1:C:163:MET:HE2	1:C:385:PRO:HA	1.98	0.44
1:A:306:ASN:HD22	1:A:306:ASN:H	1.65	0.44
1:A:306:ASN:H	1:A:306:ASN:ND2	2.15	0.44
1:C:376:TYR:O	7:C:433:MES:O3S	2.34	0.44
1:B:254:MET:SD	1:B:339:ARG:HG3	2.57	0.44
1:B:310:TRP:CD1	8:B:408:GOL:H12	2.53	0.44
1:C:306:ASN:HD22	6:C:431:DIO:H21	1.83	0.44
1:B:216:GLN:OE1	1:B:394:ILE:HD11	2.18	0.43
1:A:157:GLN:NE2	6:A:432:DIO:H11	2.28	0.43
1:C:248:ASP:HB3	5:C:403:UDH:O3'	2.18	0.43
1:B:396:THR:HB	1:B:397:PRO:HD2	2.00	0.43
1:C:150:ASP:HB3	1:C:153:LEU:HD22	2.01	0.43
1:C:254:MET:SD	1:C:339:ARG:HG3	2.59	0.43
1:C:351:PRO:O	1:C:353:PRO:HD3	2.19	0.42
1:C:314:ASP:OD1	1:C:314:ASP:N	2.52	0.42
1:C:323:PHE:CE1	1:C:363:LYS:HB2	2.55	0.42
1:B:303:PHE:HB3	1:B:304:PRO:HD2	2.01	0.42
1:B:157:GLN:C	1:B:159:PRO:HD3	2.39	0.42
1:C:271:VAL:HG22	1:C:336:GLY:HA3	2.01	0.42
1:C:300:ILE:HB	1:C:320:ARG:HB3	2.03	0.41
1:C:266:PRO:CG	1:C:321:LEU:HD22	2.51	0.41
1:A:223:ASN:HB3	1:A:394:ILE:CD1	2.51	0.41
1:B:314:ASP:OD1	1:B:314:ASP:N	2.53	0.41
1:C:141:MET:HE2	1:C:143:ILE:HD11	2.02	0.41
1:C:220:THR:CG2	1:C:221:ILE:N	2.83	0.41
8:C:412:GOL:H31	9:C:517:HOH:O	2.19	0.41
1:C:275:LYS:HE3	1:C:276:PHE:CZ	2.56	0.41
1:B:306:ASN:CB	8:B:413:GOL:H2	2.50	0.40
1:C:308:TRP:HE1	6:C:431:DIO:H1'1	1.86	0.40
1:B:229:ASN:HB3	1:B:374:LEU:HD22	2.03	0.40
1:B:131:PRO:HG2	1:B:135:PRO:HD3	2.04	0.40
1:C:352:ASN:O	1:C:355:ARG:HG2	2.21	0.40
1:B:345:ARG:HG2	5:B:401:UDH:H2'1	2.03	0.40
1:A:150:ASP:H	6:A:432:DIO:H1'1	1.86	0.40

There are no symmetry-related clashes.

5.3 Torsion angles [i](#)

5.3.1 Protein backbone [i](#)

In the following table, the Percentiles column shows the percent Ramachandran outliers of the chain as a percentile score with respect to all X-ray entries followed by that with respect to entries of similar resolution.

The Analysed column shows the number of residues for which the backbone conformation was analysed, and the total number of residues.

Mol	Chain	Analysed	Favoured	Allowed	Outliers	Percentiles	
1	A	270/287 (94%)	263 (97%)	7 (3%)	0	100	100
1	B	270/287 (94%)	265 (98%)	5 (2%)	0	100	100
1	C	270/287 (94%)	260 (96%)	10 (4%)	0	100	100
All	All	810/861 (94%)	788 (97%)	22 (3%)	0	100	100

There are no Ramachandran outliers to report.

5.3.2 Protein sidechains [i](#)

In the following table, the Percentiles column shows the percent sidechain outliers of the chain as a percentile score with respect to all X-ray entries followed by that with respect to entries of similar resolution.

The Analysed column shows the number of residues for which the sidechain conformation was analysed, and the total number of residues.

Mol	Chain	Analysed	Rotameric	Outliers	Percentiles	
1	A	243/252 (96%)	238 (98%)	5 (2%)	61	63
1	B	243/252 (96%)	241 (99%)	2 (1%)	86	89
1	C	243/252 (96%)	238 (98%)	5 (2%)	61	63
All	All	729/756 (96%)	717 (98%)	12 (2%)	70	73

All (12) residues with a non-rotameric sidechain are listed below:

Mol	Chain	Res	Type
1	A	147	MET
1	A	186	ASN

Continued on next page...

Continued from previous page...

Mol	Chain	Res	Type
1	A	306	ASN
1	A	357	ASP
1	A	364	GLU
1	B	147	MET
1	B	153	LEU
1	C	147	MET
1	C	220	THR
1	C	233	GLN
1	C	364	GLU
1	C	380	ASP

Some sidechains can be flipped to improve hydrogen bonding and reduce clashes. All (10) such sidechains are listed below:

Mol	Chain	Res	Type
1	A	157	GLN
1	A	186	ASN
1	A	268	HIS
1	A	306	ASN
1	A	377	GLN
1	B	186	ASN
1	B	268	HIS
1	C	157	GLN
1	C	206	GLN
1	C	268	HIS

5.3.3 RNA ⓘ

There are no RNA molecules in this entry.

5.4 Non-standard residues in protein, DNA, RNA chains ⓘ

There are no non-standard protein/DNA/RNA residues in this entry.

5.5 Carbohydrates ⓘ

There are no carbohydrates in this entry.

5.6 Ligand geometry ⓘ

Of 35 ligands modelled in this entry, 3 are monoatomic - leaving 32 for Mogul analysis.

In the following table, the Counts columns list the number of bonds (or angles) for which Mogul statistics could be retrieved, the number of bonds (or angles) that are observed in the model and the number of bonds (or angles) that are defined in the chemical component dictionary. The Link column lists molecule types, if any, to which the group is linked. The Z score for a bond length (or angle) is the number of standard deviations the observed value is removed from the expected value. A bond length (or angle) with $|Z| > 2$ is considered an outlier worth inspection. RMSZ is the root-mean-square of all Z scores of the bond lengths (or angles).

Mol	Type	Chain	Res	Link	Bond lengths			Bond angles		
					Counts	RMSZ	# Z > 2	Counts	RMSZ	# Z > 2
5	UDH	A	399	3	25,33,33	1.70	3 (12%)	33,47,47	2.69	9 (27%)
2	CTO	A	405	-	45,45,45	1.97	13 (28%)	55,65,65	0.84	0
8	GOL	A	411	-	5,5,5	0.48	0	5,5,5	0.81	0
8	GOL	A	414	-	5,5,5	0.39	0	5,5,5	0.63	0
4	SO4	A	415	-	4,4,4	3.26	2 (50%)	6,6,6	0.96	0
4	SO4	A	416	-	4,4,4	3.11	2 (50%)	6,6,6	1.01	0
4	SO4	A	417	-	4,4,4	3.18	2 (50%)	6,6,6	0.98	0
4	SO4	A	426	-	4,4,4	3.28	2 (50%)	6,6,6	0.99	0
6	DIO	A	432	-	6,6,6	0.85	0	6,6,6	0.60	0
5	UDH	B	401	3	25,33,33	1.64	3 (12%)	33,47,47	2.63	9 (27%)
2	CTO	B	406	-	45,45,45	2.02	14 (31%)	55,65,65	0.78	0
8	GOL	B	408	-	5,5,5	0.44	0	5,5,5	0.93	0
8	GOL	B	409	-	5,5,5	0.36	0	5,5,5	0.76	0
8	GOL	B	410	-	5,5,5	0.36	0	5,5,5	0.51	0
8	GOL	B	413	-	5,5,5	0.30	0	5,5,5	0.55	0
4	SO4	B	418	-	4,4,4	3.16	2 (50%)	6,6,6	1.03	0
4	SO4	B	419	-	4,4,4	3.28	2 (50%)	6,6,6	0.98	0
4	SO4	B	421	-	4,4,4	3.15	2 (50%)	6,6,6	0.98	0
4	SO4	B	422	-	4,4,4	3.13	2 (50%)	6,6,6	0.93	0
4	SO4	B	425	-	4,4,4	3.28	2 (50%)	6,6,6	0.96	0
4	SO4	B	427	-	4,4,4	3.19	2 (50%)	6,6,6	1.00	0
4	SO4	B	430	-	4,4,4	3.12	2 (50%)	6,6,6	0.94	0
5	UDH	C	403	3	25,33,33	1.67	4 (16%)	33,47,47	2.72	7 (21%)
2	CTO	C	407	-	45,45,45	2.00	13 (28%)	55,65,65	0.80	0
8	GOL	C	412	-	5,5,5	0.34	0	5,5,5	0.68	0
4	SO4	C	420	-	4,4,4	3.10	2 (50%)	6,6,6	0.90	0
4	SO4	C	423	-	4,4,4	3.17	2 (50%)	6,6,6	0.97	0

Mol	Type	Chain	Res	Link	Bond lengths			Bond angles		
					Counts	RMSZ	# Z > 2	Counts	RMSZ	# Z > 2
4	SO4	C	424	-	4,4,4	3.24	2 (50%)	6,6,6	0.96	0
4	SO4	C	428	-	4,4,4	3.24	2 (50%)	6,6,6	0.97	0
4	SO4	C	429	-	4,4,4	3.33	2 (50%)	6,6,6	0.91	0
6	DIO	C	431	-	6,6,6	0.96	0	6,6,6	0.78	0
7	MES	C	433	-	11,12,12	1.81	4 (36%)	14,16,16	1.01	0

In the following table, the Chirals column lists the number of chiral outliers, the number of chiral centers analysed, the number of these observed in the model and the number defined in the chemical component dictionary. Similar counts are reported in the Torsion and Rings columns. '-' means no outliers of that kind were identified.

Mol	Type	Chain	Res	Link	Chirals	Torsions	Rings
5	UDH	A	399	3	-	0/21/41/41	0/2/2/2
2	CTO	A	405	-	-	0/26/86/86	0/3/3/3
8	GOL	A	411	-	-	0/4/4/4	0/0/0/0
8	GOL	A	414	-	-	0/4/4/4	0/0/0/0
4	SO4	A	415	-	-	0/0/0/0	0/0/0/0
4	SO4	A	416	-	-	0/0/0/0	0/0/0/0
4	SO4	A	417	-	-	0/0/0/0	0/0/0/0
4	SO4	A	426	-	-	0/0/0/0	0/0/0/0
6	DIO	A	432	-	-	0/0/6/6	0/1/1/1
5	UDH	B	401	3	-	0/21/41/41	0/2/2/2
2	CTO	B	406	-	-	0/26/86/86	0/3/3/3
8	GOL	B	408	-	-	0/4/4/4	0/0/0/0
8	GOL	B	409	-	-	0/4/4/4	0/0/0/0
8	GOL	B	410	-	-	0/4/4/4	0/0/0/0
8	GOL	B	413	-	-	0/4/4/4	0/0/0/0
4	SO4	B	418	-	-	0/0/0/0	0/0/0/0
4	SO4	B	419	-	-	0/0/0/0	0/0/0/0
4	SO4	B	421	-	-	0/0/0/0	0/0/0/0
4	SO4	B	422	-	-	0/0/0/0	0/0/0/0
4	SO4	B	425	-	-	0/0/0/0	0/0/0/0
4	SO4	B	427	-	-	0/0/0/0	0/0/0/0
4	SO4	B	430	-	-	0/0/0/0	0/0/0/0
5	UDH	C	403	3	-	0/21/41/41	0/2/2/2
2	CTO	C	407	-	-	0/26/86/86	0/3/3/3
8	GOL	C	412	-	-	0/4/4/4	0/0/0/0
4	SO4	C	420	-	-	0/0/0/0	0/0/0/0
4	SO4	C	423	-	-	0/0/0/0	0/0/0/0
4	SO4	C	424	-	-	0/0/0/0	0/0/0/0
4	SO4	C	428	-	-	0/0/0/0	0/0/0/0
4	SO4	C	429	-	-	0/0/0/0	0/0/0/0

Continued on next page...

Continued from previous page...

Mol	Type	Chain	Res	Link	Chirals	Torsions	Rings
6	DIO	C	431	-	-	0/0/6/6	0/1/1/1
7	MES	C	433	-	-	0/6/14/14	0/1/1/1

All (86) bond length outliers are listed below:

Mol	Chain	Res	Type	Atoms	Z	Observed(Å)	Ideal(Å)
4	C	423	SO4	O3-S	-4.66	1.30	1.47
4	B	425	SO4	O3-S	-4.60	1.30	1.47
4	C	429	SO4	O3-S	-4.56	1.31	1.47
4	A	426	SO4	O3-S	-4.55	1.31	1.47
4	B	419	SO4	O3-S	-4.55	1.31	1.47
4	C	424	SO4	O3-S	-4.48	1.31	1.47
4	A	415	SO4	O3-S	-4.45	1.31	1.47
4	C	428	SO4	O3-S	-4.44	1.31	1.47
4	B	421	SO4	O3-S	-4.40	1.31	1.47
4	B	427	SO4	O3-S	-4.39	1.31	1.47
4	B	422	SO4	O3-S	-4.34	1.31	1.47
4	B	430	SO4	O3-S	-4.33	1.31	1.47
4	A	416	SO4	O3-S	-4.32	1.31	1.47
4	B	418	SO4	O3-S	-4.32	1.31	1.47
4	A	417	SO4	O3-S	-4.31	1.31	1.47
4	C	420	SO4	O3-S	-4.23	1.32	1.47
5	C	403	UDH	C6-C5	-2.14	1.33	1.38
5	C	403	UDH	PB-O1B	2.03	1.58	1.51
7	C	433	MES	O1S-S	2.05	1.51	1.45
2	B	406	CTO	C33-C23	2.16	1.57	1.53
2	B	406	CTO	C22-N22	2.18	1.49	1.45
2	C	407	CTO	C23-N23	2.20	1.49	1.45
2	C	407	CTO	C22-N22	2.26	1.49	1.45
2	A	405	CTO	C42-C52	2.29	1.59	1.52
2	C	407	CTO	C12-C22	2.32	1.57	1.53
5	A	399	UDH	PB-O1B	2.33	1.59	1.51
2	C	407	CTO	C32-C22	2.38	1.58	1.53
7	C	433	MES	C5-N4	2.41	1.53	1.46
2	A	405	CTO	C23-N23	2.41	1.49	1.45
2	B	406	CTO	C42-C52	2.42	1.59	1.52
2	B	406	CTO	C23-N23	2.42	1.49	1.45
2	C	407	CTO	C42-C52	2.48	1.59	1.52
7	C	433	MES	O2S-S	2.49	1.53	1.45
2	B	406	CTO	O52-C12	2.49	1.48	1.41
2	A	405	CTO	C12-C22	2.51	1.57	1.53
5	B	401	UDH	PB-O1B	2.52	1.60	1.51

Continued on next page...

Continued from previous page...

Mol	Chain	Res	Type	Atoms	Z	Observed(Å)	Ideal(Å)
2	A	405	CTO	C43-C53	2.63	1.60	1.52
2	C	407	CTO	C43-C53	2.70	1.60	1.52
2	A	405	CTO	C22-N22	2.72	1.50	1.45
2	A	405	CTO	O52-C12	2.79	1.49	1.41
2	C	407	CTO	O52-C12	2.82	1.49	1.41
2	B	406	CTO	C43-C53	2.84	1.60	1.52
2	B	406	CTO	C32-C22	2.85	1.58	1.53
2	B	406	CTO	C12-C22	2.87	1.58	1.53
2	A	405	CTO	C32-C22	2.89	1.59	1.53
2	A	405	CTO	O53-C53	2.99	1.51	1.44
2	A	405	CTO	C41-C51	2.99	1.59	1.53
2	C	407	CTO	O53-C53	3.06	1.52	1.44
2	B	406	CTO	O53-C53	3.26	1.52	1.44
7	C	433	MES	C3-N4	3.29	1.55	1.46
2	B	406	CTO	C41-C51	3.40	1.60	1.53
2	C	407	CTO	C41-C51	3.73	1.61	1.53
2	B	406	CTO	C21-N21	3.88	1.52	1.45
2	A	405	CTO	C13-C23	4.13	1.57	1.53
2	C	407	CTO	C21-N21	4.17	1.52	1.45
5	B	401	UDH	C4-N3	4.18	1.40	1.33
4	C	423	SO4	O1-S	4.22	1.61	1.47
2	C	407	CTO	C13-C23	4.36	1.58	1.53
4	A	416	SO4	O1-S	4.41	1.62	1.47
4	B	421	SO4	O1-S	4.42	1.62	1.47
4	B	422	SO4	O1-S	4.42	1.62	1.47
4	B	430	SO4	O1-S	4.43	1.62	1.47
2	A	405	CTO	C21-N21	4.43	1.53	1.45
4	C	420	SO4	O1-S	4.44	1.62	1.47
5	B	401	UDH	C6-N1	4.45	1.42	1.35
2	B	406	CTO	O53-C13	4.53	1.51	1.43
4	B	425	SO4	O1-S	4.53	1.62	1.47
5	C	403	UDH	C4-N3	4.56	1.41	1.33
4	B	427	SO4	O1-S	4.56	1.62	1.47
4	B	418	SO4	O1-S	4.56	1.62	1.47
4	A	417	SO4	O1-S	4.58	1.62	1.47
4	C	424	SO4	O1-S	4.58	1.62	1.47
5	A	399	UDH	C4-N3	4.60	1.41	1.33
4	C	428	SO4	O1-S	4.63	1.63	1.47
4	B	419	SO4	O1-S	4.63	1.63	1.47
2	A	405	CTO	O53-C13	4.63	1.51	1.43
2	C	407	CTO	O53-C13	4.64	1.51	1.43
4	A	426	SO4	O1-S	4.65	1.63	1.47

Continued on next page...

Continued from previous page...

Mol	Chain	Res	Type	Atoms	Z	Observed(Å)	Ideal(Å)
4	A	415	SO4	O1-S	4.66	1.63	1.47
2	A	405	CTO	C11-C21	4.75	1.61	1.53
2	B	406	CTO	C13-C23	4.78	1.58	1.53
4	C	429	SO4	O1-S	4.79	1.63	1.47
5	C	403	UDH	C6-N1	4.81	1.42	1.35
2	B	406	CTO	C11-C21	5.01	1.61	1.53
5	A	399	UDH	C6-N1	5.05	1.42	1.35
2	C	407	CTO	C11-C21	5.10	1.62	1.53

All (25) bond angle outliers are listed below:

Mol	Chain	Res	Type	Atoms	Z	Observed(°)	Ideal(°)
5	A	399	UDH	O4'-C4B-C3B	-3.48	98.13	105.15
5	B	401	UDH	O4'-C4B-C3B	-3.39	98.32	105.15
5	C	403	UDH	C5-C4-N3	-3.22	114.86	123.12
5	A	399	UDH	C5-C4-N3	-3.17	114.99	123.12
5	C	403	UDH	O4'-C4B-C3B	-3.01	99.07	105.15
5	C	403	UDH	PB-O3A-PA	-2.98	124.35	132.73
5	B	401	UDH	C5-C4-N3	-2.98	115.48	123.12
5	B	401	UDH	PB-O3A-PA	-2.71	125.11	132.73
5	A	399	UDH	C4'-C5'-C6'	-2.19	103.67	114.01
5	B	401	UDH	C3'-C2'-C1'	-2.19	103.69	113.47
5	A	399	UDH	C3'-C2'-C1'	-2.18	103.71	113.47
5	B	401	UDH	C5'-C4'-C3'	-2.17	103.31	114.53
5	C	403	UDH	C5'-C4'-C3'	-2.16	103.37	114.53
5	A	399	UDH	PB-O3A-PA	-2.13	126.75	132.73
5	A	399	UDH	C5'-C4'-C3'	-2.13	103.55	114.53
5	B	401	UDH	C4'-C5'-C6'	-2.11	104.05	114.01
5	C	403	UDH	C4'-C5'-C6'	-2.10	104.09	114.01
5	A	399	UDH	C4'-C3'-C2'	-2.08	103.81	114.53
5	B	401	UDH	C4'-C3'-C2'	-2.05	103.97	114.53
5	B	401	UDH	O3B-PB-O1B	2.21	124.49	112.53
5	A	399	UDH	O3B-PB-O1B	2.51	126.15	112.53
5	C	403	UDH	O3B-PB-O1B	2.69	127.13	112.53
5	B	401	UDH	C4-N3-C2	12.42	126.44	114.14
5	A	399	UDH	C4-N3-C2	12.77	126.79	114.14
5	C	403	UDH	C4-N3-C2	12.84	126.86	114.14

There are no chirality outliers.

There are no torsion outliers.

There are no ring outliers.

9 monomers are involved in 24 short contacts:

Mol	Chain	Res	Type	Clashes	Symm-Clashes
8	A	411	GOL	2	0
6	A	432	DIO	4	0
5	B	401	UDH	1	0
8	B	408	GOL	3	0
8	B	413	GOL	2	0
5	C	403	UDH	1	0
8	C	412	GOL	2	0
6	C	431	DIO	3	0
7	C	433	MES	6	0

5.7 Other polymers [i](#)

There are no such residues in this entry.

5.8 Polymer linkage issues [i](#)

There are no chain breaks in this entry.

6 Fit of model and data [i](#)

6.1 Protein, DNA and RNA chains [i](#)

In the following table, the column labelled ‘#RSRZ> 2’ contains the number (and percentage) of RSRZ outliers, followed by percent RSRZ outliers for the chain as percentile scores relative to all X-ray entries and entries of similar resolution. The OWAB column contains the minimum, median, 95th percentile and maximum values of the occupancy-weighted average B-factor per residue. The column labelled ‘Q< 0.9’ lists the number of (and percentage) of residues with an average occupancy less than 0.9.

Mol	Chain	Analysed	<RSRZ>	#RSRZ>2	OWAB(Å ²)	Q<0.9
1	A	272/287 (94%)	-0.02	9 (3%) 50 51	15, 24, 41, 51	0
1	B	272/287 (94%)	-0.02	7 (2%) 59 60	14, 20, 35, 47	0
1	C	272/287 (94%)	0.18	10 (3%) 45 47	18, 28, 46, 56	0
All	All	816/861 (94%)	0.04	26 (3%) 51 52	14, 24, 42, 56	0

All (26) RSRZ outliers are listed below:

Mol	Chain	Res	Type	RSRZ
1	C	220	THR	4.3
1	B	398	SER	4.1
1	A	347	LYS	3.8
1	C	398	SER	3.7
1	C	347	LYS	3.3
1	C	153	LEU	3.0
1	A	153	LEU	2.9
1	C	350	GLU	2.8
1	A	353	PRO	2.6
1	B	367	LEU	2.6
1	A	342	ARG	2.4
1	A	156	LYS	2.4
1	A	219	ASP	2.3
1	C	342	ARG	2.3
1	C	219	ASP	2.2
1	B	132	GLU	2.2
1	C	152	GLU	2.2
1	A	345	ARG	2.2
1	C	345	ARG	2.2
1	B	182	ILE	2.2
1	A	357	ASP	2.1
1	B	289	VAL	2.1
1	A	350	GLU	2.1

Continued on next page...

Continued from previous page...

Mol	Chain	Res	Type	RSRZ
1	C	364	GLU	2.1
1	B	183	PRO	2.1
1	B	146	ASN	2.0

6.2 Non-standard residues in protein, DNA, RNA chains [i](#)

There are no non-standard protein/DNA/RNA residues in this entry.

6.3 Carbohydrates [i](#)

There are no carbohydrates in this entry.

6.4 Ligands [i](#)

In the following table, the Atoms column lists the number of modelled atoms in the group and the number defined in the chemical component dictionary. LLDF column lists the quality of electron density of the group with respect to its neighbouring residues in protein, DNA or RNA chains. The B-factors column lists the minimum, median, 95th percentile and maximum values of B factors of atoms in the group. The column labelled 'Q < 0.9' lists the number of atoms with occupancy less than 0.9.

Mol	Type	Chain	Res	Atoms	RSCC	RSR	LLDF	B-factors(Å ²)	Q<0.9
7	MES	C	433	12/12	0.53	0.32	13.20	52,56,66,67	0
8	GOL	A	414	6/6	0.81	0.34	10.76	51,52,54,55	0
8	GOL	B	409	6/6	0.76	0.26	7.58	39,42,43,47	0
8	GOL	A	411	6/6	0.92	0.20	6.10	30,36,37,40	0
2	CTO	A	405	43/43	0.88	0.18	4.41	20,47,66,67	0
2	CTO	B	406	43/43	0.87	0.19	3.43	19,36,57,58	0
2	CTO	C	407	43/43	0.82	0.21	2.50	35,54,69,72	0
6	DIO	A	432	6/6	0.83	0.28	2.40	68,68,69,69	0
4	SO4	B	422	5/5	0.91	0.22	2.14	54,56,57,58	0
8	GOL	C	412	6/6	0.90	0.16	1.88	36,38,39,41	0
8	GOL	B	408	6/6	0.92	0.17	1.21	24,30,32,32	0
8	GOL	B	413	6/6	0.76	0.23	0.85	46,49,50,53	0
6	DIO	C	431	6/6	0.72	0.25	0.57	55,56,56,57	0
4	SO4	A	416	5/5	0.93	0.17	0.30	51,54,55,55	0
4	SO4	B	421	5/5	0.93	0.18	0.28	71,71,72,73	0
8	GOL	B	410	6/6	0.97	0.11	0.20	18,22,24,25	0
4	SO4	C	420	5/5	0.96	0.14	0.16	40,43,44,44	0
5	UDH	B	401	32/32	0.96	0.14	-0.29	14,18,51,55	0

Continued on next page...

Continued from previous page...

Mol	Type	Chain	Res	Atoms	RSCC	RSR	LLDF	B-factors(\AA^2)	Q<0.9
5	UDH	A	399	32/32	0.96	0.12	-0.36	21,25,48,51	0
5	UDH	C	403	32/32	0.96	0.12	-0.66	26,30,51,55	0
4	SO4	C	423	5/5	0.94	0.13	-0.74	76,76,77,77	0
4	SO4	A	415	5/5	0.93	0.11	-0.94	72,72,73,73	0
4	SO4	C	429	5/5	0.86	0.27	-	77,78,79,79	0
4	SO4	B	427	5/5	0.89	0.26	-	67,68,69,69	0
3	MN	C	404	1/1	0.98	0.07	-	31,31,31,31	0
4	SO4	C	428	5/5	0.90	0.42	-	94,95,95,95	0
4	SO4	A	426	5/5	0.92	0.29	-	81,81,81,82	0
4	SO4	B	419	5/5	0.90	0.32	-	88,88,88,88	0
4	SO4	B	430	5/5	0.85	0.44	-	79,80,80,81	0
3	MN	B	402	1/1	0.99	0.08	-	19,19,19,19	0
3	MN	A	400	1/1	0.99	0.07	-	26,26,26,26	0
4	SO4	B	418	5/5	0.91	0.25	-	62,62,63,64	0
4	SO4	B	425	5/5	0.97	0.16	-	74,74,74,74	0
4	SO4	A	417	5/5	0.91	0.29	-	66,67,67,68	0
4	SO4	C	424	5/5	0.92	0.20	-	86,86,87,87	0

6.5 Other polymers [i](#)

There are no such residues in this entry.