



Full wwPDB X-ray Structure Validation Report ⓘ

Feb 27, 2016 – 11:11 AM GMT

PDB ID : 5AHK
Title : Crystal structure of acetohydroxy acid synthase Pf5 from Pseudomonas protegens
Authors : Dobritsch, D.; Loschonsky, S.; Mueller, M.; Schneider, G.
Deposited on : 2015-02-06
Resolution : 1.55 Å(reported)

This is a Full wwPDB X-ray Structure Validation Report for a publicly released PDB entry.
We welcome your comments at validation@mail.wwpdb.org
A user guide is available at
<http://wwpdb.org/validation/2016/XrayValidationReportHelp>
with specific help available everywhere you see the ⓘ symbol.

The following versions of software and data (see [references ⓘ](#)) were used in the production of this report:

MolProbity : 4.02b-467
Mogul : 1.7.1 (RC1), CSD as537be (2016)
Xtriage (Phenix) : 1.9-1692
EDS : rb-20026982
Percentile statistics : 20151230.v01 (using entries in the PDB archive December 30th 2015)
Refmac : 5.8.0135
CCP4 : 6.5.0
Ideal geometry (proteins) : Engh & Huber (2001)
Ideal geometry (DNA, RNA) : Parkinson et al. (1996)
Validation Pipeline (wwPDB-VP) : rb-20026982

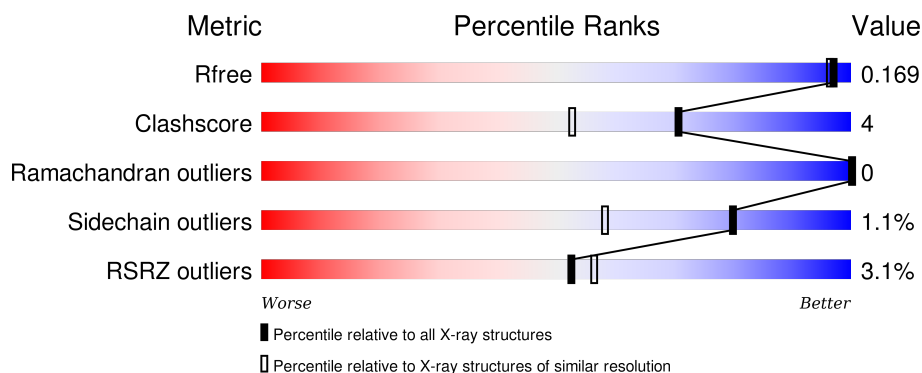
1 Overall quality at a glance

The following experimental techniques were used to determine the structure:

X-RAY DIFFRACTION


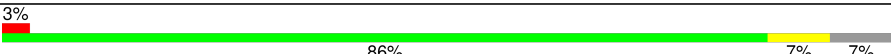
The reported resolution of this entry is 1.55 Å.

Percentile scores (ranging between 0-100) for global validation metrics of the entry are shown in the following graphic. The table shows the number of entries on which the scores are based.



Metric	Whole archive (#Entries)	Similar resolution (#Entries, resolution range(Å))
R_{free}	91344	1665 (1.58-1.54)
Clashscore	102246	1014 (1.56-1.56)
Ramachandran outliers	100387	1704 (1.58-1.54)
Sidechain outliers	100360	1702 (1.58-1.54)
RSRZ outliers	91569	1668 (1.58-1.54)

The table below summarises the geometric issues observed across the polymeric chains and their fit to the electron density. The red, orange, yellow and green segments on the lower bar indicate the fraction of residues that contain outliers for ≥ 3 , 2, 1 and 0 types of geometric quality criteria. A grey segment represents the fraction of residues that are not modelled. The numeric value for each fraction is indicated below the corresponding segment, with a dot representing fractions $\leq 5\%$. The upper red bar (where present) indicates the fraction of residues that have poor fit to the electron density. The numeric value is given above the bar.

Mol	Chain	Length	Quality of chain
1	A	588	 3% 84% 9% • 6%
1	B	588	 3% 86% 7% 7%

2 Entry composition

There are 5 unique types of molecules in this entry. The entry contains 9810 atoms, of which 0 are hydrogens and 0 are deuteriums.

In the tables below, the ZeroOcc column contains the number of atoms modelled with zero occupancy, the AltConf column contains the number of residues with at least one atom in alternate conformation and the Trace column contains the number of residues modelled with at most 2 atoms.

- Molecule 1 is a protein called ACETOLACTATE SYNTHASE II, LARGE SUBUNIT.

Mol	Chain	Residues	Atoms					ZeroOcc	AltConf	Trace
1	A	555	Total	C	N	O	S	0	27	0
			4437	2824	762	827	24			
1	B	546	Total	C	N	O	S	0	23	0
			4328	2756	740	811	21			

There are 40 discrepancies between the modelled and reference sequences:

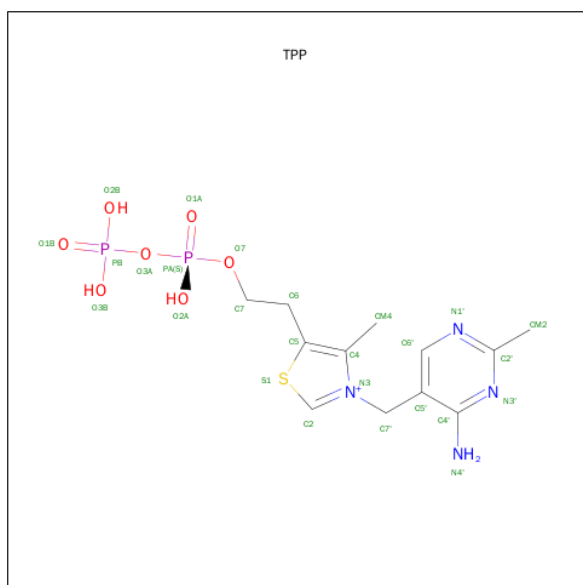
Chain	Residue	Modelled	Actual	Comment	Reference
A	-19	MET	-	EXPRESSION TAG	UNP Q4K6F7
A	-18	GLY	-	EXPRESSION TAG	UNP Q4K6F7
A	-17	SER	-	EXPRESSION TAG	UNP Q4K6F7
A	-16	SER	-	EXPRESSION TAG	UNP Q4K6F7
A	-15	HIS	-	EXPRESSION TAG	UNP Q4K6F7
A	-14	HIS	-	EXPRESSION TAG	UNP Q4K6F7
A	-13	HIS	-	EXPRESSION TAG	UNP Q4K6F7
A	-12	HIS	-	EXPRESSION TAG	UNP Q4K6F7
A	-11	HIS	-	EXPRESSION TAG	UNP Q4K6F7
A	-10	HIS	-	EXPRESSION TAG	UNP Q4K6F7
A	-9	SER	-	EXPRESSION TAG	UNP Q4K6F7
A	-8	SER	-	EXPRESSION TAG	UNP Q4K6F7
A	-7	GLY	-	EXPRESSION TAG	UNP Q4K6F7
A	-6	LEU	-	EXPRESSION TAG	UNP Q4K6F7
A	-5	VAL	-	EXPRESSION TAG	UNP Q4K6F7
A	-4	PRO	-	EXPRESSION TAG	UNP Q4K6F7
A	-3	ARG	-	EXPRESSION TAG	UNP Q4K6F7
A	-2	GLY	-	EXPRESSION TAG	UNP Q4K6F7
A	-1	SER	-	EXPRESSION TAG	UNP Q4K6F7
A	0	HIS	-	EXPRESSION TAG	UNP Q4K6F7
B	-19	MET	-	EXPRESSION TAG	UNP Q4K6F7
B	-18	GLY	-	EXPRESSION TAG	UNP Q4K6F7
B	-17	SER	-	EXPRESSION TAG	UNP Q4K6F7
B	-16	SER	-	EXPRESSION TAG	UNP Q4K6F7
B	-15	HIS	-	EXPRESSION TAG	UNP Q4K6F7

Continued on next page...

Continued from previous page...

Chain	Residue	Modelled	Actual	Comment	Reference
B	-14	HIS	-	EXPRESSION TAG	UNP Q4K6F7
B	-13	HIS	-	EXPRESSION TAG	UNP Q4K6F7
B	-12	HIS	-	EXPRESSION TAG	UNP Q4K6F7
B	-11	HIS	-	EXPRESSION TAG	UNP Q4K6F7
B	-10	HIS	-	EXPRESSION TAG	UNP Q4K6F7
B	-9	SER	-	EXPRESSION TAG	UNP Q4K6F7
B	-8	SER	-	EXPRESSION TAG	UNP Q4K6F7
B	-7	GLY	-	EXPRESSION TAG	UNP Q4K6F7
B	-6	LEU	-	EXPRESSION TAG	UNP Q4K6F7
B	-5	VAL	-	EXPRESSION TAG	UNP Q4K6F7
B	-4	PRO	-	EXPRESSION TAG	UNP Q4K6F7
B	-3	ARG	-	EXPRESSION TAG	UNP Q4K6F7
B	-2	GLY	-	EXPRESSION TAG	UNP Q4K6F7
B	-1	SER	-	EXPRESSION TAG	UNP Q4K6F7
B	0	HIS	-	EXPRESSION TAG	UNP Q4K6F7

- Molecule 2 is THIAMINE DIPHOSPHATE (three-letter code: TPP) (formula: $C_{12}H_{19}N_4O_7P_2S$).



Mol	Chain	Residues	Atoms						ZeroOcc	AltConf
2	A	1	Total	C	N	O	P	S	0	0
			26	12	4	7	2	1		
2	B	1	Total	C	N	O	P	S	0	0
			26	12	4	7	2	1		

- Molecule 3 is FLAVIN-ADENINE DINUCLEOTIDE (three-letter code: FAD) (formula: $C_{27}H_{33}N_9O_{15}P_2$).



Mol	Chain	Residues	Atoms					ZeroOcc	AltConf
3	A	1	Total 53	C 27	N 9	O 15	P 2	0	0
3	B	1	Total 53	C 27	N 9	O 15	P 2	0	0

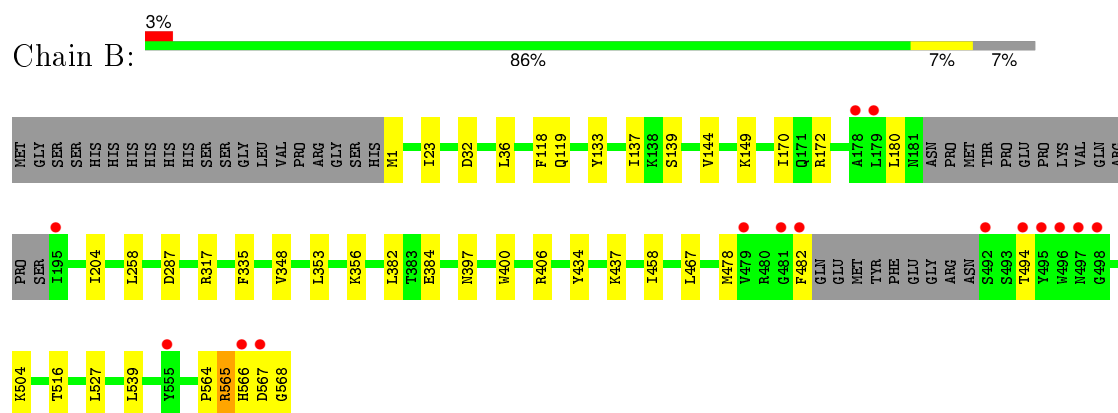
- Molecule 4 is MAGNESIUM ION (three-letter code: MG) (formula: Mg).

Mol	Chain	Residues	Atoms		ZeroOcc	AltConf
4	B	1	Total	Mg	0	0
			1	1		
4	A	1	Total	Mg	0	0
			1	1		

- Molecule 5 is water.

Mol	Chain	Residues	Atoms		ZeroOcc	AltConf
5	A	417	Total	O	0	3
			420	420		
5	B	454	Total	O	0	11
			465	465		

- Molecule 1: ACETOLACTATE SYNTHASE II, LARGE SUBUNIT



4 Data and refinement statistics

Property	Value	Source
Space group	P 1 21 1	Depositor
Cell constants a, b, c, α , β , γ	65.22Å 139.87Å 65.34Å 90.00° 97.87° 90.00°	Depositor
Resolution (Å)	49.22 – 1.55 49.22 – 1.55	Depositor EDS
% Data completeness (in resolution range)	90.2 (49.22-1.55) 90.2 (49.22-1.55)	Depositor EDS
R_{merge}	0.07	Depositor
R_{sym}	(Not available)	Depositor
$\langle I/\sigma(I) \rangle$ ¹	2.40 (at 1.55Å)	Xtriage
Refinement program	REFMAC 5.8.0073	Depositor
R, R_{free}	0.151 , 0.174 0.152 , 0.169	Depositor DCC
R_{free} test set	7662 reflections (5.32%)	DCC
Wilson B-factor (Å ²)	14.1	Xtriage
Anisotropy	0.269	Xtriage
Bulk solvent k_{sol} (e/Å ³), B_{sol} (Å ²)	0.36 , 27.5	EDS
Estimated twinning fraction	0.526 for H, K, L 0.474 for L, -K, H 0.458 for l,-k,h	Xtriage
Reported twinning fraction	0.526 for H, K, L 0.474 for L, -K, H	Depositor
L-test for twinning ²	$\langle L \rangle = 0.43$, $\langle L^2 \rangle = 0.26$	Xtriage
Outliers	1 of 151771 reflections (0.001%)	Xtriage
F_o, F_c correlation	0.97	EDS
Total number of atoms	9810	wwPDB-VP
Average B, all atoms (Å ²)	17.0	wwPDB-VP

Xtriage's analysis on translational NCS is as follows: *The largest off-origin peak in the Patterson function is 6.96% of the height of the origin peak. No significant pseudotranslation is detected.*

¹Intensities estimated from amplitudes.

²Theoretical values of $\langle |L| \rangle$, $\langle L^2 \rangle$ for acentric reflections are 0.5, 0.375 respectively for untwinned datasets, and 0.333, 0.2 for perfectly twinned datasets.

5 Model quality

5.1 Standard geometry

Bond lengths and bond angles in the following residue types are not validated in this section: MG, FAD, TPP

The Z score for a bond length (or angle) is the number of standard deviations the observed value is removed from the expected value. A bond length (or angle) with $|Z| > 5$ is considered an outlier worth inspection. RMSZ is the root-mean-square of all Z scores of the bond lengths (or angles).

Mol	Chain	Bond lengths		Bond angles	
		RMSZ	# Z >5	RMSZ	# Z >5
1	A	0.49	0/4597	0.75	5/6214 (0.1%)
1	B	0.50	0/4474	0.71	2/6051 (0.0%)
All	All	0.49	0/9071	0.73	7/12265 (0.1%)

Chiral center outliers are detected by calculating the chiral volume of a chiral center and verifying if the center is modelled as a planar moiety or with the opposite hand. A planarity outlier is detected by checking planarity of atoms in a peptide group, atoms in a mainchain group or atoms of a sidechain that are expected to be planar.

Mol	Chain	#Chirality outliers	#Planarity outliers
1	A	0	2

There are no bond length outliers.

All (7) bond angle outliers are listed below:

Mol	Chain	Res	Type	Atoms	Z	Observed(°)	Ideal(°)
1	A	406[A]	ARG	NE-CZ-NH1	10.17	125.39	120.30
1	A	406[B]	ARG	NE-CZ-NH1	10.17	125.39	120.30
1	A	406[A]	ARG	NE-CZ-NH2	-6.61	117.00	120.30
1	A	406[B]	ARG	NE-CZ-NH2	-6.61	117.00	120.30
1	A	480	ARG	NE-CZ-NH1	5.49	123.05	120.30
1	B	406	ARG	NE-CZ-NH1	5.19	122.90	120.30
1	B	406	ARG	NE-CZ-NH2	-5.10	117.75	120.30

There are no chirality outliers.

All (2) planarity outliers are listed below:

Mol	Chain	Res	Type	Group
1	A	554	GLU	Peptide

5.2 Too-close contacts ⓘ

In the following table, the Non-H and H(model) columns list the number of non-hydrogen atoms and hydrogen atoms in the chain respectively. The H(added) column lists the number of hydrogen atoms added and optimized by MolProbity. The Clashes column lists the number of clashes within the asymmetric unit, whereas Symm-Clashes lists symmetry related clashes.

Mol	Chain	Non-H	H(model)	H(added)	Clashes	Symm-Clashes
1	A	4437	0	4533	48	0
1	B	4328	0	4420	34	0
2	A	26	0	16	0	0
2	B	26	0	16	0	0
3	A	53	0	31	0	0
3	B	53	0	31	0	0
4	A	1	0	0	0	0
4	B	1	0	0	0	0
5	A	420	0	0	9	0
5	B	465	0	0	8	0
All	All	9810	0	9047	79	0

The all-atom clashscore is defined as the number of clashes found per 1000 atoms (including hydrogen atoms). The all-atom clashscore for this structure is 4.

All (79) close contacts within the same asymmetric unit are listed below, sorted by their clash magnitude.

Atom-1	Atom-2	Interatomic distance (Å)	Clash overlap (Å)
1:A:472:ASN:HD21	1:A:500:THR:HG21	1.23	1.01
1:B:565:ARG:HE	1:B:566:HIS:HB3	1.28	0.96
1:B:565:ARG:NE	1:B:566:HIS:HB3	1.81	0.95
1:B:434:TYR:O	1:B:437:LYS:HE2	1.67	0.94
1:A:491:ASN:ND2	5:A:2374:HOH:O	2.14	0.80
1:B:348:VAL:HG23	5:B:2320:HOH:O	1.84	0.78
1:B:565:ARG:HE	1:B:566:HIS:CB	2.01	0.70
1:A:381:LYS:O	1:A:384:GLU:HG3	1.93	0.69
1:A:111:ARG:NH2	5:A:2112:HOH:O	2.21	0.69
1:A:472:ASN:HD21	1:A:500:THR:CG2	2.05	0.67
1:B:567:ASP:O	5:B:2464:HOH:O	2.15	0.65
1:A:487:PHE:CD1	1:B:32[A]:ASP:OD2	2.51	0.63
1:B:144:VAL:HG12	5:B:2158:HOH:O	1.98	0.63
1:A:472:ASN:ND2	1:A:500:THR:HG21	2.06	0.60
1:A:500:THR:HG23	5:A:2355:HOH:O	2.00	0.60
1:A:26[A]:MET:SD	1:A:74[A]:SER:HB3	2.42	0.60
1:A:311:GLU:HG2	5:A:2276:HOH:O	2.01	0.59

Continued on next page...

Continued from previous page...

Atom-1	Atom-2	Interatomic distance (Å)	Clash overlap (Å)
1:A:500:THR:HG22	1:A:501:SER:O	2.03	0.57
1:A:258:LEU:HD11	1:A:353:LEU:HD13	1.85	0.57
1:A:30:LEU:O	1:A:34:ILE:HG12	2.04	0.57
1:B:258[A]:LEU:HD11	1:B:353:LEU:HD13	1.86	0.56
1:A:491:ASN:HD22	1:A:491:ASN:C	2.09	0.56
1:B:565:ARG:CZ	1:B:566:HIS:HB3	2.36	0.55
1:A:42:LEU:HD11	1:A:71:LEU:HD13	1.88	0.55
1:B:504:LYS:HD2	1:B:516:THR:OG1	2.08	0.54
1:A:128:THR:HG23	5:A:2153:HOH:O	2.07	0.54
1:A:480:ARG:HG2	1:A:480:ARG:HH11	1.72	0.53
1:A:8:ALA:HB2	1:A:34:ILE:HD13	1.91	0.52
1:A:288:VAL:HG12	5:A:2255:HOH:O	2.08	0.52
1:A:467:LEU:HD11	1:A:539:LEU:HG	1.92	0.52
1:B:287:ASP:HA	1:B:317[B]:ARG:CZ	2.41	0.51
1:A:42:LEU:HD11	1:A:71:LEU:CD1	2.39	0.51
1:B:467:LEU:HD11	1:B:539:LEU:HG	1.91	0.51
1:A:500:THR:HG22	1:A:501:SER:N	2.26	0.51
1:A:494:THR:HG22	1:B:23:ILE:HG21	1.92	0.51
1:A:480:ARG:O	1:A:484:GLU:HG3	2.11	0.50
1:B:133:TYR:CE1	1:B:149:LYS:HE2	2.46	0.49
1:B:356:LYS:NZ	5:B:2334:HOH:O	2.19	0.49
1:A:554:GLU:HA	1:A:554:GLU:OE1	2.13	0.49
1:A:406[A]:ARG:HG3	1:A:406[A]:ARG:HH11	1.78	0.49
1:A:490[A]:ARG:NH1	1:B:32[A]:ASP:OD2	2.47	0.48
1:A:139[A]:SER:OG	1:A:142:GLU:HG3	2.13	0.48
1:A:23:ILE:HG21	1:B:494:THR:HG22	1.97	0.47
1:A:211:LYS:HD2	1:A:345:ASP:OD2	2.15	0.47
1:B:382:LEU:HD22	1:B:527:LEU:HD23	1.97	0.46
1:B:172:ARG:NH1	5:B:2082:HOH:O	2.40	0.46
1:A:397:ASN:HA	1:A:400:TRP:CE3	2.50	0.46
1:A:137:ILE:HG22	1:A:170:ILE:HD13	1.97	0.46
1:A:378:GLN:HG3	1:A:520:MET:SD	2.56	0.46
1:B:137:ILE:HG22	1:B:170:ILE:HD13	1.96	0.45
1:B:397:ASN:HA	1:B:400:TRP:CE3	2.51	0.45
1:A:557:ARG:HB3	1:A:561:GLN:HG3	1.98	0.45
1:B:478:MET:O	1:B:482:PHE:HD2	1.99	0.45
1:B:564:PRO:HB2	1:B:568:GLY:HA3	1.99	0.44
1:A:205:ASN:HA	1:A:208:GLN:HG2	1.99	0.44
1:A:118:PHE:CE2	1:A:119:GLN:HG3	2.53	0.44
1:B:204:ILE:HG12	1:B:335:PHE:CE1	2.53	0.44
1:B:118:PHE:CE2	1:B:119:GLN:HG3	2.52	0.44

Continued on next page...

Continued from previous page...

Atom-1	Atom-2	Interatomic distance (Å)	Clash overlap (Å)
1:B:1:MET:N	5:B:2001:HOH:O	2.50	0.44
1:A:343:ASN:HB3	1:A:346:TRP:CE2	2.53	0.44
1:B:384:GLU:O	5:B:2369:HOH:O	2.21	0.43
1:A:380:ASN:O	1:A:384:GLU:HG2	2.18	0.43
1:A:204:ILE:HG12	1:A:335:PHE:CE1	2.54	0.42
1:B:566:HIS:O	1:B:567:ASP:HB3	2.19	0.42
1:A:8:ALA:CB	1:A:34:ILE:HD13	2.50	0.42
1:A:378:GLN:HG2	5:A:2329:HOH:O	2.20	0.42
1:A:294:GLN:HB3	1:A:294:GLN:HE21	1.73	0.41
1:B:566:HIS:O	1:B:567:ASP:CB	2.68	0.41
1:B:180:LEU:C	1:B:180:LEU:HD23	2.40	0.41
1:B:565:ARG:HG3	1:B:565:ARG:O	2.18	0.41
1:A:487:PHE:O	1:A:490[B]:ARG:CZ	2.69	0.41
1:A:208:GLN:OE1	1:A:341:PRO:HD2	2.20	0.41
1:A:82:ILE:HD13	5:A:2147:HOH:O	2.20	0.41
1:A:308:ASP:O	1:A:325:GLN:HA	2.21	0.41
1:A:289:ARG:NH1	5:A:2239:HOH:O	2.27	0.40
1:A:480:ARG:NH2	1:A:491:ASN:OD1	2.55	0.40
1:B:566:HIS:O	1:B:566:HIS:CG	2.74	0.40

There are no symmetry-related clashes.

5.3 Torsion angles [i](#)

5.3.1 Protein backbone [i](#)

In the following table, the Percentiles column shows the percent Ramachandran outliers of the chain as a percentile score with respect to all X-ray entries followed by that with respect to entries of similar resolution.

The Analysed column shows the number of residues for which the backbone conformation was analysed, and the total number of residues.

Mol	Chain	Analysed	Favoured	Allowed	Outliers	Percentiles	
1	A	579/588 (98%)	569 (98%)	10 (2%)	0	100	100
1	B	563/588 (96%)	553 (98%)	10 (2%)	0	100	100
All	All	1142/1176 (97%)	1122 (98%)	20 (2%)	0	100	100

There are no Ramachandran outliers to report.

5.3.2 Protein sidechains ⓘ

In the following table, the Percentiles column shows the percent sidechain outliers of the chain as a percentile score with respect to all X-ray entries followed by that with respect to entries of similar resolution.

The Analysed column shows the number of residues for which the sidechain conformation was analysed, and the total number of residues.

Mol	Chain	Analysed	Rotameric	Outliers	Percentiles	
1	A	488/489 (100%)	478 (98%)	10 (2%)	63	31
1	B	474/489 (97%)	470 (99%)	4 (1%)	86	71
All	All	962/978 (98%)	948 (98%)	14 (2%)	80	44

All (14) residues with a non-rotameric sidechain are listed below:

Mol	Chain	Res	Type
1	A	32	ASP
1	A	294	GLN
1	A	323[A]	SER
1	A	323[B]	SER
1	A	406[A]	ARG
1	A	406[B]	ARG
1	A	491	ASN
1	A	555[A]	TYR
1	A	555[B]	TYR
1	A	565	ARG
1	B	139[A]	SER
1	B	139[B]	SER
1	B	458	ILE
1	B	565	ARG

Some sidechains can be flipped to improve hydrogen bonding and reduce clashes. All (2) such sidechains are listed below:

Mol	Chain	Res	Type
1	A	294	GLN
1	B	115	GLN

5.3.3 RNA ⓘ

There are no RNA molecules in this entry.

5.4 Non-standard residues in protein, DNA, RNA chains ⓘ

There are no non-standard protein/DNA/RNA residues in this entry.

5.5 Carbohydrates ⓘ

There are no carbohydrates in this entry.

5.6 Ligand geometry ⓘ

Of 6 ligands modelled in this entry, 2 are monoatomic - leaving 4 for Mogul analysis.

In the following table, the Counts columns list the number of bonds (or angles) for which Mogul statistics could be retrieved, the number of bonds (or angles) that are observed in the model and the number of bonds (or angles) that are defined in the chemical component dictionary. The Link column lists molecule types, if any, to which the group is linked. The Z score for a bond length (or angle) is the number of standard deviations the observed value is removed from the expected value. A bond length (or angle) with $|Z| > 2$ is considered an outlier worth inspection. RMSZ is the root-mean-square of all Z scores of the bond lengths (or angles).

Mol	Type	Chain	Res	Link	Bond lengths			Bond angles		
					Counts	RMSZ	$\# Z > 2$	Counts	RMSZ	$\# Z > 2$
2	TPP	A	700	4	20,27,27	0.50	0	27,40,40	0.93	0
3	FAD	A	701	-	52,58,58	1.00	4 (7%)	52,89,89	2.35	6 (11%)
2	TPP	B	700	4	20,27,27	0.89	1 (5%)	27,40,40	0.91	1 (3%)
3	FAD	B	701	-	52,58,58	1.08	4 (7%)	52,89,89	2.37	6 (11%)

In the following table, the Chirals column lists the number of chiral outliers, the number of chiral centers analysed, the number of these observed in the model and the number defined in the chemical component dictionary. Similar counts are reported in the Torsion and Rings columns. '-' means no outliers of that kind were identified.

Mol	Type	Chain	Res	Link	Chirals	Torsions	Rings
2	TPP	A	700	4	-	0/16/17/17	0/2/2/2
3	FAD	A	701	-	-	0/30/50/50	0/6/6/6
2	TPP	B	700	4	-	0/16/17/17	0/2/2/2
3	FAD	B	701	-	-	0/30/50/50	0/6/6/6

All (9) bond length outliers are listed below:

Mol	Chain	Res	Type	Atoms	Z	Observed(Å)	Ideal(Å)
2	B	700	TPP	PB-O3B	-3.18	1.43	1.54
3	A	701	FAD	C9A-N10	2.38	1.42	1.38

Continued on next page...

Continued from previous page...

Mol	Chain	Res	Type	Atoms	Z	Observed(Å)	Ideal(Å)
3	A	701	FAD	C4-C4X	2.44	1.46	1.41
3	B	701	FAD	C4-C4X	2.74	1.46	1.41
3	A	701	FAD	C5X-N5	2.83	1.39	1.35
3	B	701	FAD	C9A-N10	2.93	1.43	1.38
3	B	701	FAD	C4-N3	3.37	1.39	1.33
3	B	701	FAD	C5X-N5	3.38	1.40	1.35
3	A	701	FAD	C4-N3	3.38	1.39	1.33

All (13) bond angle outliers are listed below:

Mol	Chain	Res	Type	Atoms	Z	Observed(°)	Ideal(°)
3	B	701	FAD	C4X-C4-N3	-7.04	114.32	123.52
3	A	701	FAD	C4X-C4-N3	-6.53	114.98	123.52
3	A	701	FAD	N3-C2-N1	-5.39	118.62	127.69
3	A	701	FAD	C4X-C10-N10	-4.81	117.03	120.52
3	B	701	FAD	N3-C2-N1	-4.76	119.67	127.69
3	A	701	FAD	C4-C4X-C10	-4.23	117.23	119.94
3	B	701	FAD	C4-C4X-C10	-3.83	117.49	119.94
3	B	701	FAD	C4X-C10-N10	-3.67	117.86	120.52
3	A	701	FAD	C1'-N10-C9A	2.07	121.23	118.83
2	B	700	TPP	C5'-C7'-N3	2.14	117.12	113.37
3	B	701	FAD	C1'-N10-C9A	3.31	122.67	118.83
3	A	701	FAD	C4-N3-C2	12.50	125.59	115.16
3	B	701	FAD	C4-N3-C2	12.77	125.81	115.16

There are no chirality outliers.

There are no torsion outliers.

There are no ring outliers.

No monomer is involved in short contacts.

5.7 Other polymers [i](#)

There are no such residues in this entry.

5.8 Polymer linkage issues [i](#)

There are no chain breaks in this entry.

6 Fit of model and data

6.1 Protein, DNA and RNA chains

In the following table, the column labelled ‘#RSRZ> 2’ contains the number (and percentage) of RSRZ outliers, followed by percent RSRZ outliers for the chain as percentile scores relative to all X-ray entries and entries of similar resolution. The OWAB column contains the minimum, median, 95th percentile and maximum values of the occupancy-weighted average B-factor per residue. The column labelled ‘Q< 0.9’ lists the number of (and percentage) of residues with an average occupancy less than 0.9.

Mol	Chain	Analysed	<RSRZ>	#RSRZ>2		OWAB(Å ²)	Q<0.9
1	A	555/588 (94%)	-0.28	19 (3%)	49 51	8, 16, 32, 56	0
1	B	546/588 (92%)	-0.33	15 (2%)	58 62	9, 15, 27, 49	0
All	All	1101/1176 (93%)	-0.31	34 (3%)	52 56	8, 16, 29, 56	0

All (34) RSRZ outliers are listed below:

Mol	Chain	Res	Type	RSRZ
1	A	179	LEU	6.5
1	B	496	TRP	6.3
1	A	486	TYR	5.3
1	B	179	LEU	4.6
1	A	482	PHE	4.6
1	A	481	GLY	4.5
1	A	496	TRP	4.4
1	B	482	PHE	4.3
1	B	492	SER	4.2
1	B	178	ALA	4.1
1	A	487	PHE	3.9
1	A	182	ASN	3.8
1	A	485	MET	3.6
1	A	555[A]	TYR	3.6
1	A	492	SER	3.2
1	A	497	ASN	3.1
1	A	493	SER	3.1
1	B	495	TYR	3.0
1	A	495	TYR	2.9
1	A	342	VAL	2.9
1	B	195	ILE	2.8
1	A	494	THR	2.8
1	B	497	ASN	2.8
1	A	178	ALA	2.7

Continued on next page...

Continued from previous page...

Mol	Chain	Res	Type	RSRZ
1	B	567	ASP	2.7
1	A	484	GLU	2.6
1	B	481	GLY	2.5
1	B	498	GLY	2.5
1	B	566	HIS	2.5
1	A	498	GLY	2.4
1	B	494	THR	2.4
1	A	477	GLY	2.4
1	B	479	VAL	2.3
1	B	555	TYR	2.2

6.2 Non-standard residues in protein, DNA, RNA chains [i](#)

There are no non-standard protein/DNA/RNA residues in this entry.

6.3 Carbohydrates [i](#)

There are no carbohydrates in this entry.

6.4 Ligands [i](#)

In the following table, the Atoms column lists the number of modelled atoms in the group and the number defined in the chemical component dictionary. LLDF column lists the quality of electron density of the group with respect to its neighbouring residues in protein, DNA or RNA chains. The B-factors column lists the minimum, median, 95th percentile and maximum values of B factors of atoms in the group. The column labelled 'Q< 0.9' lists the number of atoms with occupancy less than 0.9.

Mol	Type	Chain	Res	Atoms	RSCC	RSR	LLDF	B-factors(Å ²)	Q<0.9
2	TPP	B	700	26/26	0.98	0.07	0.05	10,11,13,15	0
3	FAD	B	701	53/53	0.98	0.06	-0.22	10,11,12,13	0
3	FAD	A	701	53/53	0.98	0.06	-0.32	9,11,11,12	0
2	TPP	A	700	26/26	0.98	0.06	-0.60	10,12,14,16	0
4	MG	A	702	1/1	1.00	0.04	-1.03	12,12,12,12	0
4	MG	B	702	1/1	1.00	0.02	-2.37	12,12,12,12	0

6.5 Other polymers [i](#)

There are no such residues in this entry.