



Full wwPDB X-ray Structure Validation Report ⓘ

Jan 31, 2016 – 06:22 PM GMT

PDB ID : 1AI8
Title : HUMAN ALPHA-THROMBIN TERNARY COMPLEX WITH THE EXOSITE INHIBITOR HIRUGEN AND ACTIVE SITE INHIBITOR PHCH 2OCO-D-DPA-PRO-BOROMPG
Authors : Skordalakes, E.; Dodson, G.; Elgendy, S.; Goodwin, C.A.; Green, D.; Tyrrel, R.; Scully, M.F.; Freyssinet, J.; Kakkar, V.V.; Deadman, J.
Deposited on : 1997-05-01
Resolution : 1.85 Å(reported)

This is a Full wwPDB X-ray Structure Validation Report for a publicly released PDB entry.
We welcome your comments at validation@mail.wwpdb.org
A user guide is available at
<http://wwpdb.org/validation/2016/XrayValidationReportHelp>
with specific help available everywhere you see the ⓘ symbol.

The following versions of software and data (see [references ⓘ](#)) were used in the production of this report:

MolProbity : 4.02b-467
Mogul : 1.7 (RC4), CSD as536be (2015)
Xtriage (Phenix) : **NOT EXECUTED**
EDS : **NOT EXECUTED**
Percentile statistics : 20151230.v01 (using entries in the PDB archive December 30th 2015)
Ideal geometry (proteins) : Engh & Huber (2001)
Ideal geometry (DNA, RNA) : Parkinson et al. (1996)
Validation Pipeline (wwPDB-VP) : trunk26865

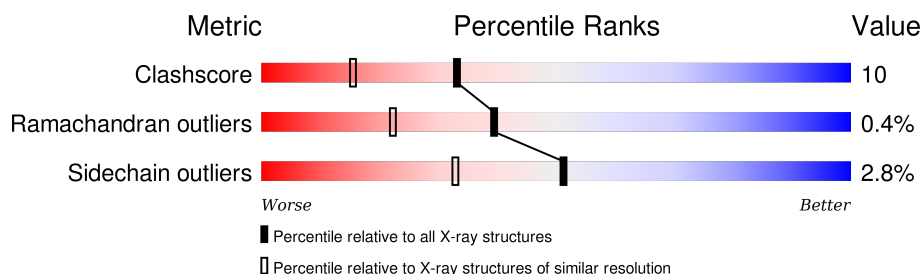
1 Overall quality at a glance

The following experimental techniques were used to determine the structure:

X-RAY DIFFRACTION

The reported resolution of this entry is 1.85 Å.

Percentile scores (ranging between 0-100) for global validation metrics of the entry are shown in the following graphic. The table shows the number of entries on which the scores are based.



Metric	Whole archive (#Entries)	Similar resolution (#Entries, resolution range(Å))
Clashscore	102246	1898 (1.86-1.86)
Ramachandran outliers	100387	1875 (1.86-1.86)
Sidechain outliers	100360	1875 (1.86-1.86)

The table below summarises the geometric issues observed across the polymeric chains and their fit to the electron density. The red, orange, yellow and green segments on the lower bar indicate the fraction of residues that contain outliers for ≥ 3 , 2, 1 and 0 types of geometric quality criteria. A grey segment represents the fraction of residues that are not modelled. The numeric value for each fraction is indicated below the corresponding segment, with a dot representing fractions $\leq 5\%$. The upper red bar (where present) indicates the fraction of residues that have poor fit to the electron density. The numeric value is given above the bar.

Note EDS was not executed.

Mol	Chain	Length	Quality of chain
1	L	36	
2	H	259	
3	I	12	

2 Entry composition

There are 5 unique types of molecules in this entry. The entry contains 2671 atoms, of which 0 are hydrogens and 0 are deuteriums.

In the tables below, the ZeroOcc column contains the number of atoms modelled with zero occupancy, the AltConf column contains the number of residues with at least one atom in alternate conformation and the Trace column contains the number of residues modelled with at most 2 atoms.

- Molecule 1 is a protein called ALPHA-THROMBIN (SMALL SUBUNIT).

Mol	Chain	Residues	Atoms					ZeroOcc	AltConf	Trace
1	L	27	Total	C	N	O	S	0	0	0
			222	140	36	45	1			

- Molecule 2 is a protein called ALPHA-THROMBIN (LARGE SUBUNIT).

Mol	Chain	Residues	Atoms					ZeroOcc	AltConf	Trace
2	H	251	Total	C	N	O	S	0	0	0
			2017	1288	355	360	14			

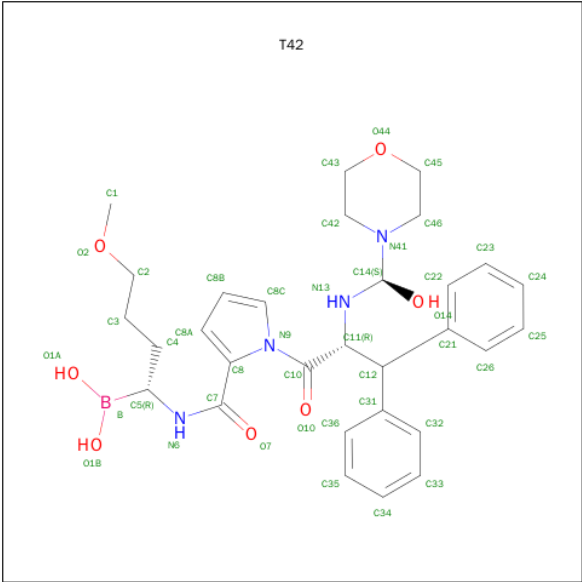
- Molecule 3 is a protein called HIRUDIN IIIB.

Mol	Chain	Residues	Atoms					ZeroOcc	AltConf	Trace
3	I	10	Total	C	N	O	S	0	0	0
			89	56	10	22	1			

There is a discrepancy between the modelled and reference sequences:

Chain	Residue	Modelled	Actual	Comment	Reference
I	54	GLU	GLY	CONFLICT	UNP P28501

- Molecule 4 is MORPHOLINO-DIPHENYLALANINE-METHOXYPROPYLBORONIC ACID (three-letter code: T42) (formula: C₃₀H₃₉BN₄O₇).



Mol	Chain	Residues	Atoms					ZeroOcc	AltConf
4	H	1	Total	B	C	N	O	0	0
			42	1	30	4	7		

- Molecule 5 is water.

Mol	Chain	Residues	Atoms		ZeroOcc	AltConf
5	H	253	Total	O	0	0
			253	253		
5	I	9	Total	O	0	0
			9	9		
5	L	39	Total	O	0	0
			39	39		

3 Residue-property plots

These plots are drawn for all protein, RNA and DNA chains in the entry. The first graphic for a chain summarises the proportions of errors displayed in the second graphic. The second graphic shows the sequence view annotated by issues in geometry and electron density. Residues are color-coded according to the number of geometric quality criteria for which they contain at least one outlier: green = 0, yellow = 1, orange = 2 and red = 3 or more. A red dot above a residue indicates a poor fit to the electron density ($RSRZ > 2$). Stretches of 2 or more consecutive residues without any outlier are shown as a green connector. Residues present in the sample, but not in the model, are shown in grey.

Note EDS was not executed.

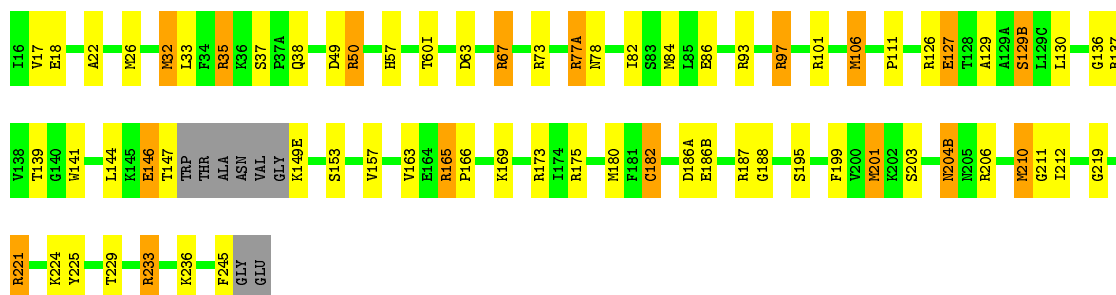
• Molecule 1: ALPHA-THROMBIN (SMALL SUBUNIT)

Chain L: 



• Molecule 2: ALPHA-THROMBIN (LARGE SUBUNIT)

Chain H: 



• Molecule 3: HIRUDIN IIIB

Chain I: 



4 Data and refinement statistics

Xtriage (Phenix) and EDS were not executed - this section will therefore be incomplete.

Property	Value	Source
Space group	C 1 2 1	Depositor
Cell constants a, b, c, α , β , γ	69.71 Å 71.46 Å 71.65 Å 90.00° 99.82° 90.00°	Depositor
Resolution (Å)	20.00 – 1.85	Depositor
% Data completeness (in resolution range)	96.1 (20.00-1.85)	Depositor
R_{merge}	0.06	Depositor
R_{sym}	0.05	Depositor
Refinement program	REFMAC	Depositor
R, R_{free}	0.170 , 0.240	Depositor
Estimated twinning fraction	No twinning to report.	Xtriage
Total number of atoms	2671	wwPDB-VP
Average B, all atoms (Å ²)	30.0	wwPDB-VP

5 Model quality i

5.1 Standard geometry i

Bond lengths and bond angles in the following residue types are not validated in this section: T42, TYS

The Z score for a bond length (or angle) is the number of standard deviations the observed value is removed from the expected value. A bond length (or angle) with $|Z| > 5$ is considered an outlier worth inspection. RMSZ is the root-mean-square of all Z scores of the bond lengths (or angles).

Mol	Chain	Bond lengths		Bond angles	
		RMSZ	$\# Z > 5$	RMSZ	$\# Z > 5$
1	L	1.31	1/224 (0.4%)	2.06	8/298 (2.7%)
2	H	0.98	1/2069 (0.0%)	1.32	28/2796 (1.0%)
3	I	0.65	0/73	1.57	0/96
All	All	1.01	2/2366 (0.1%)	1.41	36/3190 (1.1%)

Chiral center outliers are detected by calculating the chiral volume of a chiral center and verifying if the center is modelled as a planar moiety or with the opposite hand. A planarity outlier is detected by checking planarity of atoms in a peptide group, atoms in a mainchain group or atoms of a sidechain that are expected to be planar.

Mol	Chain	#Chirality outliers	#Planarity outliers
1	L	0	2
2	H	0	1
3	I	0	1
All	All	0	4

All (2) bond length outliers are listed below:

Mol	Chain	Res	Type	Atoms	Z	Observed(Å)	Ideal(Å)
1	L	4	ARG	CZ-NH1	6.03	1.40	1.33
2	H	153	SER	CA-CB	5.91	1.61	1.52

All (36) bond angle outliers are listed below:

Mol	Chain	Res	Type	Atoms	Z	Observed(°)	Ideal(°)
1	L	4	ARG	NE-CZ-NH2	9.96	125.28	120.30
1	L	1(B)	ALA	N-CA-CB	-8.08	98.78	110.10
2	H	187	ARG	NE-CZ-NH2	7.53	124.07	120.30
1	L	14	ASP	CB-CG-OD2	-7.45	111.59	118.30
2	H	50	ARG	NE-CZ-NH2	7.43	124.02	120.30

Continued on next page...

Continued from previous page...

Mol	Chain	Res	Type	Atoms	Z	Observed(°)	Ideal(°)
2	H	77(A)	ARG	NE-CZ-NH2	7.33	123.97	120.30
2	H	67	ARG	NE-CZ-NH2	7.25	123.92	120.30
2	H	137	ARG	NE-CZ-NH2	7.20	123.90	120.30
2	H	146	GLU	C-N-CA	-7.19	103.73	121.70
2	H	97	ARG	NE-CZ-NH2	7.05	123.82	120.30
2	H	221	ARG	NE-CZ-NH2	7.00	123.80	120.30
2	H	93	ARG	NE-CZ-NH2	6.92	123.76	120.30
2	H	35	ARG	NE-CZ-NH2	6.84	123.72	120.30
2	H	173	ARG	NE-CZ-NH2	6.80	123.70	120.30
2	H	126	ARG	NE-CZ-NH2	6.78	123.69	120.30
2	H	175	ARG	NE-CZ-NH2	6.70	123.65	120.30
2	H	206	ARG	NE-CZ-NH2	6.64	123.62	120.30
1	L	1(A)	ASP	CB-CG-OD2	-6.46	112.49	118.30
2	H	73	ARG	NE-CZ-NH2	6.42	123.51	120.30
2	H	233	ARG	NE-CZ-NH2	6.26	123.43	120.30
2	H	101	ARG	NE-CZ-NH2	6.20	123.40	120.30
2	H	26	MET	CG-SD-CE	6.12	109.99	100.20
2	H	32	MET	CG-SD-CE	6.09	109.95	100.20
2	H	210	MET	CG-SD-CE	6.09	109.94	100.20
2	H	165	ARG	NE-CZ-NH2	6.08	123.34	120.30
2	H	245	PHE	CA-C-O	-5.84	107.84	120.10
2	H	106	MET	CG-SD-CE	5.79	109.46	100.20
2	H	84	MET	CG-SD-CE	5.72	109.35	100.20
2	H	180	MET	CG-SD-CE	5.71	109.34	100.20
2	H	201	MET	CG-SD-CE	5.63	109.21	100.20
1	L	5	PRO	O-C-N	-5.63	113.70	122.70
1	L	1(A)	ASP	N-CA-CB	-5.45	100.79	110.60
1	L	1(B)	ALA	CA-C-O	5.35	131.33	120.10
2	H	101	ARG	N-CA-CB	5.13	119.83	110.60
2	H	146	GLU	O-C-N	-5.09	114.56	122.70
1	L	4	ARG	NE-CZ-NH1	-5.00	117.80	120.30

There are no chirality outliers.

All (4) planarity outliers are listed below:

Mol	Chain	Res	Type	Group
2	H	224	LYS	Mainchain
3	I	61	GLU	Peptide
1	L	1(B)	ALA	Mainchain
1	L	9	LYS	Mainchain

5.2 Too-close contacts ⓘ

In the following table, the Non-H and H(model) columns list the number of non-hydrogen atoms and hydrogen atoms in the chain respectively. The H(added) column lists the number of hydrogen atoms added and optimized by MolProbity. The Clashes column lists the number of clashes within the asymmetric unit, whereas Symm-Clashes lists symmetry related clashes.

Mol	Chain	Non-H	H(model)	H(added)	Clashes	Symm-Clashes
1	L	222	0	225	1	0
2	H	2017	0	1979	40	0
3	I	89	0	69	3	0
4	H	42	0	39	8	0
5	H	253	0	0	7	3
5	I	9	0	0	1	0
5	L	39	0	0	0	1
All	All	2671	0	2312	48	3

The all-atom clashscore is defined as the number of clashes found per 1000 atoms (including hydrogen atoms). The all-atom clashscore for this structure is 10.

All (48) close contacts within the same asymmetric unit are listed below, sorted by their clash magnitude.

Atom-1	Atom-2	Interatomic distance (Å)	Clash overlap (Å)
4:H:2:T42:C32	4:H:2:T42:H14	2.05	0.87
3:I:62:GLU:HB3	5:I:250:HOH:O	1.88	0.73
2:H:77(A):ARG:O	5:H:254:HOH:O	2.07	0.72
2:H:219:GLY:O	5:H:252:HOH:O	2.08	0.71
2:H:195:SER:OG	4:H:2:T42:C5	2.43	0.66
2:H:139:THR:HG22	2:H:157:VAL:HG22	1.77	0.65
2:H:169:LYS:HG2	5:H:363:HOH:O	1.99	0.63
4:H:2:T42:H432	4:H:2:T42:C33	2.31	0.61
2:H:127:GLU:O	2:H:129(B):SER:OG	2.21	0.58
2:H:60(I):THR:HG22	2:H:63:ASP:OD2	2.03	0.58
2:H:146:GLU:O	2:H:147:THR:C	2.40	0.56
4:H:2:T42:C32	4:H:2:T42:C14	2.82	0.56
2:H:97:ARG:NH1	5:H:474:HOH:O	2.34	0.56
2:H:57:HIS:CD2	4:H:2:T42:HA8	2.40	0.56
2:H:33:LEU:HD11	2:H:106:MET:HE1	1.89	0.54
4:H:2:T42:H32	4:H:2:T42:H14	1.84	0.54
2:H:201:MET:SD	2:H:210:MET:HG3	2.48	0.54
3:I:62:GLU:H	3:I:64:LEU:H	1.57	0.53
2:H:50:ARG:NH2	2:H:86:GLU:OE1	2.43	0.51
2:H:35:ARG:O	2:H:38:GLN:HA	2.11	0.51

Continued on next page...

Continued from previous page...

Atom-1	Atom-2	Interatomic distance (Å)	Clash overlap (Å)
2:H:144:LEU:HB2	2:H:149(E):LYS:O	2.11	0.51
2:H:22:ALA:HB2	2:H:157:VAL:HG23	1.93	0.51
2:H:33:LEU:HD21	2:H:106:MET:CE	2.42	0.49
2:H:236:LYS:HB2	5:H:349:HOH:O	2.11	0.49
2:H:163:VAL:HB	2:H:182:CYS:SG	2.53	0.49
2:H:77(A):ARG:O	2:H:78:ASN:HB2	2.12	0.48
2:H:211:GLY:HA2	2:H:229:THR:O	2.12	0.48
3:I:60:PRO:HB3	3:I:62:GLU:OE1	2.15	0.46
2:H:221:ARG:O	5:H:266:HOH:O	2.20	0.46
2:H:129:ALA:O	2:H:130:LEU:HB2	2.16	0.46
2:H:186(A):ASP:OD1	2:H:186(B):GLU:HG3	2.16	0.46
2:H:165:ARG:HB3	2:H:166:PRO:HD3	1.98	0.46
1:L:1(B):ALA:N	1:L:1:CYS:H	2.13	0.46
2:H:203:SER:HB3	2:H:204(B):ASN:ND2	2.32	0.45
2:H:195:SER:OG	4:H:2:T42:O1B	2.35	0.45
2:H:136:GLY:HA3	2:H:199:PHE:CZ	2.52	0.45
2:H:163:VAL:HG21	2:H:225:TYR:CD1	2.52	0.45
2:H:17:VAL:O	2:H:188:GLY:HA2	2.18	0.44
2:H:33:LEU:HD21	2:H:106:MET:HE3	1.99	0.44
2:H:204(B):ASN:C	2:H:204(B):ASN:HD22	2.22	0.43
2:H:17:VAL:O	2:H:18:GLU:HB2	2.19	0.43
2:H:97:ARG:NH2	5:H:432:HOH:O	2.52	0.43
2:H:212:ILE:HB	2:H:229:THR:HB	2.01	0.43
2:H:32:MET:HB2	2:H:141:TRP:CZ3	2.54	0.43
2:H:195:SER:OG	4:H:2:T42:O1A	2.38	0.42
2:H:49:ASP:O	2:H:111:PRO:HA	2.20	0.41
2:H:17:VAL:HG12	2:H:18:GLU:HG2	2.02	0.40
2:H:67:ARG:HG2	2:H:82:ILE:HG12	2.03	0.40

All (3) symmetry-related close contacts are listed below. The label for Atom-2 includes the symmetry operator and encoded unit-cell translations to be applied.

Atom-1	Atom-2	Interatomic distance (Å)	Clash overlap (Å)
5:H:254:HOH:O	5:H:254:HOH:O[2_656]	1.49	0.71
5:H:345:HOH:O	5:H:345:HOH:O[2_656]	2.04	0.16
5:L:44:HOH:O	5:H:351:HOH:O[4_555]	2.15	0.05

5.3 Torsion angles [i](#)

5.3.1 Protein backbone [i](#)

In the following table, the Percentiles column shows the percent Ramachandran outliers of the chain as a percentile score with respect to all X-ray entries followed by that with respect to entries of similar resolution.

The Analysed column shows the number of residues for which the backbone conformation was analysed, and the total number of residues.

Mol	Chain	Analysed	Favoured	Allowed	Outliers	Percentiles	
1	L	25/36 (69%)	24 (96%)	1 (4%)	0	100	100
2	H	247/259 (95%)	238 (96%)	9 (4%)	0	100	100
3	I	7/12 (58%)	5 (71%)	1 (14%)	1 (14%)	0	0
All	All	279/307 (91%)	267 (96%)	11 (4%)	1 (0%)	39	22

All (1) Ramachandran outliers are listed below:

Mol	Chain	Res	Type
3	I	62	GLU

5.3.2 Protein sidechains [i](#)

In the following table, the Percentiles column shows the percent sidechain outliers of the chain as a percentile score with respect to all X-ray entries followed by that with respect to entries of similar resolution.

The Analysed column shows the number of residues for which the sidechain conformation was analysed, and the total number of residues.

Mol	Chain	Analysed	Rotameric	Outliers	Percentiles	
1	L	25/31 (81%)	24 (96%)	1 (4%)	38	18
2	H	216/225 (96%)	210 (97%)	6 (3%)	51	33
3	I	8/11 (73%)	8 (100%)	0	100	100
All	All	249/267 (93%)	242 (97%)	7 (3%)	51	33

All (7) residues with a non-rotameric sidechain are listed below:

Mol	Chain	Res	Type
1	L	14(D)	ARG
2	H	37	SER

Continued on next page...

Continued from previous page...

Mol	Chain	Res	Type
2	H	127	GLU
2	H	129(B)	SER
2	H	182	CYS
2	H	204(B)	ASN
2	H	233	ARG

Some sidechains can be flipped to improve hydrogen bonding and reduce clashes. All (4) such sidechains are listed below:

Mol	Chain	Res	Type
2	H	78	ASN
2	H	156	GLN
2	H	204(B)	ASN
2	H	244	GLN

5.3.3 RNA ⓘ

There are no RNA molecules in this entry.

5.4 Non-standard residues in protein, DNA, RNA chains ⓘ

1 non-standard protein/DNA/RNA residue is modelled in this entry.

In the following table, the Counts columns list the number of bonds (or angles) for which Mogul statistics could be retrieved, the number of bonds (or angles) that are observed in the model and the number of bonds (or angles) that are defined in the chemical component dictionary. The Link column lists molecule types, if any, to which the group is linked. The Z score for a bond length (or angle) is the number of standard deviations the observed value is removed from the expected value. A bond length (or angle) with $|Z| > 2$ is considered an outlier worth inspection. RMSZ is the root-mean-square of all Z scores of the bond lengths (or angles).

Mol	Type	Chain	Res	Link	Bond lengths			Bond angles		
					Counts	RMSZ	# $ Z > 2$	Counts	RMSZ	# $ Z > 2$
3	TYS	I	63	3	15,16,17	2.93	2 (13%)	16,22,24	2.42	8 (50%)

In the following table, the Chirals column lists the number of chiral outliers, the number of chiral centers analysed, the number of these observed in the model and the number defined in the chemical component dictionary. Similar counts are reported in the Torsion and Rings columns. '-' means no outliers of that kind were identified.

Mol	Type	Chain	Res	Link	Chirals	Torsions	Rings
3	TYS	I	63	3	-	0/9/11/13	0/1/1/1

All (2) bond length outliers are listed below:

Mol	Chain	Res	Type	Atoms	Z	Observed(Å)	Ideal(Å)
3	I	63	TYS	OH-CZ	-2.60	1.38	1.42
3	I	63	TYS	OH-S	10.80	1.84	1.63

All (8) bond angle outliers are listed below:

Mol	Chain	Res	Type	Atoms	Z	Observed(°)	Ideal(°)
3	I	63	TYS	CG-CB-CA	-3.55	106.18	114.21
3	I	63	TYS	CD1-CE1-CZ	-3.38	115.48	119.74
3	I	63	TYS	CE2-CD2-CG	-2.82	117.17	121.04
3	I	63	TYS	O-C-CA	-2.81	118.16	125.49
3	I	63	TYS	O3-S-O1	2.09	116.42	108.56
3	I	63	TYS	O2-S-O1	3.33	126.96	112.46
3	I	63	TYS	CD2-CG-CD1	3.55	123.82	118.13
3	I	63	TYS	CE2-CZ-CE1	3.75	126.30	120.20

There are no chirality outliers.

There are no torsion outliers.

There are no ring outliers.

No monomer is involved in short contacts.

5.5 Carbohydrates [i](#)

There are no carbohydrates in this entry.

5.6 Ligand geometry [i](#)

1 ligand is modelled in this entry.

In the following table, the Counts columns list the number of bonds (or angles) for which Mogul statistics could be retrieved, the number of bonds (or angles) that are observed in the model and the number of bonds (or angles) that are defined in the chemical component dictionary. The Link column lists molecule types, if any, to which the group is linked. The Z score for a bond length (or angle) is the number of standard deviations the observed value is removed from the expected value. A bond length (or angle) with $|Z| > 2$ is considered an outlier worth inspection. RMSZ is the root-mean-square of all Z scores of the bond lengths (or angles).

Mol	Type	Chain	Res	Link	Bond lengths			Bond angles		
					Counts	RMSZ	$\# Z > 2$	Counts	RMSZ	$\# Z > 2$
4	T42	H	2	2	39,45,45	4.92	18 (46%)	38,60,60	3.50	18 (47%)

In the following table, the Chirals column lists the number of chiral outliers, the number of chiral centers analysed, the number of these observed in the model and the number defined in the chemical component dictionary. Similar counts are reported in the Torsion and Rings columns. '-' means no outliers of that kind were identified.

Mol	Type	Chain	Res	Link	Chirals	Torsions	Rings
4	T42	H	2	2	-	0/26/53/53	0/4/4/4

All (18) bond length outliers are listed below:

Mol	Chain	Res	Type	Atoms	Z	Observed(Å)	Ideal(Å)
4	H	2	T42	C35-C34	2.07	1.43	1.38
4	H	2	T42	C31-C12	2.14	1.55	1.52
4	H	2	T42	C42-N41	2.15	1.51	1.47
4	H	2	T42	C21-C12	2.76	1.56	1.52
4	H	2	T42	O14-C14	2.86	1.45	1.40
4	H	2	T42	C24-C23	2.89	1.45	1.38
4	H	2	T42	C22-C21	3.05	1.44	1.39
4	H	2	T42	C32-C31	3.13	1.44	1.39
4	H	2	T42	C25-C26	3.17	1.45	1.38
4	H	2	T42	O44-C45	3.24	1.56	1.42
4	H	2	T42	C46-N41	3.82	1.55	1.47
4	H	2	T42	C33-C32	4.28	1.47	1.38
4	H	2	T42	C35-C36	4.67	1.48	1.38
4	H	2	T42	C26-C21	5.44	1.48	1.39
4	H	2	T42	C8B-C8A	10.12	1.73	1.39
4	H	2	T42	C8C-C8B	12.47	1.66	1.37
4	H	2	T42	C8A-C8	14.00	1.63	1.40
4	H	2	T42	C8C-N9	17.61	1.57	1.38

All (18) bond angle outliers are listed below:

Mol	Chain	Res	Type	Atoms	Z	Observed(°)	Ideal(°)
4	H	2	T42	C8B-C8C-N9	-15.53	95.63	107.67
4	H	2	T42	C25-C26-C21	-4.29	114.97	120.64
4	H	2	T42	C31-C12-C21	-3.93	103.54	111.32
4	H	2	T42	O44-C43-C42	-3.46	103.92	111.84
4	H	2	T42	C33-C32-C31	-3.28	116.31	120.64
4	H	2	T42	O10-C10-C11	-2.99	114.24	120.12
4	H	2	T42	C4-C5-N6	-2.95	106.84	111.25
4	H	2	T42	C36-C31-C12	-2.74	115.40	121.10
4	H	2	T42	C24-C23-C22	-2.22	116.94	120.19
4	H	2	T42	C35-C34-C33	2.01	123.46	119.93
4	H	2	T42	C8C-C8B-C8A	2.23	109.81	106.94

Continued on next page...

Continued from previous page...

Mol	Chain	Res	Type	Atoms	Z	Observed(°)	Ideal(°)
4	H	2	T42	C45-O44-C43	2.77	119.23	109.89
4	H	2	T42	O7-C7-N6	3.19	128.21	122.44
4	H	2	T42	C26-C21-C22	3.20	122.38	118.31
4	H	2	T42	C45-C46-N41	3.30	113.04	109.65
4	H	2	T42	C43-C42-N41	3.94	113.70	109.65
4	H	2	T42	C46-N41-C42	4.92	118.16	109.23
4	H	2	T42	C36-C31-C32	4.97	124.64	118.31

There are no chirality outliers.

There are no torsion outliers.

There are no ring outliers.

1 monomer is involved in 8 short contacts:

Mol	Chain	Res	Type	Clashes	Symm-Clashes
4	H	2	T42	8	0

5.7 Other polymers [i](#)

There are no such residues in this entry.

5.8 Polymer linkage issues [i](#)

There are no chain breaks in this entry.

6 Fit of model and data ⓘ

6.1 Protein, DNA and RNA chains ⓘ

EDS was not executed - this section will therefore be empty.

6.2 Non-standard residues in protein, DNA, RNA chains ⓘ

EDS was not executed - this section will therefore be empty.

6.3 Carbohydrates ⓘ

EDS was not executed - this section will therefore be empty.

6.4 Ligands ⓘ

EDS was not executed - this section will therefore be empty.

6.5 Other polymers ⓘ

EDS was not executed - this section will therefore be empty.