



Full wwPDB X-ray Structure Validation Report ⓘ

Jan 31, 2016 – 06:22 PM GMT

PDB ID : 1AIQ
Title : CRYSTAL STRUCTURE OF THYMIDYLATE SYNTHASE R126E MUTANT
Authors : Strop, P.; Montfort, W.R.
Deposited on : 1997-04-23
Resolution : 2.20 Å(reported)

This is a Full wwPDB X-ray Structure Validation Report for a publicly released PDB entry.
We welcome your comments at validation@mail.wwpdb.org
A user guide is available at
<http://wwpdb.org/validation/2016/XrayValidationReportHelp>
with specific help available everywhere you see the ⓘ symbol.

The following versions of software and data (see [references ⓘ](#)) were used in the production of this report:

MolProbity : 4.02b-467
Mogul : 1.7 (RC4), CSD as536be (2015)
Xtriage (Phenix) : **NOT EXECUTED**
EDS : **NOT EXECUTED**
Percentile statistics : 20151230.v01 (using entries in the PDB archive December 30th 2015)
Ideal geometry (proteins) : Engh & Huber (2001)
Ideal geometry (DNA, RNA) : Parkinson et al. (1996)
Validation Pipeline (wwPDB-VP) : trunk26865

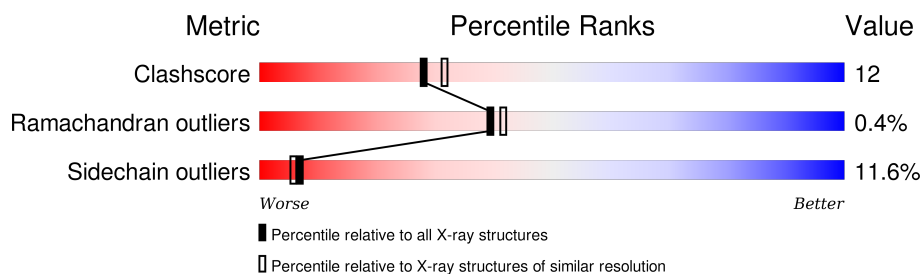
1 Overall quality at a glance

The following experimental techniques were used to determine the structure:

X-RAY DIFFRACTION

The reported resolution of this entry is 2.20 Å.

Percentile scores (ranging between 0-100) for global validation metrics of the entry are shown in the following graphic. The table shows the number of entries on which the scores are based.



Metric	Whole archive (#Entries)	Similar resolution (#Entries, resolution range(Å))
Clashscore	102246	4477 (2.20-2.20)
Ramachandran outliers	100387	4404 (2.20-2.20)
Sidechain outliers	100360	4405 (2.20-2.20)

The table below summarises the geometric issues observed across the polymeric chains and their fit to the electron density. The red, orange, yellow and green segments on the lower bar indicate the fraction of residues that contain outliers for ≥ 3 , 2, 1 and 0 types of geometric quality criteria. A grey segment represents the fraction of residues that are not modelled. The numeric value for each fraction is indicated below the corresponding segment, with a dot representing fractions $\leq 5\%$. The upper red bar (where present) indicates the fraction of residues that have poor fit to the electron density. The numeric value is given above the bar.

Note EDS was not executed.

Mol	Chain	Length	Quality of chain
1	A	264	 75% 20% 5%
1	B	264	 72% 22% 6%

2 Entry composition [i](#)

There are 4 unique types of molecules in this entry. The entry contains 4588 atoms, of which 0 are hydrogens and 0 are deuteriums.

In the tables below, the ZeroOcc column contains the number of atoms modelled with zero occupancy, the AltConf column contains the number of residues with at least one atom in alternate conformation and the Trace column contains the number of residues modelled with at most 2 atoms.

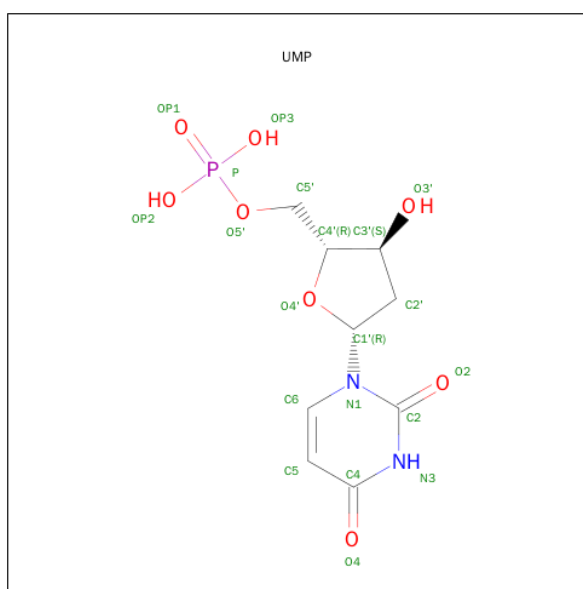
- Molecule 1 is a protein called THYMIDYLATE SYNTHASE.

Mol	Chain	Residues	Atoms					ZeroOcc	AltConf	Trace
1	A	264	Total	C	N	O	S	0	0	0
			2151	1374	368	397	12			
1	B	264	Total	C	N	O	S	0	0	0
			2151	1374	368	397	12			

There are 2 discrepancies between the modelled and reference sequences:

Chain	Residue	Modelled	Actual	Comment	Reference
A	126	GLU	ARG	ENGINEERED	UNP P0A884
B	126	GLU	ARG	ENGINEERED	UNP P0A884

- Molecule 2 is 2'-DEOXYURIDINE 5'-MONOPHOSPHATE (three-letter code: UMP) (formula: $C_9H_{13}N_2O_8P$).



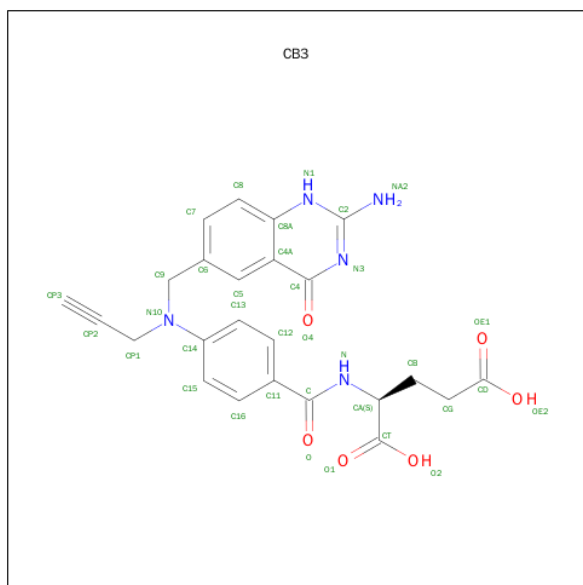
Mol	Chain	Residues	Atoms					ZeroOcc	AltConf
2	A	1	Total	C	N	O	P	0	0
			20	9	2	8	1		

Continued on next page...

Continued from previous page...

Mol	Chain	Residues	Atoms					ZeroOcc	AltConf
2	B	1	Total	C	N	O	P	0	0
			20	9	2	8	1		

- Molecule 3 is 10-PROPARGYL-5,8-DIDEAZAFOLIC ACID (three-letter code: CB3) (formula: $C_{24}H_{23}N_5O_6$).



Mol	Chain	Residues	Atoms				ZeroOcc	AltConf
3	A	1	Total	C	N	O	0	0
			35	24	5	6		
3	B	1	Total	C	N	O	0	0
			35	24	5	6		

- Molecule 4 is water.

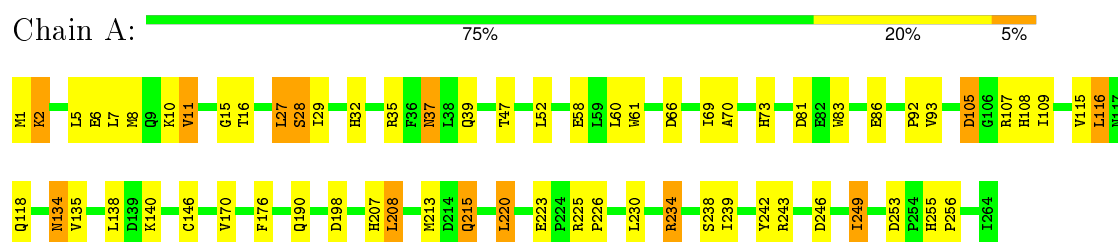
Mol	Chain	Residues	Atoms		ZeroOcc	AltConf
4	A	113	Total	O	0	0
			113	113		
4	B	63	Total	O	0	0
			63	63		

3 Residue-property plots

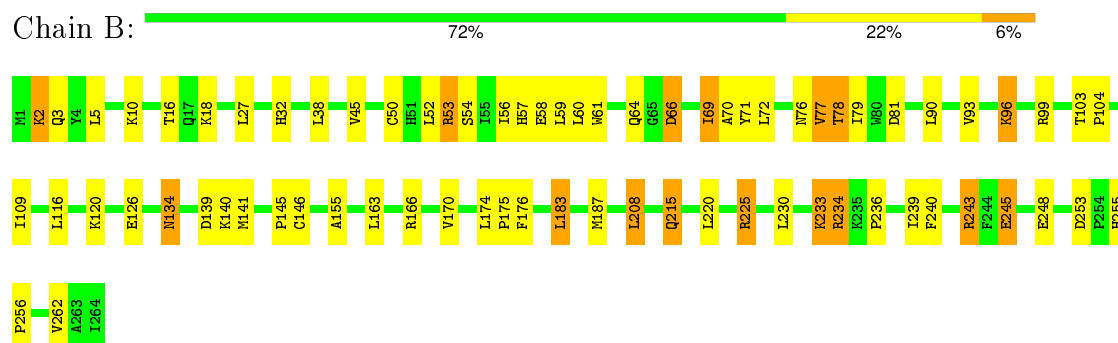
These plots are drawn for all protein, RNA and DNA chains in the entry. The first graphic for a chain summarises the proportions of errors displayed in the second graphic. The second graphic shows the sequence view annotated by issues in geometry and electron density. Residues are color-coded according to the number of geometric quality criteria for which they contain at least one outlier: green = 0, yellow = 1, orange = 2 and red = 3 or more. A red dot above a residue indicates a poor fit to the electron density ($RSRZ > 2$). Stretches of 2 or more consecutive residues without any outlier are shown as a green connector. Residues present in the sample, but not in the model, are shown in grey.

Note EDS was not executed.

• Molecule 1: THYMIDYLATE SYNTHASE



• Molecule 1: THYMIDYLATE SYNTHASE



4 Data and refinement statistics

Xtriage (Phenix) and EDS were not executed - this section will therefore be incomplete.

Property	Value	Source
Space group	P 63	Depositor
Cell constants a, b, c, α , β , γ	126.61Å 126.61Å 67.30Å 90.00° 90.00° 120.00°	Depositor
Resolution (Å)	20.00 – 2.20	Depositor
% Data completeness (in resolution range)	90.0 (20.00-2.20)	Depositor
R_{merge}	(Not available)	Depositor
R_{sym}	0.05	Depositor
Refinement program	TNT V. 5-E	Depositor
R, R_{free}	0.163 , (Not available)	Depositor
Estimated twinning fraction	No twinning to report.	Xtriage
Total number of atoms	4588	wwPDB-VP
Average B, all atoms (Å ²)	31.0	wwPDB-VP

5 Model quality [i](#)

5.1 Standard geometry [i](#)

Bond lengths and bond angles in the following residue types are not validated in this section: CB3, UMP, CXM

The Z score for a bond length (or angle) is the number of standard deviations the observed value is removed from the expected value. A bond length (or angle) with $|Z| > 5$ is considered an outlier worth inspection. RMSZ is the root-mean-square of all Z scores of the bond lengths (or angles).

Mol	Chain	Bond lengths		Bond angles	
		RMSZ	# $ Z > 5$	RMSZ	# $ Z > 5$
1	A	0.50	0/2200	0.63	0/2988
1	B	0.52	0/2200	0.66	1/2988 (0.0%)
All	All	0.51	0/4400	0.65	1/5976 (0.0%)

There are no bond length outliers.

All (1) bond angle outliers are listed below:

Mol	Chain	Res	Type	Atoms	Z	Observed(°)	Ideal(°)
1	B	243	ARG	NE-CZ-NH2	6.77	123.69	120.30

There are no chirality outliers.

There are no planarity outliers.

5.2 Too-close contacts [i](#)

In the following table, the Non-H and H(model) columns list the number of non-hydrogen atoms and hydrogen atoms in the chain respectively. The H(added) column lists the number of hydrogen atoms added and optimized by MolProbity. The Clashes column lists the number of clashes within the asymmetric unit, whereas Symm-Clashes lists symmetry related clashes.

Mol	Chain	Non-H	H(model)	H(added)	Clashes	Symm-Clashes
1	A	2151	0	2072	53	0
1	B	2151	0	2073	48	0
2	A	20	0	9	2	0
2	B	20	0	10	3	0
3	A	35	0	21	3	0
3	B	35	0	21	0	0
4	A	113	0	0	3	0
4	B	63	0	0	1	0

Continued on next page...

Continued from previous page...

Mol	Chain	Non-H	H(model)	H(added)	Clashes	Symm-Clashes
All	All	4588	0	4206	100	0

The all-atom clashscore is defined as the number of clashes found per 1000 atoms (including hydrogen atoms). The all-atom clashscore for this structure is 12.

All (100) close contacts within the same asymmetric unit are listed below, sorted by their clash magnitude.

Atom-1	Atom-2	Interatomic distance (Å)	Clash overlap (Å)
1:A:52:LEU:HD21	1:A:249:ILE:HD13	1.19	1.12
1:A:215:GLN:HE21	1:A:215:GLN:H	1.04	0.95
1:B:215:GLN:HE21	1:B:215:GLN:H	1.03	0.95
1:A:146:CYS:SG	2:A:265:UMP:C5	2.65	0.89
1:A:52:LEU:HD21	1:A:249:ILE:CD1	2.04	0.85
1:B:53:ARG:HH21	1:B:76:ASN:HB2	1.42	0.82
1:B:183:LEU:HD13	1:B:187:MET:HE2	1.59	0.82
1:B:215:GLN:NE2	1:B:215:GLN:H	1.76	0.82
1:B:146:CYS:SG	2:B:266:UMP:C6	2.73	0.82
1:B:234:ARG:O	1:B:236:PRO:HD3	1.84	0.77
1:B:183:LEU:HD13	1:B:187:MET:CE	2.15	0.76
1:A:215:GLN:NE2	1:A:215:GLN:H	1.82	0.76
1:A:10:LYS:NZ	1:A:32:HIS:HD2	1.87	0.71
1:B:60:LEU:O	1:B:64:GLN:HG2	1.90	0.71
1:B:52:LEU:HG	1:B:56:ILE:CD1	2.20	0.71
1:A:52:LEU:CD2	1:A:249:ILE:HD13	2.10	0.70
1:A:225:ARG:HD3	1:A:253:ASP:O	1.91	0.69
1:B:225:ARG:HD2	1:B:253:ASP:O	1.93	0.69
1:A:8:MET:CE	1:A:220:LEU:HD13	2.24	0.68
1:B:215:GLN:HE21	1:B:215:GLN:N	1.86	0.66
1:B:170:VAL:HB	1:B:208:LEU:HD13	1.78	0.65
1:B:52:LEU:HG	1:B:56:ILE:HD12	1.78	0.64
1:B:45:VAL:HG22	1:B:50:CYS:SG	2.36	0.64
1:A:215:GLN:N	1:A:215:GLN:HE21	1.87	0.63
1:A:234:ARG:HD3	1:A:246:ASP:OD1	1.99	0.63
1:B:53:ARG:CG	1:B:53:ARG:HH11	2.13	0.62
1:B:59:LEU:HD21	1:B:187:MET:HE3	1.81	0.62
1:A:10:LYS:HZ1	1:A:32:HIS:HD2	1.48	0.60
1:A:255:HIS:HB3	1:A:256:PRO:HD2	1.85	0.58
1:B:2:LYS:HD2	1:B:3:GLN:OE1	2.03	0.57
1:B:134:ASN:C	1:B:134:ASN:HD22	2.06	0.57
1:A:170:VAL:HB	1:A:208:LEU:HD13	1.86	0.57
1:A:37:ASN:C	1:A:37:ASN:HD22	2.08	0.57

Continued on next page...

Continued from previous page...

Atom-1	Atom-2	Interatomic distance (Å)	Clash overlap (Å)
1:B:45:VAL:HG13	4:B:312:HOH:O	2.04	0.57
1:B:53:ARG:NH2	1:B:76:ASN:HB2	2.16	0.56
1:A:15:GLY:HA3	1:A:27:LEU:HD22	1.86	0.55
1:A:92:PRO:HG3	1:A:140:LYS:HE2	1.87	0.55
1:A:5:LEU:HD11	1:A:47:THR:HG21	1.87	0.55
3:A:266:CB3:H13	3:A:266:CB3:CP2	2.36	0.55
1:A:58:GLU:O	1:A:61:TRP:HB3	2.08	0.54
1:A:134:ASN:C	1:A:134:ASN:HD22	2.10	0.54
1:A:108:HIS:HD2	4:A:412:HOH:O	1.90	0.54
1:B:96:LYS:HD3	1:B:96:LYS:O	2.09	0.52
1:B:245:GLU:CD	1:B:245:GLU:H	2.13	0.52
1:A:37:ASN:ND2	1:A:39:GLN:H	2.08	0.51
1:B:103:THR:HB	1:B:104:PRO:CD	2.39	0.51
1:A:83:TRP:CZ2	3:A:266:CB3:H8	2.45	0.51
1:A:243:ARG:HH11	1:A:243:ARG:HB2	1.76	0.51
1:A:16:THR:HG21	1:B:155:ALA:HB1	1.93	0.50
1:A:86:GLU:H	1:A:86:GLU:CD	2.15	0.50
1:A:2:LYS:HD3	1:A:6:GLU:OE2	2.12	0.49
1:A:208:LEU:HB3	1:A:213:MET:CE	2.41	0.49
1:A:73:HIS:HE1	1:A:81:ASP:OD1	1.95	0.49
1:A:11:VAL:HG22	1:A:208:LEU:HD22	1.95	0.49
1:A:208:LEU:HB3	1:A:213:MET:HE1	1.93	0.49
1:A:255:HIS:HB3	1:A:256:PRO:CD	2.43	0.48
1:B:78:THR:OG1	1:B:81:ASP:OD2	2.29	0.48
1:A:225:ARG:HB3	1:A:226:PRO:HD2	1.96	0.47
1:B:72:LEU:O	1:B:77:VAL:HG13	2.13	0.47
2:A:265:UMP:OP2	1:B:126:GLU:OE1	2.33	0.47
1:A:115:VAL:HA	1:A:118:GLN:HE21	1.79	0.47
1:A:37:ASN:HD22	1:A:39:GLN:H	1.61	0.47
1:B:57:HIS:HD2	1:B:71:TYR:OH	1.99	0.46
1:B:10:LYS:NZ	1:B:32:HIS:HD2	2.14	0.45
1:B:59:LEU:HD23	1:B:187:MET:HE1	1.98	0.45
1:A:135:VAL:HG12	1:B:109:ILE:HD12	1.99	0.45
1:A:10:LYS:HD3	1:A:29:ILE:HD13	1.97	0.45
1:A:225:ARG:HB3	1:A:226:PRO:CD	2.46	0.45
1:A:190:GLN:NE2	1:A:242:TYR:OH	2.39	0.45
1:B:53:ARG:NH1	1:B:53:ARG:HG3	2.32	0.45
1:A:1:CXM:O	1:A:2:LYS:C	2.55	0.44
1:A:28:SER:HB2	1:A:207:HIS:HB3	1.99	0.44
1:B:61:TRP:HH2	1:B:90:LEU:CD1	2.31	0.44
1:A:47:THR:HA	1:A:255:HIS:CD2	2.53	0.43

Continued on next page...

Continued from previous page...

Atom-1	Atom-2	Interatomic distance (Å)	Clash overlap (Å)
1:A:69:ILE:O	1:A:70:ALA:C	2.56	0.43
1:A:8:MET:HE3	1:A:220:LEU:HD22	2.00	0.43
1:B:58:GLU:O	1:B:61:TRP:HB3	2.18	0.43
1:B:141:MET:SD	1:B:145:PRO:HD3	2.59	0.43
1:B:61:TRP:CD1	1:B:66:ASP:HB3	2.54	0.43
1:B:174:LEU:HB3	1:B:175:PRO:HD3	2.00	0.43
1:A:105:ASP:OD1	1:A:107:ARG:NE	2.30	0.42
1:B:255:HIS:HB3	1:B:256:PRO:CD	2.50	0.42
1:A:35:ARG:HD3	1:A:198:ASP:OD2	2.20	0.42
1:B:166:ARG:NH1	2:B:266:UMP:OP1	2.46	0.42
1:B:59:LEU:CD2	1:B:187:MET:CE	2.98	0.41
1:B:146:CYS:SG	2:B:266:UMP:C5	3.12	0.41
1:B:99:ARG:CZ	1:B:240:PHE:CE1	3.04	0.41
1:B:53:ARG:HG3	1:B:53:ARG:HH11	1.81	0.41
1:A:108:HIS:HE1	4:A:307:HOH:O	2.01	0.41
1:B:77:VAL:HG23	1:B:79:ILE:HG12	2.02	0.41
1:A:61:TRP:CD1	1:A:66:ASP:HB3	2.56	0.41
1:A:116:LEU:HA	1:A:116:LEU:HD23	1.86	0.41
1:B:69:ILE:O	1:B:70:ALA:C	2.59	0.41
1:B:233:LYS:HE3	1:B:248:GLU:OE1	2.20	0.41
1:A:10:LYS:HZ2	1:A:32:HIS:HD2	1.68	0.41
1:A:32:HIS:HE1	4:A:326:HOH:O	2.04	0.41
1:B:183:LEU:HD13	1:B:187:MET:HE1	1.98	0.40
1:A:83:TRP:CH2	3:A:266:CB3:C8	3.05	0.40
1:A:243:ARG:NH1	1:A:243:ARG:HB2	2.35	0.40
1:B:215:GLN:NE2	1:B:215:GLN:N	2.57	0.40

There are no symmetry-related clashes.

5.3 Torsion angles

5.3.1 Protein backbone

In the following table, the Percentiles column shows the percent Ramachandran outliers of the chain as a percentile score with respect to all X-ray entries followed by that with respect to entries of similar resolution.

The Analysed column shows the number of residues for which the backbone conformation was analysed, and the total number of residues.

Mol	Chain	Analysed	Favoured	Allowed	Outliers	Percentiles	
1	A	262/264 (99%)	253 (97%)	8 (3%)	1 (0%)	39	42
1	B	262/264 (99%)	253 (97%)	8 (3%)	1 (0%)	39	42
All	All	524/528 (99%)	506 (97%)	16 (3%)	2 (0%)	39	42

All (2) Ramachandran outliers are listed below:

Mol	Chain	Res	Type
1	A	93	VAL
1	B	93	VAL

5.3.2 Protein sidechains ⓘ

In the following table, the Percentiles column shows the percent sidechain outliers of the chain as a percentile score with respect to all X-ray entries followed by that with respect to entries of similar resolution.

The Analysed column shows the number of residues for which the sidechain conformation was analysed, and the total number of residues.

Mol	Chain	Analysed	Rotameric	Outliers	Percentiles	
1	A	232/232 (100%)	210 (90%)	22 (10%)	11	10
1	B	232/232 (100%)	200 (86%)	32 (14%)	4	3
All	All	464/464 (100%)	410 (88%)	54 (12%)	7	6

All (54) residues with a non-rotameric sidechain are listed below:

Mol	Chain	Res	Type
1	A	2	LYS
1	A	7	LEU
1	A	11	VAL
1	A	27	LEU
1	A	28	SER
1	A	37	ASN
1	A	60	LEU
1	A	105	ASP
1	A	109	ILE
1	A	116	LEU
1	A	134	ASN
1	A	138	LEU
1	A	176	PHE
1	A	208	LEU

Continued on next page...

Continued from previous page...

Mol	Chain	Res	Type
1	A	215	GLN
1	A	220	LEU
1	A	223	GLU
1	A	230	LEU
1	A	234	ARG
1	A	238	SER
1	A	239	ILE
1	A	249	ILE
1	B	2	LYS
1	B	5	LEU
1	B	16	THR
1	B	18	LYS
1	B	27	LEU
1	B	38	LEU
1	B	53	ARG
1	B	54	SER
1	B	66	ASP
1	B	69	ILE
1	B	77	VAL
1	B	78	THR
1	B	96	LYS
1	B	116	LEU
1	B	120	LYS
1	B	134	ASN
1	B	139	ASP
1	B	140	LYS
1	B	163	LEU
1	B	176	PHE
1	B	183	LEU
1	B	208	LEU
1	B	215	GLN
1	B	220	LEU
1	B	225	ARG
1	B	230	LEU
1	B	233	LYS
1	B	234	ARG
1	B	239	ILE
1	B	243	ARG
1	B	245	GLU
1	B	262	VAL

Some sidechains can be flipped to improve hydrogen bonding and reduce clashes. All (24) such sidechains are listed below:

Mol	Chain	Res	Type
1	A	19	ASN
1	A	32	HIS
1	A	37	ASN
1	A	51	HIS
1	A	73	HIS
1	A	87	ASN
1	A	97	GLN
1	A	108	HIS
1	A	117	ASN
1	A	118	GLN
1	A	134	ASN
1	A	151	GLN
1	A	186	HIS
1	A	190	GLN
1	A	215	GLN
1	A	217	HIS
1	B	32	HIS
1	B	57	HIS
1	B	75	ASN
1	B	117	ASN
1	B	118	GLN
1	B	134	ASN
1	B	151	GLN
1	B	215	GLN

5.3.3 RNA ⓘ

There are no RNA molecules in this entry.

5.4 Non-standard residues in protein, DNA, RNA chains ⓘ

2 non-standard protein/DNA/RNA residues are modelled in this entry.

In the following table, the Counts columns list the number of bonds (or angles) for which Mogul statistics could be retrieved, the number of bonds (or angles) that are observed in the model and the number of bonds (or angles) that are defined in the chemical component dictionary. The Link column lists molecule types, if any, to which the group is linked. The Z score for a bond length (or angle) is the number of standard deviations the observed value is removed from the expected value. A bond length (or angle) with $|Z| > 2$ is considered an outlier worth inspection. RMSZ is the root-mean-square of all Z scores of the bond lengths (or angles).

Mol	Type	Chain	Res	Link	Bond lengths			Bond angles		
					Counts	RMSZ	$\# Z > 2$	Counts	RMSZ	$\# Z > 2$
1	CXM	A	1	1	6,10,11	0.51	0	4,11,13	0.97	0

Mol	Type	Chain	Res	Link	Bond lengths			Bond angles		
					Counts	RMSZ	# Z > 2	Counts	RMSZ	# Z > 2
1	CXM	B	1	1	6,10,11	2.63	1 (16%)	4,11,13	1.19	0

In the following table, the Chirals column lists the number of chiral outliers, the number of chiral centers analysed, the number of these observed in the model and the number defined in the chemical component dictionary. Similar counts are reported in the Torsion and Rings columns. '-' means no outliers of that kind were identified.

Mol	Type	Chain	Res	Link	Chirals	Torsions	Rings
1	CXM	A	1	1	-	0/6/10/12	0/0/0/0
1	CXM	B	1	1	-	0/6/10/12	0/0/0/0

All (1) bond length outliers are listed below:

Mol	Chain	Res	Type	Atoms	Z	Observed(Å)	Ideal(Å)
1	B	1	CXM	CA-N	6.23	1.55	1.46

There are no bond angle outliers.

There are no chirality outliers.

There are no torsion outliers.

There are no ring outliers.

1 monomer is involved in 1 short contact:

Mol	Chain	Res	Type	Clashes	Symm-Clashes
1	A	1	CXM	1	0

5.5 Carbohydrates [i](#)

There are no carbohydrates in this entry.

5.6 Ligand geometry [i](#)

4 ligands are modelled in this entry.

In the following table, the Counts columns list the number of bonds (or angles) for which Mogul statistics could be retrieved, the number of bonds (or angles) that are observed in the model and the number of bonds (or angles) that are defined in the chemical component dictionary. The Link column lists molecule types, if any, to which the group is linked. The Z score for a bond length (or angle) is the number of standard deviations the observed value is removed from the expected

value. A bond length (or angle) with $|Z| > 2$ is considered an outlier worth inspection. RMSZ is the root-mean-square of all Z scores of the bond lengths (or angles).

Mol	Type	Chain	Res	Link	Bond lengths			Bond angles		
					Counts	RMSZ	$\# Z > 2$	Counts	RMSZ	$\# Z > 2$
2	UMP	A	265	1	16,21,21	1.56	4 (25%)	23,31,31	3.66	9 (39%)
3	CB3	A	266	-	31,37,37	2.16	13 (41%)	35,51,51	2.30	15 (42%)
2	UMP	B	266	-	16,21,21	2.03	4 (25%)	23,31,31	3.28	8 (34%)
3	CB3	B	267	-	31,37,37	2.16	11 (35%)	35,51,51	2.62	17 (48%)

In the following table, the Chirals column lists the number of chiral outliers, the number of chiral centers analysed, the number of these observed in the model and the number defined in the chemical component dictionary. Similar counts are reported in the Torsion and Rings columns. '-' means no outliers of that kind were identified.

Mol	Type	Chain	Res	Link	Chirals	Torsions	Rings
2	UMP	A	265	1	-	0/6/22/22	0/2/2/2
3	CB3	A	266	-	-	0/21/28/28	0/3/3/3
2	UMP	B	266	-	-	0/6/22/22	0/2/2/2
3	CB3	B	267	-	-	0/21/28/28	0/3/3/3

All (32) bond length outliers are listed below:

Mol	Chain	Res	Type	Atoms	Z	Observed(Å)	Ideal(Å)
3	B	267	CB3	C4-C4A	-3.52	1.35	1.41
3	A	266	CB3	C4-C4A	-3.50	1.35	1.41
3	A	266	CB3	C8-C8A	-2.72	1.36	1.41
2	A	265	UMP	C6-N1	-2.50	1.32	1.35
3	A	266	CB3	C9-C6	-2.38	1.47	1.51
3	A	266	CB3	C4A-C8A	-2.29	1.36	1.41
3	B	267	CB3	C8-C8A	-2.20	1.37	1.41
3	A	266	CB3	C5-C4A	-2.13	1.37	1.41
3	B	267	CB3	C4A-C8A	-2.11	1.36	1.41
3	B	267	CB3	C9-C6	-2.09	1.47	1.51
3	A	266	CB3	C16-C11	-2.02	1.35	1.39
3	B	267	CB3	CB-CA	2.12	1.56	1.53
3	A	266	CB3	CB-CA	2.51	1.56	1.53
2	A	265	UMP	C4-N3	2.54	1.37	1.33
2	B	266	UMP	O4'-C4'	2.54	1.50	1.45
3	B	267	CB3	C13-C12	2.62	1.43	1.38
3	A	266	CB3	C16-C15	2.66	1.43	1.38
3	A	266	CB3	C14-N10	2.75	1.46	1.38
2	A	265	UMP	O4'-C1'	2.80	1.48	1.42
2	B	266	UMP	O4'-C1'	2.81	1.48	1.42

Continued on next page...

Continued from previous page...

Mol	Chain	Res	Type	Atoms	Z	Observed(Å)	Ideal(Å)
3	B	267	CB3	C14-N10	2.81	1.46	1.38
2	B	266	UMP	C4-N3	2.83	1.38	1.33
3	A	266	CB3	C13-C12	2.93	1.44	1.38
3	B	267	CB3	C16-C15	3.16	1.44	1.38
2	A	265	UMP	O4'-C4'	3.22	1.52	1.45
3	A	266	CB3	CP1-N10	3.67	1.49	1.46
3	B	267	CB3	CP1-N10	3.94	1.49	1.46
3	A	266	CB3	C9-N10	4.03	1.51	1.46
3	B	267	CB3	C9-N10	4.56	1.52	1.46
3	A	266	CB3	C2-NA2	5.05	1.44	1.34
2	B	266	UMP	C6-C5	5.31	1.49	1.38
3	B	267	CB3	C2-NA2	5.56	1.45	1.34

All (49) bond angle outliers are listed below:

Mol	Chain	Res	Type	Atoms	Z	Observed(°)	Ideal(°)
3	B	267	CB3	O-C-C11	-7.36	108.39	120.97
2	A	265	UMP	C6-N1-C2	-5.87	111.78	121.28
3	B	267	CB3	CP1-N10-C14	-5.07	109.82	119.05
2	A	265	UMP	C5-C4-N3	-4.42	111.79	123.12
3	A	266	CB3	C9-C6-C7	-4.41	112.45	120.78
3	B	267	CB3	CG-CB-CA	-4.33	104.19	112.99
3	A	266	CB3	CP1-N10-C14	-4.32	111.19	119.05
3	A	266	CB3	CG-CB-CA	-4.23	104.39	112.99
2	B	266	UMP	C5-C4-N3	-4.03	112.79	123.12
3	B	267	CB3	C13-C14-N10	-4.02	115.97	121.38
3	B	267	CB3	C15-C16-C11	-3.93	116.20	120.76
3	B	267	CB3	C9-C6-C7	-3.78	113.65	120.78
3	A	266	CB3	C15-C16-C11	-3.56	116.64	120.76
3	A	266	CB3	C6-C5-C4A	-3.54	116.28	122.65
3	B	267	CB3	C13-C12-C11	-3.26	116.98	120.76
3	B	267	CB3	C6-C5-C4A	-3.11	117.05	122.65
3	A	266	CB3	C11-C-N	-3.05	111.50	116.93
3	B	267	CB3	N1-C2-N3	-3.01	122.85	127.44
2	A	265	UMP	O4'-C4'-C3'	-2.99	98.14	105.67
2	B	266	UMP	O5'-P-OP1	-2.93	99.68	107.14
3	A	266	CB3	N1-C2-N3	-2.87	123.08	127.44
3	A	266	CB3	C16-C11-C	-2.63	112.27	120.60
3	A	266	CB3	C13-C12-C11	-2.53	117.83	120.76
3	B	267	CB3	C16-C11-C	-2.39	113.03	120.60
3	B	267	CB3	C5-C4A-C4	-2.34	119.33	122.22
3	A	266	CB3	C13-C14-N10	-2.30	118.29	121.38

Continued on next page...

Continued from previous page...

Mol	Chain	Res	Type	Atoms	Z	Observed(°)	Ideal(°)
2	B	266	UMP	O4'-C4'-C3'	-2.22	100.07	105.67
3	B	267	CB3	CB-CG-CD	-2.09	104.50	113.02
2	B	266	UMP	C3'-C2'-C1'	-2.01	97.55	102.40
2	A	265	UMP	O5'-P-OP1	-2.01	102.02	107.14
2	A	265	UMP	OP3-P-O5'	2.02	112.39	106.56
3	B	267	CB3	C7-C6-C5	2.03	122.12	118.82
2	B	266	UMP	OP2-P-OP1	2.09	117.32	110.58
3	A	266	CB3	C5-C4A-C8A	2.21	120.78	118.14
2	A	265	UMP	C5-C6-N1	2.23	126.06	120.58
3	A	266	CB3	C7-C6-C5	2.42	122.76	118.82
3	B	267	CB3	C5-C4A-C8A	2.46	121.08	118.14
3	B	267	CB3	C9-N10-C14	2.51	125.44	120.93
3	B	267	CB3	C4-N3-C2	2.52	119.44	115.94
2	B	266	UMP	C6-C5-C4	2.53	122.01	117.28
3	A	266	CB3	C4-N3-C2	2.60	119.54	115.94
3	B	267	CB3	C16-C11-C12	3.22	123.39	118.60
2	B	266	UMP	O5'-C5'-C4'	3.32	121.36	109.12
3	A	266	CB3	C9-N10-C14	3.39	127.03	120.93
2	A	265	UMP	O4'-C1'-N1	3.41	113.63	107.72
3	A	266	CB3	C16-C11-C12	3.78	124.22	118.60
2	A	265	UMP	O5'-C5'-C4'	4.02	123.94	109.12
2	B	266	UMP	C4-N3-C2	13.39	127.41	114.14
2	A	265	UMP	C4-N3-C2	13.77	127.78	114.14

There are no chirality outliers.

There are no torsion outliers.

There are no ring outliers.

3 monomers are involved in 8 short contacts:

Mol	Chain	Res	Type	Clashes	Symm-Clashes
2	A	265	UMP	2	0
3	A	266	CB3	3	0
2	B	266	UMP	3	0

5.7 Other polymers ⓘ

There are no such residues in this entry.

5.8 Polymer linkage issues ⓘ

There are no chain breaks in this entry.

6 Fit of model and data ⓘ

6.1 Protein, DNA and RNA chains ⓘ

EDS was not executed - this section will therefore be empty.

6.2 Non-standard residues in protein, DNA, RNA chains ⓘ

EDS was not executed - this section will therefore be empty.

6.3 Carbohydrates ⓘ

EDS was not executed - this section will therefore be empty.

6.4 Ligands ⓘ

EDS was not executed - this section will therefore be empty.

6.5 Other polymers ⓘ

EDS was not executed - this section will therefore be empty.