



# wwPDB X-ray Structure Validation Summary Report ⓘ

Feb 1, 2016 – 02:47 PM GMT

PDB ID : 4AIP  
Title : The FrpB iron transporter from *Neisseria meningitidis* (F3-3 variant)  
Authors : Saleem, M.; Prince, S.M.; Derrick, J.P.  
Deposited on : 2012-02-11  
Resolution : 2.40 Å(reported)

This is a wwPDB X-ray Structure Validation Summary Report for a publicly released PDB entry.  
We welcome your comments at [validation@mail.wwpdb.org](mailto:validation@mail.wwpdb.org)  
A user guide is available at  
<http://wwpdb.org/validation/2016/XrayValidationReportHelp>  
with specific help available everywhere you see the ⓘ symbol.

---

The following versions of software and data (see [references ⓘ](#)) were used in the production of this report:

MolProbity : 4.02b-467  
Mogul : 1.7 (RC4), CSD as536be (2015)  
Xtriage (Phenix) : 1.9-1692  
EDS : rb-20026688  
Percentile statistics : 20151230.v01 (using entries in the PDB archive December 30th 2015)  
Refmac : 5.8.0135  
CCP4 : 6.5.0  
Ideal geometry (proteins) : Engh & Huber (2001)  
Ideal geometry (DNA, RNA) : Parkinson et al. (1996)  
Validation Pipeline (wwPDB-VP) : trunk26865

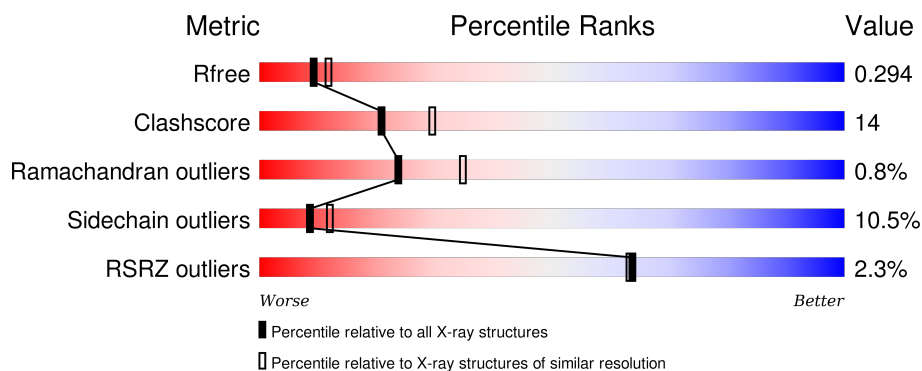
# 1 Overall quality at a glance

The following experimental techniques were used to determine the structure:

## *X-RAY DIFFRACTION*

The reported resolution of this entry is 2.40 Å.

Percentile scores (ranging between 0-100) for global validation metrics of the entry are shown in the following graphic. The table shows the number of entries on which the scores are based.



Metric	Whole archive (#Entries)	Similar resolution (#Entries, resolution range(Å))
$R_{free}$	91344	2919 (2.40-2.40)
Clashscore	102246	3407 (2.40-2.40)
Ramachandran outliers	100387	3351 (2.40-2.40)
Sidechain outliers	100360	3352 (2.40-2.40)
RSRZ outliers	91569	2928 (2.40-2.40)

The table below summarises the geometric issues observed across the polymeric chains and their fit to the electron density. The red, orange, yellow and green segments on the lower bar indicate the fraction of residues that contain outliers for  $\geq 3$ , 2, 1 and 0 types of geometric quality criteria. A grey segment represents the fraction of residues that are not modelled. The numeric value for each fraction is indicated below the corresponding segment, with a dot representing fractions  $\leq 5\%$ . The upper red bar (where present) indicates the fraction of residues that have poor fit to the electron density. The numeric value is given above the bar.

Mol	Chain	Length	Quality of chain
1	A	742	<div> <div>61%</div> <div>22%</div> <div>5%</div> <div>11%</div> </div>
1	B	742	<div> <div>3%</div> <div>61%</div> <div>23%</div> <div>10%</div> </div>
1	C	742	<div> <div>2%</div> <div>61%</div> <div>23%</div> <div>10%</div> </div>

## 2 Entry composition

There are 4 unique types of molecules in this entry. The entry contains 15985 atoms, of which 0 are hydrogens and 0 are deuteriums.

In the tables below, the ZeroOcc column contains the number of atoms modelled with zero occupancy, the AltConf column contains the number of residues with at least one atom in alternate conformation and the Trace column contains the number of residues modelled with at most 2 atoms.

- Molecule 1 is a protein called FE-REGULATED PROTEIN B.

Mol	Chain	Residues	Atoms					ZeroOcc	AltConf	Trace
1	A	661	Total	C	N	O	S	0	0	0
			5178	3234	944	995	5			
1	B	665	Total	C	N	O	S	0	0	0
			5209	3247	956	1002	4			
1	C	665	Total	C	N	O	S	0	0	0
			5212	3253	952	1002	5			

There are 138 discrepancies between the modelled and reference sequences:

Chain	Residue	Modelled	Actual	Comment	Reference
A	1	MET	-	EXPRESSION TAG	UNP Q51162
A	2	HIS	-	EXPRESSION TAG	UNP Q51162
A	3	HIS	-	EXPRESSION TAG	UNP Q51162
A	4	HIS	-	EXPRESSION TAG	UNP Q51162
A	5	HIS	-	EXPRESSION TAG	UNP Q51162
A	6	HIS	-	EXPRESSION TAG	UNP Q51162
A	7	HIS	-	EXPRESSION TAG	UNP Q51162
A	8	SER	-	EXPRESSION TAG	UNP Q51162
A	9	SER	-	EXPRESSION TAG	UNP Q51162
A	10	GLY	-	EXPRESSION TAG	UNP Q51162
A	11	LEU	-	EXPRESSION TAG	UNP Q51162
A	12	VAL	-	EXPRESSION TAG	UNP Q51162
A	13	PRO	-	EXPRESSION TAG	UNP Q51162
A	14	ARG	-	EXPRESSION TAG	UNP Q51162
A	15	GLY	-	EXPRESSION TAG	UNP Q51162
A	16	SER	-	EXPRESSION TAG	UNP Q51162
A	17	GLY	-	EXPRESSION TAG	UNP Q51162
A	18	MET	-	EXPRESSION TAG	UNP Q51162
A	19	LYS	-	EXPRESSION TAG	UNP Q51162
A	20	GLU	-	EXPRESSION TAG	UNP Q51162
A	21	THR	-	EXPRESSION TAG	UNP Q51162
A	22	ALA	-	EXPRESSION TAG	UNP Q51162
A	23	ALA	-	EXPRESSION TAG	UNP Q51162

*Continued on next page...*

*Continued from previous page...*

Chain	Residue	Modelled	Actual	Comment	Reference
A	24	ALA	-	EXPRESSION TAG	UNP Q51162
A	25	LYS	-	EXPRESSION TAG	UNP Q51162
A	26	PHE	-	EXPRESSION TAG	UNP Q51162
A	27	GLU	-	EXPRESSION TAG	UNP Q51162
A	28	ARG	-	EXPRESSION TAG	UNP Q51162
A	29	GLN	-	EXPRESSION TAG	UNP Q51162
A	30	HIS	-	EXPRESSION TAG	UNP Q51162
A	31	MET	-	EXPRESSION TAG	UNP Q51162
A	32	ASP	-	EXPRESSION TAG	UNP Q51162
A	33	SER	-	EXPRESSION TAG	UNP Q51162
A	34	PRO	-	EXPRESSION TAG	UNP Q51162
A	35	ASP	-	EXPRESSION TAG	UNP Q51162
A	36	LEU	-	EXPRESSION TAG	UNP Q51162
A	37	GLY	-	EXPRESSION TAG	UNP Q51162
A	38	THR	-	EXPRESSION TAG	UNP Q51162
A	39	ASP	-	EXPRESSION TAG	UNP Q51162
A	40	ASP	-	EXPRESSION TAG	UNP Q51162
A	41	ASP	-	EXPRESSION TAG	UNP Q51162
A	42	ASP	-	EXPRESSION TAG	UNP Q51162
A	43	LYS	-	EXPRESSION TAG	UNP Q51162
A	44	MET	-	EXPRESSION TAG	UNP Q51162
A	197	ASN	GLU	CONFLICT	UNP Q51162
A	446	ILE	VAL	CONFLICT	UNP Q51162
B	1	MET	-	EXPRESSION TAG	UNP Q51162
B	2	HIS	-	EXPRESSION TAG	UNP Q51162
B	3	HIS	-	EXPRESSION TAG	UNP Q51162
B	4	HIS	-	EXPRESSION TAG	UNP Q51162
B	5	HIS	-	EXPRESSION TAG	UNP Q51162
B	6	HIS	-	EXPRESSION TAG	UNP Q51162
B	7	HIS	-	EXPRESSION TAG	UNP Q51162
B	8	SER	-	EXPRESSION TAG	UNP Q51162
B	9	SER	-	EXPRESSION TAG	UNP Q51162
B	10	GLY	-	EXPRESSION TAG	UNP Q51162
B	11	LEU	-	EXPRESSION TAG	UNP Q51162
B	12	VAL	-	EXPRESSION TAG	UNP Q51162
B	13	PRO	-	EXPRESSION TAG	UNP Q51162
B	14	ARG	-	EXPRESSION TAG	UNP Q51162
B	15	GLY	-	EXPRESSION TAG	UNP Q51162
B	16	SER	-	EXPRESSION TAG	UNP Q51162
B	17	GLY	-	EXPRESSION TAG	UNP Q51162
B	18	MET	-	EXPRESSION TAG	UNP Q51162
B	19	LYS	-	EXPRESSION TAG	UNP Q51162

*Continued on next page...*

*Continued from previous page...*

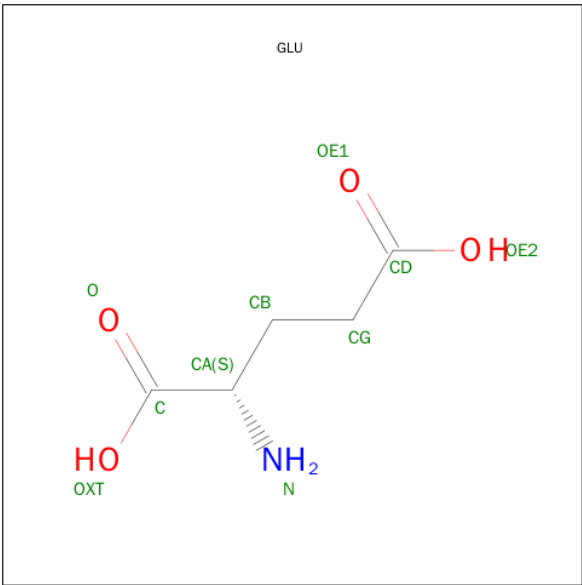
Chain	Residue	Modelled	Actual	Comment	Reference
B	20	GLU	-	EXPRESSION TAG	UNP Q51162
B	21	THR	-	EXPRESSION TAG	UNP Q51162
B	22	ALA	-	EXPRESSION TAG	UNP Q51162
B	23	ALA	-	EXPRESSION TAG	UNP Q51162
B	24	ALA	-	EXPRESSION TAG	UNP Q51162
B	25	LYS	-	EXPRESSION TAG	UNP Q51162
B	26	PHE	-	EXPRESSION TAG	UNP Q51162
B	27	GLU	-	EXPRESSION TAG	UNP Q51162
B	28	ARG	-	EXPRESSION TAG	UNP Q51162
B	29	GLN	-	EXPRESSION TAG	UNP Q51162
B	30	HIS	-	EXPRESSION TAG	UNP Q51162
B	31	MET	-	EXPRESSION TAG	UNP Q51162
B	32	ASP	-	EXPRESSION TAG	UNP Q51162
B	33	SER	-	EXPRESSION TAG	UNP Q51162
B	34	PRO	-	EXPRESSION TAG	UNP Q51162
B	35	ASP	-	EXPRESSION TAG	UNP Q51162
B	36	LEU	-	EXPRESSION TAG	UNP Q51162
B	37	GLY	-	EXPRESSION TAG	UNP Q51162
B	38	THR	-	EXPRESSION TAG	UNP Q51162
B	39	ASP	-	EXPRESSION TAG	UNP Q51162
B	40	ASP	-	EXPRESSION TAG	UNP Q51162
B	41	ASP	-	EXPRESSION TAG	UNP Q51162
B	42	ASP	-	EXPRESSION TAG	UNP Q51162
B	43	LYS	-	EXPRESSION TAG	UNP Q51162
B	44	MET	-	EXPRESSION TAG	UNP Q51162
B	197	ASN	GLU	CONFLICT	UNP Q51162
B	446	ILE	VAL	CONFLICT	UNP Q51162
C	1	MET	-	EXPRESSION TAG	UNP Q51162
C	2	HIS	-	EXPRESSION TAG	UNP Q51162
C	3	HIS	-	EXPRESSION TAG	UNP Q51162
C	4	HIS	-	EXPRESSION TAG	UNP Q51162
C	5	HIS	-	EXPRESSION TAG	UNP Q51162
C	6	HIS	-	EXPRESSION TAG	UNP Q51162
C	7	HIS	-	EXPRESSION TAG	UNP Q51162
C	8	SER	-	EXPRESSION TAG	UNP Q51162
C	9	SER	-	EXPRESSION TAG	UNP Q51162
C	10	GLY	-	EXPRESSION TAG	UNP Q51162
C	11	LEU	-	EXPRESSION TAG	UNP Q51162
C	12	VAL	-	EXPRESSION TAG	UNP Q51162
C	13	PRO	-	EXPRESSION TAG	UNP Q51162
C	14	ARG	-	EXPRESSION TAG	UNP Q51162
C	15	GLY	-	EXPRESSION TAG	UNP Q51162

*Continued on next page...*

*Continued from previous page...*

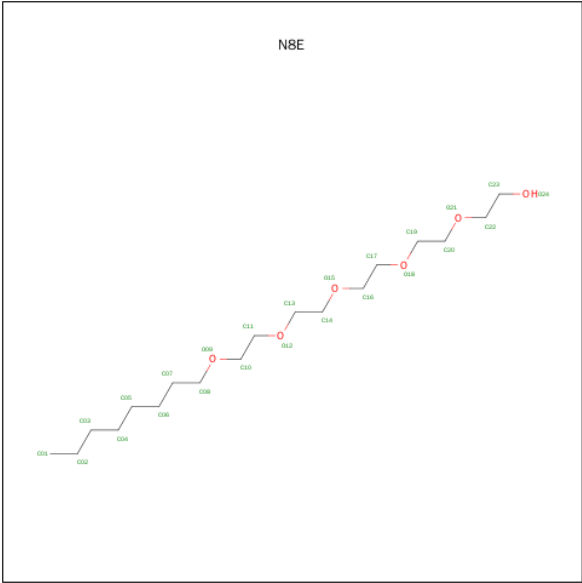
Chain	Residue	Modelled	Actual	Comment	Reference
C	16	SER	-	EXPRESSION TAG	UNP Q51162
C	17	GLY	-	EXPRESSION TAG	UNP Q51162
C	18	MET	-	EXPRESSION TAG	UNP Q51162
C	19	LYS	-	EXPRESSION TAG	UNP Q51162
C	20	GLU	-	EXPRESSION TAG	UNP Q51162
C	21	THR	-	EXPRESSION TAG	UNP Q51162
C	22	ALA	-	EXPRESSION TAG	UNP Q51162
C	23	ALA	-	EXPRESSION TAG	UNP Q51162
C	24	ALA	-	EXPRESSION TAG	UNP Q51162
C	25	LYS	-	EXPRESSION TAG	UNP Q51162
C	26	PHE	-	EXPRESSION TAG	UNP Q51162
C	27	GLU	-	EXPRESSION TAG	UNP Q51162
C	28	ARG	-	EXPRESSION TAG	UNP Q51162
C	29	GLN	-	EXPRESSION TAG	UNP Q51162
C	30	HIS	-	EXPRESSION TAG	UNP Q51162
C	31	MET	-	EXPRESSION TAG	UNP Q51162
C	32	ASP	-	EXPRESSION TAG	UNP Q51162
C	33	SER	-	EXPRESSION TAG	UNP Q51162
C	34	PRO	-	EXPRESSION TAG	UNP Q51162
C	35	ASP	-	EXPRESSION TAG	UNP Q51162
C	36	LEU	-	EXPRESSION TAG	UNP Q51162
C	37	GLY	-	EXPRESSION TAG	UNP Q51162
C	38	THR	-	EXPRESSION TAG	UNP Q51162
C	39	ASP	-	EXPRESSION TAG	UNP Q51162
C	40	ASP	-	EXPRESSION TAG	UNP Q51162
C	41	ASP	-	EXPRESSION TAG	UNP Q51162
C	42	ASP	-	EXPRESSION TAG	UNP Q51162
C	43	LYS	-	EXPRESSION TAG	UNP Q51162
C	44	MET	-	EXPRESSION TAG	UNP Q51162
C	197	ASN	GLU	CONFLICT	UNP Q51162
C	446	ILE	VAL	CONFLICT	UNP Q51162

- Molecule 2 is GLUTAMIC ACID (three-letter code: GLU) (formula: C<sub>5</sub>H<sub>9</sub>NO<sub>4</sub>).



Mol	Chain	Residues	Atoms				ZeroOcc	AltConf
2	A	1	Total	C	N	O	0	0
			10	5	1	4		

- Molecule 3 is 3,6,9,12,15-PENTAOXATRICOSAN-1-OL (three-letter code: N8E) (formula: C<sub>18</sub>H<sub>38</sub>O<sub>6</sub>).



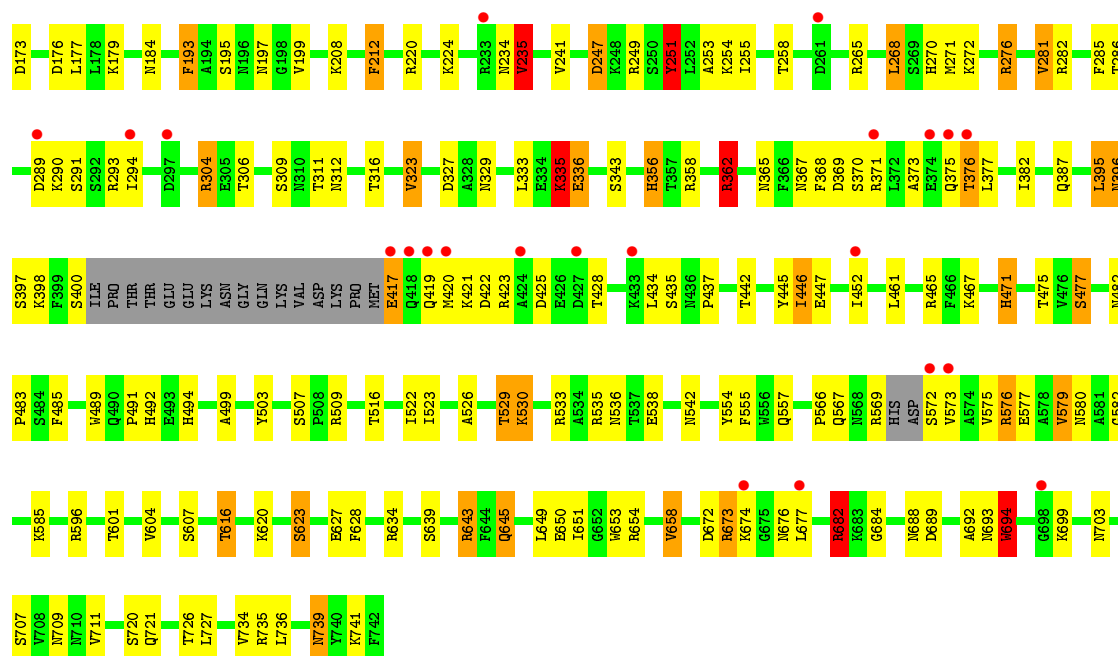
Mol	Chain	Residues	Atoms			ZeroOcc	AltConf
3	A	1	Total	C	O	0	0
			24	18	6		
3	B	1	Total	C	O	0	0
			24	18	6		

- Molecule 4 is water.

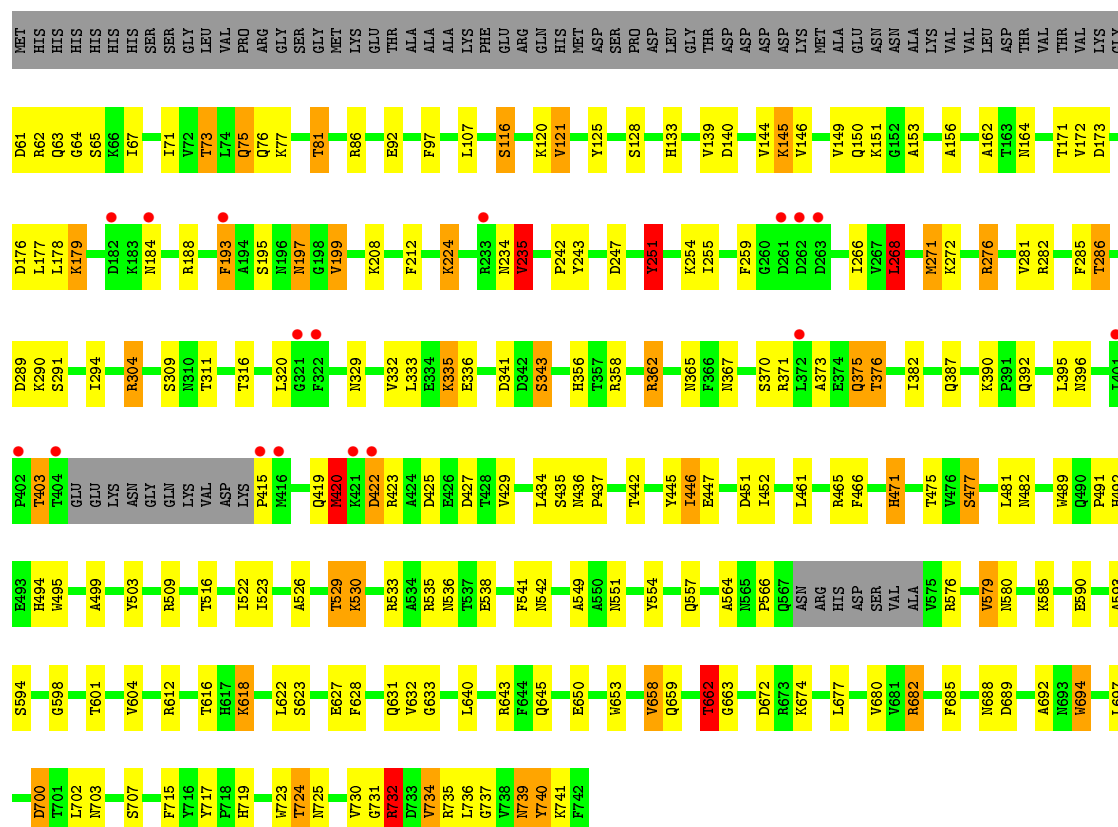
Mol	Chain	Residues	Atoms		ZeroOcc	AltConf
4	A	133	Total 133	O 133	0	0
4	B	80	Total 80	O 80	0	0
4	C	115	Total 115	O 115	0	0







• Molecule 1: FE-REGULATED PROTEIN B



## 4 Data and refinement statistics

Property	Value	Source
Space group	P 21 21 21	Depositor
Cell constants a, b, c, $\alpha$ , $\beta$ , $\gamma$	85.32Å 104.62Å 269.10Å 90.00° 90.00° 90.00°	Depositor
Resolution (Å)	134.55 – 2.40 48.76 – 2.40	Depositor EDS
% Data completeness (in resolution range)	90.4 (134.55-2.40) 90.5 (48.76-2.40)	Depositor EDS
$R_{merge}$	0.11	Depositor
$R_{sym}$	(Not available)	Depositor
$\langle I/\sigma(I) \rangle$ <sup>1</sup>	2.09 (at 2.39Å)	Xtriage
Refinement program	REFMAC 5.5.0109	Depositor
R, $R_{free}$	0.242 , 0.296 0.242 , 0.294	Depositor DCC
$R_{free}$ test set	4316 reflections (5.29%)	DCC
Wilson B-factor (Å <sup>2</sup> )	24.4	Xtriage
Anisotropy	0.442	Xtriage
Bulk solvent $k_{sol}$ (e/Å <sup>3</sup> ), $B_{sol}$ (Å <sup>2</sup> )	0.33 , 32.2	EDS
Estimated twinning fraction	No twinning to report.	Xtriage
L-test for twinning <sup>2</sup>	$\langle  L  \rangle = 0.49$ , $\langle L^2 \rangle = 0.32$	Xtriage
Outliers	0 of 86235 reflections	Xtriage
$F_o, F_c$ correlation	0.90	EDS
Total number of atoms	15985	wwPDB-VP
Average B, all atoms (Å <sup>2</sup> )	22.0	wwPDB-VP

Xtriage's analysis on translational NCS is as follows: *The largest off-origin peak in the Patterson function is 2.69% of the height of the origin peak. No significant pseudotranslation is detected.*

<sup>1</sup> Intensities estimated from amplitudes.

<sup>2</sup> Theoretical values of  $\langle |L| \rangle$ ,  $\langle L^2 \rangle$  for acentric reflections are 0.5, 0.375 respectively for untwinned datasets, and 0.333, 0.2 for perfectly twinned datasets.

## 5 Model quality ⓘ

### 5.1 Standard geometry ⓘ

Bond lengths and bond angles in the following residue types are not validated in this section: N8E

The Z score for a bond length (or angle) is the number of standard deviations the observed value is removed from the expected value. A bond length (or angle) with  $|Z| > 5$  is considered an outlier worth inspection. RMSZ is the root-mean-square of all Z scores of the bond lengths (or angles).

Mol	Chain	Bond lengths		Bond angles	
		RMSZ	$\# Z  > 5$	RMSZ	$\# Z  > 5$
1	A	1.24	28/5286 (0.5%)	1.16	36/7135 (0.5%)
1	B	1.17	27/5316 (0.5%)	1.08	27/7173 (0.4%)
1	C	1.23	27/5321 (0.5%)	1.18	43/7182 (0.6%)
All	All	1.21	82/15923 (0.5%)	1.14	106/21490 (0.5%)

Chiral center outliers are detected by calculating the chiral volume of a chiral center and verifying if the center is modelled as a planar moiety or with the opposite hand. A planarity outlier is detected by checking planarity of atoms in a peptide group, atoms in a mainchain group or atoms of a sidechain that are expected to be planar.

Mol	Chain	#Chirality outliers	#Planarity outliers
1	A	0	1
1	B	0	1
1	C	0	1
All	All	0	3

The worst 5 of 82 bond length outliers are listed below:

Mol	Chain	Res	Type	Atoms	Z	Observed(Å)	Ideal(Å)
1	C	193	PHE	CB-CG	-16.20	1.23	1.51
1	A	212	PHE	CG-CD1	-15.03	1.16	1.38
1	A	212	PHE	CB-CG	-14.36	1.26	1.51
1	A	212	PHE	CE2-CZ	-12.92	1.12	1.37
1	C	193	PHE	CE1-CZ	-12.31	1.14	1.37

The worst 5 of 106 bond angle outliers are listed below:

Mol	Chain	Res	Type	Atoms	Z	Observed(°)	Ideal(°)
1	A	304	ARG	NE-CZ-NH2	20.36	130.48	120.30
1	B	362	ARG	NE-CZ-NH2	16.90	128.75	120.30

*Continued on next page...*

*Continued from previous page...*

Mol	Chain	Res	Type	Atoms	Z	Observed(°)	Ideal(°)
1	A	304	ARG	NE-CZ-NH1	-15.77	112.42	120.30
1	A	358	ARG	NE-CZ-NH1	14.11	127.35	120.30
1	C	193	PHE	CB-CG-CD2	12.50	129.55	120.80

There are no chirality outliers.

All (3) planarity outliers are listed below:

Mol	Chain	Res	Type	Group
1	A	395	LEU	Peptide
1	B	395	LEU	Peptide
1	C	395	LEU	Peptide

## 5.2 Too-close contacts

In the following table, the Non-H and H(model) columns list the number of non-hydrogen atoms and hydrogen atoms in the chain respectively. The H(added) column lists the number of hydrogen atoms added and optimized by MolProbity. The Clashes column lists the number of clashes within the asymmetric unit, whereas Symm-Clashes lists symmetry related clashes.

Mol	Chain	Non-H	H(model)	H(added)	Clashes	Symm-Clashes
1	A	5178	0	5017	165	0
1	B	5209	0	5045	151	0
1	C	5212	0	5053	158	0
2	A	10	0	5	1	0
3	A	24	0	38	4	0
3	B	24	0	38	14	0
4	A	133	0	0	12	0
4	B	80	0	0	7	0
4	C	115	0	0	10	0
All	All	15985	0	15196	445	0

The all-atom clashscore is defined as the number of clashes found per 1000 atoms (including hydrogen atoms). The all-atom clashscore for this structure is 14.

The worst 5 of 445 close contacts within the same asymmetric unit are listed below, sorted by their clash magnitude.

Atom-1	Atom-2	Interatomic distance (Å)	Clash overlap (Å)
1:A:209:GLU:OE1	1:C:740:TYR:CE1	1.90	1.24
1:A:285:PHE:CB	1:A:294:ILE:HD11	1.75	1.16

*Continued on next page...*

*Continued from previous page...*

Atom-1	Atom-2	Interatomic distance (Å)	Clash overlap (Å)
1:A:209:GLU:OE1	1:C:740:TYR:CZ	1.97	1.15
1:C:732:ARG:HH11	1:C:732:ARG:CG	1.62	1.08
1:B:285:PHE:CB	1:B:294:ILE:HD11	1.83	1.07

There are no symmetry-related clashes.

## 5.3 Torsion angles [i](#)

### 5.3.1 Protein backbone [i](#)

In the following table, the Percentiles column shows the percent Ramachandran outliers of the chain as a percentile score with respect to all X-ray entries followed by that with respect to entries of similar resolution.

The Analysed column shows the number of residues for which the backbone conformation was analysed, and the total number of residues.

Mol	Chain	Analysed	Favoured	Allowed	Outliers	Percentiles	
1	A	653/742 (88%)	626 (96%)	23 (4%)	4 (1%)	30	43
1	B	659/742 (89%)	629 (95%)	24 (4%)	6 (1%)	21	30
1	C	659/742 (89%)	623 (94%)	30 (5%)	6 (1%)	21	30
All	All	1971/2226 (88%)	1878 (95%)	77 (4%)	16 (1%)	24	35

5 of 16 Ramachandran outliers are listed below:

Mol	Chain	Res	Type
1	A	235	VAL
1	A	396	ASN
1	A	724	THR
1	B	235	VAL
1	B	396	ASN

### 5.3.2 Protein sidechains [i](#)

In the following table, the Percentiles column shows the percent sidechain outliers of the chain as a percentile score with respect to all X-ray entries followed by that with respect to entries of similar resolution.

The Analysed column shows the number of residues for which the sidechain conformation was analysed, and the total number of residues.

Mol	Chain	Analysed	Rotameric	Outliers	Percentiles	
1	A	542/612 (89%)	482 (89%)	60 (11%)	8	10
1	B	544/612 (89%)	487 (90%)	57 (10%)	8	12
1	C	546/612 (89%)	492 (90%)	54 (10%)	10	14
All	All	1632/1836 (89%)	1461 (90%)	171 (10%)	8	12

5 of 171 residues with a non-rotameric sidechain are listed below:

Mol	Chain	Res	Type
1	B	316	THR
1	B	465	ARG
1	C	585	LYS
1	B	327	ASP
1	B	382	ILE

Some sidechains can be flipped to improve hydrogen bonding and reduce clashes. 5 of 52 such sidechains are listed below:

Mol	Chain	Res	Type
1	B	329	ASN
1	B	492	HIS
1	C	645	GLN
1	B	356	HIS
1	B	396	ASN

### 5.3.3 RNA [i](#)

There are no RNA molecules in this entry.

## 5.4 Non-standard residues in protein, DNA, RNA chains [i](#)

There are no non-standard protein/DNA/RNA residues in this entry.

## 5.5 Carbohydrates [i](#)

There are no carbohydrates in this entry.

## 5.6 Ligand geometry [i](#)

3 ligands are modelled in this entry.

In the following table, the Counts columns list the number of bonds (or angles) for which Mogul statistics could be retrieved, the number of bonds (or angles) that are observed in the model and the number of bonds (or angles) that are defined in the chemical component dictionary. The Link column lists molecule types, if any, to which the group is linked. The Z score for a bond length (or angle) is the number of standard deviations the observed value is removed from the expected value. A bond length (or angle) with  $|Z| > 2$  is considered an outlier worth inspection. RMSZ is the root-mean-square of all Z scores of the bond lengths (or angles).

Mol	Type	Chain	Res	Link	Bond lengths			Bond angles		
					Counts	RMSZ	$\# Z  > 2$	Counts	RMSZ	$\# Z  > 2$
3	N8E	A	1743	-	23,23,23	0.90	0	22,22,22	1.02	0
2	GLU	A	1744	-	3,9,9	0.29	0	2,11,11	0.57	0
3	N8E	B	1743	-	23,23,23	0.46	0	22,22,22	0.69	0

In the following table, the Chirals column lists the number of chiral outliers, the number of chiral centers analysed, the number of these observed in the model and the number defined in the chemical component dictionary. Similar counts are reported in the Torsion and Rings columns. '-' means no outliers of that kind were identified.

Mol	Type	Chain	Res	Link	Chirals	Torsions	Rings
3	N8E	A	1743	-	-	0/21/21/21	0/0/0/0
2	GLU	A	1744	-	-	0/3/9/9	0/0/0/0
3	N8E	B	1743	-	-	0/21/21/21	0/0/0/0

There are no bond length outliers.

There are no bond angle outliers.

There are no chirality outliers.

There are no torsion outliers.

There are no ring outliers.

3 monomers are involved in 19 short contacts:

Mol	Chain	Res	Type	Clashes	Symm-Clashes
3	A	1743	N8E	4	0
2	A	1744	GLU	1	0
3	B	1743	N8E	14	0

## 5.7 Other polymers

There are no such residues in this entry.



## 5.8 Polymer linkage issues ⓘ

There are no chain breaks in this entry.

## 6 Fit of model and data [i](#)

### 6.1 Protein, DNA and RNA chains [i](#)

In the following table, the column labelled ‘#RSRZ> 2’ contains the number (and percentage) of RSRZ outliers, followed by percent RSRZ outliers for the chain as percentile scores relative to all X-ray entries and entries of similar resolution. The OWAB column contains the minimum, median, 95<sup>th</sup> percentile and maximum values of the occupancy-weighted average B-factor per residue. The column labelled ‘Q< 0.9’ lists the number of (and percentage) of residues with an average occupancy less than 0.9.

Mol	Chain	Analysed	<RSRZ>	#RSRZ>2	OWAB(Å <sup>2</sup> )	Q<0.9
1	A	661/742 (89%)	-0.16	6 (0%) 85 85	5, 20, 41, 60	0
1	B	665/742 (89%)	-0.13	22 (3%) 50 50	7, 22, 47, 62	0
1	C	665/742 (89%)	-0.06	17 (2%) 59 58	5, 20, 46, 62	0
All	All	1991/2226 (89%)	-0.12	45 (2%) 64 63	5, 20, 45, 62	0

The worst 5 of 45 RSRZ outliers are listed below:

Mol	Chain	Res	Type	RSRZ
1	B	677	LEU	4.2
1	C	261	ASP	4.1
1	C	322	PHE	4.0
1	C	416	MET	3.7
1	B	420	MET	3.7

### 6.2 Non-standard residues in protein, DNA, RNA chains [i](#)

There are no non-standard protein/DNA/RNA residues in this entry.

### 6.3 Carbohydrates [i](#)

There are no carbohydrates in this entry.

### 6.4 Ligands [i](#)

In the following table, the Atoms column lists the number of modelled atoms in the group and the number defined in the chemical component dictionary. LLDF column lists the quality of electron density of the group with respect to its neighbouring residues in protein, DNA or RNA chains. The B-factors column lists the minimum, median, 95<sup>th</sup> percentile and maximum values of B factors

of atoms in the group. The column labelled 'Q< 0.9' lists the number of atoms with occupancy less than 0.9.

Mol	Type	Chain	Res	Atoms	RSCC	RSR	LLDF	B-factors( $\text{\AA}^2$ )	Q<0.9
2	GLU	A	1744	10/10	0.93	0.21	1.64	15,20,22,22	0
3	N8E	B	1743	24/24	0.89	0.18	0.60	12,20,35,38	0
3	N8E	A	1743	24/24	0.89	0.16	0.38	12,19,38,40	0

## 6.5 Other polymers [i](#)

There are no such residues in this entry.