



Full wwPDB X-ray Structure Validation Report ⓘ

Jan 31, 2016 – 06:23 PM GMT

PDB ID : 1AJK
Title : CIRCULARLY PERMUTED (1 - 3 , 1 - 4) - B E T A - D - G L U C A N 4-
GLUCANOHYDROLASE CPA16M-84
Authors : Ay, J.; Heinemann, U.
Deposited on : 1997-05-06
Resolution : 1.80 Å(reported)

This is a Full wwPDB X-ray Structure Validation Report for a publicly released PDB entry.
We welcome your comments at validation@mail.wwpdb.org
A user guide is available at
<http://wwpdb.org/validation/2016/XrayValidationReportHelp>
with specific help available everywhere you see the ⓘ symbol.

The following versions of software and data (see [references ⓘ](#)) were used in the production of this report:

MolProbity : 4.02b-467
Mogul : 1.7 (RC4), CSD as536be (2015)
Xtriage (Phenix) : 1.9-1692
EDS : rb-20026688
Percentile statistics : 20151230.v01 (using entries in the PDB archive December 30th 2015)
Refmac : 5.8.0135
CCP4 : 6.5.0
Ideal geometry (proteins) : Engh & Huber (2001)
Ideal geometry (DNA, RNA) : Parkinson et al. (1996)
Validation Pipeline (wwPDB-VP) : trunk26865

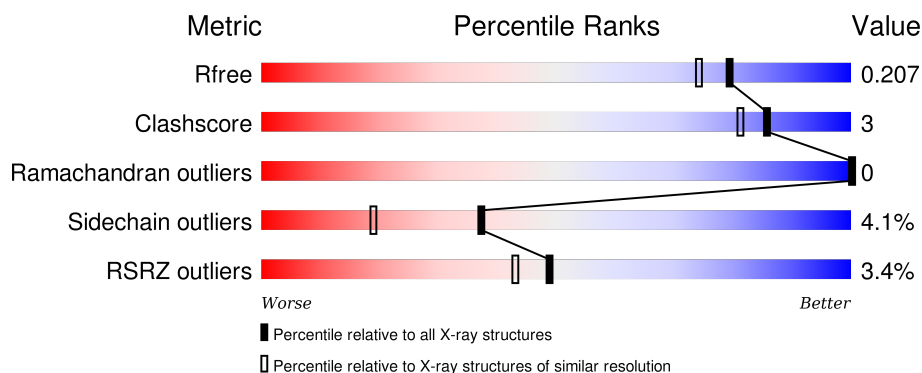
1 Overall quality at a glance ⓘ

The following experimental techniques were used to determine the structure:

X-RAY DIFFRACTION

The reported resolution of this entry is 1.80 Å.

Percentile scores (ranging between 0-100) for global validation metrics of the entry are shown in the following graphic. The table shows the number of entries on which the scores are based.



Metric	Whole archive (#Entries)	Similar resolution (#Entries, resolution range(Å))
R_{free}	91344	4533 (1.80-1.80)
Clashscore	102246	5383 (1.80-1.80)
Ramachandran outliers	100387	5320 (1.80-1.80)
Sidechain outliers	100360	5319 (1.80-1.80)
RSRZ outliers	91569	4547 (1.80-1.80)

The table below summarises the geometric issues observed across the polymeric chains and their fit to the electron density. The red, orange, yellow and green segments on the lower bar indicate the fraction of residues that contain outliers for ≥ 3 , 2, 1 and 0 types of geometric quality criteria. A grey segment represents the fraction of residues that are not modelled. The numeric value for each fraction is indicated below the corresponding segment, with a dot representing fractions $\leq 5\%$. The upper red bar (where present) indicates the fraction of residues that have poor fit to the electron density. The numeric value is given above the bar.

Mol	Chain	Length	Quality of chain
1	A	214	<div> <div>3%</div> <div>83%</div> <div>14%</div> <div>••</div> </div>
1	B	214	<div> <div>3%</div> <div>79%</div> <div>12%</div> <div>• 6%</div> </div>

The following table lists non-polymeric compounds, carbohydrate monomers and non-standard residues in protein, DNA, RNA chains that are outliers for geometric or electron-density-fit criteria:

Mol	Type	Chain	Res	Chirality	Geometry	Clashes	Electron density
4	EPE	A	309[A]	-	-	-	X
4	EPE	A	309[B]	-	-	-	X
4	EPE	B	216	-	-	-	X

2 Entry composition [i](#)

There are 5 unique types of molecules in this entry. The entry contains 3625 atoms, of which 0 are hydrogens and 0 are deuteriums.

In the tables below, the ZeroOcc column contains the number of atoms modelled with zero occupancy, the AltConf column contains the number of residues with at least one atom in alternate conformation and the Trace column contains the number of residues modelled with at most 2 atoms.

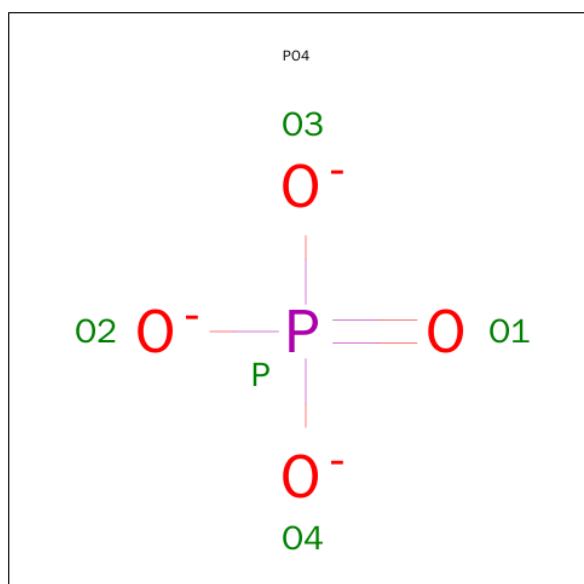
- Molecule 1 is a protein called CIRCULARLY PERMUTED (1-3,1-4)-BETA-D-GLUCAN 4-GLUCANOHYDROLASE.

Mol	Chain	Residues	Atoms					ZeroOcc	AltConf	Trace
1	A	212	Total	C	N	O	S	0	0	0
			1683	1082	271	325	5			
1	B	201	Total	C	N	O	S	0	0	0
			1601	1031	257	308	5			

- Molecule 2 is CALCIUM ION (three-letter code: CA) (formula: Ca).

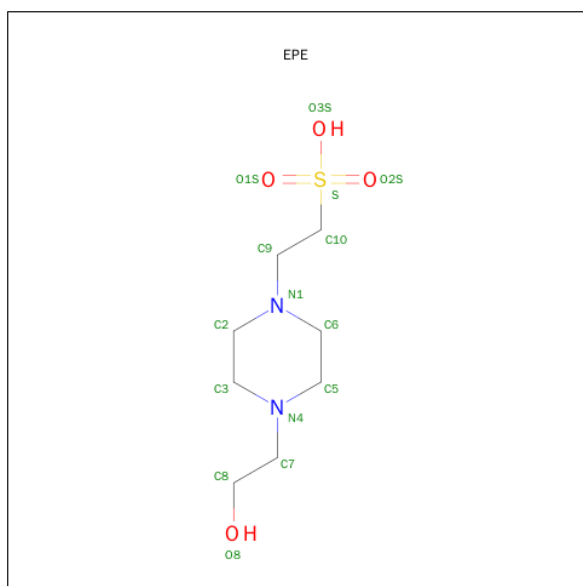
Mol	Chain	Residues	Atoms		ZeroOcc	AltConf
2	B	1	Total	Ca	0	0
			1	1		
2	A	1	Total	Ca	0	0
			1	1		

- Molecule 3 is PHOSPHATE ION (three-letter code: PO4) (formula: O₄P).



Mol	Chain	Residues	Atoms	ZeroOcc	AltConf
3	A	1	Total O P 5 4 1	0	0

- Molecule 4 is 4-(2-HYDROXYETHYL)-1-PIPERAZINE ETHANESULFONIC ACID (three-letter code: EPE) (formula: C₈H₁₈N₂O₄S).



Mol	Chain	Residues	Atoms	ZeroOcc	AltConf
4	A	1	Total C N O S 16 8 2 5 1	0	1
4	B	1	Total C N O S 15 8 2 4 1	0	0

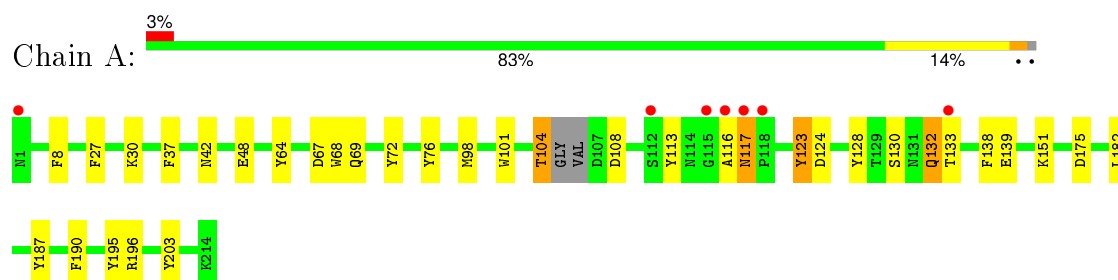
- Molecule 5 is water.

Mol	Chain	Residues	Atoms	ZeroOcc	AltConf
5	A	197	Total O 197 197	0	0
5	B	106	Total O 106 106	0	0

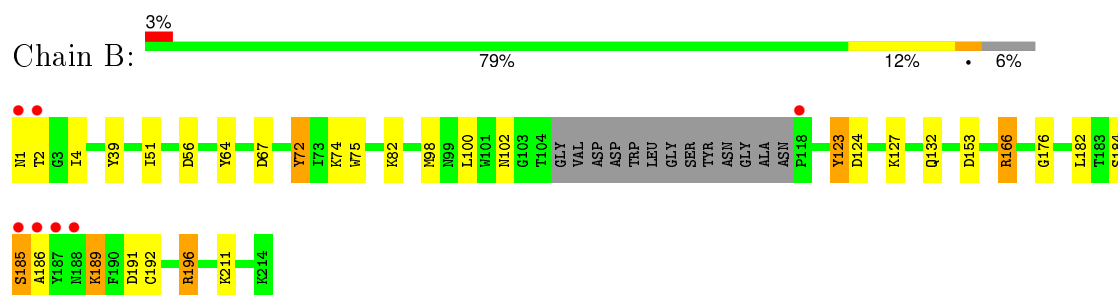
3 Residue-property plots [i](#)

These plots are drawn for all protein, RNA and DNA chains in the entry. The first graphic for a chain summarises the proportions of errors displayed in the second graphic. The second graphic shows the sequence view annotated by issues in geometry and electron density. Residues are color-coded according to the number of geometric quality criteria for which they contain at least one outlier: green = 0, yellow = 1, orange = 2 and red = 3 or more. A red dot above a residue indicates a poor fit to the electron density ($RSRZ > 2$). Stretches of 2 or more consecutive residues without any outlier are shown as a green connector. Residues present in the sample, but not in the model, are shown in grey.

- Molecule 1: CIRCULARLY PERMUTED (1-3,1-4)-BETA-D-GLUCAN 4-GLUCANOHYDROLASE



- Molecule 1: CIRCULARLY PERMUTED (1-3,1-4)-BETA-D-GLUCAN 4-GLUCANOHYDROLASE



4 Data and refinement statistics

Property	Value	Source
Space group	P 1 21 1	Depositor
Cell constants a, b, c, α , β , γ	45.45Å 65.82Å 69.61Å 90.00° 106.87° 90.00°	Depositor
Resolution (Å)	33.33 – 1.80 33.31 – 1.75	Depositor EDS
% Data completeness (in resolution range)	98.3 (33.33-1.80) 97.2 (33.31-1.75)	Depositor EDS
R_{merge}	0.06	Depositor
R_{sym}	0.06	Depositor
$\langle I/\sigma(I) \rangle$ ¹	2.84 (at 1.75Å)	Xtriage
Refinement program	REFMAC	Depositor
R, R_{free}	0.168 , 0.219 0.166 , 0.207	Depositor DCC
R_{free} test set	1784 reflections (5.24%)	DCC
Wilson B-factor (Å ²)	17.4	Xtriage
Anisotropy	0.165	Xtriage
Bulk solvent k_{sol} (e/Å ³), B_{sol} (Å ²)	0.33 , 50.3	EDS
Estimated twinning fraction	0.024 for h,-k,-h-l	Xtriage
L-test for twinning ²	$\langle L \rangle = 0.50$, $\langle L^2 \rangle = 0.33$	Xtriage
Outliers	0 of 38672 reflections	Xtriage
F_o, F_c correlation	0.95	EDS
Total number of atoms	3625	wwPDB-VP
Average B, all atoms (Å ²)	20.0	wwPDB-VP

Xtriage's analysis on translational NCS is as follows: *The largest off-origin peak in the Patterson function is 7.17% of the height of the origin peak. No significant pseudotranslation is detected.*

¹Intensities estimated from amplitudes.

²Theoretical values of $\langle |L| \rangle$, $\langle L^2 \rangle$ for acentric reflections are 0.5, 0.375 respectively for untwinned datasets, and 0.333, 0.2 for perfectly twinned datasets.

5 Model quality ⓘ

5.1 Standard geometry ⓘ

Bond lengths and bond angles in the following residue types are not validated in this section: CA, EPE, PO4

The Z score for a bond length (or angle) is the number of standard deviations the observed value is removed from the expected value. A bond length (or angle) with $|Z| > 5$ is considered an outlier worth inspection. RMSZ is the root-mean-square of all Z scores of the bond lengths (or angles).

Mol	Chain	Bond lengths		Bond angles	
		RMSZ	# Z >5	RMSZ	# Z >5
1	A	1.04	0/1738	1.71	31/2362 (1.3%)
1	B	0.84	0/1653	1.49	15/2244 (0.7%)
All	All	0.95	0/3391	1.61	46/4606 (1.0%)

There are no bond length outliers.

All (46) bond angle outliers are listed below:

Mol	Chain	Res	Type	Atoms	Z	Observed(°)	Ideal(°)
1	A	64	TYR	CB-CG-CD2	-11.87	113.88	121.00
1	A	203	TYR	CB-CG-CD1	10.77	127.46	121.00
1	A	8	PHE	CB-CG-CD2	-9.59	114.09	120.80
1	A	124	ASP	CB-CG-OD2	8.59	126.03	118.30
1	A	72	TYR	CD1-CE1-CZ	-8.56	112.09	119.80
1	A	64	TYR	CB-CG-CD1	8.54	126.12	121.00
1	B	124	ASP	CB-CG-OD2	8.51	125.95	118.30
1	A	72	TYR	CG-CD1-CE1	8.44	128.05	121.30
1	B	153	ASP	CB-CG-OD2	-7.86	111.22	118.30
1	B	56	ASP	CB-CG-OD1	7.30	124.87	118.30
1	A	190	PHE	CB-CG-CD1	-7.05	115.86	120.80
1	A	76	TYR	CB-CG-CD1	-6.96	116.83	121.00
1	A	139	GLU	OE1-CD-OE2	-6.88	115.04	123.30
1	A	48	GLU	OE1-CD-OE2	-6.68	115.29	123.30
1	B	72	TYR	CB-CG-CD1	-6.55	117.07	121.00
1	A	67	ASP	CB-CG-OD1	6.48	124.13	118.30
1	A	72	TYR	CB-CG-CD1	6.46	124.88	121.00
1	A	101	TRP	CB-CG-CD2	6.30	134.79	126.60
1	B	72	TYR	CB-CG-CD2	6.22	124.73	121.00
1	B	176	GLY	CA-C-N	6.20	130.84	117.20
1	A	195	TYR	CB-CG-CD2	-6.08	117.35	121.00
1	B	153	ASP	CB-CG-OD1	5.96	123.66	118.30

Continued on next page...

Continued from previous page...

Mol	Chain	Res	Type	Atoms	Z	Observed(°)	Ideal(°)
1	A	132	GLN	CB-CA-C	5.94	122.29	110.40
1	A	101	TRP	CB-CG-CD1	-5.88	119.36	127.00
1	A	72	TYR	CG-CD2-CE2	-5.84	116.62	121.30
1	A	37	PHE	CB-CG-CD2	-5.64	116.85	120.80
1	A	123	TYR	CB-CG-CD2	-5.62	117.63	121.00
1	B	166	ARG	NE-CZ-NH2	-5.59	117.51	120.30
1	A	117	ASN	CB-CA-C	5.54	121.47	110.40
1	A	68	TRP	CB-CG-CD1	5.48	134.13	127.00
1	A	68	TRP	CB-CG-CD2	-5.42	119.55	126.60
1	B	39	TYR	CG-CD2-CE2	-5.34	117.03	121.30
1	A	69	GLN	O-C-N	-5.34	110.96	121.10
1	A	187	TYR	CB-CG-CD2	-5.31	117.81	121.00
1	A	124	ASP	OD1-CG-OD2	-5.28	113.27	123.30
1	B	67	ASP	CB-CG-OD2	-5.25	113.58	118.30
1	A	175	ASP	CB-CG-OD1	5.23	123.01	118.30
1	B	176	GLY	O-C-N	-5.21	114.37	122.70
1	A	27	PHE	CB-CG-CD1	-5.16	117.19	120.80
1	B	64	TYR	CZ-CE2-CD2	-5.16	115.16	119.80
1	B	75	TRP	CA-CB-CG	5.12	123.43	113.70
1	B	123	TYR	CB-CG-CD1	5.10	124.06	121.00
1	A	113	TYR	CB-CG-CD1	-5.06	117.97	121.00
1	A	182	LEU	O-C-N	5.04	130.76	122.70
1	B	102	ASN	CB-CG-OD1	5.01	131.63	121.60
1	A	138	PHE	CB-CG-CD1	-5.00	117.30	120.80

There are no chirality outliers.

There are no planarity outliers.

5.2 Too-close contacts ⓘ

In the following table, the Non-H and H(model) columns list the number of non-hydrogen atoms and hydrogen atoms in the chain respectively. The H(added) column lists the number of hydrogen atoms added and optimized by MolProbity. The Clashes column lists the number of clashes within the asymmetric unit, whereas Symm-Clashes lists symmetry related clashes.

Mol	Chain	Non-H	H(model)	H(added)	Clashes	Symm-Clashes
1	A	1683	0	1542	7	0
1	B	1601	0	1479	11	0
2	A	1	0	0	0	0
2	B	1	0	0	0	0
3	A	5	0	0	0	0

Continued on next page...

Continued from previous page...

Mol	Chain	Non-H	H(model)	H(added)	Clashes	Symm-Clashes
4	A	16	0	6	1	0
4	B	15	0	18	0	0
5	A	197	0	0	3	0
5	B	106	0	0	1	0
All	All	3625	0	3045	18	0

The all-atom clashscore is defined as the number of clashes found per 1000 atoms (including hydrogen atoms). The all-atom clashscore for this structure is 3.

All (18) close contacts within the same asymmetric unit are listed below, sorted by their clash magnitude.

Atom-1	Atom-2	Interatomic distance (Å)	Clash overlap (Å)
1:A:104:THR:HG21	1:B:127:LYS:HE3	1.60	0.84
1:A:116:ALA:HB2	5:A:456:HOH:O	1.80	0.81
1:A:116:ALA:HB3	5:A:401:HOH:O	1.94	0.67
1:B:184:SER:O	1:B:185:SER:HB2	1.95	0.67
1:B:98:MET:HG2	1:B:123:TYR:CE2	2.33	0.64
1:A:151:LYS:NZ	5:A:423:HOH:O	2.39	0.50
1:B:72:TYR:CE1	1:B:74:LYS:HE3	2.47	0.50
1:B:1:ASN:HB3	5:B:243:HOH:O	2.11	0.50
1:B:186:ALA:HB3	1:B:189:LYS:HB2	1.95	0.48
1:B:166:ARG:HG2	1:B:191:ASP:HB3	1.96	0.47
1:B:100:LEU:O	1:B:192:CYS:HB2	2.18	0.43
1:A:128:TYR:CE2	1:A:130:SER:HB2	2.54	0.43
1:B:51:ILE:HD13	1:B:82:LYS:HB3	2.01	0.43
1:B:196:ARG:HD3	1:B:196:ARG:HH11	1.72	0.42
1:A:98:MET:HG2	1:A:123:TYR:CE2	2.54	0.41
1:B:182:LEU:CD1	1:B:192:CYS:HB3	2.51	0.41
1:A:196:ARG:HD3	1:A:196:ARG:HH11	1.66	0.40

There are no symmetry-related clashes.

5.3 Torsion angles ⓘ

5.3.1 Protein backbone ⓘ

In the following table, the Percentiles column shows the percent Ramachandran outliers of the chain as a percentile score with respect to all X-ray entries followed by that with respect to entries of similar resolution.

The Analysed column shows the number of residues for which the backbone conformation was analysed, and the total number of residues.

Mol	Chain	Analysed	Favoured	Allowed	Outliers	Percentiles	
1	A	208/214 (97%)	202 (97%)	6 (3%)	0	100	100
1	B	197/214 (92%)	193 (98%)	4 (2%)	0	100	100
All	All	405/428 (95%)	395 (98%)	10 (2%)	0	100	100

There are no Ramachandran outliers to report.

5.3.2 Protein sidechains ⓘ

In the following table, the Percentiles column shows the percent sidechain outliers of the chain as a percentile score with respect to all X-ray entries followed by that with respect to entries of similar resolution.

The Analysed column shows the number of residues for which the sidechain conformation was analysed, and the total number of residues.

Mol	Chain	Analysed	Rotameric	Outliers	Percentiles	
1	A	174/176 (99%)	167 (96%)	7 (4%)	38	20
1	B	167/176 (95%)	160 (96%)	7 (4%)	36	18
All	All	341/352 (97%)	327 (96%)	14 (4%)	37	19

All (14) residues with a non-rotameric sidechain are listed below:

Mol	Chain	Res	Type
1	A	30	LYS
1	A	42	ASN
1	A	104	THR
1	A	108	ASP
1	A	117	ASN
1	A	132	GLN
1	A	133	THR
1	B	2	THR
1	B	4	ILE
1	B	132	GLN
1	B	185	SER
1	B	189	LYS
1	B	196	ARG
1	B	211	LYS

Some sidechains can be flipped to improve hydrogen bonding and reduce clashes. All (3) such sidechains are listed below:

Mol	Chain	Res	Type
1	A	42	ASN
1	A	88	ASN
1	B	16	HIS

5.3.3 RNA [i](#)

There are no RNA molecules in this entry.

5.4 Non-standard residues in protein, DNA, RNA chains [i](#)

There are no non-standard protein/DNA/RNA residues in this entry.

5.5 Carbohydrates [i](#)

There are no carbohydrates in this entry.

5.6 Ligand geometry [i](#)

Of 6 ligands modelled in this entry, 2 are monoatomic - leaving 4 for Mogul analysis.

In the following table, the Counts columns list the number of bonds (or angles) for which Mogul statistics could be retrieved, the number of bonds (or angles) that are observed in the model and the number of bonds (or angles) that are defined in the chemical component dictionary. The Link column lists molecule types, if any, to which the group is linked. The Z score for a bond length (or angle) is the number of standard deviations the observed value is removed from the expected value. A bond length (or angle) with $|Z| > 2$ is considered an outlier worth inspection. RMSZ is the root-mean-square of all Z scores of the bond lengths (or angles).

Mol	Type	Chain	Res	Link	Bond lengths			Bond angles		
					Counts	RMSZ	$\# Z > 2$	Counts	RMSZ	$\# Z > 2$
3	PO4	A	308	-	4,4,4	1.52	1 (25%)	6,6,6	0.33	0
4	EPE	A	309[A]	-	14,15,15	2.25	1 (7%)	18,20,20	2.62	12 (66%)
4	EPE	A	309[B]	-	14,15,15	2.25	1 (7%)	18,20,20	2.62	12 (66%)
4	EPE	B	216	-	14,15,15	2.31	2 (14%)	18,20,20	2.45	7 (38%)

In the following table, the Chirals column lists the number of chiral outliers, the number of chiral centers analysed, the number of these observed in the model and the number defined in the chemical component dictionary. Similar counts are reported in the Torsion and Rings columns. '-' means

no outliers of that kind were identified.

Mol	Type	Chain	Res	Link	Chirals	Torsions	Rings
3	PO4	A	308	-	-	0/0/0/0	0/0/0/0
4	EPE	A	309[A]	-	-	0/9/19/19	0/1/1/1
4	EPE	A	309[B]	-	-	0/9/19/19	0/1/1/1
4	EPE	B	216	-	-	0/9/19/19	0/1/1/1

All (5) bond length outliers are listed below:

Mol	Chain	Res	Type	Atoms	Z	Observed(Å)	Ideal(Å)
4	B	216	EPE	C5-N4	2.29	1.53	1.46
3	A	308	PO4	P-O4	2.79	1.63	1.53
4	B	216	EPE	O3S-S	7.73	1.66	1.46
4	A	309[A]	EPE	O3S-S	7.87	1.66	1.46
4	A	309[B]	EPE	O3S-S	7.87	1.66	1.46

All (31) bond angle outliers are listed below:

Mol	Chain	Res	Type	Atoms	Z	Observed(°)	Ideal(°)
4	B	216	EPE	O3S-S-O1S	-4.34	101.51	111.61
4	A	309[A]	EPE	O3S-S-O1S	-4.09	102.08	111.61
4	A	309[B]	EPE	O3S-S-O1S	-4.09	102.08	111.61
4	A	309[A]	EPE	O1S-S-C10	-3.57	103.86	106.91
4	A	309[B]	EPE	O1S-S-C10	-3.57	103.86	106.91
4	B	216	EPE	O1S-S-C10	-3.47	103.94	106.91
4	A	309[A]	EPE	O3S-S-O2S	2.11	116.52	111.61
4	A	309[B]	EPE	O3S-S-O2S	2.11	116.52	111.61
4	B	216	EPE	O3S-S-O2S	2.17	116.66	111.61
4	A	309[A]	EPE	C9-N1-C6	2.17	116.84	111.27
4	A	309[B]	EPE	C9-N1-C6	2.17	116.84	111.27
4	A	309[A]	EPE	C7-N4-C5	2.21	116.93	111.27
4	A	309[B]	EPE	C7-N4-C5	2.21	116.93	111.27
4	A	309[A]	EPE	C2-C3-N4	2.26	114.68	110.63
4	A	309[B]	EPE	C2-C3-N4	2.26	114.68	110.63
4	A	309[A]	EPE	O2S-S-O1S	2.32	121.92	113.48
4	A	309[B]	EPE	O2S-S-O1S	2.32	121.92	113.48
4	A	309[A]	EPE	C7-N4-C3	2.43	117.49	111.27
4	A	309[B]	EPE	C7-N4-C3	2.43	117.49	111.27
4	A	309[A]	EPE	O2S-S-C10	2.43	108.98	106.91
4	A	309[B]	EPE	O2S-S-C10	2.43	108.98	106.91
4	B	216	EPE	O2S-S-O1S	2.59	122.93	113.48
4	A	309[A]	EPE	C5-C6-N1	2.60	115.28	110.63
4	A	309[B]	EPE	C5-C6-N1	2.60	115.28	110.63

Continued on next page...

Continued from previous page...

Mol	Chain	Res	Type	Atoms	Z	Observed(°)	Ideal(°)
4	B	216	EPE	C2-C3-N4	3.08	116.14	110.63
4	B	216	EPE	C3-C2-N1	3.98	117.75	110.63
4	A	309[A]	EPE	C6-N1-C2	4.63	118.93	108.90
4	A	309[B]	EPE	C6-N1-C2	4.63	118.93	108.90
4	A	309[A]	EPE	C3-C2-N1	5.10	119.77	110.63
4	A	309[B]	EPE	C3-C2-N1	5.10	119.77	110.63
4	B	216	EPE	C6-N1-C2	5.33	120.44	108.90

There are no chirality outliers.

There are no torsion outliers.

There are no ring outliers.

1 monomer is involved in 1 short contact:

Mol	Chain	Res	Type	Clashes	Symm-Clashes
4	A	309[A]	EPE	1	0

5.7 Other polymers [i](#)

There are no such residues in this entry.

5.8 Polymer linkage issues [i](#)

There are no chain breaks in this entry.

6 Fit of model and data [i](#)

6.1 Protein, DNA and RNA chains [i](#)

In the following table, the column labelled ‘#RSRZ> 2’ contains the number (and percentage) of RSRZ outliers, followed by percent RSRZ outliers for the chain as percentile scores relative to all X-ray entries and entries of similar resolution. The OWAB column contains the minimum, median, 95th percentile and maximum values of the occupancy-weighted average B-factor per residue. The column labelled ‘Q< 0.9’ lists the number of (and percentage) of residues with an average occupancy less than 0.9.

Mol	Chain	Analysed	<RSRZ>	#RSRZ>2	OWAB(Å ²)	Q<0.9
1	A	212/214 (99%)	-0.32	7 (3%) 50 44	9, 15, 36, 57	0
1	B	201/214 (93%)	-0.14	7 (3%) 48 42	12, 21, 39, 61	0
All	All	413/428 (96%)	-0.23	14 (3%) 49 43	9, 18, 38, 61	0

All (14) RSRZ outliers are listed below:

Mol	Chain	Res	Type	RSRZ
1	B	187	TYR	6.7
1	A	1	ASN	4.5
1	B	186	ALA	4.2
1	B	185	SER	4.1
1	A	116	ALA	3.7
1	B	1	ASN	3.2
1	A	117	ASN	2.9
1	B	188	ASN	2.9
1	B	118	PRO	2.8
1	A	133	THR	2.6
1	A	118	PRO	2.4
1	A	112	SER	2.4
1	B	2	THR	2.2
1	A	115	GLY	2.1

6.2 Non-standard residues in protein, DNA, RNA chains [i](#)

There are no non-standard protein/DNA/RNA residues in this entry.

6.3 Carbohydrates [i](#)

There are no carbohydrates in this entry.

6.4 Ligands [i](#)

In the following table, the Atoms column lists the number of modelled atoms in the group and the number defined in the chemical component dictionary. LLDF column lists the quality of electron density of the group with respect to its neighbouring residues in protein, DNA or RNA chains. The B-factors column lists the minimum, median, 95th percentile and maximum values of B factors of atoms in the group. The column labelled 'Q< 0.9' lists the number of atoms with occupancy less than 0.9.

Mol	Type	Chain	Res	Atoms	RSCC	RSR	LLDF	B-factors(Å ²)	Q<0.9
4	EPE	A	309[B]	15/15	0.88	0.13	7.61	16,30,44,44	1
4	EPE	A	309[A]	15/15	0.88	0.13	6.22	21,30,44,44	1
4	EPE	B	216	15/15	0.84	0.13	2.16	29,32,48,49	0
3	PO4	A	308	5/5	0.95	0.12	1.94	40,44,47,49	0
2	CA	A	215	1/1	1.00	0.09	0.12	11,11,11,11	0
2	CA	B	215	1/1	1.00	0.07	-0.84	15,15,15,15	0

6.5 Other polymers [i](#)

There are no such residues in this entry.