



Full wwPDB X-ray Structure Validation Report ⓘ

Feb 1, 2016 – 12:28 AM GMT

PDB ID : 2AK3
Title : THE THREE-DIMENSIONAL STRUCTURE OF THE COMPLEX BETWEEN MITOCHONDRIAL MATRIX ADENYLATE KINASE AND ITS SUBSTRATE AMP AT 1.85 ANGSTROMS RESOLUTION
Authors : Diederichs, K.; Schulz, G.E.
Deposited on : 1995-03-07
Resolution : 1.85 Å(reported)

This is a Full wwPDB X-ray Structure Validation Report for a publicly released PDB entry.
We welcome your comments at validation@mail.wwpdb.org
A user guide is available at
<http://wwpdb.org/validation/2016/XrayValidationReportHelp>
with specific help available everywhere you see the ⓘ symbol.

The following versions of software and data (see [references ⓘ](#)) were used in the production of this report:

MolProbity : 4.02b-467
Mogul : 1.7 (RC4), CSD as536be (2015)
Xtriage (Phenix) : **NOT EXECUTED**
EDS : **NOT EXECUTED**
Percentile statistics : 20151230.v01 (using entries in the PDB archive December 30th 2015)
Ideal geometry (proteins) : Engh & Huber (2001)
Ideal geometry (DNA, RNA) : Parkinson et al. (1996)
Validation Pipeline (wwPDB-VP) : trunk26865

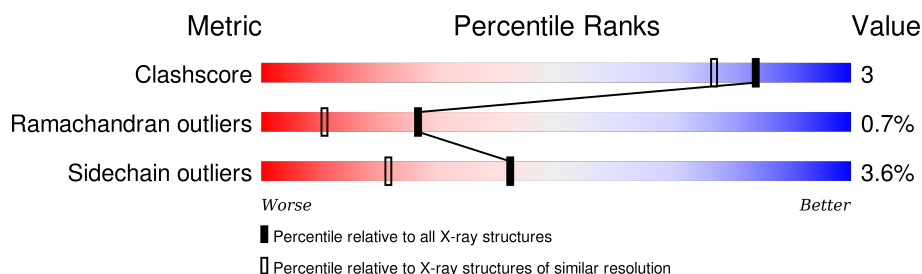
1 Overall quality at a glance

The following experimental techniques were used to determine the structure:

X-RAY DIFFRACTION

The reported resolution of this entry is 1.85 Å.

Percentile scores (ranging between 0-100) for global validation metrics of the entry are shown in the following graphic. The table shows the number of entries on which the scores are based.



Metric	Whole archive (#Entries)	Similar resolution (#Entries, resolution range(Å))
Clashscore	102246	1898 (1.86-1.86)
Ramachandran outliers	100387	1875 (1.86-1.86)
Sidechain outliers	100360	1875 (1.86-1.86)

The table below summarises the geometric issues observed across the polymeric chains and their fit to the electron density. The red, orange, yellow and green segments on the lower bar indicate the fraction of residues that contain outliers for ≥ 3 , 2, 1 and 0 types of geometric quality criteria. A grey segment represents the fraction of residues that are not modelled. The numeric value for each fraction is indicated below the corresponding segment, with a dot representing fractions $\leq 5\%$. The upper red bar (where present) indicates the fraction of residues that have poor fit to the electron density. The numeric value is given above the bar.

Note EDS was not executed.

Mol	Chain	Length	Quality of chain
1	A	226	 81% 16% ..
1	B	226	 83% 12% ..

2 Entry composition [i](#)

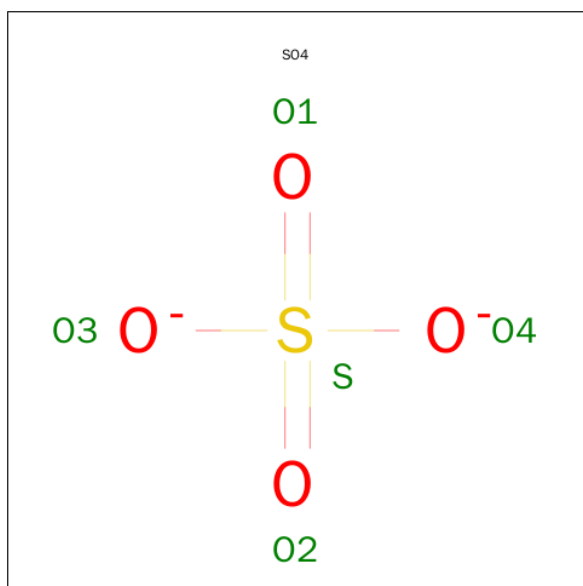
There are 4 unique types of molecules in this entry. The entry contains 3997 atoms, of which 0 are hydrogens and 0 are deuteriums.

In the tables below, the ZeroOcc column contains the number of atoms modelled with zero occupancy, the AltConf column contains the number of residues with at least one atom in alternate conformation and the Trace column contains the number of residues modelled with at most 2 atoms.

- Molecule 1 is a protein called ADENYLATE KINASE ISOENZYME-3.

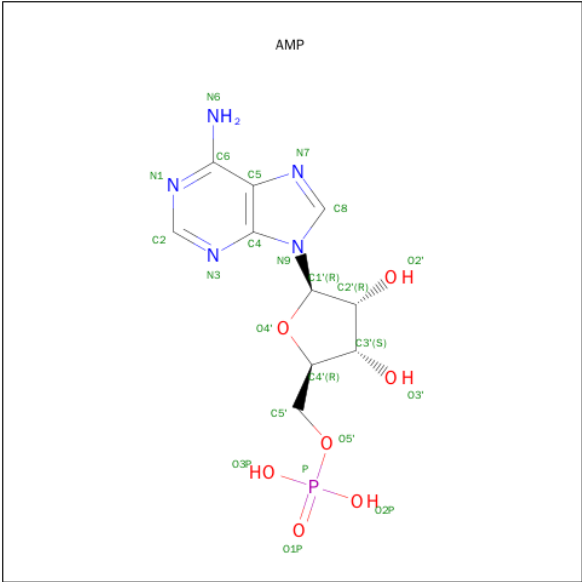
Mol	Chain	Residues	Atoms					ZeroOcc	AltConf	Trace
1	A	226	Total	C	N	O	S	0	0	0
			1801	1144	319	334	4			
1	B	221	Total	C	N	O	S	3	0	1
			1759	1118	314	323	4			

- Molecule 2 is SULFATE ION (three-letter code: SO4) (formula: O₄S).



Mol	Chain	Residues	Atoms			ZeroOcc	AltConf
2	A	1	Total	O	S	0	0
			5	4	1		
2	B	1	Total	O	S	0	0
			5	4	1		

- Molecule 3 is ADENOSINE MONOPHOSPHATE (three-letter code: AMP) (formula: C₁₀H₁₄N₅O₇P).



Mol	Chain	Residues	Atoms					ZeroOcc	AltConf
3	A	1	Total	C	N	O	P	0	0
			23	10	5	7	1		
3	B	1	Total	C	N	O	P	0	0
			23	10	5	7	1		

- Molecule 4 is water.

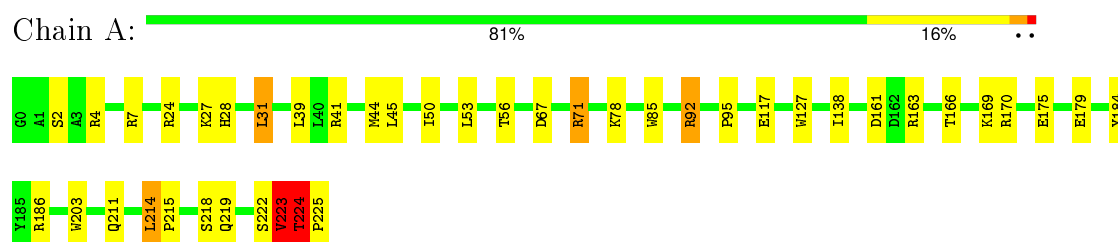
Mol	Chain	Residues	Atoms		ZeroOcc	AltConf
4	A	182	Total	O	0	0
			182	182		
4	B	199	Total	O	0	0
			199	199		

3 Residue-property plots

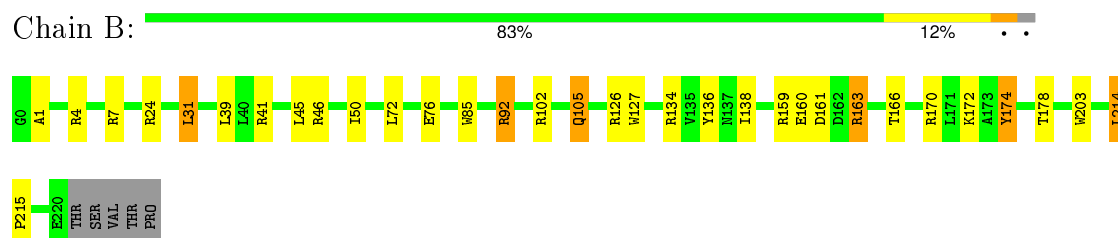
These plots are drawn for all protein, RNA and DNA chains in the entry. The first graphic for a chain summarises the proportions of errors displayed in the second graphic. The second graphic shows the sequence view annotated by issues in geometry and electron density. Residues are color-coded according to the number of geometric quality criteria for which they contain at least one outlier: green = 0, yellow = 1, orange = 2 and red = 3 or more. A red dot above a residue indicates a poor fit to the electron density ($\text{RSRZ} > 2$). Stretches of 2 or more consecutive residues without any outlier are shown as a green connector. Residues present in the sample, but not in the model, are shown in grey.

Note EDS was not executed.

• Molecule 1: ADENYLATE KINASE ISOENZYME-3



• Molecule 1: ADENYLATE KINASE ISOENZYME-3



4 Data and refinement statistics

Xtriage (Phenix) and EDS were not executed - this section will therefore be incomplete.

Property	Value	Source
Space group	P 21 21 21	Depositor
Cell constants a, b, c, α , β , γ	49.83 Å 66.99 Å 155.41 Å 90.00° 90.00° 90.00°	Depositor
Resolution (Å)	10.00 – 1.85	Depositor
% Data completeness (in resolution range)	94.4 (10.00-1.85)	Depositor
R_{merge}	(Not available)	Depositor
R_{sym}	(Not available)	Depositor
Refinement program	X-PLOR	Depositor
R, R_{free}	0.189 , (Not available)	Depositor
Estimated twinning fraction	No twinning to report.	Xtriage
Total number of atoms	3997	wwPDB-VP
Average B, all atoms (Å ²)	32.0	wwPDB-VP

5 Model quality

5.1 Standard geometry

Bond lengths and bond angles in the following residue types are not validated in this section: AMP, SO4

The Z score for a bond length (or angle) is the number of standard deviations the observed value is removed from the expected value. A bond length (or angle) with $|Z| > 5$ is considered an outlier worth inspection. RMSZ is the root-mean-square of all Z scores of the bond lengths (or angles).

Mol	Chain	Bond lengths		Bond angles	
		RMSZ	# Z >5	RMSZ	# Z >5
1	A	0.87	0/1839	1.56	28/2494 (1.1%)
1	B	0.87	0/1796	1.57	32/2434 (1.3%)
All	All	0.87	0/3635	1.57	60/4928 (1.2%)

Chiral center outliers are detected by calculating the chiral volume of a chiral center and verifying if the center is modelled as a planar moiety or with the opposite hand. A planarity outlier is detected by checking planarity of atoms in a peptide group, atoms in a mainchain group or atoms of a sidechain that are expected to be planar.

Mol	Chain	#Chirality outliers	#Planarity outliers
1	A	0	2

There are no bond length outliers.

All (60) bond angle outliers are listed below:

Mol	Chain	Res	Type	Atoms	Z	Observed(°)	Ideal(°)
1	B	170	ARG	NE-CZ-NH2	-10.26	115.17	120.30
1	B	92	ARG	NE-CZ-NH2	-10.24	115.18	120.30
1	B	85	TRP	CD1-CG-CD2	10.14	114.42	106.30
1	A	92	ARG	NE-CZ-NH2	-10.12	115.24	120.30
1	A	186	ARG	NE-CZ-NH2	-9.27	115.67	120.30
1	B	127	TRP	CD1-CG-CD2	8.81	113.35	106.30
1	A	85	TRP	CD1-CG-CD2	8.75	113.30	106.30
1	A	186	ARG	NE-CZ-NH1	8.35	124.47	120.30
1	A	170	ARG	NE-CZ-NH1	8.33	124.47	120.30
1	B	126	ARG	NE-CZ-NH2	-8.24	116.18	120.30
1	B	85	TRP	CE2-CD2-CG	-7.80	101.06	107.30
1	B	92	ARG	NE-CZ-NH1	7.79	124.19	120.30
1	A	218	SER	CA-C-N	-7.68	100.31	117.20
1	B	127	TRP	CE2-CD2-CG	-7.65	101.18	107.30

Continued on next page...

Continued from previous page...

Mol	Chain	Res	Type	Atoms	Z	Observed(°)	Ideal(°)
1	B	46	ARG	NE-CZ-NH1	7.65	124.12	120.30
1	B	170	ARG	NE-CZ-NH1	7.36	123.98	120.30
1	A	127	TRP	CD1-CG-CD2	7.30	112.14	106.30
1	A	223	VAL	N-CA-C	-7.29	91.32	111.00
1	A	92	ARG	NE-CZ-NH1	7.19	123.90	120.30
1	B	203	TRP	CE2-CD2-CG	-7.13	101.60	107.30
1	B	1	ALA	N-CA-C	7.12	130.23	111.00
1	A	85	TRP	CE2-CD2-CG	-7.12	101.61	107.30
1	A	203	TRP	CE2-CD2-CG	-7.11	101.61	107.30
1	B	31	LEU	CA-CB-CG	7.01	131.43	115.30
1	A	203	TRP	CD1-CG-CD2	6.96	111.86	106.30
1	B	85	TRP	CG-CD1-NE1	-6.91	103.19	110.10
1	A	222	SER	CA-C-N	-6.78	102.28	117.20
1	A	127	TRP	CE2-CD2-CG	-6.70	101.94	107.30
1	B	163	ARG	NE-CZ-NH1	6.69	123.65	120.30
1	B	159	ARG	NE-CZ-NH1	6.61	123.60	120.30
1	B	127	TRP	CG-CD2-CE3	6.53	139.78	133.90
1	B	174	TYR	CB-CG-CD1	-6.51	117.09	121.00
1	A	31	LEU	CA-CB-CG	6.42	130.07	115.30
1	B	203	TRP	CD1-CG-CD2	6.33	111.36	106.30
1	A	223	VAL	CA-C-N	-6.31	103.31	117.20
1	B	126	ARG	NE-CZ-NH1	6.30	123.45	120.30
1	A	170	ARG	NE-CZ-NH2	-6.30	117.15	120.30
1	B	102	ARG	NE-CZ-NH1	6.28	123.44	120.30
1	A	71	ARG	NE-CZ-NH2	-6.26	117.17	120.30
1	B	203	TRP	CB-CG-CD1	-6.16	119.00	127.00
1	B	24	ARG	NE-CZ-NH1	6.10	123.35	120.30
1	B	134	ARG	NE-CZ-NH1	5.93	123.26	120.30
1	A	7	ARG	NE-CZ-NH1	5.92	123.26	120.30
1	B	4	ARG	NE-CZ-NH1	5.92	123.26	120.30
1	B	127	TRP	CB-CG-CD1	-5.71	119.57	127.00
1	A	163	ARG	NE-CZ-NH2	-5.71	117.45	120.30
1	A	184	TYR	CB-CG-CD1	-5.70	117.58	121.00
1	B	127	TRP	CG-CD1-NE1	-5.66	104.44	110.10
1	A	45	LEU	CA-CB-CG	5.60	128.18	115.30
1	A	219	GLN	N-CA-C	5.59	126.09	111.00
1	B	203	TRP	CG-CD2-CE3	5.57	138.91	133.90
1	B	136	TYR	CB-CG-CD2	-5.47	117.72	121.00
1	A	219	GLN	CA-C-N	5.33	128.94	117.20
1	A	85	TRP	CG-CD1-NE1	-5.28	104.82	110.10
1	B	136	TYR	CG-CD1-CE1	-5.25	117.10	121.30
1	B	214	LEU	CA-CB-CG	5.25	127.38	115.30

Continued on next page...

Continued from previous page...

Mol	Chain	Res	Type	Atoms	Z	Observed(°)	Ideal(°)
1	A	50	ILE	CA-CB-CG1	-5.22	101.09	111.00
1	B	134	ARG	NE-CZ-NH2	-5.20	117.70	120.30
1	A	4	ARG	NE-CZ-NH1	5.12	122.86	120.30
1	A	71	ARG	NE-CZ-NH1	5.09	122.85	120.30

There are no chirality outliers.

All (2) planarity outliers are listed below:

Mol	Chain	Res	Type	Group
1	A	223	VAL	Mainchain
1	A	224	THR	Peptide

5.2 Too-close contacts ⓘ

In the following table, the Non-H and H(model) columns list the number of non-hydrogen atoms and hydrogen atoms in the chain respectively. The H(added) column lists the number of hydrogen atoms added and optimized by MolProbity. The Clashes column lists the number of clashes within the asymmetric unit, whereas Symm-Clashes lists symmetry related clashes.

Mol	Chain	Non-H	H(model)	H(added)	Clashes	Symm-Clashes
1	A	1801	0	1832	13	0
1	B	1759	0	1791	9	0
2	A	5	0	0	0	0
2	B	5	0	0	0	0
3	A	23	0	11	0	0
3	B	23	0	12	1	0
4	A	182	0	0	3	0
4	B	199	0	0	2	0
All	All	3997	0	3646	22	0

The all-atom clashscore is defined as the number of clashes found per 1000 atoms (including hydrogen atoms). The all-atom clashscore for this structure is 3.

All (22) close contacts within the same asymmetric unit are listed below, sorted by their clash magnitude.

Atom-1	Atom-2	Interatomic distance (Å)	Clash overlap (Å)
1:B:39:LEU:HD21	1:B:76:GLU:HG2	1.81	0.62
1:B:161:ASP:HA	1:B:166:THR:HG21	1.83	0.59
1:B:50:ILE:HG21	1:B:72:LEU:HD13	1.87	0.56

Continued on next page...

Continued from previous page...

Atom-1	Atom-2	Interatomic distance (Å)	Clash overlap (Å)
1:A:214:LEU:HB2	1:A:215:PRO:HD2	1.88	0.55
1:A:117:GLU:HG3	4:A:364:HOH:O	2.07	0.55
1:A:223:VAL:HG22	1:A:225:PRO:HB2	1.91	0.52
1:A:53:LEU:O	1:A:56:THR:HB	2.10	0.51
1:B:105:GLN:HA	4:B:420:HOH:O	2.12	0.49
1:B:41:ARG:HD2	4:B:366:HOH:O	2.14	0.46
1:A:95:PRO:HG3	4:A:358:HOH:O	2.15	0.46
1:A:169:LYS:HE2	1:A:169:LYS:HB3	1.73	0.45
1:B:160:GLU:HA	1:B:163:ARG:NE	2.33	0.44
1:A:67:ASP:O	1:A:71:ARG:HG3	2.18	0.44
1:A:175:GLU:O	1:A:179:GLU:HB2	2.18	0.44
1:B:41:ARG:NH2	3:B:226:AMP:O1P	2.51	0.44
1:B:174:TYR:CE1	1:B:178:THR:HG21	2.54	0.43
1:B:214:LEU:HB2	1:B:215:PRO:HD2	2.00	0.43
1:A:41:ARG:HA	1:A:44:MET:HE2	2.01	0.42
1:A:39:LEU:HD23	4:A:305:HOH:O	2.19	0.42
1:A:78:LYS:HB3	1:A:78:LYS:HE2	1.71	0.41
1:A:24:ARG:O	1:A:28:HIS:HD2	2.04	0.41
1:A:161:ASP:HA	1:A:166:THR:HG21	2.03	0.41

There are no symmetry-related clashes.

5.3 Torsion angles [i](#)

5.3.1 Protein backbone [i](#)

In the following table, the Percentiles column shows the percent Ramachandran outliers of the chain as a percentile score with respect to all X-ray entries followed by that with respect to entries of similar resolution.

The Analysed column shows the number of residues for which the backbone conformation was analysed, and the total number of residues.

Mol	Chain	Analysed	Favoured	Allowed	Outliers	Percentiles	
1	A	224/226 (99%)	216 (96%)	5 (2%)	3 (1%)	15	3
1	B	219/226 (97%)	218 (100%)	1 (0%)	0	100	100
All	All	443/452 (98%)	434 (98%)	6 (1%)	3 (1%)	26	11

All (3) Ramachandran outliers are listed below:

Mol	Chain	Res	Type
1	A	223	VAL
1	A	2	SER
1	A	224	THR

5.3.2 Protein sidechains ⓘ

In the following table, the Percentiles column shows the percent sidechain outliers of the chain as a percentile score with respect to all X-ray entries followed by that with respect to entries of similar resolution.

The Analysed column shows the number of residues for which the sidechain conformation was analysed, and the total number of residues.

Mol	Chain	Analysed	Rotameric	Outliers	Percentiles	
1	A	197/197 (100%)	190 (96%)	7 (4%)	42	21
1	B	191/197 (97%)	184 (96%)	7 (4%)	41	20
All	All	388/394 (98%)	374 (96%)	14 (4%)	42	21

All (14) residues with a non-rotameric sidechain are listed below:

Mol	Chain	Res	Type
1	A	27	LYS
1	A	31	LEU
1	A	92	ARG
1	A	138	ILE
1	A	211	GLN
1	A	214	LEU
1	A	224	THR
1	B	7	ARG
1	B	31	LEU
1	B	45	LEU
1	B	92	ARG
1	B	105	GLN
1	B	138	ILE
1	B	172	LYS

Some sidechains can be flipped to improve hydrogen bonding and reduce clashes. All (6) such sidechains are listed below:

Mol	Chain	Res	Type
1	A	28	HIS
1	A	43	ASN

Continued on next page...

Continued from previous page...

Mol	Chain	Res	Type
1	A	211	GLN
1	A	216	GLN
1	B	43	ASN
1	B	177	GLN

5.3.3 RNA [i](#)

There are no RNA molecules in this entry.

5.4 Non-standard residues in protein, DNA, RNA chains [i](#)

There are no non-standard protein/DNA/RNA residues in this entry.

5.5 Carbohydrates [i](#)

There are no carbohydrates in this entry.

5.6 Ligand geometry [i](#)

4 ligands are modelled in this entry.

In the following table, the Counts columns list the number of bonds (or angles) for which Mogul statistics could be retrieved, the number of bonds (or angles) that are observed in the model and the number of bonds (or angles) that are defined in the chemical component dictionary. The Link column lists molecule types, if any, to which the group is linked. The Z score for a bond length (or angle) is the number of standard deviations the observed value is removed from the expected value. A bond length (or angle) with $|Z| > 2$ is considered an outlier worth inspection. RMSZ is the root-mean-square of all Z scores of the bond lengths (or angles).

Mol	Type	Chain	Res	Link	Bond lengths			Bond angles		
					Counts	RMSZ	$\# Z > 2$	Counts	RMSZ	$\# Z > 2$
3	AMP	A	226	-	20,25,25	1.41	5 (25%)	22,38,38	2.60	7 (31%)
2	SO4	A	227	-	4,4,4	1.18	0	6,6,6	0.22	0
3	AMP	B	226	-	20,25,25	1.32	3 (15%)	22,38,38	2.41	7 (31%)
2	SO4	B	227	-	4,4,4	1.50	0	6,6,6	0.55	0

In the following table, the Chirals column lists the number of chiral outliers, the number of chiral centers analysed, the number of these observed in the model and the number defined in the chemical component dictionary. Similar counts are reported in the Torsion and Rings columns. '-' means no outliers of that kind were identified.

Mol	Type	Chain	Res	Link	Chirals	Torsions	Rings
3	AMP	A	226	-	-	0/6/26/26	0/3/3/3
2	SO4	A	227	-	-	0/0/0/0	0/0/0/0
3	AMP	B	226	-	-	0/6/26/26	0/3/3/3
2	SO4	B	227	-	-	0/0/0/0	0/0/0/0

All (8) bond length outliers are listed below:

Mol	Chain	Res	Type	Atoms	Z	Observed(Å)	Ideal(Å)
3	A	226	AMP	P-O5'	-2.83	1.50	1.60
3	B	226	AMP	P-O2P	-2.38	1.46	1.54
3	A	226	AMP	P-O2P	-2.31	1.46	1.54
3	B	226	AMP	C8-N7	-2.30	1.30	1.34
3	B	226	AMP	P-O3P	-2.17	1.46	1.54
3	A	226	AMP	P-O3P	-2.13	1.47	1.54
3	A	226	AMP	C8-N7	-2.10	1.30	1.34
3	A	226	AMP	P-O1P	2.69	1.60	1.51

All (14) bond angle outliers are listed below:

Mol	Chain	Res	Type	Atoms	Z	Observed(°)	Ideal(°)
3	B	226	AMP	C4'-O4'-C1'	-5.83	103.31	109.72
3	A	226	AMP	C4'-O4'-C1'	-5.50	103.67	109.72
3	A	226	AMP	O3P-P-O1P	-3.58	99.06	110.58
3	B	226	AMP	O5'-P-O1P	-2.86	99.86	107.14
3	A	226	AMP	C4-C5-N7	-2.22	107.44	109.48
3	B	226	AMP	C4-C5-N7	-2.21	107.44	109.48
3	A	226	AMP	O2P-P-O1P	2.71	119.30	110.58
3	A	226	AMP	O3P-P-O2P	2.90	118.43	107.38
3	B	226	AMP	O3P-P-O2P	2.92	118.51	107.38
3	B	226	AMP	N3-C2-N1	3.60	131.65	128.89
3	B	226	AMP	C2'-C1'-N9	4.10	120.55	114.29
3	A	226	AMP	C2'-C1'-N9	5.60	122.84	114.29
3	B	226	AMP	O4'-C1'-N9	5.73	120.09	108.10
3	A	226	AMP	O4'-C1'-N9	6.01	120.67	108.10

There are no chirality outliers.

There are no torsion outliers.

There are no ring outliers.

1 monomer is involved in 1 short contact:

Mol	Chain	Res	Type	Clashes	Symm-Clashes
3	B	226	AMP	1	0

5.7 Other polymers

There are no such residues in this entry.

5.8 Polymer linkage issues

There are no chain breaks in this entry.

6 Fit of model and data [i](#)

6.1 Protein, DNA and RNA chains [i](#)

EDS was not executed - this section will therefore be empty.

6.2 Non-standard residues in protein, DNA, RNA chains [i](#)

EDS was not executed - this section will therefore be empty.

6.3 Carbohydrates [i](#)

EDS was not executed - this section will therefore be empty.

6.4 Ligands [i](#)

EDS was not executed - this section will therefore be empty.

6.5 Other polymers [i](#)

EDS was not executed - this section will therefore be empty.