



wwPDB X-ray Structure Validation Summary Report ⓘ

Feb 1, 2016 – 07:24 AM GMT

PDB ID : 3AKZ
Title : Crystal structure of Thermotoga maritima nondiscriminating glutamyl-tRNA synthetase in complex with tRNAGln and a glutamyl-AMP analog
Authors : Ito, T.; Yokoyama, S.
Deposited on : 2010-07-19
Resolution : 2.90 Å(reported)

This is a wwPDB X-ray Structure Validation Summary Report for a publicly released PDB entry.
We welcome your comments at validation@mail.wwpdb.org
A user guide is available at
<http://wwpdb.org/validation/2016/XrayValidationReportHelp>
with specific help available everywhere you see the ⓘ symbol.

The following versions of software and data (see [references ⓘ](#)) were used in the production of this report:

MolProbity : 4.02b-467
Mogul : 1.7 (RC4), CSD as536be (2015)
Xtriage (Phenix) : 1.9-1692
EDS : rb-20026688
Percentile statistics : 20151230.v01 (using entries in the PDB archive December 30th 2015)
Refmac : 5.8.0135
CCP4 : 6.5.0
Ideal geometry (proteins) : Engh & Huber (2001)
Ideal geometry (DNA, RNA) : Parkinson et al. (1996)
Validation Pipeline (wwPDB-VP) : trunk26865

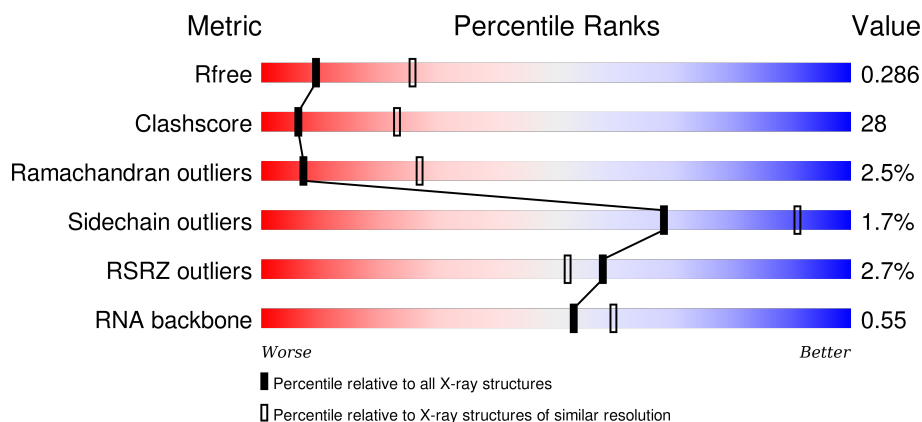
1 Overall quality at a glance

The following experimental techniques were used to determine the structure:

X-RAY DIFFRACTION

The reported resolution of this entry is 2.90 Å.

Percentile scores (ranging between 0-100) for global validation metrics of the entry are shown in the following graphic. The table shows the number of entries on which the scores are based.



Metric	Whole archive (#Entries)	Similar resolution (#Entries, resolution range(Å))
R_{free}	91344	1451 (2.90-2.90)
Clashscore	102246	1668 (2.90-2.90)
Ramachandran outliers	100387	1630 (2.90-2.90)
Sidechain outliers	100360	1632 (2.90-2.90)
RSRZ outliers	91569	1456 (2.90-2.90)
RNA backbone	2183	1093 (3.30-2.50)

The table below summarises the geometric issues observed across the polymeric chains and their fit to the electron density. The red, orange, yellow and green segments on the lower bar indicate the fraction of residues that contain outliers for ≥ 3 , 2, 1 and 0 types of geometric quality criteria. A grey segment represents the fraction of residues that are not modelled. The numeric value for each fraction is indicated below the corresponding segment, with a dot representing fractions $\leq 5\%$. The upper red bar (where present) indicates the fraction of residues that have poor fit to the electron density. The numeric value is given above the bar.

Mol	Chain	Length	Quality of chain
1	A	487	<div> <div>2%</div> <div>40%</div> <div>51%</div> <div>5%</div> </div>
1	B	487	<div> <div>%</div> <div>45%</div> <div>47%</div> <div>5%</div> </div>
1	C	487	<div> <div>6%</div> <div>46%</div> <div>47%</div> <div>5%</div> </div>
1	D	487	<div> <div>3%</div> <div>39%</div> <div>54%</div> <div>5%</div> </div>

Continued on next page...

Continued from previous page...

Mol	Chain	Length	Quality of chain
2	E	74	<div><div></div><div>%</div><div><div></div><div>22%</div><div>62%</div><div>16%</div></div></div>
2	F	74	<div><div></div><div>32%</div><div>59%</div><div>8%</div></div>
2	G	74	<div><div></div><div>27%</div><div>66%</div><div>7%</div></div>
2	H	74	<div><div></div><div>30%</div><div>59%</div><div>11%</div></div>

2 Entry composition

There are 3 unique types of molecules in this entry. The entry contains 21872 atoms, of which 0 are hydrogens and 0 are deuteriums.

In the tables below, the ZeroOcc column contains the number of atoms modelled with zero occupancy, the AltConf column contains the number of residues with at least one atom in alternate conformation and the Trace column contains the number of residues modelled with at most 2 atoms.

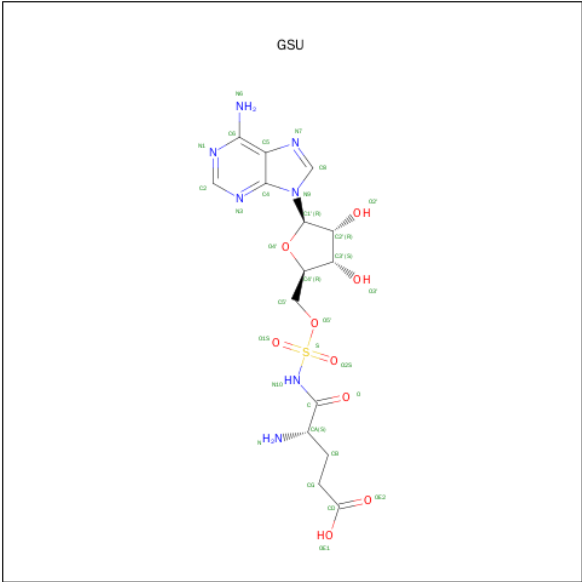
- Molecule 1 is a protein called Glutamyl-tRNA synthetase 2.

Mol	Chain	Residues	Atoms					ZeroOcc	AltConf	Trace
1	B	463	Total	C	N	O	S	0	0	0
			3855	2475	652	715	13			
1	D	463	Total	C	N	O	S	0	0	0
			3855	2475	652	715	13			
1	C	463	Total	C	N	O	S	0	0	0
			3855	2475	652	715	13			
1	A	463	Total	C	N	O	S	0	0	0
			3855	2475	652	715	13			

- Molecule 2 is a RNA chain called tRNAGln.

Mol	Chain	Residues	Atoms					ZeroOcc	AltConf	Trace
2	F	74	Total	C	N	O	P	0	0	0
			1581	703	281	523	74			
2	H	74	Total	C	N	O	P	0	0	0
			1581	703	281	523	74			
2	G	74	Total	C	N	O	P	0	0	0
			1581	703	281	523	74			
2	E	74	Total	C	N	O	P	0	0	0
			1581	703	281	523	74			

- Molecule 3 is O5'-(L-GLUTAMYL-SULFAMOYL)-ADENOSINE (three-letter code: GSU) (formula: C₁₅H₂₁N₇O₉S).

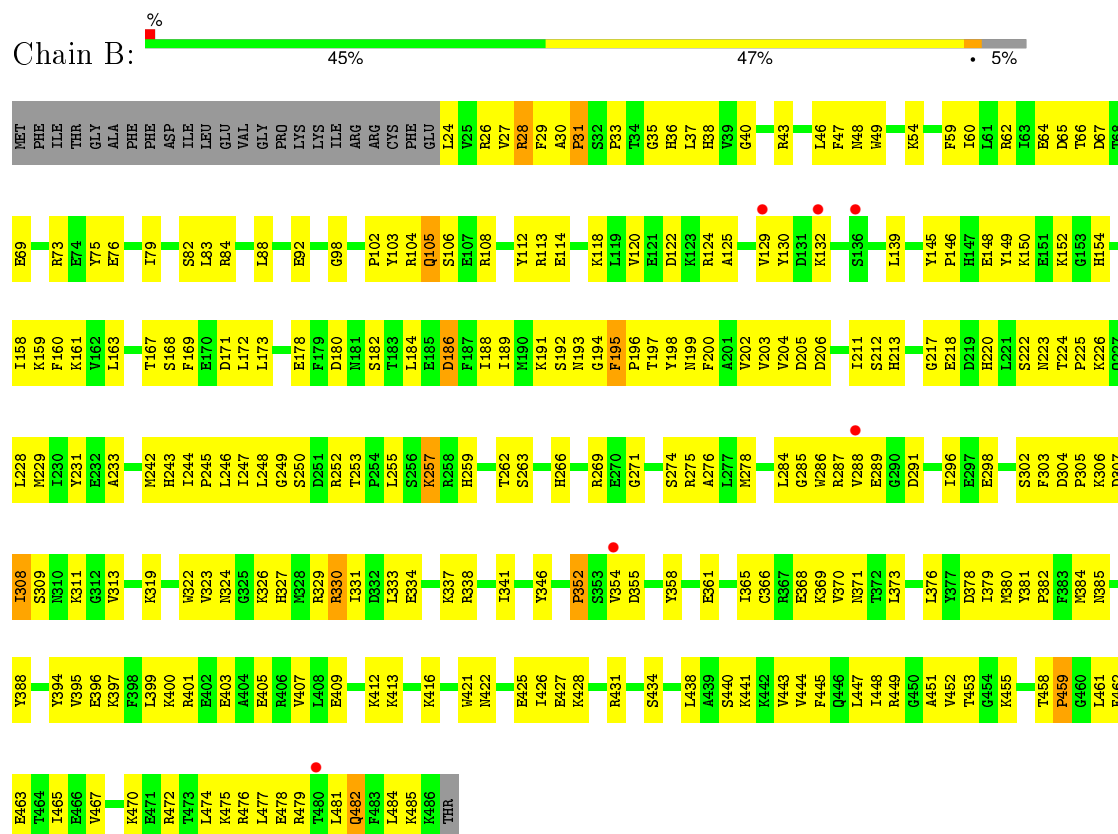


Mol	Chain	Residues	Atoms					ZeroOcc	AltConf
3	B	1	Total	C	N	O	S	0	0
			32	15	7	9	1		
3	D	1	Total	C	N	O	S	0	0
			32	15	7	9	1		
3	C	1	Total	C	N	O	S	0	0
			32	15	7	9	1		
3	A	1	Total	C	N	O	S	0	0
			32	15	7	9	1		

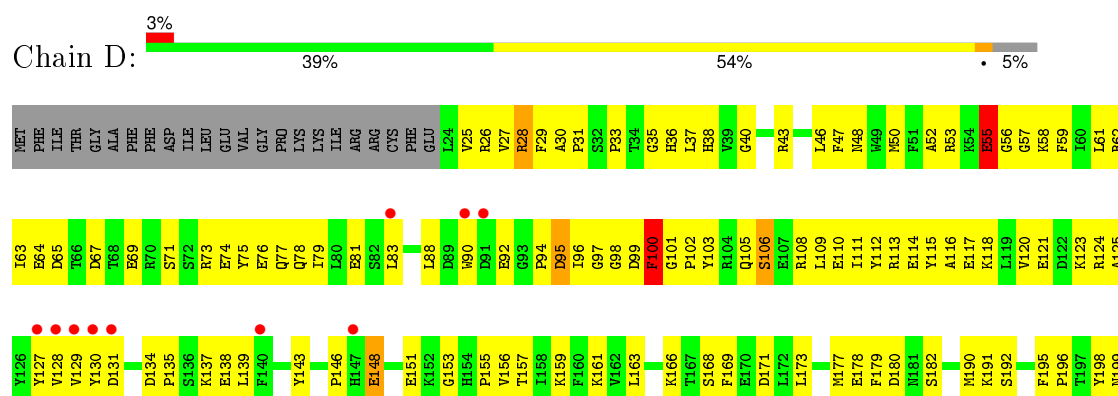
3 Residue-property plots

These plots are drawn for all protein, RNA and DNA chains in the entry. The first graphic for a chain summarises the proportions of errors displayed in the second graphic. The second graphic shows the sequence view annotated by issues in geometry and electron density. Residues are color-coded according to the number of geometric quality criteria for which they contain at least one outlier: green = 0, yellow = 1, orange = 2 and red = 3 or more. A red dot above a residue indicates a poor fit to the electron density ($RSRZ > 2$). Stretches of 2 or more consecutive residues without any outlier are shown as a green connector. Residues present in the sample, but not in the model, are shown in grey.

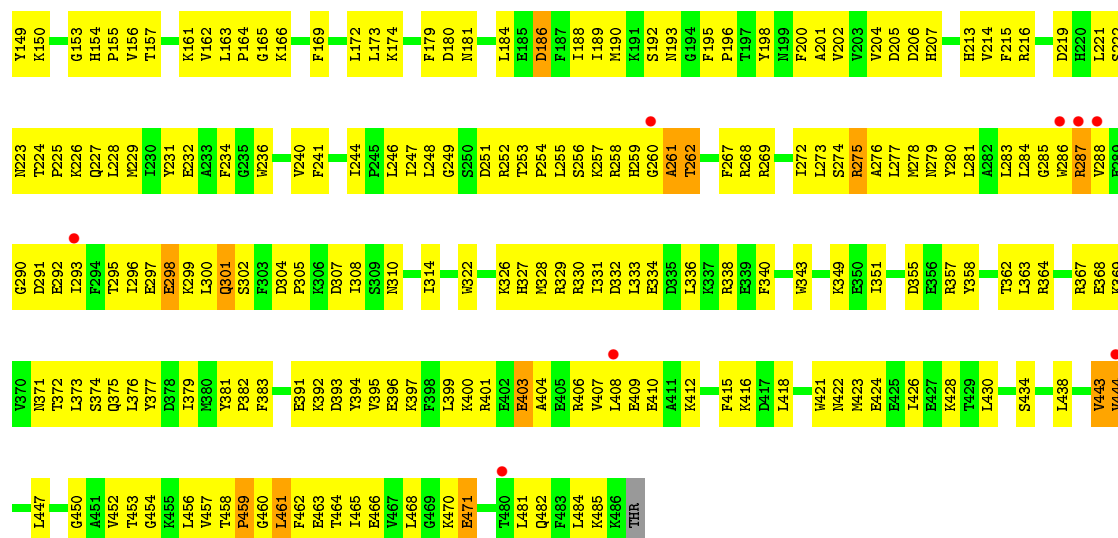
• Molecule 1: Glutamyl-tRNA synthetase 2



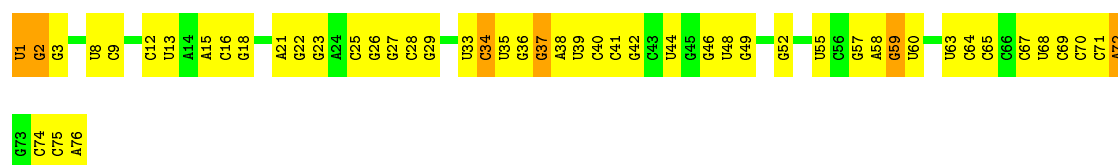
• Molecule 1: Glutamyl-tRNA synthetase 2







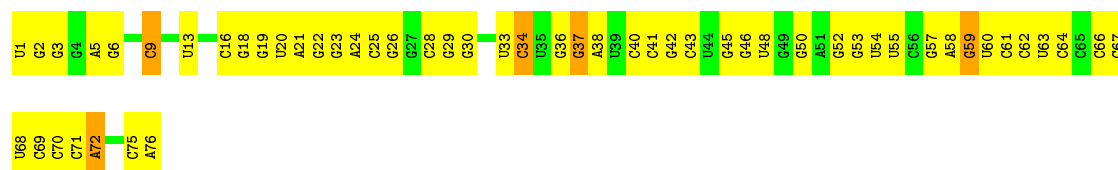
• Molecule 2: tRNA^{Gln}



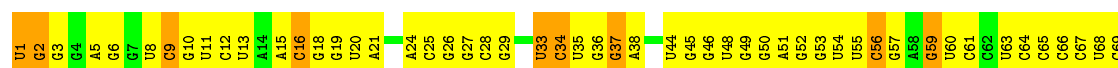
• Molecule 2: tRNA^{Gln}



• Molecule 2: tRNA^{Gln}



• Molecule 2: tRNA^{Gln}





4 Data and refinement statistics

Property	Value	Source
Space group	P 1 21 1	Depositor
Cell constants a, b, c, α , β , γ	63.20Å 159.90Å 156.17Å 90.00° 90.06° 90.00°	Depositor
Resolution (Å)	50.00 – 2.90 49.10 – 2.89	Depositor EDS
% Data completeness (in resolution range)	81.6 (50.00-2.90) 87.3 (49.10-2.89)	Depositor EDS
R_{merge}	(Not available)	Depositor
R_{sym}	0.11	Depositor
$\langle I/\sigma(I) \rangle$ ¹	2.18 (at 2.91Å)	Xtriage
Refinement program	CNS 1.2	Depositor
R, R_{free}	0.200 , 0.282 0.211 , 0.286	Depositor DCC
R_{free} test set	2692 reflections (4.68%)	DCC
Wilson B-factor (Å ²)	48.3	Xtriage
Anisotropy	0.652	Xtriage
Bulk solvent k_{sol} (e/Å ³), B_{sol} (Å ²)	(Not available) , (Not available)	EDS
Estimated twinning fraction	0.500 for h, -k, -l 0.054 for -h,-l,-k 0.047 for -h,l,k 0.430 for h,-k,-l	Xtriage
Reported twinning fraction	0.500 for h, -k, -l	Depositor
L-test for twinning ²	$\langle L \rangle = 0.43$, $\langle L^2 \rangle = 0.25$	Xtriage
Outliers	0 of 60407 reflections	Xtriage
F_o, F_c correlation	0.90	EDS
Total number of atoms	21872	wwPDB-VP
Average B, all atoms (Å ²)	48.0	wwPDB-VP

Xtriage's analysis on translational NCS is as follows: *The largest off-origin peak in the Patterson function is 14.92% of the height of the origin peak. No significant pseudotranslation is detected.*

¹Intensities estimated from amplitudes.

²Theoretical values of $\langle |L| \rangle$, $\langle L^2 \rangle$ for acentric reflections are 0.5, 0.375 respectively for untwinned datasets, and 0.333, 0.2 for perfectly twinned datasets.

5 Model quality ⓘ

5.1 Standard geometry ⓘ

Bond lengths and bond angles in the following residue types are not validated in this section: GSU

The Z score for a bond length (or angle) is the number of standard deviations the observed value is removed from the expected value. A bond length (or angle) with $|Z| > 5$ is considered an outlier worth inspection. RMSZ is the root-mean-square of all Z scores of the bond lengths (or angles).

Mol	Chain	Bond lengths		Bond angles	
		RMSZ	$\# Z > 5$	RMSZ	$\# Z > 5$
1	A	0.26	0/3947	0.42	0/5313
1	B	0.26	0/3947	0.41	0/5313
1	C	0.26	0/3947	0.41	0/5313
1	D	0.26	0/3947	0.41	0/5313
2	E	0.27	1/1765 (0.1%)	0.65	0/2749
2	F	0.27	1/1765 (0.1%)	0.65	0/2749
2	G	0.27	1/1765 (0.1%)	0.65	0/2749
2	H	0.26	1/1765 (0.1%)	0.65	0/2749
All	All	0.26	4/22848 (0.0%)	0.51	0/32248

All (4) bond length outliers are listed below:

Mol	Chain	Res	Type	Atoms	Z	Observed(Å)	Ideal(Å)
2	E	1	U	OP3-P	-7.25	1.52	1.61
2	H	1	U	OP3-P	-7.23	1.52	1.61
2	G	1	U	OP3-P	-7.20	1.52	1.61
2	F	1	U	OP3-P	-7.20	1.52	1.61

There are no bond angle outliers.

There are no chirality outliers.

There are no planarity outliers.

5.2 Too-close contacts ⓘ

In the following table, the Non-H and H(model) columns list the number of non-hydrogen atoms and hydrogen atoms in the chain respectively. The H(added) column lists the number of hydrogen atoms added and optimized by MolProbity. The Clashes column lists the number of clashes within the asymmetric unit, whereas Symm-Clashes lists symmetry related clashes.

Mol	Chain	Non-H	H(model)	H(added)	Clashes	Symm-Clashes
1	A	3855	0	3805	271	0
1	B	3855	0	3805	244	0
1	C	3855	0	3805	227	0
1	D	3855	0	3805	259	0
2	E	1581	0	800	59	0
2	F	1581	0	800	49	0
2	G	1581	0	800	55	0
2	H	1581	0	800	46	0
3	A	32	0	20	0	0
3	B	32	0	20	2	0
3	C	32	0	20	2	0
3	D	32	0	20	1	0
All	All	21872	0	18500	1126	0

The all-atom clashscore is defined as the number of clashes found per 1000 atoms (including hydrogen atoms). The all-atom clashscore for this structure is 28.

The worst 5 of 1126 close contacts within the same asymmetric unit are listed below, sorted by their clash magnitude.

Atom-1	Atom-2	Interatomic distance (Å)	Clash overlap (Å)
2:F:71:C:H2'	2:F:72:A:H5''	1.41	1.03
1:D:40:GLY:HA2	1:D:247:ILE:HD12	1.45	0.98
1:D:351:ILE:HG13	1:D:385:ASN:HD21	1.26	0.98
1:D:102:PRO:HD3	1:A:165:GLY:HA2	1.44	0.97
1:A:43:ARG:HD3	1:A:247:ILE:HD11	1.46	0.97

There are no symmetry-related clashes.

5.3 Torsion angles [i](#)

5.3.1 Protein backbone [i](#)

In the following table, the Percentiles column shows the percent Ramachandran outliers of the chain as a percentile score with respect to all X-ray entries followed by that with respect to entries of similar resolution.

The Analysed column shows the number of residues for which the backbone conformation was analysed, and the total number of residues.

Mol	Chain	Analysed	Favoured	Allowed	Outliers	Percentiles
1	A	461/487 (95%)	394 (86%)	55 (12%)	12 (3%)	7 26

Continued on next page...

Continued from previous page...

Mol	Chain	Analysed	Favoured	Allowed	Outliers	Percentiles	
1	B	461/487 (95%)	375 (81%)	77 (17%)	9 (2%)	9	33
1	C	461/487 (95%)	367 (80%)	80 (17%)	14 (3%)	5	22
1	D	461/487 (95%)	375 (81%)	74 (16%)	12 (3%)	7	26
All	All	1844/1948 (95%)	1511 (82%)	286 (16%)	47 (2%)	7	27

5 of 47 Ramachandran outliers are listed below:

Mol	Chain	Res	Type
1	D	106	SER
1	C	122	ASP
1	A	261	ALA
1	A	461	LEU
1	B	217	GLY

5.3.2 Protein sidechains ⓘ

In the following table, the Percentiles column shows the percent sidechain outliers of the chain as a percentile score with respect to all X-ray entries followed by that with respect to entries of similar resolution.

The Analysed column shows the number of residues for which the sidechain conformation was analysed, and the total number of residues.

Mol	Chain	Analysed	Rotameric	Outliers	Percentiles	
1	A	415/436 (95%)	406 (98%)	9 (2%)	60	88
1	B	415/436 (95%)	408 (98%)	7 (2%)	68	91
1	C	415/436 (95%)	410 (99%)	5 (1%)	78	94
1	D	415/436 (95%)	408 (98%)	7 (2%)	68	91
All	All	1660/1744 (95%)	1632 (98%)	28 (2%)	68	91

5 of 28 residues with a non-rotameric sidechain are listed below:

Mol	Chain	Res	Type
1	D	267	PHE
1	C	148	GLU
1	A	301	GLN
1	D	346	TYR
1	C	28	ARG

Some sidechains can be flipped to improve hydrogen bonding and reduce clashes. 5 of 24 such sidechains are listed below:

Mol	Chain	Res	Type
1	D	259	HIS
1	D	318	GLN
1	A	318	GLN
1	D	279	ASN
1	D	301	GLN

5.3.3 RNA ⓘ

Mol	Chain	Analysed	Backbone Outliers	Pucker Outliers
2	E	73/74 (98%)	15 (20%)	0
2	F	73/74 (98%)	12 (16%)	0
2	G	73/74 (98%)	13 (17%)	0
2	H	73/74 (98%)	14 (19%)	0
All	All	292/296 (98%)	54 (18%)	0

5 of 54 RNA backbone outliers are listed below:

Mol	Chain	Res	Type
2	F	2	G
2	F	9	C
2	F	16	C
2	F	18	G
2	F	33	U

There are no RNA pucker outliers to report.

5.4 Non-standard residues in protein, DNA, RNA chains ⓘ

There are no non-standard protein/DNA/RNA residues in this entry.

5.5 Carbohydrates ⓘ

There are no carbohydrates in this entry.

5.6 Ligand geometry ⓘ

4 ligands are modelled in this entry.

In the following table, the Counts columns list the number of bonds (or angles) for which Mogul statistics could be retrieved, the number of bonds (or angles) that are observed in the model and the number of bonds (or angles) that are defined in the chemical component dictionary. The Link column lists molecule types, if any, to which the group is linked. The Z score for a bond length (or angle) is the number of standard deviations the observed value is removed from the expected value. A bond length (or angle) with $|Z| > 2$ is considered an outlier worth inspection. RMSZ is the root-mean-square of all Z scores of the bond lengths (or angles).

Mol	Type	Chain	Res	Link	Bond lengths			Bond angles		
					Counts	RMSZ	$\# Z > 2$	Counts	RMSZ	$\# Z > 2$
3	GSU	A	1001	-	24,34,34	1.19	1 (4%)	30,50,50	2.35	6 (20%)
3	GSU	B	1001	-	24,34,34	1.18	2 (8%)	30,50,50	2.32	6 (20%)
3	GSU	C	1001	-	24,34,34	1.20	1 (4%)	30,50,50	2.30	5 (16%)
3	GSU	D	1001	-	24,34,34	1.21	2 (8%)	30,50,50	2.34	6 (20%)

In the following table, the Chirals column lists the number of chiral outliers, the number of chiral centers analysed, the number of these observed in the model and the number defined in the chemical component dictionary. Similar counts are reported in the Torsion and Rings columns. '-' means no outliers of that kind were identified.

Mol	Type	Chain	Res	Link	Chirals	Torsions	Rings
3	GSU	A	1001	-	-	0/16/40/40	0/3/3/3
3	GSU	B	1001	-	-	0/16/40/40	0/3/3/3
3	GSU	C	1001	-	-	0/16/40/40	0/3/3/3
3	GSU	D	1001	-	-	0/16/40/40	0/3/3/3

The worst 5 of 6 bond length outliers are listed below:

Mol	Chain	Res	Type	Atoms	Z	Observed(Å)	Ideal(Å)
3	D	1001	GSU	C8-N7	-2.04	1.30	1.34
3	B	1001	GSU	C8-N7	-2.01	1.30	1.34
3	A	1001	GSU	O4'-C1'	4.37	1.46	1.41
3	B	1001	GSU	O4'-C1'	4.42	1.46	1.41
3	C	1001	GSU	O4'-C1'	4.49	1.46	1.41

The worst 5 of 23 bond angle outliers are listed below:

Mol	Chain	Res	Type	Atoms	Z	Observed(°)	Ideal(°)
3	A	1001	GSU	N3-C2-N1	-9.83	121.37	128.89
3	D	1001	GSU	N3-C2-N1	-9.81	121.39	128.89
3	B	1001	GSU	N3-C2-N1	-9.78	121.41	128.89
3	C	1001	GSU	N3-C2-N1	-9.60	121.54	128.89
3	D	1001	GSU	C5'-O5'-S	-4.48	109.43	118.02

There are no chirality outliers.

There are no torsion outliers.

There are no ring outliers.

3 monomers are involved in 5 short contacts:

Mol	Chain	Res	Type	Clashes	Symm-Clashes
3	B	1001	GSU	2	0
3	C	1001	GSU	2	0
3	D	1001	GSU	1	0

5.7 Other polymers [i](#)

There are no such residues in this entry.

5.8 Polymer linkage issues [i](#)

There are no chain breaks in this entry.

6 Fit of model and data ⓘ

6.1 Protein, DNA and RNA chains ⓘ

In the following table, the column labelled ‘#RSRZ> 2’ contains the number (and percentage) of RSRZ outliers, followed by percent RSRZ outliers for the chain as percentile scores relative to all X-ray entries and entries of similar resolution. The OWAB column contains the minimum, median, 95th percentile and maximum values of the occupancy-weighted average B-factor per residue. The column labelled ‘Q< 0.9’ lists the number of (and percentage) of residues with an average occupancy less than 0.9.

Mol	Chain	Analysed	<RSRZ>	#RSRZ>2	OWAB(Å ²)	Q<0.9
1	A	463/487 (95%)	0.15	8 (1%) 73 70	13, 41, 66, 86	0
1	B	463/487 (95%)	0.15	6 (1%) 79 78	15, 41, 65, 90	0
1	C	463/487 (95%)	0.39	27 (5%) 26 20	15, 48, 82, 100	0
1	D	463/487 (95%)	0.38	17 (3%) 45 38	18, 52, 80, 95	0
2	E	74/74 (100%)	0.11	1 (1%) 78 76	17, 37, 75, 97	0
2	F	74/74 (100%)	0.13	0 100 100	24, 44, 69, 74	0
2	G	74/74 (100%)	0.26	0 100 100	29, 53, 92, 101	0
2	H	74/74 (100%)	0.23	0 100 100	27, 56, 87, 92	0
All	All	2148/2244 (95%)	0.25	59 (2%) 58 52	13, 45, 80, 101	0

The worst 5 of 59 RSRZ outliers are listed below:

Mol	Chain	Res	Type	RSRZ
1	D	90	TRP	4.1
1	C	431	ARG	4.1
1	A	288	VAL	3.8
1	C	438	LEU	3.7
1	C	390	TYR	3.6

6.2 Non-standard residues in protein, DNA, RNA chains ⓘ

There are no non-standard protein/DNA/RNA residues in this entry.

6.3 Carbohydrates ⓘ

There are no carbohydrates in this entry.

6.4 Ligands [i](#)

In the following table, the Atoms column lists the number of modelled atoms in the group and the number defined in the chemical component dictionary. LLDF column lists the quality of electron density of the group with respect to its neighbouring residues in protein, DNA or RNA chains. The B-factors column lists the minimum, median, 95th percentile and maximum values of B factors of atoms in the group. The column labelled 'Q< 0.9' lists the number of atoms with occupancy less than 0.9.

Mol	Type	Chain	Res	Atoms	RSCC	RSR	LLDF	B-factors(\AA^2)	Q<0.9
3	GSU	D	1001	32/32	0.96	0.22	1.03	34,39,44,44	0
3	GSU	C	1001	32/32	0.93	0.23	0.04	31,39,51,52	0
3	GSU	B	1001	32/32	0.95	0.20	-0.05	7,36,38,39	0
3	GSU	A	1001	32/32	0.96	0.19	-0.16	30,36,38,40	0

6.5 Other polymers [i](#)

There are no such residues in this entry.