



# Full wwPDB X-ray Structure Validation Report ⓘ

Feb 1, 2016 – 07:23 AM GMT

PDB ID : 3AM4  
Title : A372M mutant of Enoyl-ACP Reductase from Plasmodium falciparum (PfENR) in complex with triclosan variant T1  
Authors : Maity, K.; Banerjee, T.; Narayanappa, P.; Surolia, N.; Surolia, A.; Suguna, K.  
Deposited on : 2010-08-14  
Resolution : 2.30 Å(reported)

This is a Full wwPDB X-ray Structure Validation Report for a publicly released PDB entry.  
We welcome your comments at [validation@mail.wwpdb.org](mailto:validation@mail.wwpdb.org)  
A user guide is available at  
<http://wwpdb.org/validation/2016/XrayValidationReportHelp>  
with specific help available everywhere you see the ⓘ symbol.

---

The following versions of software and data (see [references ⓘ](#)) were used in the production of this report:

MolProbity : 4.02b-467  
Mogul : 1.7 (RC4), CSD as536be (2015)  
Xtriage (Phenix) : 1.9-1692  
EDS : rb-20026688  
Percentile statistics : 20151230.v01 (using entries in the PDB archive December 30th 2015)  
Refmac : 5.8.0135  
CCP4 : 6.5.0  
Ideal geometry (proteins) : Engh & Huber (2001)  
Ideal geometry (DNA, RNA) : Parkinson et al. (1996)  
Validation Pipeline (wwPDB-VP) : trunk26865

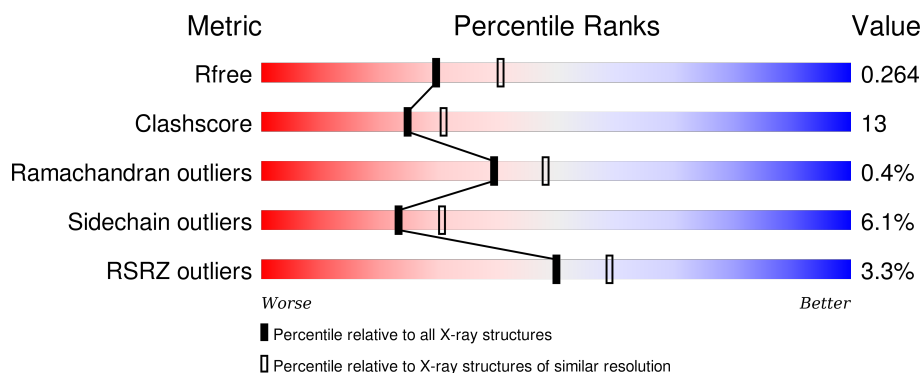
# 1 Overall quality at a glance

The following experimental techniques were used to determine the structure:

## *X-RAY DIFFRACTION*

The reported resolution of this entry is 2.30 Å.

Percentile scores (ranging between 0-100) for global validation metrics of the entry are shown in the following graphic. The table shows the number of entries on which the scores are based.



Metric	Whole archive (#Entries)	Similar resolution (#Entries, resolution range(Å))
$R_{free}$	91344	3852 (2.30-2.30)
Clashscore	102246	4452 (2.30-2.30)
Ramachandran outliers	100387	4410 (2.30-2.30)
Sidechain outliers	100360	4409 (2.30-2.30)
RSRZ outliers	91569	3857 (2.30-2.30)

The table below summarises the geometric issues observed across the polymeric chains and their fit to the electron density. The red, orange, yellow and green segments on the lower bar indicate the fraction of residues that contain outliers for  $\geq 3$ , 2, 1 and 0 types of geometric quality criteria. A grey segment represents the fraction of residues that are not modelled. The numeric value for each fraction is indicated below the corresponding segment, with a dot representing fractions  $\leq 5\%$ . The upper red bar (where present) indicates the fraction of residues that have poor fit to the electron density. The numeric value is given above the bar.

Mol	Chain	Length	Quality of chain
1	A	329	<div> <div style="width: 100%; height: 10px; position: relative;"> <div style="position: absolute; top: -5px; left: 0; width: 100%; height: 100%; background: linear-gradient(to right, red, orange, yellow, green, grey);"></div> <div style="position: absolute; top: 5px; left: 0; width: 100%; height: 100%; background: linear-gradient(to right, red, orange, yellow, green, grey);"></div> </div> <div style="display: flex; justify-content: space-between; padding: 0 10px;"> <span>68%</span> <span>18%</span> <span>•</span> <span>13%</span> </div> </div>
1	B	329	<div> <div style="width: 100%; height: 10px; position: relative;"> <div style="position: absolute; top: -5px; left: 0; width: 100%; height: 100%; background: linear-gradient(to right, red, orange, yellow, green, grey);"></div> <div style="position: absolute; top: 5px; left: 0; width: 100%; height: 100%; background: linear-gradient(to right, red, orange, yellow, green, grey);"></div> </div> <div style="display: flex; justify-content: space-between; padding: 0 10px;"> <span>67%</span> <span>19%</span> <span>•</span> <span>13%</span> </div> </div>

## 2 Entry composition [i](#)

There are 4 unique types of molecules in this entry. The entry contains 4745 atoms, of which 0 are hydrogens and 0 are deuteriums.

In the tables below, the ZeroOcc column contains the number of atoms modelled with zero occupancy, the AltConf column contains the number of residues with at least one atom in alternate conformation and the Trace column contains the number of residues modelled with at most 2 atoms.

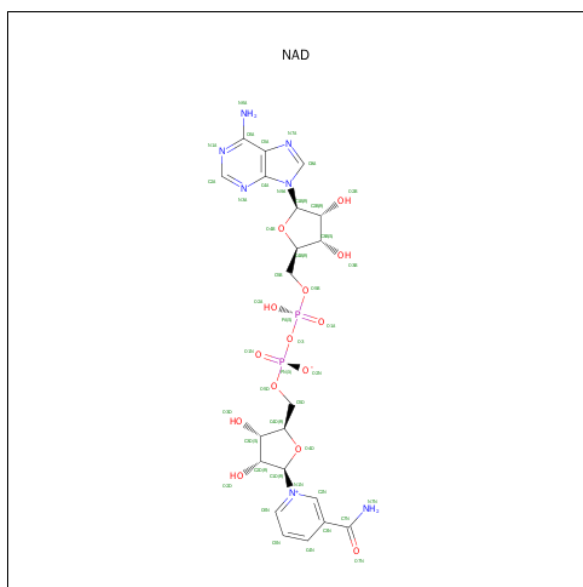
- Molecule 1 is a protein called Enoyl-ACP reductase.

Mol	Chain	Residues	Atoms					ZeroOcc	AltConf	Trace
1	A	287	Total	C	N	O	S	0	1	0
			2201	1407	367	415	12			
1	B	287	Total	C	N	O	S	0	1	0
			2208	1410	367	419	12			

There are 2 discrepancies between the modelled and reference sequences:

Chain	Residue	Modelled	Actual	Comment	Reference
A	372	MET	ALA	ENGINEERED MUTATION	UNP Q9BJJ9
B	372	MET	ALA	ENGINEERED MUTATION	UNP Q9BJJ9

- Molecule 2 is NICOTINAMIDE-ADENINE-DINUCLEOTIDE (three-letter code: NAD) (formula:  $C_{21}H_{27}N_7O_{14}P_2$ ).



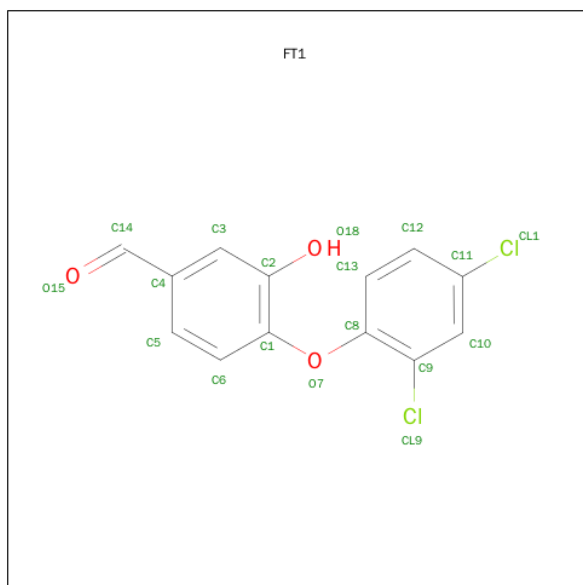
Mol	Chain	Residues	Atoms					ZeroOcc	AltConf
2	A	1	Total	C	N	O	P	0	0
			44	21	7	14	2		

*Continued on next page...*

Continued from previous page...

Mol	Chain	Residues	Atoms					ZeroOcc	AltConf
2	B	1	Total	C	N	O	P	0	0
			44	21	7	14	2		

- Molecule 3 is 4-(2,4-DICHLOROPHENOXY)-3-HYDROXYBENZALDEHYDE (three-letter code: FT1) (formula: C<sub>13</sub>H<sub>8</sub>Cl<sub>2</sub>O<sub>3</sub>).



Mol	Chain	Residues	Atoms				ZeroOcc	AltConf
3	A	1	Total	C	Cl	O	0	0
			18	13	2	3		
3	B	1	Total	C	Cl	O	0	0
			18	13	2	3		

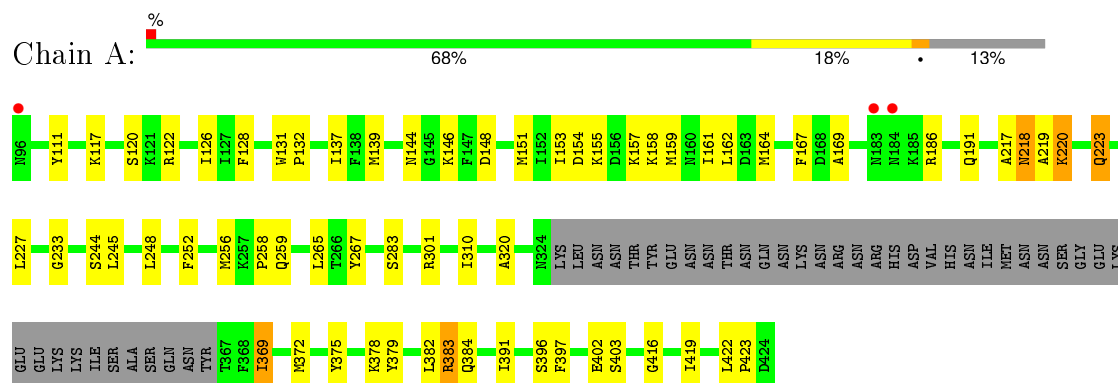
- Molecule 4 is water.

Mol	Chain	Residues	Atoms		ZeroOcc	AltConf
4	A	114	Total	O	0	0
			114	114		
4	B	98	Total	O	0	0
			98	98		

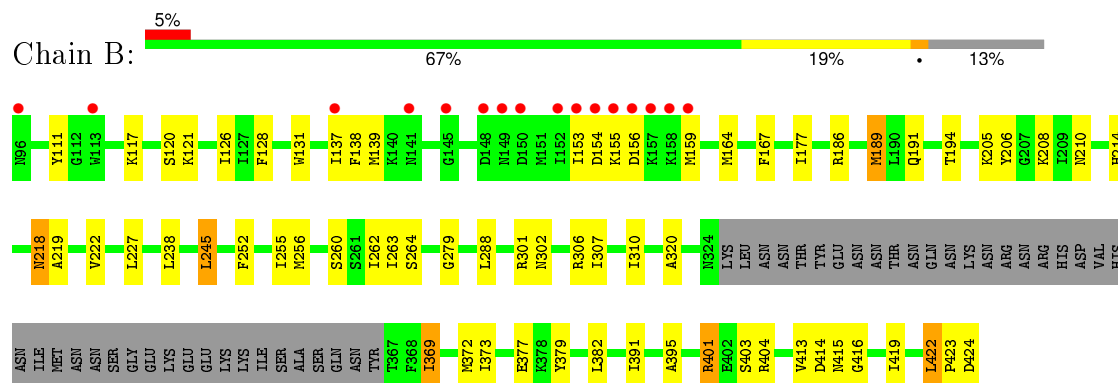
### 3 Residue-property plots [i](#)

These plots are drawn for all protein, RNA and DNA chains in the entry. The first graphic for a chain summarises the proportions of errors displayed in the second graphic. The second graphic shows the sequence view annotated by issues in geometry and electron density. Residues are color-coded according to the number of geometric quality criteria for which they contain at least one outlier: green = 0, yellow = 1, orange = 2 and red = 3 or more. A red dot above a residue indicates a poor fit to the electron density ( $RSRZ > 2$ ). Stretches of 2 or more consecutive residues without any outlier are shown as a green connector. Residues present in the sample, but not in the model, are shown in grey.

#### • Molecule 1: Enoyl-ACP reductase



#### • Molecule 1: Enoyl-ACP reductase



## 4 Data and refinement statistics

Property	Value	Source
Space group	P 43 21 2	Depositor
Cell constants a, b, c, $\alpha$ , $\beta$ , $\gamma$	130.68Å 130.68Å 82.67Å 90.00° 90.00° 90.00°	Depositor
Resolution (Å)	65.00 – 2.30 61.61 – 2.30	Depositor EDS
% Data completeness (in resolution range)	97.9 (65.00-2.30) 97.9 (61.61-2.30)	Depositor EDS
$R_{merge}$	0.12	Depositor
$R_{sym}$	(Not available)	Depositor
$\langle I/\sigma(I) \rangle$ <sup>1</sup>	2.91 (at 2.29Å)	Xtriage
Refinement program	REFMAC 5.5.0044	Depositor
R, $R_{free}$	0.208 , 0.261 0.212 , 0.264	Depositor DCC
$R_{free}$ test set	1609 reflections (5.35%)	DCC
Wilson B-factor (Å <sup>2</sup> )	34.2	Xtriage
Anisotropy	0.805	Xtriage
Bulk solvent $k_{sol}$ (e/Å <sup>3</sup> ), $B_{sol}$ (Å <sup>2</sup> )	0.36 , 52.9	EDS
Estimated twinning fraction	No twinning to report.	Xtriage
L-test for twinning <sup>2</sup>	$\langle  L  \rangle = 0.47$ , $\langle L^2 \rangle = 0.30$	Xtriage
Outliers	0 of 31715 reflections	Xtriage
$F_o, F_c$ correlation	0.94	EDS
Total number of atoms	4745	wwPDB-VP
Average B, all atoms (Å <sup>2</sup> )	43.0	wwPDB-VP

Xtriage's analysis on translational NCS is as follows: *The largest off-origin peak in the Patterson function is 3.58% of the height of the origin peak. No significant pseudotranslation is detected.*

<sup>1</sup>Intensities estimated from amplitudes.

<sup>2</sup>Theoretical values of  $\langle |L| \rangle$ ,  $\langle L^2 \rangle$  for acentric reflections are 0.5, 0.375 respectively for untwinned datasets, and 0.333, 0.2 for perfectly twinned datasets.

## 5 Model quality

### 5.1 Standard geometry

Bond lengths and bond angles in the following residue types are not validated in this section: FT1, NAD

The Z score for a bond length (or angle) is the number of standard deviations the observed value is removed from the expected value. A bond length (or angle) with  $|Z| > 5$  is considered an outlier worth inspection. RMSZ is the root-mean-square of all Z scores of the bond lengths (or angles).

Mol	Chain	Bond lengths		Bond angles	
		RMSZ	$\# Z  > 5$	RMSZ	$\# Z  > 5$
1	A	0.65	0/2242	0.75	0/3035
1	B	0.63	0/2252	0.72	0/3048
All	All	0.64	0/4494	0.73	0/6083

There are no bond length outliers.

There are no bond angle outliers.

There are no chirality outliers.

There are no planarity outliers.

### 5.2 Too-close contacts

In the following table, the Non-H and H(model) columns list the number of non-hydrogen atoms and hydrogen atoms in the chain respectively. The H(added) column lists the number of hydrogen atoms added and optimized by MolProbity. The Clashes column lists the number of clashes within the asymmetric unit, whereas Symm-Clashes lists symmetry related clashes.

Mol	Chain	Non-H	H(model)	H(added)	Clashes	Symm-Clashes
1	A	2201	0	2150	51	0
1	B	2208	0	2161	61	0
2	A	44	0	26	3	0
2	B	44	0	26	5	0
3	A	18	0	8	3	0
3	B	18	0	8	2	0
4	A	114	0	0	8	0
4	B	98	0	0	4	0
All	All	4745	0	4379	114	0

The all-atom clashscore is defined as the number of clashes found per 1000 atoms (including hydrogen atoms). The all-atom clashscore for this structure is 13.

All (114) close contacts within the same asymmetric unit are listed below, sorted by their clash magnitude.

Atom-1	Atom-2	Interatomic distance (Å)	Clash overlap (Å)
1:A:120:SER:HB3	1:A:153:ILE:HD11	1.34	1.03
1:A:157:LYS:HA	4:A:91:HOH:O	1.71	0.90
1:B:117:LYS:HG2	1:B:159:MET:CE	2.05	0.87
1:A:120:SER:HB3	1:A:153:ILE:CD1	2.07	0.84
1:B:117:LYS:HG2	1:B:159:MET:HE1	1.59	0.83
1:A:148:ASP:HA	1:A:151:MET:HE2	1.64	0.80
1:B:252:PHE:O	1:B:256:MET:HG3	1.83	0.77
1:A:148:ASP:HA	1:A:151:MET:CE	2.19	0.73
1:B:153:ILE:O	1:B:154:ASP:OD2	2.10	0.70
1:B:416:GLY:O	1:B:419:ILE:HG12	1.92	0.69
1:A:117:LYS:HG3	1:A:159:MET:HE1	1.77	0.67
1:B:218:ASN:HD22	1:B:219:ALA:H	1.43	0.66
1:A:120:SER:CB	1:A:153:ILE:HD11	2.21	0.66
1:B:320:ALA:HB1	1:B:369:ILE:HG13	1.80	0.64
1:B:154:ASP:CG	1:B:155:LYS:H	2.00	0.64
1:A:218:ASN:HD22	1:A:219:ALA:H	1.46	0.64
1:A:320:ALA:HB1	1:A:369:ILE:CG1	2.28	0.63
1:A:320:ALA:HB1	1:A:369:ILE:HG13	1.79	0.63
2:B:901:NAD:H52N	3:B:902:FT1:CL9	2.36	0.62
1:B:245:LEU:HD12	1:B:288:LEU:HD12	1.82	0.62
1:A:126:ILE:HG21	1:A:128:PHE:CE2	2.34	0.62
1:A:223:GLN:H	1:A:223:GLN:NE2	1.97	0.61
1:B:320:ALA:HB1	1:B:369:ILE:CG1	2.31	0.61
1:A:301:ARG:HH11	1:A:301:ARG:HG3	1.68	0.59
1:A:384:GLN:HB3	4:A:432:HOH:O	2.03	0.59
1:B:117:LYS:HG2	1:B:159:MET:HE2	1.83	0.58
1:B:154:ASP:CG	1:B:155:LYS:N	2.56	0.58
1:B:126:ILE:HG21	1:B:128:PHE:HE2	1.68	0.58
1:A:384:GLN:HE22	1:B:404:ARG:HG2	1.69	0.57
1:A:384:GLN:N	4:A:442:HOH:O	2.37	0.57
1:B:139:MET:SD	1:B:164:MET:HE1	2.45	0.57
1:B:401:ARG:CZ	1:B:404:ARG:HG3	2.35	0.57
2:B:901:NAD:O1N	2:B:901:NAD:H2N	2.06	0.56
1:A:252:PHE:O	1:A:256:MET:HG3	2.05	0.55
2:B:901:NAD:O1N	2:B:901:NAD:N7N	2.30	0.55
1:B:391:ILE:HD12	1:B:413:VAL:CG1	2.37	0.55
1:B:126:ILE:HG21	1:B:128:PHE:CE2	2.41	0.55
1:A:218:ASN:HD22	1:A:219:ALA:N	2.05	0.53
1:A:144:ASN:ND2	4:A:455:HOH:O	2.40	0.53
1:B:424:ASP:OD2	1:B:424:ASP:N	2.39	0.53

*Continued on next page...*



*Continued from previous page...*

Atom-1	Atom-2	Interatomic distance (Å)	Clash overlap (Å)
1:B:111:TYR:CE1	1:B:391:ILE:HG12	2.43	0.53
1:A:169:ALA:HB1	1:A:244:SER:HB2	1.90	0.53
1:A:126:ILE:HG21	1:A:128:PHE:HE2	1.74	0.52
2:A:801:NAD:O1N	2:A:801:NAD:H2N	2.09	0.52
1:B:138:PHE:HE2	1:B:164:MET:CE	2.23	0.51
1:B:138:PHE:CE2	1:B:164:MET:HE3	2.46	0.51
1:A:301:ARG:HH21	1:B:379:TYR:HA	1.75	0.50
1:B:391:ILE:HD12	1:B:413:VAL:HG11	1.92	0.50
1:A:111:TYR:CE1	1:A:391:ILE:HD13	2.47	0.50
1:B:369:ILE:HD12	1:B:373:ILE:HD11	1.94	0.50
1:B:177:ILE:HD11	1:B:194:THR:CG2	2.42	0.50
1:A:131:TRP:HA	1:A:167:PHE:O	2.11	0.50
1:A:126:ILE:CG2	1:A:128:PHE:CE2	2.95	0.49
1:B:126:ILE:CG2	1:B:128:PHE:CE2	2.96	0.49
1:B:404:ARG:HD3	4:B:454:HOH:O	2.13	0.49
1:B:137:ILE:HG22	4:B:430:HOH:O	2.12	0.49
1:B:186:ARG:NH1	4:B:38:HOH:O	2.45	0.48
1:B:422:LEU:HB2	1:B:423:PRO:HD2	1.95	0.48
1:A:301:ARG:NH1	1:A:301:ARG:HG3	2.27	0.48
1:A:383:ARG:C	4:A:442:HOH:O	2.51	0.48
1:A:301:ARG:NH2	1:B:379:TYR:HA	2.28	0.48
1:B:302:ASN:ND2	4:B:476:HOH:O	2.46	0.47
1:A:220:LYS:HD3	1:A:233:GLY:HA2	1.98	0.46
1:A:117:LYS:HG3	1:A:159:MET:CE	2.43	0.46
1:B:263:ILE:CD1	1:B:395:ALA:HB1	2.44	0.46
1:B:138:PHE:HE2	1:B:164:MET:HE3	1.80	0.46
1:B:262:ILE:O	1:B:307:ILE:HA	2.15	0.46
1:B:131:TRP:HA	1:B:167:PHE:O	2.16	0.46
1:A:161:ILE:HD13	1:A:164:MET:HE2	1.97	0.46
1:A:382:LEU:HD11	1:B:306:ARG:HG2	1.98	0.46
1:A:158:LYS:O	1:A:159:MET:C	2.54	0.45
1:A:301:ARG:HH21	1:B:379:TYR:C	2.19	0.45
1:B:222:VAL:HA	1:B:279:GLY:HA3	1.98	0.45
1:B:138:PHE:CE2	1:B:164:MET:CE	2.99	0.45
1:B:218:ASN:HD22	1:B:219:ALA:N	2.13	0.45
1:A:146:LYS:HE2	4:A:449:HOH:O	2.16	0.44
1:A:379:TYR:HA	1:B:301:ARG:NH2	2.32	0.44
1:B:263:ILE:HD11	1:B:395:ALA:HB1	2.00	0.44
1:A:217:ALA:HB3	3:A:802:FT1:CL9	2.55	0.44
1:B:210:ASN:HA	1:B:260:SER:OG	2.18	0.44
1:A:320:ALA:HB1	1:A:369:ILE:HG12	1.99	0.44

*Continued on next page...*

*Continued from previous page...*

Atom-1	Atom-2	Interatomic distance (Å)	Clash overlap (Å)
1:B:310:ILE:HG23	1:B:413:VAL:HG23	2.00	0.44
2:B:901:NAD:H2D	3:B:902:FT1:O7	2.17	0.43
1:B:306:ARG:NH1	1:B:403:SER:O	2.50	0.43
1:A:117:LYS:HE2	4:A:57:HOH:O	2.18	0.43
1:A:397:PHE:CZ	1:A:403:SER:HB3	2.54	0.43
2:A:801:NAD:O1N	2:A:801:NAD:N7N	2.45	0.43
1:A:384:GLN:OE1	4:A:432:HOH:O	2.21	0.43
2:B:901:NAD:H51N	2:B:901:NAD:H52A	2.00	0.43
1:B:208:LYS:HA	1:B:255:ILE:O	2.18	0.43
1:B:382:LEU:HB2	1:B:415:ASN:HB3	2.01	0.43
1:A:122:ARG:HD3	1:A:396:SER:OG	2.19	0.42
1:A:132:PRO:HD3	1:A:167:PHE:O	2.19	0.42
1:A:117:LYS:HG2	1:A:159:MET:HE2	2.00	0.42
1:B:205:LYS:HB2	1:B:206:TYR:CD1	2.54	0.42
1:B:186:ARG:HH11	1:B:186:ARG:HG2	1.85	0.41
1:A:375:TYR:OH	1:A:423:PRO:HD3	2.20	0.41
1:B:159:MET:HB2	1:B:159:MET:HE3	1.68	0.41
1:B:373:ILE:O	1:B:377:GLU:HG3	2.19	0.41
1:A:265:LEU:HD23	1:A:310:ILE:HB	2.03	0.41
1:A:258:PRO:O	1:A:259:GLN:HB2	2.19	0.41
1:B:238:LEU:HD13	1:B:238:LEU:HA	1.96	0.41
1:B:121:LYS:HG2	1:B:153:ILE:HG21	2.02	0.41
1:A:117:LYS:CG	1:A:159:MET:CE	2.99	0.41
1:A:378:LYS:HD3	1:A:379:TYR:CE1	2.56	0.41
1:A:416:GLY:O	1:A:419:ILE:HG12	2.21	0.41
1:B:369:ILE:HD12	1:B:373:ILE:CD1	2.51	0.41
1:B:245:LEU:HD12	1:B:288:LEU:CD1	2.50	0.41
2:A:801:NAD:H3D	3:A:802:FT1:CL9	2.58	0.41
1:B:214:HIS:O	1:B:264:SER:HA	2.21	0.41
1:A:267:TYR:CZ	3:A:802:FT1:H14	2.56	0.40
1:B:320:ALA:HB1	1:B:369:ILE:HG12	2.01	0.40
1:B:189:MET:HB3	1:B:189:MET:HE3	1.96	0.40
1:B:414:ASP:O	1:B:415:ASN:HB2	2.22	0.40

There are no symmetry-related clashes.

## 5.3 Torsion angles

### 5.3.1 Protein backbone

In the following table, the Percentiles column shows the percent Ramachandran outliers of the chain as a percentile score with respect to all X-ray entries followed by that with respect to entries of similar resolution.

The Analysed column shows the number of residues for which the backbone conformation was analysed, and the total number of residues.

Mol	Chain	Analysed	Favoured	Allowed	Outliers	Percentiles	
1	A	284/329 (86%)	270 (95%)	13 (5%)	1 (0%)	39	48
1	B	284/329 (86%)	263 (93%)	20 (7%)	1 (0%)	39	48
All	All	568/658 (86%)	533 (94%)	33 (6%)	2 (0%)	39	48

All (2) Ramachandran outliers are listed below:

Mol	Chain	Res	Type
1	B	156	ASP
1	A	155	LYS

### 5.3.2 Protein sidechains

In the following table, the Percentiles column shows the percent sidechain outliers of the chain as a percentile score with respect to all X-ray entries followed by that with respect to entries of similar resolution.

The Analysed column shows the number of residues for which the sidechain conformation was analysed, and the total number of residues.

Mol	Chain	Analysed	Rotameric	Outliers	Percentiles	
1	A	230/289 (80%)	212 (92%)	18 (8%)	16	19
1	B	233/289 (81%)	223 (96%)	10 (4%)	35	47
All	All	463/578 (80%)	435 (94%)	28 (6%)	23	31

All (28) residues with a non-rotameric sidechain are listed below:

Mol	Chain	Res	Type
1	A	137	ILE
1	A	139	MET
1	A	154	ASP
1	A	162	LEU

*Continued on next page...*

*Continued from previous page...*

Mol	Chain	Res	Type
1	A	186	ARG
1	A	191	GLN
1	A	218	ASN
1	A	220	LYS
1	A	223	GLN
1	A	227	LEU
1	A	245	LEU
1	A	248	LEU
1	A	283	SER
1	A	369	ILE
1	A	372	MET
1	A	383	ARG
1	A	402	GLU
1	A	422	LEU
1	B	120	SER
1	B	189	MET
1	B	191	GLN
1	B	218	ASN
1	B	227	LEU
1	B	245	LEU
1	B	369	ILE
1	B	372	MET
1	B	401	ARG
1	B	422	LEU

Some sidechains can be flipped to improve hydrogen bonding and reduce clashes. All (11) such sidechains are listed below:

Mol	Chain	Res	Type
1	A	144	ASN
1	A	218	ASN
1	A	223	GLN
1	A	304	ASN
1	A	384	GLN
1	B	191	GLN
1	B	200	ASN
1	B	218	ASN
1	B	259	GLN
1	B	304	ASN
1	B	384	GLN

### 5.3.3 RNA ⓘ

There are no RNA molecules in this entry.

## 5.4 Non-standard residues in protein, DNA, RNA chains ⓘ

There are no non-standard protein/DNA/RNA residues in this entry.

## 5.5 Carbohydrates ⓘ

There are no carbohydrates in this entry.

## 5.6 Ligand geometry ⓘ

4 ligands are modelled in this entry.

In the following table, the Counts columns list the number of bonds (or angles) for which Mogul statistics could be retrieved, the number of bonds (or angles) that are observed in the model and the number of bonds (or angles) that are defined in the chemical component dictionary. The Link column lists molecule types, if any, to which the group is linked. The Z score for a bond length (or angle) is the number of standard deviations the observed value is removed from the expected value. A bond length (or angle) with  $|Z| > 2$  is considered an outlier worth inspection. RMSZ is the root-mean-square of all Z scores of the bond lengths (or angles).

Mol	Type	Chain	Res	Link	Bond lengths			Bond angles		
					Counts	RMSZ	# $ Z  > 2$	Counts	RMSZ	# $ Z  > 2$
2	NAD	A	801	-	38,48,48	1.46	2 (5%)	47,73,73	2.07	9 (19%)
3	FT1	A	802	-	19,19,19	1.03	2 (10%)	26,26,26	0.76	1 (3%)
2	NAD	B	901	-	38,48,48	1.48	3 (7%)	47,73,73	2.04	6 (12%)
3	FT1	B	902	-	19,19,19	0.93	0	26,26,26	1.24	4 (15%)

In the following table, the Chirals column lists the number of chiral outliers, the number of chiral centers analysed, the number of these observed in the model and the number defined in the chemical component dictionary. Similar counts are reported in the Torsion and Rings columns. '-' means no outliers of that kind were identified.

Mol	Type	Chain	Res	Link	Chirals	Torsions	Rings
2	NAD	A	801	-	-	0/22/62/62	0/5/5/5
3	FT1	A	802	-	-	0/6/6/6	0/2/2/2
2	NAD	B	901	-	-	0/22/62/62	0/5/5/5
3	FT1	B	902	-	-	0/6/6/6	0/2/2/2

All (7) bond length outliers are listed below:

Mol	Chain	Res	Type	Atoms	Z	Observed(Å)	Ideal(Å)
2	B	901	NAD	O4D-C1D	2.09	1.43	1.41
3	A	802	FT1	C11-CL1	2.46	1.80	1.74
3	A	802	FT1	C9-CL9	2.55	1.79	1.73
2	A	801	NAD	C5N-C4N	3.51	1.46	1.38
2	B	901	NAD	C5N-C4N	3.61	1.46	1.38
2	A	801	NAD	C4N-C3N	7.13	1.51	1.39
2	B	901	NAD	C4N-C3N	7.13	1.51	1.39

All (20) bond angle outliers are listed below:

Mol	Chain	Res	Type	Atoms	Z	Observed(°)	Ideal(°)
2	B	901	NAD	N3A-C2A-N1A	-8.65	122.27	128.89
2	A	801	NAD	N3A-C2A-N1A	-8.55	122.35	128.89
2	A	801	NAD	C5N-C4N-C3N	-6.68	111.94	120.33
2	B	901	NAD	C5N-C4N-C3N	-6.41	112.27	120.33
2	A	801	NAD	PN-O3-PA	-3.99	121.53	132.73
2	B	901	NAD	PN-O3-PA	-3.94	121.67	132.73
3	B	902	FT1	C10-C11-CL1	-2.45	116.10	119.14
2	B	901	NAD	C2B-C1B-N9A	-2.29	110.80	114.29
2	A	801	NAD	C2B-C1B-N9A	-2.17	110.98	114.29
2	A	801	NAD	C4A-C5A-N7A	-2.16	107.50	109.48
2	A	801	NAD	C4B-O4B-C1B	-2.07	107.44	109.72
3	B	902	FT1	C10-C9-CL9	-2.05	115.34	118.50
3	A	802	FT1	O7-C1-C2	2.02	120.08	116.12
3	B	902	FT1	C12-C11-CL1	2.16	122.89	119.35
2	B	901	NAD	C2N-C3N-C4N	2.34	120.89	118.29
2	A	801	NAD	O4B-C1B-N9A	2.48	113.28	108.10
2	A	801	NAD	C2N-C3N-C4N	2.55	121.12	118.29
3	B	902	FT1	C8-C9-CL9	3.64	123.91	119.42
2	A	801	NAD	O4D-C1D-N1N	3.85	112.36	108.13
2	B	901	NAD	O4D-C1D-N1N	4.29	112.84	108.13

There are no chirality outliers.

There are no torsion outliers.

There are no ring outliers.

4 monomers are involved in 10 short contacts:

Mol	Chain	Res	Type	Clashes	Symm-Clashes
2	A	801	NAD	3	0
3	A	802	FT1	3	0

*Continued on next page...*

*Continued from previous page...*

Mol	Chain	Res	Type	Clashes	Symm-Clashes
2	B	901	NAD	5	0
3	B	902	FT1	2	0

## 5.7 Other polymers [i](#)

There are no such residues in this entry.

## 5.8 Polymer linkage issues [i](#)

There are no chain breaks in this entry.

## 6 Fit of model and data [i](#)

### 6.1 Protein, DNA and RNA chains [i](#)

In the following table, the column labelled ‘#RSRZ> 2’ contains the number (and percentage) of RSRZ outliers, followed by percent RSRZ outliers for the chain as percentile scores relative to all X-ray entries and entries of similar resolution. The OWAB column contains the minimum, median, 95<sup>th</sup> percentile and maximum values of the occupancy-weighted average B-factor per residue. The column labelled ‘Q< 0.9’ lists the number of (and percentage) of residues with an average occupancy less than 0.9.

Mol	Chain	Analysed	<RSRZ>	#RSRZ>2	OWAB(Å <sup>2</sup> )	Q<0.9
1	A	287/329 (87%)	-0.01	3 (1%) 84 88	27, 41, 63, 76	5 (1%)
1	B	287/329 (87%)	0.30	16 (5%) 28 36	23, 42, 68, 85	3 (1%)
All	All	574/658 (87%)	0.15	19 (3%) 50 59	23, 41, 67, 85	8 (1%)

All (19) RSRZ outliers are listed below:

Mol	Chain	Res	Type	RSRZ
1	B	156	ASP	7.0
1	B	155	LYS	5.9
1	B	137	ILE	4.8
1	B	153	ILE	4.8
1	B	152	ILE	4.7
1	B	154	ASP	3.9
1	B	150	ASP	3.4
1	B	157	LYS	3.3
1	B	96	ASN	2.9
1	B	141	ASN	2.9
1	A	96	ASN	2.9
1	B	159	MET	2.6
1	A	184	ASN	2.6
1	B	158	LYS	2.5
1	B	149	ASN	2.3
1	A	183	ASN	2.2
1	B	148	ASP	2.2
1	B	145	GLY	2.1
1	B	113	TRP	2.0

### 6.2 Non-standard residues in protein, DNA, RNA chains [i](#)

There are no non-standard protein/DNA/RNA residues in this entry.



### 6.3 Carbohydrates [i](#)

There are no carbohydrates in this entry.

### 6.4 Ligands [i](#)

In the following table, the Atoms column lists the number of modelled atoms in the group and the number defined in the chemical component dictionary. LLDF column lists the quality of electron density of the group with respect to its neighbouring residues in protein, DNA or RNA chains. The B-factors column lists the minimum, median, 95<sup>th</sup> percentile and maximum values of B factors of atoms in the group. The column labelled 'Q< 0.9' lists the number of atoms with occupancy less than 0.9.

Mol	Type	Chain	Res	Atoms	RSCC	RSR	LLDF	B-factors( $\text{\AA}^2$ )	Q<0.9
2	NAD	A	801	44/44	0.94	0.14	0.94	41,47,50,52	0
3	FT1	B	902	18/18	0.96	0.14	0.86	52,54,57,58	0
2	NAD	B	901	44/44	0.93	0.15	0.53	49,57,62,64	0
3	FT1	A	802	18/18	0.97	0.13	0.34	45,49,54,54	0

### 6.5 Other polymers [i](#)

There are no such residues in this entry.