



Full wwPDB X-ray Structure Validation Report ⓘ

Feb 1, 2016 – 07:24 AM GMT

PDB ID : 3AML
Title : Structure of the Starch Branching Enzyme I (BEI) from Oryza sativa L
Authors : Kakuta, Y.; Chaen, K.; Noguchi, J.; Vu, N.; Kimura, M.
Deposited on : 2010-08-20
Resolution : 1.70 Å(reported)

This is a Full wwPDB X-ray Structure Validation Report for a publicly released PDB entry.
We welcome your comments at validation@mail.wwpdb.org
A user guide is available at
<http://wwpdb.org/validation/2016/XrayValidationReportHelp>
with specific help available everywhere you see the ⓘ symbol.

The following versions of software and data (see [references ⓘ](#)) were used in the production of this report:

MolProbity : 4.02b-467
Mogul : 1.7 (RC4), CSD as536be (2015)
Xtriage (Phenix) : 1.9-1692
EDS : rb-20026688
Percentile statistics : 20151230.v01 (using entries in the PDB archive December 30th 2015)
Refmac : 5.8.0135
CCP4 : 6.5.0
Ideal geometry (proteins) : Engh & Huber (2001)
Ideal geometry (DNA, RNA) : Parkinson et al. (1996)
Validation Pipeline (wwPDB-VP) : trunk26865

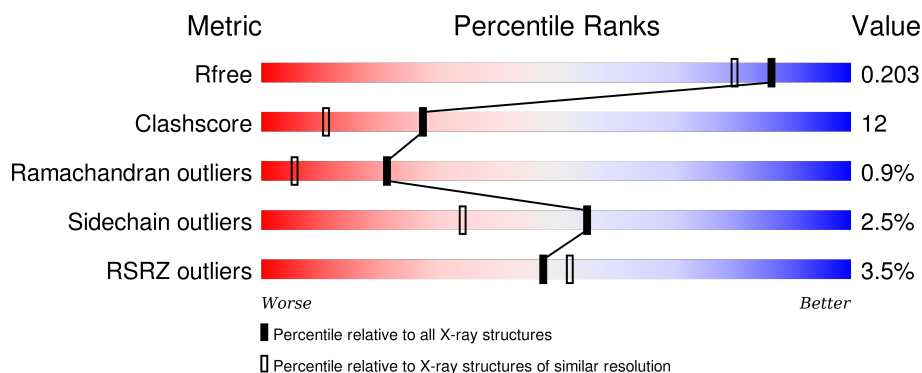
1 Overall quality at a glance

The following experimental techniques were used to determine the structure:

X-RAY DIFFRACTION

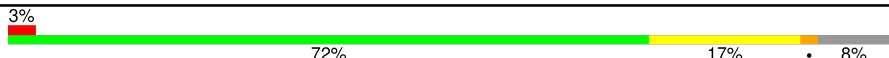
The reported resolution of this entry is 1.70 Å.

Percentile scores (ranging between 0-100) for global validation metrics of the entry are shown in the following graphic. The table shows the number of entries on which the scores are based.



Metric	Whole archive (#Entries)	Similar resolution (#Entries, resolution range(Å))
R_{free}	91344	3190 (1.70-1.70)
Clashscore	102246	3585 (1.70-1.70)
Ramachandran outliers	100387	3527 (1.70-1.70)
Sidechain outliers	100360	3527 (1.70-1.70)
RSRZ outliers	91569	3200 (1.70-1.70)

The table below summarises the geometric issues observed across the polymeric chains and their fit to the electron density. The red, orange, yellow and green segments on the lower bar indicate the fraction of residues that contain outliers for ≥ 3 , 2, 1 and 0 types of geometric quality criteria. A grey segment represents the fraction of residues that are not modelled. The numeric value for each fraction is indicated below the corresponding segment, with a dot representing fractions $\leq 5\%$. The upper red bar (where present) indicates the fraction of residues that have poor fit to the electron density. The numeric value is given above the bar.

Mol	Chain	Length	Quality of chain
1	A	755	

The following table lists non-polymeric compounds, carbohydrate monomers and non-standard residues in protein, DNA, RNA chains that are outliers for geometric or electron-density-fit criteria:

Mol	Type	Chain	Res	Chirality	Geometry	Clashes	Electron density
2	BME	A	756	-	-	X	-

Continued on next page...

Continued from previous page...

Mol	Type	Chain	Res	Chirality	Geometry	Clashes	Electron density
3	GOL	A	757	-	-	-	X
3	GOL	A	762	-	-	-	X
3	GOL	A	764	-	-	-	X
3	GOL	A	767	-	-	-	X
3	GOL	A	768	-	-	-	X
3	GOL	A	769	-	-	-	X
3	GOL	A	770	-	-	-	X
3	GOL	A	776	-	-	-	X
3	GOL	A	777	-	-	-	X
3	GOL	A	778	-	-	-	X
3	GOL	A	780	-	-	-	X
3	GOL	A	781	-	-	-	X
3	GOL	A	782	-	-	-	X
3	GOL	A	784	-	-	-	X
3	GOL	A	785	-	-	-	X
3	GOL	A	786	-	-	-	X
3	GOL	A	787	-	-	X	X
3	GOL	A	788	-	-	-	X
3	GOL	A	790	-	-	-	X
3	GOL	A	791	-	-	-	X
3	GOL	A	792	-	-	-	X
4	EPE	A	758	-	-	-	X
6	SIN	A	766	-	-	X	X
6	SIN	A	789	-	-	-	X

2 Entry composition [i](#)

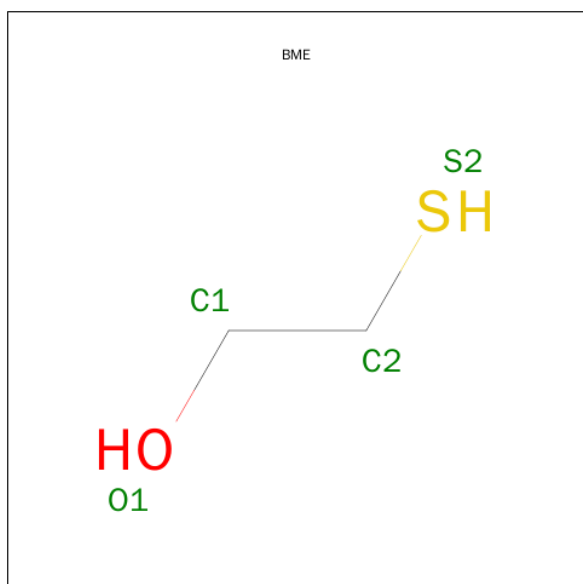
There are 7 unique types of molecules in this entry. The entry contains 6781 atoms, of which 0 are hydrogens and 0 are deuteriums.

In the tables below, the ZeroOcc column contains the number of atoms modelled with zero occupancy, the AltConf column contains the number of residues with at least one atom in alternate conformation and the Trace column contains the number of residues modelled with at most 2 atoms.

- Molecule 1 is a protein called Os06g0726400 protein.

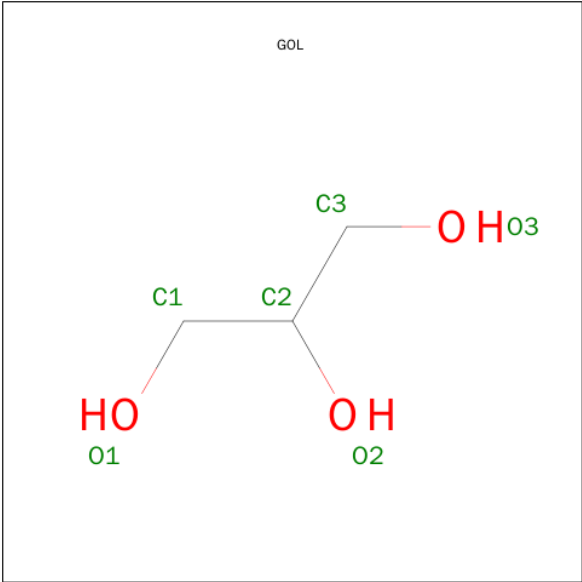
Mol	Chain	Residues	Atoms					ZeroOcc	AltConf	Trace
			Total	C	N	O	S			
1	A	693	5858	3760	1004	1054	40	0	38	0

- Molecule 2 is BETA-MERCAPTOETHANOL (three-letter code: BME) (formula: C_2H_6OS).



Mol	Chain	Residues	Atoms				ZeroOcc	AltConf
			Total	C	O	S		
2	A	1	4	2	1	1	0	0
2	A	1	4	2	1	1	0	0

- Molecule 3 is GLYCEROL (three-letter code: GOL) (formula: $C_3H_8O_3$).



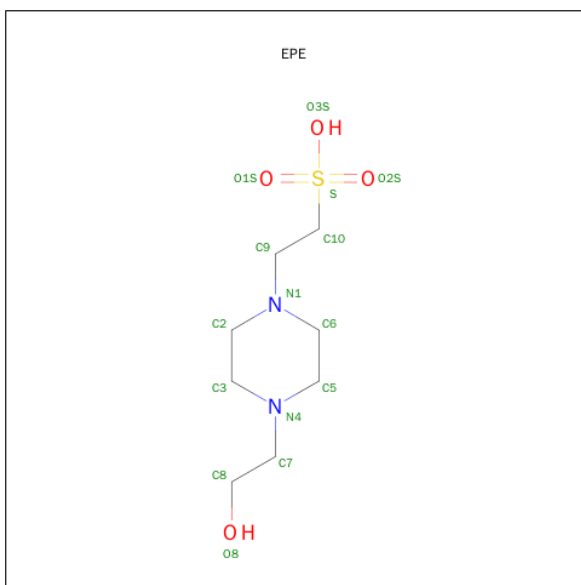
Mol	Chain	Residues	Atoms			ZeroOcc	AltConf
3	A	1	Total	C	O	0	0
			6	3	3		
3	A	1	Total	C	O	0	0
			6	3	3		
3	A	1	Total	C	O	0	0
			6	3	3		
3	A	1	Total	C	O	0	0
			6	3	3		
3	A	1	Total	C	O	0	0
			6	3	3		
3	A	1	Total	C	O	0	0
			6	3	3		
3	A	1	Total	C	O	0	0
			6	3	3		
3	A	1	Total	C	O	0	0
			6	3	3		
3	A	1	Total	C	O	0	0
			6	3	3		

Continued on next page...

Continued from previous page...

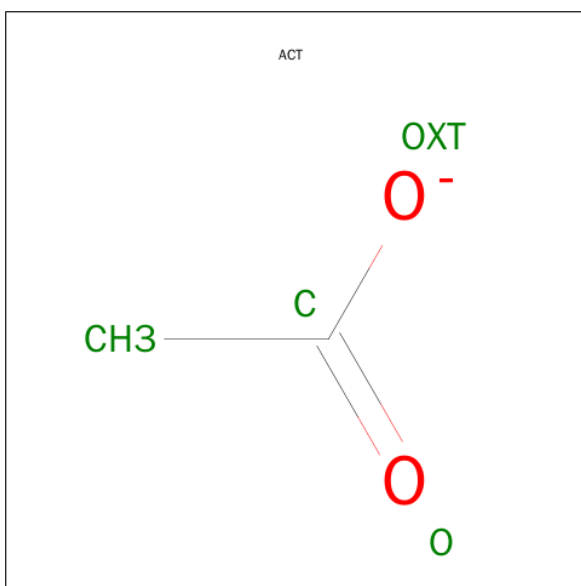
Mol	Chain	Residues	Atoms			ZeroOcc	AltConf
3	A	1	Total	C	O	0	0
			6	3	3		
3	A	1	Total	C	O	0	0
			6	3	3		
3	A	1	Total	C	O	0	0
			6	3	3		
3	A	1	Total	C	O	0	0
			6	3	3		
3	A	1	Total	C	O	0	0
			6	3	3		
3	A	1	Total	C	O	0	0
			6	3	3		
3	A	1	Total	C	O	0	0
			6	3	3		
3	A	1	Total	C	O	0	0
			6	3	3		
3	A	1	Total	C	O	0	0
			6	3	3		
3	A	1	Total	C	O	0	0
			6	3	3		
3	A	1	Total	C	O	0	0
			6	3	3		
3	A	1	Total	C	O	0	0
			6	3	3		
3	A	1	Total	C	O	0	0
			6	3	3		
3	A	1	Total	C	O	0	0
			6	3	3		

- Molecule 4 is 4-(2-HYDROXYETHYL)-1-PIPERAZINE ETHANESULFONIC ACID (three-letter code: EPE) (formula: C₈H₁₈N₂O₄S).



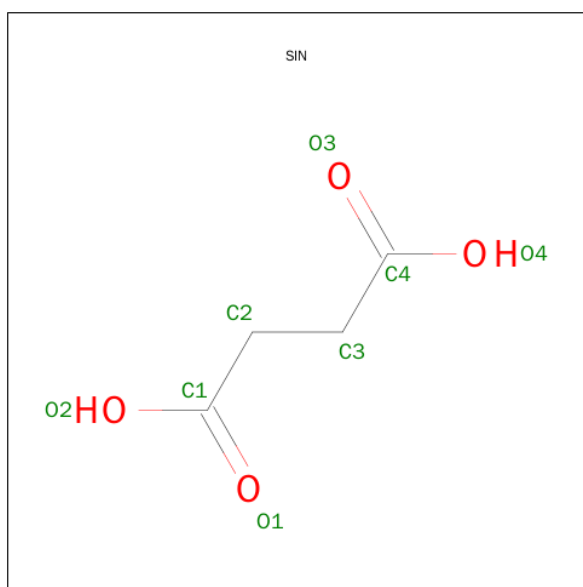
Mol	Chain	Residues	Atoms					ZeroOcc	AltConf
4	A	1	Total	C	N	O	S	0	0
			15	8	2	4	1		

- Molecule 5 is ACETATE ION (three-letter code: ACT) (formula: $C_2H_3O_2$).



Mol	Chain	Residues	Atoms			ZeroOcc	AltConf
5	A	1	Total	C	O	0	0
			4	2	2		

- Molecule 6 is SUCCINIC ACID (three-letter code: SIN) (formula: $C_4H_6O_4$).



Mol	Chain	Residues	Atoms			ZeroOcc	AltConf
6	A	1	Total	C	O	0	0
			8	4	4		
6	A	1	Total	C	O	0	0
			8	4	4		

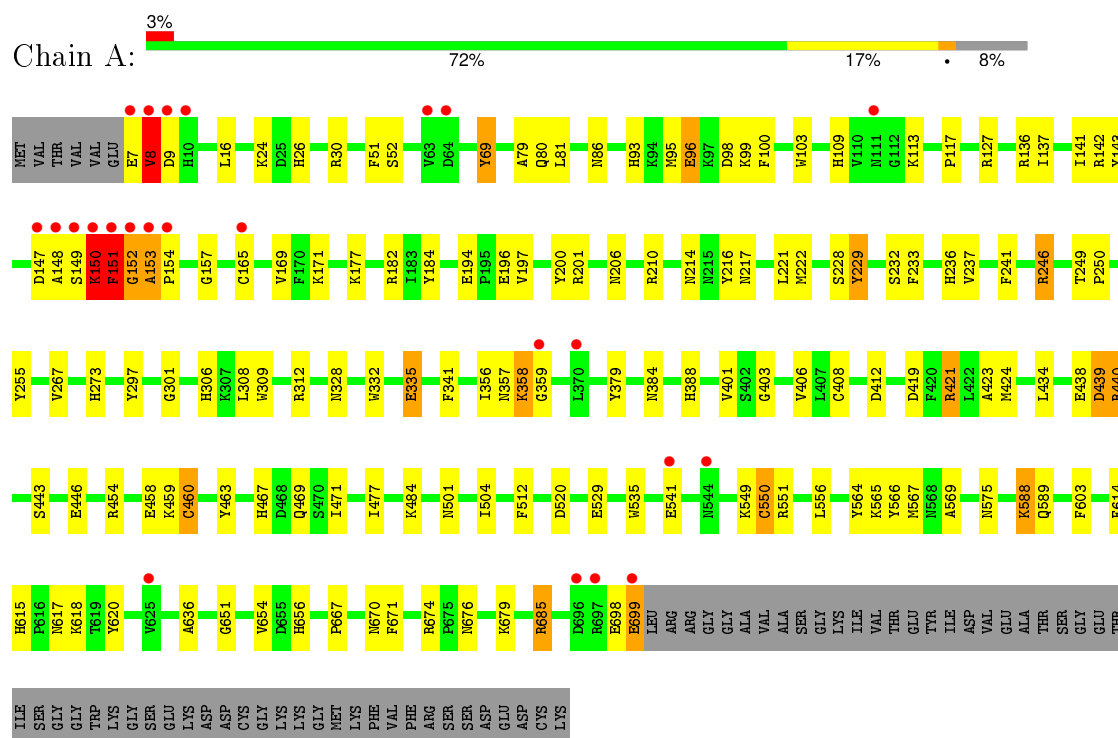
- Molecule 7 is water.

Mol	Chain	Residues	Atoms		ZeroOcc	AltConf
7	A	688	Total	O	0	0
			688	688		

3 Residue-property plots [i](#)

These plots are drawn for all protein, RNA and DNA chains in the entry. The first graphic for a chain summarises the proportions of errors displayed in the second graphic. The second graphic shows the sequence view annotated by issues in geometry and electron density. Residues are color-coded according to the number of geometric quality criteria for which they contain at least one outlier: green = 0, yellow = 1, orange = 2 and red = 3 or more. A red dot above a residue indicates a poor fit to the electron density ($RSRZ > 2$). Stretches of 2 or more consecutive residues without any outlier are shown as a green connector. Residues present in the sample, but not in the model, are shown in grey.

- Molecule 1: Os06g0726400 protein



4 Data and refinement statistics

Property	Value	Source
Space group	P 1 21 1	Depositor
Cell constants a, b, c, α , β , γ	43.07Å 124.85Å 67.88Å 90.00° 97.29° 90.00°	Depositor
Resolution (Å)	21.12 – 1.70 21.12 – 1.70	Depositor EDS
% Data completeness (in resolution range)	99.5 (21.12-1.70) 99.5 (21.12-1.70)	Depositor EDS
R_{merge}	0.09	Depositor
R_{sym}	0.09	Depositor
$\langle I/\sigma(I) \rangle$ ¹	2.13 (at 1.69Å)	Xtriage
Refinement program	REFMAC 5.5.0102	Depositor
R, R_{free}	0.146 , 0.196 0.154 , 0.203	Depositor DCC
R_{free} test set	3915 reflections (5.29%)	DCC
Wilson B-factor (Å ²)	18.9	Xtriage
Anisotropy	0.131	Xtriage
Bulk solvent k_{sol} (e/Å ³), B_{sol} (Å ²)	0.38 , 44.8	EDS
Estimated twinning fraction	No twinning to report.	Xtriage
L-test for twinning ²	$\langle L \rangle = 0.50$, $\langle L^2 \rangle = 0.33$	Xtriage
Outliers	0 of 78189 reflections	Xtriage
F_o, F_c correlation	0.97	EDS
Total number of atoms	6781	wwPDB-VP
Average B, all atoms (Å ²)	23.0	wwPDB-VP

Xtriage's analysis on translational NCS is as follows: *The largest off-origin peak in the Patterson function is 5.00% of the height of the origin peak. No significant pseudotranslation is detected.*

¹Intensities estimated from amplitudes.

²Theoretical values of $\langle |L| \rangle$, $\langle L^2 \rangle$ for acentric reflections are 0.5, 0.375 respectively for untwinned datasets, and 0.333, 0.2 for perfectly twinned datasets.

5 Model quality

5.1 Standard geometry

Bond lengths and bond angles in the following residue types are not validated in this section: EPE, GOL, ACT, SIN, BME

The Z score for a bond length (or angle) is the number of standard deviations the observed value is removed from the expected value. A bond length (or angle) with $|Z| > 5$ is considered an outlier worth inspection. RMSZ is the root-mean-square of all Z scores of the bond lengths (or angles).

Mol	Chain	Bond lengths		Bond angles	
		RMSZ	$\# Z > 5$	RMSZ	$\# Z > 5$
1	A	1.40	34/6136 (0.6%)	1.15	26/8291 (0.3%)

Chiral center outliers are detected by calculating the chiral volume of a chiral center and verifying if the center is modelled as a planar moiety or with the opposite hand. A planarity outlier is detected by checking planarity of atoms in a peptide group, atoms in a mainchain group or atoms of a sidechain that are expected to be planar.

Mol	Chain	#Chirality outliers	#Planarity outliers
1	A	0	1

All (34) bond length outliers are listed below:

Mol	Chain	Res	Type	Atoms	Z	Observed(Å)	Ideal(Å)
1	A	96	GLU	CD-OE2	7.32	1.33	1.25
1	A	52	SER	CB-OG	7.01	1.51	1.42
1	A	297	TYR	CE1-CZ	6.94	1.47	1.38
1	A	237	VAL	CB-CG2	6.90	1.67	1.52
1	A	671	PHE	CE2-CZ	6.73	1.50	1.37
1	A	566	TYR	CD2-CE2	6.60	1.49	1.39
1	A	267	VAL	CB-CG2	6.28	1.66	1.52
1	A	550[A]	CYS	CB-SG	-6.25	1.71	1.82
1	A	550[B]	CYS	CB-SG	-6.25	1.71	1.82
1	A	184	TYR	CE1-CZ	6.22	1.46	1.38
1	A	96	GLU	CG-CD	6.22	1.61	1.51
1	A	335	GLU	CB-CG	6.16	1.63	1.52
1	A	332	TRP	CZ3-CH2	6.13	1.49	1.40
1	A	246	ARG	CB-CG	-5.99	1.36	1.52
1	A	301	GLY	N-CA	5.97	1.55	1.46
1	A	194	GLU	CB-CG	5.86	1.63	1.52
1	A	241	PHE	CD2-CE2	5.80	1.50	1.39
1	A	603	PHE	CE2-CZ	5.67	1.48	1.37

Continued on next page...

Continued from previous page...

Mol	Chain	Res	Type	Atoms	Z	Observed(Å)	Ideal(Å)
1	A	69	TYR	CD1-CE1	5.62	1.47	1.39
1	A	143	TYR	CD2-CE2	5.53	1.47	1.39
1	A	184	TYR	CG-CD2	5.33	1.46	1.39
1	A	216	TYR	CG-CD2	5.22	1.46	1.39
1	A	232	SER	CA-CB	5.22	1.60	1.52
1	A	200	TYR	CG-CD2	5.21	1.46	1.39
1	A	229	TYR	CD2-CE2	-5.20	1.31	1.39
1	A	341	PHE	CD1-CE1	5.11	1.49	1.39
1	A	512	PHE	CE1-CZ	5.07	1.47	1.37
1	A	79	ALA	CA-CB	5.07	1.63	1.52
1	A	460[A]	CYS	CB-SG	-5.07	1.73	1.81
1	A	460[B]	CYS	CB-SG	-5.07	1.73	1.81
1	A	312	ARG	CG-CD	5.06	1.64	1.51
1	A	614	PHE	CE1-CZ	5.05	1.47	1.37
1	A	529	GLU	CB-CG	5.05	1.61	1.52
1	A	620	TYR	CE1-CZ	5.00	1.45	1.38

All (26) bond angle outliers are listed below:

Mol	Chain	Res	Type	Atoms	Z	Observed(°)	Ideal(°)
1	A	356	ILE	C-N-CA	-9.55	97.83	121.70
1	A	246	ARG	NE-CZ-NH1	9.15	124.88	120.30
1	A	246	ARG	NE-CZ-NH2	-8.83	115.89	120.30
1	A	142[A]	ARG	NE-CZ-NH1	-7.92	116.34	120.30
1	A	142[B]	ARG	NE-CZ-NH1	-7.92	116.34	120.30
1	A	142[A]	ARG	NE-CZ-NH2	6.75	123.68	120.30
1	A	142[B]	ARG	NE-CZ-NH2	6.75	123.68	120.30
1	A	685	ARG	NE-CZ-NH2	-6.69	116.95	120.30
1	A	98	ASP	CB-CG-OD1	6.66	124.29	118.30
1	A	308	LEU	CA-CB-CG	6.50	130.26	115.30
1	A	221	LEU	CB-CG-CD1	6.12	121.41	111.00
1	A	51	PHE	CB-CG-CD2	-6.11	116.52	120.80
1	A	556	LEU	CB-CG-CD1	-5.96	100.86	111.00
1	A	520	ASP	CB-CG-OD1	-5.85	113.04	118.30
1	A	151	PHE	N-CA-CB	5.80	121.04	110.60
1	A	136	ARG	NE-CZ-NH1	5.71	123.16	120.30
1	A	564	TYR	CB-CG-CD1	-5.59	117.64	121.00
1	A	246	ARG	CG-CD-NE	-5.50	100.25	111.80
1	A	588[A]	LYS	CD-CE-NZ	-5.47	99.12	111.70
1	A	588[B]	LYS	CD-CE-NZ	-5.47	99.12	111.70
1	A	412	ASP	CB-CG-OD1	5.42	123.17	118.30
1	A	184	TYR	CZ-CE2-CD2	-5.39	114.95	119.80

Continued on next page...

Continued from previous page...

Mol	Chain	Res	Type	Atoms	Z	Observed(°)	Ideal(°)
1	A	136	ARG	NE-CZ-NH2	-5.21	117.70	120.30
1	A	439	ASP	CB-CG-OD1	5.13	122.91	118.30
1	A	127	ARG	NE-CZ-NH2	-5.05	117.77	120.30
1	A	551	ARG	NE-CZ-NH2	-5.01	117.79	120.30

There are no chirality outliers.

All (1) planarity outliers are listed below:

Mol	Chain	Res	Type	Group
1	A	150	LYS	Peptide

5.2 Too-close contacts ⓘ

In the following table, the Non-H and H(model) columns list the number of non-hydrogen atoms and hydrogen atoms in the chain respectively. The H(added) column lists the number of hydrogen atoms added and optimized by MolProbity. The Clashes column lists the number of clashes within the asymmetric unit, whereas Symm-Clashes lists symmetry related clashes.

Mol	Chain	Non-H	H(model)	H(added)	Clashes	Symm-Clashes
1	A	5858	0	5698	136	0
2	A	8	0	10	7	0
3	A	192	0	254	30	0
4	A	15	0	17	0	0
5	A	4	0	3	0	0
6	A	16	0	8	4	0
7	A	688	0	0	18	0
All	All	6781	0	5990	144	0

The all-atom clashscore is defined as the number of clashes found per 1000 atoms (including hydrogen atoms). The all-atom clashscore for this structure is 12.

All (144) close contacts within the same asymmetric unit are listed below, sorted by their clash magnitude.

Atom-1	Atom-2	Interatomic distance (Å)	Clash overlap (Å)
1:A:408[B]:CYS:SG	1:A:458:GLU:HB3	1.71	1.28
1:A:438[B]:GLU:OE2	1:A:440[B]:ARG:NH1	1.72	1.20
1:A:153:ALA:HB1	1:A:154:PRO:HA	1.19	1.19
1:A:438[B]:GLU:OE1	1:A:440[B]:ARG:NH2	1.93	1.00
1:A:153:ALA:HB1	1:A:154:PRO:CA	1.91	0.99

Continued on next page...

Continued from previous page...

Atom-1	Atom-2	Interatomic distance (Å)	Clash overlap (Å)
1:A:153:ALA:CB	1:A:154:PRO:HA	1.95	0.96
1:A:460[B]:CYS:SG	2:A:756:BME:H22	2.07	0.94
1:A:460[B]:CYS:SG	2:A:756:BME:S2	2.67	0.93
1:A:408[B]:CYS:SG	1:A:458:GLU:CB	2.56	0.93
1:A:150:LYS:O	1:A:151:PHE:CD1	2.24	0.90
1:A:26:HIS:HE1	1:A:30:ARG:HH21	1.11	0.90
1:A:438[B]:GLU:CD	1:A:440[B]:ARG:HH12	1.76	0.88
1:A:467:HIS:HD2	1:A:469:GLN:H	1.20	0.87
1:A:698:GLU:O	1:A:699[B]:GLU:HG2	1.76	0.86
1:A:7:GLU:HA	1:A:8:VAL:HB	1.56	0.85
1:A:460[B]:CYS:SG	2:A:756:BME:C2	2.65	0.85
1:A:438[B]:GLU:CD	1:A:440[B]:ARG:HH22	1.82	0.83
1:A:698:GLU:O	1:A:699[A]:GLU:HG3	1.78	0.82
1:A:273:HIS:HE1	1:A:328:ASN:HD22	1.28	0.81
2:A:756:BME:H21	6:A:766:SIN:H22	1.62	0.79
1:A:357:ASN:HB2	7:A:1302:HOH:O	1.86	0.75
1:A:676:ASN:HD21	3:A:784:GOL:H32	1.51	0.74
1:A:467:HIS:CD2	1:A:469:GLN:H	2.03	0.74
1:A:434:LEU:CD1	1:A:477[A]:ILE:HD12	2.18	0.73
1:A:358:LYS:HB2	1:A:359:GLY:CA	2.20	0.71
1:A:117:PRO:HG2	3:A:773:GOL:H2	1.71	0.71
1:A:26:HIS:CE1	1:A:30:ARG:HH21	2.02	0.70
1:A:454:ARG:HH22	1:A:589:GLN:HE22	1.38	0.70
1:A:273:HIS:CE1	1:A:328:ASN:HD22	2.10	0.70
1:A:439:ASP:OD2	3:A:788:GOL:H11	1.92	0.70
1:A:615:HIS:HD2	1:A:617:ASN:H	1.39	0.68
1:A:273:HIS:HD2	1:A:379:TYR:OH	1.76	0.68
1:A:460[B]:CYS:SG	7:A:1144:HOH:O	2.50	0.68
1:A:306:HIS:CD2	1:A:309:TRP:H	2.11	0.67
1:A:306:HIS:HD2	1:A:309:TRP:H	1.41	0.67
1:A:147:ASP:O	1:A:148:ALA:HB3	1.95	0.67
1:A:460[B]:CYS:CB	2:A:756:BME:S2	2.82	0.67
1:A:80:GLN:C	1:A:95[A]:MET:HE3	2.14	0.66
1:A:7:GLU:HA	1:A:8:VAL:CB	2.25	0.66
1:A:236:HIS:HE1	1:A:309:TRP:O	1.79	0.66
1:A:423:ALA:HB2	1:A:460[A]:CYS:SG	2.36	0.65
2:A:756:BME:C2	6:A:766:SIN:H22	2.24	0.65
1:A:151:PHE:CD1	1:A:153:ALA:O	2.49	0.64
1:A:182:ARG:HD2	1:A:575:ASN:HD22	1.62	0.63
1:A:384:ASN:O	1:A:388:HIS:HD2	1.80	0.63
1:A:182:ARG:HH22	3:A:769:GOL:H32	1.63	0.63

Continued on next page...

Continued from previous page...

Atom-1	Atom-2	Interatomic distance (Å)	Clash overlap (Å)
1:A:69:TYR:CE2	1:A:95[A]:MET:HE2	2.35	0.62
1:A:484[B]:LYS:HG2	7:A:1435:HOH:O	1.99	0.62
1:A:388:HIS:HE1	1:A:419:ASP:OD2	1.83	0.62
1:A:460[B]:CYS:HB3	2:A:756:BME:S2	2.39	0.62
1:A:206[B]:ASN:HD21	1:A:210:ARG:HH21	1.48	0.61
1:A:182:ARG:NH2	3:A:769:GOL:H32	2.15	0.61
1:A:222[B]:MET:CE	1:A:233:PHE:CE2	2.83	0.61
1:A:685:ARG:HH22	3:A:788:GOL:H12	1.66	0.61
1:A:651:GLY:H	3:A:782:GOL:H12	1.66	0.61
1:A:335:GLU:OE2	7:A:838:HOH:O	2.16	0.60
1:A:676:ASN:HD21	3:A:784:GOL:C3	2.13	0.60
1:A:149:SER:O	1:A:150:LYS:O	2.19	0.60
3:A:768:GOL:H11	7:A:1220:HOH:O	2.01	0.60
1:A:501[B]:ASN:ND2	7:A:1351:HOH:O	2.24	0.60
1:A:171:LYS:HE3	7:A:1344:HOH:O	2.02	0.58
1:A:222[B]:MET:HE1	1:A:233:PHE:CE2	2.39	0.58
1:A:99:LYS:N	3:A:790:GOL:O3	2.37	0.57
1:A:273:HIS:HE1	1:A:328:ASN:ND2	1.98	0.57
1:A:565:LYS:O	3:A:787:GOL:H32	2.04	0.57
1:A:408[B]:CYS:SG	1:A:458:GLU:OE1	2.61	0.57
3:A:762:GOL:H11	7:A:1243:HOH:O	2.04	0.57
1:A:615:HIS:CD2	1:A:618:LYS:H	2.23	0.57
1:A:358:LYS:CB	1:A:359:GLY:HA3	2.35	0.56
3:A:762:GOL:C1	7:A:1243:HOH:O	2.53	0.56
1:A:228:SER:O	3:A:771:GOL:O2	2.23	0.56
1:A:81:LEU:N	1:A:95[A]:MET:HE3	2.20	0.56
1:A:569:ALA:HA	3:A:787:GOL:H2	1.87	0.55
1:A:403:GLY:HA2	6:A:766:SIN:H21	1.89	0.54
1:A:150:LYS:O	1:A:151:PHE:HD1	1.88	0.54
1:A:69:TYR:HE2	1:A:95[A]:MET:HE2	1.73	0.53
1:A:222[B]:MET:HE3	1:A:233:PHE:CE2	2.44	0.53
1:A:636:ALA:HA	3:A:775:GOL:H31	1.91	0.53
1:A:151:PHE:O	1:A:153:ALA:N	2.43	0.52
1:A:443:SER:HB3	1:A:446[A]:GLU:HG3	1.91	0.52
1:A:147:ASP:O	1:A:148:ALA:CB	2.57	0.52
1:A:93:HIS:HD2	7:A:927:HOH:O	1.92	0.52
1:A:618:LYS:HD2	7:A:1010:HOH:O	2.10	0.51
1:A:438[B]:GLU:CD	1:A:440[B]:ARG:NH2	2.53	0.51
1:A:569:ALA:CA	3:A:787:GOL:H2	2.41	0.51
1:A:615:HIS:CD2	1:A:617:ASN:H	2.25	0.51
3:A:787:GOL:O3	7:A:1295:HOH:O	2.18	0.51

Continued on next page...

Continued from previous page...

Atom-1	Atom-2	Interatomic distance (Å)	Clash overlap (Å)
1:A:685:ARG:NH2	3:A:788:GOL:H12	2.26	0.50
1:A:358:LYS:HB2	1:A:359:GLY:HA3	1.90	0.50
1:A:153:ALA:CB	1:A:154:PRO:CA	2.60	0.50
1:A:153:ALA:HB1	1:A:154:PRO:C	2.31	0.50
3:A:765:GOL:H2	3:A:770:GOL:H31	1.93	0.50
1:A:615:HIS:HD2	1:A:618:LYS:H	1.58	0.49
1:A:222[B]:MET:HE1	1:A:233:PHE:HE2	1.77	0.49
1:A:651:GLY:H	3:A:782:GOL:C1	2.25	0.49
1:A:654:VAL:HG21	3:A:782:GOL:H2	1.94	0.48
1:A:358:LYS:HB2	1:A:359:GLY:C	2.33	0.48
1:A:408[B]:CYS:SG	1:A:458:GLU:CG	3.01	0.48
1:A:615:HIS:HE1	7:A:1438:HOH:O	1.96	0.48
1:A:467:HIS:HE1	3:A:757:GOL:O1	1.96	0.48
1:A:273:HIS:CD2	1:A:379:TYR:OH	2.63	0.47
1:A:484[B]:LYS:CG	7:A:1435:HOH:O	2.60	0.47
1:A:670:ASN:HB3	1:A:674:ARG:O	2.14	0.47
1:A:384:ASN:O	1:A:388:HIS:CD2	2.67	0.46
1:A:443:SER:CB	1:A:446[A]:GLU:HG3	2.46	0.46
1:A:86:ASN:HD22	1:A:93:HIS:CD2	2.33	0.46
3:A:778:GOL:O1	3:A:778:GOL:O3	2.33	0.46
1:A:169:VAL:HG12	1:A:171:LYS:HE2	1.97	0.46
1:A:504[A]:ILE:HD12	1:A:567:MET:CE	2.46	0.46
1:A:246:ARG:HD2	3:A:781:GOL:O1	2.16	0.46
1:A:421:ARG:HD2	6:A:766:SIN:H21	1.98	0.45
1:A:667:PRO:HA	1:A:670:ASN:ND2	2.31	0.45
1:A:463:TYR:OH	7:A:1166:HOH:O	2.20	0.45
1:A:151:PHE:HD1	1:A:153:ALA:O	1.95	0.45
1:A:26:HIS:HE1	1:A:30:ARG:NH2	1.95	0.45
1:A:588[B]:LYS:HE3	7:A:1093:HOH:O	2.16	0.45
1:A:151:PHE:C	1:A:153:ALA:N	2.70	0.45
1:A:440[B]:ARG:NH1	7:A:1075:HOH:O	2.48	0.44
1:A:459:LYS:NZ	7:A:1428:HOH:O	2.28	0.44
1:A:100:PHE:HB3	3:A:780:GOL:H11	1.99	0.44
1:A:438[B]:GLU:CD	1:A:440[B]:ARG:NH1	2.48	0.44
1:A:438[B]:GLU:OE2	1:A:440[B]:ARG:CZ	2.55	0.44
1:A:197:VAL:HG11	1:A:246:ARG:HB3	2.00	0.44
1:A:177:LYS:HD2	3:A:786:GOL:H31	2.00	0.44
1:A:249:THR:HB	1:A:250:PRO:CD	2.48	0.43
1:A:150:LYS:HA	1:A:152:GLY:H	1.84	0.43
1:A:401:VAL:HG12	1:A:424:MET:SD	2.58	0.43
1:A:196[B]:GLU:H	1:A:196[B]:GLU:HG2	1.68	0.43

Continued on next page...

Continued from previous page...

Atom-1	Atom-2	Interatomic distance (Å)	Clash overlap (Å)
1:A:535:TRP:CZ2	1:A:549:LYS:HE2	2.55	0.42
1:A:358:LYS:HB2	1:A:359:GLY:O	2.19	0.41
1:A:388:HIS:CE1	1:A:419:ASP:OD2	2.70	0.41
1:A:504[A]:ILE:HD12	1:A:567:MET:SD	2.59	0.41
1:A:96:GLU:O	1:A:103:TRP:HA	2.20	0.41
1:A:459:LYS:HZ3	3:A:786:GOL:C1	2.33	0.41
1:A:201[B]:ARG:HG2	1:A:255:TYR:CD2	2.56	0.41
1:A:467:HIS:HD2	1:A:469:GLN:N	2.01	0.41
1:A:141:ILE:HD12	1:A:141:ILE:HA	1.98	0.41
1:A:656:HIS:HD2	1:A:679:LYS:O	2.02	0.41
1:A:698:GLU:O	1:A:699[A]:GLU:CG	2.60	0.41
1:A:80:GLN:C	1:A:95[A]:MET:CE	2.86	0.41
1:A:229:TYR:CD1	3:A:792:GOL:H31	2.55	0.41
1:A:137[A]:ILE:HD12	1:A:157:GLY:N	2.36	0.41
1:A:217:ASN:HB3	3:A:769:GOL:H12	2.02	0.40
1:A:438[B]:GLU:CD	1:A:440[B]:ARG:CZ	2.90	0.40

There are no symmetry-related clashes.

5.3 Torsion angles [i](#)

5.3.1 Protein backbone [i](#)

In the following table, the Percentiles column shows the percent Ramachandran outliers of the chain as a percentile score with respect to all X-ray entries followed by that with respect to entries of similar resolution.

The Analysed column shows the number of residues for which the backbone conformation was analysed, and the total number of residues.

Mol	Chain	Analysed	Favoured	Allowed	Outliers	Percentiles
1	A	729/755 (97%)	709 (97%)	14 (2%)	6 (1%)	24 7

All (6) Ramachandran outliers are listed below:

Mol	Chain	Res	Type
1	A	8	VAL
1	A	150	LYS
1	A	152	GLY
1	A	153	ALA
1	A	406	VAL

Continued on next page...

Continued from previous page...

Mol	Chain	Res	Type
1	A	471	ILE

5.3.2 Protein sidechains ⓘ

In the following table, the Percentiles column shows the percent sidechain outliers of the chain as a percentile score with respect to all X-ray entries followed by that with respect to entries of similar resolution.

The Analysed column shows the number of residues for which the sidechain conformation was analysed, and the total number of residues.

Mol	Chain	Analysed	Rotameric	Outliers	Percentiles
1	A	637/650 (98%)	619 (97%)	18 (3%)	51 29

All (18) residues with a non-rotameric sidechain are listed below:

Mol	Chain	Res	Type
1	A	8	VAL
1	A	9	ASP
1	A	16	LEU
1	A	24	LYS
1	A	109	HIS
1	A	113	LYS
1	A	151	PHE
1	A	165	CYS
1	A	214	ASN
1	A	358	LYS
1	A	421	ARG
1	A	440[A]	ARG
1	A	440[B]	ARG
1	A	541	GLU
1	A	550[A]	CYS
1	A	550[B]	CYS
1	A	699[A]	GLU
1	A	699[B]	GLU

Some sidechains can be flipped to improve hydrogen bonding and reduce clashes. All (21) such sidechains are listed below:

Mol	Chain	Res	Type
1	A	26	HIS
1	A	93	HIS

Continued on next page...

Continued from previous page...

Mol	Chain	Res	Type
1	A	214	ASN
1	A	236	HIS
1	A	239	ASN
1	A	273	HIS
1	A	275	HIS
1	A	306	HIS
1	A	328	ASN
1	A	384	ASN
1	A	388	HIS
1	A	467	HIS
1	A	469	GLN
1	A	524	ASN
1	A	544	ASN
1	A	553	GLN
1	A	575	ASN
1	A	589	GLN
1	A	615	HIS
1	A	670	ASN
1	A	676	ASN

5.3.3 RNA [i](#)

There are no RNA molecules in this entry.

5.4 Non-standard residues in protein, DNA, RNA chains [i](#)

There are no non-standard protein/DNA/RNA residues in this entry.

5.5 Carbohydrates [i](#)

There are no carbohydrates in this entry.

5.6 Ligand geometry [i](#)

38 ligands are modelled in this entry.

In the following table, the Counts columns list the number of bonds (or angles) for which Mogul statistics could be retrieved, the number of bonds (or angles) that are observed in the model and the number of bonds (or angles) that are defined in the chemical component dictionary. The Link column lists molecule types, if any, to which the group is linked. The Z score for a bond length (or angle) is the number of standard deviations the observed value is removed from the expected

value. A bond length (or angle) with $|Z| > 2$ is considered an outlier worth inspection. RMSZ is the root-mean-square of all Z scores of the bond lengths (or angles).

Mol	Type	Chain	Res	Link	Bond lengths			Bond angles		
					Counts	RMSZ	$\# Z > 2$	Counts	RMSZ	$\# Z > 2$
2	BME	A	756	-	3,3,3	0.95	0	2,2,2	1.57	0
3	GOL	A	757	-	5,5,5	1.11	0	5,5,5	3.79	4 (80%)
4	EPE	A	758	-	14,15,15	0.76	0	18,20,20	2.38	5 (27%)
3	GOL	A	759	-	5,5,5	0.24	0	5,5,5	0.92	0
3	GOL	A	760	-	5,5,5	0.37	0	5,5,5	1.16	1 (20%)
5	ACT	A	761	-	1,3,3	1.86	0	0,3,3	0.00	-
3	GOL	A	762	-	5,5,5	0.62	0	5,5,5	1.41	1 (20%)
2	BME	A	763	-	3,3,3	0.36	0	2,2,2	1.01	0
3	GOL	A	764	-	5,5,5	0.48	0	5,5,5	1.41	1 (20%)
3	GOL	A	765	-	5,5,5	0.60	0	5,5,5	0.89	0
6	SIN	A	766	-	1,7,7	0.01	0	2,8,8	0.99	0
3	GOL	A	767	-	5,5,5	0.78	0	5,5,5	0.79	0
3	GOL	A	768	-	5,5,5	0.52	0	5,5,5	0.72	0
3	GOL	A	769	-	5,5,5	0.44	0	5,5,5	0.53	0
3	GOL	A	770	-	5,5,5	0.62	0	5,5,5	1.34	1 (20%)
3	GOL	A	771	-	5,5,5	0.79	0	5,5,5	0.82	0
3	GOL	A	772	-	5,5,5	0.40	0	5,5,5	0.40	0
3	GOL	A	773	-	5,5,5	0.82	0	5,5,5	0.84	0
3	GOL	A	774	-	5,5,5	0.53	0	5,5,5	0.30	0
3	GOL	A	775	-	5,5,5	0.23	0	5,5,5	0.50	0
3	GOL	A	776	-	5,5,5	0.55	0	5,5,5	0.92	0
3	GOL	A	777	-	5,5,5	0.55	0	5,5,5	0.52	0
3	GOL	A	778	-	5,5,5	0.33	0	5,5,5	0.80	0
3	GOL	A	779	-	5,5,5	0.38	0	5,5,5	0.77	0
3	GOL	A	780	-	5,5,5	1.33	1 (20%)	5,5,5	2.06	1 (20%)
3	GOL	A	781	-	5,5,5	1.40	1 (20%)	5,5,5	1.17	1 (20%)
3	GOL	A	782	-	5,5,5	0.60	0	5,5,5	0.98	0
3	GOL	A	783	-	5,5,5	0.39	0	5,5,5	0.32	0
3	GOL	A	784	-	5,5,5	0.36	0	5,5,5	0.59	0
3	GOL	A	785	-	5,5,5	0.46	0	5,5,5	0.46	0
3	GOL	A	786	-	5,5,5	0.45	0	5,5,5	1.70	2 (40%)
3	GOL	A	787	-	5,5,5	0.63	0	5,5,5	0.75	0
3	GOL	A	788	-	5,5,5	0.35	0	5,5,5	0.37	0
6	SIN	A	789	-	1,7,7	0.08	0	2,8,8	2.30	1 (50%)
3	GOL	A	790	-	5,5,5	0.54	0	5,5,5	1.38	0
3	GOL	A	791	-	5,5,5	0.38	0	5,5,5	0.74	0
3	GOL	A	792	-	5,5,5	0.33	0	5,5,5	0.42	0
3	GOL	A	793	-	5,5,5	0.19	0	5,5,5	0.44	0

In the following table, the Chirals column lists the number of chiral outliers, the number of chiral centers analysed, the number of these observed in the model and the number defined in the chemical component dictionary. Similar counts are reported in the Torsion and Rings columns. '-' means no outliers of that kind were identified.

Mol	Type	Chain	Res	Link	Chirals	Torsions	Rings
2	BME	A	756	-	-	0/1/1/1	0/0/0/0
3	GOL	A	757	-	-	0/4/4/4	0/0/0/0
4	EPE	A	758	-	-	0/9/19/19	0/1/1/1
3	GOL	A	759	-	-	0/4/4/4	0/0/0/0
3	GOL	A	760	-	-	0/4/4/4	0/0/0/0
5	ACT	A	761	-	-	0/0/0/0	0/0/0/0
3	GOL	A	762	-	-	0/4/4/4	0/0/0/0
2	BME	A	763	-	-	0/1/1/1	0/0/0/0
3	GOL	A	764	-	-	0/4/4/4	0/0/0/0
3	GOL	A	765	-	-	0/4/4/4	0/0/0/0
6	SIN	A	766	-	-	0/1/5/5	0/0/0/0
3	GOL	A	767	-	-	0/4/4/4	0/0/0/0
3	GOL	A	768	-	-	0/4/4/4	0/0/0/0
3	GOL	A	769	-	-	0/4/4/4	0/0/0/0
3	GOL	A	770	-	-	0/4/4/4	0/0/0/0
3	GOL	A	771	-	-	0/4/4/4	0/0/0/0
3	GOL	A	772	-	-	0/4/4/4	0/0/0/0
3	GOL	A	773	-	-	0/4/4/4	0/0/0/0
3	GOL	A	774	-	-	0/4/4/4	0/0/0/0
3	GOL	A	775	-	-	0/4/4/4	0/0/0/0
3	GOL	A	776	-	-	0/4/4/4	0/0/0/0
3	GOL	A	777	-	-	0/4/4/4	0/0/0/0
3	GOL	A	778	-	-	0/4/4/4	0/0/0/0
3	GOL	A	779	-	-	0/4/4/4	0/0/0/0
3	GOL	A	780	-	-	0/4/4/4	0/0/0/0
3	GOL	A	781	-	-	0/4/4/4	0/0/0/0
3	GOL	A	782	-	-	0/4/4/4	0/0/0/0
3	GOL	A	783	-	-	0/4/4/4	0/0/0/0
3	GOL	A	784	-	-	0/4/4/4	0/0/0/0
3	GOL	A	785	-	-	0/4/4/4	0/0/0/0
3	GOL	A	786	-	-	0/4/4/4	0/0/0/0
3	GOL	A	787	-	-	0/4/4/4	0/0/0/0
3	GOL	A	788	-	-	0/4/4/4	0/0/0/0
6	SIN	A	789	-	-	0/1/5/5	0/0/0/0
3	GOL	A	790	-	-	0/4/4/4	0/0/0/0
3	GOL	A	791	-	-	0/4/4/4	0/0/0/0
3	GOL	A	792	-	-	0/4/4/4	0/0/0/0
3	GOL	A	793	-	-	0/4/4/4	0/0/0/0

All (2) bond length outliers are listed below:

Mol	Chain	Res	Type	Atoms	Z	Observed(Å)	Ideal(Å)
3	A	781	GOL	O2-C2	-2.71	1.35	1.43
3	A	780	GOL	O2-C2	-2.63	1.35	1.43

All (18) bond angle outliers are listed below:

Mol	Chain	Res	Type	Atoms	Z	Observed(°)	Ideal(°)
3	A	757	GOL	C3-C2-C1	-6.83	84.34	111.12
4	A	758	EPE	C9-N1-C2	-4.74	99.12	111.27
3	A	757	GOL	O1-C1-C2	-2.88	96.20	110.18
3	A	757	GOL	O2-C2-C1	-2.61	96.69	108.65
4	A	758	EPE	C2-C3-N4	-2.61	105.96	110.63
3	A	762	GOL	O1-C1-C2	-2.30	99.03	110.18
3	A	781	GOL	O2-C2-C3	-2.24	98.36	108.65
3	A	760	GOL	C3-C2-C1	-2.02	103.19	111.12
3	A	786	GOL	O3-C3-C2	2.03	120.04	110.18
3	A	786	GOL	C3-C2-C1	2.12	119.44	111.12
3	A	764	GOL	O1-C1-C2	2.29	121.30	110.18
6	A	789	SIN	C3-C2-C1	2.57	117.46	112.75
3	A	770	GOL	O2-C2-C3	2.59	120.51	108.65
4	A	758	EPE	C7-N4-C5	2.77	118.37	111.27
3	A	757	GOL	O2-C2-C3	3.14	123.04	108.65
3	A	780	GOL	C3-C2-C1	3.46	124.68	111.12
4	A	758	EPE	C5-N4-C3	4.04	117.66	108.90
4	A	758	EPE	O1S-S-C10	6.23	112.22	106.91

There are no chirality outliers.

There are no torsion outliers.

There are no ring outliers.

21 monomers are involved in 39 short contacts:

Mol	Chain	Res	Type	Clashes	Symm-Clashes
2	A	756	BME	7	0
3	A	757	GOL	1	0
3	A	762	GOL	2	0
3	A	765	GOL	1	0
6	A	766	SIN	4	0
3	A	768	GOL	1	0
3	A	769	GOL	3	0
3	A	770	GOL	1	0
3	A	771	GOL	1	0

Continued on next page...

Continued from previous page...

Mol	Chain	Res	Type	Clashes	Symm-Clashes
3	A	773	GOL	1	0
3	A	775	GOL	1	0
3	A	778	GOL	1	0
3	A	780	GOL	1	0
3	A	781	GOL	1	0
3	A	782	GOL	3	0
3	A	784	GOL	2	0
3	A	786	GOL	2	0
3	A	787	GOL	4	0
3	A	788	GOL	3	0
3	A	790	GOL	1	0
3	A	792	GOL	1	0

5.7 Other polymers [i](#)

There are no such residues in this entry.

5.8 Polymer linkage issues [i](#)

There are no chain breaks in this entry.

6 Fit of model and data ⓘ

6.1 Protein, DNA and RNA chains ⓘ

In the following table, the column labelled ‘#RSRZ> 2’ contains the number (and percentage) of RSRZ outliers, followed by percent RSRZ outliers for the chain as percentile scores relative to all X-ray entries and entries of similar resolution. The OWAB column contains the minimum, median, 95th percentile and maximum values of the occupancy-weighted average B-factor per residue. The column labelled ‘Q< 0.9’ lists the number of (and percentage) of residues with an average occupancy less than 0.9.

Mol	Chain	Analysed	<RSRZ>	#RSRZ>2		OWAB(Å ²)	Q<0.9
1	A	693/755 (91%)	-0.15	24 (3%)	48 52	12, 19, 39, 73	0

All (24) RSRZ outliers are listed below:

Mol	Chain	Res	Type	RSRZ
1	A	8	VAL	13.9
1	A	151	PHE	10.8
1	A	152	GLY	8.6
1	A	7	GLU	4.9
1	A	148	ALA	4.5
1	A	149	SER	4.4
1	A	699[A]	GLU	3.9
1	A	359	GLY	3.7
1	A	153	ALA	3.6
1	A	150	LYS	3.6
1	A	147	ASP	3.5
1	A	9	ASP	3.2
1	A	154	PRO	3.0
1	A	544	ASN	3.0
1	A	696	ASP	2.9
1	A	64	ASP	2.7
1	A	165	CYS	2.6
1	A	370	LEU	2.6
1	A	10	HIS	2.3
1	A	111	ASN	2.3
1	A	63	VAL	2.2
1	A	625	VAL	2.1
1	A	541	GLU	2.1
1	A	697[A]	ARG	2.0

6.2 Non-standard residues in protein, DNA, RNA chains [i](#)

There are no non-standard protein/DNA/RNA residues in this entry.

6.3 Carbohydrates [i](#)

There are no carbohydrates in this entry.

6.4 Ligands [i](#)

In the following table, the Atoms column lists the number of modelled atoms in the group and the number defined in the chemical component dictionary. LLDF column lists the quality of electron density of the group with respect to its neighbouring residues in protein, DNA or RNA chains. The B-factors column lists the minimum, median, 95th percentile and maximum values of B factors of atoms in the group. The column labelled 'Q< 0.9' lists the number of atoms with occupancy less than 0.9.

Mol	Type	Chain	Res	Atoms	RSCC	RSR	LLDF	B-factors(Å ²)	Q<0.9
3	GOL	A	782	6/6	0.87	0.27	14.95	30,50,54,55	0
3	GOL	A	780	6/6	0.86	0.23	14.64	32,35,42,46	0
3	GOL	A	790	6/6	0.74	0.34	11.81	41,44,46,47	0
3	GOL	A	778	6/6	0.79	0.25	7.94	62,65,69,69	0
6	SIN	A	766	8/8	0.80	0.24	7.84	42,51,57,59	0
3	GOL	A	776	6/6	0.88	0.20	7.81	47,52,52,53	0
3	GOL	A	785	6/6	0.83	0.22	7.29	44,54,59,60	0
3	GOL	A	787	6/6	0.75	0.30	7.26	28,42,46,48	0
3	GOL	A	781	6/6	0.94	0.18	6.29	19,37,38,44	0
3	GOL	A	769	6/6	0.87	0.16	5.99	35,45,46,47	0
3	GOL	A	786	6/6	0.88	0.21	5.34	20,39,43,46	0
3	GOL	A	792	6/6	0.73	0.21	5.11	55,59,60,60	0
3	GOL	A	791	6/6	0.60	0.24	4.69	51,55,55,56	0
3	GOL	A	784	6/6	0.63	0.29	4.53	46,56,58,59	0
3	GOL	A	770	6/6	0.90	0.20	3.87	38,51,52,58	0
3	GOL	A	762	6/6	0.92	0.17	3.71	30,38,40,49	0
3	GOL	A	767	6/6	0.65	0.17	3.53	37,44,49,51	0
3	GOL	A	764	6/6	0.91	0.12	3.35	31,46,50,52	0
3	GOL	A	768	6/6	0.87	0.20	3.25	31,39,48,55	0
6	SIN	A	789	8/8	0.63	0.23	3.04	55,58,60,60	0
3	GOL	A	788	6/6	0.88	0.24	3.02	44,51,53,59	0
3	GOL	A	777	6/6	0.90	0.17	2.82	33,46,49,49	0
4	EPE	A	758	15/15	0.91	0.10	2.59	20,23,44,49	0
3	GOL	A	757	6/6	0.93	0.11	2.17	19,21,32,33	0

Continued on next page...

Continued from previous page...

Mol	Type	Chain	Res	Atoms	RSCC	RSR	LLDF	B-factors(\AA^2)	Q<0.9
3	GOL	A	765	6/6	0.90	0.12	1.81	35,42,45,49	0
3	GOL	A	775	6/6	0.81	0.15	1.55	42,50,55,58	0
3	GOL	A	793	6/6	0.72	0.19	1.37	66,70,72,72	0
3	GOL	A	771	6/6	0.92	0.28	0.74	41,46,48,49	0
3	GOL	A	779	6/6	0.79	0.17	0.16	54,55,60,62	0
3	GOL	A	760	6/6	0.89	0.10	-0.10	30,36,39,41	0
3	GOL	A	759	6/6	0.96	0.07	-0.39	22,29,32,33	0
2	BME	A	756	4/4	0.95	0.10	-0.55	30,31,32,37	0
3	GOL	A	772	6/6	0.62	0.40	-	68,71,71,73	0
3	GOL	A	773	6/6	0.66	0.17	-	54,57,58,58	0
5	ACT	A	761	4/4	0.87	0.13	-	63,63,64,64	0
2	BME	A	763	4/4	0.98	0.19	-	29,35,37,45	0
3	GOL	A	774	6/6	0.78	0.15	-	63,64,66,66	0
3	GOL	A	783	6/6	0.82	0.18	-	64,67,67,67	0

6.5 Other polymers [i](#)

There are no such residues in this entry.