



wwPDB X-ray Structure Validation Summary Report ⓘ

Feb 1, 2016 – 02:49 PM GMT

PDB ID : 4AMV
Title : E.COLI GLUCOSAMINE-6P SYNTHASE IN COMPLEX WITH FRUCTOSE-6P
Authors : Mouilleron, S.; Golinelli-Pimpaneau, B.
Deposited on : 2012-03-14
Resolution : 2.05 Å(reported)

This is a wwPDB X-ray Structure Validation Summary Report for a publicly released PDB entry.
We welcome your comments at validation@mail.wwpdb.org
A user guide is available at
<http://wwpdb.org/validation/2016/XrayValidationReportHelp>
with specific help available everywhere you see the ⓘ symbol.

The following versions of software and data (see [references ⓘ](#)) were used in the production of this report:

MolProbity : 4.02b-467
Mogul : 1.7 (RC4), CSD as536be (2015)
Xtriage (Phenix) : 1.9-1692
EDS : rb-20026688
Percentile statistics : 20151230.v01 (using entries in the PDB archive December 30th 2015)
Refmac : 5.8.0135
CCP4 : 6.5.0
Ideal geometry (proteins) : Engh & Huber (2001)
Ideal geometry (DNA, RNA) : Parkinson et al. (1996)
Validation Pipeline (wwPDB-VP) : trunk26865

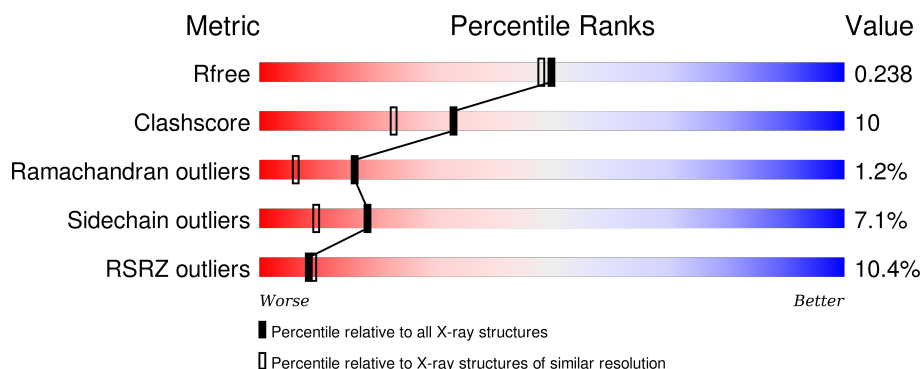
1 Overall quality at a glance

The following experimental techniques were used to determine the structure:

X-RAY DIFFRACTION

The reported resolution of this entry is 2.05 Å.

Percentile scores (ranging between 0-100) for global validation metrics of the entry are shown in the following graphic. The table shows the number of entries on which the scores are based.



Metric	Whole archive (#Entries)	Similar resolution (#Entries, resolution range(Å))
R_{free}	91344	1192 (2.04-2.04)
Clashscore	102246	1269 (2.04-2.04)
Ramachandran outliers	100387	1258 (2.04-2.04)
Sidechain outliers	100360	1258 (2.04-2.04)
RSRZ outliers	91569	1194 (2.04-2.04)

The table below summarises the geometric issues observed across the polymeric chains and their fit to the electron density. The red, orange, yellow and green segments on the lower bar indicate the fraction of residues that contain outliers for ≥ 3 , 2, 1 and 0 types of geometric quality criteria. A grey segment represents the fraction of residues that are not modelled. The numeric value for each fraction is indicated below the corresponding segment, with a dot representing fractions $\leq 5\%$. The upper red bar (where present) indicates the fraction of residues that have poor fit to the electron density. The numeric value is given above the bar.

Mol	Chain	Length	Quality of chain
1	A	609	<div> <div>3%</div> <div>80%</div> <div>16%</div> <div>.</div> </div>
1	B	609	<div> <div>20%</div> <div>79%</div> <div>18%</div> <div>.</div> </div>
1	C	609	<div> <div>8%</div> <div>76%</div> <div>21%</div> <div>.</div> </div>

The following table lists non-polymeric compounds, carbohydrate monomers and non-standard residues in protein, DNA, RNA chains that are outliers for geometric or electron-density-fit criteria:

Mol	Type	Chain	Res	Chirality	Geometry	Clashes	Electron density
2	F6R	B	1609	X	-	-	-
2	F6R	C	1609	X	-	-	-

2 Entry composition [i](#)

There are 3 unique types of molecules in this entry. The entry contains 14225 atoms, of which 0 are hydrogens and 0 are deuteriums.

In the tables below, the ZeroOcc column contains the number of atoms modelled with zero occupancy, the AltConf column contains the number of residues with at least one atom in alternate conformation and the Trace column contains the number of residues modelled with at most 2 atoms.

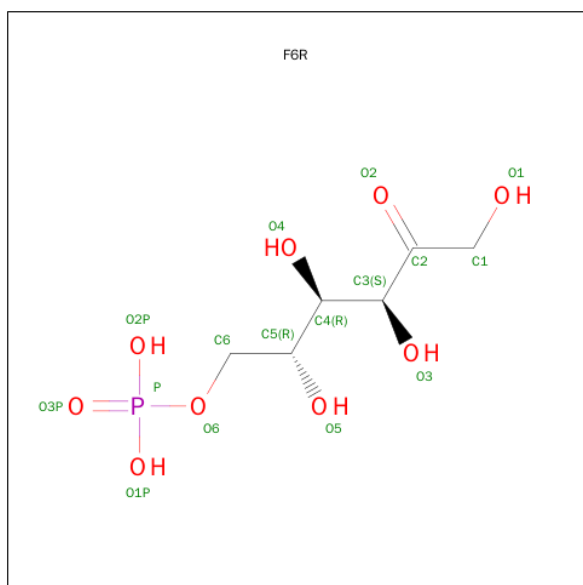
- Molecule 1 is a protein called GLUCOSAMINE--FRUCTOSE-6-PHOSPHATE AMINO-TRANSFERASE [ISOMER IZING].

Mol	Chain	Residues	Atoms					ZeroOcc	AltConf	Trace
1	A	608	Total	C	N	O	S	0	0	0
			4679	2945	823	894	17			
1	B	608	Total	C	N	O	S	0	0	0
			4198	2618	740	825	15			
1	C	608	Total	C	N	O	S	0	0	0
			4606	2897	812	880	17			

There are 3 discrepancies between the modelled and reference sequences:

Chain	Residue	Modelled	Actual	Comment	Reference
A	421	LYS	ARG	CONFLICT	UNP P17169
B	421	LYS	ARG	CONFLICT	UNP P17169
C	421	LYS	ARG	CONFLICT	UNP P17169

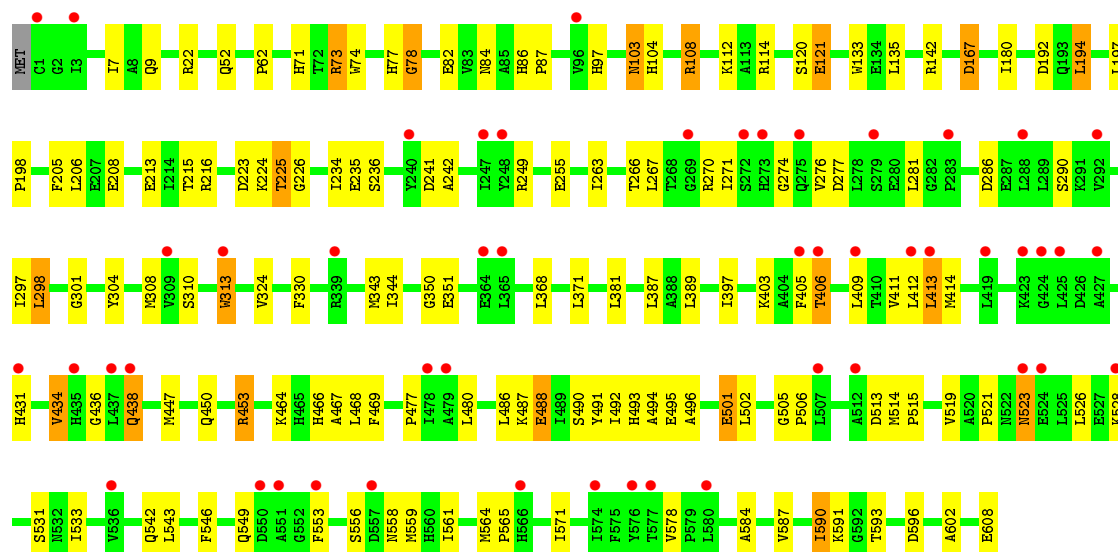
- Molecule 2 is FRUCTOSE -6-PHOSPHATE (three-letter code: F6R) (formula: C₆H₁₃O₉P).



Mol	Chain	Residues	Atoms				ZeroOcc	AltConf
2	A	1	Total	C	O	P	0	0
			16	6	9	1		
2	B	1	Total	C	O	P	0	0
			16	6	9	1		
2	C	1	Total	C	O	P	0	0
			16	6	9	1		

- Molecule 3 is water.

Mol	Chain	Residues	Atoms		ZeroOcc	AltConf
3	A	431	Total	O	0	0
			431	431		
3	B	53	Total	O	0	0
			53	53		
3	C	210	Total	O	0	0
			210	210		



4 Data and refinement statistics

Property	Value	Source
Space group	C 1 2 1	Depositor
Cell constants a, b, c, α , β , γ	132.20Å 109.68Å 176.33Å 90.00° 97.11° 90.00°	Depositor
Resolution (Å)	15.00 – 2.05 29.71 – 2.05	Depositor EDS
% Data completeness (in resolution range)	98.5 (15.00-2.05) 98.6 (29.71-2.05)	Depositor EDS
R_{merge}	0.08	Depositor
R_{sym}	(Not available)	Depositor
$\langle I/\sigma(I) \rangle$ ¹	1.78 (at 2.04Å)	Xtriage
Refinement program	REFMAC 5.6.0117	Depositor
R, R_{free}	0.206 , 0.240 0.205 , 0.238	Depositor DCC
R_{free} test set	7769 reflections (5.32%)	DCC
Wilson B-factor (Å ²)	33.5	Xtriage
Anisotropy	0.054	Xtriage
Bulk solvent k_{sol} (e/Å ³), B_{sol} (Å ²)	0.32 , 51.8	EDS
Estimated twinning fraction	No twinning to report.	Xtriage
L-test for twinning ²	$\langle L \rangle = 0.48$, $\langle L^2 \rangle = 0.31$	Xtriage
Outliers	0 of 154048 reflections	Xtriage
F_o, F_c correlation	0.96	EDS
Total number of atoms	14225	wwPDB-VP
Average B, all atoms (Å ²)	65.0	wwPDB-VP

Xtriage's analysis on translational NCS is as follows: *The largest off-origin peak in the Patterson function is 3.62% of the height of the origin peak. No significant pseudotranslation is detected.*

¹Intensities estimated from amplitudes.

²Theoretical values of $\langle |L| \rangle$, $\langle L^2 \rangle$ for acentric reflections are 0.5, 0.375 respectively for untwinned datasets, and 0.333, 0.2 for perfectly twinned datasets.

5 Model quality [i](#)

5.1 Standard geometry [i](#)

Bond lengths and bond angles in the following residue types are not validated in this section: F6R

The Z score for a bond length (or angle) is the number of standard deviations the observed value is removed from the expected value. A bond length (or angle) with $|Z| > 5$ is considered an outlier worth inspection. RMSZ is the root-mean-square of all Z scores of the bond lengths (or angles).

Mol	Chain	Bond lengths		Bond angles	
		RMSZ	$\# Z > 5$	RMSZ	$\# Z > 5$
1	A	0.96	3/4760 (0.1%)	1.02	16/6448 (0.2%)
1	B	0.72	8/4258 (0.2%)	0.75	5/5780 (0.1%)
1	C	0.79	3/4685 (0.1%)	0.86	4/6353 (0.1%)
All	All	0.83	14/13703 (0.1%)	0.89	25/18581 (0.1%)

The worst 5 of 14 bond length outliers are listed below:

Mol	Chain	Res	Type	Atoms	Z	Observed(Å)	Ideal(Å)
1	B	167	ASP	C-O	13.82	1.49	1.23
1	B	39	GLU	C-N	-12.14	1.11	1.33
1	B	167	ASP	C-N	9.81	1.56	1.34
1	B	39	GLU	N-CA	9.59	1.65	1.46
1	B	42	MET	N-CA	8.73	1.63	1.46

The worst 5 of 25 bond angle outliers are listed below:

Mol	Chain	Res	Type	Atoms	Z	Observed(°)	Ideal(°)
1	A	201	ARG	NE-CZ-NH1	-9.71	115.45	120.30
1	A	414	MET	CG-SD-CE	-8.38	86.79	100.20
1	B	167	ASP	O-C-N	7.65	134.94	122.70
1	A	1	CYS	CA-CB-SG	-6.85	101.67	114.00
1	A	543	LEU	CA-CB-CG	-6.49	100.38	115.30

There are no chirality outliers.

There are no planarity outliers.

5.2 Too-close contacts ⓘ

In the following table, the Non-H and H(model) columns list the number of non-hydrogen atoms and hydrogen atoms in the chain respectively. The H(added) column lists the number of hydrogen atoms added and optimized by MolProbity. The Clashes column lists the number of clashes within the asymmetric unit, whereas Symm-Clashes lists symmetry related clashes.

Mol	Chain	Non-H	H(model)	H(added)	Clashes	Symm-Clashes
1	A	4679	0	4689	94	1
1	B	4198	0	3876	88	0
1	C	4606	0	4563	121	1
2	A	16	0	8	0	0
2	B	16	0	11	0	0
2	C	16	0	11	0	0
3	A	431	0	0	10	0
3	B	53	0	0	6	0
3	C	210	0	0	15	0
All	All	14225	0	13158	276	1

The all-atom clashscore is defined as the number of clashes found per 1000 atoms (including hydrogen atoms). The all-atom clashscore for this structure is 10.

The worst 5 of 276 close contacts within the same asymmetric unit are listed below, sorted by their clash magnitude.

Atom-1	Atom-2	Interatomic distance (Å)	Clash overlap (Å)
1:A:240:TYR:HB3	1:C:235:GLU:CG	1.81	1.10
1:A:240:TYR:HB3	1:C:235:GLU:HG2	1.29	1.05
1:A:240:TYR:CB	1:C:235:GLU:HG2	1.86	1.05
1:B:453:ARG:HG2	1:B:453:ARG:HH11	1.18	1.02
1:C:104:HIS:CE1	1:C:108:ARG:HH21	1.76	1.02

All (1) symmetry-related close contacts are listed below. The label for Atom-2 includes the symmetry operator and encoded unit-cell translations to be applied.

Atom-1	Atom-2	Interatomic distance (Å)	Clash overlap (Å)
1:A:138:GLY:O	1:C:82:GLU:OE1[2_656]	1.92	0.28

5.3 Torsion angles [i](#)

5.3.1 Protein backbone [i](#)

In the following table, the Percentiles column shows the percent Ramachandran outliers of the chain as a percentile score with respect to all X-ray entries followed by that with respect to entries of similar resolution.

The Analysed column shows the number of residues for which the backbone conformation was analysed, and the total number of residues.

Mol	Chain	Analysed	Favoured	Allowed	Outliers	Percentiles	
1	A	606/609 (100%)	591 (98%)	11 (2%)	4 (1%)	26	15
1	B	606/609 (100%)	557 (92%)	33 (5%)	16 (3%)	7	1
1	C	606/609 (100%)	580 (96%)	25 (4%)	1 (0%)	52	43
All	All	1818/1827 (100%)	1728 (95%)	69 (4%)	21 (1%)	16	6

5 of 21 Ramachandran outliers are listed below:

Mol	Chain	Res	Type
1	B	106	PRO
1	B	235	GLU
1	B	238	LEU
1	B	240	TYR
1	B	284	ASN

5.3.2 Protein sidechains [i](#)

In the following table, the Percentiles column shows the percent sidechain outliers of the chain as a percentile score with respect to all X-ray entries followed by that with respect to entries of similar resolution.

The Analysed column shows the number of residues for which the sidechain conformation was analysed, and the total number of residues.

Mol	Chain	Analysed	Rotameric	Outliers	Percentiles	
1	A	497/501 (99%)	464 (93%)	33 (7%)	21	11
1	B	388/501 (77%)	355 (92%)	33 (8%)	13	6
1	C	479/501 (96%)	448 (94%)	31 (6%)	21	11
All	All	1364/1503 (91%)	1267 (93%)	97 (7%)	18	10

5 of 97 residues with a non-rotameric sidechain are listed below:

Mol	Chain	Res	Type
1	B	158	THR
1	B	383	ARG
1	C	502	LEU
1	B	194	LEU
1	B	328	SER

Some sidechains can be flipped to improve hydrogen bonding and reduce clashes. 5 of 24 such sidechains are listed below:

Mol	Chain	Res	Type
1	B	542	GLN
1	C	84	ASN
1	C	542	GLN
1	B	600	ASN
1	C	9	GLN

5.3.3 RNA [i](#)

There are no RNA molecules in this entry.

5.4 Non-standard residues in protein, DNA, RNA chains [i](#)

There are no non-standard protein/DNA/RNA residues in this entry.

5.5 Carbohydrates [i](#)

There are no carbohydrates in this entry.

5.6 Ligand geometry [i](#)

3 ligands are modelled in this entry.

In the following table, the Counts columns list the number of bonds (or angles) for which Mogul statistics could be retrieved, the number of bonds (or angles) that are observed in the model and the number of bonds (or angles) that are defined in the chemical component dictionary. The Link column lists molecule types, if any, to which the group is linked. The Z score for a bond length (or angle) is the number of standard deviations the observed value is removed from the expected value. A bond length (or angle) with $|Z| > 2$ is considered an outlier worth inspection. RMSZ is the root-mean-square of all Z scores of the bond lengths (or angles).

Mol	Type	Chain	Res	Link	Bond lengths			Bond angles		
					Counts	RMSZ	# Z > 2	Counts	RMSZ	# Z > 2
2	F6R	A	1609	-	15,15,15	2.29	5 (33%)	14,21,21	2.69	5 (35%)
2	F6R	B	1609	-	15,15,15	0.88	0	14,21,21	2.67	8 (57%)
2	F6R	C	1609	-	15,15,15	1.17	1 (6%)	14,21,21	2.70	5 (35%)

In the following table, the Chirals column lists the number of chiral outliers, the number of chiral centers analysed, the number of these observed in the model and the number defined in the chemical component dictionary. Similar counts are reported in the Torsion and Rings columns. '-' means no outliers of that kind were identified.

Mol	Type	Chain	Res	Link	Chirals	Torsions	Rings
2	F6R	A	1609	-	-	0/20/20/20	0/0/0/0
2	F6R	B	1609	-	2/2/5/5	0/20/20/20	0/0/0/0
2	F6R	C	1609	-	2/2/5/5	0/20/20/20	0/0/0/0

The worst 5 of 6 bond length outliers are listed below:

Mol	Chain	Res	Type	Atoms	Z	Observed(Å)	Ideal(Å)
2	A	1609	F6R	C6-C5	-4.97	1.44	1.51
2	A	1609	F6R	C5-C4	-3.99	1.45	1.53
2	A	1609	F6R	O4-C4	-3.45	1.34	1.43
2	C	1609	F6R	C6-C5	-2.79	1.47	1.51
2	A	1609	F6R	C4-C3	-2.15	1.48	1.53

The worst 5 of 18 bond angle outliers are listed below:

Mol	Chain	Res	Type	Atoms	Z	Observed(°)	Ideal(°)
2	B	1609	F6R	O3-C3-C4	-4.40	101.23	110.41
2	A	1609	F6R	O3-C3-C4	-4.38	101.29	110.41
2	C	1609	F6R	O3-C3-C4	-4.07	101.93	110.41
2	B	1609	F6R	O6-P-O3P	-2.68	100.33	107.14
2	B	1609	F6R	O3-C3-C2	-2.25	106.84	111.01

All (4) chirality outliers are listed below:

Mol	Chain	Res	Type	Atom
2	B	1609	F6R	C5
2	B	1609	F6R	C4
2	C	1609	F6R	C5
2	C	1609	F6R	C4

There are no torsion outliers.

There are no ring outliers.

No monomer is involved in short contacts.

5.7 Other polymers

There are no such residues in this entry.

5.8 Polymer linkage issues

There are no chain breaks in this entry.

6 Fit of model and data [i](#)

6.1 Protein, DNA and RNA chains [i](#)

In the following table, the column labelled ‘#RSRZ> 2’ contains the number (and percentage) of RSRZ outliers, followed by percent RSRZ outliers for the chain as percentile scores relative to all X-ray entries and entries of similar resolution. The OWAB column contains the minimum, median, 95th percentile and maximum values of the occupancy-weighted average B-factor per residue. The column labelled ‘Q< 0.9’ lists the number of (and percentage) of residues with an average occupancy less than 0.9.

Mol	Chain	Analysed	<RSRZ>	#RSRZ>2	OWAB(Å ²)	Q<0.9
1	A	608/609 (99%)	-0.05	20 (3%) 50 57	24, 37, 65, 89	0
1	B	608/609 (99%)	1.04	120 (19%) 1 1	46, 96, 163, 202	0
1	C	608/609 (99%)	0.38	50 (8%) 14 16	29, 61, 114, 141	0
All	All	1824/1827 (99%)	0.46	190 (10%) 8 9	24, 60, 139, 202	0

The worst 5 of 190 RSRZ outliers are listed below:

Mol	Chain	Res	Type	RSRZ
1	B	113	ALA	10.1
1	B	127	ILE	8.8
1	B	138	GLY	8.5
1	C	240	TYR	7.6
1	B	58	ALA	7.2

6.2 Non-standard residues in protein, DNA, RNA chains [i](#)

There are no non-standard protein/DNA/RNA residues in this entry.

6.3 Carbohydrates [i](#)

There are no carbohydrates in this entry.

6.4 Ligands [i](#)

In the following table, the Atoms column lists the number of modelled atoms in the group and the number defined in the chemical component dictionary. LLDF column lists the quality of electron density of the group with respect to its neighbouring residues in protein, DNA or RNA chains. The B-factors column lists the minimum, median, 95th percentile and maximum values of B factors

of atoms in the group. The column labelled 'Q< 0.9' lists the number of atoms with occupancy less than 0.9.

Mol	Type	Chain	Res	Atoms	RSCC	RSR	LLDF	B-factors(\AA^2)	Q<0.9
2	F6R	B	1609	16/16	0.94	0.18	0.97	67,72,80,82	0
2	F6R	C	1609	16/16	0.97	0.17	0.79	52,55,61,62	0
2	F6R	A	1609	16/16	0.98	0.14	-0.19	25,27,28,29	0

6.5 Other polymers [i](#)

There are no such residues in this entry.