



# Full wwPDB X-ray Structure Validation Report ⓘ

Jan 31, 2016 – 06:25 PM GMT

PDB ID : 1AOM  
Title : SUBSTRATE AND PRODUCT BOUND TO CYTOCHROME CD1 NITRITE REDUCTASE  
Authors : Williams, P.A.; Fulop, V.  
Deposited on : 1997-07-08  
Resolution : 1.80 Å(reported)

This is a Full wwPDB X-ray Structure Validation Report for a publicly released PDB entry.  
We welcome your comments at [validation@mail.wwpdb.org](mailto:validation@mail.wwpdb.org)  
A user guide is available at  
<http://wwpdb.org/validation/2016/XrayValidationReportHelp>  
with specific help available everywhere you see the ⓘ symbol.

---

The following versions of software and data (see [references ⓘ](#)) were used in the production of this report:

MolProbity : 4.02b-467  
Mogul : 1.7 (RC4), CSD as536be (2015)  
Xtriage (Phenix) : 1.9-1692  
EDS : rb-20026688  
Percentile statistics : 20151230.v01 (using entries in the PDB archive December 30th 2015)  
Refmac : 5.8.0135  
CCP4 : 6.5.0  
Ideal geometry (proteins) : Engh & Huber (2001)  
Ideal geometry (DNA, RNA) : Parkinson et al. (1996)  
Validation Pipeline (wwPDB-VP) : trunk26865

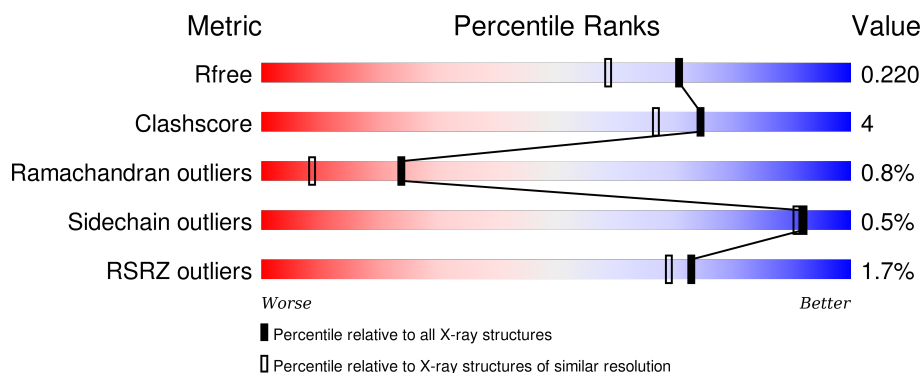
# 1 Overall quality at a glance

The following experimental techniques were used to determine the structure:

## *X-RAY DIFFRACTION*


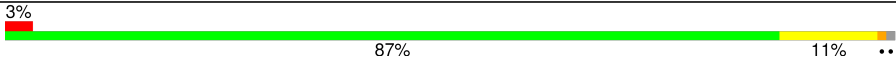
The reported resolution of this entry is 1.80 Å.

Percentile scores (ranging between 0-100) for global validation metrics of the entry are shown in the following graphic. The table shows the number of entries on which the scores are based.



Metric	Whole archive (#Entries)	Similar resolution (#Entries, resolution range(Å))
$R_{free}$	91344	4533 (1.80-1.80)
Clashscore	102246	5383 (1.80-1.80)
Ramachandran outliers	100387	5320 (1.80-1.80)
Sidechain outliers	100360	5319 (1.80-1.80)
RSRZ outliers	91569	4547 (1.80-1.80)

The table below summarises the geometric issues observed across the polymeric chains and their fit to the electron density. The red, orange, yellow and green segments on the lower bar indicate the fraction of residues that contain outliers for  $\geq 3$ , 2, 1 and 0 types of geometric quality criteria. A grey segment represents the fraction of residues that are not modelled. The numeric value for each fraction is indicated below the corresponding segment, with a dot representing fractions  $\leq 5\%$ . The upper red bar (where present) indicates the fraction of residues that have poor fit to the electron density. The numeric value is given above the bar.

Mol	Chain	Length	Quality of chain
1	A	567	 70% 7% 23%
1	B	567	 3% 87% 11% ..

## 2 Entry composition

There are 6 unique types of molecules in this entry. The entry contains 9006 atoms, of which 0 are hydrogens and 0 are deuteriums.

In the tables below, the ZeroOcc column contains the number of atoms modelled with zero occupancy, the AltConf column contains the number of residues with at least one atom in alternate conformation and the Trace column contains the number of residues modelled with at most 2 atoms.

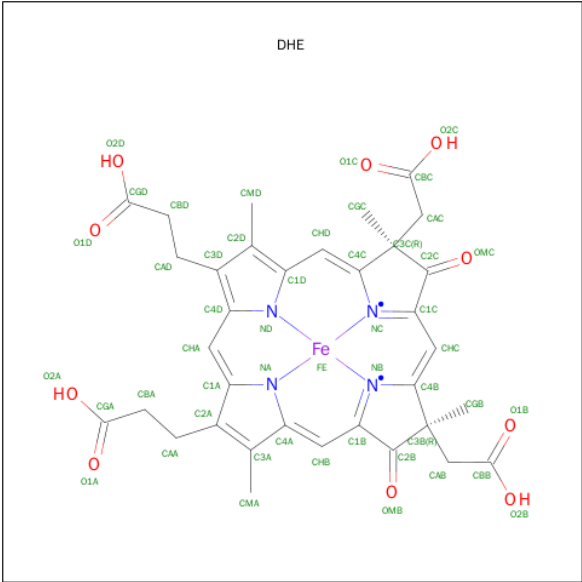
- Molecule 1 is a protein called NITRITE REDUCTASE.

Mol	Chain	Residues	Atoms					ZeroOcc	AltConf	Trace
1	A	439	Total	C	N	O	S	0	0	0
			3434	2179	571	673	11			
1	B	559	Total	C	N	O	S	0	0	0
			4348	2746	729	858	15			

There are 8 discrepancies between the modelled and reference sequences:

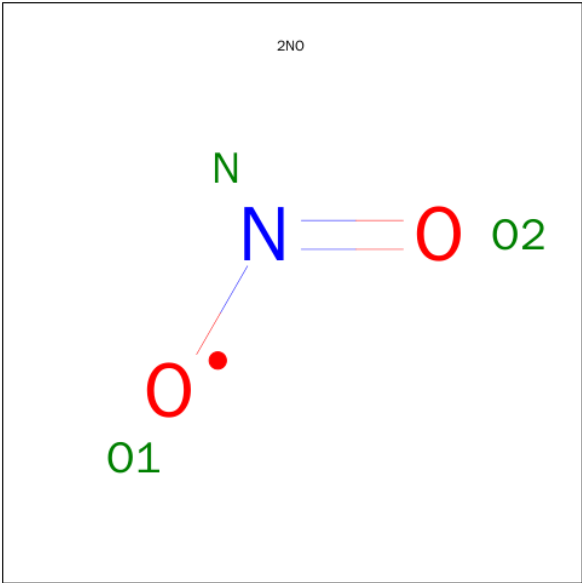
Chain	Residue	Modelled	Actual	Comment	Reference
A	160	MET	GLU	CONFLICT	UNP P72181
A	185	SER	THR	CONFLICT	UNP P72181
A	191	THR	SER	CONFLICT	UNP P72181
A	331	ASN	ASP	CONFLICT	UNP P72181
B	160	MET	GLU	CONFLICT	UNP P72181
B	185	SER	THR	CONFLICT	UNP P72181
B	191	THR	SER	CONFLICT	UNP P72181
B	331	ASN	ASP	CONFLICT	UNP P72181

- Molecule 2 is HEME D (three-letter code: DHE) (formula: C<sub>34</sub>H<sub>32</sub>FeN<sub>4</sub>O<sub>10</sub>).



Mol	Chain	Residues	Atoms					ZeroOcc	AltConf
2	A	1	Total	C	Fe	N	O	0	0
			49	34	1	4	10		
2	B	1	Total	C	Fe	N	O	0	0
			49	34	1	4	10		

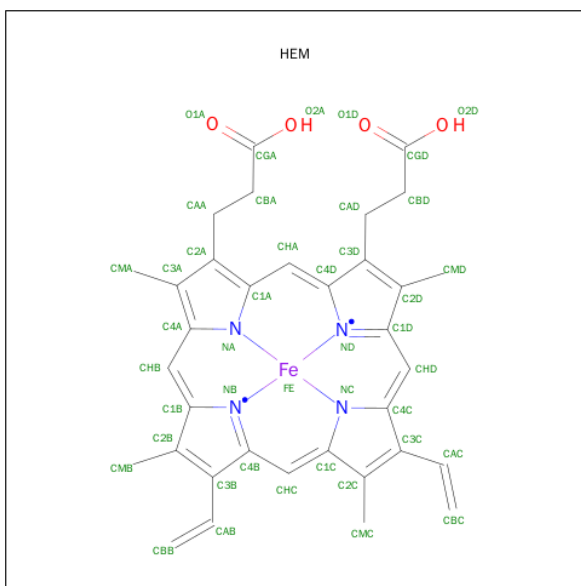
- Molecule 3 is NITROGEN DIOXIDE (three-letter code: 2NO) (formula: NO<sub>2</sub>).



Mol	Chain	Residues	Atoms			ZeroOcc	AltConf
3	A	1	Total	N	O	0	0
			3	1	2		

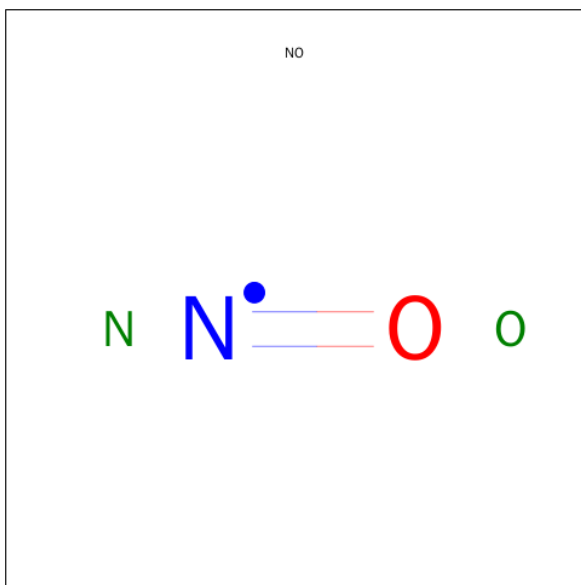
- Molecule 4 is PROTOPORPHYRIN IX CONTAINING FE (three-letter code: HEM) (for-

mula:  $C_{34}H_{32}FeN_4O_4$ ).



Mol	Chain	Residues	Atoms					ZeroOcc	AltConf
4	B	1	Total	C	Fe	N	O	0	0
			43	34	1	4	4		

- Molecule 5 is NITRIC OXIDE (three-letter code: NO) (formula: NO).



Mol	Chain	Residues	Atoms			ZeroOcc	AltConf
5	B	1	Total	N	O	0	0
			2	1	1		

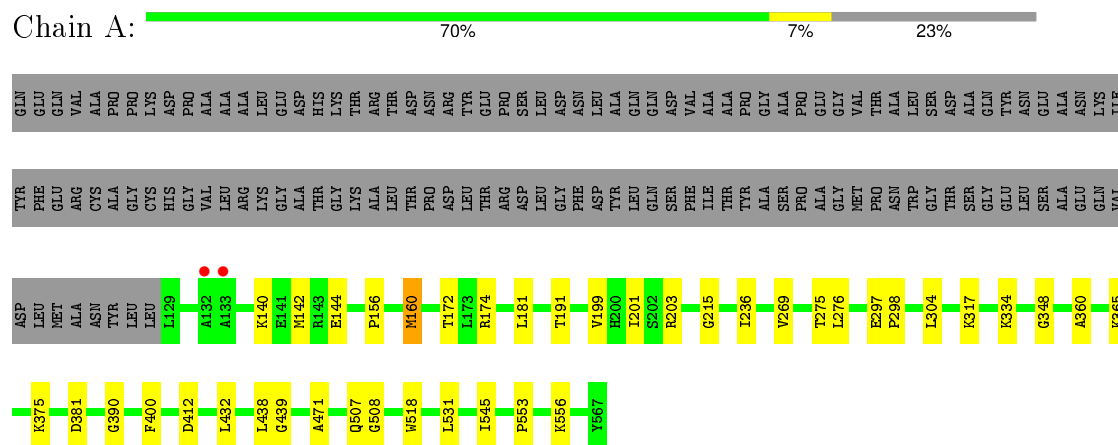
- Molecule 6 is water.

Mol	Chain	Residues	Atoms		ZeroOcc	AltConf
6	A	502	Total 502	O 502	0	0
6	B	576	Total 576	O 576	0	0

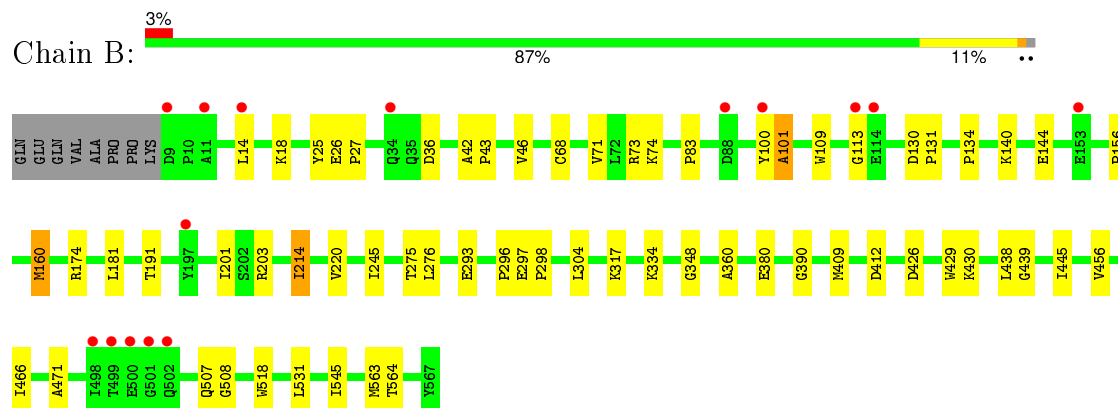
### 3 Residue-property plots [i](#)

These plots are drawn for all protein, RNA and DNA chains in the entry. The first graphic for a chain summarises the proportions of errors displayed in the second graphic. The second graphic shows the sequence view annotated by issues in geometry and electron density. Residues are color-coded according to the number of geometric quality criteria for which they contain at least one outlier: green = 0, yellow = 1, orange = 2 and red = 3 or more. A red dot above a residue indicates a poor fit to the electron density ( $RSRZ > 2$ ). Stretches of 2 or more consecutive residues without any outlier are shown as a green connector. Residues present in the sample, but not in the model, are shown in grey.

#### • Molecule 1: NITRITE REDUCTASE



#### • Molecule 1: NITRITE REDUCTASE



## 4 Data and refinement statistics

Property	Value	Source
Space group	P 1 21 1	Depositor
Cell constants a, b, c, $\alpha$ , $\beta$ , $\gamma$	106.70Å 60.60Å 100.10Å 90.00° 112.30° 90.00°	Depositor
Resolution (Å)	20.00 – 1.80 20.78 – 1.80	Depositor EDS
% Data completeness (in resolution range)	90.2 (20.00-1.80) 90.5 (20.78-1.80)	Depositor EDS
$R_{merge}$	(Not available)	Depositor
$R_{sym}$	0.05	Depositor
$\langle I/\sigma(I) \rangle$ <sup>1</sup>	2.07 (at 1.80Å)	Xtriage
Refinement program	X-PLOR 3.8	Depositor
R, $R_{free}$	0.181 , 0.200 0.208 , 0.220	Depositor DCC
$R_{free}$ test set	3966 reflections (4.18%)	DCC
Wilson B-factor (Å <sup>2</sup> )	14.0	Xtriage
Anisotropy	0.446	Xtriage
Bulk solvent $k_{sol}$ (e/Å <sup>3</sup> ), $B_{sol}$ (Å <sup>2</sup> )	0.39 , 52.0	EDS
Estimated twinning fraction	No twinning to report.	Xtriage
L-test for twinning <sup>2</sup>	$\langle  L  \rangle = 0.49$ , $\langle L^2 \rangle = 0.32$	Xtriage
Outliers	0 of 98928 reflections	Xtriage
$F_o, F_c$ correlation	0.93	EDS
Total number of atoms	9006	wwPDB-VP
Average B, all atoms (Å <sup>2</sup> )	18.0	wwPDB-VP

Xtriage's analysis on translational NCS is as follows: *The largest off-origin peak in the Patterson function is 4.72% of the height of the origin peak. No significant pseudotranslation is detected.*

<sup>1</sup>Intensities estimated from amplitudes.

<sup>2</sup>Theoretical values of  $\langle |L| \rangle$ ,  $\langle L^2 \rangle$  for acentric reflections are 0.5, 0.375 respectively for untwinned datasets, and 0.333, 0.2 for perfectly twinned datasets.



## 5 Model quality [i](#)

### 5.1 Standard geometry [i](#)

Bond lengths and bond angles in the following residue types are not validated in this section: HEM, DHE, 2NO, NO

The Z score for a bond length (or angle) is the number of standard deviations the observed value is removed from the expected value. A bond length (or angle) with  $|Z| > 5$  is considered an outlier worth inspection. RMSZ is the root-mean-square of all Z scores of the bond lengths (or angles).

Mol	Chain	Bond lengths		Bond angles	
		RMSZ	$\# Z  > 5$	RMSZ	$\# Z  > 5$
1	A	0.39	0/3520	0.71	3/4789 (0.1%)
1	B	0.38	0/4454	0.69	3/6061 (0.0%)
All	All	0.38	0/7974	0.70	6/10850 (0.1%)

There are no bond length outliers.

All (6) bond angle outliers are listed below:

Mol	Chain	Res	Type	Atoms	Z	Observed(°)	Ideal(°)
1	A	390	GLY	N-CA-C	-6.79	96.13	113.10
1	B	390	GLY	N-CA-C	-6.55	96.71	113.10
1	A	360	ALA	N-CA-C	-6.52	93.39	111.00
1	B	360	ALA	N-CA-C	-6.48	93.51	111.00
1	B	160	MET	CG-SD-CE	5.74	109.38	100.20
1	A	160	MET	CG-SD-CE	5.70	109.33	100.20

There are no chirality outliers.

There are no planarity outliers.

### 5.2 Too-close contacts [i](#)

In the following table, the Non-H and H(model) columns list the number of non-hydrogen atoms and hydrogen atoms in the chain respectively. The H(added) column lists the number of hydrogen atoms added and optimized by MolProbity. The Clashes column lists the number of clashes within the asymmetric unit, whereas Symm-Clashes lists symmetry related clashes.

Mol	Chain	Non-H	H(model)	H(added)	Clashes	Symm-Clashes
1	A	3434	0	3321	23	0
1	B	4348	0	4189	38	0
2	A	49	0	24	2	0

*Continued on next page...*

*Continued from previous page...*

Mol	Chain	Non-H	H(model)	H(added)	Clashes	Symm-Clashes
2	B	49	0	24	2	0
3	A	3	0	0	0	0
4	B	43	0	30	0	0
5	B	2	0	0	0	0
6	A	502	0	0	4	0
6	B	576	0	0	3	0
All	All	9006	0	7588	62	0

The all-atom clashscore is defined as the number of clashes found per 1000 atoms (including hydrogen atoms). The all-atom clashscore for this structure is 4.

All (62) close contacts within the same asymmetric unit are listed below, sorted by their clash magnitude.

Atom-1	Atom-2	Interatomic distance (Å)	Clash overlap (Å)
1:A:156:PRO:HB3	1:A:160:MET:SD	2.29	0.72
1:B:26:GLU:HG3	1:B:68:CYS:SG	2.32	0.68
1:B:25:TYR:HB2	1:B:409:MET:HE3	1.76	0.67
1:A:531:LEU:HB2	1:A:545:ILE:HB	1.79	0.63
1:B:156:PRO:HB3	1:B:160:MET:SD	2.40	0.61
1:B:74:LYS:HG3	1:B:296:PRO:HG3	1.83	0.60
1:B:160:MET:HE2	6:B:748:HOH:O	2.01	0.60
1:B:438:LEU:HG	1:B:471:ALA:HB2	1.85	0.58
1:B:43:PRO:HD2	1:B:46:VAL:HG21	1.86	0.56
1:B:201:ILE:HD11	1:B:245:ILE:HG22	1.87	0.56
6:A:1065:HOH:O	1:B:334:LYS:HE2	2.07	0.54
1:B:426:ASP:O	1:B:430:LYS:HD2	2.07	0.54
1:A:160:MET:CE	6:A:1076:HOH:O	2.57	0.53
1:A:201:ILE:HD12	1:A:203:ARG:HG2	1.91	0.52
1:B:42:ALA:HB1	1:B:46:VAL:HG23	1.92	0.52
1:B:380:GLU:HG3	1:B:429:TRP:O	2.11	0.51
1:B:14:LEU:O	1:B:18:LYS:HB2	2.11	0.51
1:A:304:LEU:HD21	1:A:348:GLY:HA2	1.93	0.50
1:B:100:TYR:O	1:B:101:ALA:HB3	2.13	0.49
1:B:531:LEU:HB2	1:B:545:ILE:HB	1.95	0.48
1:A:181:LEU:HD12	1:A:191:THR:CG2	2.43	0.48
1:B:214:ILE:HD12	1:B:220:VAL:HG22	1.96	0.48
1:B:409:MET:HE2	1:B:409:MET:HB3	1.57	0.48
1:B:73:ARG:NH1	1:B:131:PRO:HB3	2.28	0.47
1:A:297:GLU:N	1:A:298:PRO:HD3	2.29	0.47
1:A:201:ILE:HD13	2:A:602:DHE:O2A	2.15	0.47
1:B:275:THR:O	1:B:276:LEU:HB2	2.15	0.47

*Continued on next page...*

*Continued from previous page...*

Atom-1	Atom-2	Interatomic distance (Å)	Clash overlap (Å)
1:B:297:GLU:N	1:B:298:PRO:HD3	2.30	0.47
1:B:43:PRO:O	1:B:46:VAL:HG22	2.16	0.46
1:A:412:ASP:HB3	1:A:439:GLY:HA2	1.96	0.46
1:B:140:LYS:O	1:B:144:GLU:HG3	2.16	0.46
1:A:140:LYS:O	1:A:144:GLU:HG3	2.16	0.46
1:B:25:TYR:HB2	1:B:409:MET:CE	2.45	0.46
1:A:199:VAL:HA	1:A:215:GLY:HA2	1.97	0.45
1:A:160:MET:HE2	6:A:1076:HOH:O	2.16	0.45
1:A:142:MET:CE	1:A:269:VAL:HG21	2.46	0.45
1:B:304:LEU:HD21	1:B:348:GLY:HA2	1.98	0.45
1:B:101:ALA:HB1	1:B:113:GLY:O	2.17	0.44
1:B:445:ILE:HG13	1:B:456:VAL:HG22	1.99	0.44
1:A:400:PHE:HB3	1:A:432:LEU:HD13	1.99	0.44
1:B:83:PRO:HG2	1:B:130:ASP:HA	1.98	0.44
1:B:412:ASP:HB3	1:B:439:GLY:HA2	1.99	0.44
1:A:275:THR:O	1:A:276:LEU:HB2	2.18	0.44
1:B:181:LEU:HD12	1:B:191:THR:CG2	2.48	0.44
1:B:27:PRO:HA	2:B:602:DHE:HAB2	2.00	0.43
1:B:201:ILE:HD12	1:B:203:ARG:HG2	1.99	0.43
1:B:438:LEU:HB3	1:B:466:ILE:HG23	2.01	0.43
2:A:602:DHE:O2C	2:A:602:DHE:C2C	2.67	0.43
1:B:508:GLY:HA2	1:B:518:TRP:O	2.19	0.43
1:A:160:MET:HE3	6:A:1076:HOH:O	2.16	0.42
1:A:438:LEU:HG	1:A:471:ALA:HB2	2.01	0.42
1:A:236:ILE:HG22	1:A:276:LEU:HD13	2.01	0.42
1:B:43:PRO:HD2	1:B:46:VAL:CG2	2.49	0.42
1:A:365:LYS:HD3	1:A:381:ASP:HA	2.01	0.42
1:B:160:MET:CE	6:B:748:HOH:O	2.62	0.41
1:B:25:TYR:CZ	2:B:602:DHE:HGB2	2.56	0.41
1:A:508:GLY:HA2	1:A:518:TRP:O	2.21	0.41
1:B:563:MET:HG3	1:B:564:THR:HG23	2.03	0.41
1:A:556:LYS:HE2	1:A:556:LYS:HB2	1.79	0.41
1:A:334:LYS:HE2	6:B:1001:HOH:O	2.21	0.40
1:A:172:THR:O	1:A:553:PRO:HA	2.21	0.40
1:B:71:VAL:HG11	1:B:134:PRO:HG2	2.03	0.40

There are no symmetry-related clashes.

## 5.3 Torsion angles [i](#)

### 5.3.1 Protein backbone [i](#)

In the following table, the Percentiles column shows the percent Ramachandran outliers of the chain as a percentile score with respect to all X-ray entries followed by that with respect to entries of similar resolution.

The Analysed column shows the number of residues for which the backbone conformation was analysed, and the total number of residues.

Mol	Chain	Analysed	Favoured	Allowed	Outliers	Percentiles	
1	A	437/567 (77%)	414 (95%)	20 (5%)	3 (1%)	26	11
1	B	557/567 (98%)	530 (95%)	22 (4%)	5 (1%)	21	7
All	All	994/1134 (88%)	944 (95%)	42 (4%)	8 (1%)	24	8

All (8) Ramachandran outliers are listed below:

Mol	Chain	Res	Type
1	A	507	GLN
1	B	109	TRP
1	B	507	GLN
1	B	174	ARG
1	A	317	LYS
1	A	174	ARG
1	B	101	ALA
1	B	317	LYS

### 5.3.2 Protein sidechains [i](#)

In the following table, the Percentiles column shows the percent sidechain outliers of the chain as a percentile score with respect to all X-ray entries followed by that with respect to entries of similar resolution.

The Analysed column shows the number of residues for which the sidechain conformation was analysed, and the total number of residues.

Mol	Chain	Analysed	Rotameric	Outliers	Percentiles	
1	A	369/470 (78%)	368 (100%)	1 (0%)	94	94
1	B	463/470 (98%)	460 (99%)	3 (1%)	90	88
All	All	832/940 (88%)	828 (100%)	4 (0%)	92	91

All (4) residues with a non-rotameric sidechain are listed below:

Mol	Chain	Res	Type
1	A	375	LYS
1	B	36	ASP
1	B	214	ILE
1	B	293	GLU

Some sidechains can be flipped to improve hydrogen bonding and reduce clashes. All (3) such sidechains are listed below:

Mol	Chain	Res	Type
1	A	282	GLN
1	B	282	GLN
1	B	331	ASN

### 5.3.3 RNA [i](#)

There are no RNA molecules in this entry.

## 5.4 Non-standard residues in protein, DNA, RNA chains [i](#)

There are no non-standard protein/DNA/RNA residues in this entry.

## 5.5 Carbohydrates [i](#)

There are no carbohydrates in this entry.

## 5.6 Ligand geometry [i](#)

5 ligands are modelled in this entry.

In the following table, the Counts columns list the number of bonds (or angles) for which Mogul statistics could be retrieved, the number of bonds (or angles) that are observed in the model and the number of bonds (or angles) that are defined in the chemical component dictionary. The Link column lists molecule types, if any, to which the group is linked. The Z score for a bond length (or angle) is the number of standard deviations the observed value is removed from the expected value. A bond length (or angle) with  $|Z| > 2$  is considered an outlier worth inspection. RMSZ is the root-mean-square of all Z scores of the bond lengths (or angles).

Mol	Type	Chain	Res	Link	Bond lengths			Bond angles		
					Counts	RMSZ	# Z  > 2	Counts	RMSZ	# Z  > 2
2	DHE	A	602	1,3	29,56,56	1.96	8 (27%)	27,94,94	3.32	10 (37%)
3	2NO	A	603	2	1,2,2	0.05	0	0,1,1	0.00	-

Mol	Type	Chain	Res	Link	Bond lengths			Bond angles		
					Counts	RMSZ	# Z  > 2	Counts	RMSZ	# Z  > 2
4	HEM	B	601	1	30,50,50	2.39	8 (26%)	24,82,82	2.54	8 (33%)
2	DHE	B	602	1,5	29,56,56	1.95	8 (27%)	27,94,94	3.10	10 (37%)
5	NO	B	603	2	0,1,1	0.00	-	0,0,0	0.00	-

In the following table, the Chirals column lists the number of chiral outliers, the number of chiral centers analysed, the number of these observed in the model and the number defined in the chemical component dictionary. Similar counts are reported in the Torsion and Rings columns. '-' means no outliers of that kind were identified.

Mol	Type	Chain	Res	Link	Chirals	Torsions	Rings
2	DHE	A	602	1,3	-	0/12/108/108	0/0/8/8
3	2NO	A	603	2	-	0/0/0/0	0/0/0/0
4	HEM	B	601	1	-	0/10/54/54	0/0/8/8
2	DHE	B	602	1,5	-	0/12/108/108	0/0/8/8
5	NO	B	603	2	-	0/0/0/0	0/0/0/0

All (24) bond length outliers are listed below:

Mol	Chain	Res	Type	Atoms	Z	Observed(Å)	Ideal(Å)
4	B	601	HEM	C3B-C4B	-7.11	1.45	1.51
4	B	601	HEM	C2D-C3D	-5.85	1.37	1.54
4	B	601	HEM	C3D-C4D	-4.87	1.45	1.51
2	B	602	DHE	CAB-C3B	-4.79	1.48	1.56
2	B	602	DHE	CAC-C3C	-4.69	1.48	1.56
2	A	602	DHE	CAB-C3B	-4.55	1.49	1.56
2	A	602	DHE	CAC-C3C	-4.46	1.49	1.56
2	B	602	DHE	CBD-CAD	-3.59	1.28	1.53
2	A	602	DHE	CBD-CAD	-3.50	1.29	1.53
4	B	601	HEM	C2C-C1C	-2.94	1.47	1.52
2	A	602	DHE	CAD-C3D	-2.92	1.46	1.52
2	B	602	DHE	CAD-C3D	-2.36	1.48	1.52
4	B	601	HEM	C2B-C1B	-2.26	1.44	1.51
4	B	601	HEM	C2D-C1D	-2.12	1.44	1.51
2	A	602	DHE	CHB-C1B	2.01	1.38	1.35
2	B	602	DHE	FE-NC	2.11	2.08	1.97
2	B	602	DHE	CGB-C3B	2.59	1.60	1.54
2	A	602	DHE	FE-NB	2.81	2.06	1.95
2	B	602	DHE	CGC-C3C	3.03	1.61	1.54
2	A	602	DHE	CGB-C3B	3.06	1.61	1.54
2	B	602	DHE	FE-NB	3.07	2.07	1.95
2	A	602	DHE	CGC-C3C	3.57	1.62	1.54
4	B	601	HEM	CBC-CAC	3.95	1.52	1.29

*Continued on next page...*

*Continued from previous page...*

Mol	Chain	Res	Type	Atoms	Z	Observed(Å)	Ideal(Å)
4	B	601	HEM	CBB-CAB	4.08	1.52	1.29

All (28) bond angle outliers are listed below:

Mol	Chain	Res	Type	Atoms	Z	Observed(°)	Ideal(°)
4	B	601	HEM	C3B-CAB-CBB	-5.87	115.45	124.46
4	B	601	HEM	C3C-CAC-CBC	-4.68	117.28	124.46
2	A	602	DHE	CMD-C2D-C1D	-2.96	123.47	128.36
2	B	602	DHE	CMA-C3A-C4A	-2.92	123.54	128.36
2	A	602	DHE	CAD-C3D-C4D	-2.91	123.85	127.01
2	B	602	DHE	CMD-C2D-C1D	-2.65	123.97	128.36
2	A	602	DHE	CMA-C3A-C4A	-2.61	124.04	128.36
2	B	602	DHE	CAD-C3D-C4D	-2.34	124.46	127.01
2	A	602	DHE	CAA-C2A-C1A	-2.34	124.47	127.01
2	B	602	DHE	CHC-C1C-NC	2.07	126.87	124.45
2	A	602	DHE	CHB-C1B-NB	2.59	127.17	124.42
2	B	602	DHE	CHB-C1B-NB	2.82	127.41	124.42
4	B	601	HEM	CMD-C2D-C3D	2.88	127.08	114.35
4	B	601	HEM	C2D-C3D-C4D	2.91	106.44	101.50
2	B	602	DHE	CAA-CBA-CGA	3.37	118.92	112.75
2	A	602	DHE	CAA-CBA-CGA	3.39	118.96	112.75
4	B	601	HEM	CMB-C2B-C3B	3.92	126.31	116.53
4	B	601	HEM	CAD-C3D-C4D	4.03	126.69	112.47
4	B	601	HEM	CMC-C2C-C3C	4.46	127.67	116.53
4	B	601	HEM	CAD-C3D-C2D	4.74	126.84	113.22
2	B	602	DHE	C1C-NC-C4C	5.79	110.27	105.00
2	B	602	DHE	C1B-NB-C4B	6.58	110.47	106.90
2	A	602	DHE	CAD-CBD-CGD	6.65	124.93	112.75
2	A	602	DHE	C1C-NC-C4C	6.81	111.20	105.00
2	B	602	DHE	CAD-CBD-CGD	7.14	125.82	112.75
2	A	602	DHE	C1B-NB-C4B	8.24	111.38	106.90
2	B	602	DHE	CBD-CAD-C3D	8.38	127.55	112.53
2	A	602	DHE	CBD-CAD-C3D	8.48	127.74	112.53

There are no chirality outliers.

There are no torsion outliers.

There are no ring outliers.

2 monomers are involved in 4 short contacts:

Mol	Chain	Res	Type	Clashes	Symm-Clashes
2	A	602	DHE	2	0

*Continued on next page...*

*Continued from previous page...*

Mol	Chain	Res	Type	Clashes	Symm-Clashes
2	B	602	DHE	2	0

## 5.7 Other polymers [i](#)

There are no such residues in this entry.

## 5.8 Polymer linkage issues [i](#)

There are no chain breaks in this entry.



## 6 Fit of model and data ⓘ

### 6.1 Protein, DNA and RNA chains ⓘ

In the following table, the column labelled ‘#RSRZ> 2’ contains the number (and percentage) of RSRZ outliers, followed by percent RSRZ outliers for the chain as percentile scores relative to all X-ray entries and entries of similar resolution. The OWAB column contains the minimum, median, 95<sup>th</sup> percentile and maximum values of the occupancy-weighted average B-factor per residue. The column labelled ‘Q< 0.9’ lists the number of (and percentage) of residues with an average occupancy less than 0.9.

Mol	Chain	Analysed	<RSRZ>	#RSRZ>2	OWAB(Å <sup>2</sup> )	Q<0.9
1	A	439/567 (77%)	-0.36	2 (0%) 91 90	8, 13, 28, 47	0
1	B	559/567 (98%)	0.16	15 (2%) 58 53	8, 15, 36, 51	0
All	All	998/1134 (88%)	-0.07	17 (1%) 73 69	8, 14, 34, 51	0

All (17) RSRZ outliers are listed below:

Mol	Chain	Res	Type	RSRZ
1	B	499	THR	8.8
1	B	197	TYR	5.3
1	A	132	ALA	5.0
1	B	498	ILE	4.9
1	B	500	GLU	4.5
1	B	11	ALA	4.4
1	B	14	LEU	3.6
1	B	113	GLY	3.3
1	B	502	GLN	2.9
1	B	114	GLU	2.8
1	B	9	ASP	2.7
1	B	501	GLY	2.6
1	A	133	ALA	2.4
1	B	88	ASP	2.2
1	B	153	GLU	2.2
1	B	100	TYR	2.2
1	B	34	GLN	2.1

### 6.2 Non-standard residues in protein, DNA, RNA chains ⓘ

There are no non-standard protein/DNA/RNA residues in this entry.

### 6.3 Carbohydrates [i](#)

There are no carbohydrates in this entry.

### 6.4 Ligands [i](#)

In the following table, the Atoms column lists the number of modelled atoms in the group and the number defined in the chemical component dictionary. LLDF column lists the quality of electron density of the group with respect to its neighbouring residues in protein, DNA or RNA chains. The B-factors column lists the minimum, median, 95<sup>th</sup> percentile and maximum values of B factors of atoms in the group. The column labelled 'Q< 0.9' lists the number of atoms with occupancy less than 0.9.

Mol	Type	Chain	Res	Atoms	RSCC	RSR	LLDF	B-factors( $\text{\AA}^2$ )	Q<0.9
4	HEM	B	601	43/43	0.93	0.12	-0.18	15,19,25,26	0
2	DHE	A	602	49/49	0.97	0.08	-0.42	9,14,21,26	0
3	2NO	A	603	3/3	0.95	0.08	-0.61	19,19,22,24	0
2	DHE	B	602	49/49	0.95	0.09	-0.70	8,13,17,18	0
5	NO	B	603	2/2	0.94	0.15	-	16,16,16,21	0

### 6.5 Other polymers [i](#)

There are no such residues in this entry.