



Full wwPDB X-ray Structure Validation Report ⓘ

Feb 1, 2016 – 02:51 PM GMT

PDB ID : 4AQH
Title : Plasminogen activator inhibitor type-1 in complex with the inhibitor AZ3976
Authors : Fjellstrom, O.; Deinum, J.; Sjogren, T.; Johansson, C.; Geschwindner, S.;
Nerme, V.; Legnehed, A.; Mcpheat, J.; Olsson, K.; Bodin, C.; Gustafsson, D.
Deposited on : 2012-04-17
Resolution : 2.40 Å(reported)

This is a Full wwPDB X-ray Structure Validation Report for a publicly released PDB entry.
We welcome your comments at validation@mail.wwpdb.org
A user guide is available at
<http://wwpdb.org/validation/2016/XrayValidationReportHelp>
with specific help available everywhere you see the ⓘ symbol.

The following versions of software and data (see [references ⓘ](#)) were used in the production of this report:

MolProbity : 4.02b-467
Mogul : 1.7 (RC4), CSD as536be (2015)
Xtriage (Phenix) : 1.9-1692
EDS : rb-20026688
Percentile statistics : 20151230.v01 (using entries in the PDB archive December 30th 2015)
Refmac : 5.8.0135
CCP4 : 6.5.0
Ideal geometry (proteins) : Engh & Huber (2001)
Ideal geometry (DNA, RNA) : Parkinson et al. (1996)
Validation Pipeline (wwPDB-VP) : trunk26865

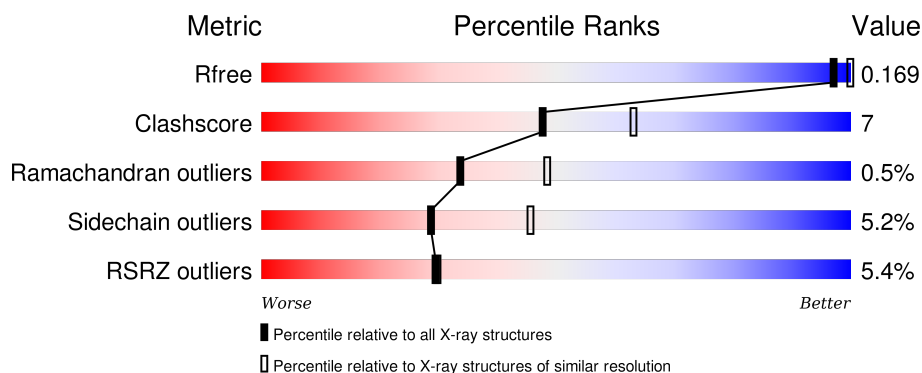
1 Overall quality at a glance

The following experimental techniques were used to determine the structure:

X-RAY DIFFRACTION

The reported resolution of this entry is 2.40 Å.

Percentile scores (ranging between 0-100) for global validation metrics of the entry are shown in the following graphic. The table shows the number of entries on which the scores are based.



Metric	Whole archive (#Entries)	Similar resolution (#Entries, resolution range(Å))
R_{free}	91344	2919 (2.40-2.40)
Clashscore	102246	3407 (2.40-2.40)
Ramachandran outliers	100387	3351 (2.40-2.40)
Sidechain outliers	100360	3352 (2.40-2.40)
RSRZ outliers	91569	2928 (2.40-2.40)

The table below summarises the geometric issues observed across the polymeric chains and their fit to the electron density. The red, orange, yellow and green segments on the lower bar indicate the fraction of residues that contain outliers for ≥ 3 , 2, 1 and 0 types of geometric quality criteria. A grey segment represents the fraction of residues that are not modelled. The numeric value for each fraction is indicated below the corresponding segment, with a dot representing fractions $\leq 5\%$. The upper red bar (where present) indicates the fraction of residues that have poor fit to the electron density. The numeric value is given above the bar.

Mol	Chain	Length	Quality of chain
1	A	383	<div> <div></div> <div> <div></div> <div>81%</div> <div>18%</div> <div>.</div> </div> </div>
1	B	383	<div> <div>4%</div> <div> <div></div> <div>80%</div> <div>19%</div> <div>.</div> </div> </div>
1	C	383	<div> <div>11%</div> <div> <div></div> <div>80%</div> <div>19%</div> <div>.</div> </div> </div>

2 Entry composition

There are 3 unique types of molecules in this entry. The entry contains 9428 atoms, of which 0 are hydrogens and 0 are deuteriums.

In the tables below, the ZeroOcc column contains the number of atoms modelled with zero occupancy, the AltConf column contains the number of residues with at least one atom in alternate conformation and the Trace column contains the number of residues modelled with at most 2 atoms.

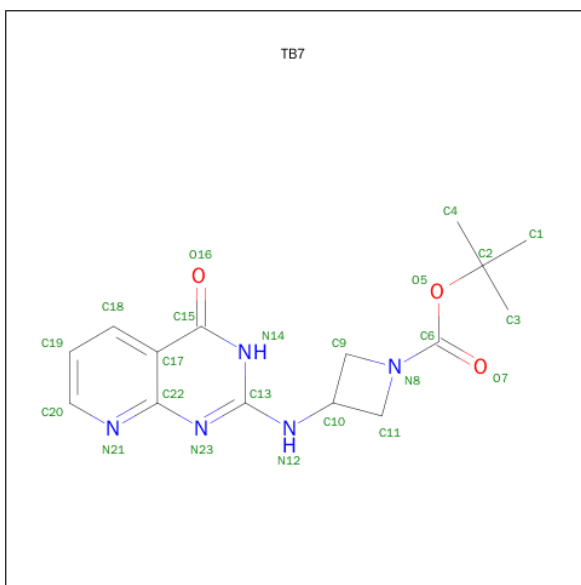
- Molecule 1 is a protein called PLASMINOGEN ACTIVATOR INHIBITOR 1.

Mol	Chain	Residues	Atoms					ZeroOcc	AltConf	Trace
1	A	382	Total	C	N	O	S	0	0	0
			3037	1944	521	555	17			
1	B	383	Total	C	N	O	S	0	0	0
			3041	1946	522	556	17			
1	C	382	Total	C	N	O	S	0	0	0
			3037	1944	521	555	17			

There are 12 discrepancies between the modelled and reference sequences:

Chain	Residue	Modelled	Actual	Comment	Reference
A	-3	GLY	-	EXPRESSION TAG	UNP P05121
A	-2	SER	-	EXPRESSION TAG	UNP P05121
A	-1	HIS	-	EXPRESSION TAG	UNP P05121
A	0	MET	-	EXPRESSION TAG	UNP P05121
B	-3	GLY	-	EXPRESSION TAG	UNP P05121
B	-2	SER	-	EXPRESSION TAG	UNP P05121
B	-1	HIS	-	EXPRESSION TAG	UNP P05121
B	0	MET	-	EXPRESSION TAG	UNP P05121
C	-3	GLY	-	EXPRESSION TAG	UNP P05121
C	-2	SER	-	EXPRESSION TAG	UNP P05121
C	-1	HIS	-	EXPRESSION TAG	UNP P05121
C	0	MET	-	EXPRESSION TAG	UNP P05121

- Molecule 2 is TERT-BUTYL 3-[(4-OXO-3H-PYRIDO[2,3-D]PYRIMIDIN-2-YL)AMINO]AZETIDINE-1-CARBOXYLATE (three-letter code: TB7) (formula: C₁₅H₁₉N₅O₃).



Mol	Chain	Residues	Atoms				ZeroOcc	AltConf
2	A	1	Total	C	N	O	0	0
			23	15	5	3		
2	B	1	Total	C	N	O	0	0
			23	15	5	3		
2	C	1	Total	C	N	O	0	0
			23	15	5	3		

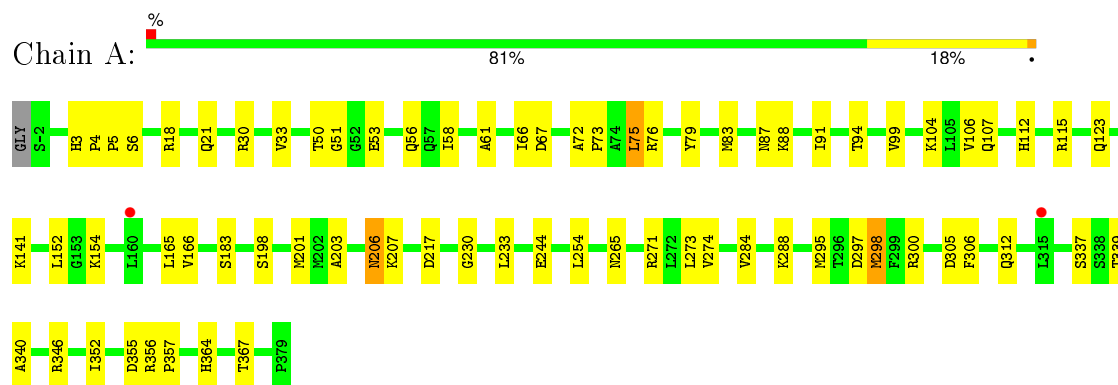
- Molecule 3 is water.

Mol	Chain	Residues	Atoms		ZeroOcc	AltConf
3	A	98	Total	O	0	0
			98	98		
3	B	78	Total	O	0	0
			78	78		
3	C	68	Total	O	0	0
			68	68		

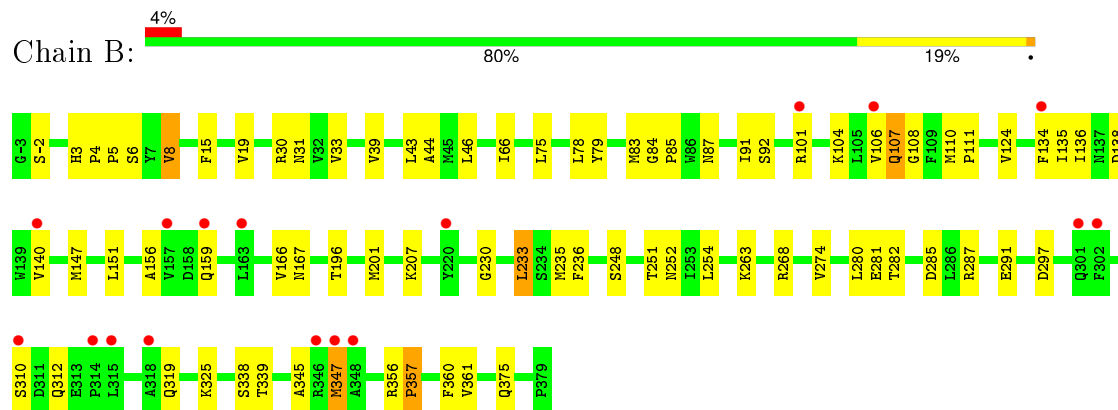
3 Residue-property plots [i](#)

These plots are drawn for all protein, RNA and DNA chains in the entry. The first graphic for a chain summarises the proportions of errors displayed in the second graphic. The second graphic shows the sequence view annotated by issues in geometry and electron density. Residues are color-coded according to the number of geometric quality criteria for which they contain at least one outlier: green = 0, yellow = 1, orange = 2 and red = 3 or more. A red dot above a residue indicates a poor fit to the electron density ($RSRZ > 2$). Stretches of 2 or more consecutive residues without any outlier are shown as a green connector. Residues present in the sample, but not in the model, are shown in grey.

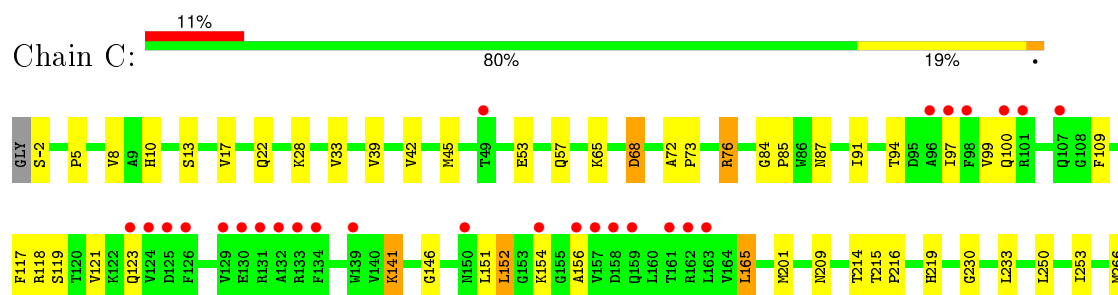
• Molecule 1: PLASMINOGEN ACTIVATOR INHIBITOR 1

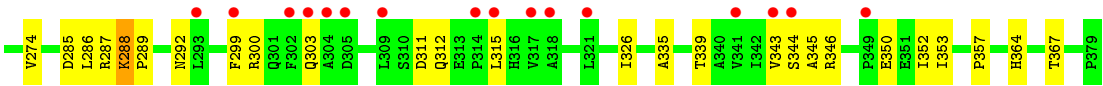


• Molecule 1: PLASMINOGEN ACTIVATOR INHIBITOR 1



• Molecule 1: PLASMINOGEN ACTIVATOR INHIBITOR 1





4 Data and refinement statistics

Property	Value	Source
Space group	P 31	Depositor
Cell constants a, b, c, α , β , γ	119.40 Å 119.40 Å 99.69 Å 90.00° 90.00° 120.00°	Depositor
Resolution (Å)	60.01 – 2.40 45.90 – 2.40	Depositor EDS
% Data completeness (in resolution range)	98.7 (60.01-2.40) 98.7 (45.90-2.40)	Depositor EDS
R_{merge}	0.10	Depositor
R_{sym}	(Not available)	Depositor
$\langle I/\sigma(I) \rangle$ ¹	2.40 (at 2.39 Å)	Xtriage
Refinement program	REFMAC 5.5.0066	Depositor
R, R_{free}	0.157 , 0.181 0.158 , 0.169	Depositor DCC
R_{free} test set	3111 reflections (5.34%)	DCC
Wilson B-factor (Å ²)	41.7	Xtriage
Anisotropy	0.145	Xtriage
Bulk solvent k_{sol} (e/Å ³), B_{sol} (Å ²)	0.33 , 52.1	EDS
Estimated twinning fraction	0.655 for H, K, L 0.345 for K, H, -L 0.099 for -h,-k,l 0.339 for h,-h-k,-l 0.098 for -k,-h,-l	Xtriage
Reported twinning fraction	0.655 for H, K, L 0.345 for K, H, -L	Depositor
L-test for twinning ²	$\langle L \rangle = 0.39$, $\langle L^2 \rangle = 0.22$	Xtriage
Outliers	0 of 62153 reflections	Xtriage
F_o, F_c correlation	0.90	EDS
Total number of atoms	9428	wwPDB-VP
Average B, all atoms (Å ²)	45.0	wwPDB-VP

Xtriage's analysis on translational NCS is as follows: *The largest off-origin peak in the Patterson function is 5.04% of the height of the origin peak. No significant pseudotranslation is detected.*

¹Intensities estimated from amplitudes.

²Theoretical values of $\langle |L| \rangle$, $\langle L^2 \rangle$ for acentric reflections are 0.5, 0.375 respectively for untwinned datasets, and 0.333, 0.2 for perfectly twinned datasets.

5 Model quality

5.1 Standard geometry

Bond lengths and bond angles in the following residue types are not validated in this section: TB7

The Z score for a bond length (or angle) is the number of standard deviations the observed value is removed from the expected value. A bond length (or angle) with $|Z| > 5$ is considered an outlier worth inspection. RMSZ is the root-mean-square of all Z scores of the bond lengths (or angles).

Mol	Chain	Bond lengths		Bond angles	
		RMSZ	$\# Z > 5$	RMSZ	$\# Z > 5$
1	A	0.75	0/3112	0.74	0/4219
1	B	0.64	0/3116	0.70	0/4224
1	C	0.58	0/3112	0.65	0/4219
All	All	0.66	0/9340	0.70	0/12662

There are no bond length outliers.

There are no bond angle outliers.

There are no chirality outliers.

There are no planarity outliers.

5.2 Too-close contacts

In the following table, the Non-H and H(model) columns list the number of non-hydrogen atoms and hydrogen atoms in the chain respectively. The H(added) column lists the number of hydrogen atoms added and optimized by MolProbity. The Clashes column lists the number of clashes within the asymmetric unit, whereas Symm-Clashes lists symmetry related clashes.

Mol	Chain	Non-H	H(model)	H(added)	Clashes	Symm-Clashes
1	A	3037	0	3028	49	0
1	B	3041	0	3031	44	0
1	C	3037	0	3028	43	0
2	A	23	0	19	0	0
2	B	23	0	19	1	0
2	C	23	0	19	2	0
3	A	98	0	0	2	0
3	B	78	0	0	2	0
3	C	68	0	0	1	0
All	All	9428	0	9144	135	0

The all-atom clashscore is defined as the number of clashes found per 1000 atoms (including hydrogen atoms). The all-atom clashscore for this structure is 7.

All (135) close contacts within the same asymmetric unit are listed below, sorted by their clash magnitude.

Atom-1	Atom-2	Interatomic distance (Å)	Clash overlap (Å)
1:A:201:MET:CE	1:A:274:VAL:HG12	1.76	1.14
1:A:206:ASN:HD22	1:A:207:LYS:H	1.11	0.92
1:B:201:MET:CE	1:B:274:VAL:HG12	1.98	0.92
1:A:201:MET:HE2	1:A:274:VAL:HG12	1.58	0.85
1:B:151:LEU:HD22	1:B:338:SER:OG	1.77	0.84
1:A:104:LYS:H	1:A:312:GLN:NE2	1.76	0.83
1:A:201:MET:HE3	1:A:274:VAL:HG12	1.59	0.82
1:A:206:ASN:HD22	1:A:207:LYS:N	1.80	0.80
1:A:72:ALA:HB3	1:A:73:PRO:HD3	1.67	0.76
1:B:201:MET:HE2	1:B:274:VAL:HG12	1.71	0.73
1:A:61:ALA:HB3	1:A:295:MET:CE	2.23	0.69
1:B:3:HIS:HD2	1:B:6:SER:OG	1.76	0.69
1:A:61:ALA:HB3	1:A:295:MET:HE3	1.77	0.67
1:A:3:HIS:HE1	3:A:2003:HOH:O	1.77	0.67
1:A:3:HIS:HD2	1:A:6:SER:OG	1.78	0.66
1:A:206:ASN:ND2	1:A:207:LYS:H	1.88	0.66
1:A:295:MET:HB3	1:A:298:MET:CE	2.26	0.65
1:B:281:GLU:HG2	1:B:325:LYS:HG2	1.78	0.65
1:A:123:GLN:HE21	1:B:107:GLN:HE21	1.44	0.64
1:A:201:MET:CE	1:A:274:VAL:CG1	2.65	0.64
1:B:5:PRO:O	1:B:8:VAL:HG22	1.98	0.63
1:B:44:ALA:HB1	1:B:66:ILE:HD12	1.78	0.63
1:C:151:LEU:HG	1:C:152:LEU:HD13	1.81	0.62
1:C:287:ARG:HG3	1:C:299:PHE:CE1	2.34	0.61
1:C:76:ARG:NH2	2:C:1380:TB7:N21	2.48	0.61
1:B:104:LYS:HB2	1:B:312:GLN:NE2	2.16	0.61
2:C:1380:TB7:H43C	2:C:1380:TB7:O7	2.01	0.60
1:B:108:GLY:O	1:B:111:PRO:HD2	2.02	0.60
1:A:58:ILE:HG23	1:A:295:MET:HE2	1.83	0.60
1:C:250:LEU:O	1:C:253:ILE:HG13	2.01	0.60
1:B:91:ILE:HD11	1:B:233:LEU:HD11	1.83	0.59
1:B:4:PRO:HB2	1:B:5:PRO:HD3	1.84	0.59
1:C:53:GLU:O	1:C:57:GLN:HG3	2.03	0.59
1:A:18:ARG:HA	1:A:21:GLN:HE21	1.67	0.58
1:A:364:HIS:HD2	1:A:367:THR:OG1	1.86	0.58
1:B:201:MET:HE2	1:B:274:VAL:CG1	2.33	0.58
1:A:295:MET:HB3	1:A:298:MET:HE2	1.84	0.58

Continued on next page...

Continued from previous page...

Atom-1	Atom-2	Interatomic distance (Å)	Clash overlap (Å)
1:A:201:MET:HE2	1:A:274:VAL:CG1	2.29	0.57
1:B:43:LEU:HD13	1:B:46:LEU:HD23	1.86	0.57
1:B:201:MET:HE1	1:B:274:VAL:HG12	1.82	0.57
1:B:156:ALA:O	1:B:345:ALA:HB3	2.04	0.57
1:B:134:PHE:O	1:B:138:ASP:HB2	2.04	0.57
1:A:30:ARG:HG3	1:A:352:ILE:HG23	1.88	0.56
1:B:15:PHE:O	1:B:19:VAL:HG23	2.06	0.56
1:B:156:ALA:O	1:B:345:ALA:CB	2.53	0.56
1:A:203:ALA:HA	1:A:273:LEU:O	2.06	0.55
1:C:13:SER:O	1:C:17:VAL:HG23	2.07	0.54
1:C:326:ILE:HG13	1:C:335:ALA:HB2	1.88	0.54
1:C:99:VAL:HG22	1:C:100:GLN:H	1.71	0.54
1:A:87:ASN:OD1	1:A:364:HIS:HE1	1.92	0.53
1:C:364:HIS:HD2	1:C:367:THR:OG1	1.92	0.53
1:B:33:VAL:HG13	1:B:360:PHE:HZ	1.72	0.52
1:A:58:ILE:HA	1:A:295:MET:HE3	1.91	0.52
1:C:65:LYS:O	1:C:68:ASP:HB2	2.09	0.52
1:C:288:LYS:HD3	1:C:292:ASN:HD21	1.74	0.52
1:A:76:ARG:CZ	1:A:76:ARG:HA	2.39	0.52
1:B:3:HIS:CD2	1:B:6:SER:OG	2.60	0.51
1:C:97:ILE:HG12	1:C:165:LEU:HD23	1.92	0.51
1:A:88:LYS:HD2	1:A:230:GLY:HA2	1.93	0.51
1:C:5:PRO:O	1:C:8:VAL:HG22	2.11	0.51
1:B:79:TYR:O	1:B:83:MET:HG2	2.12	0.50
1:C:201:MET:CE	1:C:274:VAL:HG12	2.41	0.50
1:C:76:ARG:HA	1:C:76:ARG:NE	2.27	0.49
1:A:201:MET:HE3	1:A:274:VAL:CG1	2.34	0.49
1:A:295:MET:HB3	1:A:298:MET:HE3	1.93	0.49
1:C:117:PHE:C	1:C:119:SER:H	2.14	0.49
1:C:288:LYS:HD3	1:C:292:ASN:ND2	2.28	0.49
1:C:99:VAL:HG22	1:C:100:GLN:N	2.28	0.48
1:C:91:ILE:HD11	1:C:233:LEU:HD21	1.95	0.48
1:C:22:GLN:HB2	1:C:289:PRO:HB3	1.96	0.48
1:A:112:HIS:CD2	1:A:115:ARG:HH22	2.32	0.48
1:B:207:LYS:HD2	1:B:268:ARG:HG2	1.96	0.48
1:A:58:ILE:HA	1:A:295:MET:CE	2.44	0.47
1:A:61:ALA:HB3	1:A:295:MET:HE1	1.93	0.47
1:C:287:ARG:HG3	1:C:299:PHE:CD1	2.50	0.47
1:B:78:LEU:HD23	2:B:1380:TB7:O7	2.15	0.47
1:A:355:ASP:O	1:A:356:ARG:C	2.52	0.46
1:B:79:TYR:CE2	1:B:83:MET:HG3	2.50	0.46

Continued on next page...

Continued from previous page...

Atom-1	Atom-2	Interatomic distance (Å)	Clash overlap (Å)
1:C:352:ILE:HG22	1:C:353:ILE:N	2.30	0.46
1:A:297:ASP:OD1	1:A:300:ARG:NH2	2.49	0.46
1:B:251:THR:HG21	1:B:375:GLN:OE1	2.15	0.46
1:B:106:VAL:HG13	1:B:310:SER:HA	1.96	0.46
1:A:76:ARG:NE	1:A:76:ARG:HA	2.30	0.46
1:B:356:ARG:HG3	3:B:2077:HOH:O	2.16	0.46
1:B:87:ASN:O	1:B:230:GLY:HA3	2.16	0.46
1:C:156:ALA:O	1:C:345:ALA:HB3	2.15	0.45
1:C:209:ASN:HB3	1:C:266:MET:SD	2.56	0.45
1:B:287:ARG:O	1:B:291:GLU:HG3	2.16	0.45
1:C:343:VAL:O	1:C:344:SER:HB2	2.16	0.45
1:B:84:GLY:HA2	1:B:85:PRO:HD3	1.65	0.45
1:C:10:HIS:HE1	3:C:2065:HOH:O	2.00	0.45
1:A:166:VAL:HA	1:A:339:THR:O	2.17	0.44
1:A:107:GLN:HE22	1:B:104:LYS:HA	1.83	0.44
1:A:79:TYR:CZ	1:A:83:MET:HG3	2.52	0.44
1:A:66:ILE:HD11	1:A:75:LEU:HD21	1.99	0.44
1:C:42:VAL:HA	1:C:45:MET:CE	2.48	0.43
1:A:154:LYS:HB3	1:A:154:LYS:HE3	1.83	0.43
1:B:166:VAL:HG12	1:B:167:ASN:N	2.34	0.43
1:B:156:ALA:O	1:B:319:GLN:NE2	2.51	0.43
1:C:288:LYS:N	1:C:289:PRO:CD	2.82	0.43
1:C:201:MET:HE2	1:C:274:VAL:HG12	1.99	0.43
1:B:248:SER:O	1:B:252:ASN:ND2	2.52	0.43
1:C:285:ASP:HB3	1:C:350:GLU:OE2	2.18	0.43
1:C:109:PHE:CD1	1:C:109:PHE:C	2.91	0.43
1:C:286:LEU:C	1:C:289:PRO:HD2	2.39	0.43
1:B:136:ILE:O	1:B:140:VAL:HG23	2.19	0.43
1:A:4:PRO:HB2	1:A:5:PRO:HD3	2.00	0.42
1:C:39:VAL:HA	1:C:339:THR:HG21	2.01	0.42
1:A:87:ASN:O	1:A:230:GLY:HA3	2.20	0.42
1:C:214:THR:HA	1:C:219:HIS:O	2.20	0.42
1:B:356:ARG:HA	1:B:357:PRO:HD3	1.93	0.42
1:C:84:GLY:HA2	1:C:85:PRO:HD3	1.96	0.42
1:C:123:GLN:HE21	1:C:123:GLN:HB2	1.71	0.42
1:A:265:ASN:HB3	3:A:2069:HOH:O	2.20	0.42
1:C:300:ARG:HB2	1:C:303:GLN:HB2	2.01	0.42
1:A:50:THR:HA	1:A:306:PHE:HA	2.01	0.42
1:A:112:HIS:CD2	1:A:115:ARG:NH2	2.87	0.41
1:C:141:LYS:HG2	1:C:146:GLY:HA2	2.02	0.41
1:B:235:MET:HA	1:B:361:VAL:O	2.20	0.41

Continued on next page...

Continued from previous page...

Atom-1	Atom-2	Interatomic distance (Å)	Clash overlap (Å)
1:A:165:LEU:O	1:A:340:ALA:HA	2.20	0.41
1:B:236:PHE:HZ	1:B:263:LYS:HD2	1.85	0.41
1:B:33:VAL:HG22	1:B:280:LEU:HD23	2.03	0.41
1:C:72:ALA:HB3	1:C:73:PRO:HD3	2.02	0.41
1:A:91:ILE:HD11	1:A:233:LEU:HD21	2.03	0.41
1:A:51:GLY:O	1:A:305:ASP:HB3	2.21	0.41
1:A:53:GLU:HA	1:A:56:GLN:HB3	2.03	0.41
1:B:39:VAL:HA	1:B:339:THR:HG21	2.02	0.41
1:C:352:ILE:O	1:C:353:ILE:HD13	2.21	0.40
1:C:117:PHE:O	1:C:119:SER:N	2.53	0.40
1:C:215:THR:HB	1:C:216:PRO:HD2	2.03	0.40
1:B:347:MET:SD	1:B:347:MET:N	2.95	0.40
1:A:30:ARG:NH2	1:A:284:VAL:HG12	2.36	0.40
1:B:30:ARG:NH2	3:B:2010:HOH:O	2.53	0.40
1:B:108:GLY:C	1:B:111:PRO:HD2	2.42	0.40
1:C:87:ASN:O	1:C:230:GLY:HA3	2.21	0.40

There are no symmetry-related clashes.

5.3 Torsion angles [i](#)

5.3.1 Protein backbone [i](#)

In the following table, the Percentiles column shows the percent Ramachandran outliers of the chain as a percentile score with respect to all X-ray entries followed by that with respect to entries of similar resolution.

The Analysed column shows the number of residues for which the backbone conformation was analysed, and the total number of residues.

Mol	Chain	Analysed	Favoured	Allowed	Outliers	Percentiles	
1	A	380/383 (99%)	369 (97%)	10 (3%)	1 (0%)	46	63
1	B	381/383 (100%)	370 (97%)	9 (2%)	2 (0%)	34	48
1	C	380/383 (99%)	358 (94%)	19 (5%)	3 (1%)	24	35
All	All	1141/1149 (99%)	1097 (96%)	38 (3%)	6 (0%)	34	48

All (6) Ramachandran outliers are listed below:

Mol	Chain	Res	Type
1	B	-2	SER

Continued on next page...

Continued from previous page...

Mol	Chain	Res	Type
1	C	118	ARG
1	C	312	GLN
1	C	357	PRO
1	A	357	PRO
1	B	357	PRO

5.3.2 Protein sidechains ⓘ

In the following table, the Percentiles column shows the percent sidechain outliers of the chain as a percentile score with respect to all X-ray entries followed by that with respect to entries of similar resolution.

The Analysed column shows the number of residues for which the sidechain conformation was analysed, and the total number of residues.

Mol	Chain	Analysed	Rotameric	Outliers	Percentiles	
1	A	336/336 (100%)	317 (94%)	19 (6%)	25	40
1	B	336/336 (100%)	318 (95%)	18 (5%)	27	43
1	C	336/336 (100%)	321 (96%)	15 (4%)	34	52
All	All	1008/1008 (100%)	956 (95%)	52 (5%)	29	45

All (52) residues with a non-rotameric sidechain are listed below:

Mol	Chain	Res	Type
1	A	33	VAL
1	A	67	ASP
1	A	75	LEU
1	A	94	THR
1	A	99	VAL
1	A	106	VAL
1	A	141	LYS
1	A	152	LEU
1	A	183	SER
1	A	198	SER
1	A	206	ASN
1	A	217	ASP
1	A	244	GLU
1	A	254	LEU
1	A	271	ARG
1	A	288	LYS
1	A	298	MET

Continued on next page...

Continued from previous page...

Mol	Chain	Res	Type
1	A	337	SER
1	A	346	ARG
1	B	8	VAL
1	B	31	ASN
1	B	75	LEU
1	B	92	SER
1	B	101	ARG
1	B	107	GLN
1	B	110	MET
1	B	124	VAL
1	B	135	ILE
1	B	147	MET
1	B	159	GLN
1	B	196	THR
1	B	233	LEU
1	B	254	LEU
1	B	282	THR
1	B	285	ASP
1	B	297	ASP
1	B	347	MET
1	C	-2	SER
1	C	28	LYS
1	C	33	VAL
1	C	68	ASP
1	C	76	ARG
1	C	94	THR
1	C	121	VAL
1	C	141	LYS
1	C	152	LEU
1	C	154	LYS
1	C	165	LEU
1	C	288	LYS
1	C	311	ASP
1	C	315	LEU
1	C	346	ARG

Some sidechains can be flipped to improve hydrogen bonding and reduce clashes. All (22) such sidechains are listed below:

Mol	Chain	Res	Type
1	A	3	HIS
1	A	21	GLN
1	A	25	GLN

Continued on next page...

Continued from previous page...

Mol	Chain	Res	Type
1	A	123	GLN
1	A	143	HIS
1	A	190	HIS
1	A	206	ASN
1	A	312	GLN
1	A	364	HIS
1	B	3	HIS
1	B	25	GLN
1	B	31	ASN
1	B	143	HIS
1	B	364	HIS
1	C	3	HIS
1	C	21	GLN
1	C	25	GLN
1	C	100	GLN
1	C	123	GLN
1	C	292	ASN
1	C	303	GLN
1	C	364	HIS

5.3.3 RNA ⓘ

There are no RNA molecules in this entry.

5.4 Non-standard residues in protein, DNA, RNA chains ⓘ

There are no non-standard protein/DNA/RNA residues in this entry.

5.5 Carbohydrates ⓘ

There are no carbohydrates in this entry.

5.6 Ligand geometry ⓘ

3 ligands are modelled in this entry.

In the following table, the Counts columns list the number of bonds (or angles) for which Mogul statistics could be retrieved, the number of bonds (or angles) that are observed in the model and the number of bonds (or angles) that are defined in the chemical component dictionary. The Link column lists molecule types, if any, to which the group is linked. The Z score for a bond length (or angle) is the number of standard deviations the observed value is removed from the expected

value. A bond length (or angle) with $|Z| > 2$ is considered an outlier worth inspection. RMSZ is the root-mean-square of all Z scores of the bond lengths (or angles).

Mol	Type	Chain	Res	Link	Bond lengths			Bond angles		
					Counts	RMSZ	$\# Z > 2$	Counts	RMSZ	$\# Z > 2$
2	TB7	A	1380	-	23,25,25	1.81	5 (21%)	25,37,37	2.88	9 (36%)
2	TB7	B	1380	-	23,25,25	1.35	4 (17%)	25,37,37	3.03	10 (40%)
2	TB7	C	1380	-	23,25,25	1.39	4 (17%)	25,37,37	3.03	9 (36%)

In the following table, the Chirals column lists the number of chiral outliers, the number of chiral centers analysed, the number of these observed in the model and the number defined in the chemical component dictionary. Similar counts are reported in the Torsion and Rings columns. '-' means no outliers of that kind were identified.

Mol	Type	Chain	Res	Link	Chirals	Torsions	Rings
2	TB7	A	1380	-	-	0/13/21/21	0/3/3/3
2	TB7	B	1380	-	-	0/13/21/21	0/3/3/3
2	TB7	C	1380	-	-	0/13/21/21	0/3/3/3

All (13) bond length outliers are listed below:

Mol	Chain	Res	Type	Atoms	Z	Observed(Å)	Ideal(Å)
2	C	1380	TB7	O5-C2	-2.57	1.43	1.48
2	C	1380	TB7	C22-N21	-2.45	1.33	1.37
2	B	1380	TB7	O5-C2	-2.12	1.44	1.48
2	C	1380	TB7	C15-N14	2.03	1.36	1.33
2	B	1380	TB7	C6-N8	2.04	1.39	1.35
2	C	1380	TB7	C15-C17	2.19	1.45	1.41
2	A	1380	TB7	O5-C6	2.27	1.38	1.34
2	B	1380	TB7	C13-N12	2.28	1.37	1.34
2	B	1380	TB7	C22-N23	2.42	1.41	1.36
2	A	1380	TB7	C22-N23	2.74	1.41	1.36
2	A	1380	TB7	C15-N14	2.86	1.38	1.33
2	A	1380	TB7	C13-N12	3.67	1.39	1.34
2	A	1380	TB7	C15-C17	3.77	1.47	1.41

All (28) bond angle outliers are listed below:

Mol	Chain	Res	Type	Atoms	Z	Observed(°)	Ideal(°)
2	C	1380	TB7	C2-O5-C6	-7.51	112.35	121.00
2	B	1380	TB7	C13-N12-C10	-5.87	116.97	123.51
2	A	1380	TB7	C13-N12-C10	-4.72	118.26	123.51
2	C	1380	TB7	N12-C13-N14	-4.49	110.39	116.95

Continued on next page...

Continued from previous page...

Mol	Chain	Res	Type	Atoms	Z	Observed(°)	Ideal(°)
2	A	1380	TB7	N23-C13-N14	-3.91	120.20	126.22
2	B	1380	TB7	N12-C13-N14	-3.77	111.44	116.95
2	C	1380	TB7	C13-N12-C10	-3.66	119.44	123.51
2	A	1380	TB7	N12-C13-N14	-3.44	111.93	116.95
2	B	1380	TB7	N23-C13-N14	-3.40	120.98	126.22
2	B	1380	TB7	C19-C18-C17	-2.96	115.69	120.79
2	C	1380	TB7	C19-C18-C17	-2.64	116.24	120.79
2	C	1380	TB7	N23-C13-N14	-2.23	122.79	126.22
2	A	1380	TB7	C11-N8-C9	-2.15	92.23	94.88
2	B	1380	TB7	C20-N21-C22	-2.14	113.68	116.44
2	A	1380	TB7	C2-O5-C6	-2.12	118.56	121.00
2	C	1380	TB7	C11-N8-C9	-2.06	92.34	94.88
2	B	1380	TB7	C13-N23-C22	2.31	117.88	115.09
2	B	1380	TB7	C19-C20-N21	2.41	127.73	123.94
2	A	1380	TB7	C18-C17-C22	2.91	120.79	116.93
2	C	1380	TB7	C18-C17-C22	3.33	121.35	116.93
2	A	1380	TB7	C13-N23-C22	3.83	119.70	115.09
2	B	1380	TB7	C18-C17-C22	4.52	122.93	116.93
2	C	1380	TB7	N12-C13-N23	6.76	126.82	116.95
2	B	1380	TB7	C15-N14-C13	7.25	125.86	115.31
2	B	1380	TB7	N12-C13-N23	7.27	127.56	116.95
2	C	1380	TB7	C15-N14-C13	7.34	125.98	115.31
2	A	1380	TB7	C15-N14-C13	7.37	126.03	115.31
2	A	1380	TB7	N12-C13-N23	7.47	127.86	116.95

There are no chirality outliers.

There are no torsion outliers.

There are no ring outliers.

2 monomers are involved in 3 short contacts:

Mol	Chain	Res	Type	Clashes	Symm-Clashes
2	B	1380	TB7	1	0
2	C	1380	TB7	2	0

5.7 Other polymers ⓘ

There are no such residues in this entry.

5.8 Polymer linkage issues ⓘ

There are no chain breaks in this entry.

6 Fit of model and data ⓘ

6.1 Protein, DNA and RNA chains ⓘ

In the following table, the column labelled ‘#RSRZ> 2’ contains the number (and percentage) of RSRZ outliers, followed by percent RSRZ outliers for the chain as percentile scores relative to all X-ray entries and entries of similar resolution. The OWAB column contains the minimum, median, 95th percentile and maximum values of the occupancy-weighted average B-factor per residue. The column labelled ‘Q< 0.9’ lists the number of (and percentage) of residues with an average occupancy less than 0.9.

Mol	Chain	Analysed	<RSRZ>	#RSRZ>2	OWAB(Å ²)	Q<0.9
1	A	382/383 (99%)	-0.19	2 (0%) 91 91	23, 36, 51, 62	0
1	B	383/383 (100%)	0.07	17 (4%) 38 39	31, 44, 67, 75	0
1	C	382/383 (99%)	0.41	43 (11%) 7 7	29, 50, 82, 92	0
All	All	1147/1149 (99%)	0.10	62 (5%) 29 30	23, 43, 72, 92	0

All (62) RSRZ outliers are listed below:

Mol	Chain	Res	Type	RSRZ
1	C	343	VAL	8.1
1	C	126	PHE	5.3
1	B	314	PRO	4.9
1	C	159	GLN	4.6
1	C	315	LEU	4.3
1	C	97	ILE	4.3
1	C	314	PRO	4.2
1	C	157	VAL	4.0
1	C	161	THR	3.9
1	B	302	PHE	3.9
1	B	157	VAL	3.8
1	C	123	GLN	3.8
1	C	134	PHE	3.8
1	C	299	PHE	3.4
1	C	125	ASP	3.4
1	C	303	GLN	3.4
1	B	315	LEU	3.3
1	C	156	ALA	3.3
1	C	162	ARG	3.3
1	C	317	VAL	3.2
1	C	132	ALA	3.2
1	C	304	ALA	3.1
1	C	98	PHE	3.1

Continued on next page...

Continued from previous page...

Mol	Chain	Res	Type	RSRZ
1	C	130	GLU	3.0
1	C	96	ALA	2.9
1	C	150	ASN	2.9
1	C	101	ARG	2.9
1	C	349	PRO	2.8
1	B	159	GLN	2.8
1	B	220	TYR	2.8
1	C	158	ASP	2.8
1	C	131	ARG	2.7
1	B	163	LEU	2.7
1	C	344	SER	2.7
1	B	106	VAL	2.7
1	C	318	ALA	2.7
1	B	348	ALA	2.7
1	C	321	LEU	2.6
1	C	163	LEU	2.6
1	C	139	TRP	2.6
1	B	347	MET	2.6
1	B	346	ARG	2.5
1	C	107	GLN	2.5
1	C	133	ARG	2.5
1	B	310	SER	2.4
1	C	100	GLN	2.4
1	B	301	GLN	2.3
1	C	341	VAL	2.3
1	C	124	VAL	2.3
1	B	318	ALA	2.3
1	B	140	VAL	2.3
1	C	154	LYS	2.2
1	A	315	LEU	2.2
1	C	302	PHE	2.2
1	C	293	LEU	2.2
1	C	129	VAL	2.1
1	B	101	ARG	2.1
1	A	160	LEU	2.1
1	C	309	LEU	2.1
1	C	305	ASP	2.0
1	B	134	PHE	2.0
1	C	49	THR	2.0

6.2 Non-standard residues in protein, DNA, RNA chains [i](#)

There are no non-standard protein/DNA/RNA residues in this entry.

6.3 Carbohydrates [i](#)

There are no carbohydrates in this entry.

6.4 Ligands [i](#)

In the following table, the Atoms column lists the number of modelled atoms in the group and the number defined in the chemical component dictionary. LLDF column lists the quality of electron density of the group with respect to its neighbouring residues in protein, DNA or RNA chains. The B-factors column lists the minimum, median, 95th percentile and maximum values of B factors of atoms in the group. The column labelled 'Q< 0.9' lists the number of atoms with occupancy less than 0.9.

Mol	Type	Chain	Res	Atoms	RSCC	RSR	LLDF	B-factors(\AA^2)	Q<0.9
2	TB7	C	1380	23/23	0.92	0.15	-0.10	36,41,45,45	0
2	TB7	A	1380	23/23	0.95	0.14	-0.53	21,30,33,34	0
2	TB7	B	1380	23/23	0.95	0.13	-1.20	29,33,36,37	0

6.5 Other polymers [i](#)

There are no such residues in this entry.