



# Full wwPDB X-ray Structure Validation Report ⓘ

Jan 31, 2016 – 06:27 PM GMT

PDB ID : 1ARZ  
Title : ESCHERICHIA COLI DIHYDRODIPICOLINATE REDUCTASE IN COM-  
PLEX WITH NADH AND 2,6 PYRIDINE DICARBOXYLATE  
Authors : Scapin, G.; Reddy, S.G.; Zheng, R.; Blanchard, J.S.  
Deposited on : 1997-08-08  
Resolution : 2.60 Å(reported)

This is a Full wwPDB X-ray Structure Validation Report for a publicly released PDB entry.  
We welcome your comments at [validation@mail.wwpdb.org](mailto:validation@mail.wwpdb.org)  
A user guide is available at  
<http://wwpdb.org/validation/2016/XrayValidationReportHelp>  
with specific help available everywhere you see the ⓘ symbol.

---

The following versions of software and data (see [references ⓘ](#)) were used in the production of this report:

MolProbity : 4.02b-467  
Mogul : 1.7 (RC4), CSD as536be (2015)  
Xtriage (Phenix) : 1.9-1692  
EDS : rb-20026688  
Percentile statistics : 20151230.v01 (using entries in the PDB archive December 30th 2015)  
Refmac : 5.8.0135  
CCP4 : 6.5.0  
Ideal geometry (proteins) : Engh & Huber (2001)  
Ideal geometry (DNA, RNA) : Parkinson et al. (1996)  
Validation Pipeline (wwPDB-VP) : trunk26865

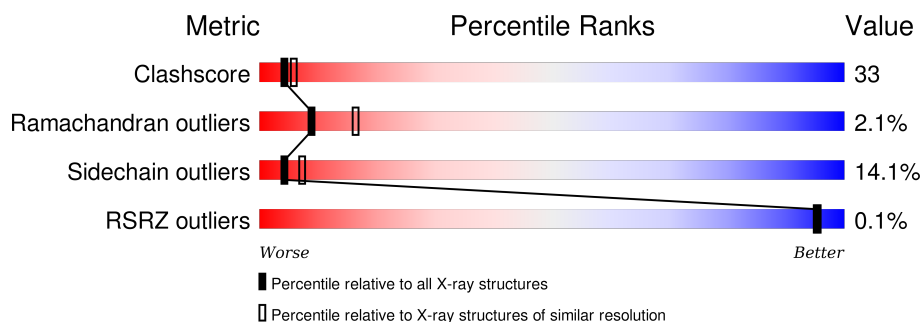
# 1 Overall quality at a glance ⓘ

The following experimental techniques were used to determine the structure:

*X-RAY DIFFRACTION*

The reported resolution of this entry is 2.60 Å.

Percentile scores (ranging between 0-100) for global validation metrics of the entry are shown in the following graphic. The table shows the number of entries on which the scores are based.



Metric	Whole archive (#Entries)	Similar resolution (#Entries, resolution range(Å))
Clashscore	102246	2679 (2.60-2.60)
Ramachandran outliers	100387	2635 (2.60-2.60)
Sidechain outliers	100360	2635 (2.60-2.60)
RSRZ outliers	91569	2334 (2.60-2.60)

The table below summarises the geometric issues observed across the polymeric chains and their fit to the electron density. The red, orange, yellow and green segments on the lower bar indicate the fraction of residues that contain outliers for  $\geq 3$ , 2, 1 and 0 types of geometric quality criteria. A grey segment represents the fraction of residues that are not modelled. The numeric value for each fraction is indicated below the corresponding segment, with a dot representing fractions  $\leq 5\%$ . The upper red bar (where present) indicates the fraction of residues that have poor fit to the electron density. The numeric value is given above the bar.

Mol	Chain	Length	Quality of chain
1	A	273	
1	B	273	
1	C	273	
1	D	273	

The following table lists non-polymeric compounds, carbohydrate monomers and non-standard residues in protein, DNA, RNA chains that are outliers for geometric or electron-density-fit criteria:

Mol	Type	Chain	Res	Chirality	Geometry	Clashes	Electron density
5	PDC	D	303	-	-	X	-

## 2 Entry composition [i](#)

There are 6 unique types of molecules in this entry. The entry contains 8232 atoms, of which 0 are hydrogens and 0 are deuteriums.

In the tables below, the ZeroOcc column contains the number of atoms modelled with zero occupancy, the AltConf column contains the number of residues with at least one atom in alternate conformation and the Trace column contains the number of residues modelled with at most 2 atoms.

- Molecule 1 is a protein called DIHYDRODIPICOLINATE REDUCTASE.

Mol	Chain	Residues	Atoms					ZeroOcc	AltConf	Trace
1	A	270	Total	C	N	O	S	0	0	0
			1939	1207	344	378	10			
1	B	269	Total	C	N	O	S	0	0	0
			1975	1225	356	384	10			
1	C	271	Total	C	N	O	S	0	0	0
			1980	1229	357	384	10			
1	D	271	Total	C	N	O	S	0	0	0
			1984	1232	357	385	10			

- Molecule 2 is PHOSPHATE ION (three-letter code: PO4) (formula: O<sub>4</sub>P).

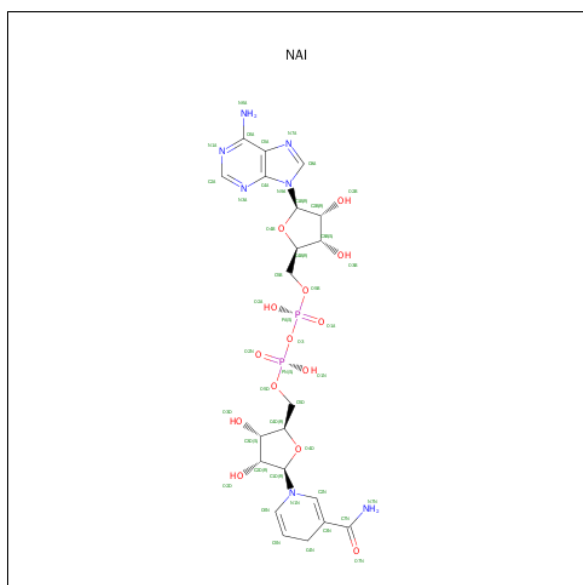


Mol	Chain	Residues	Atoms		ZeroOcc	AltConf
2	A	1	Total	O P	0	0
			5	4 1		

- Molecule 3 is POTASSIUM ION (three-letter code: K) (formula: K).

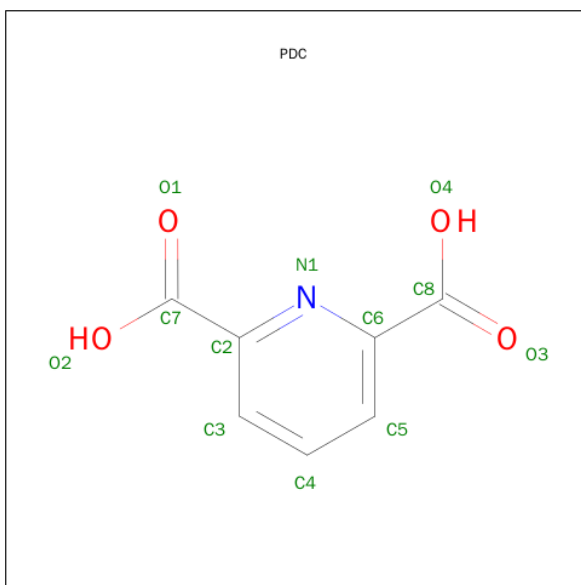
Mol	Chain	Residues	Atoms	ZeroOcc	AltConf
3	B	1	Total K 1 1	0	0
3	D	1	Total K 1 1	0	0

- Molecule 4 is 1,4-DIHYDRONICOTINAMIDE ADENINE DINUCLEOTIDE (three-letter code: NAI) (formula:  $C_{21}H_{29}N_7O_{14}P_2$ ).



Mol	Chain	Residues	Atoms	ZeroOcc	AltConf
4	B	1	Total C N O P 44 21 7 14 2	0	0
4	C	1	Total C N O P 44 21 7 14 2	0	0
4	D	1	Total C N O P 44 21 7 14 2	0	0

- Molecule 5 is PYRIDINE-2,6-DICARBOXYLIC ACID (three-letter code: PDC) (formula:  $C_7H_5NO_4$ ).

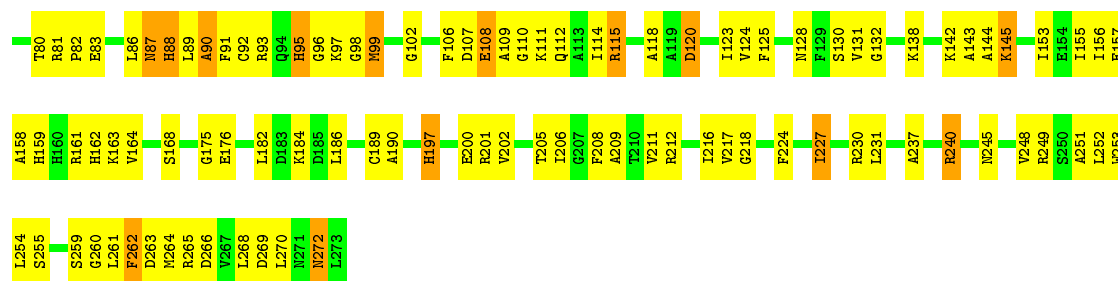


Mol	Chain	Residues	Atoms				ZeroOcc	AltConf
5	B	1	Total	C	N	O	0	0
			12	7	1	4		
5	C	1	Total	C	N	O	0	0
			12	7	1	4		
5	D	1	Total	C	N	O	0	0
			12	7	1	4		

- Molecule 6 is water.

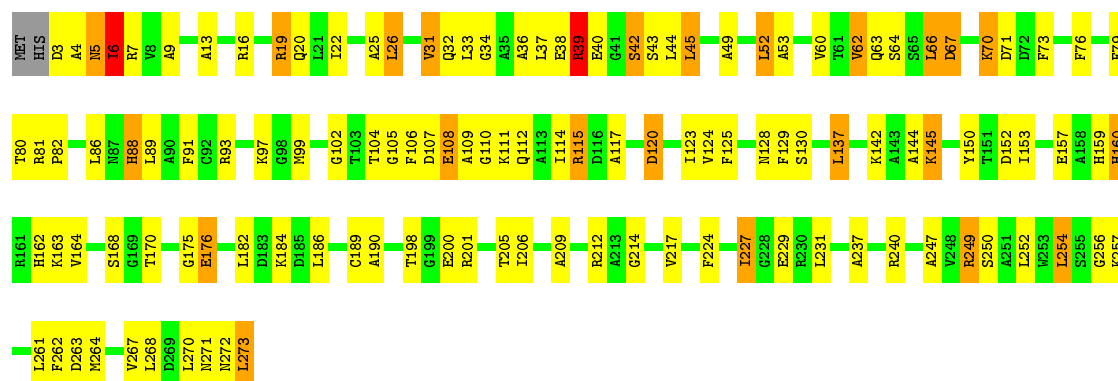
Mol	Chain	Residues	Atoms		ZeroOcc	AltConf
6	A	41	Total	O	0	0
			41	41		
6	B	47	Total	O	0	0
			47	47		
6	C	45	Total	O	0	0
			45	45		
6	D	46	Total	O	0	0
			46	46		





• Molecule 1: DIHYDRODIPICOLINATE REDUCTASE

Chain D: 54% 36% 8% ..





## 4 Data and refinement statistics

Property	Value	Source
Space group	P 21 21 21	Depositor
Cell constants a, b, c, $\alpha$ , $\beta$ , $\gamma$	137.60 Å   123.80 Å   66.60 Å 90.00°   90.00°   90.00°	Depositor
Resolution (Å)	20.00 – 2.60 23.21 – 2.52	Depositor EDS
% Data completeness (in resolution range)	89.9 (20.00-2.60) 85.3 (23.21-2.52)	Depositor EDS
$R_{merge}$	0.04	Depositor
$R_{sym}$	0.08	Depositor
$\langle I/\sigma(I) \rangle$ <sup>1</sup>	1.76 (at 2.53 Å)	Xtriage
Refinement program	X-PLOR 3.1	Depositor
R, $R_{free}$	0.214   ,   0.297 0.221   ,   (Not available)	Depositor DCC
$R_{free}$ test set	No test flags present.	DCC
Wilson B-factor (Å <sup>2</sup> )	38.2	Xtriage
Anisotropy	0.437	Xtriage
Bulk solvent $k_{sol}$ (e/Å <sup>3</sup> ), $B_{sol}$ (Å <sup>2</sup> )	0.20   ,   72.4	EDS
Estimated twinning fraction	No twinning to report.	Xtriage
L-test for twinning <sup>2</sup>	$\langle  L  \rangle = 0.47$ , $\langle L^2 \rangle = 0.30$	Xtriage
Outliers	0 of 33414 reflections	Xtriage
$F_o, F_c$ correlation	0.94	EDS
Total number of atoms	8232	wwPDB-VP
Average B, all atoms (Å <sup>2</sup> )	33.0	wwPDB-VP

Xtriage's analysis on translational NCS is as follows: *The largest off-origin peak in the Patterson function is 3.49% of the height of the origin peak. No significant pseudotranslation is detected.*

<sup>1</sup>Intensities estimated from amplitudes.

<sup>2</sup>Theoretical values of  $\langle |L| \rangle$ ,  $\langle L^2 \rangle$  for acentric reflections are 0.5, 0.375 respectively for untwinned datasets, and 0.333, 0.2 for perfectly twinned datasets.

## 5 Model quality

### 5.1 Standard geometry

Bond lengths and bond angles in the following residue types are not validated in this section: K, NAI, PDC, PO4

The Z score for a bond length (or angle) is the number of standard deviations the observed value is removed from the expected value. A bond length (or angle) with  $|Z| > 5$  is considered an outlier worth inspection. RMSZ is the root-mean-square of all Z scores of the bond lengths (or angles).

Mol	Chain	Bond lengths		Bond angles	
		RMSZ	# Z  >5	RMSZ	# Z  >5
1	A	0.73	0/1965	0.93	1/2658 (0.0%)
1	B	0.71	0/2001	0.92	2/2697 (0.1%)
1	C	0.72	0/2006	0.94	1/2705 (0.0%)
1	D	0.73	0/2010	0.93	4/2710 (0.1%)
All	All	0.73	0/7982	0.93	8/10770 (0.1%)

Chiral center outliers are detected by calculating the chiral volume of a chiral center and verifying if the center is modelled as a planar moiety or with the opposite hand. A planarity outlier is detected by checking planarity of atoms in a peptide group, atoms in a mainchain group or atoms of a sidechain that are expected to be planar.

Mol	Chain	#Chirality outliers	#Planarity outliers
1	A	0	1

There are no bond length outliers.

All (8) bond angle outliers are listed below:

Mol	Chain	Res	Type	Atoms	Z	Observed(°)	Ideal(°)
1	C	52	LEU	CA-CB-CG	6.70	130.71	115.30
1	B	52	LEU	CA-CB-CG	6.03	129.17	115.30
1	D	6	ILE	N-CA-C	5.59	126.09	111.00
1	D	45	LEU	CA-CB-CG	5.56	128.10	115.30
1	D	254	LEU	CA-CB-CG	5.34	127.58	115.30
1	A	72	ASP	N-CA-C	5.27	125.22	111.00
1	D	39	ARG	NE-CZ-NH1	5.26	122.93	120.30
1	B	205	THR	N-CA-C	5.19	125.02	111.00

There are no chirality outliers.

All (1) planarity outliers are listed below:

Mol	Chain	Res	Type	Group
1	A	150	TYR	Sidechain

## 5.2 Too-close contacts ⓘ

In the following table, the Non-H and H(model) columns list the number of non-hydrogen atoms and hydrogen atoms in the chain respectively. The H(added) column lists the number of hydrogen atoms added and optimized by MolProbity. The Clashes column lists the number of clashes within the asymmetric unit, whereas Symm-Clashes lists symmetry related clashes.

Mol	Chain	Non-H	H(model)	H(added)	Clashes	Symm-Clashes
1	A	1939	0	1871	146	0
1	B	1975	0	1943	137	0
1	C	1980	0	1941	140	0
1	D	1984	0	1953	119	0
2	A	5	0	0	0	0
3	B	1	0	0	0	0
3	D	1	0	0	0	0
4	B	44	0	27	6	0
4	C	44	0	27	3	0
4	D	44	0	27	5	0
5	B	12	0	4	1	0
5	C	12	0	3	2	0
5	D	12	0	3	4	0
6	A	41	0	0	1	0
6	B	47	0	0	5	0
6	C	45	0	0	5	0
6	D	46	0	0	7	0
All	All	8232	0	7799	526	0

The all-atom clashscore is defined as the number of clashes found per 1000 atoms (including hydrogen atoms). The all-atom clashscore for this structure is 33.

All (526) close contacts within the same asymmetric unit are listed below, sorted by their clash magnitude.

Atom-1	Atom-2	Interatomic distance (Å)	Clash overlap (Å)
1:C:89:LEU:HA	1:C:99:MET:HE1	1.35	1.05
1:C:89:LEU:HA	1:C:99:MET:CE	1.93	0.99
1:C:45:LEU:HA	1:C:62:VAL:HG22	1.49	0.95
1:C:245:ASN:O	1:C:249:ARG:HD2	1.71	0.89
1:C:102:GLY:O	4:C:301:NAI:H2N	1.72	0.88
1:C:86:LEU:O	1:C:89:LEU:HB3	1.74	0.88

*Continued on next page...*

*Continued from previous page...*

Atom-1	Atom-2	Interatomic distance (Å)	Clash overlap (Å)
1:C:108:GLU:HA	1:C:111:LYS:HD3	1.55	0.88
1:C:153:ILE:HG22	1:C:206:ILE:HG23	1.56	0.87
1:B:108:GLU:HA	1:B:111:LYS:HD3	1.60	0.83
1:D:108:GLU:HA	1:D:111:LYS:HD3	1.60	0.82
1:A:101:ILE:N	1:A:101:ILE:HD12	1.95	0.81
1:C:218:GLY:HA3	6:C:412:HOH:O	1.77	0.81
1:D:102:GLY:O	4:D:302:NAI:H2N	1.82	0.79
1:C:48:ASP:HB3	1:C:51:GLU:HG2	1.62	0.79
1:C:138:LYS:HE2	1:C:272:ASN:HA	1.65	0.79
1:B:86:LEU:O	1:B:89:LEU:HG	1.84	0.78
1:C:67:ASP:HA	1:C:70:LYS:HB3	1.65	0.78
1:D:186:LEU:HD23	1:D:190:ALA:HB2	1.65	0.77
1:D:39:ARG:HG2	1:D:39:ARG:HH11	1.49	0.77
1:B:67:ASP:HA	1:B:70:LYS:HB3	1.64	0.77
1:D:67:ASP:HA	1:D:70:LYS:HB3	1.65	0.77
1:A:201:ARG:HD3	1:C:212:ARG:O	1.83	0.77
1:A:73:PHE:CE1	1:A:97:LYS:HE3	2.19	0.77
1:C:73:PHE:O	1:C:97:LYS:HE2	1.85	0.77
1:A:186:LEU:HD23	1:A:190:ALA:HB2	1.67	0.77
1:B:186:LEU:HD23	1:B:190:ALA:HB2	1.66	0.76
1:B:38:GLU:HG3	1:B:42:SER:OG	1.84	0.76
1:A:45:LEU:HD12	1:A:62:VAL:O	1.85	0.76
1:B:13:ALA:O	1:B:52:LEU:HD11	1.86	0.76
1:B:88:HIS:O	1:B:92:CYS:HB2	1.85	0.76
1:D:7:ARG:HB2	1:D:73:PHE:HA	1.69	0.75
1:D:66:LEU:HB3	1:D:91:PHE:CE2	2.22	0.75
1:C:186:LEU:HD23	1:C:190:ALA:HB2	1.70	0.74
1:C:49:ALA:O	1:C:52:LEU:HB3	1.87	0.74
1:D:249:ARG:HH11	1:D:249:ARG:HG2	1.53	0.74
1:D:49:ALA:O	1:D:52:LEU:HG	1.88	0.72
1:B:273:LEU:HA	6:B:438:HOH:O	1.89	0.72
1:A:129:PHE:O	1:A:246:GLY:HA3	1.90	0.72
1:C:216:ILE:HA	6:C:438:HOH:O	1.88	0.72
1:A:101:ILE:CD1	1:A:123:ILE:HG23	2.20	0.71
1:B:76:PHE:HB2	1:B:92:CYS:SG	2.31	0.70
1:B:142:LYS:HE3	1:B:273:LEU:HG	1.71	0.70
1:A:80:THR:O	1:A:103:THR:HG23	1.92	0.69
1:C:48:ASP:OD2	1:C:57:LYS:HA	1.93	0.68
1:C:251:ALA:HA	1:C:254:LEU:HD12	1.74	0.68
1:A:73:PHE:HE1	1:A:97:LYS:HB3	1.58	0.68
1:C:7:ARG:HB2	1:C:73:PHE:HA	1.76	0.67

*Continued on next page...*

*Continued from previous page...*

Atom-1	Atom-2	Interatomic distance (Å)	Clash overlap (Å)
1:B:93:ARG:HA	1:B:121:ILE:HG21	1.76	0.67
1:A:11:ALA:HB2	1:A:76:PHE:CZ	2.29	0.67
1:B:114:ILE:HG22	1:B:261:LEU:HD11	1.76	0.67
1:B:273:LEU:HD12	1:C:142:LYS:HD2	1.76	0.67
1:A:89:LEU:O	1:A:89:LEU:HD23	1.95	0.67
1:B:19:ARG:HD3	1:B:52:LEU:HD13	1.76	0.67
1:B:7:ARG:HB2	1:B:73:PHE:HA	1.76	0.67
1:A:124:VAL:HG23	1:A:254:LEU:HD21	1.78	0.66
4:D:302:NAI:H4B	6:D:426:HOH:O	1.94	0.66
1:B:76:PHE:CB	1:B:92:CYS:SG	2.83	0.66
1:A:46:GLY:H	1:A:62:VAL:HG13	1.60	0.66
1:A:79:PHE:CE1	1:A:102:GLY:HA3	2.30	0.66
1:D:19:ARG:HB3	1:D:53:ALA:HB2	1.78	0.66
1:C:17:MET:HB2	6:C:407:HOH:O	1.96	0.66
1:C:240:ARG:HD3	6:C:444:HOH:O	1.96	0.66
1:A:82:PRO:O	1:A:85:THR:N	2.29	0.66
1:C:262:PHE:HD1	1:C:262:PHE:N	1.94	0.65
1:C:264:MET:O	1:C:268:LEU:HD12	1.96	0.65
1:B:60:VAL:HG12	1:B:61:THR:H	1.60	0.65
1:D:93:ARG:HD2	1:D:117:ALA:HA	1.79	0.65
1:C:227:ILE:H	1:C:227:ILE:HD13	1.62	0.65
1:C:80:THR:O	4:C:301:NAI:H4D	1.95	0.65
1:C:262:PHE:CD1	1:C:262:PHE:N	2.64	0.65
1:D:99:MET:O	1:D:254:LEU:HD11	1.96	0.65
1:B:247:ALA:O	1:B:250:SER:HB2	1.97	0.64
1:B:44:LEU:HD13	1:B:44:LEU:O	1.96	0.64
1:D:3:ASP:N	1:D:31:VAL:H	1.96	0.64
1:A:79:PHE:CZ	1:A:102:GLY:HA3	2.32	0.64
1:B:114:ILE:HG22	1:B:261:LEU:CD1	2.28	0.64
1:C:128:ASN:HD22	1:C:130:SER:H	1.45	0.64
1:A:47:SER:O	1:A:62:VAL:HG12	1.98	0.63
1:C:93:ARG:O	1:C:96:GLY:N	2.31	0.63
1:B:120:ASP:O	1:B:259:SER:HB3	1.98	0.63
1:A:89:LEU:HD21	1:A:117:ALA:CB	2.27	0.63
1:A:264:MET:O	1:A:268:LEU:HB2	1.99	0.62
1:C:138:LYS:HE2	1:C:272:ASN:H	1.64	0.62
1:A:91:PHE:HE1	1:A:95:HIS:CD2	2.17	0.62
1:C:265:ARG:HG2	1:C:270:LEU:HD12	1.81	0.62
1:D:128:ASN:HD22	1:D:130:SER:H	1.48	0.62
1:A:131:VAL:HG13	1:A:268:LEU:HD21	1.81	0.62
1:B:152:ASP:HA	6:B:443:HOH:O	1.99	0.62

*Continued on next page...*

*Continued from previous page...*

Atom-1	Atom-2	Interatomic distance (Å)	Clash overlap (Å)
1:A:101:ILE:HD11	1:A:123:ILE:HG23	1.80	0.61
1:A:189:CYS:HB2	1:A:205:THR:HA	1.82	0.61
1:B:227:ILE:O	1:B:227:ILE:HG12	1.99	0.61
1:A:126:ALA:HB3	1:A:129:PHE:CE1	2.36	0.61
1:B:153:ILE:CG2	1:B:206:ILE:HD13	2.30	0.61
1:D:36:ALA:C	1:D:37:LEU:HD12	2.21	0.61
1:A:46:GLY:N	1:A:62:VAL:HG13	2.15	0.61
1:B:112:GLN:HA	1:B:112:GLN:OE1	1.99	0.61
1:A:227:ILE:H	1:A:227:ILE:HD13	1.65	0.60
1:A:265:ARG:NH1	1:A:271:ASN:HD21	2.00	0.60
1:B:48:ASP:HA	1:B:60:VAL:O	2.01	0.60
1:B:227:ILE:H	1:B:227:ILE:HD13	1.67	0.60
1:D:79:PHE:CZ	1:D:102:GLY:HA3	2.37	0.60
1:B:194:ARG:HH22	1:B:201:ARG:NH1	2.00	0.60
1:D:89:LEU:HD11	1:D:117:ALA:CB	2.31	0.60
1:D:227:ILE:HD13	1:D:227:ILE:H	1.66	0.60
1:B:112:GLN:O	1:B:115:ARG:HB3	2.02	0.60
1:B:28:LEU:HD12	1:B:248:VAL:HG11	1.84	0.59
1:B:36:ALA:C	1:B:37:LEU:HD12	2.22	0.59
1:C:227:ILE:HG12	1:C:227:ILE:O	2.02	0.59
1:B:118:ALA:HB1	1:B:261:LEU:N	2.17	0.59
1:B:142:LYS:HE3	1:B:273:LEU:CG	2.32	0.59
1:B:60:VAL:HG12	1:B:61:THR:N	2.18	0.59
1:C:138:LYS:HE2	1:C:272:ASN:CA	2.32	0.58
1:A:153:ILE:N	1:A:201:ARG:HH21	2.01	0.58
1:A:273:LEU:HD22	1:D:142:LYS:HD2	1.86	0.58
1:A:101:ILE:N	1:A:101:ILE:CD1	2.65	0.58
1:D:112:GLN:HA	1:D:112:GLN:OE1	2.02	0.58
1:A:91:PHE:CE1	1:A:95:HIS:CD2	2.91	0.58
1:A:78:ASP:OD2	1:A:85:THR:HG23	2.03	0.58
1:B:66:LEU:HB3	1:B:91:PHE:CZ	2.39	0.58
1:D:3:ASP:N	1:D:31:VAL:N	2.51	0.58
1:A:76:PHE:CZ	1:A:88:HIS:CD2	2.91	0.58
1:A:89:LEU:HD21	1:A:117:ALA:HB2	1.86	0.58
1:D:227:ILE:HG12	1:D:227:ILE:O	2.04	0.58
1:B:162:HIS:HA	1:D:200:GLU:OE1	2.04	0.58
1:C:112:GLN:HA	1:C:112:GLN:OE1	2.03	0.57
1:A:101:ILE:HD13	1:A:123:ILE:HG23	1.84	0.57
1:D:89:LEU:HD12	1:D:99:MET:HE1	1.85	0.57
1:A:89:LEU:HD23	1:A:89:LEU:C	2.25	0.57
1:C:74:ASP:O	1:C:97:LYS:HD3	2.04	0.57

*Continued on next page...*

*Continued from previous page...*

Atom-1	Atom-2	Interatomic distance (Å)	Clash overlap (Å)
1:C:251:ALA:CA	1:C:254:LEU:HD12	2.35	0.57
1:B:120:ASP:C	1:B:259:SER:HB3	2.25	0.57
1:C:66:LEU:HB3	1:C:91:PHE:CE1	2.40	0.57
1:C:261:LEU:HD23	1:C:262:PHE:N	2.19	0.57
1:B:76:PHE:HB3	1:B:99:MET:HG3	1.87	0.57
1:A:153:ILE:H	1:A:201:ARG:NH2	2.03	0.57
1:A:19:ARG:O	1:A:22:ILE:HB	2.05	0.57
1:D:39:ARG:CG	1:D:39:ARG:HH11	2.16	0.57
1:C:66:LEU:HB3	1:C:91:PHE:CZ	2.40	0.56
1:A:9:ALA:HB3	1:A:76:PHE:HA	1.87	0.56
1:A:8:VAL:HG22	1:A:33:LEU:HA	1.88	0.56
1:D:26:LEU:CD1	1:D:33:LEU:HB2	2.35	0.56
1:C:88:HIS:O	1:C:92:CYS:SG	2.63	0.56
1:B:142:LYS:O	1:B:145:LYS:HB3	2.05	0.56
1:A:22:ILE:O	1:A:25:ALA:HB3	2.05	0.56
1:D:102:GLY:O	4:D:302:NAI:C2N	2.51	0.56
1:A:83:GLU:HA	1:A:86:LEU:HD23	1.86	0.56
1:B:106:PHE:CD2	1:B:125:PHE:HZ	2.24	0.56
1:B:128:ASN:HD22	1:B:130:SER:H	1.53	0.56
1:A:261:LEU:HD23	1:A:262:PHE:N	2.21	0.56
1:D:76:PHE:HB3	1:D:99:MET:HG3	1.88	0.55
1:D:5:ASN:N	1:D:5:ASN:HD22	2.05	0.55
1:C:89:LEU:HA	1:C:99:MET:HE2	1.87	0.55
1:A:78:ASP:OD2	1:A:85:THR:HA	2.06	0.55
1:B:89:LEU:HA	1:B:99:MET:HE1	1.88	0.55
1:C:261:LEU:C	1:C:262:PHE:CD1	2.80	0.55
1:D:160:HIS:CE1	6:D:413:HOH:O	2.60	0.55
1:B:102:GLY:O	4:B:302:NAI:H2N	2.07	0.55
1:D:88:HIS:O	1:D:91:PHE:HB3	2.05	0.55
1:D:66:LEU:HB3	1:D:91:PHE:CZ	2.42	0.55
1:C:261:LEU:C	1:C:262:PHE:HD1	2.09	0.55
1:B:201:ARG:HG3	1:B:201:ARG:HH11	1.71	0.55
1:C:162:HIS:HE1	6:C:415:HOH:O	1.90	0.55
1:C:112:GLN:O	1:C:115:ARG:HB3	2.06	0.54
1:B:153:ILE:HG21	1:B:206:ILE:HD13	1.89	0.54
1:B:36:ALA:C	1:B:62:VAL:HG13	2.28	0.54
1:A:241:MET:CE	1:A:245:ASN:HD21	2.21	0.54
1:D:249:ARG:NH1	1:D:249:ARG:HG2	2.19	0.54
1:A:79:PHE:CD1	1:A:102:GLY:HA3	2.43	0.54
1:A:65:SER:HB3	1:A:68:ALA:HB2	1.90	0.54
1:D:186:LEU:CD2	1:D:190:ALA:HB2	2.38	0.54

*Continued on next page...*

*Continued from previous page...*

Atom-1	Atom-2	Interatomic distance (Å)	Clash overlap (Å)
1:A:73:PHE:CE1	1:A:97:LYS:HB3	2.42	0.54
1:A:268:LEU:HB3	1:A:270:LEU:HG	1.88	0.54
1:C:265:ARG:NH1	1:C:265:ARG:HB2	2.22	0.53
1:C:142:LYS:O	1:C:145:LYS:HB3	2.07	0.53
1:D:13:ALA:HB1	1:D:22:ILE:HD11	1.91	0.53
1:A:175:GLY:HA3	1:A:186:LEU:HD11	1.90	0.53
1:C:128:ASN:ND2	1:C:130:SER:H	2.06	0.53
1:C:36:ALA:C	1:C:37:LEU:HD12	2.29	0.53
1:C:13:ALA:HB1	1:C:22:ILE:HD11	1.91	0.53
1:D:104:THR:HG21	5:D:303:PDC:C7	2.39	0.53
1:C:45:LEU:HA	1:C:62:VAL:CG2	2.32	0.53
1:B:252:LEU:HD23	1:B:253:TRP:N	2.23	0.53
1:D:81:ARG:HB3	1:D:82:PRO:HD2	1.90	0.53
1:B:88:HIS:N	1:B:88:HIS:CD2	2.73	0.53
1:C:264:MET:CE	1:C:268:LEU:HD11	2.39	0.53
1:D:129:PHE:O	1:D:264:MET:HE2	2.08	0.53
1:B:194:ARG:NH2	1:B:201:ARG:NH1	2.55	0.53
1:C:163:LYS:NZ	5:C:302:PDC:N1	2.56	0.53
1:B:76:PHE:CB	1:B:92:CYS:HG	2.21	0.53
1:B:186:LEU:CD2	1:B:190:ALA:HB2	2.38	0.53
1:A:245:ASN:N	1:A:245:ASN:HD22	2.06	0.53
1:C:251:ALA:HA	1:C:254:LEU:CD1	2.38	0.53
1:C:253:TRP:HZ3	1:C:262:PHE:CD2	2.27	0.53
1:D:142:LYS:O	1:D:145:LYS:HB3	2.09	0.53
1:D:272:ASN:HB2	6:D:423:HOH:O	2.09	0.53
1:A:75:VAL:HG23	1:A:98:GLY:O	2.08	0.53
1:C:253:TRP:CZ3	1:C:262:PHE:CD2	2.97	0.52
1:A:125:PHE:C	1:A:125:PHE:CD1	2.80	0.52
1:D:19:ARG:CB	1:D:53:ALA:HB2	2.39	0.52
1:D:170:THR:N	5:D:303:PDC:O1	2.42	0.52
1:B:81:ARG:HB3	1:B:82:PRO:HD2	1.91	0.52
1:A:227:ILE:O	1:A:227:ILE:HG12	2.09	0.52
1:C:189:CYS:HB2	1:C:205:THR:HA	1.91	0.52
1:C:201:ARG:HH11	1:C:201:ARG:HG2	1.73	0.52
1:B:115:ARG:HA	1:B:261:LEU:HD12	1.92	0.52
1:A:65:SER:HB3	1:A:68:ALA:CB	2.39	0.52
1:A:100:VAL:HG12	1:A:100:VAL:O	2.08	0.52
1:A:243:PHE:N	1:A:243:PHE:CD1	2.78	0.52
1:C:106:PHE:CD2	1:C:125:PHE:HZ	2.28	0.52
1:C:138:LYS:HE2	1:C:272:ASN:N	2.24	0.52
1:C:186:LEU:CD2	1:C:190:ALA:HB2	2.38	0.52

*Continued on next page...*



*Continued from previous page...*

Atom-1	Atom-2	Interatomic distance (Å)	Clash overlap (Å)
1:A:273:LEU:HD22	1:D:142:LYS:CD	2.39	0.52
1:A:209:ALA:HB1	1:C:209:ALA:HB1	1.92	0.52
1:B:38:GLU:OE1	4:B:302:NAI:H1B	2.10	0.52
1:B:26:LEU:HD21	1:B:58:THR:HG21	1.91	0.52
1:B:194:ARG:NH2	1:B:201:ARG:HH11	2.08	0.52
1:A:142:LYS:O	1:A:145:LYS:HB3	2.10	0.52
1:A:186:LEU:CD2	1:A:190:ALA:HB2	2.38	0.52
1:A:79:PHE:CE2	1:A:102:GLY:HA3	2.45	0.52
1:D:112:GLN:O	1:D:115:ARG:HB3	2.10	0.52
1:C:95:HIS:N	1:C:95:HIS:ND1	2.56	0.51
1:B:67:ASP:O	1:B:70:LYS:HG2	2.11	0.51
1:D:19:ARG:HB3	1:D:53:ALA:CB	2.41	0.51
1:A:118:ALA:O	1:A:121:ILE:O	2.28	0.51
1:B:212:ARG:O	1:D:201:ARG:HD2	2.11	0.51
1:B:50:GLY:HA3	1:B:58:THR:HG23	1.93	0.51
1:B:88:HIS:H	1:B:88:HIS:CD2	2.27	0.51
1:A:128:ASN:O	1:A:134:ASN:ND2	2.44	0.51
1:C:265:ARG:O	1:C:269:ASP:N	2.43	0.51
1:D:106:PHE:CD2	1:D:125:PHE:HZ	2.28	0.51
1:A:78:ASP:CG	1:A:85:THR:HG23	2.31	0.51
1:A:119:ALA:O	1:A:259:SER:HB2	2.10	0.51
1:B:209:ALA:HB1	1:D:209:ALA:HB1	1.93	0.50
1:A:124:VAL:HG22	1:A:262:PHE:HB2	1.93	0.50
1:C:89:LEU:HD22	1:C:99:MET:CE	2.42	0.50
1:C:153:ILE:O	1:C:206:ILE:HA	2.11	0.50
1:D:7:ARG:CB	1:D:73:PHE:HA	2.40	0.50
1:C:21:LEU:O	1:C:24:ALA:HB3	2.12	0.50
1:A:144:ALA:O	1:A:182:LEU:HD21	2.12	0.50
1:C:73:PHE:CE1	1:C:97:LYS:HD2	2.47	0.50
1:A:160:HIS:HB2	1:A:214:GLY:O	2.11	0.50
1:B:106:PHE:HD2	1:B:125:PHE:HZ	1.58	0.50
1:B:46:GLY:O	1:B:61:THR:HB	2.11	0.50
1:D:152:ASP:HA	1:D:201:ARG:HH21	1.76	0.50
1:C:5:ASN:HB2	1:C:30:GLY:O	2.12	0.50
1:A:265:ARG:HH11	1:A:271:ASN:HD21	1.60	0.49
1:A:123:ILE:HG22	1:A:124:VAL:N	2.27	0.49
1:A:153:ILE:HG12	1:A:224:PHE:CD1	2.48	0.49
1:D:9:ALA:HB2	1:D:73:PHE:CD2	2.47	0.49
1:B:106:PHE:CD2	1:B:125:PHE:CZ	3.01	0.49
1:B:125:PHE:CB	1:B:261:LEU:HD21	2.41	0.49
1:A:109:ALA:O	1:A:113:ALA:HB2	2.12	0.49

*Continued on next page...*

*Continued from previous page...*

Atom-1	Atom-2	Interatomic distance (Å)	Clash overlap (Å)
1:A:86:LEU:O	1:A:89:LEU:HB3	2.13	0.49
1:C:75:VAL:HG13	1:C:98:GLY:O	2.11	0.49
1:C:73:PHE:CD1	1:C:97:LYS:HD2	2.47	0.49
1:B:153:ILE:HG12	1:B:224:PHE:CD1	2.48	0.49
1:B:95:HIS:ND1	1:B:95:HIS:N	2.60	0.49
1:B:252:LEU:C	1:B:252:LEU:HD23	2.32	0.49
1:B:217:VAL:HB	1:B:237:ALA:O	2.12	0.49
1:D:86:LEU:O	1:D:89:LEU:HB3	2.13	0.49
1:D:263:ASP:HB2	6:D:416:HOH:O	2.12	0.49
1:B:175:GLY:C	1:B:186:LEU:HD12	2.33	0.49
1:A:131:VAL:O	1:A:132:GLY:C	2.51	0.49
1:A:102:GLY:O	1:A:104:THR:HG22	2.13	0.48
1:B:153:ILE:H	1:B:201:ARG:HH21	1.61	0.48
1:B:83:GLU:O	1:B:86:LEU:HB2	2.13	0.48
1:D:39:ARG:O	1:D:42:SER:OG	2.32	0.48
1:B:47:SER:O	1:B:61:THR:HA	2.13	0.48
1:D:150:TYR:HE2	6:D:432:HOH:O	1.96	0.48
1:B:16:ARG:O	1:B:20:GLN:HG2	2.12	0.48
6:B:409:HOH:O	1:C:230:ARG:HG2	2.13	0.48
1:A:162:HIS:HD2	1:C:200:GLU:OE1	1.97	0.48
1:D:249:ARG:HH11	1:D:249:ARG:CG	2.25	0.48
1:D:36:ALA:CB	1:D:62:VAL:HG23	2.44	0.48
1:C:82:PRO:HA	1:C:106:PHE:CE1	2.49	0.48
1:B:201:ARG:HD2	1:D:212:ARG:O	2.13	0.48
1:A:101:ILE:H	1:A:101:ILE:HD12	1.74	0.48
1:B:188:ASP:HA	6:B:428:HOH:O	2.13	0.48
1:A:242:THR:HG23	1:D:229:GLU:CD	2.34	0.48
1:B:201:ARG:NH2	1:B:205:THR:O	2.46	0.48
1:C:87:ASN:O	1:C:88:HIS:C	2.52	0.48
1:A:153:ILE:H	1:A:201:ARG:HH21	1.58	0.48
1:A:48:ASP:OD1	1:A:58:THR:HB	2.14	0.48
1:A:175:GLY:C	1:A:186:LEU:HD12	2.34	0.47
1:B:125:PHE:N	1:B:262:PHE:O	2.47	0.47
1:A:48:ASP:O	1:A:50:GLY:N	2.46	0.47
1:C:264:MET:HE2	1:C:268:LEU:HD11	1.97	0.47
1:A:10:ILE:HD13	1:A:22:ILE:HA	1.96	0.47
1:C:89:LEU:CD2	1:C:99:MET:HE1	2.45	0.47
1:C:175:GLY:C	1:C:186:LEU:HD12	2.35	0.47
1:B:7:ARG:CB	1:B:73:PHE:HA	2.42	0.47
1:D:128:ASN:ND2	1:D:130:SER:H	2.10	0.47
1:C:76:PHE:CZ	1:C:88:HIS:CD2	3.02	0.47

*Continued on next page...*

*Continued from previous page...*

Atom-1	Atom-2	Interatomic distance (Å)	Clash overlap (Å)
1:B:107:ASP:OD1	1:B:109:ALA:HB3	2.14	0.47
1:C:44:LEU:HD23	1:C:44:LEU:H	1.79	0.47
1:C:90:ALA:O	1:C:93:ARG:HG3	2.15	0.47
1:C:153:ILE:HG12	1:C:224:PHE:CD1	2.49	0.47
1:A:123:ILE:CG2	1:A:124:VAL:N	2.77	0.47
1:C:270:LEU:O	1:C:272:ASN:N	2.47	0.47
1:B:273:LEU:HD22	6:B:438:HOH:O	2.14	0.47
1:A:243:PHE:H	1:A:243:PHE:HD1	1.61	0.47
1:B:20:GLN:NE2	1:B:241:MET:CE	2.78	0.47
1:B:266:ASP:HA	1:B:271:ASN:ND2	2.30	0.47
1:A:140:LEU:HD12	1:A:233:ILE:HD12	1.97	0.47
1:A:38:GLU:HG3	1:A:39:ARG:N	2.30	0.47
1:B:125:PHE:HB3	1:B:261:LEU:HD21	1.96	0.47
1:D:152:ASP:CG	1:D:201:ARG:HE	2.17	0.47
1:B:144:ALA:O	1:B:182:LEU:HD21	2.14	0.47
1:B:15:GLY:HA2	4:B:302:NAI:O1A	2.15	0.47
1:A:65:SER:O	1:A:69:VAL:HG22	2.15	0.47
1:A:100:VAL:HG11	1:A:247:ALA:HB1	1.97	0.47
1:D:105:GLY:HA3	6:D:441:HOH:O	2.15	0.47
1:C:83:GLU:O	1:C:86:LEU:HB2	2.16	0.46
1:C:118:ALA:O	1:C:260:GLY:N	2.48	0.46
1:C:107:ASP:OD1	1:C:109:ALA:HB3	2.14	0.46
1:B:89:LEU:O	1:B:92:CYS:N	2.48	0.46
1:D:175:GLY:HA3	1:D:186:LEU:HD11	1.96	0.46
1:D:7:ARG:HG3	1:D:7:ARG:HH11	1.80	0.46
1:A:18:GLY:O	1:A:22:ILE:HD12	2.14	0.46
1:A:6:ILE:O	1:A:32:GLN:N	2.47	0.46
1:C:90:ALA:O	1:C:93:ARG:HB2	2.15	0.46
1:A:9:ALA:HB2	1:A:73:PHE:CD2	2.50	0.46
1:C:42:SER:C	1:C:44:LEU:H	2.18	0.46
1:A:7:ARG:HB3	1:A:34:GLY:HA3	1.98	0.46
1:A:160:HIS:HA	1:A:213:ALA:O	2.15	0.46
1:C:16:ARG:O	1:C:20:GLN:HG2	2.13	0.46
1:B:39:ARG:O	1:B:40:GLU:C	2.54	0.46
1:D:107:ASP:OD1	1:D:109:ALA:HB3	2.16	0.46
1:A:115:ARG:O	1:A:118:ALA:HB3	2.16	0.46
1:C:175:GLY:HA3	1:C:186:LEU:HD11	1.98	0.46
1:C:144:ALA:O	1:C:182:LEU:HD21	2.16	0.46
1:A:250:SER:O	1:A:253:TRP:HB3	2.16	0.46
1:D:93:ARG:HG3	1:D:120:ASP:OD1	2.16	0.46
1:C:44:LEU:HD23	1:C:44:LEU:N	2.31	0.46

*Continued on next page...*

*Continued from previous page...*

Atom-1	Atom-2	Interatomic distance (Å)	Clash overlap (Å)
1:D:175:GLY:C	1:D:186:LEU:HD12	2.36	0.46
1:A:7:ARG:HB2	1:A:73:PHE:HA	1.97	0.46
1:B:196:GLY:O	1:B:198:THR:HG23	2.16	0.46
1:A:241:MET:HE2	1:A:245:ASN:HD21	1.81	0.46
1:C:9:ALA:HB2	1:C:73:PHE:CG	2.51	0.46
1:B:118:ALA:CB	1:B:261:LEU:HB2	2.46	0.45
1:A:33:LEU:O	1:A:60:VAL:HG21	2.16	0.45
1:C:131:VAL:O	1:C:132:GLY:C	2.54	0.45
1:C:45:LEU:HD12	1:C:63:GLN:HA	1.98	0.45
1:D:36:ALA:O	1:D:37:LEU:HD12	2.16	0.45
1:A:153:ILE:HA	1:A:223:MET:O	2.16	0.45
1:B:80:THR:O	4:B:302:NAI:H4D	2.17	0.45
1:A:85:THR:OG1	1:A:103:THR:HG21	2.17	0.45
1:D:163:LYS:NZ	5:D:303:PDC:O2	2.47	0.45
1:B:20:GLN:HG3	1:B:240:ARG:HB3	1.98	0.45
1:A:217:VAL:HB	1:A:237:ALA:O	2.17	0.45
1:B:9:ALA:HB3	1:B:76:PHE:HA	1.97	0.45
1:B:20:GLN:NE2	1:B:241:MET:HE2	2.31	0.45
1:C:89:LEU:O	1:C:93:ARG:HG3	2.17	0.45
1:C:92:CYS:HB2	1:C:99:MET:HE2	1.98	0.45
1:C:61:THR:O	1:C:63:GLN:HG2	2.17	0.45
1:B:89:LEU:HB2	1:B:90:ALA:H	1.65	0.45
1:A:18:GLY:O	1:A:21:LEU:HB2	2.16	0.45
1:D:144:ALA:O	1:D:182:LEU:HD21	2.17	0.45
1:C:87:ASN:C	1:C:89:LEU:N	2.68	0.45
1:C:48:ASP:HB3	1:C:51:GLU:CG	2.42	0.45
1:D:176:GLU:N	1:D:186:LEU:HD12	2.32	0.45
1:B:13:ALA:HB1	1:B:22:ILE:HD11	1.98	0.45
1:A:28:LEU:HG	1:A:248:VAL:HG12	1.99	0.45
1:C:201:ARG:NH1	1:C:205:THR:OG1	2.49	0.45
1:D:206:ILE:N	1:D:206:ILE:HD12	2.31	0.45
1:D:25:ALA:O	1:D:31:VAL:HG12	2.17	0.45
1:A:24:ALA:HB2	1:A:241:MET:HE3	1.98	0.45
1:D:106:PHE:HD2	1:D:125:PHE:HZ	1.64	0.45
1:B:76:PHE:HB3	1:B:92:CYS:SG	2.57	0.45
1:B:261:LEU:O	1:B:262:PHE:CD1	2.70	0.45
1:C:201:ARG:NH1	1:C:201:ARG:HG2	2.31	0.45
1:A:37:LEU:HD21	1:A:66:LEU:HD13	1.99	0.45
1:B:197:HIS:HA	1:D:164:VAL:O	2.17	0.45
1:B:118:ALA:HB2	1:B:261:LEU:HB2	1.99	0.45
1:C:163:LYS:NZ	5:C:302:PDC:O2	2.47	0.45

*Continued on next page...*

*Continued from previous page...*

Atom-1	Atom-2	Interatomic distance (Å)	Clash overlap (Å)
1:D:153:ILE:HG12	1:D:224:PHE:CD1	2.51	0.45
1:B:175:GLY:HA3	1:B:186:LEU:HD11	1.98	0.44
1:A:33:LEU:HD21	1:A:35:ALA:O	2.16	0.44
1:D:106:PHE:CD2	1:D:125:PHE:CZ	3.05	0.44
1:C:120:ASP:C	1:C:259:SER:HB2	2.37	0.44
1:C:81:ARG:HB3	1:C:82:PRO:HD2	1.98	0.44
4:D:302:NAI:H2D	4:D:302:NAI:H6N	1.64	0.44
1:A:97:LYS:HD2	1:A:97:LYS:HA	1.76	0.44
1:D:264:MET:HE1	1:D:268:LEU:HD21	1.98	0.44
1:D:247:ALA:O	1:D:250:SER:HB2	2.17	0.44
1:D:45:LEU:HD12	1:D:63:GLN:HA	2.00	0.44
1:C:248:VAL:O	1:C:251:ALA:HB3	2.16	0.44
1:D:97:LYS:HA	6:D:428:HOH:O	2.16	0.44
1:A:171:ALA:O	1:A:174:MET:HB2	2.17	0.44
4:B:302:NAI:H2B	4:B:302:NAI:H8A	1.64	0.44
1:A:110:GLY:O	1:A:113:ALA:HB3	2.18	0.44
1:C:89:LEU:HD22	1:C:99:MET:HE1	1.99	0.44
1:A:118:ALA:HA	1:A:123:ILE:HD12	2.00	0.44
1:B:264:MET:HE3	1:B:268:LEU:HD11	1.99	0.44
1:A:40:GLU:HG3	1:A:41:GLY:N	2.32	0.44
1:D:82:PRO:HA	1:D:106:PHE:CE1	2.53	0.44
1:A:199:GLY:C	1:C:164:VAL:HG12	2.38	0.44
1:C:89:LEU:CA	1:C:99:MET:HE1	2.26	0.44
1:A:201:ARG:HB3	1:C:161:ARG:HB2	1.99	0.44
1:C:158:ALA:HA	1:C:211:VAL:O	2.18	0.44
1:D:40:GLU:CD	1:D:40:GLU:N	2.70	0.44
1:C:106:PHE:CD2	1:C:125:PHE:CZ	3.06	0.44
1:D:42:SER:C	1:D:44:LEU:H	2.22	0.44
1:B:44:LEU:HD11	1:B:47:SER:HB2	2.00	0.44
1:A:18:GLY:O	1:A:19:ARG:C	2.56	0.44
1:C:17:MET:HB2	4:C:301:NAI:O2N	2.17	0.43
1:D:38:GLU:HG3	1:D:42:SER:OG	2.17	0.43
1:D:31:VAL:HG23	1:D:252:LEU:HD11	1.99	0.43
1:C:67:ASP:O	1:C:70:LYS:HG2	2.17	0.43
1:D:159:HIS:CE1	1:D:168:SER:HB3	2.53	0.43
1:B:38:GLU:HG3	1:B:42:SER:CB	2.48	0.43
1:D:4:ALA:HB1	1:D:5:ASN:HD22	1.83	0.43
1:D:163:LYS:NZ	5:D:303:PDC:N1	2.65	0.43
1:C:202:VAL:O	1:C:205:THR:HG23	2.18	0.43
1:A:144:ALA:O	1:A:148:GLY:HA3	2.18	0.43
1:B:137:LEU:HD12	1:B:137:LEU:HA	1.67	0.43

*Continued on next page...*

*Continued from previous page...*

Atom-1	Atom-2	Interatomic distance (Å)	Clash overlap (Å)
1:B:60:VAL:CG1	1:B:61:THR:H	2.30	0.43
1:A:24:ALA:HB1	1:A:248:VAL:HG21	2.01	0.43
1:C:159:HIS:CE1	1:C:168:SER:HB3	2.53	0.43
1:A:252:LEU:O	1:A:252:LEU:HD12	2.18	0.43
1:C:86:LEU:O	1:C:89:LEU:CB	2.55	0.43
1:C:7:ARG:CB	1:C:73:PHE:HA	2.47	0.43
1:D:9:ALA:HB2	1:D:73:PHE:CG	2.53	0.43
1:D:52:LEU:H	1:D:52:LEU:HD23	1.83	0.43
1:B:48:ASP:O	1:B:50:GLY:N	2.52	0.43
1:A:10:ILE:HD11	1:A:25:ALA:HB2	2.00	0.43
1:B:7:ARG:HG3	1:B:7:ARG:HH11	1.83	0.43
1:D:264:MET:O	1:D:268:LEU:HD23	2.18	0.43
1:D:153:ILE:H	1:D:201:ARG:NH2	2.16	0.43
1:B:122:ALA:O	1:B:254:LEU:HD11	2.18	0.43
1:C:11:ALA:HB2	1:C:76:PHE:CZ	2.54	0.43
1:D:80:THR:O	4:D:302:NAI:H4D	2.19	0.43
1:C:138:LYS:CE	1:C:272:ASN:H	2.32	0.43
1:B:273:LEU:CD1	1:C:142:LYS:HD2	2.47	0.43
1:C:7:ARG:HA	1:C:32:GLN:O	2.19	0.42
1:A:89:LEU:HD21	1:A:117:ALA:HB1	2.01	0.42
1:B:129:PHE:HE2	1:B:250:SER:HG	1.64	0.42
1:D:270:LEU:O	1:D:272:ASN:N	2.52	0.42
1:D:16:ARG:H	1:D:16:ARG:HG2	1.61	0.42
1:D:42:SER:O	1:D:45:LEU:HD23	2.20	0.42
1:B:120:ASP:C	1:B:259:SER:CB	2.87	0.42
1:A:83:GLU:CA	1:A:86:LEU:HD23	2.48	0.42
1:C:16:ARG:H	1:C:16:ARG:HG2	1.67	0.42
1:C:155:ILE:O	1:C:208:PHE:HA	2.19	0.42
1:B:163:LYS:NZ	5:B:303:PDC:N1	2.67	0.42
1:B:77:ILE:HG22	1:B:77:ILE:O	2.17	0.42
1:B:131:VAL:O	1:B:132:GLY:C	2.57	0.42
1:D:42:SER:O	1:D:45:LEU:CD2	2.67	0.42
1:A:82:PRO:O	1:A:83:GLU:C	2.57	0.42
1:C:114:ILE:H	1:C:114:ILE:HD12	1.85	0.42
1:A:241:MET:O	1:A:244:ALA:N	2.53	0.42
1:D:123:ILE:HG22	1:D:124:VAL:N	2.34	0.42
1:B:92:CYS:O	1:B:97:LYS:O	2.37	0.42
1:A:160:HIS:CB	1:A:214:GLY:O	2.67	0.42
1:A:65:SER:CB	1:A:68:ALA:HB2	2.50	0.42
1:B:48:ASP:C	1:B:50:GLY:N	2.72	0.42
1:D:160:HIS:HB2	1:D:214:GLY:O	2.20	0.42

*Continued on next page...*

*Continued from previous page...*

Atom-1	Atom-2	Interatomic distance (Å)	Clash overlap (Å)
1:B:158:ALA:HA	1:B:211:VAL:O	2.20	0.42
1:D:33:LEU:O	1:D:60:VAL:HG21	2.20	0.41
1:D:45:LEU:HD11	1:D:64:SER:HB3	2.02	0.41
1:D:110:GLY:O	1:D:114:ILE:HD12	2.21	0.41
1:A:254:LEU:O	1:A:256:GLY:N	2.53	0.41
1:B:91:PHE:C	1:B:93:ARG:H	2.23	0.41
1:D:19:ARG:HA	1:D:53:ALA:CB	2.50	0.41
1:D:5:ASN:N	1:D:5:ASN:ND2	2.67	0.41
1:A:28:LEU:HD13	1:A:29:GLU:O	2.21	0.41
1:A:124:VAL:CG2	1:A:254:LEU:HD21	2.47	0.41
1:D:67:ASP:O	1:D:70:LYS:HG2	2.20	0.41
1:A:201:ARG:NH2	1:A:205:THR:O	2.52	0.41
1:B:20:GLN:HE21	1:B:241:MET:HE1	1.85	0.41
1:A:57:LYS:O	1:A:58:THR:O	2.38	0.41
1:D:189:CYS:HB2	1:D:205:THR:HA	2.03	0.41
1:A:130:SER:OG	1:D:229:GLU:OE1	2.37	0.41
1:A:212:ARG:HA	1:A:212:ARG:HD3	1.87	0.41
1:C:87:ASN:O	1:C:90:ALA:N	2.53	0.41
1:A:89:LEU:CD2	1:A:89:LEU:C	2.89	0.41
1:C:110:GLY:O	1:C:114:ILE:HD12	2.21	0.41
1:C:67:ASP:HB3	1:C:70:LYS:HD3	2.03	0.41
1:B:67:ASP:HB3	1:B:70:LYS:HD3	2.02	0.41
1:B:82:PRO:HA	1:B:106:PHE:CE1	2.56	0.41
1:A:265:ARG:O	1:A:269:ASP:N	2.54	0.41
1:B:136:MET:HE3	1:B:174:MET:CE	2.51	0.41
1:A:154:GLU:OE1	1:A:194:ARG:NH1	2.44	0.41
1:A:267:VAL:HG12	6:A:430:HOH:O	2.21	0.41
1:C:26:LEU:HA	1:C:26:LEU:HD12	1.85	0.41
1:C:217:VAL:HB	1:C:237:ALA:O	2.20	0.41
1:B:79:PHE:CZ	1:B:102:GLY:HA3	2.56	0.41
1:B:114:ILE:CG2	1:B:261:LEU:HD11	2.47	0.41
1:D:76:PHE:HB3	1:D:99:MET:CG	2.50	0.41
1:B:20:GLN:HE21	1:B:241:MET:CE	2.34	0.41
1:B:200:GLU:CD	1:D:162:HIS:HD2	2.24	0.41
1:B:5:ASN:HA	1:B:32:GLN:OE1	2.20	0.41
1:D:137:LEU:HD12	1:D:137:LEU:HA	1.72	0.41
1:D:32:GLN:O	1:D:34:GLY:N	2.54	0.41
1:A:159:HIS:CE1	1:A:168:SER:HB3	2.56	0.41
1:D:217:VAL:HB	1:D:237:ALA:O	2.21	0.41
1:C:263:ASP:N	1:C:266:ASP:OD1	2.54	0.41
1:B:45:LEU:HD11	1:B:63:GLN:C	2.41	0.41

*Continued on next page...*

*Continued from previous page...*

Atom-1	Atom-2	Interatomic distance (Å)	Clash overlap (Å)
1:C:82:PRO:O	1:C:86:LEU:HG	2.21	0.41
1:D:16:ARG:O	1:D:20:GLN:HG2	2.20	0.41
1:D:114:ILE:HD12	1:D:114:ILE:H	1.85	0.41
1:A:73:PHE:C	1:A:73:PHE:CD1	2.94	0.40
1:D:88:HIS:N	1:D:88:HIS:ND1	2.60	0.40
1:B:26:LEU:HA	1:B:26:LEU:HD12	1.80	0.40
1:D:273:LEU:HD22	1:D:273:LEU:OXT	2.21	0.40
1:B:60:VAL:CG1	1:B:61:THR:N	2.84	0.40
1:B:154:GLU:OE2	1:B:201:ARG:NH1	2.55	0.40
1:A:273:LEU:HD23	1:A:273:LEU:HA	1.37	0.40
1:A:23:GLN:HB2	1:A:241:MET:HE1	2.03	0.40
1:B:266:ASP:HA	1:B:271:ASN:HD21	1.86	0.40
1:C:123:ILE:HG22	1:C:124:VAL:N	2.36	0.40
1:A:164:VAL:O	1:C:197:HIS:HA	2.21	0.40
1:B:89:LEU:HD22	1:B:99:MET:HE1	2.03	0.40
1:B:15:GLY:HA3	4:B:302:NAI:H4B	2.02	0.40
1:D:25:ALA:HA	1:D:31:VAL:CG1	2.52	0.40
1:C:91:PHE:CZ	1:C:95:HIS:CD2	3.10	0.40
1:A:21:LEU:HA	1:A:21:LEU:HD23	1.84	0.40
1:B:251:ALA:O	1:B:252:LEU:C	2.60	0.40
1:C:156:ILE:HG23	1:C:209:ALA:HB3	2.02	0.40
1:C:143:ALA:O	1:C:144:ALA:C	2.59	0.40
1:A:199:GLY:O	1:C:164:VAL:HA	2.21	0.40
1:C:265:ARG:O	1:C:269:ASP:CA	2.70	0.40
1:A:74:ASP:O	1:A:97:LYS:O	2.39	0.40
1:A:79:PHE:CD2	1:A:102:GLY:HA3	2.56	0.40
1:B:144:ALA:O	1:B:148:GLY:HA3	2.22	0.40
1:D:256:GLY:O	1:D:257:LYS:C	2.60	0.40

There are no symmetry-related clashes.

## 5.3 Torsion angles [i](#)

### 5.3.1 Protein backbone [i](#)

In the following table, the Percentiles column shows the percent Ramachandran outliers of the chain as a percentile score with respect to all X-ray entries followed by that with respect to entries of similar resolution.

The Analysed column shows the number of residues for which the backbone conformation was analysed, and the total number of residues.



Mol	Chain	Analysed	Favoured	Allowed	Outliers	Percentiles	
1	A	268/273 (98%)	218 (81%)	40 (15%)	10 (4%)	4	5
1	B	267/273 (98%)	214 (80%)	50 (19%)	3 (1%)	17	36
1	C	269/273 (98%)	224 (83%)	40 (15%)	5 (2%)	10	19
1	D	269/273 (98%)	230 (86%)	34 (13%)	5 (2%)	10	19
All	All	1073/1092 (98%)	886 (83%)	164 (15%)	23 (2%)	9	16

All (23) Ramachandran outliers are listed below:

Mol	Chain	Res	Type
1	A	13	ALA
1	A	49	ALA
1	A	58	THR
1	A	82	PRO
1	B	47	SER
1	C	4	ALA
1	D	6	ILE
1	A	255	SER
1	B	70	LYS
1	C	70	LYS
1	C	90	ALA
1	D	70	LYS
1	A	12	GLY
1	C	49	ALA
1	D	160	HIS
1	D	271	ASN
1	A	160	HIS
1	B	160	HIS
1	C	272	ASN
1	A	66	LEU
1	D	267	VAL
1	A	132	GLY
1	A	10	ILE

### 5.3.2 Protein sidechains ⓘ

In the following table, the Percentiles column shows the percent sidechain outliers of the chain as a percentile score with respect to all X-ray entries followed by that with respect to entries of similar resolution.

The Analysed column shows the number of residues for which the sidechain conformation was analysed, and the total number of residues.

Mol	Chain	Analysed	Rotameric	Outliers	Percentiles	
1	A	185/201 (92%)	161 (87%)	24 (13%)	5	9
1	B	195/201 (97%)	166 (85%)	29 (15%)	4	6
1	C	193/201 (96%)	168 (87%)	25 (13%)	5	9
1	D	195/201 (97%)	165 (85%)	30 (15%)	3	5
All	All	768/804 (96%)	660 (86%)	108 (14%)	4	7

All (108) residues with a non-rotameric sidechain are listed below:

Mol	Chain	Res	Type
1	A	5	ASN
1	A	20	GLN
1	A	29	GLU
1	A	31	VAL
1	A	33	LEU
1	A	58	THR
1	A	66	LEU
1	A	69	VAL
1	A	83	GLU
1	A	99	MET
1	A	100	VAL
1	A	101	ILE
1	A	104	THR
1	A	120	ASP
1	A	137	LEU
1	A	145	LYS
1	A	157	GLU
1	A	184	LYS
1	A	227	ILE
1	A	231	LEU
1	A	239	SER
1	A	263	ASP
1	A	268	LEU
1	A	273	LEU
1	B	5	ASN
1	B	19	ARG
1	B	26	LEU
1	B	32	GLN
1	B	40	GLU
1	B	44	LEU
1	B	51	GLU
1	B	60	VAL
1	B	66	LEU

*Continued on next page...*

*Continued from previous page...*

Mol	Chain	Res	Type
1	B	67	ASP
1	B	71	ASP
1	B	92	CYS
1	B	95	HIS
1	B	99	MET
1	B	108	GLU
1	B	115	ARG
1	B	120	ASP
1	B	145	LYS
1	B	157	GLU
1	B	176	GLU
1	B	184	LYS
1	B	227	ILE
1	B	231	LEU
1	B	240	ARG
1	B	254	LEU
1	B	261	LEU
1	B	266	ASP
1	B	272	ASN
1	B	273	LEU
1	C	19	ARG
1	C	26	LEU
1	C	52	LEU
1	C	62	VAL
1	C	66	LEU
1	C	67	ASP
1	C	71	ASP
1	C	87	ASN
1	C	88	HIS
1	C	95	HIS
1	C	99	MET
1	C	108	GLU
1	C	115	ARG
1	C	120	ASP
1	C	145	LYS
1	C	157	GLU
1	C	176	GLU
1	C	184	LYS
1	C	197	HIS
1	C	227	ILE
1	C	231	LEU
1	C	240	ARG

*Continued on next page...*

*Continued from previous page...*

Mol	Chain	Res	Type
1	C	252	LEU
1	C	255	SER
1	C	262	PHE
1	D	5	ASN
1	D	6	ILE
1	D	19	ARG
1	D	26	LEU
1	D	31	VAL
1	D	39	ARG
1	D	42	SER
1	D	43	SER
1	D	52	LEU
1	D	62	VAL
1	D	66	LEU
1	D	67	ASP
1	D	71	ASP
1	D	88	HIS
1	D	108	GLU
1	D	115	ARG
1	D	120	ASP
1	D	137	LEU
1	D	145	LYS
1	D	157	GLU
1	D	176	GLU
1	D	184	LYS
1	D	198	THR
1	D	227	ILE
1	D	231	LEU
1	D	240	ARG
1	D	249	ARG
1	D	261	LEU
1	D	262	PHE
1	D	273	LEU

Some sidechains can be flipped to improve hydrogen bonding and reduce clashes. All (18) such sidechains are listed below:

Mol	Chain	Res	Type
1	A	5	ASN
1	A	20	GLN
1	A	162	HIS
1	A	245	ASN
1	B	20	GLN

*Continued on next page...*

*Continued from previous page...*

Mol	Chain	Res	Type
1	B	88	HIS
1	B	128	ASN
1	B	159	HIS
1	B	271	ASN
1	C	20	GLN
1	C	128	ASN
1	C	162	HIS
1	C	197	HIS
1	D	5	ASN
1	D	20	GLN
1	D	128	ASN
1	D	162	HIS
1	D	197	HIS

### 5.3.3 RNA [i](#)

There are no RNA molecules in this entry.

## 5.4 Non-standard residues in protein, DNA, RNA chains [i](#)

There are no non-standard protein/DNA/RNA residues in this entry.

## 5.5 Carbohydrates [i](#)

There are no carbohydrates in this entry.

## 5.6 Ligand geometry [i](#)

Of 9 ligands modelled in this entry, 2 are monoatomic - leaving 7 for Mogul analysis.

In the following table, the Counts columns list the number of bonds (or angles) for which Mogul statistics could be retrieved, the number of bonds (or angles) that are observed in the model and the number of bonds (or angles) that are defined in the chemical component dictionary. The Link column lists molecule types, if any, to which the group is linked. The Z score for a bond length (or angle) is the number of standard deviations the observed value is removed from the expected value. A bond length (or angle) with  $|Z| > 2$  is considered an outlier worth inspection. RMSZ is the root-mean-square of all Z scores of the bond lengths (or angles).

Mol	Type	Chain	Res	Link	Bond lengths			Bond angles		
					Counts	RMSZ	$\# Z  > 2$	Counts	RMSZ	$\# Z  > 2$
2	PO4	A	301	-	4,4,4	0.51	0	6,6,6	0.27	0

Mol	Type	Chain	Res	Link	Bond lengths			Bond angles		
					Counts	RMSZ	# Z  > 2	Counts	RMSZ	# Z  > 2
4	NAI	B	302	-	38,48,48	1.66	8 (21%)	48,73,73	2.13	7 (14%)
5	PDC	B	303	-	6,12,12	3.14	2 (33%)	8,16,16	0.59	0
4	NAI	C	301	-	38,48,48	1.59	7 (18%)	48,73,73	2.10	11 (22%)
5	PDC	C	302	-	6,12,12	3.36	2 (33%)	8,16,16	1.35	0
4	NAI	D	302	-	38,48,48	1.44	5 (13%)	48,73,73	2.19	8 (16%)
5	PDC	D	303	-	6,12,12	2.32	2 (33%)	8,16,16	1.62	3 (37%)

In the following table, the Chirals column lists the number of chiral outliers, the number of chiral centers analysed, the number of these observed in the model and the number defined in the chemical component dictionary. Similar counts are reported in the Torsion and Rings columns. '-' means no outliers of that kind were identified.

Mol	Type	Chain	Res	Link	Chirals	Torsions	Rings
2	PO4	A	301	-	-	0/0/0/0	0/0/0/0
4	NAI	B	302	-	-	0/25/72/72	0/5/5/5
5	PDC	B	303	-	-	0/0/8/8	0/1/1/1
4	NAI	C	301	-	-	0/25/72/72	0/5/5/5
5	PDC	C	302	-	-	0/0/8/8	0/1/1/1
4	NAI	D	302	-	-	0/25/72/72	0/5/5/5
5	PDC	D	303	-	-	0/0/8/8	0/1/1/1

All (26) bond length outliers are listed below:

Mol	Chain	Res	Type	Atoms	Z	Observed(Å)	Ideal(Å)
4	C	301	NAI	C4N-C5N	-4.71	1.38	1.49
4	D	302	NAI	C4N-C5N	-3.91	1.40	1.49
4	C	301	NAI	C5A-C4A	-3.38	1.32	1.40
4	D	302	NAI	C5A-C4A	-3.30	1.33	1.40
4	B	302	NAI	C5A-C4A	-2.53	1.34	1.40
4	B	302	NAI	C4N-C5N	-2.33	1.44	1.49
4	C	301	NAI	C5B-C4B	2.01	1.58	1.51
4	D	302	NAI	C2A-N3A	2.04	1.35	1.32
4	D	302	NAI	O5B-C5B	2.10	1.53	1.44
4	B	302	NAI	O5B-C5B	2.23	1.53	1.44
4	B	302	NAI	C2A-N1A	2.31	1.38	1.33
4	C	301	NAI	O4B-C1B	2.53	1.44	1.41
4	B	302	NAI	C1D-N1N	2.55	1.54	1.46
4	C	301	NAI	C2N-C3N	2.62	1.41	1.34
4	C	301	NAI	O5B-C5B	2.63	1.55	1.44
4	B	302	NAI	C2A-N3A	2.64	1.36	1.32
4	D	302	NAI	C6N-C5N	3.35	1.39	1.33

*Continued on next page...*

*Continued from previous page...*

Mol	Chain	Res	Type	Atoms	Z	Observed(Å)	Ideal(Å)
4	B	302	NAI	C2N-C3N	3.37	1.43	1.34
5	D	303	PDC	C2-N1	3.54	1.39	1.34
4	C	301	NAI	C6N-C5N	3.75	1.40	1.33
5	D	303	PDC	C6-N1	4.09	1.40	1.34
5	B	303	PDC	C2-N1	5.16	1.42	1.34
5	B	303	PDC	C6-N1	5.26	1.42	1.34
5	C	302	PDC	C2-N1	5.34	1.42	1.34
4	B	302	NAI	C6N-C5N	5.39	1.43	1.33
5	C	302	PDC	C6-N1	5.78	1.42	1.34

All (29) bond angle outliers are listed below:

Mol	Chain	Res	Type	Atoms	Z	Observed(°)	Ideal(°)
4	C	301	NAI	N3A-C2A-N1A	-4.55	125.41	128.89
4	C	301	NAI	PN-O3-PA	-2.78	124.94	132.73
4	C	301	NAI	O3B-C3B-C4B	-2.72	102.89	111.05
4	D	302	NAI	PN-O3-PA	-2.70	125.14	132.73
4	C	301	NAI	O4D-C1D-N1N	-2.33	103.15	108.07
4	D	302	NAI	N3A-C2A-N1A	-2.31	127.12	128.89
4	B	302	NAI	N3A-C2A-N1A	-2.20	127.21	128.89
5	D	303	PDC	C5-C6-N1	-2.14	119.06	122.01
4	D	302	NAI	C4N-C5N-C6N	-2.03	119.24	122.58
5	D	303	PDC	C6-N1-C2	2.09	120.52	117.99
4	C	301	NAI	O4B-C4B-C5B	2.12	116.89	109.32
4	B	302	NAI	O4B-C1B-N9A	2.12	112.54	108.10
4	D	302	NAI	C4A-C5A-N7A	2.36	111.65	109.48
4	D	302	NAI	O5D-C5D-C4D	2.56	118.54	109.12
5	D	303	PDC	C5-C6-C8	2.60	123.14	120.15
4	B	302	NAI	C4A-C5A-N7A	2.66	111.93	109.48
4	C	301	NAI	O4B-C1B-N9A	2.73	113.82	108.10
4	B	302	NAI	C5N-C4N-C3N	2.75	120.11	112.52
4	C	301	NAI	C5N-C4N-C3N	2.87	120.43	112.52
4	B	302	NAI	O5B-C5B-C4B	3.26	121.15	109.12
4	B	302	NAI	O5D-C5D-C4D	3.43	121.75	109.12
4	C	301	NAI	C4A-C5A-N7A	3.57	112.77	109.48
4	D	302	NAI	C5N-C4N-C3N	3.61	122.46	112.52
4	C	301	NAI	O5D-C5D-C4D	3.89	123.47	109.12
4	C	301	NAI	O5B-C5B-C4B	4.01	123.91	109.12
4	D	302	NAI	O5B-C5B-C4B	4.07	124.12	109.12
4	C	301	NAI	C1B-N9A-C4A	8.73	140.11	126.94
4	D	302	NAI	C1B-N9A-C4A	11.30	143.99	126.94
4	B	302	NAI	C1B-N9A-C4A	11.44	144.19	126.94

There are no chirality outliers.

There are no torsion outliers.

There are no ring outliers.

6 monomers are involved in 21 short contacts:

Mol	Chain	Res	Type	Clashes	Symm-Clashes
4	B	302	NAI	6	0
5	B	303	PDC	1	0
4	C	301	NAI	3	0
5	C	302	PDC	2	0
4	D	302	NAI	5	0
5	D	303	PDC	4	0

## 5.7 Other polymers [i](#)

There are no such residues in this entry.

## 5.8 Polymer linkage issues [i](#)

There are no chain breaks in this entry.



## 6 Fit of model and data [i](#)

### 6.1 Protein, DNA and RNA chains [i](#)

In the following table, the column labelled ‘#RSRZ> 2’ contains the number (and percentage) of RSRZ outliers, followed by percent RSRZ outliers for the chain as percentile scores relative to all X-ray entries and entries of similar resolution. The OWAB column contains the minimum, median, 95<sup>th</sup> percentile and maximum values of the occupancy-weighted average B-factor per residue. The column labelled ‘Q< 0.9’ lists the number of (and percentage) of residues with an average occupancy less than 0.9.

Mol	Chain	Analysed	<RSRZ>	#RSRZ>2		OWAB(Å <sup>2</sup> )	Q<0.9
1	A	270/273 (98%)	-0.71	0	100   100	5, 30, 64, 87	0
1	B	269/273 (98%)	-0.57	0	100   100	8, 31, 64, 77	0
1	C	271/273 (99%)	-0.58	1 (0%)	93   91	8, 28, 62, 91	0
1	D	271/273 (99%)	-0.65	0	100   100	9, 29, 62, 77	0
All	All	1081/1092 (98%)	-0.63	1 (0%)	95   95	5, 30, 63, 91	0

All (1) RSRZ outliers are listed below:

Mol	Chain	Res	Type	RSRZ
1	C	3	ASP	3.0

### 6.2 Non-standard residues in protein, DNA, RNA chains [i](#)

There are no non-standard protein/DNA/RNA residues in this entry.

### 6.3 Carbohydrates [i](#)

There are no carbohydrates in this entry.

### 6.4 Ligands [i](#)

In the following table, the Atoms column lists the number of modelled atoms in the group and the number defined in the chemical component dictionary. LLDF column lists the quality of electron density of the group with respect to its neighbouring residues in protein, DNA or RNA chains. The B-factors column lists the minimum, median, 95<sup>th</sup> percentile and maximum values of B factors of atoms in the group. The column labelled ‘Q< 0.9’ lists the number of atoms with occupancy less than 0.9.

Mol	Type	Chain	Res	Atoms	RSCC	RSR	LLDF	B-factors( $\text{\AA}^2$ )	Q<0.9
5	PDC	D	303	12/12	0.96	0.12	0.23	2,17,22,29	0
5	PDC	C	302	12/12	0.96	0.12	-0.02	2,11,15,15	0
4	NAI	D	302	44/44	0.96	0.11	-0.77	2,25,51,52	0
4	NAI	B	302	44/44	0.95	0.11	-0.95	4,32,49,51	0
4	NAI	C	301	44/44	0.97	0.10	-1.12	7,15,32,35	0
3	K	D	301	1/1	0.98	0.08	-1.64	24,24,24,24	0
5	PDC	B	303	12/12	0.98	0.08	-1.67	2,4,12,14	0
3	K	B	301	1/1	0.99	0.06	-3.15	29,29,29,29	0
2	PO4	A	301	5/5	0.91	0.18	-	37,41,50,56	0

## 6.5 Other polymers [i](#)

There are no such residues in this entry.