



Full wwPDB X-ray Structure Validation Report ⓘ

Feb 1, 2016 – 02:52 PM GMT

PDB ID : 4ARZ
Title : The crystal structure of Gtr1p-Gtr2p complexed with GTP-GDP
Authors : Jeong, J.H.; Kim, Y.G.
Deposited on : 2012-04-27
Resolution : 3.10 Å(reported)

This is a Full wwPDB X-ray Structure Validation Report for a publicly released PDB entry.
We welcome your comments at validation@mail.wwpdb.org
A user guide is available at
<http://wwpdb.org/validation/2016/XrayValidationReportHelp>
with specific help available everywhere you see the ⓘ symbol.

The following versions of software and data (see [references ⓘ](#)) were used in the production of this report:

MolProbity : 4.02b-467
Mogul : 1.7 (RC4), CSD as536be (2015)
Xtriage (Phenix) : 1.9-1692
EDS : rb-20026688
Percentile statistics : 20151230.v01 (using entries in the PDB archive December 30th 2015)
Refmac : 5.8.0135
CCP4 : 6.5.0
Ideal geometry (proteins) : Engh & Huber (2001)
Ideal geometry (DNA, RNA) : Parkinson et al. (1996)
Validation Pipeline (wwPDB-VP) : trunk26865

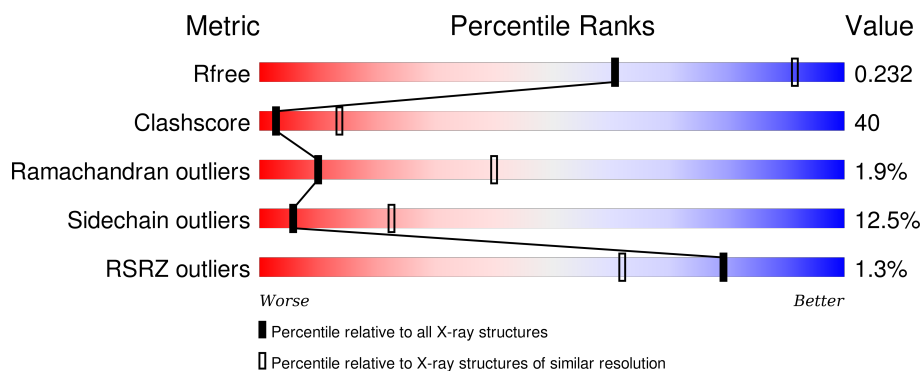
1 Overall quality at a glance

The following experimental techniques were used to determine the structure:

X-RAY DIFFRACTION

The reported resolution of this entry is 3.10 Å.

Percentile scores (ranging between 0-100) for global validation metrics of the entry are shown in the following graphic. The table shows the number of entries on which the scores are based.



Metric	Whole archive (#Entries)	Similar resolution (#Entries, resolution range(Å))
R_{free}	91344	1114 (3.14-3.06)
Clashscore	102246	1222 (3.14-3.06)
Ramachandran outliers	100387	1174 (3.14-3.06)
Sidechain outliers	100360	1174 (3.14-3.06)
RSRZ outliers	91569	1119 (3.14-3.06)

The table below summarises the geometric issues observed across the polymeric chains and their fit to the electron density. The red, orange, yellow and green segments on the lower bar indicate the fraction of residues that contain outliers for ≥ 3 , 2, 1 and 0 types of geometric quality criteria. A grey segment represents the fraction of residues that are not modelled. The numeric value for each fraction is indicated below the corresponding segment, with a dot representing fractions $\leq 5\%$. The upper red bar (where present) indicates the fraction of residues that have poor fit to the electron density. The numeric value is given above the bar.

Mol	Chain	Length	Quality of chain
1	A	310	<div> <div>%</div> <div> <div></div> <div>33%</div> <div>53%</div> <div>8%</div> <div>6%</div> </div> </div>
2	B	341	<div> <div>%</div> <div> <div></div> <div>31%</div> <div>48%</div> <div>10%</div> <div>•</div> <div>11%</div> </div> </div>

2 Entry composition [i](#)

There are 6 unique types of molecules in this entry. The entry contains 4870 atoms, of which 0 are hydrogens and 0 are deuteriums.

In the tables below, the ZeroOcc column contains the number of atoms modelled with zero occupancy, the AltConf column contains the number of residues with at least one atom in alternate conformation and the Trace column contains the number of residues modelled with at most 2 atoms.

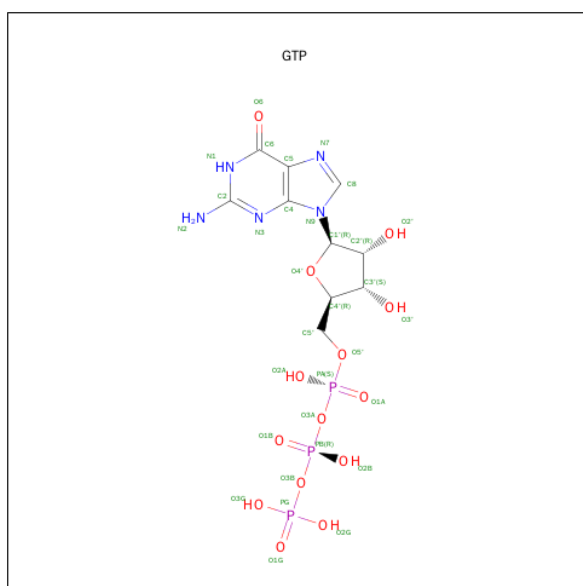
- Molecule 1 is a protein called GTP-BINDING PROTEIN GTR1.

Mol	Chain	Residues	Atoms					ZeroOcc	AltConf	Trace
1	A	291	Total	C	N	O	S	0	0	0
			2372	1528	397	429	18			

- Molecule 2 is a protein called GTP-BINDING PROTEIN GTR2.

Mol	Chain	Residues	Atoms					ZeroOcc	AltConf	Trace
2	B	304	Total	C	N	O	S	0	0	0
			2428	1557	387	470	14			

- Molecule 3 is GUANOSINE-5'-TRIPHOSPHATE (three-letter code: GTP) (formula: $C_{10}H_{16}N_5O_{14}P_3$).

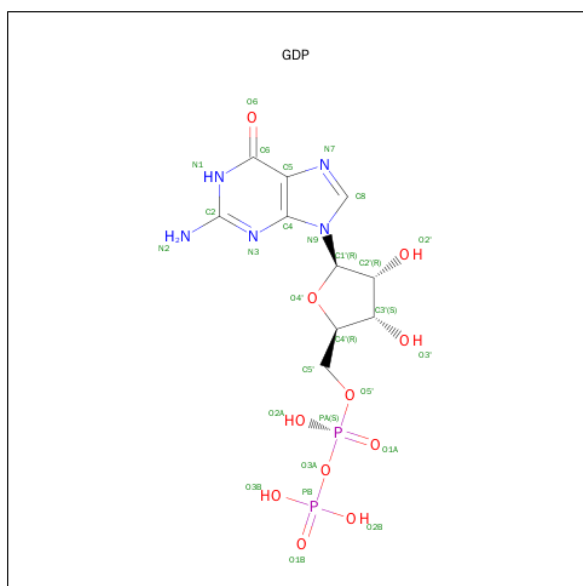


Mol	Chain	Residues	Atoms					ZeroOcc	AltConf
3	A	1	Total	C	N	O	P	0	0
			32	10	5	14	3		

- Molecule 4 is MAGNESIUM ION (three-letter code: MG) (formula: Mg).

Mol	Chain	Residues	Atoms	ZeroOcc	AltConf
4	A	1	Total Mg 1 1	0	0

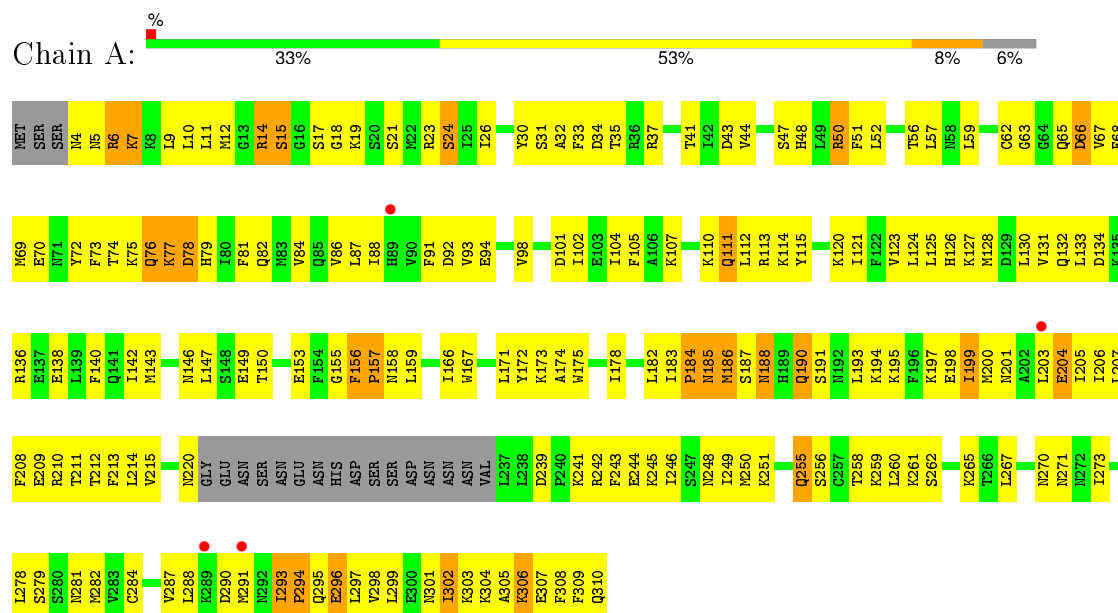
- Molecule 5 is GUANOSINE-5'-DIPHOSPHATE (three-letter code: GDP) (formula: $C_{10}H_{15}N_5O_{11}P_2$).



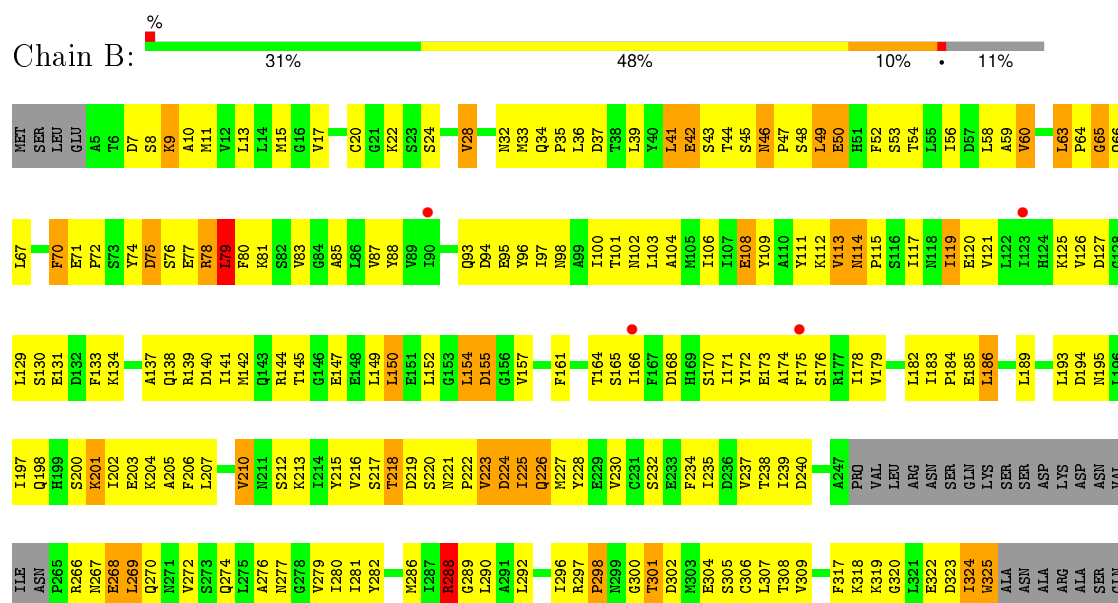
3 Residue-property plots

These plots are drawn for all protein, RNA and DNA chains in the entry. The first graphic for a chain summarises the proportions of errors displayed in the second graphic. The second graphic shows the sequence view annotated by issues in geometry and electron density. Residues are color-coded according to the number of geometric quality criteria for which they contain at least one outlier: green = 0, yellow = 1, orange = 2 and red = 3 or more. A red dot above a residue indicates a poor fit to the electron density ($RSRZ > 2$). Stretches of 2 or more consecutive residues without any outlier are shown as a green connector. Residues present in the sample, but not in the model, are shown in grey.

• Molecule 1: GTP-BINDING PROTEIN GTR1



• Molecule 2: GTP-BINDING PROTEIN GTR2



ALA
LYS
ASN
SER
ILE
GLU
ASP
VAL

4 Data and refinement statistics

Property	Value	Source
Space group	C 2 2 21	Depositor
Cell constants a, b, c, α , β , γ	90.71Å 148.90Å 117.76Å 90.00° 90.00° 90.00°	Depositor
Resolution (Å)	30.00 – 3.10 46.88 – 3.10	Depositor EDS
% Data completeness (in resolution range)	92.5 (30.00-3.10) 93.2 (46.88-3.10)	Depositor EDS
R_{merge}	0.09	Depositor
R_{sym}	(Not available)	Depositor
$\langle I/\sigma(I) \rangle$ ¹	0.77 (at 3.12Å)	Xtriage
Refinement program	CNS 1.2	Depositor
R, R_{free}	0.225 , 0.272 0.229 , 0.232	Depositor DCC
R_{free} test set	709 reflections (5.14%)	DCC
Wilson B-factor (Å ²)	70.0	Xtriage
Anisotropy	0.561	Xtriage
Bulk solvent k_{sol} (e/Å ³), B_{sol} (Å ²)	0.30 , 44.1	EDS
Estimated twinning fraction	0.014 for 1/2*h-1/2*k,-3/2*h-1/2*k,-l 0.035 for 1/2*h+1/2*k,3/2*h-1/2*k,-l	Xtriage
L-test for twinning ²	$\langle L \rangle = 0.49$, $\langle L^2 \rangle = 0.32$	Xtriage
Outliers	0 of 14806 reflections	Xtriage
F_o, F_c correlation	0.93	EDS
Total number of atoms	4870	wwPDB-VP
Average B, all atoms (Å ²)	87.0	wwPDB-VP

Xtriage's analysis on translational NCS is as follows: *The largest off-origin peak in the Patterson function is 3.63% of the height of the origin peak. No significant pseudotranslation is detected.*

¹Intensities estimated from amplitudes.

²Theoretical values of $\langle |L| \rangle$, $\langle L^2 \rangle$ for acentric reflections are 0.5, 0.375 respectively for untwinned datasets, and 0.333, 0.2 for perfectly twinned datasets.

5 Model quality [i](#)

5.1 Standard geometry [i](#)

Bond lengths and bond angles in the following residue types are not validated in this section: GDP, GTP, MG

The Z score for a bond length (or angle) is the number of standard deviations the observed value is removed from the expected value. A bond length (or angle) with $|Z| > 5$ is considered an outlier worth inspection. RMSZ is the root-mean-square of all Z scores of the bond lengths (or angles).

Mol	Chain	Bond lengths		Bond angles	
		RMSZ	$\# Z > 5$	RMSZ	$\# Z > 5$
1	A	0.47	0/2415	0.71	2/3239 (0.1%)
2	B	0.45	0/2470	0.74	1/3345 (0.0%)
All	All	0.46	0/4885	0.72	3/6584 (0.0%)

There are no bond length outliers.

All (3) bond angle outliers are listed below:

Mol	Chain	Res	Type	Atoms	Z	Observed(°)	Ideal(°)
1	A	288	LEU	N-CA-C	7.42	131.02	111.00
2	B	79	LEU	CA-CB-CG	6.81	130.96	115.30
1	A	293	ILE	N-CA-C	-5.29	96.73	111.00

There are no chirality outliers.

There are no planarity outliers.

5.2 Too-close contacts [i](#)

In the following table, the Non-H and H(model) columns list the number of non-hydrogen atoms and hydrogen atoms in the chain respectively. The H(added) column lists the number of hydrogen atoms added and optimized by MolProbity. The Clashes column lists the number of clashes within the asymmetric unit, whereas Symm-Clashes lists symmetry related clashes.

Mol	Chain	Non-H	H(model)	H(added)	Clashes	Symm-Clashes
1	A	2372	0	2426	196	0
2	B	2428	0	2424	203	0
3	A	32	0	12	4	0
4	A	1	0	0	0	0
5	B	28	0	12	2	0
6	A	6	0	0	0	0

Continued on next page...

Continued from previous page...

Mol	Chain	Non-H	H(model)	H(added)	Clashes	Symm-Clashes
6	B	3	0	0	0	0
All	All	4870	0	4874	388	0

The all-atom clashscore is defined as the number of clashes found per 1000 atoms (including hydrogen atoms). The all-atom clashscore for this structure is 40.

All (388) close contacts within the same asymmetric unit are listed below, sorted by their clash magnitude.

Atom-1	Atom-2	Interatomic distance (Å)	Clash overlap (Å)
1:A:270:ASN:HD21	2:B:269:LEU:HD22	1.09	1.17
1:A:9:LEU:HD22	1:A:86:VAL:HB	1.26	1.16
1:A:249:ILE:HD11	2:B:237:VAL:HA	1.34	1.06
1:A:93:VAL:HG22	1:A:125:LEU:HD22	1.40	1.02
1:A:6:ARG:H	1:A:6:ARG:HD3	1.22	1.00
2:B:201:LYS:HA	2:B:201:LYS:HE2	1.39	0.99
1:A:14:ARG:HD3	1:A:15:SER:H	1.28	0.97
1:A:184:PRO:HG2	1:A:185:ASN:HD22	1.24	0.97
1:A:78:ASP:O	1:A:82:GLN:HB2	1.66	0.96
1:A:173:LYS:HB2	1:A:244:GLU:HG2	1.49	0.92
1:A:9:LEU:CD2	1:A:86:VAL:HB	2.02	0.89
2:B:182:LEU:HB3	2:B:183:ILE:HD12	1.53	0.89
1:A:14:ARG:HD3	1:A:15:SER:N	1.87	0.89
1:A:4:ASN:HD21	1:A:7:LYS:HE3	1.35	0.88
1:A:203:LEU:HB3	1:A:287:VAL:HG13	1.57	0.87
2:B:49:LEU:HD22	2:B:49:LEU:H	1.40	0.84
1:A:245:LYS:O	1:A:249:ILE:HG22	1.78	0.83
1:A:203:LEU:HB3	1:A:287:VAL:CG1	2.09	0.82
2:B:225:ILE:HB	2:B:227:MET:HG2	1.62	0.81
2:B:277:ASN:OD1	2:B:279:VAL:HG23	1.81	0.80
1:A:184:PRO:HG2	1:A:185:ASN:ND2	1.96	0.80
1:A:255:GLN:O	1:A:258:THR:HG23	1.81	0.80
1:A:190:GLN:HE21	1:A:191:SER:N	1.80	0.80
1:A:23:ARG:HG3	1:A:59:LEU:HD23	1.63	0.79
2:B:166:ILE:HG22	2:B:171:ILE:HD13	1.65	0.79
2:B:183:ILE:O	2:B:186:LEU:HD22	1.83	0.78
1:A:143:MET:HE3	1:A:147:LEU:HD11	1.66	0.78
1:A:270:ASN:ND2	2:B:269:LEU:HD22	1.93	0.78
1:A:6:ARG:N	1:A:6:ARG:HD3	1.96	0.78
1:A:70:GLU:O	1:A:74:THR:HG23	1.84	0.78
2:B:210:VAL:HG23	2:B:289:GLY:O	1.85	0.77
1:A:26:ILE:HD11	1:A:171:LEU:HD22	1.65	0.76

Continued on next page...

Continued from previous page...

Atom-1	Atom-2	Interatomic distance (Å)	Clash overlap (Å)
2:B:46:ASN:HB2	2:B:47:PRO:HD3	1.68	0.76
2:B:194:ASP:O	2:B:198:GLN:HB2	1.86	0.75
1:A:21:SER:HB3	1:A:35:THR:HG21	1.66	0.75
1:A:77:LYS:HD3	1:A:115:TYR:OH	1.86	0.74
2:B:70:PHE:CD1	2:B:70:PHE:N	2.53	0.74
1:A:270:ASN:HD21	2:B:269:LEU:CD2	1.97	0.74
2:B:182:LEU:O	2:B:184:PRO:HD3	1.88	0.74
2:B:32:ASN:ND2	2:B:213:LYS:H	1.86	0.74
1:A:295:GLN:O	1:A:299:LEU:HG	1.90	0.72
2:B:32:ASN:HD22	2:B:213:LYS:H	1.35	0.72
1:A:31:SER:OG	1:A:34:ASP:HB2	1.90	0.71
1:A:23:ARG:HG3	1:A:59:LEU:CD2	2.20	0.71
1:A:215:VAL:HG21	1:A:243:PHE:HB3	1.73	0.71
2:B:15:MET:SD	2:B:106:ILE:HG21	2.31	0.71
2:B:130:SER:O	2:B:133:PHE:HB3	1.91	0.71
2:B:126:VAL:O	2:B:126:VAL:HG12	1.92	0.70
2:B:10:ALA:HB1	2:B:182:LEU:HD13	1.74	0.70
1:A:185:ASN:H	1:A:185:ASN:ND2	1.89	0.69
2:B:70:PHE:HD1	2:B:70:PHE:N	1.90	0.69
1:A:81:PHE:CG	1:A:111:GLN:HB3	2.28	0.68
1:A:77:LYS:HD2	1:A:78:ASP:H	1.59	0.68
2:B:81:LYS:HE3	2:B:113:VAL:HG22	1.76	0.67
1:A:121:ILE:HG22	1:A:159:LEU:HB2	1.75	0.67
1:A:23:ARG:HH11	1:A:23:ARG:HG2	1.59	0.67
1:A:74:THR:OG1	1:A:75:LYS:N	2.25	0.67
1:A:212:THR:HB	1:A:214:LEU:HD13	1.77	0.67
2:B:183:ILE:N	2:B:183:ILE:HD12	2.09	0.66
2:B:138:GLN:HE21	2:B:142:MET:CE	2.09	0.66
1:A:260:LEU:HD11	2:B:227:MET:SD	2.36	0.66
2:B:126:VAL:HG12	2:B:134:LYS:HE2	1.78	0.66
1:A:10:LEU:HD13	1:A:12:MET:HE1	1.77	0.65
2:B:206:PHE:O	2:B:292:LEU:HD12	1.96	0.65
2:B:56:ILE:HD12	2:B:58:LEU:HD21	1.78	0.65
2:B:204:LYS:HD2	2:B:219:ASP:OD2	1.97	0.65
1:A:146:ASN:O	1:A:149:GLU:HG2	1.96	0.65
2:B:319:LYS:HE2	2:B:323:ASP:OD1	1.97	0.65
1:A:69:MET:CE	1:A:104:ILE:HG21	2.27	0.65
1:A:4:ASN:HD21	1:A:7:LYS:CE	2.09	0.64
2:B:267:ASN:C	2:B:268:GLU:HG3	2.16	0.64
2:B:13:LEU:HB2	2:B:83:VAL:HG21	1.80	0.64
1:A:166:ILE:HA	1:A:171:LEU:HD12	1.80	0.64

Continued on next page...

Continued from previous page...

Atom-1	Atom-2	Interatomic distance (Å)	Clash overlap (Å)
1:A:207:LEU:HD22	1:A:282:MET:HE2	1.80	0.64
1:A:190:GLN:C	1:A:190:GLN:HE21	2.01	0.64
1:A:195:LYS:O	1:A:199:ILE:HG23	1.97	0.64
2:B:225:ILE:HD12	2:B:225:ILE:H	1.62	0.64
2:B:46:ASN:O	2:B:47:PRO:C	2.36	0.63
2:B:49:LEU:H	2:B:49:LEU:CD2	2.11	0.63
1:A:125:LEU:HD12	1:A:140:PHE:HD1	1.62	0.63
2:B:47:PRO:HB2	2:B:50:GLU:HG2	1.78	0.63
1:A:203:LEU:HD23	1:A:203:LEU:O	1.99	0.63
1:A:93:VAL:HG21	1:A:128:MET:SD	2.38	0.62
2:B:186:LEU:C	2:B:186:LEU:HD23	2.19	0.62
1:A:77:LYS:HD2	1:A:78:ASP:N	2.14	0.62
2:B:126:VAL:HA	2:B:129:LEU:HD12	1.81	0.62
2:B:183:ILE:HD12	2:B:183:ILE:H	1.65	0.62
1:A:132:GLN:HG3	1:A:134:ASP:OD1	2.00	0.62
2:B:288:ARG:O	2:B:288:ARG:HG2	1.99	0.62
1:A:4:ASN:ND2	1:A:7:LYS:HE3	2.09	0.61
1:A:110:LYS:O	1:A:113:ARG:HG2	2.00	0.61
2:B:139:ARG:C	2:B:139:ARG:HD2	2.21	0.61
1:A:172:TYR:HE2	1:A:248:ASN:HD22	1.49	0.61
2:B:76:SER:O	2:B:80:PHE:HD1	1.84	0.61
2:B:77:GLU:CB	2:B:109:TYR:OH	2.48	0.61
1:A:142:ILE:O	1:A:146:ASN:ND2	2.33	0.61
2:B:305:SER:HA	2:B:308:THR:HG23	1.82	0.61
1:A:74:THR:O	1:A:77:LYS:HG3	2.00	0.60
2:B:49:LEU:HD22	2:B:49:LEU:N	2.12	0.60
2:B:11:MET:O	2:B:83:VAL:HG22	2.01	0.60
2:B:77:GLU:HB3	2:B:109:TYR:OH	2.02	0.60
2:B:201:LYS:HD3	2:B:297:ARG:O	2.00	0.60
2:B:50:GLU:O	2:B:52:PHE:N	2.34	0.60
1:A:173:LYS:CB	1:A:244:GLU:HG2	2.28	0.60
1:A:249:ILE:HD12	2:B:240:ASP:HB2	1.83	0.60
2:B:288:ARG:NH1	2:B:325:TRP:CH2	2.70	0.60
2:B:35:PRO:HG2	2:B:212:SER:HB2	1.82	0.59
2:B:288:ARG:HH11	2:B:325:TRP:HH2	1.50	0.59
1:A:65:GLN:HB2	1:A:68:PHE:HD2	1.68	0.59
2:B:32:ASN:HD22	2:B:212:SER:HA	1.67	0.59
1:A:278:LEU:HD23	1:A:309:PHE:HB2	1.85	0.59
2:B:129:LEU:HD13	2:B:133:PHE:HE2	1.68	0.59
1:A:94:GLU:CD	1:A:130:LEU:HD13	2.22	0.59
1:A:185:ASN:HD22	1:A:185:ASN:H	1.50	0.58

Continued on next page...

Continued from previous page...

Atom-1	Atom-2	Interatomic distance (Å)	Clash overlap (Å)
2:B:39:LEU:HA	2:B:43:SER:HB2	1.85	0.58
2:B:137:ALA:O	2:B:141:ILE:HG13	2.03	0.58
2:B:75:ASP:N	2:B:75:ASP:OD1	2.35	0.58
2:B:71:GLU:HB3	2:B:72:PRO:HD2	1.85	0.58
2:B:10:ALA:CB	2:B:182:LEU:HD13	2.33	0.58
2:B:304:GLU:O	2:B:308:THR:HG23	2.03	0.58
2:B:219:ASP:OD2	2:B:221:ASN:HB3	2.03	0.57
1:A:242:ARG:O	1:A:246:ILE:HG13	2.04	0.57
1:A:50:ARG:HE	1:A:56:THR:HB	1.70	0.57
2:B:17:VAL:HA	2:B:63:LEU:O	2.04	0.57
2:B:22:LYS:HG2	5:B:400:GDP:O3B	2.04	0.57
1:A:34:ASP:OD1	1:A:37:ARG:NH1	2.37	0.57
2:B:164:THR:HB	2:B:171:ILE:HG23	1.87	0.57
2:B:203:GLU:OE2	2:B:297:ARG:HD2	2.05	0.57
1:A:48:HIS:HA	1:A:57:LEU:O	2.05	0.57
2:B:125:LYS:HG2	5:B:400:GDP:C6	2.40	0.57
2:B:320:GLY:O	2:B:324:ILE:HG23	2.05	0.57
1:A:143:MET:HE1	1:A:147:LEU:HD21	1.86	0.56
1:A:86:VAL:HG22	1:A:120:LYS:HB2	1.87	0.56
1:A:69:MET:HE1	1:A:104:ILE:HG21	1.88	0.56
2:B:217:SER:O	2:B:218:THR:HG22	2.05	0.56
2:B:114:ASN:O	2:B:117:ILE:HB	2.06	0.56
1:A:78:ASP:HA	1:A:115:TYR:CE2	2.41	0.56
1:A:23:ARG:NH1	1:A:23:ARG:HG2	2.20	0.56
2:B:119:ILE:HD12	2:B:119:ILE:C	2.26	0.56
1:A:290:ASP:CG	1:A:291:MET:H	2.09	0.56
2:B:288:ARG:NH1	2:B:325:TRP:HH2	2.04	0.55
1:A:303:LYS:HA	1:A:306:LYS:CD	2.36	0.55
2:B:129:LEU:HD13	2:B:133:PHE:CE2	2.42	0.55
1:A:32:ALA:HB3	1:A:167:TRP:CZ3	2.42	0.55
1:A:18:GLY:HA2	3:A:400:GTP:O2A	2.06	0.55
1:A:155:GLY:O	1:A:157:PRO:HD3	2.06	0.55
2:B:37:ASP:O	2:B:41:LEU:HB2	2.07	0.55
1:A:88:ILE:N	1:A:88:ILE:HD12	2.21	0.54
1:A:255:GLN:O	1:A:255:GLN:HG3	2.05	0.54
2:B:222:PRO:O	2:B:224:ASP:N	2.37	0.54
2:B:318:LYS:O	2:B:322:GLU:HG3	2.06	0.54
1:A:72:TYR:O	1:A:77:LYS:HA	2.08	0.54
2:B:24:SER:HB3	2:B:166:ILE:HD13	1.89	0.54
1:A:303:LYS:HA	1:A:306:LYS:HD3	1.90	0.54
2:B:130:SER:OG	2:B:133:PHE:HB2	2.08	0.54

Continued on next page...

Continued from previous page...

Atom-1	Atom-2	Interatomic distance (Å)	Clash overlap (Å)
1:A:69:MET:HE3	1:A:104:ILE:HG21	1.90	0.54
1:A:265:LYS:HB2	2:B:274:GLN:O	2.08	0.54
1:A:51:PHE:CZ	1:A:209:GLU:HG3	2.42	0.53
2:B:100:ILE:HD11	2:B:141:ILE:HG23	1.91	0.53
2:B:74:TYR:O	2:B:77:GLU:HG2	2.08	0.53
2:B:76:SER:O	2:B:79:LEU:HB3	2.08	0.53
2:B:13:LEU:HD12	2:B:59:ALA:O	2.08	0.53
2:B:269:LEU:HD13	2:B:270:GLN:N	2.24	0.53
1:A:10:LEU:HD13	1:A:12:MET:CE	2.38	0.53
2:B:193:LEU:HD13	2:B:218:THR:HA	1.91	0.53
1:A:207:LEU:HD13	1:A:282:MET:HE1	1.89	0.53
1:A:18:GLY:N	3:A:400:GTP:O2B	2.42	0.53
2:B:47:PRO:C	2:B:49:LEU:N	2.60	0.53
2:B:24:SER:HB3	2:B:166:ILE:CD1	2.39	0.53
2:B:32:ASN:HD22	2:B:213:LYS:N	2.06	0.53
1:A:133:LEU:HD23	1:A:136:ARG:HD2	1.91	0.53
2:B:114:ASN:HD22	2:B:114:ASN:C	2.13	0.52
2:B:286:MET:HE3	2:B:318:LYS:HA	1.90	0.52
2:B:97:ILE:HG12	2:B:144:ARG:NH1	2.25	0.52
1:A:93:VAL:HG23	1:A:126:HIS:O	2.10	0.52
1:A:171:LEU:HD23	1:A:175:TRP:HD1	1.75	0.52
2:B:32:ASN:ND2	2:B:212:SER:HA	2.24	0.52
2:B:282:TYR:CE1	2:B:307:LEU:HD21	2.45	0.52
1:A:211:THR:HG22	1:A:212:THR:HG23	1.92	0.52
2:B:88:TYR:CG	2:B:103:LEU:HD23	2.45	0.52
1:A:4:ASN:HB2	1:A:6:ARG:HE	1.75	0.51
2:B:225:ILE:C	2:B:226:GLN:HG3	2.30	0.51
1:A:51:PHE:CE2	1:A:209:GLU:HG3	2.45	0.51
1:A:190:GLN:C	1:A:190:GLN:NE2	2.63	0.51
1:A:143:MET:CE	1:A:147:LEU:HD21	2.40	0.51
1:A:250:MET:HA	1:A:250:MET:CE	2.40	0.51
2:B:46:ASN:HB2	2:B:47:PRO:CD	2.40	0.51
2:B:15:MET:HB2	2:B:63:LEU:HD12	1.92	0.51
2:B:36:LEU:HD12	2:B:36:LEU:N	2.26	0.51
2:B:22:LYS:HG3	2:B:60:VAL:HG21	1.93	0.51
2:B:126:VAL:HG13	2:B:129:LEU:HD12	1.93	0.51
1:A:138:GLU:O	1:A:142:ILE:HG12	2.11	0.50
1:A:112:LEU:C	1:A:114:LYS:N	2.64	0.50
2:B:281:ILE:N	2:B:281:ILE:HD12	2.25	0.50
1:A:273:ILE:HG12	1:A:287:VAL:HG23	1.93	0.50
2:B:222:PRO:HG2	2:B:223:VAL:H	1.76	0.50

Continued on next page...

Continued from previous page...

Atom-1	Atom-2	Interatomic distance (Å)	Clash overlap (Å)
2:B:175:PHE:HA	2:B:178:ILE:HB	1.93	0.50
1:A:293:ILE:O	1:A:294:PRO:C	2.49	0.50
2:B:144:ARG:HA	2:B:147:GLU:OE2	2.11	0.50
1:A:188:ASN:OD1	1:A:188:ASN:N	2.44	0.50
2:B:121:VAL:HG11	2:B:161:PHE:CD2	2.46	0.50
1:A:31:SER:HB3	1:A:255:GLN:OE1	2.11	0.50
1:A:65:GLN:HB2	1:A:68:PHE:CD2	2.47	0.50
1:A:17:SER:HA	1:A:92:ASP:HB2	1.94	0.50
2:B:28:VAL:HG12	2:B:172:TYR:OH	2.11	0.50
2:B:87:VAL:HA	2:B:120:GLU:O	2.12	0.50
1:A:67:VAL:CG2	1:A:68:PHE:N	2.74	0.50
1:A:26:ILE:HD12	1:A:26:ILE:N	2.27	0.49
1:A:190:GLN:NE2	1:A:191:SER:N	2.56	0.49
1:A:150:THR:O	1:A:153:GLU:HG2	2.12	0.49
2:B:164:THR:HA	2:B:170:SER:HB2	1.94	0.49
2:B:205:ALA:O	2:B:218:THR:HB	2.12	0.49
2:B:77:GLU:HB2	2:B:109:TYR:OH	2.12	0.49
2:B:206:PHE:CD1	2:B:218:THR:HG21	2.48	0.49
2:B:298:PRO:CB	2:B:301:THR:HG23	2.43	0.49
2:B:114:ASN:C	2:B:114:ASN:ND2	2.66	0.49
1:A:125:LEU:O	1:A:128:MET:HG2	2.13	0.48
2:B:67:LEU:HD13	2:B:102:ASN:CG	2.33	0.48
1:A:47:SER:OG	1:A:59:LEU:HB3	2.13	0.48
2:B:201:LYS:HA	2:B:201:LYS:CE	2.23	0.48
1:A:255:GLN:O	1:A:258:THR:CG2	2.57	0.48
1:A:195:LYS:O	1:A:199:ILE:CG2	2.62	0.48
1:A:293:ILE:O	1:A:295:GLN:N	2.46	0.48
2:B:66:GLN:OE1	2:B:66:GLN:HA	2.12	0.48
1:A:159:LEU:HD23	1:A:159:LEU:H	1.78	0.48
2:B:7:ASP:O	2:B:53:SER:HB2	2.14	0.48
2:B:234:PHE:CD2	2:B:281:ILE:HG22	2.48	0.48
2:B:176:SER:HB3	2:B:215:TYR:CE2	2.48	0.48
1:A:69:MET:HA	1:A:72:TYR:CD2	2.49	0.48
1:A:7:LYS:CG	1:A:182:LEU:HD13	2.43	0.48
2:B:108:GLU:HG2	2:B:112:LYS:HE3	1.96	0.48
1:A:123:VAL:O	1:A:124:LEU:HD12	2.13	0.48
1:A:6:ARG:HA	1:A:56:THR:HG22	1.95	0.48
2:B:131:GLU:C	2:B:133:PHE:N	2.67	0.48
2:B:138:GLN:HE21	2:B:142:MET:HE2	1.77	0.48
2:B:93:GLN:HE21	2:B:125:LYS:HB3	1.78	0.48
2:B:235:ILE:O	2:B:239:ILE:HG12	2.14	0.48

Continued on next page...

Continued from previous page...

Atom-1	Atom-2	Interatomic distance (Å)	Clash overlap (Å)
2:B:79:LEU:O	2:B:80:PHE:C	2.50	0.48
1:A:11:LEU:HD21	1:A:19:LYS:O	2.13	0.48
1:A:301:ASN:O	1:A:304:LYS:HG3	2.14	0.47
1:A:113:ARG:CG	1:A:114:LYS:HG3	2.43	0.47
2:B:226:GLN:C	2:B:228:TYR:H	2.16	0.47
2:B:64:PRO:O	2:B:65:GLY:C	2.51	0.47
1:A:191:SER:O	1:A:195:LYS:HG3	2.15	0.47
2:B:24:SER:O	2:B:28:VAL:HG22	2.14	0.47
1:A:303:LYS:HA	1:A:306:LYS:CE	2.45	0.47
1:A:210:ARG:HH11	1:A:210:ARG:HG2	1.79	0.47
1:A:9:LEU:HD21	1:A:182:LEU:HD11	1.96	0.47
2:B:217:SER:C	2:B:218:THR:CG2	2.83	0.47
2:B:176:SER:HB3	2:B:215:TYR:CZ	2.49	0.47
1:A:267:LEU:HA	2:B:272:VAL:O	2.14	0.47
1:A:183:ILE:HG21	1:A:186:MET:CE	2.44	0.47
2:B:139:ARG:HD2	2:B:139:ARG:O	2.15	0.47
1:A:258:THR:O	1:A:261:LYS:HG3	2.15	0.47
1:A:258:THR:OG1	1:A:259:LYS:N	2.48	0.47
2:B:126:VAL:CG1	2:B:126:VAL:O	2.63	0.47
1:A:10:LEU:HB3	1:A:12:MET:HE2	1.97	0.47
2:B:302:ASP:O	2:B:306:CYS:HB2	2.15	0.47
2:B:47:PRO:HB3	2:B:49:LEU:HD23	1.96	0.46
1:A:23:ARG:HD2	1:A:47:SER:OG	2.14	0.46
1:A:14:ARG:CD	1:A:15:SER:N	2.71	0.46
2:B:213:LYS:HD2	2:B:232:SER:OG	2.14	0.46
1:A:294:PRO:HG3	1:A:297:LEU:HD12	1.98	0.46
2:B:216:VAL:O	2:B:217:SER:HB2	2.16	0.46
2:B:108:GLU:O	2:B:112:LYS:HG3	2.15	0.46
1:A:210:ARG:NH1	1:A:210:ARG:HG2	2.30	0.46
2:B:37:ASP:O	2:B:41:LEU:HG	2.15	0.46
2:B:97:ILE:HG12	2:B:144:ARG:HH11	1.80	0.46
1:A:279:SER:C	1:A:281:ASN:H	2.18	0.46
2:B:228:TYR:CD1	2:B:228:TYR:C	2.89	0.46
2:B:42:GLU:O	2:B:43:SER:C	2.53	0.46
1:A:287:VAL:O	1:A:287:VAL:CG1	2.63	0.46
2:B:194:ASP:OD2	2:B:220:SER:HB3	2.16	0.46
1:A:24:SER:O	1:A:30:TYR:HB2	2.16	0.46
1:A:98:VAL:O	1:A:101:ASP:HB2	2.16	0.46
2:B:44:THR:HG23	2:B:44:THR:O	2.17	0.45
2:B:173:GLU:HB2	2:B:228:TYR:CD1	2.51	0.45
2:B:67:LEU:HD13	2:B:102:ASN:HB3	1.99	0.45

Continued on next page...

Continued from previous page...

Atom-1	Atom-2	Interatomic distance (Å)	Clash overlap (Å)
1:A:113:ARG:HG2	1:A:114:LYS:HG3	1.97	0.45
2:B:286:MET:HE2	2:B:317:PHE:CD2	2.52	0.45
1:A:67:VAL:HG22	1:A:68:PHE:N	2.31	0.45
2:B:66:GLN:HE22	2:B:98:ASN:HB2	1.82	0.45
2:B:36:LEU:HG	2:B:216:VAL:HG22	1.98	0.45
1:A:132:GLN:NE2	1:A:133:LEU:H	2.13	0.45
2:B:39:LEU:C	2:B:39:LEU:HD23	2.37	0.45
1:A:271:ASN:HB3	1:A:291:MET:O	2.17	0.45
2:B:67:LEU:HD12	2:B:67:LEU:N	2.31	0.45
2:B:77:GLU:CG	2:B:78:ARG:N	2.80	0.45
2:B:225:ILE:HD13	2:B:227:MET:HG3	1.99	0.45
2:B:83:VAL:HG13	2:B:85:ALA:O	2.17	0.45
1:A:112:LEU:C	1:A:114:LYS:H	2.18	0.45
2:B:149:LEU:HD22	2:B:154:LEU:CD1	2.48	0.44
1:A:6:ARG:HA	1:A:56:THR:CG2	2.48	0.44
2:B:20:CYS:O	2:B:125:LYS:HE3	2.17	0.44
1:A:207:LEU:HD13	1:A:282:MET:CE	2.47	0.44
2:B:305:SER:O	2:B:309:VAL:HG23	2.18	0.44
1:A:92:ASP:OD2	1:A:127:LYS:HD2	2.18	0.44
1:A:146:ASN:H	1:A:146:ASN:HD22	1.64	0.44
2:B:8:SER:HA	2:B:54:THR:O	2.18	0.44
2:B:207:LEU:HD12	2:B:207:LEU:HA	1.81	0.44
2:B:165:SER:HB3	2:B:168:ASP:HB2	1.99	0.44
2:B:200:SER:OG	2:B:202:ILE:HB	2.18	0.44
1:A:86:VAL:CG1	1:A:87:LEU:N	2.80	0.44
1:A:209:GLU:OE1	1:A:211:THR:HB	2.18	0.44
1:A:294:PRO:O	1:A:295:GLN:C	2.55	0.44
1:A:199:ILE:O	1:A:199:ILE:HG13	2.18	0.44
1:A:241:LYS:HA	1:A:244:GLU:OE2	2.18	0.44
2:B:197:ILE:HG22	2:B:202:ILE:HG21	2.00	0.43
2:B:131:GLU:C	2:B:133:PHE:H	2.21	0.43
1:A:43:ASP:CG	1:A:44:VAL:H	2.20	0.43
1:A:6:ARG:O	1:A:7:LYS:HD2	2.18	0.43
2:B:286:MET:HE2	2:B:317:PHE:CE2	2.53	0.43
1:A:206:ILE:HB	1:A:208:PHE:HE1	1.84	0.43
1:A:194:LYS:O	1:A:197:LYS:HB3	2.18	0.43
1:A:126:HIS:O	1:A:127:LYS:HB2	2.18	0.43
1:A:184:PRO:HG2	1:A:185:ASN:H	1.83	0.43
2:B:104:ALA:HA	2:B:149:LEU:HD21	2.01	0.43
2:B:138:GLN:O	2:B:141:ILE:N	2.52	0.43
1:A:305:ALA:O	1:A:309:PHE:HD1	2.02	0.43

Continued on next page...

Continued from previous page...

Atom-1	Atom-2	Interatomic distance (Å)	Clash overlap (Å)
1:A:174:ALA:O	1:A:178:ILE:HG13	2.19	0.43
1:A:82:GLN:OE1	1:A:82:GLN:HA	2.19	0.43
1:A:294:PRO:HG2	1:A:297:LEU:HB2	2.00	0.43
2:B:217:SER:C	2:B:218:THR:HG22	2.39	0.43
2:B:140:ASP:O	2:B:144:ARG:HG3	2.19	0.43
1:A:69:MET:O	1:A:73:PHE:CD2	2.72	0.42
1:A:299:LEU:O	1:A:302:ILE:HB	2.19	0.42
2:B:166:ILE:HA	2:B:171:ILE:CD1	2.49	0.42
1:A:171:LEU:HD23	1:A:175:TRP:CD1	2.54	0.42
2:B:150:LEU:HG	2:B:155:ASP:HB3	2.01	0.42
1:A:262:SER:OG	2:B:276:ALA:HB3	2.19	0.42
1:A:302:ILE:HG22	1:A:303:LYS:N	2.34	0.42
2:B:189:LEU:HA	2:B:189:LEU:HD12	1.91	0.42
1:A:173:LYS:HB2	1:A:244:GLU:CG	2.34	0.42
1:A:278:LEU:HD11	1:A:284:CYS:SG	2.60	0.42
2:B:280:ILE:HB	2:B:296:ILE:HB	2.02	0.42
1:A:102:ILE:O	1:A:105:PHE:HB3	2.20	0.42
1:A:7:LYS:HG2	1:A:182:LEU:HD13	2.00	0.42
1:A:62:CYS:O	1:A:63:GLY:C	2.57	0.42
1:A:104:ILE:O	1:A:107:LYS:HB2	2.20	0.42
2:B:183:ILE:HB	2:B:186:LEU:HD13	2.01	0.42
1:A:200:MET:HE1	1:A:298:VAL:HG13	2.02	0.42
2:B:9:LYS:O	2:B:9:LYS:HG3	2.18	0.42
2:B:182:LEU:HA	2:B:182:LEU:HD23	1.86	0.42
1:A:259:LYS:NZ	2:B:226:GLN:HB2	2.35	0.42
2:B:42:GLU:HA	2:B:45:SER:HB2	2.01	0.42
1:A:127:LYS:HG2	3:A:400:GTP:C6	2.55	0.42
2:B:111:TYR:CD1	2:B:115:PRO:HA	2.54	0.42
1:A:306:LYS:O	1:A:307:GLU:C	2.58	0.41
2:B:39:LEU:HA	2:B:43:SER:CB	2.49	0.41
1:A:279:SER:CB	1:A:310:GLN:HA	2.50	0.41
2:B:33:MET:SD	2:B:179:VAL:HG21	2.59	0.41
1:A:63:GLY:HA2	3:A:400:GTP:O1G	2.19	0.41
1:A:239:ASP:O	1:A:242:ARG:HB3	2.20	0.41
2:B:286:MET:CE	2:B:317:PHE:CD2	3.03	0.41
2:B:302:ASP:C	2:B:302:ASP:OD1	2.58	0.41
2:B:225:ILE:HD12	2:B:225:ILE:N	2.33	0.41
2:B:67:LEU:O	2:B:70:PHE:O	2.38	0.41
1:A:296:GLU:H	1:A:296:GLU:HG3	1.33	0.41
1:A:81:PHE:CD1	1:A:111:GLN:HB3	2.55	0.41
2:B:174:ALA:O	2:B:178:ILE:HG13	2.21	0.41

Continued on next page...

Continued from previous page...

Atom-1	Atom-2	Interatomic distance (Å)	Clash overlap (Å)
1:A:197:LYS:O	1:A:201:ASN:N	2.54	0.41
2:B:238:THR:CG2	2:B:269:LEU:HD11	2.51	0.41
2:B:63:LEU:HD22	2:B:67:LEU:HD11	2.01	0.41
2:B:98:ASN:O	2:B:101:THR:HB	2.20	0.41
2:B:138:GLN:NE2	2:B:142:MET:CE	2.81	0.41
1:A:204:GLU:HB2	1:A:220:ASN:HA	2.02	0.41
2:B:13:LEU:HA	2:B:59:ALA:O	2.20	0.41
2:B:215:TYR:C	2:B:215:TYR:CD1	2.94	0.41
1:A:91:PHE:N	1:A:91:PHE:CD1	2.89	0.41
2:B:185:GLU:OE1	2:B:185:GLU:N	2.48	0.41
2:B:28:VAL:CG1	2:B:172:TYR:OH	2.68	0.41
1:A:10:LEU:HD11	1:A:84:VAL:HG21	2.02	0.41
1:A:112:LEU:O	1:A:114:LYS:N	2.54	0.41
1:A:65:GLN:O	1:A:66:ASP:C	2.59	0.41
2:B:39:LEU:O	2:B:43:SER:HB2	2.21	0.41
1:A:158:ASN:N	1:A:158:ASN:ND2	2.69	0.41
2:B:95:GLU:OE1	2:B:96:TYR:N	2.48	0.41
1:A:193:LEU:HD11	1:A:205:ILE:HG22	2.03	0.41
1:A:76:GLN:HB2	1:A:79:HIS:HB3	2.03	0.40
2:B:300:GLY:O	2:B:301:THR:C	2.59	0.40
1:A:158:ASN:N	1:A:158:ASN:HD22	2.18	0.40
2:B:47:PRO:O	2:B:48:SER:C	2.60	0.40
1:A:33:PHE:HB3	1:A:167:TRP:HH2	1.86	0.40
2:B:182:LEU:CB	2:B:183:ILE:HD12	2.37	0.40
1:A:256:SER:O	2:B:230:VAL:HG22	2.21	0.40
1:A:93:VAL:HG11	1:A:131:VAL:HG21	2.02	0.40
2:B:79:LEU:C	2:B:79:LEU:HD22	2.42	0.40
1:A:155:GLY:O	1:A:157:PRO:CD	2.68	0.40

There are no symmetry-related clashes.

5.3 Torsion angles [i](#)

5.3.1 Protein backbone [i](#)

In the following table, the Percentiles column shows the percent Ramachandran outliers of the chain as a percentile score with respect to all X-ray entries followed by that with respect to entries of similar resolution.

The Analysed column shows the number of residues for which the backbone conformation was analysed, and the total number of residues.

Mol	Chain	Analysed	Favoured	Allowed	Outliers	Percentiles	
1	A	287/310 (93%)	251 (88%)	31 (11%)	5 (2%)	11	43
2	B	300/341 (88%)	253 (84%)	41 (14%)	6 (2%)	9	38
All	All	587/651 (90%)	504 (86%)	72 (12%)	11 (2%)	10	40

All (11) Ramachandran outliers are listed below:

Mol	Chain	Res	Type
1	A	157	PRO
2	B	46	ASN
2	B	65	GLY
2	B	223	VAL
2	B	298	PRO
1	A	294	PRO
2	B	288	ARG
1	A	156	PHE
1	A	66	ASP
1	A	184	PRO
2	B	210	VAL

5.3.2 Protein sidechains ⓘ

In the following table, the Percentiles column shows the percent sidechain outliers of the chain as a percentile score with respect to all X-ray entries followed by that with respect to entries of similar resolution.

The Analysed column shows the number of residues for which the sidechain conformation was analysed, and the total number of residues.

Mol	Chain	Analysed	Rotameric	Outliers	Percentiles	
1	A	273/291 (94%)	244 (89%)	29 (11%)	8	31
2	B	277/310 (89%)	237 (86%)	40 (14%)	4	17
All	All	550/601 (92%)	481 (88%)	69 (12%)	6	22

All (69) residues with a non-rotameric sidechain are listed below:

Mol	Chain	Res	Type
1	A	5	ASN
1	A	6	ARG
1	A	7	LYS
1	A	14	ARG
1	A	15	SER

Continued on next page...

Continued from previous page...

Mol	Chain	Res	Type
1	A	24	SER
1	A	41	THR
1	A	50	ARG
1	A	52	LEU
1	A	76	GLN
1	A	77	LYS
1	A	78	ASP
1	A	111	GLN
1	A	156	PHE
1	A	185	ASN
1	A	186	MET
1	A	187	SER
1	A	188	ASN
1	A	190	GLN
1	A	198	GLU
1	A	199	ILE
1	A	204	GLU
1	A	213	PHE
1	A	251	LYS
1	A	255	GLN
1	A	296	GLU
1	A	302	ILE
1	A	306	LYS
1	A	308	PHE
2	B	9	LYS
2	B	28	VAL
2	B	34	GLN
2	B	41	LEU
2	B	42	GLU
2	B	49	LEU
2	B	50	GLU
2	B	60	VAL
2	B	63	LEU
2	B	70	PHE
2	B	75	ASP
2	B	78	ARG
2	B	79	LEU
2	B	94	ASP
2	B	108	GLU
2	B	113	VAL
2	B	114	ASN
2	B	119	ILE

Continued on next page...

Continued from previous page...

Mol	Chain	Res	Type
2	B	127	ASP
2	B	145	THR
2	B	150	LEU
2	B	152	LEU
2	B	154	LEU
2	B	155	ASP
2	B	157	VAL
2	B	186	LEU
2	B	195	ASN
2	B	201	LYS
2	B	218	THR
2	B	224	ASP
2	B	225	ILE
2	B	226	GLN
2	B	266	ARG
2	B	268	GLU
2	B	269	LEU
2	B	288	ARG
2	B	290	LEU
2	B	301	THR
2	B	324	ILE
2	B	325	TRP

Some sidechains can be flipped to improve hydrogen bonding and reduce clashes. All (19) such sidechains are listed below:

Mol	Chain	Res	Type
1	A	4	ASN
1	A	76	GLN
1	A	79	HIS
1	A	89	HIS
1	A	132	GLN
1	A	146	ASN
1	A	158	ASN
1	A	185	ASN
1	A	190	GLN
1	A	248	ASN
1	A	270	ASN
1	A	292	ASN
1	A	310	GLN
2	B	32	ASN
2	B	68	ASN
2	B	93	GLN

Continued on next page...

Continued from previous page...

Mol	Chain	Res	Type
2	B	114	ASN
2	B	138	GLN
2	B	285	GLN

5.3.3 RNA ⓘ

There are no RNA molecules in this entry.

5.4 Non-standard residues in protein, DNA, RNA chains ⓘ

There are no non-standard protein/DNA/RNA residues in this entry.

5.5 Carbohydrates ⓘ

There are no carbohydrates in this entry.

5.6 Ligand geometry ⓘ

Of 3 ligands modelled in this entry, 1 is monoatomic - leaving 2 for Mogul analysis.

In the following table, the Counts columns list the number of bonds (or angles) for which Mogul statistics could be retrieved, the number of bonds (or angles) that are observed in the model and the number of bonds (or angles) that are defined in the chemical component dictionary. The Link column lists molecule types, if any, to which the group is linked. The Z score for a bond length (or angle) is the number of standard deviations the observed value is removed from the expected value. A bond length (or angle) with $|Z| > 2$ is considered an outlier worth inspection. RMSZ is the root-mean-square of all Z scores of the bond lengths (or angles).

Mol	Type	Chain	Res	Link	Bond lengths			Bond angles		
					Counts	RMSZ	# Z > 2	Counts	RMSZ	# Z > 2
3	GTP	A	400	4	25,34,34	1.17	1 (4%)	34,54,54	3.16	17 (50%)
5	GDP	B	400	-	23,30,30	1.29	4 (17%)	30,47,47	2.02	5 (16%)

In the following table, the Chirals column lists the number of chiral outliers, the number of chiral centers analysed, the number of these observed in the model and the number defined in the chemical component dictionary. Similar counts are reported in the Torsion and Rings columns. '-' means no outliers of that kind were identified.

Mol	Type	Chain	Res	Link	Chirals	Torsions	Rings
3	GTP	A	400	4	-	0/18/38/38	0/3/3/3

Continued on next page...

Continued from previous page...

Mol	Type	Chain	Res	Link	Chirals	Torsions	Rings
5	GDP	B	400	-	-	0/12/32/32	0/3/3/3

All (5) bond length outliers are listed below:

Mol	Chain	Res	Type	Atoms	Z	Observed(Å)	Ideal(Å)
5	B	400	GDP	C5-C4	2.41	1.45	1.40
5	B	400	GDP	C6-N1	2.69	1.38	1.33
5	B	400	GDP	C4-N3	2.75	1.40	1.35
5	B	400	GDP	C6-C5	2.94	1.47	1.41
3	A	400	GTP	C6-N1	3.96	1.40	1.33

All (22) bond angle outliers are listed below:

Mol	Chain	Res	Type	Atoms	Z	Observed(°)	Ideal(°)
3	A	400	GTP	O3G-PG-O1G	-8.68	82.64	110.58
3	A	400	GTP	N3-C2-N1	-7.13	116.59	127.44
3	A	400	GTP	O3G-PG-O2G	-6.23	83.65	107.38
5	B	400	GDP	C5-C6-N1	-5.35	116.27	123.59
3	A	400	GTP	O3G-PG-O3B	-4.70	83.75	105.09
3	A	400	GTP	O3'-C3'-C4'	-4.70	96.94	111.05
5	B	400	GDP	C6-C5-C4	-4.29	115.77	120.90
3	A	400	GTP	PA-O3A-PB	-4.14	121.09	132.73
5	B	400	GDP	N3-C2-N1	-3.25	122.49	127.44
3	A	400	GTP	PB-O3B-PG	-3.22	121.88	132.67
5	B	400	GDP	C1'-N9-C4	-2.92	122.53	126.94
3	A	400	GTP	C1'-N9-C4	-2.76	122.77	126.94
3	A	400	GTP	C6-C5-C4	-2.74	117.63	120.90
3	A	400	GTP	C4-C5-N7	-2.16	107.49	109.48
3	A	400	GTP	O2G-PG-O1G	2.04	117.15	110.58
3	A	400	GTP	C6-N1-C2	2.08	118.83	115.94
3	A	400	GTP	O2G-PG-O3B	2.28	115.45	105.09
3	A	400	GTP	O2A-PA-O3A	2.65	117.10	105.09
3	A	400	GTP	C5'-C4'-C3'	3.59	129.47	115.21
3	A	400	GTP	N2-C2-N1	3.84	123.55	117.20
3	A	400	GTP	C4'-O4'-C1'	4.52	114.68	109.72
5	B	400	GDP	C6-N1-C2	6.58	125.07	115.94

There are no chirality outliers.

There are no torsion outliers.

There are no ring outliers.

2 monomers are involved in 6 short contacts:

Mol	Chain	Res	Type	Clashes	Symm-Clashes
3	A	400	GTP	4	0
5	B	400	GDP	2	0

5.7 Other polymers [i](#)

There are no such residues in this entry.

5.8 Polymer linkage issues [i](#)

There are no chain breaks in this entry.

6 Fit of model and data [i](#)

6.1 Protein, DNA and RNA chains [i](#)

In the following table, the column labelled ‘#RSRZ> 2’ contains the number (and percentage) of RSRZ outliers, followed by percent RSRZ outliers for the chain as percentile scores relative to all X-ray entries and entries of similar resolution. The OWAB column contains the minimum, median, 95th percentile and maximum values of the occupancy-weighted average B-factor per residue. The column labelled ‘Q< 0.9’ lists the number of (and percentage) of residues with an average occupancy less than 0.9.

Mol	Chain	Analysed	<RSRZ>	#RSRZ>2	OWAB(Å ²)	Q<0.9
1	A	291/310 (93%)	0.06	4 (1%) 78 60	55, 82, 109, 126	0
2	B	304/341 (89%)	0.06	4 (1%) 79 62	56, 88, 116, 129	0
All	All	595/651 (91%)	0.06	8 (1%) 79 62	55, 85, 114, 129	0

All (8) RSRZ outliers are listed below:

Mol	Chain	Res	Type	RSRZ
2	B	166	ILE	2.7
1	A	291	MET	2.6
1	A	289	LYS	2.2
1	A	89	HIS	2.2
1	A	203	LEU	2.2
2	B	90	ILE	2.2
2	B	175	PHE	2.2
2	B	123	ILE	2.0

6.2 Non-standard residues in protein, DNA, RNA chains [i](#)

There are no non-standard protein/DNA/RNA residues in this entry.

6.3 Carbohydrates [i](#)

There are no carbohydrates in this entry.

6.4 Ligands [i](#)

In the following table, the Atoms column lists the number of modelled atoms in the group and the number defined in the chemical component dictionary. LLDF column lists the quality of electron density of the group with respect to its neighbouring residues in protein, DNA or RNA chains.

The B-factors column lists the minimum, median, 95th percentile and maximum values of B factors of atoms in the group. The column labelled 'Q< 0.9' lists the number of atoms with occupancy less than 0.9.

Mol	Type	Chain	Res	Atoms	RSCC	RSR	LLDF	B-factors(Å ²)	Q<0.9
3	GTP	A	400	32/32	0.95	0.21	0.17	77,80,92,92	0
5	GDP	B	400	28/28	0.94	0.16	-0.97	100,103,104,106	0
4	MG	A	500	1/1	0.89	0.17	-	38,38,38,38	0

6.5 Other polymers [i](#)

There are no such residues in this entry.