



Full wwPDB X-ray Structure Validation Report ⓘ

Feb 1, 2016 – 07:26 AM GMT

PDB ID : 3AST
Title : Crystal structure of P domain Q389N mutant from Norovirus Funabashi258 stain in the complex with Lewis-b
Authors : Kubota, T.; Kumagai, A.; Itoh, H.; Furukawa, S.; Narimatsu, H.; Wakita, T.; Ishii, K.; Takeda, N.; Someya, Y.; Shirato, H.
Deposited on : 2010-12-17
Resolution : 1.40 Å(reported)

This is a Full wwPDB X-ray Structure Validation Report for a publicly released PDB entry.
We welcome your comments at validation@mail.wwpdb.org
A user guide is available at
<http://wwpdb.org/validation/2016/XrayValidationReportHelp>
with specific help available everywhere you see the ⓘ symbol.

The following versions of software and data (see [references ⓘ](#)) were used in the production of this report:

MolProbity : 4.02b-467
Mogul : 1.7 (RC4), CSD as536be (2015)
Xtriage (Phenix) : 1.9-1692
EDS : rb-20026688
Percentile statistics : 20151230.v01 (using entries in the PDB archive December 30th 2015)
Refmac : 5.8.0135
CCP4 : 6.5.0
Ideal geometry (proteins) : Engh & Huber (2001)
Ideal geometry (DNA, RNA) : Parkinson et al. (1996)
Validation Pipeline (wwPDB-VP) : trunk26865

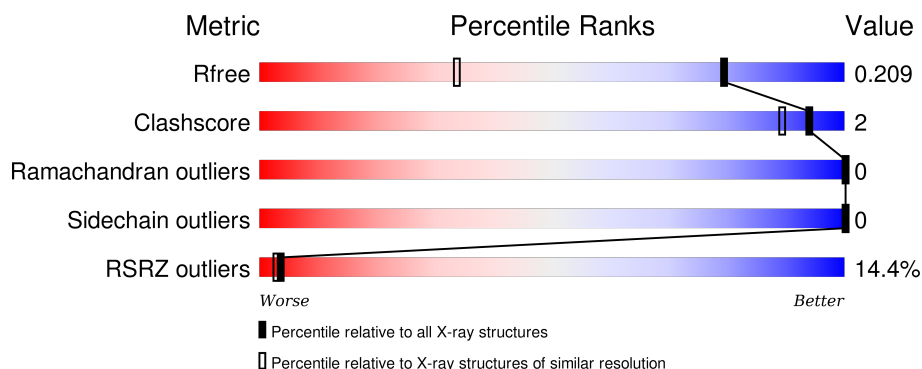
1 Overall quality at a glance

The following experimental techniques were used to determine the structure:

X-RAY DIFFRACTION

The reported resolution of this entry is 1.40 Å.

Percentile scores (ranging between 0-100) for global validation metrics of the entry are shown in the following graphic. The table shows the number of entries on which the scores are based.



Metric	Whole archive (#Entries)	Similar resolution (#Entries, resolution range(Å))
R_{free}	91344	1199 (1.40-1.40)
Clashscore	102246	1295 (1.40-1.40)
Ramachandran outliers	100387	1259 (1.40-1.40)
Sidechain outliers	100360	1258 (1.40-1.40)
RSRZ outliers	91569	1198 (1.40-1.40)

The table below summarises the geometric issues observed across the polymeric chains and their fit to the electron density. The red, orange, yellow and green segments on the lower bar indicate the fraction of residues that contain outliers for ≥ 3 , 2, 1 and 0 types of geometric quality criteria. A grey segment represents the fraction of residues that are not modelled. The numeric value for each fraction is indicated below the corresponding segment, with a dot representing fractions $\leq 5\%$. The upper red bar (where present) indicates the fraction of residues that have poor fit to the electron density. The numeric value is given above the bar.

Mol	Chain	Length	Quality of chain
1	A	326	<div> <div>14%</div> <div> <div></div> <div>91%</div> <div>5%</div> </div> </div>
1	B	326	<div> <div>13%</div> <div> <div></div> <div>87%</div> <div>6%</div> <div>7%</div> </div> </div>

2 Entry composition

There are 5 unique types of molecules in this entry. The entry contains 5361 atoms, of which 0 are hydrogens and 0 are deuteriums.

In the tables below, the ZeroOcc column contains the number of atoms modelled with zero occupancy, the AltConf column contains the number of residues with at least one atom in alternate conformation and the Trace column contains the number of residues modelled with at most 2 atoms.

- Molecule 1 is a protein called Capsid protein.

Mol	Chain	Residues	Atoms					ZeroOcc	AltConf	Trace
1	A	311	Total	C	N	O	S	0	1	0
			2386	1526	402	449	9			
1	B	302	Total	C	N	O	S	0	3	0
			2331	1494	393	435	9			

There are 12 discrepancies between the modelled and reference sequences:

Chain	Residue	Modelled	Actual	Comment	Reference
A	216	GLY	-	EXPRESSION TAG	UNP Q8JW44
A	217	PRO	-	EXPRESSION TAG	UNP Q8JW44
A	218	LEU	-	EXPRESSION TAG	UNP Q8JW44
A	219	GLY	-	EXPRESSION TAG	UNP Q8JW44
A	220	SER	-	EXPRESSION TAG	UNP Q8JW44
A	389	ASN	GLN	ENGINEERED MUTATION	UNP Q8JW44
B	216	GLY	-	EXPRESSION TAG	UNP Q8JW44
B	217	PRO	-	EXPRESSION TAG	UNP Q8JW44
B	218	LEU	-	EXPRESSION TAG	UNP Q8JW44
B	219	GLY	-	EXPRESSION TAG	UNP Q8JW44
B	220	SER	-	EXPRESSION TAG	UNP Q8JW44
B	389	ASN	GLN	ENGINEERED MUTATION	UNP Q8JW44

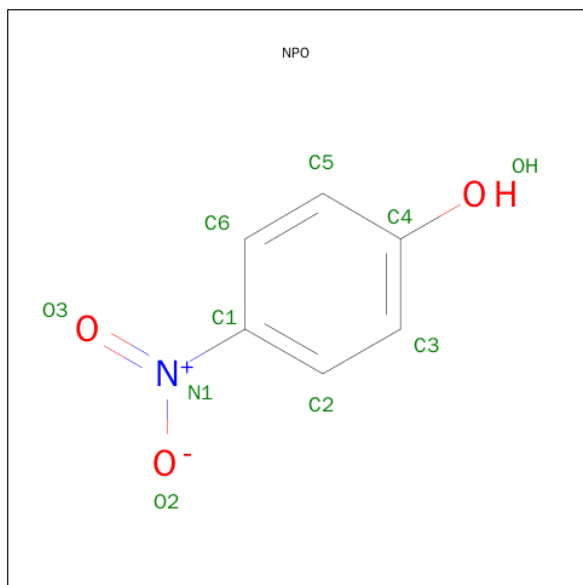
- Molecule 2 is SODIUM ION (three-letter code: NA) (formula: Na).

Mol	Chain	Residues	Atoms		ZeroOcc	AltConf
2	B	1	Total	Na	0	0
			1	1		
2	A	1	Total	Na	0	0
			1	1		

- Molecule 3 is a polymer of unknown type called SUGAR (4-MER).

Mol	Chain	Residues	Atoms				ZeroOcc	AltConf
3	A	4	Total	C	N	O	0	0
			45	26	1	18		
3	B	4	Total	C	N	O	0	0
			45	26	1	18		

- Molecule 4 is P-NITROPHENOL (three-letter code: NPO) (formula: $C_6H_5NO_3$).



Mol	Chain	Residues	Atoms				ZeroOcc	AltConf
4	A	1	Total	C	N	O	0	0
			10	6	1	3		
4	B	1	Total	C	N	O	0	0
			10	6	1	3		

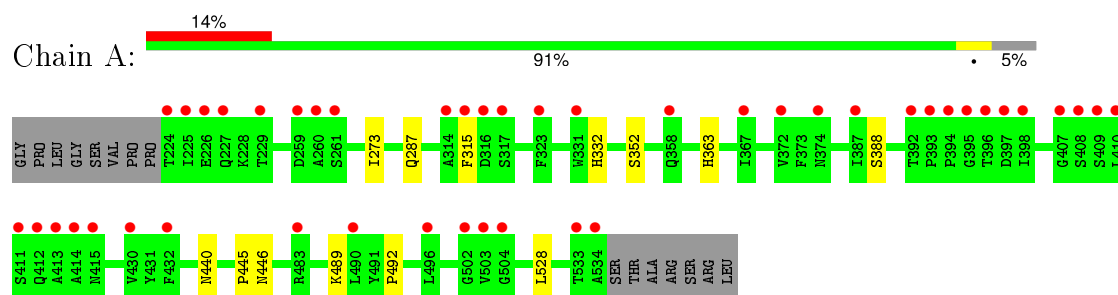
- Molecule 5 is water.

Mol	Chain	Residues	Atoms		ZeroOcc	AltConf
5	A	277	Total	O	0	0
			277	277		
5	B	255	Total	O	0	0
			255	255		

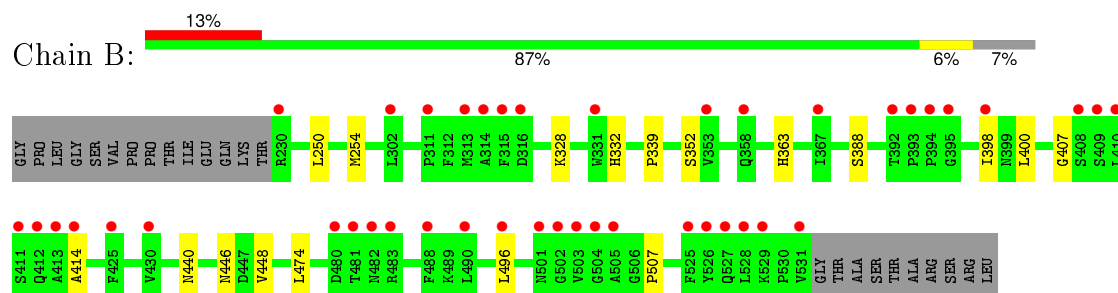
3 Residue-property plots [i](#)

These plots are drawn for all protein, RNA and DNA chains in the entry. The first graphic for a chain summarises the proportions of errors displayed in the second graphic. The second graphic shows the sequence view annotated by issues in geometry and electron density. Residues are color-coded according to the number of geometric quality criteria for which they contain at least one outlier: green = 0, yellow = 1, orange = 2 and red = 3 or more. A red dot above a residue indicates a poor fit to the electron density ($\text{RSRZ} > 2$). Stretches of 2 or more consecutive residues without any outlier are shown as a green connector. Residues present in the sample, but not in the model, are shown in grey.

• Molecule 1: Capsid protein



• Molecule 1: Capsid protein



4 Data and refinement statistics

Property	Value	Source
Space group	P 31	Depositor
Cell constants a, b, c, α , β , γ	74.97Å 74.97Å 107.25Å 90.00° 90.00° 120.00°	Depositor
Resolution (Å)	23.92 – 1.40 23.92 – 1.40	Depositor EDS
% Data completeness (in resolution range)	94.8 (23.92-1.40) 94.8 (23.92-1.40)	Depositor EDS
R_{merge}	0.08	Depositor
R_{sym}	(Not available)	Depositor
$\langle I/\sigma(I) \rangle$ ¹	9.62 (at 1.40Å)	Xtriage
Refinement program	REFMAC 5.5.0109	Depositor
R, R_{free}	0.197 , 0.212 0.194 , 0.209	Depositor DCC
R_{free} test set	6268 reflections (5.28%)	DCC
Wilson B-factor (Å ²)	13.1	Xtriage
Anisotropy	0.007	Xtriage
Bulk solvent k_{sol} (e/Å ³), B_{sol} (Å ²)	0.53 , 73.1	EDS
Estimated twinning fraction	0.014 for -h,-k,l 0.029 for h,-h-k,-l 0.021 for -k,-h,-l	Xtriage
L-test for twinning ²	$\langle L \rangle = 0.47$, $\langle L^2 \rangle = 0.30$	Xtriage
Outliers	0 of 124868 reflections	Xtriage
F_o, F_c correlation	0.94	EDS
Total number of atoms	5361	wwPDB-VP
Average B, all atoms (Å ²)	16.0	wwPDB-VP

Xtriage's analysis on translational NCS is as follows: *The largest off-origin peak in the Patterson function is 4.98% of the height of the origin peak. No significant pseudotranslation is detected.*

¹Intensities estimated from amplitudes.

²Theoretical values of $\langle |L| \rangle$, $\langle L^2 \rangle$ for acentric reflections are 0.5, 0.375 respectively for untwinned datasets, and 0.333, 0.2 for perfectly twinned datasets.

5 Model quality

5.1 Standard geometry

Bond lengths and bond angles in the following residue types are not validated in this section: NA, NPO, GAL, NAG, FUC

The Z score for a bond length (or angle) is the number of standard deviations the observed value is removed from the expected value. A bond length (or angle) with $|Z| > 5$ is considered an outlier worth inspection. RMSZ is the root-mean-square of all Z scores of the bond lengths (or angles).

Mol	Chain	Bond lengths		Bond angles	
		RMSZ	# Z >5	RMSZ	# Z >5
1	A	0.33	0/2462	0.51	0/3371
1	B	0.33	0/2414	0.52	0/3306
All	All	0.33	0/4876	0.52	0/6677

There are no bond length outliers.

There are no bond angle outliers.

There are no chirality outliers.

There are no planarity outliers.

5.2 Too-close contacts

In the following table, the Non-H and H(model) columns list the number of non-hydrogen atoms and hydrogen atoms in the chain respectively. The H(added) column lists the number of hydrogen atoms added and optimized by MolProbity. The Clashes column lists the number of clashes within the asymmetric unit, whereas Symm-Clashes lists symmetry related clashes.

Mol	Chain	Non-H	H(model)	H(added)	Clashes	Symm-Clashes
1	A	2386	0	2314	8	0
1	B	2331	0	2259	11	0
2	A	1	0	0	0	0
2	B	1	0	0	0	0
3	A	45	0	40	0	0
3	B	45	0	40	0	0
4	A	10	0	4	0	0
4	B	10	0	4	0	0
5	A	277	0	0	0	0
5	B	255	0	0	0	0
All	All	5361	0	4661	17	0

The all-atom clashscore is defined as the number of clashes found per 1000 atoms (including hydrogen atoms). The all-atom clashscore for this structure is 2.

All (17) close contacts within the same asymmetric unit are listed below, sorted by their clash magnitude.

Atom-1	Atom-2	Interatomic distance (Å)	Clash overlap (Å)
1:B:440:ASN:HD22	1:B:446:ASN:ND2	1.95	0.64
1:B:363[A]:HIS:CE1	1:B:414:ALA:H	2.15	0.63
1:B:254:MET:HG2	1:B:507:PRO:HB2	1.81	0.62
1:B:332:HIS:HE1	1:B:388:SER:OG	1.84	0.60
1:A:332:HIS:HE1	1:A:388:SER:OG	1.84	0.60
1:A:315:PHE:HA	1:A:363:HIS:CE1	2.43	0.53
1:A:287:GLN:HG3	1:B:250:LEU:HD11	1.90	0.53
1:A:440:ASN:HD22	1:A:446:ASN:ND2	2.07	0.52
1:A:273:ILE:HG12	1:A:492:PRO:HA	1.93	0.51
1:A:445:PRO:HG3	1:B:339:PRO:HB2	1.95	0.49
1:B:363[B]:HIS:CD2	1:B:407:GLY:HA2	2.48	0.49
1:A:332:HIS:HD2	1:A:352:SER:OG	1.98	0.46
1:B:332:HIS:HD2	1:B:352:SER:OG	1.99	0.45
1:B:474:LEU:HD12	1:B:496:LEU:HD21	1.99	0.44
1:A:489:LYS:HG3	1:A:528:LEU:HD21	2.02	0.41
1:B:328:LYS:O	1:B:398:ILE:HA	2.21	0.40
1:B:400:LEU:HD13	1:B:448:VAL:HG22	2.04	0.40

There are no symmetry-related clashes.

5.3 Torsion angles ⓘ

5.3.1 Protein backbone ⓘ

In the following table, the Percentiles column shows the percent Ramachandran outliers of the chain as a percentile score with respect to all X-ray entries followed by that with respect to entries of similar resolution.

The Analysed column shows the number of residues for which the backbone conformation was analysed, and the total number of residues.

Mol	Chain	Analysed	Favoured	Allowed	Outliers	Percentiles	
1	A	310/326 (95%)	307 (99%)	3 (1%)	0	100	100
1	B	303/326 (93%)	300 (99%)	3 (1%)	0	100	100
All	All	613/652 (94%)	607 (99%)	6 (1%)	0	100	100

There are no Ramachandran outliers to report.

5.3.2 Protein sidechains ⓘ

In the following table, the Percentiles column shows the percent sidechain outliers of the chain as a percentile score with respect to all X-ray entries followed by that with respect to entries of similar resolution.

The Analysed column shows the number of residues for which the sidechain conformation was analysed, and the total number of residues.

Mol	Chain	Analysed	Rotameric	Outliers	Percentiles	
1	A	266/277 (96%)	266 (100%)	0	100	100
1	B	261/277 (94%)	261 (100%)	0	100	100
All	All	527/554 (95%)	527 (100%)	0	100	100

There are no protein residues with a non-rotameric sidechain to report.

Some sidechains can be flipped to improve hydrogen bonding and reduce clashes. All (13) such sidechains are listed below:

Mol	Chain	Res	Type
1	A	296	ASN
1	A	332	HIS
1	A	375	HIS
1	A	389	ASN
1	A	415	ASN
1	A	446	ASN
1	B	296	ASN
1	B	297	GLN
1	B	332	HIS
1	B	354	GLN
1	B	374	ASN
1	B	415	ASN
1	B	446	ASN

5.3.3 RNA ⓘ

There are no RNA molecules in this entry.

5.4 Non-standard residues in protein, DNA, RNA chains ⓘ

There are no non-standard protein/DNA/RNA residues in this entry.

5.5 Carbohydrates ⓘ

8 carbohydrates are modelled in this entry.

In the following table, the Counts columns list the number of bonds (or angles) for which Mogul statistics could be retrieved, the number of bonds (or angles) that are observed in the model and the number of bonds (or angles) that are defined in the chemical component dictionary. The Link column lists molecule types, if any, to which the group is linked. The Z score for a bond length (or angle) is the number of standard deviations the observed value is removed from the expected value. A bond length (or angle) with $|Z| > 2$ is considered an outlier worth inspection. RMSZ is the root-mean-square of all Z scores of the bond lengths (or angles).

Mol	Type	Chain	Res	Link	Bond lengths			Bond angles		
					Counts	RMSZ	$\# Z > 2$	Counts	RMSZ	$\# Z > 2$
3	NAG	A	1002	3,4	14,14,15	0.49	0	15,19,21	0.72	0
3	GAL	A	1003	3	11,11,12	0.56	0	14,15,17	0.58	0
3	FUC	A	1004	3	10,10,11	0.56	0	14,14,16	0.66	0
3	FUC	A	1005	3	10,10,11	0.59	0	14,14,16	0.74	0
3	NAG	B	1002	3,4	14,14,15	0.50	0	15,19,21	0.61	0
3	GAL	B	1003	3	11,11,12	0.56	0	14,15,17	0.75	1 (7%)
3	FUC	B	1004	3	10,10,11	0.55	0	14,14,16	0.81	0
3	FUC	B	1005	3	10,10,11	0.60	0	14,14,16	0.80	0

In the following table, the Chirals column lists the number of chiral outliers, the number of chiral centers analysed, the number of these observed in the model and the number defined in the chemical component dictionary. Similar counts are reported in the Torsion and Rings columns. '-' means no outliers of that kind were identified.

Mol	Type	Chain	Res	Link	Chirals	Torsions	Rings
3	NAG	A	1002	3,4	-	0/6/23/26	0/1/1/1
3	GAL	A	1003	3	-	0/2/19/22	0/1/1/1
3	FUC	A	1004	3	-	0/0/17/20	0/1/1/1
3	FUC	A	1005	3	-	0/0/17/20	0/1/1/1
3	NAG	B	1002	3,4	-	0/6/23/26	0/1/1/1
3	GAL	B	1003	3	-	0/2/19/22	0/1/1/1
3	FUC	B	1004	3	-	0/0/17/20	0/1/1/1
3	FUC	B	1005	3	-	0/0/17/20	0/1/1/1

There are no bond length outliers.

All (1) bond angle outliers are listed below:

Mol	Chain	Res	Type	Atoms	Z	Observed(°)	Ideal(°)
3	B	1003	GAL	C1-O5-C5	2.22	115.07	112.25

There are no chirality outliers.

There are no torsion outliers.

There are no ring outliers.

No monomer is involved in short contacts.

5.6 Ligand geometry

Of 4 ligands modelled in this entry, 2 are monoatomic - leaving 2 for Mogul analysis.

In the following table, the Counts columns list the number of bonds (or angles) for which Mogul statistics could be retrieved, the number of bonds (or angles) that are observed in the model and the number of bonds (or angles) that are defined in the chemical component dictionary. The Link column lists molecule types, if any, to which the group is linked. The Z score for a bond length (or angle) is the number of standard deviations the observed value is removed from the expected value. A bond length (or angle) with $|Z| > 2$ is considered an outlier worth inspection. RMSZ is the root-mean-square of all Z scores of the bond lengths (or angles).

Mol	Type	Chain	Res	Link	Bond lengths			Bond angles		
					Counts	RMSZ	$\# Z > 2$	Counts	RMSZ	$\# Z > 2$
4	NPO	A	1001	3	8,10,10	0.48	0	11,13,13	0.44	0
4	NPO	B	1001	3	8,10,10	0.50	0	11,13,13	0.35	0

In the following table, the Chirals column lists the number of chiral outliers, the number of chiral centers analysed, the number of these observed in the model and the number defined in the chemical component dictionary. Similar counts are reported in the Torsion and Rings columns. '-' means no outliers of that kind were identified.

Mol	Type	Chain	Res	Link	Chirals	Torsions	Rings
4	NPO	A	1001	3	-	0/4/4/4	0/1/1/1
4	NPO	B	1001	3	-	0/4/4/4	0/1/1/1

There are no bond length outliers.

There are no bond angle outliers.

There are no chirality outliers.

There are no torsion outliers.

There are no ring outliers.

No monomer is involved in short contacts.

5.7 Other polymers

There are no such residues in this entry.

5.8 Polymer linkage issues ⓘ

There are no chain breaks in this entry.

6 Fit of model and data

6.1 Protein, DNA and RNA chains

In the following table, the column labelled ‘#RSRZ> 2’ contains the number (and percentage) of RSRZ outliers, followed by percent RSRZ outliers for the chain as percentile scores relative to all X-ray entries and entries of similar resolution. The OWAB column contains the minimum, median, 95th percentile and maximum values of the occupancy-weighted average B-factor per residue. The column labelled ‘Q< 0.9’ lists the number of (and percentage) of residues with an average occupancy less than 0.9.

Mol	Chain	Analysed	<RSRZ>	#RSRZ>2	OWAB(Å ²)	Q<0.9
1	A	311/326 (95%)	1.23	45 (14%) 3 3	9, 14, 26, 35	0
1	B	302/326 (92%)	1.25	43 (14%) 4 3	9, 14, 27, 30	0
All	All	613/652 (94%)	1.24	88 (14%) 3 3	9, 14, 27, 35	0

All (88) RSRZ outliers are listed below:

Mol	Chain	Res	Type	RSRZ
1	B	410	LEU	13.8
1	A	410	LEU	12.5
1	A	315	PHE	12.4
1	B	503	VAL	10.4
1	A	409	SER	9.4
1	A	503	VAL	8.2
1	B	525	PHE	8.2
1	A	412	GLN	7.0
1	B	409	SER	6.7
1	A	411	SER	6.4
1	B	411	SER	6.4
1	A	408	SER	6.2
1	A	314	ALA	6.0
1	A	225	ILE	5.9
1	B	502	GLY	5.8
1	B	315	PHE	5.7
1	B	481	THR	5.5
1	B	425	PHE	5.4
1	B	504	GLY	5.2
1	B	394	PRO	5.1
1	A	316	ASP	5.1
1	A	224	THR	5.0
1	A	394	PRO	5.0
1	B	505	ALA	4.9

Continued on next page...

Continued from previous page...

Mol	Chain	Res	Type	RSRZ
1	A	414	ALA	4.8
1	A	393	PRO	4.8
1	B	313	MET	4.7
1	A	534	ALA	4.6
1	B	412	GLN	4.5
1	B	395	GLY	4.5
1	B	314	ALA	4.1
1	A	533	THR	4.1
1	B	480	ASP	4.1
1	A	413	ALA	4.1
1	B	501	ASN	4.1
1	A	504	GLY	3.9
1	B	482	ASN	3.8
1	A	395	GLY	3.7
1	B	483	ARG	3.6
1	A	407	GLY	3.6
1	B	393	PRO	3.5
1	A	229	THR	3.4
1	A	415	ASN	3.4
1	A	317	SER	3.3
1	B	408	SER	3.3
1	B	230	ARG	3.2
1	B	316	ASP	3.0
1	A	367	ILE	3.0
1	A	261	SER	2.9
1	A	396	THR	2.8
1	A	392	THR	2.8
1	B	302	LEU	2.7
1	B	414	ALA	2.7
1	A	398	ILE	2.7
1	A	226	GLU	2.6
1	A	259	ASP	2.6
1	A	227	GLN	2.6
1	A	260	ALA	2.6
1	B	526	TYR	2.6
1	B	531	VAL	2.5
1	B	496	LEU	2.5
1	B	527	GLN	2.5
1	B	358	GLN	2.5
1	A	430	VAL	2.5
1	A	358	GLN	2.4
1	B	413	ALA	2.4

Continued on next page...

Continued from previous page...

Mol	Chain	Res	Type	RSRZ
1	A	331	TRP	2.3
1	B	367	ILE	2.3
1	B	398	ILE	2.3
1	B	529	LYS	2.3
1	A	432	PHE	2.3
1	A	372	VAL	2.3
1	B	353	VAL	2.3
1	B	430	VAL	2.3
1	A	490	LEU	2.3
1	B	490	LEU	2.3
1	A	323	PHE	2.3
1	A	387	ILE	2.2
1	A	483	ARG	2.2
1	B	331	TRP	2.2
1	A	496	LEU	2.1
1	A	502	GLY	2.1
1	A	397	ASP	2.1
1	B	311	PRO	2.1
1	B	528	LEU	2.1
1	A	374	ASN	2.0
1	B	488	PHE	2.0
1	B	392	THR	2.0

6.2 Non-standard residues in protein, DNA, RNA chains [i](#)

There are no non-standard protein/DNA/RNA residues in this entry.

6.3 Carbohydrates [i](#)

In the following table, the Atoms column lists the number of modelled atoms in the group and the number defined in the chemical component dictionary. LLDF column lists the quality of electron density of the group with respect to its neighbouring residues in protein, DNA or RNA chains. The B-factors column lists the minimum, median, 95th percentile and maximum values of B factors of atoms in the group. The column labelled 'Q< 0.9' lists the number of atoms with occupancy less than 0.9.

Mol	Type	Chain	Res	Atoms	RSCC	RSR	LLDF	B-factors(Å ²)	Q<0.9
3	FUC	B	1004	10/11	0.89	0.12	0.83	17,18,19,19	0
3	FUC	B	1005	10/11	0.88	0.12	0.78	17,18,20,20	0
3	FUC	A	1005	10/11	0.92	0.11	-0.05	13,14,15,16	0
3	GAL	B	1003	11/12	0.94	0.10	-0.94	14,16,17,17	0

Continued on next page...

Continued from previous page...

Mol	Type	Chain	Res	Atoms	RSCC	RSR	LLDF	B-factors(\AA^2)	Q<0.9
3	GAL	A	1003	11/12	0.95	0.10	-1.18	13,13,14,16	0
3	FUC	A	1004	10/11	0.92	0.11	-1.28	13,15,16,16	0
3	NAG	A	1002	14/15	0.93	0.12	-	13,15,17,18	0
3	NAG	B	1002	14/15	0.89	0.17	-	18,22,23,24	0

6.4 Ligands [i](#)

In the following table, the Atoms column lists the number of modelled atoms in the group and the number defined in the chemical component dictionary. LLDF column lists the quality of electron density of the group with respect to its neighbouring residues in protein, DNA or RNA chains. The B-factors column lists the minimum, median, 95th percentile and maximum values of B factors of atoms in the group. The column labelled 'Q< 0.9' lists the number of atoms with occupancy less than 0.9.

Mol	Type	Chain	Res	Atoms	RSCC	RSR	LLDF	B-factors(\AA^2)	Q<0.9
2	NA	A	701	1/1	0.87	0.12	-0.71	34,34,34,34	0
2	NA	B	701	1/1	0.98	0.09	-1.56	17,17,17,17	0
4	NPO	B	1001	10/10	0.71	0.37	-	28,32,34,34	0
4	NPO	A	1001	10/10	0.89	0.15	-	19,23,26,26	0

6.5 Other polymers [i](#)

There are no such residues in this entry.