



Full wwPDB X-ray Structure Validation Report ⓘ

Feb 19, 2016 – 09:38 PM GMT

PDB ID : 5AVX
Title : Kinetics by X-ray crystallography: Tl⁺-substitution of bound K⁺ in the E2.MgF₄2-.2K⁺ crystal after 20 min
Authors : Ogawa, H.; Cornelius, F.; Hirata, A.; Toyoshima, C.
Deposited on : 2015-07-01
Resolution : 3.30 Å(reported)

This is a Full wwPDB X-ray Structure Validation Report for a publicly released PDB entry.
We welcome your comments at validation@mail.wwpdb.org
A user guide is available at
<http://wwpdb.org/validation/2016/XrayValidationReportHelp>
with specific help available everywhere you see the ⓘ symbol.

The following versions of software and data (see [references ⓘ](#)) were used in the production of this report:

MolProbity : 4.02b-467
Mogul : 1.7.1 (RC1), CSD as537be (2016)
Xtriage (Phenix) : 1.9-1692
EDS : rb-20026982
Percentile statistics : 20151230.v01 (using entries in the PDB archive December 30th 2015)
Refmac : 5.8.0135
CCP4 : 6.5.0
Ideal geometry (proteins) : Engh & Huber (2001)
Ideal geometry (DNA, RNA) : Parkinson et al. (1996)
Validation Pipeline (wwPDB-VP) : rb-20026982

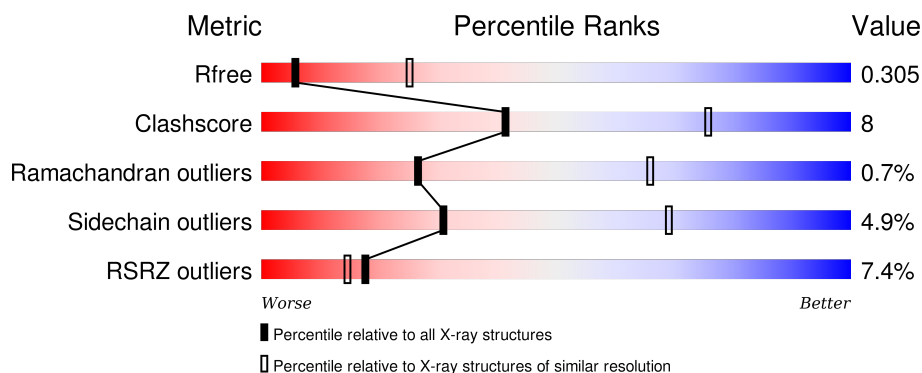
1 Overall quality at a glance ⓘ

The following experimental techniques were used to determine the structure:

X-RAY DIFFRACTION

The reported resolution of this entry is 3.30 Å.

Percentile scores (ranging between 0-100) for global validation metrics of the entry are shown in the following graphic. The table shows the number of entries on which the scores are based.



Metric	Whole archive (#Entries)	Similar resolution (#Entries, resolution range(Å))
R_{free}	91344	2060 (3.40-3.20)
Clashscore	102246	1058 (3.38-3.22)
Ramachandran outliers	100387	1038 (3.38-3.22)
Sidechain outliers	100360	1037 (3.38-3.22)
RSRZ outliers	91569	2070 (3.40-3.20)

The table below summarises the geometric issues observed across the polymeric chains and their fit to the electron density. The red, orange, yellow and green segments on the lower bar indicate the fraction of residues that contain outliers for ≥ 3 , 2, 1 and 0 types of geometric quality criteria. A grey segment represents the fraction of residues that are not modelled. The numeric value for each fraction is indicated below the corresponding segment, with a dot representing fractions $\leq 5\%$. The upper red bar (where present) indicates the fraction of residues that have poor fit to the electron density. The numeric value is given above the bar.

Mol	Chain	Length	Quality of chain
1	A	1028	<div> <div>6%</div> <div>74%</div> <div>21%</div> <div>• •</div> </div>
2	B	305	<div> <div>11%</div> <div>67%</div> <div>19%</div> <div>• 12%</div> </div>
3	G	74	<div> <div>%</div> <div>36%</div> <div>16%</div> <div>47%</div> </div>

The following table lists non-polymeric compounds, carbohydrate monomers and non-standard residues in protein, DNA, RNA chains that are outliers for geometric or electron-density-fit criteria:

Mol	Type	Chain	Res	Chirality	Geometry	Clashes	Electron density
4	MF4	A	2001	-	-	-	X
5	MG	A	2002	-	-	-	X
8	CLR	B	3001	-	-	-	X

2 Entry composition [i](#)

There are 10 unique types of molecules in this entry. The entry contains 10235 atoms, of which 0 are hydrogens and 0 are deuteriums.

In the tables below, the ZeroOcc column contains the number of atoms modelled with zero occupancy, the AltConf column contains the number of residues with at least one atom in alternate conformation and the Trace column contains the number of residues modelled with at most 2 atoms.

- Molecule 1 is a protein called Na, K-ATPase alpha subunit.

Mol	Chain	Residues	Atoms					ZeroOcc	AltConf	Trace
1	A	992	Total	C	N	O	S	0	0	0
			7675	4886	1290	1453	46			

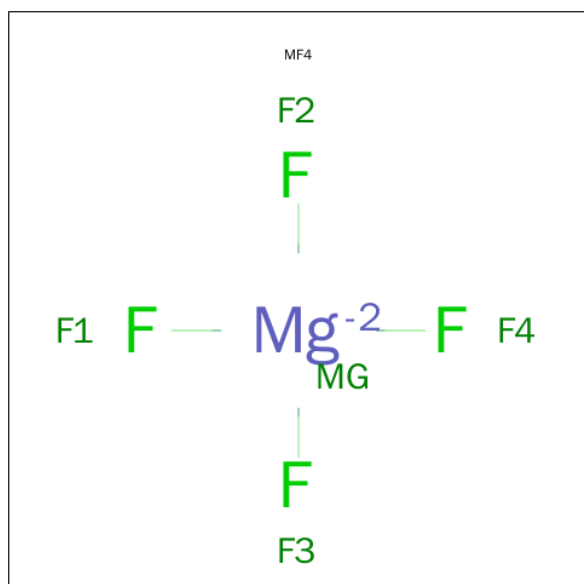
- Molecule 2 is a protein called Na⁺,K⁺-ATPase beta subunit.

Mol	Chain	Residues	Atoms					ZeroOcc	AltConf	Trace
2	B	268	Total	C	N	O	S	0	0	0
			2174	1409	358	396	11			

- Molecule 3 is a protein called Phospholemman-like protein.

Mol	Chain	Residues	Atoms					ZeroOcc	AltConf	Trace
3	G	39	Total	C	N	O	S	0	0	0
			305	200	50	54	1			

- Molecule 4 is TETRAFLUOROMAGNESATE(2-) (three-letter code: MF4) (formula: F₄Mg).



Mol	Chain	Residues	Atoms	ZeroOcc	AltConf
4	A	1	Total F Mg 5 4 1	0	0

- Molecule 5 is MAGNESIUM ION (three-letter code: MG) (formula: Mg).

Mol	Chain	Residues	Atoms	ZeroOcc	AltConf
5	A	1	Total Mg 1 1	0	0

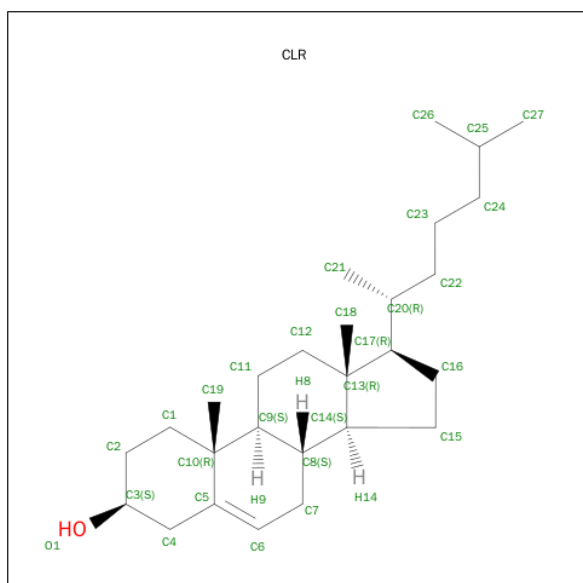
- Molecule 6 is THALLIUM (I) ION (three-letter code: TL) (formula: Tl).

Mol	Chain	Residues	Atoms	ZeroOcc	AltConf
6	A	3	Total Tl 3 3	0	1

- Molecule 7 is POTASSIUM ION (three-letter code: K) (formula: K).

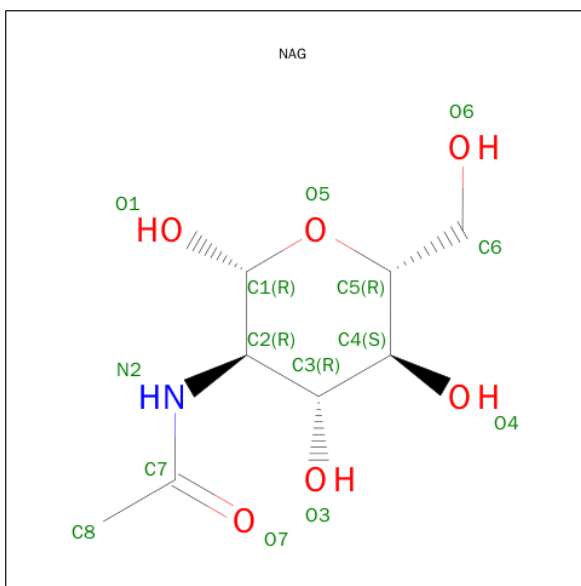
Mol	Chain	Residues	Atoms	ZeroOcc	AltConf
7	A	1	Total K 1 1	0	1

- Molecule 8 is CHOLESTEROL (three-letter code: CLR) (formula: C₂₇H₄₆O).



Mol	Chain	Residues	Atoms	ZeroOcc	AltConf
8	B	1	Total C O 28 27 1	0	0

- Molecule 9 is N-ACETYL-D-GLUCOSAMINE (three-letter code: NAG) (formula: $C_8H_{15}NO_6$).



Mol	Chain	Residues	Atoms				ZeroOcc	AltConf
9	B	1	Total	C	N	O	0	0
			14	8	1	5		
9	B	1	Total	C	N	O	0	0
			14	8	1	5		
9	B	1	Total	C	N	O	0	0
			14	8	1	5		

- Molecule 10 is water.

Mol	Chain	Residues	Atoms		ZeroOcc	AltConf
10	A	1	Total	O	0	0
			1	1		

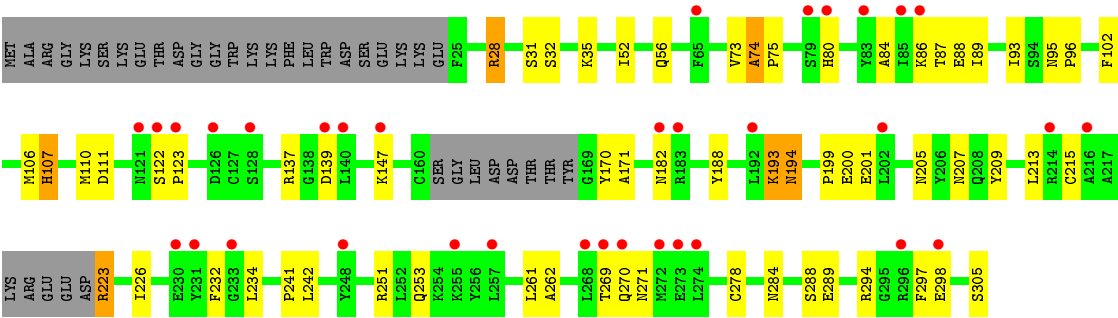
These plots are drawn for all protein, RNA and DNA chains in the entry. The first graphic for a chain summarises the proportions of errors displayed in the second graphic. The second graphic shows the sequence view annotated by issues in geometry and electron density. Residues are color-coded according to the number of geometric quality criteria for which they contain at least one outlier: green = 0, yellow = 1, orange = 2 and red = 3 or more. A red dot above a residue indicates a poor fit to the electron density ($\text{RSRZ} > 2$). Stretches of 2 or more consecutive residues without any outlier are shown as a green connector. Residues present in the sample, but not in the model, are shown in grey.

- Chain A: 6% 74% 21%

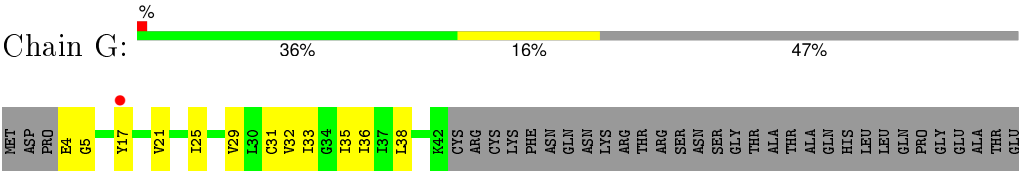
The figure displays a sequence of 100 amino acids, each with its residue number and a color-coded bar indicating a property (likely hydrophobicity) ranging from -6% to 21%. The sequence is as follows:

Residue Number	Amino Acid	Property (%)
1	Met	-6%
2	Gly	-6%
3	Lys	-6%
4	Gly	-6%
5	Thr	-6%
6	Ala	-6%
7	Ser	-6%
8	Asp	-6%
9	Lys	-6%
10	Tyr	-6%
11	Glu	-6%
12	Pro	-6%
13	Ala	-6%
14	Ala	-6%
15	Thr	-6%
16	Ser	-6%
17	Glu	-6%
18	Asn	-6%
19	Ala	-6%
20	Thr	-6%
21	Lys	-6%
22	Ser	-6%
23	Lys	-6%
24	Lys	-6%
25	Gly	-6%
26	Lys	-6%
27	Lys	-6%
28	Asp	-6%
29	Lys	-6%
30	Ile	-6%
31	Asp	-6%
32	Lys	-6%
33	Arg	-6%
34	Asp	-6%
35	Lys	-6%
36	Lys	-6%
37	Lys	-6%
38	Lys	-6%
39	Lys	-6%
40	Lys	-6%
41	Lys	-6%
42	Lys	-6%
43	Lys	-6%
44	Lys	-6%
45	Lys	-6%
46	Lys	-6%
47	Lys	-6%
48	Lys	-6%
49	Lys	-6%
50	Lys	-6%
51	Lys	-6%
52	Lys	-6%
53	Lys	-6%
54	Lys	-6%
55	Lys	-6%
56	Lys	-6%
57	Lys	-6%
58	Lys	-6%
59	Lys	-6%
60	Lys	-6%
61	Lys	-6%
62	Lys	-6%
63	Lys	-6%
64	Lys	-6%
65	Lys	-6%
66	Lys	-6%
67	Lys	-6%
68	Lys	-6%
69	Lys	-6%
70	Lys	-6%
71	Lys	-6%
72	Lys	-6%
73	Lys	-6%
74	Lys	-6%
75	Lys	-6%
76	Lys	-6%
77	Lys	-6%
78	Lys	-6%
79	Lys	-6%
80	Lys	-6%
81	Lys	-6%
82	Lys	-6%
83	Lys	-6%
84	Lys	-6%
85	Lys	-6%
86	Lys	-6%
87	Lys	-6%
88	Lys	-6%
89	Lys	-6%
90	Lys	-6%
91	Lys	-6%
92	Lys	-6%
93	Lys	-6%
94	Lys	-6%
95	Lys	-6%
96	Lys	-6%
97	Lys	-6%
98	Lys	-6%
99	Lys	-6%
100	Lys	-6%

- Chain B:  11% 67% 19% 1%



● Molecule 3: Phospholemman-like protein



4 Data and refinement statistics

Property	Value	Source
Space group	C 1 2 1	Depositor
Cell constants a, b, c, α , β , γ	221.05Å 50.77Å 163.40Å 90.00° 103.67° 90.00°	Depositor
Resolution (Å)	15.00 – 3.30 38.97 – 3.30	Depositor EDS
% Data completeness (in resolution range)	70.4 (15.00-3.30) 71.5 (38.97-3.30)	Depositor EDS
R_{merge}	(Not available)	Depositor
R_{sym}	(Not available)	Depositor
$\langle I/\sigma(I) \rangle$ ¹	3.57 (at 3.32Å)	Xtriage
Refinement program	CNS 1.2	Depositor
R, R_{free}	0.315 , 0.312 0.302 , 0.305	Depositor DCC
R_{free} test set	605 reflections (3.24%)	DCC
Wilson B-factor (Å ²)	97.3	Xtriage
Anisotropy	0.315	Xtriage
Bulk solvent k_{sol} (e/Å ³), B_{sol} (Å ²)	0.28 , 75.6	EDS
Estimated twinning fraction	No twinning to report.	Xtriage
L-test for twinning ²	$\langle L \rangle = 0.45$, $\langle L^2 \rangle = 0.27$	Xtriage
Outliers	0 of 20396 reflections	Xtriage
F_o, F_c correlation	0.89	EDS
Total number of atoms	10235	wwPDB-VP
Average B, all atoms (Å ²)	150.0	wwPDB-VP

Xtriage's analysis on translational NCS is as follows: *The largest off-origin peak in the Patterson function is 5.81% of the height of the origin peak. No significant pseudotranslation is detected.*

¹Intensities estimated from amplitudes.

²Theoretical values of $\langle |L| \rangle$, $\langle L^2 \rangle$ for acentric reflections are 0.5, 0.375 respectively for untwinned datasets, and 0.333, 0.2 for perfectly twinned datasets.

5 Model quality

5.1 Standard geometry

Bond lengths and bond angles in the following residue types are not validated in this section: MG, NAG, K, TL, MF4, CLR

The Z score for a bond length (or angle) is the number of standard deviations the observed value is removed from the expected value. A bond length (or angle) with $|Z| > 5$ is considered an outlier worth inspection. RMSZ is the root-mean-square of all Z scores of the bond lengths (or angles).

Mol	Chain	Bond lengths		Bond angles	
		RMSZ	$\# Z > 5$	RMSZ	$\# Z > 5$
1	A	0.38	0/7825	0.51	0/10616
2	B	0.36	0/2229	0.49	0/3002
3	G	0.36	0/309	0.46	0/419
All	All	0.38	0/10363	0.51	0/14037

There are no bond length outliers.

There are no bond angle outliers.

There are no chirality outliers.

There are no planarity outliers.

5.2 Too-close contacts

In the following table, the Non-H and H(model) columns list the number of non-hydrogen atoms and hydrogen atoms in the chain respectively. The H(added) column lists the number of hydrogen atoms added and optimized by MolProbity. The Clashes column lists the number of clashes within the asymmetric unit, whereas Symm-Clashes lists symmetry related clashes.

Mol	Chain	Non-H	H(model)	H(added)	Clashes	Symm-Clashes
1	A	7675	0	7699	125	1
2	B	2174	0	2146	46	0
3	G	305	0	318	8	0
4	A	5	0	0	0	0
5	A	1	0	0	0	0
6	A	3	0	0	0	0
7	A	1	0	0	0	0
8	B	28	0	46	1	0
9	B	42	0	38	0	0
10	A	1	0	0	0	0
All	All	10235	0	10247	173	1

The all-atom clashscore is defined as the number of clashes found per 1000 atoms (including hydrogen atoms). The all-atom clashscore for this structure is 8.

All (173) close contacts within the same asymmetric unit are listed below, sorted by their clash magnitude.

Atom-1	Atom-2	Interatomic distance (Å)	Clash overlap (Å)
2:B:74:ALA:HB3	2:B:75:PRO:HD3	1.47	0.94
1:A:905:GLN:NE2	2:B:182:ASN:HA	1.94	0.82
1:A:478:VAL:HG21	1:A:571:PHE:HB2	1.64	0.79
1:A:497:LYS:HE2	1:A:499:SER:HB2	1.68	0.75
1:A:868:SER:O	1:A:872:ILE:HG12	1.86	0.75
1:A:61:ARG:HH11	1:A:61:ARG:HB3	1.52	0.73
1:A:261:THR:HG22	1:A:264:ARG:NH2	2.02	0.73
1:A:51:LEU:HD13	1:A:204:ARG:HG3	1.69	0.72
2:B:270:GLN:HG2	2:B:271:ASN:HD22	1.58	0.68
1:A:766:ARG:HD2	1:A:832:MET:CE	2.24	0.68
1:A:339:THR:HG23	1:A:820:ILE:HD13	1.77	0.67
2:B:213:LEU:HD11	2:B:278:CYS:HB3	1.78	0.65
1:A:935:ILE:HG23	1:A:944:ILE:HD12	1.77	0.65
1:A:78:ASN:HA	1:A:261:THR:HG23	1.79	0.64
1:A:160:SER:HB3	1:A:741:VAL:HG22	1.80	0.63
2:B:74:ALA:CB	2:B:75:PRO:HD3	2.23	0.63
1:A:816:MET:O	1:A:820:ILE:HG12	1.97	0.63
1:A:52:HIS:HA	1:A:57:THR:HG23	1.80	0.63
2:B:28:ARG:HB2	2:B:32:SER:HB3	1.81	0.63
1:A:673:LEU:HD22	1:A:677:VAL:HG11	1.80	0.62
2:B:193:LYS:HA	2:B:207:ASN:HD21	1.65	0.62
1:A:905:GLN:HE21	2:B:182:ASN:HA	1.64	0.62
1:A:323:PHE:O	1:A:327:ILE:HG12	2.01	0.61
1:A:64:THR:HG22	1:A:66:ALA:H	1.65	0.61
3:G:29:VAL:O	3:G:33:ILE:HG12	2.00	0.60
1:A:483:ASN:HB2	1:A:486:ASN:HB2	1.82	0.60
2:B:270:GLN:HG2	2:B:271:ASN:ND2	2.16	0.60
2:B:31:SER:O	2:B:35:LYS:HG3	2.00	0.60
1:A:363:ALA:HB1	1:A:730:ILE:HD12	1.83	0.60
1:A:344:LEU:HB3	1:A:361:LEU:HG	1.85	0.59
2:B:84:ALA:HB1	2:B:88:GLU:H	1.67	0.59
1:A:392:TRP:HB3	1:A:588:LEU:HB2	1.84	0.59
3:G:21:VAL:O	3:G:25:ILE:HG12	2.02	0.59
1:A:212:LYS:HB2	1:A:251:GLU:HG2	1.85	0.59
1:A:106:ILE:O	1:A:110:LEU:HB2	2.03	0.59
2:B:106:MET:O	2:B:110:MET:HG2	2.03	0.58
1:A:345:THR:HA	1:A:361:LEU:HD11	1.84	0.57

Continued on next page...

Continued from previous page...

Atom-1	Atom-2	Interatomic distance (Å)	Clash overlap (Å)
2:B:75:PRO:HG2	2:B:294:ARG:HH21	1.68	0.57
2:B:193:LYS:HA	2:B:207:ASN:ND2	2.20	0.57
1:A:491:SER:HB3	1:A:493:HIS:NE2	2.20	0.57
2:B:74:ALA:HB3	2:B:75:PRO:CD	2.29	0.56
2:B:52:ILE:O	2:B:56:GLN:HG2	2.05	0.56
1:A:818:PRO:HB3	1:A:934:LEU:HD22	1.87	0.56
2:B:137:ARG:HD2	2:B:147:LYS:HB3	1.88	0.56
1:A:933:ASP:HA	1:A:936:ILE:HG12	1.86	0.56
1:A:172:ILE:HD13	1:A:177:LYS:HB3	1.87	0.56
1:A:190:LEU:HD11	1:A:206:ILE:HD11	1.88	0.55
2:B:93:ILE:H	2:B:305:SER:HB2	1.72	0.55
1:A:157:ILE:HD11	1:A:745:ALA:HA	1.88	0.55
1:A:994:TYR:O	1:A:997:ILE:HG22	2.06	0.55
1:A:351:MET:HA	1:A:354:LYS:HG2	1.88	0.55
1:A:596:ARG:HB2	1:A:599:VAL:HG23	1.89	0.55
1:A:261:THR:HG22	1:A:264:ARG:HH21	1.71	0.54
1:A:994:TYR:HA	1:A:997:ILE:HG22	1.89	0.54
1:A:924:ILE:HD12	1:A:983:LEU:HD12	1.89	0.54
1:A:64:THR:HG22	1:A:66:ALA:N	2.23	0.54
1:A:921:SER:HA	1:A:983:LEU:HD11	1.90	0.54
1:A:51:LEU:CD1	1:A:204:ARG:HG3	2.36	0.53
1:A:424:ILE:HG23	1:A:506:VAL:HB	1.90	0.53
2:B:213:LEU:HD23	2:B:261:LEU:HD13	1.89	0.53
1:A:1016:TRP:HE1	2:B:35:LYS:HE3	1.74	0.53
1:A:324:LEU:O	1:A:328:ILE:HG12	2.09	0.52
1:A:161:PHE:HA	1:A:164:MET:CE	2.39	0.52
1:A:212:LYS:HD3	1:A:224:PRO:HB2	1.90	0.52
1:A:808:LEU:O	1:A:812:LEU:HB2	2.10	0.52
2:B:75:PRO:HG2	2:B:294:ARG:NH2	2.25	0.52
1:A:766:ARG:HD2	1:A:832:MET:HE2	1.91	0.52
3:G:32:VAL:O	3:G:36:ILE:HG12	2.09	0.52
1:A:161:PHE:HA	1:A:164:MET:HE3	1.92	0.51
1:A:82:PRO:HA	1:A:158:MET:HG2	1.92	0.51
3:G:25:ILE:O	3:G:29:VAL:HG23	2.11	0.51
1:A:572:ASP:HB3	1:A:577:ASN:HB2	1.92	0.51
1:A:788:THR:N	1:A:789:PRO:HD2	2.26	0.51
1:A:417:THR:HA	1:A:522:LEU:HD22	1.93	0.51
2:B:28:ARG:NH1	8:B:3001:CLR:H22	2.26	0.50
2:B:288:SER:HB2	2:B:294:ARG:HH11	1.77	0.50
1:A:571:PHE:HA	1:A:577:ASN:HD22	1.76	0.50
1:A:359:LYS:HE2	1:A:746:ALA:O	2.12	0.49

Continued on next page...

Continued from previous page...

Atom-1	Atom-2	Interatomic distance (Å)	Clash overlap (Å)
1:A:826:GLN:HE22	1:A:950:LYS:HE3	1.78	0.49
2:B:232:PHE:HB2	2:B:262:ALA:HB3	1.93	0.49
1:A:1005:ARG:NH1	1:A:1006:ARG:HG3	2.28	0.49
2:B:209:TYR:HA	2:B:242:LEU:HD22	1.95	0.48
1:A:502:ARG:CG	1:A:503:TYR:H	2.27	0.48
1:A:442:ILE:O	1:A:445:ARG:HG2	2.14	0.48
1:A:797:ASN:HD22	1:A:887:ARG:HD3	1.79	0.47
1:A:323:PHE:CE1	1:A:793:PHE:HE2	2.32	0.47
1:A:132:LEU:HD21	1:A:804:THR:HG21	1.97	0.47
1:A:814:THR:HB	1:A:961:GLU:HG3	1.96	0.47
2:B:87:THR:HB	2:B:298:GLU:O	2.14	0.47
1:A:171:VAL:HG12	1:A:191:VAL:HG22	1.97	0.47
3:G:31:CYS:O	3:G:35:ILE:HG12	2.14	0.47
2:B:80:HIS:HB3	2:B:297:PHE:CZ	2.50	0.47
1:A:127:ASN:HB3	1:A:131:TYR:CD1	2.50	0.47
1:A:336:LEU:HD11	1:A:776:ILE:HG12	1.96	0.46
2:B:226:ILE:HG22	2:B:269:THR:HB	1.96	0.46
1:A:631:VAL:HG23	1:A:633:ILE:HG12	1.96	0.46
2:B:215:CYS:HA	2:B:278:CYS:HA	1.96	0.46
1:A:924:ILE:HD12	1:A:983:LEU:CD1	2.45	0.46
2:B:122:SER:HA	2:B:123:PRO:HA	1.75	0.46
1:A:63:LEU:HD22	1:A:189:ASP:HB3	1.97	0.46
1:A:670:LEU:HD23	1:A:678:LEU:HD21	1.96	0.46
1:A:784:ILE:HD11	1:A:854:TYR:CG	2.51	0.46
1:A:889:ARG:HD2	1:A:895:ILE:CD1	2.45	0.45
1:A:209:HIS:HB3	1:A:253:THR:HG22	1.98	0.45
1:A:303:GLY:HA2	1:A:327:ILE:HG21	1.97	0.45
1:A:475:PRO:HD2	1:A:494:GLU:HB2	1.99	0.45
1:A:631:VAL:CG2	1:A:633:ILE:HG12	2.46	0.45
1:A:676:GLU:H	1:A:676:GLU:CD	2.20	0.45
2:B:84:ALA:HB1	2:B:88:GLU:N	2.32	0.45
1:A:847:GLU:H	1:A:847:GLU:CD	2.20	0.45
1:A:722:SER:OG	1:A:723:PRO:HD3	2.17	0.45
1:A:52:HIS:HE2	1:A:59:LEU:HD12	1.82	0.44
1:A:915:GLU:O	1:A:918:CYS:HB2	2.17	0.44
1:A:806:THR:HG22	1:A:923:PHE:HB2	2.00	0.44
2:B:234:LEU:HG	2:B:241:PRO:HG3	1.99	0.44
1:A:354:LYS:HB2	1:A:354:LYS:HZ2	1.81	0.44
2:B:194:ASN:N	2:B:194:ASN:HD22	2.15	0.44
1:A:894:TRP:CH2	2:B:86:LYS:HG2	2.53	0.44
1:A:246:SER:OG	1:A:267:MET:HG3	2.18	0.44

Continued on next page...

Continued from previous page...

Atom-1	Atom-2	Interatomic distance (Å)	Clash overlap (Å)
2:B:107:HIS:O	2:B:111:ASP:HB2	2.18	0.43
1:A:273:LEU:O	1:A:277:LEU:HG	2.18	0.43
2:B:107:HIS:ND1	2:B:170:TYR:HE1	2.17	0.43
1:A:956:PHE:CE1	3:G:38:LEU:HD22	2.53	0.43
1:A:790:PHE:O	1:A:794:ILE:HG12	2.19	0.43
2:B:147:LYS:HB2	2:B:253:GLN:HG3	1.99	0.43
1:A:87:PRO:HD2	1:A:90:ILE:HD12	1.99	0.43
1:A:110:LEU:HD22	1:A:324:LEU:HD12	1.99	0.43
3:G:4:GLU:CD	3:G:5:GLY:H	2.22	0.43
1:A:511:PRO:HG2	1:A:542:TYR:CE1	2.53	0.43
1:A:64:THR:HA	1:A:174:ASP:OD1	2.19	0.42
1:A:300:VAL:O	1:A:304:VAL:HG22	2.19	0.42
1:A:940:ARG:HE	1:A:1023:TYR:HB2	1.84	0.42
2:B:74:ALA:CB	2:B:75:PRO:CD	2.92	0.42
1:A:170:LEU:HD21	1:A:177:LYS:HD3	2.00	0.42
1:A:661:LYS:HA	1:A:661:LYS:HE2	2.00	0.42
1:A:1020:GLU:OE2	2:B:28:ARG:NH2	2.45	0.42
2:B:223:ARG:HH11	2:B:223:ARG:HB2	1.84	0.42
1:A:291:PHE:HA	1:A:294:ILE:HD12	2.01	0.42
1:A:797:ASN:HB3	1:A:885:GLY:HA2	2.01	0.42
2:B:188:TYR:O	2:B:284:ASN:ND2	2.53	0.42
1:A:291:PHE:HB3	1:A:845:VAL:HB	2.02	0.42
2:B:89:ILE:HG22	2:B:102:PHE:CE2	2.55	0.42
2:B:137:ARG:HB3	2:B:147:LYS:HD2	2.01	0.42
2:B:95:ASN:HA	2:B:96:PRO:HD3	1.86	0.42
2:B:194:ASN:HB3	2:B:205:ASN:OD1	2.20	0.42
1:A:378:THR:HA	1:A:382:THR:OG1	2.20	0.42
1:A:502:ARG:HE	1:A:562:GLU:HG2	1.85	0.41
1:A:784:ILE:N	1:A:785:PRO:HD2	2.35	0.41
1:A:367:LEU:HD23	1:A:761:GLY:HA3	2.01	0.41
1:A:48:LEU:HD23	1:A:59:LEU:HD11	2.01	0.41
1:A:920:THR:HG21	1:A:981:TYR:O	2.20	0.41
1:A:110:LEU:CD2	1:A:324:LEU:HD12	2.50	0.41
3:G:17:TYR:O	3:G:21:VAL:HG23	2.21	0.41
1:A:785:PRO:HB2	1:A:926:ILE:CD1	2.51	0.41
2:B:271:ASN:HD21	2:B:305:SER:N	2.19	0.41
1:A:44:HIS:HB3	1:A:242:ILE:HD11	2.03	0.41
1:A:846:ASN:ND2	1:A:848:ARG:HB2	2.35	0.41
1:A:540:ASN:N	1:A:540:ASN:HD22	2.18	0.41
1:A:426:ALA:O	1:A:471:ARG:HD2	2.20	0.41
1:A:342:VAL:HB	1:A:820:ILE:HD12	2.03	0.41

Continued on next page...

Continued from previous page...

Atom-1	Atom-2	Interatomic distance (Å)	Clash overlap (Å)
1:A:502:ARG:HG3	1:A:562:GLU:HG2	2.02	0.41
1:A:458:LYS:O	1:A:462:LEU:HB2	2.21	0.41
1:A:423:ARG:O	1:A:427:LEU:HB2	2.21	0.41
1:A:647:ARG:HH21	1:A:648:LEU:HD11	1.86	0.41
1:A:284:ILE:O	1:A:288:ILE:HG12	2.21	0.41
1:A:301:PHE:O	1:A:305:SER:HB2	2.20	0.41
1:A:702:VAL:HG13	1:A:712:VAL:HG21	2.03	0.41
1:A:831:ILE:O	1:A:834:ARG:HG2	2.22	0.40
1:A:900:ASP:OD1	1:A:904:GLN:HB2	2.21	0.40
1:A:354:LYS:HE2	1:A:760:THR:HB	2.02	0.40
1:A:925:SER:O	1:A:929:VAL:HG22	2.22	0.40
1:A:613:VAL:HG12	1:A:633:ILE:HD12	2.03	0.40
1:A:199:ILE:HG22	1:A:201:ALA:O	2.22	0.40

All (1) symmetry-related close contacts are listed below. The label for Atom-2 includes the symmetry operator and encoded unit-cell translations to be applied.

Atom-1	Atom-2	Interatomic distance (Å)	Clash overlap (Å)
1:A:430:ARG:NH2	1:A:648:LEU:O[1_565]	2.17	0.03

5.3 Torsion angles [i](#)

5.3.1 Protein backbone [i](#)

In the following table, the Percentiles column shows the percent Ramachandran outliers of the chain as a percentile score with respect to all X-ray entries followed by that with respect to entries of similar resolution.

The Analysed column shows the number of residues for which the backbone conformation was analysed, and the total number of residues.

Mol	Chain	Analysed	Favoured	Allowed	Outliers	Percentiles	
1	A	990/1028 (96%)	942 (95%)	43 (4%)	5 (0%)	34	71
2	B	262/305 (86%)	222 (85%)	36 (14%)	4 (2%)	13	49
3	G	37/74 (50%)	33 (89%)	4 (11%)	0	100	100
All	All	1289/1407 (92%)	1197 (93%)	83 (6%)	9 (1%)	26	66

All (9) Ramachandran outliers are listed below:

Mol	Chain	Res	Type
1	A	121	THR
1	A	128	ASP
1	A	576	PRO
2	B	74	ALA
2	B	171	ALA
2	B	201	GLU
1	A	123	ASP
1	A	1014	GLY
2	B	199	PRO

5.3.2 Protein sidechains ⓘ

In the following table, the Percentiles column shows the percent sidechain outliers of the chain as a percentile score with respect to all X-ray entries followed by that with respect to entries of similar resolution.

The Analysed column shows the number of residues for which the sidechain conformation was analysed, and the total number of residues.

Mol	Chain	Analysed	Rotameric	Outliers	Percentiles	
1	A	840/869 (97%)	796 (95%)	44 (5%)	29	67
2	B	234/266 (88%)	224 (96%)	10 (4%)	35	72
3	G	32/62 (52%)	32 (100%)	0	100	100
All	All	1106/1197 (92%)	1052 (95%)	54 (5%)	31	69

All (54) residues with a non-rotameric sidechain are listed below:

Mol	Chain	Res	Type
1	A	51	LEU
1	A	57	THR
1	A	61	ARG
1	A	63	LEU
1	A	72	LEU
1	A	128	ASP
1	A	165	VAL
1	A	213	VAL
1	A	217	SER
1	A	218	LEU
1	A	226	THR
1	A	231	PHE
1	A	245	PHE
1	A	248	ASN

Continued on next page...

Continued from previous page...

Mol	Chain	Res	Type
1	A	250	VAL
1	A	255	ARG
1	A	261	THR
1	A	284	ILE
1	A	309	LEU
1	A	344	LEU
1	A	354	LYS
1	A	391	MET
1	A	413	LYS
1	A	434	GLN
1	A	454	SER
1	A	457	LEU
1	A	524	ASN
1	A	540	ASN
1	A	557	HIS
1	A	581	THR
1	A	636	GLU
1	A	670	LEU
1	A	682	LEU
1	A	712	VAL
1	A	719	VAL
1	A	726	LYS
1	A	806	THR
1	A	811	ASP
1	A	833	LYS
1	A	847	GLU
1	A	880	PRO
1	A	974	THR
1	A	987	TRP
1	A	1019	GLN
2	B	28	ARG
2	B	73	VAL
2	B	107	HIS
2	B	139	ASP
2	B	193	LYS
2	B	194	ASN
2	B	200	GLU
2	B	223	ARG
2	B	251	ARG
2	B	289	GLU

Some sidechains can be flipped to improve hydrogen bonding and reduce clashes. All (21) such sidechains are listed below:

Mol	Chain	Res	Type
1	A	118	GLN
1	A	129	ASN
1	A	163	ASN
1	A	225	GLN
1	A	290	HIS
1	A	434	GLN
1	A	524	ASN
1	A	540	ASN
1	A	557	HIS
1	A	577	ASN
1	A	754	ASN
1	A	797	ASN
1	A	826	GLN
1	A	905	GLN
1	A	1019	GLN
2	B	80	HIS
2	B	194	ASN
2	B	207	ASN
2	B	264	GLN
2	B	271	ASN
2	B	284	ASN

5.3.3 RNA [i](#)

There are no RNA molecules in this entry.

5.4 Non-standard residues in protein, DNA, RNA chains [i](#)

There are no non-standard protein/DNA/RNA residues in this entry.

5.5 Carbohydrates [i](#)

There are no carbohydrates in this entry.

5.6 Ligand geometry [i](#)

Of 10 ligands modelled in this entry, 5 are monoatomic - leaving 5 for Mogul analysis.

In the following table, the Counts columns list the number of bonds (or angles) for which Mogul statistics could be retrieved, the number of bonds (or angles) that are observed in the model and the number of bonds (or angles) that are defined in the chemical component dictionary. The Link

column lists molecule types, if any, to which the group is linked. The Z score for a bond length (or angle) is the number of standard deviations the observed value is removed from the expected value. A bond length (or angle) with $|Z| > 2$ is considered an outlier worth inspection. RMSZ is the root-mean-square of all Z scores of the bond lengths (or angles).

Mol	Type	Chain	Res	Link	Bond lengths			Bond angles		
					Counts	RMSZ	$\# Z > 2$	Counts	RMSZ	$\# Z > 2$
4	MF4	A	2001	1	0,4,4	0.00	-	0,6,6	0.00	-
8	CLR	B	3001	-	31,31,31	0.44	0	48,48,48	1.06	4 (8%)
9	NAG	B	4001	9,2	14,14,15	0.47	0	15,19,21	0.94	1 (6%)
9	NAG	B	4002	9	14,14,15	0.62	0	15,19,21	1.44	1 (6%)
9	NAG	B	4021	2	14,14,15	0.58	0	15,19,21	1.07	1 (6%)

In the following table, the Chirals column lists the number of chiral outliers, the number of chiral centers analysed, the number of these observed in the model and the number defined in the chemical component dictionary. Similar counts are reported in the Torsion and Rings columns. '-' means no outliers of that kind were identified.

Mol	Type	Chain	Res	Link	Chirals	Torsions	Rings
4	MF4	A	2001	1	-	0/0/0/0	0/0/0/0
8	CLR	B	3001	-	-	0/10/68/68	0/4/4/4
9	NAG	B	4001	9,2	-	0/6/23/26	0/1/1/1
9	NAG	B	4002	9	-	0/6/23/26	0/1/1/1
9	NAG	B	4021	2	-	0/6/23/26	0/1/1/1

There are no bond length outliers.

All (7) bond angle outliers are listed below:

Mol	Chain	Res	Type	Atoms	Z	Observed(°)	Ideal(°)
8	B	3001	CLR	C4-C5-C6	-2.17	117.02	120.60
8	B	3001	CLR	C4-C5-C10	2.24	119.65	116.41
9	B	4021	NAG	C1-O5-C5	2.41	115.68	112.14
9	B	4001	NAG	C1-O5-C5	2.49	115.81	112.14
8	B	3001	CLR	C1-C2-C3	2.57	113.83	110.41
8	B	3001	CLR	C15-C14-C13	3.07	107.43	103.83
9	B	4002	NAG	C2-N2-C7	4.24	128.62	123.11

There are no chirality outliers.

There are no torsion outliers.

There are no ring outliers.

1 monomer is involved in 1 short contact:

Mol	Chain	Res	Type	Clashes	Symm-Clashes
8	B	3001	CLR	1	0

5.7 Other polymers [i](#)

There are no such residues in this entry.

5.8 Polymer linkage issues [i](#)

There are no chain breaks in this entry.

6 Fit of model and data

6.1 Protein, DNA and RNA chains

In the following table, the column labelled ‘#RSRZ> 2’ contains the number (and percentage) of RSRZ outliers, followed by percent RSRZ outliers for the chain as percentile scores relative to all X-ray entries and entries of similar resolution. The OWAB column contains the minimum, median, 95th percentile and maximum values of the occupancy-weighted average B-factor per residue. The column labelled ‘Q< 0.9’ lists the number of (and percentage) of residues with an average occupancy less than 0.9.

Mol	Chain	Analysed	<RSRZ>	#RSRZ>2	OWAB(Å ²)	Q<0.9
1	A	992/1028 (96%)	0.45	61 (6%) 25 20	115, 136, 177, 202	0
2	B	268/305 (87%)	0.73	34 (12%) 5 4	135, 186, 211, 220	0
3	G	39/74 (52%)	-0.01	1 (2%) 59 53	132, 140, 184, 187	0
All	All	1299/1407 (92%)	0.50	96 (7%) 17 14	115, 142, 199, 220	0

All (96) RSRZ outliers are listed below:

Mol	Chain	Res	Type	RSRZ
1	A	579	PRO	9.5
1	A	567	GLU	7.0
1	A	41	MET	6.6
1	A	534	MET	6.0
2	B	274	LEU	5.0
1	A	562	GLU	4.9
1	A	503	TYR	4.8
2	B	123	PRO	4.8
2	B	273	GLU	4.7
2	B	202	LEU	4.6
1	A	580	THR	4.5
1	A	578	PHE	4.4
1	A	260	TYR	4.4
1	A	530	LEU	4.3
1	A	563	ASP	4.3
1	A	894	TRP	4.2
1	A	317	TRP	4.1
1	A	568	GLY	4.0
2	B	216	ALA	4.0
1	A	42	ASP	3.9
2	B	79	SER	3.9
1	A	529	PRO	3.8
2	B	140	LEU	3.8

Continued on next page...

Continued from previous page...

Mol	Chain	Res	Type	RSRZ
2	B	298	GLU	3.7
1	A	815	ASP	3.5
1	A	880	PRO	3.5
1	A	149	TYR	3.3
2	B	183	ARG	3.2
1	A	72	LEU	3.2
1	A	79	SER	3.1
1	A	171	VAL	3.1
2	B	121	ASN	3.1
2	B	272	MET	3.0
2	B	255	LYS	3.0
1	A	84	PRO	3.0
1	A	571	PHE	2.9
1	A	573	ALA	2.9
2	B	231	TYR	2.9
2	B	214	ARG	2.9
2	B	269	THR	2.9
1	A	86	THR	2.9
1	A	533	ASP	2.8
1	A	504	LEU	2.8
1	A	781	THR	2.7
2	B	80	HIS	2.7
2	B	86	LYS	2.7
2	B	248	TYR	2.7
1	A	809	CYS	2.7
1	A	782	SER	2.6
2	B	147	LYS	2.6
2	B	182	ASN	2.6
1	A	57	THR	2.6
1	A	814	THR	2.6
1	A	896	SER	2.6
2	B	296	ARG	2.5
1	A	55	TYR	2.5
1	A	521	ILE	2.5
1	A	126	ALA	2.5
1	A	220	GLY	2.4
1	A	154	SER	2.4
1	A	427	LEU	2.4
1	A	803	GLY	2.4
1	A	184	PHE	2.4
1	A	779	THR	2.4
1	A	183	GLU	2.4

Continued on next page...

Continued from previous page...

Mol	Chain	Res	Type	RSRZ
2	B	126	ASP	2.4
1	A	312	ILE	2.4
2	B	139	ASP	2.3
2	B	230	GLU	2.3
2	B	270	GLN	2.3
2	B	233	GLY	2.3
2	B	83	TYR	2.3
2	B	128	SER	2.3
2	B	257	LEU	2.3
1	A	572	ASP	2.2
1	A	720	ASN	2.2
2	B	268	LEU	2.2
2	B	65	PHE	2.2
1	A	426	ALA	2.2
1	A	78	ASN	2.2
2	B	85	ILE	2.2
1	A	654	GLN	2.1
2	B	192	LEU	2.1
1	A	153	LYS	2.1
2	B	122	SER	2.1
1	A	777	ALA	2.1
1	A	45	LYS	2.1
1	A	883	LEU	2.1
1	A	807	ILE	2.1
1	A	443	LEU	2.1
1	A	185	VAL	2.0
3	G	17	TYR	2.0
1	A	77	PRO	2.0
1	A	794	ILE	2.0
1	A	122	GLU	2.0
1	A	544	GLU	2.0

6.2 Non-standard residues in protein, DNA, RNA chains ⓘ

There are no non-standard protein/DNA/RNA residues in this entry.

6.3 Carbohydrates ⓘ

There are no carbohydrates in this entry.

6.4 Ligands ⓘ

In the following table, the Atoms column lists the number of modelled atoms in the group and the number defined in the chemical component dictionary. LLDF column lists the quality of electron density of the group with respect to its neighbouring residues in protein, DNA or RNA chains. The B-factors column lists the minimum, median, 95th percentile and maximum values of B factors of atoms in the group. The column labelled 'Q< 0.9' lists the number of atoms with occupancy less than 0.9.

Mol	Type	Chain	Res	Atoms	RSCC	RSR	LLDF	B-factors(Å ²)	Q<0.9
8	CLR	B	3001	28/28	0.77	0.53	6.61	178,178,179,179	0
4	MF4	A	2001	5/5	0.87	0.47	2.21	120,121,123,123	0
5	MG	A	2002	1/1	0.76	0.45	1.59	117,117,117,117	0
6	TL	A	2006[B]	1/1	0.91	0.09	-3.01	133,133,133,133	1
7	K	A	2005[A]	1/1	0.91	0.09	-3.01	133,133,133,133	1
6	TL	A	2003	1/1	0.80	0.10	-3.23	137,137,137,137	0
6	TL	A	2004	1/1	0.96	0.11	-3.32	137,137,137,137	0
9	NAG	B	4021	14/15	0.63	0.82	-	199,199,200,200	0
9	NAG	B	4002	14/15	0.59	0.37	-	199,200,201,201	0
9	NAG	B	4001	14/15	0.81	0.30	-	193,195,196,198	0

6.5 Other polymers ⓘ

There are no such residues in this entry.