



wwPDB X-ray Structure Validation Summary Report ⓘ

Feb 1, 2016 – 07:28 AM GMT

PDB ID : 3AX9
Title : Bovine xanthine oxidase, protease cleaved form
Authors : Ishikita, H.; Eger, B.T.; Pai, E.F.; Okamoto, K.; Nishino, T.
Deposited on : 2011-03-31
Resolution : 2.30 Å(reported)

This is a wwPDB X-ray Structure Validation Summary Report for a publicly released PDB entry.
We welcome your comments at validation@mail.wwpdb.org
A user guide is available at
<http://wwpdb.org/validation/2016/XrayValidationReportHelp>
with specific help available everywhere you see the ⓘ symbol.

The following versions of software and data (see [references ⓘ](#)) were used in the production of this report:

MolProbity : 4.02b-467
Mogul : 1.7 (RC4), CSD as536be (2015)
Xtriage (Phenix) : 1.9-1692
EDS : rb-20026688
Percentile statistics : 20151230.v01 (using entries in the PDB archive December 30th 2015)
Refmac : 5.8.0135
CCP4 : 6.5.0
Ideal geometry (proteins) : Engh & Huber (2001)
Ideal geometry (DNA, RNA) : Parkinson et al. (1996)
Validation Pipeline (wwPDB-VP) : trunk26865

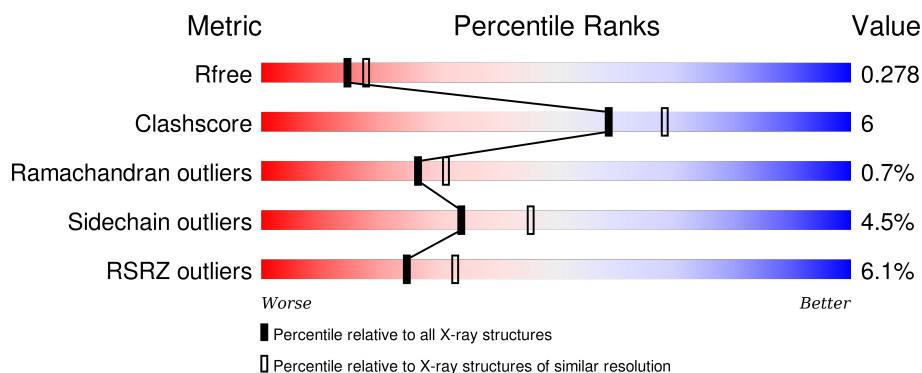
1 Overall quality at a glance

The following experimental techniques were used to determine the structure:

X-RAY DIFFRACTION

The reported resolution of this entry is 2.30 Å.

Percentile scores (ranging between 0-100) for global validation metrics of the entry are shown in the following graphic. The table shows the number of entries on which the scores are based.



Metric	Whole archive (#Entries)	Similar resolution (#Entries, resolution range(Å))
R_{free}	91344	3852 (2.30-2.30)
Clashscore	102246	4452 (2.30-2.30)
Ramachandran outliers	100387	4410 (2.30-2.30)
Sidechain outliers	100360	4409 (2.30-2.30)
RSRZ outliers	91569	3857 (2.30-2.30)

The table below summarises the geometric issues observed across the polymeric chains and their fit to the electron density. The red, orange, yellow and green segments on the lower bar indicate the fraction of residues that contain outliers for ≥ 3 , 2, 1 and 0 types of geometric quality criteria. A grey segment represents the fraction of residues that are not modelled. The numeric value for each fraction is indicated below the corresponding segment, with a dot representing fractions $\leq 5\%$. The upper red bar (where present) indicates the fraction of residues that have poor fit to the electron density. The numeric value is given above the bar.

Mol	Chain	Length	Quality of chain
1	A	1332	<div> <div>4%</div> <div>78%</div> <div>13%</div> <div>8%</div> </div>
1	B	1332	<div> <div>7%</div> <div>77%</div> <div>13%</div> <div>9%</div> </div>

The following table lists non-polymeric compounds, carbohydrate monomers and non-standard residues in protein, DNA, RNA chains that are outliers for geometric or electron-density-fit criteria:

Mol	Type	Chain	Res	Chirality	Geometry	Clashes	Electron density
7	GOL	A	1338	-	-	-	X
7	GOL	B	1338	-	-	-	X
8	SAL	A	1341	-	-	-	X
8	SAL	B	1340	-	-	-	X

2 Entry composition [i](#)

There are 9 unique types of molecules in this entry. The entry contains 19797 atoms, of which 0 are hydrogens and 0 are deuteriums.

In the tables below, the ZeroOcc column contains the number of atoms modelled with zero occupancy, the AltConf column contains the number of residues with at least one atom in alternate conformation and the Trace column contains the number of residues modelled with at most 2 atoms.

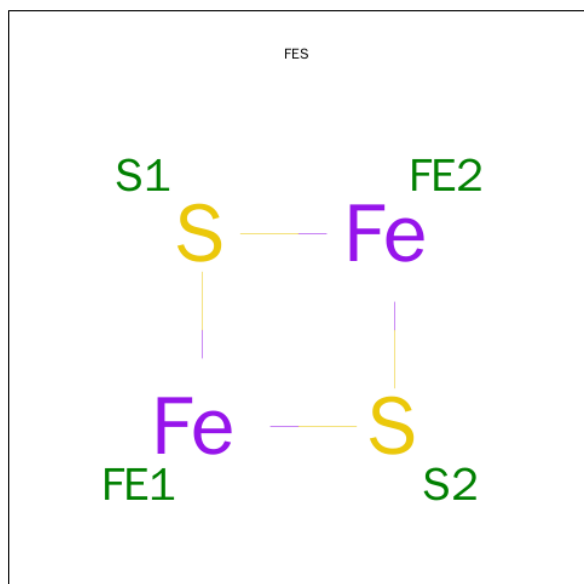
- Molecule 1 is a protein called Xanthine dehydrogenase/oxidase.

Mol	Chain	Residues	Atoms					ZeroOcc	AltConf	Trace
1	A	1225	Total	C	N	O	S	0	0	0
			9476	6013	1632	1771	60			
1	B	1218	Total	C	N	O	S	0	0	0
			9433	5988	1623	1763	59			

There are 2 discrepancies between the modelled and reference sequences:

Chain	Residue	Modelled	Actual	Comment	Reference
A	552	HIS	ASP	CONFLICT	UNP P80457
B	552	HIS	ASP	CONFLICT	UNP P80457

- Molecule 2 is FE2/S2 (INORGANIC) CLUSTER (three-letter code: FES) (formula: Fe₂S₂).



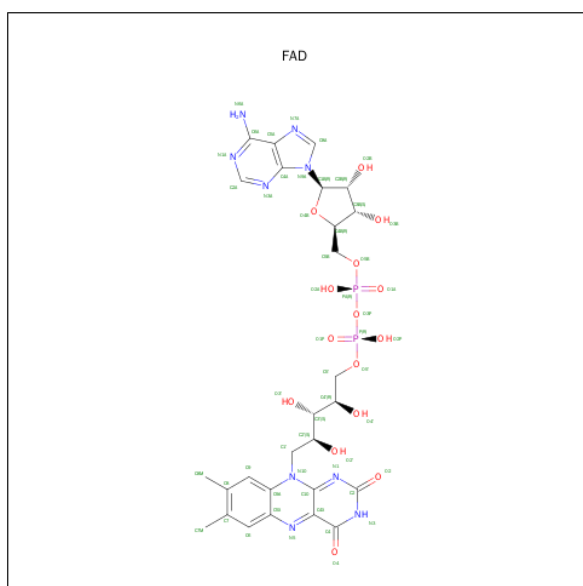
Mol	Chain	Residues	Atoms			ZeroOcc	AltConf
2	A	1	Total	Fe	S	0	0
			4	2	2		

Continued on next page...

Continued from previous page...

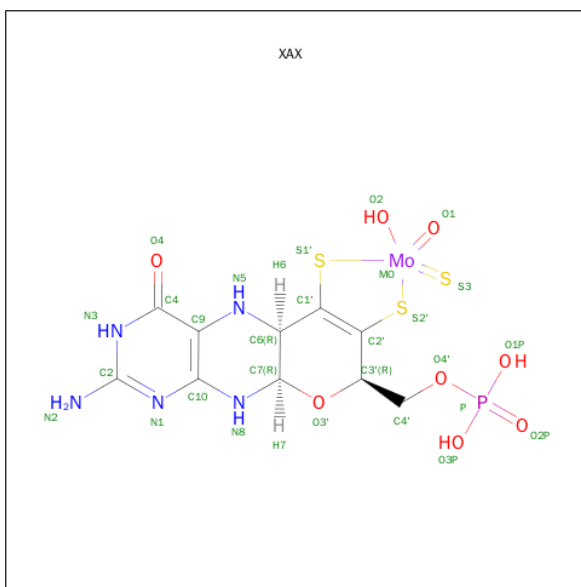
Mol	Chain	Residues	Atoms			ZeroOcc	AltConf
2	A	1	Total	Fe	S	0	0
			4	2	2		
2	B	1	Total	Fe	S	0	0
			4	2	2		
2	B	1	Total	Fe	S	0	0
			4	2	2		

- Molecule 3 is FLAVIN-ADENINE DINUCLEOTIDE (three-letter code: FAD) (formula: $C_{27}H_{33}N_9O_{15}P_2$).



Mol	Chain	Residues	Atoms					ZeroOcc	AltConf
3	A	1	Total	C	N	O	P	0	0
			53	27	9	15	2		
3	B	1	Total	C	N	O	P	0	0
			53	27	9	15	2		

- Molecule 4 is {[(5AR,8R,9AR)-2-AMINO-4-OXO-6,7-DI(SULFANYL-KAPPAS)-3,5,5A,8,9A,10-HEXAHYDRO-4H-PYRANO[3,2-G]PTERIDIN-8-YL] METHYL DIHYDROGENATO(2-) PHOSPHATE}(HYDROXY)OXO(THIOXO)MOLYBDENUM (three-letter code: XAX) (formula: $C_{10}H_{13}MoN_5O_8PS_3$).

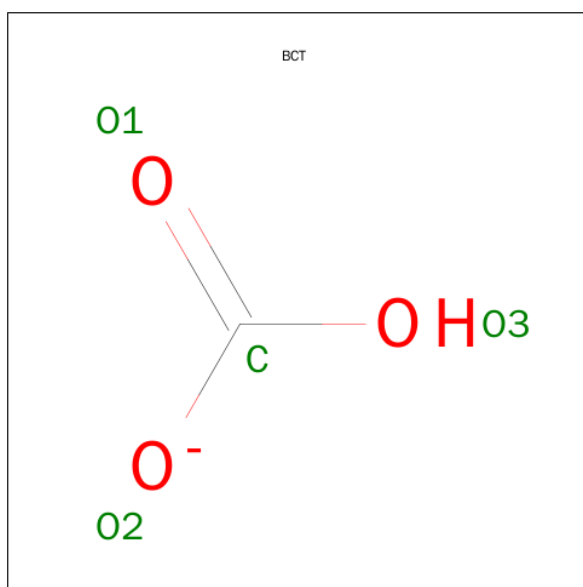


Mol	Chain	Residues	Atoms							ZeroOcc	AltConf
4	A	1	Total	C	Mo	N	O	P	S	0	0
			28	10	1	5	8	1	3		
4	B	1	Total	C	Mo	N	O	P	S	0	0
			28	10	1	5	8	1	3		

- Molecule 5 is CALCIUM ION (three-letter code: CA) (formula: Ca).

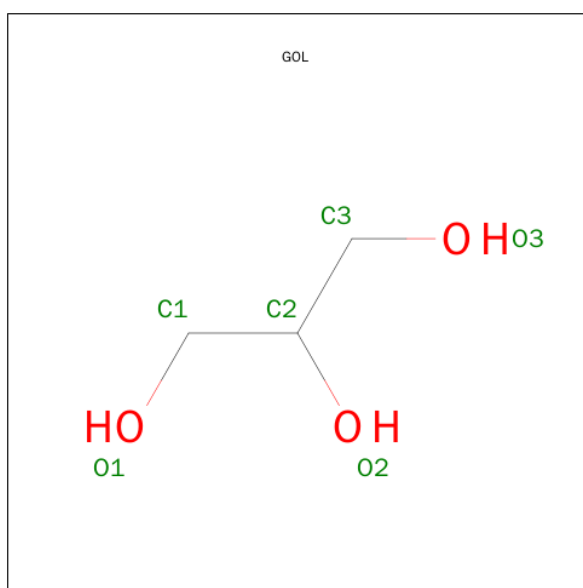
Mol	Chain	Residues	Atoms		ZeroOcc	AltConf
5	B	1	Total	Ca	0	0
			1	1		
5	A	1	Total	Ca	0	0
			1	1		

- Molecule 6 is BICARBONATE ION (three-letter code: BCT) (formula: CHO₃).



Mol	Chain	Residues	Atoms			ZeroOcc	AltConf
6	A	1	Total	C	O	0	0
			4	1	3		
6	B	1	Total	C	O	0	0
			4	1	3		

- Molecule 7 is GLYCEROL (three-letter code: GOL) (formula: $C_3H_8O_3$).



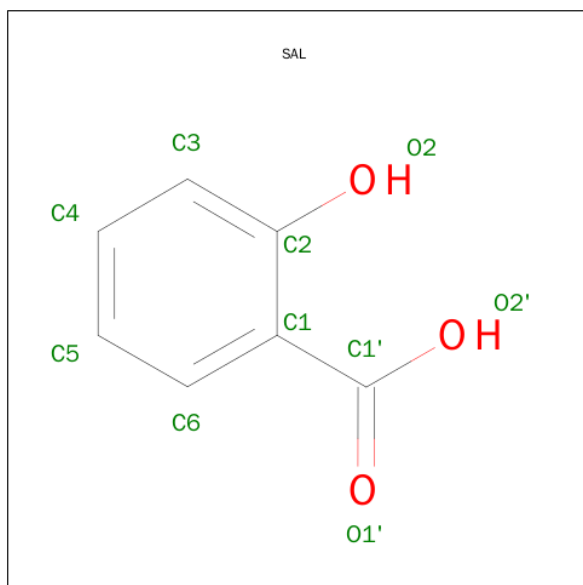
Mol	Chain	Residues	Atoms			ZeroOcc	AltConf
7	A	1	Total	C	O	0	0
			6	3	3		
7	A	1	Total	C	O	0	0
			6	3	3		

Continued on next page...

Continued from previous page...

Mol	Chain	Residues	Atoms			ZeroOcc	AltConf
7	A	1	Total	C	O	0	0
			6	3	3		
7	B	1	Total	C	O	0	0
			6	3	3		
7	B	1	Total	C	O	0	0
			6	3	3		

- Molecule 8 is 2-HYDROXYBENZOIC ACID (three-letter code: SAL) (formula: C₇H₆O₃).



Mol	Chain	Residues	Atoms			ZeroOcc	AltConf
8	A	1	Total	C	O	0	0
			10	7	3		
8	B	1	Total	C	O	0	0
			10	7	3		

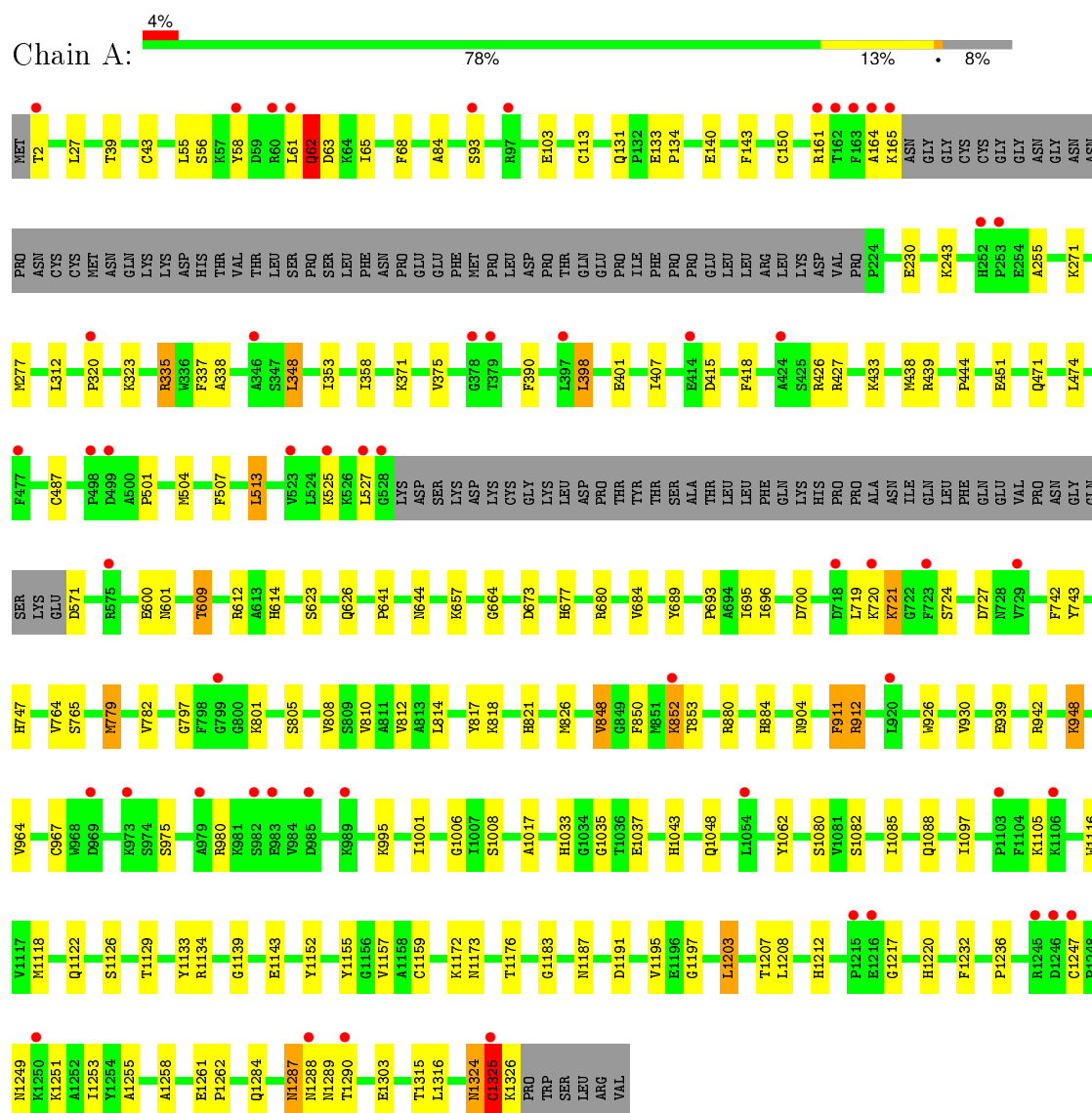
- Molecule 9 is water.

Mol	Chain	Residues	Atoms		ZeroOcc	AltConf
9	A	367	Total	O	0	0
			367	367		
9	B	283	Total	O	0	0
			283	283		

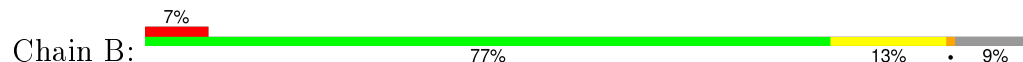
3 Residue-property plots

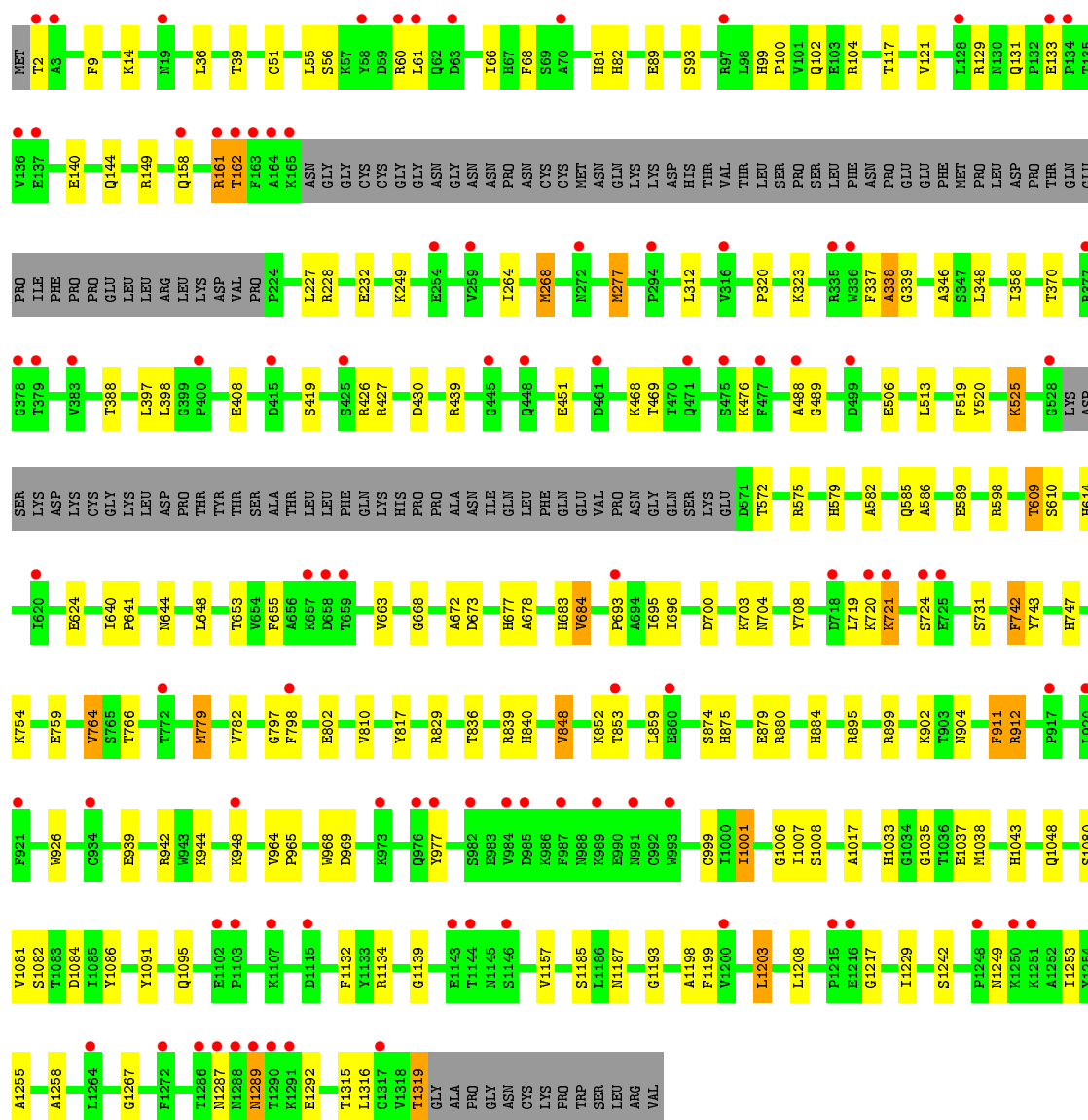
These plots are drawn for all protein, RNA and DNA chains in the entry. The first graphic for a chain summarises the proportions of errors displayed in the second graphic. The second graphic shows the sequence view annotated by issues in geometry and electron density. Residues are color-coded according to the number of geometric quality criteria for which they contain at least one outlier: green = 0, yellow = 1, orange = 2 and red = 3 or more. A red dot above a residue indicates a poor fit to the electron density ($RSRZ > 2$). Stretches of 2 or more consecutive residues without any outlier are shown as a green connector. Residues present in the sample, but not in the model, are shown in grey.

- Molecule 1: Xanthine dehydrogenase/oxidase



- Molecule 1: Xanthine dehydrogenase/oxidase





4 Data and refinement statistics

Property	Value	Source
Space group	P 1 21 1	Depositor
Cell constants a, b, c, α , β , γ	133.20 Å 72.97 Å 142.26 Å 90.00° 98.84° 90.00°	Depositor
Resolution (Å)	38.13 – 2.30 38.14 – 2.30	Depositor EDS
% Data completeness (in resolution range)	99.3 (38.13-2.30) 99.3 (38.14-2.30)	Depositor EDS
R_{merge}	(Not available)	Depositor
R_{sym}	(Not available)	Depositor
$\langle I/\sigma(I) \rangle$ ¹	3.59 (at 2.31 Å)	Xtriage
Refinement program	REFMAC 5.5.0110	Depositor
R, R_{free}	0.215 , 0.279 0.216 , 0.278	Depositor DCC
R_{free} test set	5953 reflections (5.27%)	DCC
Wilson B-factor (Å ²)	29.5	Xtriage
Anisotropy	0.159	Xtriage
Bulk solvent k_{sol} (e/Å ³), B_{sol} (Å ²)	0.38 , 47.1	EDS
Estimated twinning fraction	No twinning to report.	Xtriage
L-test for twinning ²	$\langle L \rangle = 0.46$, $\langle L^2 \rangle = 0.29$	Xtriage
Outliers	0 of 118829 reflections	Xtriage
F_o, F_c correlation	0.93	EDS
Total number of atoms	19797	wwPDB-VP
Average B, all atoms (Å ²)	28.0	wwPDB-VP

Xtriage's analysis on translational NCS is as follows: *The largest off-origin peak in the Patterson function is 3.09% of the height of the origin peak. No significant pseudotranslation is detected.*

¹Intensities estimated from amplitudes.

²Theoretical values of $\langle |L| \rangle$, $\langle L^2 \rangle$ for acentric reflections are 0.5, 0.375 respectively for untwinned datasets, and 0.333, 0.2 for perfectly twinned datasets.

5 Model quality [i](#)

5.1 Standard geometry [i](#)

Bond lengths and bond angles in the following residue types are not validated in this section: XAX, GOL, SAL, CA, FES, BCT, FAD

The Z score for a bond length (or angle) is the number of standard deviations the observed value is removed from the expected value. A bond length (or angle) with $|Z| > 5$ is considered an outlier worth inspection. RMSZ is the root-mean-square of all Z scores of the bond lengths (or angles).

Mol	Chain	Bond lengths		Bond angles	
		RMSZ	# Z >5	RMSZ	# Z >5
1	A	0.71	0/9675	0.75	3/13085 (0.0%)
1	B	0.67	0/9631	0.73	6/13026 (0.0%)
All	All	0.69	0/19306	0.74	9/26111 (0.0%)

There are no bond length outliers.

The worst 5 of 9 bond angle outliers are listed below:

Mol	Chain	Res	Type	Atoms	Z	Observed(°)	Ideal(°)
1	B	839	ARG	NE-CZ-NH2	-8.22	116.19	120.30
1	B	839	ARG	NE-CZ-NH1	5.81	123.21	120.30
1	B	513	LEU	CA-CB-CG	5.71	128.44	115.30
1	A	398	LEU	CA-CB-CG	5.65	128.29	115.30
1	B	1203	LEU	CA-CB-CG	5.54	128.05	115.30

There are no chirality outliers.

There are no planarity outliers.

5.2 Too-close contacts [i](#)

In the following table, the Non-H and H(model) columns list the number of non-hydrogen atoms and hydrogen atoms in the chain respectively. The H(added) column lists the number of hydrogen atoms added and optimized by MolProbity. The Clashes column lists the number of clashes within the asymmetric unit, whereas Symm-Clashes lists symmetry related clashes.

Mol	Chain	Non-H	H(model)	H(added)	Clashes	Symm-Clashes
1	A	9476	0	9483	112	0
1	B	9433	0	9440	113	0
2	A	8	0	0	0	0
2	B	8	0	0	0	0

Continued on next page...

Continued from previous page...

Mol	Chain	Non-H	H(model)	H(added)	Clashes	Symm-Clashes
3	A	53	0	31	1	0
3	B	53	0	31	2	0
4	A	28	0	10	1	0
4	B	28	0	10	3	0
5	A	1	0	0	0	0
5	B	1	0	0	0	0
6	A	4	0	0	0	0
6	B	4	0	0	0	0
7	A	18	0	24	1	0
7	B	12	0	16	0	0
8	A	10	0	5	0	0
8	B	10	0	4	1	0
9	A	367	0	0	5	0
9	B	283	0	0	5	0
All	All	19797	0	19054	222	0

The all-atom clashscore is defined as the number of clashes found per 1000 atoms (including hydrogen atoms). The all-atom clashscore for this structure is 6.

The worst 5 of 222 close contacts within the same asymmetric unit are listed below, sorted by their clash magnitude.

Atom-1	Atom-2	Interatomic distance (Å)	Clash overlap (Å)
1:A:884:HIS:HE1	1:A:1006:GLY:H	1.17	0.92
1:A:995:LYS:NZ	1:A:1284:GLN:HE21	1.68	0.92
1:A:995:LYS:HZ1	1:A:1284:GLN:HE21	1.20	0.89
1:A:131:GLN:HE21	1:A:133:GLU:H	1.18	0.89
1:A:695:ILE:H	1:A:904:ASN:HD22	1.21	0.88

There are no symmetry-related clashes.

5.3 Torsion angles [i](#)

5.3.1 Protein backbone [i](#)

In the following table, the Percentiles column shows the percent Ramachandran outliers of the chain as a percentile score with respect to all X-ray entries followed by that with respect to entries of similar resolution.

The Analysed column shows the number of residues for which the backbone conformation was analysed, and the total number of residues.

Mol	Chain	Analysed	Favoured	Allowed	Outliers	Percentiles	
1	A	1219/1332 (92%)	1162 (95%)	46 (4%)	11 (1%)	21	24
1	B	1212/1332 (91%)	1147 (95%)	58 (5%)	7 (1%)	30	36
All	All	2431/2664 (91%)	2309 (95%)	104 (4%)	18 (1%)	26	31

5 of 18 Ramachandran outliers are listed below:

Mol	Chain	Res	Type
1	A	1325	CYS
1	A	335	ARG
1	A	721	LYS
1	A	912	ARG
1	A	1008	SER

5.3.2 Protein sidechains ⓘ

In the following table, the Percentiles column shows the percent sidechain outliers of the chain as a percentile score with respect to all X-ray entries followed by that with respect to entries of similar resolution.

The Analysed column shows the number of residues for which the sidechain conformation was analysed, and the total number of residues.

Mol	Chain	Analysed	Rotameric	Outliers	Percentiles	
1	A	1030/1128 (91%)	982 (95%)	48 (5%)	32	43
1	B	1026/1128 (91%)	982 (96%)	44 (4%)	35	47
All	All	2056/2256 (91%)	1964 (96%)	92 (4%)	34	46

5 of 92 residues with a non-rotameric sidechain are listed below:

Mol	Chain	Res	Type
1	A	1001	ILE
1	B	140	GLU
1	B	1203	LEU
1	A	1134	ARG
1	A	1290	THR

Some sidechains can be flipped to improve hydrogen bonding and reduce clashes. 5 of 36 such sidechains are listed below:

Mol	Chain	Res	Type
1	A	1287	ASN

Continued on next page...

Continued from previous page...

Mol	Chain	Res	Type
1	B	146	ASN
1	B	1108	ASN
1	B	131	GLN
1	B	473	GLN

5.3.3 RNA [i](#)

There are no RNA molecules in this entry.

5.4 Non-standard residues in protein, DNA, RNA chains [i](#)

There are no non-standard protein/DNA/RNA residues in this entry.

5.5 Carbohydrates [i](#)

There are no carbohydrates in this entry.

5.6 Ligand geometry [i](#)

Of 19 ligands modelled in this entry, 2 are monoatomic - leaving 17 for Mogul analysis.

In the following table, the Counts columns list the number of bonds (or angles) for which Mogul statistics could be retrieved, the number of bonds (or angles) that are observed in the model and the number of bonds (or angles) that are defined in the chemical component dictionary. The Link column lists molecule types, if any, to which the group is linked. The Z score for a bond length (or angle) is the number of standard deviations the observed value is removed from the expected value. A bond length (or angle) with $|Z| > 2$ is considered an outlier worth inspection. RMSZ is the root-mean-square of all Z scores of the bond lengths (or angles).

Mol	Type	Chain	Res	Link	Bond lengths			Bond angles		
					Counts	RMSZ	$\# Z > 2$	Counts	RMSZ	$\# Z > 2$
2	FES	A	1333	1	0,4,4	0.00	-	0,4,4	0.00	-
2	FES	A	1334	1	0,4,4	0.00	-	0,4,4	0.00	-
3	FAD	A	1335	-	48,58,58	1.18	5 (10%)	54,89,89	2.10	10 (18%)
6	BCT	A	1337	-	0,3,3	0.00	-	0,3,3	0.00	-
7	GOL	A	1338	-	5,5,5	0.47	0	5,5,5	0.70	0
7	GOL	A	1339	-	5,5,5	0.48	0	5,5,5	0.74	0
7	GOL	A	1340	-	5,5,5	0.23	0	5,5,5	0.93	0
8	SAL	A	1341	-	7,10,10	1.32	1 (14%)	10,13,13	1.39	2 (20%)
4	XAX	A	3003	-	22,31,31	2.30	5 (22%)	19,52,52	2.24	7 (36%)

Mol	Type	Chain	Res	Link	Bond lengths			Bond angles		
					Counts	RMSZ	# Z > 2	Counts	RMSZ	# Z > 2
2	FES	B	1333	1	0,4,4	0.00	-	0,4,4	0.00	-
2	FES	B	1334	1	0,4,4	0.00	-	0,4,4	0.00	-
3	FAD	B	1335	-	48,58,58	1.32	4 (8%)	54,89,89	2.12	10 (18%)
6	BCT	B	1337	-	0,3,3	0.00	-	0,3,3	0.00	-
7	GOL	B	1338	-	5,5,5	0.38	0	5,5,5	0.44	0
7	GOL	B	1339	-	5,5,5	0.21	0	5,5,5	0.28	0
8	SAL	B	1340	-	7,10,10	1.14	1 (14%)	10,13,13	1.37	2 (20%)
4	XAX	B	3003	-	22,31,31	2.18	6 (27%)	19,52,52	2.25	7 (36%)

In the following table, the Chirals column lists the number of chiral outliers, the number of chiral centers analysed, the number of these observed in the model and the number defined in the chemical component dictionary. Similar counts are reported in the Torsion and Rings columns. '-' means no outliers of that kind were identified.

Mol	Type	Chain	Res	Link	Chirals	Torsions	Rings
2	FES	A	1333	1	-	0/0/4/4	0/1/1/1
2	FES	A	1334	1	-	0/0/4/4	0/1/1/1
3	FAD	A	1335	-	-	0/30/50/50	0/6/6/6
6	BCT	A	1337	-	-	0/0/0/0	0/0/0/0
7	GOL	A	1338	-	-	0/4/4/4	0/0/0/0
7	GOL	A	1339	-	-	0/4/4/4	0/0/0/0
7	GOL	A	1340	-	-	0/4/4/4	0/0/0/0
8	SAL	A	1341	-	-	0/0/4/4	0/1/1/1
4	XAX	A	3003	-	-	0/6/46/46	0/4/4/4
2	FES	B	1333	1	-	0/0/4/4	0/1/1/1
2	FES	B	1334	1	-	0/0/4/4	0/1/1/1
3	FAD	B	1335	-	-	0/30/50/50	0/6/6/6
6	BCT	B	1337	-	-	0/0/0/0	0/0/0/0
7	GOL	B	1338	-	-	0/4/4/4	0/0/0/0
7	GOL	B	1339	-	-	0/4/4/4	0/0/0/0
8	SAL	B	1340	-	-	0/0/4/4	0/1/1/1
4	XAX	B	3003	-	-	0/6/46/46	0/4/4/4

The worst 5 of 22 bond length outliers are listed below:

Mol	Chain	Res	Type	Atoms	Z	Observed(Å)	Ideal(Å)
4	B	3003	XAX	C1'-S1'	-4.96	1.66	1.76
4	A	3003	XAX	C1'-S1'	-4.73	1.67	1.76
4	B	3003	XAX	C2'-S2'	-4.54	1.67	1.76
4	A	3003	XAX	C2'-S2'	-3.70	1.69	1.76
3	A	1335	FAD	C10-N10	-2.05	1.36	1.39

The worst 5 of 38 bond angle outliers are listed below:

Mol	Chain	Res	Type	Atoms	Z	Observed(°)	Ideal(°)
3	B	1335	FAD	N3A-C2A-N1A	-11.17	120.34	128.89
3	A	1335	FAD	N3A-C2A-N1A	-10.62	120.76	128.89
4	A	3003	XAX	C10-C9-N5	-4.25	113.49	118.85
4	B	3003	XAX	C4-C9-C10	-4.06	110.89	114.56
4	B	3003	XAX	N3-C2-N1	-3.26	120.19	125.53

There are no chirality outliers.

There are no torsion outliers.

There are no ring outliers.

6 monomers are involved in 9 short contacts:

Mol	Chain	Res	Type	Clashes	Symm-Clashes
3	A	1335	FAD	1	0
7	A	1338	GOL	1	0
4	A	3003	XAX	1	0
3	B	1335	FAD	2	0
8	B	1340	SAL	1	0
4	B	3003	XAX	3	0

5.7 Other polymers [i](#)

There are no such residues in this entry.

5.8 Polymer linkage issues [i](#)

There are no chain breaks in this entry.

6 Fit of model and data [i](#)

6.1 Protein, DNA and RNA chains [i](#)

In the following table, the column labelled ‘#RSRZ> 2’ contains the number (and percentage) of RSRZ outliers, followed by percent RSRZ outliers for the chain as percentile scores relative to all X-ray entries and entries of similar resolution. The OWAB column contains the minimum, median, 95th percentile and maximum values of the occupancy-weighted average B-factor per residue. The column labelled ‘Q< 0.9’ lists the number of (and percentage) of residues with an average occupancy less than 0.9.

Mol	Chain	Analysed	<RSRZ>	#RSRZ>2		OWAB(Å ²)	Q<0.9
1	A	1225/1332 (91%)	0.48	54 (4%)	38 47	12, 25, 39, 60	0
1	B	1218/1332 (91%)	0.64	94 (7%)	16 23	17, 29, 45, 63	0
All	All	2443/2664 (91%)	0.56	148 (6%)	25 33	12, 27, 42, 63	0

The worst 5 of 148 RSRZ outliers are listed below:

Mol	Chain	Res	Type	RSRZ
1	B	1287	ASN	8.5
1	A	164	ALA	6.7
1	B	165	LYS	6.3
1	A	162	THR	5.8
1	B	2	THR	5.6

6.2 Non-standard residues in protein, DNA, RNA chains [i](#)

There are no non-standard protein/DNA/RNA residues in this entry.

6.3 Carbohydrates [i](#)

There are no carbohydrates in this entry.

6.4 Ligands [i](#)

In the following table, the Atoms column lists the number of modelled atoms in the group and the number defined in the chemical component dictionary. LLDF column lists the quality of electron density of the group with respect to its neighbouring residues in protein, DNA or RNA chains. The B-factors column lists the minimum, median, 95th percentile and maximum values of B factors of atoms in the group. The column labelled ‘Q< 0.9’ lists the number of atoms with occupancy less than 0.9.

Mol	Type	Chain	Res	Atoms	RSCC	RSR	LLDF	B-factors(\AA^2)	Q<0.9
7	GOL	A	1338	6/6	0.89	0.21	4.14	22,26,27,28	0
8	SAL	B	1340	10/10	0.89	0.24	3.69	37,39,41,44	0
8	SAL	A	1341	10/10	0.90	0.25	2.88	22,25,28,29	0
7	GOL	B	1338	6/6	0.92	0.21	2.46	20,24,25,26	0
7	GOL	A	1340	6/6	0.84	0.22	1.71	33,35,38,39	0
7	GOL	A	1339	6/6	0.94	0.15	0.35	27,28,29,30	0
6	BCT	A	1337	4/4	0.96	0.18	0.17	14,14,15,17	0
6	BCT	B	1337	4/4	0.98	0.19	0.02	24,24,24,24	0
4	XAX	B	3003	28/28	0.97	0.17	-0.32	20,22,26,33	0
3	FAD	A	1335	53/53	0.96	0.15	-0.82	14,19,25,28	0
5	CA	A	1336	1/1	0.99	0.12	-0.84	26,26,26,26	0
3	FAD	B	1335	53/53	0.95	0.14	-0.94	19,27,31,33	0
7	GOL	B	1339	6/6	0.94	0.12	-1.22	21,25,27,30	0
4	XAX	A	3003	28/28	0.98	0.13	-1.39	16,20,26,33	0
2	FES	B	1333	4/4	0.98	0.11	-1.84	20,20,21,22	0
2	FES	A	1333	4/4	0.98	0.08	-1.85	18,20,21,21	0
2	FES	A	1334	4/4	0.99	0.10	-2.15	18,18,18,19	0
2	FES	B	1334	4/4	0.97	0.11	-2.30	18,21,21,22	0
5	CA	B	1336	1/1	0.99	0.09	-4.19	22,22,22,22	0

6.5 Other polymers [i](#)

There are no such residues in this entry.