



# Full wwPDB X-ray Structure Validation Report ⓘ

Feb 1, 2016 – 02:55 PM GMT

PDB ID : 4AXM  
Title : TRIAZINE CATHEPSIN INHIBITOR COMPLEX  
Authors : Ehmke, V.; Diederich, F.; Banner, D.W.; Benz, J.  
Deposited on : 2012-06-13  
Resolution : 2.80 Å(reported)

This is a Full wwPDB X-ray Structure Validation Report for a publicly released PDB entry.  
We welcome your comments at [validation@mail.wwpdb.org](mailto:validation@mail.wwpdb.org)  
A user guide is available at  
<http://wwpdb.org/validation/2016/XrayValidationReportHelp>  
with specific help available everywhere you see the ⓘ symbol.

---

The following versions of software and data (see [references ⓘ](#)) were used in the production of this report:

MolProbity : 4.02b-467  
Mogul : 1.7 (RC4), CSD as536be (2015)  
Xtriage (Phenix) : 1.9-1692  
EDS : rb-20026688  
Percentile statistics : 20151230.v01 (using entries in the PDB archive December 30th 2015)  
Refmac : 5.8.0135  
CCP4 : 6.5.0  
Ideal geometry (proteins) : Engh & Huber (2001)  
Ideal geometry (DNA, RNA) : Parkinson et al. (1996)  
Validation Pipeline (wwPDB-VP) : trunk26865

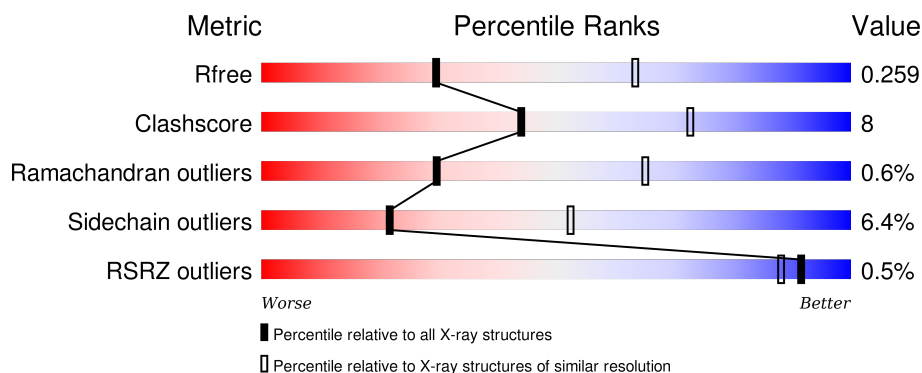
# 1 Overall quality at a glance ⓘ

The following experimental techniques were used to determine the structure:

## *X-RAY DIFFRACTION*

The reported resolution of this entry is 2.80 Å.

Percentile scores (ranging between 0-100) for global validation metrics of the entry are shown in the following graphic. The table shows the number of entries on which the scores are based.



Metric	Whole archive (#Entries)	Similar resolution (#Entries, resolution range(Å))
$R_{free}$	91344	2393 (2.80-2.80)
Clashscore	102246	2827 (2.80-2.80)
Ramachandran outliers	100387	2782 (2.80-2.80)
Sidechain outliers	100360	2784 (2.80-2.80)
RSRZ outliers	91569	2404 (2.80-2.80)

The table below summarises the geometric issues observed across the polymeric chains and their fit to the electron density. The red, orange, yellow and green segments on the lower bar indicate the fraction of residues that contain outliers for  $\geq 3$ , 2, 1 and 0 types of geometric quality criteria. A grey segment represents the fraction of residues that are not modelled. The numeric value for each fraction is indicated below the corresponding segment, with a dot representing fractions  $\leq 5\%$ . The upper red bar (where present) indicates the fraction of residues that have poor fit to the electron density. The numeric value is given above the bar.

Mol	Chain	Length	Quality of chain
1	A	220	<div> <div style="width: 100%; height: 10px; background: linear-gradient(to right, red 1%, orange 1%, yellow 19%, green 78%, grey 4%);"></div> <div style="display: flex; justify-content: space-between; width: 100%;"> <span>78%</span> <span>19%</span> </div> </div>
1	B	220	<div> <div style="width: 100%; height: 10px; background: linear-gradient(to right, yellow 18%, green 80%, grey 2%);"></div> <div style="display: flex; justify-content: space-between; width: 100%;"> <span>80%</span> <span>18%</span> </div> </div>
1	F	220	<div> <div style="width: 100%; height: 10px; background: linear-gradient(to right, yellow 16%, green 80%, grey 4%);"></div> <div style="display: flex; justify-content: space-between; width: 100%;"> <span>80%</span> <span>16%</span> </div> </div>
1	I	220	<div> <div style="width: 100%; height: 10px; background: linear-gradient(to right, yellow 18%, green 79%, orange 1%, red 2%, grey 2%);"></div> <div style="display: flex; justify-content: space-between; width: 100%;"> <span>79%</span> <span>18%</span> </div> </div>
1	L	220	<div> <div style="width: 100%; height: 10px; background: linear-gradient(to right, yellow 11%, green 85%, grey 4%);"></div> <div style="display: flex; justify-content: space-between; width: 100%;"> <span>85%</span> <span>11%</span> </div> </div>

*Continued on next page...*

*Continued from previous page...*

Mol	Chain	Length	Quality of chain
1	O	220	<div> <div></div> <div>%</div> <div>65%</div> <div>31%</div> <div>..</div> </div>

The following table lists non-polymeric compounds, carbohydrate monomers and non-standard residues in protein, DNA, RNA chains that are outliers for geometric or electron-density-fit criteria:

Mol	Type	Chain	Res	Chirality	Geometry	Clashes	Electron density
2	GOL	F	1221	-	-	-	X
3	V65	F	1222	-	-	-	X
3	V65	I	1222	-	-	-	X
3	V65	L	1222	-	-	-	X
3	V65	O	1222	-	-	X	X

## 2 Entry composition [i](#)

There are 4 unique types of molecules in this entry. The entry contains 10834 atoms, of which 0 are hydrogens and 0 are deuteriums.

In the tables below, the ZeroOcc column contains the number of atoms modelled with zero occupancy, the AltConf column contains the number of residues with at least one atom in alternate conformation and the Trace column contains the number of residues modelled with at most 2 atoms.

- Molecule 1 is a protein called CATHEPSIN L1.

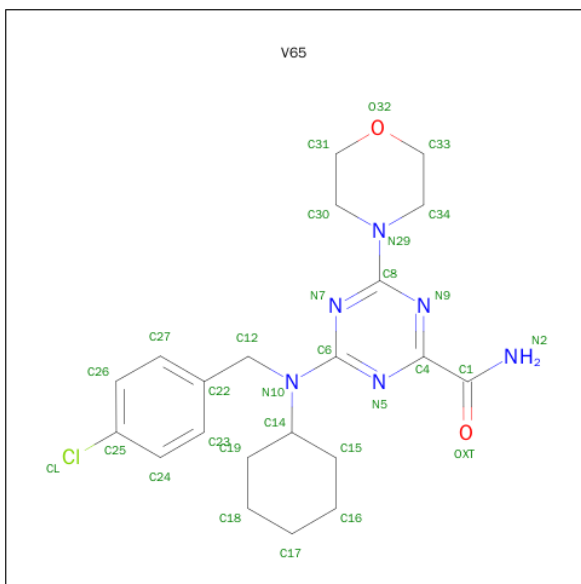
Mol	Chain	Residues	Atoms					ZeroOcc	AltConf	Trace
1	A	218	Total	C	N	O	S	0	7	0
			1742	1091	289	348	14			
1	B	219	Total	C	N	O	S	0	7	0
			1748	1095	290	349	14			
1	F	216	Total	C	N	O	S	0	7	0
			1728	1084	287	343	14			
1	I	217	Total	C	N	O	S	0	7	0
			1735	1088	288	345	14			
1	L	216	Total	C	N	O	S	0	7	0
			1728	1084	287	343	14			
1	O	216	Total	C	N	O	S	0	7	0
			1728	1084	287	343	14			

- Molecule 2 is GLYCEROL (three-letter code: GOL) (formula:  $C_3H_8O_3$ ).



Mol	Chain	Residues	Atoms			ZeroOcc	AltConf
2	A	1	Total	C	O	0	0
			6	3	3		
2	B	1	Total	C	O	0	0
			6	3	3		
2	F	1	Total	C	O	0	0
			6	3	3		
2	I	1	Total	C	O	0	0
			6	3	3		
2	L	1	Total	C	O	0	0
			6	3	3		
2	O	1	Total	C	O	0	0
			6	3	3		

- Molecule 3 is 4-[(4-CHLOROBENZYL)(CYCLOHEXYL)AMINO]-6-MORPHOLIN-4-YL-1,3,5-TRIAZINE-2-CARBOXAMIDE (three-letter code: V65) (formula: C<sub>21</sub>H<sub>27</sub>ClN<sub>6</sub>O<sub>2</sub>).



Mol	Chain	Residues	Atoms					ZeroOcc	AltConf
3	A	1	Total	C	Cl	N	O	0	0
			29	21	1	6	1		
3	B	1	Total	C	Cl	N	O	0	0
			29	21	1	6	1		
3	F	1	Total	C	Cl	N	O	0	0
			29	21	1	6	1		
3	I	1	Total	C	Cl	N	O	0	0
			29	21	1	6	1		
3	L	1	Total	C	Cl	N	O	0	0
			29	21	1	6	1		

*Continued on next page...*

*Continued from previous page...*

Mol	Chain	Residues	Atoms					ZeroOcc	AltConf
3	O	1	Total	C	Cl	N	O	0	0
			29	21	1	6	1		

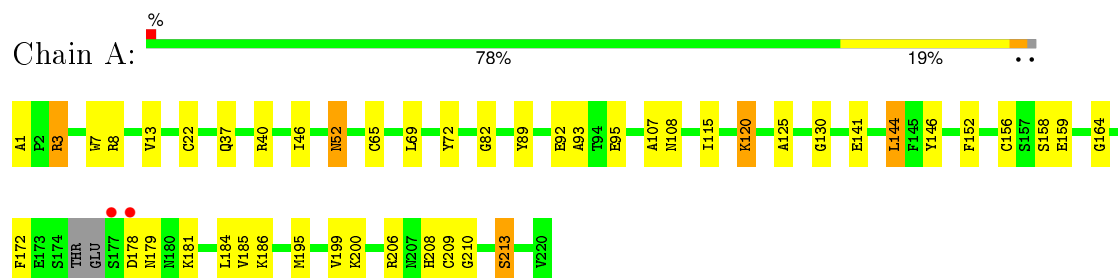
- Molecule 4 is water.

Mol	Chain	Residues	Atoms		ZeroOcc	AltConf
4	A	50	Total	O	0	0
			50	50		
4	B	40	Total	O	0	0
			40	40		
4	F	45	Total	O	0	0
			45	45		
4	I	37	Total	O	0	0
			37	37		
4	L	18	Total	O	0	0
			18	18		
4	O	25	Total	O	0	0
			25	25		

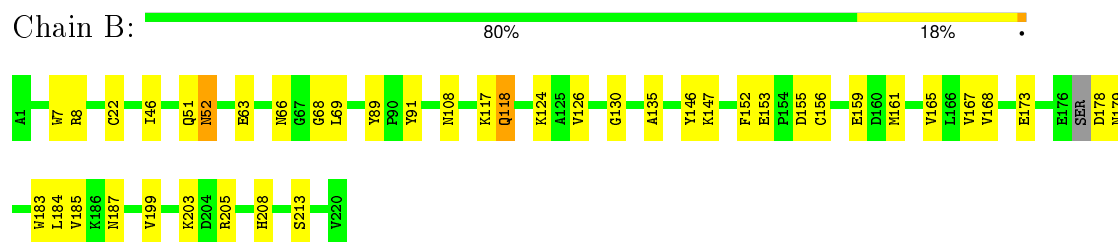
### 3 Residue-property plots [i](#)

These plots are drawn for all protein, RNA and DNA chains in the entry. The first graphic for a chain summarises the proportions of errors displayed in the second graphic. The second graphic shows the sequence view annotated by issues in geometry and electron density. Residues are color-coded according to the number of geometric quality criteria for which they contain at least one outlier: green = 0, yellow = 1, orange = 2 and red = 3 or more. A red dot above a residue indicates a poor fit to the electron density ( $\text{RSRZ} > 2$ ). Stretches of 2 or more consecutive residues without any outlier are shown as a green connector. Residues present in the sample, but not in the model, are shown in grey.

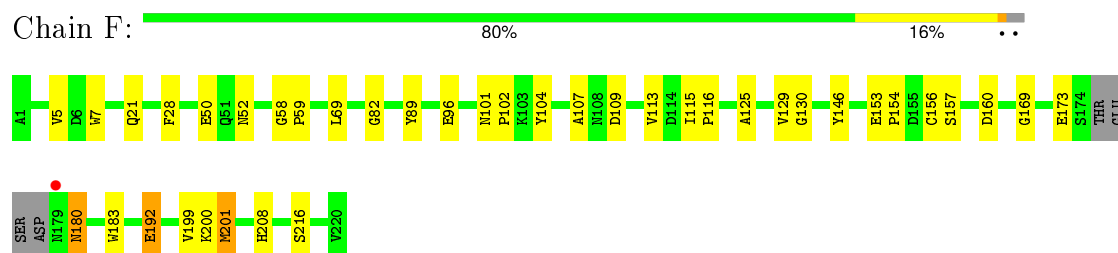
#### • Molecule 1: CATHEPSIN L1



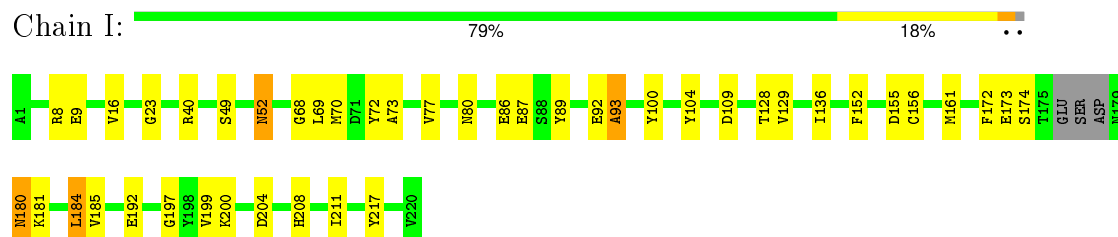
#### • Molecule 1: CATHEPSIN L1




#### • Molecule 1: CATHEPSIN L1



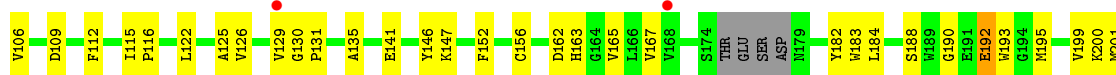
#### • Molecule 1: CATHEPSIN L1



## ● Molecule 1: CATHEPSIN L1

Chain L:  85% 11% ..

## ● Molecule 1: CATHEPSIN L1

Chain O:  65% 31% ..



## 4 Data and refinement statistics

Property	Value	Source
Space group	P 21 21 21	Depositor
Cell constants a, b, c, $\alpha$ , $\beta$ , $\gamma$	85.84Å 134.78Å 140.92Å 90.00° 90.00° 90.00°	Depositor
Resolution (Å)	46.97 – 2.80 44.36 – 2.80	Depositor EDS
% Data completeness (in resolution range)	95.8 (46.97-2.80) 95.9 (44.36-2.80)	Depositor EDS
$R_{merge}$	0.19	Depositor
$R_{sym}$	(Not available)	Depositor
$\langle I/\sigma(I) \rangle$ <sup>1</sup>	1.87 (at 2.81Å)	Xtriage
Refinement program	REFMAC 5.7.0025	Depositor
R, $R_{free}$	0.188 , 0.257 0.188 , 0.259	Depositor DCC
$R_{free}$ test set	2030 reflections (5.44%)	DCC
Wilson B-factor (Å <sup>2</sup> )	51.6	Xtriage
Anisotropy	0.196	Xtriage
Bulk solvent $k_{sol}$ (e/Å <sup>3</sup> ), $B_{sol}$ (Å <sup>2</sup> )	0.30 , 41.0	EDS
Estimated twinning fraction	0.013 for -h,l,k	Xtriage
L-test for twinning <sup>2</sup>	$\langle  L  \rangle = 0.48$ , $\langle L^2 \rangle = 0.31$	Xtriage
Outliers	0 of 39290 reflections	Xtriage
$F_o, F_c$ correlation	0.94	EDS
Total number of atoms	10834	wwPDB-VP
Average B, all atoms (Å <sup>2</sup> )	57.0	wwPDB-VP

Xtriage's analysis on translational NCS is as follows: *The largest off-origin peak in the Patterson function is 7.21% of the height of the origin peak. No significant pseudotranslation is detected.*

<sup>1</sup>Intensities estimated from amplitudes.

<sup>2</sup>Theoretical values of  $\langle |L| \rangle$ ,  $\langle L^2 \rangle$  for acentric reflections are 0.5, 0.375 respectively for untwinned datasets, and 0.333, 0.2 for perfectly twinned datasets.

## 5 Model quality

### 5.1 Standard geometry

Bond lengths and bond angles in the following residue types are not validated in this section: GOL, V65

The Z score for a bond length (or angle) is the number of standard deviations the observed value is removed from the expected value. A bond length (or angle) with  $|Z| > 5$  is considered an outlier worth inspection. RMSZ is the root-mean-square of all Z scores of the bond lengths (or angles).

Mol	Chain	Bond lengths		Bond angles	
		RMSZ	# Z  >5	RMSZ	# Z  >5
1	A	0.58	0/1784	0.73	1/2408 (0.0%)
1	B	0.57	0/1790	0.70	1/2417 (0.0%)
1	F	0.54	0/1770	0.71	0/2389
1	I	0.54	0/1777	0.67	0/2399
1	L	0.49	0/1770	0.68	0/2389
1	O	0.53	0/1770	0.67	0/2389
All	All	0.54	0/10661	0.69	2/14391 (0.0%)

There are no bond length outliers.

All (2) bond angle outliers are listed below:

Mol	Chain	Res	Type	Atoms	Z	Observed(°)	Ideal(°)
1	A	144	LEU	CA-CB-CG	5.53	128.01	115.30
1	B	69	LEU	CA-CB-CG	5.14	127.13	115.30

There are no chirality outliers.

There are no planarity outliers.

### 5.2 Too-close contacts

In the following table, the Non-H and H(model) columns list the number of non-hydrogen atoms and hydrogen atoms in the chain respectively. The H(added) column lists the number of hydrogen atoms added and optimized by MolProbity. The Clashes column lists the number of clashes within the asymmetric unit, whereas Symm-Clashes lists symmetry related clashes.

Mol	Chain	Non-H	H(model)	H(added)	Clashes	Symm-Clashes
1	A	1742	0	1613	31	0
1	B	1748	0	1617	21	0
1	F	1728	0	1604	24	0

*Continued on next page...*

*Continued from previous page...*

Mol	Chain	Non-H	H(model)	H(added)	Clashes	Symm-Clashes
1	I	1735	0	1611	27	0
1	L	1728	0	1604	10	0
1	O	1728	0	1604	44	0
2	A	6	0	8	0	0
2	B	6	0	8	0	0
2	F	6	0	8	0	0
2	I	6	0	8	0	0
2	L	6	0	8	0	0
2	O	6	0	8	0	0
3	A	29	0	27	6	0
3	B	29	0	27	5	0
3	F	29	0	27	3	0
3	I	29	0	27	3	0
3	L	29	0	27	2	0
3	O	29	0	27	12	0
4	A	50	0	0	3	0
4	B	40	0	0	1	0
4	F	45	0	0	0	0
4	I	37	0	0	0	0
4	L	18	0	0	0	0
4	O	25	0	0	2	0
All	All	10834	0	9863	165	0

The all-atom clashscore is defined as the number of clashes found per 1000 atoms (including hydrogen atoms). The all-atom clashscore for this structure is 8.

All (165) close contacts within the same asymmetric unit are listed below, sorted by their clash magnitude.

Atom-1	Atom-2	Interatomic distance (Å)	Clash overlap (Å)
1:A:3:ARG:HH11	1:A:3:ARG:HG2	0.88	1.05
1:A:3:ARG:NH1	1:A:3:ARG:HG2	1.68	0.99
1:A:3:ARG:CG	1:A:3:ARG:HH11	1.77	0.98
1:O:69:LEU:CD2	3:O:1222:V65:H162	1.96	0.96
1:O:69:LEU:HD23	3:O:1222:V65:H162	1.55	0.88
3:A:1222:V65:H192	3:A:1222:V65:N5	1.88	0.86
3:A:1222:V65:H151	3:A:1222:V65:H23	1.60	0.83
1:F:69:LEU:HD23	3:F:1222:V65:H172	1.59	0.83
3:B:1222:V65:H23	3:B:1222:V65:H191	1.62	0.82
1:O:135:ALA:HB2	3:O:1222:V65:H171	1.69	0.73
1:F:69:LEU:CD2	3:F:1222:V65:H172	2.19	0.73
1:I:8:ARG:NH2	1:I:184[A]:LEU:HD21	2.06	0.70

*Continued on next page...*

*Continued from previous page...*

Atom-1	Atom-2	Interatomic distance (Å)	Clash overlap (Å)
1:O:69:LEU:HD23	3:O:1222:V65:C16	2.20	0.70
3:I:1222:V65:H23	3:I:1222:V65:H191	1.73	0.69
1:O:163:HIS:N	3:O:1222:V65:H192	2.08	0.67
1:A:8:ARG:NH2	1:A:184[A]:LEU:HD21	2.11	0.66
1:F:58:GLY:N	1:F:59:PRO:CD	2.59	0.66
1:B:7:TRP:CE2	1:B:130:GLY:HA2	2.32	0.64
1:O:135:ALA:HB1	3:O:1222:V65:H182	1.79	0.63
1:B:146:TYR:CZ	1:B:199:VAL:HG23	2.34	0.62
1:O:19:GLN:HG2	1:O:188:SER:O	2.00	0.61
1:O:152:PHE:CE1	1:O:208[A]:HIS:CE1	2.89	0.60
1:A:195:MET:SD	1:A:200[A]:LYS:HE2	2.43	0.59
1:O:3:ARG:HA	4:O:2001:HOH:O	2.03	0.58
1:B:187:ASN:HB3	4:B:2039:HOH:O	2.04	0.58
1:A:164:GLY:N	3:A:1222:V65:H182	2.19	0.57
1:A:40:ARG:CD	4:A:2015:HOH:O	2.52	0.57
3:A:1222:V65:H151	3:A:1222:V65:C23	2.33	0.57
1:I:68:GLY:O	3:I:1222:V65:H152	2.04	0.57
3:B:1222:V65:N5	3:B:1222:V65:H151	2.20	0.56
1:I:152:PHE:HA	1:I:208[B]:HIS:CE1	2.39	0.56
1:L:117:LYS:HD2	1:L:213:SER:O	2.06	0.56
1:O:135:ALA:CB	3:O:1222:V65:H171	2.35	0.56
1:I:23:GLY:HA3	3:I:1222:V65:H301	1.87	0.56
1:O:193:TRP:HH2	1:O:199:VAL:CG1	2.18	0.56
1:O:141:GLU:HB2	4:O:2018:HOH:O	2.05	0.55
1:B:51:GLN:HB2	1:B:91:TYR:HA	1.89	0.55
1:I:173:GLU:OE2	1:I:200[A]:LYS:NZ	2.39	0.55
3:B:1222:V65:C19	3:B:1222:V65:H23	2.36	0.55
1:A:3:ARG:CG	1:A:3:ARG:NH1	2.47	0.54
1:A:185:VAL:HB	1:A:199:VAL:HG13	1.89	0.54
1:F:153:GLU:O	1:F:208[A]:HIS:CE1	2.60	0.54
1:B:117:LYS:NZ	1:B:213:SER:O	2.38	0.54
1:O:162:ASP:C	3:O:1222:V65:H192	2.28	0.54
1:B:63:GLU:O	1:B:66:ASN:HB2	2.08	0.54
1:I:185:VAL:HB	1:I:199:VAL:HG13	1.89	0.53
1:F:7:TRP:CE2	1:F:130:GLY:HA2	2.42	0.53
1:O:52:ASN:C	1:O:52:ASN:HD22	2.11	0.53
1:O:68:GLY:O	3:O:1222:V65:H151	2.08	0.53
3:L:1222:V65:H23	3:L:1222:V65:H191	1.91	0.52
1:A:37:GLN:HG2	4:A:2012:HOH:O	2.08	0.52
1:A:46:ILE:HD12	1:I:104:TYR:HE2	1.75	0.52
1:L:192[A]:GLU:CD	1:L:192[A]:GLU:H	2.13	0.52

*Continued on next page...*

*Continued from previous page...*

Atom-1	Atom-2	Interatomic distance (Å)	Clash overlap (Å)
1:O:146:TYR:CZ	1:O:199:VAL:HG23	2.45	0.51
1:O:7:TRP:CE2	1:O:130:GLY:HA2	2.45	0.51
1:F:146:TYR:CZ	1:F:199:VAL:HG23	2.46	0.51
1:O:69:LEU:HB2	1:O:72:TYR:CD2	2.46	0.51
1:A:152:PHE:HA	1:A:208[B]:HIS:CE1	2.46	0.51
3:F:1222:V65:H191	3:F:1222:V65:H23	1.93	0.51
1:I:109:ASP:OD1	1:I:109:ASP:C	2.49	0.51
1:A:40:ARG:HD2	4:A:2015:HOH:O	2.11	0.50
1:O:125:ALA:O	1:O:129:VAL:HB	2.10	0.50
1:B:152:PHE:CE1	1:B:208[A]:HIS:CE1	3.00	0.50
3:A:1222:V65:H23	3:A:1222:V65:C15	2.35	0.50
1:L:63:GLU:O	1:L:66:ASN:HB2	2.12	0.50
1:L:108:ASN:O	1:L:220:VAL:HG12	2.12	0.50
3:A:1222:V65:C19	3:A:1222:V65:N5	2.59	0.50
1:O:193:TRP:CH2	1:O:199:VAL:HB	2.47	0.50
1:O:26:TRP:CZ3	1:O:62:ASN:ND2	2.80	0.49
1:I:181:LYS:HE2	1:I:204:ASP:OD2	2.11	0.49
1:O:192[A]:GLU:CD	1:O:192[A]:GLU:H	2.14	0.49
1:F:115:ILE:HG22	1:F:116:PRO:O	2.12	0.49
1:O:50:GLU:CD	1:O:50:GLU:H	2.15	0.48
1:A:1:ALA:N	1:F:96:GLU:OE2	2.42	0.48
1:O:182:TYR:HA	1:O:201[A]:MET:O	2.13	0.48
1:B:168:VAL:HG23	1:B:184[A]:LEU:HD23	1.94	0.48
1:A:7:TRP:CE2	1:A:130:GLY:HA2	2.48	0.48
1:A:141:GLU:HA	1:A:141:GLU:OE1	2.13	0.48
1:I:73:ALA:O	1:I:77:VAL:HG23	2.14	0.48
1:O:183:TRP:CE2	1:O:203:LYS:HG3	2.48	0.48
1:B:68:GLY:O	3:B:1222:V65:H152	2.14	0.48
1:I:49:SER:OG	1:I:52:ASN:HB2	2.14	0.48
1:F:173:GLU:O	1:F:180:ASN:HB2	2.14	0.48
1:B:152:PHE:HA	1:B:208[B]:HIS:CE1	2.49	0.48
1:A:115:ILE:HD13	1:A:125:ALA:CB	2.44	0.48
1:B:165:VAL:HG21	1:B:185:VAL:HG11	1.96	0.47
1:O:195:MET:SD	1:O:200[A]:LYS:HE2	2.54	0.47
1:F:5:VAL:O	1:F:169:GLY:HA3	2.14	0.47
1:I:180:ASN:OD1	1:I:180:ASN:N	2.48	0.47
1:F:28:PHE:CE2	1:F:50:GLU:HG2	2.49	0.47
1:A:46:ILE:CD1	1:I:104:TYR:CE2	2.97	0.47
1:B:52:ASN:C	1:B:52:ASN:HD22	2.16	0.47
1:L:167:VAL:HG22	1:L:185:VAL:HG22	1.96	0.47
1:B:146:TYR:CE2	1:B:199:VAL:HG23	2.49	0.47

*Continued on next page...*

*Continued from previous page...*

Atom-1	Atom-2	Interatomic distance (Å)	Clash overlap (Å)
1:I:92:GLU:O	1:I:93:ALA:HB3	2.14	0.47
1:B:153:GLU:H	1:B:208[B]:HIS:CE1	2.32	0.47
1:B:179:ASN:HB3	1:B:205:ARG:HD2	1.97	0.47
1:O:131:PRO:HA	1:O:167:VAL:O	2.15	0.47
1:L:52:ASN:OD1	1:L:83:LEU:HD12	2.15	0.46
1:O:122:LEU:O	1:O:126:VAL:HG23	2.15	0.46
1:A:46:ILE:HG12	1:I:87:GLU:HG2	1.97	0.46
1:I:70:MET:SD	1:I:70:MET:N	2.88	0.45
1:L:5:VAL:HG11	1:L:126:VAL:HG12	1.99	0.45
1:O:115:ILE:HG22	1:O:116:PRO:O	2.16	0.45
1:I:172:PHE:C	1:I:172:PHE:CD1	2.89	0.45
1:I:129:VAL:HG21	1:I:217:TYR:CZ	2.52	0.45
1:F:113:VAL:O	1:F:216:SER:HB2	2.17	0.45
1:O:76:TYR:O	1:O:80:ASN:N	2.50	0.44
1:L:138:ALA:HB1	1:L:143:PHE:CD2	2.52	0.44
1:A:46:ILE:HD12	1:I:104:TYR:CE2	2.53	0.44
1:O:65:CYS:H	1:O:95[B]:GLU:CD	2.21	0.44
1:F:153:GLU:HA	1:F:154:PRO:HD3	1.82	0.44
1:O:24:SER:O	1:O:26:TRP:N	2.51	0.44
1:O:8:ARG:CZ	1:O:184[A]:LEU:HD21	2.48	0.44
1:B:126:VAL:HG21	1:B:167:VAL:HG11	2.00	0.43
1:B:135:ALA:HB1	1:B:161:MET:HB3	2.00	0.43
1:O:44:ARG:HG2	1:O:44:ARG:HH11	1.83	0.43
1:O:83:LEU:O	1:O:105:SER:HA	2.18	0.43
1:O:27:ALA:O	1:O:31:THR:HG23	2.18	0.43
1:A:69:LEU:HD12	1:A:72:TYR:CZ	2.53	0.43
1:F:146:TYR:CE2	1:F:199:VAL:HG23	2.53	0.43
1:A:172:PHE:HA	1:A:181:LYS:HA	2.00	0.43
1:A:52:ASN:C	1:A:52:ASN:HD22	2.22	0.43
3:O:1222:V65:C23	3:O:1222:V65:H152	2.48	0.43
1:O:112:PHE:HA	1:O:218:PRO:HA	1.99	0.43
1:O:51:GLN:HB2	1:O:91:TYR:HA	2.00	0.43
1:I:16:VAL:HG21	1:I:197:GLY:HA3	2.00	0.43
1:O:100:TYR:CG	1:O:101:ASN:N	2.87	0.43
1:O:19:GLN:HE21	1:O:19:GLN:HB2	1.68	0.43
1:B:46:ILE:HD13	1:F:104:TYR:CE1	2.53	0.43
1:F:82:GLY:HA2	1:F:107:ALA:O	2.19	0.43
1:B:117:LYS:C	1:B:118:GLN:HG3	2.38	0.43
3:O:1222:V65:C22	3:O:1222:V65:C15	2.97	0.43
1:I:69:LEU:HD12	1:I:72:TYR:CE2	2.55	0.42
3:L:1222:V65:H342	3:L:1222:V65:H27	2.00	0.42

*Continued on next page...*

*Continued from previous page...*

Atom-1	Atom-2	Interatomic distance (Å)	Clash overlap (Å)
1:I:40:ARG:NH2	1:I:128:THR:O	2.53	0.42
1:L:182:TYR:HE1	1:L:184[B]:LEU:HG	1.84	0.42
1:F:101:ASN:HA	1:F:102:PRO:HD2	1.92	0.42
1:F:201[A]:MET:HB3	1:F:201[A]:MET:HE3	1.92	0.42
1:I:136:ILE:HG22	1:I:211:ILE:HA	2.01	0.42
1:O:17:LYS:HB3	1:O:28:PHE:CE2	2.54	0.42
1:B:8:ARG:CZ	1:B:184[A]:LEU:HD21	2.49	0.42
1:A:210:GLY:O	1:A:213:SER:HB2	2.20	0.42
1:A:65:CYS:HB2	1:A:95[B]:GLU:OE2	2.20	0.41
1:A:46:ILE:CD1	1:I:104:TYR:HE2	2.33	0.41
1:I:9:GLU:H	1:I:9:GLU:HG3	1.62	0.41
1:L:38:MET:HG3	1:L:107:ALA:HB2	2.01	0.41
1:A:92:GLU:O	1:A:93:ALA:HB3	2.20	0.41
1:A:13:VAL:CG1	1:A:186:LYS:HE3	2.50	0.41
1:O:69:LEU:HD21	3:O:1222:V65:H162	1.90	0.41
3:B:1222:V65:H192	3:B:1222:V65:H122	1.82	0.41
1:A:82:GLY:HA2	1:A:107:ALA:O	2.21	0.41
1:F:153:GLU:OE2	1:F:154:PRO:HD2	2.20	0.41
1:F:183:TRP:O	1:F:200[B]:LYS:HA	2.21	0.41
1:A:146:TYR:CE2	1:A:199:VAL:HA	2.56	0.41
1:F:28:PHE:CZ	1:F:50:GLU:HG2	2.56	0.41
1:F:125:ALA:O	1:F:129:VAL:HB	2.20	0.41
1:O:190:GLY:HA3	1:O:192[A]:GLU:OE2	2.21	0.40
1:F:192[A]:GLU:CD	1:F:192[A]:GLU:H	2.23	0.40
1:I:80:ASN:ND2	1:I:100:TYR:CZ	2.89	0.40
1:B:183:TRP:CE2	1:B:203:LYS:HG3	2.56	0.40
1:A:120:LYS:HD3	1:A:120:LYS:HA	1.71	0.40
1:I:69:LEU:HD12	1:I:72:TYR:CZ	2.55	0.40
1:O:85:SER:HB3	1:O:106:VAL:HG11	2.02	0.40
1:F:199:VAL:HG22	1:F:201[A]:MET:HG2	2.03	0.40

There are no symmetry-related clashes.

## 5.3 Torsion angles ⓘ

### 5.3.1 Protein backbone ⓘ

In the following table, the Percentiles column shows the percent Ramachandran outliers of the chain as a percentile score with respect to all X-ray entries followed by that with respect to entries of similar resolution.

The Analysed column shows the number of residues for which the backbone conformation was analysed, and the total number of residues.

Mol	Chain	Analysed	Favoured	Allowed	Outliers	Percentiles	
1	A	221/220 (100%)	203 (92%)	17 (8%)	1 (0%)	34	69
1	B	222/220 (101%)	207 (93%)	15 (7%)	0	100	100
1	F	219/220 (100%)	209 (95%)	10 (5%)	0	100	100
1	I	220/220 (100%)	196 (89%)	21 (10%)	3 (1%)	14	42
1	L	219/220 (100%)	198 (90%)	20 (9%)	1 (0%)	34	69
1	O	219/220 (100%)	197 (90%)	19 (9%)	3 (1%)	14	42
All	All	1320/1320 (100%)	1210 (92%)	102 (8%)	8 (1%)	30	65

All (8) Ramachandran outliers are listed below:

Mol	Chain	Res	Type
1	O	156	CYS
1	A	209	CYS
1	L	119	GLU
1	O	25	CYS
1	O	202	ALA
1	I	93	ALA
1	I	86	GLU
1	I	174	SER

### 5.3.2 Protein sidechains ⓘ

In the following table, the Percentiles column shows the percent sidechain outliers of the chain as a percentile score with respect to all X-ray entries followed by that with respect to entries of similar resolution.

The Analysed column shows the number of residues for which the sidechain conformation was analysed, and the total number of residues.

Mol	Chain	Analysed	Rotameric	Outliers	Percentiles	
1	A	184/179 (103%)	170 (92%)	14 (8%)	16	42
1	B	184/179 (103%)	172 (94%)	12 (6%)	21	52
1	F	182/179 (102%)	170 (93%)	12 (7%)	21	51
1	I	183/179 (102%)	173 (94%)	10 (6%)	27	59
1	L	182/179 (102%)	170 (93%)	12 (7%)	21	51
1	O	182/179 (102%)	168 (92%)	14 (8%)	16	41

*Continued on next page...*



*Continued from previous page...*

Mol	Chain	Analysed	Rotameric	Outliers	Percentiles	
All	All	1097/1074 (102%)	1023 (93%)	74 (7%)	22	50

All (74) residues with a non-rotameric sidechain are listed below:

Mol	Chain	Res	Type
1	A	3	ARG
1	A	22	CYS
1	A	52	ASN
1	A	89	TYR
1	A	108	ASN
1	A	120	LYS
1	A	144	LEU
1	A	156	CYS
1	A	158	SER
1	A	159	GLU
1	A	178	ASP
1	A	179	ASN
1	A	206	ARG
1	A	213	SER
1	B	22	CYS
1	B	52	ASN
1	B	89	TYR
1	B	108	ASN
1	B	118	GLN
1	B	124	LYS
1	B	147	LYS
1	B	155	ASP
1	B	156	CYS
1	B	159	GLU
1	B	173	GLU
1	B	178	ASP
1	F	21	GLN
1	F	52	ASN
1	F	89	TYR
1	F	109	ASP
1	F	156	CYS
1	F	157	SER
1	F	160	ASP
1	F	180	ASN
1	F	192[A]	GLU
1	F	192[B]	GLU
1	F	201[A]	MET

*Continued on next page...*

*Continued from previous page...*

Mol	Chain	Res	Type
1	F	201[B]	MET
1	I	52	ASN
1	I	89	TYR
1	I	155	ASP
1	I	156	CYS
1	I	161	MET
1	I	180	ASN
1	I	184[A]	LEU
1	I	184[B]	LEU
1	I	192[A]	GLU
1	I	192[B]	GLU
1	L	3	ARG
1	L	52	ASN
1	L	89	TYR
1	L	106	VAL
1	L	109	ASP
1	L	147	LYS
1	L	155	ASP
1	L	161	MET
1	L	180	ASN
1	L	192[A]	GLU
1	L	192[B]	GLU
1	L	220	VAL
1	O	4	SER
1	O	10	LYS
1	O	19	GLN
1	O	22	CYS
1	O	41	LYS
1	O	52	ASN
1	O	89	TYR
1	O	99	LYS
1	O	109	ASP
1	O	147	LYS
1	O	165	VAL
1	O	192[A]	GLU
1	O	192[B]	GLU
1	O	220	VAL

Some sidechains can be flipped to improve hydrogen bonding and reduce clashes. All (12) such sidechains are listed below:

Mol	Chain	Res	Type
1	A	75	GLN

*Continued on next page...*

*Continued from previous page...*

Mol	Chain	Res	Type
1	A	78	GLN
1	B	66	ASN
1	B	108	ASN
1	I	66	ASN
1	I	118	GLN
1	L	37	GLN
1	L	80	ASN
1	O	19	GLN
1	O	52	ASN
1	O	80	ASN
1	O	179	ASN

### 5.3.3 RNA [i](#)

There are no RNA molecules in this entry.

## 5.4 Non-standard residues in protein, DNA, RNA chains [i](#)

There are no non-standard protein/DNA/RNA residues in this entry.

## 5.5 Carbohydrates [i](#)

There are no carbohydrates in this entry.

## 5.6 Ligand geometry [i](#)

12 ligands are modelled in this entry.

In the following table, the Counts columns list the number of bonds (or angles) for which Mogul statistics could be retrieved, the number of bonds (or angles) that are observed in the model and the number of bonds (or angles) that are defined in the chemical component dictionary. The Link column lists molecule types, if any, to which the group is linked. The Z score for a bond length (or angle) is the number of standard deviations the observed value is removed from the expected value. A bond length (or angle) with  $|Z| > 2$  is considered an outlier worth inspection. RMSZ is the root-mean-square of all Z scores of the bond lengths (or angles).

Mol	Type	Chain	Res	Link	Bond lengths			Bond angles		
					Counts	RMSZ	$\# Z  > 2$	Counts	RMSZ	$\# Z  > 2$
2	GOL	A	1221	-	5,5,5	0.25	0	5,5,5	0.35	0
3	V65	A	1222	1	30,32,33	0.76	1 (3%)	40,43,45	2.57	11 (27%)
2	GOL	B	1221	-	5,5,5	0.39	0	5,5,5	0.49	0

Mol	Type	Chain	Res	Link	Bond lengths			Bond angles		
					Counts	RMSZ	# Z  > 2	Counts	RMSZ	# Z  > 2
3	V65	B	1222	1	30,32,33	0.83	0	40,43,45	2.19	16 (40%)
2	GOL	F	1221	-	5,5,5	0.44	0	5,5,5	0.60	0
3	V65	F	1222	1	30,32,33	0.85	0	40,43,45	2.02	6 (15%)
2	GOL	I	1221	-	5,5,5	0.26	0	5,5,5	0.45	0
3	V65	I	1222	1	30,32,33	0.80	1 (3%)	40,43,45	1.97	9 (22%)
2	GOL	L	1221	-	5,5,5	0.45	0	5,5,5	0.37	0
3	V65	L	1222	1	30,32,33	0.80	0	40,43,45	2.25	12 (30%)
2	GOL	O	1221	-	5,5,5	0.38	0	5,5,5	0.23	0
3	V65	O	1222	1	30,32,33	0.84	1 (3%)	40,43,45	1.97	11 (27%)

In the following table, the Chirals column lists the number of chiral outliers, the number of chiral centers analysed, the number of these observed in the model and the number defined in the chemical component dictionary. Similar counts are reported in the Torsion and Rings columns. '-' means no outliers of that kind were identified.

Mol	Type	Chain	Res	Link	Chirals	Torsions	Rings
2	GOL	A	1221	-	-	0/4/4/4	0/0/0/0
3	V65	A	1222	1	-	0/16/34/36	0/4/4/4
2	GOL	B	1221	-	-	0/4/4/4	0/0/0/0
3	V65	B	1222	1	-	0/16/34/36	0/4/4/4
2	GOL	F	1221	-	-	0/4/4/4	0/0/0/0
3	V65	F	1222	1	-	0/16/34/36	0/4/4/4
2	GOL	I	1221	-	-	0/4/4/4	0/0/0/0
3	V65	I	1222	1	-	0/16/34/36	0/4/4/4
2	GOL	L	1221	-	-	0/4/4/4	0/0/0/0
3	V65	L	1222	1	-	0/16/34/36	0/4/4/4
2	GOL	O	1221	-	-	0/4/4/4	0/0/0/0
3	V65	O	1222	1	-	0/16/34/36	0/4/4/4

All (3) bond length outliers are listed below:

Mol	Chain	Res	Type	Atoms	Z	Observed(Å)	Ideal(Å)
3	I	1222	V65	C8-N29	2.21	1.39	1.35
3	O	1222	V65	C8-N29	2.34	1.40	1.35
3	A	1222	V65	C8-N29	2.49	1.40	1.35

All (65) bond angle outliers are listed below:

Mol	Chain	Res	Type	Atoms	Z	Observed(°)	Ideal(°)
3	A	1222	V65	C22-C12-N10	-7.46	103.58	114.59
3	F	1222	V65	C22-C12-N10	-6.80	104.55	114.59

*Continued on next page...*

*Continued from previous page...*

Mol	Chain	Res	Type	Atoms	Z	Observed(°)	Ideal(°)
3	B	1222	V65	C22-C12-N10	-5.07	107.10	114.59
3	L	1222	V65	N7-C8-N29	-4.14	112.44	117.08
3	A	1222	V65	N9-C4-N5	-4.07	120.32	126.18
3	I	1222	V65	C22-C12-N10	-4.04	108.62	114.59
3	L	1222	V65	C22-C12-N10	-3.83	108.94	114.59
3	L	1222	V65	N9-C4-N5	-3.74	120.78	126.18
3	F	1222	V65	N9-C4-N5	-3.25	121.49	126.18
3	B	1222	V65	C18-C19-C14	-3.22	104.96	110.86
3	L	1222	V65	C34-N29-C8	-2.97	117.15	121.81
3	A	1222	V65	C18-C19-C14	-2.91	105.51	110.86
3	B	1222	V65	C34-N29-C8	-2.81	117.39	121.81
3	I	1222	V65	N9-C4-N5	-2.78	122.18	126.18
3	B	1222	V65	C12-C22-C23	-2.63	115.82	120.78
3	O	1222	V65	N9-C4-N5	-2.62	122.40	126.18
3	L	1222	V65	C16-C15-C14	-2.61	106.08	110.86
3	A	1222	V65	C19-C14-C15	-2.57	105.16	111.22
3	O	1222	V65	C30-N29-C8	-2.54	117.82	121.81
3	B	1222	V65	O32-C33-C34	-2.53	106.04	111.84
3	A	1222	V65	N7-C6-N5	-2.51	122.13	126.35
3	O	1222	V65	N7-C6-N5	-2.44	122.25	126.35
3	I	1222	V65	C16-C15-C14	-2.31	106.62	110.86
3	B	1222	V65	C26-C27-C22	-2.31	117.88	121.04
3	B	1222	V65	N9-C4-N5	-2.31	122.86	126.18
3	B	1222	V65	C30-N29-C8	-2.22	118.33	121.81
3	O	1222	V65	N9-C8-N7	-2.13	122.76	126.35
3	L	1222	V65	C12-N10-C6	-2.02	116.94	119.67
3	B	1222	V65	N9-C8-N29	2.01	119.33	117.08
3	O	1222	V65	C8-N7-C6	2.24	117.09	113.48
3	I	1222	V65	C31-C30-N29	2.31	114.08	110.02
3	O	1222	V65	N7-C6-N10	2.41	121.37	117.81
3	I	1222	V65	N9-C8-N29	2.43	119.80	117.08
3	L	1222	V65	C15-C14-N10	2.44	115.22	111.91
3	A	1222	V65	N7-C8-N29	2.45	119.83	117.08
3	B	1222	V65	C31-C30-N29	2.49	114.40	110.02
3	A	1222	V65	C12-N10-C6	2.57	123.14	119.67
3	B	1222	V65	C27-C22-C23	2.71	122.46	118.13
3	B	1222	V65	C15-C14-N10	2.74	115.62	111.91
3	O	1222	V65	C33-C34-N29	2.77	114.89	110.02
3	L	1222	V65	C12-N10-C14	2.82	122.19	118.70
3	B	1222	V65	C12-N10-C14	2.92	122.31	118.70
3	B	1222	V65	C6-N5-C4	2.93	116.07	114.03
3	I	1222	V65	C15-C14-N10	3.14	116.17	111.91

*Continued on next page...*

*Continued from previous page...*

Mol	Chain	Res	Type	Atoms	Z	Observed(°)	Ideal(°)
3	F	1222	V65	C34-N29-C30	3.24	118.40	111.59
3	A	1222	V65	N7-C6-N10	3.31	122.71	117.81
3	L	1222	V65	C34-N29-C30	3.42	118.76	111.59
3	O	1222	V65	N7-C8-N29	3.50	121.00	117.08
3	F	1222	V65	C12-N10-C14	3.57	123.12	118.70
3	A	1222	V65	C34-N29-C30	3.59	119.14	111.59
3	B	1222	V65	C8-N9-C4	3.88	116.73	114.03
3	F	1222	V65	C8-N9-C4	4.30	117.02	114.03
3	I	1222	V65	C8-N9-C4	4.67	117.28	114.03
3	I	1222	V65	C34-N29-C30	4.74	121.55	111.59
3	L	1222	V65	C8-N9-C4	4.85	117.41	114.03
3	O	1222	V65	C34-N29-C30	4.86	121.79	111.59
3	O	1222	V65	C8-N9-C4	5.01	117.52	114.03
3	I	1222	V65	C6-N5-C4	5.25	117.68	114.03
3	L	1222	V65	C6-N5-C4	5.31	117.73	114.03
3	F	1222	V65	C6-N5-C4	5.61	117.93	114.03
3	O	1222	V65	C6-N5-C4	5.70	118.00	114.03
3	A	1222	V65	C8-N9-C4	5.72	118.01	114.03
3	B	1222	V65	C34-N29-C30	6.05	124.29	111.59
3	L	1222	V65	N9-C8-N29	6.45	124.30	117.08
3	A	1222	V65	C6-N5-C4	8.26	119.78	114.03

There are no chirality outliers.

There are no torsion outliers.

There are no ring outliers.

6 monomers are involved in 31 short contacts:

Mol	Chain	Res	Type	Clashes	Symm-Clashes
3	A	1222	V65	6	0
3	B	1222	V65	5	0
3	F	1222	V65	3	0
3	I	1222	V65	3	0
3	L	1222	V65	2	0
3	O	1222	V65	12	0

## 5.7 Other polymers

There are no such residues in this entry.

## 5.8 Polymer linkage issues

There are no chain breaks in this entry.

## 6 Fit of model and data ⓘ

### 6.1 Protein, DNA and RNA chains ⓘ

In the following table, the column labelled ‘#RSRZ> 2’ contains the number (and percentage) of RSRZ outliers, followed by percent RSRZ outliers for the chain as percentile scores relative to all X-ray entries and entries of similar resolution. The OWAB column contains the minimum, median, 95<sup>th</sup> percentile and maximum values of the occupancy-weighted average B-factor per residue. The column labelled ‘Q< 0.9’ lists the number of (and percentage) of residues with an average occupancy less than 0.9.

Mol	Chain	Analysed	<RSRZ>	#RSRZ>2	OWAB(Å <sup>2</sup> )	Q<0.9
1	A	218/220 (99%)	-0.29	2 (0%) 85 79	30, 44, 71, 127	6 (2%)
1	B	219/220 (99%)	-0.38	0 100 100	27, 46, 73, 111	4 (1%)
1	F	216/220 (98%)	-0.33	1 (0%) 91 88	30, 45, 68, 99	5 (2%)
1	I	217/220 (98%)	-0.38	0 100 100	27, 48, 80, 113	5 (2%)
1	L	216/220 (98%)	-0.17	1 (0%) 91 88	41, 68, 95, 109	5 (2%)
1	O	216/220 (98%)	0.03	3 (1%) 78 69	44, 77, 104, 119	5 (2%)
All	All	1302/1320 (98%)	-0.25	7 (0%) 91 88	27, 53, 89, 127	30 (2%)

All (7) RSRZ outliers are listed below:

Mol	Chain	Res	Type	RSRZ
1	A	177	SER	3.5
1	L	220	VAL	3.3
1	F	179	ASN	3.3
1	O	168	VAL	3.2
1	O	220	VAL	2.9
1	A	178	ASP	2.6
1	O	129	VAL	2.2

### 6.2 Non-standard residues in protein, DNA, RNA chains ⓘ

There are no non-standard protein/DNA/RNA residues in this entry.

### 6.3 Carbohydrates ⓘ

There are no carbohydrates in this entry.



## 6.4 Ligands [i](#)

In the following table, the Atoms column lists the number of modelled atoms in the group and the number defined in the chemical component dictionary. LLDF column lists the quality of electron density of the group with respect to its neighbouring residues in protein, DNA or RNA chains. The B-factors column lists the minimum, median, 95<sup>th</sup> percentile and maximum values of B factors of atoms in the group. The column labelled 'Q< 0.9' lists the number of atoms with occupancy less than 0.9.

Mol	Type	Chain	Res	Atoms	RSCC	RSR	LLDF	B-factors(Å <sup>2</sup> )	Q<0.9
3	V65	F	1222	29/30	0.94	0.25	3.81	73,83,119,130	0
3	V65	O	1222	29/30	0.79	0.30	3.55	104,124,137,142	0
3	V65	I	1222	29/30	0.93	0.26	2.59	67,96,117,126	0
3	V65	L	1222	29/30	0.91	0.23	2.53	63,89,102,105	0
2	GOL	F	1221	6/6	0.81	0.21	2.49	74,84,91,92	0
3	V65	A	1222	29/30	0.92	0.21	1.71	62,75,101,107	0
3	V65	B	1222	29/30	0.95	0.18	1.03	41,54,66,73	0
2	GOL	A	1221	6/6	0.90	0.19	-	76,81,84,89	0
2	GOL	I	1221	6/6	0.86	0.16	-	70,78,83,85	0
2	GOL	L	1221	6/6	0.83	0.18	-	72,82,86,91	0
2	GOL	O	1221	6/6	0.35	0.49	-	109,120,123,126	0
2	GOL	B	1221	6/6	0.86	0.20	-	76,77,82,82	0

## 6.5 Other polymers [i](#)

There are no such residues in this entry.