



Full wwPDB X-ray Structure Validation Report ⓘ

Feb 1, 2016 – 07:30 AM GMT

PDB ID : 3B1N
Title : Structure of Burkholderia thailandensis nucleoside kinase (BthNK) in complex with ADP-mizoribine
Authors : Yasutake, Y.; Ota, H.; Hino, E.; Sakasegawa, S.; Tamura, T.
Deposited on : 2011-07-05
Resolution : 1.55 Å(reported)

This is a Full wwPDB X-ray Structure Validation Report for a publicly released PDB entry.
We welcome your comments at validation@mail.wwpdb.org
A user guide is available at
<http://wwpdb.org/validation/2016/XrayValidationReportHelp>
with specific help available everywhere you see the ⓘ symbol.

The following versions of software and data (see [references ⓘ](#)) were used in the production of this report:

MolProbity : 4.02b-467
Mogul : 1.7 (RC4), CSD as536be (2015)
Xtriage (Phenix) : 1.9-1692
EDS : rb-20026688
Percentile statistics : 20151230.v01 (using entries in the PDB archive December 30th 2015)
Refmac : 5.8.0135
CCP4 : 6.5.0
Ideal geometry (proteins) : Engh & Huber (2001)
Ideal geometry (DNA, RNA) : Parkinson et al. (1996)
Validation Pipeline (wwPDB-VP) : trunk26865

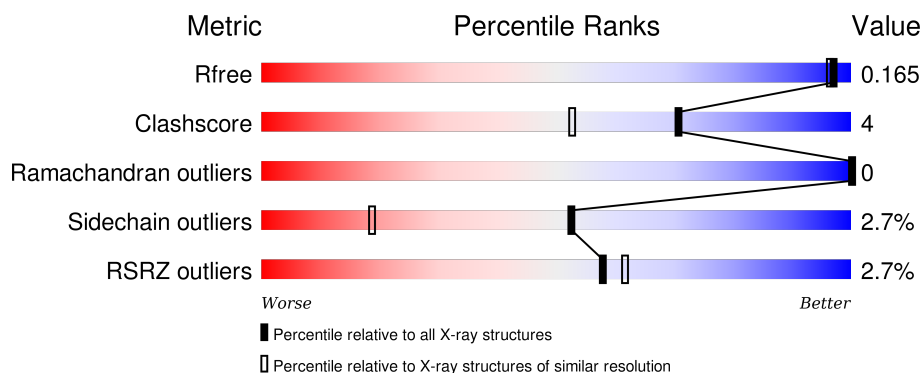
1 Overall quality at a glance

The following experimental techniques were used to determine the structure:

X-RAY DIFFRACTION


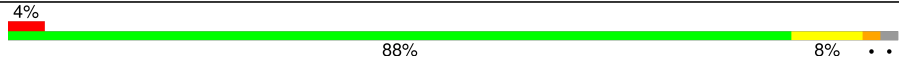
The reported resolution of this entry is 1.55 Å.

Percentile scores (ranging between 0-100) for global validation metrics of the entry are shown in the following graphic. The table shows the number of entries on which the scores are based.



Metric	Whole archive (#Entries)	Similar resolution (#Entries, resolution range(Å))
R_{free}	91344	1665 (1.58-1.54)
Clashscore	102246	1014 (1.56-1.56)
Ramachandran outliers	100387	1704 (1.58-1.54)
Sidechain outliers	100360	1702 (1.58-1.54)
RSRZ outliers	91569	1668 (1.58-1.54)

The table below summarises the geometric issues observed across the polymeric chains and their fit to the electron density. The red, orange, yellow and green segments on the lower bar indicate the fraction of residues that contain outliers for ≥ 3 , 2, 1 and 0 types of geometric quality criteria. A grey segment represents the fraction of residues that are not modelled. The numeric value for each fraction is indicated below the corresponding segment, with a dot representing fractions $\leq 5\%$. The upper red bar (where present) indicates the fraction of residues that have poor fit to the electron density. The numeric value is given above the bar.

Mol	Chain	Length	Quality of chain
1	A	326	
1	B	326	

The following table lists non-polymeric compounds, carbohydrate monomers and non-standard residues in protein, DNA, RNA chains that are outliers for geometric or electron-density-fit criteria:

Mol	Type	Chain	Res	Chirality	Geometry	Clashes	Electron density
5	GOL	B	327	-	-	-	X

2 Entry composition

There are 6 unique types of molecules in this entry. The entry contains 5742 atoms, of which 0 are hydrogens and 0 are deuteriums.

In the tables below, the ZeroOcc column contains the number of atoms modelled with zero occupancy, the AltConf column contains the number of residues with at least one atom in alternate conformation and the Trace column contains the number of residues modelled with at most 2 atoms.

- Molecule 1 is a protein called Ribokinase, putative.

Mol	Chain	Residues	Atoms					ZeroOcc	AltConf	Trace
1	A	311	Total	C	N	O	S	0	7	0
			2415	1524	425	450	16			
1	B	320	Total	C	N	O	S	0	13	0
			2524	1590	447	470	17			

There are 28 discrepancies between the modelled and reference sequences:

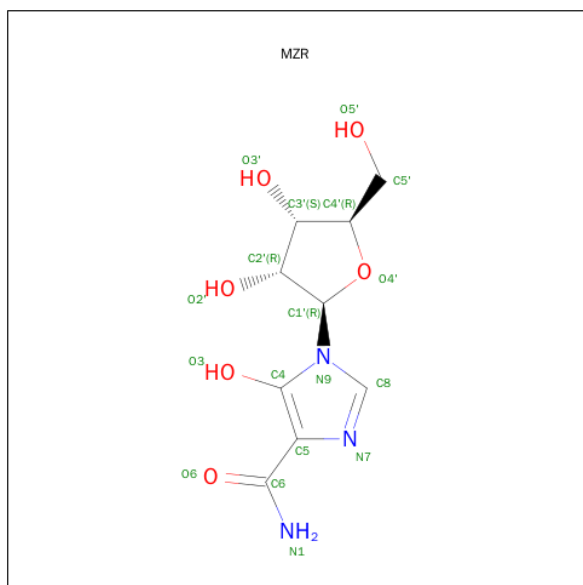
Chain	Residue	Modelled	Actual	Comment	Reference
A	313	GLY	-	EXPRESSION TAG	UNP Q2SZE4
A	314	SER	-	EXPRESSION TAG	UNP Q2SZE4
A	315	LYS	-	EXPRESSION TAG	UNP Q2SZE4
A	316	LEU	-	EXPRESSION TAG	UNP Q2SZE4
A	317	ARG	-	EXPRESSION TAG	UNP Q2SZE4
A	318	SER	-	EXPRESSION TAG	UNP Q2SZE4
A	319	LEU	-	EXPRESSION TAG	UNP Q2SZE4
A	320	GLU	-	EXPRESSION TAG	UNP Q2SZE4
A	321	HIS	-	EXPRESSION TAG	UNP Q2SZE4
A	322	HIS	-	EXPRESSION TAG	UNP Q2SZE4
A	323	HIS	-	EXPRESSION TAG	UNP Q2SZE4
A	324	HIS	-	EXPRESSION TAG	UNP Q2SZE4
A	325	HIS	-	EXPRESSION TAG	UNP Q2SZE4
A	326	HIS	-	EXPRESSION TAG	UNP Q2SZE4
B	313	GLY	-	EXPRESSION TAG	UNP Q2SZE4
B	314	SER	-	EXPRESSION TAG	UNP Q2SZE4
B	315	LYS	-	EXPRESSION TAG	UNP Q2SZE4
B	316	LEU	-	EXPRESSION TAG	UNP Q2SZE4
B	317	ARG	-	EXPRESSION TAG	UNP Q2SZE4
B	318	SER	-	EXPRESSION TAG	UNP Q2SZE4
B	319	LEU	-	EXPRESSION TAG	UNP Q2SZE4
B	320	GLU	-	EXPRESSION TAG	UNP Q2SZE4
B	321	HIS	-	EXPRESSION TAG	UNP Q2SZE4
B	322	HIS	-	EXPRESSION TAG	UNP Q2SZE4
B	323	HIS	-	EXPRESSION TAG	UNP Q2SZE4

Continued on next page...

Continued from previous page...

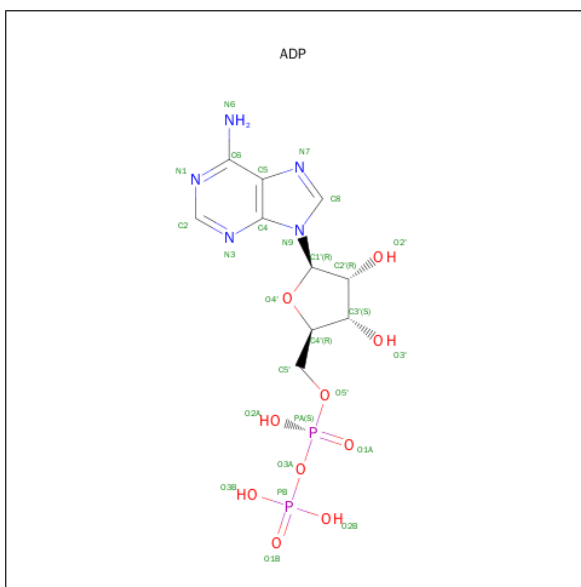
Chain	Residue	Modelled	Actual	Comment	Reference
B	324	HIS	-	EXPRESSION TAG	UNP Q2SZE4
B	325	HIS	-	EXPRESSION TAG	UNP Q2SZE4
B	326	HIS	-	EXPRESSION TAG	UNP Q2SZE4

- Molecule 2 is 5-HYDROXY-1-(BETA-D-RIBOFURANOSYL)-1H-IMIDAZOLE-4-CARBOXAMIDE (three-letter code: MZR) (formula: $C_9H_{13}N_3O_6$).



Mol	Chain	Residues	Atoms				ZeroOcc	AltConf
2	A	1	Total	C	N	O	0	0
			18	9	3	6		
2	B	1	Total	C	N	O	0	0
			18	9	3	6		

- Molecule 3 is ADENOSINE-5'-DIPHOSPHATE (three-letter code: ADP) (formula: $C_{10}H_{15}N_5O_{10}P_2$).



Mol	Chain	Residues	Atoms					ZeroOcc	AltConf
3	A	1	Total	C	N	O	P	0	0
			27	10	5	10	2		
3	B	1	Total	C	N	O	P	0	0
			27	10	5	10	2		

- Molecule 4 is SODIUM ION (three-letter code: NA) (formula: Na).

Mol	Chain	Residues	Atoms		ZeroOcc	AltConf
4	B	1	Total	Na	0	0
			1	1		
4	A	1	Total	Na	0	0
			1	1		

- Molecule 5 is GLYCEROL (three-letter code: GOL) (formula: C₃H₈O₃).



Mol	Chain	Residues	Atoms			ZeroOcc	AltConf
5	B	1	Total	C	O	0	0
			6	3	3		

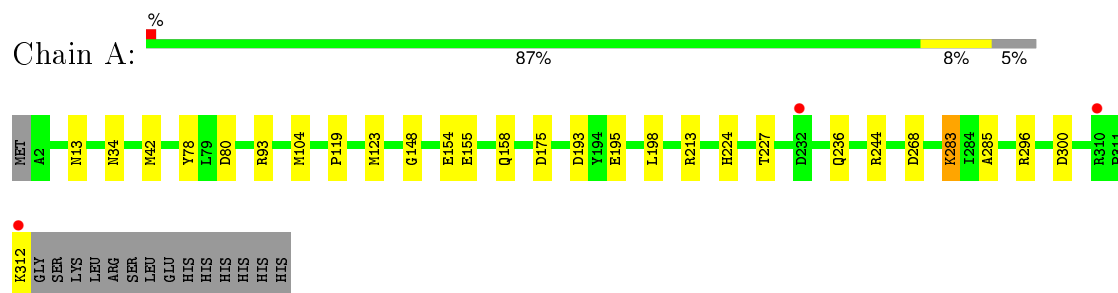
- Molecule 6 is water.

Mol	Chain	Residues	Atoms		ZeroOcc	AltConf
6	A	372	Total	O	0	0
			372	372		
6	B	333	Total	O	0	0
			333	333		

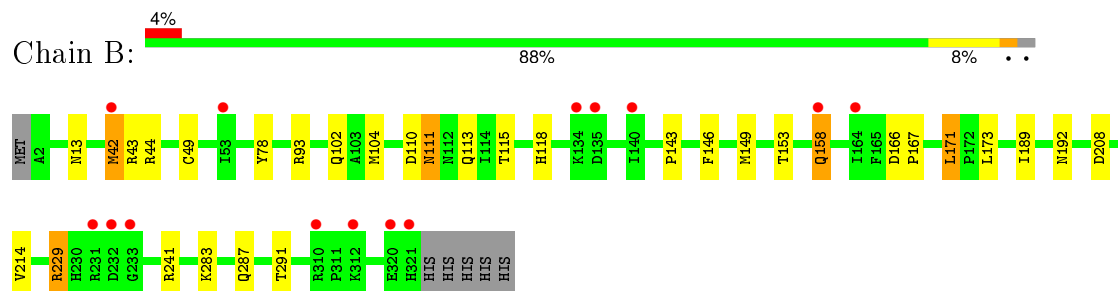
3 Residue-property plots

These plots are drawn for all protein, RNA and DNA chains in the entry. The first graphic for a chain summarises the proportions of errors displayed in the second graphic. The second graphic shows the sequence view annotated by issues in geometry and electron density. Residues are color-coded according to the number of geometric quality criteria for which they contain at least one outlier: green = 0, yellow = 1, orange = 2 and red = 3 or more. A red dot above a residue indicates a poor fit to the electron density ($RSRZ > 2$). Stretches of 2 or more consecutive residues without any outlier are shown as a green connector. Residues present in the sample, but not in the model, are shown in grey.

- Molecule 1: Ribokinase, putative



- Molecule 1: Ribokinase, putative



4 Data and refinement statistics

Property	Value	Source
Space group	C 2 2 21	Depositor
Cell constants a, b, c, α , β , γ	44.58Å 164.65Å 182.54Å 90.00° 90.00° 90.00°	Depositor
Resolution (Å)	31.31 – 1.55 31.31 – 1.55	Depositor EDS
% Data completeness (in resolution range)	99.9 (31.31-1.55) 99.9 (31.31-1.55)	Depositor EDS
R_{merge}	0.07	Depositor
R_{sym}	(Not available)	Depositor
$\langle I/\sigma(I) \rangle$ ¹	5.66 (at 1.55Å)	Xtriage
Refinement program	REFMAC 5.5.0109	Depositor
R, R_{free}	0.167 , 0.198 0.169 , 0.165	Depositor DCC
R_{free} test set	4842 reflections (5.22%)	DCC
Wilson B-factor (Å ²)	13.8	Xtriage
Anisotropy	0.030	Xtriage
Bulk solvent k_{sol} (e/Å ³), B_{sol} (Å ²)	0.39 , 50.2	EDS
Estimated twinning fraction	No twinning to report.	Xtriage
L-test for twinning ²	$\langle L \rangle = 0.49$, $\langle L^2 \rangle = 0.33$	Xtriage
Outliers	0 of 97591 reflections	Xtriage
F_o, F_c correlation	0.96	EDS
Total number of atoms	5742	wwPDB-VP
Average B, all atoms (Å ²)	17.0	wwPDB-VP

Xtriage's analysis on translational NCS is as follows: *The largest off-origin peak in the Patterson function is 3.87% of the height of the origin peak. No significant pseudotranslation is detected.*

¹Intensities estimated from amplitudes.

²Theoretical values of $\langle |L| \rangle$, $\langle L^2 \rangle$ for acentric reflections are 0.5, 0.375 respectively for untwinned datasets, and 0.333, 0.2 for perfectly twinned datasets.

5 Model quality

5.1 Standard geometry

Bond lengths and bond angles in the following residue types are not validated in this section: GOL, MZR, ADP, NA

The Z score for a bond length (or angle) is the number of standard deviations the observed value is removed from the expected value. A bond length (or angle) with $|Z| > 5$ is considered an outlier worth inspection. RMSZ is the root-mean-square of all Z scores of the bond lengths (or angles).

Mol	Chain	Bond lengths		Bond angles	
		RMSZ	$\# Z > 5$	RMSZ	$\# Z > 5$
1	A	0.88	0/2487	0.95	8/3372 (0.2%)
1	B	0.80	0/2611	0.92	3/3535 (0.1%)
All	All	0.84	0/5098	0.93	11/6907 (0.2%)

There are no bond length outliers.

All (11) bond angle outliers are listed below:

Mol	Chain	Res	Type	Atoms	Z	Observed(°)	Ideal(°)
1	A	193	ASP	CB-CG-OD2	-7.42	111.62	118.30
1	A	175	ASP	CB-CG-OD2	6.97	124.57	118.30
1	A	80	ASP	CB-CG-OD2	-6.47	112.48	118.30
1	B	166[A]	ASP	N-CA-CB	-5.99	99.81	110.60
1	B	166[B]	ASP	N-CA-CB	-5.99	99.81	110.60
1	A	198	LEU	CB-CG-CD1	5.79	120.85	111.00
1	A	193	ASP	CB-CG-OD1	5.41	123.17	118.30
1	A	213	ARG	NE-CZ-NH2	5.41	123.00	120.30
1	A	268	ASP	CB-CG-OD1	5.24	123.01	118.30
1	B	93	ARG	NE-CZ-NH2	-5.21	117.69	120.30
1	A	104	MET	CG-SD-CE	-5.07	92.08	100.20

There are no chirality outliers.

There are no planarity outliers.

5.2 Too-close contacts

In the following table, the Non-H and H(model) columns list the number of non-hydrogen atoms and hydrogen atoms in the chain respectively. The H(added) column lists the number of hydrogen atoms added and optimized by MolProbity. The Clashes column lists the number of clashes within the asymmetric unit, whereas Symm-Clashes lists symmetry related clashes.

Mol	Chain	Non-H	H(model)	H(added)	Clashes	Symm-Clashes
1	A	2415	0	2384	20	0
1	B	2524	0	2507	26	0
2	A	18	0	13	0	0
2	B	18	0	13	0	0
3	A	27	0	12	0	0
3	B	27	0	12	0	0
4	A	1	0	0	0	0
4	B	1	0	0	0	0
5	B	6	0	8	0	0
6	A	372	0	0	4	0
6	B	333	0	0	8	0
All	All	5742	0	4949	44	0

The all-atom clashscore is defined as the number of clashes found per 1000 atoms (including hydrogen atoms). The all-atom clashscore for this structure is 4.

All (44) close contacts within the same asymmetric unit are listed below, sorted by their clash magnitude.

Atom-1	Atom-2	Interatomic distance (Å)	Clash overlap (Å)
1:A:34:ASN:HD21	1:B:192:ASN:HD21	1.16	0.91
1:A:244:ARG:HB2	1:A:244:ARG:HH21	1.37	0.89
1:A:227[B]:THR:HG22	1:A:236:GLN:NE2	1.88	0.87
1:A:227[B]:THR:HG22	1:A:236:GLN:HE22	1.43	0.84
1:A:244:ARG:NH2	1:A:244:ARG:HB2	1.94	0.81
1:A:224[B]:HIS:HD2	6:A:501:HOH:O	1.68	0.75
1:B:118:HIS:CE1	6:B:608:HOH:O	2.39	0.74
1:B:158:GLN:HB2	6:B:646:HOH:O	1.89	0.73
1:A:34:ASN:ND2	1:B:192:ASN:HD21	1.86	0.72
1:A:227[B]:THR:CG2	1:A:236:GLN:HE22	2.05	0.70
1:B:189[B]:ILE:HG12	1:B:214:VAL:HG11	1.76	0.68
1:B:113[A]:GLN:CD	6:B:481:HOH:O	2.34	0.66
1:B:118:HIS:HE1	6:B:608:HOH:O	1.75	0.66
1:B:113[A]:GLN:HG2	6:B:481:HOH:O	1.99	0.62
1:A:296:ARG:NH1	1:A:300:ASP:OD1	2.33	0.61
1:A:244:ARG:NH2	1:A:285:ALA:O	2.29	0.61
1:B:44[B]:ARG:NH1	6:B:541:HOH:O	2.34	0.59
1:A:148:GLY:HA3	6:A:450:HOH:O	2.03	0.59
1:B:13:ASN:OD1	1:B:102:GLN:NE2	2.37	0.57
1:B:113[A]:GLN:CG	6:B:481:HOH:O	2.52	0.57
1:A:13:ASN:HB3	1:A:42[A]:MET:SD	2.46	0.56
1:B:146:PHE:HB2	1:B:173:LEU:HD13	1.91	0.53
1:A:283:LYS:C	1:A:283:LYS:HE3	2.29	0.53

Continued on next page...

Continued from previous page...

Atom-1	Atom-2	Interatomic distance (Å)	Clash overlap (Å)
1:A:155:GLU:HA	1:A:158:GLN:HG2	1.91	0.52
1:A:13:ASN:HB3	1:A:42[A]:MET:CE	2.43	0.48
1:B:167:PRO:HB2	1:B:171:LEU:HD13	1.95	0.48
1:B:13:ASN:ND2	1:B:42[B]:MET:HG2	2.29	0.47
1:A:244:ARG:NH1	6:A:721:HOH:O	2.43	0.46
1:B:113[B]:GLN:NE2	1:B:115:THR:OG1	2.50	0.45
1:A:154:GLU:O	1:A:158:GLN:HG2	2.17	0.45
1:B:149:MET:O	1:B:153:THR:HG23	2.17	0.45
1:B:111:ASN:ND2	6:B:459:HOH:O	2.49	0.45
1:B:208:ASP:HA	1:B:229:ARG:HH22	1.83	0.44
1:A:195:GLU:HG3	6:A:331:HOH:O	2.17	0.44
1:B:110:ASP:O	1:B:111:ASN:HB2	2.17	0.44
1:B:104[A]:MET:HE3	1:B:104[A]:MET:HB3	1.91	0.44
1:B:208:ASP:OD1	1:B:229:ARG:NH2	2.46	0.44
1:B:49[B]:CYS:SG	1:B:143:PRO:HD2	2.58	0.44
1:B:44[A]:ARG:HD2	1:B:102:GLN:OE1	2.17	0.44
1:B:287:GLN:O	1:B:291[B]:THR:OG1	2.35	0.43
1:A:244:ARG:CB	1:A:244:ARG:HH21	2.19	0.42
1:B:44[A]:ARG:CD	1:B:102:GLN:OE1	2.68	0.42
1:B:111:ASN:HD22	1:B:111:ASN:N	2.17	0.42
1:A:119:PRO:HB2	1:A:123:MET:HG2	2.03	0.41

There are no symmetry-related clashes.

5.3 Torsion angles [i](#)

5.3.1 Protein backbone [i](#)

In the following table, the Percentiles column shows the percent Ramachandran outliers of the chain as a percentile score with respect to all X-ray entries followed by that with respect to entries of similar resolution.

The Analysed column shows the number of residues for which the backbone conformation was analysed, and the total number of residues.

Mol	Chain	Analysed	Favoured	Allowed	Outliers	Percentiles	
1	A	316/326 (97%)	314 (99%)	2 (1%)	0	100	100
1	B	331/326 (102%)	329 (99%)	2 (1%)	0	100	100
All	All	647/652 (99%)	643 (99%)	4 (1%)	0	100	100

There are no Ramachandran outliers to report.

5.3.2 Protein sidechains ⓘ

In the following table, the Percentiles column shows the percent sidechain outliers of the chain as a percentile score with respect to all X-ray entries followed by that with respect to entries of similar resolution.

The Analysed column shows the number of residues for which the sidechain conformation was analysed, and the total number of residues.

Mol	Chain	Analysed	Rotameric	Outliers	Percentiles	
1	A	248/255 (97%)	244 (98%)	4 (2%)	70	41
1	B	262/255 (103%)	252 (96%)	10 (4%)	40	9
All	All	510/510 (100%)	496 (97%)	14 (3%)	52	19

All (14) residues with a non-rotameric sidechain are listed below:

Mol	Chain	Res	Type
1	A	78	TYR
1	A	93	ARG
1	A	283	LYS
1	A	312	LYS
1	B	42[A]	MET
1	B	42[B]	MET
1	B	43	ARG
1	B	78	TYR
1	B	111	ASN
1	B	158	GLN
1	B	171	LEU
1	B	229	ARG
1	B	241	ARG
1	B	283	LYS

Some sidechains can be flipped to improve hydrogen bonding and reduce clashes. All (6) such sidechains are listed below:

Mol	Chain	Res	Type
1	A	34	ASN
1	A	128	ASN
1	A	236	GLN
1	B	111	ASN
1	B	118	HIS
1	B	236	GLN

5.3.3 RNA ⓘ

There are no RNA molecules in this entry.

5.4 Non-standard residues in protein, DNA, RNA chains ⓘ

There are no non-standard protein/DNA/RNA residues in this entry.

5.5 Carbohydrates ⓘ

There are no carbohydrates in this entry.

5.6 Ligand geometry ⓘ

Of 7 ligands modelled in this entry, 2 are monoatomic - leaving 5 for Mogul analysis.

In the following table, the Counts columns list the number of bonds (or angles) for which Mogul statistics could be retrieved, the number of bonds (or angles) that are observed in the model and the number of bonds (or angles) that are defined in the chemical component dictionary. The Link column lists molecule types, if any, to which the group is linked. The Z score for a bond length (or angle) is the number of standard deviations the observed value is removed from the expected value. A bond length (or angle) with $|Z| > 2$ is considered an outlier worth inspection. RMSZ is the root-mean-square of all Z scores of the bond lengths (or angles).

Mol	Type	Chain	Res	Link	Bond lengths			Bond angles		
					Counts	RMSZ	# $ Z > 2$	Counts	RMSZ	# $ Z > 2$
2	MZR	A	401	-	14,19,19	1.24	1 (7%)	14,28,28	1.43	2 (14%)
3	ADP	A	402	-	22,29,29	0.84	1 (4%)	27,45,45	2.14	5 (18%)
5	GOL	B	327	-	5,5,5	0.50	0	5,5,5	0.74	0
2	MZR	B	401	-	14,19,19	1.10	1 (7%)	14,28,28	1.88	2 (14%)
3	ADP	B	402	-	22,29,29	1.16	1 (4%)	27,45,45	2.37	6 (22%)

In the following table, the Chirals column lists the number of chiral outliers, the number of chiral centers analysed, the number of these observed in the model and the number defined in the chemical component dictionary. Similar counts are reported in the Torsion and Rings columns. '-' means no outliers of that kind were identified.

Mol	Type	Chain	Res	Link	Chirals	Torsions	Rings
2	MZR	A	401	-	-	0/2/26/26	0/2/2/2
3	ADP	A	402	-	-	0/12/32/32	0/3/3/3
5	GOL	B	327	-	-	0/4/4/4	0/0/0/0
2	MZR	B	401	-	-	0/2/26/26	0/2/2/2

Continued on next page...

Continued from previous page...

Mol	Type	Chain	Res	Link	Chirals	Torsions	Rings
3	ADP	B	402	-	-	0/12/32/32	0/3/3/3

All (4) bond length outliers are listed below:

Mol	Chain	Res	Type	Atoms	Z	Observed(Å)	Ideal(Å)
3	A	402	ADP	C5-C4	2.10	1.45	1.40
2	A	401	MZR	O3-C4	2.74	1.41	1.32
2	B	401	MZR	O3-C4	2.76	1.41	1.32
3	B	402	ADP	C5-C4	2.79	1.46	1.40

All (15) bond angle outliers are listed below:

Mol	Chain	Res	Type	Atoms	Z	Observed(°)	Ideal(°)
3	B	402	ADP	N3-C2-N1	-9.56	121.57	128.89
3	A	402	ADP	C2'-C1'-N9	-6.76	103.97	114.29
3	A	402	ADP	N3-C2-N1	-6.00	124.30	128.89
2	B	401	MZR	C4'-O4'-C1'	-3.86	105.47	109.72
3	A	402	ADP	C4-C5-N7	-3.65	106.12	109.48
3	B	402	ADP	C1'-N9-C4	-3.57	121.55	126.94
3	B	402	ADP	C2'-C1'-N9	-3.42	109.07	114.29
2	A	401	MZR	C4'-O4'-C1'	-2.42	107.06	109.72
3	B	402	ADP	O5'-PA-O1A	-2.08	101.54	109.62
2	A	401	MZR	O5'-C5'-C4'	2.06	118.14	111.33
3	B	402	ADP	C2-N1-C6	2.19	122.68	118.77
3	A	402	ADP	O2A-PA-O3A	2.20	115.06	105.09
3	A	402	ADP	O3B-PB-O2B	2.89	118.37	107.38
3	B	402	ADP	O3B-PB-O1B	3.23	120.98	110.58
2	B	401	MZR	O6-C6-N1	3.88	128.05	122.59

There are no chirality outliers.

There are no torsion outliers.

There are no ring outliers.

No monomer is involved in short contacts.

5.7 Other polymers ⓘ

There are no such residues in this entry.

5.8 Polymer linkage issues ⓘ

There are no chain breaks in this entry.

6 Fit of model and data ⓘ

6.1 Protein, DNA and RNA chains ⓘ

In the following table, the column labelled ‘#RSRZ> 2’ contains the number (and percentage) of RSRZ outliers, followed by percent RSRZ outliers for the chain as percentile scores relative to all X-ray entries and entries of similar resolution. The OWAB column contains the minimum, median, 95th percentile and maximum values of the occupancy-weighted average B-factor per residue. The column labelled ‘Q< 0.9’ lists the number of (and percentage) of residues with an average occupancy less than 0.9.

Mol	Chain	Analysed	<RSRZ>	#RSRZ>2	OWAB(Å ²)	Q<0.9
1	A	311/326 (95%)	-0.16	3 (0%) 84 86	7, 12, 23, 40	0
1	B	320/326 (98%)	0.09	14 (4%) 38 39	8, 16, 29, 45	0
All	All	631/652 (96%)	-0.03	17 (2%) 58 62	7, 14, 27, 45	0

All (17) RSRZ outliers are listed below:

Mol	Chain	Res	Type	RSRZ
1	B	321	HIS	6.4
1	B	232	ASP	5.6
1	B	231	ARG	5.0
1	A	312	LYS	4.7
1	A	232	ASP	3.5
1	B	233	GLY	3.2
1	B	135	ASP	3.1
1	B	158	GLN	2.8
1	B	134	LYS	2.7
1	B	320	GLU	2.6
1	B	312	LYS	2.5
1	B	42[A]	MET	2.4
1	B	140	ILE	2.4
1	B	310	ARG	2.3
1	A	310	ARG	2.2
1	B	164	ILE	2.2
1	B	53	ILE	2.1

6.2 Non-standard residues in protein, DNA, RNA chains ⓘ

There are no non-standard protein/DNA/RNA residues in this entry.

6.3 Carbohydrates [i](#)

There are no carbohydrates in this entry.

6.4 Ligands [i](#)

In the following table, the Atoms column lists the number of modelled atoms in the group and the number defined in the chemical component dictionary. LLDF column lists the quality of electron density of the group with respect to its neighbouring residues in protein, DNA or RNA chains. The B-factors column lists the minimum, median, 95th percentile and maximum values of B factors of atoms in the group. The column labelled 'Q< 0.9' lists the number of atoms with occupancy less than 0.9.

Mol	Type	Chain	Res	Atoms	RSCC	RSR	LLDF	B-factors(\AA^2)	Q<0.9
5	GOL	B	327	6/6	0.83	0.15	4.94	27,34,35,36	0
2	MZR	A	401	18/18	0.94	0.09	0.38	9,12,15,18	0
4	NA	A	403	1/1	0.99	0.06	-0.21	11,11,11,11	0
3	ADP	A	402	27/27	0.99	0.07	-0.50	6,7,10,12	0
2	MZR	B	401	18/18	0.97	0.07	-0.51	8,12,16,17	0
3	ADP	B	402	27/27	0.98	0.07	-0.62	9,11,15,20	0
4	NA	B	403	1/1	0.99	0.07	-0.67	21,21,21,21	0

6.5 Other polymers [i](#)

There are no such residues in this entry.