



# Full wwPDB X-ray Structure Validation Report ⓘ

Feb 1, 2016 – 02:57 PM GMT

PDB ID : 4B1Y  
Title : Structure of the Phactr1 RPEL-3 bound to G-actin  
Authors : Mouilleron, S.; Wiezlak, M.; O'Reilly, N.; Treisman, R.; McDonald, N.Q.  
Deposited on : 2012-07-12  
Resolution : 1.29 Å(reported)

This is a Full wwPDB X-ray Structure Validation Report for a publicly released PDB entry.  
We welcome your comments at [validation@mail.wwpdb.org](mailto:validation@mail.wwpdb.org)  
A user guide is available at  
<http://wwpdb.org/validation/2016/XrayValidationReportHelp>  
with specific help available everywhere you see the ⓘ symbol.

---

The following versions of software and data (see [references ⓘ](#)) were used in the production of this report:

MolProbity : 4.02b-467  
Mogul : 1.7 (RC4), CSD as536be (2015)  
Xtriage (Phenix) : 1.9-1692  
EDS : rb-20026688  
Percentile statistics : 20151230.v01 (using entries in the PDB archive December 30th 2015)  
Refmac : 5.8.0135  
CCP4 : 6.5.0  
Ideal geometry (proteins) : Engh & Huber (2001)  
Ideal geometry (DNA, RNA) : Parkinson et al. (1996)  
Validation Pipeline (wwPDB-VP) : trunk26865

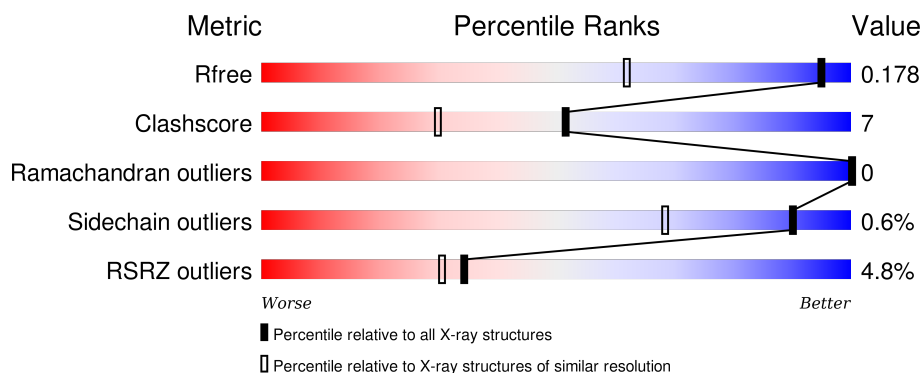
# 1 Overall quality at a glance

The following experimental techniques were used to determine the structure:

## *X-RAY DIFFRACTION*

The reported resolution of this entry is 1.29 Å.

Percentile scores (ranging between 0-100) for global validation metrics of the entry are shown in the following graphic. The table shows the number of entries on which the scores are based.



Metric	Whole archive (#Entries)	Similar resolution (#Entries, resolution range(Å))
$R_{free}$	91344	1475 (1.34-1.26)
Clashscore	102246	1031 (1.32-1.28)
Ramachandran outliers	100387	1504 (1.34-1.26)
Sidechain outliers	100360	1503 (1.34-1.26)
RSRZ outliers	91569	1476 (1.34-1.26)

The table below summarises the geometric issues observed across the polymeric chains and their fit to the electron density. The red, orange, yellow and green segments on the lower bar indicate the fraction of residues that contain outliers for  $\geq 3$ , 2, 1 and 0 types of geometric quality criteria. A grey segment represents the fraction of residues that are not modelled. The numeric value for each fraction is indicated below the corresponding segment, with a dot representing fractions  $\leq 5\%$ . The upper red bar (where present) indicates the fraction of residues that have poor fit to the electron density. The numeric value is given above the bar.

Mol	Chain	Length	Quality of chain
1	B	376	
2	M	32	

The following table lists non-polymeric compounds, carbohydrate monomers and non-standard residues in protein, DNA, RNA chains that are outliers for geometric or electron-density-fit criteria:

Mol	Type	Chain	Res	Chirality	Geometry	Clashes	Electron density
6	1PE	B	1379	-	-	-	X
8	PEG	B	1381	-	-	-	X
8	PEG	B	1382	-	-	-	X
9	P6G	M	1523	-	-	-	X

## 2 Entry composition [i](#)

There are 10 unique types of molecules in this entry. The entry contains 4062 atoms, of which 0 are hydrogens and 0 are deuteriums.

In the tables below, the ZeroOcc column contains the number of atoms modelled with zero occupancy, the AltConf column contains the number of residues with at least one atom in alternate conformation and the Trace column contains the number of residues modelled with at most 2 atoms.

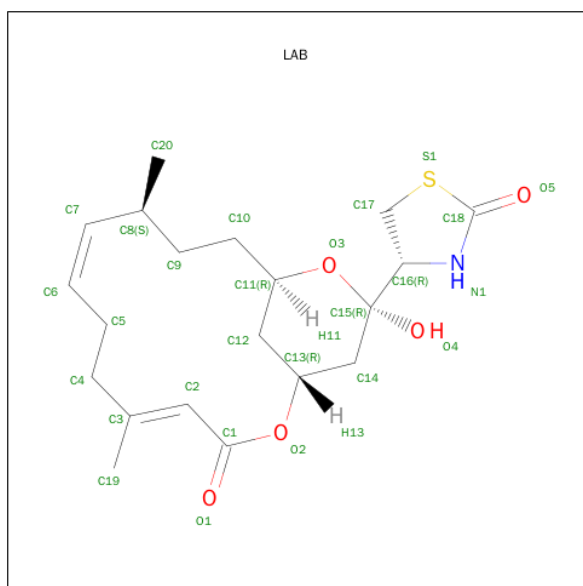
- Molecule 1 is a protein called ACTIN, ALPHA SKELETAL MUSCLE.

Mol	Chain	Residues	Atoms					ZeroOcc	AltConf	Trace
1	B	364	Total	C	N	O	S	0	43	0
			3085	1970	501	589	25			

- Molecule 2 is a protein called PHOSPHATASE AND ACTIN REGULATOR 1.

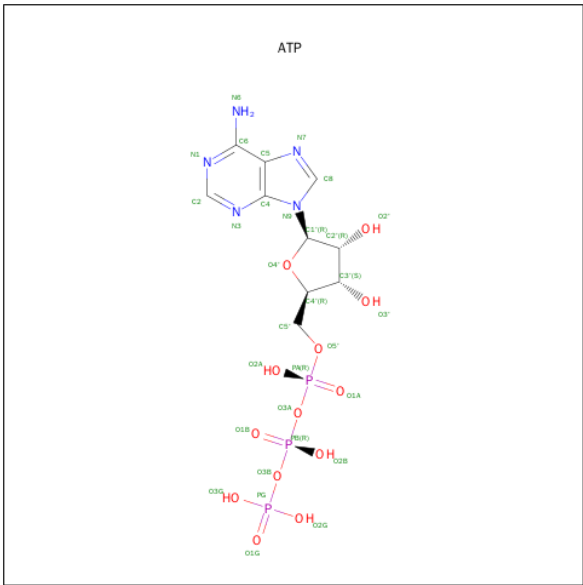
Mol	Chain	Residues	Atoms				ZeroOcc	AltConf	Trace
2	M	30	Total	C	N	O	0	5	0
			299	189	70	40			

- Molecule 3 is LATRUNCULIN B (three-letter code: LAB) (formula:  $C_{20}H_{29}NO_5S$ ).



Mol	Chain	Residues	Atoms					ZeroOcc	AltConf
3	B	1	Total	C	N	O	S	0	0
			27	20	1	5	1		

- Molecule 4 is ADENOSINE-5'-TRIPHOSPHATE (three-letter code: ATP) (formula:  $C_{10}H_{16}N_5O_{13}P_3$ ).

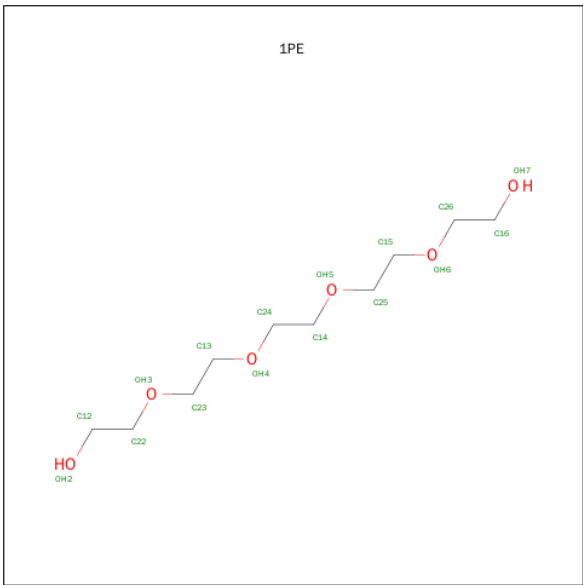


Mol	Chain	Residues	Atoms					ZeroOcc	AltConf
4	B	1	Total	C	N	O	P	0	0
			31	10	5	13	3		

- Molecule 5 is MAGNESIUM ION (three-letter code: MG) (formula: Mg).

Mol	Chain	Residues	Atoms		ZeroOcc	AltConf
5	B	1	Total	Mg	0	0
			1	1		

- Molecule 6 is PENTAETHYLENE GLYCOL (three-letter code: 1PE) (formula: C<sub>10</sub>H<sub>22</sub>O<sub>6</sub>).



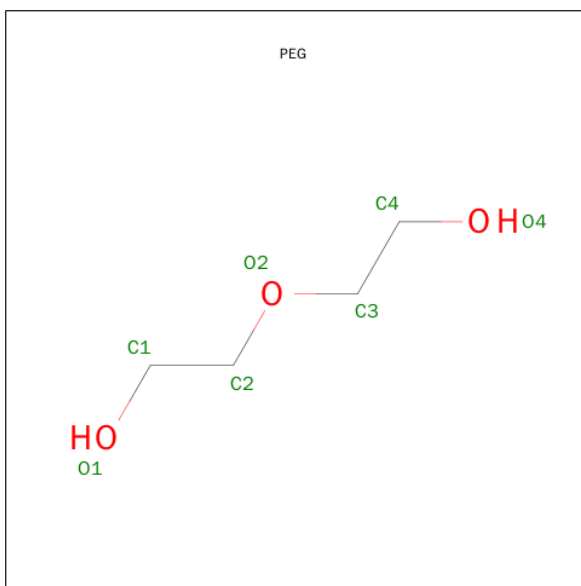
Mol	Chain	Residues	Atoms			ZeroOcc	AltConf
6	B	1	Total	C	O	0	0
			16	10	6		

- Molecule 7 is GLYCEROL (three-letter code: GOL) (formula:  $C_3H_8O_3$ ).



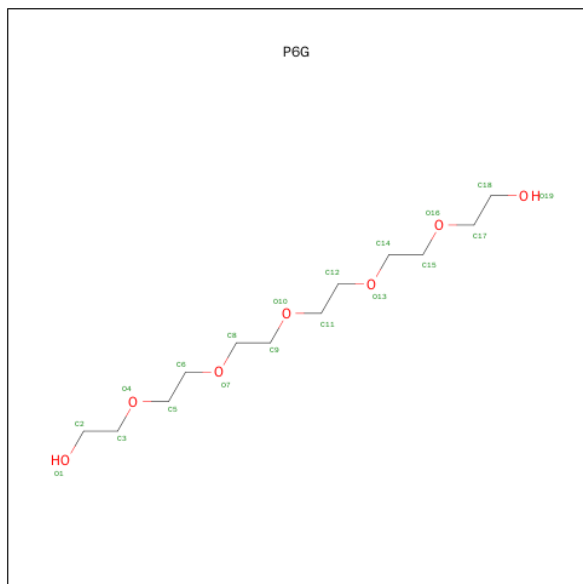
Mol	Chain	Residues	Atoms			ZeroOcc	AltConf
7	B	1	Total	C	O	0	0
			6	3	3		

- Molecule 8 is DI(HYDROXYETHYL)ETHER (three-letter code: PEG) (formula:  $C_4H_{10}O_3$ ).



Mol	Chain	Residues	Atoms			ZeroOcc	AltConf
8	B	1	Total	C	O	0	0
			7	4	3		
8	B	1	Total	C	O	0	0
			7	4	3		
8	B	1	Total	C	O	0	0
			7	4	3		

- Molecule 9 is HEXAETHYLENE GLYCOL (three-letter code: P6G) (formula: C<sub>12</sub>H<sub>26</sub>O<sub>7</sub>).



Mol	Chain	Residues	Atoms			ZeroOcc	AltConf
9	M	1	Total	C	O	0	0
			19	12	7		

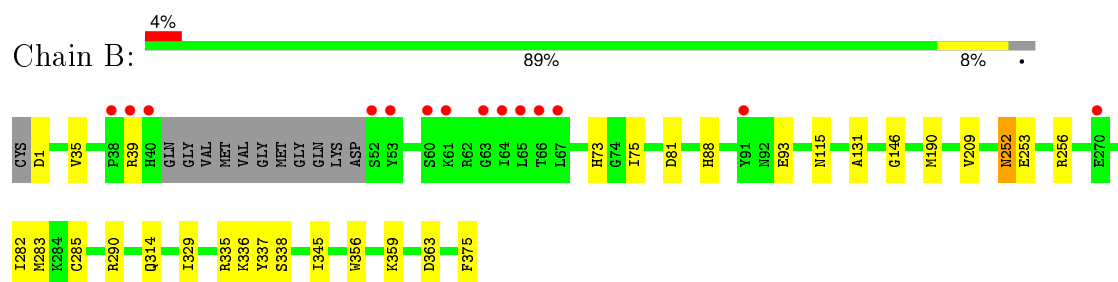
- Molecule 10 is water.

Mol	Chain	Residues	Atoms		ZeroOcc	AltConf
10	B	528	Total	O	0	1
			529	529		
10	M	28	Total	O	0	0
			28	28		

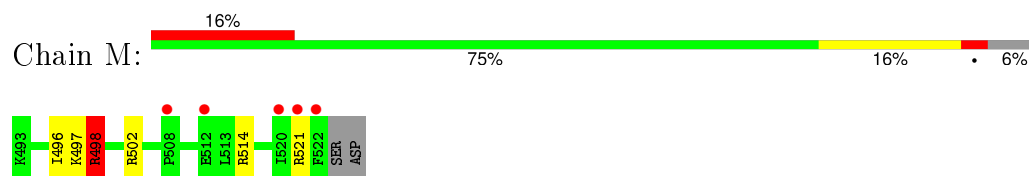
### 3 Residue-property plots

These plots are drawn for all protein, RNA and DNA chains in the entry. The first graphic for a chain summarises the proportions of errors displayed in the second graphic. The second graphic shows the sequence view annotated by issues in geometry and electron density. Residues are color-coded according to the number of geometric quality criteria for which they contain at least one outlier: green = 0, yellow = 1, orange = 2 and red = 3 or more. A red dot above a residue indicates a poor fit to the electron density ( $RSRZ > 2$ ). Stretches of 2 or more consecutive residues without any outlier are shown as a green connector. Residues present in the sample, but not in the model, are shown in grey.

- Molecule 1: ACTIN, ALPHA SKELETAL MUSCLE



- Molecule 2: PHOSPHATASE AND ACTIN REGULATOR 1





## 4 Data and refinement statistics

Property	Value	Source
Space group	P 1 21 1	Depositor
Cell constants a, b, c, $\alpha$ , $\beta$ , $\gamma$	52.58Å 63.56Å 62.57Å 90.00° 108.83° 90.00°	Depositor
Resolution (Å)	29.42 – 1.29 29.42 – 1.29	Depositor EDS
% Data completeness (in resolution range)	97.8 (29.42-1.29) 99.5 (29.42-1.29)	Depositor EDS
$R_{merge}$	0.05	Depositor
$R_{sym}$	(Not available)	Depositor
$\langle I/\sigma(I) \rangle$ <sup>1</sup>	2.31 (at 1.29Å)	Xtriage
Refinement program	PHENIX (PHENIX.REFINE)	Depositor
R, $R_{free}$	0.150 , 0.174 0.157 , 0.178	Depositor DCC
$R_{free}$ test set	4928 reflections (5.32%)	DCC
Wilson B-factor (Å <sup>2</sup> )	10.7	Xtriage
Anisotropy	0.168	Xtriage
Bulk solvent $k_{sol}$ (e/Å <sup>3</sup> ), $B_{sol}$ (Å <sup>2</sup> )	0.36 , 50.3	EDS
Estimated twinning fraction	No twinning to report.	Xtriage
L-test for twinning <sup>2</sup>	$\langle  L  \rangle = 0.49$ , $\langle L^2 \rangle = 0.32$	Xtriage
Outliers	0 of 97624 reflections	Xtriage
$F_o, F_c$ correlation	0.97	EDS
Total number of atoms	4062	wwPDB-VP
Average B, all atoms (Å <sup>2</sup> )	17.0	wwPDB-VP

Xtriage's analysis on translational NCS is as follows: *The largest off-origin peak in the Patterson function is 6.23% of the height of the origin peak. No significant pseudotranslation is detected.*

<sup>1</sup>Intensities estimated from amplitudes.

<sup>2</sup>Theoretical values of  $\langle |L| \rangle$ ,  $\langle L^2 \rangle$  for acentric reflections are 0.5, 0.375 respectively for untwinned datasets, and 0.333, 0.2 for perfectly twinned datasets.

## 5 Model quality [i](#)

### 5.1 Standard geometry [i](#)

Bond lengths and bond angles in the following residue types are not validated in this section: GOL, MG, ATP, LAB, 1PE, P6G, PEG

The Z score for a bond length (or angle) is the number of standard deviations the observed value is removed from the expected value. A bond length (or angle) with  $|Z| > 5$  is considered an outlier worth inspection. RMSZ is the root-mean-square of all Z scores of the bond lengths (or angles).

Mol	Chain	Bond lengths		Bond angles	
		RMSZ	$\# Z  > 5$	RMSZ	$\# Z  > 5$
1	B	0.35	0/3242	0.54	0/4390
2	M	0.28	0/315	0.74	2/414 (0.5%)
All	All	0.34	0/3557	0.56	2/4804 (0.0%)

There are no bond length outliers.

All (2) bond angle outliers are listed below:

Mol	Chain	Res	Type	Atoms	Z	Observed(°)	Ideal(°)
2	M	498[A]	ARG	NE-CZ-NH1	5.33	122.97	120.30
2	M	498[B]	ARG	NE-CZ-NH1	5.33	122.97	120.30

There are no chirality outliers.

There are no planarity outliers.

### 5.2 Too-close contacts [i](#)

In the following table, the Non-H and H(model) columns list the number of non-hydrogen atoms and hydrogen atoms in the chain respectively. The H(added) column lists the number of hydrogen atoms added and optimized by MolProbity. The Clashes column lists the number of clashes within the asymmetric unit, whereas Symm-Clashes lists symmetry related clashes.

Mol	Chain	Non-H	H(model)	H(added)	Clashes	Symm-Clashes
1	B	3085	0	3108	38	0
2	M	299	0	356	10	0
3	B	27	0	29	0	0
4	B	31	0	12	0	0
5	B	1	0	0	0	0
6	B	16	0	22	0	0
7	B	6	0	8	0	0

*Continued on next page...*

*Continued from previous page...*

Mol	Chain	Non-H	H(model)	H(added)	Clashes	Symm-Clashes
8	B	21	0	30	1	0
9	M	19	0	26	4	0
10	B	529	0	0	17	0
10	M	28	0	0	4	0
All	All	4062	0	3591	48	0

The all-atom clashscore is defined as the number of clashes found per 1000 atoms (including hydrogen atoms). The all-atom clashscore for this structure is 7.

All (48) close contacts within the same asymmetric unit are listed below, sorted by their clash magnitude.

Atom-1	Atom-2	Interatomic distance (Å)	Clash overlap (Å)
1:B:314[B]:GLN:OE1	10:B:2455:HOH:O	1.70	1.09
1:B:115[B]:ASN:ND2	10:B:2217:HOH:O	1.86	1.08
1:B:363[A]:ASP:OD1	10:B:2510:HOH:O	1.73	1.07
1:B:363[A]:ASP:OD2	10:B:2516:HOH:O	1.82	0.97
1:B:359[B]:LYS:CE	10:B:2511:HOH:O	1.99	0.95
1:B:363[A]:ASP:CG	10:B:2516:HOH:O	2.05	0.94
1:B:337[B]:TYR:OH	10:B:2496:HOH:O	1.59	0.93
1:B:363[A]:ASP:OD1	10:B:2516:HOH:O	1.90	0.89
2:M:498[A]:ARG:HH11	2:M:498[A]:ARG:HG3	1.43	0.82
1:B:337[A]:TYR:OH	10:B:2495:HOH:O	2.01	0.77
2:M:498[A]:ARG:NH1	10:M:2007:HOH:O	2.17	0.77
1:B:115[B]:ASN:ND2	10:B:2218:HOH:O	2.17	0.75
1:B:359[B]:LYS:NZ	10:B:2511:HOH:O	1.57	0.75
1:B:1[B]:ASP:OD1	1:B:1[B]:ASP:N	2.23	0.72
1:B:290[B]:ARG:HH11	1:B:290[B]:ARG:HG2	1.52	0.72
1:B:375:PHE:O	10:B:2283:HOH:O	2.07	0.71
1:B:359[B]:LYS:HE2	10:B:2511:HOH:O	1.76	0.71
1:B:73:HIS:NE2	10:B:2130:HOH:O	2.24	0.71
2:M:514:ARG:HH22	9:M:1523:P6G:H61	1.63	0.61
1:B:39:ARG:NH1	10:B:2087:HOH:O	2.34	0.61
1:B:290[B]:ARG:HG2	1:B:290[B]:ARG:NH1	2.09	0.60
1:B:190[B]:MET:HG2	1:B:209:VAL:HG21	1.84	0.59
1:B:285:CYS:O	1:B:290[B]:ARG:NE	2.37	0.57
1:B:115[B]:ASN:CG	10:B:2217:HOH:O	2.32	0.57
1:B:35[B]:VAL:HG21	1:B:81:ASP:HB3	1.87	0.55
1:B:75[A]:ILE:HD11	10:B:2207:HOH:O	2.06	0.55
1:B:146:GLY:HA3	2:M:496:ILE:HD12	1.89	0.54
8:B:1381:PEG:O4	9:M:1523:P6G:O19	2.20	0.53
2:M:514:ARG:NH2	9:M:1523:P6G:H61	2.23	0.53

*Continued on next page...*

Continued from previous page...

Atom-1	Atom-2	Interatomic distance (Å)	Clash overlap (Å)
2:M:521:ARG:NH1	10:M:2025:HOH:O	2.42	0.52
1:B:335:ARG:HA	1:B:338[B]:SER:OG	2.11	0.51
2:M:502[A]:ARG:NH1	10:M:2016:HOH:O	2.47	0.48
1:B:336[B]:LYS:HE2	1:B:337[B]:TYR:CZ	2.49	0.47
2:M:498[A]:ARG:HH11	2:M:498[A]:ARG:CG	2.20	0.47
1:B:252:ASN:HD22	1:B:253:GLU:N	2.13	0.46
1:B:283:MET:SD	1:B:290[B]:ARG:NH1	2.89	0.46
2:M:498[A]:ARG:HG3	2:M:498[A]:ARG:NH1	2.23	0.44
1:B:35[B]:VAL:HG21	1:B:81:ASP:CG	2.38	0.44
1:B:282:ILE:CG2	1:B:290[B]:ARG:HG3	2.48	0.44
1:B:252:ASN:ND2	1:B:256:ARG:HH11	2.15	0.43
1:B:314[A]:GLN:OE1	1:B:329:ILE:HG12	2.18	0.43
9:M:1523:P6G:H121	10:M:2028:HOH:O	2.19	0.42
1:B:345:ILE:HG23	2:M:497:LYS:HG2	2.02	0.42
1:B:282:ILE:HG23	1:B:290[B]:ARG:HG3	2.02	0.42
1:B:88:HIS:HE1	1:B:93:GLU:OE2	2.04	0.41
1:B:282:ILE:O	1:B:290[B]:ARG:HD2	2.20	0.40
1:B:35[B]:VAL:HG21	1:B:81:ASP:CB	2.49	0.40
1:B:131:ALA:HB1	1:B:356:TRP:HB3	2.04	0.40

There are no symmetry-related clashes.

## 5.3 Torsion angles [i](#)

### 5.3.1 Protein backbone [i](#)

In the following table, the Percentiles column shows the percent Ramachandran outliers of the chain as a percentile score with respect to all X-ray entries followed by that with respect to entries of similar resolution.

The Analysed column shows the number of residues for which the backbone conformation was analysed, and the total number of residues.

Mol	Chain	Analysed	Favoured	Allowed	Outliers	Percentiles	
1	B	403/376 (107%)	397 (98%)	6 (2%)	0	100	100
2	M	33/32 (103%)	33 (100%)	0	0	100	100
All	All	436/408 (107%)	430 (99%)	6 (1%)	0	100	100

There are no Ramachandran outliers to report.

### 5.3.2 Protein sidechains ⓘ

In the following table, the Percentiles column shows the percent sidechain outliers of the chain as a percentile score with respect to all X-ray entries followed by that with respect to entries of similar resolution.

The Analysed column shows the number of residues for which the sidechain conformation was analysed, and the total number of residues.

Mol	Chain	Analysed	Rotameric	Outliers	Percentiles	
1	B	348/319 (109%)	347 (100%)	1 (0%)	94	79
2	M	33/32 (103%)	31 (94%)	2 (6%)	23	1
All	All	381/351 (108%)	378 (99%)	3 (1%)	90	60

All (3) residues with a non-rotameric sidechain are listed below:

Mol	Chain	Res	Type
1	B	252	ASN
2	M	498[A]	ARG
2	M	498[B]	ARG

Some sidechains can be flipped to improve hydrogen bonding and reduce clashes. All (4) such sidechains are listed below:

Mol	Chain	Res	Type
1	B	59	GLN
1	B	88	HIS
1	B	252	ASN
1	B	280	ASN

### 5.3.3 RNA ⓘ

There are no RNA molecules in this entry.

## 5.4 Non-standard residues in protein, DNA, RNA chains ⓘ

There are no non-standard protein/DNA/RNA residues in this entry.

## 5.5 Carbohydrates ⓘ

There are no carbohydrates in this entry.

## 5.6 Ligand geometry

Of 9 ligands modelled in this entry, 1 is monoatomic - leaving 8 for Mogul analysis.

In the following table, the Counts columns list the number of bonds (or angles) for which Mogul statistics could be retrieved, the number of bonds (or angles) that are observed in the model and the number of bonds (or angles) that are defined in the chemical component dictionary. The Link column lists molecule types, if any, to which the group is linked. The Z score for a bond length (or angle) is the number of standard deviations the observed value is removed from the expected value. A bond length (or angle) with  $|Z| > 2$  is considered an outlier worth inspection. RMSZ is the root-mean-square of all Z scores of the bond lengths (or angles).

Mol	Type	Chain	Res	Link	Bond lengths			Bond angles		
					Counts	RMSZ	# $ Z  > 2$	Counts	RMSZ	# $ Z  > 2$
3	LAB	B	1376	-	27,29,29	4.25	7 (25%)	28,41,41	3.72	9 (32%)
4	ATP	B	1377	5	24,33,33	1.39	3 (12%)	31,52,52	1.86	2 (6%)
6	1PE	B	1379	-	15,15,15	0.68	0	14,14,14	1.51	0
7	GOL	B	1380	-	5,5,5	0.31	0	5,5,5	0.33	0
8	PEG	B	1381	-	6,6,6	0.39	0	5,5,5	0.51	0
8	PEG	B	1382	-	6,6,6	0.46	0	5,5,5	0.26	0
8	PEG	B	1383	-	6,6,6	0.45	0	5,5,5	0.29	0
9	P6G	M	1523	-	18,18,18	0.71	0	17,17,17	1.57	0

In the following table, the Chirals column lists the number of chiral outliers, the number of chiral centers analysed, the number of these observed in the model and the number defined in the chemical component dictionary. Similar counts are reported in the Torsion and Rings columns. '-' means no outliers of that kind were identified.

Mol	Type	Chain	Res	Link	Chirals	Torsions	Rings
3	LAB	B	1376	-	-	0/21/49/49	0/1/3/3
4	ATP	B	1377	5	-	0/18/38/38	0/3/3/3
6	1PE	B	1379	-	-	0/13/13/13	0/0/0/0
7	GOL	B	1380	-	-	0/4/4/4	0/0/0/0
8	PEG	B	1381	-	-	0/4/4/4	0/0/0/0
8	PEG	B	1382	-	-	0/4/4/4	0/0/0/0
8	PEG	B	1383	-	-	0/4/4/4	0/0/0/0
9	P6G	M	1523	-	-	0/16/16/16	0/0/0/0

All (10) bond length outliers are listed below:

Mol	Chain	Res	Type	Atoms	Z	Observed(Å)	Ideal(Å)
3	B	1376	LAB	C17-S1	-8.93	1.64	1.81
3	B	1376	LAB	C14-C13	-5.65	1.40	1.51
4	B	1377	ATP	C2'-C3'	-4.20	1.42	1.53
4	B	1377	ATP	O4'-C4'	-2.04	1.40	1.45

*Continued on next page...*

*Continued from previous page...*

Mol	Chain	Res	Type	Atoms	Z	Observed(Å)	Ideal(Å)
3	B	1376	LAB	C17-C16	3.25	1.59	1.53
4	B	1377	ATP	C6-N6	3.81	1.46	1.34
3	B	1376	LAB	O5-C18	8.44	1.35	1.22
3	B	1376	LAB	C16-N1	8.94	1.56	1.46
3	B	1376	LAB	C2-C3	9.45	1.54	1.33
3	B	1376	LAB	C18-N1	10.07	1.51	1.36

All (11) bond angle outliers are listed below:

Mol	Chain	Res	Type	Atoms	Z	Observed(°)	Ideal(°)
3	B	1376	LAB	O5-C18-N1	-17.51	105.90	125.81
4	B	1377	ATP	N3-C2-N1	-8.57	122.33	128.89
3	B	1376	LAB	C19-C3-C2	-3.72	110.63	122.42
3	B	1376	LAB	C16-N1-C18	-3.32	108.70	113.04
3	B	1376	LAB	C19-C3-C4	-2.50	111.58	115.41
3	B	1376	LAB	O1-C1-C2	-2.19	120.42	126.20
4	B	1377	ATP	C4-C5-N7	-2.15	107.50	109.48
3	B	1376	LAB	C3-C2-C1	-2.02	122.79	127.73
3	B	1376	LAB	C16-C17-S1	2.76	110.16	105.94
3	B	1376	LAB	C5-C4-C3	2.79	121.79	112.71
3	B	1376	LAB	O2-C1-C2	3.11	119.17	111.51

There are no chirality outliers.

There are no torsion outliers.

There are no ring outliers.

2 monomers are involved in 4 short contacts:

Mol	Chain	Res	Type	Clashes	Symm-Clashes
8	B	1381	PEG	1	0
9	M	1523	P6G	4	0

## 5.7 Other polymers [i](#)

There are no such residues in this entry.

## 5.8 Polymer linkage issues [i](#)

There are no chain breaks in this entry.

## 6 Fit of model and data [i](#)

### 6.1 Protein, DNA and RNA chains [i](#)

In the following table, the column labelled ‘#RSRZ> 2’ contains the number (and percentage) of RSRZ outliers, followed by percent RSRZ outliers for the chain as percentile scores relative to all X-ray entries and entries of similar resolution. The OWAB column contains the minimum, median, 95<sup>th</sup> percentile and maximum values of the occupancy-weighted average B-factor per residue. The column labelled ‘Q< 0.9’ lists the number of (and percentage) of residues with an average occupancy less than 0.9.

Mol	Chain	Analysed	<RSRZ>	#RSRZ>2	OWAB(Å <sup>2</sup> )	Q<0.9
1	B	364/376 (96%)	0.09	14 (3%) 44 39	7, 12, 27, 55	0
2	M	30/32 (93%)	0.68	5 (16%) 2 3	14, 21, 34, 40	1 (3%)
All	All	394/408 (96%)	0.14	19 (4%) 34 30	7, 13, 29, 55	1 (0%)

All (19) RSRZ outliers are listed below:

Mol	Chain	Res	Type	RSRZ
1	B	53	TYR	5.5
1	B	65	LEU	4.3
2	M	522	PHE	4.2
1	B	64	ILE	4.1
1	B	38	PRO	3.4
1	B	40	HIS	3.4
1	B	66	THR	3.3
1	B	91[A]	TYR	2.9
1	B	63	GLY	2.4
1	B	52	SER	2.4
2	M	508	PRO	2.3
1	B	39	ARG	2.3
2	M	521	ARG	2.3
1	B	67	LEU	2.2
1	B	270	GLU	2.2
2	M	520	ILE	2.1
2	M	512	GLU	2.1
1	B	61	LYS	2.1
1	B	60[A]	SER	2.1

### 6.2 Non-standard residues in protein, DNA, RNA chains [i](#)

There are no non-standard protein/DNA/RNA residues in this entry.



### 6.3 Carbohydrates [i](#)

There are no carbohydrates in this entry.

### 6.4 Ligands [i](#)

In the following table, the Atoms column lists the number of modelled atoms in the group and the number defined in the chemical component dictionary. LLDF column lists the quality of electron density of the group with respect to its neighbouring residues in protein, DNA or RNA chains. The B-factors column lists the minimum, median, 95<sup>th</sup> percentile and maximum values of B factors of atoms in the group. The column labelled 'Q< 0.9' lists the number of atoms with occupancy less than 0.9.

Mol	Type	Chain	Res	Atoms	RSCC	RSR	LLDF	B-factors( $\text{\AA}^2$ )	Q<0.9
8	PEG	B	1381	7/7	0.85	0.24	8.78	34,35,46,48	0
6	1PE	B	1379	16/16	0.87	0.13	2.47	20,36,50,54	0
8	PEG	B	1382	7/7	0.67	0.24	2.39	34,37,46,49	0
9	P6G	M	1523	19/19	0.83	0.20	2.31	22,40,54,54	0
3	LAB	B	1376	27/27	0.97	0.07	-0.26	9,10,14,14	0
5	MG	B	1378	1/1	1.00	0.07	-0.36	7,7,7,7	0
4	ATP	B	1377	31/31	0.99	0.07	-0.55	6,8,9,10	0
7	GOL	B	1380	6/6	0.83	0.14	-	31,35,42,48	0
8	PEG	B	1383	7/7	0.84	0.35	-	31,35,42,44	0

### 6.5 Other polymers [i](#)

There are no such residues in this entry.