



# Full wwPDB X-ray Structure Validation Report ⓘ

Feb 1, 2016 – 07:33 AM GMT

PDB ID : 3B8V  
Title : Crystal structure of Escherichia coli alaine racemase mutant E221K  
Authors : Wu, D.; Hu, T.; Zhang, L.; Jiang, H.; Shen, X.  
Deposited on : 2007-11-02  
Resolution : 2.60 Å(reported)

This is a Full wwPDB X-ray Structure Validation Report for a publicly released PDB entry.  
We welcome your comments at [validation@mail.wwpdb.org](mailto:validation@mail.wwpdb.org)  
A user guide is available at  
<http://wwpdb.org/validation/2016/XrayValidationReportHelp>  
with specific help available everywhere you see the ⓘ symbol.

---

The following versions of software and data (see [references ⓘ](#)) were used in the production of this report:

MolProbity : 4.02b-467  
Mogul : 1.7 (RC4), CSD as536be (2015)  
Xtriage (Phenix) : 1.9-1692  
EDS : rb-20026688  
Percentile statistics : 20151230.v01 (using entries in the PDB archive December 30th 2015)  
Refmac : 5.8.0135  
CCP4 : 6.5.0  
Ideal geometry (proteins) : Engh & Huber (2001)  
Ideal geometry (DNA, RNA) : Parkinson et al. (1996)  
Validation Pipeline (wwPDB-VP) : trunk26865

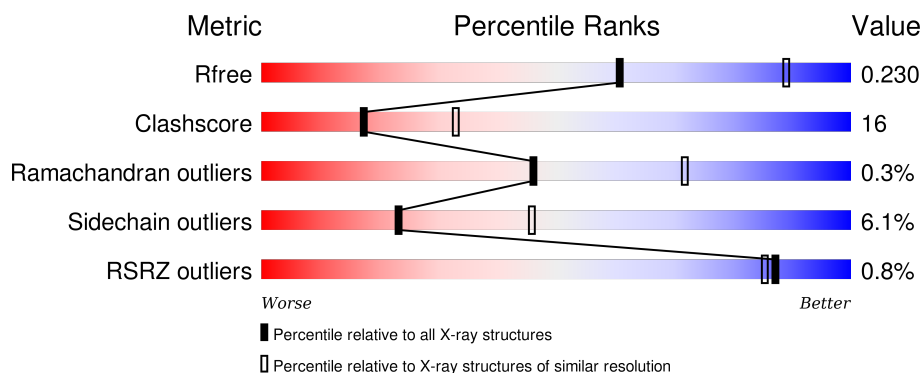
# 1 Overall quality at a glance

The following experimental techniques were used to determine the structure:

*X-RAY DIFFRACTION*

The reported resolution of this entry is 2.60 Å.

Percentile scores (ranging between 0-100) for global validation metrics of the entry are shown in the following graphic. The table shows the number of entries on which the scores are based.



Metric	Whole archive (#Entries)	Similar resolution (#Entries, resolution range(Å))
$R_{free}$	91344	2328 (2.60-2.60)
Clashscore	102246	2679 (2.60-2.60)
Ramachandran outliers	100387	2635 (2.60-2.60)
Sidechain outliers	100360	2635 (2.60-2.60)
RSRZ outliers	91569	2334 (2.60-2.60)

The table below summarises the geometric issues observed across the polymeric chains and their fit to the electron density. The red, orange, yellow and green segments on the lower bar indicate the fraction of residues that contain outliers for  $\geq 3$ , 2, 1 and 0 types of geometric quality criteria. A grey segment represents the fraction of residues that are not modelled. The numeric value for each fraction is indicated below the corresponding segment, with a dot representing fractions  $\leq 5\%$ . The upper red bar (where present) indicates the fraction of residues that have poor fit to the electron density. The numeric value is given above the bar.

Mol	Chain	Length	Quality of chain
1	A	379	
1	B	379	
1	C	379	
1	D	379	

The following table lists non-polymeric compounds, carbohydrate monomers and non-standard

residues in protein, DNA, RNA chains that are outliers for geometric or electron-density-fit criteria:

Mol	Type	Chain	Res	Chirality	Geometry	Clashes	Electron density
2	SO4	A	360	-	-	-	X
2	SO4	A	363	-	-	X	-
2	SO4	B	360	-	-	-	X
2	SO4	C	360	-	-	X	X
3	PLP	D	1001	-	X	-	-

## 2 Entry composition

There are 4 unique types of molecules in this entry. The entry contains 11543 atoms, of which 0 are hydrogens and 0 are deuteriums.

In the tables below, the ZeroOcc column contains the number of atoms modelled with zero occupancy, the AltConf column contains the number of residues with at least one atom in alternate conformation and the Trace column contains the number of residues modelled with at most 2 atoms.

- Molecule 1 is a protein called Alanine racemase.

Mol	Chain	Residues	Atoms					ZeroOcc	AltConf	Trace
1	A	359	Total	C	N	O	S	0	0	0
			2754	1735	499	505	15			
1	B	359	Total	C	N	O	S	0	0	0
			2754	1735	499	505	15			
1	C	355	Total	C	N	O	S	0	0	0
			2723	1717	494	498	14			
1	D	353	Total	C	N	O	S	0	0	0
			2708	1708	492	495	13			

There are 84 discrepancies between the modelled and reference sequences:

Chain	Residue	Modelled	Actual	Comment	Reference
A	-19	MET	-	EXPRESSION TAG	UNP P0A6B4
A	-18	GLY	-	EXPRESSION TAG	UNP P0A6B4
A	-17	SER	-	EXPRESSION TAG	UNP P0A6B4
A	-16	SER	-	EXPRESSION TAG	UNP P0A6B4
A	-15	HIS	-	EXPRESSION TAG	UNP P0A6B4
A	-14	HIS	-	EXPRESSION TAG	UNP P0A6B4
A	-13	HIS	-	EXPRESSION TAG	UNP P0A6B4
A	-12	HIS	-	EXPRESSION TAG	UNP P0A6B4
A	-11	HIS	-	EXPRESSION TAG	UNP P0A6B4
A	-10	HIS	-	EXPRESSION TAG	UNP P0A6B4
A	-9	SER	-	EXPRESSION TAG	UNP P0A6B4
A	-8	SER	-	EXPRESSION TAG	UNP P0A6B4
A	-7	GLY	-	EXPRESSION TAG	UNP P0A6B4
A	-6	LEU	-	EXPRESSION TAG	UNP P0A6B4
A	-5	VAL	-	EXPRESSION TAG	UNP P0A6B4
A	-4	PRO	-	EXPRESSION TAG	UNP P0A6B4
A	-3	ARG	-	EXPRESSION TAG	UNP P0A6B4
A	-2	GLY	-	EXPRESSION TAG	UNP P0A6B4
A	-1	SER	-	EXPRESSION TAG	UNP P0A6B4
A	0	HIS	-	EXPRESSION TAG	UNP P0A6B4
A	221	LYS	GLU	ENGINEERED	UNP P0A6B4

*Continued on next page...*

*Continued from previous page...*

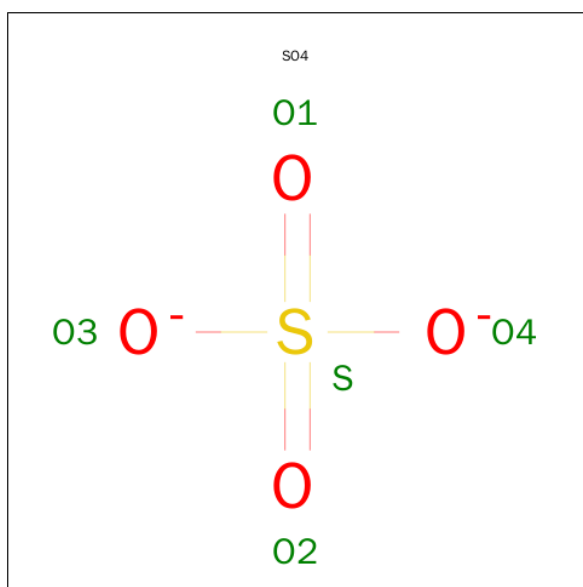
Chain	Residue	Modelled	Actual	Comment	Reference
B	-19	MET	-	EXPRESSION TAG	UNP P0A6B4
B	-18	GLY	-	EXPRESSION TAG	UNP P0A6B4
B	-17	SER	-	EXPRESSION TAG	UNP P0A6B4
B	-16	SER	-	EXPRESSION TAG	UNP P0A6B4
B	-15	HIS	-	EXPRESSION TAG	UNP P0A6B4
B	-14	HIS	-	EXPRESSION TAG	UNP P0A6B4
B	-13	HIS	-	EXPRESSION TAG	UNP P0A6B4
B	-12	HIS	-	EXPRESSION TAG	UNP P0A6B4
B	-11	HIS	-	EXPRESSION TAG	UNP P0A6B4
B	-10	HIS	-	EXPRESSION TAG	UNP P0A6B4
B	-9	SER	-	EXPRESSION TAG	UNP P0A6B4
B	-8	SER	-	EXPRESSION TAG	UNP P0A6B4
B	-7	GLY	-	EXPRESSION TAG	UNP P0A6B4
B	-6	LEU	-	EXPRESSION TAG	UNP P0A6B4
B	-5	VAL	-	EXPRESSION TAG	UNP P0A6B4
B	-4	PRO	-	EXPRESSION TAG	UNP P0A6B4
B	-3	ARG	-	EXPRESSION TAG	UNP P0A6B4
B	-2	GLY	-	EXPRESSION TAG	UNP P0A6B4
B	-1	SER	-	EXPRESSION TAG	UNP P0A6B4
B	0	HIS	-	EXPRESSION TAG	UNP P0A6B4
B	221	LYS	GLU	ENGINEERED	UNP P0A6B4
C	-19	MET	-	EXPRESSION TAG	UNP P0A6B4
C	-18	GLY	-	EXPRESSION TAG	UNP P0A6B4
C	-17	SER	-	EXPRESSION TAG	UNP P0A6B4
C	-16	SER	-	EXPRESSION TAG	UNP P0A6B4
C	-15	HIS	-	EXPRESSION TAG	UNP P0A6B4
C	-14	HIS	-	EXPRESSION TAG	UNP P0A6B4
C	-13	HIS	-	EXPRESSION TAG	UNP P0A6B4
C	-12	HIS	-	EXPRESSION TAG	UNP P0A6B4
C	-11	HIS	-	EXPRESSION TAG	UNP P0A6B4
C	-10	HIS	-	EXPRESSION TAG	UNP P0A6B4
C	-9	SER	-	EXPRESSION TAG	UNP P0A6B4
C	-8	SER	-	EXPRESSION TAG	UNP P0A6B4
C	-7	GLY	-	EXPRESSION TAG	UNP P0A6B4
C	-6	LEU	-	EXPRESSION TAG	UNP P0A6B4
C	-5	VAL	-	EXPRESSION TAG	UNP P0A6B4
C	-4	PRO	-	EXPRESSION TAG	UNP P0A6B4
C	-3	ARG	-	EXPRESSION TAG	UNP P0A6B4
C	-2	GLY	-	EXPRESSION TAG	UNP P0A6B4
C	-1	SER	-	EXPRESSION TAG	UNP P0A6B4
C	0	HIS	-	EXPRESSION TAG	UNP P0A6B4
C	221	LYS	GLU	ENGINEERED	UNP P0A6B4

*Continued on next page...*

Continued from previous page...

Chain	Residue	Modelled	Actual	Comment	Reference
D	-19	MET	-	EXPRESSION TAG	UNP P0A6B4
D	-18	GLY	-	EXPRESSION TAG	UNP P0A6B4
D	-17	SER	-	EXPRESSION TAG	UNP P0A6B4
D	-16	SER	-	EXPRESSION TAG	UNP P0A6B4
D	-15	HIS	-	EXPRESSION TAG	UNP P0A6B4
D	-14	HIS	-	EXPRESSION TAG	UNP P0A6B4
D	-13	HIS	-	EXPRESSION TAG	UNP P0A6B4
D	-12	HIS	-	EXPRESSION TAG	UNP P0A6B4
D	-11	HIS	-	EXPRESSION TAG	UNP P0A6B4
D	-10	HIS	-	EXPRESSION TAG	UNP P0A6B4
D	-9	SER	-	EXPRESSION TAG	UNP P0A6B4
D	-8	SER	-	EXPRESSION TAG	UNP P0A6B4
D	-7	GLY	-	EXPRESSION TAG	UNP P0A6B4
D	-6	LEU	-	EXPRESSION TAG	UNP P0A6B4
D	-5	VAL	-	EXPRESSION TAG	UNP P0A6B4
D	-4	PRO	-	EXPRESSION TAG	UNP P0A6B4
D	-3	ARG	-	EXPRESSION TAG	UNP P0A6B4
D	-2	GLY	-	EXPRESSION TAG	UNP P0A6B4
D	-1	SER	-	EXPRESSION TAG	UNP P0A6B4
D	0	HIS	-	EXPRESSION TAG	UNP P0A6B4
D	221	LYS	GLU	ENGINEERED	UNP P0A6B4

- Molecule 2 is SULFATE ION (three-letter code: SO4) (formula: O<sub>4</sub>S).



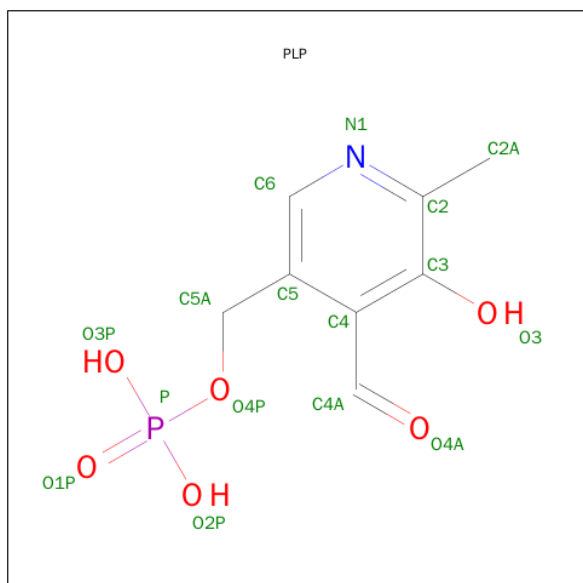
Mol	Chain	Residues	Atoms			ZeroOcc	AltConf
2	A	1	Total	O	S	0	0
			5	4	1		

Continued on next page...

Continued from previous page...

Mol	Chain	Residues	Atoms			ZeroOcc	AltConf
2	A	1	Total	O	S	0	0
			5	4	1		
2	A	1	Total	O	S	0	0
			5	4	1		
2	A	1	Total	O	S	0	0
			5	4	1		
2	B	1	Total	O	S	0	0
			5	4	1		
2	B	1	Total	O	S	0	0
			5	4	1		
2	B	1	Total	O	S	0	0
			5	4	1		
2	B	1	Total	O	S	0	0
			5	4	1		
2	C	1	Total	O	S	0	0
			5	4	1		
2	C	1	Total	O	S	0	0
			5	4	1		
2	C	1	Total	O	S	0	0
			5	4	1		

- Molecule 3 is PYRIDOXAL-5'-PHOSPHATE (three-letter code: PLP) (formula: C<sub>8</sub>H<sub>10</sub>NO<sub>6</sub>P).



Mol	Chain	Residues	Atoms					ZeroOcc	AltConf
3	A	1	Total	C	N	O	P	0	0
			15	8	1	5	1		

Continued on next page...

*Continued from previous page...*

Mol	Chain	Residues	Atoms					ZeroOcc	AltConf
3	B	1	Total	C	N	O	P	0	0
			15	8	1	5	1		
3	C	1	Total	C	N	O	P	0	0
			15	8	1	5	1		
3	D	1	Total	C	N	O	P	0	0
			15	8	1	5	1		

- Molecule 4 is water.

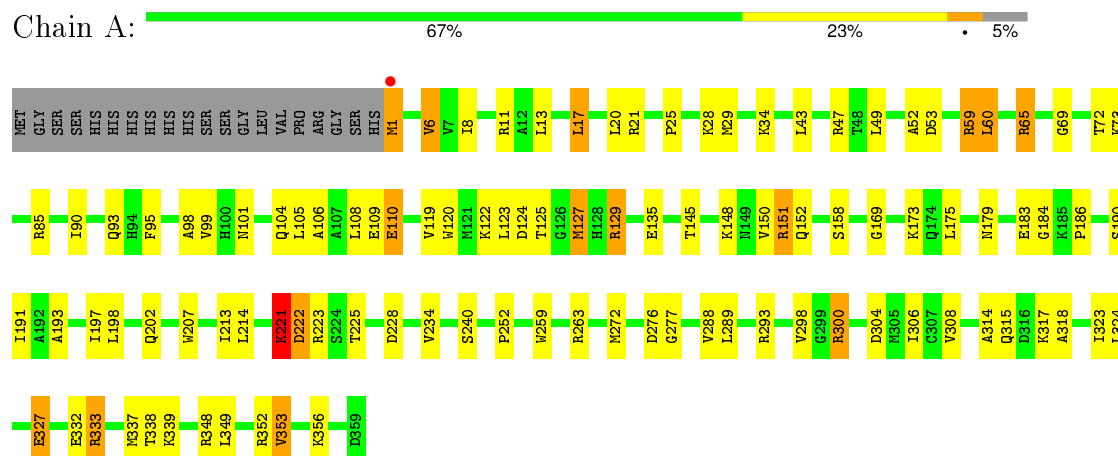
Mol	Chain	Residues	Atoms		ZeroOcc	AltConf
4	A	148	Total	O	0	0
			148	148		
4	B	169	Total	O	0	0
			169	169		
4	C	81	Total	O	0	0
			81	81		
4	D	91	Total	O	0	0
			91	91		



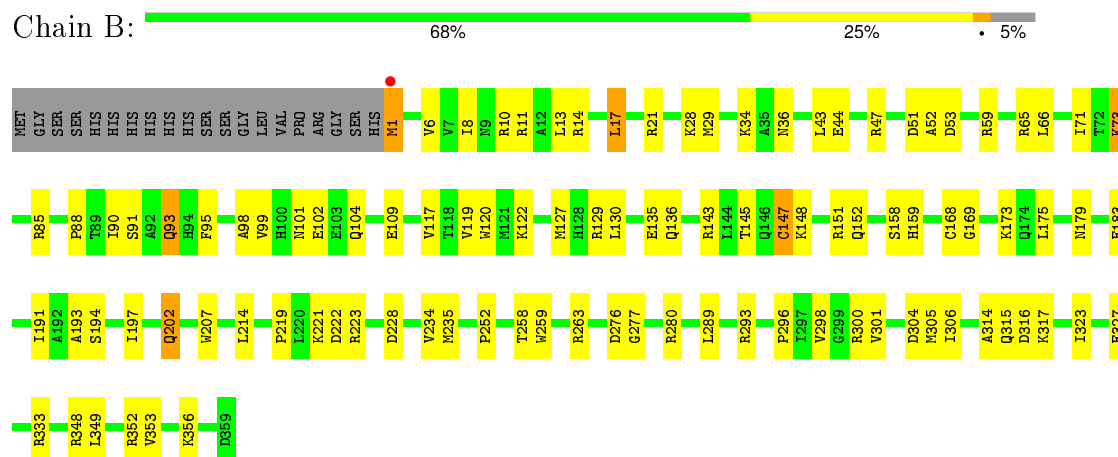
### 3 Residue-property plots

These plots are drawn for all protein, RNA and DNA chains in the entry. The first graphic for a chain summarises the proportions of errors displayed in the second graphic. The second graphic shows the sequence view annotated by issues in geometry and electron density. Residues are color-coded according to the number of geometric quality criteria for which they contain at least one outlier: green = 0, yellow = 1, orange = 2 and red = 3 or more. A red dot above a residue indicates a poor fit to the electron density ( $RSRZ > 2$ ). Stretches of 2 or more consecutive residues without any outlier are shown as a green connector. Residues present in the sample, but not in the model, are shown in grey.

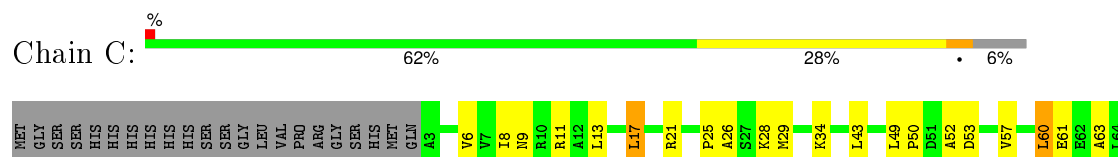
#### • Molecule 1: Alanine racemase

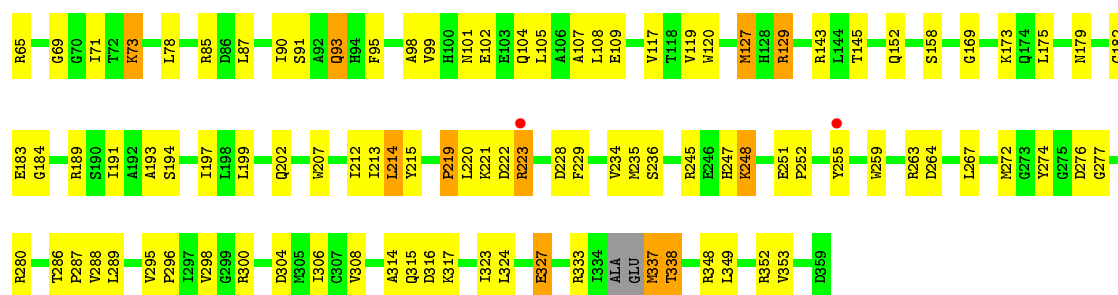


#### • Molecule 1: Alanine racemase

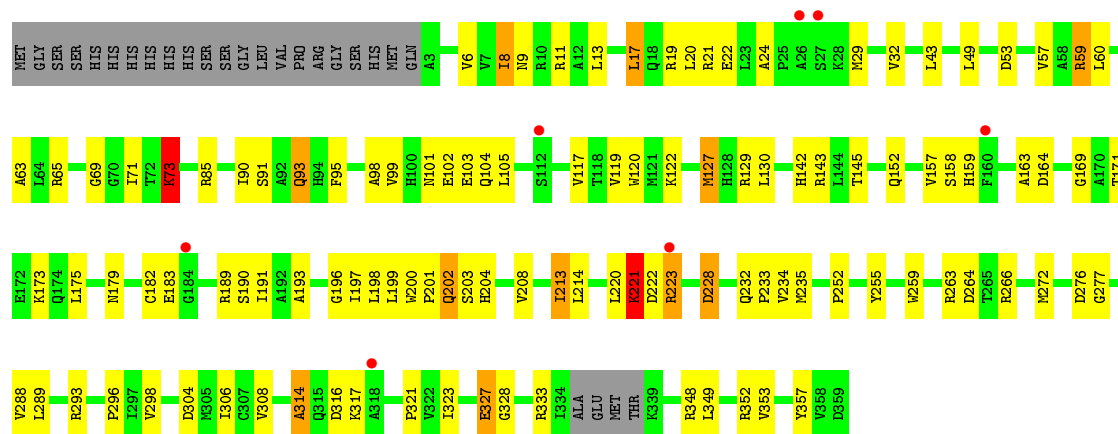


#### • Molecule 1: Alanine racemase





- Molecule 1: Alanine racemase



## 4 Data and refinement statistics

Property	Value	Source
Space group	P 6	Depositor
Cell constants a, b, c, $\alpha$ , $\beta$ , $\gamma$	148.18Å 148.18Å 163.69Å 90.00° 90.00° 120.00°	Depositor
Resolution (Å)	15.00 – 2.60 40.92 – 2.60	Depositor EDS
% Data completeness (in resolution range)	100.0 (15.00-2.60) 99.9 (40.92-2.60)	Depositor EDS
$R_{merge}$	0.14	Depositor
$R_{sym}$	0.14	Depositor
$\langle I/\sigma(I) \rangle$ <sup>1</sup>	4.13 (at 2.61Å)	Xtriage
Refinement program	CNS	Depositor
R, $R_{free}$	0.227 , 0.237 0.222 , 0.230	Depositor DCC
$R_{free}$ test set	5973 reflections (10.61%)	DCC
Wilson B-factor (Å <sup>2</sup> )	19.5	Xtriage
Anisotropy	0.334	Xtriage
Bulk solvent $k_{sol}$ (e/Å <sup>3</sup> ), $B_{sol}$ (Å <sup>2</sup> )	(Not available) , (Not available)	EDS
Estimated twinning fraction	0.479 for h,-h-k,-l	Xtriage
L-test for twinning <sup>2</sup>	$\langle  L  \rangle = 0.49$ , $\langle L^2 \rangle = 0.33$	Xtriage
Outliers	2 of 62523 reflections (0.003%)	Xtriage
$F_o, F_c$ correlation	0.90	EDS
Total number of atoms	11543	wwPDB-VP
Average B, all atoms (Å <sup>2</sup> )	22.0	wwPDB-VP

Xtriage's analysis on translational NCS is as follows: *The largest off-origin peak in the Patterson function is 4.07% of the height of the origin peak. No significant pseudotranslation is detected.*

<sup>1</sup>Intensities estimated from amplitudes.

<sup>2</sup>Theoretical values of  $\langle |L| \rangle$ ,  $\langle L^2 \rangle$  for acentric reflections are 0.5, 0.375 respectively for untwinned datasets, and 0.333, 0.2 for perfectly twinned datasets.

## 5 Model quality

### 5.1 Standard geometry

Bond lengths and bond angles in the following residue types are not validated in this section: PLP, KCX, SO4

The Z score for a bond length (or angle) is the number of standard deviations the observed value is removed from the expected value. A bond length (or angle) with  $|Z| > 5$  is considered an outlier worth inspection. RMSZ is the root-mean-square of all Z scores of the bond lengths (or angles).

Mol	Chain	Bond lengths		Bond angles	
		RMSZ	# Z  >5	RMSZ	# Z  >5
1	A	0.76	0/2799	0.96	14/3799 (0.4%)
1	B	0.70	3/2799 (0.1%)	0.92	8/3799 (0.2%)
1	C	0.54	0/2767	0.95	14/3755 (0.4%)
1	D	0.50	0/2752	0.94	16/3735 (0.4%)
All	All	0.64	3/11117 (0.0%)	0.94	52/15088 (0.3%)

Chiral center outliers are detected by calculating the chiral volume of a chiral center and verifying if the center is modelled as a planar moiety or with the opposite hand. A planarity outlier is detected by checking planarity of atoms in a peptide group, atoms in a mainchain group or atoms of a sidechain that are expected to be planar.

Mol	Chain	#Chirality outliers	#Planarity outliers
1	A	0	2
1	C	0	3
1	D	0	1
All	All	0	6

All (3) bond length outliers are listed below:

Mol	Chain	Res	Type	Atoms	Z	Observed(Å)	Ideal(Å)
1	B	147	CYS	CB-SG	-8.36	1.68	1.82
1	B	109	GLU	CD-OE2	-5.69	1.19	1.25
1	B	314	ALA	CA-CB	-5.24	1.41	1.52

All (52) bond angle outliers are listed below:

Mol	Chain	Res	Type	Atoms	Z	Observed(°)	Ideal(°)
1	A	129	ARG	NE-CZ-NH1	-19.71	110.44	120.30
1	B	85	ARG	NE-CZ-NH1	-19.42	110.59	120.30
1	B	85	ARG	NE-CZ-NH2	18.83	129.71	120.30

*Continued on next page...*

*Continued from previous page...*

Mol	Chain	Res	Type	Atoms	Z	Observed(°)	Ideal(°)
1	A	129	ARG	NE-CZ-NH2	15.29	127.94	120.30
1	D	65	ARG	NE-CZ-NH2	-14.85	112.87	120.30
1	C	65	ARG	NE-CZ-NH2	-14.47	113.06	120.30
1	D	65	ARG	NE-CZ-NH1	14.33	127.47	120.30
1	C	65	ARG	NE-CZ-NH1	13.58	127.09	120.30
1	C	223	ARG	NE-CZ-NH1	12.86	126.73	120.30
1	D	223	ARG	NE-CZ-NH2	12.79	126.69	120.30
1	D	223	ARG	NE-CZ-NH1	-12.46	114.07	120.30
1	C	223	ARG	NE-CZ-NH2	-12.13	114.23	120.30
1	C	315	GLN	N-CA-CB	-10.89	90.99	110.60
1	B	315	GLN	N-CA-CB	-10.46	91.77	110.60
1	B	85	ARG	CD-NE-CZ	10.24	137.94	123.60
1	C	314	ALA	CB-CA-C	-9.14	96.39	110.10
1	A	11	ARG	NE-CZ-NH1	-9.01	115.80	120.30
1	A	85	ARG	NE-CZ-NH1	8.99	124.80	120.30
1	D	85	ARG	NE-CZ-NH2	-8.68	115.96	120.30
1	D	85	ARG	NE-CZ-NH1	8.58	124.59	120.30
1	A	59	ARG	NE-CZ-NH1	8.42	124.51	120.30
1	A	11	ARG	NE-CZ-NH2	8.33	124.46	120.30
1	C	85	ARG	NE-CZ-NH1	8.01	124.30	120.30
1	C	85	ARG	NE-CZ-NH2	-7.89	116.36	120.30
1	A	85	ARG	NE-CZ-NH2	-7.70	116.45	120.30
1	C	65	ARG	CD-NE-CZ	7.57	134.19	123.60
1	D	129	ARG	NE-CZ-NH2	-7.49	116.55	120.30
1	B	129	ARG	NE-CZ-NH2	-7.37	116.61	120.30
1	B	59	ARG	NE-CZ-NH1	7.25	123.92	120.30
1	D	65	ARG	CD-NE-CZ	7.25	133.74	123.60
1	D	314	ALA	N-CA-C	-7.13	91.75	111.00
1	A	59	ARG	NE-CZ-NH2	-7.04	116.78	120.30
1	D	223	ARG	CD-NE-CZ	6.89	133.24	123.60
1	A	129	ARG	CD-NE-CZ	6.67	132.94	123.60
1	D	59	ARG	NE-CZ-NH2	-6.67	116.96	120.30
1	A	315	GLN	N-CA-CB	-6.58	98.77	110.60
1	A	314	ALA	N-CA-C	-6.47	93.53	111.00
1	C	129	ARG	NE-CZ-NH2	-6.46	117.07	120.30
1	D	333	ARG	NE-CZ-NH1	6.35	123.48	120.30
1	C	333	ARG	NE-CZ-NH1	6.08	123.34	120.30
1	D	333	ARG	NE-CZ-NH2	-6.04	117.28	120.30
1	D	314	ALA	CB-CA-C	5.98	119.07	110.10
1	C	223	ARG	CD-NE-CZ	5.95	131.92	123.60
1	C	333	ARG	NE-CZ-NH2	-5.89	117.35	120.30
1	C	314	ALA	N-CA-C	-5.89	95.10	111.00

*Continued on next page...*

*Continued from previous page...*

Mol	Chain	Res	Type	Atoms	Z	Observed(°)	Ideal(°)
1	D	59	ARG	NE-CZ-NH1	5.74	123.17	120.30
1	D	129	ARG	NE-CZ-NH1	5.50	123.05	120.30
1	A	124	ASP	CB-CG-OD1	5.45	123.21	118.30
1	A	6	VAL	CB-CA-C	5.43	121.71	111.40
1	B	129	ARG	NE-CZ-NH1	5.42	123.01	120.30
1	B	59	ARG	NE-CZ-NH2	-5.34	117.63	120.30
1	A	60	LEU	CB-CG-CD2	5.02	119.54	111.00

There are no chirality outliers.

All (6) planarity outliers are listed below:

Mol	Chain	Res	Type	Group
1	A	221	LYS	Peptide
1	A	300	ARG	Sidechain
1	C	219	PRO	Peptide
1	C	221	LYS	Peptide
1	C	60	LEU	Peptide
1	D	221	LYS	Peptide

## 5.2 Too-close contacts ⓘ

In the following table, the Non-H and H(model) columns list the number of non-hydrogen atoms and hydrogen atoms in the chain respectively. The H(added) column lists the number of hydrogen atoms added and optimized by MolProbity. The Clashes column lists the number of clashes within the asymmetric unit, whereas Symm-Clashes lists symmetry related clashes.

Mol	Chain	Non-H	H(model)	H(added)	Clashes	Symm-Clashes
1	A	2754	0	2764	84	0
1	B	2754	0	2765	81	0
1	C	2723	0	2733	107	0
1	D	2708	0	2716	106	0
2	A	20	0	0	5	0
2	B	20	0	0	1	0
2	C	15	0	0	7	0
3	A	15	0	7	0	0
3	B	15	0	7	0	0
3	C	15	0	7	1	0
3	D	15	0	7	2	0
4	A	148	0	0	9	0
4	B	169	0	0	9	0
4	C	81	0	0	6	0

*Continued on next page...*

*Continued from previous page...*

Mol	Chain	Non-H	H(model)	H(added)	Clashes	Symm-Clashes
4	D	91	0	0	23	0
All	All	11543	0	11006	356	0

The all-atom clashscore is defined as the number of clashes found per 1000 atoms (including hydrogen atoms). The all-atom clashscore for this structure is 16.

All (356) close contacts within the same asymmetric unit are listed below, sorted by their clash magnitude.

Atom-1	Atom-2	Interatomic distance (Å)	Clash overlap (Å)
1:B:1:MET:HE1	1:B:356:LYS:HG3	1.29	1.05
1:C:267:LEU:HD12	4:D:1027:HOH:O	1.57	1.02
1:C:127:MET:HG2	4:C:1074:HOH:O	1.60	0.99
2:A:363:SO4:O1	1:B:221:LYS:HE3	1.65	0.96
1:C:215:TYR:HE1	4:C:1034:HOH:O	1.48	0.96
1:D:9:ASN:ND2	1:D:11:ARG:HH21	1.64	0.96
1:D:122:KCX:NZ	1:D:130:LEU:HB2	1.81	0.94
1:B:1:MET:HE1	1:B:356:LYS:CG	1.98	0.93
1:D:189:ARG:HH11	1:D:189:ARG:HB2	1.34	0.92
1:D:321:PRO:HA	4:D:1086:HOH:O	1.70	0.91
1:D:159:HIS:HB2	4:D:1066:HOH:O	1.70	0.91
1:C:189:ARG:HH11	1:C:189:ARG:HB2	1.37	0.89
1:D:9:ASN:HD21	1:D:11:ARG:NH2	1.69	0.89
1:D:9:ASN:HD21	1:D:11:ARG:HH21	0.89	0.88
1:C:255:TYR:CD2	2:C:360:SO4:O3	2.27	0.87
1:A:122:KCX:OQ2	1:A:129:ARG:HD2	1.76	0.86
1:A:6:VAL:CG1	1:A:353:VAL:HG11	2.06	0.85
1:C:255:TYR:CE2	2:C:360:SO4:O3	2.30	0.83
1:B:1:MET:CE	1:B:356:LYS:HE3	2.07	0.83
1:D:19:ARG:HD2	1:D:22:GLU:OE2	1.79	0.82
1:C:213:ILE:HG13	1:C:213:ILE:O	1.79	0.81
1:D:276:ASP:OD1	1:D:352:ARG:HD3	1.83	0.79
1:C:352:ARG:HD3	1:D:59:ARG:NH2	1.98	0.79
1:C:348:ARG:HD2	1:D:348:ARG:HD2	1.63	0.79
1:A:6:VAL:HG13	1:A:353:VAL:CG1	2.13	0.79
1:D:189:ARG:NH1	1:D:189:ARG:HB2	1.97	0.79
1:A:348:ARG:HD2	1:B:348:ARG:HD2	1.64	0.78
1:C:222:ASP:O	1:C:223:ARG:HG3	1.84	0.77
1:C:276:ASP:OD1	1:C:352:ARG:HD3	1.84	0.77
1:B:276:ASP:OD1	1:B:352:ARG:HD3	1.85	0.77
1:C:189:ARG:NH1	1:C:189:ARG:HB2	1.99	0.77
1:D:9:ASN:ND2	1:D:11:ARG:NH2	2.31	0.76

*Continued on next page...*

*Continued from previous page...*

Atom-1	Atom-2	Interatomic distance (Å)	Clash overlap (Å)
1:B:222:ASP:O	1:B:223:ARG:HB2	1.86	0.75
1:C:245:ARG:HD2	4:D:1047:HOH:O	1.86	0.75
1:C:286:THR:HG1	1:C:337:MET:N	1.85	0.74
1:C:129:ARG:HB3	4:C:1074:HOH:O	1.87	0.74
1:A:25:PRO:HG3	1:C:184:GLY:O	1.87	0.74
1:B:1:MET:HE3	1:B:356:LYS:CE	2.18	0.74
2:A:363:SO4:S	1:B:221:LYS:HE3	2.28	0.73
1:A:198:LEU:HD11	1:A:213:ILE:HD12	1.70	0.72
1:A:6:VAL:HG13	1:A:353:VAL:HG11	1.72	0.72
1:B:202:GLN:HE21	1:B:202:GLN:H	1.36	0.71
1:B:1:MET:HE3	1:B:356:LYS:HE3	1.72	0.71
1:C:52:ALA:O	1:C:73:LYS:HD3	1.90	0.70
1:C:255:TYR:HD2	2:C:360:SO4:S	2.15	0.70
1:D:220:LEU:HD21	4:D:1057:HOH:O	1.90	0.70
1:D:189:ARG:HH11	1:D:189:ARG:CB	2.04	0.69
1:C:6:VAL:HG13	1:C:235:MET:HG3	1.74	0.69
2:A:363:SO4:O1	1:B:221:LYS:CE	2.40	0.69
1:C:105:LEU:O	1:C:109:GLU:HG3	1.93	0.68
1:C:247:HIS:NE2	1:C:251:GLU:O	2.25	0.68
1:B:17:LEU:O	1:B:21:ARG:HG3	1.93	0.68
1:C:189:ARG:HH11	1:C:189:ARG:CB	2.06	0.68
1:A:123:LEU:HD23	1:A:125:THR:CG2	2.24	0.68
1:B:1:MET:SD	1:B:356:LYS:HE3	2.34	0.67
1:B:1:MET:CE	1:B:356:LYS:CE	2.72	0.67
1:D:19:ARG:CD	1:D:22:GLU:OE2	2.42	0.67
1:A:17:LEU:O	1:A:21:ARG:HG3	1.95	0.67
1:D:321:PRO:HD3	4:D:1021:HOH:O	1.95	0.66
1:C:222:ASP:O	1:C:223:ARG:CG	2.43	0.66
1:D:199:LEU:HG	4:D:1025:HOH:O	1.95	0.66
1:D:198:LEU:HB2	4:D:1025:HOH:O	1.95	0.66
1:D:198:LEU:HD11	1:D:213:ILE:HD12	1.77	0.66
1:D:208:VAL:HG11	4:D:1067:HOH:O	1.96	0.66
1:B:10:ARG:NH2	1:B:44:GLU:OE1	2.27	0.65
1:C:17:LEU:O	1:C:21:ARG:HG3	1.96	0.65
1:D:145:THR:HG22	1:D:152:GLN:HE22	1.62	0.65
1:C:255:TYR:CD2	2:C:360:SO4:S	2.90	0.65
1:C:50:PRO:O	1:C:73:LYS:HE2	1.96	0.65
1:D:24:ALA:HB2	4:D:1067:HOH:O	1.94	0.65
1:C:6:VAL:HG23	1:C:353:VAL:HG11	1.78	0.65
1:B:280:ARG:NH1	2:B:363:SO4:O1	2.25	0.65
1:C:145:THR:HG22	1:C:152:GLN:HE22	1.61	0.65

*Continued on next page...*



*Continued from previous page...*

Atom-1	Atom-2	Interatomic distance (Å)	Clash overlap (Å)
1:A:225:THR:HA	1:A:332:GLU:OE1	1.97	0.64
1:C:90:ILE:HG23	1:C:95:PHE:HB2	1.79	0.64
1:D:17:LEU:O	1:D:21:ARG:HG3	1.96	0.64
1:D:221:LYS:O	1:D:223:ARG:N	2.23	0.64
1:B:21:ARG:HG2	1:B:29:MET:CE	2.28	0.64
1:A:6:VAL:HG13	1:A:353:VAL:HG13	1.80	0.64
1:C:248:LYS:HD2	1:C:264:ASP:OD2	1.97	0.64
1:C:21:ARG:HG2	1:C:29:MET:CE	2.28	0.64
1:B:10:ARG:NH1	4:B:1017:HOH:O	2.30	0.64
1:C:352:ARG:HD3	1:D:59:ARG:HH22	1.60	0.63
1:B:6:VAL:HG13	1:B:235:MET:HG3	1.79	0.63
1:A:145:THR:HG22	1:A:152:GLN:HE22	1.64	0.62
1:D:21:ARG:HG2	1:D:29:MET:CE	2.29	0.62
1:D:328:GLY:N	4:D:1008:HOH:O	2.32	0.62
1:A:169:GLY:O	1:A:173:LYS:HG3	2.00	0.62
1:D:122:KCX:CX	1:D:130:LEU:HB2	2.29	0.62
1:A:90:ILE:HG23	1:A:95:PHE:HB2	1.82	0.62
1:B:90:ILE:HG23	1:B:95:PHE:HB2	1.81	0.62
1:D:6:VAL:HG13	1:D:235:MET:HG3	1.81	0.61
1:C:255:TYR:CD1	1:D:127:MET:HE3	2.36	0.61
1:D:327:GLU:HB3	4:D:1008:HOH:O	1.99	0.61
1:D:288:VAL:HG11	1:D:308:VAL:HG11	1.83	0.61
1:D:101:ASN:OD1	1:D:104:GLN:HG3	2.01	0.61
1:D:90:ILE:HG23	1:D:95:PHE:HB2	1.82	0.61
1:B:145:THR:HG22	1:B:152:GLN:HE22	1.65	0.60
1:D:321:PRO:CD	4:D:1021:HOH:O	2.49	0.60
1:B:6:VAL:HG23	1:B:353:VAL:HG11	1.83	0.60
1:A:21:ARG:HG2	1:A:29:MET:CE	2.32	0.60
1:A:288:VAL:HG11	1:A:308:VAL:HG11	1.84	0.60
1:B:301:VAL:HG22	1:B:306:ILE:HG12	1.84	0.60
1:D:6:VAL:HG23	1:D:353:VAL:HG11	1.83	0.59
1:D:103:GLU:HG2	4:D:1079:HOH:O	2.02	0.59
1:A:123:LEU:HD23	1:A:125:THR:HG23	1.85	0.59
1:D:272:MET:O	1:D:306:ILE:HG13	2.02	0.59
1:C:287:PRO:HD3	1:C:337:MET:CE	2.33	0.58
1:A:184:GLY:O	1:C:25:PRO:HG3	2.03	0.58
1:D:164:ASP:OD2	1:D:221:LYS:NZ	2.36	0.58
1:C:193:ALA:O	1:C:197:ILE:HG13	2.04	0.58
1:A:327:GLU:HG3	1:A:327:GLU:O	2.02	0.58
1:C:169:GLY:O	1:C:173:LYS:HG3	2.04	0.58
1:C:288:VAL:HG11	1:C:308:VAL:HG11	1.83	0.58

*Continued on next page...*

*Continued from previous page...*

Atom-1	Atom-2	Interatomic distance (Å)	Clash overlap (Å)
1:D:20:LEU:HD21	1:D:213:ILE:HD13	1.84	0.58
1:C:255:TYR:HD2	2:C:360:SO4:O3	1.79	0.58
1:A:93:GLN:HE21	1:A:93:GLN:HA	1.69	0.57
1:D:201:PRO:HD2	1:D:202:GLN:HE21	1.69	0.57
1:C:87:LEU:CD1	1:C:108:LEU:HD23	2.35	0.57
1:A:150:VAL:HG12	1:A:151:ARG:O	2.05	0.57
1:B:101:ASN:OD1	1:B:104:GLN:HG3	2.04	0.57
1:A:20:LEU:HD21	1:A:213:ILE:HD13	1.86	0.57
1:D:142:HIS:CE1	4:D:1007:HOH:O	2.56	0.57
1:C:101:ASN:OD1	1:C:104:GLN:HG3	2.05	0.57
1:C:255:TYR:CD1	1:D:127:MET:CE	2.88	0.56
1:C:220:LEU:HD12	1:C:229:PHE:HZ	1.69	0.56
1:C:272:MET:O	1:C:306:ILE:HG13	2.04	0.56
1:B:122:KCX:NZ	1:B:130:LEU:HB2	2.21	0.56
1:A:65:ARG:HG2	1:A:65:ARG:HH21	1.71	0.56
1:D:266:ARG:NH1	1:D:314:ALA:O	2.39	0.55
1:A:1:MET:CE	1:A:240:SER:HB2	2.36	0.55
1:B:327:GLU:HB2	4:B:1167:HOH:O	2.05	0.55
1:A:101:ASN:OD1	1:A:104:GLN:HG3	2.06	0.55
1:D:158:SER:O	1:D:191:ILE:HA	2.07	0.55
1:A:317:LYS:O	1:A:318:ALA:C	2.44	0.55
1:D:198:LEU:HD21	1:D:213:ILE:HD12	1.89	0.55
1:B:21:ARG:HG2	1:B:29:MET:HE2	1.88	0.55
1:B:52:ALA:O	1:B:73:LYS:CD	2.54	0.55
1:A:221:LYS:CB	4:A:1035:HOH:O	2.54	0.55
1:A:221:LYS:HB2	4:A:1035:HOH:O	2.06	0.55
1:B:1:MET:HE3	1:B:356:LYS:HE2	1.89	0.55
1:A:6:VAL:CG1	1:A:353:VAL:CG1	2.75	0.55
1:D:169:GLY:O	1:D:173:LYS:HG3	2.07	0.55
1:C:93:GLN:HE21	1:C:93:GLN:HA	1.72	0.54
1:D:179:ASN:O	1:D:183:GLU:HG3	2.08	0.54
1:C:182:CYS:HB3	1:C:189:ARG:HD3	1.88	0.54
1:D:21:ARG:NH2	1:D:53:ASP:OD2	2.40	0.54
1:A:193:ALA:O	1:A:197:ILE:HG13	2.08	0.54
1:B:1:MET:CE	1:B:356:LYS:CG	2.81	0.54
1:C:316:ASP:O	1:C:317:LYS:HG2	2.08	0.54
1:B:52:ALA:O	1:B:73:LYS:HD2	2.08	0.54
1:D:13:LEU:HD13	1:D:234:VAL:HG21	1.89	0.54
1:D:8:ILE:HG12	1:D:357:TYR:CE1	2.43	0.54
1:C:87:LEU:HD13	1:C:108:LEU:HD23	1.89	0.53
1:A:348:ARG:HD3	1:B:277:GLY:HA2	1.90	0.53

*Continued on next page...*

*Continued from previous page...*

Atom-1	Atom-2	Interatomic distance (Å)	Clash overlap (Å)
1:D:193:ALA:O	1:D:197:ILE:HG13	2.08	0.53
1:C:21:ARG:HG2	1:C:29:MET:HE2	1.89	0.53
1:C:277:GLY:HA2	1:D:348:ARG:HD3	1.90	0.53
1:A:277:GLY:HA2	1:B:348:ARG:HD3	1.89	0.53
1:B:14:ARG:HD2	4:B:1089:HOH:O	2.07	0.53
1:B:193:ALA:O	1:B:197:ILE:HG13	2.09	0.53
1:C:348:ARG:HD3	1:D:277:GLY:HA2	1.90	0.53
1:C:199:LEU:HD11	1:C:220:LEU:HD21	1.91	0.53
1:C:255:TYR:HE2	2:C:360:SO4:O3	1.87	0.53
1:A:52:ALA:O	1:A:73:LYS:HD3	2.09	0.53
1:D:182:CYS:HB3	1:D:189:ARG:HD3	1.89	0.52
1:A:93:GLN:HE21	1:A:93:GLN:CA	2.20	0.52
1:A:338:THR:O	1:A:339:LYS:HB2	2.08	0.52
1:B:202:GLN:NE2	1:B:202:GLN:H	2.03	0.52
1:C:255:TYR:N	1:D:127:MET:HE3	2.25	0.52
1:C:194:SER:HB3	1:C:219:PRO:HG3	1.91	0.52
1:B:135:GLU:HG2	1:B:136:GLN:OE1	2.09	0.52
1:B:21:ARG:NH2	1:B:53:ASP:OD2	2.43	0.52
1:C:21:ARG:NH2	1:C:53:ASP:OD2	2.43	0.52
1:A:93:GLN:NE2	1:A:93:GLN:HA	2.24	0.52
1:A:198:LEU:HD21	1:A:213:ILE:HD12	1.92	0.52
1:C:289:LEU:HD13	4:C:1061:HOH:O	2.09	0.52
1:C:13:LEU:HD13	1:C:234:VAL:HG21	1.91	0.52
1:D:233:PRO:HB3	4:D:1012:HOH:O	2.10	0.51
1:D:21:ARG:HG2	1:D:29:MET:HE2	1.90	0.51
1:C:43:LEU:CD1	1:C:71:ILE:HD13	2.39	0.51
1:D:252:PRO:HA	1:D:259:TRP:O	2.11	0.51
1:C:78:LEU:HD22	3:C:1001:PLP:H2A3	1.92	0.51
1:C:252:PRO:HA	1:C:259:TRP:O	2.11	0.51
1:B:135:GLU:CD	1:B:135:GLU:H	2.14	0.51
1:B:276:ASP:OD1	1:B:352:ARG:CD	2.56	0.51
1:A:21:ARG:NH2	1:A:53:ASP:OD2	2.44	0.51
1:C:99:VAL:HG23	1:C:119:VAL:HG13	1.91	0.51
1:A:34:LYS:HD2	1:B:304:ASP:OD2	2.11	0.51
1:A:179:ASN:O	1:A:183:GLU:HG3	2.10	0.51
1:B:252:PRO:HA	1:B:259:TRP:O	2.11	0.51
1:C:28:LYS:HD2	1:C:207:TRP:CZ2	2.46	0.51
1:B:28:LYS:HD2	1:B:207:TRP:CZ2	2.46	0.50
1:C:145:THR:HG22	1:C:152:GLN:NE2	2.24	0.50
1:B:179:ASN:O	1:B:183:GLU:HG3	2.11	0.50
1:A:98:ALA:HA	1:A:120:TRP:O	2.11	0.50

*Continued on next page...*

*Continued from previous page...*

Atom-1	Atom-2	Interatomic distance (Å)	Clash overlap (Å)
1:A:252:PRO:HA	1:A:259:TRP:O	2.11	0.50
1:B:169:GLY:O	1:B:173:LYS:HG3	2.11	0.50
1:C:158:SER:O	1:C:191:ILE:HA	2.11	0.50
1:B:93:GLN:HE21	1:B:93:GLN:HA	1.75	0.50
1:C:289:LEU:HB2	1:C:323:ILE:HB	1.94	0.50
1:B:194:SER:HB3	1:B:219:PRO:HG3	1.93	0.50
1:C:9:ASN:OD1	1:C:11:ARG:HB3	2.11	0.50
1:A:106:ALA:O	1:A:110:GLU:HG3	2.12	0.50
1:C:255:TYR:CD2	2:C:360:SO4:O2	2.65	0.50
1:B:17:LEU:CD2	1:B:29:MET:HG2	2.41	0.50
1:C:288:VAL:HG11	1:C:308:VAL:CG1	2.42	0.50
1:A:272:MET:O	1:A:306:ILE:HG13	2.11	0.50
1:C:274:TYR:CD1	1:C:280:ARG:HG3	2.47	0.50
1:D:93:GLN:HE21	1:D:93:GLN:HA	1.77	0.50
1:A:300:ARG:CZ	2:A:363:SO4:O4	2.60	0.49
1:C:337:MET:O	1:C:338:THR:O	2.30	0.49
1:B:258:THR:HG21	1:B:300:ARG:NH1	2.26	0.49
1:C:212:ILE:HG23	1:C:213:ILE:N	2.27	0.49
1:D:276:ASP:OD1	1:D:352:ARG:CD	2.56	0.49
1:D:289:LEU:HB2	1:D:323:ILE:HB	1.94	0.49
1:C:6:VAL:CG1	1:C:8:ILE:HD11	2.42	0.49
1:C:179:ASN:O	1:C:183:GLU:HG3	2.13	0.49
1:C:236:SER:OG	1:C:327:GLU:OE1	2.27	0.49
1:A:21:ARG:HG2	1:A:29:MET:HE2	1.94	0.49
1:D:43:LEU:CD1	1:D:71:ILE:HD13	2.42	0.49
1:B:159:HIS:ND1	4:B:1073:HOH:O	2.33	0.49
1:C:276:ASP:OD1	1:C:352:ARG:CD	2.59	0.48
1:A:198:LEU:HD21	1:A:213:ILE:CD1	2.44	0.48
1:B:98:ALA:HA	1:B:120:TRP:O	2.12	0.48
1:C:98:ALA:HA	1:C:120:TRP:O	2.13	0.48
1:D:200:TRP:HB2	1:D:203:SER:OG	2.13	0.48
1:A:304:ASP:OD2	1:B:34:LYS:HD2	2.13	0.48
1:D:32:VAL:HG21	3:D:1001:PLP:H5A2	1.94	0.48
1:A:300:ARG:NH2	2:A:363:SO4:O4	2.46	0.48
1:A:106:ALA:O	1:A:110:GLU:CG	2.62	0.48
1:A:223:ARG:HG2	4:A:1127:HOH:O	2.13	0.48
1:B:158:SER:O	1:B:191:ILE:HA	2.13	0.48
1:A:52:ALA:O	1:A:73:LYS:CD	2.61	0.48
1:A:158:SER:O	1:A:191:ILE:HA	2.13	0.48
1:A:28:LYS:HD2	1:A:207:TRP:CZ2	2.48	0.48
1:A:122:KCX:OQ1	1:A:129:ARG:NH2	2.45	0.48

*Continued on next page...*

*Continued from previous page...*

Atom-1	Atom-2	Interatomic distance (Å)	Clash overlap (Å)
1:A:122:KCX:CX	1:A:129:ARG:HH21	2.26	0.48
1:B:66:LEU:HD22	1:B:71:ILE:HG13	1.95	0.48
1:C:287:PRO:HD3	1:C:337:MET:HE2	1.95	0.48
1:B:316:ASP:O	1:B:317:LYS:HG2	2.13	0.48
1:D:316:ASP:O	1:D:317:LYS:HG2	2.14	0.48
1:C:255:TYR:CE1	1:D:127:MET:CE	2.97	0.47
1:A:13:LEU:HD13	1:A:234:VAL:HG21	1.94	0.47
1:B:13:LEU:HD13	1:B:234:VAL:HG21	1.95	0.47
1:B:6:VAL:CG1	1:B:8:ILE:HD11	2.45	0.47
1:C:17:LEU:HD12	1:C:49:LEU:HD22	1.96	0.47
1:A:288:VAL:HG11	1:A:308:VAL:CG1	2.44	0.47
1:D:197:ILE:HG23	4:D:1067:HOH:O	2.15	0.47
1:D:105:LEU:HD23	1:D:143:ARG:NH2	2.30	0.47
1:B:289:LEU:HB2	1:B:323:ILE:HB	1.96	0.47
1:D:193:ALA:HB1	3:D:1001:PLP:O4P	2.13	0.47
1:D:102:GLU:OE2	1:D:143:ARG:NH2	2.44	0.47
1:D:304:ASP:OD1	1:D:352:ARG:NH2	2.39	0.47
1:D:321:PRO:CA	4:D:1086:HOH:O	2.45	0.47
1:D:145:THR:HG22	1:D:152:GLN:NE2	2.28	0.46
1:B:99:VAL:HG23	1:B:119:VAL:HG13	1.97	0.46
1:D:19:ARG:O	1:D:22:GLU:HB2	2.15	0.46
1:B:44:GLU:HA	1:B:44:GLU:OE1	2.15	0.46
1:A:186:PRO:HB3	1:C:25:PRO:HB2	1.96	0.46
1:D:201:PRO:HA	1:D:204:HIS:NE2	2.30	0.46
4:A:1086:HOH:O	1:B:36:ASN:HB2	2.16	0.46
1:D:198:LEU:HD21	1:D:213:ILE:CD1	2.46	0.46
1:B:8:ILE:HG23	1:B:234:VAL:HG12	1.97	0.46
1:D:288:VAL:HG11	1:D:308:VAL:CG1	2.43	0.46
1:C:127:MET:CG	4:C:1074:HOH:O	2.39	0.46
1:C:93:GLN:HE21	1:C:93:GLN:CA	2.28	0.46
1:C:255:TYR:CE1	1:D:127:MET:HE1	2.51	0.46
1:A:145:THR:HG22	1:A:152:GLN:NE2	2.29	0.46
1:C:255:TYR:HB3	4:C:1066:HOH:O	2.16	0.45
1:C:8:ILE:HG23	1:C:234:VAL:HG12	1.97	0.45
1:D:213:ILE:O	1:D:213:ILE:HG12	2.17	0.45
1:C:259:TRP:CD2	1:C:298:VAL:HB	2.51	0.45
1:D:264:ASP:CB	4:D:1054:HOH:O	2.63	0.45
1:A:148:LYS:HA	1:A:148:LYS:HD2	1.77	0.45
1:A:65:ARG:HG2	1:A:65:ARG:NH2	2.30	0.45
1:B:327:GLU:CB	4:B:1167:HOH:O	2.62	0.45
1:D:201:PRO:HA	1:D:204:HIS:CE1	2.52	0.45

*Continued on next page...*

*Continued from previous page...*

Atom-1	Atom-2	Interatomic distance (Å)	Clash overlap (Å)
1:A:59:ARG:HD2	4:A:1037:HOH:O	2.15	0.45
1:A:99:VAL:HG23	1:A:119:VAL:HG13	1.98	0.45
1:D:73:LYS:HD3	1:D:73:LYS:HA	1.38	0.45
1:B:102:GLU:OE2	1:B:143:ARG:NH2	2.43	0.45
1:A:222:ASP:N	1:A:222:ASP:OD1	2.35	0.45
1:A:127:MET:HB3	4:A:1044:HOH:O	2.17	0.45
1:D:17:LEU:HD12	1:D:49:LEU:HD22	1.99	0.45
1:B:145:THR:HG22	1:B:152:GLN:NE2	2.30	0.45
1:D:264:ASP:HB3	4:D:1054:HOH:O	2.17	0.45
1:D:228:ASP:HA	4:D:1005:HOH:O	2.16	0.45
1:A:333:ARG:O	1:A:337:MET:HG2	2.17	0.45
1:A:129:ARG:HD3	1:B:305:MET:SD	2.57	0.45
1:B:51:ASP:HB3	4:B:1156:HOH:O	2.15	0.45
1:D:98:ALA:HA	1:D:120:TRP:O	2.16	0.45
1:C:287:PRO:HD3	1:C:337:MET:HE1	1.98	0.45
1:C:93:GLN:NE2	1:C:93:GLN:HA	2.32	0.45
1:C:102:GLU:OE2	1:C:143:ARG:NH2	2.45	0.45
1:B:168:CYS:O	4:B:1102:HOH:O	2.21	0.45
1:D:222:ASP:N	1:D:222:ASP:OD2	2.47	0.44
1:C:43:LEU:HD12	1:C:71:ILE:HD13	1.98	0.44
4:A:1061:HOH:O	1:C:202:GLN:HG2	2.17	0.44
1:C:304:ASP:OD1	1:C:352:ARG:NH2	2.39	0.44
1:A:93:GLN:NE2	1:A:93:GLN:CA	2.80	0.44
1:D:43:LEU:HD12	1:D:71:ILE:HD13	1.99	0.44
1:B:93:GLN:HE21	1:B:93:GLN:CA	2.31	0.44
1:A:289:LEU:HB2	1:A:323:ILE:HB	2.00	0.44
1:C:91:SER:HA	1:C:117:VAL:HG12	1.99	0.44
1:C:127:MET:HE3	1:D:255:TYR:N	2.32	0.44
1:B:43:LEU:O	1:B:47:ARG:HG3	2.17	0.44
1:B:258:THR:HG21	1:B:300:ARG:HH12	1.83	0.44
1:B:88:PRO:HG2	4:B:1093:HOH:O	2.17	0.44
1:D:259:TRP:CD2	1:D:298:VAL:HB	2.53	0.43
1:D:277:GLY:HA3	1:D:349:LEU:HA	2.00	0.43
1:D:99:VAL:HG23	1:D:119:VAL:HG13	2.00	0.43
1:D:163:ALA:N	4:D:1019:HOH:O	2.33	0.43
1:B:277:GLY:HA3	1:B:349:LEU:HA	2.01	0.43
1:C:108:LEU:HA	1:C:108:LEU:HD23	1.71	0.43
1:D:91:SER:HA	1:D:117:VAL:HG12	2.00	0.43
1:C:220:LEU:HD12	1:C:229:PHE:CZ	2.51	0.43
1:A:259:TRP:CD2	1:A:298:VAL:HB	2.53	0.43
1:A:47:ARG:HD3	4:A:1019:HOH:O	2.19	0.43

*Continued on next page...*

*Continued from previous page...*

Atom-1	Atom-2	Interatomic distance (Å)	Clash overlap (Å)
1:A:17:LEU:HD12	1:A:49:LEU:HD22	2.01	0.42
1:A:186:PRO:HA	1:C:26:ALA:HB2	2.01	0.42
1:A:105:LEU:O	1:A:109:GLU:HG3	2.18	0.42
1:B:259:TRP:CD2	1:B:298:VAL:HB	2.54	0.42
1:A:8:ILE:HG23	1:A:234:VAL:HG12	2.01	0.42
1:C:34:LYS:HD2	1:D:304:ASP:OD2	2.20	0.42
1:C:277:GLY:HA3	1:C:349:LEU:HA	2.01	0.42
1:D:43:LEU:HD11	1:D:69:GLY:HA3	2.01	0.42
1:A:324:LEU:HD22	1:A:324:LEU:N	2.35	0.42
1:B:11:ARG:HG2	1:B:11:ARG:O	2.14	0.42
1:D:222:ASP:O	1:D:223:ARG:CG	2.67	0.42
1:C:57:VAL:HG21	1:C:63:ALA:HB2	2.02	0.42
1:A:6:VAL:HG11	1:A:353:VAL:HG11	1.94	0.42
1:D:19:ARG:HA	1:D:22:GLU:OE2	2.19	0.41
1:D:157:VAL:HA	1:D:190:SER:O	2.21	0.41
1:A:43:LEU:HD11	1:A:69:GLY:HA3	2.02	0.41
1:D:130:LEU:HA	4:D:1047:HOH:O	2.20	0.41
1:A:277:GLY:HA3	1:A:349:LEU:HA	2.03	0.41
1:B:51:ASP:CB	4:B:1156:HOH:O	2.67	0.41
1:A:151:ARG:HH21	1:A:151:ARG:HG2	1.86	0.41
1:B:52:ALA:O	1:B:73:LYS:HD3	2.20	0.41
1:D:196:GLY:HA2	1:D:200:TRP:HD1	1.85	0.41
1:B:91:SER:HA	1:B:117:VAL:HG12	2.01	0.41
1:D:171:THR:HG21	1:D:200:TRP:CE2	2.56	0.41
1:C:324:LEU:HD22	1:C:324:LEU:N	2.36	0.41
1:D:11:ARG:NH1	1:D:232:GLN:OE1	2.54	0.41
1:C:43:LEU:HD11	1:C:69:GLY:HA3	2.01	0.41
1:D:57:VAL:HG21	1:D:63:ALA:HB2	2.03	0.41
1:C:104:GLN:O	1:C:107:ALA:HB3	2.20	0.41
1:A:43:LEU:O	1:A:47:ARG:HG3	2.21	0.40
1:A:47:ARG:HD2	4:A:1096:HOH:O	2.21	0.40
1:B:135:GLU:HG2	1:B:136:GLN:CD	2.41	0.40
1:B:93:GLN:HA	1:B:93:GLN:NE2	2.36	0.40
1:A:276:ASP:OD1	1:A:352:ARG:HD3	2.21	0.40
1:C:288:VAL:HG13	1:C:295:VAL:HG23	2.03	0.40
1:C:214:LEU:O	1:C:214:LEU:HD22	2.21	0.40
1:C:43:LEU:HD11	1:C:71:ILE:HD13	2.04	0.40

There are no symmetry-related clashes.

## 5.3 Torsion angles ⓘ

### 5.3.1 Protein backbone ⓘ

In the following table, the Percentiles column shows the percent Ramachandran outliers of the chain as a percentile score with respect to all X-ray entries followed by that with respect to entries of similar resolution.

The Analysed column shows the number of residues for which the backbone conformation was analysed, and the total number of residues.

Mol	Chain	Analysed	Favoured	Allowed	Outliers	Percentiles	
1	A	356/379 (94%)	337 (95%)	19 (5%)	0	100	100
1	B	356/379 (94%)	339 (95%)	17 (5%)	0	100	100
1	C	350/379 (92%)	335 (96%)	13 (4%)	2 (1%)	30	56
1	D	348/379 (92%)	331 (95%)	15 (4%)	2 (1%)	30	56
All	All	1410/1516 (93%)	1342 (95%)	64 (4%)	4 (0%)	46	72

All (4) Ramachandran outliers are listed below:

Mol	Chain	Res	Type
1	C	61	GLU
1	C	338	THR
1	D	73	LYS
1	D	327	GLU

### 5.3.2 Protein sidechains ⓘ

In the following table, the Percentiles column shows the percent sidechain outliers of the chain as a percentile score with respect to all X-ray entries followed by that with respect to entries of similar resolution.

The Analysed column shows the number of residues for which the sidechain conformation was analysed, and the total number of residues.

Mol	Chain	Analysed	Rotameric	Outliers	Percentiles	
1	A	286/303 (94%)	263 (92%)	23 (8%)	15	29
1	B	286/303 (94%)	269 (94%)	17 (6%)	24	47
1	C	283/303 (93%)	269 (95%)	14 (5%)	31	57
1	D	281/303 (93%)	266 (95%)	15 (5%)	28	53
All	All	1136/1212 (94%)	1067 (94%)	69 (6%)	23	46



All (69) residues with a non-rotameric sidechain are listed below:

Mol	Chain	Res	Type
1	A	1	MET
1	A	17	LEU
1	A	60	LEU
1	A	65	ARG
1	A	72	THR
1	A	108	LEU
1	A	110	GLU
1	A	127	MET
1	A	135	GLU
1	A	151	ARG
1	A	175	LEU
1	A	190	SER
1	A	202	GLN
1	A	214	LEU
1	A	221	LYS
1	A	222	ASP
1	A	228	ASP
1	A	263	ARG
1	A	293	ARG
1	A	327	GLU
1	A	333	ARG
1	A	353	VAL
1	A	356	LYS
1	B	1	MET
1	B	17	LEU
1	B	65	ARG
1	B	73	LYS
1	B	93	GLN
1	B	127	MET
1	B	147	CYS
1	B	148	LYS
1	B	151	ARG
1	B	175	LEU
1	B	202	GLN
1	B	214	LEU
1	B	228	ASP
1	B	263	ARG
1	B	293	ARG
1	B	296	PRO
1	B	333	ARG
1	C	17	LEU
1	C	60	LEU

*Continued on next page...*

*Continued from previous page...*

Mol	Chain	Res	Type
1	C	73	LYS
1	C	93	GLN
1	C	127	MET
1	C	175	LEU
1	C	214	LEU
1	C	228	ASP
1	C	248	LYS
1	C	263	ARG
1	C	296	PRO
1	C	300	ARG
1	C	327	GLU
1	C	337	MET
1	D	8	ILE
1	D	17	LEU
1	D	60	LEU
1	D	73	LYS
1	D	93	GLN
1	D	127	MET
1	D	175	LEU
1	D	202	GLN
1	D	213	ILE
1	D	214	LEU
1	D	221	LYS
1	D	228	ASP
1	D	263	ARG
1	D	293	ARG
1	D	296	PRO

Some sidechains can be flipped to improve hydrogen bonding and reduce clashes. All (16) such sidechains are listed below:

Mol	Chain	Res	Type
1	A	93	GLN
1	A	152	GLN
1	B	93	GLN
1	B	152	GLN
1	B	179	ASN
1	B	202	GLN
1	C	93	GLN
1	C	96	HIS
1	C	152	GLN
1	C	179	ASN
1	C	202	GLN

*Continued on next page...*

*Continued from previous page...*

Mol	Chain	Res	Type
1	D	93	GLN
1	D	152	GLN
1	D	179	ASN
1	D	202	GLN
1	D	313	GLN

### 5.3.3 RNA ⓘ

There are no RNA molecules in this entry.

## 5.4 Non-standard residues in protein, DNA, RNA chains ⓘ

4 non-standard protein/DNA/RNA residues are modelled in this entry.

In the following table, the Counts columns list the number of bonds (or angles) for which Mogul statistics could be retrieved, the number of bonds (or angles) that are observed in the model and the number of bonds (or angles) that are defined in the chemical component dictionary. The Link column lists molecule types, if any, to which the group is linked. The Z score for a bond length (or angle) is the number of standard deviations the observed value is removed from the expected value. A bond length (or angle) with  $|Z| > 2$  is considered an outlier worth inspection. RMSZ is the root-mean-square of all Z scores of the bond lengths (or angles).

Mol	Type	Chain	Res	Link	Bond lengths			Bond angles		
					Counts	RMSZ	$\# Z  > 2$	Counts	RMSZ	$\# Z  > 2$
1	KCX	A	122	1	7,11,12	1.86	2 (28%)	7,12,14	5.07	2 (28%)
1	KCX	B	122	1	7,11,12	1.44	2 (28%)	7,12,14	1.21	1 (14%)
1	KCX	C	122	1	7,11,12	1.33	1 (14%)	7,12,14	1.17	0
1	KCX	D	122	1	7,11,12	1.45	1 (14%)	7,12,14	1.49	2 (28%)

In the following table, the Chirals column lists the number of chiral outliers, the number of chiral centers analysed, the number of these observed in the model and the number defined in the chemical component dictionary. Similar counts are reported in the Torsion and Rings columns. '-' means no outliers of that kind were identified.

Mol	Type	Chain	Res	Link	Chirals	Torsions	Rings
1	KCX	A	122	1	-	0/6/10/12	0/0/0/0
1	KCX	B	122	1	-	0/6/10/12	0/0/0/0
1	KCX	C	122	1	-	0/6/10/12	0/0/0/0
1	KCX	D	122	1	-	0/6/10/12	0/0/0/0

All (6) bond length outliers are listed below:

Mol	Chain	Res	Type	Atoms	Z	Observed(Å)	Ideal(Å)
1	B	122	KCX	CB-CA	2.08	1.55	1.53
1	C	122	KCX	CE-NZ	2.55	1.52	1.46
1	B	122	KCX	CE-NZ	2.60	1.52	1.46
1	A	122	KCX	CE-NZ	2.62	1.52	1.46
1	A	122	KCX	CB-CA	3.35	1.57	1.53
1	D	122	KCX	CE-NZ	3.45	1.54	1.46

All (5) bond angle outliers are listed below:

Mol	Chain	Res	Type	Atoms	Z	Observed(°)	Ideal(°)
1	D	122	KCX	CE-NZ-CX	-2.73	120.40	123.49
1	A	122	KCX	O-C-CA	-2.05	120.14	125.49
1	D	122	KCX	CD-CE-NZ	2.23	117.49	111.46
1	B	122	KCX	CE-NZ-CX	2.26	126.06	123.49
1	A	122	KCX	CE-NZ-CX	13.08	138.30	123.49

There are no chirality outliers.

There are no torsion outliers.

There are no ring outliers.

3 monomers are involved in 6 short contacts:

Mol	Chain	Res	Type	Clashes	Symm-Clashes
1	A	122	KCX	3	0
1	B	122	KCX	1	0
1	D	122	KCX	2	0

## 5.5 Carbohydrates [i](#)

There are no carbohydrates in this entry.

## 5.6 Ligand geometry [i](#)

15 ligands are modelled in this entry.

In the following table, the Counts columns list the number of bonds (or angles) for which Mogul statistics could be retrieved, the number of bonds (or angles) that are observed in the model and the number of bonds (or angles) that are defined in the chemical component dictionary. The Link column lists molecule types, if any, to which the group is linked. The Z score for a bond length (or angle) is the number of standard deviations the observed value is removed from the expected value. A bond length (or angle) with  $|Z| > 2$  is considered an outlier worth inspection. RMSZ is the root-mean-square of all Z scores of the bond lengths (or angles).

Mol	Type	Chain	Res	Link	Bond lengths			Bond angles		
					Counts	RMSZ	# Z  > 2	Counts	RMSZ	# Z  > 2
3	PLP	A	1001	1	15,15,16	2.07	6 (40%)	21,22,23	2.88	10 (47%)
2	SO4	A	360	-	4,4,4	0.56	0	6,6,6	0.17	0
2	SO4	A	361	-	4,4,4	0.67	0	6,6,6	0.38	0
2	SO4	A	362	-	4,4,4	1.24	0	6,6,6	0.69	0
2	SO4	A	363	-	4,4,4	0.88	0	6,6,6	0.38	0
3	PLP	B	1001	1	15,15,16	3.34	6 (40%)	21,22,23	2.51	10 (47%)
2	SO4	B	360	-	4,4,4	1.41	1 (25%)	6,6,6	0.82	0
2	SO4	B	361	-	4,4,4	0.21	0	6,6,6	0.68	0
2	SO4	B	362	-	4,4,4	1.36	0	6,6,6	0.70	0
2	SO4	B	363	-	4,4,4	0.90	0	6,6,6	0.16	0
3	PLP	C	1001	1	15,15,16	2.27	5 (33%)	21,22,23	2.64	10 (47%)
2	SO4	C	360	-	4,4,4	0.87	0	6,6,6	0.48	0
2	SO4	C	361	-	4,4,4	2.01	2 (50%)	6,6,6	0.66	0
2	SO4	C	362	-	4,4,4	1.09	0	6,6,6	0.61	0
3	PLP	D	1001	1	15,15,16	2.66	7 (46%)	21,22,23	3.14	12 (57%)

In the following table, the Chirals column lists the number of chiral outliers, the number of chiral centers analysed, the number of these observed in the model and the number defined in the chemical component dictionary. Similar counts are reported in the Torsion and Rings columns. '-' means no outliers of that kind were identified.

Mol	Type	Chain	Res	Link	Chirals	Torsions	Rings
3	PLP	A	1001	1	-	0/6/6/8	0/1/1/1
2	SO4	A	360	-	-	0/0/0/0	0/0/0/0
2	SO4	A	361	-	-	0/0/0/0	0/0/0/0
2	SO4	A	362	-	-	0/0/0/0	0/0/0/0
2	SO4	A	363	-	-	0/0/0/0	0/0/0/0
3	PLP	B	1001	1	-	0/6/6/8	0/1/1/1
2	SO4	B	360	-	-	0/0/0/0	0/0/0/0
2	SO4	B	361	-	-	0/0/0/0	0/0/0/0
2	SO4	B	362	-	-	0/0/0/0	0/0/0/0
2	SO4	B	363	-	-	0/0/0/0	0/0/0/0
3	PLP	C	1001	1	-	0/6/6/8	0/1/1/1
2	SO4	C	360	-	-	0/0/0/0	0/0/0/0
2	SO4	C	361	-	-	0/0/0/0	0/0/0/0
2	SO4	C	362	-	-	0/0/0/0	0/0/0/0
3	PLP	D	1001	1	-	0/6/6/8	0/1/1/1

All (27) bond length outliers are listed below:

Mol	Chain	Res	Type	Atoms	Z	Observed(Å)	Ideal(Å)
3	A	1001	PLP	P-O4P	-4.54	1.45	1.60
3	B	1001	PLP	P-O4P	-3.12	1.49	1.60
2	C	361	SO4	O3-S	-2.32	1.39	1.47
2	B	360	SO4	O1-S	-2.25	1.39	1.47
2	C	361	SO4	O2-S	-2.06	1.40	1.47
3	C	1001	PLP	C2-N1	2.06	1.38	1.34
3	A	1001	PLP	C2-N1	2.10	1.38	1.34
3	A	1001	PLP	C5A-C5	2.26	1.57	1.50
3	C	1001	PLP	C6-N1	2.44	1.39	1.34
3	A	1001	PLP	C6-C5	2.48	1.43	1.37
3	A	1001	PLP	C3-C2	2.51	1.42	1.40
3	B	1001	PLP	C6-C5	2.60	1.43	1.37
3	B	1001	PLP	O3-C3	2.80	1.43	1.37
3	D	1001	PLP	C6-N1	2.83	1.40	1.34
3	A	1001	PLP	O3-C3	2.89	1.43	1.37
3	C	1001	PLP	P-O2P	3.04	1.65	1.54
3	B	1001	PLP	C5-C4	3.26	1.44	1.40
3	D	1001	PLP	C5-C4	3.45	1.44	1.40
3	B	1001	PLP	C2-N1	3.47	1.41	1.34
3	D	1001	PLP	C6-C5	3.74	1.45	1.37
3	D	1001	PLP	P-O3P	3.78	1.68	1.54
3	D	1001	PLP	C2-N1	3.79	1.42	1.34
3	D	1001	PLP	C3-C2	3.81	1.43	1.40
3	C	1001	PLP	P-O1P	3.86	1.63	1.51
3	D	1001	PLP	P-O1P	4.52	1.66	1.51
3	C	1001	PLP	C3-C2	4.62	1.44	1.40
3	B	1001	PLP	C3-C2	10.49	1.48	1.40

All (42) bond angle outliers are listed below:

Mol	Chain	Res	Type	Atoms	Z	Observed(°)	Ideal(°)
3	D	1001	PLP	O2P-P-O4P	-5.64	90.33	106.56
3	A	1001	PLP	C4A-C4-C5	-4.63	116.06	120.88
3	D	1001	PLP	C4A-C4-C5	-4.16	116.55	120.88
3	A	1001	PLP	C5-C6-N1	-4.16	116.65	123.86
3	D	1001	PLP	C5-C6-N1	-4.11	116.72	123.86
3	B	1001	PLP	C5A-C5-C6	-4.00	111.72	119.28
3	B	1001	PLP	C4A-C4-C5	-3.86	116.86	120.88
3	C	1001	PLP	C3-C2-N1	-3.72	115.48	120.61
3	C	1001	PLP	C5-C6-N1	-3.59	117.63	123.86
3	D	1001	PLP	C5A-C5-C6	-3.48	112.71	119.28
3	C	1001	PLP	O3P-P-O1P	-3.43	99.54	110.58
3	C	1001	PLP	C5A-C5-C6	-3.41	112.83	119.28

*Continued on next page...*

*Continued from previous page...*

Mol	Chain	Res	Type	Atoms	Z	Observed(°)	Ideal(°)
3	B	1001	PLP	C5-C6-N1	-3.17	118.35	123.86
3	C	1001	PLP	C4A-C4-C3	-2.95	115.01	120.36
3	D	1001	PLP	O3-C3-C2	-2.75	112.88	117.66
3	D	1001	PLP	C3-C2-N1	-2.57	117.06	120.61
3	A	1001	PLP	C3-C2-N1	-2.46	117.21	120.61
3	A	1001	PLP	O2P-P-O4P	-2.22	100.17	106.56
3	B	1001	PLP	C3-C2-N1	-2.20	117.58	120.61
3	A	1001	PLP	C5A-C5-C6	-2.07	115.37	119.28
3	C	1001	PLP	O4P-P-O1P	2.00	112.24	107.14
3	D	1001	PLP	O3-C3-C4	2.26	124.48	118.12
3	D	1001	PLP	C2A-C2-C3	2.54	124.11	121.04
3	B	1001	PLP	O3-C3-C4	2.58	125.39	118.12
3	B	1001	PLP	O4P-C5A-C5	2.66	113.39	108.99
3	B	1001	PLP	O3P-P-O4P	2.75	114.48	106.56
3	B	1001	PLP	C6-N1-C2	2.82	125.02	119.28
3	C	1001	PLP	O3P-P-O2P	3.02	118.87	107.38
3	A	1001	PLP	O3-C3-C4	3.04	126.66	118.12
3	D	1001	PLP	C6-N1-C2	3.04	125.47	119.28
3	B	1001	PLP	C3-C4-C5	3.43	122.52	118.78
3	C	1001	PLP	C3-C4-C5	3.63	122.74	118.78
3	A	1001	PLP	C5A-C5-C4	3.79	126.67	121.65
3	C	1001	PLP	C6-N1-C2	3.79	127.01	119.28
3	A	1001	PLP	C6-N1-C2	4.04	127.52	119.28
3	D	1001	PLP	O4P-C5A-C5	4.28	116.07	108.99
3	D	1001	PLP	C5A-C5-C4	4.49	127.59	121.65
3	A	1001	PLP	C3-C4-C5	4.79	124.01	118.78
3	C	1001	PLP	C5A-C5-C4	5.77	129.30	121.65
3	B	1001	PLP	C5A-C5-C4	5.86	129.41	121.65
3	D	1001	PLP	O3P-P-O4P	6.36	124.87	106.56
3	A	1001	PLP	O4P-C5A-C5	6.58	119.87	108.99

There are no chirality outliers.

There are no torsion outliers.

There are no ring outliers.

5 monomers are involved in 16 short contacts:

Mol	Chain	Res	Type	Clashes	Symm-Clashes
2	A	363	SO4	5	0
2	B	363	SO4	1	0
3	C	1001	PLP	1	0
2	C	360	SO4	7	0

*Continued on next page...*

*Continued from previous page...*

Mol	Chain	Res	Type	Clashes	Symm-Clashes
3	D	1001	PLP	2	0

## 5.7 Other polymers [i](#)

There are no such residues in this entry.

## 5.8 Polymer linkage issues [i](#)

There are no chain breaks in this entry.



## 6 Fit of model and data ⓘ

### 6.1 Protein, DNA and RNA chains ⓘ

In the following table, the column labelled ‘#RSRZ> 2’ contains the number (and percentage) of RSRZ outliers, followed by percent RSRZ outliers for the chain as percentile scores relative to all X-ray entries and entries of similar resolution. The OWAB column contains the minimum, median, 95<sup>th</sup> percentile and maximum values of the occupancy-weighted average B-factor per residue. The column labelled ‘Q< 0.9’ lists the number of (and percentage) of residues with an average occupancy less than 0.9.

Mol	Chain	Analysed	<RSRZ>	#RSRZ>2	OWAB(Å <sup>2</sup> )	Q<0.9
1	A	358/379 (94%)	-0.43	1 (0%) 94 93	3, 12, 25, 38	0
1	B	358/379 (94%)	-0.37	1 (0%) 94 93	2, 13, 26, 49	0
1	C	354/379 (93%)	0.08	2 (0%) 90 88	16, 29, 40, 47	0
1	D	352/379 (92%)	0.32	7 (1%) 68 63	17, 32, 44, 53	0
All	All	1422/1516 (93%)	-0.10	11 (0%) 87 85	2, 22, 40, 53	0

All (11) RSRZ outliers are listed below:

Mol	Chain	Res	Type	RSRZ
1	D	223	ARG	4.6
1	D	318	ALA	3.1
1	C	255	TYR	2.9
1	C	223	ARG	2.4
1	B	1	MET	2.3
1	D	27	SER	2.3
1	D	112	SER	2.2
1	D	26	ALA	2.2
1	A	1	MET	2.1
1	D	160	PHE	2.1
1	D	184	GLY	2.1

### 6.2 Non-standard residues in protein, DNA, RNA chains ⓘ

In the following table, the Atoms column lists the number of modelled atoms in the group and the number defined in the chemical component dictionary. LLDF column lists the quality of electron density of the group with respect to its neighbouring residues in protein, DNA or RNA chains. The B-factors column lists the minimum, median, 95<sup>th</sup> percentile and maximum values of B factors of atoms in the group. The column labelled ‘Q< 0.9’ lists the number of atoms with occupancy less than 0.9.

Mol	Type	Chain	Res	Atoms	RSCC	RSR	LLDF	B-factors( $\text{\AA}^2$ )	Q<0.9
1	KCX	A	122	12/13	0.94	0.16	-	5,12,15,15	0
1	KCX	B	122	12/13	0.91	0.16	-	8,12,19,19	0
1	KCX	C	122	12/13	0.91	0.16	-	26,28,29,30	0
1	KCX	D	122	12/13	0.86	0.23	-	32,35,38,38	0

### 6.3 Carbohydrates [i](#)

There are no carbohydrates in this entry.

### 6.4 Ligands [i](#)

In the following table, the Atoms column lists the number of modelled atoms in the group and the number defined in the chemical component dictionary. LLDF column lists the quality of electron density of the group with respect to its neighbouring residues in protein, DNA or RNA chains. The B-factors column lists the minimum, median, 95<sup>th</sup> percentile and maximum values of B factors of atoms in the group. The column labelled 'Q< 0.9' lists the number of atoms with occupancy less than 0.9.

Mol	Type	Chain	Res	Atoms	RSCC	RSR	LLDF	B-factors( $\text{\AA}^2$ )	Q<0.9
2	SO4	B	360	5/5	0.86	0.34	6.25	68,69,70,70	0
2	SO4	A	360	5/5	0.82	0.29	5.15	73,74,74,75	0
2	SO4	C	360	5/5	0.86	0.37	2.67	79,79,79,80	0
2	SO4	A	361	5/5	0.89	0.21	1.45	52,53,53,54	0
3	PLP	D	1001	15/16	0.93	0.20	0.13	30,37,39,39	0
3	PLP	C	1001	15/16	0.95	0.16	-0.19	33,35,36,37	0
3	PLP	B	1001	15/16	0.96	0.13	-0.23	4,9,12,12	0
3	PLP	A	1001	15/16	0.97	0.14	-0.25	12,16,18,18	0
2	SO4	B	361	5/5	0.98	0.12	-1.34	26,27,28,29	0
2	SO4	B	363	5/5	0.94	0.18	-	61,62,62,63	0
2	SO4	A	363	5/5	0.91	0.20	-	62,62,63,64	0
2	SO4	B	362	5/5	0.89	0.20	-	72,73,74,74	0
2	SO4	C	362	5/5	0.94	0.17	-	79,80,80,81	0
2	SO4	C	361	5/5	0.98	0.14	-	40,40,41,41	0
2	SO4	A	362	5/5	0.89	0.34	-	90,91,91,91	0

### 6.5 Other polymers [i](#)

There are no such residues in this entry.