



# Full wwPDB X-ray Structure Validation Report ⓘ

Jan 31, 2016 – 06:33 PM GMT

PDB ID : 1BB0  
Title : THROMBIN INHIBITORS WITH RIGID TRIPEPTIDYL ALDEHYDES  
Authors : Krishnan, R.; Zhang, E.; Hakansson, K.; Arni, R.K.; Tulinsky, A.; Lim-Wilby, M.S.L.; Levy, O.E.; Semple, J.E.; Brunck, T.K.  
Deposited on : 1998-04-28  
Resolution : 2.10 Å(reported)

This is a Full wwPDB X-ray Structure Validation Report for a publicly released PDB entry.  
We welcome your comments at [validation@mail.wwpdb.org](mailto:validation@mail.wwpdb.org)  
A user guide is available at  
<http://wwpdb.org/validation/2016/XrayValidationReportHelp>  
with specific help available everywhere you see the ⓘ symbol.

---

The following versions of software and data (see [references ⓘ](#)) were used in the production of this report:

MolProbity : 4.02b-467  
Mogul : 1.7 (RC4), CSD as536be (2015)  
Xtriage (Phenix) : **NOT EXECUTED**  
EDS : **NOT EXECUTED**  
Percentile statistics : 20151230.v01 (using entries in the PDB archive December 30th 2015)  
Ideal geometry (proteins) : Engh & Huber (2001)  
Ideal geometry (DNA, RNA) : Parkinson et al. (1996)  
Validation Pipeline (wwPDB-VP) : trunk26865

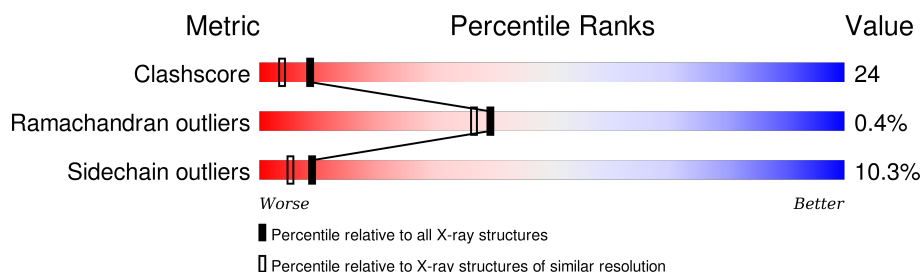
# 1 Overall quality at a glance

The following experimental techniques were used to determine the structure:

*X-RAY DIFFRACTION*

The reported resolution of this entry is 2.10 Å.

Percentile scores (ranging between 0-100) for global validation metrics of the entry are shown in the following graphic. The table shows the number of entries on which the scores are based.



Metric	Whole archive (#Entries)	Similar resolution (#Entries, resolution range(Å))
Clashscore	102246	4460 (2.10-2.10)
Ramachandran outliers	100387	4413 (2.10-2.10)
Sidechain outliers	100360	4414 (2.10-2.10)

The table below summarises the geometric issues observed across the polymeric chains and their fit to the electron density. The red, orange, yellow and green segments on the lower bar indicate the fraction of residues that contain outliers for  $\geq 3$ , 2, 1 and 0 types of geometric quality criteria. A grey segment represents the fraction of residues that are not modelled. The numeric value for each fraction is indicated below the corresponding segment, with a dot representing fractions  $\leq 5\%$ . The upper red bar (where present) indicates the fraction of residues that have poor fit to the electron density. The numeric value is given above the bar.

Note EDS was not executed.

Mol	Chain	Length	Quality of chain
1	A	36	
2	B	259	
3	C	13	

## 2 Entry composition

There are 6 unique types of molecules in this entry. The entry contains 2412 atoms, of which 0 are hydrogens and 0 are deuteriums.

In the tables below, the ZeroOcc column contains the number of atoms modelled with zero occupancy, the AltConf column contains the number of residues with at least one atom in alternate conformation and the Trace column contains the number of residues modelled with at most 2 atoms.

- Molecule 1 is a protein called THROMBIN.

Mol	Chain	Residues	Atoms					ZeroOcc	AltConf	Trace
1	A	26	Total	C	N	O	S	0	0	0
			208	131	32	44	1			

- Molecule 2 is a protein called THROMBIN.

Mol	Chain	Residues	Atoms					ZeroOcc	AltConf	Trace
2	B	249	Total	C	N	O	S	0	0	0
			1970	1261	349	347	13			

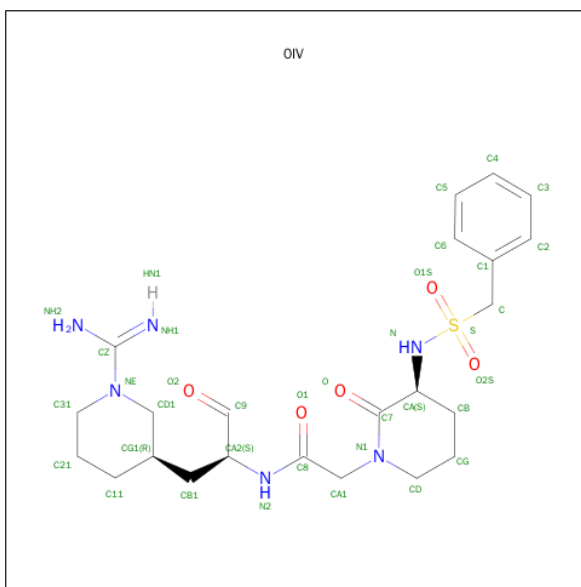
- Molecule 3 is a protein called HIRUGEN.

Mol	Chain	Residues	Atoms					ZeroOcc	AltConf	Trace
3	C	8	Total	C	N	O	S	0	0	0
			63	40	8	14	1			

- Molecule 4 is SODIUM ION (three-letter code: NA) (formula: Na).

Mol	Chain	Residues	Atoms		ZeroOcc	AltConf
4	B	2	Total	Na	0	0
			2	2		

- Molecule 5 is 2-{(3S)-3-[(BENZYL SULFONYL)AMINO]-2-OXOPIPERIDIN-1-YL}-N-{(2S)-1-[(3R)-1-CARBAMIMIDOYLPYPERIDIN-3-YL]-3-OXOPROPAN-2-YL}ACETAMIDE (three-letter code: 0IV) (formula: C<sub>23</sub>H<sub>34</sub>N<sub>6</sub>O<sub>5</sub>S).



Mol	Chain	Residues	Atoms					ZeroOcc	AltConf
5	B	1	Total	C	N	O	S	0	0
			35	23	6	5	1		

- Molecule 6 is water.

Mol	Chain	Residues	Atoms	ZeroOcc	AltConf
6	A	8	Total O 8 8	0	0
6	B	121	Total O 121 121	0	0
6	C	5	Total O 5 5	0	0

### 3 Residue-property plots [i](#)

These plots are drawn for all protein, RNA and DNA chains in the entry. The first graphic for a chain summarises the proportions of errors displayed in the second graphic. The second graphic shows the sequence view annotated by issues in geometry and electron density. Residues are color-coded according to the number of geometric quality criteria for which they contain at least one outlier: green = 0, yellow = 1, orange = 2 and red = 3 or more. A red dot above a residue indicates a poor fit to the electron density ( $RSRZ > 2$ ). Stretches of 2 or more consecutive residues without any outlier are shown as a green connector. Residues present in the sample, but not in the model, are shown in grey.

Note EDS was not executed.

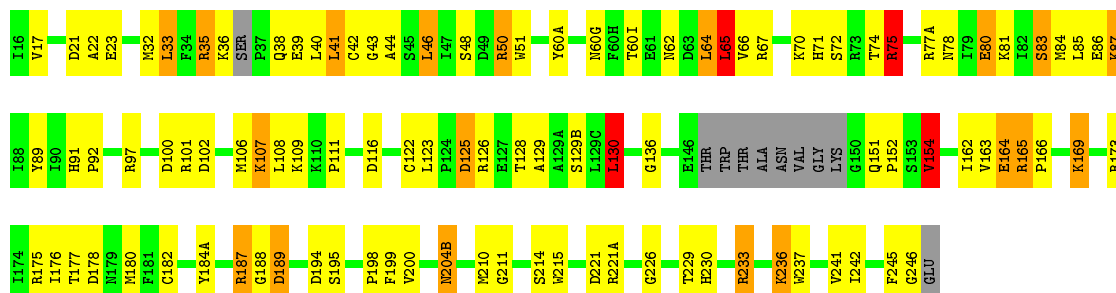
#### • Molecule 1: THROMBIN

Chain A: 

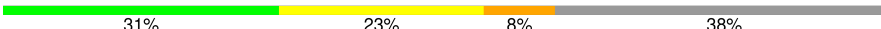


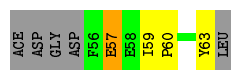
#### • Molecule 2: THROMBIN

Chain B: 



#### • Molecule 3: HIRUGEN

Chain C: 



## 4 Data and refinement statistics

Xtriage (Phenix) and EDS were not executed - this section will therefore be incomplete.

Property	Value	Source
Space group	C 1 2 1	Depositor
Cell constants a, b, c, $\alpha$ , $\beta$ , $\gamma$	71.14Å 72.26Å 72.73Å 90.00° 100.70° 90.00°	Depositor
Resolution (Å)	7.00 – 2.10	Depositor
% Data completeness (in resolution range)	75.0 (7.00-2.10)	Depositor
$R_{merge}$	0.06	Depositor
$R_{sym}$	0.12	Depositor
Refinement program	PROLSQ, X-PLOR	Depositor
R, $R_{free}$	0.157 , (Not available)	Depositor
Estimated twinning fraction	No twinning to report.	Xtriage
Total number of atoms	2412	wwPDB-VP
Average B, all atoms (Å <sup>2</sup> )	29.0	wwPDB-VP

## 5 Model quality

### 5.1 Standard geometry

Bond lengths and bond angles in the following residue types are not validated in this section: NA, OIV, TYS

The Z score for a bond length (or angle) is the number of standard deviations the observed value is removed from the expected value. A bond length (or angle) with  $|Z| > 5$  is considered an outlier worth inspection. RMSZ is the root-mean-square of all Z scores of the bond lengths (or angles).

Mol	Chain	Bond lengths		Bond angles	
		RMSZ	# Z  >5	RMSZ	# Z  >5
1	A	0.83	0/210	1.80	5/280 (1.8%)
2	B	0.75	0/2020	1.72	37/2731 (1.4%)
3	C	0.73	0/48	1.58	2/63 (3.2%)
All	All	0.76	0/2278	1.73	44/3074 (1.4%)

Chiral center outliers are detected by calculating the chiral volume of a chiral center and verifying if the center is modelled as a planar moiety or with the opposite hand. A planarity outlier is detected by checking planarity of atoms in a peptide group, atoms in a mainchain group or atoms of a sidechain that are expected to be planar.

Mol	Chain	#Chirality outliers	#Planarity outliers
1	A	0	1
2	B	0	1
All	All	0	2

There are no bond length outliers.

All (44) bond angle outliers are listed below:

Mol	Chain	Res	Type	Atoms	Z	Observed(°)	Ideal(°)
2	B	233	ARG	NE-CZ-NH1	15.12	127.86	120.30
2	B	97	ARG	NE-CZ-NH2	-14.18	113.21	120.30
2	B	101	ARG	NE-CZ-NH1	11.00	125.80	120.30
2	B	35	ARG	NE-CZ-NH2	-8.74	115.93	120.30
2	B	101	ARG	NE-CZ-NH2	-8.37	116.12	120.30
2	B	221(A)	ARG	NE-CZ-NH2	7.67	124.13	120.30
2	B	125	ASP	CB-CG-OD1	7.51	125.06	118.30
2	B	67	ARG	NE-CZ-NH1	7.44	124.02	120.30
2	B	221(A)	ARG	NE-CZ-NH1	-7.39	116.61	120.30
2	B	189	ASP	CB-CG-OD2	7.22	124.80	118.30
1	A	4	ARG	NE-CZ-NH2	7.13	123.86	120.30

*Continued on next page...*

*Continued from previous page...*

Mol	Chain	Res	Type	Atoms	Z	Observed(°)	Ideal(°)
2	B	165	ARG	CD-NE-CZ	7.05	133.47	123.60
2	B	60(A)	TYR	CB-CG-CD1	-6.79	116.93	121.00
2	B	75	ARG	CD-NE-CZ	6.50	132.69	123.60
2	B	233	ARG	CD-NE-CZ	6.31	132.43	123.60
2	B	184(A)	TYR	CB-CG-CD1	-6.30	117.22	121.00
2	B	175	ARG	C-N-CA	6.15	137.07	121.70
2	B	164	GLU	OE1-CD-OE2	-6.03	116.06	123.30
1	A	14	ASP	CB-CG-OD2	-5.97	112.92	118.30
3	C	57	GLU	OE1-CD-OE2	5.94	130.43	123.30
2	B	80	GLU	CG-CD-OE2	-5.90	106.50	118.30
2	B	100	ASP	CB-CG-OD2	-5.87	113.02	118.30
1	A	14(C)	GLU	CG-CD-OE1	-5.80	106.71	118.30
2	B	154	VAL	N-CA-CB	-5.80	98.75	111.50
2	B	97	ARG	NH1-CZ-NH2	5.79	125.76	119.40
2	B	23	GLU	OE1-CD-OE2	5.72	130.17	123.30
2	B	176	ILE	CA-CB-CG2	5.71	122.33	110.90
2	B	42	CYS	CA-CB-SG	5.69	124.25	114.00
1	A	1(A)	ASP	CB-CG-OD1	-5.64	113.22	118.30
2	B	44	ALA	CB-CA-C	5.58	118.46	110.10
2	B	21	ASP	CB-CG-OD1	5.55	123.30	118.30
2	B	130	LEU	CB-CA-C	5.54	120.74	110.20
2	B	83	SER	N-CA-CB	5.48	118.72	110.50
2	B	194	ASP	CB-CG-OD1	-5.45	113.39	118.30
2	B	187	ARG	NE-CZ-NH1	-5.45	117.57	120.30
2	B	164	GLU	CG-CD-OE2	5.28	128.85	118.30
1	A	4	ARG	NH1-CZ-NH2	-5.19	113.69	119.40
2	B	180	MET	O-C-N	5.18	130.99	122.70
2	B	226	GLY	O-C-N	5.13	130.91	122.70
3	C	57	GLU	CG-CD-OE2	-5.13	108.04	118.30
2	B	116	ASP	CB-CG-OD1	5.12	122.91	118.30
2	B	173	ARG	N-CA-CB	5.11	119.79	110.60
2	B	169	LYS	CA-CB-CG	5.10	124.62	113.40
2	B	65	LEU	O-C-N	5.05	130.78	122.70

There are no chirality outliers.

All (2) planarity outliers are listed below:

Mol	Chain	Res	Type	Group
1	A	5	PRO	Mainchain
2	B	122	CYS	Mainchain



## 5.2 Too-close contacts ⓘ

In the following table, the Non-H and H(model) columns list the number of non-hydrogen atoms and hydrogen atoms in the chain respectively. The H(added) column lists the number of hydrogen atoms added and optimized by MolProbity. The Clashes column lists the number of clashes within the asymmetric unit, whereas Symm-Clashes lists symmetry related clashes.

Mol	Chain	Non-H	H(model)	H(added)	Clashes	Symm-Clashes
1	A	208	0	203	2	0
2	B	1970	0	1922	99	0
3	C	63	0	43	8	0
4	B	2	0	0	0	0
5	B	35	0	33	4	0
6	A	8	0	0	1	0
6	B	121	0	0	8	0
6	C	5	0	0	2	0
All	All	2412	0	2201	106	0

The all-atom clashscore is defined as the number of clashes found per 1000 atoms (including hydrogen atoms). The all-atom clashscore for this structure is 24.

All (106) close contacts within the same asymmetric unit are listed below, sorted by their clash magnitude.

Atom-1	Atom-2	Interatomic distance (Å)	Clash overlap (Å)
2:B:236:LYS:HE3	2:B:236:LYS:H	1.08	1.15
2:B:195:SER:OG	5:B:1:0IV:C9	1.94	1.14
2:B:75:ARG:NH1	2:B:75:ARG:HA	1.64	1.11
2:B:195:SER:HG	5:B:1:0IV:C9	1.62	1.09
2:B:236:LYS:N	2:B:236:LYS:HE3	1.80	0.95
2:B:43:GLY:HA3	6:B:564:HOH:O	1.66	0.94
2:B:236:LYS:CE	2:B:236:LYS:H	1.82	0.92
3:C:60:PRO:HG2	3:C:63:TYS:HE2	1.53	0.89
2:B:72:SER:OG	2:B:75:ARG:HG2	1.76	0.85
2:B:77(A):ARG:O	6:B:499:HOH:O	1.95	0.83
2:B:75:ARG:CA	2:B:75:ARG:NH1	2.41	0.83
2:B:74:THR:O	6:B:450:HOH:O	1.97	0.81
2:B:151:GLN:NE2	6:B:557:HOH:O	2.16	0.78
2:B:71:HIS:CD2	2:B:154:VAL:HG22	2.21	0.76
2:B:178:ASP:HB3	2:B:233:ARG:HH11	1.51	0.75
2:B:86:GLU:HB3	2:B:107:LYS:HG3	1.73	0.69
2:B:75:ARG:HH12	3:C:57:GLU:CB	2.07	0.67
2:B:85:LEU:HD13	2:B:106:MET:HE2	1.76	0.66
3:C:59:ILE:HG23	6:C:537:HOH:O	1.95	0.66

*Continued on next page...*

*Continued from previous page...*

Atom-1	Atom-2	Interatomic distance (Å)	Clash overlap (Å)
2:B:178:ASP:CB	2:B:233:ARG:HH11	2.07	0.66
2:B:80:GLU:O	2:B:81:LYS:HD3	1.95	0.65
2:B:75:ARG:HB3	2:B:75:ARG:HH11	1.60	0.65
2:B:75:ARG:NH1	3:C:57:GLU:OE1	2.30	0.65
2:B:35:ARG:HB2	2:B:41:LEU:HD13	1.78	0.64
2:B:242:ILE:O	2:B:246:GLY:N	2.29	0.64
2:B:109:LYS:HB3	6:B:572:HOH:O	1.99	0.63
2:B:187:ARG:NE	2:B:221:ASP:OD2	2.32	0.63
2:B:165:ARG:NH2	2:B:177:THR:O	2.32	0.63
2:B:46:LEU:HD22	2:B:48:SER:O	1.99	0.63
2:B:75:ARG:HH11	2:B:75:ARG:CB	2.13	0.61
2:B:215:TRP:CE3	5:B:1:0IV:H2	2.35	0.61
2:B:72:SER:OG	2:B:75:ARG:CG	2.49	0.60
2:B:50:ARG:NH1	2:B:108:LEU:O	2.34	0.60
2:B:164:GLU:H	2:B:164:GLU:CD	2.03	0.60
2:B:50:ARG:HH11	2:B:107:LYS:HE2	1.65	0.59
2:B:236:LYS:HG2	2:B:237:TRP:H	1.67	0.59
2:B:130:LEU:CD2	2:B:162:ILE:HD13	2.33	0.59
2:B:77(A):ARG:O	2:B:78:ASN:HB2	2.03	0.59
2:B:71:HIS:CD2	2:B:154:VAL:CG2	2.86	0.58
2:B:107:LYS:HG3	2:B:107:LYS:O	2.03	0.58
3:C:60:PRO:HG2	3:C:63:TYS:CE2	2.29	0.57
2:B:36:LYS:HG2	2:B:65:LEU:HD22	1.86	0.57
2:B:204(B):ASN:C	2:B:204(B):ASN:HD22	2.06	0.56
2:B:130:LEU:CD2	2:B:162:ILE:CD1	2.83	0.56
2:B:35:ARG:HD3	2:B:39:GLU:OE2	2.05	0.56
2:B:165:ARG:O	2:B:169:LYS:HD3	2.06	0.56
2:B:50:ARG:HE	2:B:111:PRO:HD3	1.70	0.56
3:C:59:ILE:CG2	6:C:537:HOH:O	2.54	0.56
2:B:75:ARG:HH12	3:C:57:GLU:HB2	1.70	0.55
2:B:75:ARG:HH12	3:C:57:GLU:HB3	1.73	0.54
2:B:86:GLU:CD	2:B:107:LYS:HD3	2.28	0.54
2:B:91:HIS:ND1	2:B:92:PRO:HD2	2.24	0.53
2:B:35:ARG:O	2:B:38:GLN:CA	2.57	0.53
2:B:123:LEU:HD12	6:B:503:HOH:O	2.08	0.53
2:B:187:ARG:NH2	2:B:221:ASP:O	2.33	0.52
2:B:75:ARG:HA	2:B:75:ARG:HH11	1.67	0.52
2:B:236:LYS:CE	2:B:236:LYS:N	2.56	0.52
2:B:126:ARG:O	2:B:126:ARG:CG	2.58	0.52
2:B:32:MET:HG3	2:B:40:LEU:HD13	1.91	0.51
2:B:75:ARG:NH1	2:B:75:ARG:CB	2.72	0.50

*Continued on next page...*

*Continued from previous page...*

Atom-1	Atom-2	Interatomic distance (Å)	Clash overlap (Å)
2:B:165:ARG:N	2:B:166:PRO:HD2	2.27	0.50
2:B:102:ASP:OD2	2:B:214:SER:OG	2.23	0.50
2:B:130:LEU:HD22	2:B:162:ILE:HD13	1.93	0.49
2:B:87:LYS:HB3	2:B:89:TYR:CE1	2.48	0.49
2:B:35:ARG:NH1	2:B:39:GLU:OE2	2.37	0.49
2:B:17:VAL:O	2:B:188:GLY:HA2	2.13	0.48
2:B:32:MET:HG3	2:B:40:LEU:CD1	2.43	0.48
5:B:1:OIV:HB3	5:B:1:OIV:O2S	2.14	0.47
2:B:85:LEU:CD1	2:B:106:MET:HE2	2.43	0.47
2:B:51:TRP:HZ2	2:B:246:GLY:HA3	1.80	0.47
2:B:35:ARG:CD	2:B:39:GLU:OE2	2.63	0.46
2:B:165:ARG:O	2:B:169:LYS:CD	2.64	0.46
2:B:46:LEU:CD2	2:B:48:SER:O	2.63	0.46
2:B:136:GLY:HA3	2:B:199:PHE:CZ	2.51	0.46
2:B:129:ALA:HA	2:B:210:MET:HE1	1.97	0.46
2:B:85:LEU:HD11	2:B:106:MET:HE1	1.97	0.45
2:B:43:GLY:CA	6:B:564:HOH:O	2.43	0.45
2:B:130:LEU:HA	2:B:130:LEU:HD23	1.75	0.45
1:A:14(G):LEU:N	1:A:14(G):LEU:HD22	2.32	0.45
2:B:230:HIS:ND1	2:B:233:ARG:HG3	2.32	0.45
2:B:107:LYS:HE3	2:B:107:LYS:HB2	1.37	0.45
2:B:60(G):ASN:ND2	6:B:453:HOH:O	2.31	0.45
2:B:130:LEU:HD23	2:B:162:ILE:CD1	2.47	0.45
2:B:204(B):ASN:C	2:B:204(B):ASN:ND2	2.70	0.45
2:B:85:LEU:CD1	2:B:106:MET:CE	2.96	0.44
1:A:1(A):ASP:HB3	6:A:553:HOH:O	2.18	0.44
2:B:36:LYS:HE3	2:B:62:ASN:O	2.18	0.44
2:B:91:HIS:CG	2:B:92:PRO:HD2	2.52	0.44
2:B:86:GLU:HB3	2:B:107:LYS:CG	2.45	0.43
2:B:70:LYS:HE3	2:B:72:SER:O	2.18	0.43
2:B:22:ALA:O	2:B:71:HIS:HE1	2.00	0.43
2:B:33:LEU:CD2	2:B:64:LEU:HD22	2.48	0.43
2:B:84:MET:O	2:B:109:LYS:HB2	2.18	0.42
2:B:75:ARG:HG2	2:B:75:ARG:H	1.63	0.42
2:B:233:ARG:O	2:B:236:LYS:HD2	2.20	0.42
2:B:35:ARG:HB2	2:B:41:LEU:CD1	2.47	0.42
2:B:178:ASP:CB	2:B:233:ARG:NH1	2.79	0.41
2:B:125:ASP:OD1	2:B:128:THR:HB	2.19	0.41
2:B:211:GLY:HA2	2:B:229:THR:O	2.18	0.41
2:B:125:ASP:OD1	2:B:128:THR:CB	2.68	0.41
2:B:198:PRO:HB2	2:B:200:VAL:HG13	2.01	0.41

*Continued on next page...*

*Continued from previous page...*

Atom-1	Atom-2	Interatomic distance (Å)	Clash overlap (Å)
2:B:71:HIS:NE2	2:B:154:VAL:HG22	2.36	0.41
2:B:151:GLN:HA	2:B:152:PRO:HD3	1.86	0.41
2:B:188:GLY:O	2:B:189:ASP:HB2	2.21	0.41
2:B:87:LYS:HB3	2:B:89:TYR:HE1	1.86	0.41
2:B:236:LYS:HE2	2:B:236:LYS:HB3	1.84	0.40

There are no symmetry-related clashes.

## 5.3 Torsion angles [i](#)

### 5.3.1 Protein backbone [i](#)

In the following table, the Percentiles column shows the percent Ramachandran outliers of the chain as a percentile score with respect to all X-ray entries followed by that with respect to entries of similar resolution.

The Analysed column shows the number of residues for which the backbone conformation was analysed, and the total number of residues.

Mol	Chain	Analysed	Favoured	Allowed	Outliers	Percentiles	
1	A	24/36 (67%)	23 (96%)	1 (4%)	0	100	100
2	B	243/259 (94%)	232 (96%)	10 (4%)	1 (0%)	39	37
3	C	6/13 (46%)	6 (100%)	0	0	100	100
All	All	273/308 (89%)	261 (96%)	11 (4%)	1 (0%)	39	37

All (1) Ramachandran outliers are listed below:

Mol	Chain	Res	Type
2	B	245	PHE

### 5.3.2 Protein sidechains [i](#)

In the following table, the Percentiles column shows the percent sidechain outliers of the chain as a percentile score with respect to all X-ray entries followed by that with respect to entries of similar resolution.

The Analysed column shows the number of residues for which the sidechain conformation was analysed, and the total number of residues.

Mol	Chain	Analysed	Rotameric	Outliers	Percentiles	
1	A	23/31 (74%)	19 (83%)	4 (17%)	2	1
2	B	205/225 (91%)	185 (90%)	20 (10%)	10	6
3	C	4/10 (40%)	4 (100%)	0	100	100
All	All	232/266 (87%)	208 (90%)	24 (10%)	9	5

All (24) residues with a non-rotameric sidechain are listed below:

Mol	Chain	Res	Type
1	A	6	LEU
1	A	10	LYS
1	A	14(A)	LYS
1	A	14(F)	LEU
2	B	33	LEU
2	B	41	LEU
2	B	46	LEU
2	B	50	ARG
2	B	60(I)	THR
2	B	64	LEU
2	B	65	LEU
2	B	66	VAL
2	B	75	ARG
2	B	83	SER
2	B	87	LYS
2	B	107	LYS
2	B	129(B)	SER
2	B	130	LEU
2	B	154	VAL
2	B	163	VAL
2	B	182	CYS
2	B	204(B)	ASN
2	B	236	LYS
2	B	241	VAL

Some sidechains can be flipped to improve hydrogen bonding and reduce clashes. All (5) such sidechains are listed below:

Mol	Chain	Res	Type
2	B	78	ASN
2	B	156	GLN
2	B	204(B)	ASN
2	B	205	ASN
2	B	239	GLN

### 5.3.3 RNA ⓘ

There are no RNA molecules in this entry.

## 5.4 Non-standard residues in protein, DNA, RNA chains ⓘ

1 non-standard protein/DNA/RNA residue is modelled in this entry.

In the following table, the Counts columns list the number of bonds (or angles) for which Mogul statistics could be retrieved, the number of bonds (or angles) that are observed in the model and the number of bonds (or angles) that are defined in the chemical component dictionary. The Link column lists molecule types, if any, to which the group is linked. The Z score for a bond length (or angle) is the number of standard deviations the observed value is removed from the expected value. A bond length (or angle) with  $|Z| > 2$  is considered an outlier worth inspection. RMSZ is the root-mean-square of all Z scores of the bond lengths (or angles).

Mol	Type	Chain	Res	Link	Bond lengths			Bond angles		
					Counts	RMSZ	$\# Z  > 2$	Counts	RMSZ	$\# Z  > 2$
3	TYS	C	63	3	15,16,17	0.63	0	16,22,24	1.67	4 (25%)

In the following table, the Chirals column lists the number of chiral outliers, the number of chiral centers analysed, the number of these observed in the model and the number defined in the chemical component dictionary. Similar counts are reported in the Torsion and Rings columns. '-' means no outliers of that kind were identified.

Mol	Type	Chain	Res	Link	Chirals	Torsions	Rings
3	TYS	C	63	3	-	0/9/11/13	0/1/1/1

There are no bond length outliers.

All (4) bond angle outliers are listed below:

Mol	Chain	Res	Type	Atoms	Z	Observed(°)	Ideal(°)
3	C	63	TYS	CZ-OH-S	-2.76	113.82	118.52
3	C	63	TYS	O-C-CA	-2.47	119.05	125.49
3	C	63	TYS	CG-CB-CA	-2.43	108.72	114.21
3	C	63	TYS	CD1-CE1-CZ	-2.01	117.21	119.74

There are no chirality outliers.

There are no torsion outliers.

There are no ring outliers.

1 monomer is involved in 2 short contacts:

Mol	Chain	Res	Type	Clashes	Symm-Clashes
3	C	63	TYS	2	0

## 5.5 Carbohydrates [i](#)

There are no carbohydrates in this entry.

## 5.6 Ligand geometry [i](#)

Of 3 ligands modelled in this entry, 2 are monoatomic - leaving 1 for Mogul analysis.

In the following table, the Counts columns list the number of bonds (or angles) for which Mogul statistics could be retrieved, the number of bonds (or angles) that are observed in the model and the number of bonds (or angles) that are defined in the chemical component dictionary. The Link column lists molecule types, if any, to which the group is linked. The Z score for a bond length (or angle) is the number of standard deviations the observed value is removed from the expected value. A bond length (or angle) with  $|Z| > 2$  is considered an outlier worth inspection. RMSZ is the root-mean-square of all Z scores of the bond lengths (or angles).

Mol	Type	Chain	Res	Link	Bond lengths			Bond angles		
					Counts	RMSZ	$\# Z  > 2$	Counts	RMSZ	$\# Z  > 2$
5	0IV	B	1	-	36,37,37	2.94	14 (38%)	38,51,51	3.83	18 (47%)

In the following table, the Chirals column lists the number of chiral outliers, the number of chiral centers analysed, the number of these observed in the model and the number defined in the chemical component dictionary. Similar counts are reported in the Torsion and Rings columns. '-' means no outliers of that kind were identified.

Mol	Type	Chain	Res	Link	Chirals	Torsions	Rings
5	0IV	B	1	-	-	0/26/52/52	0/3/3/3

All (14) bond length outliers are listed below:

Mol	Chain	Res	Type	Atoms	Z	Observed(Å)	Ideal(Å)
5	B	1	0IV	CB1-CG1	-5.03	1.44	1.53
5	B	1	0IV	CD1-NE	-4.64	1.41	1.46
5	B	1	0IV	CB1-CA2	-3.79	1.42	1.54
5	B	1	0IV	CZ-NH2	-3.52	1.25	1.34
5	B	1	0IV	CA-N	-3.46	1.41	1.46
5	B	1	0IV	CA2-N2	-2.41	1.42	1.46
5	B	1	0IV	S-N	2.97	1.66	1.62
5	B	1	0IV	CD1-CG1	3.11	1.57	1.52
5	B	1	0IV	CA1-C8	3.48	1.57	1.52

*Continued on next page...*

*Continued from previous page...*

Mol	Chain	Res	Type	Atoms	Z	Observed(Å)	Ideal(Å)
5	B	1	0IV	O2-C9	3.85	1.37	1.19
5	B	1	0IV	C21-C31	4.15	1.66	1.51
5	B	1	0IV	C8-N2	5.23	1.44	1.34
5	B	1	0IV	C21-C11	5.98	1.69	1.53
5	B	1	0IV	C31-NE	8.76	1.62	1.47

All (18) bond angle outliers are listed below:

Mol	Chain	Res	Type	Atoms	Z	Observed(°)	Ideal(°)
5	B	1	0IV	CA1-N1-C7	-12.57	108.03	119.73
5	B	1	0IV	C21-C11-CG1	-11.18	94.19	112.22
5	B	1	0IV	CB1-CG1-C11	-6.59	96.04	111.67
5	B	1	0IV	O2S-S-N	-6.10	98.77	107.03
5	B	1	0IV	C11-C21-C31	-4.67	104.72	110.97
5	B	1	0IV	C31-NE-CD1	-3.17	106.36	112.76
5	B	1	0IV	O-C7-CA	-3.08	113.90	120.48
5	B	1	0IV	O1-C8-N2	-2.79	118.28	123.01
5	B	1	0IV	C-C1-C2	-2.61	116.96	120.52
5	B	1	0IV	CB1-CA2-N2	-2.01	105.47	110.48
5	B	1	0IV	CA2-N2-C8	2.54	128.04	121.59
5	B	1	0IV	CD1-NE-CZ	3.20	127.88	119.47
5	B	1	0IV	O2S-S-O1S	3.45	125.30	119.34
5	B	1	0IV	CG1-CD1-NE	3.64	116.96	110.26
5	B	1	0IV	C11-CG1-CD1	3.69	113.09	108.74
5	B	1	0IV	O-C7-N1	3.73	126.95	122.38
5	B	1	0IV	O2-C9-CA2	3.76	135.36	125.44
5	B	1	0IV	CB-CG-CD	5.36	118.14	110.97

There are no chirality outliers.

There are no torsion outliers.

There are no ring outliers.

1 monomer is involved in 4 short contacts:

Mol	Chain	Res	Type	Clashes	Symm-Clashes
5	B	1	0IV	4	0

## 5.7 Other polymers ⓘ

There are no such residues in this entry.



## 5.8 Polymer linkage issues ⓘ

There are no chain breaks in this entry.

## 6 Fit of model and data ⓘ

### 6.1 Protein, DNA and RNA chains ⓘ

EDS was not executed - this section will therefore be empty.

### 6.2 Non-standard residues in protein, DNA, RNA chains ⓘ

EDS was not executed - this section will therefore be empty.

### 6.3 Carbohydrates ⓘ

EDS was not executed - this section will therefore be empty.

### 6.4 Ligands ⓘ

EDS was not executed - this section will therefore be empty.

### 6.5 Other polymers ⓘ

EDS was not executed - this section will therefore be empty.