



Full wwPDB X-ray Structure Validation Report ⓘ

Feb 1, 2016 – 12:45 AM GMT

PDB ID : 2BEW
Title : REACTIVITY MODULATION OF HUMAN BRANCHED-CHAIN ALPHA-KETOACID DEHYDROGENASE BY AN INTERNAL MOLECULAR SWITCH
Authors : Machius, M.; Wynn, R.M.; Chuang, J.L.; Tomchick, D.R.; Brautigam, C.A.; Chuang, D.T.
Deposited on : 2004-11-30
Resolution : 1.79 Å(reported)

This is a Full wwPDB X-ray Structure Validation Report for a publicly released PDB entry.
We welcome your comments at validation@mail.wwpdb.org
A user guide is available at
<http://wwpdb.org/validation/2016/XrayValidationReportHelp>
with specific help available everywhere you see the ⓘ symbol.

The following versions of software and data (see [references ⓘ](#)) were used in the production of this report:

MolProbity : 4.02b-467
Mogul : 1.7 (RC4), CSD as536be (2015)
Xtriage (Phenix) : 1.9-1692
EDS : rb-20026688
Percentile statistics : 20151230.v01 (using entries in the PDB archive December 30th 2015)
Refmac : 5.8.0135
CCP4 : 6.5.0
Ideal geometry (proteins) : Engh & Huber (2001)
Ideal geometry (DNA, RNA) : Parkinson et al. (1996)
Validation Pipeline (wwPDB-VP) : trunk26865

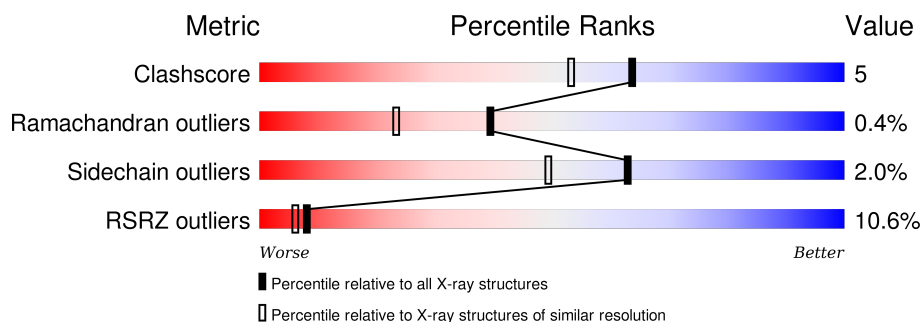
1 Overall quality at a glance

The following experimental techniques were used to determine the structure:

X-RAY DIFFRACTION

The reported resolution of this entry is 1.79 Å.

Percentile scores (ranging between 0-100) for global validation metrics of the entry are shown in the following graphic. The table shows the number of entries on which the scores are based.



Metric	Whole archive (#Entries)	Similar resolution (#Entries, resolution range(Å))
Clashscore	102246	5383 (1.80-1.80)
Ramachandran outliers	100387	5320 (1.80-1.80)
Sidechain outliers	100360	5319 (1.80-1.80)
RSRZ outliers	91569	4547 (1.80-1.80)

The table below summarises the geometric issues observed across the polymeric chains and their fit to the electron density. The red, orange, yellow and green segments on the lower bar indicate the fraction of residues that contain outliers for ≥ 3 , 2, 1 and 0 types of geometric quality criteria. A grey segment represents the fraction of residues that are not modelled. The numeric value for each fraction is indicated below the corresponding segment, with a dot representing fractions $\leq 5\%$. The upper red bar (where present) indicates the fraction of residues that have poor fit to the electron density. The numeric value is given above the bar.

Mol	Chain	Length	Quality of chain
1	A	400	
2	B	342	
3	C	3	

The following table lists non-polymeric compounds, carbohydrate monomers and non-standard residues in protein, DNA, RNA chains that are outliers for geometric or electron-density-fit criteria:

Mol	Type	Chain	Res	Chirality	Geometry	Clashes	Electron density
5	K	B	1343	-	-	-	X
8	GOL	B	1346	-	-	-	X

2 Entry composition

There are 9 unique types of molecules in this entry. The entry contains 6556 atoms, of which 0 are hydrogens and 0 are deuteriums.

In the tables below, the ZeroOcc column contains the number of atoms modelled with zero occupancy, the AltConf column contains the number of residues with at least one atom in alternate conformation and the Trace column contains the number of residues modelled with at most 2 atoms.

- Molecule 1 is a protein called 2-OXOISOVALERATE DEHYDROGENASE ALPHA SUB-UNIT.

Mol	Chain	Residues	Atoms					ZeroOcc	AltConf	Trace
1	A	390	Total	C	N	O	S	0	6	0
			3187	2007	572	590	18			

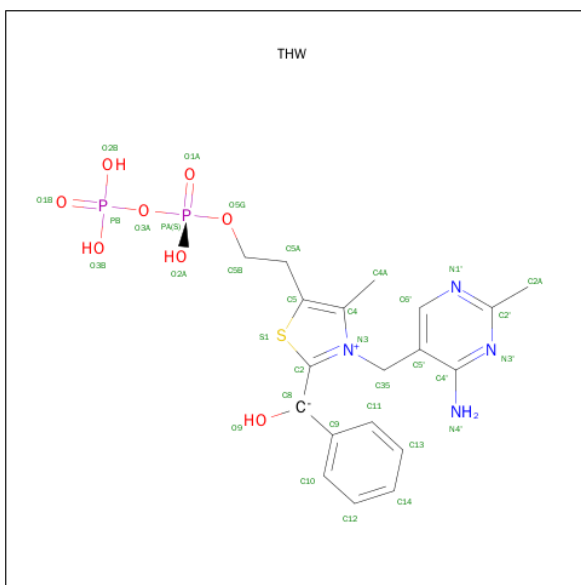
- Molecule 2 is a protein called 2-OXOISOVALERATE DEHYDROGENASE BETA SUB-UNIT.

Mol	Chain	Residues	Atoms					ZeroOcc	AltConf	Trace
2	B	336	Total	C	N	O	S	0	6	0
			2666	1719	439	493	15			

- Molecule 3 is a protein called PEPTIDE ALA-TYR-ARG.

Mol	Chain	Residues	Atoms				ZeroOcc	AltConf	Trace
3	C	3	Total	C	N	O	0	0	0
			28	18	6	4			

- Molecule 4 is C2-1-HYDROXYPHENYL-THIAMIN DIPHOSPHATE (three-letter code: THW) (formula: C₁₉H₂₄N₄O₈P₂S).



Mol	Chain	Residues	Atoms						ZeroOcc	AltConf
4	A	1	Total	C	N	O	P	S	0	0
			34	19	4	8	2	1		

- Molecule 5 is POTASSIUM ION (three-letter code: K) (formula: K).

Mol	Chain	Residues	Atoms	ZeroOcc	AltConf
5	B	1	Total K 1 1	0	0
5	A	1	Total K 1 1	0	0

- Molecule 6 is MANGANESE (II) ION (three-letter code: MN) (formula: Mn).

Mol	Chain	Residues	Atoms	ZeroOcc	AltConf
6	A	1	Total Mn 1 1	0	0

- Molecule 7 is CHLORIDE ION (three-letter code: CL) (formula: Cl).

Mol	Chain	Residues	Atoms	ZeroOcc	AltConf
7	B	1	Total Cl 1 1	0	0
7	A	1	Total Cl 1 1	0	0

- Molecule 8 is GLYCEROL (three-letter code: GOL) (formula: $\text{C}_3\text{H}_8\text{O}_3$).



Mol	Chain	Residues	Atoms			ZeroOcc	AltConf
8	B	1	Total	C	O	0	0
			6	3	3		
8	B	1	Total	C	O	0	0
			6	3	3		

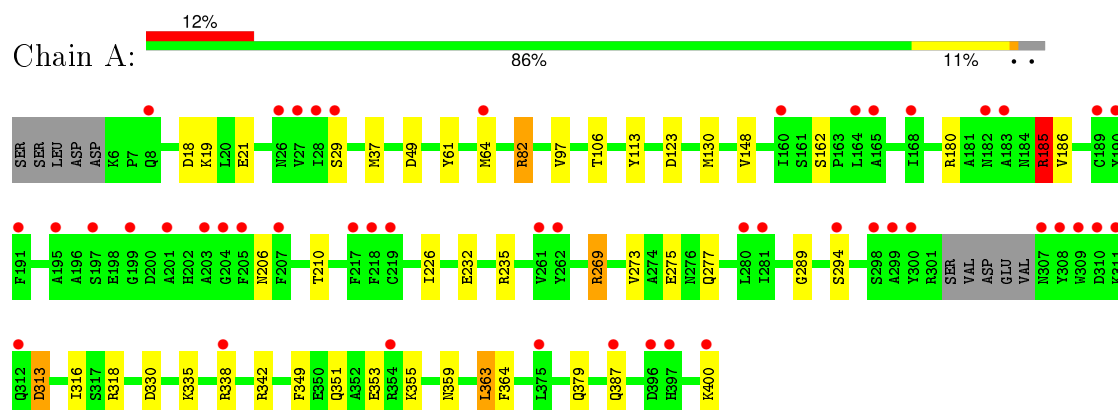
- Molecule 9 is water.

Mol	Chain	Residues	Atoms		ZeroOcc	AltConf
9	A	350	Total	O	0	0
			350	350		
9	B	270	Total	O	0	0
			270	270		
9	C	4	Total	O	0	0
			4	4		

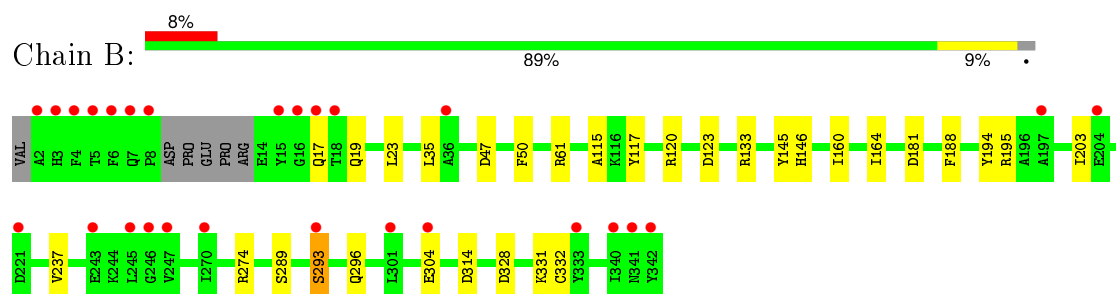
3 Residue-property plots [i](#)

These plots are drawn for all protein, RNA and DNA chains in the entry. The first graphic for a chain summarises the proportions of errors displayed in the second graphic. The second graphic shows the sequence view annotated by issues in geometry and electron density. Residues are color-coded according to the number of geometric quality criteria for which they contain at least one outlier: green = 0, yellow = 1, orange = 2 and red = 3 or more. A red dot above a residue indicates a poor fit to the electron density ($RSRZ > 2$). Stretches of 2 or more consecutive residues without any outlier are shown as a green connector. Residues present in the sample, but not in the model, are shown in grey.

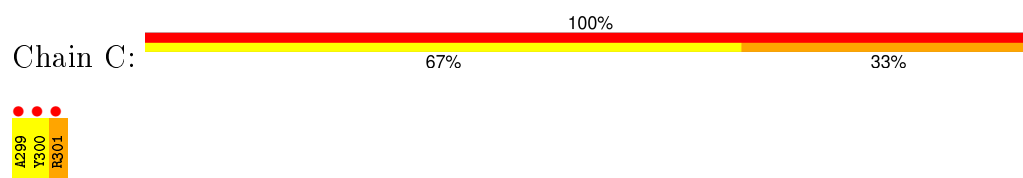
• Molecule 1: 2-OXOISOVALERATE DEHYDROGENASE ALPHA SUBUNIT



• Molecule 2: 2-OXOISOVALERATE DEHYDROGENASE BETA SUBUNIT



• Molecule 3: PEPTIDE ALA-TYR-ARG



4 Data and refinement statistics

Property	Value	Source
Space group	P 31 2 1	Depositor
Cell constants a, b, c, α , β , γ	144.56 Å 144.56 Å 69.49 Å 90.00° 90.00° 120.00°	Depositor
Resolution (Å)	30.00 – 1.79 36.14 – 1.79	Depositor EDS
% Data completeness (in resolution range)	99.4 (30.00-1.79) 99.4 (36.14-1.79)	Depositor EDS
R_{merge}	0.07	Depositor
R_{sym}	(Not available)	Depositor
$\langle I/\sigma(I) \rangle$ ¹	2.98 (at 1.79 Å)	Xtriage
Refinement program	REFMAC 5.2.0003	Depositor
R, R_{free}	0.146 , 0.170 0.163 , (Not available)	Depositor DCC
R_{free} test set	No test flags present.	DCC
Wilson B-factor (Å ²)	15.6	Xtriage
Anisotropy	0.525	Xtriage
Bulk solvent k_{sol} (e/Å ³), B_{sol} (Å ²)	0.38 , 57.3	EDS
Estimated twinning fraction	0.021 for -h,-k,l	Xtriage
L-test for twinning ²	$\langle L \rangle = 0.50$, $\langle L^2 \rangle = 0.34$	Xtriage
Outliers	0 of 77909 reflections	Xtriage
F_o, F_c correlation	0.96	EDS
Total number of atoms	6556	wwPDB-VP
Average B, all atoms (Å ²)	23.0	wwPDB-VP

Xtriage's analysis on translational NCS is as follows: *The largest off-origin peak in the Patterson function is 3.16% of the height of the origin peak. No significant pseudotranslation is detected.*

¹Intensities estimated from amplitudes.

²Theoretical values of $\langle |L| \rangle$, $\langle L^2 \rangle$ for acentric reflections are 0.5, 0.375 respectively for untwinned datasets, and 0.333, 0.2 for perfectly twinned datasets.

5 Model quality [i](#)

5.1 Standard geometry [i](#)

Bond lengths and bond angles in the following residue types are not validated in this section: THW, GOL, K, MN, CL

The Z score for a bond length (or angle) is the number of standard deviations the observed value is removed from the expected value. A bond length (or angle) with $|Z| > 5$ is considered an outlier worth inspection. RMSZ is the root-mean-square of all Z scores of the bond lengths (or angles).

Mol	Chain	Bond lengths		Bond angles	
		RMSZ	$\# Z > 5$	RMSZ	$\# Z > 5$
1	A	0.95	2/3266 (0.1%)	1.01	12/4412 (0.3%)
2	B	0.95	0/2735	0.99	9/3718 (0.2%)
3	C	0.99	0/28	1.05	0/36
All	All	0.95	2/6029 (0.0%)	1.00	21/8166 (0.3%)

All (2) bond length outliers are listed below:

Mol	Chain	Res	Type	Atoms	Z	Observed(Å)	Ideal(Å)
1	A	232	GLU	CD-OE2	-5.85	1.19	1.25
1	A	162	SER	CB-OG	5.37	1.49	1.42

All (21) bond angle outliers are listed below:

Mol	Chain	Res	Type	Atoms	Z	Observed(°)	Ideal(°)
1	A	363	LEU	CA-CB-CG	8.95	135.89	115.30
1	A	185	ARG	NE-CZ-NH1	8.07	124.33	120.30
1	A	82	ARG	NE-CZ-NH2	-7.81	116.39	120.30
1	A	185	ARG	NE-CZ-NH2	-7.43	116.58	120.30
2	B	47	ASP	CB-CG-OD2	7.23	124.81	118.30
2	B	123	ASP	CB-CG-OD2	6.30	123.97	118.30
1	A	49	ASP	CB-CG-OD1	5.96	123.66	118.30
2	B	274	ARG	NE-CZ-NH2	-5.93	117.33	120.30
1	A	18	ASP	CB-CG-OD2	5.71	123.44	118.30
1	A	269	ARG	NE-CZ-NH1	5.64	123.12	120.30
1	A	313	ASP	CB-CG-OD2	5.61	123.35	118.30
2	B	328	ASP	CB-CG-OD2	5.57	123.31	118.30
2	B	181	ASP	CB-CG-OD1	5.52	123.27	118.30
1	A	180	ARG	NE-CZ-NH2	-5.50	117.55	120.30
1	A	37	MET	CG-SD-CE	-5.46	91.46	100.20
2	B	314	ASP	CB-CG-OD2	5.22	123.00	118.30

Continued on next page...

Continued from previous page...

Mol	Chain	Res	Type	Atoms	Z	Observed(°)	Ideal(°)
2	B	61	ARG	NE-CZ-NH1	5.13	122.86	120.30
2	B	331	LYS	CD-CE-NZ	-5.11	99.94	111.70
1	A	330	ASP	CB-CG-OD2	5.07	122.86	118.30
1	A	123	ASP	CB-CG-OD2	5.07	122.86	118.30
2	B	120	ARG	NE-CZ-NH1	-5.00	117.80	120.30

There are no chirality outliers.

There are no planarity outliers.

5.2 Too-close contacts ⓘ

In the following table, the Non-H and H(model) columns list the number of non-hydrogen atoms and hydrogen atoms in the chain respectively. The H(added) column lists the number of hydrogen atoms added and optimized by MolProbity. The Clashes column lists the number of clashes within the asymmetric unit, whereas Symm-Clashes lists symmetry related clashes.

Mol	Chain	Non-H	H(model)	H(added)	Clashes	Symm-Clashes
1	A	3187	0	3071	46	0
2	B	2666	0	2618	10	0
3	C	28	0	26	9	0
4	A	34	0	20	4	0
5	A	1	0	0	0	0
5	B	1	0	0	0	0
6	A	1	0	0	0	0
7	A	1	0	0	0	0
7	B	1	0	0	0	0
8	B	12	0	16	1	0
9	A	350	0	0	2	0
9	B	270	0	0	3	0
9	C	4	0	0	1	0
All	All	6556	0	5751	61	0

The all-atom clashscore is defined as the number of clashes found per 1000 atoms (including hydrogen atoms). The all-atom clashscore for this structure is 5.

All (61) close contacts within the same asymmetric unit are listed below, sorted by their clash magnitude.

Atom-1	Atom-2	Interatomic distance (Å)	Clash overlap (Å)
1:A:294:SER:CB	3:C:300:TYR:HD1	1.54	1.19
1:A:186[A]:VAL:CG2	1:A:273:VAL:CG2	2.22	1.16

Continued on next page...

Continued from previous page...

Atom-1	Atom-2	Interatomic distance (Å)	Clash overlap (Å)
1:A:294:SER:CB	3:C:300:TYR:CD1	2.29	1.15
1:A:294:SER:HB3	3:C:300:TYR:CD1	1.85	1.10
1:A:294:SER:HB3	3:C:300:TYR:HD1	0.94	1.05
1:A:186[A]:VAL:CG2	1:A:273:VAL:HG22	1.84	1.04
1:A:294:SER:HB2	3:C:300:TYR:CD1	1.94	1.02
1:A:294:SER:HB2	3:C:300:TYR:CE1	1.97	0.99
1:A:186[A]:VAL:HG23	1:A:273:VAL:CG2	1.94	0.97
1:A:186[A]:VAL:HG22	1:A:273:VAL:HG22	1.45	0.97
2:B:146[B]:HIS:HE1	9:B:2130:HOH:O	1.52	0.90
1:A:64[B]:MET:SD	1:A:316:ILE:HG12	2.13	0.89
2:B:146[B]:HIS:CE1	9:B:2130:HOH:O	2.27	0.84
1:A:186[A]:VAL:CG2	1:A:273:VAL:HG23	2.16	0.75
1:A:186[A]:VAL:HG23	1:A:273:VAL:HG21	1.72	0.71
1:A:359:ASN:ND2	1:A:400:LYS:HB2	2.06	0.71
1:A:359:ASN:HD22	1:A:400:LYS:HD3	1.56	0.70
1:A:338:ARG:O	1:A:342:ARG:HG3	1.92	0.70
1:A:61:TYR:O	1:A:64[B]:MET:HG2	1.93	0.69
4:A:601:THW:H4'1	4:A:601:THW:C8	2.07	0.67
1:A:186[A]:VAL:HG23	1:A:273:VAL:HG22	1.65	0.66
3:C:299:ALA:N	9:C:2002:HOH:O	2.30	0.65
2:B:289:SER:O	2:B:293[B]:SER:HB3	1.98	0.63
1:A:186[A]:VAL:HG22	1:A:273:VAL:CG2	2.08	0.63
1:A:351:GLN:HG2	1:A:355:LYS:HE3	1.79	0.63
1:A:185:ARG:NH2	8:B:1346:GOL:O1	2.32	0.62
1:A:359:ASN:HD22	1:A:400:LYS:HB2	1.63	0.62
1:A:313:ASP:OD1	1:A:318[B]:ARG:NH2	2.31	0.61
1:A:294:SER:HB2	3:C:300:TYR:HE1	1.62	0.61
1:A:106:THR:O	1:A:185:ARG:HD2	2.02	0.59
1:A:64[B]:MET:CE	1:A:316:ILE:HG12	2.32	0.59
1:A:130:MET:SD	1:A:349:PHE:HA	2.47	0.55
1:A:82:ARG:HD3	1:A:353:GLU:OE2	2.08	0.54
1:A:186[A]:VAL:HG21	1:A:273:VAL:CG2	2.31	0.53
1:A:186[A]:VAL:HG21	1:A:273:VAL:HG23	1.88	0.52
1:A:351:GLN:CG	1:A:355:LYS:HE3	2.40	0.51
2:B:195:ARG:NH1	9:B:2165:HOH:O	2.42	0.51
1:A:206:ASN:O	1:A:210:THR:HG23	2.10	0.50
1:A:64[A]:MET:SD	1:A:97:VAL:HG21	2.53	0.49
1:A:64[B]:MET:HE2	1:A:316:ILE:HG12	1.96	0.48
1:A:359:ASN:HD22	1:A:400:LYS:CD	2.25	0.48
2:B:19:GLN:HE21	2:B:203:ILE:CD1	2.27	0.48
4:A:601:THW:O9	4:A:601:THW:H351	2.13	0.48

Continued on next page...

Continued from previous page...

Atom-1	Atom-2	Interatomic distance (Å)	Clash overlap (Å)
2:B:145:TYR:O	2:B:146[B]:HIS:HD2	1.97	0.47
1:A:269:ARG:O	1:A:273:VAL:HG23	2.16	0.46
1:A:335:LYS:HB2	1:A:335:LYS:NZ	2.32	0.44
1:A:275:GLU:OE1	1:A:277:GLN:NE2	2.45	0.44
1:A:186[A]:VAL:HG21	1:A:269:ARG:HG2	2.00	0.43
1:A:294:SER:O	3:C:301:ARG:C	2.56	0.43
2:B:164:ILE:HG12	2:B:188:PHE:HB2	2.00	0.43
1:A:289:GLY:HA3	9:A:2258:HOH:O	2.19	0.42
4:A:601:THW:H4'1	4:A:601:THW:C2	2.33	0.42
1:A:64[B]:MET:HB2	1:A:64[B]:MET:HE2	1.67	0.42
1:A:235:ARG:HD3	1:A:235:ARG:HA	1.87	0.41
4:A:601:THW:H4A1	4:A:601:THW:H352	1.82	0.41
1:A:29:SER:CB	9:A:2035:HOH:O	2.68	0.41
2:B:115:ALA:HB2	2:B:160:ILE:HG23	2.01	0.41
2:B:237:VAL:HG21	2:B:332:CYS:HB2	2.03	0.41
1:A:364:PHE:CD2	1:A:379:GLN:HG3	2.56	0.41
1:A:19:LYS:HG3	1:A:21:GLU:OE2	2.21	0.40
2:B:23[B]:LEU:HB3	2:B:194:TYR:HA	2.03	0.40

There are no symmetry-related clashes.

5.3 Torsion angles [i](#)

5.3.1 Protein backbone [i](#)

In the following table, the Percentiles column shows the percent Ramachandran outliers of the chain as a percentile score with respect to all X-ray entries followed by that with respect to entries of similar resolution.

The Analysed column shows the number of residues for which the backbone conformation was analysed, and the total number of residues.

Mol	Chain	Analysed	Favoured	Allowed	Outliers	Percentiles	
1	A	392/400 (98%)	382 (97%)	7 (2%)	3 (1%)	24	8
2	B	338/342 (99%)	328 (97%)	10 (3%)	0	100	100
3	C	1/3 (33%)	1 (100%)	0	0	100	100
All	All	731/745 (98%)	711 (97%)	17 (2%)	3 (0%)	39	23

All (3) Ramachandran outliers are listed below:

Mol	Chain	Res	Type
1	A	113	TYR
1	A	148	VAL
1	A	226	ILE

5.3.2 Protein sidechains [i](#)

In the following table, the Percentiles column shows the percent sidechain outliers of the chain as a percentile score with respect to all X-ray entries followed by that with respect to entries of similar resolution.

The Analysed column shows the number of residues for which the sidechain conformation was analysed, and the total number of residues.

Mol	Chain	Analysed	Rotameric	Outliers	Percentiles	
1	A	332/336 (99%)	329 (99%)	3 (1%)	84	80
2	B	289/289 (100%)	280 (97%)	9 (3%)	47	30
3	C	2/2 (100%)	1 (50%)	1 (50%)	0	0
All	All	623/627 (99%)	610 (98%)	13 (2%)	63	47

All (13) residues with a non-rotameric sidechain are listed below:

Mol	Chain	Res	Type
1	A	185	ARG
1	A	363	LEU
1	A	387	GLN
2	B	17	GLN
2	B	35	LEU
2	B	50	PHE
2	B	117	TYR
2	B	133	ARG
2	B	293[A]	SER
2	B	293[B]	SER
2	B	296	GLN
2	B	304	GLU
3	C	301	ARG

Some sidechains can be flipped to improve hydrogen bonding and reduce clashes. All (7) such sidechains are listed below:

Mol	Chain	Res	Type
1	A	233	GLN
1	A	276	ASN

Continued on next page...

Continued from previous page...

Mol	Chain	Res	Type
1	A	312	GLN
1	A	321	HIS
1	A	387	GLN
2	B	19	GLN
2	B	296	GLN

5.3.3 RNA [i](#)

There are no RNA molecules in this entry.

5.4 Non-standard residues in protein, DNA, RNA chains [i](#)

There are no non-standard protein/DNA/RNA residues in this entry.

5.5 Carbohydrates [i](#)

There are no carbohydrates in this entry.

5.6 Ligand geometry [i](#)

Of 8 ligands modelled in this entry, 5 are monoatomic - leaving 3 for Mogul analysis.

In the following table, the Counts columns list the number of bonds (or angles) for which Mogul statistics could be retrieved, the number of bonds (or angles) that are observed in the model and the number of bonds (or angles) that are defined in the chemical component dictionary. The Link column lists molecule types, if any, to which the group is linked. The Z score for a bond length (or angle) is the number of standard deviations the observed value is removed from the expected value. A bond length (or angle) with $|Z| > 2$ is considered an outlier worth inspection. RMSZ is the root-mean-square of all Z scores of the bond lengths (or angles).

Mol	Type	Chain	Res	Link	Bond lengths			Bond angles		
					Counts	RMSZ	$\# Z > 2$	Counts	RMSZ	$\# Z > 2$
4	THW	A	601	6	30,36,36	1.78	7 (23%)	42,53,53	2.19	16 (38%)
8	GOL	B	1345	-	5,5,5	0.49	0	5,5,5	0.45	0
8	GOL	B	1346	-	5,5,5	0.38	0	5,5,5	0.66	0

In the following table, the Chirals column lists the number of chiral outliers, the number of chiral centers analysed, the number of these observed in the model and the number defined in the chemical component dictionary. Similar counts are reported in the Torsion and Rings columns. '-' means no outliers of that kind were identified.

Mol	Type	Chain	Res	Link	Chirals	Torsions	Rings
4	THW	A	601	6	-	0/20/25/25	0/3/3/3
8	GOL	B	1345	-	-	0/4/4/4	0/0/0/0
8	GOL	B	1346	-	-	0/4/4/4	0/0/0/0

All (7) bond length outliers are listed below:

Mol	Chain	Res	Type	Atoms	Z	Observed(Å)	Ideal(Å)
4	A	601	THW	O9-C8	-4.87	1.27	1.42
4	A	601	THW	C4-N3	-2.03	1.35	1.39
4	A	601	THW	C6'-C5'	2.02	1.42	1.37
4	A	601	THW	C4A-C4	2.30	1.54	1.49
4	A	601	THW	PB-O1B	3.12	1.61	1.51
4	A	601	THW	C4'-N3'	3.60	1.40	1.35
4	A	601	THW	C35-C5'	4.14	1.60	1.51

All (16) bond angle outliers are listed below:

Mol	Chain	Res	Type	Atoms	Z	Observed(°)	Ideal(°)
4	A	601	THW	N1'-C2'-N3'	-3.83	118.52	125.60
4	A	601	THW	C13-C11-C9	-2.82	116.90	120.64
4	A	601	THW	C35-N3-C2	-2.71	119.39	124.42
4	A	601	THW	C4A-C4-C5	-2.53	123.21	128.90
4	A	601	THW	C5'-C35-N3	-2.44	109.27	113.31
4	A	601	THW	O9-C8-C9	-2.13	105.88	110.62
4	A	601	THW	C4A-C4-N3	-2.07	120.09	122.82
4	A	601	THW	C35-C5'-C4'	2.09	127.99	121.83
4	A	601	THW	C2-C8-C9	2.44	116.51	112.05
4	A	601	THW	C11-C9-C10	2.69	121.74	118.31
4	A	601	THW	O3B-PB-O1B	2.92	119.97	110.58
4	A	601	THW	C5A-C5-S1	3.20	124.71	120.24
4	A	601	THW	C5-C4-N3	3.79	116.64	107.83
4	A	601	THW	C6'-N1'-C2'	3.82	122.44	115.77
4	A	601	THW	C2A-C2'-N1'	4.83	122.83	117.03
4	A	601	THW	C5A-C5-C4	6.15	133.07	127.56

There are no chirality outliers.

There are no torsion outliers.

There are no ring outliers.

2 monomers are involved in 5 short contacts:

Mol	Chain	Res	Type	Clashes	Symm-Clashes
4	A	601	THW	4	0

Continued on next page...

Continued from previous page...

Mol	Chain	Res	Type	Clashes	Symm-Clashes
8	B	1346	GOL	1	0

5.7 Other polymers [i](#)

There are no such residues in this entry.

5.8 Polymer linkage issues [i](#)

There are no chain breaks in this entry.

6 Fit of model and data ⓘ

6.1 Protein, DNA and RNA chains ⓘ

In the following table, the column labelled ‘#RSRZ> 2’ contains the number (and percentage) of RSRZ outliers, followed by percent RSRZ outliers for the chain as percentile scores relative to all X-ray entries and entries of similar resolution. The OWAB column contains the minimum, median, 95th percentile and maximum values of the occupancy-weighted average B-factor per residue. The column labelled ‘Q< 0.9’ lists the number of (and percentage) of residues with an average occupancy less than 0.9.

Mol	Chain	Analysed	<RSRZ>	#RSRZ>2	OWAB(Å ²)	Q<0.9
1	A	390/400 (97%)	0.68	47 (12%) 6 4	15, 21, 38, 54	0
2	B	336/342 (98%)	0.16	27 (8%) 15 12	13, 19, 33, 48	0
3	C	3/3 (100%)	4.54	3 (100%) 0 0	42, 42, 44, 47	0
All	All	729/745 (97%)	0.45	77 (10%) 8 6	13, 20, 37, 54	0

All (77) RSRZ outliers are listed below:

Mol	Chain	Res	Type	RSRZ
1	A	308	TYR	8.6
2	B	5	THR	6.3
1	A	299	ALA	6.1
2	B	8	PRO	6.0
2	B	2	ALA	6.0
2	B	197	ALA	5.9
1	A	309	TRP	5.7
2	B	7	GLN	5.6
1	A	312	GLN	5.6
3	C	299	ALA	5.6
1	A	64[A]	MET	5.4
2	B	6	PHE	5.2
1	A	311	LYS	4.9
2	B	15	TYR	4.8
2	B	3	HIS	4.6
2	B	301	LEU	4.6
2	B	342	TYR	4.4
3	C	300	TYR	4.2
2	B	247	VAL	4.1
1	A	300	TYR	4.0
2	B	245	LEU	4.0
3	C	301	ARG	3.9
2	B	4	PHE	3.8

Continued on next page...

Continued from previous page...

Mol	Chain	Res	Type	RSRZ
2	B	17	GLN	3.6
1	A	310	ASP	3.5
1	A	28	ILE	3.4
2	B	246	GLY	3.2
1	A	182	ASN	3.1
1	A	375	LEU	3.1
2	B	340	ILE	3.1
1	A	298	SER	3.1
2	B	341	ASN	3.0
1	A	168	ILE	2.9
2	B	293[A]	SER	2.9
1	A	218	PHE	2.9
2	B	270	ILE	2.9
1	A	400	LYS	2.8
1	A	29	SER	2.8
1	A	26	ASN	2.8
2	B	333	TYR	2.8
1	A	201	ALA	2.8
1	A	219	CYS	2.7
1	A	387	GLN	2.7
1	A	280	LEU	2.7
2	B	16	GLY	2.6
1	A	164	LEU	2.6
1	A	195	ALA	2.5
1	A	203	ALA	2.5
1	A	261	VAL	2.5
1	A	307	ASN	2.5
1	A	338	ARG	2.5
2	B	221	ASP	2.5
1	A	8	GLN	2.4
1	A	165	ALA	2.3
1	A	204	GLY	2.3
1	A	217	PHE	2.3
1	A	397	HIS	2.3
2	B	243	GLU	2.3
1	A	396	ASP	2.3
1	A	281	ILE	2.3
1	A	197	SER	2.2
1	A	205	PHE	2.2
1	A	294	SER	2.2
1	A	354	ARG	2.2
1	A	199	GLY	2.2

Continued on next page...

Continued from previous page...

Mol	Chain	Res	Type	RSRZ
1	A	27	VAL	2.2
1	A	207	PHE	2.1
2	B	304	GLU	2.1
2	B	18	THR	2.1
1	A	191	PHE	2.1
2	B	204	GLU	2.1
1	A	183	ALA	2.1
1	A	189	CYS	2.1
1	A	190	TYR	2.1
1	A	262	TYR	2.1
2	B	36	ALA	2.0
1	A	160	ILE	2.0

6.2 Non-standard residues in protein, DNA, RNA chains ⓘ

There are no non-standard protein/DNA/RNA residues in this entry.

6.3 Carbohydrates ⓘ

There are no carbohydrates in this entry.

6.4 Ligands ⓘ

In the following table, the Atoms column lists the number of modelled atoms in the group and the number defined in the chemical component dictionary. LLDF column lists the quality of electron density of the group with respect to its neighbouring residues in protein, DNA or RNA chains. The B-factors column lists the minimum, median, 95th percentile and maximum values of B factors of atoms in the group. The column labelled 'Q< 0.9' lists the number of atoms with occupancy less than 0.9.

Mol	Type	Chain	Res	Atoms	RSCC	RSR	LLDF	B-factors(Å ²)	Q<0.9
5	K	B	1343	1/1	0.99	0.13	4.97	24,24,24,24	0
8	GOL	B	1346	6/6	0.89	0.26	4.01	32,37,38,40	0
4	THW	A	601	34/34	0.98	0.18	1.17	13,16,29,30	0
7	CL	B	1344	1/1	0.98	0.10	0.15	31,31,31,31	0
8	GOL	B	1345	6/6	0.97	0.07	-0.77	14,16,17,18	0
5	K	A	1401	1/1	1.00	0.08	-2.11	20,20,20,20	0
6	MN	A	1402	1/1	0.99	0.03	-9.98	13,13,13,13	0
7	CL	A	1404	1/1	0.90	0.06	-	63,63,63,63	0

6.5 Other polymers

There are no such residues in this entry.