



# Full wwPDB X-ray Structure Validation Report ⓘ

Feb 1, 2016 – 12:46 AM GMT

PDB ID : 2BFC  
Title : REACTIVITY MODULATION OF HUMAN BRANCHED-CHAIN ALPHA-KETOACID DEHYDROGENASE BY AN INTERNAL MOLECULAR SWITCH  
Authors : Machius, M.; Wynn, R.M.; Chuang, J.L.; Tomchick, D.R.; Brautigam, C.A.; Chuang, D.T.  
Deposited on : 2004-12-06  
Resolution : 1.64 Å(reported)

This is a Full wwPDB X-ray Structure Validation Report for a publicly released PDB entry.  
We welcome your comments at [validation@mail.wwpdb.org](mailto:validation@mail.wwpdb.org)  
A user guide is available at  
<http://wwpdb.org/validation/2016/XrayValidationReportHelp>  
with specific help available everywhere you see the ⓘ symbol.

---

The following versions of software and data (see [references ⓘ](#)) were used in the production of this report:

MolProbity : 4.02b-467  
Mogul : 1.7 (RC4), CSD as536be (2015)  
Xtriage (Phenix) : 1.9-1692  
EDS : rb-20026688  
Percentile statistics : 20151230.v01 (using entries in the PDB archive December 30th 2015)  
Refmac : 5.8.0135  
CCP4 : 6.5.0  
Ideal geometry (proteins) : Engh & Huber (2001)  
Ideal geometry (DNA, RNA) : Parkinson et al. (1996)  
Validation Pipeline (wwPDB-VP) : trunk26865

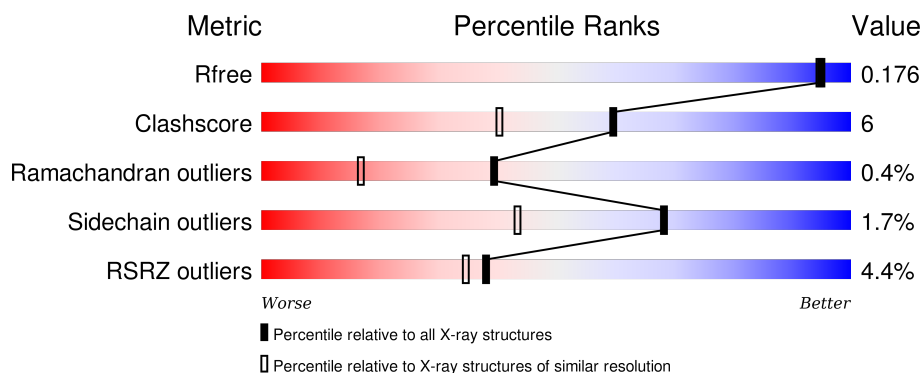
# 1 Overall quality at a glance

The following experimental techniques were used to determine the structure:

## *X-RAY DIFFRACTION*


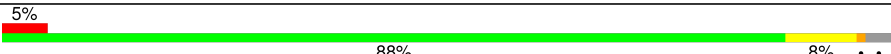
The reported resolution of this entry is 1.64 Å.

Percentile scores (ranging between 0-100) for global validation metrics of the entry are shown in the following graphic. The table shows the number of entries on which the scores are based.



Metric	Whole archive (#Entries)	Similar resolution (#Entries, resolution range(Å))
$R_{free}$	91344	1953 (1.66-1.62)
Clashscore	102246	2091 (1.66-1.62)
Ramachandran outliers	100387	2052 (1.66-1.62)
Sidechain outliers	100360	2052 (1.66-1.62)
RSRZ outliers	91569	1955 (1.66-1.62)

The table below summarises the geometric issues observed across the polymeric chains and their fit to the electron density. The red, orange, yellow and green segments on the lower bar indicate the fraction of residues that contain outliers for  $\geq 3$ , 2, 1 and 0 types of geometric quality criteria. A grey segment represents the fraction of residues that are not modelled. The numeric value for each fraction is indicated below the corresponding segment, with a dot representing fractions  $\leq 5\%$ . The upper red bar (where present) indicates the fraction of residues that have poor fit to the electron density. The numeric value is given above the bar.

Mol	Chain	Length	Quality of chain
1	A	400	 4% 81% 10% • 7%
2	B	342	 5% 88% 8% • •

## 2 Entry composition

There are 7 unique types of molecules in this entry. The entry contains 6535 atoms, of which 0 are hydrogens and 0 are deuteriums.

In the tables below, the ZeroOcc column contains the number of atoms modelled with zero occupancy, the AltConf column contains the number of residues with at least one atom in alternate conformation and the Trace column contains the number of residues modelled with at most 2 atoms.

- Molecule 1 is a protein called 2-OXOISOVALERATE DEHYDROGENASE ALPHA SUB-UNIT.

Mol	Chain	Residues	Atoms					ZeroOcc	AltConf	Trace
1	A	371	Total	C	N	O	S	0	24	0
			3190	2018	565	585	22			

There is a discrepancy between the modelled and reference sequences:

Chain	Residue	Modelled	Actual	Comment	Reference
A	113	PHE	TYR	ENGINEERED MUTATION	UNP P12694

- Molecule 2 is a protein called 2-OXOISOVALERATE DEHYDROGENASE BETA SUB-UNIT.

Mol	Chain	Residues	Atoms					ZeroOcc	AltConf	Trace
2	B	332	Total	C	N	O	S	0	12	0
			2695	1731	451	498	15			

- Molecule 3 is POTASSIUM ION (three-letter code: K) (formula: K).

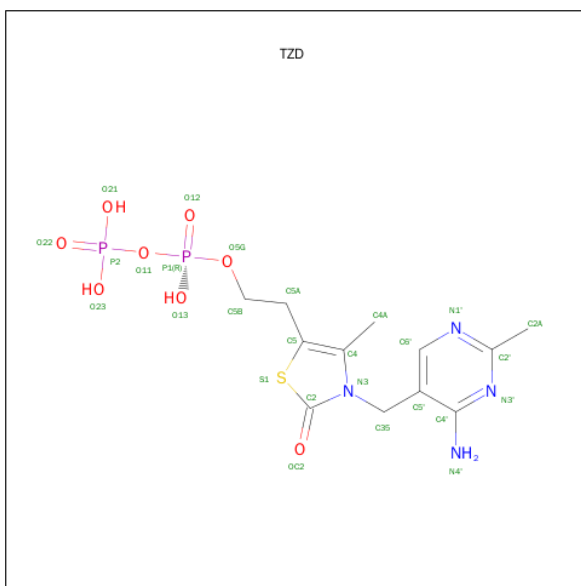
Mol	Chain	Residues	Atoms		ZeroOcc	AltConf
3	B	1	Total	K	0	0
			1	1		
3	A	1	Total	K	0	0
			1	1		

- Molecule 4 is MANGANESE (II) ION (three-letter code: MN) (formula: Mn).

Mol	Chain	Residues	Atoms		ZeroOcc	AltConf
4	A	1	Total	Mn	0	0
			1	1		

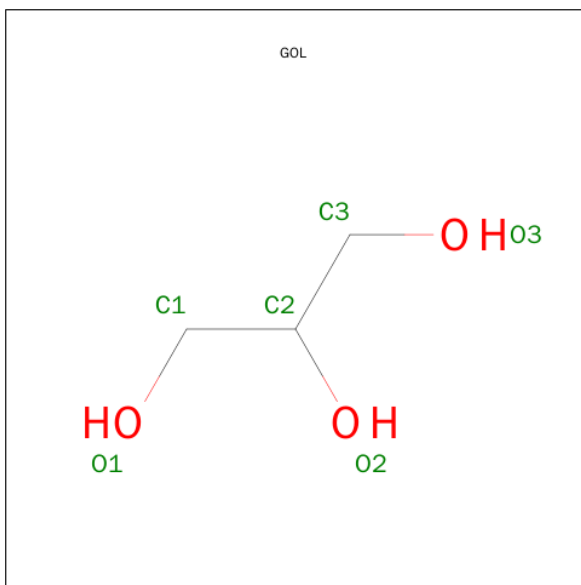
- Molecule 5 is 2-{3-[(4-AMINO-2-METHYLPYRIMIDIN-5-YL)METHYL]-4-METHYL-2-OXO-2,3-DIHYDRO-1,3-THIAZOL-5-YL}ETHYL TRIHYDROGEN DIPHOSPHATE

(three-letter code: TZD) (formula:  $\text{C}_{12}\text{H}_{18}\text{N}_4\text{O}_8\text{P}_2\text{S}$ ).



Mol	Chain	Residues	Atoms						ZeroOcc	AltConf
5	A	1	Total	C	N	O	P	S	0	0
			27	12	4	8	2	1		

- Molecule 6 is GLYCEROL (three-letter code: GOL) (formula:  $\text{C}_3\text{H}_8\text{O}_3$ ).



Mol	Chain	Residues	Atoms			ZeroOcc	AltConf
6	B	1	Total	C	O	0	0
			6	3	3		

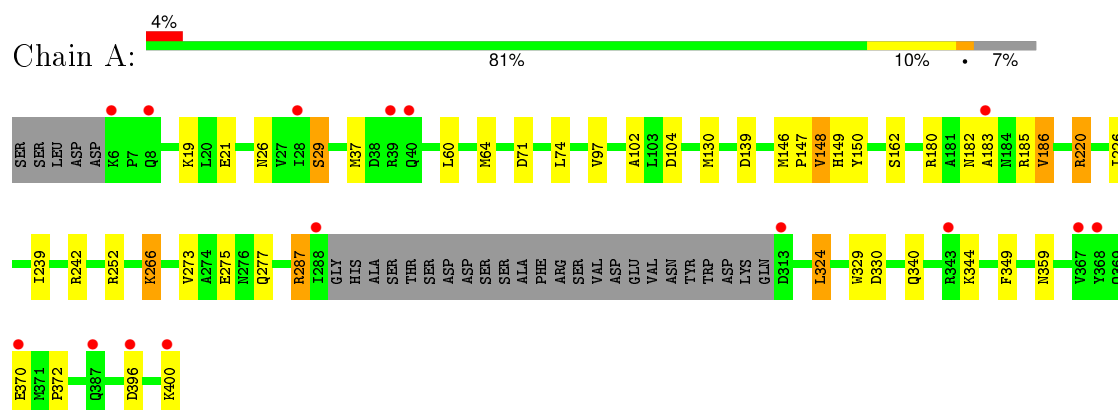
- Molecule 7 is water.

Mol	Chain	Residues	Atoms		ZeroOcc	AltConf
7	A	343	Total 343	O 343	0	0
7	B	271	Total 271	O 271	0	0

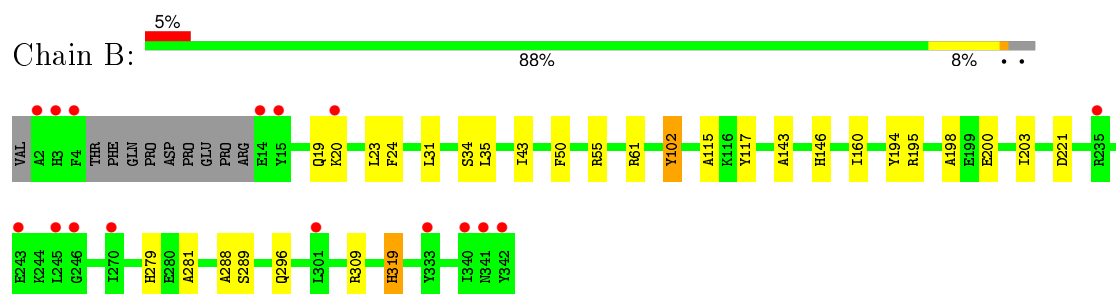
### 3 Residue-property plots

These plots are drawn for all protein, RNA and DNA chains in the entry. The first graphic for a chain summarises the proportions of errors displayed in the second graphic. The second graphic shows the sequence view annotated by issues in geometry and electron density. Residues are color-coded according to the number of geometric quality criteria for which they contain at least one outlier: green = 0, yellow = 1, orange = 2 and red = 3 or more. A red dot above a residue indicates a poor fit to the electron density ( $\text{RSRZ} > 2$ ). Stretches of 2 or more consecutive residues without any outlier are shown as a green connector. Residues present in the sample, but not in the model, are shown in grey.

#### • Molecule 1: 2-OXOISOVALERATE DEHYDROGENASE ALPHA SUBUNIT



#### • Molecule 2: 2-OXOISOVALERATE DEHYDROGENASE BETA SUBUNIT



## 4 Data and refinement statistics

Property	Value	Source
Space group	P 31 2 1	Depositor
Cell constants a, b, c, $\alpha$ , $\beta$ , $\gamma$	145.34Å 145.34Å 69.19Å 90.00° 90.00° 120.00°	Depositor
Resolution (Å)	30.00 – 1.64 35.87 – 1.64	Depositor EDS
% Data completeness (in resolution range)	98.3 (30.00-1.64) 98.3 (35.87-1.64)	Depositor EDS
$R_{merge}$	0.05	Depositor
$R_{sym}$	(Not available)	Depositor
$\langle I/\sigma(I) \rangle$ <sup>1</sup>	2.96 (at 1.64Å)	Xtriage
Refinement program	REFMAC 5.2.0003	Depositor
R, $R_{free}$	0.144 , 0.159 0.161 , 0.176	Depositor DCC
$R_{free}$ test set	1493 reflections (1.51%)	DCC
Wilson B-factor (Å <sup>2</sup> )	14.8	Xtriage
Anisotropy	0.378	Xtriage
Bulk solvent $k_{sol}$ (e/Å <sup>3</sup> ), $B_{sol}$ (Å <sup>2</sup> )	0.38 , 60.2	EDS
Estimated twinning fraction	0.018 for -h,-k,l	Xtriage
L-test for twinning <sup>2</sup>	$\langle  L  \rangle = 0.50$ , $\langle L^2 \rangle = 0.33$	Xtriage
Outliers	0 of 100582 reflections	Xtriage
$F_o, F_c$ correlation	0.96	EDS
Total number of atoms	6535	wwPDB-VP
Average B, all atoms (Å <sup>2</sup> )	15.0	wwPDB-VP

Xtriage's analysis on translational NCS is as follows: *The largest off-origin peak in the Patterson function is 3.37% of the height of the origin peak. No significant pseudotranslation is detected.*

<sup>1</sup>Intensities estimated from amplitudes.

<sup>2</sup>Theoretical values of  $\langle |L| \rangle$ ,  $\langle L^2 \rangle$  for acentric reflections are 0.5, 0.375 respectively for untwinned datasets, and 0.333, 0.2 for perfectly twinned datasets.

## 5 Model quality ⓘ

### 5.1 Standard geometry ⓘ

Bond lengths and bond angles in the following residue types are not validated in this section: GOL, K, MN, TZD

The Z score for a bond length (or angle) is the number of standard deviations the observed value is removed from the expected value. A bond length (or angle) with  $|Z| > 5$  is considered an outlier worth inspection. RMSZ is the root-mean-square of all Z scores of the bond lengths (or angles).

Mol	Chain	Bond lengths		Bond angles	
		RMSZ	$\# Z  > 5$	RMSZ	$\# Z  > 5$
1	A	0.95	0/3264	1.03	10/4407 (0.2%)
2	B	0.95	1/2762 (0.0%)	1.02	4/3749 (0.1%)
All	All	0.95	1/6026 (0.0%)	1.02	14/8156 (0.2%)

All (1) bond length outliers are listed below:

Mol	Chain	Res	Type	Atoms	Z	Observed(Å)	Ideal(Å)
2	B	34	SER	CB-OG	-5.34	1.35	1.42

All (14) bond angle outliers are listed below:

Mol	Chain	Res	Type	Atoms	Z	Observed(°)	Ideal(°)
2	B	61	ARG	NE-CZ-NH1	9.19	124.89	120.30
2	B	61	ARG	NE-CZ-NH2	-8.71	115.94	120.30
1	A	220	ARG	NE-CZ-NH1	7.57	124.09	120.30
1	A	37	MET	CG-SD-CE	-6.31	90.11	100.20
1	A	252	ARG	NE-CZ-NH2	-6.17	117.21	120.30
1	A	104[A]	ASP	CB-CG-OD2	6.06	123.76	118.30
1	A	104[B]	ASP	CB-CG-OD2	6.06	123.76	118.30
1	A	242	ARG	NE-CZ-NH2	-6.06	117.27	120.30
1	A	139	ASP	CB-CG-OD2	5.86	123.58	118.30
2	B	221	ASP	CB-CG-OD2	5.73	123.45	118.30
1	A	330	ASP	CB-CG-OD2	5.68	123.42	118.30
2	B	102	TYR	CB-CG-CD2	-5.66	117.60	121.00
1	A	71	ASP	CB-CG-OD1	5.62	123.36	118.30
1	A	180	ARG	NE-CZ-NH2	-5.39	117.60	120.30

There are no chirality outliers.

There are no planarity outliers.



## 5.2 Too-close contacts ⓘ

In the following table, the Non-H and H(model) columns list the number of non-hydrogen atoms and hydrogen atoms in the chain respectively. The H(added) column lists the number of hydrogen atoms added and optimized by MolProbity. The Clashes column lists the number of clashes within the asymmetric unit, whereas Symm-Clashes lists symmetry related clashes.

Mol	Chain	Non-H	H(model)	H(added)	Clashes	Symm-Clashes
1	A	3190	0	3105	47	0
2	B	2695	0	2649	20	0
3	A	1	0	0	0	0
3	B	1	0	0	0	0
4	A	1	0	0	0	0
5	A	27	0	15	0	0
6	B	6	0	8	0	0
7	A	343	0	0	10	0
7	B	271	0	0	1	0
All	All	6535	0	5777	67	0

The all-atom clashscore is defined as the number of clashes found per 1000 atoms (including hydrogen atoms). The all-atom clashscore for this structure is 6.

All (67) close contacts within the same asymmetric unit are listed below, sorted by their clash magnitude.

Atom-1	Atom-2	Interatomic distance (Å)	Clash overlap (Å)
1:A:186[B]:VAL:CG2	1:A:273[B]:VAL:CG2	2.08	1.30
1:A:186[B]:VAL:CG2	1:A:273[B]:VAL:HG23	1.63	1.26
1:A:266[B]:LYS:HE2	7:A:2242:HOH:O	1.46	1.14
1:A:186[B]:VAL:HG23	1:A:273[B]:VAL:CG2	1.74	1.12
1:A:148[A]:VAL:HG12	7:A:2157:HOH:O	1.66	0.95
1:A:186[B]:VAL:HG21	1:A:273[B]:VAL:HG23	1.47	0.95
1:A:186[B]:VAL:HG22	1:A:273[B]:VAL:CG2	1.98	0.91
2:B:31:LEU:O	2:B:35[B]:LEU:HD23	1.70	0.90
1:A:185:ARG:HG2	7:A:2190:HOH:O	1.74	0.87
1:A:186[B]:VAL:CG2	1:A:273[B]:VAL:HG22	2.05	0.86
1:A:186[B]:VAL:HG22	1:A:273[B]:VAL:HG23	1.57	0.84
1:A:186[B]:VAL:HG23	1:A:273[B]:VAL:HG21	1.61	0.81
1:A:64[B]:MET:SD	1:A:97[B]:VAL:HG21	2.23	0.78
2:B:19:GLN:HB2	2:B:203:ILE:HD11	1.67	0.77
1:A:64[B]:MET:CG	1:A:97[B]:VAL:HG21	2.18	0.73
2:B:102:TYR:OH	2:B:146[B]:HIS:HE1	1.72	0.72
2:B:23[B]:LEU:HB3	2:B:194:TYR:HA	1.72	0.71
1:A:149:HIS:HE1	1:A:162:SER:OG	1.73	0.71

*Continued on next page...*

*Continued from previous page...*

Atom-1	Atom-2	Interatomic distance (Å)	Clash overlap (Å)
2:B:289[B]:SER:OG	2:B:309:ARG:NH1	2.26	0.69
2:B:102:TYR:OH	2:B:146[B]:HIS:CE1	2.47	0.68
2:B:19:GLN:HE21	2:B:203:ILE:CD1	2.08	0.66
2:B:279:HIS:HE1	2:B:288:ALA:H	1.46	0.63
1:A:148[A]:VAL:CG1	7:A:2157:HOH:O	2.33	0.62
2:B:20:LYS:HE2	2:B:198:ALA:HB3	1.80	0.62
1:A:186[B]:VAL:HG22	1:A:273[B]:VAL:HG22	1.69	0.62
1:A:148[A]:VAL:HG12	1:A:148[A]:VAL:O	2.00	0.61
2:B:279:HIS:CE1	2:B:288:ALA:H	2.19	0.61
2:B:19:GLN:HE21	2:B:203:ILE:HD11	1.66	0.60
2:B:55[A]:ARG:HD2	2:B:195:ARG:HH21	1.66	0.60
1:A:146[A]:MET:HG3	1:A:147:PRO:HD2	1.84	0.59
1:A:359:ASN:HD21	1:A:400:LYS:HD2	1.67	0.59
1:A:148[A]:VAL:HG11	7:A:2098:HOH:O	2.02	0.57
1:A:186[B]:VAL:HG23	1:A:273[B]:VAL:HG22	1.71	0.57
1:A:148[A]:VAL:CG1	7:A:2098:HOH:O	2.54	0.56
1:A:324[C]:LEU:HD12	1:A:329:TRP:HB3	1.89	0.55
1:A:64[B]:MET:HG3	1:A:97[B]:VAL:HG11	1.92	0.52
1:A:340:GLN:HE21	1:A:344:LYS:HE2	1.74	0.52
1:A:275:GLU:OE1	1:A:277:GLN:NE2	2.38	0.52
1:A:74:LEU:HD21	1:A:130[A]:MET:SD	2.49	0.52
1:A:359:ASN:ND2	1:A:400:LYS:HD2	2.24	0.52
1:A:400:LYS:HB3	7:A:2335:HOH:O	2.10	0.51
1:A:287:ARG:HD3	7:A:2209:HOH:O	2.10	0.51
2:B:146[B]:HIS:CE1	7:B:2137:HOH:O	2.65	0.50
2:B:19:GLN:HE21	2:B:203:ILE:HD12	1.78	0.48
2:B:35[B]:LEU:HD21	2:B:43:ILE:HD11	1.94	0.48
1:A:64[B]:MET:CG	1:A:97[B]:VAL:HG11	2.43	0.48
1:A:19:LYS:HG3	1:A:21:GLU:OE2	2.14	0.48
1:A:147:PRO:O	1:A:149:HIS:HD2	1.97	0.47
1:A:130[B]:MET:SD	1:A:349:PHE:HA	2.55	0.47
1:A:64[B]:MET:HG3	1:A:97[B]:VAL:HG21	1.97	0.45
1:A:26:ASN:HD21	1:A:29:SER:HB3	1.82	0.44
2:B:20:LYS:HG3	2:B:200:GLU:OE2	2.18	0.44
1:A:149:HIS:CE1	1:A:162:SER:OG	2.62	0.44
1:A:64[B]:MET:SD	1:A:97[B]:VAL:CG2	3.01	0.44
1:A:239:ILE:HD12	1:A:239:ILE:N	2.32	0.44
1:A:182:ASN:O	1:A:183:ALA:HB3	2.18	0.44
2:B:143:ALA:HB2	2:B:319:HIS:HB2	1.99	0.43
1:A:370[A]:GLU:O	1:A:372:PRO:HD3	2.18	0.43
2:B:279:HIS:HD2	2:B:281:ALA:O	2.01	0.43

*Continued on next page...*

Continued from previous page...

Atom-1	Atom-2	Interatomic distance (Å)	Clash overlap (Å)
1:A:60:LEU:O	1:A:64[B]:MET:HG3	2.19	0.42
2:B:115:ALA:HB2	2:B:160:ILE:HG23	2.00	0.42
1:A:148[A]:VAL:HG13	1:A:150:TYR:CE2	2.54	0.42
2:B:19:GLN:NE2	2:B:203:ILE:CD1	2.80	0.42
1:A:239:ILE:N	1:A:239:ILE:CD1	2.83	0.42
1:A:396:ASP:HB2	7:A:2331:HOH:O	2.20	0.42
1:A:277:GLN:HB3	7:A:2252:HOH:O	2.19	0.42
1:A:102:ALA:O	1:A:266[B]:LYS:NZ	2.50	0.41

There are no symmetry-related clashes.

## 5.3 Torsion angles [i](#)

### 5.3.1 Protein backbone [i](#)

In the following table, the Percentiles column shows the percent Ramachandran outliers of the chain as a percentile score with respect to all X-ray entries followed by that with respect to entries of similar resolution.

The Analysed column shows the number of residues for which the backbone conformation was analysed, and the total number of residues.

Mol	Chain	Analysed	Favoured	Allowed	Outliers	Percentiles	
1	A	394/400 (98%)	383 (97%)	8 (2%)	3 (1%)	24	5
2	B	341/342 (100%)	330 (97%)	10 (3%)	1 (0%)	46	23
All	All	735/742 (99%)	713 (97%)	18 (2%)	4 (0%)	39	12

All (4) Ramachandran outliers are listed below:

Mol	Chain	Res	Type
1	A	226	ILE
1	A	148[A]	VAL
1	A	148[B]	VAL
2	B	319	HIS

### 5.3.2 Protein sidechains [i](#)

In the following table, the Percentiles column shows the percent sidechain outliers of the chain as a percentile score with respect to all X-ray entries followed by that with respect to entries of similar resolution.

The Analysed column shows the number of residues for which the sidechain conformation was analysed, and the total number of residues.

Mol	Chain	Analysed	Rotameric	Outliers	Percentiles	
1	A	336/335 (100%)	326 (97%)	10 (3%)	48	17
2	B	292/289 (101%)	287 (98%)	5 (2%)	68	43
All	All	628/624 (101%)	613 (98%)	15 (2%)	68	26

All (15) residues with a non-rotameric sidechain are listed below:

Mol	Chain	Res	Type
1	A	29	SER
1	A	186[A]	VAL
1	A	186[B]	VAL
1	A	220	ARG
1	A	266[A]	LYS
1	A	266[B]	LYS
1	A	287	ARG
1	A	324[A]	LEU
1	A	324[B]	LEU
1	A	324[C]	LEU
2	B	24	PHE
2	B	50	PHE
2	B	117	TYR
2	B	296[A]	GLN
2	B	296[B]	GLN

Some sidechains can be flipped to improve hydrogen bonding and reduce clashes. All (8) such sidechains are listed below:

Mol	Chain	Res	Type
1	A	26	ASN
1	A	149	HIS
1	A	276	ASN
1	A	333	GLN
1	A	397	HIS
2	B	19	GLN
2	B	212	GLN
2	B	279	HIS

### 5.3.3 RNA ⓘ

There are no RNA molecules in this entry.

## 5.4 Non-standard residues in protein, DNA, RNA chains ⓘ

There are no non-standard protein/DNA/RNA residues in this entry.

## 5.5 Carbohydrates ⓘ

There are no carbohydrates in this entry.

## 5.6 Ligand geometry ⓘ

Of 5 ligands modelled in this entry, 3 are monoatomic - leaving 2 for Mogul analysis.

In the following table, the Counts columns list the number of bonds (or angles) for which Mogul statistics could be retrieved, the number of bonds (or angles) that are observed in the model and the number of bonds (or angles) that are defined in the chemical component dictionary. The Link column lists molecule types, if any, to which the group is linked. The Z score for a bond length (or angle) is the number of standard deviations the observed value is removed from the expected value. A bond length (or angle) with  $|Z| > 2$  is considered an outlier worth inspection. RMSZ is the root-mean-square of all Z scores of the bond lengths (or angles).

Mol	Type	Chain	Res	Link	Bond lengths			Bond angles		
					Counts	RMSZ	$\# Z  > 2$	Counts	RMSZ	$\# Z  > 2$
5	TZD	A	601	4	22,28,28	1.05	0	31,42,42	1.51	5 (16%)
6	GOL	B	701	-	5,5,5	0.48	0	5,5,5	0.62	0

In the following table, the Chirals column lists the number of chiral outliers, the number of chiral centers analysed, the number of these observed in the model and the number defined in the chemical component dictionary. Similar counts are reported in the Torsion and Rings columns. '-' means no outliers of that kind were identified.

Mol	Type	Chain	Res	Link	Chirals	Torsions	Rings
5	TZD	A	601	4	-	0/16/17/17	0/2/2/2
6	GOL	B	701	-	-	0/4/4/4	0/0/0/0

There are no bond length outliers.

All (5) bond angle outliers are listed below:

Mol	Chain	Res	Type	Atoms	Z	Observed(°)	Ideal(°)
5	A	601	TZD	N1'-C2'-N3'	-3.24	119.60	125.60
5	A	601	TZD	C4A-C4-N3	-2.53	119.48	122.82
5	A	601	TZD	C2A-C2'-N1'	2.30	119.79	117.03
5	A	601	TZD	C5-C4-N3	2.56	113.78	107.83
5	A	601	TZD	C6'-N1'-C2'	3.59	122.05	115.77

There are no chirality outliers.

There are no torsion outliers.

There are no ring outliers.

No monomer is involved in short contacts.

## 5.7 Other polymers

There are no such residues in this entry.

## 5.8 Polymer linkage issues

There are no chain breaks in this entry.

## 6 Fit of model and data

### 6.1 Protein, DNA and RNA chains

In the following table, the column labelled ‘#RSRZ> 2’ contains the number (and percentage) of RSRZ outliers, followed by percent RSRZ outliers for the chain as percentile scores relative to all X-ray entries and entries of similar resolution. The OWAB column contains the minimum, median, 95<sup>th</sup> percentile and maximum values of the occupancy-weighted average B-factor per residue. The column labelled ‘Q< 0.9’ lists the number of (and percentage) of residues with an average occupancy less than 0.9.

Mol	Chain	Analysed	<RSRZ>	#RSRZ>2	OWAB(Å <sup>2</sup> )	Q<0.9
1	A	371/400 (92%)	0.15	15 (4%) 42 38	7, 12, 29, 39	0
2	B	332/342 (97%)	-0.12	16 (4%) 34 30	7, 13, 24, 48	0
All	All	703/742 (94%)	0.02	31 (4%) 38 35	7, 12, 26, 48	0

All (31) RSRZ outliers are listed below:

Mol	Chain	Res	Type	RSRZ
2	B	2	ALA	7.8
1	A	288	ILE	6.2
2	B	4	PHE	5.4
2	B	301	LEU	4.7
2	B	3	HIS	4.6
1	A	183	ALA	4.3
2	B	15	TYR	4.0
2	B	340	ILE	3.9
1	A	8	GLN	3.8
1	A	28	ILE	3.4
2	B	342	TYR	3.2
1	A	400	LYS	3.1
1	A	6	LYS	3.0
2	B	246	GLY	2.9
1	A	396	ASP	2.9
2	B	333	TYR	2.8
1	A	387	GLN	2.7
2	B	270	ILE	2.7
1	A	370[A]	GLU	2.7
1	A	367	VAL	2.7
2	B	245	LEU	2.6
1	A	40	GLN	2.6
2	B	341	ASN	2.3
1	A	343	ARG	2.3

*Continued on next page...*

*Continued from previous page...*

Mol	Chain	Res	Type	RSRZ
1	A	39	ARG	2.2
1	A	368	TYR	2.2
1	A	313	ASP	2.2
2	B	14	GLU	2.2
2	B	243	GLU	2.1
2	B	20	LYS	2.1
2	B	235	ARG	2.0

## 6.2 Non-standard residues in protein, DNA, RNA chains [i](#)

There are no non-standard protein/DNA/RNA residues in this entry.

## 6.3 Carbohydrates [i](#)

There are no carbohydrates in this entry.

## 6.4 Ligands [i](#)

In the following table, the Atoms column lists the number of modelled atoms in the group and the number defined in the chemical component dictionary. LLDF column lists the quality of electron density of the group with respect to its neighbouring residues in protein, DNA or RNA chains. The B-factors column lists the minimum, median, 95<sup>th</sup> percentile and maximum values of B factors of atoms in the group. The column labelled 'Q< 0.9' lists the number of atoms with occupancy less than 0.9.

Mol	Type	Chain	Res	Atoms	RSCC	RSR	LLDF	B-factors(Å <sup>2</sup> )	Q<0.9
5	TZD	A	601	27/27	0.98	0.10	0.76	2,2,4,6	0
6	GOL	B	701	6/6	0.95	0.07	-0.41	10,12,14,15	0
3	K	B	502	1/1	0.99	0.02	-2.07	9,9,9,9	0
4	MN	A	503	1/1	1.00	0.01	-3.90	7,7,7,7	0
3	K	A	501	1/1	1.00	0.01	-4.82	6,6,6,6	0

## 6.5 Other polymers [i](#)

There are no such residues in this entry.