



wwPDB NMR Structure Validation Summary Report ⓘ

Apr 26, 2016 – 02:19 PM BST

PDB ID : 1BM6
Title : SOLUTION STRUCTURE OF THE CATALYTIC DOMAIN OF HUMAN STROMELYSIN-1 COMPLEXED TO A POTENT NON-PEPTIDIC INHIBITOR, NMR, 20 STRUCTURES
Authors : Li, Y.; Zhang, X.; Melton, R.; Ganu, V.; Gonnella, N.C.
Deposited on : 1998-07-29

This is a wwPDB NMR Structure Validation Summary Report for a publicly released PDB entry.
We welcome your comments at validation@mail.wwpdb.org
A user guide is available at
<http://wwpdb.org/validation/2016/NMRValidationReportHelp>
with specific help available everywhere you see the ⓘ symbol.

The following versions of software and data (see [references ⓘ](#)) were used in the production of this report:

Cyrange : Kirchner and Güntert (2011)
NmrClust : Kelley et al. (1996)
MolProbity : 4.02b-467
Mogul : 1.7.1 (RC1), CSD as537be (2016)
Percentile statistics : 20151230.v01 (using entries in the PDB archive December 30th 2015)
RCI : v_1n_11_5_13_A (Berjanski et al., 2005)
PANAV : Wang et al. (2010)
ShiftChecker : rb-20027457
Ideal geometry (proteins) : Engh & Huber (2001)
Ideal geometry (DNA, RNA) : Parkinson et al. (1996)
Validation Pipeline (wwPDB-VP) : rb-20027457

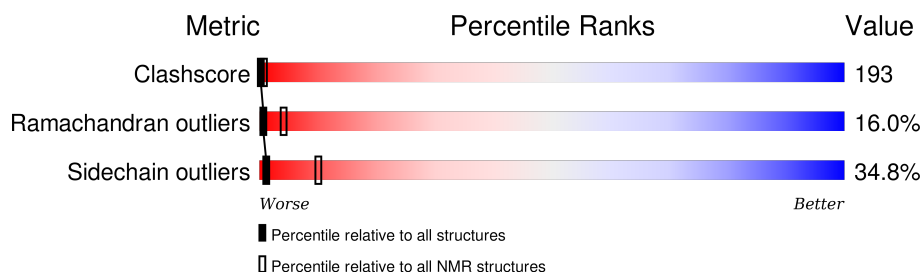
1 Overall quality at a glance

The following experimental techniques were used to determine the structure:

SOLUTION NMR

The overall completeness of chemical shifts assignment is 44%.

Percentile scores (ranging between 0-100) for global validation metrics of the entry are shown in the following graphic. The table shows the number of entries on which the scores are based.



Metric	Whole archive (#Entries)	NMR archive (#Entries)
Clashscore	114402	11133
Ramachandran outliers	111179	9975
Sidechain outliers	111093	9958

The table below summarises the geometric issues observed across the polymeric chains and their fit to the experimental data. The red, orange, yellow and green segments indicate the fraction of residues that contain outliers for ≥ 3 , 2, 1 and 0 types of geometric quality criteria. A cyan segment indicates the fraction of residues that are not part of the well-defined cores, and a grey segment represents the fraction of residues that are not modelled. The numeric value for each fraction is indicated below the corresponding segment, with a dot representing fractions $\leq 5\%$

Mol	Chain	Length	Quality of chain
1	A	173	

2 Ensemble composition and analysis

This entry contains 20 models. Model 15 is the overall representative, medoid model (most similar to other models).

The following residues are included in the computation of the global validation metrics.

Well-defined (core) protein residues			
Well-defined core	Residue range (total)	Backbone RMSD (Å)	Medoid model
1	A:91-A:149, A:156-A:246 (150)	0.33	15

Ill-defined regions of proteins are excluded from the global statistics.

Ligands and non-protein polymers are included in the analysis.

The models can be grouped into 3 clusters. No single-model clusters were found.

Cluster number	Models
1	1, 2, 3, 4, 5, 8, 9, 11, 12, 14, 15, 16, 18, 19, 20
2	6, 7, 10
3	13, 17

3 Entry composition [i](#)

There are 5 unique types of molecules in this entry. The entry contains 2728 atoms, of which 1321 are hydrogens and 0 are deuteriums.

- Molecule 1 is a protein called STROMELYSIN-1.

Mol	Chain	Residues	Atoms						Trace
1	A	173	Total	C	H	N	O	S	0
			2674	882	1298	228	264	2	

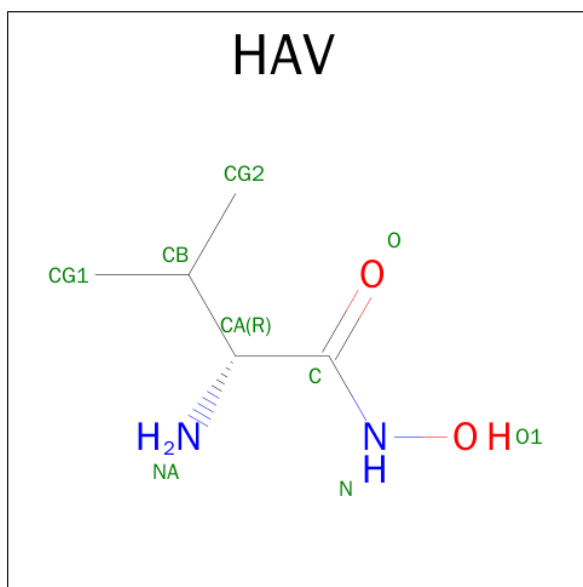
- Molecule 2 is ZINC ION (three-letter code: ZN) (formula: Zn).

Mol	Chain	Residues	Atoms	
2	A	2	Total	Zn
			2	2

- Molecule 3 is CALCIUM ION (three-letter code: CA) (formula: Ca).

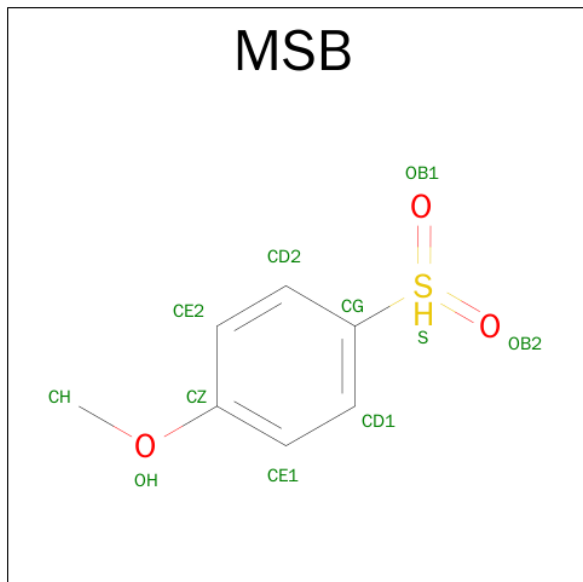
Mol	Chain	Residues	Atoms	
3	A	2	Total	Ca
			2	2

- Molecule 4 is HYDROXYAMINOVALINE (three-letter code: HAV, 3MP) (formula: C₅H₁₂N₂O₂, C₆H₇N).



Mol	Chain	Residues	Atoms				
4	A	2	Total	C	H	N	O
			32	11	16	3	2

- Molecule 5 is 1-METHYLOXY-4-SULFONE-BENZENE (three-letter code: MSB) (formula: $C_7H_8O_3S$).



Mol	Chain	Residues	Atoms				
			Total	C	H	O	S
5	A	1	18	7	7	3	1

5 Refinement protocol and experimental data overview

The models were refined using the following method: *SIMULATED ANNEALING*.

Of the 50 calculated structures, 20 were deposited, based on the following criterion: *LEAST RESTRAINT VIOLATION*, *ENERGY MINIMIZATION*.

The following table shows the software used for structure solution, optimisation and refinement.

Software name	Classification	Version
X-PLOR	refinement	3.1
BRUKER XWINNMR	structure solution	XWINNMR
MSI NMRCOMPASS	structure solution	NMRCOMPASS
FELIX	structure solution	
NMRPIPE	structure solution	

The following table shows chemical shift validation statistics as aggregates over all chemical shift files. Detailed validation can be found in section 7 of this report.

Chemical shift file(s)	BMRB entry 4173
Number of chemical shift lists	1
Total number of shifts	1077
Number of shifts mapped to atoms	1077
Number of unparsed shifts	0
Number of shifts with mapping errors	0
Number of shifts with mapping warnings	0
Assignment completeness (well-defined parts)	44%

No validations of the models with respect to experimental NMR restraints is performed at this time.

6 Model quality

6.1 Standard geometry

Bond lengths and bond angles in the following residue types are not validated in this section: MSB, ZN, CA, HAV, 3MP

There are no covalent bond-length or bond-angle outliers.

There are no bond-length outliers.

There are no bond-angle outliers.

There are no chirality outliers.

There are no planarity outliers.

6.2 Too-close contacts

In the following table, the Non-H and H(model) columns list the number of non-hydrogen atoms and hydrogen atoms in each chain respectively. The H(added) column lists the number of hydrogen atoms added and optimized by MolProbity. The Clashes column lists the number of clashes averaged over the ensemble.

Mol	Chain	Non-H	H(model)	H(added)	Clashes
1	A	1193	1139	1139	458±18
4	A	16	16	15	8±4
5	A	11	7	7	16±2
All	All	24480	23240	23207	9205

The all-atom clashscore is defined as the number of clashes found per 1000 atoms (including hydrogen atoms). The all-atom clashscore for this structure is 193.

5 of 2127 unique clashes are listed below, sorted by their clash magnitude.

Atom-1	Atom-2	Clash(Å)	Distance(Å)	Models	
				Worst	Total
1:A:108:LEU:HD13	1:A:195:LEU:HD22	1.11	1.20	3	4
1:A:97:LEU:HD13	1:A:132:PHE:CZ	1.09	1.82	13	3
1:A:135:LEU:HD21	1:A:140:ALA:HB2	1.08	1.20	8	10
1:A:164:LEU:HD21	1:A:193:THR:HG21	1.05	1.28	4	4
1:A:147:ALA:HB3	1:A:179:HIS:CE1	1.05	1.85	3	16

6.3 Torsion angles [i](#)

6.3.1 Protein backbone [i](#)

In the following table, the Percentiles column shows the percent Ramachandran outliers of the chain as a percentile score with respect to all PDB entries followed by that with respect to all NMR entries. The Analysed column shows the number of residues for which the backbone conformation was analysed and the total number of residues.

Mol	Chain	Analysed	Favoured	Allowed	Outliers	Percentiles	
1	A	150/173 (87%)	92±3 (61±2%)	34±4 (23±3%)	24±3 (16±2%)	1	4
All	All	3000/3460 (87%)	1831 (61%)	689 (23%)	480 (16%)	1	4

5 of 45 unique Ramachandran outliers are listed below. They are sorted by the frequency of occurrence in the ensemble.

Mol	Chain	Res	Type	Models (Total)
1	A	148	VAL	20
1	A	94	LYS	20
1	A	195	LEU	20
1	A	220	TYR	20
1	A	226	LEU	20

6.3.2 Protein sidechains [i](#)

In the following table, the Percentiles column shows the percent sidechain outliers of the chain as a percentile score with respect to all PDB entries followed by that with respect to all NMR entries. The Analysed column shows the number of residues for which the sidechain conformation was analysed and the total number of residues.

Mol	Chain	Analysed	Rotameric	Outliers	Percentiles	
1	A	127/147 (86%)	83±4 (65±3%)	44±4 (35±3%)	1	10
All	All	2540/2940 (86%)	1656 (65%)	884 (35%)	1	10

5 of 99 unique residues with a non-rotameric sidechain are listed below. They are sorted by the frequency of occurrence in the ensemble.

Mol	Chain	Res	Type	Models (Total)
1	A	214	ASN	20
1	A	94	LYS	20
1	A	196	PHE	20
1	A	205	HIS	20
1	A	135	LEU	20

6.3.3 RNA ⓘ

There are no RNA molecules in this entry.

6.4 Non-standard residues in protein, DNA, RNA chains ⓘ

There are no non-standard protein/DNA/RNA residues in this entry.

6.5 Carbohydrates ⓘ

There are no carbohydrates in this entry.

6.6 Ligand geometry ⓘ

Of 7 ligands modelled in this entry, 4 are monoatomic - leaving 3 for Mogul analysis.

In the following table, the Counts columns list the number of bonds for which Mogul statistics could be retrieved, the number of bonds that are observed in the model and the number of bonds that are defined in the chemical component dictionary. The Link column lists molecule types, if any, to which the group is linked. The Z score for a bond length is the number of standard deviations the observed value is removed from the expected value. A bond length with $|Z| > 2$ is considered an outlier worth inspection. RMSZ is the average root-mean-square of all Z scores of the bond lengths.

Mol	Type	Chain	Res	Link	Bond lengths		
					Counts	RMSZ	#Z>2
4	HAV	A	1	2,5,4	7,8,8	0.78±0.04	0±0 (0±0%)
4	3MP	A	2	4	7,7,7	0.48±0.01	0±0 (0±0%)
5	MSB	A	3	4	9,11,11	1.04±0.02	0±0 (0±0%)

In the following table, the Counts columns list the number of angles for which Mogul statistics could be retrieved, the number of angles that are observed in the model and the number of angles that are defined in the chemical component dictionary. The Link column lists molecule types, if any, to which the group is linked. The Z score for a bond angle is the number of standard deviations the observed value is removed from the expected value. A bond angle with $|Z| > 2$ is considered an outlier worth inspection. RMSZ is the average root-mean-square of all Z scores of the bond angles.

Mol	Type	Chain	Res	Link	Bond angles		
					Counts	RMSZ	#Z>2
4	HAV	A	1	2,5,4	7,10,10	0.64±0.03	0±0 (0±0%)
4	3MP	A	2	4	8,8,8	0.50±0.01	0±0 (0±0%)
5	MSB	A	3	4	11,14,14	0.43±0.03	0±0 (0±0%)

In the following table, the Chirals column lists the number of chiral outliers, the number of chiral centers analysed, the number of these observed in the model and the number defined in the chemical component dictionary. Similar counts are reported in the Torsion and Rings columns. '-' means no outliers of that kind were identified.

Mol	Type	Chain	Res	Link	Chirals	Torsions	Rings
4	HAV	A	1	2,5,4	-	0±0,10,10,10	0±0,0,0,0
4	3MP	A	2	4	-	0±0,0,0,0	0±0,1,1,1
5	MSB	A	3	4	-	0±0,6,6,6	0±0,1,1,1

There are no bond-length outliers.

There are no bond-angle outliers.

There are no chirality outliers.

There are no torsion outliers.

There are no ring outliers.

6.7 Other polymers [i](#)

There are no such molecules in this entry.

6.8 Polymer linkage issues [i](#)

There are no chain breaks in this entry.

7 Chemical shift validation

The completeness of assignment taking into account all chemical shift lists is 44% for the well-defined parts and 42% for the entire structure.

7.1 Chemical shift list 1

File name: BMRB entry 4173

Chemical shift list name: *assigned_chem_shift_list_1*

7.1.1 Bookkeeping

The following table shows the results of parsing the chemical shift list and reports the number of nuclei with statistically unusual chemical shifts.

Total number of shifts	1077
Number of shifts mapped to atoms	1077
Number of unparsed shifts	0
Number of shifts with mapping errors	0
Number of shifts with mapping warnings	0
Number of shift outliers (ShiftChecker)	6

7.1.2 Chemical shift referencing

The following table shows the suggested chemical shift referencing corrections.

Nucleus	# values	Correction \pm precision, ppm	Suggested action
$^{13}\text{C}_\alpha$	0	—	—
$^{13}\text{C}_\beta$	0	—	—
$^{13}\text{C}'$	0	—	—
^{15}N	151	-0.23 ± 0.46	None needed (< 0.5 ppm)

7.1.3 Completeness of resonance assignments

The following table shows the completeness of the chemical shift assignments for the well-defined regions of the structure. The overall completeness is 44%, i.e. 807 atoms were assigned a chemical shift out of a possible 1817. 0 out of 24 assigned methyl groups (LEU and VAL) were assigned stereospecifically.

	Total	^1H	^{13}C	^{15}N
Backbone	423/734 (58%)	286/292 (98%)	0/300 (0%)	137/142 (96%)
Sidechain	362/879 (41%)	362/512 (71%)	0/334 (0%)	0/33 (0%)

Continued on next page...

Continued from previous page...

	Total	¹ H	¹³ C	¹⁵ N
Aromatic	22/204 (11%)	22/109 (20%)	0/85 (0%)	0/10 (0%)
Overall	807/1817 (44%)	670/913 (73%)	0/719 (0%)	137/185 (74%)

7.1.4 Statistically unusual chemical shifts ⓘ

The following table lists the statistically unusual chemical shifts. These are statistical measures, and large deviations from the mean do not necessarily imply incorrect assignments. Molecules containing paramagnetic centres or hemes are expected to give rise to anomalous chemical shifts.

Mol	Chain	Res	Type	Atom	Shift, ppm	Expected range, ppm	Z-score
1	A	181	ASP	HB3	0.65	4.07 – 1.27	-7.2
1	A	241	GLY	HA3	1.41	5.80 – 2.00	-6.6
1	A	169	ALA	HB3	0.04	2.61 – 0.11	-5.3
1	A	169	ALA	HB1	0.04	2.61 – 0.11	-5.3
1	A	169	ALA	HB2	0.04	2.61 – 0.11	-5.3
1	A	218	LEU	H	11.58	11.47 – 4.97	5.2

7.1.5 Random Coil Index (RCI) plots ⓘ

The image below reports *random coil index* values for the protein chains in the structure. The height of each bar gives a probability of a given residue to be disordered, as predicted from the available chemical shifts and the amino acid sequence. A value above 0.2 is an indication of significant predicted disorder. The colour of the bar shows whether the residue is in the well-defined core (black) or in the ill-defined residue ranges (cyan), as described in section 2 on ensemble composition.

Random coil index (RCI) for chain A:

