



# Full wwPDB X-ray Structure Validation Report ⓘ

Feb 1, 2016 – 07:39 AM GMT

PDB ID : 3BNX  
Title : Crystal structure of Aristolochene synthase complexed with farnesyl diphosphate  
Authors : Shishova, E.Y.; Christianson, D.W.  
Deposited on : 2007-12-14  
Resolution : 2.10 Å(reported)

This is a Full wwPDB X-ray Structure Validation Report for a publicly released PDB entry.  
We welcome your comments at [validation@mail.wwpdb.org](mailto:validation@mail.wwpdb.org)  
A user guide is available at  
<http://wwpdb.org/validation/2016/XrayValidationReportHelp>  
with specific help available everywhere you see the ⓘ symbol.

---

The following versions of software and data (see [references ⓘ](#)) were used in the production of this report:

MolProbity : 4.02b-467  
Mogul : 1.7 (RC4), CSD as536be (2015)  
Xtriage (Phenix) : 1.9-1692  
EDS : rb-20026688  
Percentile statistics : 20151230.v01 (using entries in the PDB archive December 30th 2015)  
Refmac : 5.8.0135  
CCP4 : 6.5.0  
Ideal geometry (proteins) : Engh & Huber (2001)  
Ideal geometry (DNA, RNA) : Parkinson et al. (1996)  
Validation Pipeline (wwPDB-VP) : trunk26865

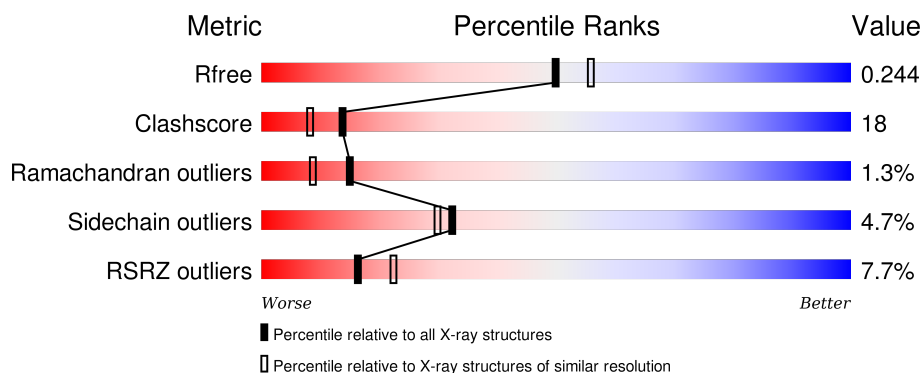
# 1 Overall quality at a glance

The following experimental techniques were used to determine the structure:

## *X-RAY DIFFRACTION*

The reported resolution of this entry is 2.10 Å.

Percentile scores (ranging between 0-100) for global validation metrics of the entry are shown in the following graphic. The table shows the number of entries on which the scores are based.



Metric	Whole archive (#Entries)	Similar resolution (#Entries, resolution range(Å))
$R_{free}$	91344	3939 (2.10-2.10)
Clashscore	102246	4460 (2.10-2.10)
Ramachandran outliers	100387	4413 (2.10-2.10)
Sidechain outliers	100360	4414 (2.10-2.10)
RSRZ outliers	91569	3948 (2.10-2.10)

The table below summarises the geometric issues observed across the polymeric chains and their fit to the electron density. The red, orange, yellow and green segments on the lower bar indicate the fraction of residues that contain outliers for  $\geq 3$ , 2, 1 and 0 types of geometric quality criteria. A grey segment represents the fraction of residues that are not modelled. The numeric value for each fraction is indicated below the corresponding segment, with a dot representing fractions  $\leq 5\%$ . The upper red bar (where present) indicates the fraction of residues that have poor fit to the electron density. The numeric value is given above the bar.

Mol	Chain	Length	Quality of chain
1	A	320	<div> <div>4%</div> <div>69%</div> <div>22%</div> <div>8%</div> </div>
1	B	320	<div> <div>5%</div> <div>60%</div> <div>32%</div> <div>7%</div> </div>
1	C	320	<div> <div>8%</div> <div>61%</div> <div>28%</div> <div>8%</div> </div>
1	D	320	<div> <div>12%</div> <div>54%</div> <div>33%</div> <div>9%</div> </div>

The following table lists non-polymeric compounds, carbohydrate monomers and non-standard

residues in protein, DNA, RNA chains that are outliers for geometric or electron-density-fit criteria:

Mol	Type	Chain	Res	Chirality	Geometry	Clashes	Electron density
3	BME	A	1273	-	-	-	X
3	BME	B	1271	-	-	X	X
3	BME	C	1270	-	-	X	X

## 2 Entry composition [i](#)

There are 7 unique types of molecules in this entry. The entry contains 9964 atoms, of which 0 are hydrogens and 0 are deuteriums.

In the tables below, the ZeroOcc column contains the number of atoms modelled with zero occupancy, the AltConf column contains the number of residues with at least one atom in alternate conformation and the Trace column contains the number of residues modelled with at most 2 atoms.

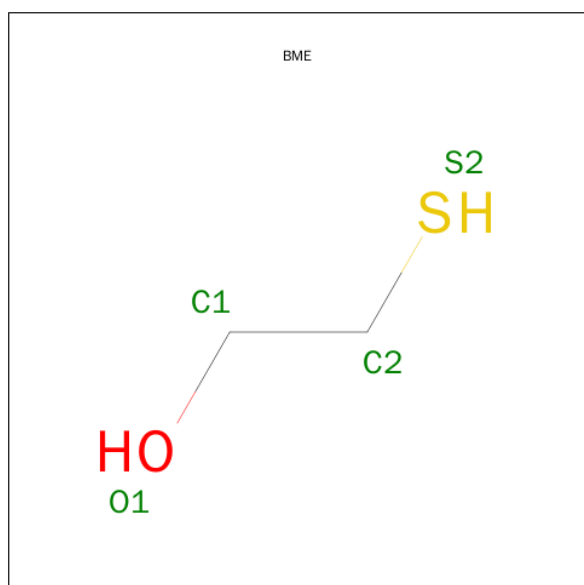
- Molecule 1 is a protein called Aristolochene synthase.

Mol	Chain	Residues	Atoms					ZeroOcc	AltConf	Trace
1	A	296	Total	C	N	O	S	0	0	0
			2398	1532	404	447	15			
1	B	298	Total	C	N	O	S	0	0	0
			2415	1544	407	449	15			
1	C	295	Total	C	N	O	S	0	0	0
			2392	1529	403	445	15			
1	D	290	Total	C	N	O	S	0	0	0
			2349	1501	395	438	15			

- Molecule 2 is MAGNESIUM ION (three-letter code: MG) (formula: Mg).

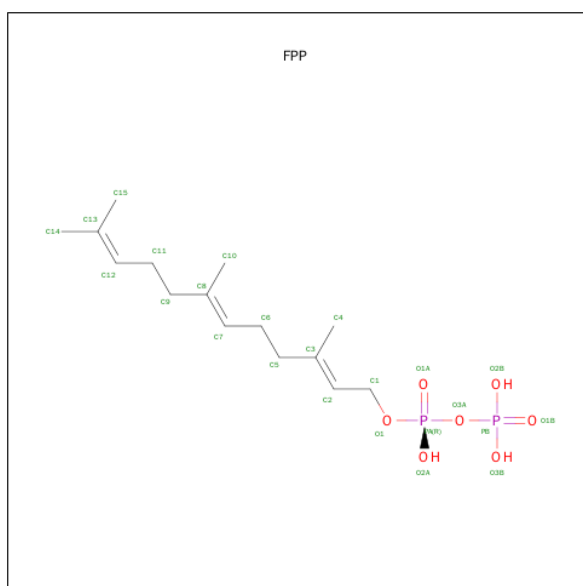
Mol	Chain	Residues	Atoms		ZeroOcc	AltConf
2	D	1	Total	Mg	0	0
			1	1		

- Molecule 3 is BETA-MERCAPTOETHANOL (three-letter code: BME) (formula: C<sub>2</sub>H<sub>6</sub>OS).



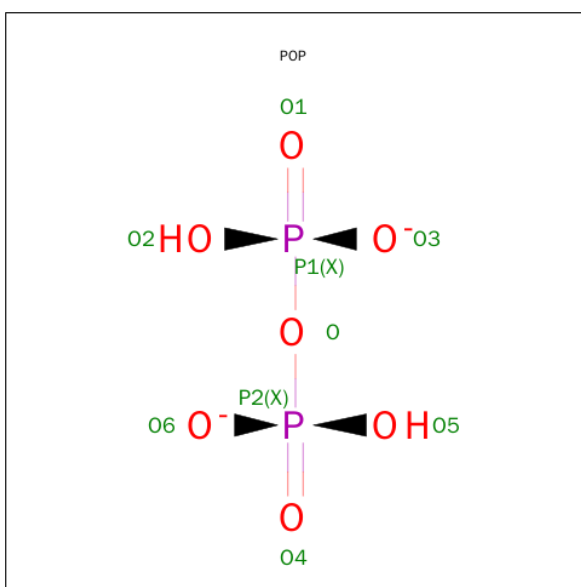
Mol	Chain	Residues	Atoms				ZeroOcc	AltConf
3	A	1	Total	C	O	S	0	0
			4	2	1	1		
3	B	1	Total	C	O	S	0	0
			4	2	1	1		
3	C	1	Total	C	O	S	0	0
			4	2	1	1		
3	D	1	Total	C	O	S	0	0
			4	2	1	1		
3	D	1	Total	C	O	S	0	0
			4	2	1	1		

- Molecule 4 is FARNESYL DIPHOSPHATE (three-letter code: FPP) (formula:  $C_{15}H_{28}O_7P_2$ ).



Mol	Chain	Residues	Atoms				ZeroOcc	AltConf
4	A	1	Total	C	O	P	0	0
			24	15	7	2		
4	B	1	Total	C	O	P	0	0
			24	15	7	2		
4	C	1	Total	C	O	P	0	0
			24	15	7	2		

- Molecule 5 is PYROPHOSPHATE 2- (three-letter code: POP) (formula:  $H_2O_7P_2$ ).



Mol	Chain	Residues	Atoms			ZeroOcc	AltConf
5	D	1	Total	O	P	0	0
			9	7	2		

- Molecule 6 is GLYCEROL (three-letter code: GOL) (formula: C<sub>3</sub>H<sub>8</sub>O<sub>3</sub>).



Mol	Chain	Residues	Atoms			ZeroOcc	AltConf
6	C	1	Total	C	O	0	0
			6	3	3		

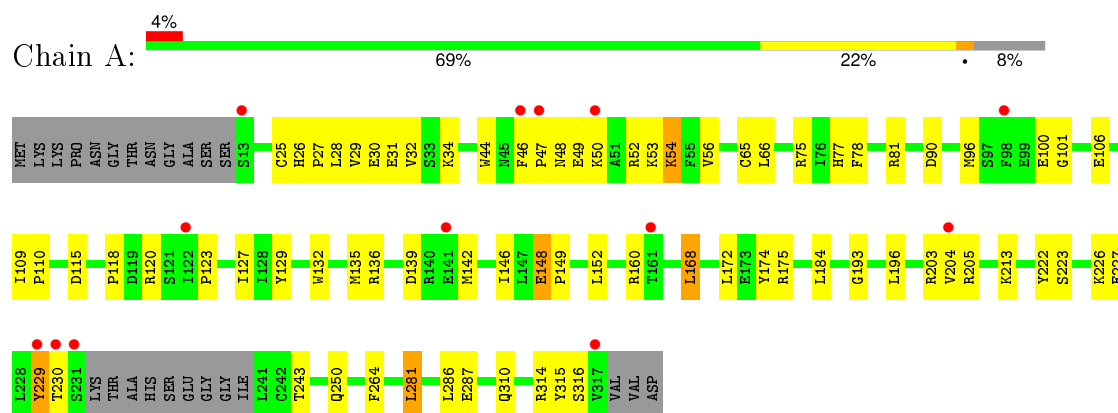
- Molecule 7 is water.

Mol	Chain	Residues	Atoms		ZeroOcc	AltConf
7	A	78	Total 78	O 78	0	0
7	B	85	Total 85	O 85	0	0
7	C	71	Total 71	O 71	0	0
7	D	68	Total 68	O 68	0	0

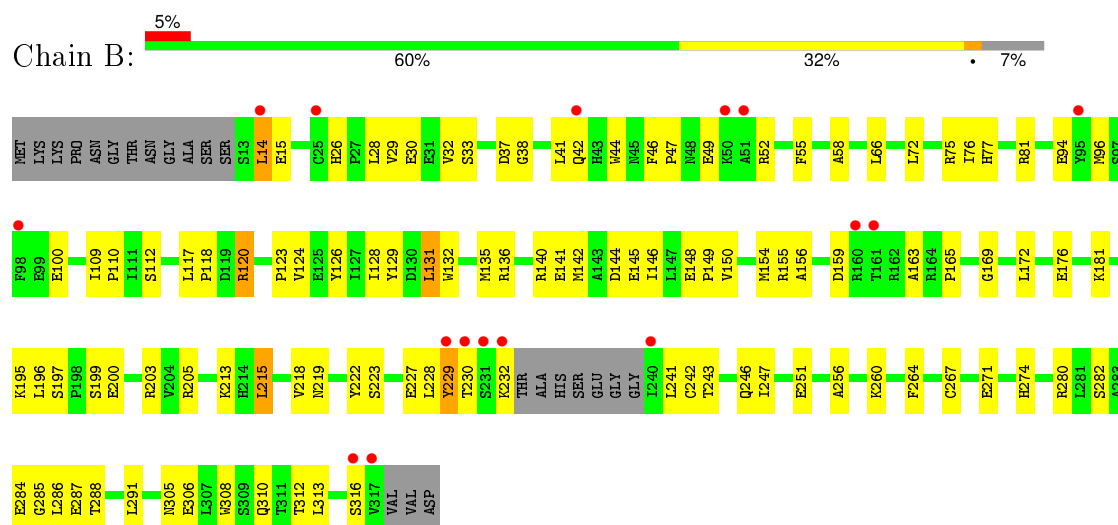
### 3 Residue-property plots

These plots are drawn for all protein, RNA and DNA chains in the entry. The first graphic for a chain summarises the proportions of errors displayed in the second graphic. The second graphic shows the sequence view annotated by issues in geometry and electron density. Residues are color-coded according to the number of geometric quality criteria for which they contain at least one outlier: green = 0, yellow = 1, orange = 2 and red = 3 or more. A red dot above a residue indicates a poor fit to the electron density ( $RSRZ > 2$ ). Stretches of 2 or more consecutive residues without any outlier are shown as a green connector. Residues present in the sample, but not in the model, are shown in grey.

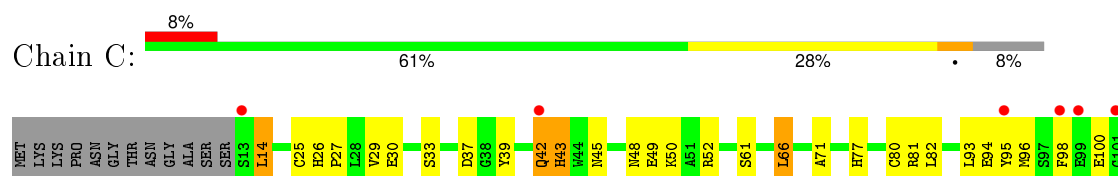
#### • Molecule 1: Aristolochene synthase



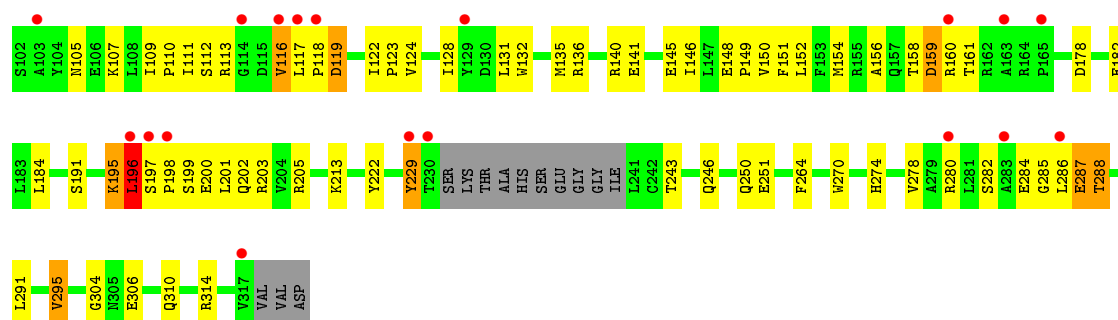
#### • Molecule 1: Aristolochene synthase



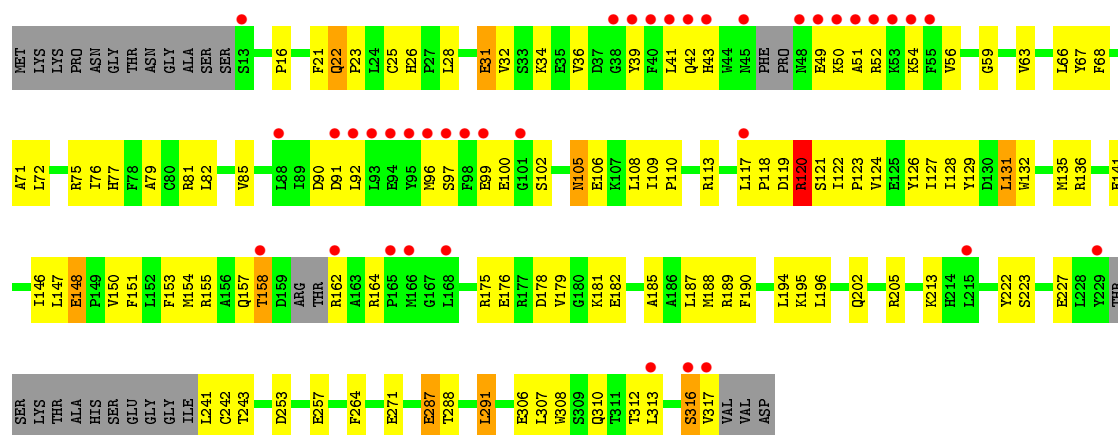
#### • Molecule 1: Aristolochene synthase







• Molecule 1: Aristolochene synthase



## 4 Data and refinement statistics

Property	Value	Source
Space group	P 1 21 1	Depositor
Cell constants a, b, c, $\alpha$ , $\beta$ , $\gamma$	61.89 Å 147.37 Å 84.21 Å 90.00° 97.72° 90.00°	Depositor
Resolution (Å)	50.00 – 2.10 46.53 – 2.10	Depositor EDS
% Data completeness (in resolution range)	(Not available) (50.00-2.10) 91.9 (46.53-2.10)	Depositor EDS
$R_{merge}$	0.10	Depositor
$R_{sym}$	(Not available)	Depositor
$\langle I/\sigma(I) \rangle$ <sup>1</sup>	3.06 (at 2.10 Å)	Xtriage
Refinement program	CNS 1.1	Depositor
R, $R_{free}$	0.240 , 0.278 0.245 , 0.244	Depositor DCC
$R_{free}$ test set	4060 reflections (5.05%)	DCC
Wilson B-factor (Å <sup>2</sup> )	37.5	Xtriage
Anisotropy	0.287	Xtriage
Bulk solvent $k_{sol}$ (e/Å <sup>3</sup> ), $B_{sol}$ (Å <sup>2</sup> )	0.37 , 56.0	EDS
Estimated twinning fraction	No twinning to report.	Xtriage
L-test for twinning <sup>2</sup>	$\langle  L  \rangle = 0.49$ , $\langle L^2 \rangle = 0.32$	Xtriage
Outliers	0 of 80431 reflections	Xtriage
$F_o, F_c$ correlation	0.94	EDS
Total number of atoms	9964	wwPDB-VP
Average B, all atoms (Å <sup>2</sup> )	45.0	wwPDB-VP

Xtriage's analysis on translational NCS is as follows: *The largest off-origin peak in the Patterson function is 4.25% of the height of the origin peak. No significant pseudotranslation is detected.*

<sup>1</sup>Intensities estimated from amplitudes.

<sup>2</sup>Theoretical values of  $\langle |L| \rangle$ ,  $\langle L^2 \rangle$  for acentric reflections are 0.5, 0.375 respectively for untwinned datasets, and 0.333, 0.2 for perfectly twinned datasets.

## 5 Model quality [i](#)

### 5.1 Standard geometry [i](#)

Bond lengths and bond angles in the following residue types are not validated in this section: GOL, MG, FPP, POP, BME

The Z score for a bond length (or angle) is the number of standard deviations the observed value is removed from the expected value. A bond length (or angle) with  $|Z| > 5$  is considered an outlier worth inspection. RMSZ is the root-mean-square of all Z scores of the bond lengths (or angles).

Mol	Chain	Bond lengths		Bond angles	
		RMSZ	# Z  >5	RMSZ	# Z  >5
1	A	0.37	0/2451	0.54	0/3317
1	B	0.37	0/2468	0.53	0/3339
1	C	0.37	0/2445	0.56	1/3309 (0.0%)
1	D	0.34	0/2398	0.53	0/3241
All	All	0.36	0/9762	0.54	1/13206 (0.0%)

There are no bond length outliers.

All (1) bond angle outliers are listed below:

Mol	Chain	Res	Type	Atoms	Z	Observed(°)	Ideal(°)
1	C	201	LEU	N-CA-C	-5.04	97.39	111.00

There are no chirality outliers.

There are no planarity outliers.

### 5.2 Too-close contacts [i](#)

In the following table, the Non-H and H(model) columns list the number of non-hydrogen atoms and hydrogen atoms in the chain respectively. The H(added) column lists the number of hydrogen atoms added and optimized by MolProbity. The Clashes column lists the number of clashes within the asymmetric unit, whereas Symm-Clashes lists symmetry related clashes.

Mol	Chain	Non-H	H(model)	H(added)	Clashes	Symm-Clashes
1	A	2398	0	2370	65	0
1	B	2415	0	2394	76	0
1	C	2392	0	2365	104	0
1	D	2349	0	2319	111	0
2	D	1	0	0	0	0
3	A	4	0	6	1	0

*Continued on next page...*

*Continued from previous page...*

Mol	Chain	Non-H	H(model)	H(added)	Clashes	Symm-Clashes
3	B	4	0	6	4	0
3	C	4	0	6	7	0
3	D	8	0	12	3	0
4	A	24	0	25	2	0
4	B	24	0	25	1	0
4	C	24	0	25	2	0
5	D	9	0	0	0	0
6	C	6	0	8	1	0
7	A	78	0	0	1	0
7	B	85	0	0	1	0
7	C	71	0	0	2	0
7	D	68	0	0	1	0
All	All	9964	0	9561	355	0

The all-atom clashscore is defined as the number of clashes found per 1000 atoms (including hydrogen atoms). The all-atom clashscore for this structure is 18.

All (355) close contacts within the same asymmetric unit are listed below, sorted by their clash magnitude.

Atom-1	Atom-2	Interatomic distance (Å)	Clash overlap (Å)
1:C:66:LEU:HG	3:C:1270:BME:H12	1.26	1.13
1:C:200:GLU:HB3	1:C:291:LEU:HD11	1.40	1.04
1:C:284:GLU:HG3	1:C:286:LEU:HD23	1.47	0.96
1:B:77:HIS:HD2	1:B:81:ARG:HE	1.09	0.96
1:A:50:LYS:HD2	1:A:53:LYS:HD2	1.52	0.91
1:C:200:GLU:HA	1:C:203:ARG:HB3	1.53	0.90
1:D:123:PRO:O	1:D:127:ILE:HG12	1.71	0.90
1:B:181:LYS:HE3	1:B:215:LEU:HB3	1.53	0.89
1:C:25:CYS:HG	3:C:1270:BME:HS2	0.88	0.84
1:A:54:LYS:HE3	1:A:54:LYS:HA	1.59	0.83
1:D:242:CYS:HG	3:D:1272:BME:HS2	1.21	0.82
1:C:141:GLU:O	1:C:145:GLU:HG2	1.80	0.82
1:B:242:CYS:HG	3:B:1271:BME:HS2	0.96	0.82
1:C:116:VAL:HG12	1:C:117:LEU:H	1.45	0.82
1:C:96:MET:HE2	1:C:100:GLU:HB3	1.63	0.81
1:D:77:HIS:HD2	1:D:81:ARG:HE	1.29	0.79
1:A:229:TYR:H	1:A:229:TYR:HD2	1.28	0.78
1:D:313:LEU:HD12	1:D:316:SER:HA	1.64	0.78
1:C:200:GLU:HA	1:C:203:ARG:CB	2.13	0.77
1:A:203:ARG:HD3	1:A:286:LEU:HB3	1.66	0.77
4:B:401:FPP:O1B	4:B:401:FPP:O1A	2.03	0.76

*Continued on next page...*

*Continued from previous page...*

Atom-1	Atom-2	Interatomic distance (Å)	Clash overlap (Å)
1:C:203:ARG:HH22	1:C:280:ARG:HH12	1.34	0.76
1:C:25:CYS:SG	3:C:1270:BME:S2	2.67	0.76
1:D:146:ILE:HD11	1:D:190:PHE:CB	2.16	0.76
1:A:142:MET:HE1	1:A:193:GLY:HA2	1.68	0.75
1:C:199:SER:O	1:C:200:GLU:HB2	1.85	0.75
1:A:132:TRP:HB3	1:A:136:ARG:HH12	1.51	0.75
1:D:25:CYS:SG	3:D:1274:BME:S2	2.50	0.74
1:B:77:HIS:CD2	1:B:81:ARG:HE	2.01	0.73
1:C:66:LEU:HG	3:C:1270:BME:C1	2.12	0.72
1:C:282:SER:HA	1:C:287:GLU:OE1	1.90	0.72
1:D:306:GLU:O	1:D:310:GLN:HG3	1.90	0.72
1:C:136:ARG:HD3	1:C:140:ARG:HH11	1.54	0.72
1:C:25:CYS:HB2	3:C:1270:BME:H11	1.72	0.70
1:C:136:ARG:HD3	1:C:140:ARG:NH1	2.06	0.70
1:A:120:ARG:HG3	7:A:1331:HOH:O	1.91	0.69
1:D:185:ALA:O	1:D:189:ARG:HG3	1.92	0.69
1:C:77:HIS:HD2	1:C:81:ARG:HE	1.40	0.69
1:D:21:PHE:CE2	1:D:271:GLU:HG2	2.27	0.69
1:C:146:ILE:C	1:C:149:PRO:HD2	2.13	0.69
1:B:96:MET:HB2	1:B:100:GLU:HG3	1.73	0.69
1:D:146:ILE:HD11	1:D:190:PHE:HB2	1.76	0.68
1:C:222:TYR:CZ	1:C:310:GLN:HG2	2.28	0.68
1:B:242:CYS:SG	3:B:1271:BME:S2	2.68	0.68
1:B:163:ALA:HA	3:B:1271:BME:O1	1.93	0.68
1:B:96:MET:HB2	1:B:100:GLU:CD	2.14	0.68
1:A:96:MET:CE	1:A:100:GLU:HG2	2.23	0.68
1:C:314:ARG:HB2	6:C:2647:GOL:H12	1.76	0.67
1:B:197:SER:OG	1:B:200:GLU:HG3	1.95	0.67
1:C:203:ARG:HH22	1:C:280:ARG:NH1	1.93	0.67
1:D:202:GLN:O	1:D:205:ARG:HG3	1.93	0.67
1:D:26:HIS:HD2	1:D:28:LEU:H	1.43	0.67
1:A:30:GLU:O	1:A:34:LYS:HD3	1.95	0.67
1:B:205:ARG:HG2	1:B:205:ARG:HH11	1.59	0.66
1:A:168:LEU:HD22	1:A:172:LEU:HD11	1.76	0.66
1:C:306:GLU:O	1:C:310:GLN:HG3	1.95	0.66
1:B:219:ASN:HD21	1:B:305:ASN:HD21	1.43	0.66
1:D:242:CYS:SG	3:D:1272:BME:S2	2.88	0.65
1:B:96:MET:HB2	1:B:100:GLU:CG	2.26	0.65
1:A:48:ASN:ND2	1:A:50:LYS:HB2	2.12	0.65
1:C:116:VAL:HG12	1:C:117:LEU:N	2.11	0.65
1:B:72:LEU:HD12	1:B:75:ARG:HD3	1.79	0.64

*Continued on next page...*

*Continued from previous page...*

Atom-1	Atom-2	Interatomic distance (Å)	Clash overlap (Å)
1:C:52:ARG:HB2	1:C:52:ARG:HH11	1.63	0.64
1:C:274:HIS:O	1:C:278:VAL:HG23	1.97	0.64
1:A:132:TRP:HB3	1:A:136:ARG:NH1	2.12	0.64
1:D:50:LYS:O	1:D:54:LYS:HG3	1.98	0.64
1:C:66:LEU:HD22	1:C:304:GLY:HA2	1.80	0.63
1:D:82:LEU:O	1:D:85:VAL:HG12	1.98	0.63
4:A:400:FPP:O1B	4:A:400:FPP:O1A	2.16	0.63
1:C:200:GLU:OE2	1:C:286:LEU:HD12	1.99	0.62
1:A:168:LEU:HD22	1:A:172:LEU:CD1	2.29	0.62
1:C:203:ARG:NH2	1:C:280:ARG:HH12	1.97	0.62
1:C:96:MET:CE	1:C:100:GLU:HB3	2.30	0.62
1:D:187:LEU:HD23	1:D:187:LEU:O	2.00	0.62
1:B:38:GLY:O	1:B:42:GLN:HG2	2.00	0.61
1:D:102:SER:HA	1:D:158:THR:HG22	1.82	0.61
1:D:194:LEU:HD22	1:D:196:LEU:HD11	1.80	0.61
1:D:307:LEU:HD23	1:D:307:LEU:C	2.20	0.61
1:B:181:LYS:HG3	1:B:215:LEU:HD23	1.82	0.61
1:C:116:VAL:CG1	1:C:117:LEU:H	2.08	0.61
4:C:402:FPP:O1B	4:C:402:FPP:O1A	2.17	0.61
1:B:176:GLU:OE1	1:B:213:LYS:HD2	2.01	0.61
1:B:26:HIS:CD2	1:B:28:LEU:H	2.19	0.60
1:D:178:ASP:OD2	1:D:181:LYS:HG2	2.00	0.60
1:C:197:SER:O	1:C:199:SER:N	2.35	0.60
1:C:150:VAL:HG12	1:C:154:MET:HE2	1.82	0.60
1:C:52:ARG:NH1	1:C:52:ARG:HB2	2.17	0.59
1:A:96:MET:HE3	1:A:100:GLU:HG2	1.83	0.59
1:C:200:GLU:CA	1:C:203:ARG:HB3	2.29	0.59
1:A:48:ASN:HD21	1:A:50:LYS:HB2	1.67	0.59
1:A:25:CYS:SG	3:A:1273:BME:S2	3.01	0.59
1:C:52:ARG:CB	1:C:52:ARG:HH11	2.16	0.58
1:B:282:SER:HB2	1:B:287:GLU:OE2	2.04	0.58
1:B:142:MET:HG3	1:B:195:LYS:HE2	1.86	0.57
1:B:306:GLU:O	1:B:310:GLN:HG3	2.04	0.57
1:D:122:ILE:HG22	1:D:124:VAL:HG12	1.85	0.57
1:D:154:MET:HA	1:D:157:GLN:HE21	1.70	0.57
1:C:184:LEU:HD11	4:C:402:FPP:H103	1.85	0.57
1:A:281:LEU:HD22	1:A:286:LEU:HB2	1.86	0.56
1:C:124:VAL:O	1:C:128:ILE:HG12	2.05	0.56
1:D:150:VAL:HG12	1:D:154:MET:HE2	1.86	0.56
1:A:46:PHE:HB2	1:A:52:ARG:NH1	2.20	0.56
1:B:230:THR:HG22	1:B:230:THR:O	2.05	0.56

*Continued on next page...*

*Continued from previous page...*

Atom-1	Atom-2	Interatomic distance (Å)	Clash overlap (Å)
1:D:109:ILE:HG23	1:D:151:PHE:CE1	2.41	0.56
1:C:203:ARG:NH2	1:C:280:ARG:NH1	2.53	0.56
1:A:229:TYR:CG	1:A:230:THR:N	2.71	0.56
1:A:96:MET:HE2	1:A:100:GLU:HG2	1.88	0.56
1:D:79:ALA:CB	1:D:187:LEU:HD21	2.36	0.56
1:B:172:LEU:O	1:B:176:GLU:HG3	2.06	0.55
1:D:308:TRP:O	1:D:312:THR:HG22	2.05	0.55
1:A:118:PRO:HD3	1:A:129:TYR:CD1	2.40	0.55
1:D:223:SER:O	1:D:227:GLU:HG3	2.06	0.55
1:C:112:SER:O	1:C:136:ARG:NH2	2.39	0.55
1:A:109:ILE:HB	1:A:110:PRO:HD3	1.89	0.55
1:A:139:ASP:OD2	1:A:142:MET:HE3	2.07	0.55
1:B:228:LEU:O	1:B:228:LEU:HD23	2.07	0.55
1:C:42:GLN:N	1:C:42:GLN:OE1	2.40	0.55
1:B:176:GLU:CG	1:B:213:LYS:HD2	2.37	0.55
1:C:131:LEU:O	1:C:135:MET:HG3	2.07	0.55
1:A:77:HIS:O	1:A:81:ARG:HG3	2.07	0.55
1:B:49:GLU:HA	1:B:52:ARG:HG3	1.88	0.55
1:C:66:LEU:CG	3:C:1270:BME:H12	2.18	0.54
1:D:162:ARG:HD2	1:D:164:ARG:CG	2.38	0.54
1:D:39:TYR:CE2	1:D:127:ILE:HD12	2.43	0.54
1:C:132:TRP:O	1:C:136:ARG:HG3	2.08	0.54
1:B:176:GLU:HG2	1:B:213:LYS:HD2	1.89	0.54
1:D:105:ASN:ND2	1:D:154:MET:HB3	2.22	0.54
1:A:229:TYR:CD2	1:A:230:THR:N	2.69	0.53
1:B:26:HIS:HD2	1:B:28:LEU:H	1.55	0.53
1:B:223:SER:O	1:B:227:GLU:HG2	2.09	0.53
1:C:25:CYS:HG	3:C:1270:BME:C2	2.20	0.53
1:D:96:MET:HB2	1:D:100:GLU:HB3	1.90	0.53
1:B:241:LEU:HD23	1:B:246:GLN:NE2	2.24	0.53
1:B:222:TYR:CZ	1:B:310:GLN:HG2	2.44	0.53
1:C:178:ASP:O	1:C:182:GLU:HG3	2.08	0.53
1:D:51:ALA:HA	1:D:54:LYS:CD	2.38	0.53
1:D:63:VAL:HG12	1:D:67:TYR:CE2	2.43	0.53
1:B:118:PRO:HD3	1:B:129:TYR:CG	2.44	0.53
1:A:213:LYS:NZ	1:D:253:ASP:HB3	2.24	0.53
1:A:229:TYR:HD2	1:A:229:TYR:N	2.00	0.52
1:C:48:ASN:CG	1:C:49:GLU:N	2.63	0.52
1:B:112:SER:O	1:B:136:ARG:NH2	2.42	0.52
1:D:31:GLU:HA	1:D:34:LYS:HE2	1.91	0.52
1:D:118:PRO:HG2	1:D:120:ARG:HH11	1.75	0.52

*Continued on next page...*

*Continued from previous page...*

Atom-1	Atom-2	Interatomic distance (Å)	Clash overlap (Å)
1:D:118:PRO:HD3	1:D:129:TYR:CD1	2.44	0.52
1:D:49:GLU:HG3	1:D:52:ARG:HD3	1.90	0.52
1:C:66:LEU:HD22	1:C:304:GLY:CA	2.39	0.52
1:A:229:TYR:CD2	1:A:229:TYR:N	2.71	0.52
1:C:195:LYS:O	1:C:196:LEU:C	2.49	0.52
1:B:136:ARG:HG2	1:B:140:ARG:HD2	1.92	0.52
1:D:141:GLU:CD	1:D:141:GLU:H	2.13	0.52
1:A:30:GLU:HB2	1:A:31:GLU:OE2	2.09	0.52
1:D:148:GLU:HA	1:D:148:GLU:OE1	2.10	0.52
1:B:150:VAL:O	1:B:154:MET:HG3	2.10	0.51
1:C:151:PHE:HD1	1:C:154:MET:CE	2.24	0.51
1:C:39:TYR:O	1:C:43:HIS:HB2	2.10	0.51
1:B:242:CYS:CB	3:B:1271:BME:HS2	2.23	0.51
1:D:155:ARG:HH11	1:D:155:ARG:HG3	1.74	0.51
1:A:28:LEU:O	1:A:32:VAL:HG23	2.10	0.51
1:A:184:LEU:HD11	4:A:400:FPP:H103	1.92	0.51
1:D:195:LYS:O	1:D:196:LEU:HD12	2.11	0.50
1:B:285:GLY:HA2	7:B:1338:HOH:O	2.11	0.50
1:B:181:LYS:CE	1:B:215:LEU:HB3	2.36	0.50
1:A:90:ASP:OD2	1:A:314:ARG:NH2	2.44	0.50
1:D:153:PHE:O	1:D:157:GLN:HG3	2.11	0.50
1:A:44:TRP:HB3	1:A:46:PHE:CE1	2.46	0.50
1:B:132:TRP:HB3	1:B:136:ARG:NH2	2.26	0.50
1:D:132:TRP:CE3	1:D:135:MET:HE3	2.47	0.50
1:D:51:ALA:HA	1:D:54:LYS:HD2	1.93	0.50
1:D:79:ALA:HB2	1:D:187:LEU:HD21	1.93	0.50
1:C:196:LEU:HD13	1:C:197:SER:N	2.27	0.49
1:A:203:ARG:CD	1:A:286:LEU:HB3	2.40	0.49
1:C:200:GLU:C	1:C:203:ARG:H	2.15	0.49
1:B:200:GLU:HB3	1:B:291:LEU:HD21	1.95	0.49
1:A:146:ILE:C	1:A:149:PRO:HD2	2.33	0.49
1:D:151:PHE:HD1	1:D:154:MET:CE	2.26	0.49
1:A:226:LYS:HD3	1:A:316:SER:O	2.12	0.49
1:D:43:HIS:HB3	1:D:126:TYR:OH	2.12	0.49
1:D:222:TYR:CZ	1:D:310:GLN:HG2	2.48	0.49
1:B:205:ARG:NH1	1:B:205:ARG:HG2	2.25	0.49
1:B:148:GLU:HB2	1:B:149:PRO:HD3	1.94	0.49
1:D:241:LEU:N	1:D:241:LEU:HD23	2.27	0.49
1:A:78:PHE:HB3	1:A:135:MET:CE	2.43	0.49
1:C:48:ASN:CG	1:C:49:GLU:H	2.15	0.49
1:B:72:LEU:HD12	1:B:75:ARG:CD	2.42	0.49

*Continued on next page...*



*Continued from previous page...*

Atom-1	Atom-2	Interatomic distance (Å)	Clash overlap (Å)
1:D:195:LYS:C	1:D:196:LEU:HD12	2.34	0.48
1:C:246:GLN:O	1:C:250:GLN:HG3	2.12	0.48
1:D:123:PRO:HA	1:D:126:TYR:CZ	2.48	0.48
1:C:107:LYS:CE	1:C:117:LEU:HD11	2.43	0.48
1:B:241:LEU:HD23	1:B:246:GLN:CD	2.34	0.48
1:B:29:VAL:HG13	1:B:30:GLU:N	2.28	0.48
1:D:51:ALA:HA	1:D:54:LYS:CG	2.43	0.48
1:D:118:PRO:HG2	1:D:120:ARG:NH1	2.29	0.48
1:C:160:ARG:HG3	1:C:161:THR:N	2.29	0.48
1:A:281:LEU:HD13	1:A:287:GLU:HB2	1.94	0.48
1:A:96:MET:HE1	1:A:101:GLY:HA2	1.94	0.48
1:A:106:GLU:OE2	1:A:109:ILE:HD12	2.14	0.48
1:D:162:ARG:HD2	1:D:164:ARG:HG3	1.95	0.48
1:D:32:VAL:O	1:D:36:VAL:HG23	2.14	0.48
1:D:119:ASP:O	1:D:121:SER:N	2.47	0.47
1:B:313:LEU:HA	1:B:316:SER:OG	2.14	0.47
1:C:107:LYS:O	1:C:110:PRO:HD2	2.14	0.47
1:A:52:ARG:O	1:A:56:VAL:HG23	2.14	0.47
1:C:109:ILE:HB	1:C:110:PRO:HD3	1.97	0.47
1:D:26:HIS:HE1	1:D:71:ALA:O	1.97	0.47
1:A:204:VAL:O	1:A:204:VAL:HG22	2.14	0.47
1:D:72:LEU:HD12	1:D:75:ARG:HD2	1.95	0.47
1:C:200:GLU:HB3	1:C:291:LEU:CD1	2.28	0.47
1:C:77:HIS:CD2	1:C:81:ARG:HE	2.27	0.47
1:D:178:ASP:HB3	1:D:181:LYS:HG2	1.95	0.47
1:D:63:VAL:HG22	1:D:308:TRP:NE1	2.30	0.47
1:C:285:GLY:C	1:C:286:LEU:HD22	2.35	0.47
1:A:50:LYS:HA	1:A:53:LYS:HD2	1.96	0.47
1:B:44:TRP:HB3	1:B:46:PHE:CE1	2.49	0.47
1:D:117:LEU:N	1:D:117:LEU:HD22	2.30	0.47
1:C:200:GLU:HA	1:C:203:ARG:HB2	1.96	0.47
1:C:42:GLN:HE22	1:C:52:ARG:HD2	1.79	0.47
1:C:49:GLU:CD	1:C:52:ARG:HH12	2.16	0.47
1:C:29:VAL:HG13	1:C:30:GLU:N	2.29	0.47
1:B:203:ARG:HD3	1:B:286:LEU:HD13	1.96	0.47
1:B:199:SER:O	1:B:203:ARG:HG3	2.14	0.47
1:D:77:HIS:HD2	1:D:81:ARG:NE	2.07	0.47
1:C:49:GLU:HA	1:C:52:ARG:NH1	2.30	0.47
1:D:26:HIS:CD2	1:D:28:LEU:H	2.29	0.47
1:D:99:GLU:HG3	1:D:100:GLU:N	2.29	0.47
1:B:140:ARG:NE	1:B:144:ASP:OD2	2.47	0.47

*Continued on next page...*

*Continued from previous page...*

Atom-1	Atom-2	Interatomic distance (Å)	Clash overlap (Å)
1:B:247:ILE:O	1:B:251:GLU:HG3	2.15	0.47
1:C:61:SER:OG	1:C:80:CYS:HB3	2.14	0.46
1:D:113:ARG:O	1:D:136:ARG:NH2	2.48	0.46
1:B:155:ARG:HD3	1:D:202:GLN:HG3	1.97	0.46
1:D:66:LEU:HD11	1:D:307:LEU:HD22	1.97	0.46
1:B:228:LEU:C	1:B:230:THR:H	2.18	0.46
1:C:33:SER:O	1:C:37:ASP:HB2	2.16	0.46
1:D:106:GLU:OE2	1:D:109:ILE:HD12	2.15	0.46
1:D:131:LEU:HD13	1:D:135:MET:HE2	1.98	0.46
1:A:75:ARG:HH12	1:A:142:MET:CE	2.29	0.46
1:A:223:SER:O	1:A:227:GLU:HG3	2.16	0.46
1:D:146:ILE:HD11	1:D:190:PHE:HB3	1.94	0.46
1:B:123:PRO:HA	1:B:126:TYR:CE2	2.51	0.46
1:C:49:GLU:HA	1:C:52:ARG:CZ	2.46	0.46
1:C:291:LEU:O	1:C:295:VAL:HB	2.16	0.46
1:D:109:ILE:N	1:D:110:PRO:HD2	2.31	0.46
1:D:16:PRO:HG2	1:D:310:GLN:NE2	2.31	0.46
1:B:230:THR:C	1:B:232:LYS:N	2.68	0.46
1:C:77:HIS:O	1:C:81:ARG:HG3	2.16	0.46
1:D:287:GLU:N	1:D:287:GLU:OE1	2.46	0.46
1:D:97:SER:OG	1:D:99:GLU:HG2	2.16	0.45
1:B:29:VAL:HG13	1:B:30:GLU:H	1.82	0.45
1:C:156:ALA:C	1:C:158:THR:H	2.19	0.45
1:D:90:ASP:C	1:D:92:LEU:H	2.20	0.45
1:B:131:LEU:O	1:B:135:MET:HG3	2.17	0.45
1:A:250:GLN:HE21	1:B:165:PRO:HD3	1.80	0.45
1:D:257:GLU:CD	1:D:257:GLU:H	2.19	0.45
1:C:113:ARG:C	1:C:136:ARG:NH2	2.70	0.45
1:B:148:GLU:OE2	1:B:148:GLU:HA	2.16	0.45
1:B:124:VAL:O	1:B:128:ILE:HG12	2.17	0.45
1:A:96:MET:CE	1:A:101:GLY:HA2	2.47	0.45
1:D:102:SER:HA	1:D:158:THR:CG2	2.46	0.45
1:C:156:ALA:HA	1:C:159:ASP:OD1	2.16	0.45
1:A:49:GLU:O	1:A:53:LYS:HE3	2.17	0.45
1:D:146:ILE:O	1:D:146:ILE:HG22	2.17	0.45
1:D:307:LEU:HD23	1:D:307:LEU:O	2.16	0.45
1:A:205:ARG:HG3	1:A:205:ARG:HH11	1.80	0.45
1:C:94:GLU:HG3	1:C:95:TYR:CD2	2.52	0.45
1:D:179:VAL:O	1:D:182:GLU:HB3	2.16	0.45
1:B:256:ALA:O	1:B:260:LYS:HG3	2.17	0.45
1:B:267:CYS:O	1:B:271:GLU:HG3	2.17	0.45

*Continued on next page...*

*Continued from previous page...*

Atom-1	Atom-2	Interatomic distance (Å)	Clash overlap (Å)
1:C:26:HIS:HA	1:C:27:PRO:HD3	1.84	0.45
1:C:131:LEU:C	1:C:131:LEU:HD13	2.36	0.45
1:C:61:SER:HB2	7:C:2662:HOH:O	2.17	0.45
1:D:151:PHE:O	1:D:155:ARG:HG2	2.17	0.44
1:D:119:ASP:C	1:D:121:SER:H	2.21	0.44
1:A:48:ASN:HD21	1:A:50:LYS:CB	2.31	0.44
1:D:131:LEU:HD13	1:D:132:TRP:N	2.33	0.44
1:D:150:VAL:HG12	1:D:154:MET:CE	2.48	0.44
1:B:271:GLU:O	1:B:274:HIS:HB3	2.17	0.44
1:A:222:TYR:CZ	1:A:310:GLN:HG2	2.52	0.44
1:C:213:LYS:HE3	1:C:270:TRP:CE2	2.53	0.44
1:A:75:ARG:HH22	1:A:142:MET:HE3	1.80	0.44
1:D:32:VAL:HG21	1:D:76:ILE:HG23	1.99	0.44
1:B:156:ALA:HA	1:B:159:ASP:OD2	2.17	0.44
1:B:109:ILE:HB	1:B:110:PRO:HD3	2.00	0.44
1:C:280:ARG:HG2	1:C:280:ARG:HH11	1.83	0.44
1:A:29:VAL:HG13	1:A:30:GLU:N	2.33	0.44
1:B:308:TRP:O	1:B:312:THR:HG22	2.18	0.44
1:B:169:GLY:HA3	1:C:251:GLU:HG2	2.00	0.44
1:C:117:LEU:H	1:C:117:LEU:HD23	1.83	0.44
1:C:45:ASN:ND2	1:C:123:PRO:HG2	2.33	0.44
1:A:26:HIS:ND1	1:A:27:PRO:HD2	2.33	0.44
1:C:111:ILE:HG12	1:C:117:LEU:O	2.18	0.43
1:D:146:ILE:HG22	1:D:150:VAL:HG23	2.00	0.43
1:D:72:LEU:HD12	1:D:75:ARG:CD	2.48	0.43
1:C:229:TYR:C	1:C:229:TYR:CD2	2.90	0.43
1:B:33:SER:O	1:B:37:ASP:HB2	2.17	0.43
1:C:71:ALA:HB1	1:C:191:SER:HB3	2.00	0.43
1:A:50:LYS:HD2	1:A:50:LYS:HA	1.86	0.43
1:D:39:TYR:O	1:D:42:GLN:HB3	2.18	0.43
1:C:29:VAL:HG13	1:C:30:GLU:H	1.84	0.43
1:B:181:LYS:HE3	1:B:215:LEU:CB	2.35	0.43
1:D:99:GLU:HG3	1:D:100:GLU:H	1.83	0.43
1:D:146:ILE:O	1:D:150:VAL:HG23	2.19	0.43
1:C:93:LEU:HD11	1:C:105:ASN:HD21	1.83	0.43
1:B:203:ARG:CD	1:B:286:LEU:HB3	2.49	0.43
1:C:280:ARG:O	1:C:284:GLU:HG2	2.18	0.43
1:A:75:ARG:HH12	1:A:142:MET:HE3	1.84	0.43
1:B:41:LEU:O	1:B:52:ARG:NH1	2.46	0.43
1:D:194:LEU:HD22	1:D:196:LEU:CD1	2.47	0.42
1:D:307:LEU:CD2	1:D:307:LEU:C	2.87	0.42

*Continued on next page...*

*Continued from previous page...*

Atom-1	Atom-2	Interatomic distance (Å)	Clash overlap (Å)
1:D:63:VAL:HG13	1:D:308:TRP:CG	2.54	0.42
1:D:59:GLY:O	1:D:63:VAL:HG23	2.19	0.42
1:B:32:VAL:HG21	1:B:76:ILE:HG23	2.01	0.42
1:D:26:HIS:CD2	1:D:28:LEU:HB2	2.55	0.42
1:D:41:LEU:HD11	1:D:56:VAL:CG2	2.49	0.42
1:D:22:GLN:NE2	1:D:23:PRO:O	2.51	0.42
1:C:14:LEU:HA	7:C:2654:HOH:O	2.19	0.42
1:A:148:GLU:OE1	1:A:148:GLU:HA	2.19	0.42
1:D:68:PHE:CE2	1:D:188:MET:HB2	2.54	0.42
1:C:202:GLN:O	1:C:205:ARG:HG3	2.19	0.42
1:A:31:GLU:H	1:A:31:GLU:CD	2.23	0.42
1:C:42:GLN:OE1	1:C:52:ARG:HD3	2.19	0.42
1:C:119:ASP:OD1	1:C:122:ILE:HG13	2.20	0.42
1:B:203:ARG:HH21	1:B:288:THR:HG23	1.85	0.42
1:C:42:GLN:CD	1:C:42:GLN:N	2.73	0.42
1:B:218:VAL:HG11	1:B:306:GLU:HA	2.02	0.42
1:C:118:PRO:O	1:C:119:ASP:C	2.57	0.42
1:D:288:THR:OG1	1:D:291:LEU:HB2	2.20	0.41
1:C:148:GLU:N	1:C:149:PRO:CD	2.83	0.41
1:C:107:LYS:HE3	1:C:117:LEU:HD11	2.02	0.41
1:D:132:TRP:CZ3	1:D:147:LEU:HD23	2.56	0.41
1:D:202:GLN:CD	1:D:205:ARG:HD2	2.40	0.41
1:A:160:ARG:HG3	1:A:160:ARG:HH11	1.85	0.41
1:A:223:SER:HB3	1:A:315:TYR:CE1	2.56	0.41
1:C:50:LYS:HE3	1:C:50:LYS:HB2	1.97	0.41
1:C:195:LYS:O	1:C:196:LEU:O	2.38	0.41
1:C:288:THR:HG23	1:C:291:LEU:H	1.86	0.41
1:C:49:GLU:OE2	1:C:52:ARG:NH1	2.48	0.41
1:B:280:ARG:O	1:B:284:GLU:HG3	2.20	0.41
1:C:98:PHE:HD1	1:C:98:PHE:H	1.69	0.41
1:D:119:ASP:C	1:D:121:SER:N	2.74	0.41
1:B:55:PHE:O	1:B:58:ALA:HB3	2.20	0.41
1:D:51:ALA:HA	1:D:54:LYS:HG3	2.03	0.41
1:D:178:ASP:HB3	1:D:181:LYS:CG	2.51	0.41
1:C:122:ILE:HG22	1:C:124:VAL:HG12	2.02	0.41
1:B:146:ILE:C	1:B:149:PRO:HD2	2.41	0.41
1:D:147:LEU:HB3	1:D:151:PHE:CE2	2.56	0.40
1:D:119:ASP:HB3	1:D:122:ILE:HG12	2.03	0.40
1:A:26:HIS:HB3	1:A:65:CYS:HB3	2.03	0.40
1:A:123:PRO:O	1:A:127:ILE:HG13	2.21	0.40
1:D:175:ARG:HA	1:D:175:ARG:HD3	1.71	0.40

*Continued on next page...*

*Continued from previous page...*

Atom-1	Atom-2	Interatomic distance (Å)	Clash overlap (Å)
1:D:176:GLU:HG2	1:D:213:LYS:HG3	2.04	0.40
1:A:78:PHE:HB3	1:A:135:MET:HE2	2.02	0.40
1:D:175:ARG:NH1	7:D:4321:HOH:O	2.53	0.40
1:A:96:MET:HB3	1:A:96:MET:HE2	1.99	0.40
1:A:174:TYR:HE1	1:A:175:ARG:NH1	2.19	0.40
1:D:108:LEU:HD22	1:D:128:ILE:HG13	2.03	0.40

There are no symmetry-related clashes.

## 5.3 Torsion angles [i](#)

### 5.3.1 Protein backbone [i](#)

In the following table, the Percentiles column shows the percent Ramachandran outliers of the chain as a percentile score with respect to all X-ray entries followed by that with respect to entries of similar resolution.

The Analysed column shows the number of residues for which the backbone conformation was analysed, and the total number of residues.

Mol	Chain	Analysed	Favoured	Allowed	Outliers	Percentiles	
1	A	292/320 (91%)	279 (96%)	12 (4%)	1 (0%)	46	45
1	B	294/320 (92%)	281 (96%)	8 (3%)	5 (2%)	11	5
1	C	291/320 (91%)	262 (90%)	23 (8%)	6 (2%)	9	3
1	D	282/320 (88%)	267 (95%)	12 (4%)	3 (1%)	17	11
All	All	1159/1280 (90%)	1089 (94%)	55 (5%)	15 (1%)	15	9

All (15) Ramachandran outliers are listed below:

Mol	Chain	Res	Type
1	B	47	PRO
1	C	43	HIS
1	D	158	THR
1	C	14	LEU
1	C	119	ASP
1	C	196	LEU
1	D	120	ARG
1	B	14	LEU
1	B	120	ARG

*Continued on next page...*

*Continued from previous page...*

Mol	Chain	Res	Type
1	D	316	SER
1	A	47	PRO
1	B	229	TYR
1	C	116	VAL
1	C	198	PRO
1	B	15	GLU

### 5.3.2 Protein sidechains ⓘ

In the following table, the Percentiles column shows the percent sidechain outliers of the chain as a percentile score with respect to all X-ray entries followed by that with respect to entries of similar resolution.

The Analysed column shows the number of residues for which the sidechain conformation was analysed, and the total number of residues.

Mol	Chain	Analysed	Rotameric	Outliers	Percentiles	
1	A	261/279 (94%)	250 (96%)	11 (4%)	36	35
1	B	263/279 (94%)	250 (95%)	13 (5%)	31	28
1	C	260/279 (93%)	247 (95%)	13 (5%)	30	27
1	D	255/279 (91%)	243 (95%)	12 (5%)	32	30
All	All	1039/1116 (93%)	990 (95%)	49 (5%)	32	30

All (49) residues with a non-rotameric sidechain are listed below:

Mol	Chain	Res	Type
1	A	54	LYS
1	A	66	LEU
1	A	115	ASP
1	A	148	GLU
1	A	152	LEU
1	A	168	LEU
1	A	196	LEU
1	A	229	TYR
1	A	243	THR
1	A	264	PHE
1	A	281	LEU
1	B	14	LEU
1	B	66	LEU
1	B	94	GLU
1	B	117	LEU

*Continued on next page...*

*Continued from previous page...*

Mol	Chain	Res	Type
1	B	120	ARG
1	B	131	LEU
1	B	141	GLU
1	B	145	GLU
1	B	196	LEU
1	B	215	LEU
1	B	229	TYR
1	B	243	THR
1	B	264	PHE
1	C	42	GLN
1	C	66	LEU
1	C	82	LEU
1	C	152	LEU
1	C	159	ASP
1	C	195	LYS
1	C	196	LEU
1	C	229	TYR
1	C	243	THR
1	C	264	PHE
1	C	287	GLU
1	C	288	THR
1	C	295	VAL
1	D	22	GLN
1	D	31	GLU
1	D	91	ASP
1	D	105	ASN
1	D	120	ARG
1	D	131	LEU
1	D	148	GLU
1	D	243	THR
1	D	264	PHE
1	D	287	GLU
1	D	291	LEU
1	D	317	VAL

Some sidechains can be flipped to improve hydrogen bonding and reduce clashes. All (17) such sidechains are listed below:

Mol	Chain	Res	Type
1	A	22	GLN
1	A	219	ASN
1	A	250	GLN
1	A	301	GLN

*Continued on next page...*

*Continued from previous page...*

Mol	Chain	Res	Type
1	A	305	ASN
1	B	26	HIS
1	B	77	HIS
1	B	305	ASN
1	C	45	ASN
1	C	157	GLN
1	D	22	GLN
1	D	26	HIS
1	D	77	HIS
1	D	105	ASN
1	D	157	GLN
1	D	246	GLN
1	D	250	GLN

### 5.3.3 RNA [i](#)

There are no RNA molecules in this entry.

## 5.4 Non-standard residues in protein, DNA, RNA chains [i](#)

There are no non-standard protein/DNA/RNA residues in this entry.

## 5.5 Carbohydrates [i](#)

There are no carbohydrates in this entry.

## 5.6 Ligand geometry [i](#)

Of 11 ligands modelled in this entry, 1 is monoatomic - leaving 10 for Mogul analysis.

In the following table, the Counts columns list the number of bonds (or angles) for which Mogul statistics could be retrieved, the number of bonds (or angles) that are observed in the model and the number of bonds (or angles) that are defined in the chemical component dictionary. The Link column lists molecule types, if any, to which the group is linked. The Z score for a bond length (or angle) is the number of standard deviations the observed value is removed from the expected value. A bond length (or angle) with  $|Z| > 2$  is considered an outlier worth inspection. RMSZ is the root-mean-square of all Z scores of the bond lengths (or angles).

Mol	Type	Chain	Res	Link	Bond lengths			Bond angles		
					Counts	RMSZ	$\# Z  > 2$	Counts	RMSZ	$\# Z  > 2$
3	BME	A	1273	-	3,3,3	0.25	0	2,2,2	0.61	0



Mol	Type	Chain	Res	Link	Bond lengths			Bond angles		
					Counts	RMSZ	# Z  > 2	Counts	RMSZ	# Z  > 2
4	FPP	A	400	-	21,23,23	0.91	0	27,31,31	1.82	5 (18%)
3	BME	B	1271	-	3,3,3	0.41	0	2,2,2	1.11	0
4	FPP	B	401	-	21,23,23	1.11	2 (9%)	27,31,31	1.88	5 (18%)
3	BME	C	1270	-	3,3,3	0.24	0	2,2,2	0.86	0
6	GOL	C	2647	-	5,5,5	0.29	0	5,5,5	0.37	0
4	FPP	C	402	-	21,23,23	0.86	0	27,31,31	1.77	5 (18%)
3	BME	D	1272	-	3,3,3	0.51	0	2,2,2	0.63	0
3	BME	D	1274	-	3,3,3	0.77	0	2,2,2	0.52	0
5	POP	D	4294	2	8,8,8	1.84	2 (25%)	13,13,13	2.50	1 (7%)

In the following table, the Chirals column lists the number of chiral outliers, the number of chiral centers analysed, the number of these observed in the model and the number defined in the chemical component dictionary. Similar counts are reported in the Torsion and Rings columns. '-' means no outliers of that kind were identified.

Mol	Type	Chain	Res	Link	Chirals	Torsions	Rings
3	BME	A	1273	-	-	0/1/1/1	0/0/0/0
4	FPP	A	400	-	-	0/25/25/25	0/0/0/0
3	BME	B	1271	-	-	0/1/1/1	0/0/0/0
4	FPP	B	401	-	-	0/25/25/25	0/0/0/0
3	BME	C	1270	-	-	0/1/1/1	0/0/0/0
6	GOL	C	2647	-	-	0/4/4/4	0/0/0/0
4	FPP	C	402	-	-	0/25/25/25	0/0/0/0
3	BME	D	1272	-	-	0/1/1/1	0/0/0/0
3	BME	D	1274	-	-	0/1/1/1	0/0/0/0
5	POP	D	4294	2	-	0/6/6/6	0/0/0/0

All (4) bond length outliers are listed below:

Mol	Chain	Res	Type	Atoms	Z	Observed(Å)	Ideal(Å)
4	B	401	FPP	PB-O3B	2.33	1.63	1.54
4	B	401	FPP	PB-O2B	2.58	1.64	1.54
5	D	4294	POP	P1-O3	3.18	1.61	1.50
5	D	4294	POP	P2-O6	3.30	1.61	1.50

All (16) bond angle outliers are listed below:

Mol	Chain	Res	Type	Atoms	Z	Observed(°)	Ideal(°)
5	D	4294	POP	P2-O-P1	-8.43	109.07	132.73
4	B	401	FPP	PA-O3A-PB	-6.76	109.99	132.67
4	A	400	FPP	PA-O3A-PB	-6.39	111.24	132.67

*Continued on next page...*

*Continued from previous page...*

Mol	Chain	Res	Type	Atoms	Z	Observed(°)	Ideal(°)
4	C	402	FPP	PA-O3A-PB	-6.35	111.38	132.67
4	A	400	FPP	C6-C7-C8	-2.90	121.46	127.76
4	C	402	FPP	C6-C7-C8	-2.74	121.81	127.76
4	B	401	FPP	C6-C7-C8	-2.52	122.28	127.76
4	C	402	FPP	O3A-PA-O1	2.11	108.52	102.94
4	B	401	FPP	O3A-PA-O1	2.49	109.53	102.94
4	C	402	FPP	C4-C3-C5	2.55	119.31	115.41
4	A	400	FPP	O3A-PA-O1	2.56	109.72	102.94
4	A	400	FPP	C4-C3-C5	2.61	119.40	115.41
4	B	401	FPP	C4-C3-C5	2.66	119.47	115.41
4	C	402	FPP	C10-C8-C9	2.70	119.53	115.41
4	A	400	FPP	C10-C8-C9	2.82	119.72	115.41
4	B	401	FPP	C10-C8-C9	3.23	120.35	115.41

There are no chirality outliers.

There are no torsion outliers.

There are no ring outliers.

9 monomers are involved in 21 short contacts:

Mol	Chain	Res	Type	Clashes	Symm-Clashes
3	A	1273	BME	1	0
4	A	400	FPP	2	0
3	B	1271	BME	4	0
4	B	401	FPP	1	0
3	C	1270	BME	7	0
6	C	2647	GOL	1	0
4	C	402	FPP	2	0
3	D	1272	BME	2	0
3	D	1274	BME	1	0

## 5.7 Other polymers [i](#)

There are no such residues in this entry.

## 5.8 Polymer linkage issues [i](#)

There are no chain breaks in this entry.

## 6 Fit of model and data ⓘ

### 6.1 Protein, DNA and RNA chains ⓘ

In the following table, the column labelled ‘#RSRZ> 2’ contains the number (and percentage) of RSRZ outliers, followed by percent RSRZ outliers for the chain as percentile scores relative to all X-ray entries and entries of similar resolution. The OWAB column contains the minimum, median, 95<sup>th</sup> percentile and maximum values of the occupancy-weighted average B-factor per residue. The column labelled ‘Q< 0.9’ lists the number of (and percentage) of residues with an average occupancy less than 0.9.

Mol	Chain	Analysed	<RSRZ>	#RSRZ>2	OWAB(Å <sup>2</sup> )	Q<0.9
1	A	296/320 (92%)	0.59	13 (4%) 38 47	21, 42, 64, 78	0
1	B	298/320 (93%)	0.51	16 (5%) 29 38	25, 42, 65, 76	0
1	C	295/320 (92%)	0.71	24 (8%) 15 20	22, 46, 71, 75	0
1	D	290/320 (90%)	1.00	38 (13%) 5 6	23, 44, 74, 91	0
All	All	1179/1280 (92%)	0.70	91 (7%) 16 22	21, 44, 70, 91	0

All (91) RSRZ outliers are listed below:

Mol	Chain	Res	Type	RSRZ
1	C	117	LEU	10.1
1	D	95	TYR	8.0
1	B	240	ILE	7.2
1	A	230	THR	6.8
1	D	50	LYS	6.7
1	B	229	TYR	6.5
1	A	229	TYR	6.3
1	D	53	LYS	6.3
1	B	161	THR	5.9
1	C	230	THR	5.6
1	D	48	ASN	5.6
1	D	313	LEU	5.4
1	A	231	SER	5.2
1	D	96	MET	5.2
1	D	54	LYS	5.1
1	C	98	PHE	5.0
1	A	317	VAL	5.0
1	D	162	ARG	5.0
1	D	51	ALA	4.9
1	B	232	LYS	4.3
1	D	99	GLU	4.3

*Continued on next page...*

*Continued from previous page...*

Mol	Chain	Res	Type	RSRZ
1	D	97	SER	4.2
1	A	50	LYS	4.2
1	D	55	PHE	4.1
1	C	13	SER	4.1
1	B	160	ARG	4.1
1	C	286	LEU	3.9
1	C	229	TYR	3.8
1	D	94	GLU	3.7
1	D	41	LEU	3.7
1	C	283	ALA	3.7
1	D	158	THR	3.6
1	D	52	ARG	3.5
1	C	196	LEU	3.5
1	B	98	PHE	3.4
1	D	92	LEU	3.3
1	D	42	GLN	3.2
1	B	317	VAL	3.2
1	C	103	ALA	3.2
1	D	91	ASP	3.2
1	C	99	GLU	3.2
1	D	229	TYR	3.1
1	D	101	GLY	3.1
1	D	49	GLU	3.1
1	D	316	SER	3.1
1	A	47	PRO	3.0
1	D	117	LEU	3.0
1	D	13	SER	2.9
1	D	166	MET	2.9
1	D	38	GLY	2.9
1	D	215	LEU	2.8
1	A	204	VAL	2.8
1	B	50	LYS	2.8
1	B	316	SER	2.7
1	B	51	ALA	2.7
1	C	317	VAL	2.7
1	B	14	LEU	2.7
1	C	118	PRO	2.7
1	C	114	GLY	2.7
1	D	93	LEU	2.6
1	A	141	GLU	2.6
1	D	39	TYR	2.6
1	C	42	GLN	2.6

*Continued on next page...*

*Continued from previous page...*

Mol	Chain	Res	Type	RSRZ
1	B	231	SER	2.6
1	A	46	PHE	2.5
1	B	95	TYR	2.5
1	A	98	PHE	2.4
1	D	165	PRO	2.4
1	D	317	VAL	2.4
1	D	43	HIS	2.4
1	C	280	ARG	2.4
1	C	95	TYR	2.3
1	D	40	PHE	2.3
1	C	197	SER	2.3
1	D	88	LEU	2.2
1	C	129	TYR	2.2
1	D	168	LEU	2.2
1	C	160	ARG	2.1
1	C	101	GLY	2.1
1	C	198	PRO	2.1
1	A	122	ILE	2.1
1	B	25	CYS	2.1
1	C	165	PRO	2.1
1	B	230	THR	2.1
1	D	98	PHE	2.1
1	C	116	VAL	2.1
1	A	161	THR	2.1
1	B	42	GLN	2.0
1	C	163	ALA	2.0
1	D	45	ASN	2.0
1	A	13	SER	2.0

## 6.2 Non-standard residues in protein, DNA, RNA chains [i](#)

There are no non-standard protein/DNA/RNA residues in this entry.

## 6.3 Carbohydrates [i](#)

There are no carbohydrates in this entry.

## 6.4 Ligands [i](#)

In the following table, the Atoms column lists the number of modelled atoms in the group and the number defined in the chemical component dictionary. LLDF column lists the quality of electron

density of the group with respect to its neighbouring residues in protein, DNA or RNA chains. The B-factors column lists the minimum, median, 95<sup>th</sup> percentile and maximum values of B factors of atoms in the group. The column labelled 'Q< 0.9' lists the number of atoms with occupancy less than 0.9.

Mol	Type	Chain	Res	Atoms	RSCC	RSR	LLDF	B-factors(Å <sup>2</sup> )	Q<0.9
3	BME	A	1273	4/4	0.79	0.47	27.31	43,45,45,47	4
3	BME	B	1271	4/4	0.82	0.22	2.47	52,52,54,54	0
3	BME	C	1270	4/4	0.86	0.20	2.06	34,35,36,39	0
4	FPP	C	402	24/24	0.91	0.17	1.63	54,64,72,73	0
4	FPP	A	400	24/24	0.92	0.17	1.24	56,60,69,69	0
6	GOL	C	2647	6/6	0.87	0.14	0.93	47,50,50,51	0
4	FPP	B	401	24/24	0.94	0.14	0.11	40,51,59,59	0
3	BME	D	1274	4/4	0.93	0.16	-0.14	37,37,38,41	0
5	POP	D	4294	9/9	0.96	0.10	-1.94	41,43,46,47	0
2	MG	D	701	1/1	0.93	0.12	-	54,54,54,54	0
3	BME	D	1272	4/4	0.94	0.19	-	56,57,57,57	0

## 6.5 Other polymers

There are no such residues in this entry.