



wwPDB X-ray Structure Validation Summary Report ⓘ

Jul 4, 2016 – 05:02 AM EDT

PDB ID : 5BN7
Title : Crystal structure of maltodextrin glucosidase from E.coli at 3.7 Å resolution
Authors : Shukla, P.K.; Pastor, A.; Singh, A.K.; Sharma, S.; Singh, T.P.; Chaudhuri, T.K.
Deposited on : 2015-05-25
Resolution : 3.70 Å(reported)

This is a wwPDB X-ray Structure Validation Summary Report for a publicly released PDB entry.
We welcome your comments at validation@mail.wwpdb.org
A user guide is available at
<http://wwpdb.org/validation/2016/XrayValidationReportHelp>
with specific help available everywhere you see the ⓘ symbol.

The following versions of software and data (see [references ⓘ](#)) were used in the production of this report:

MolProbity : 4.02b-467
Mogul : unknown
Xtriage (Phenix) : 1.9-1692
EDS : rb-20027790
Percentile statistics : 20151230.v01 (using entries in the PDB archive December 30th 2015)
Refmac : 5.8.0135
CCP4 : 6.5.0
Ideal geometry (proteins) : Engh & Huber (2001)
Ideal geometry (DNA, RNA) : Parkinson et al. (1996)
Validation Pipeline (wwPDB-VP) : rb-20027790

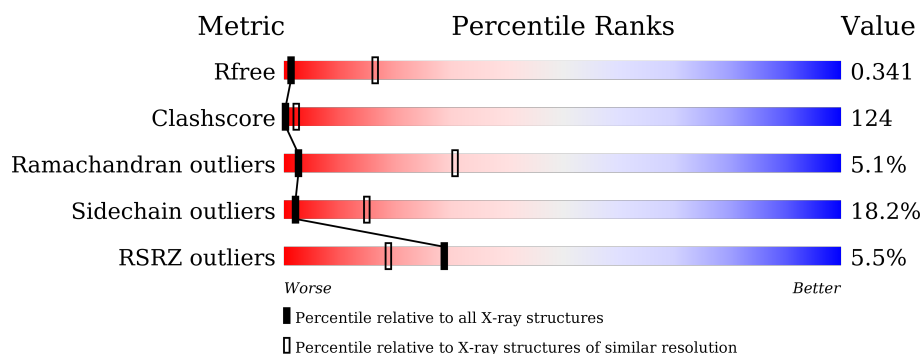
1 Overall quality at a glance ⓘ

The following experimental techniques were used to determine the structure:

X-RAY DIFFRACTION

The reported resolution of this entry is 3.70 Å.

Percentile scores (ranging between 0-100) for global validation metrics of the entry are shown in the following graphic. The table shows the number of entries on which the scores are based.



Metric	Whole archive (#Entries)	Similar resolution (#Entries, resolution range(Å))
R_{free}	91344	1101 (3.90-3.50)
Clashscore	102246	1224 (3.90-3.50)
Ramachandran outliers	100387	1172 (3.90-3.50)
Sidechain outliers	100360	1170 (3.90-3.50)
RSRZ outliers	91569	1108 (3.90-3.50)

The table below summarises the geometric issues observed across the polymeric chains and their fit to the electron density. The red, orange, yellow and green segments on the lower bar indicate the fraction of residues that contain outliers for ≥ 3 , 2, 1 and 0 types of geometric quality criteria. A grey segment represents the fraction of residues that are not modelled. The numeric value for each fraction is indicated below the corresponding segment, with a dot representing fractions $\leq 5\%$. The upper red bar (where present) indicates the fraction of residues that have poor fit to the electron density. The numeric value is given above the bar.

Mol	Chain	Length	Quality of chain
1	A	616	<div> <div>4%</div> <div>12%</div> <div>44%</div> <div>16%</div> <div>•</div> <div>26%</div> </div>

2 Entry composition

There is only 1 type of molecule in this entry. The entry contains 3618 atoms, of which 0 are hydrogens and 0 are deuteriums.

In the tables below, the ZeroOcc column contains the number of atoms modelled with zero occupancy, the AltConf column contains the number of residues with at least one atom in alternate conformation and the Trace column contains the number of residues modelled with at most 2 atoms.

- Molecule 1 is a protein called Maltodextrin glucosidase.

Mol	Chain	Residues	Atoms					ZeroOcc	AltConf	Trace
1	A	453	Total	C	N	O	S	0	0	0
			3618	2298	642	666	12			

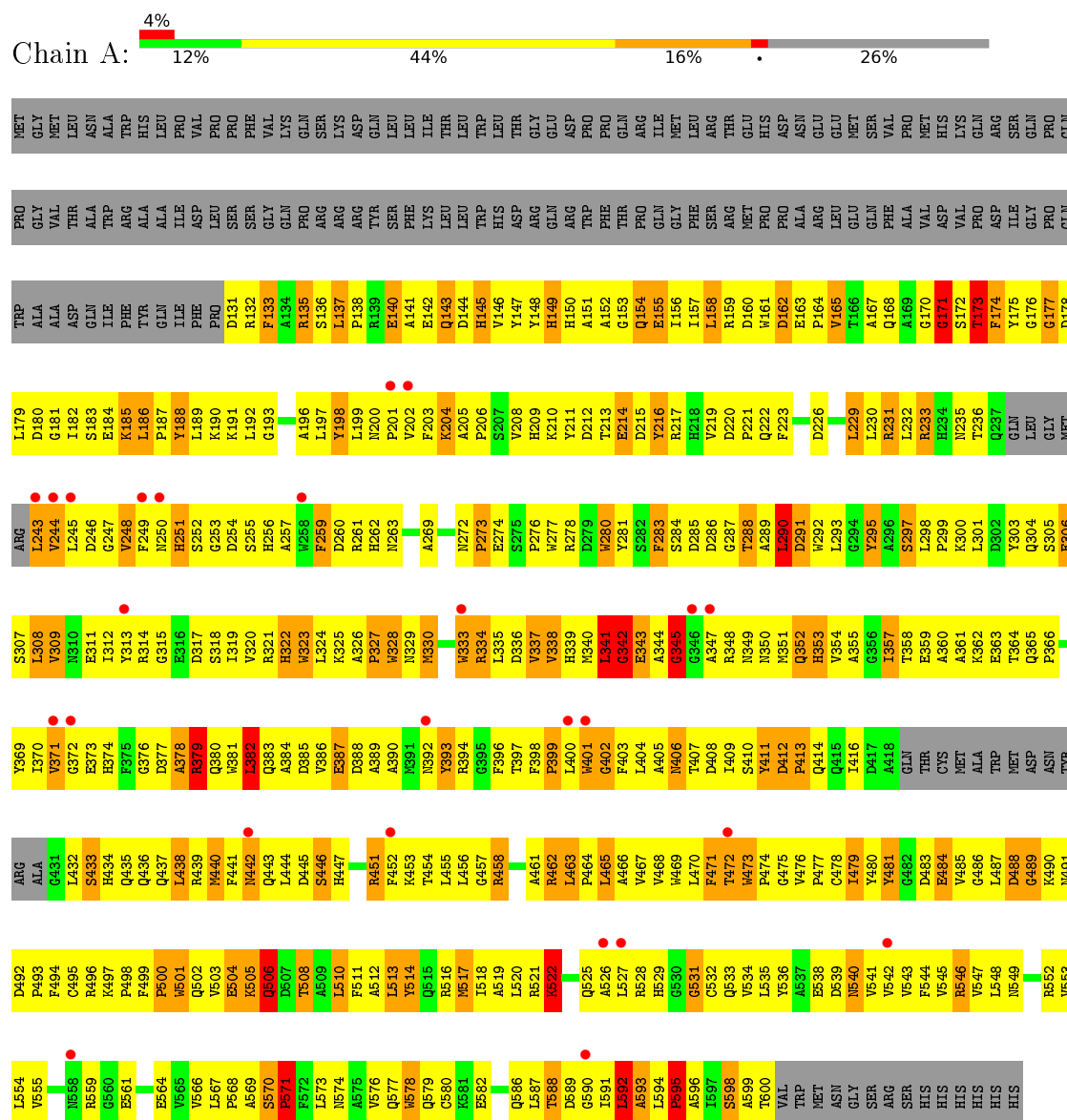
There are 12 discrepancies between the modelled and reference sequences:

Chain	Residue	Modelled	Actual	Comment	Reference
A	-1	MET	-	expression tag	UNP P21517
A	0	GLY	-	expression tag	UNP P21517
A	605	GLY	-	expression tag	UNP P21517
A	606	SER	-	expression tag	UNP P21517
A	607	ARG	-	expression tag	UNP P21517
A	608	SER	-	expression tag	UNP P21517
A	609	HIS	-	expression tag	UNP P21517
A	610	HIS	-	expression tag	UNP P21517
A	611	HIS	-	expression tag	UNP P21517
A	612	HIS	-	expression tag	UNP P21517
A	613	HIS	-	expression tag	UNP P21517
A	614	HIS	-	expression tag	UNP P21517

3 Residue-property plots

These plots are drawn for all protein, RNA and DNA chains in the entry. The first graphic for a chain summarises the proportions of errors displayed in the second graphic. The second graphic shows the sequence view annotated by issues in geometry and electron density. Residues are color-coded according to the number of geometric quality criteria for which they contain at least one outlier: green = 0, yellow = 1, orange = 2 and red = 3 or more. A red dot above a residue indicates a poor fit to the electron density ($RSRZ > 2$). Stretches of 2 or more consecutive residues without any outlier are shown as a green connector. Residues present in the sample, but not in the model, are shown in grey.

• Molecule 1: Maltodextrin glucosidase



4 Data and refinement statistics

Property	Value	Source
Space group	P 4	Depositor
Cell constants a, b, c, α , β , γ	110.59Å 110.59Å 69.54Å 90.00° 90.00° 90.00°	Depositor
Resolution (Å)	110.61 – 3.70 58.87 – 3.70	Depositor EDS
% Data completeness (in resolution range)	70.3 (110.61-3.70) 70.5 (58.87-3.70)	Depositor EDS
R_{merge}	(Not available)	Depositor
R_{sym}	0.10	Depositor
$\langle I/\sigma(I) \rangle$ ¹	1.27 (at 3.67Å)	Xtriage
Refinement program	REFMAC 5.6.0117	Depositor
R, R_{free}	0.330 , 0.344 0.330 , 0.341	Depositor DCC
R_{free} test set	303 reflections (4.92%)	DCC
Wilson B-factor (Å ²)	165.6	Xtriage
Anisotropy	0.006	Xtriage
Bulk solvent k_{sol} (e/Å ³), B_{sol} (Å ²)	0.33 , 455.6	EDS
L-test for twinning ²	$\langle L \rangle = 0.32$, $\langle L^2 \rangle = 0.16$	Xtriage
Estimated twinning fraction	0.329 for h,-k,-l	Xtriage
Reported twinning fraction	0.525 for H, K, L 0.475 for K, H, -L	Depositor
Outliers	0 of 6457 reflections	Xtriage
F_o, F_c correlation	0.86	EDS
Total number of atoms	3618	wwPDB-VP
Average B, all atoms (Å ²)	131.0	wwPDB-VP

Xtriage's analysis on translational NCS is as follows: *The largest off-origin peak in the Patterson function is 3.45% of the height of the origin peak. No significant pseudotranslation is detected.*

¹Intensities estimated from amplitudes.

²Theoretical values of $\langle |L| \rangle$, $\langle L^2 \rangle$ for acentric reflections are 0.5, 0.333 respectively for untwinned datasets, and 0.375, 0.2 for perfectly twinned datasets.

5 Model quality [i](#)

5.1 Standard geometry [i](#)

The Z score for a bond length (or angle) is the number of standard deviations the observed value is removed from the expected value. A bond length (or angle) with $|Z| > 5$ is considered an outlier worth inspection. RMSZ is the root-mean-square of all Z scores of the bond lengths (or angles).

Mol	Chain	Bond lengths		Bond angles	
		RMSZ	$\# Z > 5$	RMSZ	$\# Z > 5$
1	A	0.84	11/3720 (0.3%)	1.16	35/5059 (0.7%)

Chiral center outliers are detected by calculating the chiral volume of a chiral center and verifying if the center is modelled as a planar moiety or with the opposite hand. A planarity outlier is detected by checking planarity of atoms in a peptide group, atoms in a mainchain group or atoms of a sidechain that are expected to be planar.

Mol	Chain	#Chirality outliers	#Planarity outliers
1	A	0	10

The worst 5 of 11 bond length outliers are listed below:

Mol	Chain	Res	Type	Atoms	Z	Observed(Å)	Ideal(Å)
1	A	401	TRP	C-O	-9.19	1.05	1.23
1	A	401	TRP	CD2-CE2	6.07	1.48	1.41
1	A	342	GLY	N-CA	-6.01	1.37	1.46
1	A	280	TRP	CD2-CE2	5.84	1.48	1.41
1	A	341	LEU	N-CA	-5.76	1.34	1.46

The worst 5 of 35 bond angle outliers are listed below:

Mol	Chain	Res	Type	Atoms	Z	Observed(°)	Ideal(°)
1	A	341	LEU	CA-C-N	-11.75	92.70	116.20
1	A	185	LYS	CB-CA-C	-11.08	88.24	110.40
1	A	378	ALA	CB-CA-C	-10.07	94.99	110.10
1	A	501	TRP	CB-CA-C	8.95	128.30	110.40
1	A	442	ASN	CB-CA-C	-8.58	93.24	110.40

There are no chirality outliers.

5 of 10 planarity outliers are listed below:

Mol	Chain	Res	Type	Group
1	A	171	GLY	Peptide
1	A	204	LYS	Peptide
1	A	259	PHE	Peptide
1	A	283	PHE	Peptide
1	A	284	SER	Peptide

5.2 Too-close contacts [i](#)

In the following table, the Non-H and H(model) columns list the number of non-hydrogen atoms and hydrogen atoms in the chain respectively. The H(added) column lists the number of hydrogen atoms added and optimized by MolProbity. The Clashes column lists the number of clashes within the asymmetric unit, whereas Symm-Clashes lists symmetry related clashes.

Mol	Chain	Non-H	H(model)	H(added)	Clashes	Symm-Clashes
1	A	3618	0	3441	876	0
All	All	3618	0	3441	876	0

The all-atom clashscore is defined as the number of clashes found per 1000 atoms (including hydrogen atoms). The all-atom clashscore for this structure is 124.

The worst 5 of 876 close contacts within the same asymmetric unit are listed below, sorted by their clash magnitude.

Atom-1	Atom-2	Interatomic distance (Å)	Clash overlap (Å)
1:A:567:LEU:CB	1:A:592:LEU:HD13	1.68	1.22
1:A:452:PHE:CE1	1:A:453:LYS:HE2	1.73	1.21
1:A:378:ALA:CB	1:A:432:LEU:HD11	1.70	1.21
1:A:567:LEU:HB3	1:A:592:LEU:CD1	1.71	1.20
1:A:186:LEU:N	1:A:187:PRO:HD3	1.55	1.20

There are no symmetry-related clashes.

5.3 Torsion angles [i](#)

5.3.1 Protein backbone [i](#)

In the following table, the Percentiles column shows the percent Ramachandran outliers of the chain as a percentile score with respect to all X-ray entries followed by that with respect to entries of similar resolution.

The Analysed column shows the number of residues for which the backbone conformation was analysed, and the total number of residues.

Mol	Chain	Analysed	Favoured	Allowed	Outliers	Percentiles
1	A	447/616 (73%)	328 (73%)	96 (22%)	23 (5%)	2 31

5 of 23 Ramachandran outliers are listed below:

Mol	Chain	Res	Type
1	A	177	GLY
1	A	328	TRP
1	A	341	LEU
1	A	345	GLY
1	A	595	PRO

5.3.2 Protein sidechains ⓘ

In the following table, the Percentiles column shows the percent sidechain outliers of the chain as a percentile score with respect to all X-ray entries followed by that with respect to entries of similar resolution.

The Analysed column shows the number of residues for which the sidechain conformation was analysed, and the total number of residues.

Mol	Chain	Analysed	Rotameric	Outliers	Percentiles
1	A	373/518 (72%)	305 (82%)	68 (18%)	2 15

5 of 68 residues with a non-rotameric sidechain are listed below:

Mol	Chain	Res	Type
1	A	322	HIS
1	A	352	GLN
1	A	539	ASP
1	A	323	TRP
1	A	337	VAL

Some sidechains can be flipped to improve hydrogen bonding and reduce clashes. 5 of 11 such sidechains are listed below:

Mol	Chain	Res	Type
1	A	353	HIS
1	A	365	GLN
1	A	442	ASN
1	A	350	ASN
1	A	437	GLN

5.3.3 RNA [i](#)

There are no RNA molecules in this entry.

5.4 Non-standard residues in protein, DNA, RNA chains [i](#)

There are no non-standard protein/DNA/RNA residues in this entry.

5.5 Carbohydrates [i](#)

There are no carbohydrates in this entry.

5.6 Ligand geometry [i](#)

There are no ligands in this entry.

5.7 Other polymers [i](#)

There are no such residues in this entry.

5.8 Polymer linkage issues [i](#)

There are no chain breaks in this entry.

6 Fit of model and data [i](#)

6.1 Protein, DNA and RNA chains [i](#)

In the following table, the column labelled ‘#RSRZ> 2’ contains the number (and percentage) of RSRZ outliers, followed by percent RSRZ outliers for the chain as percentile scores relative to all X-ray entries and entries of similar resolution. The OWAB column contains the minimum, median, 95th percentile and maximum values of the occupancy-weighted average B-factor per residue. The column labelled ‘Q< 0.9’ lists the number of (and percentage) of residues with an average occupancy less than 0.9.

Mol	Chain	Analysed	<RSRZ>	#RSRZ>2	OWAB(Å ²)	Q<0.9
1	A	453/616 (73%)	-0.15	25 (5%) 29 19	58, 130, 178, 222	0

The worst 5 of 25 RSRZ outliers are listed below:

Mol	Chain	Res	Type	RSRZ
1	A	245	LEU	7.6
1	A	202	VAL	5.1
1	A	526	ALA	5.0
1	A	542	VAL	4.6
1	A	249	PHE	4.6

6.2 Non-standard residues in protein, DNA, RNA chains [i](#)

There are no non-standard protein/DNA/RNA residues in this entry.

6.3 Carbohydrates [i](#)

There are no carbohydrates in this entry.

6.4 Ligands [i](#)

There are no ligands in this entry.

6.5 Other polymers [i](#)

There are no such residues in this entry.