



# Full wwPDB X-ray Structure Validation Report ⓘ

Feb 1, 2016 – 03:09 PM GMT

PDB ID : 4BP1  
Title : Crystal Structure of Plasmodium Falciparum Spermidine Synthase in Complex with 5'-Methylthioadenosine and Putrescine  
Authors : Sprenger, J.; Halander, J.C.; Svensson, B.; Al-Karadaghi, S.; Persson, L.  
Deposited on : 2013-05-23  
Resolution : 2.17 Å(reported)

This is a Full wwPDB X-ray Structure Validation Report for a publicly released PDB entry.  
We welcome your comments at [validation@mail.wwpdb.org](mailto:validation@mail.wwpdb.org)  
A user guide is available at  
<http://wwpdb.org/validation/2016/XrayValidationReportHelp>  
with specific help available everywhere you see the ⓘ symbol.

---

The following versions of software and data (see [references ⓘ](#)) were used in the production of this report:

MolProbity : 4.02b-467  
Mogul : 1.7 (RC4), CSD as536be (2015)  
Xtriage (Phenix) : 1.9-1692  
EDS : rb-20026688  
Percentile statistics : 20151230.v01 (using entries in the PDB archive December 30th 2015)  
Refmac : 5.8.0135  
CCP4 : 6.5.0  
Ideal geometry (proteins) : Engh & Huber (2001)  
Ideal geometry (DNA, RNA) : Parkinson et al. (1996)  
Validation Pipeline (wwPDB-VP) : trunk26865

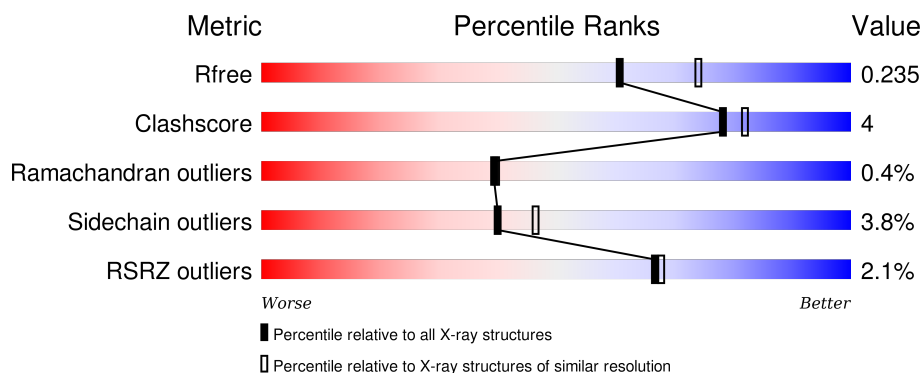
# 1 Overall quality at a glance

The following experimental techniques were used to determine the structure:

## *X-RAY DIFFRACTION*

The reported resolution of this entry is 2.17 Å.

Percentile scores (ranging between 0-100) for global validation metrics of the entry are shown in the following graphic. The table shows the number of entries on which the scores are based.



Metric	Whole archive (#Entries)	Similar resolution (#Entries, resolution range(Å))
$R_{free}$	91344	5130 (2.20-2.16)
Clashscore	102246	5965 (2.20-2.16)
Ramachandran outliers	100387	5863 (2.20-2.16)
Sidechain outliers	100360	5864 (2.20-2.16)
RSRZ outliers	91569	5142 (2.20-2.16)

The table below summarises the geometric issues observed across the polymeric chains and their fit to the electron density. The red, orange, yellow and green segments on the lower bar indicate the fraction of residues that contain outliers for  $\geq 3$ , 2, 1 and 0 types of geometric quality criteria. A grey segment represents the fraction of residues that are not modelled. The numeric value for each fraction is indicated below the corresponding segment, with a dot representing fractions  $\leq 5\%$ . The upper red bar (where present) indicates the fraction of residues that have poor fit to the electron density. The numeric value is given above the bar.

Mol	Chain	Length	Quality of chain
1	A	283	<div> <div>3%</div> <div>89%</div> <div>10%</div> <div>..</div> </div>
1	B	283	<div> <div>2%</div> <div>85%</div> <div>11%</div> <div>..</div> </div>
1	C	283	<div> <div>%</div> <div>92%</div> <div>8%</div> <div>.</div> </div>

The following table lists non-polymeric compounds, carbohydrate monomers and non-standard residues in protein, DNA, RNA chains that are outliers for geometric or electron-density-fit criteria:

Mol	Type	Chain	Res	Chirality	Geometry	Clashes	Electron density
3	PUT	A	601	-	-	-	X
3	PUT	B	601	-	-	-	X
3	PUT	C	601	-	-	-	X
4	GOL	B	701	-	-	-	X
5	1PG	C	702	-	-	-	X

## 2 Entry composition

There are 6 unique types of molecules in this entry. The entry contains 7276 atoms, of which 0 are hydrogens and 0 are deuteriums.

In the tables below, the ZeroOcc column contains the number of atoms modelled with zero occupancy, the AltConf column contains the number of residues with at least one atom in alternate conformation and the Trace column contains the number of residues modelled with at most 2 atoms.

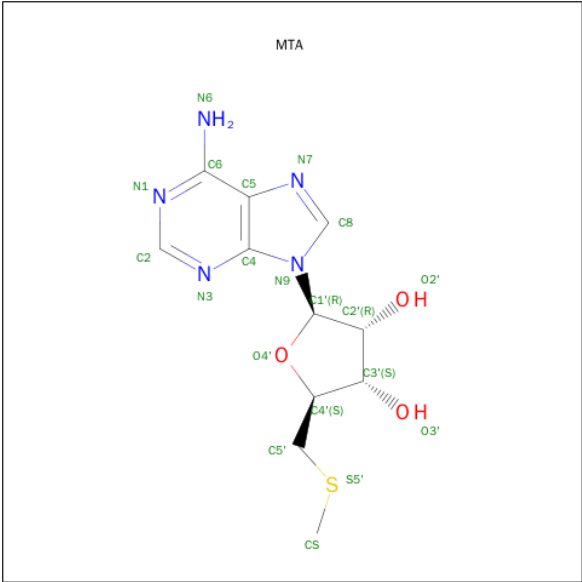
- Molecule 1 is a protein called SPERMIDINE SYNTHASE.

Mol	Chain	Residues	Atoms					ZeroOcc	AltConf	Trace
1	A	281	Total	C	N	O	S	0	0	0
			2254	1463	352	425	14			
1	B	280	Total	C	N	O	S	0	1	0
			2251	1460	352	425	14			
1	C	281	Total	C	N	O	S	0	1	0
			2260	1466	353	427	14			

There are 6 discrepancies between the modelled and reference sequences:

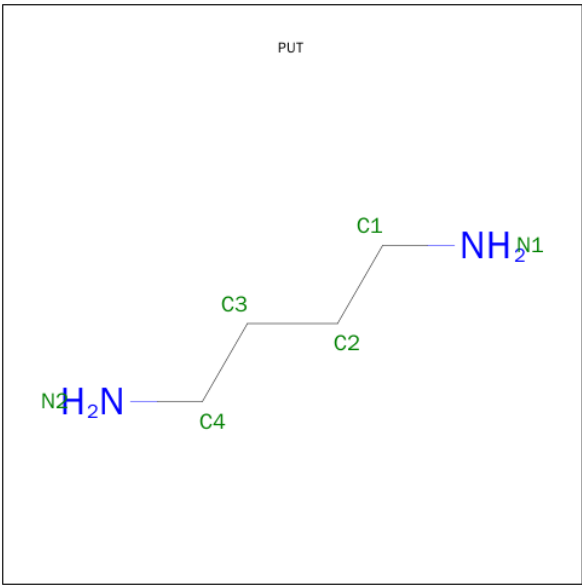
Chain	Residue	Modelled	Actual	Comment	Reference
A	39	GLY	-	EXPRESSION TAG	UNP Q8II73
A	40	SER	-	EXPRESSION TAG	UNP Q8II73
B	39	GLY	-	EXPRESSION TAG	UNP Q8II73
B	40	SER	-	EXPRESSION TAG	UNP Q8II73
C	39	GLY	-	EXPRESSION TAG	UNP Q8II73
C	40	SER	-	EXPRESSION TAG	UNP Q8II73

- Molecule 2 is 5'-DEOXY-5'-METHYLTHIOADENOSINE (three-letter code: MTA) (formula: C<sub>11</sub>H<sub>15</sub>N<sub>5</sub>O<sub>3</sub>S).



Mol	Chain	Residues	Atoms					ZeroOcc	AltConf
2	A	1	Total	C	N	O	S	0	0
			20	11	5	3	1		
2	B	1	Total	C	N	O	S	0	0
			20	11	5	3	1		
2	C	1	Total	C	N	O	S	0	0
			20	11	5	3	1		

- Molecule 3 is 1,4-DIAMINOBUTANE (three-letter code: PUT) (formula: C<sub>4</sub>H<sub>12</sub>N<sub>2</sub>).



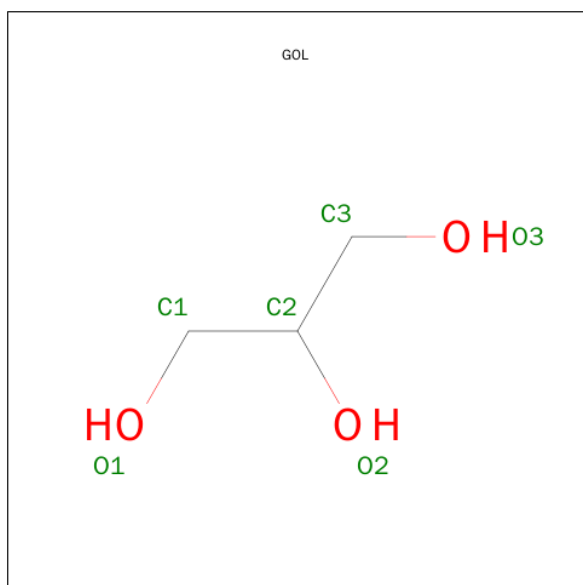
Mol	Chain	Residues	Atoms			ZeroOcc	AltConf
3	A	1	Total	C	N	0	0
			6	4	2		

Continued on next page...

*Continued from previous page...*

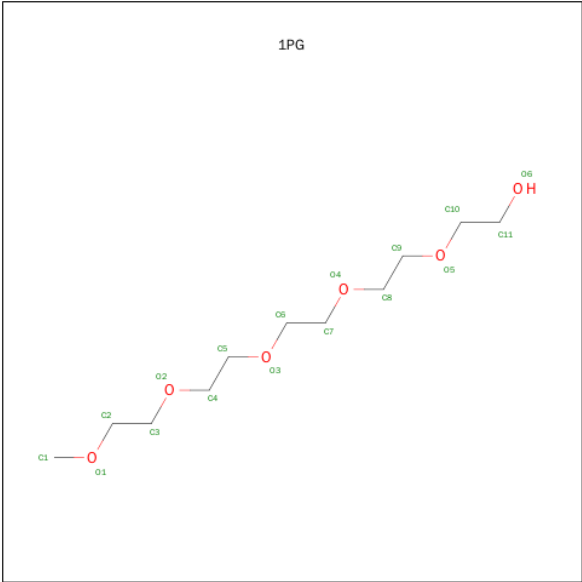
Mol	Chain	Residues	Atoms			ZeroOcc	AltConf
3	B	1	Total	C	N	0	0
			6	4	2		
3	C	1	Total	C	N	0	0
			6	4	2		

- Molecule 4 is GLYCEROL (three-letter code: GOL) (formula:  $C_3H_8O_3$ ).



Mol	Chain	Residues	Atoms			ZeroOcc	AltConf
4	B	1	Total	C	O	0	0
			6	3	3		

- Molecule 5 is 2-(2-{2-[2-(2-METHOXY-ETHOXY)-ETHOXY]-ETHOXY}-ETHOXY)-ETHANOL (three-letter code: 1PG) (formula:  $C_{11}H_{24}O_6$ ).



Mol	Chain	Residues	Atoms			ZeroOcc	AltConf
5	C	1	Total	C	O	0	0
			17	11	6		

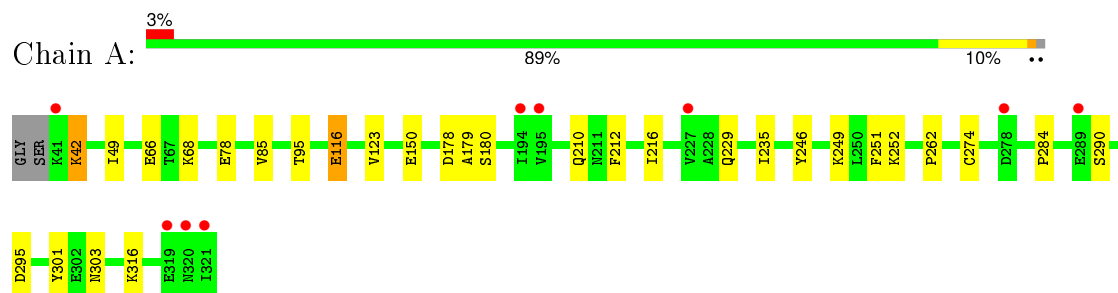
- Molecule 6 is water.

Mol	Chain	Residues	Atoms		ZeroOcc	AltConf
6	A	81	Total	O	0	0
			81	81		
6	B	153	Total	O	0	0
			153	153		
6	C	176	Total	O	0	0
			176	176		

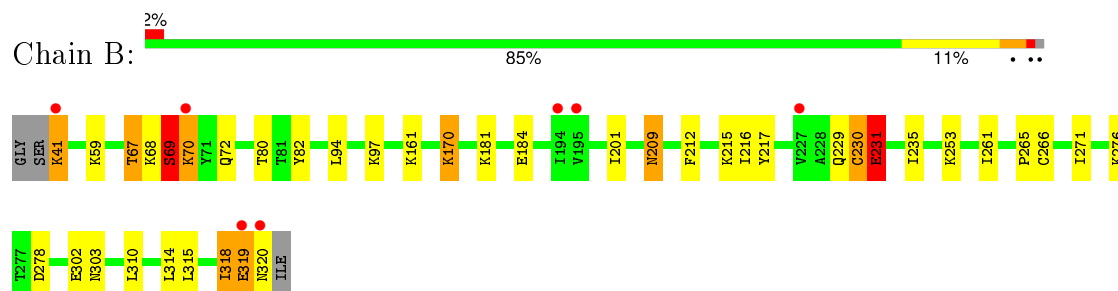
### 3 Residue-property plots [i](#)

These plots are drawn for all protein, RNA and DNA chains in the entry. The first graphic for a chain summarises the proportions of errors displayed in the second graphic. The second graphic shows the sequence view annotated by issues in geometry and electron density. Residues are color-coded according to the number of geometric quality criteria for which they contain at least one outlier: green = 0, yellow = 1, orange = 2 and red = 3 or more. A red dot above a residue indicates a poor fit to the electron density ( $RSRZ > 2$ ). Stretches of 2 or more consecutive residues without any outlier are shown as a green connector. Residues present in the sample, but not in the model, are shown in grey.

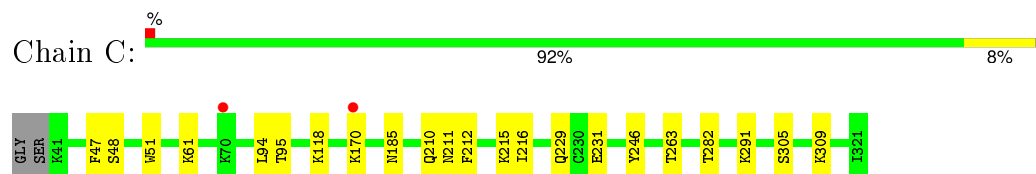
#### • Molecule 1: SPERMIDINE SYNTHASE



#### • Molecule 1: SPERMIDINE SYNTHASE



#### • Molecule 1: SPERMIDINE SYNTHASE





## 4 Data and refinement statistics

Property	Value	Source
Space group	C 1 2 1	Depositor
Cell constants a, b, c, $\alpha$ , $\beta$ , $\gamma$	200.76 Å   134.97 Å   48.60 Å 90.00°   96.00°   90.00°	Depositor
Resolution (Å)	28.65 – 2.17 28.65 – 2.17	Depositor EDS
% Data completeness (in resolution range)	98.7 (28.65-2.17) 98.7 (28.65-2.17)	Depositor EDS
$R_{merge}$	0.12	Depositor
$R_{sym}$	(Not available)	Depositor
$\langle I/\sigma(I) \rangle$ <sup>1</sup>	1.86 (at 2.18 Å)	Xtriage
Refinement program	REFMAC 5.7.0029	Depositor
R, $R_{free}$	0.180   ,   0.231 0.187   ,   0.235	Depositor DCC
$R_{free}$ test set	3441 reflections (5.41%)	DCC
Wilson B-factor (Å <sup>2</sup> )	22.5	Xtriage
Anisotropy	0.125	Xtriage
Bulk solvent $k_{sol}$ (e/Å <sup>3</sup> ), $B_{sol}$ (Å <sup>2</sup> )	0.34 , 42.5	EDS
Estimated twinning fraction	No twinning to report.	Xtriage
L-test for twinning <sup>2</sup>	$\langle  L  \rangle = 0.48$ , $\langle L^2 \rangle = 0.32$	Xtriage
Outliers	0 of 66992 reflections	Xtriage
$F_o, F_c$ correlation	0.94	EDS
Total number of atoms	7276	wwPDB-VP
Average B, all atoms (Å <sup>2</sup> )	28.0	wwPDB-VP

Xtriage's analysis on translational NCS is as follows: *The largest off-origin peak in the Patterson function is 3.79% of the height of the origin peak. No significant pseudotranslation is detected.*

<sup>1</sup>Intensities estimated from amplitudes.

<sup>2</sup>Theoretical values of  $\langle |L| \rangle$ ,  $\langle L^2 \rangle$  for acentric reflections are 0.5, 0.375 respectively for untwinned datasets, and 0.333, 0.2 for perfectly twinned datasets.

## 5 Model quality

### 5.1 Standard geometry

Bond lengths and bond angles in the following residue types are not validated in this section: PUT, GOL, MTA, 1PG

The Z score for a bond length (or angle) is the number of standard deviations the observed value is removed from the expected value. A bond length (or angle) with  $|Z| > 5$  is considered an outlier worth inspection. RMSZ is the root-mean-square of all Z scores of the bond lengths (or angles).

Mol	Chain	Bond lengths		Bond angles	
		RMSZ	$\# Z  > 5$	RMSZ	$\# Z  > 5$
1	A	0.90	0/2304	0.93	2/3111 (0.1%)
1	B	1.02	1/2301 (0.0%)	0.96	1/3108 (0.0%)
1	C	0.99	0/2310	0.97	1/3119 (0.0%)
All	All	0.97	1/6915 (0.0%)	0.95	4/9338 (0.0%)

Chiral center outliers are detected by calculating the chiral volume of a chiral center and verifying if the center is modelled as a planar moiety or with the opposite hand. A planarity outlier is detected by checking planarity of atoms in a peptide group, atoms in a mainchain group or atoms of a sidechain that are expected to be planar.

Mol	Chain	#Chirality outliers	#Planarity outliers
1	B	0	2

All (1) bond length outliers are listed below:

Mol	Chain	Res	Type	Atoms	Z	Observed(Å)	Ideal(Å)
1	B	231	GLU	CG-CD	5.46	1.60	1.51

All (4) bond angle outliers are listed below:

Mol	Chain	Res	Type	Atoms	Z	Observed(°)	Ideal(°)
1	A	303	ASN	CB-CA-C	5.67	121.74	110.40
1	A	295	ASP	CB-CG-OD1	5.51	123.26	118.30
1	B	303	ASN	CB-CA-C	5.37	121.13	110.40
1	C	118	LYS	CB-CA-C	-5.05	100.30	110.40

There are no chirality outliers.

All (2) planarity outliers are listed below:

Mol	Chain	Res	Type	Group
1	B	230	CYS	Peptide
1	B	69	SER	Peptide

## 5.2 Too-close contacts ⓘ

In the following table, the Non-H and H(model) columns list the number of non-hydrogen atoms and hydrogen atoms in the chain respectively. The H(added) column lists the number of hydrogen atoms added and optimized by MolProbity. The Clashes column lists the number of clashes within the asymmetric unit, whereas Symm-Clashes lists symmetry related clashes.

Mol	Chain	Non-H	H(model)	H(added)	Clashes	Symm-Clashes
1	A	2254	0	2265	12	0
1	B	2251	0	2258	29	0
1	C	2260	0	2269	10	0
2	A	20	0	15	0	0
2	B	20	0	15	0	0
2	C	20	0	15	0	0
3	A	6	0	12	0	0
3	B	6	0	12	0	0
3	C	6	0	12	0	0
4	B	6	0	8	0	0
5	C	17	0	24	1	0
6	A	81	0	0	2	0
6	B	153	0	0	4	0
6	C	176	0	0	0	0
All	All	7276	0	6905	49	0

The all-atom clashscore is defined as the number of clashes found per 1000 atoms (including hydrogen atoms). The all-atom clashscore for this structure is 4.

All (49) close contacts within the same asymmetric unit are listed below, sorted by their clash magnitude.

Atom-1	Atom-2	Interatomic distance (Å)	Clash overlap (Å)
1:B:69:SER:OG	1:B:70:LYS:HA	1.23	1.25
1:B:69:SER:OG	1:B:70:LYS:CA	1.88	1.20
1:B:68:LYS:HG3	1:B:69:SER:HB3	1.51	0.91
1:B:69:SER:HG	1:B:70:LYS:HA	1.42	0.81
1:A:68:LYS:O	1:B:161:LYS:NZ	2.22	0.73
1:A:212:PHE:CE2	1:A:216:ILE:HD11	2.26	0.70
1:B:310:LEU:HD13	1:B:314:LEU:HD23	1.76	0.68
1:B:69:SER:OG	1:B:70:LYS:C	2.36	0.64

*Continued on next page...*

*Continued from previous page...*

Atom-1	Atom-2	Interatomic distance (Å)	Clash overlap (Å)
1:A:284:PRO:HG2	1:A:301:TYR:CE1	2.32	0.64
1:B:212:PHE:CE2	1:B:216:ILE:HD11	2.33	0.63
1:B:209:ASN:ND2	1:B:212:PHE:H	2.03	0.57
1:B:59:LYS:HE3	1:B:80:THR:HG21	1.90	0.53
1:B:170:LYS:HG2	6:B:2073:HOH:O	2.08	0.53
1:B:69:SER:HB2	1:B:72:GLN:H	1.74	0.53
1:B:181:LYS:O	1:B:184:GLU:HG2	2.09	0.53
1:B:315:LEU:HD21	6:B:2146:HOH:O	2.09	0.52
1:B:82:TYR:CD2	1:B:97:LYS:HD3	2.45	0.51
1:B:217:TYR:CE2	1:B:276:LYS:HE2	2.46	0.51
1:B:302:GLU:HB3	1:C:309:LYS:HD2	1.92	0.51
1:C:229:GLN:HE21	1:C:231:GLU:H	1.59	0.51
1:A:210:GLN:HE22	1:A:246:TYR:HA	1.75	0.50
1:B:265:PRO:O	1:B:266:CYS:HB2	2.11	0.50
1:C:211:ASN:HD21	1:C:215:LYS:NZ	2.10	0.49
1:B:69:SER:HB2	1:B:72:GLN:N	2.28	0.48
1:A:210:GLN:NE2	1:A:246:TYR:HA	2.29	0.48
1:C:47:PHE:CD1	5:C:702:IPG:H13	2.49	0.48
1:C:94:LEU:HD12	1:C:94:LEU:C	2.35	0.47
1:C:282:THR:O	1:C:305[B]:SER:HB3	2.14	0.47
1:B:94:LEU:C	1:B:94:LEU:HD12	2.35	0.47
1:A:116:GLU:HG2	1:A:116:GLU:O	2.16	0.45
1:A:178:ASP:OD1	1:A:180:SER:HB3	2.16	0.45
1:B:41:LYS:HE3	1:B:41:LYS:HA	1.97	0.45
1:C:212:PHE:CE2	1:C:216:ILE:HD11	2.53	0.44
1:A:42:LYS:HG2	6:A:2003:HOH:O	2.16	0.44
1:C:210:GLN:HE22	1:C:246:TYR:HA	1.83	0.44
1:B:184:GLU:HB3	1:B:215:LYS:HE2	2.00	0.43
1:B:41:LYS:CE	1:B:41:LYS:HA	2.49	0.43
1:C:48:SER:HB3	1:C:51:TRP:CE2	2.53	0.43
1:B:94:LEU:HA	6:B:2038:HOH:O	2.19	0.43
1:B:67:THR:HG23	1:B:68:LYS:N	2.35	0.42
1:A:150:GLU:OE2	6:A:2044:HOH:O	2.21	0.41
1:B:271:ILE:HD13	1:B:271:ILE:HG21	1.89	0.41
1:A:123:VAL:HG13	1:A:179:ALA:HB2	2.02	0.41
1:B:41:LYS:HD2	6:B:2021:HOH:O	2.20	0.41
1:B:318:ILE:O	1:B:319:GLU:C	2.59	0.41
1:A:251:PHE:CD2	1:A:274:CYS:HB3	2.56	0.41
1:C:95:THR:HG21	1:C:263:THR:HG21	2.02	0.41
1:A:85:VAL:HG13	1:A:95:THR:HG22	2.04	0.40
1:B:230:CYS:O	1:B:231:GLU:O	2.39	0.40

There are no symmetry-related clashes.

## 5.3 Torsion angles [i](#)

### 5.3.1 Protein backbone [i](#)

In the following table, the Percentiles column shows the percent Ramachandran outliers of the chain as a percentile score with respect to all X-ray entries followed by that with respect to entries of similar resolution.

The Analysed column shows the number of residues for which the backbone conformation was analysed, and the total number of residues.

Mol	Chain	Analysed	Favoured	Allowed	Outliers	Percentiles	
1	A	279/283 (99%)	262 (94%)	16 (6%)	1 (0%)	39	40
1	B	279/283 (99%)	264 (95%)	13 (5%)	2 (1%)	26	23
1	C	280/283 (99%)	270 (96%)	10 (4%)	0	100	100
All	All	838/849 (99%)	796 (95%)	39 (5%)	3 (0%)	39	40

All (3) Ramachandran outliers are listed below:

Mol	Chain	Res	Type
1	B	69	SER
1	B	319	GLU
1	A	235	ILE

### 5.3.2 Protein sidechains [i](#)

In the following table, the Percentiles column shows the percent sidechain outliers of the chain as a percentile score with respect to all X-ray entries followed by that with respect to entries of similar resolution.

The Analysed column shows the number of residues for which the sidechain conformation was analysed, and the total number of residues.

Mol	Chain	Analysed	Rotameric	Outliers	Percentiles	
1	A	253/254 (100%)	242 (96%)	11 (4%)	35	40
1	B	253/254 (100%)	239 (94%)	14 (6%)	27	28
1	C	254/254 (100%)	250 (98%)	4 (2%)	70	81
All	All	760/762 (100%)	731 (96%)	29 (4%)	40	46

All (29) residues with a non-rotameric sidechain are listed below:

Mol	Chain	Res	Type
1	A	42	LYS
1	A	49	ILE
1	A	66	GLU
1	A	78	GLU
1	A	116	GLU
1	A	229	GLN
1	A	249	LYS
1	A	252	LYS
1	A	262	PRO
1	A	290	SER
1	A	316	LYS
1	B	41	LYS
1	B	67	THR
1	B	70	LYS
1	B	170	LYS
1	B	201	ILE
1	B	209	ASN
1	B	229	GLN
1	B	231	GLU
1	B	235	ILE
1	B	253	LYS
1	B	261	ILE
1	B	278	ASP
1	B	318	ILE
1	B	320	ASN
1	C	61	LYS
1	C	170	LYS
1	C	185	ASN
1	C	291	LYS

Some sidechains can be flipped to improve hydrogen bonding and reduce clashes. All (11) such sidechains are listed below:

Mol	Chain	Res	Type
1	A	142	ASN
1	A	210	GLN
1	A	218	ASN
1	B	142	ASN
1	B	209	ASN
1	B	211	ASN
1	C	73	ASN
1	C	210	GLN
1	C	211	ASN
1	C	229	GLN

*Continued on next page...*

*Continued from previous page...*

Mol	Chain	Res	Type
1	C	285	ASN

### 5.3.3 RNA [i](#)

There are no RNA molecules in this entry.

## 5.4 Non-standard residues in protein, DNA, RNA chains [i](#)

There are no non-standard protein/DNA/RNA residues in this entry.

## 5.5 Carbohydrates [i](#)

There are no carbohydrates in this entry.

## 5.6 Ligand geometry [i](#)

8 ligands are modelled in this entry.

In the following table, the Counts columns list the number of bonds (or angles) for which Mogul statistics could be retrieved, the number of bonds (or angles) that are observed in the model and the number of bonds (or angles) that are defined in the chemical component dictionary. The Link column lists molecule types, if any, to which the group is linked. The Z score for a bond length (or angle) is the number of standard deviations the observed value is removed from the expected value. A bond length (or angle) with  $|Z| > 2$  is considered an outlier worth inspection. RMSZ is the root-mean-square of all Z scores of the bond lengths (or angles).

Mol	Type	Chain	Res	Link	Bond lengths			Bond angles		
					Counts	RMSZ	$\# Z  > 2$	Counts	RMSZ	$\# Z  > 2$
2	MTA	A	501	-	17,22,22	2.00	2 (11%)	17,32,32	3.05	5 (29%)
3	PUT	A	601	-	5,5,5	0.59	0	4,4,4	0.79	0
2	MTA	B	501	-	17,22,22	1.22	2 (11%)	17,32,32	2.03	4 (23%)
3	PUT	B	601	-	5,5,5	0.69	0	4,4,4	0.96	0
4	GOL	B	701	-	5,5,5	0.92	0	5,5,5	0.72	0
2	MTA	C	501	-	17,22,22	1.40	3 (17%)	17,32,32	2.39	5 (29%)
3	PUT	C	601	-	5,5,5	0.15	0	4,4,4	0.59	0
5	1PG	C	702	-	16,16,16	0.64	0	15,15,15	0.68	0

In the following table, the Chirals column lists the number of chiral outliers, the number of chiral centers analysed, the number of these observed in the model and the number defined in the chemical component dictionary. Similar counts are reported in the Torsion and Rings columns. '-' means

no outliers of that kind were identified.

Mol	Type	Chain	Res	Link	Chirals	Torsions	Rings
2	MTA	A	501	-	-	0/3/23/23	0/3/3/3
3	PUT	A	601	-	-	0/3/3/3	0/0/0/0
2	MTA	B	501	-	-	0/3/23/23	0/3/3/3
3	PUT	B	601	-	-	0/3/3/3	0/0/0/0
4	GOL	B	701	-	-	0/4/4/4	0/0/0/0
2	MTA	C	501	-	-	0/3/23/23	0/3/3/3
3	PUT	C	601	-	-	0/3/3/3	0/0/0/0
5	1PG	C	702	-	-	0/14/14/14	0/0/0/0

All (7) bond length outliers are listed below:

Mol	Chain	Res	Type	Atoms	Z	Observed(Å)	Ideal(Å)
2	A	501	MTA	C5'-S5'	-7.04	1.73	1.80
2	C	501	MTA	C5'-S5'	-3.99	1.76	1.80
2	C	501	MTA	C5-C4	2.13	1.45	1.40
2	C	501	MTA	C2-N3	2.27	1.36	1.32
2	B	501	MTA	C2-N3	2.38	1.36	1.32
2	A	501	MTA	C5-C4	2.60	1.46	1.40
2	B	501	MTA	C5-C4	2.84	1.46	1.40

All (14) bond angle outliers are listed below:

Mol	Chain	Res	Type	Atoms	Z	Observed(°)	Ideal(°)
2	A	501	MTA	N3-C2-N1	-8.58	122.32	128.89
2	A	501	MTA	C4'-O4'-C1'	-5.97	103.16	109.72
2	B	501	MTA	N3-C2-N1	-5.67	124.56	128.89
2	C	501	MTA	N3-C2-N1	-5.01	125.06	128.89
2	C	501	MTA	CS-S5'-C5'	-4.92	93.21	101.21
2	C	501	MTA	C4'-O4'-C1'	-4.20	105.10	109.72
2	A	501	MTA	C1'-N9-C4	-3.94	120.99	126.94
2	B	501	MTA	C4'-O4'-C1'	-3.16	106.25	109.72
2	C	501	MTA	C4-C5-N7	-2.87	106.84	109.48
2	B	501	MTA	N6-C6-N1	2.09	123.68	119.20
2	B	501	MTA	O4'-C4'-C5'	2.54	115.78	108.85
2	C	501	MTA	O4'-C1'-N9	2.55	113.44	108.10
2	A	501	MTA	CS-S5'-C5'	2.83	105.80	101.21
2	A	501	MTA	C2-N1-C6	3.90	125.73	118.77

There are no chirality outliers.

There are no torsion outliers.

There are no ring outliers.



1 monomer is involved in 1 short contact:

Mol	Chain	Res	Type	Clashes	Symm-Clashes
5	C	702	1PG	1	0

## 5.7 Other polymers [i](#)

There are no such residues in this entry.

## 5.8 Polymer linkage issues [i](#)

There are no chain breaks in this entry.

## 6 Fit of model and data ⓘ

### 6.1 Protein, DNA and RNA chains ⓘ

In the following table, the column labelled ‘#RSRZ> 2’ contains the number (and percentage) of RSRZ outliers, followed by percent RSRZ outliers for the chain as percentile scores relative to all X-ray entries and entries of similar resolution. The OWAB column contains the minimum, median, 95<sup>th</sup> percentile and maximum values of the occupancy-weighted average B-factor per residue. The column labelled ‘Q< 0.9’ lists the number of (and percentage) of residues with an average occupancy less than 0.9.

Mol	Chain	Analysed	<RSRZ>	#RSRZ>2	OWAB(Å <sup>2</sup> )	Q<0.9
1	A	281/283 (99%)	0.00	9 (3%) 51 53	22, 32, 55, 75	0
1	B	280/283 (98%)	-0.34	7 (2%) 61 62	12, 22, 45, 87	0
1	C	281/283 (99%)	-0.44	2 (0%) 89 89	12, 20, 39, 55	0
All	All	842/849 (99%)	-0.26	18 (2%) 67 68	12, 25, 48, 87	0

All (18) RSRZ outliers are listed below:

Mol	Chain	Res	Type	RSRZ
1	B	319	GLU	3.8
1	A	321	ILE	3.2
1	B	320	ASN	2.9
1	A	195	VAL	2.9
1	A	320	ASN	2.7
1	B	195	VAL	2.7
1	C	170	LYS	2.7
1	A	227	VAL	2.7
1	A	41	LYS	2.4
1	A	289	GLU	2.3
1	A	278	ASP	2.2
1	B	227	VAL	2.2
1	B	70	LYS	2.1
1	B	41	LYS	2.1
1	A	319	GLU	2.1
1	B	194	ILE	2.0
1	C	70	LYS	2.0
1	A	194	ILE	2.0

### 6.2 Non-standard residues in protein, DNA, RNA chains ⓘ

There are no non-standard protein/DNA/RNA residues in this entry.

### 6.3 Carbohydrates [i](#)

There are no carbohydrates in this entry.

### 6.4 Ligands [i](#)

In the following table, the Atoms column lists the number of modelled atoms in the group and the number defined in the chemical component dictionary. LLDF column lists the quality of electron density of the group with respect to its neighbouring residues in protein, DNA or RNA chains. The B-factors column lists the minimum, median, 95<sup>th</sup> percentile and maximum values of B factors of atoms in the group. The column labelled 'Q< 0.9' lists the number of atoms with occupancy less than 0.9.

Mol	Type	Chain	Res	Atoms	RSCC	RSR	LLDF	B-factors(Å <sup>2</sup> )	Q<0.9
5	1PG	C	702	17/17	0.89	0.20	5.95	35,49,74,77	0
3	PUT	A	601	6/6	0.89	0.38	5.43	41,42,45,45	0
3	PUT	C	601	6/6	0.97	0.29	4.21	22,22,23,25	0
3	PUT	B	601	6/6	0.93	0.27	4.18	22,24,25,27	0
4	GOL	B	701	6/6	0.92	0.13	4.02	30,41,43,48	0
2	MTA	C	501	20/20	0.98	0.10	-0.06	16,17,21,21	0
2	MTA	B	501	20/20	0.98	0.08	-0.60	18,21,23,25	0
2	MTA	A	501	20/20	0.97	0.09	-0.94	20,21,31,31	0

### 6.5 Other polymers [i](#)

There are no such residues in this entry.