



wwPDB X-ray Structure Validation Summary Report ⓘ

Feb 1, 2016 – 03:10 PM GMT

PDB ID : 4BRF
Title : Legionella pneumophila NTPDase1 crystal form II (closed) in complex with a distorted orthomolybdate ion and AMP
Authors : Zebisch, M.; Schaefer, P.; Lauble, P.; Straeter, N.
Deposited on : 2013-06-04
Resolution : 1.60 Å(reported)

This is a wwPDB X-ray Structure Validation Summary Report for a publicly released PDB entry.
We welcome your comments at validation@mail.wwpdb.org
A user guide is available at
<http://wwpdb.org/validation/2016/XrayValidationReportHelp>
with specific help available everywhere you see the ⓘ symbol.

The following versions of software and data (see [references ⓘ](#)) were used in the production of this report:

MolProbity : 4.02b-467
Mogul : 1.7 (RC4), CSD as536be (2015)
Xtriage (Phenix) : 1.9-1692
EDS : rb-20026688
Percentile statistics : 20151230.v01 (using entries in the PDB archive December 30th 2015)
Refmac : 5.8.0135
CCP4 : 6.5.0
Ideal geometry (proteins) : Engh & Huber (2001)
Ideal geometry (DNA, RNA) : Parkinson et al. (1996)
Validation Pipeline (wwPDB-VP) : trunk26865

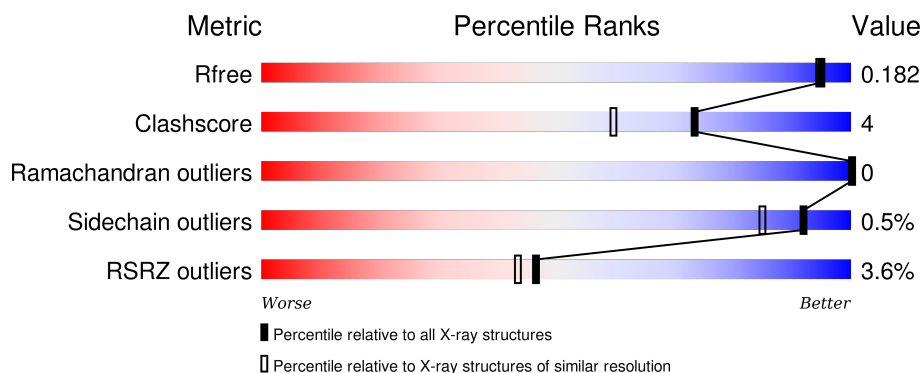
1 Overall quality at a glance

The following experimental techniques were used to determine the structure:

X-RAY DIFFRACTION

The reported resolution of this entry is 1.60 Å.

Percentile scores (ranging between 0-100) for global validation metrics of the entry are shown in the following graphic. The table shows the number of entries on which the scores are based.



Metric	Whole archive (#Entries)	Similar resolution (#Entries, resolution range(Å))
R_{free}	91344	2475 (1.60-1.60)
Clashscore	102246	2732 (1.60-1.60)
Ramachandran outliers	100387	2654 (1.60-1.60)
Sidechain outliers	100360	2653 (1.60-1.60)
RSRZ outliers	91569	2479 (1.60-1.60)

The table below summarises the geometric issues observed across the polymeric chains and their fit to the electron density. The red, orange, yellow and green segments on the lower bar indicate the fraction of residues that contain outliers for ≥ 3 , 2, 1 and 0 types of geometric quality criteria. A grey segment represents the fraction of residues that are not modelled. The numeric value for each fraction is indicated below the corresponding segment, with a dot representing fractions $\leq 5\%$. The upper red bar (where present) indicates the fraction of residues that have poor fit to the electron density. The numeric value is given above the bar.

Mol	Chain	Length	Quality of chain
1	A	368	<div> <div>4%</div> <div>89%</div> <div>8%</div> <div>.</div> </div>
1	B	368	<div> <div>3%</div> <div>86%</div> <div>11%</div> <div>.</div> </div>

The following table lists non-polymeric compounds, carbohydrate monomers and non-standard residues in protein, DNA, RNA chains that are outliers for geometric or electron-density-fit criteria:

Mol	Type	Chain	Res	Chirality	Geometry	Clashes	Electron density
3	MG	B	1401	-	-	-	X
7	M27	A	1401	-	-	X	-

2 Entry composition

There are 11 unique types of molecules in this entry. The entry contains 6577 atoms, of which 0 are hydrogens and 0 are deuteriums.

In the tables below, the ZeroOcc column contains the number of atoms modelled with zero occupancy, the AltConf column contains the number of residues with at least one atom in alternate conformation and the Trace column contains the number of residues modelled with at most 2 atoms.

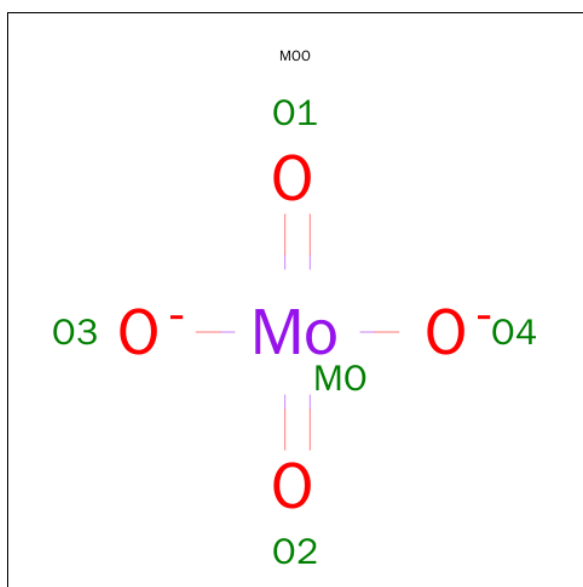
- Molecule 1 is a protein called ECTONUCLEOSIDE TRIPHOSPHATE DIPHOSPHOHYDROLASE I.

Mol	Chain	Residues	Atoms					ZeroOcc	AltConf	Trace
1	A	358	Total	C	N	O	S	0	19	0
			2965	1886	490	574	15			
1	B	358	Total	C	N	O	S	0	21	0
			2975	1899	484	578	14			

There are 22 discrepancies between the modelled and reference sequences:

Chain	Residue	Modelled	Actual	Comment	Reference
A	34	MET	-	EXPRESSION TAG	UNP Q5ZUA2
A	394	LEU	-	EXPRESSION TAG	UNP Q5ZUA2
A	395	GLU	-	EXPRESSION TAG	UNP Q5ZUA2
A	396	HIS	-	EXPRESSION TAG	UNP Q5ZUA2
A	397	HIS	-	EXPRESSION TAG	UNP Q5ZUA2
A	398	HIS	-	EXPRESSION TAG	UNP Q5ZUA2
A	399	HIS	-	EXPRESSION TAG	UNP Q5ZUA2
A	400	HIS	-	EXPRESSION TAG	UNP Q5ZUA2
A	401	HIS	-	EXPRESSION TAG	UNP Q5ZUA2
A	137	ASP	GLU	CONFLICT	UNP Q5ZUA2
A	149	VAL	ALA	CONFLICT	UNP Q5ZUA2
B	34	MET	-	EXPRESSION TAG	UNP Q5ZUA2
B	394	LEU	-	EXPRESSION TAG	UNP Q5ZUA2
B	395	GLU	-	EXPRESSION TAG	UNP Q5ZUA2
B	396	HIS	-	EXPRESSION TAG	UNP Q5ZUA2
B	397	HIS	-	EXPRESSION TAG	UNP Q5ZUA2
B	398	HIS	-	EXPRESSION TAG	UNP Q5ZUA2
B	399	HIS	-	EXPRESSION TAG	UNP Q5ZUA2
B	400	HIS	-	EXPRESSION TAG	UNP Q5ZUA2
B	401	HIS	-	EXPRESSION TAG	UNP Q5ZUA2
B	137	ASP	GLU	CONFLICT	UNP Q5ZUA2
B	149	VAL	ALA	CONFLICT	UNP Q5ZUA2

- Molecule 2 is MOLYBDATE ION (three-letter code: MOO) (formula: MoO₄).



Mol	Chain	Residues	Atoms			ZeroOcc	AltConf
2	A	1	Total	Mo	O	0	0
			5	1	4		
2	B	1	Total	Mo	O	0	0
			5	1	4		

- Molecule 3 is MAGNESIUM ION (three-letter code: MG) (formula: Mg).

Mol	Chain	Residues	Atoms		ZeroOcc	AltConf
3	B	3	Total	Mg	0	0
			3	3		
3	A	3	Total	Mg	0	0
			3	3		

- Molecule 4 is 2-(N-MORPHOLINO)-ETHANESULFONIC ACID (three-letter code: MES) (formula: C₆H₁₃NO₄S).

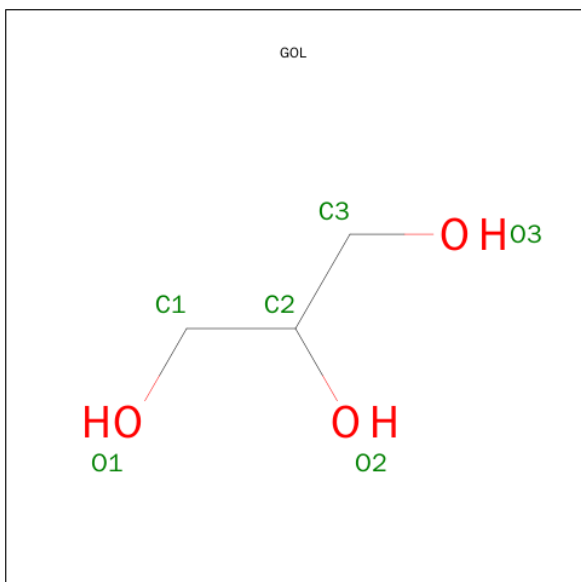


Mol	Chain	Residues	Atoms					ZeroOcc	AltConf
4	A	1	Total	C	N	O	S	0	0
			12	6	1	4	1		
4	B	1	Total	C	N	O	S	0	0
			12	6	1	4	1		

- Molecule 5 is SODIUM ION (three-letter code: NA) (formula: Na).

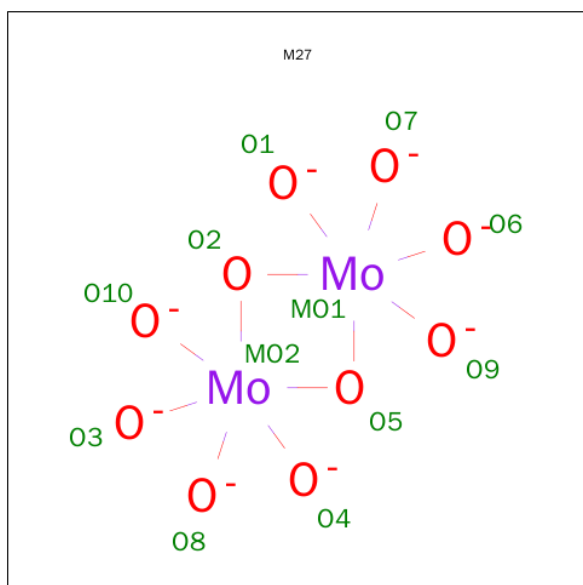
Mol	Chain	Residues	Atoms		ZeroOcc	AltConf
5	A	1	Total	Na	0	0
			1	1		

- Molecule 6 is GLYCEROL (three-letter code: GOL) (formula: C₃H₈O₃).



Mol	Chain	Residues	Atoms			ZeroOcc	AltConf
6	A	1	Total	C	O	0	0
			6	3	3		
6	B	1	Total	C	O	0	0
			6	3	3		

- Molecule 7 is BIS(MU2-OXO)-OCTAOXO-DIMOLYBDENUM (VI) (three-letter code: M27) (formula: Mo_2O_{10}).



Mol	Chain	Residues	Atoms			ZeroOcc	AltConf
7	A	1	Total	Mo	O	0	0
			8	2	6		

- Molecule 8 is 1,2-ETHANEDIOL (three-letter code: EDO) (formula: $\text{C}_2\text{H}_6\text{O}_2$).

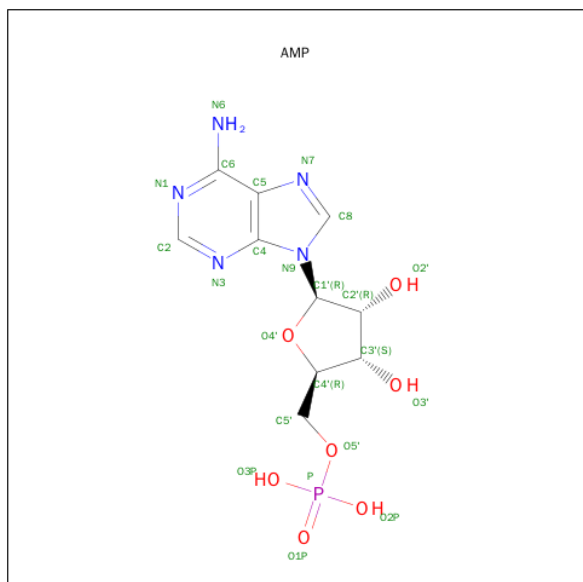


Mol	Chain	Residues	Atoms			ZeroOcc	AltConf
8	A	1	Total	C	O	0	0
			4	2	2		

- Molecule 9 is CHLORIDE ION (three-letter code: CL) (formula: Cl).

Mol	Chain	Residues	Atoms		ZeroOcc	AltConf
9	B	1	Total	Cl	0	0
			1	1		
9	A	1	Total	Cl	0	0
			1	1		

- Molecule 10 is ADENOSINE MONOPHOSPHATE (three-letter code: AMP) (formula: C₁₀H₁₄N₅O₇P).



Mol	Chain	Residues	Atoms					ZeroOcc	AltConf
10	B	1	Total	C	N	O	P	0	0
			23	10	5	7	1		

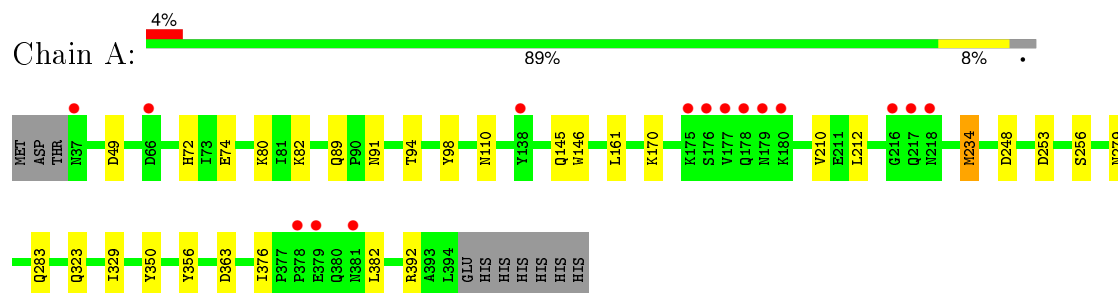
- Molecule 11 is water.

Mol	Chain	Residues	Atoms		ZeroOcc	AltConf
11	A	302	Total	O	0	0
			302	302		
11	B	245	Total	O	0	0
			245	245		

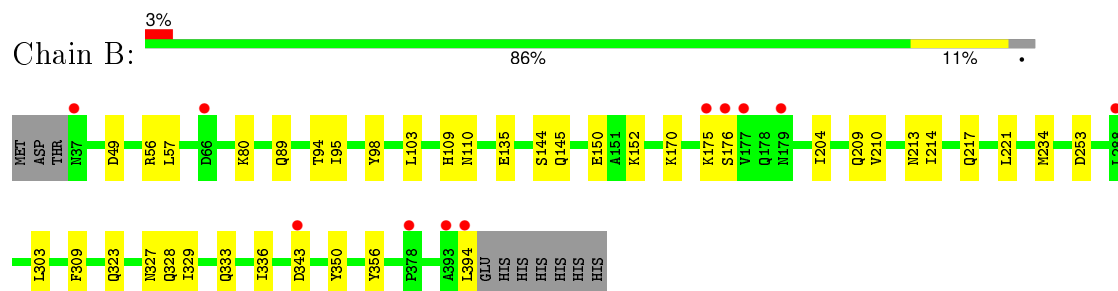
3 Residue-property plots [i](#)

These plots are drawn for all protein, RNA and DNA chains in the entry. The first graphic for a chain summarises the proportions of errors displayed in the second graphic. The second graphic shows the sequence view annotated by issues in geometry and electron density. Residues are color-coded according to the number of geometric quality criteria for which they contain at least one outlier: green = 0, yellow = 1, orange = 2 and red = 3 or more. A red dot above a residue indicates a poor fit to the electron density ($\text{RSRZ} > 2$). Stretches of 2 or more consecutive residues without any outlier are shown as a green connector. Residues present in the sample, but not in the model, are shown in grey.

- Molecule 1: ECTONUCLEOSIDE TRIPHOSPHATE DIPHOSPHOHYDROLASE I



- Molecule 1: ECTONUCLEOSIDE TRIPHOSPHATE DIPHOSPHOHYDROLASE I



4 Data and refinement statistics

Property	Value	Source
Space group	P 1 21 1	Depositor
Cell constants a, b, c, α , β , γ	62.14Å 85.97Å 71.89Å 90.00° 106.14° 90.00°	Depositor
Resolution (Å)	29.87 – 1.60 29.28 – 1.60	Depositor EDS
% Data completeness (in resolution range)	97.9 (29.87-1.60) 98.0 (29.28-1.60)	Depositor EDS
R_{merge}	0.07	Depositor
R_{sym}	(Not available)	Depositor
$\langle I/\sigma(I) \rangle$ ¹	2.05 (at 1.60Å)	Xtriage
Refinement program	REFMAC 5.7.0029	Depositor
R, R_{free}	0.125 , 0.184 0.123 , 0.182	Depositor DCC
R_{free} test set	1417 reflections (1.53%)	DCC
Wilson B-factor (Å ²)	16.8	Xtriage
Anisotropy	0.306	Xtriage
Bulk solvent k_{sol} (e/Å ³), B_{sol} (Å ²)	0.42 , 54.3	EDS
Estimated twinning fraction	No twinning to report.	Xtriage
L-test for twinning ²	$\langle L \rangle = 0.49$, $\langle L^2 \rangle = 0.32$	Xtriage
Outliers	0 of 93793 reflections	Xtriage
F_o, F_c correlation	0.98	EDS
Total number of atoms	6577	wwPDB-VP
Average B, all atoms (Å ²)	23.0	wwPDB-VP

Xtriage's analysis on translational NCS is as follows: *The largest off-origin peak in the Patterson function is 6.03% of the height of the origin peak. No significant pseudotranslation is detected.*

¹Intensities estimated from amplitudes.

²Theoretical values of $\langle |L| \rangle$, $\langle L^2 \rangle$ for acentric reflections are 0.5, 0.375 respectively for untwinned datasets, and 0.333, 0.2 for perfectly twinned datasets.

5 Model quality [i](#)

5.1 Standard geometry [i](#)

Bond lengths and bond angles in the following residue types are not validated in this section: GOL, MG, CL, NA, M27, EDO, MOO, MES, AMP

The Z score for a bond length (or angle) is the number of standard deviations the observed value is removed from the expected value. A bond length (or angle) with $|Z| > 5$ is considered an outlier worth inspection. RMSZ is the root-mean-square of all Z scores of the bond lengths (or angles).

Mol	Chain	Bond lengths		Bond angles	
		RMSZ	$\# Z > 5$	RMSZ	$\# Z > 5$
1	A	1.02	2/3081 (0.1%)	0.86	6/4198 (0.1%)
1	B	1.00	3/3099 (0.1%)	0.85	4/4224 (0.1%)
All	All	1.01	5/6180 (0.1%)	0.86	10/8422 (0.1%)

All (5) bond length outliers are listed below:

Mol	Chain	Res	Type	Atoms	Z	Observed(Å)	Ideal(Å)
1	A	146	TRP	CZ3-CH2	5.55	1.49	1.40
1	A	98	TYR	CE1-CZ	5.41	1.45	1.38
1	B	98	TYR	CG-CD1	5.14	1.45	1.39
1	B	144	SER	CB-OG	5.05	1.48	1.42
1	B	253	ASP	CB-CG	5.02	1.62	1.51

The worst 5 of 10 bond angle outliers are listed below:

Mol	Chain	Res	Type	Atoms	Z	Observed(°)	Ideal(°)
1	A	212	LEU	CB-CG-CD2	-8.75	96.12	111.00
1	A	392	ARG	NE-CZ-NH2	-8.57	116.02	120.30
1	B	234	MET	CG-SD-CE	8.39	113.62	100.20
1	A	392	ARG	NE-CZ-NH1	7.13	123.87	120.30
1	B	49	ASP	CB-CG-OD2	-6.21	112.71	118.30

There are no chirality outliers.

There are no planarity outliers.

5.2 Too-close contacts [i](#)

In the following table, the Non-H and H(model) columns list the number of non-hydrogen atoms and hydrogen atoms in the chain respectively. The H(added) column lists the number of hydrogen

atoms added and optimized by MolProbity. The Clashes column lists the number of clashes within the asymmetric unit, whereas Symm-Clashes lists symmetry related clashes.

Mol	Chain	Non-H	H(model)	H(added)	Clashes	Symm-Clashes
1	A	2965	0	2852	14	0
1	B	2975	0	2874	24	0
2	A	5	0	0	1	0
2	B	5	0	0	0	0
3	A	3	0	0	0	0
3	B	3	0	0	0	0
4	A	12	0	13	2	0
4	B	12	0	13	2	0
5	A	1	0	0	0	0
6	A	6	0	8	0	0
6	B	6	0	8	1	0
7	A	8	0	0	5	0
8	A	4	0	4	0	0
9	A	1	0	0	0	0
9	B	1	0	0	0	0
10	B	23	0	12	0	0
11	A	302	0	0	5	0
11	B	245	0	0	5	0
All	All	6577	0	5784	48	0

The all-atom clashscore is defined as the number of clashes found per 1000 atoms (including hydrogen atoms). The all-atom clashscore for this structure is 4.

The worst 5 of 48 close contacts within the same asymmetric unit are listed below, sorted by their clash magnitude.

Atom-1	Atom-2	Interatomic distance (Å)	Clash overlap (Å)
1:B:323[B]:GLN:NE2	11:B:2211:HOH:O	2.11	0.81
4:A:1397:MES:O2S	11:A:2159:HOH:O	2.09	0.70
1:A:80:LYS:HE3	1:A:82:LYS:HE2	1.72	0.69
1:A:279[B]:ASN:O	1:A:283[B]:GLN:HB2	1.94	0.68
1:B:210[B]:VAL:HG23	1:B:221:LEU:HB2	1.80	0.64

There are no symmetry-related clashes.

5.3 Torsion angles

5.3.1 Protein backbone

In the following table, the Percentiles column shows the percent Ramachandran outliers of the chain as a percentile score with respect to all X-ray entries followed by that with respect to entries of similar resolution.

The Analysed column shows the number of residues for which the backbone conformation was analysed, and the total number of residues.

Mol	Chain	Analysed	Favoured	Allowed	Outliers	Percentiles	
1	A	375/368 (102%)	362 (96%)	13 (4%)	0	100	100
1	B	377/368 (102%)	366 (97%)	11 (3%)	0	100	100
All	All	752/736 (102%)	728 (97%)	24 (3%)	0	100	100

There are no Ramachandran outliers to report.

5.3.2 Protein sidechains

In the following table, the Percentiles column shows the percent sidechain outliers of the chain as a percentile score with respect to all X-ray entries followed by that with respect to entries of similar resolution.

The Analysed column shows the number of residues for which the sidechain conformation was analysed, and the total number of residues.

Mol	Chain	Analysed	Rotameric	Outliers	Percentiles	
1	A	337/328 (103%)	334 (99%)	3 (1%)	84	71
1	B	339/328 (103%)	338 (100%)	1 (0%)	94	90
All	All	676/656 (103%)	672 (99%)	4 (1%)	92	82

All (4) residues with a non-rotameric sidechain are listed below:

Mol	Chain	Res	Type
1	A	234[A]	MET
1	A	234[B]	MET
1	A	323	GLN
1	B	356	TYR

Some sidechains can be flipped to improve hydrogen bonding and reduce clashes. 5 of 6 such sidechains are listed below:

Mol	Chain	Res	Type
1	A	323	GLN
1	B	370	ASN
1	B	217	GLN
1	A	145	GLN
1	B	327	ASN

5.3.3 RNA ⓘ

There are no RNA molecules in this entry.

5.4 Non-standard residues in protein, DNA, RNA chains ⓘ

There are no non-standard protein/DNA/RNA residues in this entry.

5.5 Carbohydrates ⓘ

There are no carbohydrates in this entry.

5.6 Ligand geometry ⓘ

Of 18 ligands modelled in this entry, 9 are monoatomic - leaving 9 for Mogul analysis.

In the following table, the Counts columns list the number of bonds (or angles) for which Mogul statistics could be retrieved, the number of bonds (or angles) that are observed in the model and the number of bonds (or angles) that are defined in the chemical component dictionary. The Link column lists molecule types, if any, to which the group is linked. The Z score for a bond length (or angle) is the number of standard deviations the observed value is removed from the expected value. A bond length (or angle) with $|Z| > 2$ is considered an outlier worth inspection. RMSZ is the root-mean-square of all Z scores of the bond lengths (or angles).

Mol	Type	Chain	Res	Link	Bond lengths			Bond angles		
					Counts	RMSZ	# Z > 2	Counts	RMSZ	# Z > 2
2	MOO	A	1395	11,3	2,4,4	0.38	0	0,6,6	0.00	-
4	MES	A	1397	-	11,12,12	0.64	0	14,16,16	2.86	5 (35%)
6	GOL	A	1400	3	5,5,5	1.22	1 (20%)	5,5,5	1.06	1 (20%)
7	M27	A	1401	1,8	0,7,12	0.00	-	0,10,32	0.00	-
8	EDO	A	1402	7	3,3,3	0.71	0	2,2,2	0.64	0
2	MOO	B	1396	11,3	2,4,4	2.07	1 (50%)	0,6,6	0.00	-
4	MES	B	1398	-	11,12,12	1.06	1 (9%)	14,16,16	2.71	6 (42%)
10	AMP	B	1399	-	20,25,25	1.36	3 (15%)	22,38,38	2.19	5 (22%)
6	GOL	B	1400	-	5,5,5	0.66	0	5,5,5	0.69	0

In the following table, the Chirals column lists the number of chiral outliers, the number of chiral centers analysed, the number of these observed in the model and the number defined in the chemical component dictionary. Similar counts are reported in the Torsion and Rings columns. '-' means no outliers of that kind were identified.

Mol	Type	Chain	Res	Link	Chirals	Torsions	Rings
2	MOO	A	1395	11,3	-	0/0/0/0	0/0/0/0
4	MES	A	1397	-	-	0/6/14/14	0/1/1/1
6	GOL	A	1400	3	-	0/4/4/4	0/0/0/0
7	M27	A	1401	1,8	-	0/0/5/20	0/0/0/1
8	EDO	A	1402	7	-	0/1/1/1	0/0/0/0
2	MOO	B	1396	11,3	-	0/0/0/0	0/0/0/0
4	MES	B	1398	-	-	0/6/14/14	0/1/1/1
10	AMP	B	1399	-	-	0/6/26/26	0/3/3/3
6	GOL	B	1400	-	-	0/4/4/4	0/0/0/0

The worst 5 of 6 bond length outliers are listed below:

Mol	Chain	Res	Type	Atoms	Z	Observed(Å)	Ideal(Å)
4	B	1398	MES	O2S-S	2.13	1.51	1.45
10	B	1399	AMP	O4'-C1'	2.20	1.44	1.41
6	A	1400	GOL	O2-C2	2.25	1.50	1.43
10	B	1399	AMP	O3'-C3'	2.52	1.49	1.43
2	B	1396	MOO	O1-MO	2.72	1.80	1.73

The worst 5 of 17 bond angle outliers are listed below:

Mol	Chain	Res	Type	Atoms	Z	Observed(°)	Ideal(°)
10	B	1399	AMP	N3-C2-N1	-6.40	123.99	128.89
4	A	1397	MES	O3S-S-O2S	-5.19	99.52	111.61
10	B	1399	AMP	C1'-N9-C4	-4.40	120.30	126.94
4	A	1397	MES	O2S-S-C8	-3.20	104.17	106.91
10	B	1399	AMP	C4-C5-N7	-2.74	106.96	109.48

There are no chirality outliers.

There are no torsion outliers.

There are no ring outliers.

5 monomers are involved in 11 short contacts:

Mol	Chain	Res	Type	Clashes	Symm-Clashes
2	A	1395	MOO	1	0
4	A	1397	MES	2	0
7	A	1401	M27	5	0

Continued on next page...

Continued from previous page...

Mol	Chain	Res	Type	Clashes	Symm-Clashes
4	B	1398	MES	2	0
6	B	1400	GOL	1	0

5.7 Other polymers [i](#)

There are no such residues in this entry.

5.8 Polymer linkage issues [i](#)

There are no chain breaks in this entry.

6 Fit of model and data [i](#)

6.1 Protein, DNA and RNA chains [i](#)

In the following table, the column labelled ‘#RSRZ> 2’ contains the number (and percentage) of RSRZ outliers, followed by percent RSRZ outliers for the chain as percentile scores relative to all X-ray entries and entries of similar resolution. The OWAB column contains the minimum, median, 95th percentile and maximum values of the occupancy-weighted average B-factor per residue. The column labelled ‘Q< 0.9’ lists the number of (and percentage) of residues with an average occupancy less than 0.9.

Mol	Chain	Analysed	<RSRZ>	#RSRZ>2	OWAB(Å ²)	Q<0.9
1	A	358/368 (97%)	-0.14	15 (4%) 40 36	10, 19, 44, 82	0
1	B	358/368 (97%)	-0.05	11 (3%) 52 50	10, 20, 44, 80	0
All	All	716/736 (97%)	-0.10	26 (3%) 46 43	10, 19, 44, 82	0

The worst 5 of 26 RSRZ outliers are listed below:

Mol	Chain	Res	Type	RSRZ
1	B	179	ASN	6.8
1	A	179	ASN	6.5
1	A	378	PRO	5.8
1	A	177	VAL	5.6
1	B	175	LYS	5.3

6.2 Non-standard residues in protein, DNA, RNA chains [i](#)

There are no non-standard protein/DNA/RNA residues in this entry.

6.3 Carbohydrates [i](#)

There are no carbohydrates in this entry.

6.4 Ligands [i](#)

In the following table, the Atoms column lists the number of modelled atoms in the group and the number defined in the chemical component dictionary. LLDF column lists the quality of electron density of the group with respect to its neighbouring residues in protein, DNA or RNA chains. The B-factors column lists the minimum, median, 95th percentile and maximum values of B factors of atoms in the group. The column labelled ‘Q< 0.9’ lists the number of atoms with occupancy less than 0.9.

Mol	Type	Chain	Res	Atoms	RSCC	RSR	LLDF	B-factors(\AA^2)	Q<0.9
3	MG	B	1401	1/1	0.99	0.19	4.28	36,36,36,36	0
3	MG	A	1396	1/1	1.00	0.08	1.52	13,13,13,13	0
6	GOL	A	1400	6/6	0.92	0.09	1.34	27,29,31,31	0
10	AMP	B	1399	23/23	0.93	0.14	1.32	21,31,70,121	0
4	MES	B	1398	12/12	0.98	0.08	0.73	21,28,42,42	12
4	MES	A	1397	12/12	0.97	0.09	0.44	28,33,39,56	12
9	CL	B	1395	1/1	0.99	0.09	0.27	32,32,32,32	0
6	GOL	B	1400	6/6	0.98	0.10	0.16	19,25,34,40	0
3	MG	A	1404	1/1	1.00	0.06	-0.03	43,43,43,43	0
9	CL	A	1403	1/1	1.00	0.08	-0.07	22,22,22,22	0
3	MG	B	1397	1/1	1.00	0.07	-0.69	14,14,14,14	0
2	MOO	B	1396	5/5	1.00	0.07	-0.75	12,13,14,16	0
7	M27	A	1401	8/12	1.00	0.06	-0.99	18,23,26,28	8
3	MG	A	1399	1/1	0.99	0.04	-1.04	36,36,36,36	0
2	MOO	A	1395	5/5	1.00	0.06	-1.47	11,12,13,13	0
5	NA	A	1398	1/1	0.99	0.07	-1.54	35,35,35,35	0
8	EDO	A	1402	4/4	0.94	0.09	-	21,22,24,26	4
3	MG	B	1402	1/1	0.98	0.04	-	33,33,33,33	0

6.5 Other polymers [i](#)

There are no such residues in this entry.