



wwPDB X-ray Structure Validation Summary Report ⓘ

Feb 19, 2016 – 06:05 PM GMT

PDB ID : 1BVY
Title : COMPLEX OF THE HEME AND FMN-BINDING DOMAINS OF THE CY-
TOCHROME P450(BM-3)
Authors : Sevrioukova, I.F.; Li, H.; Zhang, H.; Peterson, J.A.; Poulos, T.L.
Deposited on : 1998-09-21
Resolution : 2.03 Å(reported)

This is a wwPDB X-ray Structure Validation Summary Report for a publicly released PDB entry.
We welcome your comments at validation@mail.wwpdb.org
A user guide is available at
<http://wwpdb.org/validation/2016/XrayValidationReportHelp>
with specific help available everywhere you see the ⓘ symbol.

The following versions of software and data (see [references ⓘ](#)) were used in the production of this report:

MolProbity : 4.02b-467
Mogul : 1.7.1 (RC1), CSD as537be (2016)
Xtriage (Phenix) : **NOT EXECUTED**
EDS : **NOT EXECUTED**
Percentile statistics : 20151230.v01 (using entries in the PDB archive December 30th 2015)
Ideal geometry (proteins) : Engh & Huber (2001)
Ideal geometry (DNA, RNA) : Parkinson et al. (1996)
Validation Pipeline (wwPDB-VP) : rb-20026982

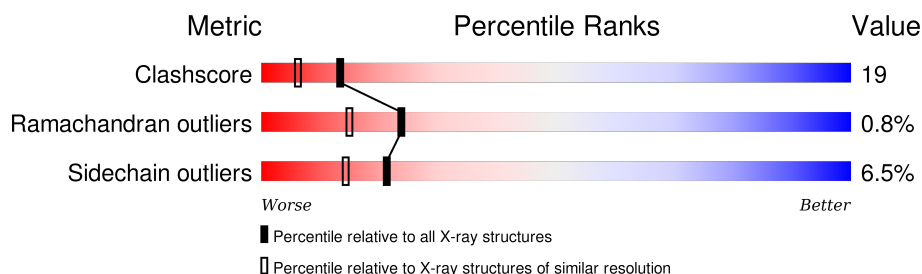
1 Overall quality at a glance

The following experimental techniques were used to determine the structure:

X-RAY DIFFRACTION

The reported resolution of this entry is 2.03 Å.

Percentile scores (ranging between 0-100) for global validation metrics of the entry are shown in the following graphic. The table shows the number of entries on which the scores are based.



Metric	Whole archive (#Entries)	Similar resolution (#Entries, resolution range(Å))
Clashscore	102246	9060 (2.04-2.00)
Ramachandran outliers	100387	8952 (2.04-2.00)
Sidechain outliers	100360	8951 (2.04-2.00)

The table below summarises the geometric issues observed across the polymeric chains and their fit to the electron density. The red, orange, yellow and green segments on the lower bar indicate the fraction of residues that contain outliers for ≥ 3 , 2, 1 and 0 types of geometric quality criteria. A grey segment represents the fraction of residues that are not modelled. The numeric value for each fraction is indicated below the corresponding segment, with a dot representing fractions $\leq 5\%$. The upper red bar (where present) indicates the fraction of residues that have poor fit to the electron density. The numeric value is given above the bar.

Note EDS was not executed.

Mol	Chain	Length	Quality of chain
1	A	458	
1	B	458	
2	F	191	

2 Entry composition [i](#)

There are 6 unique types of molecules in this entry. The entry contains 9324 atoms, of which 0 are hydrogens and 0 are deuteriums.

In the tables below, the ZeroOcc column contains the number of atoms modelled with zero occupancy, the AltConf column contains the number of residues with at least one atom in alternate conformation and the Trace column contains the number of residues modelled with at most 2 atoms.

- Molecule 1 is a protein called PROTEIN (CYTOCHROME P450 BM-3).

Mol	Chain	Residues	Atoms					ZeroOcc	AltConf	Trace
1	A	439	Total	C	N	O	S	0	4	0
			3551	2263	606	665	17			
1	B	438	Total	C	N	O	S	0	0	0
			3527	2249	601	661	16			

- Molecule 2 is a protein called PROTEIN (CYTOCHROME P450 BM-3).

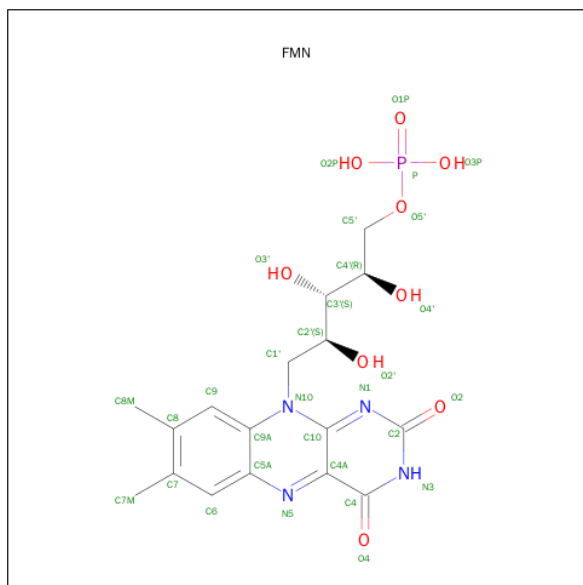
Mol	Chain	Residues	Atoms					ZeroOcc	AltConf	Trace
2	F	152	Total	C	N	O	S	0	0	0
			1162	728	195	235	4			

- Molecule 3 is PROTOPORPHYRIN IX CONTAINING FE (three-letter code: HEM) (formula: $C_{34}H_{32}FeN_4O_4$).



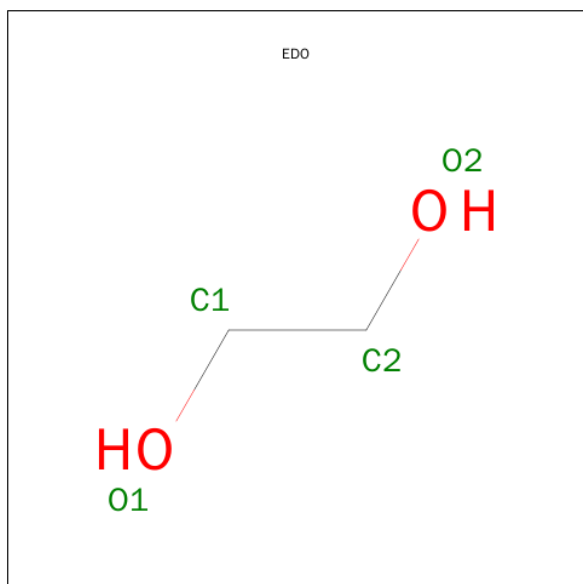
Mol	Chain	Residues	Atoms				ZeroOcc	AltConf
3	A	1	Total	C	Fe	N	O	
			43	34	1	4	4	
3	B	1	Total	C	Fe	N	O	
			43	34	1	4	4	

- Molecule 4 is FLAVIN MONONUCLEOTIDE (three-letter code: FMN) (formula: $C_{17}H_{21}N_4O_9P$).



Mol	Chain	Residues	Atoms				ZeroOcc	AltConf
4	F	1	Total	C	N	O	P	
			31	17	4	9	1	

- Molecule 5 is 1,2-ETHANEDIOL (three-letter code: EDO) (formula: $C_2H_6O_2$).



Mol	Chain	Residues	Atoms	ZeroOcc	AltConf
5	A	1	Total C O 4 2 2	0	0
5	B	1	Total C O 4 2 2	0	0
5	B	1	Total C O 4 2 2	0	0
5	A	1	Total C O 4 2 2	0	0
5	B	1	Total C O 4 2 2	0	0

- Molecule 6 is water.

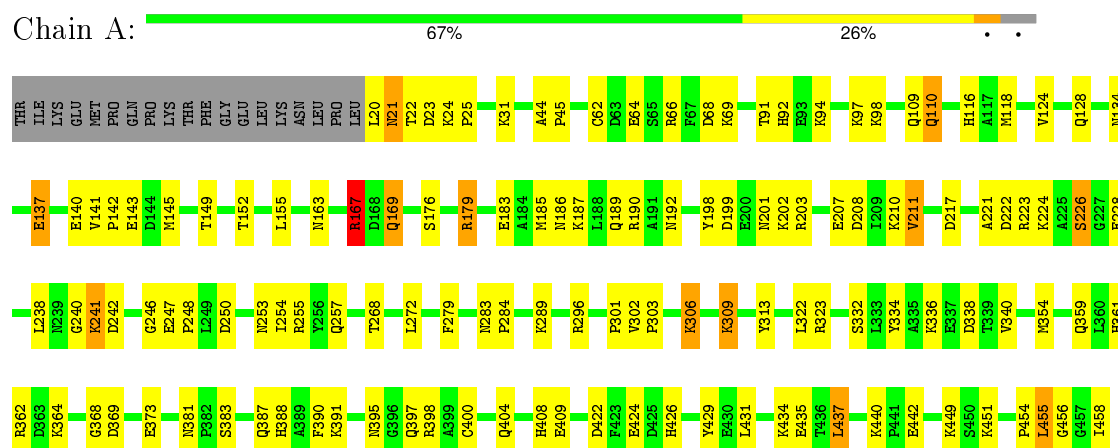
Mol	Chain	Residues	Atoms	ZeroOcc	AltConf
6	A	460	Total O 460 460	0	0
6	B	407	Total O 407 407	0	0
6	F	80	Total O 80 80	0	0

3 Residue-property plots

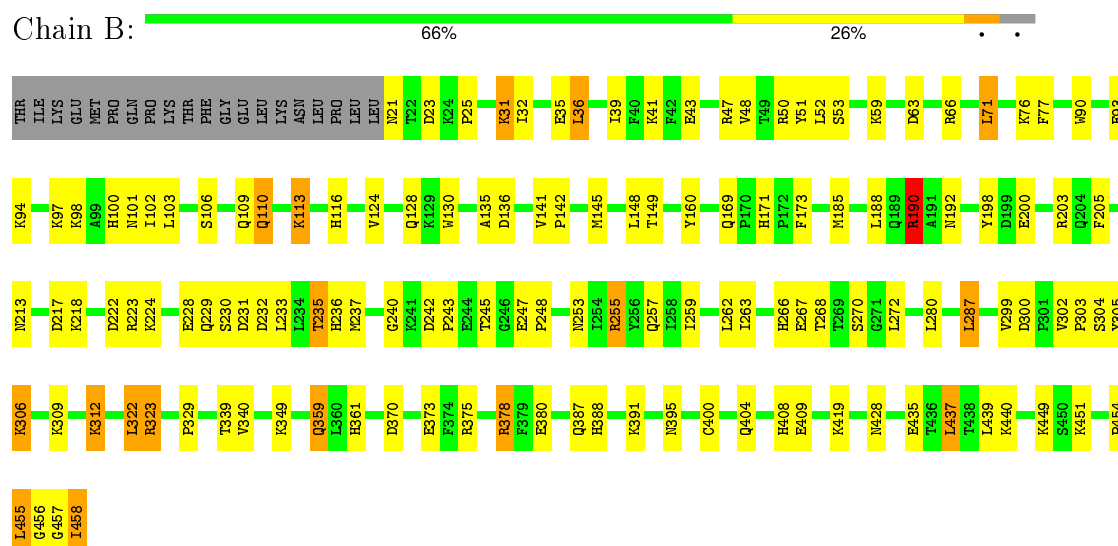
These plots are drawn for all protein, RNA and DNA chains in the entry. The first graphic for a chain summarises the proportions of errors displayed in the second graphic. The second graphic shows the sequence view annotated by issues in geometry and electron density. Residues are color-coded according to the number of geometric quality criteria for which they contain at least one outlier: green = 0, yellow = 1, orange = 2 and red = 3 or more. A red dot above a residue indicates a poor fit to the electron density ($RSRZ > 2$). Stretches of 2 or more consecutive residues without any outlier are shown as a green connector. Residues present in the sample, but not in the model, are shown in grey.

Note EDS was not executed.

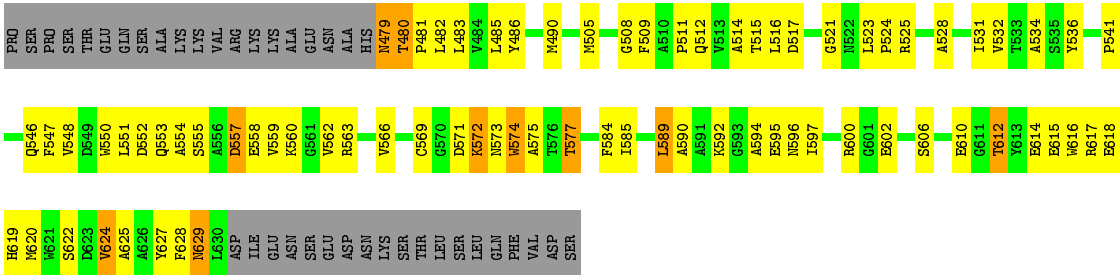
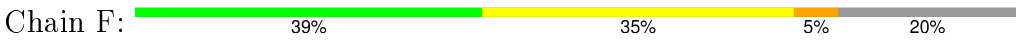
- Molecule 1: PROTEIN (CYTOCHROME P450 BM-3)



- Molecule 1: PROTEIN (CYTOCHROME P450 BM-3)



- Molecule 2: PROTEIN (CYTOCHROME P450 BM-3)



4 Data and refinement statistics

Xtriage (Phenix) and EDS were not executed - this section will therefore be incomplete.

Property	Value	Source
Space group	P 21 21 21	Depositor
Cell constants a, b, c, α , β , γ	58.84Å 94.68Å 209.06Å 90.00° 90.00° 90.00°	Depositor
Resolution (Å)	10.00 – 2.03	Depositor
% Data completeness (in resolution range)	83.0 (10.00-2.03)	Depositor
R_{merge}	(Not available)	Depositor
R_{sym}	0.05	Depositor
Refinement program	SHELXL-97	Depositor
R, R_{free}	0.187 , 0.275	Depositor
Estimated twinning fraction	No twinning to report.	Xtriage
Total number of atoms	9324	wwPDB-VP
Average B, all atoms (Å ²)	32.0	wwPDB-VP

5 Model quality

5.1 Standard geometry

Bond lengths and bond angles in the following residue types are not validated in this section: FMN, HEM, EDO

The Z score for a bond length (or angle) is the number of standard deviations the observed value is removed from the expected value. A bond length (or angle) with $|Z| > 5$ is considered an outlier worth inspection. RMSZ is the root-mean-square of all Z scores of the bond lengths (or angles).

Mol	Chain	Bond lengths		Bond angles	
		RMSZ	$\# Z > 5$	RMSZ	$\# Z > 5$
1	A	0.33	0/3652	0.90	6/4934 (0.1%)
1	B	0.35	1/3608 (0.0%)	0.93	10/4876 (0.2%)
2	F	0.40	0/1190	0.87	1/1621 (0.1%)
All	All	0.35	1/8450 (0.0%)	0.91	17/11431 (0.1%)

All (1) bond length outliers are listed below:

Mol	Chain	Res	Type	Atoms	Z	Observed(Å)	Ideal(Å)
1	B	47	ARG	CG-CD	5.23	1.65	1.51

The worst 5 of 17 bond angle outliers are listed below:

Mol	Chain	Res	Type	Atoms	Z	Observed(°)	Ideal(°)
1	B	323	ARG	NE-CZ-NH2	-11.31	114.65	120.30
1	B	323	ARG	CD-NE-CZ	9.13	136.38	123.60
1	B	323	ARG	NE-CZ-NH1	8.91	124.76	120.30
1	A	179	ARG	CD-NE-CZ	8.79	135.91	123.60
1	A	167	ARG	NE-CZ-NH1	7.96	124.28	120.30

There are no chirality outliers.

There are no planarity outliers.

5.2 Too-close contacts

In the following table, the Non-H and H(model) columns list the number of non-hydrogen atoms and hydrogen atoms in the chain respectively. The H(added) column lists the number of hydrogen atoms added and optimized by MolProbity. The Clashes column lists the number of clashes within the asymmetric unit, whereas Symm-Clashes lists symmetry related clashes.

Mol	Chain	Non-H	H(model)	H(added)	Clashes	Symm-Clashes
1	A	3551	0	3512	115	0
1	B	3527	0	3483	133	0
2	F	1162	0	1077	70	0
3	A	43	0	30	4	0
3	B	43	0	30	3	0
4	F	31	0	19	1	0
5	A	8	0	11	1	0
5	B	12	0	17	1	0
6	A	460	0	0	28	1
6	B	407	0	0	28	1
6	F	80	0	0	6	0
All	All	9324	0	8179	311	1

The all-atom clashscore is defined as the number of clashes found per 1000 atoms (including hydrogen atoms). The all-atom clashscore for this structure is 19.

The worst 5 of 311 close contacts within the same asymmetric unit are listed below, sorted by their clash magnitude.

Atom-1	Atom-2	Interatomic distance (Å)	Clash overlap (Å)
1:B:280:LEU:HB3	1:B:287:LEU:HD23	1.55	0.89
2:F:590:ALA:HA	2:F:594:ALA:HB2	1.53	0.88
1:B:272:LEU:HD13	1:B:322:LEU:HD13	1.53	0.88
1:B:66:ARG:HE	1:B:339:THR:HG21	1.41	0.86
1:A:387:GLN:HG3	6:A:1465:HOH:O	1.74	0.86

All (1) symmetry-related close contacts are listed below. The label for Atom-2 includes the symmetry operator and encoded unit-cell translations to be applied.

Atom-1	Atom-2	Interatomic distance (Å)	Clash overlap (Å)
6:A:1356:HOH:O	6:B:1206:HOH:O[4_566]	2.19	0.01

5.3 Torsion angles [i](#)

5.3.1 Protein backbone [i](#)

In the following table, the Percentiles column shows the percent Ramachandran outliers of the chain as a percentile score with respect to all X-ray entries followed by that with respect to entries of similar resolution.

The Analysed column shows the number of residues for which the backbone conformation was analysed, and the total number of residues.

Mol	Chain	Analysed	Favoured	Allowed	Outliers	Percentiles	
1	A	441/458 (96%)	427 (97%)	13 (3%)	1 (0%)	52	47
1	B	436/458 (95%)	416 (95%)	18 (4%)	2 (0%)	34	26
2	F	150/191 (78%)	123 (82%)	22 (15%)	5 (3%)	5	1
All	All	1027/1107 (93%)	966 (94%)	53 (5%)	8 (1%)	24	15

5 of 8 Ramachandran outliers are listed below:

Mol	Chain	Res	Type
2	F	558	GLU
2	F	575	ALA
1	B	228	GLU
1	B	229	GLN
2	F	596	ASN

5.3.2 Protein sidechains ⓘ

In the following table, the Percentiles column shows the percent sidechain outliers of the chain as a percentile score with respect to all X-ray entries followed by that with respect to entries of similar resolution.

The Analysed column shows the number of residues for which the sidechain conformation was analysed, and the total number of residues.

Mol	Chain	Analysed	Rotameric	Outliers	Percentiles	
1	A	386/400 (96%)	365 (95%)	21 (5%)	27	21
1	B	381/400 (95%)	359 (94%)	22 (6%)	25	18
2	F	117/153 (76%)	103 (88%)	14 (12%)	6	3
All	All	884/953 (93%)	827 (94%)	57 (6%)	21	15

5 of 57 residues with a non-rotameric sidechain are listed below:

Mol	Chain	Res	Type
2	F	557	ASP
2	F	612	THR
1	B	322	LEU
2	F	560	LYS
2	F	577	THR

Some sidechains can be flipped to improve hydrogen bonding and reduce clashes. 5 of 30 such sidechains are listed below:

Mol	Chain	Res	Type
1	A	426	HIS
2	F	546	GLN
1	B	395	ASN
2	F	519	HIS
2	F	573	ASN

5.3.3 RNA [i](#)

There are no RNA molecules in this entry.

5.4 Non-standard residues in protein, DNA, RNA chains [i](#)

There are no non-standard protein/DNA/RNA residues in this entry.

5.5 Carbohydrates [i](#)

There are no carbohydrates in this entry.

5.6 Ligand geometry [i](#)

8 ligands are modelled in this entry.

In the following table, the Counts columns list the number of bonds (or angles) for which Mogul statistics could be retrieved, the number of bonds (or angles) that are observed in the model and the number of bonds (or angles) that are defined in the chemical component dictionary. The Link column lists molecule types, if any, to which the group is linked. The Z score for a bond length (or angle) is the number of standard deviations the observed value is removed from the expected value. A bond length (or angle) with $|Z| > 2$ is considered an outlier worth inspection. RMSZ is the root-mean-square of all Z scores of the bond lengths (or angles).

Mol	Type	Chain	Res	Link	Bond lengths			Bond angles		
					Counts	RMSZ	$\# Z > 2$	Counts	RMSZ	$\# Z > 2$
3	HEM	A	1000	1,5	24,50,50	1.85	5 (20%)	16,82,82	1.85	5 (31%)
5	EDO	A	1003	3	3,3,3	0.49	0	2,2,2	0.41	0
5	EDO	A	1006	-	3,3,3	0.49	0	2,2,2	0.52	0
3	HEM	B	1001	1,5	24,50,50	1.76	5 (20%)	16,82,82	2.33	5 (31%)
5	EDO	B	1004	3	3,3,3	0.55	0	2,2,2	0.54	0
5	EDO	B	1005	-	3,3,3	0.57	0	2,2,2	0.49	0
5	EDO	B	1007	-	3,3,3	0.48	0	2,2,2	0.35	0
4	FMN	F	1002	-	32,33,33	1.55	4 (12%)	34,50,50	2.35	14 (41%)

In the following table, the Chirals column lists the number of chiral outliers, the number of chiral centers analysed, the number of these observed in the model and the number defined in the chemical component dictionary. Similar counts are reported in the Torsion and Rings columns. '-' means no outliers of that kind were identified.

Mol	Type	Chain	Res	Link	Chirals	Torsions	Rings
3	HEM	A	1000	1,5	-	0/6/54/54	0/0/8/8
5	EDO	A	1003	3	-	0/1/1/1	0/0/0/0
5	EDO	A	1006	-	-	0/1/1/1	0/0/0/0
3	HEM	B	1001	1,5	-	0/6/54/54	0/0/8/8
5	EDO	B	1004	3	-	0/1/1/1	0/0/0/0
5	EDO	B	1005	-	-	0/1/1/1	0/0/0/0
5	EDO	B	1007	-	-	0/1/1/1	0/0/0/0
4	FMN	F	1002	-	-	0/18/18/18	0/3/3/3

The worst 5 of 14 bond length outliers are listed below:

Mol	Chain	Res	Type	Atoms	Z	Observed(Å)	Ideal(Å)
4	F	1002	FMN	P-O5'	-4.68	1.46	1.59
3	B	1001	HEM	C3C-CAC	-4.20	1.38	1.47
3	A	1000	HEM	C3B-CAB	-4.04	1.39	1.47
3	A	1000	HEM	C3C-CAC	-3.99	1.39	1.47
3	B	1001	HEM	C3B-CAB	-3.92	1.39	1.47

The worst 5 of 24 bond angle outliers are listed below:

Mol	Chain	Res	Type	Atoms	Z	Observed(°)	Ideal(°)
4	F	1002	FMN	O4'-C4'-C3'	-4.98	96.15	108.96
4	F	1002	FMN	C4-C4A-C10	-4.68	116.95	119.94
3	B	1001	HEM	CMA-C3A-C4A	-3.02	123.17	128.31
3	A	1000	HEM	CMA-C3A-C4A	-2.98	123.24	128.31
4	F	1002	FMN	C4A-C10-N10	-2.94	118.39	120.52

There are no chirality outliers.

There are no torsion outliers.

There are no ring outliers.

5 monomers are involved in 10 short contacts:

Mol	Chain	Res	Type	Clashes	Symm-Clashes
3	A	1000	HEM	4	0
5	A	1006	EDO	1	0
3	B	1001	HEM	3	0
5	B	1007	EDO	1	0

Continued on next page...

Continued from previous page...

Mol	Chain	Res	Type	Clashes	Symm-Clashes
4	F	1002	FMN	1	0

5.7 Other polymers [i](#)

There are no such residues in this entry.

5.8 Polymer linkage issues [i](#)

There are no chain breaks in this entry.

6 Fit of model and data ⓘ

6.1 Protein, DNA and RNA chains ⓘ

EDS was not executed - this section will therefore be empty.

6.2 Non-standard residues in protein, DNA, RNA chains ⓘ

EDS was not executed - this section will therefore be empty.

6.3 Carbohydrates ⓘ

EDS was not executed - this section will therefore be empty.

6.4 Ligands ⓘ

EDS was not executed - this section will therefore be empty.

6.5 Other polymers ⓘ

EDS was not executed - this section will therefore be empty.