



Full wwPDB X-ray Structure Validation Report ⓘ

Feb 1, 2016 – 12:50 AM GMT

PDB ID : 2BVC
Title : CRYSTAL STRUCTURE OF MYCOBACTERIUM TUBERCULOSIS GLUTAMINE SYNTHETASE IN COMPLEX WITH A TRANSITION STATE MIMIC
Authors : Krajewski, W.W.; Jones, T.A.; Mowbray, S.L.
Deposited on : 2005-06-23
Resolution : 2.10 Å(reported)

This is a Full wwPDB X-ray Structure Validation Report for a publicly released PDB entry.
We welcome your comments at validation@mail.wwpdb.org
A user guide is available at
<http://wwpdb.org/validation/2016/XrayValidationReportHelp>
with specific help available everywhere you see the ⓘ symbol.

The following versions of software and data (see [references ⓘ](#)) were used in the production of this report:

MolProbity : 4.02b-467
Mogul : 1.7 (RC4), CSD as536be (2015)
Xtriage (Phenix) : 1.9-1692
EDS : rb-20026688
Percentile statistics : 20151230.v01 (using entries in the PDB archive December 30th 2015)
Refmac : 5.8.0135
CCP4 : 6.5.0
Ideal geometry (proteins) : Engh & Huber (2001)
Ideal geometry (DNA, RNA) : Parkinson et al. (1996)
Validation Pipeline (wwPDB-VP) : trunk26865

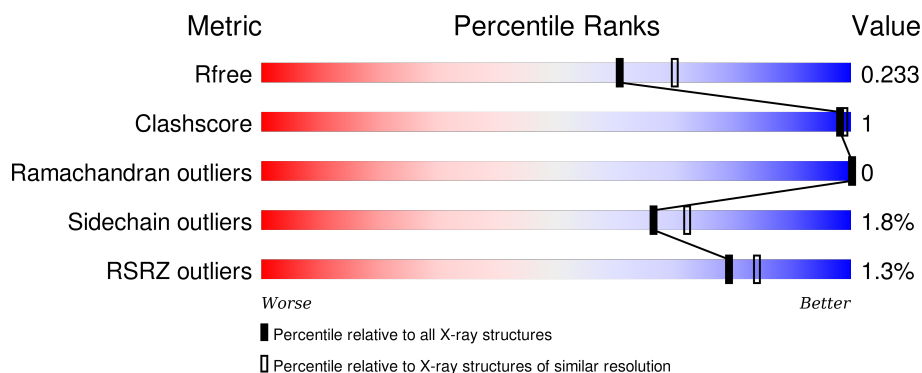
1 Overall quality at a glance

The following experimental techniques were used to determine the structure:

X-RAY DIFFRACTION

The reported resolution of this entry is 2.10 Å.

Percentile scores (ranging between 0-100) for global validation metrics of the entry are shown in the following graphic. The table shows the number of entries on which the scores are based.



Metric	Whole archive (#Entries)	Similar resolution (#Entries, resolution range(Å))
R_{free}	91344	3939 (2.10-2.10)
Clashscore	102246	4460 (2.10-2.10)
Ramachandran outliers	100387	4413 (2.10-2.10)
Sidechain outliers	100360	4414 (2.10-2.10)
RSRZ outliers	91569	3948 (2.10-2.10)

The table below summarises the geometric issues observed across the polymeric chains and their fit to the electron density. The red, orange, yellow and green segments on the lower bar indicate the fraction of residues that contain outliers for ≥ 3 , 2, 1 and 0 types of geometric quality criteria. A grey segment represents the fraction of residues that are not modelled. The numeric value for each fraction is indicated below the corresponding segment, with a dot representing fractions $\leq 5\%$. The upper red bar (where present) indicates the fraction of residues that have poor fit to the electron density. The numeric value is given above the bar.

Mol	Chain	Length	Quality of chain
1	A	486	<div> <div>%</div> <div> <div></div> <div>94%</div> <div></div> </div> <div> <div></div> <div></div> <div></div> </div> </div>
1	B	486	<div> <div>2%</div> <div> <div></div> <div>93%</div> <div></div> </div> <div> <div></div> <div></div> <div></div> </div> </div>
1	C	486	<div> <div>2%</div> <div> <div></div> <div>94%</div> <div></div> </div> <div> <div></div> <div></div> <div></div> </div> </div>
1	D	486	<div> <div>%</div> <div> <div></div> <div>94%</div> <div></div> </div> <div> <div></div> <div></div> <div></div> </div> </div>
1	E	486	<div> <div></div> <div> <div></div> <div>91%</div> <div>6%</div> </div> <div> <div></div> <div></div> <div></div> </div> </div>

Continued on next page...

Continued from previous page...

Mol	Chain	Length	Quality of chain
1	F	486	<div><div>%</div><div><div></div><div>95%</div><div></div></div><div><div></div><div></div><div></div></div></div>

2 Entry composition [i](#)

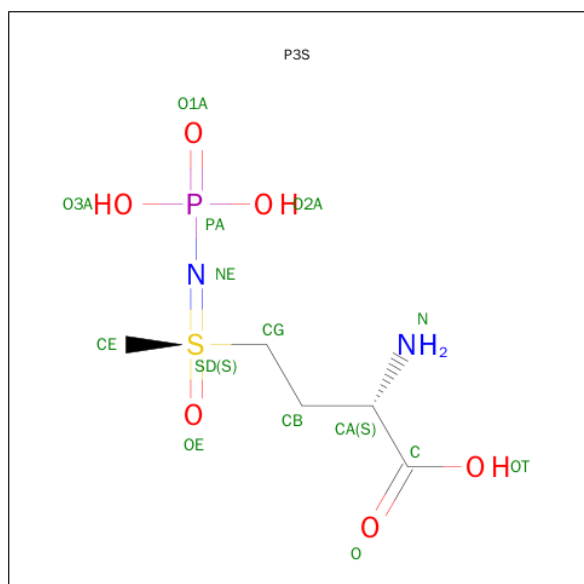
There are 6 unique types of molecules in this entry. The entry contains 23469 atoms, of which 0 are hydrogens and 0 are deuteriums.

In the tables below, the ZeroOcc column contains the number of atoms modelled with zero occupancy, the AltConf column contains the number of residues with at least one atom in alternate conformation and the Trace column contains the number of residues modelled with at most 2 atoms.

- Molecule 1 is a protein called GLUTAMINE SYNTHETASE 1.

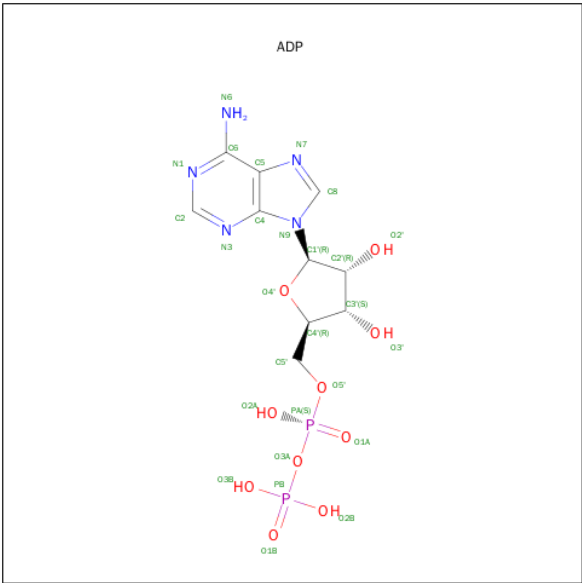
Mol	Chain	Residues	Atoms					ZeroOcc	AltConf	Trace
1	A	475	Total	C	N	O	S	0	0	0
			3762	2397	631	722	12			
1	B	475	Total	C	N	O	S	0	0	0
			3762	2397	631	722	12			
1	C	475	Total	C	N	O	S	0	0	0
			3762	2397	631	722	12			
1	D	475	Total	C	N	O	S	0	0	0
			3762	2397	631	722	12			
1	E	475	Total	C	N	O	S	0	0	0
			3762	2397	631	722	12			
1	F	475	Total	C	N	O	S	0	0	0
			3762	2397	631	722	12			

- Molecule 2 is L-METHIONINE-S-SULFOXIMINE PHOSPHATE (three-letter code: P3S) (formula: C₅H₁₃N₂O₆PS).



Mol	Chain	Residues	Atoms						ZeroOcc	AltConf
2	A	1	Total	C	N	O	P	S	0	0
			15	5	2	6	1	1		
2	B	1	Total	C	N	O	P	S	0	0
			15	5	2	6	1	1		
2	C	1	Total	C	N	O	P	S	0	0
			15	5	2	6	1	1		
2	D	1	Total	C	N	O	P	S	0	0
			15	5	2	6	1	1		
2	E	1	Total	C	N	O	P	S	0	0
			15	5	2	6	1	1		
2	F	1	Total	C	N	O	P	S	0	0
			15	5	2	6	1	1		

- Molecule 3 is ADENOSINE-5'-DIPHOSPHATE (three-letter code: ADP) (formula: C₁₀H₁₅N₅O₁₀P₂).



Mol	Chain	Residues	Atoms					ZeroOcc	AltConf
3	A	1	Total	C	N	O	P	0	0
			27	10	5	10	2		
3	B	1	Total	C	N	O	P	0	0
			27	10	5	10	2		
3	C	1	Total	C	N	O	P	0	0
			27	10	5	10	2		
3	D	1	Total	C	N	O	P	0	0
			27	10	5	10	2		
3	E	1	Total	C	N	O	P	0	0
			27	10	5	10	2		

Continued on next page...

Continued from previous page...

Mol	Chain	Residues	Atoms					ZeroOcc	AltConf
3	F	1	Total	C	N	O	P	0	0
			27	10	5	10	2		

- Molecule 4 is MAGNESIUM ION (three-letter code: MG) (formula: Mg).

Mol	Chain	Residues	Atoms		ZeroOcc	AltConf
4	D	3	Total	Mg	0	0
			3	3		
4	E	3	Total	Mg	0	0
			3	3		
4	B	3	Total	Mg	0	0
			3	3		
4	C	3	Total	Mg	0	0
			3	3		
4	A	3	Total	Mg	0	0
			3	3		
4	F	3	Total	Mg	0	0
			3	3		

- Molecule 5 is CHLORIDE ION (three-letter code: CL) (formula: Cl).

Mol	Chain	Residues	Atoms		ZeroOcc	AltConf
5	D	1	Total	Cl	0	0
			1	1		
5	E	1	Total	Cl	0	0
			1	1		
5	B	1	Total	Cl	0	0
			1	1		
5	C	1	Total	Cl	0	0
			1	1		
5	A	1	Total	Cl	0	0
			1	1		
5	F	1	Total	Cl	0	0
			1	1		

- Molecule 6 is water.

Mol	Chain	Residues	Atoms		ZeroOcc	AltConf
6	A	119	Total	O	0	0
			119	119		
6	B	92	Total	O	0	0
			92	92		

Continued on next page...

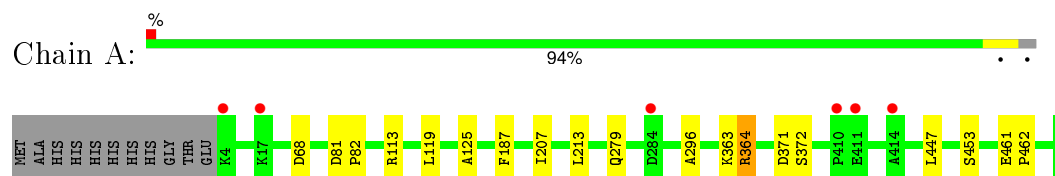
Continued from previous page...

Mol	Chain	Residues	Atoms		ZeroOcc	AltConf
6	C	87	Total 87	O 87	0	0
6	D	96	Total 96	O 96	0	0
6	E	121	Total 121	O 121	0	0
6	F	106	Total 106	O 106	0	0

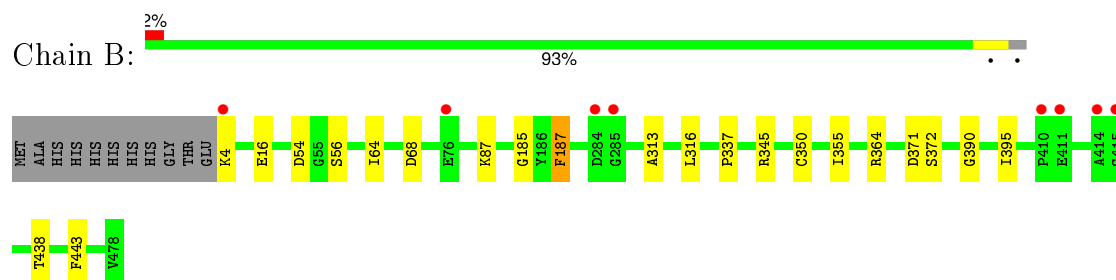
3 Residue-property plots [i](#)

These plots are drawn for all protein, RNA and DNA chains in the entry. The first graphic for a chain summarises the proportions of errors displayed in the second graphic. The second graphic shows the sequence view annotated by issues in geometry and electron density. Residues are color-coded according to the number of geometric quality criteria for which they contain at least one outlier: green = 0, yellow = 1, orange = 2 and red = 3 or more. A red dot above a residue indicates a poor fit to the electron density ($RSRZ > 2$). Stretches of 2 or more consecutive residues without any outlier are shown as a green connector. Residues present in the sample, but not in the model, are shown in grey.

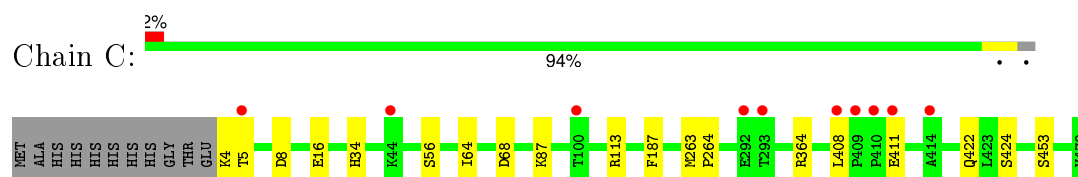
• Molecule 1: GLUTAMINE SYNTHETASE 1



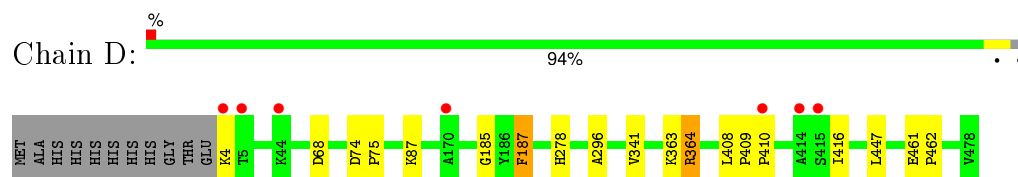
• Molecule 1: GLUTAMINE SYNTHETASE 1



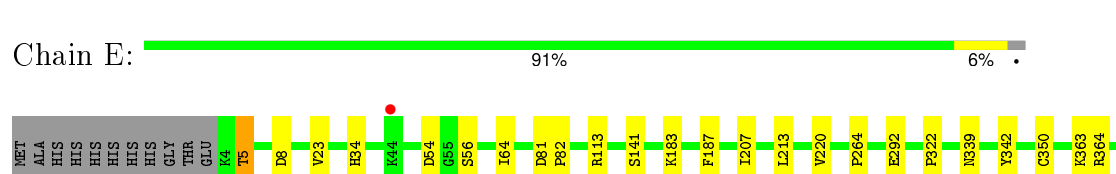
• Molecule 1: GLUTAMINE SYNTHETASE 1



• Molecule 1: GLUTAMINE SYNTHETASE 1



• Molecule 1: GLUTAMINE SYNTHETASE 1





● Molecule 1: GLUTAMINE SYNTHETASE 1



4 Data and refinement statistics

Property	Value	Source
Space group	C 2 2 21	Depositor
Cell constants a, b, c, α , β , γ	133.26Å 229.46Å 203.17Å 90.00° 90.00° 90.00°	Depositor
Resolution (Å)	20.00 – 2.10 20.03 – 2.10	Depositor EDS
% Data completeness (in resolution range)	89.2 (20.00-2.10) 89.2 (20.03-2.10)	Depositor EDS
R_{merge}	0.06	Depositor
R_{sym}	(Not available)	Depositor
$\langle I/\sigma(I) \rangle$ ¹	1.88 (at 2.11Å)	Xtriage
Refinement program	REFMAC 5.2.0005	Depositor
R, R_{free}	0.191 , 0.230 0.196 , 0.233	Depositor DCC
R_{free} test set	8011 reflections (5.26%)	DCC
Wilson B-factor (Å ²)	27.5	Xtriage
Anisotropy	0.206	Xtriage
Bulk solvent k_{sol} (e/Å ³), B_{sol} (Å ²)	0.36 , 41.6	EDS
Estimated twinning fraction	0.007 for 1/2*h-1/2*k,-3/2*h-1/2*k,-l 0.011 for 1/2*h+1/2*k,3/2*h-1/2*k,-l	Xtriage
L-test for twinning ²	$\langle L \rangle = 0.50$, $\langle L^2 \rangle = 0.34$	Xtriage
Outliers	1 of 160270 reflections (0.001%)	Xtriage
F_o, F_c correlation	0.95	EDS
Total number of atoms	23469	wwPDB-VP
Average B, all atoms (Å ²)	25.0	wwPDB-VP

Xtriage's analysis on translational NCS is as follows: *The largest off-origin peak in the Patterson function is 2.68% of the height of the origin peak. No significant pseudotranslation is detected.*

¹Intensities estimated from amplitudes.

²Theoretical values of $\langle |L| \rangle$, $\langle L^2 \rangle$ for acentric reflections are 0.5, 0.375 respectively for untwinned datasets, and 0.333, 0.2 for perfectly twinned datasets.

5 Model quality [i](#)

5.1 Standard geometry [i](#)

Bond lengths and bond angles in the following residue types are not validated in this section: P3S, MG, ADP, CL

The Z score for a bond length (or angle) is the number of standard deviations the observed value is removed from the expected value. A bond length (or angle) with $|Z| > 5$ is considered an outlier worth inspection. RMSZ is the root-mean-square of all Z scores of the bond lengths (or angles).

Mol	Chain	Bond lengths		Bond angles	
		RMSZ	# Z >5	RMSZ	# Z >5
1	A	0.45	0/3868	0.54	0/5257
1	B	0.43	0/3868	0.55	0/5257
1	C	0.43	0/3868	0.55	0/5257
1	D	0.44	0/3868	0.55	0/5257
1	E	0.46	0/3868	0.56	0/5257
1	F	0.45	0/3868	0.55	0/5257
All	All	0.44	0/23208	0.55	0/31542

There are no bond length outliers.

There are no bond angle outliers.

There are no chirality outliers.

There are no planarity outliers.

5.2 Too-close contacts [i](#)

In the following table, the Non-H and H(model) columns list the number of non-hydrogen atoms and hydrogen atoms in the chain respectively. The H(added) column lists the number of hydrogen atoms added and optimized by MolProbity. The Clashes column lists the number of clashes within the asymmetric unit, whereas Symm-Clashes lists symmetry related clashes.

Mol	Chain	Non-H	H(model)	H(added)	Clashes	Symm-Clashes
1	A	3762	0	3591	8	0
1	B	3762	0	3591	10	0
1	C	3762	0	3591	5	0
1	D	3762	0	3591	7	0
1	E	3762	0	3591	14	0
1	F	3762	0	3591	3	0
2	A	15	0	10	0	0

Continued on next page...

Continued from previous page...

Mol	Chain	Non-H	H(model)	H(added)	Clashes	Symm-Clashes
2	B	15	0	10	0	0
2	C	15	0	10	0	0
2	D	15	0	10	0	0
2	E	15	0	10	0	0
2	F	15	0	10	0	0
3	A	27	0	12	0	0
3	B	27	0	12	0	0
3	C	27	0	12	0	0
3	D	27	0	12	0	0
3	E	27	0	12	0	0
3	F	27	0	12	0	0
4	A	3	0	0	0	0
4	B	3	0	0	0	0
4	C	3	0	0	0	0
4	D	3	0	0	0	0
4	E	3	0	0	0	0
4	F	3	0	0	0	0
5	A	1	0	0	0	0
5	B	1	0	0	0	0
5	C	1	0	0	0	0
5	D	1	0	0	0	0
5	E	1	0	0	0	0
5	F	1	0	0	0	0
6	A	119	0	0	2	0
6	B	92	0	0	1	0
6	C	87	0	0	0	0
6	D	96	0	0	0	0
6	E	121	0	0	1	0
6	F	106	0	0	0	0
All	All	23469	0	21678	46	0

The all-atom clashscore is defined as the number of clashes found per 1000 atoms (including hydrogen atoms). The all-atom clashscore for this structure is 1.

All (46) close contacts within the same asymmetric unit are listed below, sorted by their clash magnitude.

Atom-1	Atom-2	Interatomic distance (Å)	Clash overlap (Å)
1:E:372:SER:HB3	6:E:2103:HOH:O	1.64	0.97
1:B:56:SER:OG	1:B:64:ILE:HA	1.92	0.69
1:E:56:SER:OG	1:E:64:ILE:HA	1.94	0.68
1:A:207:ILE:HG13	1:A:213:LEU:HD23	1.82	0.62

Continued on next page...

Continued from previous page...

Atom-1	Atom-2	Interatomic distance (Å)	Clash overlap (Å)
1:B:54:ASP:OD1	1:B:56:SER:HB2	2.02	0.60
1:F:56:SER:OG	1:F:64:ILE:HA	2.04	0.57
1:E:5:THR:HG23	1:E:8:ASP:H	1.70	0.57
1:E:207:ILE:HG13	1:E:213:LEU:HD23	1.87	0.56
1:A:372:SER:HA	6:A:2096:HOH:O	2.09	0.51
1:E:54:ASP:OD1	1:E:56:SER:HB2	2.11	0.50
1:A:461:GLU:HB3	1:A:462:PRO:HD3	1.94	0.50
1:A:119:LEU:HD11	1:A:125:ALA:HB3	1.92	0.50
1:C:5:THR:HG22	1:C:8:ASP:OD1	2.14	0.47
1:B:390:GLY:HA2	1:B:395:ILE:HD12	1.97	0.47
1:D:461:GLU:HB3	1:D:462:PRO:HD3	1.97	0.47
1:B:337:PRO:HB3	1:B:350:CYS:HA	1.96	0.46
1:C:56:SER:OG	1:C:64:ILE:HA	2.16	0.46
1:E:207:ILE:CG1	1:E:213:LEU:HD23	2.46	0.45
1:B:185:GLY:O	1:B:187:PHE:HA	2.17	0.45
1:B:371:ASP:HB2	6:B:2068:HOH:O	2.17	0.45
1:C:16:GLU:O	1:C:87:LYS:HE2	2.18	0.44
1:A:296:ALA:O	1:A:363:LYS:HE2	2.16	0.44
1:D:185:GLY:O	1:D:187:PHE:HA	2.17	0.44
1:E:81:ASP:HA	1:E:82:PRO:HD3	1.85	0.43
1:E:264:PRO:HD3	1:E:373:SER:HB3	2.00	0.43
1:B:438:THR:HG22	1:B:443:PHE:O	2.18	0.43
1:B:345:ARG:HB2	1:B:355:ILE:HD11	2.01	0.42
1:D:341:VAL:CG2	1:D:416:ILE:HG21	2.49	0.42
1:D:296:ALA:O	1:D:363:LYS:HE2	2.19	0.42
1:E:390:GLY:HA2	1:E:395:ILE:HD12	2.02	0.42
1:E:183:LYS:HA	1:E:220:VAL:HG12	2.01	0.42
1:B:16:GLU:O	1:B:87:LYS:HE2	2.20	0.41
1:E:339:ASN:O	1:E:350:CYS:HB2	2.19	0.41
1:A:81:ASP:HA	1:A:82:PRO:HD3	1.91	0.41
1:E:322:PRO:HG3	1:E:374:GLY:HA3	2.02	0.41
1:D:409:PRO:HA	1:D:410:PRO:HD3	1.94	0.41
1:C:263:MET:HA	1:C:264:PRO:HD3	1.92	0.41
1:A:279:GLN:O	1:A:364:ARG:HB2	2.20	0.41
1:A:371:ASP:HB2	6:A:2079:HOH:O	2.20	0.40
1:B:313:ALA:HA	1:B:316:LEU:HB3	2.03	0.40
1:D:74:ASP:HA	1:D:75:PRO:HD2	1.83	0.40
1:F:359:ASN:HA	1:F:360:PRO:HD3	1.91	0.40
1:D:278:HIS:HB3	1:D:364:ARG:HG3	2.04	0.40
1:E:23:VAL:O	1:E:34:HIS:HA	2.22	0.40
1:C:422:GLN:HE21	1:C:424:SER:HG	1.67	0.40

Continued on next page...

Continued from previous page...

Atom-1	Atom-2	Interatomic distance (Å)	Clash overlap (Å)
1:E:141:SER:HB3	1:F:174:PRO:HB3	2.04	0.40

There are no symmetry-related clashes.

5.3 Torsion angles [i](#)

5.3.1 Protein backbone [i](#)

In the following table, the Percentiles column shows the percent Ramachandran outliers of the chain as a percentile score with respect to all X-ray entries followed by that with respect to entries of similar resolution.

The Analysed column shows the number of residues for which the backbone conformation was analysed, and the total number of residues.

Mol	Chain	Analysed	Favoured	Allowed	Outliers	Percentiles	
1	A	473/486 (97%)	460 (97%)	13 (3%)	0	100	100
1	B	473/486 (97%)	463 (98%)	10 (2%)	0	100	100
1	C	473/486 (97%)	466 (98%)	7 (2%)	0	100	100
1	D	473/486 (97%)	463 (98%)	10 (2%)	0	100	100
1	E	473/486 (97%)	466 (98%)	7 (2%)	0	100	100
1	F	473/486 (97%)	461 (98%)	12 (2%)	0	100	100
All	All	2838/2916 (97%)	2779 (98%)	59 (2%)	0	100	100

There are no Ramachandran outliers to report.

5.3.2 Protein sidechains [i](#)

In the following table, the Percentiles column shows the percent sidechain outliers of the chain as a percentile score with respect to all X-ray entries followed by that with respect to entries of similar resolution.

The Analysed column shows the number of residues for which the sidechain conformation was analysed, and the total number of residues.

Mol	Chain	Analysed	Rotameric	Outliers	Percentiles	
1	A	402/411 (98%)	396 (98%)	6 (2%)	72	78
1	B	402/411 (98%)	397 (99%)	5 (1%)	78	84

Continued on next page...

Continued from previous page...

Mol	Chain	Analysed	Rotameric	Outliers	Percentiles	
1	C	402/411 (98%)	393 (98%)	9 (2%)	60	64
1	D	402/411 (98%)	395 (98%)	7 (2%)	68	74
1	E	402/411 (98%)	392 (98%)	10 (2%)	55	59
1	F	402/411 (98%)	395 (98%)	7 (2%)	68	74
All	All	2412/2466 (98%)	2368 (98%)	44 (2%)	66	72

All (44) residues with a non-rotameric sidechain are listed below:

Mol	Chain	Res	Type
1	A	68	ASP
1	A	113	ARG
1	A	187	PHE
1	A	364	ARG
1	A	447	LEU
1	A	453	SER
1	B	4	LYS
1	B	68	ASP
1	B	187	PHE
1	B	364	ARG
1	B	372	SER
1	C	4	LYS
1	C	34	HIS
1	C	68	ASP
1	C	113	ARG
1	C	187	PHE
1	C	364	ARG
1	C	408	LEU
1	C	411	GLU
1	C	453	SER
1	D	4	LYS
1	D	68	ASP
1	D	87	LYS
1	D	187	PHE
1	D	364	ARG
1	D	408	LEU
1	D	447	LEU
1	E	5	THR
1	E	113	ARG
1	E	187	PHE
1	E	292	GLU
1	E	342	TYR

Continued on next page...

Continued from previous page...

Mol	Chain	Res	Type
1	E	363	LYS
1	E	364	ARG
1	E	372	SER
1	E	411	GLU
1	E	416	ILE
1	F	34	HIS
1	F	68	ASP
1	F	113	ARG
1	F	187	PHE
1	F	363	LYS
1	F	364	ARG
1	F	411	GLU

Some sidechains can be flipped to improve hydrogen bonding and reduce clashes. All (4) such sidechains are listed below:

Mol	Chain	Res	Type
1	B	398	GLN
1	C	398	GLN
1	D	398	GLN
1	F	398	GLN

5.3.3 RNA [i](#)

There are no RNA molecules in this entry.

5.4 Non-standard residues in protein, DNA, RNA chains [i](#)

There are no non-standard protein/DNA/RNA residues in this entry.

5.5 Carbohydrates [i](#)

There are no carbohydrates in this entry.

5.6 Ligand geometry [i](#)

Of 36 ligands modelled in this entry, 24 are monoatomic - leaving 12 for Mogul analysis.

In the following table, the Counts columns list the number of bonds (or angles) for which Mogul statistics could be retrieved, the number of bonds (or angles) that are observed in the model and

the number of bonds (or angles) that are defined in the chemical component dictionary. The Link column lists molecule types, if any, to which the group is linked. The Z score for a bond length (or angle) is the number of standard deviations the observed value is removed from the expected value. A bond length (or angle) with $|Z| > 2$ is considered an outlier worth inspection. RMSZ is the root-mean-square of all Z scores of the bond lengths (or angles).

Mol	Type	Chain	Res	Link	Bond lengths			Bond angles		
					Counts	RMSZ	# Z > 2	Counts	RMSZ	# Z > 2
2	P3S	A	500	4	10,14,14	1.33	2 (20%)	6,21,21	0.76	0
3	ADP	A	501	4	22,29,29	1.06	2 (9%)	27,45,45	1.92	4 (14%)
2	P3S	B	500	4	10,14,14	1.37	2 (20%)	6,21,21	1.41	1 (16%)
3	ADP	B	501	4	22,29,29	1.06	1 (4%)	27,45,45	1.86	5 (18%)
2	P3S	C	500	4	10,14,14	1.35	2 (20%)	6,21,21	1.61	1 (16%)
3	ADP	C	501	4	22,29,29	1.01	1 (4%)	27,45,45	2.03	5 (18%)
2	P3S	D	500	4	10,14,14	1.37	2 (20%)	6,21,21	2.39	1 (16%)
3	ADP	D	501	4	22,29,29	1.08	2 (9%)	27,45,45	1.92	3 (11%)
2	P3S	E	500	4	10,14,14	1.53	3 (30%)	6,21,21	1.52	1 (16%)
3	ADP	E	501	4	22,29,29	1.08	2 (9%)	27,45,45	1.99	5 (18%)
2	P3S	F	500	4	10,14,14	1.41	2 (20%)	6,21,21	0.71	0
3	ADP	F	501	4	22,29,29	1.09	1 (4%)	27,45,45	1.76	3 (11%)

In the following table, the Chirals column lists the number of chiral outliers, the number of chiral centers analysed, the number of these observed in the model and the number defined in the chemical component dictionary. Similar counts are reported in the Torsion and Rings columns. '-' means no outliers of that kind were identified.

Mol	Type	Chain	Res	Link	Chirals	Torsions	Rings
2	P3S	A	500	4	-	0/5/16/16	0/0/0/0
3	ADP	A	501	4	-	0/12/32/32	0/3/3/3
2	P3S	B	500	4	-	0/5/16/16	0/0/0/0
3	ADP	B	501	4	-	0/12/32/32	0/3/3/3
2	P3S	C	500	4	-	0/5/16/16	0/0/0/0
3	ADP	C	501	4	-	0/12/32/32	0/3/3/3
2	P3S	D	500	4	-	0/5/16/16	0/0/0/0
3	ADP	D	501	4	-	0/12/32/32	0/3/3/3
2	P3S	E	500	4	-	0/5/16/16	0/0/0/0
3	ADP	E	501	4	-	0/12/32/32	0/3/3/3
2	P3S	F	500	4	-	0/5/16/16	0/0/0/0
3	ADP	F	501	4	-	0/12/32/32	0/3/3/3

All (22) bond length outliers are listed below:

Mol	Chain	Res	Type	Atoms	Z	Observed(Å)	Ideal(Å)
2	F	500	P3S	PA-NE	2.02	1.67	1.59
3	E	501	ADP	O4'-C1'	2.03	1.43	1.41
2	E	500	P3S	PA-NE	2.05	1.67	1.59
2	E	500	P3S	CG-SD	2.11	1.81	1.79
2	C	500	P3S	PA-NE	2.12	1.68	1.59
3	A	501	ADP	O4'-C1'	2.14	1.43	1.41
2	D	500	P3S	PA-NE	2.14	1.68	1.59
2	B	500	P3S	PA-NE	2.20	1.68	1.59
3	D	501	ADP	O4'-C1'	2.21	1.44	1.41
2	A	500	P3S	PA-NE	2.30	1.68	1.59
2	A	500	P3S	PA-O1A	2.56	1.51	1.46
2	B	500	P3S	PA-O1A	2.64	1.51	1.46
2	C	500	P3S	PA-O1A	2.67	1.51	1.46
2	D	500	P3S	PA-O1A	2.87	1.51	1.46
2	F	500	P3S	PA-O1A	2.89	1.51	1.46
3	A	501	ADP	C5-C4	2.95	1.47	1.40
2	E	500	P3S	PA-O1A	3.05	1.51	1.46
3	C	501	ADP	C5-C4	3.17	1.47	1.40
3	D	501	ADP	C5-C4	3.19	1.47	1.40
3	F	501	ADP	C5-C4	3.28	1.47	1.40
3	B	501	ADP	C5-C4	3.29	1.47	1.40
3	E	501	ADP	C5-C4	3.33	1.48	1.40

All (29) bond angle outliers are listed below:

Mol	Chain	Res	Type	Atoms	Z	Observed(°)	Ideal(°)
3	C	501	ADP	N3-C2-N1	-8.40	122.46	128.89
3	E	501	ADP	N3-C2-N1	-8.06	122.72	128.89
3	A	501	ADP	N3-C2-N1	-8.04	122.74	128.89
3	D	501	ADP	N3-C2-N1	-7.96	122.80	128.89
3	B	501	ADP	N3-C2-N1	-7.63	123.05	128.89
3	F	501	ADP	N3-C2-N1	-7.11	123.45	128.89
2	D	500	P3S	OE-SD-CG	-5.73	104.25	108.23
2	C	500	P3S	OE-SD-CG	-3.81	105.59	108.23
2	E	500	P3S	OE-SD-CG	-3.16	106.04	108.23
3	E	501	ADP	C1'-N9-C4	-3.05	122.34	126.94
3	E	501	ADP	C4-C5-N7	-2.96	106.75	109.48
3	D	501	ADP	C4-C5-N7	-2.90	106.81	109.48
3	C	501	ADP	C1'-N9-C4	-2.85	122.65	126.94
3	C	501	ADP	C4-C5-N7	-2.83	106.87	109.48
2	B	500	P3S	OE-SD-CG	-2.80	106.28	108.23
3	F	501	ADP	C4-C5-N7	-2.69	107.01	109.48
3	A	501	ADP	C4-C5-N7	-2.41	107.26	109.48

Continued on next page...

Continued from previous page...

Mol	Chain	Res	Type	Atoms	Z	Observed(°)	Ideal(°)
3	B	501	ADP	C4-C5-N7	-2.41	107.26	109.48
3	B	501	ADP	C1'-N9-C4	-2.40	123.32	126.94
3	A	501	ADP	C1'-N9-C4	-2.31	123.46	126.94
3	D	501	ADP	C1'-N9-C4	-2.21	123.61	126.94
3	C	501	ADP	PA-O3A-PB	-2.10	125.63	132.67
3	B	501	ADP	O3B-PB-O2B	2.03	115.10	107.38
3	E	501	ADP	O3B-PB-O2B	2.06	115.23	107.38
3	B	501	ADP	C2-N1-C6	2.09	122.50	118.77
3	A	501	ADP	O4'-C1'-N9	2.18	112.67	108.10
3	C	501	ADP	C2-N1-C6	2.19	122.69	118.77
3	F	501	ADP	O3B-PB-O2B	2.26	115.99	107.38
3	E	501	ADP	C2-N1-C6	2.46	123.16	118.77

There are no chirality outliers.

There are no torsion outliers.

There are no ring outliers.

No monomer is involved in short contacts.

5.7 Other polymers [i](#)

There are no such residues in this entry.

5.8 Polymer linkage issues [i](#)

There are no chain breaks in this entry.

6 Fit of model and data ⓘ

6.1 Protein, DNA and RNA chains ⓘ

In the following table, the column labelled ‘#RSRZ> 2’ contains the number (and percentage) of RSRZ outliers, followed by percent RSRZ outliers for the chain as percentile scores relative to all X-ray entries and entries of similar resolution. The OWAB column contains the minimum, median, 95th percentile and maximum values of the occupancy-weighted average B-factor per residue. The column labelled ‘Q< 0.9’ lists the number of (and percentage) of residues with an average occupancy less than 0.9.

Mol	Chain	Analysed	<RSRZ>	#RSRZ>2			OWAB(Å ²)	Q<0.9
1	A	475/486 (97%)	-0.31	6 (1%)	79	84	16, 23, 36, 48	0
1	B	475/486 (97%)	-0.25	8 (1%)	73	78	16, 26, 38, 53	0
1	C	475/486 (97%)	-0.17	10 (2%)	67	72	17, 26, 38, 51	0
1	D	475/486 (97%)	-0.25	7 (1%)	76	81	17, 25, 37, 51	0
1	E	475/486 (97%)	-0.34	1 (0%)	95	96	16, 23, 33, 47	0
1	F	475/486 (97%)	-0.31	4 (0%)	87	90	15, 23, 35, 48	0
All	All	2850/2916 (97%)	-0.27	36 (1%)	79	84	15, 24, 36, 53	0

All (36) RSRZ outliers are listed below:

Mol	Chain	Res	Type	RSRZ
1	B	414	ALA	5.2
1	D	410	PRO	4.6
1	C	411	GLU	4.0
1	A	414	ALA	3.9
1	B	410	PRO	3.6
1	C	414	ALA	3.5
1	A	411	GLU	3.5
1	C	5	THR	3.3
1	A	410	PRO	3.2
1	C	293	THR	3.1
1	D	44	LYS	2.9
1	B	4	LYS	2.8
1	C	410	PRO	2.7
1	B	411	GLU	2.6
1	F	410	PRO	2.6
1	A	4	LYS	2.5
1	F	44	LYS	2.5
1	D	5	THR	2.5
1	F	414	ALA	2.5

Continued on next page...

Continued from previous page...

Mol	Chain	Res	Type	RSRZ
1	B	284	ASP	2.4
1	D	414	ALA	2.4
1	C	44	LYS	2.4
1	A	17	LYS	2.4
1	B	285	GLY	2.4
1	C	409	PRO	2.3
1	D	170	ALA	2.3
1	D	415	SER	2.2
1	C	100	THR	2.2
1	C	292	GLU	2.2
1	B	415	SER	2.2
1	E	44	LYS	2.2
1	C	408	LEU	2.1
1	F	292	GLU	2.1
1	A	284	ASP	2.1
1	B	76	GLU	2.1
1	D	4	LYS	2.0

6.2 Non-standard residues in protein, DNA, RNA chains [i](#)

There are no non-standard protein/DNA/RNA residues in this entry.

6.3 Carbohydrates [i](#)

There are no carbohydrates in this entry.

6.4 Ligands [i](#)

In the following table, the Atoms column lists the number of modelled atoms in the group and the number defined in the chemical component dictionary. LLDF column lists the quality of electron density of the group with respect to its neighbouring residues in protein, DNA or RNA chains. The B-factors column lists the minimum, median, 95th percentile and maximum values of B factors of atoms in the group. The column labelled 'Q< 0.9' lists the number of atoms with occupancy less than 0.9.

Mol	Type	Chain	Res	Atoms	RSCC	RSR	LLDF	B-factors(Å ²)	Q<0.9
4	MG	C	502	1/1	0.97	0.09	0.27	24,24,24,24	0
2	P3S	A	500	15/15	0.98	0.09	-0.13	14,16,18,18	0
2	P3S	B	500	15/15	0.98	0.09	-0.37	17,20,21,21	0
2	P3S	E	500	15/15	0.98	0.08	-0.48	15,17,20,20	0

Continued on next page...

Continued from previous page...

Mol	Type	Chain	Res	Atoms	RSCC	RSR	LLDF	B-factors(Å ²)	Q<0.9
2	P3S	C	500	15/15	0.98	0.08	-0.67	22,23,24,25	0
2	P3S	F	500	15/15	0.98	0.08	-0.93	14,15,16,17	0
3	ADP	F	501	27/27	0.98	0.07	-1.01	19,22,23,24	0
2	P3S	D	500	15/15	0.98	0.08	-1.05	19,20,23,23	0
3	ADP	C	501	27/27	0.98	0.06	-1.38	23,26,27,28	0
3	ADP	B	501	27/27	0.98	0.06	-1.44	19,22,23,24	0
4	MG	D	503	1/1	0.98	0.08	-1.45	23,23,23,23	0
3	ADP	E	501	27/27	0.98	0.06	-1.48	18,20,21,21	0
3	ADP	D	501	27/27	0.98	0.07	-1.56	21,24,25,25	0
3	ADP	A	501	27/27	0.98	0.06	-1.64	17,21,21,22	0
4	MG	D	502	1/1	0.97	0.06	-1.74	22,22,22,22	0
5	CL	D	505	1/1	0.98	0.04	-1.84	28,28,28,28	0
5	CL	A	505	1/1	0.99	0.04	-2.02	22,22,22,22	0
4	MG	C	503	1/1	0.98	0.06	-2.08	21,21,21,21	0
5	CL	F	505	1/1	0.98	0.03	-2.17	32,32,32,32	0
4	MG	A	503	1/1	0.98	0.07	-2.26	22,22,22,22	0
4	MG	B	503	1/1	0.98	0.04	-2.36	24,24,24,24	0
4	MG	F	502	1/1	0.98	0.07	-2.56	15,15,15,15	0
5	CL	B	505	1/1	1.00	0.03	-2.58	22,22,22,22	0
4	MG	B	502	1/1	0.96	0.06	-2.82	20,20,20,20	0
4	MG	E	504	1/1	0.99	0.05	-3.13	17,17,17,17	0
5	CL	C	505	1/1	0.99	0.02	-3.14	22,22,22,22	0
4	MG	A	502	1/1	0.98	0.04	-3.22	21,21,21,21	0
4	MG	E	502	1/1	0.99	0.05	-3.34	18,18,18,18	0
4	MG	E	503	1/1	0.95	0.05	-3.35	21,21,21,21	0
4	MG	F	503	1/1	0.99	0.03	-3.65	18,18,18,18	0
5	CL	E	505	1/1	0.99	0.04	-3.90	27,27,27,27	0
4	MG	F	504	1/1	0.98	0.04	-	21,21,21,21	0
4	MG	C	504	1/1	0.95	0.04	-	22,22,22,22	0
4	MG	A	504	1/1	0.96	0.04	-	16,16,16,16	0
4	MG	B	504	1/1	0.98	0.03	-	19,19,19,19	0
4	MG	D	504	1/1	0.97	0.03	-	23,23,23,23	0

6.5 Other polymers ⓘ

There are no such residues in this entry.