



Full wwPDB X-ray Structure Validation Report ⓘ

Feb 1, 2016 – 03:13 PM GMT

PDB ID : 4BVN
Title : Ultra-thermostable beta1-adrenoceptor with cyanopindolol bound
Authors : Miller, J.; Nehme, R.; Warne, T.; Edwards, P.C.; Leslie, A.G.W.; Schertler, G.; Tate, C.G.
Deposited on : 2013-06-26
Resolution : 2.10 Å(reported)

This is a Full wwPDB X-ray Structure Validation Report for a publicly released PDB entry.
We welcome your comments at validation@mail.wwpdb.org
A user guide is available at
<http://wwpdb.org/validation/2016/XrayValidationReportHelp>
with specific help available everywhere you see the ⓘ symbol.

The following versions of software and data (see [references ⓘ](#)) were used in the production of this report:

MolProbity : 4.02b-467
Mogul : 1.7 (RC4), CSD as536be (2015)
Xtriage (Phenix) : 1.9-1692
EDS : rb-20026688
Percentile statistics : 20151230.v01 (using entries in the PDB archive December 30th 2015)
Refmac : 5.8.0135
CCP4 : 6.5.0
Ideal geometry (proteins) : Engh & Huber (2001)
Ideal geometry (DNA, RNA) : Parkinson et al. (1996)
Validation Pipeline (wwPDB-VP) : trunk26865

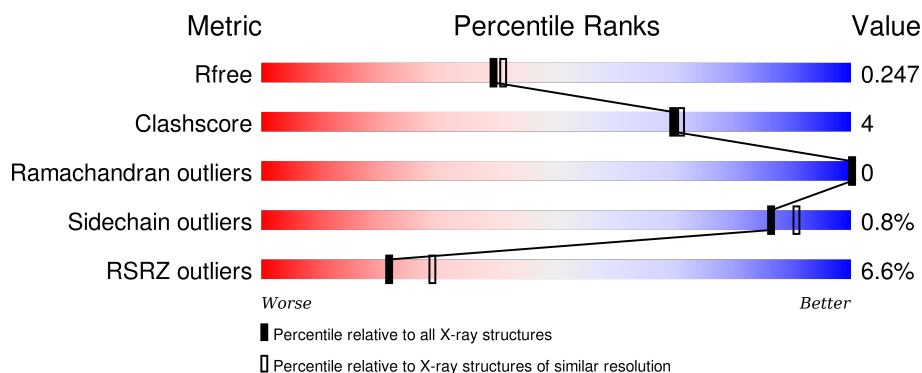
1 Overall quality at a glance

The following experimental techniques were used to determine the structure:

X-RAY DIFFRACTION

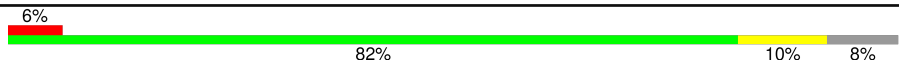
The reported resolution of this entry is 2.10 Å.

Percentile scores (ranging between 0-100) for global validation metrics of the entry are shown in the following graphic. The table shows the number of entries on which the scores are based.



Metric	Whole archive (#Entries)	Similar resolution (#Entries, resolution range(Å))
R_{free}	91344	3939 (2.10-2.10)
Clashscore	102246	4460 (2.10-2.10)
Ramachandran outliers	100387	4413 (2.10-2.10)
Sidechain outliers	100360	4414 (2.10-2.10)
RSRZ outliers	91569	3948 (2.10-2.10)

The table below summarises the geometric issues observed across the polymeric chains and their fit to the electron density. The red, orange, yellow and green segments on the lower bar indicate the fraction of residues that contain outliers for ≥ 3 , 2, 1 and 0 types of geometric quality criteria. A grey segment represents the fraction of residues that are not modelled. The numeric value for each fraction is indicated below the corresponding segment, with a dot representing fractions $\leq 5\%$. The upper red bar (where present) indicates the fraction of residues that have poor fit to the electron density. The numeric value is given above the bar.

Mol	Chain	Length	Quality of chain
1	A	315	

The following table lists non-polymeric compounds, carbohydrate monomers and non-standard residues in protein, DNA, RNA chains that are outliers for geometric or electron-density-fit criteria:

Mol	Type	Chain	Res	Chirality	Geometry	Clashes	Electron density
5	OLC	A	2002	-	-	-	X

Continued on next page...

Continued from previous page...

Mol	Type	Chain	Res	Chirality	Geometry	Clashes	Electron density
5	OLC	A	2003	-	-	-	X
5	OLC	A	2004	-	-	-	X
5	OLC	A	2006	-	-	-	X

2 Entry composition

There are 6 unique types of molecules in this entry. The entry contains 2506 atoms, of which 0 are hydrogens and 0 are deuteriums.

In the tables below, the ZeroOcc column contains the number of atoms modelled with zero occupancy, the AltConf column contains the number of residues with at least one atom in alternate conformation and the Trace column contains the number of residues modelled with at most 2 atoms.

- Molecule 1 is a protein called BETA-1 ADRENERGIC RECEPTOR.

Mol	Chain	Residues	Atoms					ZeroOcc	AltConf	Trace
1	A	289	Total	C	N	O	S	0	1	0
			2301	1518	384	378	21			

There are 18 discrepancies between the modelled and reference sequences:

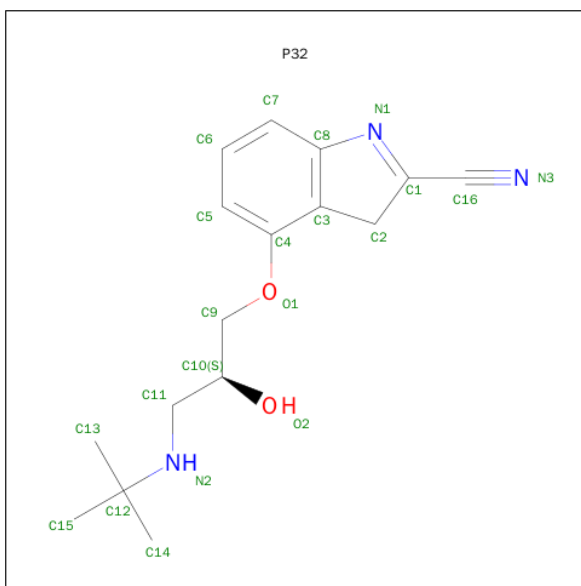
Chain	Residue	Modelled	Actual	Comment	Reference
A	31	MET	-	EXPRESSION TAG	UNP P07700
A	32	GLY	-	EXPRESSION TAG	UNP P07700
A	68	SER	ARG	ENGINEERED MUTATION	UNP P07700
A	90	VAL	MET	ENGINEERED MUTATION	UNP P07700
A	116	LEU	CYS	ENGINEERED MUTATION	UNP P07700
A	129	VAL	ILE	ENGINEERED MUTATION	UNP P07700
A	227	ALA	TYR	ENGINEERED MUTATION	UNP P07700
A	282	LEU	ALA	ENGINEERED MUTATION	UNP P07700
A	322	LYS	ASP	ENGINEERED MUTATION	UNP P07700
A	327	ALA	PHE	ENGINEERED MUTATION	UNP P07700
A	338	MET	PHE	ENGINEERED MUTATION	UNP P07700
A	343	LEU	TYR	ENGINEERED MUTATION	UNP P07700
A	358	ALA	CYS	ENGINEERED MUTATION	UNP P07700
A	369	HIS	-	EXPRESSION TAG	UNP P07700
A	370	HIS	-	EXPRESSION TAG	UNP P07700
A	371	HIS	-	EXPRESSION TAG	UNP P07700
A	372	HIS	-	EXPRESSION TAG	UNP P07700
A	373	HIS	-	EXPRESSION TAG	UNP P07700

- Molecule 2 is SODIUM ION (three-letter code: NA) (formula: Na).

Mol	Chain	Residues	Atoms		ZeroOcc	AltConf
2	A	2	Total	Na	0	0
			2	2		

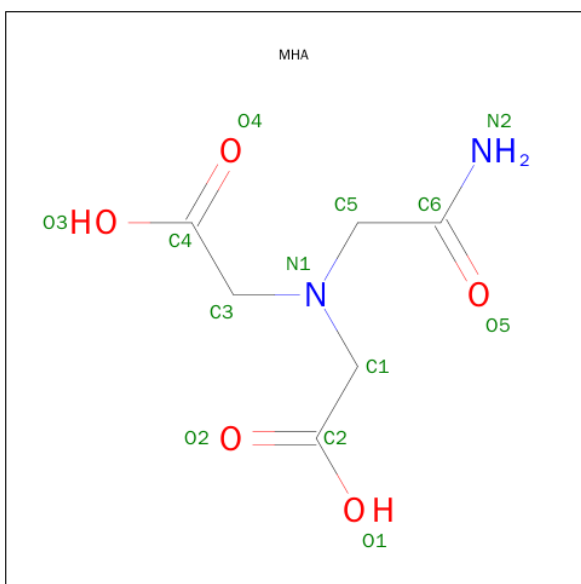
- Molecule 3 is 4-{{(2S)-3-(TERT-BUTYLAMINO)-2-HYDROXYPROPYL}OXY}-3H-INDO

LE-2-CARBONITRILE (three-letter code: P32) (formula: $C_{16}H_{21}N_3O_2$).



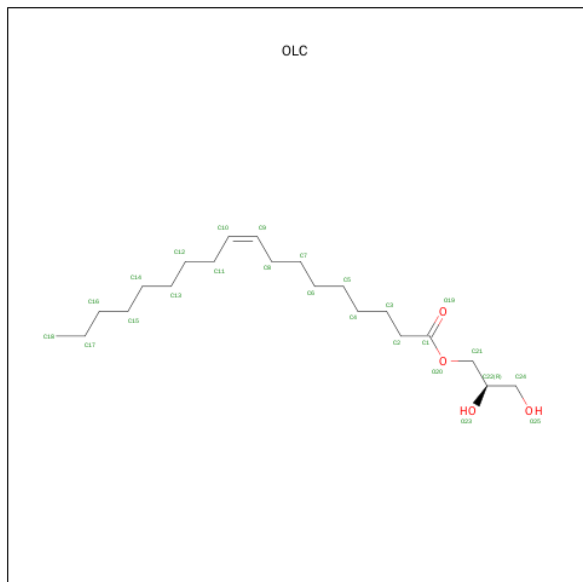
Mol	Chain	Residues	Atoms				ZeroOcc	AltConf
3	A	1	Total	C	N	O	0	0
			21	16	3	2		

- Molecule 4 is (CARBAMOYLMETHYL-CARBOXYMETHYL-AMINO)-ACETIC ACID (three-letter code: MHA) (formula: $C_6H_{10}N_2O_5$).



Mol	Chain	Residues	Atoms				ZeroOcc	AltConf
4	A	1	Total	C	N	O	0	0
			13	6	2	5		

- Molecule 5 is (2R)-2,3-DIHYDROXYPROPYL (9Z)-OCTADEC-9-ENOATE (three-letter code: OLC) (formula: C₂₁H₄₀O₄).



Mol	Chain	Residues	Atoms	ZeroOcc	AltConf
5	A	1	Total C O 20 18 2	0	0
5	A	1	Total C O 25 21 4	0	0
5	A	1	Total C 16 16	0	0
5	A	1	Total C 11 11	0	0
5	A	1	Total C 17 17	0	0
5	A	1	Total C O 25 21 4	0	0
5	A	1	Total C O 17 15 2	0	0

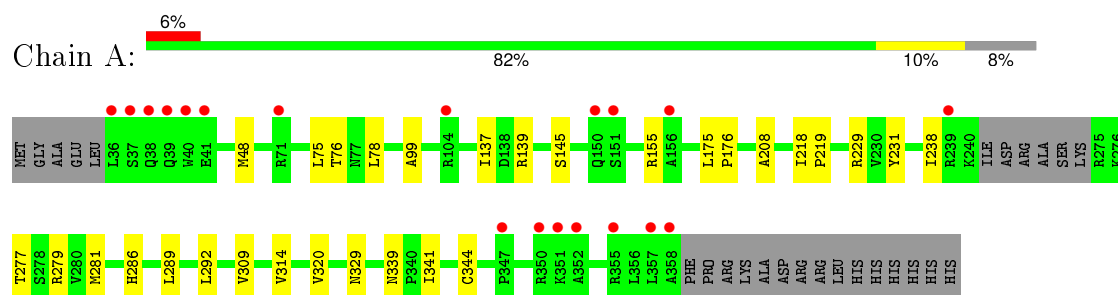
- Molecule 6 is water.

Mol	Chain	Residues	Atoms	ZeroOcc	AltConf
6	A	38	Total O 38 38	0	0

3 Residue-property plots [i](#)

These plots are drawn for all protein, RNA and DNA chains in the entry. The first graphic for a chain summarises the proportions of errors displayed in the second graphic. The second graphic shows the sequence view annotated by issues in geometry and electron density. Residues are color-coded according to the number of geometric quality criteria for which they contain at least one outlier: green = 0, yellow = 1, orange = 2 and red = 3 or more. A red dot above a residue indicates a poor fit to the electron density ($\text{RSRZ} > 2$). Stretches of 2 or more consecutive residues without any outlier are shown as a green connector. Residues present in the sample, but not in the model, are shown in grey.

• Molecule 1: BETA-1 ADRENERGIC RECEPTOR



4 Data and refinement statistics

Property	Value	Source
Space group	P 2 ₁ 2 ₁ 2 ₁	Depositor
Cell constants a, b, c, α , β , γ	53.09 Å 62.13 Å 95.78 Å 90.00° 90.00° 90.00°	Depositor
Resolution (Å)	30.88 – 2.10 30.86 – 2.10	Depositor EDS
% Data completeness (in resolution range)	97.5 (30.88-2.10) 97.6 (30.86-2.10)	Depositor EDS
R_{merge}	0.13	Depositor
R_{sym}	(Not available)	Depositor
$\langle I/\sigma(I) \rangle$ ¹	1.80 (at 2.10 Å)	Xtriage
Refinement program	REFMAC 5.7.0032	Depositor
R, R_{free}	0.193 , 0.246 0.201 , 0.247	Depositor DCC
R_{free} test set	964 reflections (5.45%)	DCC
Wilson B-factor (Å ²)	26.3	Xtriage
Anisotropy	0.080	Xtriage
Bulk solvent k_{sol} (e/Å ³), B_{sol} (Å ²)	0.38 , 83.5	EDS
Estimated twinning fraction	No twinning to report.	Xtriage
L-test for twinning ²	$\langle L \rangle = 0.46$, $\langle L^2 \rangle = 0.29$	Xtriage
Outliers	1 of 18660 reflections (0.005%)	Xtriage
F_o, F_c correlation	0.93	EDS
Total number of atoms	2506	wwPDB-VP
Average B, all atoms (Å ²)	33.0	wwPDB-VP

Xtriage's analysis on translational NCS is as follows: *The largest off-origin peak in the Patterson function is 7.15% of the height of the origin peak. No significant pseudotranslation is detected.*

¹Intensities estimated from amplitudes.

²Theoretical values of $\langle |L| \rangle$, $\langle L^2 \rangle$ for acentric reflections are 0.5, 0.375 respectively for untwinned datasets, and 0.333, 0.2 for perfectly twinned datasets.

5 Model quality

5.1 Standard geometry

Bond lengths and bond angles in the following residue types are not validated in this section: P32, NA, OLC, MHA

The Z score for a bond length (or angle) is the number of standard deviations the observed value is removed from the expected value. A bond length (or angle) with $|Z| > 5$ is considered an outlier worth inspection. RMSZ is the root-mean-square of all Z scores of the bond lengths (or angles).

Mol	Chain	Bond lengths		Bond angles	
		RMSZ	$\# Z > 5$	RMSZ	$\# Z > 5$
1	A	0.70	0/2357	0.76	0/3208

There are no bond length outliers.

There are no bond angle outliers.

There are no chirality outliers.

There are no planarity outliers.

5.2 Too-close contacts

In the following table, the Non-H and H(model) columns list the number of non-hydrogen atoms and hydrogen atoms in the chain respectively. The H(added) column lists the number of hydrogen atoms added and optimized by MolProbity. The Clashes column lists the number of clashes within the asymmetric unit, whereas Symm-Clashes lists symmetry related clashes.

Mol	Chain	Non-H	H(model)	H(added)	Clashes	Symm-Clashes
1	A	2301	0	2410	22	1
2	A	2	0	0	0	0
3	A	21	0	21	0	0
4	A	13	0	8	0	0
5	A	131	0	214	7	0
6	A	38	0	0	2	0
All	All	2506	0	2653	23	1

The all-atom clashscore is defined as the number of clashes found per 1000 atoms (including hydrogen atoms). The all-atom clashscore for this structure is 4.

All (23) close contacts within the same asymmetric unit are listed below, sorted by their clash magnitude.

Atom-1	Atom-2	Interatomic distance (Å)	Clash overlap (Å)
1:A:238:ILE:O	1:A:279:ARG:NH1	2.26	0.69
1:A:139:ARG:HH22	5:A:2007:OLC:H2	1.66	0.60
1:A:75:LEU:H	5:A:2007:OLC:C21	2.13	0.60
1:A:339:ASN:HB2	6:A:3007:HOH:O	2.02	0.59
1:A:175:LEU:HB3	1:A:176:PRO:HD3	1.87	0.56
1:A:341:ILE:O	1:A:344:CYS:HB2	2.06	0.55
1:A:277:THR:HG22	1:A:281:MET:HB2	1.90	0.53
1:A:289:LEU:HD21	5:A:2007:OLC:H10	1.92	0.52
1:A:48:MET:HG3	1:A:99:ALA:HB1	1.92	0.51
1:A:78:LEU:HD21	1:A:155:ARG:HG3	1.93	0.50
1:A:339:ASN:CB	6:A:3007:HOH:O	2.57	0.50
1:A:208:ALA:CB	1:A:314:VAL:HG11	2.42	0.49
1:A:309:VAL:HG13	1:A:320:VAL:HG21	1.94	0.49
1:A:137:ILE:HD13	5:A:2006:OLC:H3	1.94	0.48
1:A:238:ILE:HG23	1:A:286:HIS:CE1	2.50	0.47
1:A:75:LEU:O	1:A:78:LEU:HB2	2.17	0.44
1:A:277:THR:CG2	1:A:281:MET:HB2	2.49	0.43
1:A:78:LEU:HD21	1:A:155:ARG:CG	2.49	0.43
1:A:176:PRO:HG2	5:A:2001:OLC:H15	2.00	0.42
1:A:218:ILE:HB	1:A:219:PRO:HD3	2.01	0.42
1:A:231:TYR:CD1	5:A:2003:OLC:H9	2.55	0.41
1:A:76:THR:HG21	1:A:292:LEU:HD11	2.02	0.41
5:A:2006:OLC:H8A	5:A:2006:OLC:H11	1.91	0.40

All (1) symmetry-related close contacts are listed below. The label for Atom-2 includes the symmetry operator and encoded unit-cell translations to be applied.

Atom-1	Atom-2	Interatomic distance (Å)	Clash overlap (Å)
1:A:145:SER:OG	1:A:145:SER:OG[2_455]	1.90	0.30

5.3 Torsion angles ⓘ

5.3.1 Protein backbone ⓘ

In the following table, the Percentiles column shows the percent Ramachandran outliers of the chain as a percentile score with respect to all X-ray entries followed by that with respect to entries of similar resolution.

The Analysed column shows the number of residues for which the backbone conformation was analysed, and the total number of residues.

Mol	Chain	Analysed	Favoured	Allowed	Outliers	Percentiles	
1	A	286/315 (91%)	283 (99%)	3 (1%)	0	100	100

There are no Ramachandran outliers to report.

5.3.2 Protein sidechains ⓘ

In the following table, the Percentiles column shows the percent sidechain outliers of the chain as a percentile score with respect to all X-ray entries followed by that with respect to entries of similar resolution.

The Analysed column shows the number of residues for which the sidechain conformation was analysed, and the total number of residues.

Mol	Chain	Analysed	Rotameric	Outliers	Percentiles	
1	A	252/273 (92%)	250 (99%)	2 (1%)	86	91

All (2) residues with a non-rotameric sidechain are listed below:

Mol	Chain	Res	Type
1	A	229	ARG
1	A	329	ASN

Some sidechains can be flipped to improve hydrogen bonding and reduce clashes. All (1) such sidechains are listed below:

Mol	Chain	Res	Type
1	A	286	HIS

5.3.3 RNA ⓘ

There are no RNA molecules in this entry.

5.4 Non-standard residues in protein, DNA, RNA chains ⓘ

There are no non-standard protein/DNA/RNA residues in this entry.

5.5 Carbohydrates ⓘ

There are no carbohydrates in this entry.

5.6 Ligand geometry

Of 11 ligands modelled in this entry, 2 are monoatomic - leaving 9 for Mogul analysis.

In the following table, the Counts columns list the number of bonds (or angles) for which Mogul statistics could be retrieved, the number of bonds (or angles) that are observed in the model and the number of bonds (or angles) that are defined in the chemical component dictionary. The Link column lists molecule types, if any, to which the group is linked. The Z score for a bond length (or angle) is the number of standard deviations the observed value is removed from the expected value. A bond length (or angle) with $|Z| > 2$ is considered an outlier worth inspection. RMSZ is the root-mean-square of all Z scores of the bond lengths (or angles).

Mol	Type	Chain	Res	Link	Bond lengths			Bond angles		
					Counts	RMSZ	# $ Z > 2$	Counts	RMSZ	# $ Z > 2$
3	P32	A	1361	-	21,22,22	3.46	8 (38%)	26,31,31	1.58	6 (23%)
4	MHA	A	1362	-	6,12,12	1.89	1 (16%)	9,15,15	1.66	1 (11%)
5	OLC	A	2001	-	16,19,24	0.25	0	16,19,25	0.47	0
5	OLC	A	2002	-	24,24,24	0.94	1 (4%)	25,25,25	0.79	2 (8%)
5	OLC	A	2003	-	15,15,24	1.55	2 (13%)	14,14,25	1.23	1 (7%)
5	OLC	A	2004	-	10,10,24	1.26	2 (20%)	9,9,25	1.18	1 (11%)
5	OLC	A	2005	-	16,16,24	0.23	0	15,15,25	0.61	0
5	OLC	A	2006	-	24,24,24	0.93	1 (4%)	25,25,25	0.99	2 (8%)
5	OLC	A	2007	-	16,16,24	1.09	1 (6%)	15,16,25	0.75	0

In the following table, the Chirals column lists the number of chiral outliers, the number of chiral centers analysed, the number of these observed in the model and the number defined in the chemical component dictionary. Similar counts are reported in the Torsion and Rings columns. '-' means no outliers of that kind were identified.

Mol	Type	Chain	Res	Link	Chirals	Torsions	Rings
3	P32	A	1361	-	-	0/11/21/21	0/2/2/2
4	MHA	A	1362	-	-	0/8/12/12	0/0/0/0
5	OLC	A	2001	-	-	0/15/17/24	0/0/0/0
5	OLC	A	2002	-	-	0/24/24/24	0/0/0/0
5	OLC	A	2003	-	-	0/13/13/24	0/0/0/0
5	OLC	A	2004	-	-	0/8/8/24	0/0/0/0
5	OLC	A	2005	-	-	0/14/14/24	0/0/0/0
5	OLC	A	2006	-	-	0/24/24/24	0/0/0/0
5	OLC	A	2007	-	-	0/15/15/24	0/0/0/0

All (16) bond length outliers are listed below:

Mol	Chain	Res	Type	Atoms	Z	Observed(Å)	Ideal(Å)
3	A	1361	P32	C2-C3	-9.89	1.33	1.51

Continued on next page...

Continued from previous page...

Mol	Chain	Res	Type	Atoms	Z	Observed(Å)	Ideal(Å)
5	A	2003	OLC	C12-C11	-4.80	1.34	1.52
3	A	1361	P32	C4-C3	-3.65	1.35	1.40
3	A	1361	P32	C8-N1	-3.13	1.33	1.39
3	A	1361	P32	C7-C8	-3.12	1.34	1.40
3	A	1361	P32	O1-C9	-2.46	1.36	1.44
5	A	2004	OLC	C17-C16	-2.31	1.34	1.51
3	A	1361	P32	C12-N2	2.46	1.53	1.49
5	A	2004	OLC	C10-C9	3.11	1.52	1.29
5	A	2003	OLC	C9-C10	3.47	1.51	1.31
5	A	2007	OLC	O20-C1	3.94	1.46	1.32
4	A	1362	MHA	C5-C6	3.96	1.57	1.52
5	A	2006	OLC	O20-C1	4.21	1.46	1.33
5	A	2002	OLC	O20-C1	4.28	1.46	1.33
3	A	1361	P32	C16-C1	4.48	1.48	1.44
3	A	1361	P32	C16-N3	8.67	1.29	1.14

All (13) bond angle outliers are listed below:

Mol	Chain	Res	Type	Atoms	Z	Observed(°)	Ideal(°)
4	A	1362	MHA	C4-C3-N1	-3.83	107.86	113.53
3	A	1361	P32	C11-N2-C12	-3.44	112.82	116.50
3	A	1361	P32	C3-C8-N1	-3.04	108.31	111.86
3	A	1361	P32	C11-C10-C9	-2.95	105.33	110.43
3	A	1361	P32	C2-C1-N1	-2.71	109.46	113.67
5	A	2003	OLC	C11-C10-C9	-2.46	108.22	125.34
5	A	2004	OLC	C11-C10-C9	-2.41	110.39	133.31
5	A	2006	OLC	O20-C1-O19	-2.33	117.47	123.49
3	A	1361	P32	C7-C6-C5	-2.01	117.37	120.24
5	A	2002	OLC	O20-C1-C2	2.08	118.22	111.90
5	A	2002	OLC	C21-O20-C1	2.10	122.73	116.85
3	A	1361	P32	C3-C2-C1	2.66	107.41	102.86
5	A	2006	OLC	O20-C1-C2	3.52	122.64	111.90

There are no chirality outliers.

There are no torsion outliers.

There are no ring outliers.

4 monomers are involved in 7 short contacts:

Mol	Chain	Res	Type	Clashes	Symm-Clashes
5	A	2001	OLC	1	0
5	A	2003	OLC	1	0

Continued on next page...

Continued from previous page...

Mol	Chain	Res	Type	Clashes	Symm-Clashes
5	A	2006	OLC	2	0
5	A	2007	OLC	3	0

5.7 Other polymers [i](#)

There are no such residues in this entry.

5.8 Polymer linkage issues [i](#)

There are no chain breaks in this entry.

6 Fit of model and data ⓘ

6.1 Protein, DNA and RNA chains ⓘ

In the following table, the column labelled ‘#RSRZ> 2’ contains the number (and percentage) of RSRZ outliers, followed by percent RSRZ outliers for the chain as percentile scores relative to all X-ray entries and entries of similar resolution. The OWAB column contains the minimum, median, 95th percentile and maximum values of the occupancy-weighted average B-factor per residue. The column labelled ‘Q< 0.9’ lists the number of (and percentage) of residues with an average occupancy less than 0.9.

Mol	Chain	Analysed	<RSRZ>	#RSRZ>2	OWAB(Å ²)	Q<0.9
1	A	289/315 (91%)	0.14	19 (6%) 22 29	13, 28, 56, 87	0

All (19) RSRZ outliers are listed below:

Mol	Chain	Res	Type	RSRZ
1	A	36	LEU	5.7
1	A	37	SER	5.5
1	A	358	ALA	5.4
1	A	38	GLN	5.3
1	A	156	ALA	4.2
1	A	71	ARG	3.4
1	A	350	ARG	3.4
1	A	39	GLN	3.2
1	A	357	LEU	2.9
1	A	355	ARG	2.9
1	A	104	ARG	2.6
1	A	239	ARG	2.5
1	A	40	TRP	2.4
1	A	352	ALA	2.4
1	A	151	SER	2.3
1	A	347	PRO	2.3
1	A	351	LYS	2.2
1	A	150	GLN	2.1
1	A	41	GLU	2.0

6.2 Non-standard residues in protein, DNA, RNA chains ⓘ

There are no non-standard protein/DNA/RNA residues in this entry.

6.3 Carbohydrates [i](#)

There are no carbohydrates in this entry.

6.4 Ligands [i](#)

In the following table, the Atoms column lists the number of modelled atoms in the group and the number defined in the chemical component dictionary. LLDF column lists the quality of electron density of the group with respect to its neighbouring residues in protein, DNA or RNA chains. The B-factors column lists the minimum, median, 95th percentile and maximum values of B factors of atoms in the group. The column labelled 'Q< 0.9' lists the number of atoms with occupancy less than 0.9.

Mol	Type	Chain	Res	Atoms	RSCC	RSR	LLDF	B-factors(Å ²)	Q<0.9
5	OLC	A	2006	25/25	0.74	0.25	6.56	37,42,54,56	25
5	OLC	A	2002	25/25	0.66	0.23	4.30	44,60,75,81	0
5	OLC	A	2003	16/25	0.82	0.21	3.73	34,44,71,72	0
5	OLC	A	2004	11/25	0.86	0.18	3.47	42,44,50,52	0
4	MHA	A	1362	13/13	0.86	0.20	1.89	28,35,41,45	0
5	OLC	A	2001	20/25	0.78	0.18	1.69	45,49,61,71	0
5	OLC	A	2007	17/25	0.80	0.18	0.91	31,48,62,63	0
5	OLC	A	2005	17/25	0.87	0.16	0.72	46,51,60,60	17
3	P32	A	1361	21/21	0.95	0.11	0.65	16,19,22,22	0
2	NA	A	1359	1/1	0.91	0.11	-0.13	36,36,36,36	0
2	NA	A	1360	1/1	0.92	0.08	-0.64	25,25,25,25	0

6.5 Other polymers [i](#)

There are no such residues in this entry.