



Full wwPDB X-ray Structure Validation Report ⓘ

Feb 1, 2016 – 12:50 AM GMT

PDB ID : 2BXB
Title : HUMAN SERUM ALBUMIN COMPLEXED WITH OXYPHENBUTAZONE
Authors : Ghuman, J.; Zunszain, P.A.; Petitpas, I.; Bhattacharya, A.A.; Curry, S.
Deposited on : 2005-07-26
Resolution : 3.20 Å(reported)

This is a Full wwPDB X-ray Structure Validation Report for a publicly released PDB entry.
We welcome your comments at validation@mail.wwpdb.org
A user guide is available at
<http://wwpdb.org/validation/2016/XrayValidationReportHelp>
with specific help available everywhere you see the ⓘ symbol.

The following versions of software and data (see [references ⓘ](#)) were used in the production of this report:

MolProbity : 4.02b-467
Mogul : 1.7 (RC4), CSD as536be (2015)
Xtriage (Phenix) : 1.9-1692
EDS : rb-20026688
Percentile statistics : 20151230.v01 (using entries in the PDB archive December 30th 2015)
Refmac : 5.8.0135
CCP4 : 6.5.0
Ideal geometry (proteins) : Engh & Huber (2001)
Ideal geometry (DNA, RNA) : Parkinson et al. (1996)
Validation Pipeline (wwPDB-VP) : trunk26865

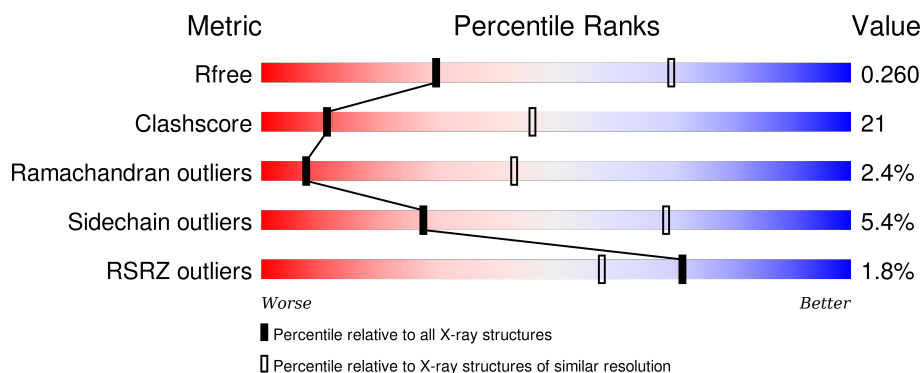
1 Overall quality at a glance

The following experimental techniques were used to determine the structure:

X-RAY DIFFRACTION

The reported resolution of this entry is 3.20 Å.

Percentile scores (ranging between 0-100) for global validation metrics of the entry are shown in the following graphic. The table shows the number of entries on which the scores are based.



Metric	Whole archive (#Entries)	Similar resolution (#Entries, resolution range(Å))
R_{free}	91344	1124 (3.24-3.16)
Clashscore	102246	1024 (3.22-3.18)
Ramachandran outliers	100387	1004 (3.22-3.18)
Sidechain outliers	100360	1003 (3.22-3.18)
RSRZ outliers	91569	1129 (3.24-3.16)

The table below summarises the geometric issues observed across the polymeric chains and their fit to the electron density. The red, orange, yellow and green segments on the lower bar indicate the fraction of residues that contain outliers for ≥ 3 , 2, 1 and 0 types of geometric quality criteria. A grey segment represents the fraction of residues that are not modelled. The numeric value for each fraction is indicated below the corresponding segment, with a dot representing fractions $\leq 5\%$. The upper red bar (where present) indicates the fraction of residues that have poor fit to the electron density. The numeric value is given above the bar.

Mol	Chain	Length	Quality of chain
1	A	585	
1	B	585	

The following table lists non-polymeric compounds, carbohydrate monomers and non-standard residues in protein, DNA, RNA chains that are outliers for geometric or electron-density-fit criteria:

Mol	Type	Chain	Res	Chirality	Geometry	Clashes	Electron density
2	OPB	A	2001	X	-	-	-
2	OPB	B	2001	X	-	-	-

2 Entry composition [i](#)

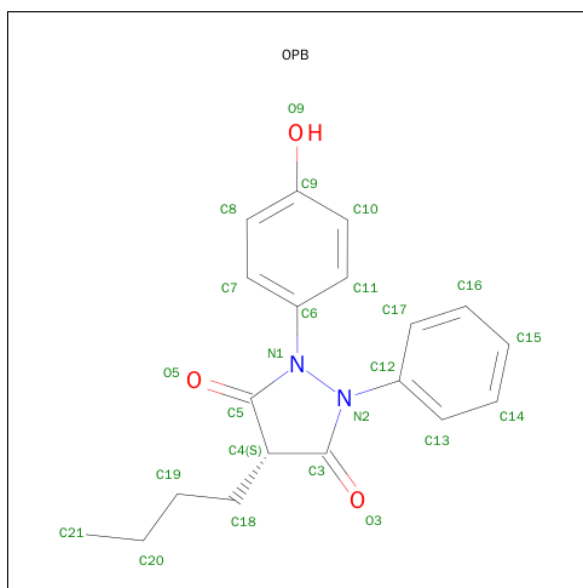
There are 2 unique types of molecules in this entry. The entry contains 8790 atoms, of which 0 are hydrogens and 0 are deuteriums.

In the tables below, the ZeroOcc column contains the number of atoms modelled with zero occupancy, the AltConf column contains the number of residues with at least one atom in alternate conformation and the Trace column contains the number of residues modelled with at most 2 atoms.

- Molecule 1 is a protein called SERUM ALBUMIN.

Mol	Chain	Residues	Atoms					ZeroOcc	AltConf	Trace
1	A	578	Total	C	N	O	S	0	0	0
			4374	2754	732	847	41			
1	B	578	Total	C	N	O	S	0	0	0
			4368	2746	735	847	40			

- Molecule 2 is 4-BUTYL-1-(4-HYDROXYPHENYL)-2-PHENYLPYRAZOLIDINE-3,5-DIONE (three-letter code: OPB) (formula: $C_{19}H_{20}N_2O_3$).

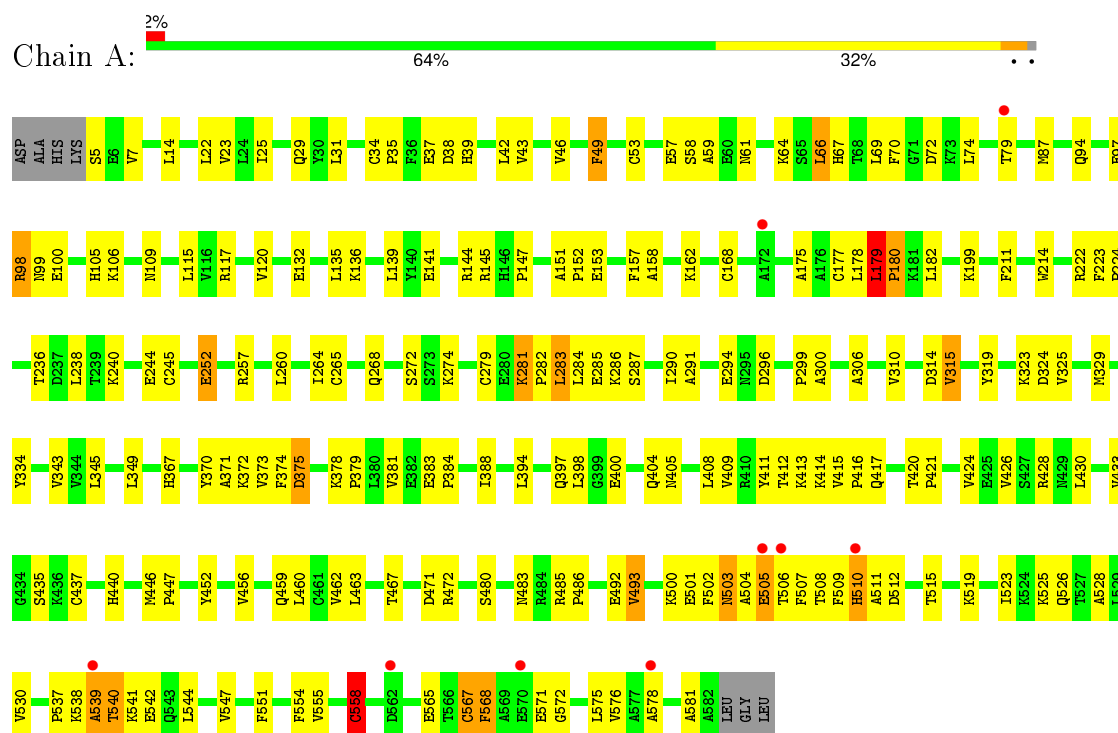


Mol	Chain	Residues	Atoms				ZeroOcc	AltConf
2	A	1	Total	C	N	O	0	0
			24	19	2	3		
2	B	1	Total	C	N	O	0	0
			24	19	2	3		

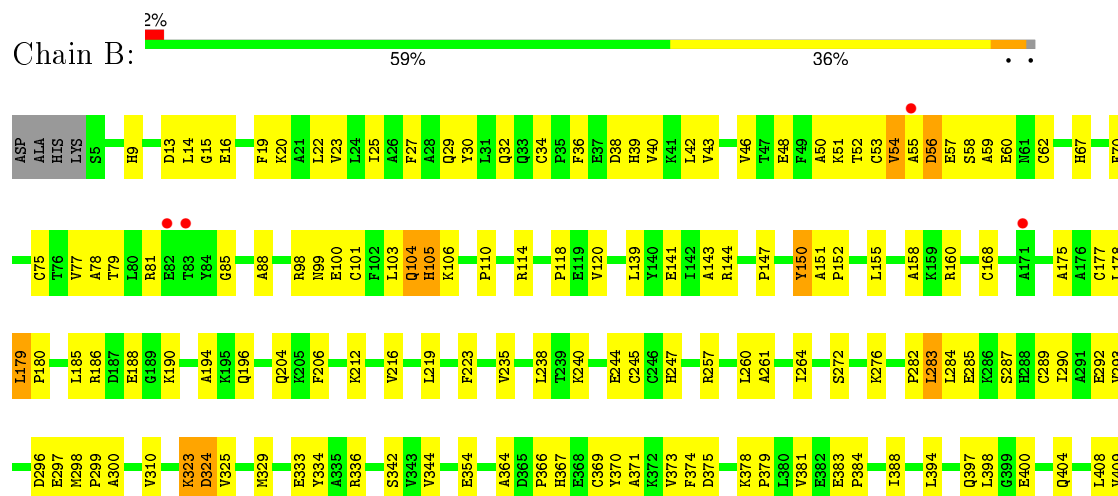
3 Residue-property plots

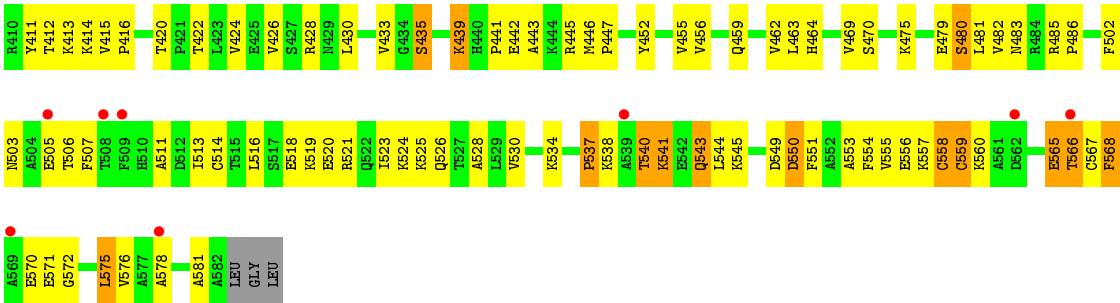
These plots are drawn for all protein, RNA and DNA chains in the entry. The first graphic for a chain summarises the proportions of errors displayed in the second graphic. The second graphic shows the sequence view annotated by issues in geometry and electron density. Residues are color-coded according to the number of geometric quality criteria for which they contain at least one outlier: green = 0, yellow = 1, orange = 2 and red = 3 or more. A red dot above a residue indicates a poor fit to the electron density ($RSRZ > 2$). Stretches of 2 or more consecutive residues without any outlier are shown as a green connector. Residues present in the sample, but not in the model, are shown in grey.

• Molecule 1: SERUM ALBUMIN



• Molecule 1: SERUM ALBUMIN





4 Data and refinement statistics

Property	Value	Source
Space group	P 1	Depositor
Cell constants a, b, c, α , β , γ	55.16Å 55.50Å 120.51Å 81.33° 90.52° 65.38°	Depositor
Resolution (Å)	22.88 – 3.20 22.88 – 3.20	Depositor EDS
% Data completeness (in resolution range)	97.8 (22.88-3.20) 92.0 (22.88-3.20)	Depositor EDS
R_{merge}	0.07	Depositor
R_{sym}	(Not available)	Depositor
$\langle I/\sigma(I) \rangle$ ¹	2.48 (at 3.23Å)	Xtriage
Refinement program	CNS 1.1	Depositor
R, R_{free}	0.228 , 0.276 0.214 , 0.260	Depositor DCC
R_{free} test set	992 reflections (4.81%)	DCC
Wilson B-factor (Å ²)	75.4	Xtriage
Anisotropy	0.304	Xtriage
Bulk solvent k_{sol} (e/Å ³), B_{sol} (Å ²)	0.27 , 66.0	EDS
Estimated twinning fraction	No twinning to report.	Xtriage
L-test for twinning ²	$\langle L \rangle = 0.48$, $\langle L^2 \rangle = 0.31$	Xtriage
Outliers	0 of 20937 reflections	Xtriage
F_o, F_c correlation	0.93	EDS
Total number of atoms	8790	wwPDB-VP
Average B, all atoms (Å ²)	70.0	wwPDB-VP

Xtriage's analysis on translational NCS is as follows: *The largest off-origin peak in the Patterson function is 5.77% of the height of the origin peak. No significant pseudotranslation is detected.*

¹Intensities estimated from amplitudes.

²Theoretical values of $\langle |L| \rangle$, $\langle L^2 \rangle$ for acentric reflections are 0.5, 0.375 respectively for untwinned datasets, and 0.333, 0.2 for perfectly twinned datasets.

5 Model quality [i](#)

5.1 Standard geometry [i](#)

Bond lengths and bond angles in the following residue types are not validated in this section: OPB

The Z score for a bond length (or angle) is the number of standard deviations the observed value is removed from the expected value. A bond length (or angle) with $|Z| > 5$ is considered an outlier worth inspection. RMSZ is the root-mean-square of all Z scores of the bond lengths (or angles).

Mol	Chain	Bond lengths		Bond angles	
		RMSZ	# Z >5	RMSZ	# Z >5
1	A	0.33	0/4461	0.60	2/6055 (0.0%)
1	B	0.32	0/4452	0.59	2/6035 (0.0%)
All	All	0.32	0/8913	0.59	4/12090 (0.0%)

There are no bond length outliers.

All (4) bond angle outliers are listed below:

Mol	Chain	Res	Type	Atoms	Z	Observed(°)	Ideal(°)
1	B	559	CYS	CA-CB-SG	10.66	133.18	114.00
1	B	514	CYS	CA-CB-SG	-9.17	97.49	114.00
1	A	558	CYS	CA-CB-SG	8.13	128.63	114.00
1	A	567	CYS	CA-CB-SG	-5.18	104.67	114.00

There are no chirality outliers.

There are no planarity outliers.

5.2 Too-close contacts [i](#)

In the following table, the Non-H and H(model) columns list the number of non-hydrogen atoms and hydrogen atoms in the chain respectively. The H(added) column lists the number of hydrogen atoms added and optimized by MolProbity. The Clashes column lists the number of clashes within the asymmetric unit, whereas Symm-Clashes lists symmetry related clashes.

Mol	Chain	Non-H	H(model)	H(added)	Clashes	Symm-Clashes
1	A	4374	0	4064	183	0
1	B	4368	0	4075	169	0
2	A	24	0	18	6	0
2	B	24	0	18	5	0
All	All	8790	0	8175	352	0

The all-atom clashscore is defined as the number of clashes found per 1000 atoms (including hydrogen atoms). The all-atom clashscore for this structure is 21.

All (352) close contacts within the same asymmetric unit are listed below, sorted by their clash magnitude.

Atom-1	Atom-2	Interatomic distance (Å)	Clash overlap (Å)
1:A:554:PHE:HB2	1:A:575:LEU:HD22	1.45	0.99
1:B:257:ARG:NH1	1:B:287:SER:HB3	1.82	0.95
1:A:61:ASN:HD22	1:A:64:LYS:HE3	1.34	0.92
1:A:67:HIS:HB3	1:A:98:ARG:HH21	1.38	0.87
1:B:433:VAL:HG22	1:B:452:TYR:CD2	2.12	0.84
1:A:117:ARG:HH12	1:A:182:LEU:HB3	1.43	0.84
1:A:94:GLN:O	1:A:98:ARG:HB3	1.79	0.83
1:A:433:VAL:HG22	1:A:452:TYR:CD2	2.15	0.81
1:A:567:CYS:SG	1:A:568:PHE:N	2.54	0.81
1:A:222:ARG:HH12	2:A:2001:OPB:H13	1.45	0.80
1:B:120:VAL:HG21	1:B:175:ALA:HA	1.64	0.79
1:B:424:VAL:O	1:B:428:ARG:HG3	1.84	0.77
1:A:383:GLU:HB3	1:A:384:PRO:HD3	1.67	0.77
1:B:541:LYS:H	1:B:543:GLN:HG3	1.50	0.75
1:B:556:GLU:O	1:B:560:LYS:HG2	1.86	0.75
1:B:257:ARG:HH12	1:B:287:SER:HB3	1.50	0.74
1:B:194:ALA:HB1	1:B:455:VAL:CG1	2.18	0.74
1:A:367:HIS:O	1:A:371:ALA:HB2	1.88	0.74
1:B:550:ASP:OD1	1:B:575:LEU:HD21	1.89	0.73
1:A:283:LEU:HG	1:A:284:LEU:HD23	1.69	0.73
1:A:554:PHE:CE1	1:A:572:GLY:HA2	2.24	0.72
1:B:240:LYS:HE2	1:B:244:GLU:OE2	1.89	0.72
1:A:540:THR:OG1	1:A:544:LEU:HG	1.90	0.71
1:A:120:VAL:HG21	1:A:175:ALA:HA	1.73	0.71
1:B:553:ALA:HA	1:B:556:GLU:HG2	1.70	0.71
1:A:98:ARG:N	1:A:98:ARG:HH11	1.89	0.70
1:B:378:LYS:HB2	1:B:379:PRO:HD3	1.72	0.70
1:A:394:LEU:HD12	1:A:397:GLN:HE21	1.57	0.70
1:B:408:LEU:HD11	1:B:526:GLN:HB3	1.72	0.70
1:A:433:VAL:HG22	1:A:452:TYR:CE2	2.27	0.70
1:B:160:ARG:HH12	1:B:188:GLU:CD	1.96	0.69
1:A:291:ALA:HB1	2:A:2001:OPB:H11	1.73	0.69
1:A:265:CYS:SG	1:A:286:LYS:HD2	2.33	0.68
1:B:556:GLU:HG3	1:B:557:LYS:N	2.07	0.68
1:B:555:VAL:O	1:B:559:CYS:HB2	1.92	0.68
1:A:483:ASN:O	1:A:486:PRO:HD2	1.94	0.68
1:B:394:LEU:O	1:B:397:GLN:HG2	1.95	0.67

Continued on next page...

Continued from previous page...

Atom-1	Atom-2	Interatomic distance (Å)	Clash overlap (Å)
1:B:34:CYS:HB3	1:B:39:HIS:NE2	2.10	0.67
1:B:151:ALA:HB3	1:B:152:PRO:HD3	1.78	0.66
1:A:373:VAL:HG13	1:A:374:PHE:HD1	1.60	0.66
1:B:106:LYS:HD3	1:B:147:PRO:HB2	1.78	0.65
1:B:219:LEU:HD11	1:B:238:LEU:HD12	1.79	0.65
1:B:400:GLU:O	1:B:404:GLN:HG3	1.96	0.65
1:B:540:THR:HA	1:B:543:GLN:CD	2.17	0.64
1:A:98:ARG:HH11	1:A:98:ARG:H	1.43	0.64
1:A:151:ALA:HB3	1:A:152:PRO:HD3	1.79	0.64
1:A:117:ARG:NH1	1:A:182:LEU:HB3	2.10	0.64
1:B:16:GLU:O	1:B:20:LYS:HG2	1.97	0.63
1:B:575:LEU:HD12	1:B:578:ALA:HB3	1.81	0.63
1:B:383:GLU:HB3	1:B:384:PRO:HD3	1.78	0.63
1:B:52:THR:HA	1:B:56:ASP:OD2	1.98	0.63
1:B:433:VAL:HG22	1:B:452:TYR:CE2	2.34	0.63
1:B:545:LYS:HE3	1:B:549:ASP:OD1	1.99	0.63
1:B:186:ARG:O	1:B:190:LYS:HG3	1.99	0.63
1:A:98:ARG:CZ	1:A:99:ASN:HB2	2.29	0.62
1:A:567:CYS:O	1:A:571:GLU:HB2	1.99	0.62
1:A:433:VAL:HG22	1:A:452:TYR:HD2	1.62	0.62
1:A:98:ARG:NH1	1:A:99:ASN:H	1.97	0.62
1:B:141:GLU:O	1:B:144:ARG:HG2	2.00	0.62
1:B:384:PRO:O	1:B:388:ILE:HG12	1.98	0.62
1:B:530:VAL:HG12	1:B:534:LYS:HD2	1.82	0.62
1:A:558:CYS:SG	1:A:568:PHE:N	2.72	0.61
1:B:521:ARG:NH1	1:B:521:ARG:HB2	2.15	0.61
1:B:485:ARG:HB3	1:B:486:PRO:HD3	1.82	0.61
1:B:39:HIS:O	1:B:43:VAL:HG23	2.01	0.61
1:A:106:LYS:HD3	1:A:147:PRO:HB2	1.82	0.61
1:B:433:VAL:HG22	1:B:452:TYR:HD2	1.60	0.61
1:B:36:PHE:O	1:B:40:VAL:HG23	2.01	0.61
1:A:509:PHE:O	1:A:510:HIS:O	2.19	0.61
1:A:554:PHE:HE1	1:A:572:GLY:HA2	1.65	0.61
1:A:306:ALA:HA	1:A:310:VAL:HG22	1.82	0.61
1:B:520:GLU:O	1:B:524:LYS:HG2	2.01	0.60
1:A:281:LYS:HB2	1:A:282:PRO:HD2	1.83	0.60
1:A:61:ASN:HD22	1:A:64:LYS:CE	2.09	0.60
1:A:567:CYS:O	1:A:571:GLU:N	2.35	0.60
1:A:25:ILE:O	1:A:29:GLN:HG3	2.01	0.60
1:A:430:LEU:O	1:A:433:VAL:HG23	2.02	0.60
1:A:538:LYS:O	1:A:540:THR:HG22	2.01	0.60

Continued on next page...

Continued from previous page...

Atom-1	Atom-2	Interatomic distance (Å)	Clash overlap (Å)
1:A:378:LYS:HB3	1:A:379:PRO:HD3	1.83	0.60
1:A:274:LYS:HD2	1:A:294:GLU:HG3	1.84	0.60
1:A:547:VAL:O	1:A:551:PHE:N	2.35	0.60
1:B:59:ALA:HB3	1:B:62:CYS:SG	2.42	0.59
1:B:120:VAL:HG21	1:B:175:ALA:CA	2.32	0.59
1:A:98:ARG:NH2	1:A:99:ASN:HB2	2.17	0.59
1:B:555:VAL:O	1:B:559:CYS:CB	2.50	0.59
1:A:168:CYS:SG	1:A:177:CYS:C	2.81	0.59
1:A:224:PRO:HB2	1:A:299:PRO:HD3	1.85	0.59
1:A:139:LEU:HD21	1:A:158:ALA:HB2	1.85	0.59
1:A:240:LYS:O	1:A:244:GLU:HG3	2.02	0.59
1:B:554:PHE:O	1:B:558:CYS:HB3	2.03	0.59
1:B:103:LEU:HD11	1:B:247:HIS:CE1	2.38	0.58
1:A:94:GLN:O	1:A:98:ARG:HD3	2.02	0.58
1:B:551:PHE:O	1:B:555:VAL:HG23	2.03	0.58
1:B:50:ALA:O	1:B:54:VAL:HG23	2.04	0.58
1:B:260:LEU:O	1:B:264:ILE:HG13	2.04	0.58
1:A:485:ARG:NH2	1:A:486:PRO:HG3	2.19	0.57
1:B:442:GLU:HA	1:B:445:ARG:HD2	1.86	0.57
1:B:103:LEU:C	1:B:105:HIS:H	2.07	0.57
1:B:323:LYS:HG3	1:B:324:ASP:N	2.17	0.57
1:A:509:PHE:O	1:A:510:HIS:C	2.42	0.57
1:B:507:PHE:CD1	1:B:507:PHE:O	2.57	0.57
1:A:537:PRO:O	1:A:540:THR:CG2	2.52	0.57
1:A:281:LYS:HB2	1:A:282:PRO:CD	2.35	0.57
1:A:319:TYR:CE1	1:A:323:LYS:HB2	2.40	0.57
1:B:98:ARG:O	1:B:101:CYS:HB3	2.04	0.57
1:A:424:VAL:O	1:A:428:ARG:HG3	2.03	0.57
1:B:541:LYS:N	1:B:543:GLN:HG3	2.20	0.57
1:B:483:ASN:O	1:B:486:PRO:HD2	2.05	0.57
1:A:66:LEU:HB3	1:A:70:PHE:CE1	2.40	0.57
1:B:485:ARG:NH2	1:B:486:PRO:HG3	2.18	0.56
1:B:367:HIS:O	1:B:371:ALA:HB2	2.06	0.56
1:A:539:ALA:O	1:A:540:THR:HB	2.05	0.56
1:B:48:GLU:O	1:B:48:GLU:HG2	2.06	0.56
1:A:507:PHE:O	1:A:507:PHE:CD1	2.58	0.56
1:B:283:LEU:HG	1:B:284:LEU:N	2.20	0.56
1:A:87:MET:HE1	1:A:105:HIS:HB3	1.88	0.56
1:A:223:PHE:CD1	1:A:272:SER:HB2	2.41	0.56
1:B:572:GLY:O	1:B:576:VAL:HG23	2.06	0.55
1:B:480:SER:OG	1:B:483:ASN:HB2	2.06	0.55

Continued on next page...

Continued from previous page...

Atom-1	Atom-2	Interatomic distance (Å)	Clash overlap (Å)
1:A:537:PRO:O	1:A:540:THR:HG22	2.07	0.55
1:B:81:ARG:HE	1:B:88:ALA:HB3	1.72	0.55
1:A:67:HIS:CB	1:A:98:ARG:HH21	2.14	0.55
1:B:541:LYS:H	1:B:543:GLN:CG	2.17	0.55
1:A:512:ASP:O	1:A:515:THR:HG22	2.06	0.55
1:B:519:LYS:O	1:B:523:ILE:HG13	2.07	0.55
1:A:485:ARG:HB3	1:A:486:PRO:HD3	1.88	0.55
1:B:483:ASN:C	1:B:486:PRO:HD2	2.26	0.55
1:A:14:LEU:HD13	1:A:22:LEU:HD12	1.89	0.55
1:A:279:CYS:HA	1:A:286:LYS:HD3	1.87	0.54
1:A:179:LEU:HB2	1:A:180:PRO:HD3	1.89	0.54
1:B:25:ILE:O	1:B:29:GLN:HG3	2.07	0.54
1:A:279:CYS:HA	1:A:286:LYS:CD	2.37	0.54
1:A:409:VAL:O	1:A:413:LYS:HG3	2.08	0.54
1:A:66:LEU:O	1:A:70:PHE:HD1	1.91	0.54
1:A:540:THR:OG1	1:A:544:LEU:CG	2.55	0.53
1:B:30:TYR:HE1	1:B:103:LEU:HD23	1.72	0.53
1:A:415:VAL:HG23	1:A:415:VAL:O	2.08	0.53
1:A:437:CYS:HA	1:A:440:HIS:HD2	1.73	0.53
1:A:291:ALA:HB1	2:A:2001:OPB:C11	2.38	0.53
1:A:260:LEU:O	1:A:264:ILE:HG13	2.09	0.53
1:A:404:GLN:HE21	1:A:428:ARG:HA	1.73	0.53
1:A:493:VAL:HG22	1:A:493:VAL:O	2.09	0.53
1:A:252:GLU:N	1:A:252:GLU:OE1	2.37	0.53
1:B:325:VAL:HG12	1:B:329:MET:CE	2.38	0.53
1:B:179:LEU:HB2	1:B:180:PRO:HD3	1.91	0.53
1:A:372:LYS:O	1:A:375:ASP:HB2	2.08	0.52
1:A:66:LEU:HD13	1:A:66:LEU:N	2.23	0.52
1:B:196:GLN:HA	1:B:196:GLN:NE2	2.24	0.52
1:B:150:TYR:HE2	1:B:257:ARG:HH21	1.57	0.52
1:B:464:HIS:CE1	1:B:469:VAL:H	2.27	0.52
1:B:219:LEU:HD11	1:B:238:LEU:CD1	2.40	0.52
1:B:373:VAL:HG13	1:B:374:PHE:HD1	1.74	0.52
1:B:206:PHE:CE2	1:B:481:LEU:HD13	2.44	0.52
1:A:412:THR:O	1:A:416:PRO:HG3	2.09	0.52
1:B:475:LYS:O	1:B:479:GLU:HB2	2.10	0.52
1:A:572:GLY:O	1:A:576:VAL:HG23	2.11	0.51
1:A:492:GLU:HG3	1:A:493:VAL:CG1	2.40	0.51
1:B:290:ILE:HB	2:B:2001:OPB:H213	1.92	0.51
1:A:394:LEU:HD11	1:A:398:LEU:HD11	1.93	0.51
1:B:160:ARG:HD3	1:B:185:LEU:HD21	1.92	0.51

Continued on next page...

Continued from previous page...

Atom-1	Atom-2	Interatomic distance (Å)	Clash overlap (Å)
1:B:81:ARG:NE	1:B:88:ALA:HB3	2.25	0.51
1:B:261:ALA:HB2	2:B:2001:OPB:H211	1.92	0.51
1:B:287:SER:HA	2:B:2001:OPB:H212	1.91	0.51
1:B:323:LYS:HE3	1:B:354:GLU:OE2	2.11	0.51
1:A:323:LYS:HG3	1:A:324:ASP:N	2.26	0.51
1:B:464:HIS:CE1	1:B:470:SER:H	2.29	0.51
1:B:411:TYR:HA	1:B:414:LYS:HD3	1.92	0.51
1:B:100:GLU:O	1:B:104:GLN:HG3	2.11	0.50
1:B:409:VAL:HG11	1:B:544:LEU:HD11	1.93	0.50
1:B:290:ILE:O	1:B:293:VAL:HG12	2.11	0.50
1:A:397:GLN:HG3	1:A:398:LEU:HD23	1.92	0.50
1:A:132:GLU:CG	1:A:136:LYS:HE3	2.40	0.50
1:B:415:VAL:O	1:B:415:VAL:HG23	2.12	0.50
1:A:446:MET:N	1:A:447:PRO:HD2	2.26	0.50
1:A:373:VAL:HG13	1:A:374:PHE:N	2.27	0.50
1:B:67:HIS:HB3	1:B:99:ASN:HD21	1.77	0.50
1:B:51:LYS:C	1:B:53:CYS:H	2.15	0.50
1:A:409:VAL:HG11	1:A:544:LEU:CD1	2.42	0.49
1:A:483:ASN:C	1:A:486:PRO:HD2	2.32	0.49
1:A:411:TYR:HA	1:A:414:LYS:HD3	1.94	0.49
1:B:342:SER:HA	1:B:447:PRO:HA	1.93	0.49
1:A:67:HIS:HB3	1:A:98:ARG:NH2	2.17	0.49
1:A:238:LEU:HD21	2:A:2001:OPB:C17	2.42	0.49
1:B:446:MET:N	1:B:447:PRO:HD2	2.27	0.49
1:A:501:GLU:HA	1:A:501:GLU:OE1	2.12	0.49
1:A:287:SER:HA	2:A:2001:OPB:H212	1.95	0.49
1:B:550:ASP:CG	1:B:575:LEU:HD21	2.32	0.49
1:B:194:ALA:HB1	1:B:455:VAL:HG11	1.93	0.49
1:A:408:LEU:HD22	1:A:530:VAL:CG2	2.43	0.49
1:B:296:ASP:OD1	1:B:297:GLU:N	2.45	0.49
1:A:23:VAL:HG13	1:A:70:PHE:HE2	1.76	0.49
1:B:364:ALA:O	1:B:366:PRO:HD3	2.12	0.49
1:B:14:LEU:HD13	1:B:22:LEU:HD12	1.94	0.49
1:B:578:ALA:O	1:B:581:ALA:HB3	2.13	0.49
1:A:525:LYS:O	1:A:528:ALA:HB3	2.13	0.49
1:A:61:ASN:HB3	1:A:64:LYS:HD2	1.93	0.49
1:A:405:ASN:O	1:A:408:LEU:HB2	2.13	0.49
1:B:435:SER:O	1:B:439:LYS:HE2	2.12	0.49
1:B:537:PRO:HG2	1:B:538:LYS:H	1.77	0.49
1:A:404:GLN:NE2	1:A:428:ARG:HA	2.28	0.48
1:B:366:PRO:O	1:B:369:CYS:N	2.46	0.48

Continued on next page...

Continued from previous page...

Atom-1	Atom-2	Interatomic distance (Å)	Clash overlap (Å)
1:A:97:GLU:C	1:A:99:ASN:N	2.63	0.48
1:B:511:ALA:HA	1:B:568:PHE:CE2	2.48	0.48
1:A:400:GLU:O	1:A:404:GLN:HG3	2.13	0.48
1:B:409:VAL:HG11	1:B:544:LEU:CD1	2.43	0.48
1:B:168:CYS:SG	1:B:177:CYS:C	2.92	0.48
1:A:310:VAL:O	1:A:370:TYR:HE1	1.95	0.48
1:A:214:TRP:CE2	1:A:343:VAL:HG11	2.49	0.48
1:A:97:GLU:C	1:A:99:ASN:H	2.17	0.48
1:B:370:TYR:C	1:B:370:TYR:CD1	2.87	0.48
1:A:42:LEU:O	1:A:46:VAL:HG23	2.14	0.48
1:A:39:HIS:O	1:A:43:VAL:HG23	2.14	0.48
1:A:7:VAL:HG22	1:A:66:LEU:HD12	1.96	0.48
1:B:42:LEU:O	1:B:46:VAL:HG23	2.14	0.48
1:B:310:VAL:O	1:B:370:TYR:HE1	1.97	0.47
1:B:75:CYS:HA	1:B:78:ALA:HB3	1.94	0.47
1:A:542:GLU:C	1:A:544:LEU:H	2.07	0.47
1:A:178:LEU:O	1:A:179:LEU:C	2.52	0.47
1:B:261:ALA:CB	2:B:2001:OPB:H211	2.45	0.47
1:B:556:GLU:HG3	1:B:557:LYS:H	1.78	0.47
1:A:120:VAL:HG21	1:A:175:ALA:CA	2.42	0.47
1:A:508:THR:HG21	1:A:510:HIS:CD2	2.49	0.47
1:B:462:VAL:HG23	1:B:463:LEU:N	2.28	0.47
1:A:153:GLU:O	1:A:157:PHE:HD1	1.96	0.47
1:B:412:THR:O	1:B:416:PRO:HG3	2.14	0.47
1:B:216:VAL:HG22	1:B:235:VAL:HG21	1.96	0.47
1:B:560:LYS:O	1:B:560:LYS:HG3	2.15	0.47
1:A:306:ALA:CA	1:A:310:VAL:HG22	2.44	0.47
1:A:437:CYS:HA	1:A:440:HIS:CD2	2.50	0.47
1:A:507:PHE:HE1	1:A:509:PHE:CZ	2.32	0.47
1:A:34:CYS:HB3	1:A:39:HIS:NE2	2.30	0.47
1:B:456:VAL:O	1:B:459:GLN:HB3	2.14	0.46
1:B:556:GLU:CG	1:B:557:LYS:N	2.78	0.46
1:B:503:ASN:C	1:B:503:ASN:OD1	2.54	0.46
1:A:274:LYS:HE3	1:A:296:ASP:HA	1.97	0.46
1:B:282:PRO:HB2	1:B:285:GLU:OE1	2.16	0.46
1:B:409:VAL:O	1:B:413:LYS:HG3	2.15	0.46
1:B:571:GLU:HA	1:B:571:GLU:OE1	2.16	0.46
1:B:381:VAL:O	1:B:384:PRO:HD2	2.16	0.46
1:B:422:THR:O	1:B:426:VAL:HG23	2.16	0.46
1:B:67:HIS:HB3	1:B:99:ASN:ND2	2.31	0.46
1:A:49:PHE:O	1:A:49:PHE:HD2	1.99	0.46

Continued on next page...

Continued from previous page...

Atom-1	Atom-2	Interatomic distance (Å)	Clash overlap (Å)
1:A:426:VAL:HG21	1:A:460:LEU:HB2	1.98	0.46
1:A:408:LEU:HD11	1:A:526:GLN:HB3	1.97	0.45
1:B:223:PHE:CD1	1:B:272:SER:HB2	2.51	0.45
1:B:257:ARG:HH11	1:B:287:SER:HB3	1.74	0.45
1:B:141:GLU:HA	1:B:141:GLU:OE1	2.16	0.45
1:A:503:ASN:O	1:A:503:ASN:CG	2.55	0.45
1:A:511:ALA:HA	1:A:568:PHE:CE2	2.52	0.45
1:A:38:ASP:O	1:A:42:LEU:HG	2.17	0.45
1:A:420:THR:HG23	1:A:530:VAL:HG11	1.99	0.45
1:A:117:ARG:HH12	1:A:182:LEU:CB	2.21	0.45
1:A:222:ARG:O	1:A:224:PRO:HD3	2.17	0.45
1:A:558:CYS:SG	1:A:568:PHE:CA	3.05	0.45
1:B:139:LEU:HD21	1:B:158:ALA:HB2	1.99	0.45
1:B:287:SER:HA	2:B:2001:OPB:C21	2.46	0.44
1:A:283:LEU:HG	1:A:284:LEU:N	2.32	0.44
1:A:537:PRO:O	1:A:540:THR:HG21	2.17	0.44
1:A:7:VAL:HG21	1:A:69:LEU:CD1	2.47	0.44
1:B:22:LEU:HD21	1:B:155:LEU:HD11	1.98	0.44
1:A:460:LEU:O	1:A:460:LEU:HD12	2.16	0.44
1:A:551:PHE:O	1:A:555:VAL:HG23	2.17	0.44
1:A:34:CYS:HA	1:A:35:PRO:HD3	1.84	0.44
1:B:9:HIS:CD2	1:B:13:ASP:OD2	2.71	0.44
1:B:505:GLU:C	1:B:507:PHE:N	2.69	0.44
1:B:518:GLU:O	1:B:521:ARG:HB3	2.18	0.44
1:A:505:GLU:O	1:A:506:THR:C	2.55	0.44
1:A:420:THR:HB	1:A:421:PRO:HD3	2.00	0.44
1:B:285:GLU:O	1:B:289:CYS:HB2	2.18	0.44
1:B:120:VAL:HG21	1:B:175:ALA:CB	2.48	0.44
1:B:505:GLU:O	1:B:506:THR:C	2.55	0.44
1:A:141:GLU:OE1	1:A:144:ARG:HD3	2.17	0.44
1:B:23:VAL:O	1:B:27:PHE:HD1	2.01	0.44
1:A:409:VAL:HG11	1:A:544:LEU:HD11	2.00	0.43
1:B:521:ARG:HB2	1:B:521:ARG:HH11	1.81	0.43
1:B:553:ALA:CA	1:B:556:GLU:HG2	2.46	0.43
1:B:141:GLU:OE1	1:B:144:ARG:HD3	2.18	0.43
1:A:578:ALA:O	1:A:581:ALA:HB3	2.19	0.43
1:A:345:LEU:O	1:A:349:LEU:HG	2.18	0.43
1:A:282:PRO:HB2	1:A:285:GLU:OE1	2.18	0.43
1:B:81:ARG:HG2	1:B:88:ALA:CB	2.48	0.43
1:A:540:THR:HG1	1:A:544:LEU:HG	1.84	0.43
1:A:480:SER:HB3	1:A:483:ASN:HB2	1.99	0.43

Continued on next page...

Continued from previous page...

Atom-1	Atom-2	Interatomic distance (Å)	Clash overlap (Å)
1:B:70:PHE:N	1:B:70:PHE:CD1	2.87	0.43
1:A:492:GLU:HG3	1:A:493:VAL:HG13	2.00	0.43
1:A:66:LEU:HB3	1:A:70:PHE:CD1	2.52	0.43
1:A:5:SER:HB3	1:A:57:GLU:HG3	2.00	0.43
1:B:525:LYS:O	1:B:528:ALA:HB3	2.18	0.43
1:A:31:LEU:HG	1:A:74:LEU:HD22	1.99	0.43
1:B:511:ALA:C	1:B:513:ILE:H	2.22	0.43
1:B:516:LEU:O	1:B:521:ARG:NH2	2.47	0.43
1:B:196:GLN:HA	1:B:196:GLN:HE21	1.84	0.42
1:A:49:PHE:CE2	1:A:53:CYS:SG	3.12	0.42
1:A:417:GLN:H	1:A:417:GLN:CD	2.23	0.42
1:A:325:VAL:HG12	1:A:329:MET:HE2	2.01	0.42
1:A:290:ILE:HB	2:A:2001:OPB:H213	2.00	0.42
1:A:100:GLU:OE1	1:A:100:GLU:HA	2.19	0.42
1:B:565:GLU:HG3	1:B:565:GLU:O	2.18	0.42
1:A:558:CYS:SG	1:A:568:PHE:HA	2.59	0.42
1:A:222:ARG:C	1:A:224:PRO:HD3	2.40	0.42
1:A:502:PHE:CE1	1:A:507:PHE:CE2	3.07	0.42
1:B:54:VAL:HG12	1:B:55:ALA:N	2.34	0.42
1:A:370:TYR:CD1	1:A:370:TYR:C	2.93	0.42
1:B:103:LEU:C	1:B:105:HIS:N	2.73	0.42
1:B:370:TYR:O	1:B:370:TYR:HD1	2.03	0.42
1:B:32:GLN:NE2	1:B:110:PRO:HG3	2.35	0.42
1:A:384:PRO:O	1:A:388:ILE:HG12	2.20	0.42
1:A:538:LYS:O	1:A:540:THR:N	2.53	0.42
1:A:49:PHE:CD2	1:A:49:PHE:C	2.92	0.42
1:A:199:LYS:HG2	1:A:211:PHE:HE1	1.84	0.42
1:B:333:GLU:O	1:B:336:ARG:HG2	2.20	0.42
1:A:179:LEU:CB	1:A:180:PRO:HD3	2.50	0.42
1:A:503:ASN:O	1:A:503:ASN:ND2	2.53	0.42
1:B:178:LEU:O	1:B:179:LEU:C	2.58	0.41
1:A:257:ARG:NH1	1:A:287:SER:HB3	2.35	0.41
1:A:87:MET:CE	1:A:105:HIS:HB3	2.50	0.41
1:A:408:LEU:CD1	1:A:526:GLN:HG2	2.49	0.41
1:B:567:CYS:O	1:B:571:GLU:HB2	2.21	0.41
1:A:519:LYS:O	1:A:523:ILE:HG13	2.20	0.41
1:B:52:THR:O	1:B:56:ASP:HB2	2.20	0.41
1:B:81:ARG:HG2	1:B:88:ALA:HB3	2.02	0.41
1:A:462:VAL:HG23	1:A:463:LEU:N	2.36	0.41
1:A:381:VAL:O	1:A:384:PRO:HD2	2.21	0.41
1:A:383:GLU:HB3	1:A:384:PRO:CD	2.46	0.41

Continued on next page...

Continued from previous page...

Atom-1	Atom-2	Interatomic distance (Å)	Clash overlap (Å)
1:B:160:ARG:CD	1:B:185:LEU:HD21	2.49	0.41
1:A:141:GLU:OE1	1:A:141:GLU:HA	2.21	0.41
1:A:314:ASP:O	1:A:315:VAL:C	2.59	0.41
1:B:298:MET:O	1:B:299:PRO:C	2.59	0.41
1:B:29:GLN:HG2	1:B:143:ALA:O	2.21	0.41
1:B:310:VAL:HG21	1:B:374:PHE:CE1	2.55	0.41
1:A:38:ASP:OD1	1:A:38:ASP:N	2.54	0.41
1:A:67:HIS:CE1	1:A:99:ASN:ND2	2.89	0.41
1:B:81:ARG:HE	1:B:88:ALA:CB	2.31	0.41
1:A:414:LYS:O	1:A:472:ARG:NH1	2.54	0.41
1:B:15:GLY:O	1:B:19:PHE:HB3	2.20	0.41
1:A:456:VAL:O	1:A:459:GLN:HB3	2.21	0.41
1:B:441:PRO:C	1:B:443:ALA:N	2.74	0.41
1:B:420:THR:O	1:B:424:VAL:HG23	2.21	0.41
1:B:51:LYS:C	1:B:53:CYS:N	2.74	0.41
1:B:482:VAL:HG12	1:B:482:VAL:O	2.21	0.41
1:A:135:LEU:HD11	1:A:162:LYS:HD3	2.02	0.41
1:B:394:LEU:HD11	1:B:398:LEU:HD11	2.04	0.40
1:A:325:VAL:HG12	1:A:329:MET:CE	2.51	0.40
1:A:420:THR:HG23	1:A:530:VAL:CG1	2.51	0.40
1:B:430:LEU:HG	1:B:456:VAL:HG11	2.04	0.40
1:B:566:THR:O	1:B:570:GLU:N	2.54	0.40
1:B:502:PHE:CE1	1:B:507:PHE:HE2	2.39	0.40
1:A:404:GLN:HE21	1:A:428:ARG:CA	2.34	0.40
1:B:70:PHE:HD1	1:B:70:PHE:N	2.18	0.40
1:A:115:LEU:HD22	1:A:145:ARG:NH1	2.36	0.40
1:A:98:ARG:NH1	1:A:99:ASN:N	2.65	0.40
1:A:135:LEU:HD11	1:A:162:LYS:CD	2.52	0.40

There are no symmetry-related clashes.

5.3 Torsion angles [i](#)

5.3.1 Protein backbone [i](#)

In the following table, the Percentiles column shows the percent Ramachandran outliers of the chain as a percentile score with respect to all X-ray entries followed by that with respect to entries of similar resolution.

The Analysed column shows the number of residues for which the backbone conformation was analysed, and the total number of residues.

Mol	Chain	Analysed	Favoured	Allowed	Outliers	Percentiles	
1	A	576/585 (98%)	504 (88%)	58 (10%)	14 (2%)	7	43
1	B	576/585 (98%)	495 (86%)	67 (12%)	14 (2%)	7	43
All	All	1152/1170 (98%)	999 (87%)	125 (11%)	28 (2%)	7	43

All (28) Ramachandran outliers are listed below:

Mol	Chain	Res	Type
1	A	59	ALA
1	A	300	ALA
1	A	315	VAL
1	A	504	ALA
1	A	510	HIS
1	B	54	VAL
1	B	57	GLU
1	B	60	GLU
1	B	300	ALA
1	A	539	ALA
1	B	58	SER
1	B	85	GLY
1	B	565	GLU
1	A	58	SER
1	A	505	GLU
1	A	540	THR
1	A	565	GLU
1	B	104	GLN
1	B	537	PRO
1	A	283	LEU
1	A	541	LYS
1	B	114	ARG
1	B	77	VAL
1	A	179	LEU
1	B	150	TYR
1	B	276	LYS
1	A	180	PRO
1	B	118	PRO

5.3.2 Protein sidechains ⓘ

In the following table, the Percentiles column shows the percent sidechain outliers of the chain as a percentile score with respect to all X-ray entries followed by that with respect to entries of similar resolution.

The Analysed column shows the number of residues for which the sidechain conformation was analysed, and the total number of residues.

Mol	Chain	Analysed	Rotameric	Outliers	Percentiles	
1	A	451/511 (88%)	428 (95%)	23 (5%)	29	70
1	B	450/511 (88%)	424 (94%)	26 (6%)	25	66
All	All	901/1022 (88%)	852 (95%)	49 (5%)	27	68

All (49) residues with a non-rotameric sidechain are listed below:

Mol	Chain	Res	Type
1	A	37	GLU
1	A	49	PHE
1	A	66	LEU
1	A	72	ASP
1	A	79	THR
1	A	98	ARG
1	A	109	ASN
1	A	179	LEU
1	A	236	THR
1	A	245	CYS
1	A	252	GLU
1	A	268	GLN
1	A	281	LYS
1	A	334	TYR
1	A	375	ASP
1	A	435	SER
1	A	467	THR
1	A	471	ASP
1	A	493	VAL
1	A	500	LYS
1	A	503	ASN
1	A	558	CYS
1	A	568	PHE
1	B	38	ASP
1	B	56	ASP
1	B	79	THR
1	B	105	HIS
1	B	179	LEU
1	B	204	GLN
1	B	212	LYS
1	B	245	CYS
1	B	283	LEU
1	B	292	GLU

Continued on next page...

Continued from previous page...

Mol	Chain	Res	Type
1	B	323	LYS
1	B	324	ASP
1	B	334	TYR
1	B	344	VAL
1	B	375	ASP
1	B	435	SER
1	B	439	LYS
1	B	480	SER
1	B	540	THR
1	B	541	LYS
1	B	543	GLN
1	B	550	ASP
1	B	558	CYS
1	B	566	THR
1	B	568	PHE
1	B	575	LEU

Some sidechains can be flipped to improve hydrogen bonding and reduce clashes. All (19) such sidechains are listed below:

Mol	Chain	Res	Type
1	A	61	ASN
1	A	67	HIS
1	A	99	ASN
1	A	109	ASN
1	A	196	GLN
1	A	247	HIS
1	A	385	GLN
1	A	397	GLN
1	A	404	GLN
1	A	440	HIS
1	A	464	HIS
1	A	483	ASN
1	A	510	HIS
1	B	99	ASN
1	B	196	GLN
1	B	318	ASN
1	B	385	GLN
1	B	464	HIS
1	B	483	ASN

5.3.3 RNA ⓘ

There are no RNA molecules in this entry.

5.4 Non-standard residues in protein, DNA, RNA chains ⓘ

There are no non-standard protein/DNA/RNA residues in this entry.

5.5 Carbohydrates ⓘ

There are no carbohydrates in this entry.

5.6 Ligand geometry ⓘ

2 ligands are modelled in this entry.

In the following table, the Counts columns list the number of bonds (or angles) for which Mogul statistics could be retrieved, the number of bonds (or angles) that are observed in the model and the number of bonds (or angles) that are defined in the chemical component dictionary. The Link column lists molecule types, if any, to which the group is linked. The Z score for a bond length (or angle) is the number of standard deviations the observed value is removed from the expected value. A bond length (or angle) with $|Z| > 2$ is considered an outlier worth inspection. RMSZ is the root-mean-square of all Z scores of the bond lengths (or angles).

Mol	Type	Chain	Res	Link	Bond lengths			Bond angles		
					Counts	RMSZ	$\# Z > 2$	Counts	RMSZ	$\# Z > 2$
2	OPB	A	2001	-	24,26,26	2.00	7 (29%)	25,36,36	0.98	2 (8%)
2	OPB	B	2001	-	24,26,26	1.95	9 (37%)	25,36,36	0.95	1 (4%)

In the following table, the Chirals column lists the number of chiral outliers, the number of chiral centers analysed, the number of these observed in the model and the number defined in the chemical component dictionary. Similar counts are reported in the Torsion and Rings columns. '-' means no outliers of that kind were identified.

Mol	Type	Chain	Res	Link	Chirals	Torsions	Rings
2	OPB	A	2001	-	1/1/5/5	0/12/32/32	0/3/3/3
2	OPB	B	2001	-	1/1/5/5	0/12/32/32	0/3/3/3

All (16) bond length outliers are listed below:

Mol	Chain	Res	Type	Atoms	Z	Observed(Å)	Ideal(Å)
2	A	2001	OPB	C4-C5	-2.58	1.47	1.52

Continued on next page...

Continued from previous page...

Mol	Chain	Res	Type	Atoms	Z	Observed(Å)	Ideal(Å)
2	B	2001	OPB	O3-C3	-2.45	1.18	1.22
2	B	2001	OPB	C4-C5	-2.30	1.47	1.52
2	B	2001	OPB	C12-N2	2.08	1.46	1.43
2	B	2001	OPB	C16-C17	2.23	1.43	1.38
2	A	2001	OPB	C12-N2	2.25	1.46	1.43
2	B	2001	OPB	C18-C4	2.59	1.59	1.54
2	A	2001	OPB	C13-C12	2.63	1.44	1.39
2	A	2001	OPB	C16-C17	2.70	1.44	1.38
2	B	2001	OPB	C13-C12	2.80	1.44	1.39
2	B	2001	OPB	C11-C10	3.19	1.44	1.38
2	A	2001	OPB	C11-C6	3.22	1.45	1.39
2	A	2001	OPB	C7-C8	3.51	1.45	1.38
2	B	2001	OPB	C7-C6	3.55	1.46	1.39
2	B	2001	OPB	N1-N2	3.65	1.48	1.42
2	A	2001	OPB	N1-N2	4.29	1.49	1.42

All (3) bond angle outliers are listed below:

Mol	Chain	Res	Type	Atoms	Z	Observed(°)	Ideal(°)
2	A	2001	OPB	C8-C7-C6	2.05	123.01	120.36
2	A	2001	OPB	C11-C10-C9	2.14	122.35	119.87
2	B	2001	OPB	C10-C11-C6	2.18	123.18	120.36

All (2) chirality outliers are listed below:

Mol	Chain	Res	Type	Atom
2	B	2001	OPB	C4
2	A	2001	OPB	C4

There are no torsion outliers.

There are no ring outliers.

2 monomers are involved in 11 short contacts:

Mol	Chain	Res	Type	Clashes	Symm-Clashes
2	A	2001	OPB	6	0
2	B	2001	OPB	5	0

5.7 Other polymers

There are no such residues in this entry.

5.8 Polymer linkage issues

There are no chain breaks in this entry.

6 Fit of model and data ⓘ

6.1 Protein, DNA and RNA chains ⓘ

In the following table, the column labelled ‘#RSRZ> 2’ contains the number (and percentage) of RSRZ outliers, followed by percent RSRZ outliers for the chain as percentile scores relative to all X-ray entries and entries of similar resolution. The OWAB column contains the minimum, median, 95th percentile and maximum values of the occupancy-weighted average B-factor per residue. The column labelled ‘Q< 0.9’ lists the number of (and percentage) of residues with an average occupancy less than 0.9.

Mol	Chain	Analysed	<RSRZ>	#RSRZ>2	OWAB(Å ²)	Q<0.9
1	A	578/585 (98%)	-0.39	9 (1%) 74 62	28, 65, 134, 150	0
1	B	578/585 (98%)	-0.34	12 (2%) 67 52	25, 67, 140, 153	0
All	All	1156/1170 (98%)	-0.37	21 (1%) 71 58	25, 66, 137, 153	0

All (21) RSRZ outliers are listed below:

Mol	Chain	Res	Type	RSRZ
1	B	508	THR	4.7
1	B	562	ASP	4.6
1	A	578	ALA	4.6
1	A	510	HIS	4.3
1	B	509	PHE	4.1
1	A	506	THR	4.1
1	B	539	ALA	3.6
1	B	569	ALA	3.3
1	A	539	ALA	2.9
1	B	83	THR	2.9
1	A	172	ALA	2.6
1	A	570	GLU	2.6
1	B	82	GLU	2.6
1	A	562	ASP	2.5
1	B	171	ALA	2.5
1	B	55	ALA	2.4
1	B	505	GLU	2.4
1	B	566	THR	2.4
1	A	505	GLU	2.3
1	B	578	ALA	2.1
1	A	79	THR	2.0

6.2 Non-standard residues in protein, DNA, RNA chains [i](#)

There are no non-standard protein/DNA/RNA residues in this entry.

6.3 Carbohydrates [i](#)

There are no carbohydrates in this entry.

6.4 Ligands [i](#)

In the following table, the Atoms column lists the number of modelled atoms in the group and the number defined in the chemical component dictionary. LLDF column lists the quality of electron density of the group with respect to its neighbouring residues in protein, DNA or RNA chains. The B-factors column lists the minimum, median, 95th percentile and maximum values of B factors of atoms in the group. The column labelled 'Q< 0.9' lists the number of atoms with occupancy less than 0.9.

Mol	Type	Chain	Res	Atoms	RSCC	RSR	LLDF	B-factors(\AA^2)	Q<0.9
2	OPB	B	2001	24/24	0.90	0.26	1.76	79,82,88,92	0
2	OPB	A	2001	24/24	0.92	0.25	1.51	73,77,83,86	0

6.5 Other polymers [i](#)

There are no such residues in this entry.