



# Full wwPDB X-ray Structure Validation Report ⓘ

Feb 1, 2016 – 07:44 AM GMT

PDB ID : 3C0H  
Title : CASK CaM-Kinase Domain- AMPPNP complex, P1 form  
Authors : Wahl, M.C.  
Deposited on : 2008-01-20  
Resolution : 2.30 Å(reported)

This is a Full wwPDB X-ray Structure Validation Report for a publicly released PDB entry.  
We welcome your comments at [validation@mail.wwpdb.org](mailto:validation@mail.wwpdb.org)  
A user guide is available at  
<http://wwpdb.org/validation/2016/XrayValidationReportHelp>  
with specific help available everywhere you see the ⓘ symbol.

---

The following versions of software and data (see [references ⓘ](#)) were used in the production of this report:

MolProbity : 4.02b-467  
Mogul : 1.7 (RC4), CSD as536be (2015)  
Xtriage (Phenix) : 1.9-1692  
EDS : rb-20026688  
Percentile statistics : 20151230.v01 (using entries in the PDB archive December 30th 2015)  
Refmac : 5.8.0135  
CCP4 : 6.5.0  
Ideal geometry (proteins) : Engh & Huber (2001)  
Ideal geometry (DNA, RNA) : Parkinson et al. (1996)  
Validation Pipeline (wwPDB-VP) : trunk26865

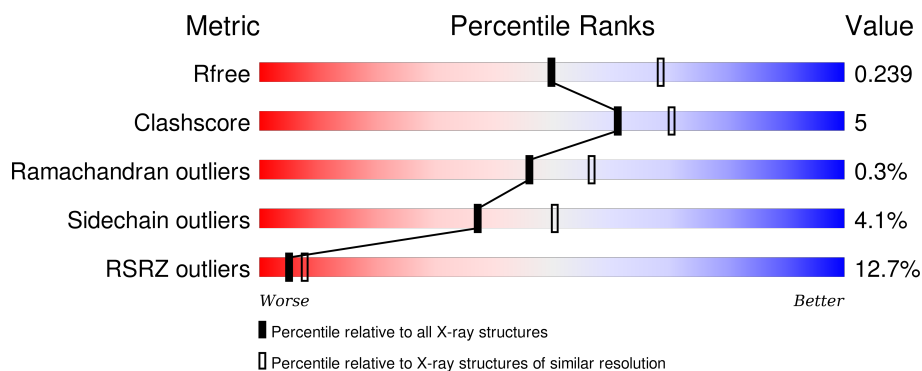
# 1 Overall quality at a glance

The following experimental techniques were used to determine the structure:

## *X-RAY DIFFRACTION*

The reported resolution of this entry is 2.30 Å.

Percentile scores (ranging between 0-100) for global validation metrics of the entry are shown in the following graphic. The table shows the number of entries on which the scores are based.



Metric	Whole archive (#Entries)	Similar resolution (#Entries, resolution range(Å))
$R_{free}$	91344	3852 (2.30-2.30)
Clashscore	102246	4452 (2.30-2.30)
Ramachandran outliers	100387	4410 (2.30-2.30)
Sidechain outliers	100360	4409 (2.30-2.30)
RSRZ outliers	91569	3857 (2.30-2.30)

The table below summarises the geometric issues observed across the polymeric chains and their fit to the electron density. The red, orange, yellow and green segments on the lower bar indicate the fraction of residues that contain outliers for  $\geq 3$ , 2, 1 and 0 types of geometric quality criteria. A grey segment represents the fraction of residues that are not modelled. The numeric value for each fraction is indicated below the corresponding segment, with a dot representing fractions  $\leq 5\%$ . The upper red bar (where present) indicates the fraction of residues that have poor fit to the electron density. The numeric value is given above the bar.

Mol	Chain	Length	Quality of chain
1	A	351	<div> <div>11%</div> <div> <div></div> <div>73%</div> <div>12%</div> <div>•</div> <div>15%</div> </div> </div>
1	B	351	<div> <div>11%</div> <div> <div></div> <div>74%</div> <div>11%</div> <div>•</div> <div>15%</div> </div> </div>

## 2 Entry composition

There are 3 unique types of molecules in this entry. The entry contains 5100 atoms, of which 0 are hydrogens and 0 are deuteriums.

In the tables below, the ZeroOcc column contains the number of atoms modelled with zero occupancy, the AltConf column contains the number of residues with at least one atom in alternate conformation and the Trace column contains the number of residues modelled with at most 2 atoms.

- Molecule 1 is a protein called Peripheral plasma membrane protein CASK.

Mol	Chain	Residues	Atoms					ZeroOcc	AltConf	Trace
1	A	300	Total	C	N	O	S	0	0	0
			2398	1538	418	425	17			
1	B	300	Total	C	N	O	S	0	0	0
			2398	1538	418	425	17			

There are 28 discrepancies between the modelled and reference sequences:

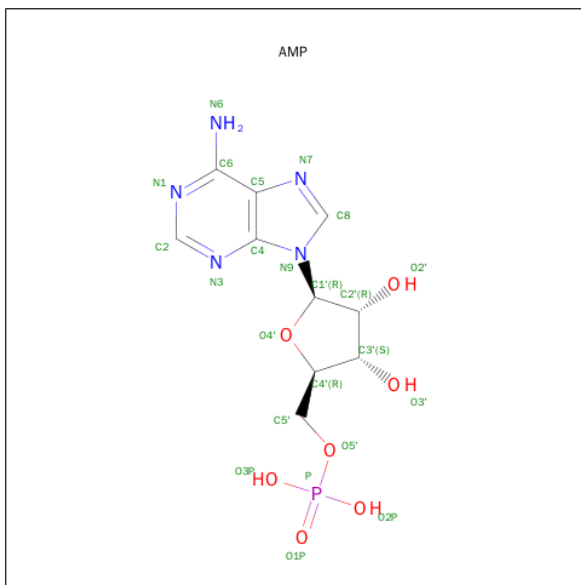
Chain	Residue	Modelled	Actual	Comment	Reference
A	-13	GLY	-	EXPRESSION TAG	UNP O14936
A	-12	SER	-	EXPRESSION TAG	UNP O14936
A	-11	PRO	-	EXPRESSION TAG	UNP O14936
A	-10	GLY	-	EXPRESSION TAG	UNP O14936
A	-9	ILE	-	EXPRESSION TAG	UNP O14936
A	-8	SER	-	EXPRESSION TAG	UNP O14936
A	-7	GLY	-	EXPRESSION TAG	UNP O14936
A	-6	GLY	-	EXPRESSION TAG	UNP O14936
A	-5	GLY	-	EXPRESSION TAG	UNP O14936
A	-4	GLY	-	EXPRESSION TAG	UNP O14936
A	-3	GLY	-	EXPRESSION TAG	UNP O14936
A	-2	ILE	-	EXPRESSION TAG	UNP O14936
A	-1	LEU	-	EXPRESSION TAG	UNP O14936
A	0	ASP	-	EXPRESSION TAG	UNP O14936
B	-13	GLY	-	EXPRESSION TAG	UNP O14936
B	-12	SER	-	EXPRESSION TAG	UNP O14936
B	-11	PRO	-	EXPRESSION TAG	UNP O14936
B	-10	GLY	-	EXPRESSION TAG	UNP O14936
B	-9	ILE	-	EXPRESSION TAG	UNP O14936
B	-8	SER	-	EXPRESSION TAG	UNP O14936
B	-7	GLY	-	EXPRESSION TAG	UNP O14936
B	-6	GLY	-	EXPRESSION TAG	UNP O14936
B	-5	GLY	-	EXPRESSION TAG	UNP O14936
B	-4	GLY	-	EXPRESSION TAG	UNP O14936
B	-3	GLY	-	EXPRESSION TAG	UNP O14936

*Continued on next page...*

Continued from previous page...

Chain	Residue	Modelled	Actual	Comment	Reference
B	-2	ILE	-	EXPRESSION TAG	UNP O14936
B	-1	LEU	-	EXPRESSION TAG	UNP O14936
B	0	ASP	-	EXPRESSION TAG	UNP O14936

- Molecule 2 is ADENOSINE MONOPHOSPHATE (three-letter code: AMP) (formula:  $C_{10}H_{14}N_5O_7P$ ).



Mol	Chain	Residues	Atoms					ZeroOcc	AltConf
2	A	1	Total	C	N	O	P	0	0
			23	10	5	7	1		
2	B	1	Total	C	N	O	P	0	0
			23	10	5	7	1		

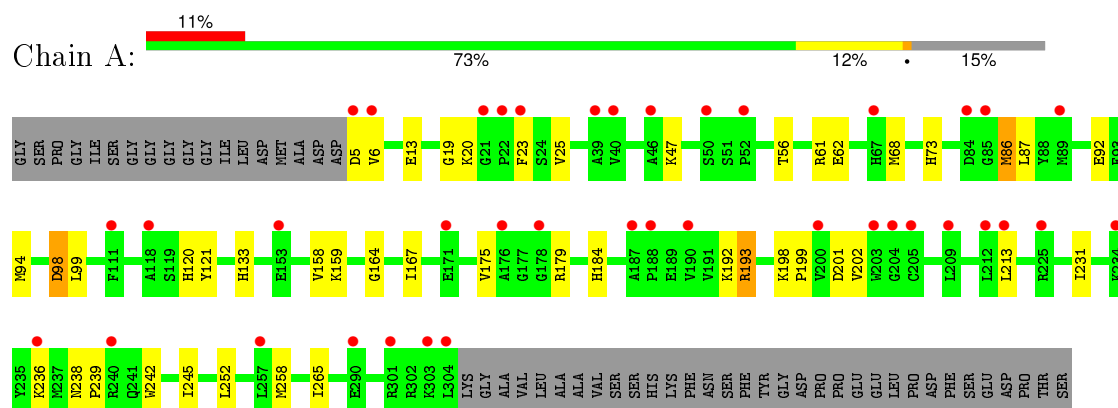
- Molecule 3 is water.

Mol	Chain	Residues	Atoms		ZeroOcc	AltConf
3	A	129	Total	O	0	0
			129	129		
3	B	129	Total	O	0	0
			129	129		

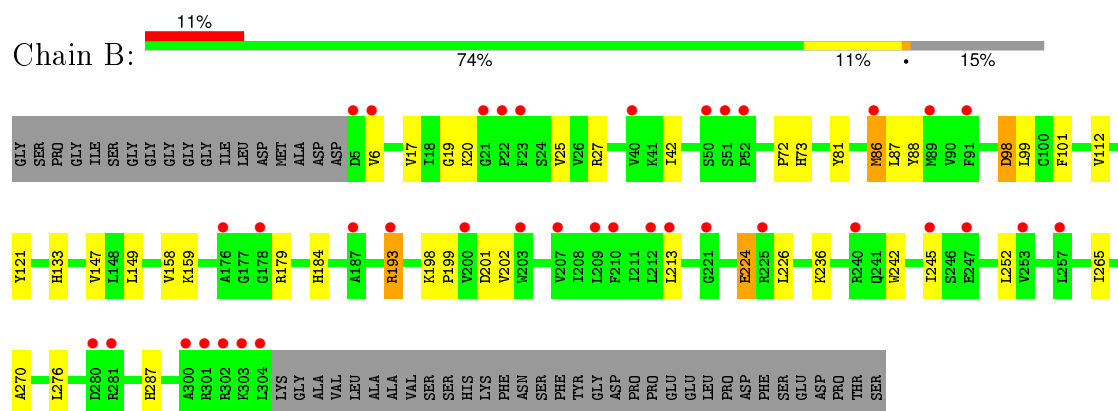
### 3 Residue-property plots [i](#)

These plots are drawn for all protein, RNA and DNA chains in the entry. The first graphic for a chain summarises the proportions of errors displayed in the second graphic. The second graphic shows the sequence view annotated by issues in geometry and electron density. Residues are color-coded according to the number of geometric quality criteria for which they contain at least one outlier: green = 0, yellow = 1, orange = 2 and red = 3 or more. A red dot above a residue indicates a poor fit to the electron density ( $RSRZ > 2$ ). Stretches of 2 or more consecutive residues without any outlier are shown as a green connector. Residues present in the sample, but not in the model, are shown in grey.

- Molecule 1: Peripheral plasma membrane protein CASK



- Molecule 1: Peripheral plasma membrane protein CASK



## 4 Data and refinement statistics

Property	Value	Source
Space group	P 1	Depositor
Cell constants a, b, c, $\alpha$ , $\beta$ , $\gamma$	55.39Å 59.67Å 61.09Å 90.00° 105.57° 105.63°	Depositor
Resolution (Å)	30.00 – 2.30 19.99 – 2.30	Depositor EDS
% Data completeness (in resolution range)	91.5 (30.00-2.30) 90.0 (19.99-2.30)	Depositor EDS
$R_{merge}$	(Not available)	Depositor
$R_{sym}$	0.11	Depositor
$\langle I/\sigma(I) \rangle$ <sup>1</sup>	1.74 (at 2.30Å)	Xtriage
Refinement program	REFMAC 5.2.0005	Depositor
R, $R_{free}$	0.188 , 0.239 0.187 , 0.239	Depositor DCC
$R_{free}$ test set	1556 reflections (5.57%)	DCC
Wilson B-factor (Å <sup>2</sup> )	41.5	Xtriage
Anisotropy	0.401	Xtriage
Bulk solvent $k_{sol}$ (e/Å <sup>3</sup> ), $B_{sol}$ (Å <sup>2</sup> )	0.33 , 52.2	EDS
Estimated twinning fraction	0.011 for -h,-l,-k	Xtriage
L-test for twinning <sup>2</sup>	$\langle  L  \rangle = 0.50$ , $\langle L^2 \rangle = 0.33$	Xtriage
Outliers	0 of 31341 reflections	Xtriage
$F_o, F_c$ correlation	0.95	EDS
Total number of atoms	5100	wwPDB-VP
Average B, all atoms (Å <sup>2</sup> )	51.0	wwPDB-VP

Xtriage's analysis on translational NCS is as follows: *The largest off-origin peak in the Patterson function is 7.23% of the height of the origin peak. No significant pseudotranslation is detected.*

<sup>1</sup>Intensities estimated from amplitudes.

<sup>2</sup>Theoretical values of  $\langle |L| \rangle$ ,  $\langle L^2 \rangle$  for acentric reflections are 0.5, 0.375 respectively for untwinned datasets, and 0.333, 0.2 for perfectly twinned datasets.

## 5 Model quality [i](#)

### 5.1 Standard geometry [i](#)

Bond lengths and bond angles in the following residue types are not validated in this section: AMP

The Z score for a bond length (or angle) is the number of standard deviations the observed value is removed from the expected value. A bond length (or angle) with  $|Z| > 5$  is considered an outlier worth inspection. RMSZ is the root-mean-square of all Z scores of the bond lengths (or angles).

Mol	Chain	Bond lengths		Bond angles	
		RMSZ	$\# Z  > 5$	RMSZ	$\# Z  > 5$
1	A	0.40	0/2454	0.54	0/3311
1	B	0.44	1/2454 (0.0%)	0.56	1/3311 (0.0%)
All	All	0.42	1/4908 (0.0%)	0.55	1/6622 (0.0%)

All (1) bond length outliers are listed below:

Mol	Chain	Res	Type	Atoms	Z	Observed(Å)	Ideal(Å)
1	B	224	GLU	CD-OE1	7.24	1.33	1.25

All (1) bond angle outliers are listed below:

Mol	Chain	Res	Type	Atoms	Z	Observed(°)	Ideal(°)
1	B	226	LEU	CA-CB-CG	6.01	129.13	115.30

There are no chirality outliers.

There are no planarity outliers.

### 5.2 Too-close contacts [i](#)

In the following table, the Non-H and H(model) columns list the number of non-hydrogen atoms and hydrogen atoms in the chain respectively. The H(added) column lists the number of hydrogen atoms added and optimized by MolProbity. The Clashes column lists the number of clashes within the asymmetric unit, whereas Symm-Clashes lists symmetry related clashes.

Mol	Chain	Non-H	H(model)	H(added)	Clashes	Symm-Clashes
1	A	2398	0	2415	28	0
1	B	2398	0	2415	25	0
2	A	23	0	12	1	0
2	B	23	0	12	1	0

*Continued on next page...*

*Continued from previous page...*

Mol	Chain	Non-H	H(model)	H(added)	Clashes	Symm-Clashes
3	A	129	0	0	5	0
3	B	129	0	0	3	0
All	All	5100	0	4854	53	0

The all-atom clashscore is defined as the number of clashes found per 1000 atoms (including hydrogen atoms). The all-atom clashscore for this structure is 5.

All (53) close contacts within the same asymmetric unit are listed below, sorted by their clash magnitude.

Atom-1	Atom-2	Interatomic distance (Å)	Clash overlap (Å)
1:A:193:ARG:HG3	1:A:193:ARG:HH21	1.14	1.10
1:B:193:ARG:HH21	1:B:193:ARG:HG3	1.23	1.00
1:A:193:ARG:CG	1:A:193:ARG:HH21	1.87	0.87
1:A:238:ASN:HB3	3:A:442:HOH:O	1.86	0.76
1:A:193:ARG:HG3	1:A:193:ARG:NH2	1.90	0.74
1:B:193:ARG:HG3	1:B:193:ARG:NH2	1.99	0.69
1:A:184:HIS:HD2	3:A:447:HOH:O	1.77	0.68
1:A:86:MET:HG2	3:A:428:HOH:O	1.97	0.65
1:A:179:ARG:NE	1:A:193:ARG:HH22	1.94	0.64
1:B:19:GLY:HA3	2:B:338:AMP:H4'	1.81	0.61
1:A:167:ILE:HD12	1:A:175:VAL:HG11	1.86	0.58
1:B:86:MET:HG2	3:B:423:HOH:O	2.04	0.58
1:A:61:ARG:HD2	1:A:167:ILE:HG22	1.87	0.57
1:B:213:LEU:O	1:B:245:ILE:HD11	2.04	0.56
1:A:193:ARG:CG	1:A:193:ARG:NH2	2.58	0.55
1:A:202:VAL:HG11	1:A:265:ILE:O	2.07	0.55
1:A:120:HIS:HD2	3:A:358:HOH:O	1.89	0.54
1:A:20:LYS:HG2	1:A:25:VAL:HG22	1.90	0.54
1:B:20:LYS:HG2	1:B:25:VAL:HG22	1.89	0.54
1:B:179:ARG:NE	1:B:193:ARG:HH22	2.07	0.52
1:A:192:LYS:HE3	1:A:231:ILE:HG23	1.92	0.52
1:A:133:HIS:HD2	3:A:349:HOH:O	1.92	0.52
1:B:73:HIS:HA	1:B:159:LYS:HG2	1.92	0.51
1:A:73:HIS:HA	1:A:159:LYS:HG2	1.91	0.51
1:B:99:LEU:HD11	1:B:121:TYR:CD1	2.46	0.50
1:A:242:TRP:HA	1:A:245:ILE:HD12	1.94	0.48
1:B:81:TYR:HB2	1:B:88:TYR:HB2	1.96	0.48
1:A:213:LEU:O	1:A:245:ILE:HD11	2.14	0.47
1:A:23:PHE:HD2	1:A:47:LYS:HG2	1.79	0.47
1:B:17:VAL:HA	1:B:27:ARG:HB3	1.97	0.47
1:A:198:LYS:N	1:A:199:PRO:CD	2.78	0.47

*Continued on next page...*



Continued from previous page...

Atom-1	Atom-2	Interatomic distance (Å)	Clash overlap (Å)
1:A:167:ILE:CD1	1:A:175:VAL:HG11	2.45	0.46
1:B:184:HIS:HD2	3:B:424:HOH:O	1.98	0.46
1:A:133:HIS:HE1	1:A:201:ASP:OD2	2.00	0.45
1:B:72:PRO:O	1:B:159:LYS:HE2	2.17	0.44
1:B:112:VAL:HG13	1:B:287:HIS:HB2	1.99	0.44
1:B:184:HIS:CD2	3:B:424:HOH:O	2.69	0.44
1:A:62:GLU:HG3	1:A:164:GLY:HA2	2.00	0.44
1:A:19:GLY:HA3	2:A:338:AMP:H4'	1.99	0.44
1:B:99:LEU:HD22	1:B:147:VAL:HG11	2.00	0.43
1:B:98:ASP:OD2	1:B:101:PHE:HD2	2.01	0.43
1:B:198:LYS:N	1:B:199:PRO:CD	2.82	0.43
1:B:193:ARG:CG	1:B:193:ARG:NH2	2.72	0.43
1:B:202:VAL:HG11	1:B:265:ILE:O	2.19	0.43
1:A:92:GLU:HG3	1:A:94:MET:CE	2.49	0.43
1:A:98:ASP:C	1:A:98:ASP:OD2	2.58	0.42
1:A:238:ASN:HA	1:A:239:PRO:HD3	1.82	0.42
1:B:242:TRP:HA	1:B:245:ILE:HD12	2.02	0.42
1:B:270:ALA:O	1:B:276:LEU:HD12	2.20	0.42
1:B:179:ARG:CZ	1:B:193:ARG:HH22	2.33	0.41
1:B:42:ILE:HG22	1:B:86:MET:HG3	2.02	0.41
1:A:99:LEU:HD11	1:A:121:TYR:CD1	2.56	0.41
1:B:133:HIS:HE1	1:B:201:ASP:OD2	2.03	0.41

There are no symmetry-related clashes.

## 5.3 Torsion angles [i](#)

### 5.3.1 Protein backbone [i](#)

In the following table, the Percentiles column shows the percent Ramachandran outliers of the chain as a percentile score with respect to all X-ray entries followed by that with respect to entries of similar resolution.

The Analysed column shows the number of residues for which the backbone conformation was analysed, and the total number of residues.

Mol	Chain	Analysed	Favoured	Allowed	Outliers	Percentiles	
1	A	298/351 (85%)	290 (97%)	7 (2%)	1 (0%)	46	57
1	B	298/351 (85%)	292 (98%)	5 (2%)	1 (0%)	46	57
All	All	596/702 (85%)	582 (98%)	12 (2%)	2 (0%)	46	57

All (2) Ramachandran outliers are listed below:

Mol	Chain	Res	Type
1	B	6	VAL
1	A	6	VAL

### 5.3.2 Protein sidechains ⓘ

In the following table, the Percentiles column shows the percent sidechain outliers of the chain as a percentile score with respect to all X-ray entries followed by that with respect to entries of similar resolution.

The Analysed column shows the number of residues for which the sidechain conformation was analysed, and the total number of residues.

Mol	Chain	Analysed	Rotameric	Outliers	Percentiles	
1	A	259/297 (87%)	247 (95%)	12 (5%)	33	44
1	B	259/297 (87%)	250 (96%)	9 (4%)	43	58
All	All	518/594 (87%)	497 (96%)	21 (4%)	37	50

All (21) residues with a non-rotameric sidechain are listed below:

Mol	Chain	Res	Type
1	A	5	ASP
1	A	13	GLU
1	A	56	THR
1	A	68	MET
1	A	86	MET
1	A	87	LEU
1	A	98	ASP
1	A	158	VAL
1	A	193	ARG
1	A	236	LYS
1	A	252	LEU
1	A	258	MET
1	B	86	MET
1	B	87	LEU
1	B	98	ASP
1	B	149	LEU
1	B	158	VAL
1	B	193	ARG
1	B	224	GLU
1	B	236	LYS
1	B	252	LEU

Some sidechains can be flipped to improve hydrogen bonding and reduce clashes. All (6) such sidechains are listed below:

Mol	Chain	Res	Type
1	A	133	HIS
1	A	135	ASN
1	B	133	HIS
1	B	135	ASN
1	B	154	ASN
1	B	168	GLN

### 5.3.3 RNA ⓘ

There are no RNA molecules in this entry.

## 5.4 Non-standard residues in protein, DNA, RNA chains ⓘ

There are no non-standard protein/DNA/RNA residues in this entry.

## 5.5 Carbohydrates ⓘ

There are no carbohydrates in this entry.

## 5.6 Ligand geometry ⓘ

2 ligands are modelled in this entry.

In the following table, the Counts columns list the number of bonds (or angles) for which Mogul statistics could be retrieved, the number of bonds (or angles) that are observed in the model and the number of bonds (or angles) that are defined in the chemical component dictionary. The Link column lists molecule types, if any, to which the group is linked. The Z score for a bond length (or angle) is the number of standard deviations the observed value is removed from the expected value. A bond length (or angle) with  $|Z| > 2$  is considered an outlier worth inspection. RMSZ is the root-mean-square of all Z scores of the bond lengths (or angles).

Mol	Type	Chain	Res	Link	Bond lengths			Bond angles		
					Counts	RMSZ	$\# Z  > 2$	Counts	RMSZ	$\# Z  > 2$
2	AMP	A	338	-	20,25,25	1.10	2 (10%)	22,38,38	1.91	2 (9%)
2	AMP	B	338	-	20,25,25	1.09	2 (10%)	22,38,38	1.98	3 (13%)

In the following table, the Chirals column lists the number of chiral outliers, the number of chiral centers analysed, the number of these observed in the model and the number defined in the chemical component dictionary. Similar counts are reported in the Torsion and Rings columns. '-' means

no outliers of that kind were identified.

Mol	Type	Chain	Res	Link	Chirals	Torsions	Rings
2	AMP	A	338	-	-	0/6/26/26	0/3/3/3
2	AMP	B	338	-	-	0/6/26/26	0/3/3/3

All (4) bond length outliers are listed below:

Mol	Chain	Res	Type	Atoms	Z	Observed(Å)	Ideal(Å)
2	A	338	AMP	O4'-C1'	2.13	1.43	1.41
2	B	338	AMP	O4'-C1'	2.17	1.43	1.41
2	B	338	AMP	C5-C4	3.06	1.47	1.40
2	A	338	AMP	C5-C4	3.24	1.47	1.40

All (5) bond angle outliers are listed below:

Mol	Chain	Res	Type	Atoms	Z	Observed(°)	Ideal(°)
2	B	338	AMP	N3-C2-N1	-7.53	123.13	128.89
2	A	338	AMP	N3-C2-N1	-6.76	123.72	128.89
2	A	338	AMP	C4-C5-N7	-3.19	106.54	109.48
2	B	338	AMP	C4-C5-N7	-2.78	106.92	109.48
2	B	338	AMP	O3P-P-O2P	2.01	115.04	107.38

There are no chirality outliers.

There are no torsion outliers.

There are no ring outliers.

2 monomers are involved in 2 short contacts:

Mol	Chain	Res	Type	Clashes	Symm-Clashes
2	A	338	AMP	1	0
2	B	338	AMP	1	0

## 5.7 Other polymers [i](#)

There are no such residues in this entry.

## 5.8 Polymer linkage issues [i](#)

There are no chain breaks in this entry.

## 6 Fit of model and data ⓘ

### 6.1 Protein, DNA and RNA chains ⓘ

In the following table, the column labelled ‘#RSRZ> 2’ contains the number (and percentage) of RSRZ outliers, followed by percent RSRZ outliers for the chain as percentile scores relative to all X-ray entries and entries of similar resolution. The OWAB column contains the minimum, median, 95<sup>th</sup> percentile and maximum values of the occupancy-weighted average B-factor per residue. The column labelled ‘Q< 0.9’ lists the number of (and percentage) of residues with an average occupancy less than 0.9.

Mol	Chain	Analysed	<RSRZ>	#RSRZ>2	OWAB(Å <sup>2</sup> )	Q<0.9
1	A	300/351 (85%)	0.73	39 (13%) 5 7	30, 50, 66, 79	0
1	B	300/351 (85%)	0.66	37 (12%) 5 8	30, 50, 66, 79	0
All	All	600/702 (85%)	0.69	76 (12%) 5 8	30, 50, 66, 79	0

All (76) RSRZ outliers are listed below:

Mol	Chain	Res	Type	RSRZ
1	B	176	ALA	8.0
1	B	6	VAL	7.5
1	A	6	VAL	7.2
1	A	304	LEU	6.8
1	A	178	GLY	5.8
1	B	178	GLY	5.7
1	B	304	LEU	5.1
1	A	22	PRO	4.8
1	A	5	ASP	4.6
1	B	22	PRO	4.3
1	B	240	ARG	4.1
1	B	203	TRP	4.1
1	B	225	ARG	4.1
1	A	50	SER	4.1
1	A	203	TRP	3.8
1	A	111	PHE	3.7
1	B	40	VAL	3.7
1	A	21	GLY	3.6
1	A	46	ALA	3.6
1	A	23	PHE	3.5
1	B	50	SER	3.5
1	B	302	ARG	3.4
1	B	207	VAL	3.4
1	A	118	ALA	3.4

*Continued on next page...*

*Continued from previous page...*

Mol	Chain	Res	Type	RSRZ
1	B	221	GLY	3.4
1	A	225	ARG	3.4
1	B	23	PHE	3.4
1	B	209	LEU	3.3
1	A	303	LYS	3.3
1	A	40	VAL	3.3
1	A	209	LEU	3.2
1	A	212	LEU	3.1
1	B	301	ARG	3.1
1	A	187	ALA	3.1
1	B	52	PRO	3.1
1	A	176	ALA	3.0
1	B	300	ALA	3.0
1	A	240	ARG	3.0
1	A	188	PRO	2.9
1	A	213	LEU	2.9
1	B	280	ASP	2.9
1	A	200	VAL	2.8
1	A	171	GLU	2.8
1	B	281	ARG	2.8
1	B	212	LEU	2.8
1	A	84	ASP	2.7
1	A	39	ALA	2.7
1	A	52	PRO	2.7
1	B	303	LYS	2.7
1	B	5	ASP	2.7
1	B	257	LEU	2.6
1	B	21	GLY	2.6
1	A	236	LYS	2.6
1	B	245	ILE	2.5
1	A	290	GLU	2.5
1	B	213	LEU	2.4
1	A	204	GLY	2.4
1	B	187	ALA	2.4
1	B	200	VAL	2.4
1	A	153	GLU	2.4
1	B	86	MET	2.4
1	B	247	GLU	2.3
1	A	190	VAL	2.3
1	A	205	CYS	2.3
1	A	301	ARG	2.2
1	A	67	HIS	2.2

*Continued on next page...*

*Continued from previous page...*

Mol	Chain	Res	Type	RSRZ
1	B	91	PHE	2.2
1	B	210	PHE	2.1
1	A	234	LYS	2.1
1	A	85	GLY	2.1
1	B	253	VAL	2.1
1	B	193	ARG	2.0
1	B	89	MET	2.0
1	B	51	SER	2.0
1	A	89	MET	2.0
1	A	257	LEU	2.0

## 6.2 Non-standard residues in protein, DNA, RNA chains [i](#)

There are no non-standard protein/DNA/RNA residues in this entry.

## 6.3 Carbohydrates [i](#)

There are no carbohydrates in this entry.

## 6.4 Ligands [i](#)

In the following table, the Atoms column lists the number of modelled atoms in the group and the number defined in the chemical component dictionary. LLDF column lists the quality of electron density of the group with respect to its neighbouring residues in protein, DNA or RNA chains. The B-factors column lists the minimum, median, 95<sup>th</sup> percentile and maximum values of B factors of atoms in the group. The column labelled 'Q< 0.9' lists the number of atoms with occupancy less than 0.9.

Mol	Type	Chain	Res	Atoms	RSCC	RSR	LLDF	B-factors( $\text{\AA}^2$ )	Q<0.9
2	AMP	B	338	23/23	0.89	0.17	-0.11	41,51,81,83	0
2	AMP	A	338	23/23	0.85	0.16	-0.39	50,56,85,87	0

## 6.5 Other polymers [i](#)

There are no such residues in this entry.