



Full wwPDB X-ray Structure Validation Report ⓘ

Feb 1, 2016 – 03:23 PM GMT

PDB ID : 4C2V
Title : Aurora B kinase in complex with the specific inhibitor Barasertib
Authors : Sessa, F.; Villa, F.
Deposited on : 2013-08-20
Resolution : 1.49 Å(reported)

This is a Full wwPDB X-ray Structure Validation Report for a publicly released PDB entry.
We welcome your comments at validation@mail.wwpdb.org
A user guide is available at
<http://wwpdb.org/validation/2016/XrayValidationReportHelp>
with specific help available everywhere you see the ⓘ symbol.

The following versions of software and data (see [references ⓘ](#)) were used in the production of this report:

MolProbity : 4.02b-467
Mogul : 1.7 (RC4), CSD as536be (2015)
Xtriage (Phenix) : 1.9-1692
EDS : rb-20026688
Percentile statistics : 20151230.v01 (using entries in the PDB archive December 30th 2015)
Refmac : 5.8.0135
CCP4 : 6.5.0
Ideal geometry (proteins) : Engh & Huber (2001)
Ideal geometry (DNA, RNA) : Parkinson et al. (1996)
Validation Pipeline (wwPDB-VP) : trunk26865

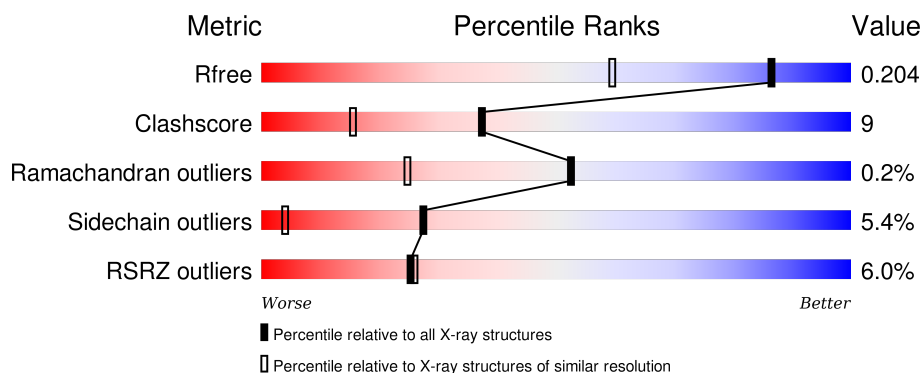
1 Overall quality at a glance

The following experimental techniques were used to determine the structure:

X-RAY DIFFRACTION

The reported resolution of this entry is 1.49 Å.

Percentile scores (ranging between 0-100) for global validation metrics of the entry are shown in the following graphic. The table shows the number of entries on which the scores are based.



Metric	Whole archive (#Entries)	Similar resolution (#Entries, resolution range(Å))
R_{free}	91344	2072 (1.50-1.50)
Clashscore	102246	2274 (1.50-1.50)
Ramachandran outliers	100387	2218 (1.50-1.50)
Sidechain outliers	100360	2216 (1.50-1.50)
RSRZ outliers	91569	2075 (1.50-1.50)

The table below summarises the geometric issues observed across the polymeric chains and their fit to the electron density. The red, orange, yellow and green segments on the lower bar indicate the fraction of residues that contain outliers for ≥ 3 , 2, 1 and 0 types of geometric quality criteria. A grey segment represents the fraction of residues that are not modelled. The numeric value for each fraction is indicated below the corresponding segment, with a dot representing fractions $\leq 5\%$. The upper red bar (where present) indicates the fraction of residues that have poor fit to the electron density. The numeric value is given above the bar.

Mol	Chain	Length	Quality of chain
1	A	285	<div> <div>2%</div> <div>77%</div> <div>14%</div> <div>5%</div> </div>
1	B	285	<div> <div>7%</div> <div>75%</div> <div>20%</div> <div>...</div> </div>
2	C	44	<div> <div>5%</div> <div>80%</div> <div>7%</div> <div>7%</div> <div>7%</div> </div>
2	D	44	<div> <div>25%</div> <div>77%</div> <div>18%</div> <div>..</div> </div>

The following table lists non-polymeric compounds, carbohydrate monomers and non-standard

residues in protein, DNA, RNA chains that are outliers for geometric or electron-density-fit criteria:

Mol	Type	Chain	Res	Chirality	Geometry	Clashes	Electron density
3	YJA	A	1357	-	-	-	X
3	YJA	B	1357	-	-	-	X

2 Entry composition [i](#)

There are 4 unique types of molecules in this entry. The entry contains 5996 atoms, of which 0 are hydrogens and 0 are deuteriums.

In the tables below, the ZeroOcc column contains the number of atoms modelled with zero occupancy, the AltConf column contains the number of residues with at least one atom in alternate conformation and the Trace column contains the number of residues modelled with at most 2 atoms.

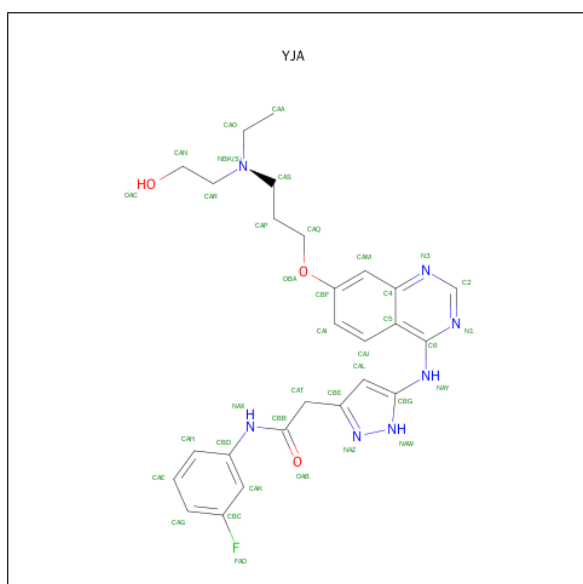
- Molecule 1 is a protein called AURORA KINASE B-A.

Mol	Chain	Residues	Atoms						ZeroOcc	AltConf	Trace
1	A	271	Total	C	N	O	P	S	0	3	0
			2276	1458	408	396	1	13			
1	B	281	Total	C	N	O	P	S	0	4	0
			2366	1512	428	411	1	14			

- Molecule 2 is a protein called INNER CENTROMERE PROTEIN A.

Mol	Chain	Residues	Atoms					ZeroOcc	AltConf	Trace
2	C	41	Total	C	N	O	S	0	0	0
			334	217	54	62	1			
2	D	43	Total	C	N	O	S	0	0	0
			351	225	58	67	1			

- Molecule 3 is 2-[5-[[7-[3-[ETHYL(2-HYDROXYETHYL)AMINO]PROPOXY]QUINAZOLIN-4-YL]AMINO]-1H-PYRAZOL-3-YL]-N-(3-FLUOROPHENYL)ETHANAMIDE (three-letter code: YJA) (formula: C₂₆H₃₀FN₇O₃).



Mol	Chain	Residues	Atoms					ZeroOcc	AltConf
3	A	1	Total	C	F	N	O	0	0
			37	26	1	7	3		
3	B	1	Total	C	F	N	O	0	0
			37	26	1	7	3		

- Molecule 4 is water.

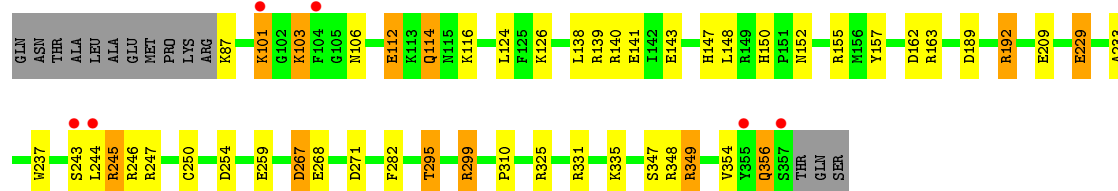
Mol	Chain	Residues	Atoms		ZeroOcc	AltConf
4	A	280	Total	O	0	0
			280	280		
4	B	282	Total	O	0	0
			282	282		
4	C	12	Total	O	0	0
			12	12		
4	D	21	Total	O	0	0
			21	21		

3 Residue-property plots [i](#)

These plots are drawn for all protein, RNA and DNA chains in the entry. The first graphic for a chain summarises the proportions of errors displayed in the second graphic. The second graphic shows the sequence view annotated by issues in geometry and electron density. Residues are color-coded according to the number of geometric quality criteria for which they contain at least one outlier: green = 0, yellow = 1, orange = 2 and red = 3 or more. A red dot above a residue indicates a poor fit to the electron density ($RSRZ > 2$). Stretches of 2 or more consecutive residues without any outlier are shown as a green connector. Residues present in the sample, but not in the model, are shown in grey.

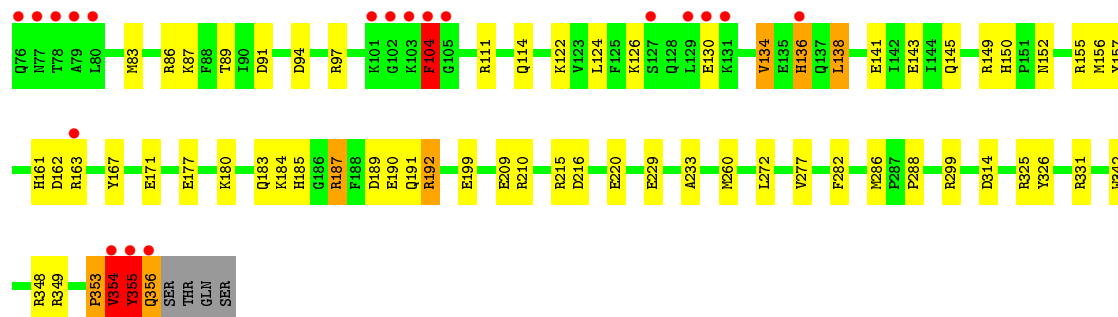
• Molecule 1: AURORA KINASE B-A

Chain A: 



• Molecule 1: AURORA KINASE B-A

Chain B: 




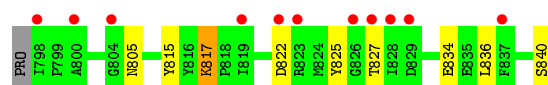
• Molecule 2: INNER CENTROMERE PROTEIN A

Chain C: 



• Molecule 2: INNER CENTROMERE PROTEIN A

Chain D: 



4 Data and refinement statistics

Property	Value	Source
Space group	P 1 21 1	Depositor
Cell constants a, b, c, α , β , γ	46.06 Å 68.10 Å 117.09 Å 90.00° 96.65° 90.00°	Depositor
Resolution (Å)	38.77 – 1.49 44.22 – 1.49	Depositor EDS
% Data completeness (in resolution range)	98.5 (38.77-1.49) 98.4 (44.22-1.49)	Depositor EDS
R_{merge}	0.05	Depositor
R_{sym}	(Not available)	Depositor
$\langle I/\sigma(I) \rangle$ ¹	1.19 (at 1.49 Å)	Xtriage
Refinement program	REFMAC 5.7.0029	Depositor
R, R_{free}	0.167 , 0.197 0.177 , 0.204	Depositor DCC
R_{free} test set	5766 reflections (5.26%)	DCC
Wilson B-factor (Å ²)	16.0	Xtriage
Anisotropy	0.439	Xtriage
Bulk solvent k_{sol} (e/Å ³), B_{sol} (Å ²)	0.33 , 42.5	EDS
Estimated twinning fraction	No twinning to report.	Xtriage
L-test for twinning ²	$\langle L \rangle = 0.48$, $\langle L^2 \rangle = 0.30$	Xtriage
Outliers	0 of 115286 reflections	Xtriage
F_o, F_c correlation	0.96	EDS
Total number of atoms	5996	wwPDB-VP
Average B, all atoms (Å ²)	23.0	wwPDB-VP

Xtriage's analysis on translational NCS is as follows: *The largest off-origin peak in the Patterson function is 4.98% of the height of the origin peak. No significant pseudotranslation is detected.*

¹Intensities estimated from amplitudes.

²Theoretical values of $\langle |L| \rangle$, $\langle L^2 \rangle$ for acentric reflections are 0.5, 0.375 respectively for untwinned datasets, and 0.333, 0.2 for perfectly twinned datasets.

5 Model quality ⓘ

5.1 Standard geometry ⓘ

Bond lengths and bond angles in the following residue types are not validated in this section: TPO, YJA

The Z score for a bond length (or angle) is the number of standard deviations the observed value is removed from the expected value. A bond length (or angle) with $|Z| > 5$ is considered an outlier worth inspection. RMSZ is the root-mean-square of all Z scores of the bond lengths (or angles).

Mol	Chain	Bond lengths		Bond angles	
		RMSZ	# Z >5	RMSZ	# Z >5
1	A	1.29	11/2326 (0.5%)	1.44	25/3130 (0.8%)
1	B	1.21	8/2417 (0.3%)	1.30	27/3252 (0.8%)
2	C	1.06	1/343 (0.3%)	1.22	1/466 (0.2%)
2	D	0.95	1/359 (0.3%)	1.04	0/485
All	All	1.22	21/5445 (0.4%)	1.35	53/7333 (0.7%)

Chiral center outliers are detected by calculating the chiral volume of a chiral center and verifying if the center is modelled as a planar moiety or with the opposite hand. A planarity outlier is detected by checking planarity of atoms in a peptide group, atoms in a mainchain group or atoms of a sidechain that are expected to be planar.

Mol	Chain	#Chirality outliers	#Planarity outliers
1	B	1	4

All (21) bond length outliers are listed below:

Mol	Chain	Res	Type	Atoms	Z	Observed(Å)	Ideal(Å)
1	A	209	GLU	CD-OE1	11.23	1.38	1.25
1	B	143	GLU	CD-OE1	10.03	1.36	1.25
1	A	246	ARG	CD-NE	-9.78	1.29	1.46
1	B	220	GLU	CD-OE1	8.71	1.35	1.25
1	B	229	GLU	CD-OE1	-8.13	1.16	1.25
1	A	259	GLU	CD-OE1	7.66	1.34	1.25
1	B	199	GLU	CD-OE2	7.15	1.33	1.25
1	B	143	GLU	CG-CD	6.89	1.62	1.51
1	A	229	GLU	CD-OE1	-6.73	1.18	1.25
1	A	246	ARG	CZ-NH2	-5.58	1.25	1.33
1	B	342	TRP	CD1-NE1	-5.54	1.28	1.38
1	A	349	ARG	CG-CD	-5.51	1.38	1.51
1	B	326	TYR	CE2-CZ	-5.39	1.31	1.38
1	A	347	SER	CA-CB	-5.33	1.45	1.52

Continued on next page...

Continued from previous page...

Mol	Chain	Res	Type	Atoms	Z	Observed(Å)	Ideal(Å)
1	A	157	TYR	CE2-CZ	-5.25	1.31	1.38
2	C	815	TYR	CG-CD1	5.18	1.45	1.39
2	D	815	TYR	CG-CD1	5.11	1.45	1.39
1	B	190	GLU	CD-OE2	-5.10	1.20	1.25
1	A	141	GLU	CD-OE2	-5.06	1.20	1.25
1	A	163	ARG	CD-NE	-5.02	1.38	1.46
1	A	209	GLU	CG-CD	5.02	1.59	1.51

All (53) bond angle outliers are listed below:

Mol	Chain	Res	Type	Atoms	Z	Observed(°)	Ideal(°)
1	A	246	ARG	NE-CZ-NH2	-22.15	109.22	120.30
1	B	325	ARG	NE-CZ-NH2	-14.63	112.98	120.30
1	A	163	ARG	NE-CZ-NH2	-13.89	113.36	120.30
1	A	246	ARG	NE-CZ-NH1	13.17	126.89	120.30
1	A	245	ARG	NE-CZ-NH2	-12.46	114.07	120.30
1	A	192	ARG	NE-CZ-NH2	-12.09	114.25	120.30
1	B	260	MET	CG-SD-CE	-12.06	80.90	100.20
1	A	163	ARG	NE-CZ-NH1	10.55	125.57	120.30
1	A	325	ARG	NE-CZ-NH1	10.34	125.47	120.30
1	A	245	ARG	NE-CZ-NH1	10.03	125.32	120.30
1	A	247	ARG	NE-CZ-NH2	-8.71	115.95	120.30
1	B	331	ARG	NE-CZ-NH2	-8.17	116.21	120.30
1	B	210	ARG	NE-CZ-NH1	7.75	124.17	120.30
1	B	325	ARG	NE-CZ-NH1	7.42	124.01	120.30
1	B	162	ASP	CB-CG-OD1	7.25	124.83	118.30
2	C	815	TYR	CB-CG-CD1	7.21	125.33	121.00
1	A	192	ARG	NE-CZ-NH1	7.03	123.81	120.30
1	B	83	MET	CG-SD-CE	6.82	111.11	100.20
1	A	282	PHE	CB-CG-CD2	-6.70	116.11	120.80
1	A	271	ASP	CB-CG-OD2	-6.60	112.36	118.30
1	A	140	ARG	NE-CZ-NH1	6.48	123.54	120.30
1	B	215	ARG	NE-CZ-NH1	6.48	123.54	120.30
1	B	189	ASP	CB-CG-OD1	6.47	124.13	118.30
1	B	187[A]	ARG	NE-CZ-NH1	6.40	123.50	120.30
1	B	187[B]	ARG	NE-CZ-NH1	6.40	123.50	120.30
1	A	229	GLU	CA-CB-CG	6.32	127.31	113.40
1	A	349	ARG	NE-CZ-NH1	-6.17	117.21	120.30
1	A	209	GLU	CG-CD-OE2	-6.16	105.97	118.30
1	A	267	ASP	CB-CG-OD1	5.97	123.68	118.30
1	B	192	ARG	NE-CZ-NH2	-5.95	117.33	120.30
1	B	282	PHE	CB-CG-CD2	-5.88	116.68	120.80

Continued on next page...

Continued from previous page...

Mol	Chain	Res	Type	Atoms	Z	Observed(°)	Ideal(°)
1	A	254	ASP	CB-CG-OD2	-5.76	113.12	118.30
1	B	299	ARG	NE-CZ-NH1	5.63	123.12	120.30
1	B	104	PHE	CA-C-N	5.62	127.43	116.20
1	A	209	GLU	CG-CD-OE1	5.61	129.52	118.30
1	A	189	ASP	CB-CG-OD1	5.58	123.32	118.30
1	B	272	LEU	CB-CG-CD2	5.55	120.43	111.00
1	B	111	ARG	NE-CZ-NH2	-5.52	117.54	120.30
1	B	157	TYR	CG-CD1-CE1	5.31	125.55	121.30
1	B	216	ASP	CB-CG-OD1	5.26	123.03	118.30
1	A	247	ARG	NE-CZ-NH1	5.21	122.91	120.30
1	B	314	ASP	CB-CG-OD2	-5.18	113.63	118.30
1	A	331	ARG	NE-CZ-NH2	5.16	122.88	120.30
1	B	167	TYR	CB-CG-CD1	-5.16	117.91	121.00
1	B	187[A]	ARG	NE-CZ-NH2	-5.12	117.74	120.30
1	B	187[B]	ARG	NE-CZ-NH2	-5.12	117.74	120.30
1	B	229	GLU	CG-CD-OE1	-5.09	108.12	118.30
1	A	140	ARG	NE-CZ-NH2	-5.08	117.76	120.30
1	B	143	GLU	CA-CB-CG	5.07	124.55	113.40
1	B	199	GLU	OE1-CD-OE2	-5.05	117.24	123.30
1	A	162	ASP	CB-CG-OD2	-5.04	113.77	118.30
1	A	299	ARG	CG-CD-NE	-5.02	101.26	111.80
1	B	220	GLU	CG-CD-OE2	-5.01	108.28	118.30

All (1) chirality outliers are listed below:

Mol	Chain	Res	Type	Atom
1	B	89	THR	CB

All (4) planarity outliers are listed below:

Mol	Chain	Res	Type	Group
1	B	104	PHE	Peptide
1	B	353	PRO	Peptide
1	B	354	VAL	Peptide
1	B	355	TYR	Peptide

5.2 Too-close contacts

In the following table, the Non-H and H(model) columns list the number of non-hydrogen atoms and hydrogen atoms in the chain respectively. The H(added) column lists the number of hydrogen atoms added and optimized by MolProbity. The Clashes column lists the number of clashes within

the asymmetric unit, whereas Symm-Clashes lists symmetry related clashes.

Mol	Chain	Non-H	H(model)	H(added)	Clashes	Symm-Clashes
1	A	2276	0	2277	34	1
1	B	2366	0	2372	53	0
2	C	334	0	331	4	0
2	D	351	0	347	5	0
3	A	37	0	30	6	0
3	B	37	0	30	12	0
4	A	280	0	0	11	5
4	B	282	0	0	21	2
4	C	12	0	0	2	1
4	D	21	0	0	2	0
All	All	5996	0	5387	100	6

The all-atom clashscore is defined as the number of clashes found per 1000 atoms (including hydrogen atoms). The all-atom clashscore for this structure is 9.

All (100) close contacts within the same asymmetric unit are listed below, sorted by their clash magnitude.

Atom-1	Atom-2	Interatomic distance (Å)	Clash overlap (Å)
3:B:1357:YJA:FAD	3:B:1357:YJA:CBC	1.64	1.36
1:B:185:HIS:CE1	4:B:2119:HOH:O	1.73	1.29
1:B:348:ARG:CZ	4:B:2277:HOH:O	1.89	1.21
1:B:348:ARG:NH2	4:B:2277:HOH:O	1.73	1.19
1:B:94:ASP:OD2	4:B:2024:HOH:O	1.70	1.07
1:B:286:MET:HG2	4:B:2214:HOH:O	1.55	1.04
1:B:355:TYR:HB3	1:B:356:GLN:HA	1.45	0.98
1:A:101:LYS:NZ	1:A:106:ASN:OD1	2.08	0.86
3:B:1357:YJA:OAB	3:B:1357:YJA:HAK	1.81	0.81
1:B:150:HIS:HD2	1:B:152:ASN:H	1.26	0.80
1:A:150:HIS:HD2	1:A:152:ASN:H	1.26	0.80
1:B:354:VAL:HG12	1:B:355:TYR:H	1.46	0.79
1:B:185:HIS:ND1	4:B:2119:HOH:O	1.95	0.78
1:B:134:VAL:HG13	4:B:2044:HOH:O	1.84	0.77
1:B:114:GLN:NE2	4:B:2013:HOH:O	2.17	0.77
1:A:143:GLU:OE1	4:A:2047:HOH:O	2.02	0.75
1:A:268:GLU:HG3	4:A:2137:HOH:O	1.89	0.73
1:A:139:ARG:NH2	4:A:2039:HOH:O	2.10	0.73
1:B:191:GLN:HG2	4:B:2277:HOH:O	1.88	0.72
1:B:353:PRO:HB3	1:B:354:VAL:HB	1.71	0.72
1:A:356:GLN:HA	1:A:356:GLN:OE1	1.89	0.71
1:B:355:TYR:CB	1:B:356:GLN:HA	2.18	0.71

Continued on next page...

Continued from previous page...

Atom-1	Atom-2	Interatomic distance (Å)	Clash overlap (Å)
1:B:150:HIS:CD2	1:B:152:ASN:H	2.09	0.70
1:B:138:LEU:HD23	3:B:1357:YJA:HAG	1.74	0.70
1:A:150:HIS:CD2	1:A:152:ASN:H	2.08	0.70
1:B:191:GLN:CG	4:B:2277:HOH:O	2.38	0.70
3:A:1357:YJA:CAH	4:A:2043:HOH:O	2.42	0.65
1:B:355:TYR:HB3	1:B:356:GLN:CA	2.23	0.63
2:D:834:GLU:HB3	4:D:2018:HOH:O	1.98	0.63
1:A:237:TRP:CD2	1:A:250:CYS:HB2	2.34	0.62
1:A:138:LEU:HD12	3:A:1357:YJA:HAG	1.82	0.62
1:B:138:LEU:CD2	3:B:1357:YJA:HAG	2.30	0.61
1:A:112:GLU:HG2	2:D:825:TYR:OH	2.00	0.61
1:A:310:PRO:HG2	4:A:2226:HOH:O	2.00	0.61
3:A:1357:YJA:HAP2	3:A:1357:YJA:HAN1	1.85	0.59
1:A:101:LYS:HA	1:A:101:LYS:HZ3	1.66	0.59
2:D:817:LYS:HG2	4:D:2014:HOH:O	2.03	0.58
1:B:353:PRO:CB	1:B:354:VAL:HB	2.33	0.58
1:A:143:GLU:O	1:A:147:HIS:HD2	1.86	0.58
1:B:354:VAL:HG12	1:B:355:TYR:N	2.18	0.58
1:B:126:LYS:NZ	1:B:161:HIS:HD2	2.03	0.56
1:B:134:VAL:CG1	4:B:2044:HOH:O	2.49	0.56
1:B:353:PRO:CA	1:B:354:VAL:HB	2.36	0.56
1:A:152:ASN:HD21	1:A:349:ARG:HH21	1.53	0.56
1:A:103:LYS:HE3	1:A:103:LYS:H	1.70	0.55
1:B:122:LYS:HE2	1:B:124:LEU:HD21	1.87	0.55
1:B:89:THR:HG23	1:B:91:ASP:H	1.72	0.54
1:B:354:VAL:CG1	1:B:355:TYR:H	2.19	0.54
1:A:233:ALA:O	3:A:1357:YJA:HAT1	2.07	0.54
1:B:171:GLU:O	3:B:1357:YJA:H2	2.08	0.53
1:B:354:VAL:CG1	1:B:355:TYR:N	2.71	0.53
3:B:1357:YJA:OAB	3:B:1357:YJA:CAK	2.50	0.52
1:A:245:ARG:NH2	1:A:267:ASP:OD2	2.42	0.52
1:B:191:GLN:HG3	4:B:2277:HOH:O	2.06	0.52
1:B:155:ARG:NE	4:B:2069:HOH:O	2.42	0.52
2:C:834:GLU:HG3	4:C:2012:HOH:O	2.10	0.52
1:A:237:TRP:CE3	1:A:250:CYS:HB2	2.45	0.52
1:B:348:ARG:NE	4:B:2277:HOH:O	2.25	0.52
1:A:295:THR:HG23	4:A:2214:HOH:O	2.09	0.51
1:B:141:GLU:HG2	3:B:1357:YJA:CAE	2.40	0.51
1:A:354:VAL:HG12	4:A:2274:HOH:O	2.10	0.51
2:C:823:ARG:NH1	4:C:2010:HOH:O	2.25	0.51
1:B:87:LYS:HE3	4:B:2007:HOH:O	2.11	0.50

Continued on next page...

Continued from previous page...

Atom-1	Atom-2	Interatomic distance (Å)	Clash overlap (Å)
3:B:1357:YJA:HAL	3:B:1357:YJA:N1	2.27	0.50
1:B:209:GLU:HG2	4:B:2153:HOH:O	2.12	0.49
1:A:112:GLU:OE2	1:A:114:GLN:HB2	2.12	0.49
3:A:1357:YJA:HAH	4:A:2043:HOH:O	2.10	0.49
1:A:155:ARG:NH2	2:D:822:ASP:OD2	2.46	0.48
1:B:184:LYS:HE2	4:B:2119:HOH:O	2.14	0.48
1:B:155:ARG:HD2	4:B:2066:HOH:O	2.13	0.48
1:A:101:LYS:HA	1:A:101:LYS:NZ	2.29	0.47
1:B:145:GLN:OE1	3:B:1357:YJA:HAH	2.14	0.47
1:B:353:PRO:HA	1:B:354:VAL:HB	1.96	0.47
1:B:353:PRO:HD3	2:C:815:TYR:CZ	2.50	0.47
1:B:152:ASN:HD21	1:B:349:ARG:HH21	1.63	0.46
1:B:354:VAL:O	1:B:355:TYR:CG	2.70	0.45
1:A:87:LYS:HD2	4:A:2002:HOH:O	2.17	0.45
1:B:136:HIS:C	1:B:136:HIS:CD2	2.90	0.44
1:B:286:MET:HE3	4:B:2214:HOH:O	2.16	0.44
1:A:237:TRP:CE3	1:A:250:CYS:CB	3.01	0.44
1:A:152:ASN:ND2	1:A:349:ARG:HH21	2.16	0.43
1:B:277:VAL:HG13	1:B:288:PRO:HD2	2.00	0.43
1:A:101:LYS:CE	1:A:101:LYS:HA	2.49	0.43
1:B:156:MET:CE	3:B:1357:YJA:HAH	2.48	0.43
1:A:139:ARG:HB2	1:A:139:ARG:CZ	2.48	0.43
1:A:126:LYS:HE2	2:D:836:LEU:O	2.19	0.43
1:A:354:VAL:HG23	4:A:2274:HOH:O	2.17	0.43
1:A:101:LYS:CE	1:A:106:ASN:OD1	2.67	0.42
1:B:161:HIS:HE1	4:B:2095:HOH:O	2.02	0.42
1:B:187[B]:ARG:HH11	1:B:187[B]:ARG:HD3	1.72	0.42
1:A:243:SER:OG	1:A:244:LEU:HD13	2.19	0.42
1:A:138:LEU:CD1	3:A:1357:YJA:HAG	2.48	0.42
1:A:155:ARG:NH1	4:A:2063:HOH:O	2.49	0.42
1:B:104:PHE:HE1	1:B:177:GLU:CD	2.23	0.41
3:B:1357:YJA:CAL	3:B:1357:YJA:N1	2.80	0.41
1:B:233:ALA:O	3:B:1357:YJA:HAT1	2.20	0.41
1:B:180:LYS:HA	1:B:183:GLN:HG2	2.03	0.40
1:B:355:TYR:HA	1:B:355:TYR:HD1	1.74	0.40
2:C:824:MET:HE3	2:C:824:MET:HB3	1.79	0.40
1:B:149:ARG:HD2	4:B:2052:HOH:O	2.21	0.40

All (6) symmetry-related close contacts are listed below. The label for Atom-2 includes the symmetry operator and encoded unit-cell translations to be applied.

Atom-1	Atom-2	Interatomic distance (Å)	Clash overlap (Å)
4:A:2032:HOH:O	4:A:2098:HOH:O[2_555]	1.16	1.04
4:B:2223:HOH:O	4:C:2001:HOH:O[2_756]	1.21	0.99
4:A:2008:HOH:O	4:A:2212:HOH:O[2_555]	1.21	0.99
4:A:2007:HOH:O	4:A:2214:HOH:O[2_555]	1.43	0.77
1:A:348:ARG:NH1	4:A:2197:HOH:O[1_655]	1.99	0.21
4:A:2258:HOH:O	4:B:2229:HOH:O[1_545]	2.12	0.08

5.3 Torsion angles [i](#)

5.3.1 Protein backbone [i](#)

In the following table, the Percentiles column shows the percent Ramachandran outliers of the chain as a percentile score with respect to all X-ray entries followed by that with respect to entries of similar resolution.

The Analysed column shows the number of residues for which the backbone conformation was analysed, and the total number of residues.

Mol	Chain	Analysed	Favoured	Allowed	Outliers	Percentiles	
1	A	271/285 (95%)	262 (97%)	9 (3%)	0	100	100
1	B	282/285 (99%)	271 (96%)	10 (4%)	1 (0%)	39	14
2	C	39/44 (89%)	39 (100%)	0	0	100	100
2	D	41/44 (93%)	40 (98%)	1 (2%)	0	100	100
All	All	633/658 (96%)	612 (97%)	20 (3%)	1 (0%)	52	25

All (1) Ramachandran outliers are listed below:

Mol	Chain	Res	Type
1	B	354	VAL

5.3.2 Protein sidechains [i](#)

In the following table, the Percentiles column shows the percent sidechain outliers of the chain as a percentile score with respect to all X-ray entries followed by that with respect to entries of similar resolution.

The Analysed column shows the number of residues for which the sidechain conformation was analysed, and the total number of residues.

Mol	Chain	Analysed	Rotameric	Outliers	Percentiles	
1	A	247/256 (96%)	234 (95%)	13 (5%)	28	4
1	B	256/256 (100%)	246 (96%)	10 (4%)	39	8
2	C	36/39 (92%)	32 (89%)	4 (11%)	8	0
2	D	38/39 (97%)	34 (90%)	4 (10%)	8	0
All	All	577/590 (98%)	546 (95%)	31 (5%)	27	4

All (31) residues with a non-rotameric sidechain are listed below:

Mol	Chain	Res	Type
1	A	101	LYS
1	A	103	LYS
1	A	112	GLU
1	A	114	GLN
1	A	116	LYS
1	A	124	LEU
1	A	148	LEU
1	A	192	ARG
1	A	229	GLU
1	A	295	THR
1	A	299	ARG
1	A	335	LYS
1	A	356	GLN
1	B	86	ARG
1	B	97	ARG
1	B	130	GLU
1	B	134	VAL
1	B	136	HIS
1	B	138	LEU
1	B	163	ARG
1	B	192	ARG
1	B	355	TYR
1	B	356	GLN
2	C	806	LEU
2	C	823	ARG
2	C	829	ASP
2	C	834	GLU
2	D	805	ASN
2	D	817	LYS
2	D	827	THR
2	D	840	SER

Some sidechains can be flipped to improve hydrogen bonding and reduce clashes. All (10) such

sidechains are listed below:

Mol	Chain	Res	Type
1	A	128	GLN
1	A	136	HIS
1	A	147	HIS
1	A	150	HIS
1	A	152	ASN
1	A	298	HIS
1	B	115	ASN
1	B	150	HIS
1	B	152	ASN
1	B	161	HIS

5.3.3 RNA ⓘ

There are no RNA molecules in this entry.

5.4 Non-standard residues in protein, DNA, RNA chains ⓘ

2 non-standard protein/DNA/RNA residues are modelled in this entry.

In the following table, the Counts columns list the number of bonds (or angles) for which Mogul statistics could be retrieved, the number of bonds (or angles) that are observed in the model and the number of bonds (or angles) that are defined in the chemical component dictionary. The Link column lists molecule types, if any, to which the group is linked. The Z score for a bond length (or angle) is the number of standard deviations the observed value is removed from the expected value. A bond length (or angle) with $|Z| > 2$ is considered an outlier worth inspection. RMSZ is the root-mean-square of all Z scores of the bond lengths (or angles).

Mol	Type	Chain	Res	Link	Bond lengths			Bond angles		
					Counts	RMSZ	$\# Z > 2$	Counts	RMSZ	$\# Z > 2$
1	TPO	A	248	1	8,10,11	0.49	0	7,14,16	1.44	1 (14%)
1	TPO	B	248	1	8,10,11	0.87	0	7,14,16	1.55	1 (14%)

In the following table, the Chirals column lists the number of chiral outliers, the number of chiral centers analysed, the number of these observed in the model and the number defined in the chemical component dictionary. Similar counts are reported in the Torsion and Rings columns. '-' means no outliers of that kind were identified.

Mol	Type	Chain	Res	Link	Chirals	Torsions	Rings
1	TPO	A	248	1	-	0/8/11/13	0/0/0/0
1	TPO	B	248	1	-	0/8/11/13	0/0/0/0

There are no bond length outliers.

All (2) bond angle outliers are listed below:

Mol	Chain	Res	Type	Atoms	Z	Observed($^{\circ}$)	Ideal($^{\circ}$)
1	B	248	TPO	OG1-P-O1P	-2.57	100.68	107.11
1	A	248	TPO	C-CA-N	2.97	116.04	109.83

There are no chirality outliers.

There are no torsion outliers.

There are no ring outliers.

No monomer is involved in short contacts.

5.5 Carbohydrates [i](#)

There are no carbohydrates in this entry.

5.6 Ligand geometry [i](#)

2 ligands are modelled in this entry.

In the following table, the Counts columns list the number of bonds (or angles) for which Mogul statistics could be retrieved, the number of bonds (or angles) that are observed in the model and the number of bonds (or angles) that are defined in the chemical component dictionary. The Link column lists molecule types, if any, to which the group is linked. The Z score for a bond length (or angle) is the number of standard deviations the observed value is removed from the expected value. A bond length (or angle) with $|Z| > 2$ is considered an outlier worth inspection. RMSZ is the root-mean-square of all Z scores of the bond lengths (or angles).

Mol	Type	Chain	Res	Link	Bond lengths			Bond angles		
					Counts	RMSZ	$\# Z > 2$	Counts	RMSZ	$\# Z > 2$
3	YJA	A	1357	-	39,40,40	1.71	6 (15%)	47,53,53	2.35	16 (34%)
3	YJA	B	1357	-	39,40,40	2.81	7 (17%)	47,53,53	2.82	18 (38%)

In the following table, the Chirals column lists the number of chiral outliers, the number of chiral centers analysed, the number of these observed in the model and the number defined in the chemical component dictionary. Similar counts are reported in the Torsion and Rings columns. '-' means no outliers of that kind were identified.

Mol	Type	Chain	Res	Link	Chirals	Torsions	Rings
3	YJA	A	1357	-	-	0/20/24/24	0/4/4/4
3	YJA	B	1357	-	-	0/20/24/24	0/4/4/4

All (13) bond length outliers are listed below:

Mol	Chain	Res	Type	Atoms	Z	Observed(Å)	Ideal(Å)
3	B	1357	YJA	CBD-NAX	-4.86	1.32	1.41
3	A	1357	YJA	NAW-NAZ	-3.90	1.29	1.37
3	B	1357	YJA	CAL-CBE	-2.89	1.35	1.39
3	A	1357	YJA	CAJ-CAI	2.56	1.42	1.36
3	A	1357	YJA	CAT-CBB	2.62	1.58	1.51
3	B	1357	YJA	CAT-CBB	2.64	1.58	1.51
3	B	1357	YJA	CAM-C4	2.69	1.45	1.41
3	A	1357	YJA	C6-N1	2.74	1.38	1.34
3	B	1357	YJA	C2-N3	3.87	1.39	1.32
3	A	1357	YJA	CAT-CBE	4.90	1.56	1.51
3	A	1357	YJA	FAD-CBC	5.56	1.49	1.36
3	B	1357	YJA	CAT-CBE	8.54	1.60	1.51
3	B	1357	YJA	FAD-CBC	12.10	1.64	1.36

All (34) bond angle outliers are listed below:

Mol	Chain	Res	Type	Atoms	Z	Observed(°)	Ideal(°)
3	B	1357	YJA	C5-C4-N3	-6.93	115.51	122.88
3	A	1357	YJA	C5-C6-N1	-5.88	117.27	121.46
3	B	1357	YJA	CAG-CBC-CAK	-5.38	116.41	123.35
3	A	1357	YJA	CAJ-C5-C4	-4.80	113.43	118.33
3	B	1357	YJA	N3-C2-N1	-4.41	125.52	128.89
3	A	1357	YJA	C5-C4-N3	-3.48	119.18	122.88
3	B	1357	YJA	CAJ-C5-C4	-3.38	114.88	118.33
3	B	1357	YJA	CBD-NAX-CBB	-3.32	121.17	127.47
3	A	1357	YJA	CAL-CBG-NAW	-3.30	105.90	110.55
3	B	1357	YJA	CAL-CBG-NAW	-3.29	105.90	110.55
3	B	1357	YJA	CAP-CAS-NBK	-3.18	105.90	113.89
3	B	1357	YJA	CAL-CBE-NAZ	-3.13	106.84	111.55
3	A	1357	YJA	CAI-CBF-CAM	-2.98	116.56	120.84
3	A	1357	YJA	OAC-CAN-CAR	-2.42	100.17	111.28
3	B	1357	YJA	OBA-CAQ-CAP	-2.34	99.33	108.39
3	A	1357	YJA	CBD-CAK-CBC	2.06	120.02	117.97
3	A	1357	YJA	NAY-C6-N1	2.09	120.83	118.85
3	A	1357	YJA	C2-N1-C6	2.21	118.07	116.48
3	A	1357	YJA	FAD-CBC-CAG	2.32	122.40	118.52
3	B	1357	YJA	CAJ-CAI-CBF	2.40	123.13	120.14
3	A	1357	YJA	C5-C6-NAY	2.57	121.87	119.63
3	A	1357	YJA	OAB-CBB-NAX	2.68	128.51	123.72
3	B	1357	YJA	CAM-C4-N3	2.72	120.96	117.95
3	A	1357	YJA	CAM-C4-C5	2.85	123.22	119.61
3	B	1357	YJA	CAM-C4-C5	3.01	123.42	119.61

Continued on next page...

Continued from previous page...

Mol	Chain	Res	Type	Atoms	Z	Observed(°)	Ideal(°)
3	B	1357	YJA	FAD-CBC-CAG	3.44	124.27	118.52
3	B	1357	YJA	CAQ-OBA-CBF	3.57	126.71	117.91
3	A	1357	YJA	CAR-NBK-CAS	3.87	120.73	111.45
3	A	1357	YJA	CBF-CAM-C4	4.26	121.67	119.14
3	B	1357	YJA	CBG-CAL-CBE	4.81	110.95	106.02
3	B	1357	YJA	CBD-CAK-CBC	5.61	123.53	117.97
3	B	1357	YJA	C2-N3-C4	6.65	121.33	115.19
3	B	1357	YJA	C6-C5-C4	6.81	119.65	115.77
3	A	1357	YJA	C6-C5-C4	7.55	120.07	115.77

There are no chirality outliers.

There are no torsion outliers.

There are no ring outliers.

2 monomers are involved in 18 short contacts:

Mol	Chain	Res	Type	Clashes	Symm-Clashes
3	A	1357	YJA	6	0
3	B	1357	YJA	12	0

5.7 Other polymers [i](#)

There are no such residues in this entry.

5.8 Polymer linkage issues [i](#)

There are no chain breaks in this entry.

6 Fit of model and data ⓘ

6.1 Protein, DNA and RNA chains ⓘ

In the following table, the column labelled ‘#RSRZ> 2’ contains the number (and percentage) of RSRZ outliers, followed by percent RSRZ outliers for the chain as percentile scores relative to all X-ray entries and entries of similar resolution. The OWAB column contains the minimum, median, 95th percentile and maximum values of the occupancy-weighted average B-factor per residue. The column labelled ‘Q< 0.9’ lists the number of (and percentage) of residues with an average occupancy less than 0.9.

Mol	Chain	Analysed	<RSRZ>	#RSRZ>2	OWAB(Å ²)	Q<0.9
1	A	270/285 (94%)	-0.06	6 (2%) 65 68	9, 17, 37, 66	0
1	B	280/285 (98%)	-0.02	19 (6%) 20 20	9, 17, 48, 91	0
2	C	41/44 (93%)	0.24	2 (4%) 33 34	19, 28, 44, 57	0
2	D	43/44 (97%)	1.11	11 (25%) 1 1	17, 36, 52, 67	0
All	All	634/658 (96%)	0.06	38 (5%) 25 26	9, 18, 48, 91	0

All (38) RSRZ outliers are listed below:

Mol	Chain	Res	Type	RSRZ
1	A	104	PHE	6.3
2	C	837	PHE	5.7
1	B	76	GLN	5.7
1	B	103	LYS	5.5
1	B	102	GLY	5.3
1	B	101	LYS	4.3
2	D	826	GLY	4.3
1	B	78	THR	4.1
2	D	827	THR	4.0
1	B	355	TYR	3.6
1	B	80	LEU	3.6
1	B	354	VAL	3.6
1	B	77	ASN	3.5
1	A	357	SER	3.5
1	B	129	LEU	3.4
2	D	798	ILE	3.4
2	D	837	PHE	3.3
1	B	79	ALA	3.3
1	B	131	LYS	3.2
1	B	104	PHE	3.1
2	D	823	ARG	3.0

Continued on next page...

Continued from previous page...

Mol	Chain	Res	Type	RSRZ
2	D	828	ILE	3.0
2	D	819	ILE	2.9
2	D	800	ALA	2.8
1	B	105	GLY	2.8
1	B	163	ARG	2.8
2	D	829	ASP	2.7
1	A	101	LYS	2.7
2	C	834	GLU	2.6
1	A	244	LEU	2.6
1	B	136	HIS	2.6
1	A	243	SER	2.5
1	A	355	TYR	2.5
1	B	130	GLU	2.3
2	D	822	ASP	2.3
1	B	127	SER	2.3
2	D	804	GLY	2.1
1	B	356	GLN	2.1

6.2 Non-standard residues in protein, DNA, RNA chains ⓘ

In the following table, the Atoms column lists the number of modelled atoms in the group and the number defined in the chemical component dictionary. LLDF column lists the quality of electron density of the group with respect to its neighbouring residues in protein, DNA or RNA chains. The B-factors column lists the minimum, median, 95th percentile and maximum values of B factors of atoms in the group. The column labelled 'Q< 0.9' lists the number of atoms with occupancy less than 0.9.

Mol	Type	Chain	Res	Atoms	RSCC	RSR	LLDF	B-factors(Å ²)	Q<0.9
1	TPO	B	248	11/12	0.99	0.05	-	14,16,17,18	0
1	TPO	A	248	11/12	0.98	0.05	-	15,16,17,18	0

6.3 Carbohydrates ⓘ

There are no carbohydrates in this entry.

6.4 Ligands ⓘ

In the following table, the Atoms column lists the number of modelled atoms in the group and the number defined in the chemical component dictionary. LLDF column lists the quality of electron density of the group with respect to its neighbouring residues in protein, DNA or RNA chains. The B-factors column lists the minimum, median, 95th percentile and maximum values of B factors

of atoms in the group. The column labelled 'Q< 0.9' lists the number of atoms with occupancy less than 0.9.

Mol	Type	Chain	Res	Atoms	RSCC	RSR	LLDF	B-factors(\AA^2)	Q<0.9
3	YJA	B	1357	37/37	0.79	0.26	6.99	19,38,63,65	0
3	YJA	A	1357	37/37	0.89	0.18	2.15	18,28,61,70	0

6.5 Other polymers ⓘ

There are no such residues in this entry.