



Full wwPDB X-ray Structure Validation Report ⓘ

Feb 1, 2016 – 01:14 AM GMT

PDB ID : 2C66
Title : MAO INHIBITION BY RASAGILINE ANALOGUES
Authors : Binda, C.; Hubalek, F.; Li, M.; Herzig, Y.; Sterling, J.; Edmondson, D.E.;
Mattevi, A.
Deposited on : 2005-11-07
Resolution : 2.50 Å(reported)

This is a Full wwPDB X-ray Structure Validation Report for a publicly released PDB entry.
We welcome your comments at validation@mail.wwpdb.org
A user guide is available at
<http://wwpdb.org/validation/2016/XrayValidationReportHelp>
with specific help available everywhere you see the ⓘ symbol.

The following versions of software and data (see [references ⓘ](#)) were used in the production of this report:

MolProbity : 4.02b-467
Mogul : 1.7 (RC4), CSD as536be (2015)
Xtriage (Phenix) : 1.9-1692
EDS : rb-20026688
Percentile statistics : 20151230.v01 (using entries in the PDB archive December 30th 2015)
Refmac : 5.8.0135
CCP4 : 6.5.0
Ideal geometry (proteins) : Engh & Huber (2001)
Ideal geometry (DNA, RNA) : Parkinson et al. (1996)
Validation Pipeline (wwPDB-VP) : trunk26865

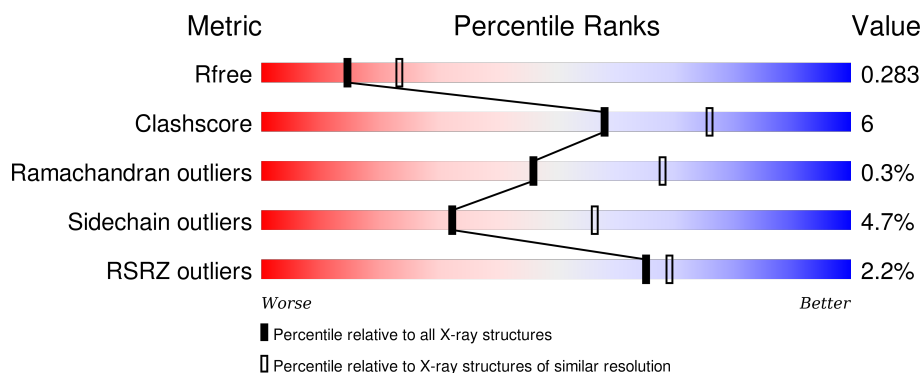
1 Overall quality at a glance

The following experimental techniques were used to determine the structure:

X-RAY DIFFRACTION

The reported resolution of this entry is 2.50 Å.

Percentile scores (ranging between 0-100) for global validation metrics of the entry are shown in the following graphic. The table shows the number of entries on which the scores are based.



Metric	Whole archive (#Entries)	Similar resolution (#Entries, resolution range(Å))
R_{free}	91344	3553 (2.50-2.50)
Clashscore	102246	4242 (2.50-2.50)
Ramachandran outliers	100387	4156 (2.50-2.50)
Sidechain outliers	100360	4158 (2.50-2.50)
RSRZ outliers	91569	3562 (2.50-2.50)

The table below summarises the geometric issues observed across the polymeric chains and their fit to the electron density. The red, orange, yellow and green segments on the lower bar indicate the fraction of residues that contain outliers for ≥ 3 , 2, 1 and 0 types of geometric quality criteria. A grey segment represents the fraction of residues that are not modelled. The numeric value for each fraction is indicated below the corresponding segment, with a dot representing fractions $\leq 5\%$. The upper red bar (where present) indicates the fraction of residues that have poor fit to the electron density. The numeric value is given above the bar.

Mol	Chain	Length	Quality of chain
1	A	520	<div> <div style="width: 100%; height: 10px; position: relative;"> <div style="position: absolute; top: -10px; left: 0; width: 100%; height: 1px; background-color: red;"></div> <div style="position: absolute; bottom: 0; left: 0; width: 100%; height: 10px; background-color: green;"></div> <div style="position: absolute; bottom: 0; left: 79%; width: 16%; height: 10px; background-color: yellow;"></div> <div style="position: absolute; bottom: 0; left: 95%; width: 5%; height: 10px; background-color: grey;"></div> </div> <div>79% 16% • •</div> </div>
1	B	520	<div> <div style="width: 100%; height: 10px; position: relative;"> <div style="position: absolute; top: -10px; left: 0; width: 100%; height: 1px; background-color: red;"></div> <div style="position: absolute; bottom: 0; left: 0; width: 100%; height: 10px; background-color: green;"></div> <div style="position: absolute; bottom: 0; left: 78%; width: 16%; height: 10px; background-color: yellow;"></div> <div style="position: absolute; bottom: 0; left: 94%; width: 5%; height: 10px; background-color: grey;"></div> </div> <div>3% 78% 16% • 5%</div> </div>

2 Entry composition [i](#)

There are 4 unique types of molecules in this entry. The entry contains 8234 atoms, of which 0 are hydrogens and 0 are deuteriums.

In the tables below, the ZeroOcc column contains the number of atoms modelled with zero occupancy, the AltConf column contains the number of residues with at least one atom in alternate conformation and the Trace column contains the number of residues modelled with at most 2 atoms.

- Molecule 1 is a protein called AMINE OXIDASE (FLAVIN-CONTAINING) B.

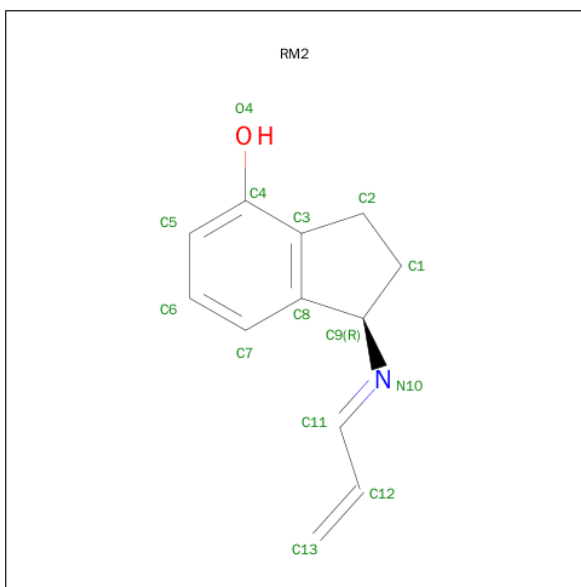
Mol	Chain	Residues	Atoms					ZeroOcc	AltConf	Trace
1	A	499	Total	C	N	O	S	0	0	0
			3971	2538	681	728	24			
1	B	494	Total	C	N	O	S	0	0	0
			3940	2519	676	721	24			

- Molecule 2 is FLAVIN-ADENINE DINUCLEOTIDE (three-letter code: FAD) (formula: $C_{27}H_{33}N_9O_{15}P_2$).



Mol	Chain	Residues	Atoms					ZeroOcc	AltConf
2	A	1	Total	C	N	O	P	0	0
			53	27	9	15	2		
2	B	1	Total	C	N	O	P	0	0
			53	27	9	15	2		

- Molecule 3 is 4-HYDROXY-N-PROPARGYL-1(R)-AMINOINDAN (three-letter code: RM2) (formula: $C_{12}H_{13}NO$).



Mol	Chain	Residues	Atoms				ZeroOcc	AltConf
3	A	1	Total	C	N	O	0	0
			14	12	1	1		
3	B	1	Total	C	N	O	0	0
			14	12	1	1		

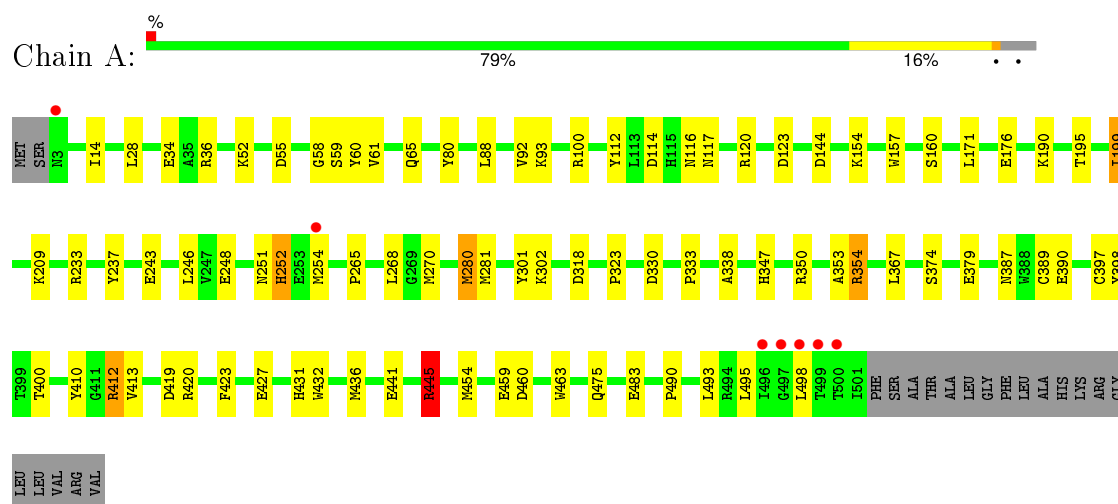
- Molecule 4 is water.

Mol	Chain	Residues	Atoms		ZeroOcc	AltConf
4	A	86	Total	O	0	0
			86	86		
4	B	103	Total	O	0	0
			103	103		

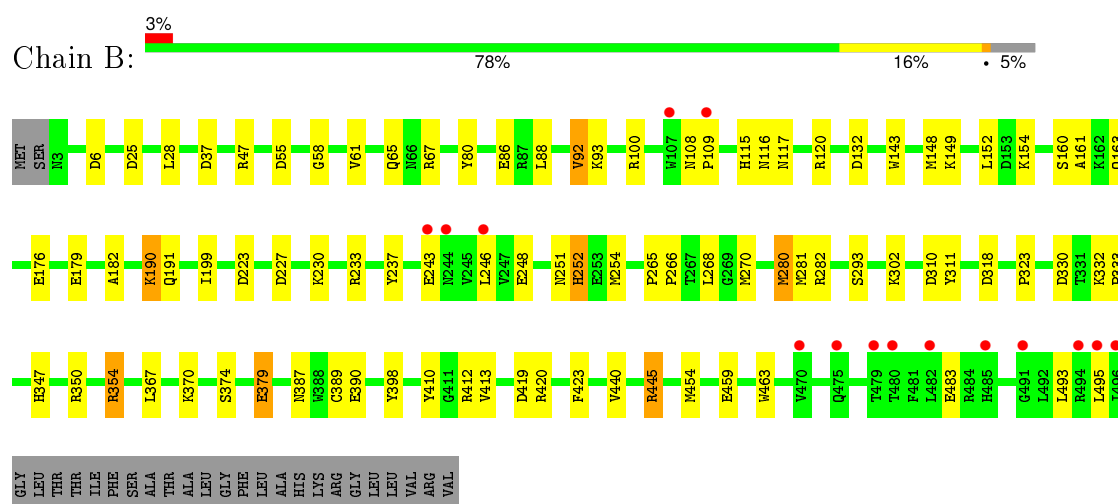
3 Residue-property plots [i](#)

These plots are drawn for all protein, RNA and DNA chains in the entry. The first graphic for a chain summarises the proportions of errors displayed in the second graphic. The second graphic shows the sequence view annotated by issues in geometry and electron density. Residues are color-coded according to the number of geometric quality criteria for which they contain at least one outlier: green = 0, yellow = 1, orange = 2 and red = 3 or more. A red dot above a residue indicates a poor fit to the electron density ($\text{RSRZ} > 2$). Stretches of 2 or more consecutive residues without any outlier are shown as a green connector. Residues present in the sample, but not in the model, are shown in grey.

• Molecule 1: AMINE OXIDASE (FLAVIN-CONTAINING) B



• Molecule 1: AMINE OXIDASE (FLAVIN-CONTAINING) B



4 Data and refinement statistics

Property	Value	Source
Space group	C 2 2 2	Depositor
Cell constants a, b, c, α , β , γ	132.48Å 223.22Å 86.27Å 90.00° 90.00° 90.00°	Depositor
Resolution (Å)	15.00 – 2.50 40.34 – 2.50	Depositor EDS
% Data completeness (in resolution range)	92.8 (15.00-2.50) 92.7 (40.34-2.50)	Depositor EDS
R_{merge}	0.14	Depositor
R_{sym}	(Not available)	Depositor
$\langle I/\sigma(I) \rangle$ ¹	1.90 (at 2.51Å)	Xtriage
Refinement program	REFMAC 5.1.24	Depositor
R, R_{free}	0.215 , 0.285 0.214 , 0.283	Depositor DCC
R_{free} test set	1048 reflections (2.61%)	DCC
Wilson B-factor (Å ²)	24.1	Xtriage
Anisotropy	0.966	Xtriage
Bulk solvent k_{sol} (e/Å ³), B_{sol} (Å ²)	0.36 , 35.1	EDS
Estimated twinning fraction	0.001 for 1/2*h-1/2*k,-3/2*h-1/2*k,-l 0.015 for 1/2*h+1/2*k,3/2*h-1/2*k,-l	Xtriage
L-test for twinning ²	$\langle L \rangle = 0.49$, $\langle L^2 \rangle = 0.32$	Xtriage
Outliers	0 of 41389 reflections	Xtriage
F_o, F_c correlation	0.91	EDS
Total number of atoms	8234	wwPDB-VP
Average B, all atoms (Å ²)	22.0	wwPDB-VP

Xtriage's analysis on translational NCS is as follows: *The largest off-origin peak in the Patterson function is 3.92% of the height of the origin peak. No significant pseudotranslation is detected.*

¹Intensities estimated from amplitudes.

²Theoretical values of $\langle |L| \rangle$, $\langle L^2 \rangle$ for acentric reflections are 0.5, 0.375 respectively for untwinned datasets, and 0.333, 0.2 for perfectly twinned datasets.

5 Model quality [i](#)

5.1 Standard geometry [i](#)

Bond lengths and bond angles in the following residue types are not validated in this section: RM2, FAD

The Z score for a bond length (or angle) is the number of standard deviations the observed value is removed from the expected value. A bond length (or angle) with $|Z| > 5$ is considered an outlier worth inspection. RMSZ is the root-mean-square of all Z scores of the bond lengths (or angles).

Mol	Chain	Bond lengths		Bond angles	
		RMSZ	$\# Z > 5$	RMSZ	$\# Z > 5$
1	A	0.87	0/4068	0.89	8/5522 (0.1%)
1	B	0.88	2/4037 (0.0%)	0.92	11/5479 (0.2%)
All	All	0.87	2/8105 (0.0%)	0.91	19/11001 (0.2%)

All (2) bond length outliers are listed below:

Mol	Chain	Res	Type	Atoms	Z	Observed(Å)	Ideal(Å)
1	B	163	GLN	CG-CD	5.54	1.63	1.51
1	B	92	VAL	CB-CG2	5.08	1.63	1.52

All (19) bond angle outliers are listed below:

Mol	Chain	Res	Type	Atoms	Z	Observed(°)	Ideal(°)
1	B	47	ARG	NE-CZ-NH1	8.29	124.44	120.30
1	B	132	ASP	CB-CG-OD2	6.81	124.43	118.30
1	A	445	ARG	NE-CZ-NH2	-6.72	116.94	120.30
1	A	330	ASP	CB-CG-OD2	6.65	124.28	118.30
1	A	419	ASP	CB-CG-OD2	6.55	124.19	118.30
1	B	419	ASP	CB-CG-OD2	6.15	123.84	118.30
1	B	47	ARG	NE-CZ-NH2	-6.11	117.25	120.30
1	A	55	ASP	CB-CG-OD2	6.11	123.80	118.30
1	B	310	ASP	CB-CG-OD1	6.06	123.76	118.30
1	A	445	ARG	NE-CZ-NH1	5.87	123.24	120.30
1	B	6	ASP	CB-CG-OD2	5.76	123.49	118.30
1	B	223	ASP	CB-CG-OD2	5.64	123.38	118.30
1	A	144	ASP	CB-CG-OD2	5.64	123.38	118.30
1	A	123	ASP	CB-CG-OD2	5.55	123.29	118.30
1	A	114	ASP	CB-CG-OD2	5.49	123.24	118.30
1	B	55	ASP	CB-CG-OD2	5.35	123.11	118.30
1	B	25	ASP	CB-CG-OD2	5.30	123.07	118.30

Continued on next page...

Continued from previous page...

Mol	Chain	Res	Type	Atoms	Z	Observed(°)	Ideal(°)
1	B	37	ASP	CB-CG-OD2	5.05	122.84	118.30
1	B	330	ASP	CB-CG-OD2	5.03	122.83	118.30

There are no chirality outliers.

There are no planarity outliers.

5.2 Too-close contacts ⓘ

In the following table, the Non-H and H(model) columns list the number of non-hydrogen atoms and hydrogen atoms in the chain respectively. The H(added) column lists the number of hydrogen atoms added and optimized by MolProbity. The Clashes column lists the number of clashes within the asymmetric unit, whereas Symm-Clashes lists symmetry related clashes.

Mol	Chain	Non-H	H(model)	H(added)	Clashes	Symm-Clashes
1	A	3971	0	3967	46	1
1	B	3940	0	3937	52	0
2	A	53	0	29	4	0
2	B	53	0	29	3	0
3	A	14	0	11	3	0
3	B	14	0	11	3	0
4	A	86	0	0	3	0
4	B	103	0	0	6	0
All	All	8234	0	7984	95	1

The all-atom clashscore is defined as the number of clashes found per 1000 atoms (including hydrogen atoms). The all-atom clashscore for this structure is 6.

All (95) close contacts within the same asymmetric unit are listed below, sorted by their clash magnitude.

Atom-1	Atom-2	Interatomic distance (Å)	Clash overlap (Å)
1:B:246:LEU:HB3	1:B:254:MET:HE1	1.56	0.87
1:B:379:GLU:HG3	4:B:2076:HOH:O	1.75	0.85
1:A:246:LEU:HB3	1:A:254:MET:HE1	1.58	0.84
1:B:117:ASN:HD22	1:B:120:ARG:HH21	1.38	0.69
1:B:370:LYS:NZ	4:B:2073:HOH:O	2.29	0.65
1:B:293:SER:HB3	1:B:389:CYS:SG	2.35	0.65
1:A:117:ASN:HD22	1:A:120:ARG:HH21	1.45	0.65
1:A:354:ARG:HG3	1:A:354:ARG:HH11	1.62	0.65
1:A:354:ARG:HG3	1:A:354:ARG:NH1	2.12	0.63
1:B:243:GLU:O	1:B:420:ARG:NH1	2.32	0.61

Continued on next page...

Continued from previous page...

Atom-1	Atom-2	Interatomic distance (Å)	Clash overlap (Å)
1:A:350:ARG:HD3	1:B:410:TYR:OH	2.00	0.61
1:B:28:LEU:HD11	1:B:454:MET:HE1	1.81	0.61
1:A:28:LEU:HD11	1:A:454:MET:HE1	1.84	0.60
1:B:227:ASP:O	1:B:230:LYS:NZ	2.33	0.60
1:B:282:ARG:HD2	4:B:2088:HOH:O	2.03	0.58
1:B:80:TYR:CG	1:B:333:PRO:HG3	2.40	0.57
1:A:270:MET:HB3	1:B:270:MET:HB3	1.86	0.57
1:B:445:ARG:HD2	1:B:463:TRP:CZ2	2.40	0.57
1:B:281:MET:HB3	1:B:413:VAL:HG21	1.89	0.55
1:B:117:ASN:HD22	1:B:120:ARG:NH2	2.05	0.55
1:A:171:LEU:HD21	3:A:1503:RM2:H2C1	1.90	0.54
1:A:445:ARG:HD2	1:A:463:TRP:CZ2	2.42	0.54
1:A:61:VAL:HA	1:A:65:GLN:OE1	2.08	0.54
1:A:354:ARG:HH11	1:A:354:ARG:CG	2.20	0.54
1:B:190:LYS:HG3	1:B:191:GLN:N	2.21	0.53
1:B:354:ARG:HG3	1:B:354:ARG:NH1	2.23	0.53
1:A:243:GLU:O	1:A:420:ARG:NH1	2.42	0.52
1:A:195:THR:O	1:A:199:ILE:HG23	2.09	0.52
1:A:387:ASN:O	1:A:390:GLU:HG2	2.10	0.52
1:A:323:PRO:HD2	1:A:367:LEU:HD22	1.91	0.52
1:B:251:ASN:O	1:B:252:HIS:HB2	2.10	0.51
1:B:398:TYR:CZ	3:B:1498:RM2:H11	2.46	0.51
1:A:251:ASN:O	1:A:252:HIS:HB2	2.11	0.51
1:B:354:ARG:HG3	1:B:354:ARG:HH11	1.75	0.51
1:B:115:HIS:CD2	1:B:161:ALA:HB2	2.46	0.51
2:B:1497:FAD:O4	3:B:1498:RM2:H12	2.12	0.50
1:B:58:GLY:HA2	2:B:1497:FAD:C4X	2.42	0.49
1:B:387:ASN:O	1:B:390:GLU:HG2	2.12	0.49
1:A:58:GLY:HA2	2:A:1502:FAD:C4X	2.43	0.49
1:A:14:ILE:HD12	1:A:436:MET:HG2	1.95	0.49
1:B:266:PRO:HD3	4:B:2092:HOH:O	2.13	0.48
1:B:190:LYS:NZ	4:B:2046:HOH:O	2.36	0.48
1:B:445:ARG:HD2	1:B:463:TRP:CH2	2.49	0.47
1:A:59:SER:H	2:A:1502:FAD:C4	2.27	0.47
1:A:117:ASN:HD22	1:A:120:ARG:NH2	2.09	0.47
1:A:60:TYR:CE2	1:A:209:LYS:HD3	2.49	0.47
1:B:233:ARG:HG3	1:B:251:ASN:HD21	1.80	0.47
1:A:280:MET:HB3	1:A:280:MET:HE3	1.74	0.47
1:B:143:TRP:O	1:B:182:ALA:HB3	2.16	0.46
1:A:398:TYR:CZ	3:A:1503:RM2:H11	2.51	0.46
1:B:323:PRO:HD2	1:B:367:LEU:HD22	1.98	0.46

Continued on next page...

Continued from previous page...

Atom-1	Atom-2	Interatomic distance (Å)	Clash overlap (Å)
2:A:1502:FAD:O4	3:A:1503:RM2:H12	2.16	0.46
1:A:281:MET:HB3	1:A:413:VAL:HG21	1.96	0.46
1:A:233:ARG:HG3	1:A:251:ASN:HD21	1.81	0.45
1:A:445:ARG:HD2	1:A:463:TRP:CH2	2.51	0.45
1:B:61:VAL:HA	1:B:65:GLN:OE1	2.17	0.45
1:A:353:ALA:HB1	1:B:280:MET:HE1	1.98	0.45
1:B:176:GLU:HB2	1:B:179:GLU:HG3	1.99	0.45
1:A:281:MET:HB2	4:A:2046:HOH:O	2.17	0.45
1:A:389:CYS:CB	1:B:280:MET:HG3	2.46	0.45
1:B:423:PHE:O	1:B:445:ARG:NH2	2.37	0.45
1:A:34:GLU:OE2	1:A:36:ARG:HB2	2.17	0.45
1:A:80:TYR:CG	1:A:333:PRO:HG3	2.52	0.44
1:A:265:PRO:HB2	1:A:268:LEU:HG	2.00	0.44
1:B:88:LEU:N	1:B:88:LEU:HD12	2.32	0.44
1:A:116:ASN:ND2	1:A:483:GLU:HG2	2.32	0.43
1:A:410:TYR:OH	1:B:350:ARG:HD3	2.18	0.43
1:A:423:PHE:O	1:A:445:ARG:NH2	2.39	0.43
1:A:301:TYR:O	1:A:338:ALA:HB3	2.18	0.43
2:B:1497:FAD:C4	3:B:1498:RM2:H12	2.48	0.43
1:B:176:GLU:OE2	1:B:347:HIS:ND1	2.46	0.42
1:A:412:ARG:HG2	4:A:2073:HOH:O	2.18	0.42
1:B:148:MET:O	1:B:152:LEU:HG	2.19	0.42
1:A:176:GLU:OE2	1:A:347:HIS:ND1	2.43	0.42
1:B:265:PRO:HB2	1:B:268:LEU:HG	2.01	0.42
1:B:117:ASN:ND2	1:B:120:ARG:HH21	2.12	0.42
1:B:398:TYR:N	4:B:2082:HOH:O	2.47	0.42
1:A:431:HIS:O	1:A:432:TRP:HB2	2.19	0.42
1:B:237:TYR:HB3	1:B:248:GLU:HB3	2.01	0.42
2:A:1502:FAD:H9	2:A:1502:FAD:H1'1	1.78	0.42
1:B:280:MET:HB2	1:B:280:MET:HE2	1.71	0.41
1:A:112:TYR:C	1:A:112:TYR:CD1	2.93	0.41
1:A:157:TRP:CE2	1:A:490:PRO:HD3	2.55	0.41
1:A:270:MET:HB3	1:B:270:MET:CB	2.50	0.41
1:A:88:LEU:HD12	1:A:88:LEU:N	2.36	0.41
1:B:67:ARG:HB3	1:B:440:VAL:CG1	2.51	0.41
1:A:400:THR:HB	1:A:427:GLU:HG2	2.03	0.41
1:B:108:ASN:HA	1:B:109:PRO:HD3	1.88	0.41
1:B:86:GLU:HB2	1:B:311:TYR:C	2.41	0.41
1:A:389:CYS:HB3	1:B:280:MET:HG3	2.03	0.40
1:B:332:LYS:HB3	1:B:333:PRO:HD2	2.03	0.40
1:A:237:TYR:HB3	1:A:248:GLU:HB3	2.03	0.40

Continued on next page...

Continued from previous page...

Atom-1	Atom-2	Interatomic distance (Å)	Clash overlap (Å)
4:A:2028:HOH:O	1:B:149:LYS:HG2	2.21	0.40
1:B:108:ASN:OD1	1:B:108:ASN:C	2.60	0.40
1:B:116:ASN:ND2	1:B:483:GLU:HG2	2.37	0.40

All (1) symmetry-related close contacts are listed below. The label for Atom-2 includes the symmetry operator and encoded unit-cell translations to be applied.

Atom-1	Atom-2	Interatomic distance (Å)	Clash overlap (Å)
1:A:475:GLN:NE2	1:A:475:GLN:NE2[3_656]	2.14	0.06

5.3 Torsion angles [i](#)

5.3.1 Protein backbone [i](#)

In the following table, the Percentiles column shows the percent Ramachandran outliers of the chain as a percentile score with respect to all X-ray entries followed by that with respect to entries of similar resolution.

The Analysed column shows the number of residues for which the backbone conformation was analysed, and the total number of residues.

Mol	Chain	Analysed	Favoured	Allowed	Outliers	Percentiles	
1	A	497/520 (96%)	481 (97%)	14 (3%)	2 (0%)	39	61
1	B	492/520 (95%)	478 (97%)	13 (3%)	1 (0%)	52	75
All	All	989/1040 (95%)	959 (97%)	27 (3%)	3 (0%)	46	68

All (3) Ramachandran outliers are listed below:

Mol	Chain	Res	Type
1	A	52	LYS
1	A	252	HIS
1	B	252	HIS

5.3.2 Protein sidechains [i](#)

In the following table, the Percentiles column shows the percent sidechain outliers of the chain as a percentile score with respect to all X-ray entries followed by that with respect to entries of similar resolution.

The Analysed column shows the number of residues for which the sidechain conformation was analysed, and the total number of residues.

Mol	Chain	Analysed	Rotameric	Outliers	Percentiles	
1	A	427/444 (96%)	405 (95%)	22 (5%)	29	51
1	B	424/444 (96%)	406 (96%)	18 (4%)	36	62
All	All	851/888 (96%)	811 (95%)	40 (5%)	32	56

All (40) residues with a non-rotameric sidechain are listed below:

Mol	Chain	Res	Type
1	A	92	VAL
1	A	93	LYS
1	A	100	ARG
1	A	154	LYS
1	A	160	SER
1	A	190	LYS
1	A	199	ILE
1	A	280	MET
1	A	302	LYS
1	A	318	ASP
1	A	354	ARG
1	A	374	SER
1	A	379	GLU
1	A	397	CYS
1	A	412	ARG
1	A	441	GLU
1	A	445	ARG
1	A	459	GLU
1	A	460	ASP
1	A	493	LEU
1	A	495	LEU
1	A	498	LEU
1	B	92	VAL
1	B	93	LYS
1	B	100	ARG
1	B	154	LYS
1	B	160	SER
1	B	190	LYS
1	B	199	ILE
1	B	280	MET
1	B	302	LYS
1	B	318	ASP
1	B	354	ARG

Continued on next page...

Continued from previous page...

Mol	Chain	Res	Type
1	B	374	SER
1	B	379	GLU
1	B	412	ARG
1	B	445	ARG
1	B	459	GLU
1	B	493	LEU
1	B	495	LEU

Some sidechains can be flipped to improve hydrogen bonding and reduce clashes. All (9) such sidechains are listed below:

Mol	Chain	Res	Type
1	A	116	ASN
1	A	117	ASN
1	A	170	ASN
1	A	251	ASN
1	A	452	HIS
1	B	116	ASN
1	B	117	ASN
1	B	251	ASN
1	B	464	GLN

5.3.3 RNA [i](#)

There are no RNA molecules in this entry.

5.4 Non-standard residues in protein, DNA, RNA chains [i](#)

There are no non-standard protein/DNA/RNA residues in this entry.

5.5 Carbohydrates [i](#)

There are no carbohydrates in this entry.

5.6 Ligand geometry [i](#)

4 ligands are modelled in this entry.

In the following table, the Counts columns list the number of bonds (or angles) for which Mogul statistics could be retrieved, the number of bonds (or angles) that are observed in the model and

the number of bonds (or angles) that are defined in the chemical component dictionary. The Link column lists molecule types, if any, to which the group is linked. The Z score for a bond length (or angle) is the number of standard deviations the observed value is removed from the expected value. A bond length (or angle) with $|Z| > 2$ is considered an outlier worth inspection. RMSZ is the root-mean-square of all Z scores of the bond lengths (or angles).

Mol	Type	Chain	Res	Link	Bond lengths			Bond angles		
					Counts	RMSZ	# Z > 2	Counts	RMSZ	# Z > 2
2	FAD	A	1502	1,3	48,58,58	1.37	8 (16%)	54,89,89	2.65	14 (25%)
3	RM2	A	1503	2	15,15,15	1.98	4 (26%)	12,20,20	1.74	3 (25%)
2	FAD	B	1497	1,3	48,58,58	1.56	7 (14%)	54,89,89	2.84	14 (25%)
3	RM2	B	1498	2	15,15,15	1.85	5 (33%)	12,20,20	2.27	5 (41%)

In the following table, the Chirals column lists the number of chiral outliers, the number of chiral centers analysed, the number of these observed in the model and the number defined in the chemical component dictionary. Similar counts are reported in the Torsion and Rings columns. '-' means no outliers of that kind were identified.

Mol	Type	Chain	Res	Link	Chirals	Torsions	Rings
2	FAD	A	1502	1,3	-	0/30/50/50	0/6/6/6
3	RM2	A	1503	2	-	0/3/13/13	0/2/2/2
2	FAD	B	1497	1,3	-	0/30/50/50	0/6/6/6
3	RM2	B	1498	2	-	0/3/13/13	0/2/2/2

All (24) bond length outliers are listed below:

Mol	Chain	Res	Type	Atoms	Z	Observed(Å)	Ideal(Å)
3	A	1503	RM2	C3-C8	-4.52	1.33	1.38
3	A	1503	RM2	C7-C8	-3.89	1.34	1.39
3	B	1498	RM2	C3-C8	-3.18	1.35	1.38
3	B	1498	RM2	C7-C8	-3.16	1.35	1.39
3	A	1503	RM2	C6-C5	-2.52	1.33	1.38
3	B	1498	RM2	C4-C3	-2.48	1.34	1.40
2	B	1497	FAD	O4B-C4B	-2.39	1.39	1.45
3	A	1503	RM2	C5-C4	-2.02	1.35	1.39
3	B	1498	RM2	C5-C4	-2.01	1.35	1.39
2	A	1502	FAD	C5'-C4'	2.07	1.54	1.51
2	B	1497	FAD	C10-N1	2.18	1.39	1.35
2	A	1502	FAD	C4X-N5	2.43	1.37	1.33
2	A	1502	FAD	C4A-N3A	2.61	1.39	1.35
2	A	1502	FAD	C2A-N3A	2.75	1.37	1.32
2	B	1497	FAD	C2A-N1A	2.98	1.39	1.33
2	A	1502	FAD	C1'-N10	2.98	1.51	1.48
3	B	1498	RM2	C11-N10	3.05	1.30	1.27

Continued on next page...

Continued from previous page...

Mol	Chain	Res	Type	Atoms	Z	Observed(Å)	Ideal(Å)
2	A	1502	FAD	C4-N3	3.06	1.38	1.33
2	B	1497	FAD	C4X-N5	3.10	1.38	1.33
2	A	1502	FAD	C5X-N5	3.40	1.40	1.35
2	B	1497	FAD	C4-N3	3.87	1.40	1.33
2	A	1502	FAD	C2A-N1A	3.93	1.41	1.33
2	B	1497	FAD	C1'-N10	4.24	1.52	1.48
2	B	1497	FAD	C2A-N3A	4.28	1.39	1.32

All (36) bond angle outliers are listed below:

Mol	Chain	Res	Type	Atoms	Z	Observed(°)	Ideal(°)
2	B	1497	FAD	N3A-C2A-N1A	-15.26	117.21	128.89
2	A	1502	FAD	N3A-C2A-N1A	-13.36	118.67	128.89
2	B	1497	FAD	P-O3P-PA	-5.20	118.12	132.73
2	A	1502	FAD	P-O3P-PA	-4.94	118.87	132.73
2	A	1502	FAD	C9A-C5X-N5	-4.48	115.73	122.36
2	A	1502	FAD	C1B-N9A-C4A	-4.10	120.76	126.94
2	B	1497	FAD	C4X-C10-N10	-4.03	118.14	120.52
2	B	1497	FAD	C4X-C4-N3	-3.59	118.67	123.59
2	B	1497	FAD	C9A-C5X-N5	-3.50	117.18	122.36
3	B	1498	RM2	C6-C7-C8	-3.17	116.89	121.02
2	A	1502	FAD	C1'-N10-C9A	-3.10	115.38	118.86
3	B	1498	RM2	C5-C4-C3	-2.76	116.84	120.48
2	A	1502	FAD	C4X-C4-N3	-2.52	120.14	123.59
2	B	1497	FAD	C1'-N10-C9A	-2.37	116.20	118.86
2	A	1502	FAD	O3P-PA-O5B	-2.23	97.02	102.94
2	B	1497	FAD	C1B-N9A-C4A	-2.23	123.58	126.94
2	B	1497	FAD	O4'-C4'-C5'	2.06	114.68	110.19
3	B	1498	RM2	O4-C4-C3	2.19	122.91	117.83
2	A	1502	FAD	C2A-N1A-C6A	2.23	122.76	118.77
3	A	1503	RM2	C2-C1-C9	2.29	106.78	103.37
2	B	1497	FAD	C4-C4X-C10	2.35	121.45	119.94
3	A	1503	RM2	O4-C4-C3	2.45	123.52	117.83
2	A	1502	FAD	C4-N3-C2	2.65	117.54	115.25
2	B	1497	FAD	C2B-C1B-N9A	2.69	118.41	114.29
3	B	1498	RM2	C2-C1-C9	2.86	107.62	103.37
2	A	1502	FAD	C2B-C1B-N9A	2.86	118.67	114.29
2	A	1502	FAD	C5X-C9A-N10	2.96	119.87	117.62
2	B	1497	FAD	O2A-PA-O3P	3.01	118.76	105.09
2	B	1497	FAD	O3P-P-O5'	3.52	112.26	102.94
2	A	1502	FAD	C4-C4X-C10	3.64	122.27	119.94
2	A	1502	FAD	O3P-P-O5'	3.80	113.02	102.94

Continued on next page...

Continued from previous page...

Mol	Chain	Res	Type	Atoms	Z	Observed(°)	Ideal(°)
3	A	1503	RM2	C13-C12-C11	4.42	129.06	122.69
2	A	1502	FAD	C4X-N5-C5X	4.79	122.27	116.76
2	B	1497	FAD	C4X-N5-C5X	4.87	122.36	116.76
3	B	1498	RM2	C13-C12-C11	5.16	130.12	122.69
2	B	1497	FAD	C4-N3-C2	5.83	120.29	115.25

There are no chirality outliers.

There are no torsion outliers.

There are no ring outliers.

4 monomers are involved in 10 short contacts:

Mol	Chain	Res	Type	Clashes	Symm-Clashes
2	A	1502	FAD	4	0
3	A	1503	RM2	3	0
2	B	1497	FAD	3	0
3	B	1498	RM2	3	0

5.7 Other polymers [i](#)

There are no such residues in this entry.

5.8 Polymer linkage issues [i](#)

There are no chain breaks in this entry.

6 Fit of model and data ⓘ

6.1 Protein, DNA and RNA chains ⓘ

In the following table, the column labelled ‘#RSRZ> 2’ contains the number (and percentage) of RSRZ outliers, followed by percent RSRZ outliers for the chain as percentile scores relative to all X-ray entries and entries of similar resolution. The OWAB column contains the minimum, median, 95th percentile and maximum values of the occupancy-weighted average B-factor per residue. The column labelled ‘Q< 0.9’ lists the number of (and percentage) of residues with an average occupancy less than 0.9.

Mol	Chain	Analysed	<RSRZ>	#RSRZ>2	OWAB(Å ²)	Q<0.9
1	A	499/520 (95%)	-0.16	7 (1%) 78 80	11, 20, 42, 71	0
1	B	494/520 (95%)	0.05	15 (3%) 54 59	11, 20, 40, 61	0
All	All	993/1040 (95%)	-0.06	22 (2%) 65 69	11, 20, 41, 71	0

All (22) RSRZ outliers are listed below:

Mol	Chain	Res	Type	RSRZ
1	B	495	LEU	5.0
1	A	498	LEU	3.9
1	B	494	ARG	3.5
1	B	496	ILE	3.5
1	B	107	TRP	3.1
1	B	243	GLU	2.8
1	B	479	THR	2.7
1	B	244	ASN	2.7
1	A	500	THR	2.6
1	A	497	GLY	2.5
1	B	485	HIS	2.4
1	B	470	VAL	2.4
1	B	246	LEU	2.3
1	B	482	LEU	2.3
1	A	3	ASN	2.3
1	B	480	THR	2.3
1	A	499	THR	2.3
1	B	109	PRO	2.2
1	B	491	GLY	2.2
1	A	254	MET	2.1
1	A	496	ILE	2.0
1	B	475	GLN	2.0

6.2 Non-standard residues in protein, DNA, RNA chains [i](#)

There are no non-standard protein/DNA/RNA residues in this entry.

6.3 Carbohydrates [i](#)

There are no carbohydrates in this entry.

6.4 Ligands [i](#)

In the following table, the Atoms column lists the number of modelled atoms in the group and the number defined in the chemical component dictionary. LLDF column lists the quality of electron density of the group with respect to its neighbouring residues in protein, DNA or RNA chains. The B-factors column lists the minimum, median, 95th percentile and maximum values of B factors of atoms in the group. The column labelled 'Q< 0.9' lists the number of atoms with occupancy less than 0.9.

Mol	Type	Chain	Res	Atoms	RSCC	RSR	LLDF	B-factors(\AA^2)	Q<0.9
3	RM2	B	1498	14/14	0.95	0.18	0.53	21,24,25,26	0
2	FAD	B	1497	53/53	0.97	0.16	-0.09	7,13,16,18	0
3	RM2	A	1503	14/14	0.95	0.12	-0.32	20,24,25,26	0
2	FAD	A	1502	53/53	0.97	0.11	-0.65	8,13,17,18	0

6.5 Other polymers [i](#)

There are no such residues in this entry.