



Full wwPDB X-ray Structure Validation Report ⓘ

Feb 1, 2016 – 01:15 AM GMT

PDB ID : 2C6T
Title : CRYSTAL STRUCTURE OF THE HUMAN CDK2 COMPLEXED WITH
THE TRIAZOLOPYRIMIDINE INHIBITOR
Authors : Richardson, C.M.; Dokurno, P.; Murray, J.B.; Surgenor, A.E.
Deposited on : 2005-11-11
Resolution : 2.61 Å(reported)

This is a Full wwPDB X-ray Structure Validation Report for a publicly released PDB entry.
We welcome your comments at validation@mail.wwpdb.org
A user guide is available at
<http://wwpdb.org/validation/2016/XrayValidationReportHelp>
with specific help available everywhere you see the ⓘ symbol.

The following versions of software and data (see [references ⓘ](#)) were used in the production of this report:

MolProbity : 4.02b-467
Mogul : 1.7 (RC4), CSD as536be (2015)
Xtriage (Phenix) : 1.9-1692
EDS : rb-20026688
Percentile statistics : 20151230.v01 (using entries in the PDB archive December 30th 2015)
Refmac : 5.8.0135
CCP4 : 6.5.0
Ideal geometry (proteins) : Engh & Huber (2001)
Ideal geometry (DNA, RNA) : Parkinson et al. (1996)
Validation Pipeline (wwPDB-VP) : trunk26865

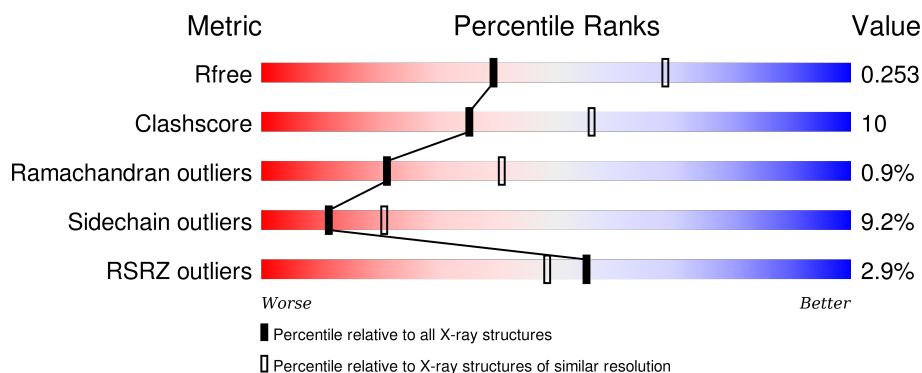
1 Overall quality at a glance ⓘ

The following experimental techniques were used to determine the structure:

X-RAY DIFFRACTION

The reported resolution of this entry is 2.61 Å.

Percentile scores (ranging between 0-100) for global validation metrics of the entry are shown in the following graphic. The table shows the number of entries on which the scores are based.



Metric	Whole archive (#Entries)	Similar resolution (#Entries, resolution range(Å))
R_{free}	91344	2700 (2.64-2.60)
Clashscore	102246	3065 (2.64-2.60)
Ramachandran outliers	100387	3015 (2.64-2.60)
Sidechain outliers	100360	3015 (2.64-2.60)
RSRZ outliers	91569	2706 (2.64-2.60)

The table below summarises the geometric issues observed across the polymeric chains and their fit to the electron density. The red, orange, yellow and green segments on the lower bar indicate the fraction of residues that contain outliers for ≥ 3 , 2, 1 and 0 types of geometric quality criteria. A grey segment represents the fraction of residues that are not modelled. The numeric value for each fraction is indicated below the corresponding segment, with a dot representing fractions $\leq 5\%$. The upper red bar (where present) indicates the fraction of residues that have poor fit to the electron density. The numeric value is given above the bar.

Mol	Chain	Length	Quality of chain
1	A	298	<div> <div>3%</div> <div>71% 22% 5% •</div> </div>
1	C	298	<div> <div>5%</div> <div>66% 27% 5% ••</div> </div>
2	B	258	<div> <div>%</div> <div>84% 15% •</div> </div>
2	D	258	<div> <div>2%</div> <div>82% 16% •</div> </div>

2 Entry composition [i](#)

There are 4 unique types of molecules in this entry. The entry contains 9341 atoms, of which 0 are hydrogens and 0 are deuteriums.

In the tables below, the ZeroOcc column contains the number of atoms modelled with zero occupancy, the AltConf column contains the number of residues with at least one atom in alternate conformation and the Trace column contains the number of residues modelled with at most 2 atoms.

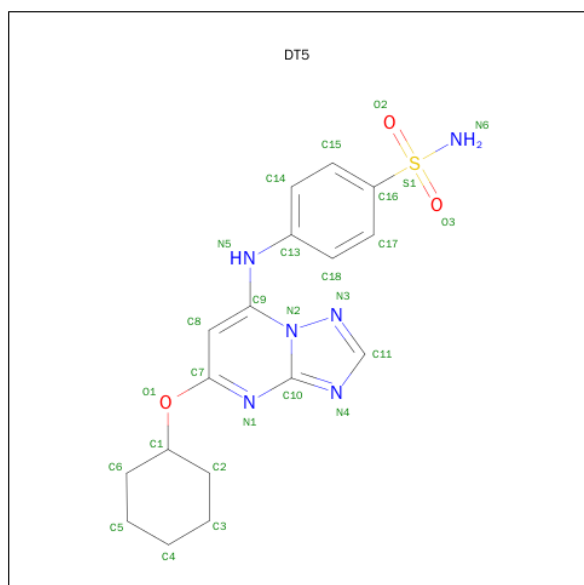
- Molecule 1 is a protein called CELL DIVISION PROTEIN KINASE 2.

Mol	Chain	Residues	Atoms						ZeroOcc	AltConf	Trace
1	A	296	Total	C	N	O	P	S	0	0	0
			2382	1547	403	423	1	8			
1	C	296	Total	C	N	O	P	S	0	0	0
			2382	1547	403	423	1	8			

- Molecule 2 is a protein called CYCLIN A2.

Mol	Chain	Residues	Atoms					ZeroOcc	AltConf	Trace
2	B	258	Total	C	N	O	S	0	0	0
			2083	1350	339	383	11			
2	D	258	Total	C	N	O	S	0	0	0
			2083	1350	339	383	11			

- Molecule 3 is 4-{{[5-(CYCLOHEXYLOXY)[1,2,4]TRIAZOLO[1,5-A]PYRIMIDIN-7-YL]AMINO}BENZENESULFONAMIDE (three-letter code: DT5) (formula: C₁₇H₂₀N₆O₃S).



Mol	Chain	Residues	Atoms					ZeroOcc	AltConf
3	A	1	Total	C	N	O	S	0	0
			27	17	6	3	1		
3	C	1	Total	C	N	O	S	0	0
			27	17	6	3	1		

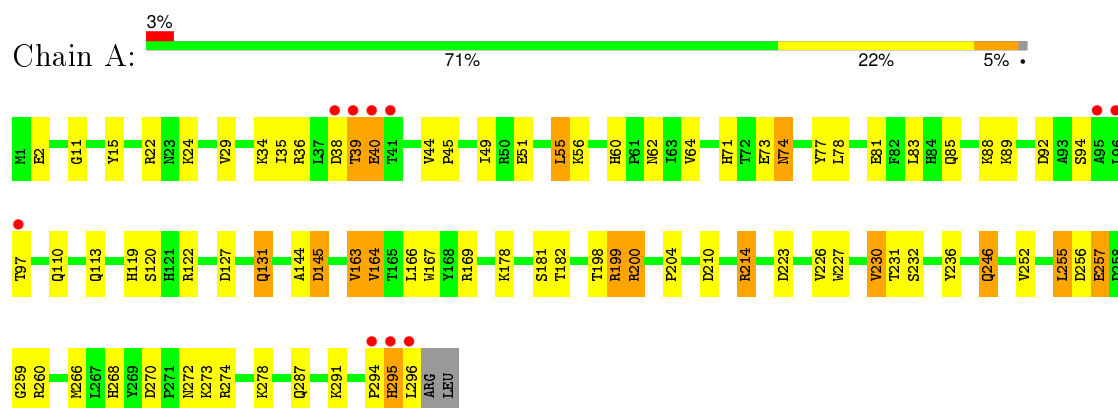
- Molecule 4 is water.

Mol	Chain	Residues	Atoms		ZeroOcc	AltConf
4	A	90	Total	O	0	0
			90	90		
4	B	98	Total	O	0	0
			98	98		
4	C	100	Total	O	0	0
			100	100		
4	D	69	Total	O	0	0
			69	69		

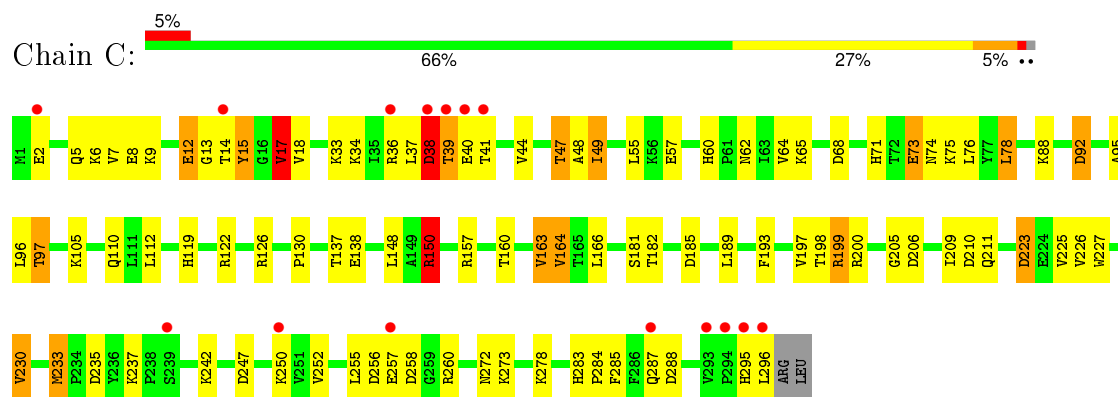
3 Residue-property plots [i](#)

These plots are drawn for all protein, RNA and DNA chains in the entry. The first graphic for a chain summarises the proportions of errors displayed in the second graphic. The second graphic shows the sequence view annotated by issues in geometry and electron density. Residues are color-coded according to the number of geometric quality criteria for which they contain at least one outlier: green = 0, yellow = 1, orange = 2 and red = 3 or more. A red dot above a residue indicates a poor fit to the electron density ($RSRZ > 2$). Stretches of 2 or more consecutive residues without any outlier are shown as a green connector. Residues present in the sample, but not in the model, are shown in grey.

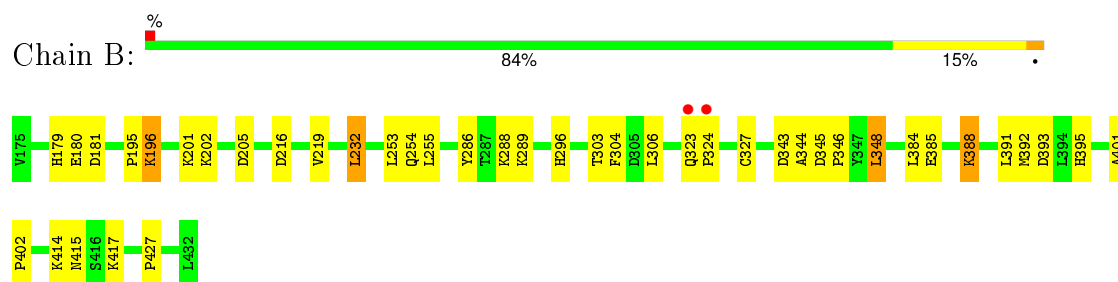
• Molecule 1: CELL DIVISION PROTEIN KINASE 2



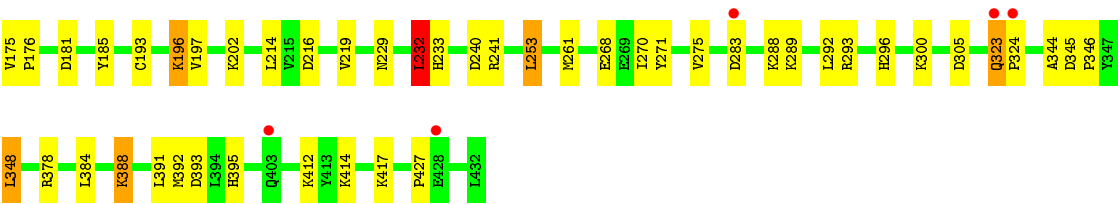
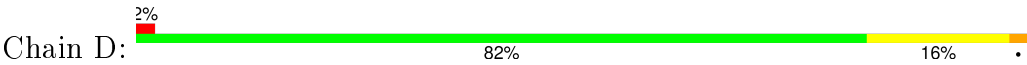
• Molecule 1: CELL DIVISION PROTEIN KINASE 2



• Molecule 2: CYCLIN A2



• Molecule 2: CYCLIN A2



4 Data and refinement statistics

Property	Value	Source
Space group	P 21 21 2	Depositor
Cell constants a, b, c, α , β , γ	160.42Å 161.34Å 66.22Å 90.00° 90.00° 90.00°	Depositor
Resolution (Å)	15.00 – 2.61 14.97 – 2.61	Depositor EDS
% Data completeness (in resolution range)	94.7 (15.00-2.61) 94.7 (14.97-2.61)	Depositor EDS
R_{merge}	0.18	Depositor
R_{sym}	(Not available)	Depositor
$\langle I/\sigma(I) \rangle$ ¹	1.78 (at 2.61Å)	Xtriage
Refinement program	REFMAC 5.1.24	Depositor
R, R_{free}	0.200 , 0.257 0.201 , 0.253	Depositor DCC
R_{free} test set	2556 reflections (5.37%)	DCC
Wilson B-factor (Å ²)	21.0	Xtriage
Anisotropy	0.042	Xtriage
Bulk solvent k_{sol} (e/Å ³), B_{sol} (Å ²)	0.37 , 45.3	EDS
Estimated twinning fraction	0.015 for k,h,-l	Xtriage
L-test for twinning ²	$\langle L \rangle = 0.49$, $\langle L^2 \rangle = 0.32$	Xtriage
Outliers	0 of 50178 reflections	Xtriage
F_o, F_c correlation	0.91	EDS
Total number of atoms	9341	wwPDB-VP
Average B, all atoms (Å ²)	28.0	wwPDB-VP

Xtriage's analysis on translational NCS is as follows: *The largest off-origin peak in the Patterson function is 4.11% of the height of the origin peak. No significant pseudotranslation is detected.*

¹Intensities estimated from amplitudes.

²Theoretical values of $\langle |L| \rangle$, $\langle L^2 \rangle$ for acentric reflections are 0.5, 0.375 respectively for untwinned datasets, and 0.333, 0.2 for perfectly twinned datasets.

5 Model quality

5.1 Standard geometry

Bond lengths and bond angles in the following residue types are not validated in this section: TPO, DT5

The Z score for a bond length (or angle) is the number of standard deviations the observed value is removed from the expected value. A bond length (or angle) with $|Z| > 5$ is considered an outlier worth inspection. RMSZ is the root-mean-square of all Z scores of the bond lengths (or angles).

Mol	Chain	Bond lengths		Bond angles	
		RMSZ	# $ Z > 5$	RMSZ	# $ Z > 5$
1	A	0.65	0/2432	0.84	7/3300 (0.2%)
1	C	0.66	0/2432	0.88	11/3300 (0.3%)
2	B	0.61	0/2133	0.78	5/2897 (0.2%)
2	D	0.61	0/2133	0.77	6/2897 (0.2%)
All	All	0.63	0/9130	0.82	29/12394 (0.2%)

There are no bond length outliers.

All (29) bond angle outliers are listed below:

Mol	Chain	Res	Type	Atoms	Z	Observed(°)	Ideal(°)
1	C	247	ASP	CB-CG-OD2	9.79	127.12	118.30
1	C	256	ASP	CB-CG-OD2	7.79	125.31	118.30
1	A	210	ASP	CB-CG-OD2	6.98	124.58	118.30
1	A	92	ASP	CB-CG-OD2	6.56	124.20	118.30
2	D	240	ASP	CB-CG-OD2	6.50	124.15	118.30
1	A	256	ASP	CB-CG-OD2	6.35	124.02	118.30
2	B	343	ASP	CB-CG-OD2	6.33	124.00	118.30
2	B	393	ASP	CB-CG-OD2	6.19	123.87	118.30
1	C	210	ASP	CB-CG-OD2	6.09	123.78	118.30
1	C	150	ARG	NE-CZ-NH2	-5.92	117.34	120.30
2	B	181	ASP	CB-CG-OD2	5.92	123.63	118.30
1	C	288	ASP	CB-CG-OD2	5.72	123.44	118.30
1	C	223	ASP	CB-CG-OD2	5.62	123.36	118.30
2	D	393	ASP	CB-CG-OD2	5.62	123.35	118.30
1	A	223	ASP	CB-CG-OD2	5.51	123.26	118.30
2	B	205	ASP	CB-CG-OD2	5.47	123.22	118.30
2	D	305	ASP	CB-CG-OD2	5.41	123.17	118.30
1	C	235	ASP	CB-CG-OD2	5.34	123.11	118.30
1	A	145	ASP	CB-CG-OD2	5.33	123.10	118.30
2	D	216	ASP	CB-CG-OD2	5.31	123.08	118.30

Continued on next page...

Continued from previous page...

Mol	Chain	Res	Type	Atoms	Z	Observed(°)	Ideal(°)
1	C	92	ASP	CB-CG-OD2	5.25	123.03	118.30
1	A	127	ASP	CB-CG-OD2	5.22	123.00	118.30
2	B	216	ASP	CB-CG-OD2	5.21	122.99	118.30
1	A	270	ASP	CB-CG-OD2	5.16	122.95	118.30
2	D	181	ASP	CB-CG-OD2	5.11	122.90	118.30
1	C	17	VAL	N-CA-C	5.11	124.79	111.00
2	D	232	LEU	CA-CB-CG	5.09	127.00	115.30
1	C	258	ASP	CB-CG-OD2	5.04	122.84	118.30
1	C	68	ASP	CB-CG-OD2	5.01	122.81	118.30

There are no chirality outliers.

There are no planarity outliers.

5.2 Too-close contacts ⓘ

In the following table, the Non-H and H(model) columns list the number of non-hydrogen atoms and hydrogen atoms in the chain respectively. The H(added) column lists the number of hydrogen atoms added and optimized by MolProbity. The Clashes column lists the number of clashes within the asymmetric unit, whereas Symm-Clashes lists symmetry related clashes.

Mol	Chain	Non-H	H(model)	H(added)	Clashes	Symm-Clashes
1	A	2382	0	2425	56	0
1	C	2382	0	2425	69	0
2	B	2083	0	2107	28	0
2	D	2083	0	2107	33	0
3	A	27	0	20	4	0
3	C	27	0	20	4	0
4	A	90	0	0	17	0
4	B	98	0	0	11	0
4	C	100	0	0	14	0
4	D	69	0	0	15	0
All	All	9341	0	9104	176	0

The all-atom clashscore is defined as the number of clashes found per 1000 atoms (including hydrogen atoms). The all-atom clashscore for this structure is 10.

All (176) close contacts within the same asymmetric unit are listed below, sorted by their clash magnitude.

Atom-1	Atom-2	Interatomic distance (Å)	Clash overlap (Å)
2:D:283:ASP:HB3	4:D:2036:HOH:O	1.48	1.09

Continued on next page...

Continued from previous page...

Atom-1	Atom-2	Interatomic distance (Å)	Clash overlap (Å)
1:C:160:TPO:HG22	2:D:270:ILE:HG23	1.23	1.08
1:A:39:THR:HA	4:A:2016:HOH:O	1.54	1.07
1:C:92:ASP:HB3	4:C:2036:HOH:O	1.57	1.04
2:D:323:GLN:HA	4:D:2049:HOH:O	1.68	0.93
1:C:199:ARG:HB3	4:C:2039:HOH:O	1.76	0.85
1:A:260:ARG:HD3	4:A:2079:HOH:O	1.76	0.84
1:A:74:ASN:H	1:A:74:ASN:HD22	1.26	0.82
2:B:327:CYS:HB3	4:D:2006:HOH:O	1.81	0.81
1:C:60:HIS:HD2	1:C:62:ASN:H	1.29	0.79
2:B:179:HIS:HD2	4:B:2056:HOH:O	1.65	0.79
1:A:273:LYS:HE2	1:C:272:ASN:O	1.83	0.78
1:C:60:HIS:CD2	1:C:62:ASN:H	2.00	0.78
2:B:179:HIS:CD2	4:B:2056:HOH:O	2.36	0.78
2:D:324:PRO:HA	4:D:2049:HOH:O	1.85	0.76
1:A:232:SER:HB2	4:D:2057:HOH:O	1.84	0.76
1:A:49:ILE:HG23	2:B:306:LEU:HD12	1.68	0.76
2:B:180:GLU:HG2	4:C:2084:HOH:O	1.86	0.76
1:A:85:GLN:HE21	1:A:89:LYS:HD3	1.51	0.75
1:C:198:THR:O	1:C:199:ARG:HG3	1.86	0.74
1:A:60:HIS:HD2	1:A:62:ASN:H	1.36	0.74
1:A:22:ARG:HD3	4:A:2010:HOH:O	1.88	0.73
2:B:415:ASN:HB3	4:B:2094:HOH:O	1.87	0.72
1:C:227:TRP:O	1:C:230:VAL:HG22	1.90	0.72
1:C:12:GLU:HB2	4:C:2006:HOH:O	1.89	0.71
1:A:60:HIS:CD2	1:A:62:ASN:H	2.08	0.70
1:C:160:TPO:HG22	2:D:270:ILE:CG2	2.14	0.69
1:C:105:LYS:HE2	1:C:285:PHE:O	1.93	0.69
1:C:160:TPO:CG2	2:D:270:ILE:HG23	2.14	0.68
1:A:272:ASN:O	1:C:273:LYS:HE2	1.94	0.68
2:D:261:MET:HE1	4:D:2024:HOH:O	1.92	0.67
1:C:278:LYS:HE3	4:D:2013:HOH:O	1.94	0.67
1:A:231:THR:HA	1:A:236:TYR:CD1	2.31	0.65
1:A:110:GLN:HA	1:A:113:GLN:HE21	1.62	0.64
1:C:181:SER:OG	1:C:182:THR:N	2.29	0.64
1:C:198:THR:O	1:C:199:ARG:CG	2.45	0.64
1:A:268:HIS:HD2	4:A:2073:HOH:O	1.81	0.64
1:A:119:HIS:HD2	4:B:2007:HOH:O	1.80	0.63
4:A:2030:HOH:O	2:B:304:PHE:HE2	1.81	0.63
1:A:227:TRP:CE3	1:A:230:VAL:CG1	2.81	0.63
2:D:233:HIS:HD2	4:D:2044:HOH:O	1.82	0.62
2:D:175:VAL:N	4:D:2008:HOH:O	2.31	0.62

Continued on next page...

Continued from previous page...

Atom-1	Atom-2	Interatomic distance (Å)	Clash overlap (Å)
3:C:1297:DT5:H8	3:C:1297:DT5:C18	2.31	0.60
1:C:150:ARG:NH2	2:D:268:GLU:O	2.29	0.60
2:D:219:VAL:HG22	2:D:232:LEU:HD11	1.84	0.59
1:C:160:TPO:O1P	2:D:270:ILE:HA	2.03	0.59
1:A:64:VAL:HB	4:A:2028:HOH:O	2.03	0.58
1:A:39:THR:O	4:A:2018:HOH:O	2.17	0.58
3:C:1297:DT5:C8	3:C:1297:DT5:C18	2.80	0.58
1:C:95:ALA:O	1:C:199:ARG:HG2	2.03	0.57
1:A:214:ARG:HG2	1:A:214:ARG:HH11	1.69	0.57
1:A:246:GLN:HG2	4:A:2078:HOH:O	2.04	0.56
1:C:205:GLY:HA3	1:C:211:GLN:OE1	2.04	0.56
3:C:1297:DT5:N1	3:C:1297:DT5:H6C2	2.20	0.56
1:C:41:THR:HA	2:D:288:LYS:NZ	2.21	0.56
1:C:97:THR:HB	4:C:2038:HOH:O	2.05	0.55
1:A:227:TRP:CD2	1:A:230:VAL:HG13	2.42	0.55
3:C:1297:DT5:C8	3:C:1297:DT5:H18	2.35	0.55
1:C:39:THR:HA	4:C:2018:HOH:O	2.07	0.55
2:D:229:ASN:OD1	2:D:412:LYS:NZ	2.39	0.55
1:C:193:PHE:O	1:C:197:VAL:HG23	2.07	0.55
2:B:385:GLU:OE2	4:B:2076:HOH:O	2.17	0.54
1:C:5:GLN:HE21	1:C:6:LYS:H	1.55	0.54
1:C:198:THR:O	1:C:199:ARG:HD2	2.08	0.54
1:C:44:VAL:HG12	1:C:49:ILE:HD12	1.89	0.53
1:C:283:HIS:ND1	1:C:284:PRO:HD2	2.23	0.53
1:C:40:GLU:C	2:D:288:LYS:HE2	2.30	0.53
1:C:223:ASP:OD1	1:C:225:VAL:HB	2.09	0.53
1:C:78:LEU:HD23	1:C:78:LEU:N	2.25	0.52
1:C:41:THR:HA	2:D:288:LYS:HZ3	1.74	0.52
2:D:288:LYS:NZ	4:D:2038:HOH:O	2.40	0.52
1:C:18:VAL:HG22	1:C:33:LYS:HG3	1.91	0.52
1:A:252:VAL:O	1:A:252:VAL:HG13	2.09	0.52
1:C:252:VAL:HG13	1:C:252:VAL:O	2.10	0.52
1:C:34:LYS:HD2	1:C:75:LYS:HE2	1.92	0.52
1:A:74:ASN:ND2	1:A:74:ASN:H	2.03	0.51
2:B:344:ALA:HB1	2:B:348:LEU:HD22	1.93	0.51
1:A:163:VAL:HG13	1:A:164:VAL:HG23	1.93	0.51
2:B:303:THR:HG22	4:B:2050:HOH:O	2.11	0.51
1:C:181:SER:HB3	4:C:2073:HOH:O	2.11	0.51
1:A:40:GLU:O	2:B:288:LYS:HE2	2.11	0.51
2:B:219:VAL:HG22	2:B:232:LEU:HD11	1.93	0.51
1:C:119:HIS:HD2	4:D:2010:HOH:O	1.94	0.51

Continued on next page...

Continued from previous page...

Atom-1	Atom-2	Interatomic distance (Å)	Clash overlap (Å)
1:C:62:ASN:ND2	1:C:110:GLN:HB3	2.27	0.50
2:D:214:LEU:HD22	2:D:253:LEU:HD22	1.94	0.50
2:D:388:LYS:HD2	4:D:2060:HOH:O	2.12	0.50
2:B:395:HIS:HE1	2:B:427:PRO:O	1.95	0.49
1:C:15:TYR:N	1:C:15:TYR:CD2	2.79	0.49
1:A:200:ARG:HB3	4:A:2063:HOH:O	2.12	0.49
2:D:344:ALA:HB1	2:D:348:LEU:HD22	1.94	0.49
1:C:15:TYR:HA	4:C:2007:HOH:O	2.11	0.49
1:C:71:HIS:CD2	1:C:76:LEU:HD13	2.47	0.49
1:A:88:LYS:HG2	4:A:2032:HOH:O	2.11	0.49
1:A:39:THR:C	4:A:2018:HOH:O	2.51	0.49
1:C:112:LEU:HD23	1:C:189:LEU:HD12	1.93	0.49
2:B:324:PRO:HB3	4:B:2058:HOH:O	2.11	0.49
1:C:88:LYS:HB2	1:C:130:PRO:HB2	1.95	0.49
1:A:231:THR:HA	1:A:236:TYR:CE1	2.48	0.49
1:C:138:GLU:HG2	4:C:2049:HOH:O	2.13	0.48
3:A:1297:DT5:C18	3:A:1297:DT5:C8	2.90	0.48
3:A:1297:DT5:C18	3:A:1297:DT5:H8	2.44	0.48
1:C:163:VAL:CG2	4:C:2054:HOH:O	2.60	0.48
2:B:324:PRO:CB	4:B:2058:HOH:O	2.61	0.47
1:C:14:THR:HG1	1:C:15:TYR:HD2	1.62	0.47
1:A:15:TYR:HE1	1:A:35:ILE:CD1	2.28	0.47
1:A:294:PRO:C	1:A:296:LEU:H	2.18	0.47
1:A:167:TRP:CD1	1:A:204:PRO:HA	2.50	0.47
1:C:198:THR:O	1:C:199:ARG:CD	2.63	0.46
1:C:163:VAL:HG13	1:C:164:VAL:HG23	1.97	0.46
1:C:227:TRP:CD2	1:C:230:VAL:HG13	2.51	0.46
1:A:88:LYS:HE3	1:A:131:GLN:NE2	2.30	0.46
2:D:395:HIS:HE1	2:D:427:PRO:O	1.99	0.46
1:C:157:ARG:NH1	2:D:268:GLU:OE2	2.46	0.46
1:C:230:VAL:HA	1:C:233:MET:HG3	1.97	0.45
2:B:195:PRO:HD3	4:B:2030:HOH:O	2.17	0.45
2:B:388:LYS:O	2:B:392:MET:HG2	2.17	0.45
1:C:227:TRP:CE3	1:C:230:VAL:HG13	2.51	0.45
2:D:196:LYS:HE2	2:D:196:LYS:HB3	1.69	0.45
2:D:176:PRO:HB2	4:D:2011:HOH:O	2.16	0.45
2:D:388:LYS:O	2:D:392:MET:HG2	2.16	0.45
1:A:246:GLN:CG	4:A:2078:HOH:O	2.65	0.44
2:D:271:TYR:HB3	4:D:2035:HOH:O	2.17	0.44
1:A:71:HIS:NE2	2:B:296:HIS:CD2	2.85	0.44
1:A:22:ARG:HG2	1:A:29:VAL:HG22	1.99	0.44

Continued on next page...

Continued from previous page...

Atom-1	Atom-2	Interatomic distance (Å)	Clash overlap (Å)
2:B:255:LEU:HB2	2:B:286:TYR:CZ	2.52	0.44
1:A:15:TYR:CE1	1:A:35:ILE:HG12	2.52	0.44
1:A:77:TYR:C	1:A:78:LEU:HD23	2.38	0.44
1:A:51:GLU:HG3	1:A:55:LEU:HD22	1.99	0.44
1:C:119:HIS:HE1	1:C:185:ASP:OD2	2.01	0.43
1:C:260:ARG:HD3	4:C:2090:HOH:O	2.17	0.43
1:C:15:TYR:CZ	1:C:47:THR:HG23	2.53	0.43
1:C:15:TYR:HE1	1:C:48:ALA:HB2	1.83	0.43
1:A:294:PRO:HB2	1:A:296:LEU:HG	2.00	0.43
2:D:345:ASP:HA	2:D:346:PRO:HA	1.82	0.43
2:B:254:GLN:HB3	2:B:286:TYR:OH	2.18	0.43
2:B:255:LEU:HB2	2:B:286:TYR:CE1	2.53	0.43
1:A:51:GLU:O	1:A:55:LEU:HB2	2.18	0.43
2:B:401:ALA:N	2:B:402:PRO:CD	2.81	0.43
2:D:275:VAL:HG21	2:D:292:LEU:HD21	2.01	0.43
3:A:1297:DT5:N1	3:A:1297:DT5:H6C2	2.34	0.42
1:A:44:VAL:HA	1:A:45:PRO:HD3	1.87	0.42
1:C:7:VAL:HG12	1:C:8:GLU:HG2	2.00	0.42
2:B:348:LEU:HD12	2:B:348:LEU:HA	1.97	0.42
2:D:378:ARG:CD	4:D:2058:HOH:O	2.67	0.42
1:A:273:LYS:NZ	4:A:2084:HOH:O	2.52	0.42
1:C:71:HIS:HB3	4:C:2027:HOH:O	2.18	0.42
1:A:119:HIS:CD2	1:A:182:THR:HB	2.54	0.42
1:C:126:ARG:O	1:C:164:VAL:HG22	2.20	0.42
1:C:5:GLN:HE21	1:C:6:LYS:N	2.18	0.42
1:C:5:GLN:HG2	4:C:2001:HOH:O	2.20	0.42
2:B:385:GLU:HB2	4:B:2076:HOH:O	2.20	0.42
2:D:193:CYS:O	2:D:241:ARG:HD2	2.19	0.42
1:A:81:GLU:O	3:A:1297:DT5:H11	2.20	0.42
1:C:148:LEU:HD23	1:C:148:LEU:HA	1.87	0.42
1:A:255:LEU:HG	1:A:259:GLY:HA3	2.02	0.42
1:A:266:MET:O	1:A:274:ARG:HD3	2.20	0.42
1:A:198:THR:O	1:A:199:ARG:CB	2.66	0.41
1:C:57:GLU:CD	2:D:185:TYR:HH	2.23	0.41
2:B:196:LYS:HE2	2:B:196:LYS:HB3	1.70	0.41
1:A:11:GLY:CA	4:A:2004:HOH:O	2.68	0.41
2:D:296:HIS:HE1	2:D:300:LYS:HE2	1.85	0.41
1:A:181:SER:HB3	4:A:2060:HOH:O	2.20	0.41
1:A:268:HIS:CD2	4:A:2073:HOH:O	2.65	0.41
1:C:138:GLU:CD	4:C:2049:HOH:O	2.59	0.41
1:A:78:LEU:N	1:A:78:LEU:HD23	2.36	0.41

Continued on next page...

Continued from previous page...

Atom-1	Atom-2	Interatomic distance (Å)	Clash overlap (Å)
2:B:345:ASP:HA	2:B:346:PRO:HA	1.79	0.41
1:C:230:VAL:O	1:C:233:MET:HG3	2.20	0.41
2:B:344:ALA:O	2:B:348:LEU:HB2	2.21	0.41
1:A:257:GLU:HG3	1:C:257:GLU:HG3	2.03	0.41
1:C:255:LEU:HA	1:C:255:LEU:HD12	1.91	0.41
2:B:201:LYS:HD3	4:B:2017:HOH:O	2.20	0.41
1:C:37:LEU:O	1:C:38:ASP:C	2.59	0.41
1:C:73:GLU:OE2	2:D:293:ARG:NH1	2.54	0.40
1:A:64:VAL:HG21	1:A:144:ALA:HB2	2.02	0.40
1:A:227:TRP:CE3	1:A:230:VAL:HG13	2.53	0.40
1:A:199:ARG:HB3	4:A:2034:HOH:O	2.21	0.40

There are no symmetry-related clashes.

5.3 Torsion angles [i](#)

5.3.1 Protein backbone [i](#)

In the following table, the Percentiles column shows the percent Ramachandran outliers of the chain as a percentile score with respect to all X-ray entries followed by that with respect to entries of similar resolution.

The Analysed column shows the number of residues for which the backbone conformation was analysed, and the total number of residues.

Mol	Chain	Analysed	Favoured	Allowed	Outliers	Percentiles	
1	A	293/298 (98%)	272 (93%)	16 (6%)	5 (2%)	11	21
1	C	293/298 (98%)	270 (92%)	18 (6%)	5 (2%)	11	21
2	B	256/258 (99%)	254 (99%)	2 (1%)	0	100	100
2	D	256/258 (99%)	250 (98%)	6 (2%)	0	100	100
All	All	1098/1112 (99%)	1046 (95%)	42 (4%)	10 (1%)	21	41

All (10) Ramachandran outliers are listed below:

Mol	Chain	Res	Type
1	C	17	VAL
1	C	39	THR
1	A	40	GLU
1	A	164	VAL

Continued on next page...

Continued from previous page...

Mol	Chain	Res	Type
1	A	38	ASP
1	C	38	ASP
1	C	164	VAL
1	C	13	GLY
1	A	295	HIS
1	A	145	ASP

5.3.2 Protein sidechains ⓘ

In the following table, the Percentiles column shows the percent sidechain outliers of the chain as a percentile score with respect to all X-ray entries followed by that with respect to entries of similar resolution.

The Analysed column shows the number of residues for which the sidechain conformation was analysed, and the total number of residues.

Mol	Chain	Analysed	Rotameric	Outliers	Percentiles	
1	A	260/262 (99%)	229 (88%)	31 (12%)	6	11
1	C	260/262 (99%)	225 (86%)	35 (14%)	5	7
2	B	232/232 (100%)	220 (95%)	12 (5%)	29	53
2	D	232/232 (100%)	219 (94%)	13 (6%)	26	49
All	All	984/988 (100%)	893 (91%)	91 (9%)	11	21

All (91) residues with a non-rotameric sidechain are listed below:

Mol	Chain	Res	Type
1	A	2	GLU
1	A	24	LYS
1	A	34	LYS
1	A	36	ARG
1	A	39	THR
1	A	55	LEU
1	A	56	LYS
1	A	73	GLU
1	A	74	ASN
1	A	83	LEU
1	A	94	SER
1	A	97	THR
1	A	120	SER
1	A	122	ARG
1	A	131	GLN

Continued on next page...

Continued from previous page...

Mol	Chain	Res	Type
1	A	163	VAL
1	A	166	LEU
1	A	169	ARG
1	A	178	LYS
1	A	199	ARG
1	A	200	ARG
1	A	214	ARG
1	A	226	VAL
1	A	230	VAL
1	A	246	GLN
1	A	255	LEU
1	A	257	GLU
1	A	278	LYS
1	A	287	GLN
1	A	291	LYS
1	A	295	HIS
2	B	196	LYS
2	B	202	LYS
2	B	232	LEU
2	B	253	LEU
2	B	289	LYS
2	B	323	GLN
2	B	348	LEU
2	B	384	LEU
2	B	388	LYS
2	B	391	LEU
2	B	414	LYS
2	B	417	LYS
1	C	2	GLU
1	C	9	LYS
1	C	12	GLU
1	C	15	TYR
1	C	17	VAL
1	C	36	ARG
1	C	38	ASP
1	C	47	THR
1	C	49	ILE
1	C	55	LEU
1	C	64	VAL
1	C	65	LYS
1	C	73	GLU
1	C	74	ASN

Continued on next page...

Continued from previous page...

Mol	Chain	Res	Type
1	C	78	LEU
1	C	96	LEU
1	C	97	THR
1	C	122	ARG
1	C	137	THR
1	C	150	ARG
1	C	163	VAL
1	C	166	LEU
1	C	199	ARG
1	C	200	ARG
1	C	206	ASP
1	C	209	ILE
1	C	226	VAL
1	C	230	VAL
1	C	233	MET
1	C	237	LYS
1	C	242	LYS
1	C	250	LYS
1	C	287	GLN
1	C	295	HIS
1	C	296	LEU
2	D	196	LYS
2	D	197	VAL
2	D	202	LYS
2	D	232	LEU
2	D	253	LEU
2	D	289	LYS
2	D	323	GLN
2	D	348	LEU
2	D	384	LEU
2	D	388	LYS
2	D	391	LEU
2	D	414	LYS
2	D	417	LYS

Some sidechains can be flipped to improve hydrogen bonding and reduce clashes. All (26) such sidechains are listed below:

Mol	Chain	Res	Type
1	A	59	ASN
1	A	60	HIS
1	A	74	ASN
1	A	85	GLN

Continued on next page...

Continued from previous page...

Mol	Chain	Res	Type
1	A	113	GLN
1	A	119	HIS
1	A	268	HIS
2	B	183	HIS
2	B	254	GLN
2	B	395	HIS
2	B	396	GLN
2	B	419	HIS
1	C	5	GLN
1	C	59	ASN
1	C	60	HIS
1	C	71	HIS
1	C	113	GLN
1	C	119	HIS
1	C	265	GLN
2	D	183	HIS
2	D	233	HIS
2	D	254	GLN
2	D	296	HIS
2	D	395	HIS
2	D	396	GLN
2	D	419	HIS

5.3.3 RNA ⓘ

There are no RNA molecules in this entry.

5.4 Non-standard residues in protein, DNA, RNA chains ⓘ

2 non-standard protein/DNA/RNA residues are modelled in this entry.

In the following table, the Counts columns list the number of bonds (or angles) for which Mogul statistics could be retrieved, the number of bonds (or angles) that are observed in the model and the number of bonds (or angles) that are defined in the chemical component dictionary. The Link column lists molecule types, if any, to which the group is linked. The Z score for a bond length (or angle) is the number of standard deviations the observed value is removed from the expected value. A bond length (or angle) with $|Z| > 2$ is considered an outlier worth inspection. RMSZ is the root-mean-square of all Z scores of the bond lengths (or angles).

Mol	Type	Chain	Res	Link	Bond lengths			Bond angles		
					Counts	RMSZ	$\# Z > 2$	Counts	RMSZ	$\# Z > 2$
1	TPO	A	160	1	8,10,11	1.25	1 (12%)	7,14,16	0.75	0

Mol	Type	Chain	Res	Link	Bond lengths			Bond angles		
					Counts	RMSZ	# Z > 2	Counts	RMSZ	# Z > 2
1	TPO	C	160	1	8,10,11	2.20	1 (12%)	7,14,16	1.24	0

In the following table, the Chirals column lists the number of chiral outliers, the number of chiral centers analysed, the number of these observed in the model and the number defined in the chemical component dictionary. Similar counts are reported in the Torsion and Rings columns. '-' means no outliers of that kind were identified.

Mol	Type	Chain	Res	Link	Chirals	Torsions	Rings
1	TPO	A	160	1	-	0/8/11/13	0/0/0/0
1	TPO	C	160	1	-	0/8/11/13	0/0/0/0

All (2) bond length outliers are listed below:

Mol	Chain	Res	Type	Atoms	Z	Observed(Å)	Ideal(Å)
1	A	160	TPO	CB-CA	2.31	1.58	1.54
1	C	160	TPO	CB-CA	5.66	1.64	1.54

There are no bond angle outliers.

There are no chirality outliers.

There are no torsion outliers.

There are no ring outliers.

1 monomer is involved in 4 short contacts:

Mol	Chain	Res	Type	Clashes	Symm-Clashes
1	C	160	TPO	4	0

5.5 Carbohydrates [i](#)

There are no carbohydrates in this entry.

5.6 Ligand geometry [i](#)

2 ligands are modelled in this entry.

In the following table, the Counts columns list the number of bonds (or angles) for which Mogul statistics could be retrieved, the number of bonds (or angles) that are observed in the model and the number of bonds (or angles) that are defined in the chemical component dictionary. The Link column lists molecule types, if any, to which the group is linked. The Z score for a bond length (or angle) is the number of standard deviations the observed value is removed from the expected

value. A bond length (or angle) with $|Z| > 2$ is considered an outlier worth inspection. RMSZ is the root-mean-square of all Z scores of the bond lengths (or angles).

Mol	Type	Chain	Res	Link	Bond lengths			Bond angles		
					Counts	RMSZ	$\# Z > 2$	Counts	RMSZ	$\# Z > 2$
3	DT5	A	1297	-	23,30,30	1.40	4 (17%)	29,43,43	2.21	6 (20%)
3	DT5	C	1297	-	23,30,30	1.25	1 (4%)	29,43,43	2.30	7 (24%)

In the following table, the Chirals column lists the number of chiral outliers, the number of chiral centers analysed, the number of these observed in the model and the number defined in the chemical component dictionary. Similar counts are reported in the Torsion and Rings columns. '-' means no outliers of that kind were identified.

Mol	Type	Chain	Res	Link	Chirals	Torsions	Rings
3	DT5	A	1297	-	-	0/14/22/22	0/4/4/4
3	DT5	C	1297	-	-	0/14/22/22	0/4/4/4

All (5) bond length outliers are listed below:

Mol	Chain	Res	Type	Atoms	Z	Observed(Å)	Ideal(Å)
3	A	1297	DT5	C10-N4	-2.54	1.32	1.35
3	A	1297	DT5	C9-N5	-2.29	1.35	1.39
3	A	1297	DT5	C8-C7	2.09	1.41	1.38
3	A	1297	DT5	C7-N1	3.37	1.35	1.30
3	C	1297	DT5	C7-N1	4.37	1.37	1.30

All (13) bond angle outliers are listed below:

Mol	Chain	Res	Type	Atoms	Z	Observed(°)	Ideal(°)
3	C	1297	DT5	O3-S1-O2	-6.92	109.08	118.80
3	A	1297	DT5	O3-S1-O2	-6.63	109.48	118.80
3	C	1297	DT5	C8-C7-N1	-3.86	119.35	124.08
3	A	1297	DT5	C8-C7-N1	-3.84	119.37	124.08
3	C	1297	DT5	O3-S1-C16	2.03	109.89	107.39
3	A	1297	DT5	C7-N1-C10	2.07	118.65	116.56
3	A	1297	DT5	O2-S1-N6	2.12	110.03	107.28
3	C	1297	DT5	C7-N1-C10	2.37	118.95	116.56
3	A	1297	DT5	O1-C7-C8	2.60	119.44	115.95
3	C	1297	DT5	O2-S1-N6	2.63	110.69	107.28
3	C	1297	DT5	O1-C7-C8	3.01	120.00	115.95
3	C	1297	DT5	N5-C9-N2	6.92	119.61	113.70
3	A	1297	DT5	N5-C9-N2	6.92	119.61	113.70

There are no chirality outliers.

There are no torsion outliers.

There are no ring outliers.

2 monomers are involved in 8 short contacts:

Mol	Chain	Res	Type	Clashes	Symm-Clashes
3	A	1297	DT5	4	0
3	C	1297	DT5	4	0

5.7 Other polymers [i](#)

There are no such residues in this entry.

5.8 Polymer linkage issues [i](#)

There are no chain breaks in this entry.

6 Fit of model and data ⓘ

6.1 Protein, DNA and RNA chains ⓘ

In the following table, the column labelled ‘#RSRZ> 2’ contains the number (and percentage) of RSRZ outliers, followed by percent RSRZ outliers for the chain as percentile scores relative to all X-ray entries and entries of similar resolution. The OWAB column contains the minimum, median, 95th percentile and maximum values of the occupancy-weighted average B-factor per residue. The column labelled ‘Q< 0.9’ lists the number of (and percentage) of residues with an average occupancy less than 0.9.

Mol	Chain	Analysed	<RSRZ>	#RSRZ>2		OWAB(Å ²)	Q<0.9
1	A	295/298 (98%)	-0.41	10 (3%)	49 41	13, 24, 48, 73	8 (2%)
1	C	295/298 (98%)	-0.31	15 (5%)	32 25	14, 25, 54, 68	7 (2%)
2	B	258/258 (100%)	-0.43	2 (0%)	87 85	15, 27, 43, 56	0
2	D	258/258 (100%)	-0.44	5 (1%)	70 65	15, 27, 43, 56	0
All	All	1106/1112 (99%)	-0.40	32 (2%)	55 48	13, 26, 48, 73	15 (1%)

All (32) RSRZ outliers are listed below:

Mol	Chain	Res	Type	RSRZ
1	A	295	HIS	6.5
1	A	296	LEU	5.6
1	C	39	THR	5.0
1	C	296	LEU	4.7
1	C	295	HIS	4.0
1	C	14	THR	3.9
1	C	38	ASP	3.7
2	D	323	GLN	3.6
1	A	96	LEU	3.5
1	C	40	GLU	3.2
2	D	324	PRO	3.1
1	A	97	THR	3.1
1	A	38	ASP	3.0
1	A	41	THR	2.9
2	D	283	ASP	2.9
1	C	36	ARG	2.9
1	A	39	THR	2.9
1	A	40	GLU	2.9
1	A	95	ALA	2.8
2	B	323	GLN	2.8
2	B	324	PRO	2.6

Continued on next page...

Continued from previous page...

Mol	Chain	Res	Type	RSRZ
1	C	250	LYS	2.5
1	C	41	THR	2.5
1	C	2	GLU	2.5
1	C	293	VAL	2.4
1	C	294	PRO	2.3
2	D	403	GLN	2.3
1	A	294	PRO	2.1
1	C	239	SER	2.1
1	C	257	GLU	2.1
2	D	428	GLU	2.0
1	C	287	GLN	2.0

6.2 Non-standard residues in protein, DNA, RNA chains [i](#)

In the following table, the Atoms column lists the number of modelled atoms in the group and the number defined in the chemical component dictionary. LLDF column lists the quality of electron density of the group with respect to its neighbouring residues in protein, DNA or RNA chains. The B-factors column lists the minimum, median, 95th percentile and maximum values of B factors of atoms in the group. The column labelled 'Q< 0.9' lists the number of atoms with occupancy less than 0.9.

Mol	Type	Chain	Res	Atoms	RSCC	RSR	LLDF	B-factors(Å ²)	Q<0.9
1	TPO	A	160	11/12	0.98	0.10	-	13,20,23,24	0
1	TPO	C	160	11/12	0.97	0.14	-	23,28,33,33	0

6.3 Carbohydrates [i](#)

There are no carbohydrates in this entry.

6.4 Ligands [i](#)

In the following table, the Atoms column lists the number of modelled atoms in the group and the number defined in the chemical component dictionary. LLDF column lists the quality of electron density of the group with respect to its neighbouring residues in protein, DNA or RNA chains. The B-factors column lists the minimum, median, 95th percentile and maximum values of B factors of atoms in the group. The column labelled 'Q< 0.9' lists the number of atoms with occupancy less than 0.9.

Mol	Type	Chain	Res	Atoms	RSCC	RSR	LLDF	B-factors(Å ²)	Q<0.9
3	DT5	A	1297	27/27	0.96	0.13	-0.10	14,16,29,30	0
3	DT5	C	1297	27/27	0.97	0.10	-0.90	11,17,20,24	0

6.5 Other polymers [i](#)

There are no such residues in this entry.