



# Full wwPDB X-ray Structure Validation Report ⓘ

Feb 1, 2016 – 01:14 AM GMT

PDB ID : 2C75  
Title : FUNCTIONAL ROLE OF THE AROMATIC CAGE IN HUMAN MONOAMINE OXIDASE B: STRUCTURES AND CATALYTIC PROPERTIES OF TYR435 MUTANT PROTEINS  
Authors : Li, M.; Binda, C.; Mattevi, A.; Edmondson, D.E.  
Deposited on : 2005-11-17  
Resolution : 1.70 Å(reported)

This is a Full wwPDB X-ray Structure Validation Report for a publicly released PDB entry.  
We welcome your comments at [validation@mail.wwpdb.org](mailto:validation@mail.wwpdb.org)  
A user guide is available at  
<http://wwpdb.org/validation/2016/XrayValidationReportHelp>  
with specific help available everywhere you see the ⓘ symbol.

---

The following versions of software and data (see [references ⓘ](#)) were used in the production of this report:

MolProbity : 4.02b-467  
Mogul : 1.7 (RC4), CSD as536be (2015)  
Xtriage (Phenix) : 1.9-1692  
EDS : rb-20026688  
Percentile statistics : 20151230.v01 (using entries in the PDB archive December 30th 2015)  
Refmac : 5.8.0135  
CCP4 : 6.5.0  
Ideal geometry (proteins) : Engh & Huber (2001)  
Ideal geometry (DNA, RNA) : Parkinson et al. (1996)  
Validation Pipeline (wwPDB-VP) : trunk26865

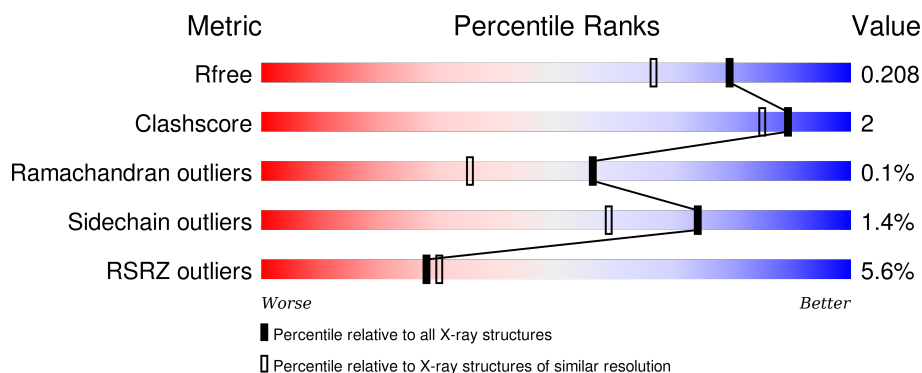
# 1 Overall quality at a glance ⓘ

The following experimental techniques were used to determine the structure:

## *X-RAY DIFFRACTION*

The reported resolution of this entry is 1.70 Å.

Percentile scores (ranging between 0-100) for global validation metrics of the entry are shown in the following graphic. The table shows the number of entries on which the scores are based.



Metric	Whole archive (#Entries)	Similar resolution (#Entries, resolution range(Å))
$R_{free}$	91344	3190 (1.70-1.70)
Clashscore	102246	3585 (1.70-1.70)
Ramachandran outliers	100387	3527 (1.70-1.70)
Sidechain outliers	100360	3527 (1.70-1.70)
RSRZ outliers	91569	3200 (1.70-1.70)

The table below summarises the geometric issues observed across the polymeric chains and their fit to the electron density. The red, orange, yellow and green segments on the lower bar indicate the fraction of residues that contain outliers for  $\geq 3$ , 2, 1 and 0 types of geometric quality criteria. A grey segment represents the fraction of residues that are not modelled. The numeric value for each fraction is indicated below the corresponding segment, with a dot representing fractions  $\leq 5\%$ . The upper red bar (where present) indicates the fraction of residues that have poor fit to the electron density. The numeric value is given above the bar.

Mol	Chain	Length	Quality of chain
1	A	520	<div> <div>6%</div> <div>92%</div> <div>• •</div> </div>
1	B	520	<div> <div>5%</div> <div>90%</div> <div>5% 5%</div> </div>

The following table lists non-polymeric compounds, carbohydrate monomers and non-standard residues in protein, DNA, RNA chains that are outliers for geometric or electron-density-fit criteria:

Mol	Type	Chain	Res	Chirality	Geometry	Clashes	Electron density
3	RSA	A	601	X	-	-	-
3	RSA	B	601	X	-	-	X

## 2 Entry composition [i](#)

There are 4 unique types of molecules in this entry. The entry contains 8918 atoms, of which 0 are hydrogens and 0 are deuteriums.

In the tables below, the ZeroOcc column contains the number of atoms modelled with zero occupancy, the AltConf column contains the number of residues with at least one atom in alternate conformation and the Trace column contains the number of residues modelled with at most 2 atoms.

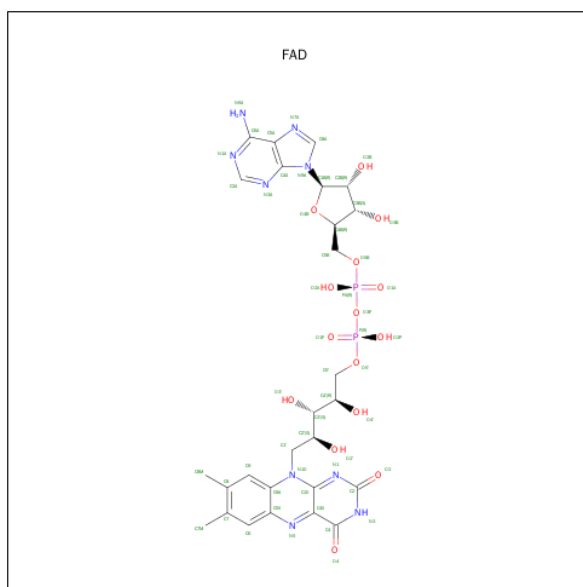
- Molecule 1 is a protein called AMINE OXIDASE (FLAVIN-CONTAINING) B.

Mol	Chain	Residues	Atoms					ZeroOcc	AltConf	Trace
1	A	499	Total	C	N	O	S	0	1	0
			3968	2535	681	727	25			
1	B	494	Total	C	N	O	S	0	1	0
			3937	2516	676	720	25			

There are 2 discrepancies between the modelled and reference sequences:

Chain	Residue	Modelled	Actual	Comment	Reference
A	435	LEU	TYR	ENGINEERED MUTATION	UNP P27338
B	435	LEU	TYR	ENGINEERED MUTATION	UNP P27338

- Molecule 2 is FLAVIN-ADENINE DINUCLEOTIDE (three-letter code: FAD) (formula:  $C_{27}H_{33}N_9O_{15}P_2$ ).



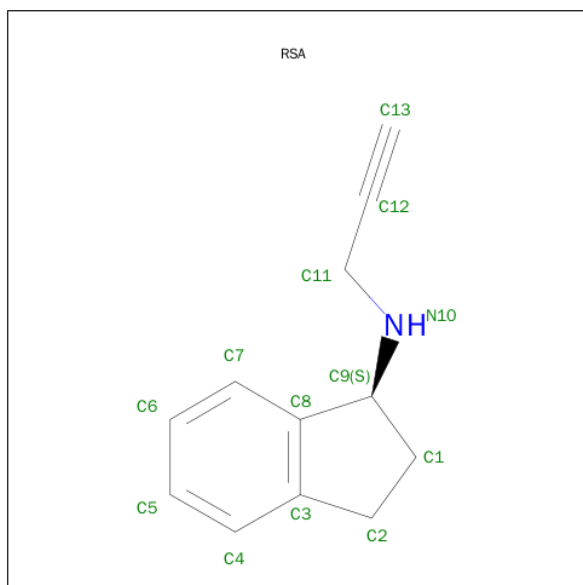
Mol	Chain	Residues	Atoms					ZeroOcc	AltConf
2	A	1	Total	C	N	O	P	0	0
			53	27	9	15	2		

*Continued on next page...*

Continued from previous page...

Mol	Chain	Residues	Atoms					ZeroOcc	AltConf
2	B	1	Total	C	N	O	P	0	0
			53	27	9	15	2		

- Molecule 3 is N-PROPARGYL-1(S)-AMINOINDAN (three-letter code: RSA) (formula:  $C_{12}H_{13}N$ ).



Mol	Chain	Residues	Atoms			ZeroOcc	AltConf
3	A	1	Total	C	N	0	0
			13	12	1		
3	B	1	Total	C	N	0	0
			13	12	1		

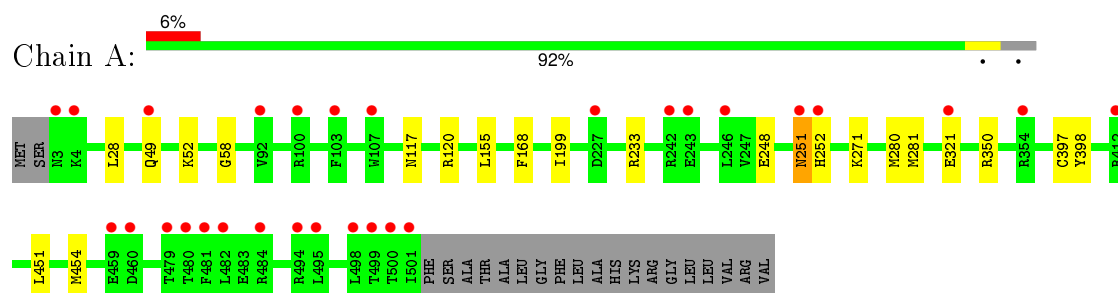
- Molecule 4 is water.

Mol	Chain	Residues	Atoms		ZeroOcc	AltConf
4	A	410	Total	O	0	0
			410	410		
4	B	471	Total	O	0	0
			471	471		

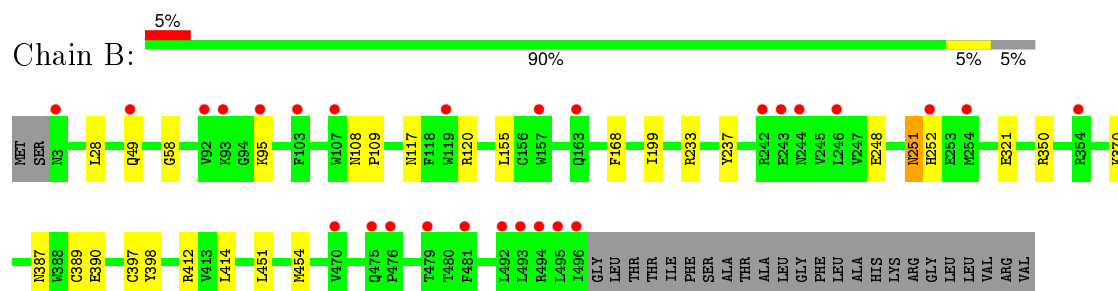
### 3 Residue-property plots [i](#)

These plots are drawn for all protein, RNA and DNA chains in the entry. The first graphic for a chain summarises the proportions of errors displayed in the second graphic. The second graphic shows the sequence view annotated by issues in geometry and electron density. Residues are color-coded according to the number of geometric quality criteria for which they contain at least one outlier: green = 0, yellow = 1, orange = 2 and red = 3 or more. A red dot above a residue indicates a poor fit to the electron density ( $\text{RSRZ} > 2$ ). Stretches of 2 or more consecutive residues without any outlier are shown as a green connector. Residues present in the sample, but not in the model, are shown in grey.

#### • Molecule 1: AMINE OXIDASE (FLAVIN-CONTAINING) B



#### • Molecule 1: AMINE OXIDASE (FLAVIN-CONTAINING) B



## 4 Data and refinement statistics

Property	Value	Source
Space group	C 2 2 2	Depositor
Cell constants a, b, c, $\alpha$ , $\beta$ , $\gamma$	131.10Å 222.53Å 86.00Å 90.00° 90.00° 90.00°	Depositor
Resolution (Å)	15.00 – 1.70 27.76 – 1.70	Depositor EDS
% Data completeness (in resolution range)	98.0 (15.00-1.70) 97.9 (27.76-1.70)	Depositor EDS
$R_{merge}$	0.08	Depositor
$R_{sym}$	(Not available)	Depositor
$\langle I/\sigma(I) \rangle$ <sup>1</sup>	2.38 (at 1.70Å)	Xtriage
Refinement program	REFMAC 5.2.0005	Depositor
R, $R_{free}$	0.188 , 0.209 0.188 , 0.208	Depositor DCC
$R_{free}$ test set	3411 reflections (2.60%)	DCC
Wilson B-factor (Å <sup>2</sup> )	14.5	Xtriage
Anisotropy	0.231	Xtriage
Bulk solvent $k_{sol}$ (e/Å <sup>3</sup> ), $B_{sol}$ (Å <sup>2</sup> )	0.39 , 52.0	EDS
Estimated twinning fraction	0.010 for 1/2*h-1/2*k,-3/2*h-1/2*k,-l 0.015 for 1/2*h+1/2*k,3/2*h-1/2*k,-l	Xtriage
L-test for twinning <sup>2</sup>	$\langle  L  \rangle = 0.50$ , $\langle L^2 \rangle = 0.33$	Xtriage
Outliers	0 of 134873 reflections	Xtriage
$F_o, F_c$ correlation	0.95	EDS
Total number of atoms	8918	wwPDB-VP
Average B, all atoms (Å <sup>2</sup> )	16.0	wwPDB-VP

Xtriage's analysis on translational NCS is as follows: *The largest off-origin peak in the Patterson function is 3.90% of the height of the origin peak. No significant pseudotranslation is detected.*

<sup>1</sup>Intensities estimated from amplitudes.

<sup>2</sup>Theoretical values of  $\langle |L| \rangle$ ,  $\langle L^2 \rangle$  for acentric reflections are 0.5, 0.375 respectively for untwinned datasets, and 0.333, 0.2 for perfectly twinned datasets.

## 5 Model quality

### 5.1 Standard geometry

Bond lengths and bond angles in the following residue types are not validated in this section: RSA, FAD

The Z score for a bond length (or angle) is the number of standard deviations the observed value is removed from the expected value. A bond length (or angle) with  $|Z| > 5$  is considered an outlier worth inspection. RMSZ is the root-mean-square of all Z scores of the bond lengths (or angles).

Mol	Chain	Bond lengths		Bond angles	
		RMSZ	$\# Z  > 5$	RMSZ	$\# Z  > 5$
1	A	0.39	0/4069	0.53	0/5523
1	B	0.39	0/4038	0.54	0/5480
All	All	0.39	0/8107	0.54	0/11003

There are no bond length outliers.

There are no bond angle outliers.

There are no chirality outliers.

There are no planarity outliers.

### 5.2 Too-close contacts

In the following table, the Non-H and H(model) columns list the number of non-hydrogen atoms and hydrogen atoms in the chain respectively. The H(added) column lists the number of hydrogen atoms added and optimized by MolProbity. The Clashes column lists the number of clashes within the asymmetric unit, whereas Symm-Clashes lists symmetry related clashes.

Mol	Chain	Non-H	H(model)	H(added)	Clashes	Symm-Clashes
1	A	3968	0	3970	20	0
1	B	3937	0	3940	23	0
2	A	53	0	29	1	0
2	B	53	0	29	1	0
3	A	13	0	13	0	0
3	B	13	0	13	0	0
4	A	410	0	0	1	1
4	B	471	0	0	4	0
All	All	8918	0	7994	38	1

The all-atom clashscore is defined as the number of clashes found per 1000 atoms (including hydrogen atoms). The all-atom clashscore for this structure is 2.



All (38) close contacts within the same asymmetric unit are listed below, sorted by their clash magnitude.

Atom-1	Atom-2	Interatomic distance (Å)	Clash overlap (Å)
1:A:248:GLU:OE2	1:B:252:HIS:HE1	1.64	0.80
1:B:117:ASN:HD22	1:B:120:ARG:HH21	1.34	0.75
1:A:117:ASN:HD22	1:A:120:ARG:HH21	1.33	0.74
1:A:252:HIS:HE1	1:B:248:GLU:OE2	1.70	0.73
1:B:414:LEU:HD12	4:B:2403:HOH:O	1.90	0.70
1:B:251:ASN:H	1:B:251:ASN:HD22	1.42	0.67
1:A:251:ASN:H	1:A:251:ASN:HD22	1.41	0.66
1:A:248:GLU:OE2	1:B:252:HIS:CE1	2.54	0.57
1:A:168:PHE:HE1	1:A:199:ILE:HG22	1.73	0.54
1:B:321:GLU:CD	1:B:321:GLU:H	2.15	0.51
1:A:233:ARG:HG3	1:A:251:ASN:HD21	1.77	0.50
1:B:168:PHE:HE1	1:B:199:ILE:HG22	1.77	0.50
1:A:321:GLU:CD	1:A:321:GLU:H	2.15	0.49
1:B:387:ASN:O	1:B:390:GLU:HG2	2.13	0.49
1:B:451:LEU:HD23	1:B:454:MET:HE2	1.94	0.48
1:B:233:ARG:HG3	1:B:251:ASN:HD21	1.79	0.48
1:A:454:MET:HB2	1:A:454:MET:HE3	1.61	0.47
1:A:58:GLY:HA2	2:A:600:FAD:C4X	2.45	0.47
1:A:28:LEU:HD11	1:A:454:MET:CE	2.45	0.46
1:B:370:LYS:HE2	4:B:2127:HOH:O	2.14	0.46
1:A:252:HIS:CE1	1:B:248:GLU:OE2	2.59	0.46
1:B:168:PHE:HE1	1:B:199:ILE:CG2	2.28	0.46
1:A:168:PHE:HE1	1:A:199:ILE:CG2	2.28	0.46
1:B:412:ARG:HG2	4:B:2402:HOH:O	2.15	0.46
1:A:168:PHE:CE1	1:A:199:ILE:HG22	2.52	0.45
1:B:28:LEU:HD11	1:B:454:MET:CE	2.47	0.45
1:B:58:GLY:HA2	2:B:600:FAD:C4X	2.48	0.44
1:A:451:LEU:HD23	1:A:454:MET:HE2	2.00	0.44
1:A:28:LEU:HD11	1:A:454:MET:HE1	2.00	0.44
1:B:108:ASN:HA	1:B:109:PRO:HD3	1.89	0.43
1:B:454:MET:HB2	1:B:454:MET:HE3	1.60	0.43
1:A:168:PHE:CE1	1:A:199:ILE:CG2	3.02	0.43
1:B:237:TYR:HB3	1:B:248:GLU:HB3	2.01	0.42
1:A:280:MET:HE2	1:A:281:MET:HG2	2.01	0.42
1:B:168:PHE:CE1	1:B:199:ILE:CG2	3.01	0.42
1:B:95:LYS:HG2	4:B:2128:HOH:O	2.19	0.42
1:A:271:LYS:HE2	4:A:2332:HOH:O	2.21	0.41
1:A:280:MET:HG3	1:B:389:CYS:CB	2.52	0.40

All (1) symmetry-related close contacts are listed below. The label for Atom-2 includes the sym-

metry operator and encoded unit-cell translations to be applied.

Atom-1	Atom-2	Interatomic distance (Å)	Clash overlap (Å)
4:A:2043:HOH:O	4:A:2043:HOH:O[3_655]	1.64	0.56

## 5.3 Torsion angles [i](#)

### 5.3.1 Protein backbone [i](#)

In the following table, the Percentiles column shows the percent Ramachandran outliers of the chain as a percentile score with respect to all X-ray entries followed by that with respect to entries of similar resolution.

The Analysed column shows the number of residues for which the backbone conformation was analysed, and the total number of residues.

Mol	Chain	Analysed	Favoured	Allowed	Outliers	Percentiles	
1	A	498/520 (96%)	485 (97%)	12 (2%)	1 (0%)	52	32
1	B	493/520 (95%)	480 (97%)	13 (3%)	0	100	100
All	All	991/1040 (95%)	965 (97%)	25 (2%)	1 (0%)	56	35

All (1) Ramachandran outliers are listed below:

Mol	Chain	Res	Type
1	A	52	LYS

### 5.3.2 Protein sidechains [i](#)

In the following table, the Percentiles column shows the percent sidechain outliers of the chain as a percentile score with respect to all X-ray entries followed by that with respect to entries of similar resolution.

The Analysed column shows the number of residues for which the sidechain conformation was analysed, and the total number of residues.

Mol	Chain	Analysed	Rotameric	Outliers	Percentiles	
1	A	428/444 (96%)	422 (99%)	6 (1%)	74	59
1	B	425/444 (96%)	419 (99%)	6 (1%)	74	59
All	All	853/888 (96%)	841 (99%)	12 (1%)	74	59

All (12) residues with a non-rotameric sidechain are listed below:

Mol	Chain	Res	Type
1	A	49	GLN
1	A	155	LEU
1	A	251	ASN
1	A	350	ARG
1	A	397	CYS
1	A	398	TYR
1	B	49	GLN
1	B	155	LEU
1	B	251	ASN
1	B	350	ARG
1	B	397	CYS
1	B	398	TYR

Some sidechains can be flipped to improve hydrogen bonding and reduce clashes. All (9) such sidechains are listed below:

Mol	Chain	Res	Type
1	A	3	ASN
1	A	117	ASN
1	A	251	ASN
1	A	252	HIS
1	A	452	HIS
1	B	117	ASN
1	B	251	ASN
1	B	252	HIS
1	B	452	HIS

### 5.3.3 RNA ⓘ

There are no RNA molecules in this entry.

## 5.4 Non-standard residues in protein, DNA, RNA chains ⓘ

There are no non-standard protein/DNA/RNA residues in this entry.

## 5.5 Carbohydrates ⓘ

There are no carbohydrates in this entry.

## 5.6 Ligand geometry

4 ligands are modelled in this entry.

In the following table, the Counts columns list the number of bonds (or angles) for which Mogul statistics could be retrieved, the number of bonds (or angles) that are observed in the model and the number of bonds (or angles) that are defined in the chemical component dictionary. The Link column lists molecule types, if any, to which the group is linked. The Z score for a bond length (or angle) is the number of standard deviations the observed value is removed from the expected value. A bond length (or angle) with  $|Z| > 2$  is considered an outlier worth inspection. RMSZ is the root-mean-square of all Z scores of the bond lengths (or angles).

Mol	Type	Chain	Res	Link	Bond lengths			Bond angles		
					Counts	RMSZ	# $ Z  > 2$	Counts	RMSZ	# $ Z  > 2$
2	FAD	A	600	1,3	48,58,58	1.21	6 (12%)	54,89,89	2.17	7 (12%)
3	RSA	A	601	2	12,14,14	5.35	3 (25%)	17,18,18	12.87	3 (17%)
2	FAD	B	600	1,3	48,58,58	1.23	6 (12%)	54,89,89	2.10	7 (12%)
3	RSA	B	601	2	12,14,14	5.29	3 (25%)	17,18,18	12.88	3 (17%)

In the following table, the Chirals column lists the number of chiral outliers, the number of chiral centers analysed, the number of these observed in the model and the number defined in the chemical component dictionary. Similar counts are reported in the Torsion and Rings columns. '-' means no outliers of that kind were identified.

Mol	Type	Chain	Res	Link	Chirals	Torsions	Rings
2	FAD	A	600	1,3	-	0/30/50/50	0/6/6/6
3	RSA	A	601	2	1/1/1/2	0/3/13/13	0/2/2/2
2	FAD	B	600	1,3	-	0/30/50/50	0/6/6/6
3	RSA	B	601	2	1/1/1/2	0/3/13/13	0/2/2/2

All (18) bond length outliers are listed below:

Mol	Chain	Res	Type	Atoms	Z	Observed(Å)	Ideal(Å)
3	A	601	RSA	C11-N10	-14.30	1.30	1.46
3	B	601	RSA	C11-N10	-14.27	1.30	1.46
2	A	600	FAD	C1'-N10	2.15	1.50	1.48
2	B	600	FAD	C10-N1	2.24	1.39	1.35
2	A	600	FAD	C10-N1	2.31	1.39	1.35
2	B	600	FAD	C1'-N10	2.35	1.50	1.48
2	A	600	FAD	C2A-N1A	2.52	1.38	1.33
2	B	600	FAD	C2A-N1A	2.64	1.38	1.33
2	A	600	FAD	C4-N3	2.86	1.38	1.33
2	A	600	FAD	C2A-N3A	2.89	1.37	1.32
2	B	600	FAD	C2A-N3A	2.95	1.37	1.32

*Continued on next page...*

*Continued from previous page...*

Mol	Chain	Res	Type	Atoms	Z	Observed(Å)	Ideal(Å)
2	B	600	FAD	C4-N3	2.95	1.38	1.33
2	B	600	FAD	C4X-N5	3.63	1.39	1.33
2	A	600	FAD	C4X-N5	4.11	1.39	1.33
3	A	601	RSA	C12-C13	5.83	1.31	1.17
3	B	601	RSA	C12-C13	5.86	1.31	1.17
3	B	601	RSA	C11-C12	9.72	1.54	1.47
3	A	601	RSA	C11-C12	10.12	1.54	1.47

All (20) bond angle outliers are listed below:

Mol	Chain	Res	Type	Atoms	Z	Observed(°)	Ideal(°)
3	A	601	RSA	C11-C12-C13	-52.52	125.57	178.33
3	B	601	RSA	C11-C12-C13	-52.43	125.65	178.33
2	A	600	FAD	N3A-C2A-N1A	-11.87	119.80	128.89
2	B	600	FAD	N3A-C2A-N1A	-11.43	120.14	128.89
2	A	600	FAD	C1B-N9A-C4A	-3.41	121.79	126.94
2	B	600	FAD	C4X-C10-N10	-3.24	118.61	120.52
2	A	600	FAD	C4X-C10-N10	-2.92	118.80	120.52
2	B	600	FAD	C9A-C5X-N5	-2.80	118.22	122.36
2	B	600	FAD	C1B-N9A-C4A	-2.78	122.74	126.94
3	B	601	RSA	C6-C7-C8	-2.61	117.63	121.02
2	A	600	FAD	C4X-C4-N3	-2.53	120.13	123.59
2	B	600	FAD	C4X-C4-N3	-2.51	120.15	123.59
2	A	600	FAD	C9A-C5X-N5	-2.51	118.65	122.36
3	A	601	RSA	C6-C7-C8	-2.11	118.28	121.02
2	A	600	FAD	P-O3P-PA	-2.09	126.87	132.73
2	B	600	FAD	C4X-N5-C5X	2.04	119.11	116.76
2	B	600	FAD	C4-N3-C2	5.82	120.28	115.25
2	A	600	FAD	C4-N3-C2	5.94	120.38	115.25
3	A	601	RSA	C12-C11-N10	6.54	121.03	112.19
3	B	601	RSA	C12-C11-N10	6.70	121.25	112.19

All (2) chirality outliers are listed below:

Mol	Chain	Res	Type	Atom
3	A	601	RSA	C9
3	B	601	RSA	C9

There are no torsion outliers.

There are no ring outliers.

2 monomers are involved in 2 short contacts:

Mol	Chain	Res	Type	Clashes	Symm-Clashes
2	A	600	FAD	1	0
2	B	600	FAD	1	0

## 5.7 Other polymers [i](#)

There are no such residues in this entry.

## 5.8 Polymer linkage issues [i](#)

There are no chain breaks in this entry.

## 6 Fit of model and data ⓘ

### 6.1 Protein, DNA and RNA chains ⓘ

In the following table, the column labelled ‘#RSRZ> 2’ contains the number (and percentage) of RSRZ outliers, followed by percent RSRZ outliers for the chain as percentile scores relative to all X-ray entries and entries of similar resolution. The OWAB column contains the minimum, median, 95<sup>th</sup> percentile and maximum values of the occupancy-weighted average B-factor per residue. The column labelled ‘Q< 0.9’ lists the number of (and percentage) of residues with an average occupancy less than 0.9.

Mol	Chain	Analysed	<RSRZ>	#RSRZ>2	OWAB(Å <sup>2</sup> )	Q<0.9
1	A	499/520 (95%)	0.13	29 (5%) 26 28	8, 13, 30, 54	0
1	B	494/520 (95%)	0.19	27 (5%) 29 31	8, 13, 27, 47	0
All	All	993/1040 (95%)	0.16	56 (5%) 28 30	8, 13, 29, 54	0

All (56) RSRZ outliers are listed below:

Mol	Chain	Res	Type	RSRZ
1	B	495	LEU	8.1
1	B	496	ILE	6.7
1	B	494	ARG	6.3
1	A	107	TRP	5.8
1	B	481	PHE	5.4
1	B	107	TRP	5.3
1	A	500	THR	4.5
1	B	243	GLU	4.2
1	A	498	LEU	4.0
1	B	242	ARG	3.9
1	A	501	ILE	3.9
1	B	493	LEU	3.9
1	A	481	PHE	3.9
1	A	482	LEU	3.8
1	B	492	LEU	3.7
1	B	95	LYS	3.6
1	B	3	ASN	3.6
1	A	252	HIS	3.5
1	A	494	ARG	3.5
1	B	93	LYS	3.4
1	A	92	VAL	3.3
1	B	244	ASN	3.2
1	B	103	PHE	3.2
1	A	3	ASN	3.1

*Continued on next page...*

*Continued from previous page...*

Mol	Chain	Res	Type	RSRZ
1	A	480	THR	3.1
1	A	103	PHE	3.0
1	B	252	HIS	3.0
1	A	354	ARG	3.0
1	B	476	PRO	2.9
1	B	354	ARG	2.9
1	A	242	ARG	2.8
1	B	475	GLN	2.8
1	B	254	MET	2.6
1	A	495	LEU	2.6
1	A	100	ARG	2.5
1	B	470	VAL	2.4
1	A	321	GLU	2.4
1	A	412	ARG	2.4
1	A	227	ASP	2.4
1	A	49	GLN	2.4
1	B	163	GLN	2.3
1	A	4	LYS	2.3
1	A	243	GLU	2.3
1	A	246	LEU	2.3
1	A	459	GLU	2.3
1	B	157	TRP	2.2
1	A	484	ARG	2.2
1	A	499	THR	2.1
1	B	479	THR	2.1
1	B	92	VAL	2.1
1	B	49	GLN	2.1
1	B	119	TRP	2.1
1	A	479	THR	2.1
1	A	251	ASN	2.0
1	A	460	ASP	2.0
1	B	246	LEU	2.0

## 6.2 Non-standard residues in protein, DNA, RNA chains ⓘ

There are no non-standard protein/DNA/RNA residues in this entry.

## 6.3 Carbohydrates ⓘ

There are no carbohydrates in this entry.



## 6.4 Ligands [i](#)

In the following table, the Atoms column lists the number of modelled atoms in the group and the number defined in the chemical component dictionary. LLDF column lists the quality of electron density of the group with respect to its neighbouring residues in protein, DNA or RNA chains. The B-factors column lists the minimum, median, 95<sup>th</sup> percentile and maximum values of B factors of atoms in the group. The column labelled 'Q< 0.9' lists the number of atoms with occupancy less than 0.9.

Mol	Type	Chain	Res	Atoms	RSCC	RSR	LLDF	B-factors(Å <sup>2</sup> )	Q<0.9
3	RSA	B	601	13/13	0.95	0.13	2.13	13,16,17,17	0
3	RSA	A	601	13/13	0.96	0.13	1.96	13,16,17,17	0
2	FAD	B	600	53/53	0.97	0.09	-0.15	7,9,11,11	0
2	FAD	A	600	53/53	0.97	0.08	-0.25	7,9,11,11	0

## 6.5 Other polymers [i](#)

There are no such residues in this entry.